

# Regulation of the Interleukin (IL)-12R $\beta$ 2 Subunit Expression in Developing T Helper 1 (Th1) and Th2 Cells

By Susanne J. Szabo,\* Anand S. Dighe,\* Ueli Gubler,<sup>‡</sup>  
and Kenneth M. Murphy\*

---

From the \*Department of Pathology, Washington University School of Medicine, St. Louis, Missouri 63110; and the <sup>‡</sup>Department of Inflammation/Autoimmune Diseases Hoffmann La-Roche Inc., Nutley, New Jersey 07110

## Summary

The developmental commitment to a T helper 1 (Th1)- or Th2-type response can significantly influence host immunity to pathogens. Extinction of the IL-12 signaling pathway during early Th2 development provides a mechanism that allows stable phenotype commitment. In this report we demonstrate that extinction of IL-12 signaling in early Th2 cells results from a selective loss of IL-12 receptor (IL-12R)  $\beta$ 2 subunit expression. To determine the basis for this selective loss, we examined IL-12R  $\beta$ 2 subunit expression during Th cell development in response to T cell treatment with different cytokines. IL-12R  $\beta$ 2 is not expressed by naive resting CD4<sup>+</sup> T cells, but is induced upon antigen activation through the T cell receptor. Importantly, IL-4 and IFN- $\gamma$  were found to significantly modify IL-12 receptor  $\beta$ 2 expression after T cell activation. IL-4 inhibited IL-12R  $\beta$ 2 expression leading to the loss of IL-12 signaling, providing an important point of regulation to promote commitment to the Th2 pathway. IFN- $\gamma$  treatment of early developing Th2 cells maintained IL-12R  $\beta$ 2 expression and restored the ability of these cells to functionally respond to IL-12, but did not directly inhibit IL-4 or induce IFN- $\gamma$  production. Thus, IFN- $\gamma$  may prevent early Th cells from premature commitment to the Th2 pathway. Controlling the expression of the IL-12R  $\beta$ 2 subunit could be an important therapeutic target for the redirection of ongoing Th cell responses.

In chronic immune responses, cytokine production by CD4<sup>+</sup> T cells may polarize toward either a Th1 or Th2 response (1). Th1 cytokines, such as IFN- $\gamma$  and lymphotoxin, promote phagocytic and inflammatory responses, whereas Th2 cytokines like IL-4, IL-5, and IL-6 promote allergic and eosinophilic responses and provide specific B cell help associated with IgE isotype switching (1–4). Cytokines present in the early stages of antigen driven CD4<sup>+</sup> T cell activation help to determine the specific pattern of Th phenotype that develops (4). Th1 development is enhanced when naive T cells are activated in the presence of IL-12 (5, 6). IFN- $\gamma$  assists Th1 development initially through a mechanism consistent with promoting the ability of naive T cells to respond to IL-12 (7, 8). Conversely, Th2 cells develop when IL-4 but not IL-12 is present during activation of naive T cells (5, 9). In addition, cross regulation between these subsets takes place, so that development of one subset is inhibited by cytokines produced by the other (2, 4). This mechanism provides one way for responses to become self-reinforcing and helps to stabilize the emergence of polarized phenotypes. For example, the Th2 cytokines interleukin 4 (IL-4) and IL-10 suppress Th1 development by inhibiting production of IFN- $\gamma$  and IL-12 (10), whereas

IFN- $\gamma$  has been thought to selectively limit the outgrowth of Th2 cells (11–13).

Recently, reversibility of Th2 responses has been examined both in vivo and in vitro (14–18). Th2 responses developing during infection by *Leishmania major* of susceptible BALB/c mice were found to revert to healing Th1-type responses upon treatment with IL-12 and the antibiotic compound Pentostam (14) or under certain conditions in models employing T cell transfers into scid mice (15). These studies suggest that emerging Th2 responses may be reversible. In vitro analysis of TCR-transgenic naive T cells showed that emergent Th2 responses become unresponsive to IL-12 and effectively resist reversal to Th1 phenotype (16, 17). We partially characterized the mechanism of in vitro resistance of Th2 cells to IL-12 as a defect in proximal IL-12 signaling (17). T cells activated in vitro for 3 d under strongly polarizing conditions (IL-4 and anti-IL-12) were unable to phosphorylate Jak2, Stat1, Stat3, and Stat4 in response to IL-12 (17). Expression of the IL-12R  $\beta$ 1 subunit was similar in Th1 and Th2 cells, suggesting that this receptor subunit was not responsible for lack of IL-12 signaling in Th2 cells. Also, both Th1 and Th2 cells expressed similar levels of the relevant kinases, Jak2 and Tyk2 and the

STAT proteins Stat1, Stat3, and Stat4 (17). Thus, the precise molecular basis for the signaling defect remained unclear. We also compared loss of IL-12 responsiveness in T cells from Balb/c (*L. major* susceptible) and B10.D2 (*L. major* resistant) strains and found a correlation between resistance and the maintenance of T cell IL-12 responsiveness. Thus, when stimulated without addition of cytokines or anti-cytokine antibodies, B10.D2 T cells maintained IL-12 responsiveness whereas Balb/c T cells lost IL-12 responsiveness (19). We suggested that prolonging the period of IL-12 responsiveness in an emerging T cell response may allow resistant strains to reverse the early Th2-type response toward a protective Th1 response due to the action of IL-12 generated during the later stages of infection (19, 20). However, the precise molecular basis for the defect in IL-12 signaling still remained unclear (19).

Recently, a second component of the IL-12 receptor (IL-12R)<sup>1</sup> was identified and cloned. This component, the IL-12 receptor  $\beta$ 2 subunit, is necessary for IL-12 signaling through the Jak/STAT pathway. In the present report, we now show that the basis for the IL-12 signaling defect in Th2 cells is the specific down regulation of this newly identified IL-12 receptor component, the IL-12R  $\beta$ 2 subunit. To determine the basis for this selective loss, we examined IL-12R  $\beta$ 2 subunit expression in response to T cell treatment with cytokines. IFN- $\gamma$  treatment of Th cells developing in Th2-inducing conditions induced the expression of IL-12R  $\beta$ 2 mRNA and restored the ability of these T cells to functionally respond to IL-12. IFN- $\gamma$  may thus prevent early Th cells from premature commitment to the Th2 pathway. These results help to resolve some of the discrepancies reported regarding the reversibility of ongoing murine Th2 responses *in vivo* and *in vitro*. They may also help to explain some of the differences observed between murine and human Th2 cells.

## Materials and Methods

**Cytokines and Antibodies.** Recombinant human IL-2 was provided by Takeda (Osaka, Japan), recombinant murine IL-4 by Genzyme (Cambridge, MA), recombinant murine IL-12 by Hoffmann-La Roche (Nutley, NJ), and recombinant murine IFN- $\gamma$  by Genentech (South San Francisco, CA). Anti-IL-12 mAb (TOSH) was supplied by Drs. C.S. Tripp and E.R. Unanue (Washington University School of Medicine, St. Louis, MO) (22), anti-IFN- $\gamma$  mAb (H22) by Dr. R.D. Schreiber (23), and polyclonal rabbit antiserum specific for Stat4 was provided by Dr. James Darnell (Rockefeller University, New York, NY) (24, 25). The anti-phosphotyrosine reagent RC20 was purchased from Transduction Laboratories (Lexington, KY). Anti-IL-4 mAb 11B11 has been described (26).

**Medium and Peptides.** T cells were maintained in IMDM (Washington University Tissue Culture Support Center, St. Louis, MO) supplemented as described (17). OVA peptide from chicken ovalbumin (residues 323-339) was synthesized on an Applied Biosystems model 430 peptide synthesizer (Foster City, CA).

**Animals.** Mice transgenic for the DO11.10  $\alpha\beta$ -TCR (27) were maintained on the BALB/c background. Female BALB/c mice were purchased from Harlan Sprague Dawley (Indianapolis, IN).

**T Cell Purification and T Cell Cultures.** Mel-14<sup>hi</sup>/CD4<sup>+</sup> T cells were isolated from spleens of 4-6 wk old unimmunized DO11.10 TCR-transgenic mice on a FACS<sup>®</sup> Vantage cell sorter as described (28) yielding purities of >98%.  $2.5 \times 10^5$  FACS<sup>®</sup>-sorted Mel-14<sup>hi</sup>/CD4<sup>+</sup> DO11.10 T cells were stimulated in 2 ml cultures with 0.3  $\mu$ M OVA peptide presented by irradiated BALB/c splenocytes (2,000 rads,  $6 \times 10^6$ /well) in the presence of 10 U/ml IL-12 and 10  $\mu$ g/ml anti-IL-4 (11B11) to promote Th1 phenotype development, 200 U/ml IL-4 and 3  $\mu$ g/ml anti-IL-12 (TOSH) to promote Th2 phenotype development, or the combination of 10 U/ml IL-12 and 200 U/ml IL-4. At 72 h the cells were expanded threefold in fresh medium. These differentiated Th cells were harvested on day 7, washed, and counted.  $1.25 \times 10^5$  T cells were restimulated with OVA peptide and BALB/c splenocytes with or without addition of cytokines or anti-cytokine antibodies as indicated in the figure legends. Supernatants were collected after 48 h and analyzed by capture ELISA for IFN- $\gamma$  and IL-4 (29).

For immunoprecipitations from primary stimulations,  $1 \times 10^6$  Mel-14<sup>hi</sup>/CD4<sup>+</sup> DO11.10 T cells were stimulated in 10 ml cultures with OVA peptide (0.3  $\mu$ M) and irradiated BALB/c splenocytes ( $4 \times 10^7$ ) under the indicated primary culture conditions. At 72 h the cells were expanded 10-fold in fresh medium containing 40 U/ml IL-2. On day 5 after primary stimulation, the Th cells were washed and incubated in complete media containing 10% FCS for 3-12 h before incubation with cytokines.

**Immunoprecipitation and Western Blot Analysis.** Analysis of Stat4 tyrosine phosphorylation was performed as described (30). In brief, total cellular lysates of  $1.5-2.5 \times 10^7$  T cells were immunoprecipitated with anti-Stat4 antisera and resolved by SDS-PAGE. After transfer to nitrocellulose, blots were probed with RC20 (1:2,500). Blots were stripped and reprobed with anti-Stat4 antisera (1:3,000).

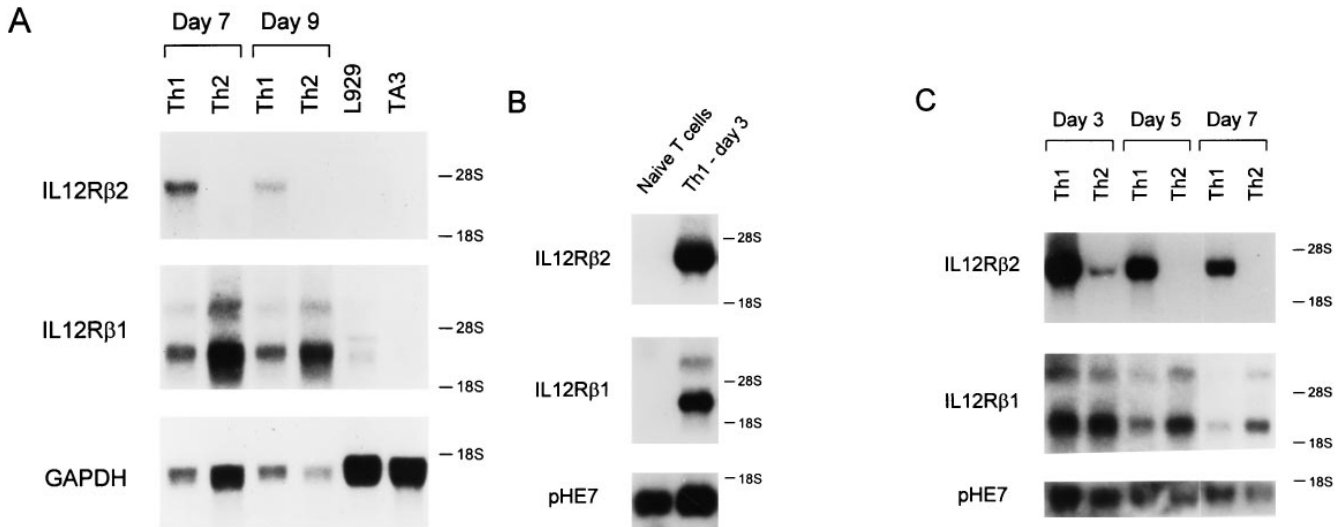
**Northern Blot Analysis.** Total T cell RNA was isolated from Th1 and Th2 cells using RNazol RNA isolation solvent (Tel-Test, Friendswood, TX). Northern blot analysis was performed with 15  $\mu$ g of total RNA per lane, and membranes were sequentially probed with the full-length murine IL-12 receptor  $\beta$ 1 subunit cDNA (31), the full-length murine IL-12 receptor  $\beta$ 2 subunit cDNA and the cDNAs for GAPDH (32) or pHE7 (33).

## Results

**The IL-12R  $\beta$ 2 Subunit Is Expressed in Th1, but not in Th2 Cells.** Mel-14<sup>hi</sup> CD4<sup>+</sup> T cells from DO11.10 TCR-transgenic mice were purified and activated with antigen in the presence of IL-12 and antibodies to IL-4, or IL-4 and antibodies to IL-12, for 7 d to generate polarized Th1 or Th2 populations (17). Subsequently, IL-12R expression was analyzed by Northern blotting on day 7 and 9 after secondary activation (Fig. 1 A). Th1 cells expressed the IL-12R  $\beta$ 2 mRNA at high levels on these days. In contrast, IL-12R  $\beta$ 2 mRNA was completely absent in Th2 cells harvested at these same time points. As we previously observed (17), IL-12R  $\beta$ 1 mRNA was present in both Th1 and Th2 cells (Fig. 1 A, top).

To determine how rapidly expression of IL-12R  $\beta$ 2 mRNA subsided during Th2 development, we induced Th1

<sup>1</sup>Abbreviation used in this paper: IL-2R, IL-12 receptor.



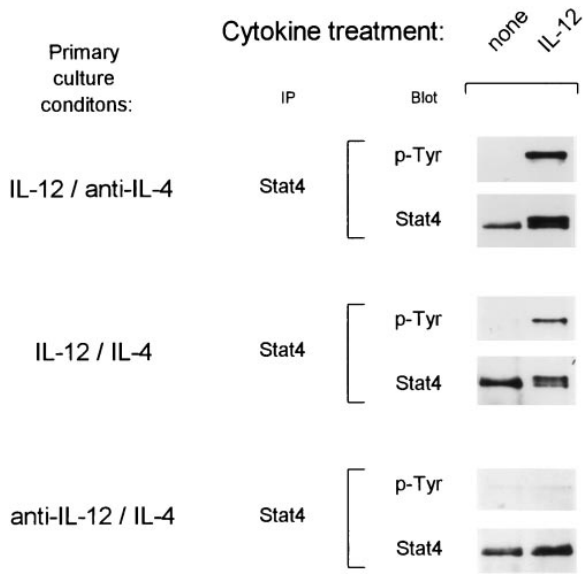
**Figure 1.** IL-12R  $\beta 2$  subunit mRNA is detected in Th1 but not Th2 cells. (A) Naive CD4<sup>+</sup> T cells were purified by FACS<sup>®</sup> from unimmunized DO11.10 TCR-transgenic mice as described in Materials and Methods (5), activated with OVA peptide and APCs under either Th1- or Th2-inducing conditions and allowed to develop for 7 days. On day 7, the Th1 and Th2 cells were washed, restimulated and allowed to proliferate for 7 or 9 d when cells were harvested and total cellular RNA was isolated. As tissue controls, total cellular RNA was isolated from the B cell hybridoma TA3 and the fibroblast cell line L929. Northern blot analysis was performed using as probes the full-length murine IL-12R  $\beta 2$  subunit cDNA (*top*), the full-length murine IL-12R  $\beta 1$  subunit cDNA (*middle*), and the GAPDH cDNA (*bottom*). (B and C). Total cellular RNA was isolated from naive T cells after purification by FACS<sup>®</sup>. Naive T cells isolated by cell sorting were activated to induce Th1 or Th2 development, and harvested on days 3, 5, and 7 after primary antigen activation. Total cellular RNA was examined by Northern analysis as described above for IL-12R  $\beta 2$  subunit cDNA (*top*), the IL-12R  $\beta 1$  subunit cDNA (*middle*), or pHE7 cDNA (*bottom*).

and Th2 differentiation from naive CD4<sup>+</sup> T cells and analyzed IL-12R  $\beta 2$  expression on days 3, 5, and 7 after primary activation. To test expression in naive T cells, we obtained naive CD4<sup>+</sup> T cells by cell sorting and prepared mRNA for Northern analysis (Fig. 1 B). Neither IL-12R  $\beta 1$  nor IL-12R  $\beta 2$  mRNA was detectable in naive T cells (Fig. 1 B). On days 3, 5, and 7 after primary activation, developing Th1 cells expressed high levels of both the IL-12R  $\beta 1$  and IL-12R  $\beta 2$  mRNA (Fig. 1, B and C). On day 3, Th2 cells expressed IL-12R  $\beta 1$  mRNA at comparable or slightly higher levels than Th1 cells, but expressed only very low levels of IL-12R  $\beta 2$  mRNA (Fig. 1 C). By days 5 and 7 after primary activation IL-12R  $\beta 2$  mRNA was undetectable in Th2 cells (Fig. 1 C).

*IL-4 and IFN- $\gamma$  Regulate Functional Responsiveness to IL-12.* We next asked what conditions controlled the maintenance of IL-12 signaling in developing Th cells. IL-4 was thought to dominate IL-12 for effects on T helper phenotype development (5, 34), since the addition of IL-4 and IL-12 together led to Th2 development both in TCR-transgenic and anti-CD3 driven systems (5, 34). We first wished to determine if it was the lack of IL-4 in primary cultures that allowed the maintenance of IL-12 responsiveness in developing Th1 cells. Thus, we activated naive T cells in the presence of IL-4 and IL-12 together in the primary culture and assessed IL-12 responsiveness on day 5 after primary stimulation (Fig. 2). Surprisingly, these T cells were able to phosphorylate Stat4 upon IL-12 treatment (Fig. 2, *middle*), similar to Th1 cells (Fig. 2, *top*), but unlike IL-12 unresponsive Th2 cells (Fig. 2, *bottom*). This maintenance of Stat4 phos-

phorylation correlated with functional IL-12 responses in these T cells as measured by IL-12-induced IFN- $\gamma$  production (Fig. 3). T cells arising from stimulation in IL-4 and IL-12 together showed significant IL-12 induced IFN- $\gamma$  production during restimulation (Fig. 3, *top*). Restimulation of these cells without exogenously added IL-12 led to production of 180 U/ml IFN- $\gamma$ , while addition of IL-12 increased IFN- $\gamma$  production to 400 U/ml. Because these T cells arose in IL-4, they acquired the Th2-type property of producing IL-4 and IL-10, two cytokines which inhibit IFN- $\gamma$  production (35, 36). In this system, IL-10 could also be produced by other cells used as APCs. Neutralization of IL-4 and IL-10 revealed a significantly increased IL-12-mediated induction of IFN- $\gamma$ , from less than 50 U/ml of IFN- $\gamma$  produced upon restimulation in the absence of IL-12 to 1,300 U/ml of IFN- $\gamma$  produced in the presence of IL-12 (Fig. 3, *top*). In contrast, the control Th2 cells produced very low amounts of IFN- $\gamma$  (20 U/ml) upon restimulation in the presence of IL-12, a level which was not increased by neutralization of IL-4 and IL-10 (Fig. 3, *bottom*). Taken together, these results therefore suggest that the presence of IL-12 during primary T cell activation, not the absence of IL-4, was responsible for maintenance of functional responsiveness to IL-12.

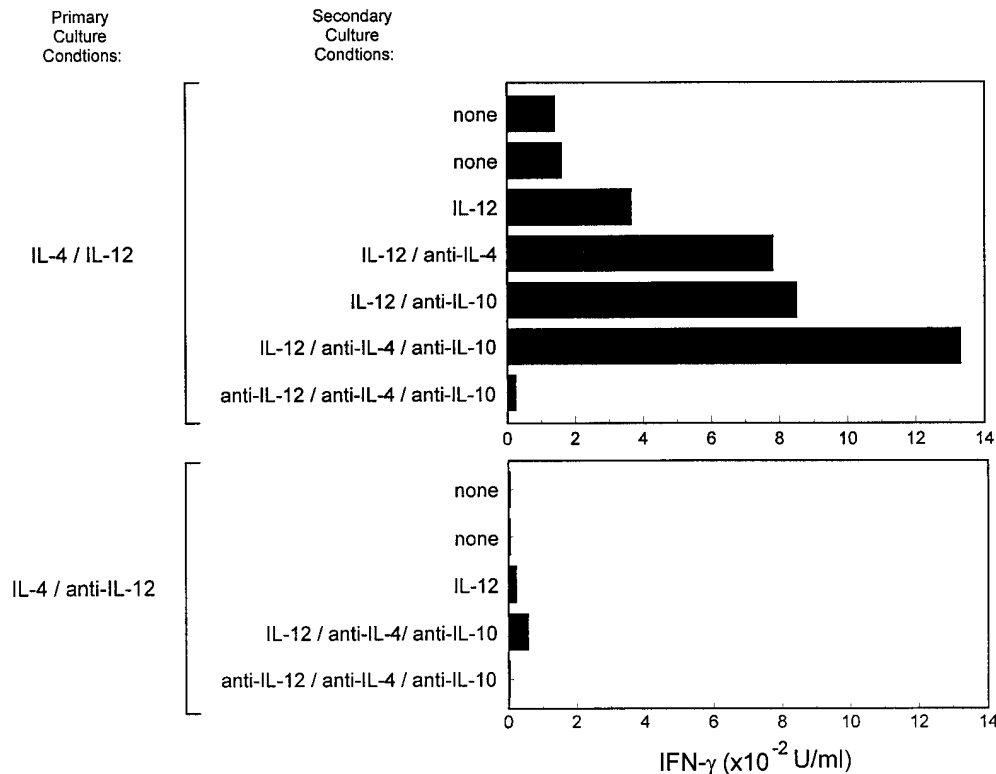
We suspected that IL-12 was not the primary stimulus for induction of the IL-12R  $\beta 2$  subunit, since a cytokine cannot signal unless its receptor is already expressed at some level on the cell surface. Previously, IFN- $\gamma$  has been shown to be required for IL-12-induced Th1 development from naive BALB/c T cells (7, 34). IL-12 is known to induce



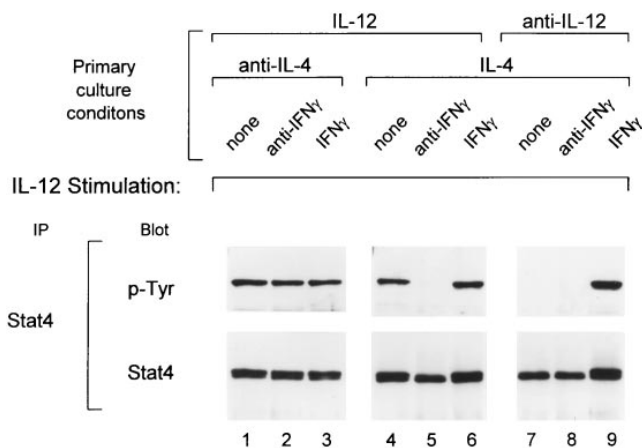
**Figure 2.** Activation in the presence of IL-4 and IL-12 results in the maintenance of the IL-12 signaling pathway. FACS<sup>®</sup>-sorted naive CD4<sup>+</sup> DO11.10 T cells were cultured with OVA peptide and irradiated BALB/c splenocytes in the presence of 10 U/ml IL-12 and 10  $\mu$ g/ml anti-IL-4 to promote Th1 differentiation (*upper*), 10 U/ml IL-12 and 200 U/ml IL-4 (*middle*), or 200 U/ml IL-4 and 3  $\mu$ g/ml anti-IL-12 to promote Th2 differentiation (*bottom*). After 72 h the cells were expanded 10-fold in fresh medium containing 40 U/ml IL-2. On day 5 after primary antigen activation whole cell lysates from developing T cells ( $1.5\text{--}2.0 \times 10^7$ ) were prepared after incubation for 25 min with medium alone or with 10 U/ml IL-12. Lysates were immunoprecipitated with Stat4 antiserum, separated by SDS-PAGE (7% gel), transferred to nitrocellulose, and probed with the anti-phosphotyrosine reagent RC20 as described (30). After exposure, blots were stripped and reprobed with anti-Stat4 antisera.

IFN- $\gamma$  production from CD4<sup>+</sup> and CD8<sup>+</sup> T cells, as well as NK cells. Since these cells are present in the irradiated splenocytes used as APCs, we suspected that IFN- $\gamma$  could be inducing the expression of the IL-12R  $\beta$ 2 subunit. To test this possibility, combinations of IL-12, IFN- $\gamma$  and IL-4, or the corresponding neutralizing antibodies were added during primary T cell activation and the IL-12 responsiveness of these developing Th cells was analyzed by measuring IL-12-induced Stat4-phosphorylation on day 5 after activation (Fig. 4). Th cells activated in the presence of both IL-12 and IL-4 maintained IL-12-induced Stat4 phosphorylation (Fig. 4, lane 4). The maintenance of IL-12 responsiveness on these cells was completely dependent on the production of endogenous IFN- $\gamma$  during primary activation, since neutralization of IFN- $\gamma$  abolished IL-12-induced Stat4 phosphorylation (Fig. 4, lane 5). Under Th2 inducing conditions (IL-4 and anti-IL-12), Th2 cells lost the ability to phosphorylate Stat4 in response to IL-12 (Fig. 4, lane 7). However, addition of IFN- $\gamma$  to this culture restored IL-12-induced Stat4 phosphorylation (Fig. 4, lane 9). Finally, under Th1 inducing conditions (IL-12 and anti-IL-4), T cells retained the ability to phosphorylate Stat4 in response to IL-12 in a manner that was independent of IFN- $\gamma$  (Fig. 4, lanes 1–3). In summary, (a) the presence of IL-4 during primary activation inhibits IL-12 signaling in developing Th cells, and (b) IFN- $\gamma$  is able to override this inhibition and restore IL-12 signaling in early Th cells.

*IL-4 and IFN- $\gamma$  Regulate Expression of the IL-12R  $\beta$ 2 Subunit.* To test whether IFN- $\gamma$ -induced restoration of IL-12 signaling involved induction of the IL-12R  $\beta$ 2 subunit, we performed Northern blot analysis of Th cells derived under



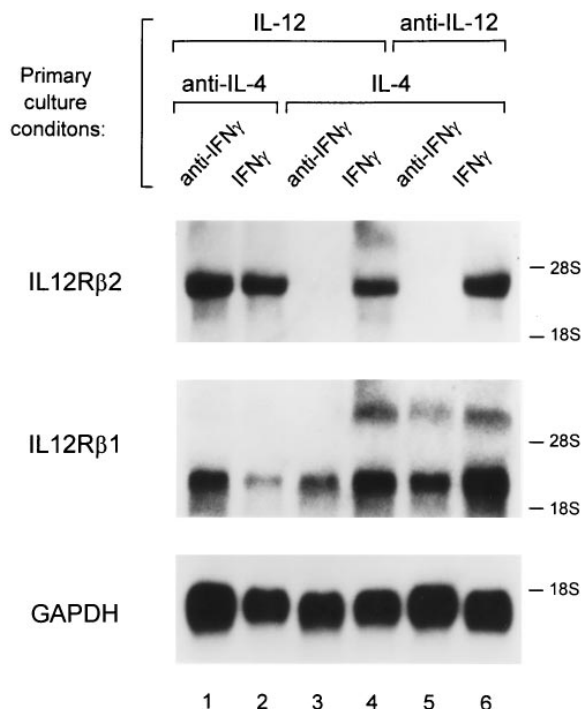
**Figure 3.** Activation in the presence of IL-4 and IL-12 results in the maintenance of functional IL-12 responsiveness. FACS<sup>®</sup>-sorted naive CD4<sup>+</sup> DO11.10 T cells were cultured for seven days with OVA peptide and irradiated BALB/c splenocytes under the indicated primary culture conditions. Cultures were harvested on day 7, washed, and restimulated at  $1.25 \times 10^5$  T cells/well with OVA peptide and BALB/c splenocytes in the presence of the indicated cytokines or anti-cytokine antibodies. Supernatants collected after 48 h were analyzed by ELISA for IFN- $\gamma$ .



**Figure 4.** IFN- $\gamma$  restores the IL-12 signaling pathway in developing Th2 cells. FACS<sup>®</sup>-sorted naive CD4<sup>+</sup> DO11.10 T cells were cultured with OVA peptide and irradiated BALB/c splenocytes under the conditions indicated. In the primary cultures, IFN- $\gamma$  levels were either unaltered (none), neutralized with 30  $\mu$ g/ml of the anti-IFN- $\gamma$  mAb H22 (anti-IFN- $\gamma$ ) or 100 U/ml of IFN- $\gamma$  (IFN- $\gamma$ ) were added as indicated. On day 5 after primary antigen activation whole cell lysates from developing T cells ( $20 \times 10^6$ ) were prepared after incubation for 25 min with 10 U/ml IL-12. Lysates were immunoprecipitated with Stat4 antiserum, separated by SDS-PAGE (7% gel), transferred to nitrocellulose, and probed with the anti-phosphotyrosine reagent RC20. After exposure, blots were stripped and reprobed with anti-Stat4 antisera.

the various conditions described in Fig. 4. T cells activated in the presence of both IL-4 and IL-12 expressed the IL-12R  $\beta$ 2 mRNA (Fig. 5, lane 4). This expression was dependent on endogenous IFN- $\gamma$  production, since neutralization of IFN- $\gamma$  in the primary culture led to the disappearance of IL-12R  $\beta$ 2 mRNA (Fig. 5, lane 3). T cells arising from stimulation in the presence of IL-4, anti-IL-12 mAb and exogenous IFN- $\gamma$  added during primary activation expressed high levels of the IL-12R  $\beta$ 2 mRNA (Fig. 5, lane 6). Addition of anti-IFN- $\gamma$  mAb blocked expression of IL-12R  $\beta$ 2 mRNA (Fig. 5, lane 5). Th1 cells, arising from stimulation in the presence of IL-12 plus anti-IL-4 mAb, expressed IL-12R  $\beta$ 2 mRNA independently of IFN- $\gamma$  (Fig. 5, lanes 1 and 2). Thus, in each case, IL-12-inducible Stat4 phosphorylation (Fig. 4) correlated with expression of the IL-12R  $\beta$ 2 mRNA (Fig. 5).

To examine whether IFN- $\gamma$  treatment of developing Th cells during primary culture altered functional responses to IL-12, we measured the IL-12-dependent IFN- $\gamma$  production in developing Th cells derived under the same conditions used in Fig. 5. Additionally, since production of endogenous IL-4 and IL-10 production by these cells directly inhibits IFN- $\gamma$  production, we neutralized these cytokines to more clearly assess the true potential of these cells for IL-12 induced IFN- $\gamma$  production. T cells arising from stimulation in IL-4 plus anti-IL-12 plus IFN- $\gamma$  responded to IL-12 by producing 550 U/ml of IFN- $\gamma$  in the secondary stimulation (Fig. 6, *top*), whereas addition of anti-IFN- $\gamma$  mAb led to cells producing less than 50 U/ml of IFN- $\gamma$  upon restimulation (Fig. 6, *bottom*). For T cells treated with IL-4 and IL-12 during primary activation, IFN- $\gamma$  in the

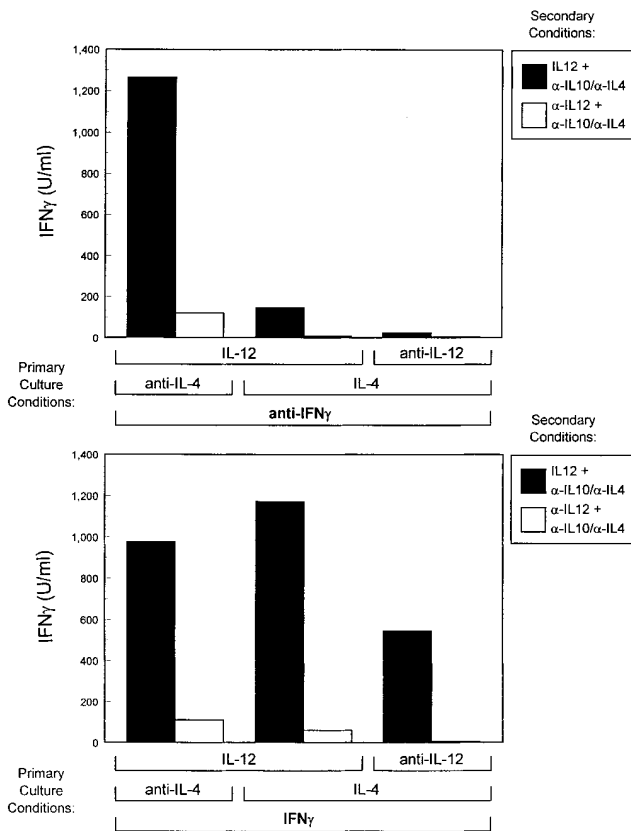


**Figure 5.** Regulation of IL-12R  $\beta$ 2 subunit mRNA expression by IFN- $\gamma$ . FACS<sup>®</sup>-sorted naive CD4<sup>+</sup> DO11.10 T cells were cultured with OVA peptide and irradiated BALB/c splenocytes under conditions indicated. On day 5 after primary antigen activation total cellular RNA was isolated from the developing Th cells. Sequential Northern blot analysis was performed using as probes the full-length murine IL-12R  $\beta$ 2 subunit cDNA (*top*), the full-length murine IL-12R  $\beta$ 1 subunit cDNA (*middle*), and the GAPDH cDNA (*bottom*).

primary culture was required for IL-12 induced IFN- $\gamma$  production upon secondary stimulation (Fig. 6, compare column 3 in top and bottom). For Th1 cells, arising from stimulation in the presence of IL-12 and anti-IL-4 mAbs, IFN- $\gamma$  was not required for subsequent development of IL-12 responsiveness (Fig. 6, compare column 1 in top and bottom). Thus, IFN- $\gamma$  regulates IL-12 responsiveness with the same pattern as it regulates IL-12R  $\beta$ 2 expression in developing Th cells (Fig. 5).

## Discussion

The data presented in this report provide a molecular basis for the previously described IL-12 unresponsiveness of Th2 cells and help explain several discrepancies that become apparent when comparing murine and human Th2 cells. Expression of the IL-12R  $\beta$ 2 subunit is required for recruitment and activation of the STAT proteins involved in IL-12 signaling (37). When IL-4 is neutralized by antibodies, TCR-activation alone is sufficient for inducing IL-12R  $\beta$ 2 expression. However, when even low levels of IL-4 are present, expression of the IL-12R  $\beta$ 2 is inhibited. Thus, during *in vitro* Th2 development, IL-12R  $\beta$ 2 expression is strongly inhibited by the IL-4 that is added to induce Th2 development. This inhibition leads to loss of IL-12 signaling capacity and helps to stabilize the emergent



**Figure 6.** Examination of the functional IL-12 responses of developing Th cells. FACS<sup>®</sup>-sorted naive CD4<sup>+</sup> DO11.10 T cells were cultured with OVA peptide and irradiated BALB/c splenocytes in the presence of the primary culture conditions indicated. Cultures were harvested on day 7, washed, and restimulated at  $1.25 \times 10^5$  T cells/well with OVA peptide and BALB/c splenocytes in the presence of anti-IL-4 mAb (10  $\mu$ g/ml 11B11) and anti-IL-10 (20  $\mu$ g/ml 2A5) and either IL-12 (10 U/ml) or anti-IL-12 (3  $\mu$ g/ml TOSH). Supernatants collected after 48 h were analyzed by ELISA for IFN- $\gamma$ .

Th2 response against reversal of phenotype upon subsequent IL-12 exposure. Loss of IL-12 responsiveness may thus be an early step in the commitment of T cells to the Th2 pathway.

Regarding the role of IFN- $\gamma$  in Th development, we find that IFN- $\gamma$  overrides the IL-4-induced inhibition of IL-12R  $\beta$ 2 expression. Thus, in T cells arising from stimulation with IL-4 and anti-IL-12 mAbs (i.e., fully Th2 inducing conditions), IFN- $\gamma$  treatment during primary activation restored IL-12R  $\beta$ 2 expression and functional IL-12 responsiveness. These T cells could produce IL-4 and IL-10 but retained the capacity for IL-12-induced IFN- $\gamma$  production. The ability of Th2 cells to respond to IL-12 has previously been described for human (38, 39), but not murine Th2 cells (16, 17). This discrepancy can now be explained as follows. Murine Th2 cells lose expression of the IL-12R  $\beta$ 2 due to the absence of IFN- $\gamma$  in Th2 cultures. Human Th2 cells, on the other hand, express low but functional levels of the IL-12R  $\beta$ 2 subunit, and human IL-12 R  $\beta$ 2 expression is induced by IFN- $\alpha$  rather than

IFN- $\gamma$  (Francesco Sinigaglia, personal communication). Elucidation of the molecular basis for this distinct form of regulation between these two species will require the direct examination of the promoter/enhancer regions of the respective IL-12R  $\beta$ 2 gene.

Our data also further clarify the role of IFN- $\gamma$  in Th1 development. Results from several previous reports (7, 40) indicated that IFN- $\gamma$ , although by itself not sufficient, was clearly required for IL-12-induced Th1 development from naive T cells. Other studies however did not identify such a requirement, even though similar TCR-transgenic experimental systems were used (41). This apparent discrepancy can now be explained by the established difference in IL-4 production that occurs in the two experimental mouse strains used. Studies that did not identify this requirement used TCR-transgenic mice on the C57/BL6 background in which very little IL-4 is produced (19, 28). The substantial amount of IL-4 produced by the BALB/c strain inhibits expression of IL-12R  $\beta$ 2 and imposes the observed requirement for IFN- $\gamma$  that allows IL-12R  $\beta$ 2 expression (Guler, M., N. Jacobson, U. Gubler, K. Murphy, manuscript in preparation). In the C57 or B10 backgrounds, the absence of IL-4 allows IL-12R  $\beta$ 2 expression to occur independently of IFN- $\gamma$ .

In this report IFN- $\gamma$  was not required for the expression of the IL-12 receptor  $\beta$ 2 subunit on T cells differentiated to the Th1 phenotype with IL-12 and anti-IL-4. This result may be due to the complete absence of IL-4 in these primary cultures, thus artificially creating C57/BL6 or B10-like conditions. Moreover, when Th1 differentiation was induced using either IL-12 alone or IL-12 plus a low level of IL-4 (2–5 U/ml) in the primary stimulation, a requirement for IFN- $\gamma$  during the primary activation for Th1 development was observed (data not shown). Thus a requirement for IFN- $\gamma$  during Th1 development may only be evident in situations where low levels of IL-4 are present. In contrast, when IL-4 is absent during primary stimulation IFN- $\gamma$  is not required for maintenance of the IL-12R  $\beta$ 2 subunit on developing Th cells.

Finally, our results may be relevant for understanding responses to certain intracellular pathogens. For example, resistance to *L. major* in various strains of mice is complex and probably controlled by several genetic loci. The present study implies that cytokines could act to promote either susceptibility or resistance to pathogens by their distinct actions on IL-12R  $\beta$ 2 expression. IL-4 inhibits expression of the IL-12R  $\beta$ 2 subunit and imposes a requirement for IFN- $\gamma$  to maintain IL-12 responsiveness. Thus, when IFN- $\gamma$  production is limited, IL-4 production in early responses may critically inhibit IL-12R  $\beta$ 2 expression, with significant impact on development of protective responses. In strains that produce IL-4 early, IFN- $\gamma$  production may be critical for inducing IL-12R  $\beta$ 2 expression on T helper cells to allow for IL-12-induced Th1 differentiation. NK cells may be an important in vivo source of such early IFN- $\gamma$  production, since IFN- $\gamma$  can be induced by the action of IL-12 and TNF on NK cells (42). As suggested by studies of the development of resistance to *L. major* (43, 44), NK cells may thus play an important role in Th1 development.

We thank Drs. E. Unanue and R. Schreiber for helpful discussions and reagents. We thank Dr. J. Darnell for his gift of anti-Stat antiserum.

This work was supported by National Institutes of Health grants AI34580, AI31238, and AI39676 and a grant from the American Cancer Society. S.J. Szabo was supported by training grant CA09547.

Address correspondence to Kenneth M. Murphy, Department of Pathology, Washington University School of Medicine, Campus Box 8118, 660 S. Euclid Ave., St. Louis, MO 63110.

Received for publication 25 November 1996 and in revised form 8 January 1997.

## References

1. Mosmann, T.R., and R.L. Coffman. 1989. Heterogeneity of cytokine secretion patterns and functions of helper T cells. *Adv. Immunol.* 46:111–147.
2. Sher, A., and R.L. Coffman. 1992. Regulation of immunity to parasites by T cells and T cell-derived lymphokines. *Ann. Rev. Immunol.* 10:385–409.
3. Fiorentino, D.F., M.W. Bond, and T.R. Mosmann. 1989. Two types of mouse T helper cell. IV. Th2 clones secrete a factor that inhibits cytokine production by Th1 clones. *J. Exp. Med.* 170:2081–2095.
4. Seder, R.A., and W.E. Paul. 1994. Acquisition of lymphokine-producing phenotype by CD4<sup>+</sup> T cells. *Ann. Rev. Immunol.* 12:635–673.
5. Hsieh, C.-S., S.E. Macatonia, C.S. Tripp, S.F. Wolf, A. O'Garra, and K.M. Murphy. 1993. Development of Th1 CD4<sup>+</sup> T cells through IL-12 produced by *Listeria*-induced macrophages. *Science (Wash. DC)*. 260:547–549.
6. Manetti, R., P. Parronchi, M.G. Giudizi, M.-P. Piccinni, E. Maggi, G. Trinchieri, and S. Romagnani. 1993. Natural killer cell stimulatory factor (interleukin 12 [IL-12]) induces T helper type 1 (Th1)-specific immune responses and inhibits the development of IL-4-producing Th cells. *J. Exp. Med.* 177:1199–1204.
7. Macatonia, S.E., C.S. Hsieh, K.M. Murphy, and A. O'Garra. 1993. Dendritic cells and macrophages are required for Th1 development of CD4<sup>+</sup> T cells from alpha beta TCR transgenic mice: IL-12 substitution for macrophages to stimulate IFN-gamma production is IFN-gamma-dependent. *Intl. Immunol.* 5:1119–1128.
8. Wenner, C.A., M.L. Guler, S.E. Macatonia, A. O'Garra, and K.M. Murphy. 1996. Roles of IFN-gamma and IFN-alpha in IL-12-induced T helper cell-1 development. *J. Immunol.* 156:1442–1447.
9. Le Gros, G., S.Z. Ben-Sasson, R.A. Seder, F.D. Finkelman, and W.E. Paul. 1990. Generation of interleukin 4 (IL-4)-producing cells in vivo and in vitro: IL-2 and IL-4 are required for in vitro generation of IL-4-producing cells. *J. Exp. Med.* 172:921–929.
10. Fiorentino, D.F., A. Zlotnik, T.R. Mosmann, M. Howard, and A. O'Garra. 1991. IL-10 inhibits cytokine production by activated macrophages. *J. Immunol.* 147:3815–3822.
11. Gajewski, T.F., and F.W. Fitch. 1988. Anti-proliferative effect of IFN-gamma in immune regulation. I. IFN-gamma inhibits the proliferation of Th2 but not Th1 murine helper T lymphocyte clones. *J. Immunol.* 140:4245–4252.
12. Pernis, A., S. Gupta, K.J. Gollob, E. Garfein, R.L. Coffman, C. Schindler, and P. Rothman. 1995. Lack of interferon-gamma receptor  $\beta$  chain and the prevention of interferon-gamma signaling in Th1 cells. *Science (Wash. DC)*. 269:245–247.
13. Bach, E.A., S.J. Szabo, A.S. Dighe, A. Ashkenazi, M. Aguet, K.M. Murphy, and R.D. Schreiber. 1995. Ligand-induced autoregulation of IFN-gamma receptor  $\beta$  chain expression in T helper cell subsets. *Science (Wash. DC)*. 270:1215–1218.
14. Nabors, G.S., L.C. Afonso, J.P. Farrell, and P. Scott. 1995. Switch from a type 2 to a type 1 T helper cell response and cure of established *Leishmania* major infection in mice is induced by combined therapy with interleukin 12 and Pentostam. *Proc. Natl. Acad. Sci. USA*. 92:3142–3146.
15. Holaday, B.J., M.D. Sadick, Z.E. Wang, S.L. Reiner, F.P. Heinzel, T.G. Parslow, and R.M. Locksley. 1991. Reconstitution of *Leishmania* immunity in severe combined immunodeficient mice using Th1- and Th2-like cell lines. *J. Immunol.* 147:1653–1658.
16. Perez, V.L., J.A. Lederer, A.H. Lichtman, and A.K. Abbas. 1995. Stability of Th1 and Th2 populations. *Int. Immunol.* 7:869–875.
17. Szabo, S.J., N.G. Jacobson, A.S. Dighe, U. Gubler, and K.M. Murphy. 1995. Developmental commitment to the Th2 lineage by extinction of IL-12 signaling. *Immunity*. 2:665–675.
18. Murphy, E., K. Shibuya, N. Hosken, P. Openshaw, V. Maino, K. Davis, K. Murphy, and A. O'Garra. 1996. Reversibility of T helper 1 and 2 populations is lost after long-term stimulation. *J. Exp. Med.* 183:901–913.
19. Guler, M.L., J.D. Gorham, C. Hsieh, A.J. Mackey, R.G. Steen, W.F. Dietrich, and K.M. Murphy. 1996. Genetic susceptibility to *Leishmania*: IL-12 responsiveness in Th1 development. *Science (Wash. DC)*. 271:984–987.
20. Reiner, S.L., S. Zheng, Z.-E. Wang, L. Stowring, and R.M. Locksley. 1994. *Leishmania* promastigotes evade interleukin 12 (IL-12) induction by macrophages and stimulate a broad range of cytokines from CD4<sup>+</sup> T cells curing initiation of infection. *J. Exp. Med.* 179:447–456.
21. Deleted in proof.
22. Tripp, C.S., M.K. Gately, J. Hakimi, P. Ling, and E.R. Unanue. 1994. Neutralization of IL-12 decreases resistance to *Listeria* in SCID and C.B-17 mice. Reversal by IFN-gamma. *J. Immunol.* 152:1883–1887.
23. Schreiber, R.D., L.J. Hicks, A. Celada, N.A. Buchmeier, and P.W. Gray. 1985. Monoclonal antibodies to murine gamma-interferon which differentially modulate macrophage activation and antiviral activity. *J. Immunol.* 134:1609–1618.
24. Zhong, Z., Z. Wen, and J.E. Darnell, Jr. 1994. Stat3: a STAT family member activated by tyrosine phosphorylation in response to epidermal growth factor and interleukin-6. *Science (Wash. DC)*. 264:95–98.
25. Zhong, Z., Z. Wen, and J.E. Darnell, Jr. 1994. Stat3 and Stat4: members of the family of signal transducers and activators of transcription. *Proc. Natl. Acad. Sci. USA*. 91:4806–4810.
26. Ohara, J., and W.E. Paul. 1985. Production of a monoclonal antibody to and molecular characterization of B-cell stimula-

- tory factor-1. *Nature (Lond.)*. 315:333–336.
27. Murphy, K.M., A.B. Heimberger, and D.Y. Loh. 1990. Induction by antigen of intrathymic apoptosis of CD4<sup>+</sup> CD8<sup>+</sup> TCR-lo thymocytes in vivo. *Science (Wash. DC)*. 250:1720–1723.
  28. Hsieh, C., S.E. Macatonia, A. O'Garra, and K.M. Murphy. 1995. T cell genetic background determines default T helper phenotype development in vitro. *J. Exp. Med.* 181:713–721.
  29. Urban, J.F., K.B. Madden, A. Svetic, A. Cheever, P.P. Trotta, W.C. Gause, I.M. Katona, and F.D. Finkelman. 1992. The importance of Th2 cytokines in protective immunity to nematodes. *Immunol. Rev.* 127:205–220.
  30. Jacobson, N.G., S.J. Szabo, R.M. Weber-Nordt, Z. Zhong, R.D. Schreiber, J.E.J. Darnell, and K.M. Murphy. 1995. Interleukin 12 signaling in T helper type 1 (Th1) cells involves tyrosine phosphorylation of signal transducer and activator of transcription (Stat)3 and Stat4. *J. Exp. Med.* 181:1755–1762.
  31. Chua, A.O., V.L. Wilkinson, D.H. Presky, and U. Gubler. 1995. Cloning and characterization of a mouse IL-12 receptor-beta component. *J. Immunol.* 155:4286–4294.
  32. Tokunaga, K., Y. Nakamura, K. Sakata, K. Fujimori, M. Ohkubo, K. Sawada, and S. Sakiyama. 1987. Enhanced expression of a glyceraldehyde-3-phosphate dehydrogenase gene in human lung cancers. *Cancer Res.* 47:5616–5619.
  33. Cao, X., C.A. Kozak, Y.J. Liu, M. Noguchi, E. O'Connell, and W. J. Leonard. 1993. Characterization of cDNAs encoding the murine interleukin 2 receptor (IL-2R) gamma chain: chromosomal mapping and tissue specificity of IL-2R gamma chain expression. *Proc. Natl. Acad. Sci. USA.* 90:8464–8468.
  34. Schmitt, E., P. Hoehn, C. Huels, S. Goedert, N. Palm, E. Rude, and T. Germann. 1994. T helper type 1 development of naive CD4<sup>+</sup> T cells requires the coordinate action of interleukin-12 and interferon-gamma and is inhibited by transforming growth factor-beta. *Eur. J. Immunol.* 24:793–798.
  35. Moore, K.W., A. O'Garra, R. De Waal Malefyt, P. Vieira, and T.R. Mosmann. 1993. Interleukin-10. *Ann. Rev. Immunol.* 11:165–190.
  36. Nielsch, U., S.G. Zimmer, and L.E. Babiss. 1991. Changes in NF-kappa B and ISGF3 DNA binding activities are responsible for differences in MHC and beta-IFN gene expression in Ad5- versus Ad12-transformed cells. *EMBO (Eur. Mol. Biol. Organ.) J.* 10:4169–4175.
  37. Presky, D.H., H. Yang, L.J. Minetti, A.O. Chua, N. Nabavi, C.Y. Wu, M.K. Gately, and U. Gubler. 1996. A functional interleukin 12 receptor complex is composed of two beta-type cytokine receptor subunits. *Proc. Natl. Acad. Sci. USA.* 93:14002–14007.
  38. Manetti, R., F. Gerosa, M.G. Giudizi, R. Biagiotti, P. Paronchi, M.P. Piccinni, S. Sampognaro, E. Maggi, S. Romagnani, G. Trinchieri et al. 1994. Interleukin 12 induces stable priming for interferon gamma (IFN-gamma) production during differentiation of human T helper (Th) cells and transient IFN-gamma production in established Th2 cell clones. *J. Exp. Med.* 179:1273–1283.
  39. Yssel, H., S. Fasler, J.E. de Vries, and R. De Waal Malefyt. 1994. IL-12 transiently induces IFN-gamma transcription and protein synthesis in human CD4<sup>+</sup> allergen-specific Th2 T cell clones. *Intl. Immunol.* 6:1091–1096.
  40. Hsieh, C.-S., S.E. Macatonia, A. O'Garra, and K.M. Murphy. 1993. Pathogen induced Th1 phenotype development in CD4<sup>+</sup> alpha-beta-TCR transgenic T cells is macrophage dependent. *Int. Immunol.* 5:371–382.
  41. Seder, R.A., R. Gazzinelli, A. Sher, and W.E. Paul. 1993. Interleukin 12 acts directly on CD4<sup>+</sup> T cells to enhance priming for interferon gamma production and diminishes interleukin 4 inhibition of such priming. *Proc. Nat. Acad. Sci. USA.* 90:10188–10192.
  42. Tripp, C.S., S.F. Wolf, and E.R. Unanue. 1993. Interleukin 12 and tumor necrosis factor alpha are costimulators of interferon gamma production by natural killer cells in severe combined immunodeficiency mice with listeriosis, and interleukin 10 is a physiologic antagonist. *Proc. Natl. Acad. Sci. USA.* 90:3725–3729.
  43. Scott, P. 1991. IFN-gamma modulates the early development of Th1 and Th2 responses in a murine model of cutaneous Leishmaniasis. *J. Immunol.* 147:3149–3155.
  44. Scharton, T.M., and P. Scott. 1993. Natural killer cells are a source of interferon gamma that drives differentiation of CD4<sup>+</sup> T cell subsets and induces early resistance of Leishmania major in mice. *J. Exp. Med.* 178:567–577.