

Calmodulin Binding to the 3614–3643 Region of RyR1 Is Not Essential for Excitation–Contraction Coupling in Skeletal Myotubes

KRISTEN M.S. O'CONNELL,¹ NAOHIRO YAMAGUCHI,² GERHARD MEISSNER,² and ROBERT T. DIRKSEN¹

¹Department of Pharmacology and Physiology, University of Rochester School of Medicine and Dentistry, Rochester, NY 14642

²Department of Biochemistry and Biophysics, University of North Carolina, Chapel Hill, NC 27599

ABSTRACT Calmodulin is a ubiquitous Ca²⁺ binding protein that modulates the in vitro activity of the skeletal muscle ryanodine receptor (RyR1). Residues 3614–3643 of RyR1 comprise the CaM binding domain and mutations within this region result in a loss of both high-affinity Ca²⁺-bound calmodulin (CaCaM) and Ca²⁺-free CaM (apoCaM) binding (L3624D) or only CaCaM binding (W3620A). To investigate the functional role of CaM binding to this region of RyR1 in intact skeletal muscle, we compared the ability of RyR1, L3624D, and W3620A to restore excitation–contraction (EC) coupling after expression in RyR1-deficient (dyspedic) myotubes. W3620A-expressing cells responded normally to 10 mM caffeine and 500 μM 4-chloro-*m*-cresol (4-cmc). Interestingly, L3624D-expressing cells displayed a bimodal response to caffeine, with a large proportion of cells (~44%) showing a greatly attenuated response to caffeine. However, high and low caffeine-responsive L3624D-expressing myotubes exhibited Ca²⁺ transients of similar magnitude after activation by 4-cmc (500 μM) and electrical stimulation. Expression of either L3624D or W3620A in dyspedic myotubes restored both L-type Ca²⁺ currents (retrograde coupling) and voltage-gated SR Ca²⁺ release (orthograde coupling) to a similar degree as that observed for wild-type RyR1, although L-current density was somewhat larger and activated at more hyperpolarized potentials in W3620A-expressing myotubes. The results indicate that CaM binding to the 3614–3643 region of RyR1 is not essential for voltage sensor activation of RyR1.

KEY WORDS: ryanodine receptor • muscle • calcium channel • caffeine • sarcoplasmic reticulum

INTRODUCTION

Excitation–contraction (EC)* coupling is the process by which membrane depolarization triggers Ca²⁺ release from the sarcoplasmic reticulum (SR), thereby resulting in muscle contraction. In contrast to cardiac EC coupling where the influx of extracellular Ca²⁺ triggers SR Ca²⁺ release through RyRs (Nabauer et al., 1989), EC coupling in skeletal muscle does not depend on Ca²⁺ influx (Armstrong et al., 1972), but rather relies on a unique bidirectional mechanical interaction between dihydropyridine receptors (DHPRs) in the surface membrane and RyRs in the SR (Nakai et al., 1996; Grabner et al., 1999; Avila and Dirksen, 2000). The skeletal muscle DHPR is a voltage-gated L-type Ca²⁺ channel (L-channel) that also functions as the voltage sensor for skeletal-type EC coupling. The skeletal muscle isoform of the ryanodine receptor (RyR1) functions as a large Ca²⁺-conducting intracellular Ca²⁺ release

channel located in the terminal cisternae of the SR. Depolarization-induced conformational changes in the skeletal muscle DHPR are transmitted to the release channel via interactions between the II-III loop of the α_{1S} subunit of the DHPR (Tanabe et al., 1990) and multiple cytoplasmic region(s) of RyR1 (Nakai et al., 1998), which ultimately result in the activation of RyR1 and the subsequent release of Ca²⁺ from the SR.

Both the DHPR α_{1S} subunit and RyR1 are required for the EC-coupling process in skeletal muscle; the absence of either results in a complete loss of both voltage-gated SR Ca²⁺ release and EC coupling. In α_{1S}-null (dysgenic) mice, the absence of the voltage sensor precludes voltage-gated activation of RyR1. Similarly, in RyR1-knockout (dyspedic) mice, the absence of the SR Ca²⁺ release channel eliminates the pathway for Ca²⁺ release from the SR. Interestingly, although dyspedic myotubes express sarcolemmal voltage sensors, there is a significant reduction in L-type Ca²⁺ channel function that is restored after reintroduction of RyR1 (Nakai et al., 1996). This observation provides strong evidence for a bidirectional interaction between the DHPR and RyR1, in which DHPRs not only send an orthograde signal to RyR1 to trigger SR Ca²⁺ release, but also receive a retrograde signal from RyR1 that enhances the Ca²⁺-conducting activity of the DHPR (Nakai et al., 1996; Grabner et al., 1999; Avila and Dirksen, 2000).

Address correspondence to Robert Dirksen, Department of Pharmacology and Physiology, University of Rochester School of Medicine and Dentistry, 601 Elmwood Avenue, Rochester, NY 14642. Fax: (585) 273-2652; E-mail: Robert_Dirksen@URMC.rochester.edu

*Abbreviations used in this paper: CaM, calmodulin; DHPR, dihydropyridine receptor; EC, excitation–contraction; 4-cmc, 4-chloro-*m*-cresol; L-channel, L-type Ca²⁺ channel; RyRs, ryanodine receptors; SR, sarcoplasmic reticulum.

Although activation of RyR1 during EC coupling depends on a reciprocal gating interaction with the skeletal muscle DHPR, RyR1 proteins also interact with a diverse group of other regulatory proteins and small molecules. The RyR1 homotetramer binds four FKBP12 proteins, one per monomer, and binding of FKBP12 regulates the proper gating of the release channel (Jayaraman et al., 1992; Brillantes et al., 1994). RyR1 also interacts with other proteins such as triadin, junctin, calsequestrin, and calmodulin (CaM) as well as small molecules such as Ca^{2+} , Mg^{2+} , and ATP (for review see MacKrell, 1999). In addition, the β -subunit of the DHPR also strongly influences voltage sensor activation of RyR1 (Beurg et al., 1999). All of these accessory proteins of EC coupling are present within sarcolemmal-SR junctions, suggesting that the functional unit of EC coupling in skeletal muscle may actually represent a macromolecular complex composed of the DHPR, RyR1, and various other modulatory proteins/molecules.

One of these modulatory proteins is the ubiquitous Ca^{2+} -sensing protein CaM. CaM is a small, highly conserved calcium-sensing protein that binds to a diverse group of targets and plays an important role in many cellular signaling pathways. The protein has a high degree of internal symmetry, containing four EF-hand Ca^{2+} binding motifs, two in the NH_2 -terminal lobe and two in the COOH -terminal lobe. This structural division between the NH_2 -terminal and COOH -terminal regions reflects a functional division between the two lobes (Jurado et al., 1999; Saimi and Kung, 2002). The protein undergoes a conformational change upon binding Ca^{2+} , exposing hydrophobic pockets in either lobe that permit effector binding (Jurado et al., 1999). Most CaM binding proteins bind CaCaM, whereas a few, including both α_{1S} (Pate et al., 2000; Sencer et al., 2001) and RyR1 (Tripathy et al., 1995; Moore et al., 1999; Yamaguchi et al., 2001; Samsó and Wagenknecht, 2002), are capable of binding both apoCaM and CaCaM. Although the functional importance of CaM binding to the skeletal muscle DHPR remains to be resolved, there has been considerable progress toward understanding the role of CaM in the modulation of RyR1 activity.

Each RyR1 tetramer binds four CaM molecules (1 CaM per RyR1 subunit) in both the absence and presence of Ca^{2+} . Interestingly, apoCaM and CaCaM bind to overlapping sites between residues 3614–3643 of RyR1 (Moore et al., 1999; Yamaguchi et al., 2001; Samsó and Wagenknecht, 2002). In the absence of CaM, activation of RyR1 exhibits a bell-shaped dependence on Ca^{2+} , with micromolar cytosolic concentrations causing activation and millimolar concentrations of Ca^{2+} inhibiting RyR1 activity (Tripathy et al., 1995). Addition of CaM in the presence of submicromolar Ca^{2+} causes further acti-

vation of RyR1, whereas at micromolar to millimolar Ca^{2+} , CaM inhibits RyR1 activity (Tripathy et al., 1995; Rodney et al., 2000). Thus, in *in vitro* assays, addition of CaM shifts the Ca^{2+} sensitivity of RyR1 to lower concentrations of Ca^{2+} . Although there is considerable evidence to suggest that CaM exerts a profound modulatory effect on isolated RyR1 activity, the prominent role of CaM in multiple cellular signaling pathways presents an obstacle to isolating the effect of CaM on EC coupling in intact muscle cells. However, the recent identification of two residues within the 3614–3643 region that disrupt specific RyR1–CaM interactions provides a valuable tool for examining the role of CaM in EC coupling. Substitution of an alanine residue for W3620 selectively disrupts the interaction of CaCaM with RyR1, whereas an aspartate substitution at L3624 disrupts the binding and regulation by both apoCaM and CaCaM (Yamaguchi et al., 2001).

To investigate the impact of apoCaM and CaCaM binding to RyR1 on EC coupling, we have functionally characterized the activity of dyspedic myotubes expressing either wild-type RyR1, W3620A, or L3624D. Our results indicate that neither apoCaM nor CaCaM binding to the 3614–3643 region of RyR1 is required for bidirectional signaling with the skeletal muscle DHPR. Although neither L3624D nor W3620A eliminated voltage-dependent Ca^{2+} release, the W3620A mutation resulted in a significant increase in L-channel conductance and a slight hyperpolarizing shift in the voltage dependence of activation of L-channel conductance and SR Ca^{2+} release. Nevertheless, the response of W3620A-expressing myotubes to both caffeine and 4-chloro-*m*-cresol (4-cmc) was indistinguishable from that of wild-type RyR1. Surprisingly, a significant population of myotubes expressing L3624D (~44%) showed a markedly attenuated response to caffeine, whereas normal responsiveness to activation by both 4-cmc and depolarization was retained. The results indicate that CaM binding to RyR1 is not essential for voltage-dependent Ca^{2+} release by RyR1, but does impact selective ligand activation of the *in situ* SR Ca^{2+} release channel.

MATERIALS AND METHODS

Preparation and Microinjection of Dyspedic Myotubes

Myotubes were prepared from the skeletal muscle of newborn normal and dyspedic mice as described previously (Nakai et al., 1996; Avila and Dirksen, 2000, 2001). L3624D and W3620A were constructed as described previously (Yamaguchi et al., 2001). Expression of RyR1, L3624D, and W3620A in individual dyspedic myotubes was accomplished by microinjection of nuclei with cDNA encoding CD8 (0.2 $\mu\text{g}/\mu\text{l}$) and either RyR1, L3624D, or W3620A (0.5 $\mu\text{g}/\mu\text{l}$). Expressing myotubes were subsequently identified 48–72 h postinjection by incubation with CD8 antibody-coated beads (Dynabeads; Dynal ASA).

Intracellular Ca²⁺ Measurements in Intact Myotubes

Intracellular Ca²⁺ was measured in intact (nonpatched) myotubes loaded with the fluorescent Ca²⁺ indicator Indo-1 AM (Molecular Probes) as described previously (Avila et al., 2001). Indo-1-loaded myotubes were excited at 350 nm using a DeltaRam illumination system (Photon Technology, Inc.). Fluorescence emission at 405 and 485 nm was monitored using a 40× (1.35 NA) oil immersion objective, collected using a photomultiplier detection system, and the results presented as the ratio (R) of F₄₀₅/F₄₈₅. Caffeine (10 mM) and 4-chloro-*m*-cresol (4-cmc, 500 μM) were prepared in normal rodent Ringer's solution (see below) and applied using a rapid perfusion system (Warner Instruments, Inc.) that permits fast, local application of agonist as well as rapid washout with control solution (Avila et al., 2001). During each experiment, myotubes were continuously perfused with either control or agonist-containing Ringer's solution. Multiple myotubes were measured per dish and bulk gravity perfusion (~10 ml) with control Ringer's was used to wash the dish between each measurement. Peak intracellular Ca²⁺ changes in response to agonist application are expressed as ΔRatio (R_{agonist} - R_{baseline}). For measurements of electrically evoked Ca²⁺ transients in intact myotubes, Indo-1 AM-loaded cells were stimulated (8 V for 20 ms at 0.5 Hz for 30 s) with an extracellular pipette (Avila et al., 2001). Data were analyzed using FeliX (Photon Technology, Inc.) and SigmaPlot 2000 (SPSS, Inc.) software packages. Caffeine response histograms were fitted according to a standard Gaussian equation of the following general form:

$$f(x) = \sum_{i=1}^n A_n \frac{e^{-(x-\mu_i)^2/2\sigma_i^2}}{\sigma_i \sqrt{2\pi}} \quad (1)$$

Simultaneous Measurement of Voltage-gated L-Channel Activity and SR Ca²⁺ Release

The whole-cell patch clamp technique was used to simultaneously measure voltage-gated L-type Ca²⁺ currents (L-currents) and Ca²⁺ transients in RyR1-, L3624D-, and W3620A-expressing myotubes. A 1-s prepulse to -30 mV was used to inactivate Na⁺ channels and T-type Ca²⁺ channels. L-currents were online leak-subtracted using -P/3 delivered from the holding potential (-80 mV) before each test pulse. Peak currents were normalized to total cell capacitance (pA/pF), plotted as a function of test potential, and fitted according to:

$$I = G_{\max} * (V_m - V_{\text{rev}}) / \{1 + \exp[(V_{G1/2} - V_m) / k_G]\}, \quad (2)$$

where G_{max} is the maximal L-channel conductance, V_m is the test potential, V_{rev} is the extrapolated reversal potential, V_{G1/2} is the potential for half-maximal activation of G_{max}, and k_G is a slope factor.

To measure relative changes in voltage-gated SR Ca²⁺ release in patch-clamped myotubes, the Ca²⁺ indicator K₅-Fluo-3 (Molecular Probes) was included in the patch pipette internal solution and allowed to dialyze ~5 min before all recordings. Myotubes were excited at 488 nm and fluorescence emission at 535 nm was collected using a photomultiplier system (Photon Technology, Inc.). Fluorescence traces were analogue filtered (τ = 0.5 ms) before digitization at 10 kHz and are expressed as ΔF/F ([F_{peak} - F_{base}]/F_{base}). Peak fluorescence during each test pulse was plotted as a function of test potential (V_m) and fitted according to:

$$\Delta F/F = (\Delta F/F)_{\max} / \{1 + \exp[(V_{F1/2} - V_m) / k_F]\}, \quad (3)$$

where (ΔF/F)_{max} is the maximal fluorescence change, V_{F1/2} is the potential for half-maximal activation, and k_F is a slope factor.

Recording Solutions

Intracellular Ca²⁺ changes in Indo-1-loaded myotubes were measured from myotubes bathed in normal rodent Ringer's (in mM): 145 NaCl, 5 KCl, 2 CaCl₂, 1 MgCl₂, and 10 Hepes, pH 7.4 with NaOH. The internal solution for macroscopic L-current recordings contained (in mM): 145 Cs-aspartate, 0.1 Cs₂-EGTA, 1.2 MgCl₂, 5 MgATP, 0.2 K₅-Fluo-3 (Molecular Probes), and 10 Hepes, pH 7.4 with CsOH. The external solution contained (in mM): 145 TEACl, 10 CaCl₂, 0.003 TTX (Molecular Probes), and 10 HEPES, pH 7.4 with TEA-OH. Unless otherwise indicated, all chemicals were from Sigma-Aldrich.

RESULTS

Effects of Mutations within the CaM Binding Region of RyR1 on Agonist-induced SR Ca²⁺ Release

In normal myotubes (derived from skeletal muscle of phenotypically normal mice and expressing normal amounts of RyR1 protein), application of 10 mM caffeine typically elicited a rapid peak Ca²⁺ release that is followed by a maintained plateau phase (Fig. 1 A, left). Less frequently, application of 10 mM caffeine produced repetitive Ca²⁺ oscillations (Fig. 1 A, right). RyR1-expressing dyspedic myotubes also displayed both of these type of responses (Fig. 1 B); however, a larger proportion of RyR1-expressing dyspedic myotubes exhibited Ca²⁺ oscillations (76%; 98/129). By contrast, uninjected dyspedic myotubes respond only very weakly, if at all, to 10 mM caffeine (Fig. 1 C), which likely arises from variable expression of RyR3 in dyspedic myotubes, as suggested previously (Takeshima et al., 1994).

[³H]Ryanodine binding and single channel measurements have shown that CaM shifts the Ca²⁺ sensitivity of RyR1 toward lower concentrations of Ca²⁺ (Tripathy et al., 1995; Fruen et al., 2000; Rodney et al., 2000). Application of 10 mM caffeine to dyspedic myotubes expressing W3620A, which binds apoCaM but not CaCaM (Yamaguchi et al., 2001), resulted in a response identical in amplitude and profile to that of RyR1, with 83% (88/106) of W3620A-expressing myotubes exhibiting Ca²⁺ oscillations (Fig. 1 D, W3620A). Expression of L3624D, which almost completely abolishes both apoCaM and CaCaM binding (Yamaguchi et al., 2001), resulted in an average peak caffeine response that is significantly lower than that observed for RyR1-expressing myotubes (Fig. 1 F). However, underlying this decrease in the average response are two distinct populations of L3624D-expressing myotubes: one that responds to caffeine much like RyR1 (Fig. 1 E, left) and another that displays a very weak response to 10 mM caffeine (Fig. 1 E, right). For subsequent analysis, we have defined a weak caffeine response as any myotube in which ΔRatio was ≤0.4; ~44% (68/153) of all L3624D-expressing myotubes responded with a ΔRatio <0.4 (Fig. 1 G). In an attempt to more rigorously quantify this observation, we plotted the ΔRatio values re-

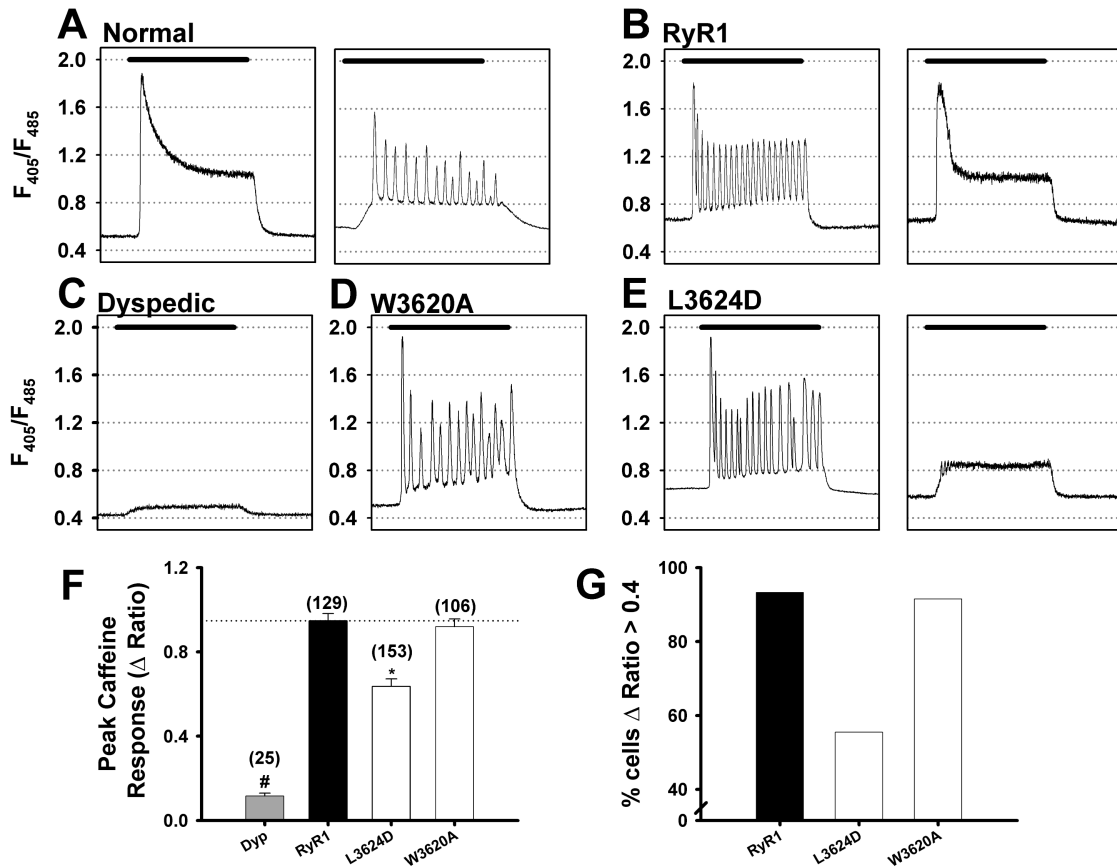


FIGURE 1. Caffeine response of Indo-1 AM-loaded dyspedic myotubes expressing CaM binding-deficient RyR1 mutants. Caffeine-induced Ca²⁺ release (10 mM, black bar) for normal myotubes (A), dyspedic myotubes (C), RyR1- (B), W3620A- (D), and L3624D-expressing (E) myotubes. Bars, 60 s. (F) Average peak caffeine-induced Ca²⁺ release ($\Delta\text{Ratio} = R_{\text{caffeine}} - R_{\text{baseline}}$; where R_{caffeine} is the peak ratio following caffeine application; *, $P < 0.001$). (G) Percentage of RyR1-, L3624D-, and W3620A-expressing myotubes exhibiting a peak caffeine-induced Ca²⁺ release with $\Delta\text{Ratio} > 0.4$.

corded from a large number of RyR1-, L3624D-, and W3620A-expressing myotubes as a frequency distribution (Fig. 2 A). Not surprisingly, data for both RyR1 ($n = 129$) and W3620A ($n = 106$) are reasonably well described by a single Gaussian distribution. However, data obtained from L3624D-expressing myotubes ($n = 153$) clearly fall into two distinct populations, one centered around $\Delta\text{Ratio} \sim 0.2$ and another centered around $\Delta\text{Ratio} \sim 0.8$ (Fig. 2 A), consistent with the observation that some L3624D-expressing cells respond similarly to RyR1, whereas the rest respond only weakly to 10 mM caffeine. It is unlikely that this difference arises from an increase in the threshold for caffeine activation, as application of 30 mM caffeine also failed to elicit a normal release in L3624D-expressing myotubes that showed an attenuated response to 10 mM caffeine (unpublished data).

One possible explanation for this observation is that the L3624D mutation significantly impairs expression and/or assembly of functional RyR1 channels, since the mean ΔRatio of the weakly responsive population of

L3624D-expressing cells is only slightly higher than that observed for uninjected dyspedic myotubes. We have previously documented that dyspedic myotubes exhibit a significantly lower resting Ca²⁺ level than RyR1-expressing myotubes (Avila et al., 2001). Therefore, resting Ca²⁺ measurements provide a means of verifying expression of functional SR Ca²⁺ release channels. Fig. 2 B shows resting F_{405}/F_{485} ratios for dyspedic, RyR1-, L3624D-, and W3620A-expressing myotubes. In accordance with previous results, reintroduction of RyR1 increases cytosolic Ca²⁺ levels above that found in uninjected dyspedic myotubes (resting F_{405}/F_{485} ratios were 0.46 ± 0.01 and 0.65 ± 0.01 for uninjected [or CD8 sham-injected; Avila et al., 2001] and RyR1-expressing dyspedic myotubes, respectively). W3620A-expressing myotubes and both low and high caffeine-responsive L3624D-expressing myotubes exhibited resting ratios that were not significantly different from that of RyR1. However, for each expression condition (RyR1-, W3620A-, and both low and high caffeine-responsive L3624D-expressing myotubes), resting ratios were sig-

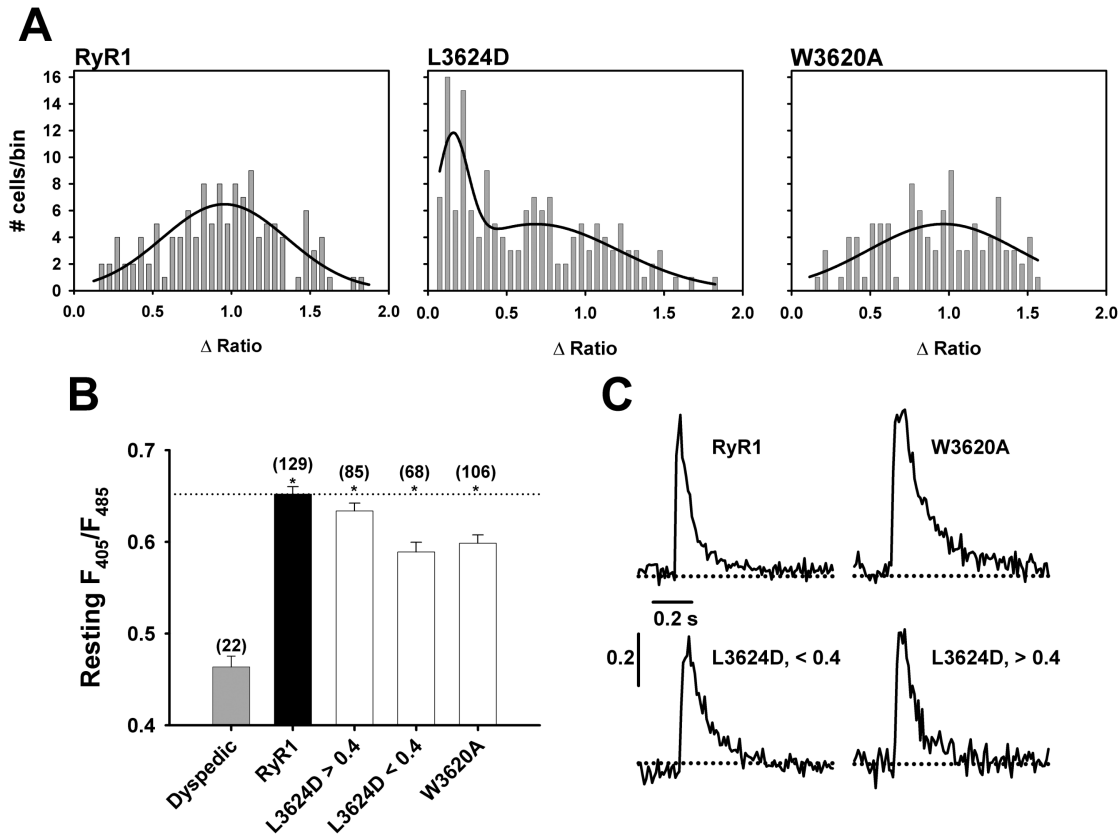


FIGURE 2. The caffeine response of L3624D-expressing myotubes exhibits a caffeine response distribution. (A) Caffeine response histograms. Data are binned at 0.05 Δ Ratio units and fit according to Eq.1 as described in MATERIALS AND METHODS. RyR1- and W3620A-expressing myotubes exhibit a single Gaussian distribution ($A = 5.19$, $\mu = 0.96$, $\sigma = 0.38$ for RyR1, $n = 129$ and $A = 6.0$, $\mu = 0.95$, $\sigma = 0.48$ for W3620A, $n = 106$). The caffeine response for L3624D-expressing myotubes exhibits a bimodal distribution ($A_1 = 2.7$, $\mu_1 = 0.16$, $\sigma_1 = 0.14$ and $A_2 = 4.4$, $\mu_2 = 0.68$, $\sigma_2 = 0.45$ for L3624D, $n = 153$). (B) Resting F_{405}/F_{485} ratios (*, $P < 0.001$ with respect to dyspedic). (C) RyR1, W3620A, and both populations of L3624D-expressing myotubes exhibit similar, rapidly activating global intracellular Ca^{2+} transients.

nificantly higher than that of uninjected dyspedic myotubes (Fig. 2 B). These results indicate that functional Ca^{2+} release channels are expressed in myotubes microinjected with cDNA encoding L3624D, regardless of their response to caffeine.

Another indication of functional release channel expression in L3624D cDNA-injected myotubes that responded poorly to caffeine was the presence of spontaneous global Ca^{2+} transients (Fig. 2 C) in these cells. Spontaneous, action potential-evoked global Ca^{2+} transients such as those depicted in Fig. 2 C are characterized by a rapid rise (~ 10 ms) and decay (~ 200 ms) and are generally smaller than caffeine-induced Ca^{2+} transients. Thus, these rapid global Ca^{2+} release events likely arise from spontaneous electrical activity that result in DHPR activation of SR Ca^{2+} release channels. Additionally, there was no difference in the population of cells that displayed spontaneous fast transients among RyR1, L3624D, and W3620A-expressing myotubes (with 11.8%, 8.5%, and 12.4% of RyR1-, W3620A-, and L3624D-expressing myotubes exhibiting spontaneous transients, respectively). Moreover, similar percent-

ages were observed for L3624D-expressing myotubes that displayed a robust response to caffeine (Δ Ratio > 0.4 ; 12.9%) and those that only weakly responded to caffeine (Δ Ratio < 0.4 ; 11.8%). By comparison, due to the absence of RyR1, dyspedic myotubes are incapable of exhibiting rapid global changes in $[Ca^{2+}]_i$ that is activated by spontaneous electrical activity (EC coupling). Thus, the presence of spontaneous global Ca^{2+} transients in L3624D-expressing myotubes that exhibited a weak caffeine response (i.e., Δ Ratio < 0.4) provides further evidence for the expression of functional release channels in these cells and suggests that the L3624D mutation may selectively alter caffeine activation of the SR Ca^{2+} release channel.

To determine whether the decrease in activation by caffeine in L3624D-expressing cells was specific for caffeine or reflects a general loss of pharmacological activation of the release channel, we also examined the sensitivity to activation by 4-chloro-*m*-cresol (4-cmc). 4-cmc is a potent RyR1-selective agonist that, unlike caffeine, has no effect on RyR3, presumably because the site of action for 4-cmc is distinct from that of caffeine

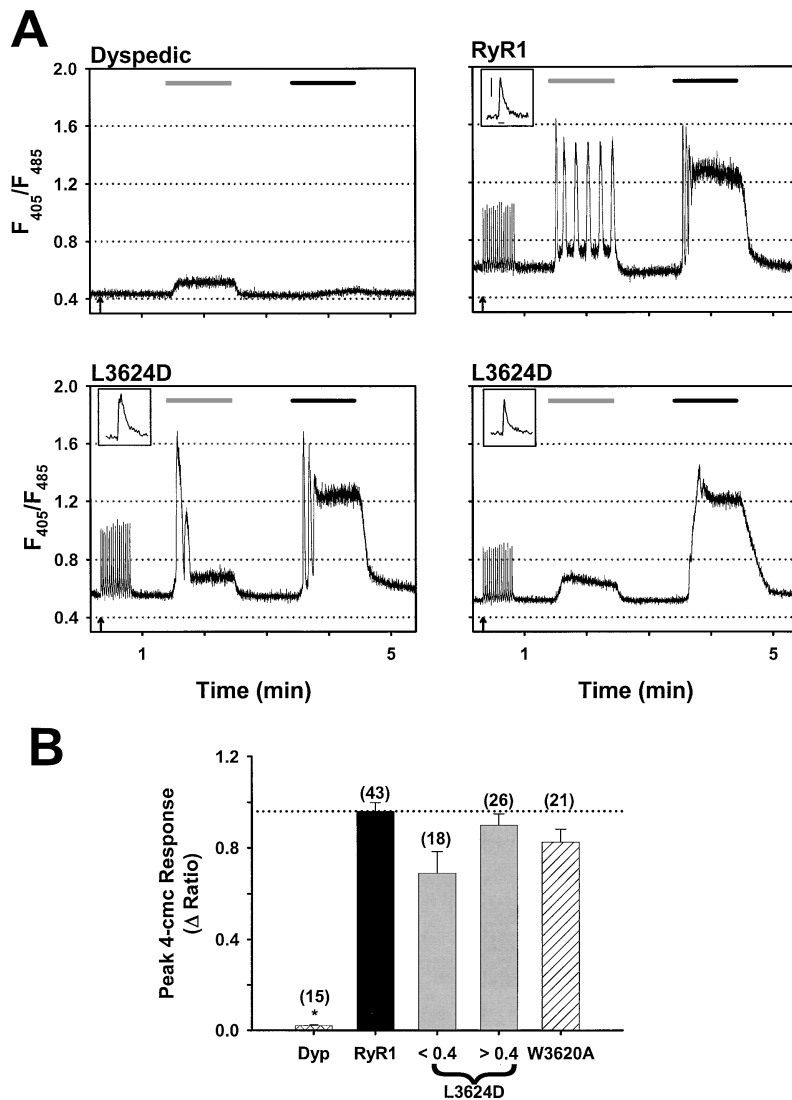


FIGURE 3. CaM binding-deficient RyR1 mutants respond normally to both electrical stimulation and 4-cmc. (A) Representative traces for dyspedic, RyR1-, and L3624D-expressing myotubes. Arrows indicate the beginning of a train of electrical stimuli (30 s, 20-ms pulses of 8 V at 0.5 Hz). The light gray bars (60 s) define periods of 10 mM caffeine application and black bars (60 s) define periods of 500 μ M 4-cmc application. (Insets) The final electrically evoked Ca^{2+} transient from each train is shown on an expanded scale (scale bars: 0.2 Δ Ratio and 0.2 s shown for RyR1 applies to each inset). (B) Average peak response to 4-cmc (Δ Ratio = $R_{4-cmc} - R_{baseline}$, *, $P < 0.001$) for uninjected dyspedic myotubes, RyR1-expressing myotubes, low and high caffeine-responsive L3624D-expressing myotubes, and W3620A-expressing myotubes. Number of experiments is given in parentheses above each bar.

(Fessenden et al., 2000). Consistent with this observation, application of 10 mM caffeine elicits a small response in dyspedic myotubes while 500 μ M 4-cmc generates almost no response (Fig. 3 A, top left). Application of 500 μ M 4-cmc to both RyR1- (Fig. 3 A, top right) and W3620A-expressing dyspedic myotubes produces a response that is similar in amplitude to that of 10 mM caffeine (Fig. 3 B). Not surprisingly, application of 4-cmc to L3624D-expressing myotubes that exhibit a robust caffeine response also displayed a large response to 500 μ M 4-cmc (Fig. 3 A, bottom left). However, 4-cmc also elicited large Ca^{2+} transients even in L3624D-expressing myotubes that only weakly responded to 10 mM caffeine (Fig. 3 A, bottom right, and B). Furthermore, repetitive trains of electrical stimulation (8 V for 20 ms at 0.5 Hz for 30 s initiated at the arrows in Fig. 3) evoked Ca^{2+} transients of similar magnitude and kinetics (see insets to Fig. 3 A) in both caffeine-responsive and nonresponsive L3624D-expressing myotubes.

Similar trains of electrically evoked Ca^{2+} transients were also observed in RyR1-expressing (Fig. 3 A) and W3620A-expressing myotubes (unpublished data).

Effects of the L3624D and W3620A Mutations on the Orthograde and Retrograde Signals of Skeletal Muscle EC Coupling

EC coupling in skeletal muscle involves a unique bidirectional signaling interaction between RyR1 and DHPR proteins, with the DHPR functioning as an activator of SR Ca^{2+} release (orthograde coupling) and RyR1 enhancing the Ca^{2+} conducting activity of the DHPR (retrograde coupling) (Nakai et al., 1996; Grabner et al., 1999; Avila and Dirksen, 2000). To examine the role of CaM binding to RyR1 on these two coupling mechanisms, we used the whole-cell patch clamp technique in conjunction with intracellular Ca^{2+} measurements to simultaneously measure voltage-gated

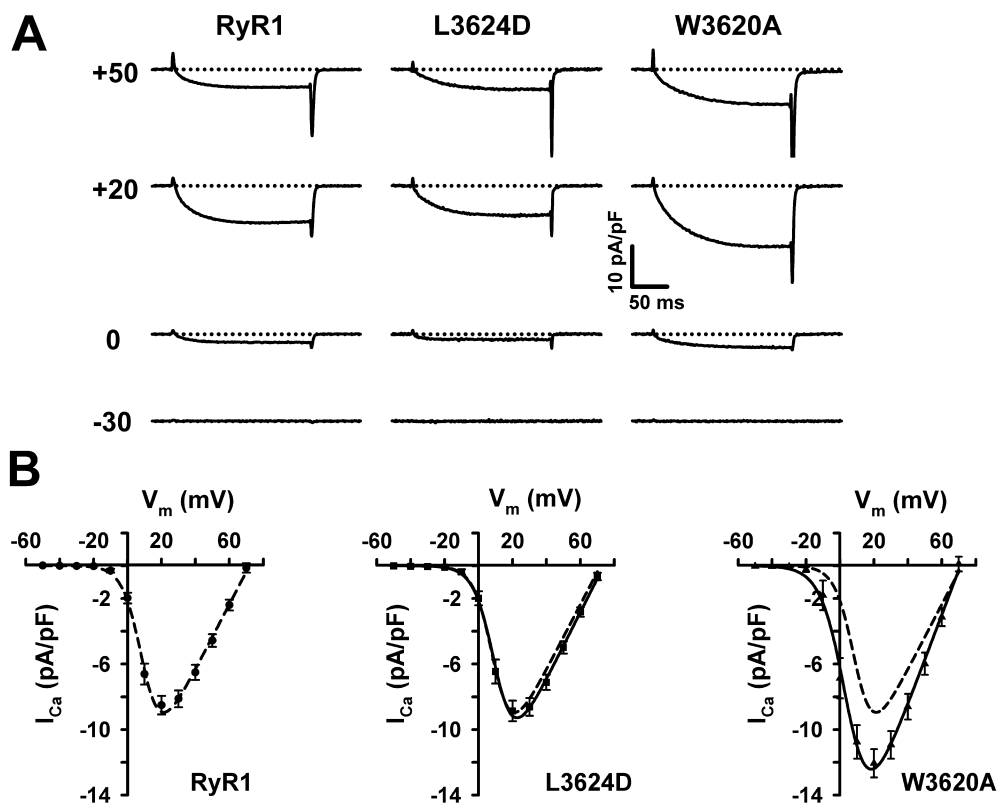


FIGURE 4. CaM binding-deficient RyR1 mutants restore voltage-gated L-channel activity (retrograde coupling) after expression in dyspedic myotubes. (A) L-currents elicited in response to 200-ms depolarizations to the indicated potentials for representative RyR1- (left), L3624D- (middle), and W3620A-expressing (right) myotubes. (B) Average peak I-V relationships for RyR1-, L3624D-, and W3620A-expressing myotubes. The lines through the data represent Boltzmann fits of the average data using Eq. 2. For L3624D and W3620A, a dashed line representing the fit of the RyR1 data is also shown for comparison.

L-type Ca^{2+} currents and SR Ca^{2+} release from dyspedic myotubes expressing either wild-type RyR1, L3624D, or W3620A. In agreement with previous reports (Nakai et al., 1996; Avila et al., 2001), dyspedic myotubes did not release Ca^{2+} upon membrane depolarization and displayed a very low L-current density (unpublished data). Reintroduction of RyR1 into dyspedic myotubes restored both robust L-channel activity (retrograde coupling) (Fig. 4 A) and voltage-gated SR Ca^{2+} release (orthograde coupling) (Fig. 5 A). Expression of L3624D and W3620A also resulted in restoration of both retrograde and orthograde coupling. L-channel conductance of L3624D-expressing myotubes was nearly identical in amplitude and voltage de-

pendence to that of RyR1-expressing myotubes (RyR1: $G_{\max} = 202 \pm 11$ nS/nF, $V_{G1/2} = 9.7 \pm 1.0$ mV; L3624D: $G_{\max} = 203 \pm 11$ nS/nF, $V_{G1/2} = 10.4 \pm 1.4$ mV) (Fig. 4 B, Table I). Importantly, all cells positively identified as expressing L3624D displayed robust L-currents and Ca^{2+} transients, suggesting that the failure of some L3624D-expressing myotubes to fully respond to caffeine does not extend to activation by the voltage sensor. In contrast to L3624D, myotubes expressing W3620A exhibited an L-channel current density that was significantly larger (and slightly shifted to more negative potentials) than that of RyR1-expressing myotubes (W3620A: $G_{\max} = 270 \pm 16$ nS/nF, $V_{F1/2} = 3.8 \pm 2.2$ mV).

TABLE I
Parameters of I-V and F-V Curves

n	I-V				F-V			
	G_{\max}	k	$V_{1/2}$	V_{rev}	$\Delta F/F_{\max}$	k	$V_{1/2}$	
	nS/nF	mV	mV	mV		mV	mV	
RyR1	27	202 ± 11	5.1 ± 0.2	9.7 ± 1.0	71.8 ± 1.4	4.0 ± 0.5	3.7 ± 0.3	0.1 ± 1.1
L3624D	28	203 ± 11	4.8 ± 0.3	10.4 ± 1.4	74.5 ± 1.5	3.6 ± 0.4	3.7 ± 0.3	1.6 ± 1.4
W3620A	18	270 ± 16^a	4.1 ± 0.4	3.8 ± 2.2^a	70.4 ± 1.8	3.9 ± 0.6	3.0 ± 0.3	-5.9 ± 1.7^a

I-V and F-V data are from the number of experiments indicated in column "n". Parameters are given as mean \pm SEM and were obtained by fitting each myotube within a group to the appropriate equation (I-V, Eq. 2 and F-V, Eq. 3). The average cell capacitance for each group was (in pF): 487 ± 29 , 397 ± 22 , and 439 ± 42 for RyR1, L3624D, and W3620A, respectively. The average series resistance (R_s , M Ω) was: 0.9 ± 0.1 , 0.9 ± 0.1 , and 0.8 ± 0.1 for RyR1, L3624D, and W3620A, respectively. The average V_{error} ($R_s \times I_{\text{peak}}$; mV) was: 3.2 ± 0.4 , 3.1 ± 0.3 , and 4.0 ± 0.4 for RyR1, L3624D, and W3620A, respectively. ^aP < 0.01 compared to RyR1.

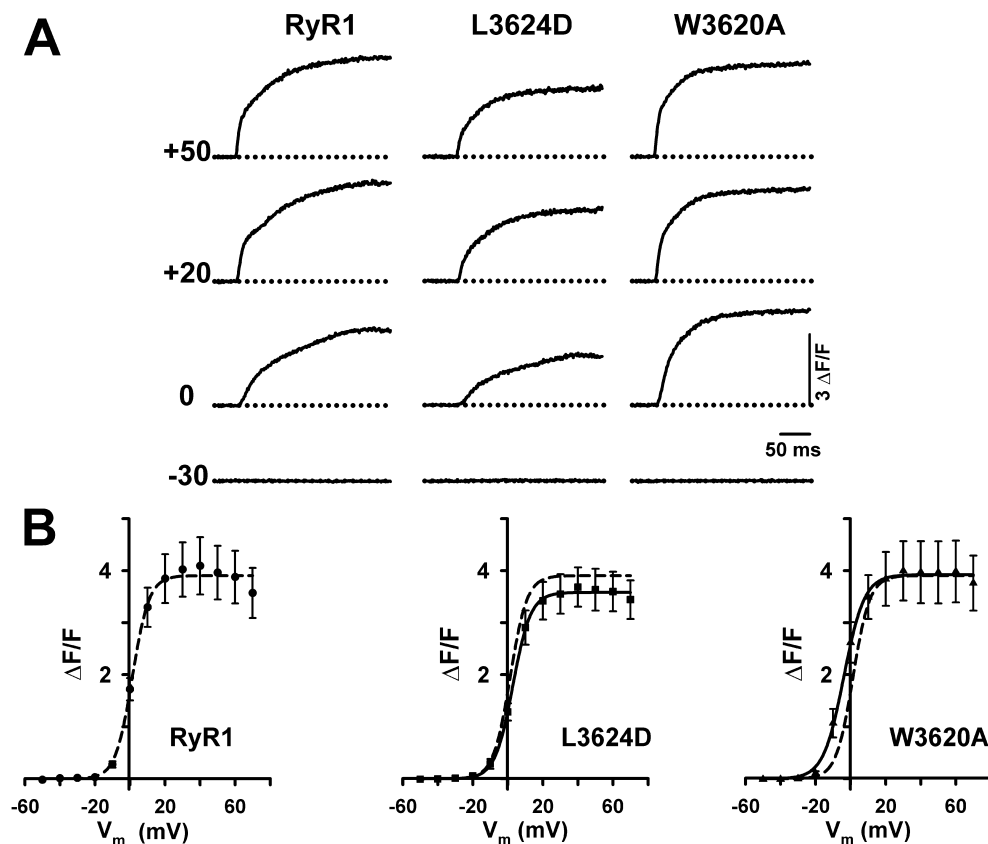


FIGURE 5. CaM binding-deficient RyR1 mutants restore voltage-gated Ca^{2+} release (orthograde coupling) after expression in dyspedic myotubes. (A) Ca^{2+} transients elicited by 200 ms depolarization to the indicated potentials for representative RyR1- (left), L3624D- (middle), and W3620A-expressing (right) myotubes. (B) Average peak F-V relationship for RyR1- (left), L3624D- (middle), and W3620A-expressing myotubes. The lines through the data represent Boltzmann fits to the average data using Eq. 3. For L3624D and W3620A, a dashed line representing the fit of the RyR1 data is also shown for comparison.

Fig. 5 shows that disruption of CaM binding to RyR1 does not alter the magnitude or voltage dependence of orthograde coupling. Myotubes expressing L3624D displayed Ca^{2+} transients that had a peak fluorescence and voltage dependence not significantly different from that of RyR1 (RyR1: $\Delta F/F_{\text{max}} = 4.0 \pm 0.5$, $V_{F1/2} = 0.1 \pm 1.1$; L3624D: $\Delta F/F_{\text{max}} = 3.6 \pm 0.4$, $V_{F1/2} = 1.6 \pm 1.4$). W3620A-expressing myotubes also had Ca^{2+} transients of similar magnitude as RyR1-expressing myotubes ($\Delta F/F_{\text{max}} = 3.9 \pm 0.6$, $V_{F1/2} = -5.9 \pm 1.7$), although the voltage dependence of these transients was shifted to approximately the same degree as that observed for L-channel conductance (~ 6 mV). Together, the results of Figs. 4 and 5 indicate that CaM binding to RyR1 is not required for the targeting or assembly of functional RyR1 ion channels, their activation by the DHPR/voltage sensor, or RyR1-mediated enhancement of DHPR Ca^{2+} channel activity.

DISCUSSION

Evidence has accumulated over the past two decades that calmodulin is a potent modulator of RyR1 activity as assessed using a variety of in vitro approaches. Early studies indicated that the Ca^{2+} -bound form of calmodulin (CaCaM) inhibits RyR1 in the absence of ATP, which

suggested inhibition via a direct interaction rather than through phosphorylation (Meissner, 1986; Smith et al., 1989). More recent [^3H]ryanodine and single channel measurements indicate that at low free Ca^{2+} concentrations ($<1 \mu\text{M}$), apoCaM has a stimulatory effect on RyR1 channel activity (Tripathy et al., 1995; Fruen et al., 2000; Rodney et al., 2000). Binding studies show that apoCaM and CaCaM exert their opposite effects on RyR1 activity by binding to and dissociating from RyR1 on a time scale of seconds to minutes (Moore et al., 1999; Yamaguchi et al., 2001). It is therefore likely that CaM is constitutively bound to the receptor.

In the present study, the role of CaM binding to a specific domain of RyR1 (3614–3643) in modulating EC coupling in intact skeletal myotubes was examined. Given the extensive biochemical evidence that CaM is a potent modulator of RyR1 activity, a surprising finding was that expression of L3624D or W3620A in dyspedic myotubes restored EC coupling to an extent nearly indistinguishable from that of wild-type RyR1. Both L3624D and W3620A appeared to form functional release channels that are correctly targeted to the junction, based on their ability to restore spontaneous action potential-evoked Ca^{2+} release, 4-cmc responsiveness, and both orthograde and retrograde coupling with the DHPR.

Effect of L3624D and W3620A on Ligand Activation of RyR1

The most prominent effect of disrupting the RyR1–CaM interaction in our experiments was an altered caffeine response of a subpopulation of L3624D-expressing myotubes. There are several possible explanations for the attenuated caffeine response. First, those cells that showed an attenuated response to caffeine may have failed to express a sufficient number of functional mutant SR Ca²⁺ release channels. However, our data argue strongly against this explanation. First, low-resting Ca²⁺ levels of dyspedic myotubes were significantly elevated in L3624D-expressing myotubes that showed an attenuated response to caffeine, indicating that these myotubes express functional release channels. Second, spontaneous and electrically evoked global Ca²⁺ release transients were observed in weakly caffeine-responsive L3624D-expressing myotubes. Due to their extremely rapid activation (<10 ms), these spontaneous and evoked transients clearly represent functional DHPR-RyR1 orthograde coupling. It is unlikely that low endogenous RyR3 levels play a significant role in initiating these Ca²⁺ release events since RyR3 cannot substitute for RyR1 in EC coupling (Fessenden et al., 2000). Third, if >40% of myotubes injected with L3624D cDNA resulted in the expression of nonfunctional channels, we would have expected this to have also been reflected in patch-clamp experiments. However, all L3624D-expressing myotubes exhibited large voltage-gated L-currents and SR Ca²⁺ release in our patch clamp experiments. Finally, SR Ca²⁺ release triggered by 4-chloro-m-cresol was similar for both RyR1-expressing myotubes and weakly caffeine-responsive L3624D-expressing myotubes.

Caffeine and 4-cmc act at distinct sites in RyR1 (Fessenden et al., 2002), which may explain the discordance between caffeine and 4-cmc responsiveness of L3624D-expressing myotubes. Although its precise mechanism of action in intact cells is unclear, caffeine augments activation of RyR1 by apoCaM (Balshaw et al., 2001). Therefore, caffeine may be unable to sufficiently activate L3624D mutant release channels in myotubes since the L3624D mutation abolishes apoCaM binding to RyR1 (Yamaguchi et al., 2001). Caffeine activation of SR Ca²⁺ release in a subpopulation of L3624D-expressing myotubes could be explained by the presence of higher levels of RyR3 in these myotubes, and that Ca²⁺ release from RyR3 may serve to facilitate activation of L3624D channels even in the absence of apoCaM binding. On the other hand, activation by 4-cmc may not be dependent on the binding of apoCaM to RyR1, as it likely acts via a different mechanism (Fessenden et al., 2000). This hypothesis could be tested in future experiments by evaluating the ability of caffeine to activate SR Ca²⁺ release after expression

L3624D mutant release channels in RyR1/RyR3 double knockout myotubes.

CaM Binding to the 3614–3643 Region of RyR1 Is not Required for Bidirectional DHPR/RyR1 Signaling

Given the postulated role of apoCaM to activate and CaCaM to inhibit Ca²⁺ release through RyR1, it might have been expected that disruption of both apoCaM and CaCaM (L3624D) or only CaCaM (W3620A) binding to RyR1 would significantly affect voltage-gated Ca²⁺ release during EC coupling. Morphological evidence from freeze-fracture studies has suggested that in junctional SR, only every other release channel is associated with a tetrad of DHPRs (Block et al., 1988), raising the question of how “uncoupled” release channels are activated and inactivated. One hypothesis is that Ca²⁺ released from the mechanically coupled ryanodine receptors activates and inactivates adjacent, uncoupled release channels. In such a scenario, CaM may act to fine-tune the activation of uncoupled release channels by increasing (apoCaM) and lowering (CaCaM) their intrinsic Ca²⁺ sensitivity. However, maximal SR Ca²⁺ release in response to depolarization was unaffected by either mutation and in L3624D-expressing myotubes the voltage dependence of Ca²⁺ release was identical to that of RyR1. Additionally, no significant difference was seen in either the $t_{1/2}$ (time to 50%) of Ca²⁺ transient activation in voltage-clamp experiments ($t_{1/2}$ at +50 mV was 24.1 ± 1.9 ms, 22.1 ± 1.8 ms, and 26.8 ± 2.4 ms for RyR1-, W3620A-, and L3624D-expressing myotubes, respectively) or the $t_{1/2}$ of decay of spontaneous Ca²⁺ transients measured in intact Indo-1-loaded myotubes ($t_{1/2}$ was 0.11 ± 0.06 s, 0.11 ± 0.02 s, and 0.09 ± 0.01 s for RyR1-, W3620A-, and L3624D-expressing myotubes, respectively). Thus, apoCaM and CaCaM appear to impart little, if any, impact on SR Ca²⁺ release triggered by the voltage sensor.

Interestingly, expression of W3620A caused a significant increase in maximal L-channel conductance (see Table I). In fact, this increase in L-channel conductance likely represents an underestimation of the actual effect of the W3620A mutation because many of the W3620A-expressing myotubes patch clamped during the course of our experiments had to be excluded from the final analysis due to the presence of excessively large L-currents that resulted in significant compromise of the voltage clamp. Since the estimated voltage error due to series resistance, after compensation, for the myotubes used in Fig. 5 was only slightly larger for W3620A-expressing myotubes (see legend to Table I), the increase in L-channel conductance of W3620A-expressing myotubes may only partially account for the small (~6 mV) hyperpolarizing shift in $V_{G1/2}$ and $V_{F1/2}$ values observed in these experiments. There are several possible mechanisms to explain the increased conduc-

tance through L-channels in W3620A-expressing dyspedic myotubes. The W3620A mutation in RyR1 may promote DHPR subunit synthesis and/or membrane insertion, thus resulting in an increase in L-channel surface expression. Alternatively, a conformational change in RyR1 caused by the W3620A mutation could alter the efficiency of retrograde coupling between RyR1 and DHPR. In any event, the increase in L-channel activity is apparently specific for the W3620A mutation, since L-currents from L3624D-expressing myotubes were identical to that of RyR1.

The results presented here do not entirely exclude a role for CaM in SR Ca²⁺ release during skeletal muscle EC coupling. First of all, CaM regulation of RyR1 may have long-term or more subtle effects that are not detected under the experimental conditions used here. Furthermore, we used single amino acid mutations to disrupt RyR1–CaM interaction that eliminate high-affinity [³⁵S]CaM binding in *in vitro* assays (Yamaguchi et al., 2001). While these mutations were effective in those assays, it is possible that because of interactions with the DHPR and/or other accessory proteins, the mutant release channels adopt a conformation that permits CaM binding when expressed within junctions of intact muscle cells. Another, however unlikely, possibility is that native RyR1 interactions with other cellular protein(s) unmask a CaM binding site that is not detected in *in vitro* assays. In addition, although EC coupling in cultured myotubes is widely used as a model for skeletal muscle EC coupling, it is possible that CaM–RyR1 interactions are developmentally regulated such that CaM–RyR1 binding is more prevalent in mature skeletal muscle. Finally, although the experiments in Fig. 3 A indicate that voltage-gated SR Ca²⁺ release elicited by low frequency (0.5 Hz) repetitive stimulation is similar for RyR1 and the CaM binding-deficient mutants, it will be important for future experiments to determine whether CaM modulates Ca²⁺ release during rapid or tetanic stimulation.

In conclusion, our results illustrate the importance of studying the function of EC coupling proteins operating within an intact muscle cell environment. Voltage-dependent conformational changes in the DHPR/L-type Ca²⁺ channel, and not Ca²⁺ or ligand activation paradigms, are the physiologically relevant trigger for skeletal muscle EC coupling. Although biochemical studies provide valuable insights into the function of proteins of EC coupling, their impact on bidirectional DHPR–RyR1 functional coupling have yet to be readily reconstituted in any heterologous expression system. Our results indicate that under the experimental conditions used here, the control of RyR1 gating by the skeletal muscle voltage sensor is stronger than any possible modulatory effects of CaM.

We would like to thank Drs. Kurt G. Beam and Paul D. Allen for providing access to the dyspedic mice used in this study and to Linda Groom for excellent technical assistance.

This work was supported by grants from the National Institutes of Health (AR44657 to R.T. Dirksen, AR18687 to G. Meissner, and DA07232 to K.M.S. O'Connell), and an American Heart Association Grant-in-Aid (to R.T. Dirksen).

Submitted: 24 April 2002

Revised: 21 June 2002

Accepted: 24 June 2002

REFERENCES

- Armstrong, C.M., F.M. Bezanilla, and P. Horowicz. 1972. Twitches in the presence of ethylene glycol bis-(aminoethyl ether)-N,N'-tetracetic acid. *Biochim. Biophys. Acta.* 267:605–608.
- Avila, G., and R.T. Dirksen. 2000. Functional impact of the ryanodine receptor on the skeletal muscle L-type Ca²⁺ channel. *J. Gen. Physiol.* 115:467–480.
- Avila, G., and R.T. Dirksen. 2001. Functional effects of central core disease mutations in the cytoplasmic region of the skeletal muscle ryanodine receptor. *J. Gen. Physiol.* 118:277–290.
- Avila, G., J.J. O'Brien, and R.T. Dirksen. 2001. Excitation-contraction uncoupling by a human central core disease mutation in the ryanodine receptor. *Proc. Natl. Acad. Sci. USA.* 98:4215–4220.
- Balshaw, D.M., L. Xu, N. Yamaguchi, D.A. Pasek, and G. Meissner. 2001. Calmodulin binding and inhibition of cardiac muscle calcium release channel (ryanodine receptor). *J. Biol. Chem.* 276:20144–20153.
- Beurg, M., C.A. Ahern, P. Vallejo, M.W. Conklin, P.A. Powers, R.G. Gregg, and R. Coronado. 1999. Involvement of the carboxy-terminus region of the dihydropyridine receptor beta1a subunit in excitation-contraction coupling of skeletal muscle. *Biophys. J.* 77:2953–2967.
- Block, B.A., T. Imagawa, K.P. Campbell, and C. Franzini-Armstrong. 1988. Structural evidence for direct interaction between the molecular components of the transverse tubule/sarcoplasmic reticulum junction in skeletal muscle. *J. Cell Biol.* 107:2587–2600.
- Brillantes, A.B., K. Ondrias, A. Scott, E. Kobrinsky, E. Ondriasova, M.C. Moschella, T. Jayaraman, M. Landers, B.E. Ehrlich, and A.R. Marks. 1994. Stabilization of calcium release channel (ryanodine receptor) function by FK506-binding protein. *Cell.* 77:513–523.
- Fessenden, J.D., C.F. Perez, I.N. Pessah, and P.D. Allen. 2002. Localization of key determinants on the ryanodine receptor type 1 (RyR1) required for activation by 4-chloro-m-cresol. *Biophys. J.* 82:83A.
- Fessenden, J.D., Y. Wang, R.A. Moore, S.R. Chen, P.D. Allen, and I.N. Pessah. 2000. Divergent functional properties of ryanodine receptor types 1 and 3 expressed in a myogenic cell line. *Biophys. J.* 79:2509–2525.
- Fruen, B.R., J.M. Bardy, T.M. Byrem, G.M. Strasburg, and C.F. Louis. 2000. Differential Ca²⁺ sensitivity of skeletal and cardiac muscle ryanodine receptors in the presence of calmodulin. *Am. J. Physiol. Cell Physiol.* 279:C724–C733.
- Grabner, M., R.T. Dirksen, N. Suda, and K.G. Beam. 1999. The II-III loop of the skeletal muscle dihydropyridine receptor is responsible for the Bi-directional coupling with the ryanodine receptor. *J. Biol. Chem.* 274:21913–21919.
- Jayaraman, T., A.M. Brillantes, A.P. Timerman, S. Fleischer, H. Erdjument-Bromage, P. Tempst, and A.R. Marks. 1992. FK506 binding protein associated with the calcium release channel (ryanodine receptor). *J. Biol. Chem.* 267:9474–9477.
- Jurado, L.A., P.S. Chockalingam, and H.W. Jarrett. 1999. Apocalmodulin. *Physiol. Rev.* 79:661–682.
- MacKrell, J.J. 1999. Protein-protein interactions in intracellular

- Ca²⁺-release channel function. *Biochem. J.* 337:345–361.
- Meissner, G. 1986. Ryanodine activation and inhibition of the Ca²⁺ release channel of sarcoplasmic reticulum. *J. Biol. Chem.* 261: 6300–6306.
- Moore, C.P., G. Rodney, J.Z. Zhang, L. Santacruz-Toloza, G. Strasburg, and S.L. Hamilton. 1999. Apocalmodulin and Ca²⁺ calmodulin bind to the same region on the skeletal muscle Ca²⁺ release channel. *Biochemistry.* 38:8532–8537.
- Nabauer, M., G. Callewaert, L. Cleemann, and M. Morad. 1989. Regulation of calcium release is gated by calcium current, not gating charge, in cardiac myocytes. *Science.* 244:800–803.
- Nakai, J., R.T. Dirksen, H.T. Nguyen, I.N. Pessah, K.G. Beam, and P.D. Allen. 1996. Enhanced dihydropyridine receptor channel activity in the presence of ryanodine receptor. *Nature.* 380:72–75.
- Nakai, J., N. Sekiguchi, T.A. Rando, P.D. Allen, and K.G. Beam. 1998. Two regions of the ryanodine receptor involved in coupling with L-type Ca²⁺ channels. *J. Biol. Chem.* 273:13403–13406.
- Pate, P., J. Mochca-Morales, Y. Wu, J.Z. Zhang, G.G. Rodney, I.I. Serysheva, B.Y. Williams, M.E. Anderson, and S.L. Hamilton. 2000. Determinants for calmodulin binding on voltage-dependent Ca²⁺ channels. *J. Biol. Chem.* 275:39786–39792.
- Rodney, G.G., B.Y. Williams, G.M. Strasburg, K. Beckingham, and S.L. Hamilton. 2000. Regulation of RYR1 activity by Ca²⁺ and calmodulin. *Biochemistry.* 39:7807–7812.
- Saimi, Y., and C. Kung. 2002. Calmodulin as an ion channel subunit. *Annu. Rev. Physiol.* 64:289–311.
- Samso, M., and T. Wagenknecht. 2002. Apocalmodulin and Ca²⁺-calmodulin bind to neighboring locations on the ryanodine receptor. *J. Biol. Chem.* 277:1349–1353.
- Sencer, S., R.V. Papineni, D.B. Halling, P. Pate, J. Krol, J.Z. Zhang, and S.L. Hamilton. 2001. Coupling of RYR1 and L-type calcium channels via calmodulin binding domains. *J. Biol. Chem.* 276: 38237–38241.
- Smith, J.S., E. Rousseau, and G. Meissner. 1989. Calmodulin modulation of single sarcoplasmic reticulum Ca²⁺-release channels from cardiac and skeletal muscle. *Circ. Res.* 64:352–359.
- Takeshima, H., M. Iino, H. Takekura, M. Nishi, J. Kuno, O. Minowa, H. Takano, and T. Noda. 1994. Excitation-contraction uncoupling and muscular degeneration in mice lacking functional skeletal muscle ryanodine-receptor gene. *Nature.* 369:556–559.
- Tanabe, T., K.G. Beam, B.A. Adams, T. Niidome, and S. Numa. 1990. Regions of the skeletal muscle dihydropyridine receptor critical for excitation-contraction coupling. *Nature.* 346:567–569.
- Tripathy, A., L. Xu, G. Mann, and G. Meissner. 1995. Calmodulin activation and inhibition of skeletal muscle Ca²⁺ release channel (ryanodine receptor). *Biophys. J.* 69:106–119.
- Yamaguchi, N., C. Xin, and G. Meissner. 2001. Identification of apocalmodulin and Ca²⁺-calmodulin regulatory domain in skeletal muscle Ca²⁺ release channel, ryanodine receptor. *J. Biol. Chem.* 276:22579–22585.