

Hypothesis

Does gamma-aminobutyric acid (GABA) influence the development of chronic inflammation in rheumatoid arthritis?

James M Kelley, Laura B Hughes and S Louis Bridges Jr*

Address: Division of Clinical Immunology and Rheumatology, Department of Medicine, University of Alabama at Birmingham, Birmingham, Alabama, USA

Email: James M Kelley - jmkelley@uab.edu; Laura B Hughes - lhughes@uab.edu; S Louis Bridges* - lbridges@uab.edu

* Corresponding author

Published: 3 January 2008

Received: 28 October 2007

Journal of Neuroinflammation 2008, **5**:1 doi:10.1186/1742-2094-5-1

Accepted: 3 January 2008

This article is available from: <http://www.jneuroinflammation.com/content/5/1/1>

© 2008 Kelley et al; licensee BioMed Central Ltd.

This is an Open Access article distributed under the terms of the Creative Commons Attribution License (<http://creativecommons.org/licenses/by/2.0>), which permits unrestricted use, distribution, and reproduction in any medium, provided the original work is properly cited.

Abstract

Background: Recent studies have demonstrated a role for spinal p38 MAP kinase (MAPK) in the development of chronic inflammation and peripheral arthritis and a role for GABA in the inhibition of p38 MAPK mediated effects. Integrating these data suggests that GABA may play a role in downregulating mechanisms that lead to the production of proinflammatory agents such as interleukin-1, interleukin-6, and matrix metalloproteinase 3 – agents implicated in the pathogenesis of rheumatoid arthritis (RA). Genetic studies have also associated RA with members of the p38 MAPK pathway.

Hypothesis: We propose a hypothesis for an inefficient GABA signaling system that results in unchecked proinflammatory cytokine production via the p38 MAPK pathway. This model also supports the need for increasing research in the integration of immunology and neuroscience.

Background

The impact of an immune response on the nervous system has long been apparent, with multiple sclerosis (MS), myasthenia gravis (MG), and neuropsychiatric manifestations of systemic lupus erythematosus serving as examples. While neuroendocrine modulation of the immune system has been appreciated, the influence of the nervous system on immune responses is not well understood. The complex characters of a coordinated immune response and the nervous/endocrine (electrical/chemical) communication systems of the body complicate research in this area; however, relationships between the nervous and immune systems are essential for proper function. Any entity would be compromised if its defense and communication systems did not interact – humans are no exception.

Rheumatoid arthritis (RA) is a common systemic inflammatory condition leading to symmetric, chronic synovial inflammation, erosions, and joint destruction in some patients. Its etiology is unclear but may result from an environmental trigger in the context of genetic predisposition. There is literature precedent for neuroendocrine involvement in RA pathogenesis [1] including suggestions of neurotransmitters such as norepinephrine impacting RA [2] and suggesting a role for the hypothalamic-pituitary-adrenal axis in inflammation [3].

A recent article reported that inhibiting spinal cord p38 MAP kinase (MAPK) reduced joint inflammation in the rat model of RA by an unknown mechanism [4]. Somatic afferent pain signals received in the spinal cord result in stress-induced kinase release, causing efferent signals that direct mediators of inflammatory response. Spinal p38 MAPK

inhibition lowered levels of the pro-inflammatory mediators, interleukin 1 (IL-1), interleukin 6 (IL-6), and matrix metalloproteinase 3 (MMP3), in the periphery, thereby linking the central nervous system (CNS) with peripheral immune responses [4]. IL-1 also functions as a neuroendocrine modulator in animal models of RA [5], as a cytokine contributing to joint destruction [6], and as a product of pain facilitation responses of spinal cord glial cells [7].

Proinflammatory cytokine production via p38 MAPK appears to be dependent on tumor necrosis factor- α (TNF- α) since administration of etanercept (TNF inhibitor) blocks proinflammatory effects in rats [4]. If spinal administration of a TNF inhibitor is effective in reducing inflammatory disease with less systemic side-effects [8], it may be an appropriate, albeit more cumbersome, delivery method for this class of treatment.

p38 MAPK is an important intermediate in prostaglandin release. Prostaglandins can modulate an inflammatory response and sensitize neurons to pain. Activation of spinal N-methyl-D-aspartic acid (NMDA) receptors results in release of prostaglandins and mediators of thermal hyperalgesia. p38 MAPK inhibition downregulates this process [9], providing another example of immune regulation by neuronal p38 MAPK. p38 MAPK is encoded by *MAPK14* on Chromosome 6p21.3. Its alpha and gamma isoforms are implicated in pathways leading to chronic inflammation [10]. p38 MAPK activates and interacts with immunomodulators such as signal transducer and activator of transcription 4 (*STAT4*), which has been recently associated with susceptibility to RA [11], other map kinase molecules (such as ERKs and MKKs), and NF κ B. p38 MAPK, TNF, NF κ B, and *STAT4* are potential pharmacological targets; therefore, research is intensifying to detect subtleties of this pathway on inflammatory disease. One subtlety that should be examined in this research is determining if neurotransmitters participate in RA pathogenesis.

Hypothesis

We propose a model in which gamma-aminobutyric acid (GABA), the primary inhibitory neurotransmitter of the CNS, may downregulate p38 MAPK activity to reduce peripheral production of proinflammatory cytokines in joints affected by RA.

Afferent pain signals contribute to the CNS propagating an inflammatory response that may influence the development of peripheral arthritis [4]. Crosstalk between the immune and nervous systems can inhibit p38 MAPK and may downregulate a chronic inflammatory response. GABA prevents release of IL-6 by inhibiting p38 MAPK in rat glioma cells [12]. While the effects of GABA signaling on release of other proinflammatory cytokines such as

IL-1 and TNF- α have not been examined, IL-1 is known to impact GABA function [13].

GABA may reduce inflammation, or, conversely, deficient GABA function may contribute to uncontrolled inflammation. Such deficient function could likely occur at a specific GABA receptor. GABA $_B$ receptors are metabotropic and produce prolonged inhibitory signals, which make a more likely candidate for impacting a chronic inflammatory response. They differ from ionotropic GABA receptors that utilize fast synaptic transmission. The GABA $_B$ receptor is a heterodimer with subunits encoded by *GABBR1* and *GABBR2*. *GABBR1* is encoded in the Major Histocompatibility Complex (MHC) extended class I region (6p21.3) [14], an area of the MHC associated with MS, MG, Alzheimer's disease, schizophrenia, narcolepsy, epilepsy, and RA. While specific *HLA-DRB1* alleles (MHC class II) contribute strongly to RA susceptibility, possibly due to their role in presenting arthritogenic peptides, *GABBR1* polymorphisms are not in linkage disequilibrium with these alleles (within publicly available HapMap data) as is expected given the 3 Mb distance between the two loci. Thus, observed genetic association to this region suggests a potentially independent role for *GABBR1* in genetic susceptibility to RA. *GABBR1* polymorphisms have not been experimentally characterized in RA patients but computational analyses suggest that some may influence alternative splicing [15] or protein structure [16]. *GABBR1* encodes multiple isoforms and missense mutations [17] that are implicated in other disease processes [18] further supporting this possibility.

Since *GABBR1* and *MAPK14* are both encoded on 6p21.3, their expression may be regulated together, which is common for functionally related genes in or near the MHC [19,20]. Since GABA, which may downregulate inflammation, requires a receptor to signal, a *GABBR1* polymorphism may impair downstream inhibition of p38 MAPK. Other molecules are known to influence p38 MAPK function in an arthritic state, including map kinase family members (such as ERK1/2) and NF κ B [21], and likely also participate in these complex interactions of RA pathogenesis.

Within that complex system, we propose a potential mechanism that may contribute to chronic inflammation in RA (Figure 1). A.) When synovial destruction begins, afferent somatic fibers carry nociceptive impulses to the spinal cord. B.) In the spinal cord, these pain and/or cytokine signals activate p38 MAPK. C.) Spinal p38 MAPK which then interacts with *STAT4* or other molecules to induce signals that upregulate additional proinflammatory cytokine release such as IL-1, IL-6, or MMP3 in the periphery [4,7]. (While the link between spinal cord receptor signaling and peripheral immune responses is not fully understood, there is precedent for such

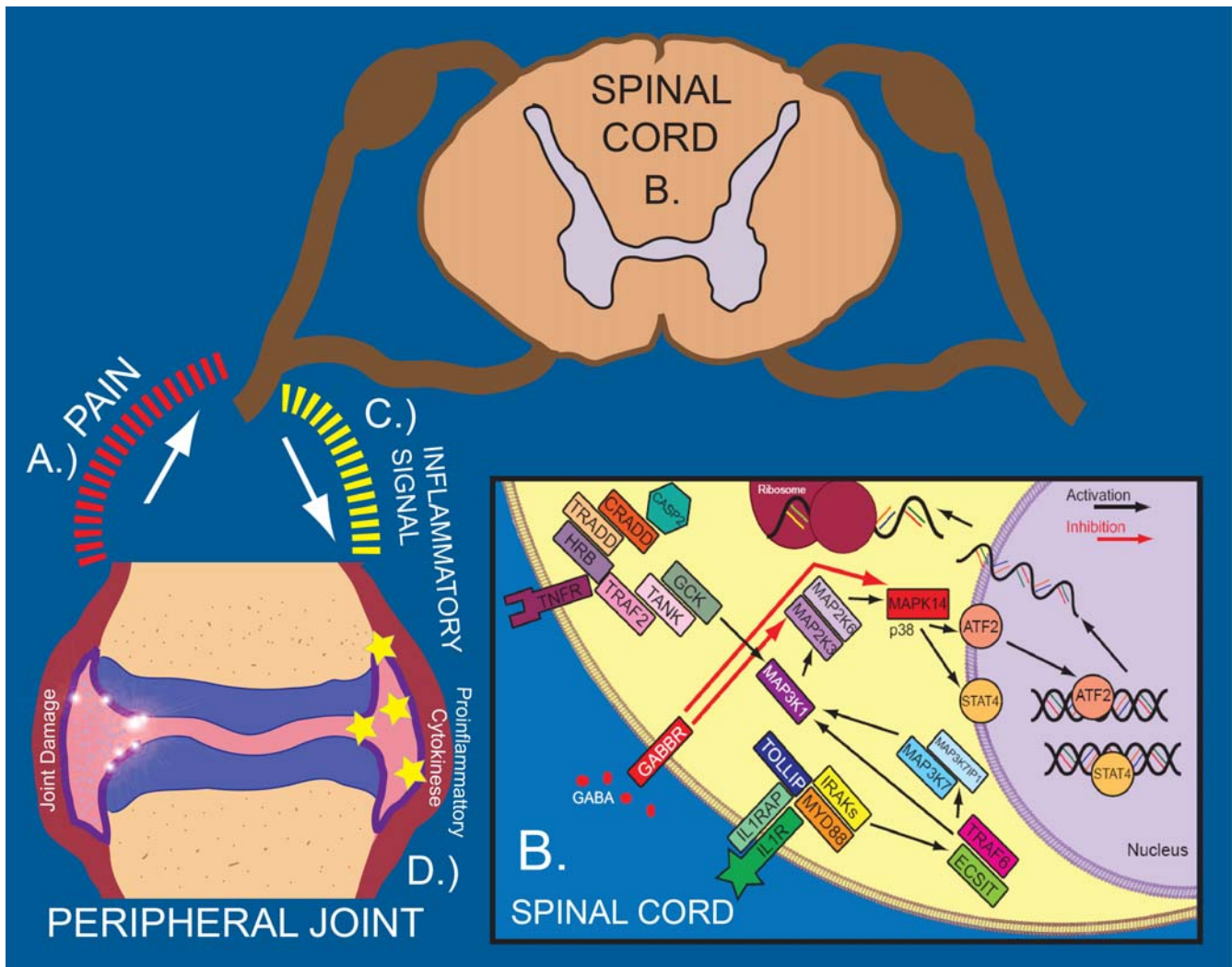


Figure 1
Possible influence of GABA on p38 MAPK pathway in rheumatoid arthritis. This figure illustrates a possible model for how GABA can inhibit the production of proinflammatory cytokines. All molecules are listed by their official gene name.

relationships [22]. For example, inhibited p38 MAPK signaling in the spinal cord can trigger acetylcholine release in the periphery [23].) D.) These proinflammatory molecules produce additional joint destruction and excessive immune response.

There are mechanisms that can negatively regulate this pathway. An inhibitory signal to the spinal cord (ex. GABA) may downregulate p38 MAPK and limit proinflammatory cytokine production [12]. This could reduce an exacerbation of RA resulting from additional proinflammatory cytokines. Any variation affecting this negative regulation, such as a SNP allele or haplotype in *GABBR1*, may allow p38 MAPK to proceed unchecked and worsen RA.

Recent genetic evidence and functional studies in animals suggest a neurological component to RA pathogenesis and need for additional study. More insight into RA pathogenesis could also improve understanding of neurological conditions. Proinflammatory cytokines, which exacerbate synovial damage in RA, are present in excessive levels in neurodegenerative diseases [24]. Understanding this excess cytokine production in RA, or in neurodegeneration, may assist research and ultimately treatment for the other condition. One of these excessive proinflammatory cytokines, IL-6, is implicated in improper beta-amyloid processing during Alzheimer's disease (AD) due to its effects on alpha-2-macroglobulin (A2M) [25]. A2M is a protease inhibitor that clears beta-amyloid components; when not functioning properly, plaques accumulate

contributing to AD [26]. A2M is also a cytokine transporter that is overly consumed in synovial fluid of RA patients [27], causing an accumulation of materials (cytokines) and contributing to disease. These two pathogenic mechanisms use the same molecule (A2M) in a similar manner (resulting in accumulation of materials): studying the mechanism in one disease may help understanding pathogenesis of the other disease.

Implications

In summary, inhibition of p38 MAPK can limit joint inflammation [4], and GABA can reduce p38 MAPK signaling [12]. However, no direct link has been reported between GABA and joint inflammation. We hypothesize that GABA may influence RA pathogenesis via the p38 MAPK pathway as depicted in Figure 1.

One difficulty in establishing these links (i.e. relating GABA to immune system physiology) is assembling the resources and expertise needed to evaluate a neuroimmunological question. While many researchers are focused on neuroscience or immunology, few laboratories have the experience to combine an understanding of neuronal/glial molecular pathways and rheumatic/autoimmune diseases. Furthermore, researchers in these areas do not frequently collaborate. We would encourage additional work on the role of spinal cord receptor signaling on the development of RA, and we hope that suggesting a role for GABA in the development of RA will not only encourage the further integration of basic immunology into clinical neuroscience but encourage the incorporation of basic neuroscience into clinical immunology.

Competing interests

The author(s) declare that they have no competing interests.

Authors' contributions

JMK, LBH, and SLB prepared, read, and approved the final manuscript.

References

- Eskandari F, Webster JI, Sternberg EM: **Neural immune pathways and their connection to inflammatory diseases.** *Arthritis Res Ther* 2003, **5**:251-265.
- Cutolo M, Straub RH: **Stress as a risk factor in the pathogenesis of rheumatoid arthritis.** *Neuroimmunomodulation* 2006, **13**:277-282.
- Sternberg EM, Silverman MN, Cizza G: **The neuroendocrine system and rheumatoid arthritis: insights from anti-tumor necrosis factor- α therapy.** *J Rheumatol* 2007, **34**:1443-1445.
- Boyle DL, Jones TL, Hammaker D, Svensson CI, Rosengren S, Albani S, Sorkin L, Firestein GS: **Regulation of peripheral inflammation by spinal p38 MAP kinase in rats.** *PLoS Med* 2006, **3**:e338.
- Horai R, Asano M, Sudo K, Kanuka H, Suzuki M, Nishihara M, Takahashi M, Iwakura Y: **Production of mice deficient in genes for interleukin (IL)-1 α , IL-1 β , IL-1 α/β , and IL-1 receptor antagonist shows that IL-1 β is crucial in turpentine-induced fever development and glucocorticoid secretion.** *J Exp Med* 1998, **187**:1463-1475.
- Zwerina J, Redlich K, Polzer K, Joosten L, Kronke G, Distler J, Hess A, Pundt N, Pap T, Hoffmann O, et al.: **TNF-induced structural joint damage is mediated by IL-1.** *Proc Natl Acad Sci USA* 2007, **104**:11742-11747.
- Watkins LR, Maier SF: **Glia: a novel drug discovery target for clinical pain.** *Nat Rev Drug Discov* 2003, **2**:973-985.
- Sweeney SE, Firestein GS: **Mitogen activated protein kinase inhibitors: where are we now and where are we going?** *Ann Rheum Dis* 2006, **65**(Suppl 3):iii83-88.
- Svensson CI, Hua XY, Protter AA, Powell HC, Yaksh TL: **Spinal p38 MAP kinase is necessary for NMDA-induced spinal PGE(2) release and thermal hyperalgesia.** *Neuroreport* 2003, **14**:1153-1157.
- Korb A, Tohidast-Akrad M, Cetin E, Axmann R, Smolen J, Schett G: **Differential tissue expression and activation of p38 MAPK α , β , γ , and δ isoforms in rheumatoid arthritis.** *Arthritis Rheum* 2006, **54**:2745-2756.
- Remmers EF, Plenge RM, Lee AT, Graham RR, Hom G, Behrens TW, De Bakker PI, Le JM, Lee HM, Batliwalla F, et al.: **STAT4 and the Risk of Rheumatoid Arthritis and Systemic Lupus Erythematosus.** *New Eng J Med* 2007, **357**:977-986.
- Spangelo BL, Horrell S, Goodwin AL, Shroff S, Jarvis WD: **Somato- statin and gamma-aminobutyric acid inhibit interleukin-1 beta-stimulated release of interleukin-6 from rat C6 glioma cells.** *Neuroimmunomodulation* 2004, **11**:332-340.
- Brambilla D, Franciosi S, Opp MR, Imeri L: **Interleukin-1 inhibits firing of serotonergic neurons in the dorsal raphe nucleus and enhances GABAergic inhibitory post-synaptic potentials.** *Eur J Neurosci* 2007, **26**:1862-1869.
- Horton R, Wilming L, Rand V, Lovering RC, Bruford EA, Khodiyar VK, Lush MJ, Povey S, Talbot CC Jr, Wright MW, et al.: **Gene map of the extended human MHC.** *Nat Rev Genet* 2004, **5**:889-899.
- Brunak S, Engelbrecht J, Knudsen S: **Prediction of human mRNA donor and acceptor sites from the DNA sequence.** *J Mol Biol* 1991, **220**:49-65.
- Ng PC, Henikoff S: **Accounting for human polymorphisms predicted to affect protein function.** *Genome Res* 2002, **12**:436-446.
- Hisama FM, Gruen JR, Choi J, Huseinovic M, Grigorenko EL, Pauls D, Mattson RH, Gelernter J, Wood FB, Goei VL: **Human GABA(B) receptor 1 gene: eight novel sequence variants.** *Hum Mutat* 2001, **17**:349-350.
- Zai G, Arnold P, Burroughs E, Barr CL, Richter MA, Kennedy JL: **Evidence for the gamma-amino-butyric acid type B receptor 1 (GABBR1) gene as a susceptibility factor in obsessive-compulsive disorder.** *Am J Med Genet B Neuropsychiatr Genet* 2005, **134**:25-29.
- Chiaromonte F, Miller W, Bouhassira EE: **Gene length and proximity to neighbors affect genome-wide expression levels.** *Genome Res* 2003, **13**:2602-2608.
- Trowsdale J: **The gentle art of gene arrangement: the meaning of gene clusters.** *Genome Biol* 2002, **3**:COMMENT2002.
- Dang PM, Stensballe A, Boussetta T, Raad H, Dewas C, Krowiarski Y, Hayem G, Jensen ON, Gougérot-Pocidallo MA, El-Benna J: **A specific p47phox-serine phosphorylated by convergent MAPKs mediates neutrophil NADPH oxidase priming at inflammatory sites.** *J Clin Invest* 2006, **116**:2033-2043.
- Sorkin LS, Moore J, Boyle DL, Yang L, Firestein GS: **Regulation of peripheral inflammation by spinal adenosine: role of somatic afferent fibers.** *Exp Neurol* 2003, **184**:162-168.
- Waldburger J, Boyle DL, Edgar M, Levine Y, Pavlov V, Ochani M, Tracey K, Firestein GS: **Spinal p39 Map Kinase Regulates Peripheral Anti-Inflammatory Responses via the Vagus Nerve and Cholinergic Responses.** *Arthritis Rheum* 2007, **56**:S385.
- Samland H, Huitron-Resendiz S, Maslah E, Criado J, Henriksen SJ, Campbell IL: **Profound increase in sensitivity to glutamatergic - but not cholinergic agonist-induced seizures in transgenic mice with astrocyte production of IL-6.** *J Neurosci Res* 2003, **73**:176-187.
- Ganter U, Strauss S, Jonas U, Weidemann A, Beyreuther K, Volk B, Berger M, Bauer J: **Alpha 2-macroglobulin synthesis in interleukin-6-stimulated human neuronal (SH-SY5Y neuroblastoma) cells. Potential significance for the processing of Alzheimer beta-amyloid precursor protein.** *FEBS Lett* 1991, **282**:127-131.

26. Blacker D, Wilcox MA, Laird NM, Rodes L, Horvath SM, Go RC, Perry R, Watson B Jr, Bassett SS, McInnis MG, et al: **Alpha-2 macroglobulin is genetically associated with Alzheimer disease.** *Nat Genet* 1998, **19**:357-360.
27. Borth W, Menzel JE: **Association of C1q- and conglutinin-binding immune complexes with high consumption of alpha-2-macroglobulin in synovial fluids of patients with rheumatoid arthritis.** *Int Arch Allergy Appl Immunol* 1984, **75**:92-96.

Publish with **BioMed Central** and every scientist can read your work free of charge

"BioMed Central will be the most significant development for disseminating the results of biomedical research in our lifetime."

Sir Paul Nurse, Cancer Research UK

Your research papers will be:

- available free of charge to the entire biomedical community
- peer reviewed and published immediately upon acceptance
- cited in PubMed and archived on PubMed Central
- yours — you keep the copyright

Submit your manuscript here:
http://www.biomedcentral.com/info/publishing_adv.asp

