

Short report

Open Access

Human endogenous retrovirus-FRD envelope protein (syncytin 2) expression in normal and trisomy 21-affected placenta

André Malassiné^{1,2,5}, Jean-Louis Frendo^{1,2,3,5}, Sandra Blaise⁴,
Karen Handschuh^{1,2}, Pascale Gerbaud^{1,2,5}, Vassilis Tsatsaris^{1,2,5},
Thierry Heidmann^{4,5} and Danièle Evain-Brion*^{1,2,5}

Address: ¹INSERM, U767, 4 avenue de l'Observatoire 75006 Paris, France, ²Université Paris Descartes, Faculté des Sciences Pharmaceutiques et Biologiques, 4 avenue de l'Observatoire, 75006 Paris, France, ³CNRS, Paris, F-75006 France, ⁴Unité des Rétrovirus Endogènes et Eléments Rétroïdes des Eucaryotes Supérieurs UMR 8122 CNRS, Institut Gustave Roussy, 39 rue Camille Desmoulins, 94805 Villejuif, France and ⁵PremUP, Paris, France

Email: André Malassiné - andre.malassine@univ-paris5.fr; Jean-Louis Frendo - jean-louis.frendo@univ-paris5.fr;
Sandra Blaise - s.blaise@afssa.fr; Karen Handschuh - karen.handschuh@univ-paris5.fr; Pascale Gerbaud - pascale.gerbaud@univ-paris5.fr;
Vassilis Tsatsaris - vassilis.tsatsaris@cch.ap-hop-paris.fr; Thierry Heidmann - heidmann@igr.fr; Danièle Evain-Brion* - daniele.evain-brion@univ-paris5.fr

* Corresponding author

Published: 23 January 2008

Received: 3 October 2007

Retrovirology 2008, 5:6 doi:10.1186/1742-4690-5-6

Accepted: 23 January 2008

This article is available from: <http://www.retrovirology.com/content/5/1/6>

© 2008 Malassiné et al; licensee BioMed Central Ltd.

This is an Open Access article distributed under the terms of the Creative Commons Attribution License (<http://creativecommons.org/licenses/by/2.0>), which permits unrestricted use, distribution, and reproduction in any medium, provided the original work is properly cited.

Abstract

Human trophoblast expresses two fusogenic retroviral envelope proteins, the widely studied syncytin 1, encoded by HERV-W and the recently characterized syncytin 2 encoded by HERV-FRD. Here we studied syncytin 2 in normal and Trisomy 21-affected placenta associated with abnormal trophoblast differentiation. Syncytin 2 immunolocalization was restricted throughout normal pregnancy to some villous cytotrophoblastic cells (CT). During the second trimester of pregnancy, syncytin 2 was immunolocalized in some cuboidal CT in T21 placentas, whereas in normal placentas it was observed in flat CT, extending into their cytoplasmic processes. *In vitro*, CT isolated from normal placenta fuse and differentiate into syncytiotrophoblast. At the same time, syncytin 2 transcript levels decreased significantly with syncytiotrophoblast formation. In contrast, CT isolated from T21-affected placentas fused and differentiated poorly and no variation in syncytin 2 transcript levels was observed. Syncytin 2 expression illustrates the abnormal trophoblast differentiation observed in placenta of fetal T21-affected pregnancies.

Background

Human endogenous retroviruses (HERV) comprise approximately 8% of the human genome [1,2]. Most of the identified elements are defective due to mutations and/or deletions within their genes, but some elements have conserved intact open reading frames. A systematic search for non-defective endogenous retrovirus envelope protein genes has led to the identification of 16 genes [3]. Among them, two can induce cell-cell fusion when

expressed in different cells and are highly and specifically expressed in the human placenta [4-6]. The products of these two genes are glycoproteins named HERV-W Env glycoprotein (syncytin 1) and HERV-FRD Env glycoprotein (syncytin 2).

In the human placenta, the trophoblast differentiates along two major pathways both critical for normal placental function [7]. In the extravillous trophoblast inva-

sive pathway, the cytotrophoblastic cells of the anchoring villi in contact with the uterus wall proliferate, detach from the basement membrane and aggregate into multi-layered columns of non-polarized cells that invade the uterus wall (Fig. 1). These cells, which compose the extravillous cytotrophoblast (ECT), invade the endometrium, the first third of the myometrium and the associated spiral arterioles. In the villous trophoblast pathway, the cytotrophoblastic cells of the floating villi proliferate, differentiate and fuse to form a syncytiotrophoblast (ST) that covers the entire surface of the villi (Fig. 1). The syncytiotrophoblast layer plays a major role throughout pregnancy, since it is the site of numerous placental functions, including ion and nutrient exchange and the synthesis of steroid and peptide hormones required for fetal growth and development. This multinucleated syncytiotrophoblast is regenerated along pregnancy by a continuous turnover process including proliferation of underlying mononuclear cytotrophoblasts (CT), fusion of these cytotrophoblasts into syncytiotrophoblast and progression toward apoptosis.

In vitro isolated mononuclear cytotrophoblasts aggregate and fuse together to form a non proliferative, multinucleated syncytiotrophoblast which secretes human chorionic gonadotropin (hCG) and human placental lactogen (hPL), specific to pregnancy [8,9].

Trisomy of chromosome 21 (T21), which causes the phenotype known as Down syndrome, is the major known genetic cause of mental retardation and is found in around 1:800 live births. Little is known about placental development in this aneuploid condition. However, a defect in syncytiotrophoblast formation in T21-affected placentas is observed. Cultured cytotrophoblasts, isolated from T21-affected placentas, aggregate but fuse poorly or belatedly [10-13].

Trophoblast fusion and differentiation directly involves different molecular actors [14]. Among them, the HERV-W envelope glycoprotein named syncytin 1 is expressed in all trophoblastic cells [15,16] and directly involved in human trophoblast fusion and differentiation [17]. HERV-FRD Env glycoprotein (or syncytin 2) has been more recently shown to be expressed in the human placenta [1,4,18]. The aim of this work was therefore to study *in situ* and *in vitro* the expression and localization of syncytin 2 in human placenta at different stages of gestation, in normal and T21-affected pregnancies.

Results

Syncytin 2 is immunolocalized in cytotrophoblastic cells throughout normal pregnancy

Figure 2 shows the syncytin 2 immunolocalization in chorionic villi throughout normal pregnancy. In first trimes-

ter placenta (Fig. 2A-B), syncytin 2 was only detected at the level of the cytotrophoblastic cells, which form a continuous single layer of cuboidal cells beneath the syncytiotrophoblast. Immunostaining was observed only in the cytoplasm of some cytotrophoblastic cells and never observed in the syncytiotrophoblast and in the mesenchymal core of the villi (Fig. 2A-B). In second trimester placenta (Fig. 2C-D), syncytin 2 immunostaining was present: 1/in the cytoplasm of cytotrophoblastic cells; 2/in their thin elongated cytoplasmic processes coming into contact with the syncytiotrophoblast and covering the villus basal lamina. At term (Fig. 2E-F), immunostaining was detected at low magnification in a fraction of the flat cytotrophoblastic cells and extended into their thin cytoplasmic processes. Higher magnification showed the continuity of syncytin 2 immunostaining between the cytoplasm surrounding the nuclei and that of the thin elongated cytoplasmic processes.

Syncytin 2 immunostaining of cytotrophoblastic cells differs between T21 and gestational age-matched control placentas

A striking difference was observed between T21 second trimester placentas (18-19 weeks of gestation) and age-matched controls (Fig. 3). Indeed, as previously described, an increase in the thickness of the trophoblastic layer was observed in T21-placenta. As shown in figure 4, syncytin 2 was immunolocalized in some cuboidal cytotrophoblastic cells beneath the syncytiotrophoblast in T21 placentas (Fig. 4C-D). In gestational age-matched controls, syncytin 2 was observed in some flat cytotrophoblastic cells and extended into their thin elongated cytoplasmic processes (Fig. 4A-B), as already noted above.

With time in culture Syncytin 2 transcript levels decrease in normal but not in T21 cells

Cytotrophoblastic cells isolated from the chorionic villi of second trimester normal placentas adhere to plastic dishes, aggregate and fuse together to form a syncytiotrophoblast within 48 to 72 hours (Fig. 5 upper panel). Syncytin 2 positive immunostaining was only observed in some cytotrophoblastic cells forming aggregates; the staining was more intense at the sites of contact between these syncytin 2-positive, aggregated cells (data not shown). No immunostaining was observed in multinucleated syncytiotrophoblast after 48 or 72 hours of culture. Cytotrophoblastic cells isolated from T21-affected placentas adhered to the plastic dishes, aggregated, but did not fuse or fused only after a delay and poorly differentiated into syncytiotrophoblast (Fig. 5 T21). This was not associated with any significant increase in hCG secretion during the 72 hours of culture (Fig. 5 bottom panel). In these T21 trophoblastic cells, syncytin 2 transcript levels did not vary during the 72 hours of culture (Fig. 5 bottom panel).

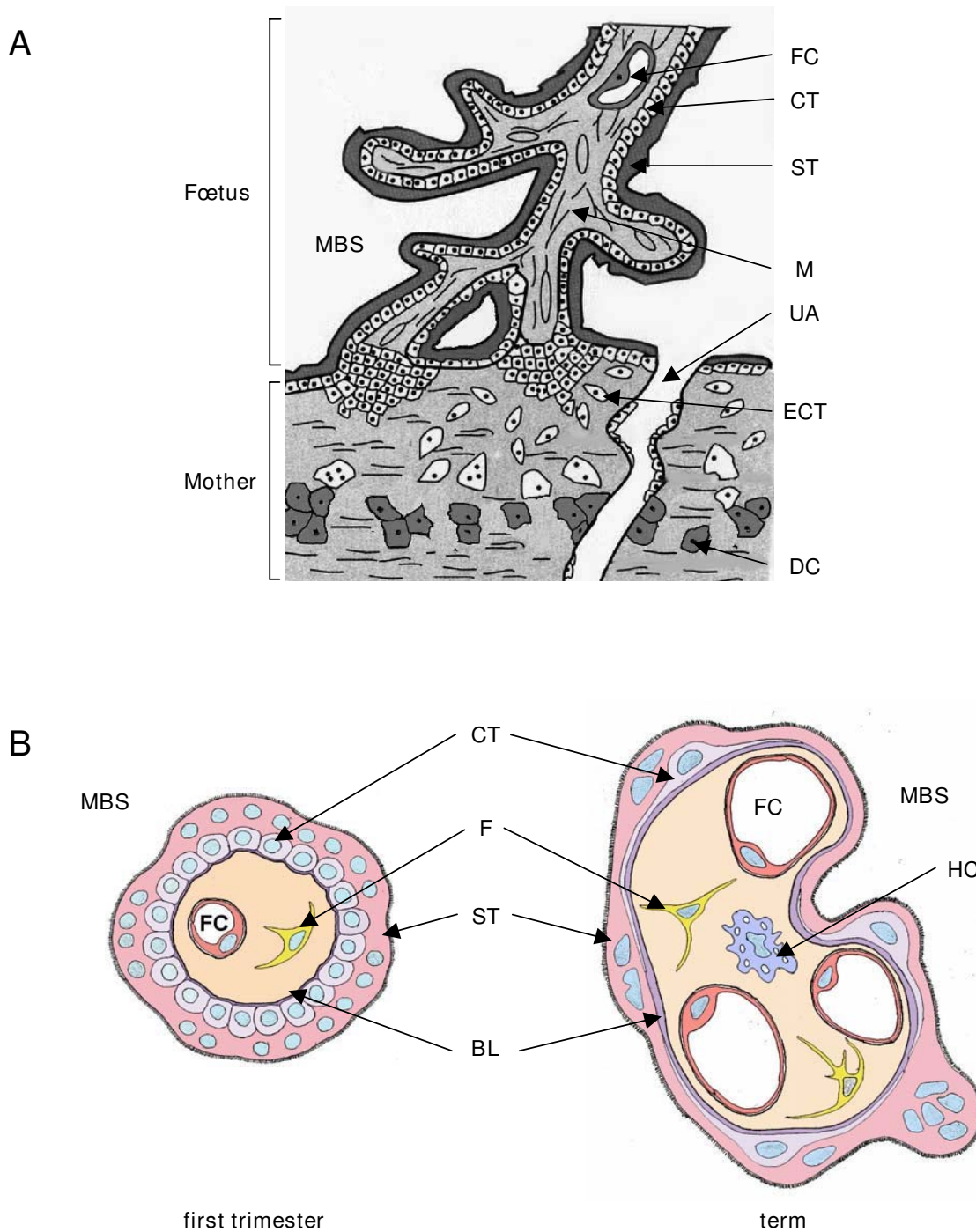
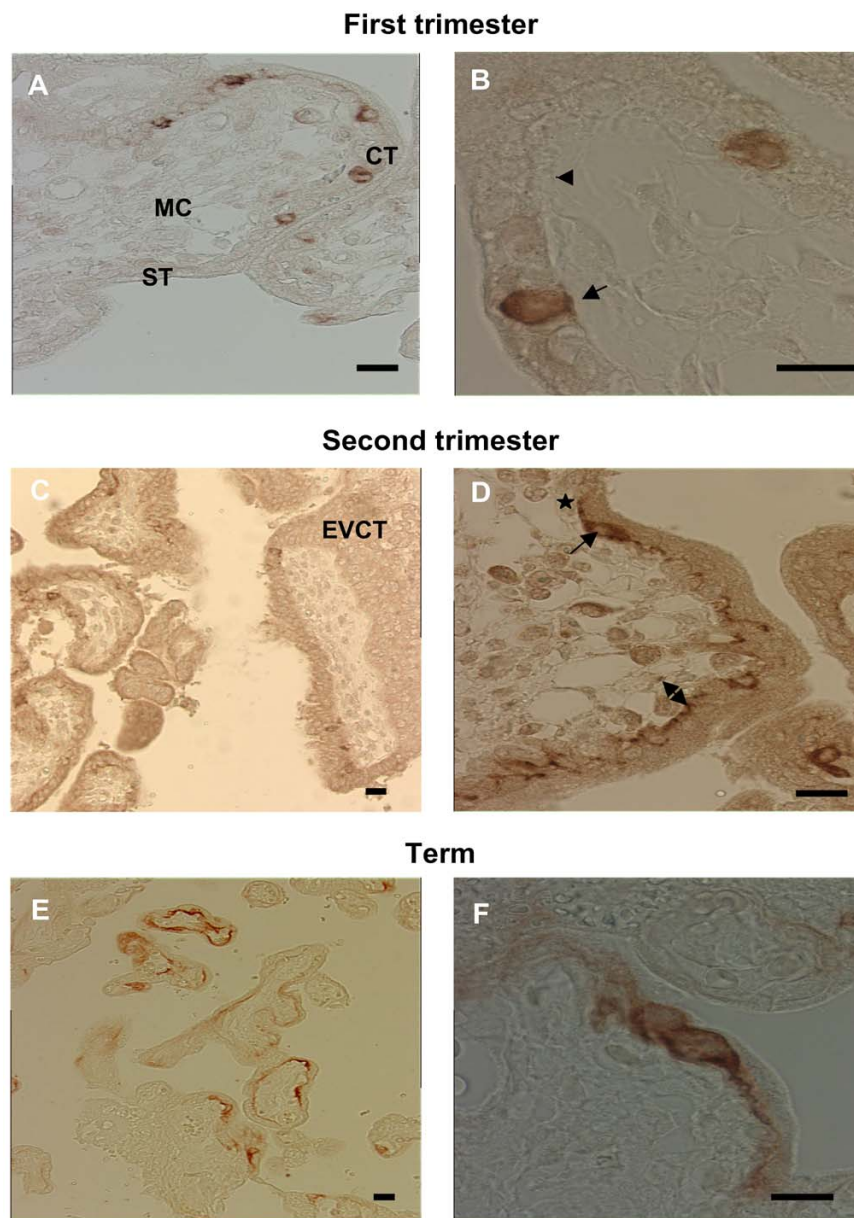


Figure 1

A. In humans, at 10–12 weeks of pregnancy, the chorionic floating villi are in contact with the maternal blood in the maternal blood space (MBS). In these villi, cytotrophoblastic cells (CT) differentiate by fusion to generate the syncytiotrophoblast (ST). In the anchoring villi the cytotrophoblastic cells proliferate and invade the decidua (DC). The extravillous cytotrophoblastic cells (ECT) invade the lumen of uterine arteries (UA). FC: Fetal capillary; M: mesenchyme. **B.** Evolution of human floating chorionic villi. The chorionic villi, in direct contact with the maternal blood in the maternal blood space (MBS), consist of cytotrophoblastic cells (CT) and syncytiotrophoblast (ST) surrounding a core of mesenchymal cells including fetal capillaries (FC), fibroblasts (F) and Hofbauer cells (HC). BL: basal lamina.

**Figure 2**

Immunohistochemical analysis of syncytin 2 (HERV-FRD Env) in human placenta. Top panel. First trimester floating villi (8 weeks of pregnancy). **A.** Syncytin 2 was detected in some cytotrophoblastic cells (CT). No immunostaining was observed in the syncytiotrophoblast (ST) and in the mesenchymal core (MC). Scale bar = 10 μ m. **B.** This large magnification allows to clearly establish the cytoplasmic localization of syncytin 2 immunostaining in a pair of cytotrophoblastic cells. At this gestational age the cytotrophoblast consists of a continuous single layer of cuboidal cells beneath the syncytiotrophoblast. Scale bar = 10 μ m. Arrowhead: non labeled CT, arrow: positively stained CT. Middle panel. Second trimester placenta (16 weeks of pregnancy). **C.** Immunostaining with anti-syncytin2 antibody shows positive reactivity in some cytotrophoblastic cells. No syncytin 2 reactivity was detected in the extravillous trophoblast (EVT), in the syncytiotrophoblast and in the mesenchymal core. Scale bar = 10 μ m. **D.** In this floating villi, syncytin 2 immunostaining was observed in the cytoplasm of some cytotrophoblastic cells (arrow), in their thin cytoplasmic processes (star) and at the level of the trophoblastic basal lamina (double head arrow). Scale bar = 10 μ m. Bottom panel. Term placenta floating villi. **E.** Syncytin 2 was detected in the cytoplasm surrounding the nuclei of flat cytotrophoblastic cells and in their thin elongated cytoplasmic processes. Staining was absent from some villi. Scale bar = 10 μ m. **F.** This large magnification allows to clearly establish the syncytin 2 immunostaining continuity within cytotrophoblasts between the cytoplasm surrounding the nuclei and that of the thin cytoplasmic processes. Scale bar = 10 μ m.

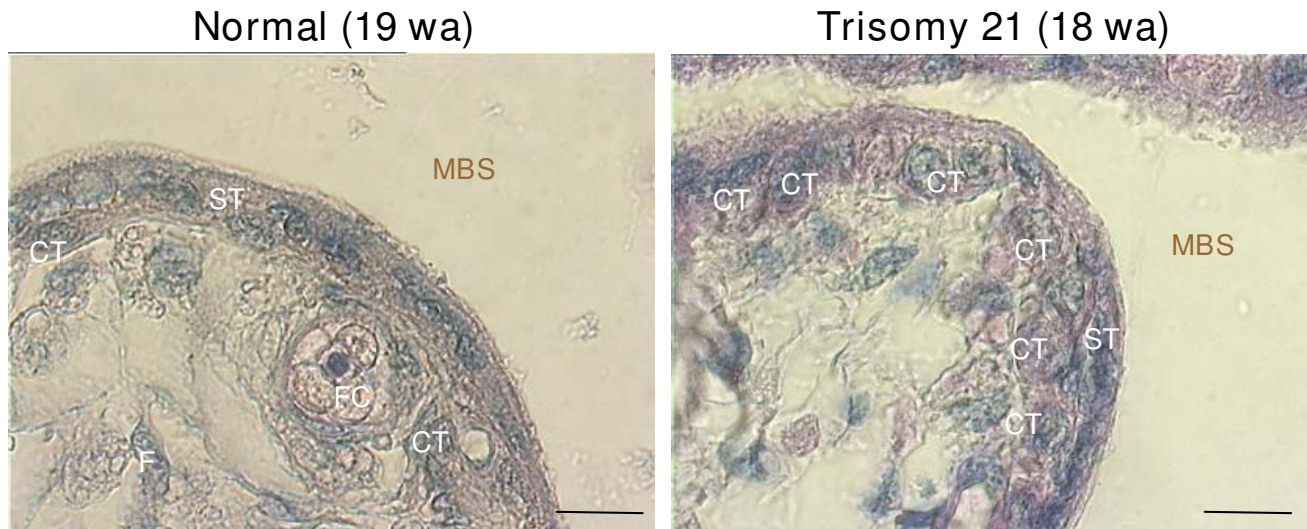


Figure 3

Second trimester chorionic villi of normal (19 weeks of amenorrhea: wa) and trisomy 21 (18 wa) placentae. In normal placenta, a large amount of cytotrophoblastic cells (CT) have fused into a thin multinucleated syncytiotrophoblast (ST). In trisomy 21 placenta, many cuboidal cytotrophoblastic cells (CT) are still present beneath the syncytiotrophoblast (ST) increasing the thickness of the trophoblastic layer. Scale bar = 10 μ m.

In contrast, in trophoblastic cells isolated from age-matched control placentas, the *in vitro* formation of syncytiotrophoblast was associated with a drastic increase in hCG secretion and syncytin 2 transcript levels decreased significantly ($p < 0.02$) between 24 and 72 hours of culture (Fig. 5).

Discussion

The role of endogenous retroviruses in placental morphogenesis and trophoblast differentiation was hypothesized 10 years ago [19]. More recent studies point to the presence of HERV-R (ERV 3), HERV-FRD, HERV-W, HERV-F, HERV-K and HERV-T in human placenta, coding for intact retroviral Env proteins [3]. However the role of these retroviral envelope proteins is still poorly understood.

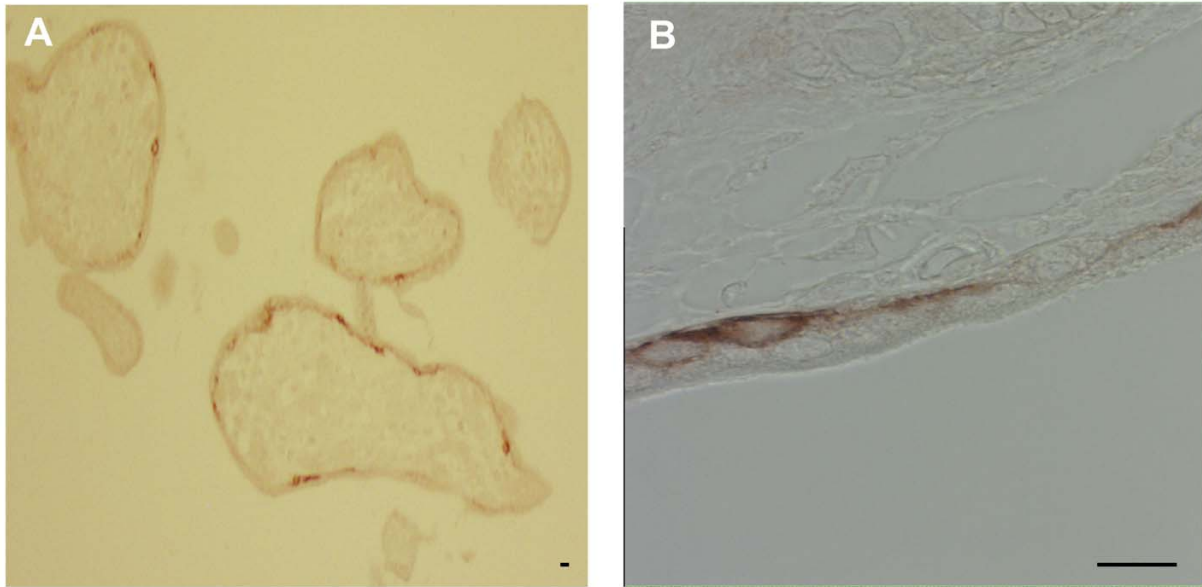
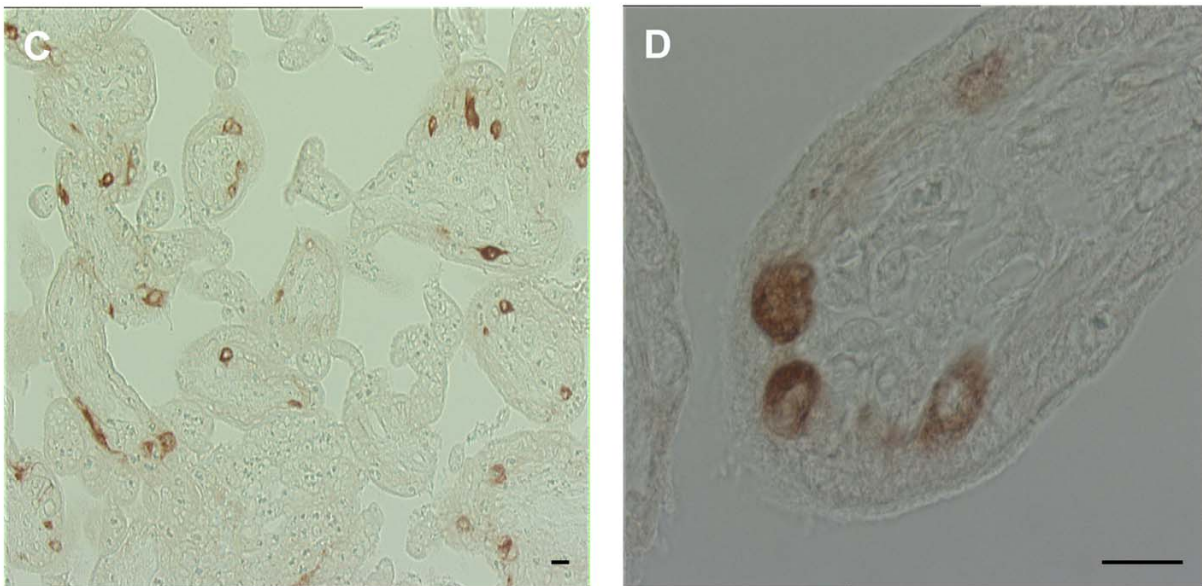
A role for the ERV-3 envelope protein (produced by the single-copy human endogenous retrovirus ERV-3) have been suggested in trophoblast proliferation and differentiation [20,21]. However, the physiological knockout of the ERV-3 envelope (lacking both the fusion peptide and the immunosuppressive domain) in 1% of the Caucasian population [22] suggests that no essential function in placentation is associated with the expression of the ERV-3 envelope protein.

HERV-W envelope protein, syncytin 1, is directly involved in villous trophoblast fusion and differentiation [17]. The syncytin 1 is expressed in all trophoblastic cells, villous

and extravillous trophoblast, independently of their differentiation stage [15,16].

In this study, we show that throughout pregnancy, HERV-FRD envelope protein, syncytin 2 is detected in some villous cytotrophoblastic cell and therefore this localization differs from syncytin 1 localization. All along pregnancy, the syncytiotrophoblast regenerates from the fusion of the underlying cytotrophoblasts. This process includes the continuous trophoblast turnover including proliferation of cytotrophoblast progenitors, the withdrawal of cytotrophoblasts from the cell cycle to G_0 , the recruitment of these post-mitotic cells to syncytiotrophoblast after membrane fusion and progression of syncytiotrophoblast towards apoptosis. Therefore the expression of syncytin 2 in some cytotrophoblastic cells suggest that it is expressed when the cytotrophoblastic cell is engaged in the fusion stage. As illustrated in second trimester placenta cytotrophoblastic cells are immunostained for syncytin 2 more frequently at the level of the cell membrane and this staining occurs at the sites of contact with the syncytiotrophoblast. Localization at this interface is precisely that expected for a protein directly involved in the fusion of the mononuclear cytotrophoblastic cells into the syncytiotrophoblast.

In addition, the syncytin 2 immunolabeling reflects the structural changes of the cytotrophoblastic layer during pregnancy. Indeed, as recently demonstrated, the cytro-

NORMAL**TRISOMY 21****Figure 4**

Immunohistochemical analysis of syncytin 2 (HERV-FRD Env) in age-matched second trimester (19 weeks) normal (upper panel) and T21-affected placentas (lower panel). Upper panel **A**. Immunostaining with anti-syncytin2 antibody showed positive reactivity in a fraction of elongated cytotrophoblastic cells. Scale bar = 10 μ m. **B**. In this large magnification, syncytin 2 immunostaining was observed in the cytoplasm of cytotrophoblastic cells and in the thin cytoplasmic processes. Scale bar = 10 μ m. Lower panel **C**. Syncytin 2 was detected in some cuboidal cytotrophoblastic cells. Scale bar = 10 μ m. **D**. This high magnification shows the cytoplasmic localization of syncytin 2 immunostaining in several cytotrophoblastic cells. Scale bar = 10 μ m.

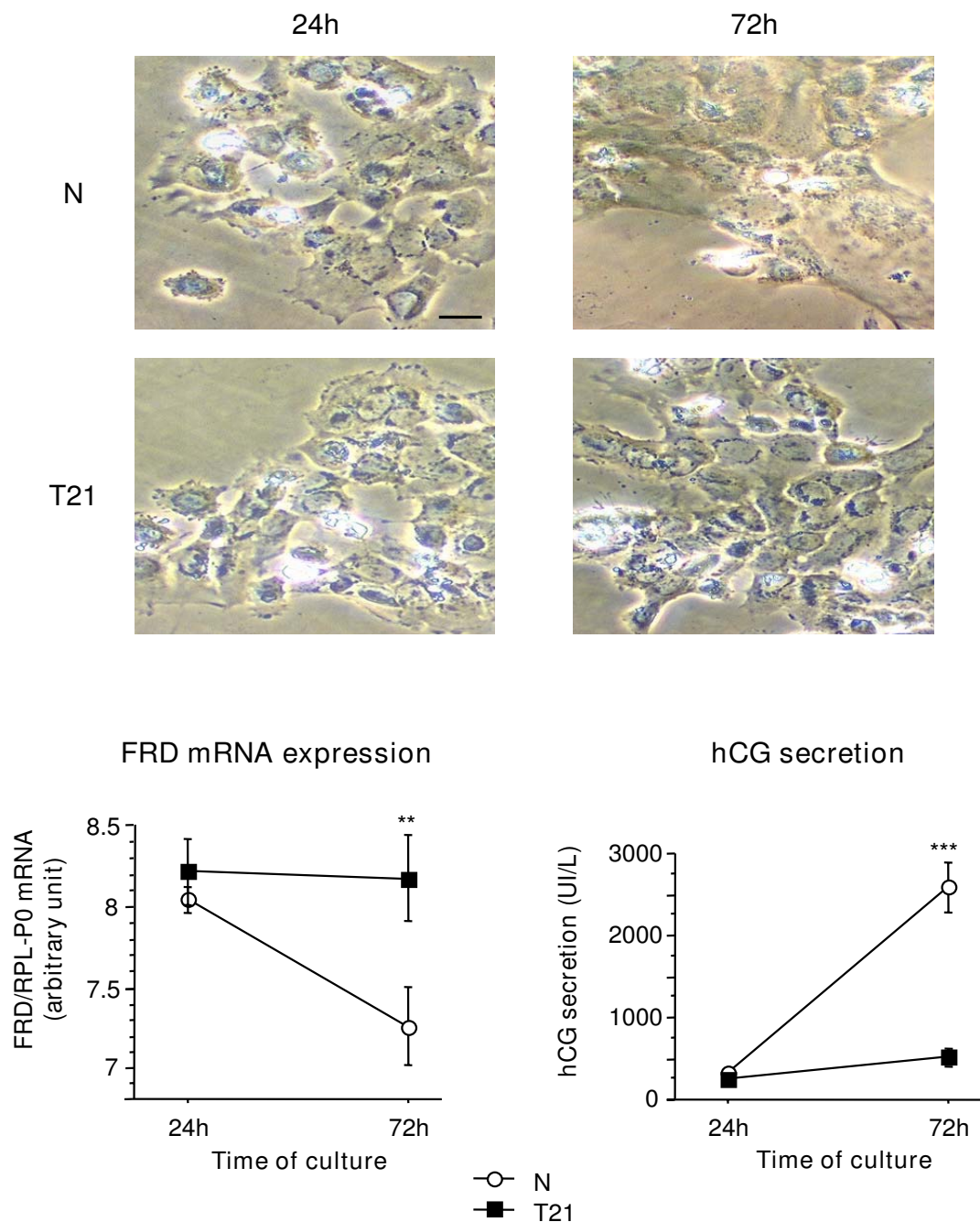


Figure 5

Morphological differentiation (upper panel), real-time RT-PCR analysis of *syncytin 2* (HERV-FRD *env*) transcripts (lower left panel) and hCG secretion (lower right panel) during *in vitro* culture of control and T21 trophoblastic cells. Cytotrophoblastic cells were purified from three distinct age matched (second trimester) control and T21-affected placentas and separately cultured. The cells were visualized under phase contrast light microscopy (Scale bar = 10 μ m). At 72 h, normal cytotrophoblastic cells had fused resulting in the formation of a large syncytium containing numerous nuclei. In contrast, T21 cytotrophoblasts were still aggregated and had not fused. Total mRNA were extracted after 24 and 72 h of culture. Data are expressed as the level of *syncytin 2* mRNA normalized to that of *RPLP0* mRNA. HCG secretion into the culture medium was measured at the indicated times, in normal (N) and T21-affected cell cultures. Results are the means \pm SEM of triplicate dishes from three different cultures.

phoblastic cell layer becomes thinner: the cuboidal cells are transformed to flat cells with many cellular processes that together with those of the adjacent syncytiotrophoblast eventually cover the basal lamina in a complex network of interdigitations [23].

In T21-affected placentas, localization of the labeled syncytin 2 differs notably from that in gestational age-matched control placentas. Syncytin 2 is mainly located in the cytoplasm of cuboidal cytotrophoblastic cells. This observation highlights *in situ* the delay in the fusion process of T21 trophoblastic cells and the delay in the maturation of the chorionic villi from T21-affected placentas [24,25] (Fig. 3).

In addition the transcript levels of syncytin 2 decreased significantly during *in vitro* differentiation of normal cytotrophoblastic cells into syncytiotrophoblast. In contrast in isolated T21 cytotrophoblastic cells, which did not fuse transcript levels of syncytin 2 did not vary with time in culture. Interestingly, we recently demonstrated that the *in vitro* defect of syncytiotrophoblast formation in T21 is reversible when cytotrophoblastic cells are treated with biosynthetic human chorionic gonadotropin. These results point to a major role of abnormal hCG and its receptor in T21 placental defect [26].

Envelope glycoprotein of HERV-W (syncytin 1) [17] interacts with its identified receptor RDR, also known as the neutral aminoacid transporter SLC1A5/ASCT2 [5,27]. Syncytin 2 entered the primate genome earlier than syncytin 1, namely before the split between New World and Old World Monkeys (i.e. >40 Myrs ago). It also differs in its receptor, as demonstrated by *ex vivo* cell-cell fusion assays using different cell types [4]. The identification of this receptor and the direct role of syncytin 2 of in human syncytiotrophoblast formation need to be investigated.

Recently, other retroviral envelope proteins have been identified in placenta from other species. In mouse placenta two related *env* genes (syncytin A and syncytin B) were characterized [28] and it was demonstrated that the endogenous Jaagsiekte sheep retrovirus envelope regulates trophoblast growth and differentiation in perimplantation ovine conceptus [29]. The role of these retroviral envelope proteins in fetoplacental development is still poorly known but their pleiotropic functions, including immunosuppressive activity argue for a critical role [1,30,31].

Conclusion

In summary data presented here show that the highly fusogenic retroviral FRD envelop protein, syncytin 2, is expressed in human placenta throughout pregnancy in some cytotrophoblastic cells, which might be in the

fusion stage. Syncytin 2 expression highlights the abnormal trophoblast differentiation observed in placenta of fetal T21-affected pregnancies.

Methods

Placenta collection

First trimester placentas were obtained from legal induced abortions (8–12 weeks of gestation). Term placentas were obtained after elective cesarean section from healthy mothers near term with uncomplicated pregnancies. Samples of second trimester placental tissues were collected at the time of termination of pregnancy at 12–25 weeks of gestation (in weeks of amenorrhea) in T21-affected pregnancies (n = 5) and gestational age-matched control cases (n = 5) as previously described [10]. Fetal Down syndrome was diagnosed by karyotyping of amniotic fluid cells, chorionic villi or fetal blood cells. Termination of pregnancy was performed in control cases affected by severe bilateral or low obstructive uropathy or major cardiac abnormalities. The karyotype of placental cells was checked in all cases (free trisomy 21 or normal). The use of these biological samples was approved by our local ethical committee.

Immunohistochemistry

Placental samples were fixed in 4% formalin for 4–12 h at room temperature and then embedded in paraffin. Briefly, paraffin sections were dewaxed in xylene and rehydrated in ethanol/water. Some sections were classically stained with H&E. Immunostaining was performed with an universal streptavidin-peroxidase immunostaining kit (Dako LSAB, Glostrup, Denmark) using a syncytin 2 monoclonal antibody [18]. All controls, performed with a mouse isotypic IgG1 at the same concentration as the primary antibody were negative.

Cell culture

For *in vitro* culture villous cytotrophoblastic cells were isolated from second trimester placentas (gestational age-matched controls and T21-affected placentas). 90%–95% of the cells isolated from the normal or T21 placentas were cytokeratin 7-positive. Cells plated in triplicate were cultured for 3 days. Trophoblastic fusion was monitored by desmoplakin immunostaining and nuclei counting as previously described [14].

Quantification of specific transcripts by real-time RT-PCR

Total RNA was extracted from villous trophoblastic cells cultured for 24 h and 72 h using QIAGEN RNeasy mini kit. cDNA synthesis and PCR amplification were performed as described previously [10]. All PCR reactions were performed using an ABI Prism 7700 Sequence Detection System and the SYBER Green PCR Core Reagents kit (Perkin-Elmer). We used the following primers: FRD (+) 5'-GCCTGC A AATAGTCTTCTTT-3' and FRD (-) 5'-ATAG-

GGGCTATCCCATTAG-3'. RNA from the *RPLP0* gene encoding the human acidic ribosomal phosphoprotein-P0 was used as an internal control and each sample was normalized to *RPLP0* transcript content. The *RPLP0* primers used for amplification were: (+) 5'-GGCGACCTGGAA GTCCAAT-3' and (-) 5'-CCATCAGCACCA CAGCCTTC-3'.

Hormonal assay

The hCG concentration was determined in culture medium at 24 h and 72 h of culture, using an enzyme.

Competing interests

The author(s) declare that they have no competing interests.

Authors' contributions

AM performed most of the experimental work and wrote the manuscript. JLF carried out the molecular studies in trophoblastic cells in culture, SB participated in immunostaining, KH participated in immunocytochemistry, PG participated in the isolation of trophoblastic cells, VT participated in placental collection, TH and DEB conceived of the study and participated in its design and coordination and helped to draft the manuscript.

All authors read and approved the final manuscript.

Acknowledgements

The authors wish to thank Prof. Foidart (Université de Liège, Belgium) and the staff of the Obstetrics Department of the Cochin, Saint Vincent de Paul, Broussais, Beaujon and Robert Debré Hospitals (Paris, France), for assistance with specimen collections, as well as Patrick Saunier and the Translational Research Laboratory (Institut Gustave-Roussy, 94805 Villejuif) for expertise in RT-PCR analysis, Jean Guibourdenche for expertise in hCG assay and Christian Lavielle for critical reading of the manuscript.

This work was supported by la Caisse d'Assurance Maladie des Professions Libérales Province and la CANAM.

References

- de Parseval N, Heidmann T: **Human endogenous retroviruses: from infectious elements to human genes.** *Cytogenet Genome Res* 2005, **110(1-4)**:318-332.
- Lander ES, Linton LM, Birren B, Nussbaum C, Zody MC, Baldwin J, Devon K, Dewar K, Doyle M, FitzHugh W, Funke R, Gage D, Harris K, Heaford A, Howland J, Kann L, Lehoczky J, LeVine R, McEwan P, McKernan K, Meldrim J, Mesirov JP, Miranda C, Morris W, Naylor J, Raymond C, Rosetti M, Santos R, Sheridan A, Sougnez C, Stange-Thomann N, Stojanovic N, Subramanian A, Wyman D, Rogers J, Sulston J, Ainscough R, Beck S, Bentley D, Burton J, Clee C, Carter N, Coulson A, Deadman R, Deloukas P, Dunham A, Dunham I, Durbin R, French L, Grafham D, Gregory S, Hubbard T, Humphray S, Hunt A, Jones M, Lloyd C, McMurray A, Matthews L, Mercer S, Milne S, Mullikin JC, Mungall A, Plumb R, Ross M, Shownkeen R, Sims S, Waterston RH, Wilson RK, Hillier LW, McPherson JD, Marra MA, Mardis ER, Fulton LA, Chinwalla AT, Pepin KH, Gish WR, Chissoe SL, Wendl MC, Delehaunty KD, Miner TL, Delehaunty A, Kramer JB, Cook LL, Fulton RS, Johnson DL, Minx PJ, Clifton SW, Hawkins T, Branscomb E, Predki P, Richardson P, Wenning S, Slezak T, Doggett N, Cheng JF, Olsen A, Lucas S, Elkin C, Uberbacher E, Frazier M, Gibbs RA, Muzny DM, Scherer SE, Bouck JB, Sodergren EJ, Worley KC, Rives CM, Gorrell JH, Metzker ML, Naylor SL, Kucherlapati RS, Nelson DL, Weinstock GM, Sakaki Y, Fujiiyama A, Hattori M, Yada T, Toyoda A, Itoh T, Kawagoe C, Watanabe H, Totoki Y, Taylor T, Weissbach J, Heilig R, Saurin W, Artiguenave F, Brottier P, Bruls T, Pelletier E, Robert C, Wincker P, Smith DR, Doucette-Stamm L, Rubenfield M, Weinstock K, Lee HM, Dubois J, Rosenthal A, Platzer M, Nyakatura G, Taudien S, Rump A, Yang H, Yu J, Wang J, Huang G, Gu J, Hood L, Rowen L, Madan A, Qin S, Davis RW, Federspiel NA, Abola AP, Proctor MJ, Myers RM, Schmutz J, Dickson M, Grimwood J, Cox DR, Olson MV, Kaul R, Raymond C, Shimizu N, Kawasaki K, Minoshima S, Evans GA, Athanasiou M, Schultz R, Roe BA, Chen F, Pan H, Ramsay J, Lehrach H, Reinhardt R, McCombie WR, de la Bastide M, Dedhia N, Blocker H, Hornischer K, Nordsiek G, Agarwala R, Aravind L, Bailey JA, Bateman A, Batzoglu S, Birney E, Bork P, Brown DG, Burge CB, Cerutti L, Chen HC, Church D, Clamp M, Copley RR, Doerks T, Eddy SR, Eichler EE, Furey TS, Galagan J, Gilbert JG, Harmon C, Hayashizaki Y, Haussler D, Hermjakob H, Hokamp K, Jang W, Johnson LS, Jones TA, Kasif S, Kasprzyk A, Kennedy S, Kent WJ, Kitts P, Koonin EV, Korf I, Kulp I, Kulp D, Lowe TM, McLysaght A, Mikkelsen T, Moran JV, Mulder N, Pollara VJ, Ponting CP, Schuler G, Schultz J, Slater G, Smit AF, Stupka E, Szustakowski J, Thierry-Mieg D, Thierry-Mieg J, Wagner L, Wallis J, Wheeler R, Williams A, Wolf YI, Wolfe KH, Yang SP, Yeh RF, Collins F, Guyer MS, Peterson J, Felsenfeld A, Wetterstrand KA, Patrino A, Morgan MJ, de Jong P, Catanese JJ, Osoegawa K, Shizuya H, Choi S, Chen YJ: **Initial sequencing and analysis of the human genome.** *Nature* 2001, **409(6822)**:860-921.
- de Parseval N, Lazar V, Casella JF, Benit L, Heidmann T: **Survey of human genes of retroviral origin: identification and transcriptome of the genes with coding capacity for complete envelope proteins.** *J Virol* 2003, **77(19)**:10414-10422.
- Blaise S, de Parseval N, Benit L, Heidmann T: **Genomewide screening for fusogenic human endogenous retrovirus envelopes identifies syncytin 2, a gene conserved on primate evolution.** *Proc Natl Acad Sci U S A* 2003, **100(22)**:13013-13018.
- Blond JL, Lavillette D, Cheynet V, Bouton G, Oriol G, Chapel-Fernandes S, Mandrand B, Mallet F, Cosset FL: **An envelope glycoprotein of the human endogenous retrovirus HERV-W is expressed in the human placenta and fuses cells expressing the type D mammalian retrovirus receptor.** *J Virol* 2000, **74(7)**:3321-3329.
- Mi S, Lee X, Li X, Veldman GM, Finnerty H, Racie L, LaVallie E, Tang XY, Edouard P, Howes S, Keith JC Jr., McCoy JM: **Syncytin is a captive retroviral envelope protein involved in human placental morphogenesis.** *Nature* 2000, **403(6771)**:785-789.
- Bernischke K, Kaufmann P: **Pathology of the human placenta.** In 4th edition Edited by: Springer . New-York ; 2000.
- Alsat E, Mirlesse V, Fondacci C, Dodeur M, Evain-Brion D: **Parathyroid hormone increases epidermal growth factor receptors in cultured human trophoblastic cells from early and term placenta.** *J Clin Endocrinol Metab* 1991, **73(2)**:288-295.
- Kliman HJ, Nestler JE, Sermasi E, Sanger JM, Strauss JF 3rd: **Purification, characterization, and in vitro differentiation of cytotrophoblasts from human term placentae.** *Endocrinology* 1986, **118(4)**:1567-1582.
- Frendo JL, Vidaud M, Guibourdenche J, Luton D, Muller F, Bellet D, Giovannardi Y, Tarrade A, Porquet D, Blot P, Evain-Brion D: **Defect of villous cytotrophoblast differentiation into syncytiotrophoblast in Down's syndrome.** *J Clin Endocrinol Metab* 2000, **85(10)**:3700-3707.
- Pidoux G, Guibourdenche J, Frendo JL, Gerbaud P, Conti M, Luton D, Muller F, Evain-Brion D: **Impact of trisomy 21 on human trophoblast behaviour and hormonal function.** *Placenta* 2004, **25 Suppl A**:S79-84.
- Frendo JL, Guibourdenche J, Pidoux G, Vidaud M, Luton D, Giovannardi Y, Porquet D, Muller F, Evain-Brion D: **Trophoblast production of a weakly bioactive human chorionic gonadotropin in trisomy 21-affected pregnancy.** *J Clin Endocrinol Metab* 2004, **89(2)**:727-732.
- Pidoux G, Gerbaud P, Marpeau O, Guibourdenche J, Ferreira F, Badet J, Evain-Brion D, Frendo JL: **Human placental development is impaired by abnormal hCG signaling in trisomy 21 pregnancies.** *Endocrinology* 2007.
- Frendo JL, Cronier L, Bertin G, Guibourdenche J, Vidaud M, Evain-Brion D, Malassine A: **Involvement of connexin 43 in human trophoblast cell fusion and differentiation.** *J Cell Sci* 2003, **116(Pt 16)**:3413-3421.

15. Malassine A, Handschuh K, Tsatsaris V, Gerbaud P, Cheynet V, Oriol G, Mallet F, Evain-Brion D: **Expression of HERV-W Env glycoprotein (syncytin) in the extravillous trophoblast of first trimester human placenta.** *Placenta* 2005, **26(7)**:556-562.
16. Muir A, Lever AM, Moffett A: **Human endogenous retrovirus-W envelope (syncytin) is expressed in both villous and extravillous trophoblast populations.** *J Gen Virol* 2006, **87(Pt 7)**:2067-2071.
17. Frendo JL, Olivier D, Cheynet V, Blond JL, Bouton O, Vidaud M, Rabreau M, Evain-Brion D, Mallet F: **Direct involvement of HERV-W Env glycoprotein in human trophoblast cell fusion and differentiation.** *Mol Cell Biol* 2003, **23(10)**:3566-3574.
18. Malassine A, Blaise S, Handschuh K, Lalucque H, Dupressoir A, Evain-Brion D, Heidmann T: **Expression of the Fusogenic HERV-FRD Env Glycoprotein (Syncytin 2) in Human Placenta is Restricted to Villous Cytotrophoblastic Cells.** *Placenta* 2007, **28(2-3)**:185-191.
19. Harris JR: **Placental endogenous retrovirus (ERV): structural, functional, and evolutionary significance.** *Bioessays* 1998, **20(4)**:307-316.
20. Lin L, Xu B, Rote NS: **Expression of endogenous retrovirus ERV-3 induces differentiation in BeWo, a choriocarcinoma model of human placental trophoblast.** *Placenta* 1999, **20(1)**:109-118.
21. Lin L, Xu B, Rote NS: **The cellular mechanism by which the human endogenous retrovirus ERV-3 env gene affects proliferation and differentiation in a human placental trophoblast model, BeWo.** *Placenta* 2000, **21(1)**:73-78.
22. de Parseval N, Heidmann T: **Physiological knockout of the envelope gene of the single-copy ERV-3 human endogenous retrovirus in a fraction of the Caucasian population.** *J Virol* 1998, **72(4)**:3442-3445.
23. Mori M, Ishikawa G, Luo SS, Mishima T, Goto T, Robinson JM, Matsubara S, Takeshita T, Kataoka H, Takizawa T: **The cytotrophoblast layer of human chorionic villi becomes thinner but maintains its structural integrity during gestation.** *Biol Reprod* 2007, **76(1)**:164-172.
24. Oberweis D, Gillerot Y, Koulischer L, Hustin J, Philippe E: **[The placenta in trisomy in the last trimester of pregnancy].** *J Gynecol Obstet Biol Reprod (Paris)* 1983, **12(4)**:345-349.
25. Roberts L, Sebire NJ, Fowler D, Nicolaides KH: **Histomorphological features of chorionic villi at 10-14 weeks of gestation in trisomic and chromosomally normal pregnancies.** *Placenta* 2000, **21(7)**:678-683.
26. Pidoux G, Gerbaud P, Marpeau O, Guibourdenche J, Ferreira F, Badet J, Evain-Brion D, Frendo JL: **Human placental development is impaired by abnormal human chorionic gonadotropin signaling in trisomy 21 pregnancies.** *Endocrinology* 2007, **148(11)**:5403-5413.
27. Cheynet V, Oriol G, Mallet F: **Identification of the hASCT2-binding domain of the Env ERVWE1/syncytin-I fusogenic glycoprotein.** *Retrovirology* 2006, **3**:41.
28. Dupressoir A, Marceau G, Vernochet C, Benit L, Kanellopoulos C, Sapin V, Heidmann T: **Syncytin-A and syncytin-B, two fusogenic placenta-specific murine envelope genes of retroviral origin conserved in Muridae.** *Proc Natl Acad Sci U S A* 2005, **102(3)**:725-730.
29. Dunlap KA, Palmarini M, Varela M, Burghardt RC, Hayashi K, Farmer JL, Spencer TE: **Endogenous retroviruses regulate periimplantation placental growth and differentiation.** *Proc Natl Acad Sci U S A* 2006, **103(39)**:14390-14395.
30. Prudhomme S, Bonnaud B, Mallet F: **Endogenous retroviruses and animal reproduction.** *Cytogenet Genome Res* 2005, **110(1-4)**:353-364.
31. Gong R, Huang L, Shi J, Luo K, Qiu G, Feng H, Tien P, Xiao G: **Syncytin-A mediates the formation of syncytiotrophoblast involved in mouse placental development.** *Cell Physiol Biochem* 2007, **20(5)**:517-526.

Publish with **BioMed Central** and every scientist can read your work free of charge

"BioMed Central will be the most significant development for disseminating the results of biomedical research in our lifetime."

Sir Paul Nurse, Cancer Research UK

Your research papers will be:

- available free of charge to the entire biomedical community
- peer reviewed and published immediately upon acceptance
- cited in PubMed and archived on PubMed Central
- yours — you keep the copyright

Submit your manuscript here:
http://www.biomedcentral.com/info/publishing_adv.asp

