

AUTHOR'S CORRECTION

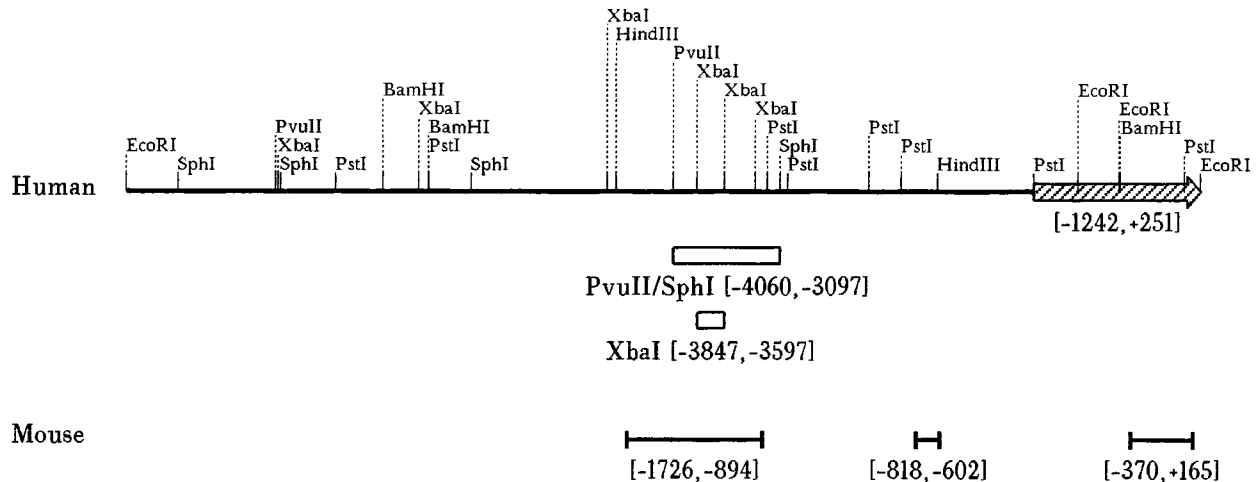
Elf-1 and Stat5 Bind to a Critical Element in a New Enhancer of the Human Interleukin-2 Receptor α Gene

PATRICK LÉCINE, MICHÈLE ALGARTÉ, PASCAL RAMEIL, CAROL BEADLING, PHILIPP BUCHER, MARKUS NABHOLZ, AND JEAN IMBERT

INSERM U119, 13009 Marseille, France; Lymphocyte Activation Laboratory, Imperial Cancer Research Fund, London WC2A 3PX, United Kingdom; and Swiss Institute for Experimental Cancer Research, CH-1066 Epalinges, Switzerland

Volume 16, no. 12, p. 6831: The nucleotide numbering in Fig. 1 was inadvertently erroneous. A mistake during the computer-assisted assembling of the contigs introduced an artificial internal duplication of 413 bp, downstream of the interleukin-2-responsive enhancer (IL-2rE) within a repetitive portion of the sequence. The corrected Fig. 1 is shown below. The corresponding entry Z70243 in the EMBL Nucleotide Sequence Database has been corrected accordingly. We apologize for any confusion that this may have caused.

A



B

Human:	GASd/EBSd		GASp/GATA		EBSp			
-3780	-3770	-3760	-3750	-3740	-3730	-3720	-3710	
GCTGTTCTGAGCAGTTTCTCTAGGAA	AGTACCAAACATTTCTGATAA	TAGAATTGAGCAATTTCCCTGATGAAGTGAGACTCAGCTT						
GATATGATGTGCAGTTTCTCTGAGAA	GTACCAGACATTTCTGATAA	GAGAGTTGAGCAACTTCCCTGAT-ATGTGAGACTCAGCTT						
-1380	-1370	-1360	-1350	-1340	-1330	-1320	-1310	-1300
Mouse:	GASd		GASp/GATA		EBSp			