

ERRATUM

Genetic Analysis of Lipooligosaccharide Core Biosynthesis in *Campylobacter jejuni* 81-176

Margaret I. Kanipes, Xuan Tan, Aurel Akelaitis, Jiajun Li, David Rockabrand,
Patricia Guerry, and Mario A. Monteiro

Department of Chemistry, North Carolina Agricultural and Technical State University, Greensboro, North Carolina 27411;
Department of Chemistry, University of Guelph, Guelph, Ontario N1G 2W1, Canada; National Research Council,
Ottawa, Ontario K4A 4G5, Canada; and Enteric Diseases Department, Naval Medical Research Center,
Silver Spring, Maryland 20910

Volume 190, no. 5, p. 1568–1574, 2008. Page 1572: Figure 6 should appear as shown below.

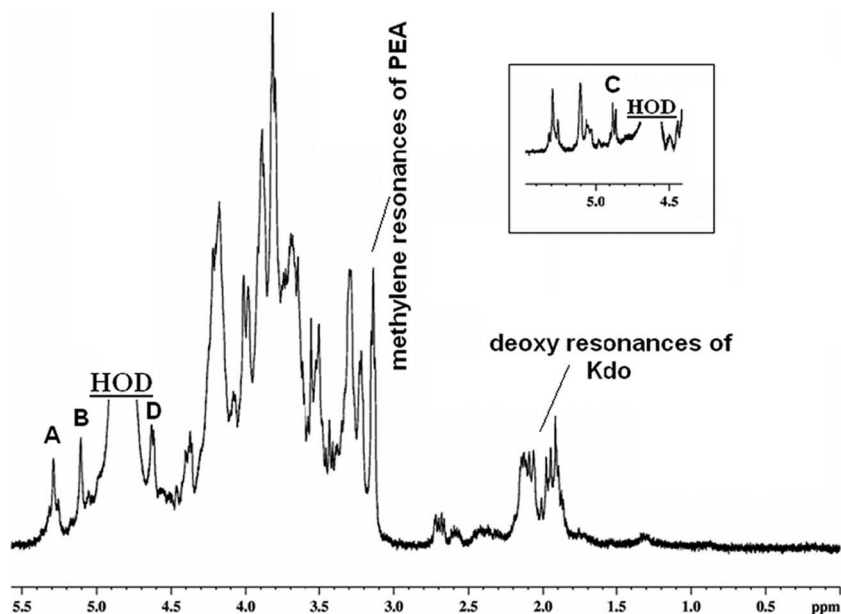


FIG. 6. $^1\text{H-NMR}$ spectrum of *C. jejuni* 81-176 *galT* core OS. The spectrum shows two α -anomeric resonances of LD-Hep units (A and B) and two β -anomeric resonances of Glc units (C and D); the deoxy signals of the Kdo unit and the methylene resonances of the PEA moiety are also evident. The inset shows the anomeric region of the $^1\text{H-NMR}$ spectrum obtained at 35°C to reveal anomeric resonance C, which coresonates with the HOD peak at 21°C . No GalNAc *N*-acetyl resonances were detected.