

Research article

Open Access

## Control of trichome branching by Chromatin Assembly Factor-I

Vivien Exner, Wilhelm Gruitsem and Lars Hennig\*

Address: Institute of Plant Sciences & Zurich-Basel Plant Science Center, ETH Zurich, CH-8092 Zurich, Switzerland

Email: Vivien Exner - vexner@ethz.ch; Wilhelm Gruitsem - Wilhelm.Gruitsem@ethz.ch; Lars Hennig\* - lhennig@ethz.ch

\* Corresponding author

Published: 13 May 2008

Received: 5 February 2008

BMC Plant Biology 2008, 8:54 doi:10.1186/1471-2229-8-54

Accepted: 13 May 2008

This article is available from: <http://www.biomedcentral.com/1471-2229/8/54>

© 2008 Exner et al; licensee BioMed Central Ltd.

This is an Open Access article distributed under the terms of the Creative Commons Attribution License (<http://creativecommons.org/licenses/by/2.0>), which permits unrestricted use, distribution, and reproduction in any medium, provided the original work is properly cited.

### Abstract

**Background:** Chromatin dynamics and stability are both required to control normal development of multicellular organisms. Chromatin assembly factor CAF-I is a histone chaperone that facilitates chromatin formation and the maintenance of specific chromatin states. In plants and animals CAF-I is essential for normal development, but it is poorly understood which developmental pathways require CAF-I function.

**Results:** Mutations in all three CAF-I subunits affect Arabidopsis trichome morphology and lack of CAF-I function results in formation of trichomes with supernumerary branches. This phenotype can be partially alleviated by external sucrose. In contrast, other aspects of the CAF-I mutant phenotype, such as defective meristem function and organ formation, are aggravated by external sucrose. Double mutant analyses revealed epistatic interactions between CAF-I mutants and *stichel*, but non-epistatic interactions between CAF-I mutants and *glabra3* and *kaktus*. In addition, mutations in CAF-I could partly suppress the strong overbranching and polyploidization phenotype of *kaktus* mutants.

**Conclusion:** CAF-I is required for cell differentiation and regulates trichome development together with STICHEL in an endoreduplication-independent pathway. This function of CAF-I can be partially substituted by application of exogenous sucrose. Finally, CAF-I is also needed for the high degree of endoreduplication in *kaktus* mutants and thus for the realization of *kaktus*' extreme overbranching phenotype.

### Background

Chromatin stability and dynamics have to be well balanced to guarantee normal development. While flexibility of the chromatin structure permits developmental transitions necessary during the life cycle of an organism, epigenetic as well as genetic information has to be reliably propagated within a certain developmental phase. Various protein complexes have been described to be involved in chromatin regulation [1-3]. One biochemically well characterized complex involved in chromatin replication is Chromatin Assembly Factor CAF-1, which deposits his-

tones H3 and H4 in a replication-dependent manner onto DNA (for review see [4,5]. This complex was initially identified as a negative supercoiling-inducing factor in human cell extracts [6,7] and is conserved among all major eukaryotic lineages. Homologs have been found in yeast (subunits CAC1, CAC2, CAC3; [8], in mammals (p150, p60, p48; [9], in insects (p180, p105/75, p55; [10-12] and in plants (FASCIATA (FAS) 1, FAS2, MSI1; [13,14].

Yeast CAF-1 mutants have impaired maintenance of silencing at mating type loci and near the telomeres, and

exhibit increased sensitivity towards ultraviolet radiation [8,15-20]. In higher eukaryotes, CAF-1 is specific for replication-coupled deposition of the H3.1 variant, while other histone chaperones deposit the H3.3 variant (called H3.2 in plants) in a replication-independent way [21,22]. Because mostly H3.3 and much less H3.1 is found in active chromatin [23], it has been proposed that CAF-1-mediated assembly of chromatin facilitates transcriptional repression through H3.1 deposition [24]. A recent report that H3.1-containing nucleosomes are more stable than H3.3-containing nucleosomes supports this model [25]. Replication-coupled deposition of H3.1 by CAF-1 is essential in metazoans, because loss of CAF-1 function causes severe defects in chromatin metabolism and eventual cell death in mouse and human cells [26-30]. Loss of CAF-1 causes developmental arrest in *Xenopus laevis* [31], *Drosophila* [32] and zebrafish [33].

*Arabidopsis thaliana* is the only higher eukaryote for which viable CAF-1 mutants are available (for review see [34]). Mutants deficient in FAS1 and FAS2, the two larger subunits of Arabidopsis CAF-1, were originally isolated for their altered phyllotaxis and their flattened and bifurcated stems [35,36], which is a phenotype known as fasciation [37]. Fasciation is associated with altered expression of *WUSCHEL*, which is a key regulatory gene that defines the stem cell niche in the shoot apical meristem (SAM) [13]. Misspecification of the *WUSCHEL* domain alters size and shape of the meristem, which subsequently changes primordia spacing and therefore causes distortion of phyllotaxis. In contrast to null mutants of *FAS1* and *FAS2* that are viable null mutants of the smallest CAF-1 subunit MSI1 are lethal [38]. This lethality is not caused by loss of CAF-1 function, however, but by loss of the FERTILIZATION INDEPENDENT SEED DEVELOPMENT (FIS) complex, of which MSI1 is a subunit as well [39].

Initial research with *fas* mutants focused on CAF-1 function in meristematic tissue [13,35,36]. Recent studies showed, however, that CAF-1 is also needed for complete compaction of heterochromatin and maintenance of transcriptional gene silencing [40,41], homologous recombination [42,43], regulation of endoreduplication [34], and cell differentiation [44].

Trichomes or leaf hairs protrude from the leaf surface to protect the plant against adverse environmental conditions and herbivorous insects [45,46]. Depending on the plant species and function, trichomes are uni- or multicellular, metabolically active or inactive structures. In *Arabidopsis thaliana*, trichomes are single, living cells with a complex structure, which makes them well suited to study cell determination and differentiation. Trichomes originate from the epidermal cell layer and are evenly spaced by lateral inhibition (for an overview see: [47]). After

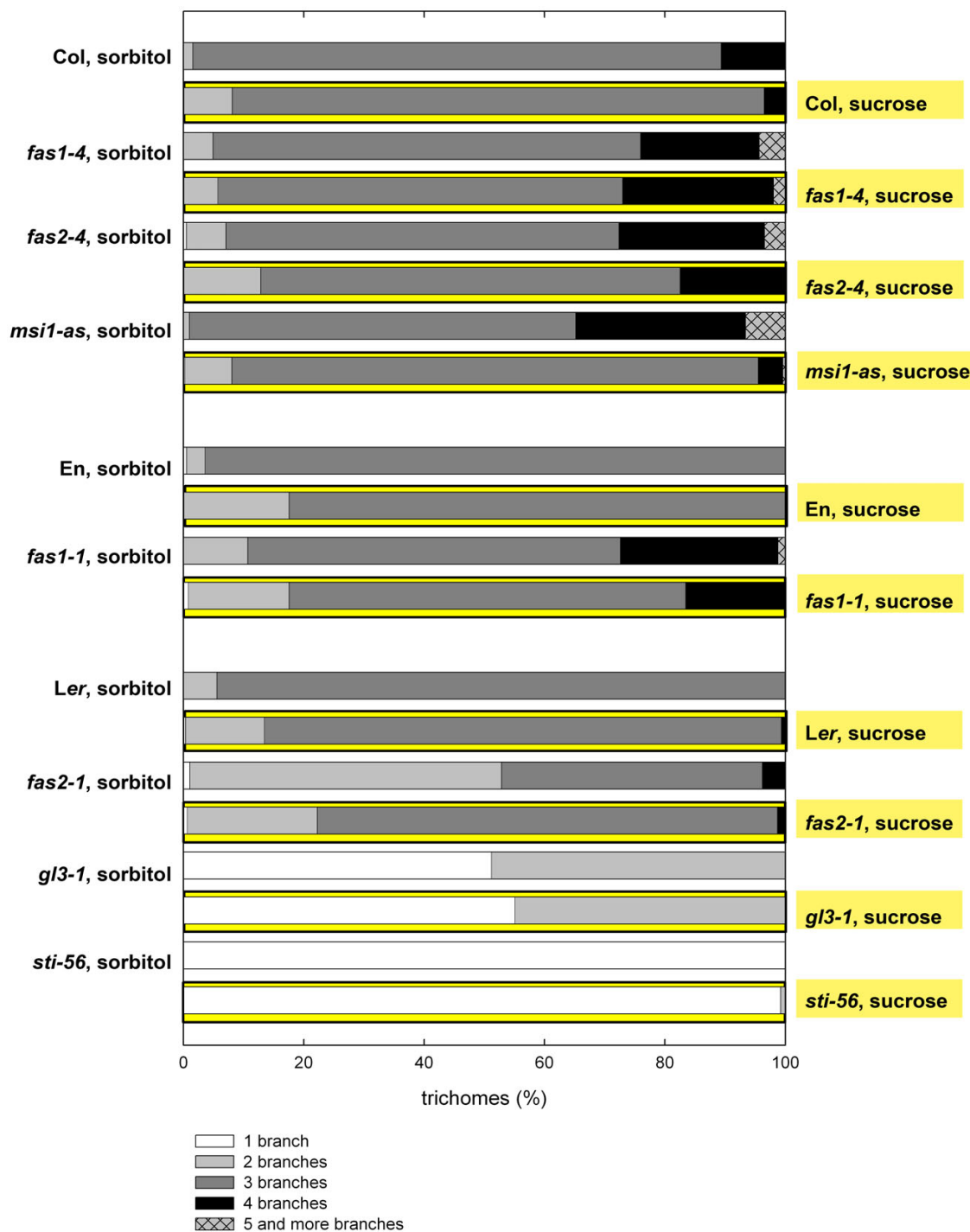
determination, the trichome progenitor cell stops division and switches to endoreduplication. The cell enlarges and protrudes from the epidermal cell layer. On rosette leaves, two branching events give trichomes their characteristic three-ended morphology. Genetic analyses have revealed a complex regulatory network that controls trichome spacing and differentiation. Two major groups of genes control branching. Some of the genes influence branching directly, while others control branch number in an endoreduplication-dependent manner (reviewed by: [48]).

We have previously reported that trichome differentiation requires a functional CAF-1 complex, but it remained open in which genetic pathway CAF-1 acts during this process [44]. Here we provide evidence that CAF-1 and *STICHEL* (*STI*), which encodes a protein with similarity to ATP-binding eubacterial DNA-polymerase III-subunits [49], together control trichome differentiation in an endoreduplication-independent pathway.

## Results

### **Sucrose suppresses the CAF-1 mutant trichome phenotype**

During the analysis of trichome development in CAF-1 mutants we observed that *fas2-1* seedlings had fewer trichomes with supernumerary branches when grown on MS medium containing sucrose than on MS medium alone (data not shown). Carbohydrates control cell cycle activity and are known to influence plant development and organ formation (for review see: [50,51]), but a role in trichome development has not been reported. To test whether sucrose generally influences trichome development, wild type and CAF-1 mutant plants were grown on MS medium with 1% sucrose. Control plants were grown on MS medium containing 1% of the non-metabolizable sugar sorbitol. The number of trichome branches was recorded for the first and second rosette leaves (Fig. 1). In wild type plants of Columbia (Col), Enkheim (En) and Landsberg *erecta* (*Ler*) accessions, sucrose caused a small but consistent shift towards trichomes with fewer branches. This decrease in branch number was statistically significant (chi-squared test,  $p < 0.05$ ) for Col, *fas2-4*, *msi1-as*, En and *fas2-1*. In CAF-1 mutants, sucrose suppressed, at least partially, the supernumerary branch phenotype. The effect was strongest in *msi1-as*, and weakest in *fas1-4*. Mutations of *STI* and *GLABRA3* (*GL3*), which positively regulate trichome branching through the endoreduplication-independent and endoreduplication-dependent pathway, respectively, usually produce trichomes without branching (*sti*) or only a single branching event (*gl3*). Both mutants were unaffected by sucrose (Fig. 1). Thus, sucrose affects branching during trichome differentiation and can partially substitute for loss of CAF-1.



**Figure 1**  
**Sucrose influences trichome morphology in CAF-I mutants.** The overbranching of rosette leaf trichomes in CAF-I mutants is reduced on medium containing sucrose. Trichome branch number was assessed on the first and second primary leaves of wild-types Col (294, 342), En (161, 136) and Ler (119, 449) and the mutants *fas1-4* (223, 171), *fas2-4* (164, 121), *fas1-1* (123, 98), *fas2-1* (66, 124), *gl3-1* (42, 55) and *sti-56* (129, 171). Figures in parentheses represent the number of trichomes analyzed on sorbitol and sucrose, respectively. Note that *gl3-1* produces only a limited number of trichomes on the primary rosette leaves. Plants were grown on MS medium supplied with either 1% sorbitol (unmarked bars) or 1% sucrose (bars highlighted in yellow).

### Sucrose does not generally attenuate CAF-1 mutant phenotypes

It is possible that sucrose generally suppresses CAF-1 mutant phenotypes. Detailed analysis of CAF1 mutants showed, however, that only trichome branching but not other aspects of the CAF-1 mutant phenotype were attenuated by sucrose. In fact, distortion of phyllotaxis was strongly enhanced in *fas2-1* mutants grown on MS medium with sucrose (Fig. 2). The angles between successive leaves were highly irregular, and some primordia did not complete differentiation into leaves but showed weak radialization (data not shown). In addition, internodes elongated and the usual compact appearance of a rosette was lost (Table 1). Furthermore, even after *fas2-1* seedlings were transferred from sucrose medium to soil, about 10% of the plants showed defects in flower development (Fig. 2F, G). These plants produced flowers with missing or severely malformed petals and stamens, and unfused carpels. Additionally, ectopic ovules were sometimes produced at the margin of cauline leaves. Such phenotypes were not observed in control plants. This strong enhancement of the mutant phenotype was not observed in the *fas1-1*, *fas1-4* and *fas2-4* CAF-1 mutant alleles, suggesting that *Ler* is especially sensitive to loss of CAF-1 function when additional factors such as sucrose perturb early development.

### Mutations in CAF-1 partially suppress the kaktus supernumerary branching phenotype

We previously suggested that CAF-1 controls trichome branching via an endoreduplication-independent pathway [44]. To further test this hypothesis, we first analyzed *fas2-1 kak-2* double mutants. *KAKTUS* (*KAK*) encodes a putative HECT-domain E3 ligase [52], and *kak* mutant trichomes have increased ploidy levels and highly supernumerary branches [53]. Characterization of the trichome morphology on rosette leaves of *fas2-1 kak-2* double mutant plants revealed that the two alleles were not epistatic (Fig. 3A). This result is consistent with the hypothesis that CAF-1 controls trichome branching independent of the *KAK*-containing pathway. However, the branching phenotype of *fas2-1 kak-2* trichomes was intermediate to the two single mutants rather than additive, suggesting that *KAK* and CAF-1 can influence each other.

### Loss of CAF1 function restricts DNA endoreduplication in *kak-2* mutants

While *fas2-1* mutants and wild-type plants have the same DNA content of trichome nuclei [44], mutations in *KAK* allow additional rounds of endoreduplication in leaf hair nuclei [53]. However, CAF-1 function is needed for chromatin integrity and has been suggested to be required during cell cycle progression [40]. It was therefore possible that loss of CAF-1 function in the *fas2-1 kak-2* mutant restricts the *kak* endoreduplication potential and thus lim-

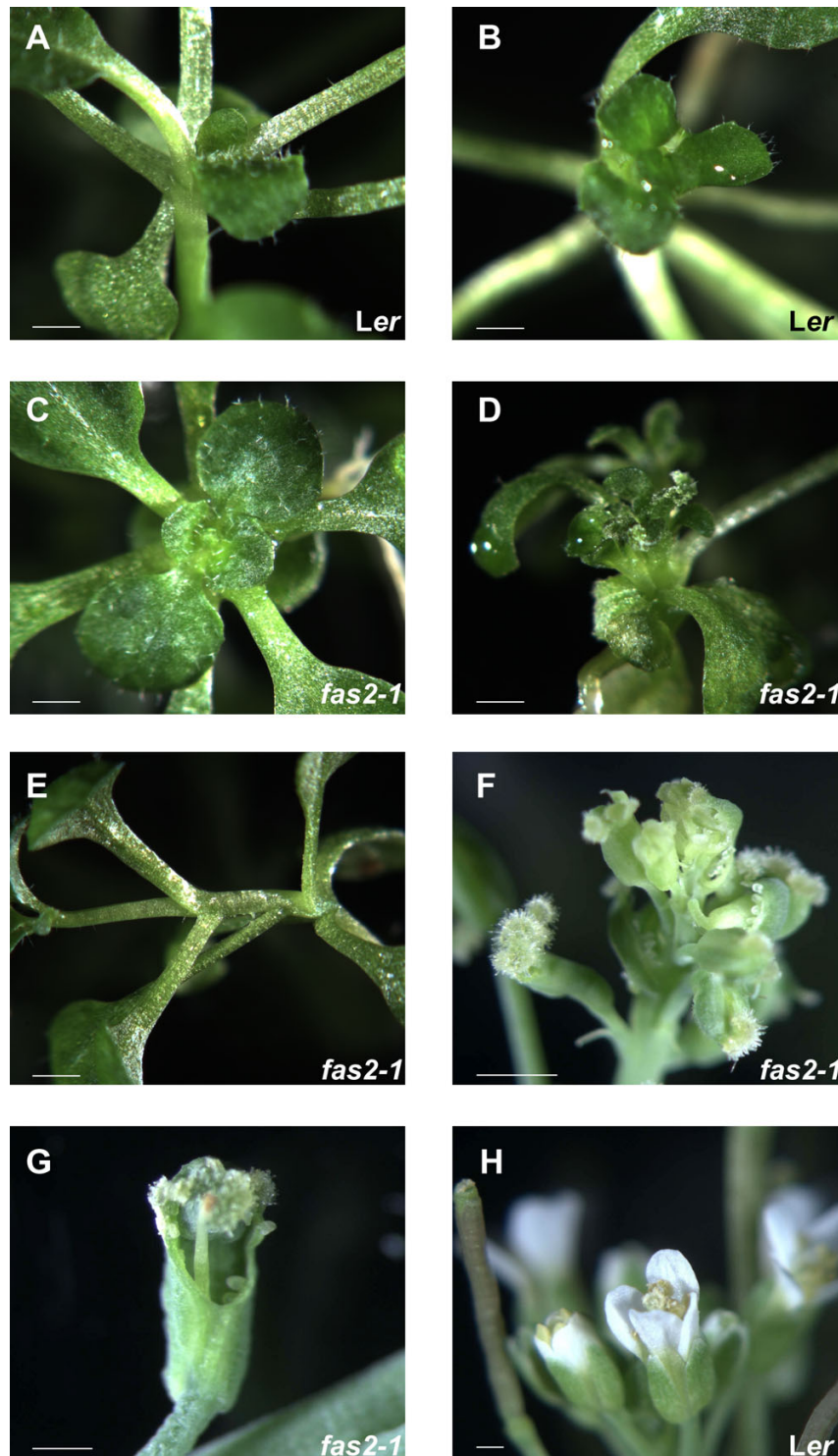
its trichome branching in the *fas2-1 kak-2* mutant. Analysis of the DNA content revealed that trichomes of *fas2-1 kak-2* mutants had on average one third less nuclear DNA than trichomes of *kak-2* single mutants (Fig. 3B). This level was between the numbers of endocycles observed in *fas2-1* and *kak-2*. One possible explanation is that CAF-1 is needed for efficient progression through the endocycle in trichomes. Such a limitation would be consistent with the proposed slower progression through S-phase in CAF-1 mutants [40,54].

### CAF-1 and STICHEL act together in the endoreduplication-independent pathway of trichome differentiation

Analysis of *fas2-1 kak-2* (this work) and *fas2-1 gl3-1* [44] double mutants suggested that *FAS2* acts in a pathway parallel to *KAK* and *GL3* and controls trichome branching in an endoreduplication-independent manner. *STICHEL* (*STI*), a protein with similarity to eubacterial DNA-polymerase III-subunits [49], also controls trichome branching in an endoreduplication-independent pathway. To test whether CAF-1 functions in the *STI*-pathway for trichome differentiation, *fas2-1* was crossed with a strong and a weak *sti* allele. While *sti-56* almost completely abolishes trichome branching, *sti-40* develops many trichomes with one branching event [49,55]. Analysis of trichome morphology of the *fas2 sti* double mutants revealed strong, although not complete epistasis of the *sti-56* null allele over *fas2* (Fig. 4). Interestingly, *fas2* fortifies the weak phenotype of the hypomorphic *sti-40* allele. Together, these results suggest that *FAS2* and *STI* function together in the same pathway for trichome differentiation.

We have reported earlier that *FAS2* controls trichome branching in the context of the CAF-1 complex [44]. To test the hypothesis that CAF-1 and *STI* function in the same pathway, we generated double mutants of *fas1* and *gl3*, *kak* and *sti*. The trichome branching phenotypes of the various double mutants with *fas1* and *fas2* were similar: *fas1-4 gl3-1* exhibited intermediate phenotypes (Fig. 5A) compared with the single mutants, while *fas1-4 sti-40* and *fas1-4 sti-56* again showed strong epistasis of *sti* over *fas1* (Fig. 5B). Furthermore, *fas1-4 kak-2* double mutants had a similar partial suppression of the *kak* phenotype as did the *fas2-1 kak-2* double mutants (Fig. 5B). These results are consistent with our view that CAF-1 and *STI* function in the same pathway of trichome differentiation.

Because *sti* showed epistasis over CAF-1 mutant alleles, it is likely that *STI* acts downstream of CAF-1. One possibility is that CAF-1 is needed for correct *STI* expression during trichome differentiation. To test this hypothesis we measured *STI* mRNA levels in CAF-1 mutants by quantitative RT-PCR. However, *STI* transcript levels were not sig-



**Figure 2**

**Sucrose influences the phenotype of *fas2-1* mutants.** Wild-type Ler and *fas2-1* mutant seedlings were grown on medium supplied with 1% sorbitol or with 1% sucrose. A: Ler grown on sorbitol. B: Ler grown on sucrose. C: *fas2-1* grown on sorbitol. D: *fas2-1* grown on sucrose. Note the severely distorted phyllotaxis. E: *fas2-1* grown on sucrose exhibiting internode elongation. F and G: Flowers of *fas2-1* plants grown for 2.5 weeks on sucrose and later on soil. H: Flowers of a Ler plant grown for 2.5 weeks on sucrose and later on soil. Scale bars: 0.5 mm.

**Table 1: Sucrose strongly alters the phenotype of *fas2-1* but not of the other CAF-1 mutants or wild-type plants.**

Genotype, treatment	Wild-type phenotype		<i>fas</i> mutant phenotype, rosette habit		<i>fas</i> mutant phenotype, elongated internodes	
	Plants	%	Plants	%	Plants	%
En, sorbitol	14	93.3	1	6.7	0	0
En, sucrose	38	97.4	1	2.6	0	0
<i>fas1-1</i> , sorbitol	0	0	17	100	0	0
<i>fas1-1</i> , sucrose	0	0	36	100	0	0
Ler, sorbitol	27	100	0	0	0	0
Ler, sucrose	39	97.5	0	0	1	2.6
<i>fas2-1</i> , sorbitol	0	0	29	100	0	0
<i>fas2-1</i> , sucrose	0	0	26	18.3	116	81.7
Col, sorbitol	38	100	0	0	0	0
Col, sucrose	36	100	0	0	0	0
<i>fas1-4</i> , sorbitol	0	0	35	100	0	0
<i>fas1-4</i> , sucrose	0	0	37	100	0	0
<i>fas2-4</i> , sorbitol	0	0	25	100	0	0
<i>fas2-4</i> , sucrose	0	0	39	100	0	0
<i>msi1-as</i> , sorbitol	0	0	44	100	0	0
<i>msi1-as</i> , sucrose	0	0	42	100	0	0

Shown are the number of seedlings scored in a given category and the percentage.

nificantly increased in *fas1* and *fas2* trichomes (Fig. 6). Similar results were obtained for *STI* expression in *fas1* and *fas2* seedlings and apices (data not shown). These results suggest that CAF-1 affects *STI* function instead of modulating *STI* expression.

### H3.2 is up-regulated in fasciated mutant trichomes

We previously showed that transcription of the gene for replacement histone variant H3.2 was upregulated in *fas1-1*, *fas2-1* and *msi1-as* seedlings [40]. H3.2 is incorporated by a CAF-1 independent pathway into nucleosome of chromatin found mostly in transcriptionally active, less compact chromosome regions (reviewed by [4,56]). We asked whether altered trichome differentiation in CAF-1 mutants was correlated with increased expression of *H3.2* in trichomes. RNA was extracted from trichomes of wild-type, CAF-1 mutants and *msi1-as* plants, and mRNA levels of the *H3.2* gene *At1g13370* were determined by quantitative RT-PCR. This analysis showed that *H3.2* transcript levels were indeed increased by about 100-fold in trichomes of CAF-1 mutants and *msi1-as* plants (Fig. 6B). These results show that loss of CAF-1 function causes increased expression of *H3.2* not only in whole seedlings but also in trichomes. Thus, it is likely that chromatin of CAF-1 mutant trichomes contains increased amounts of the *H3.2* variant histone.

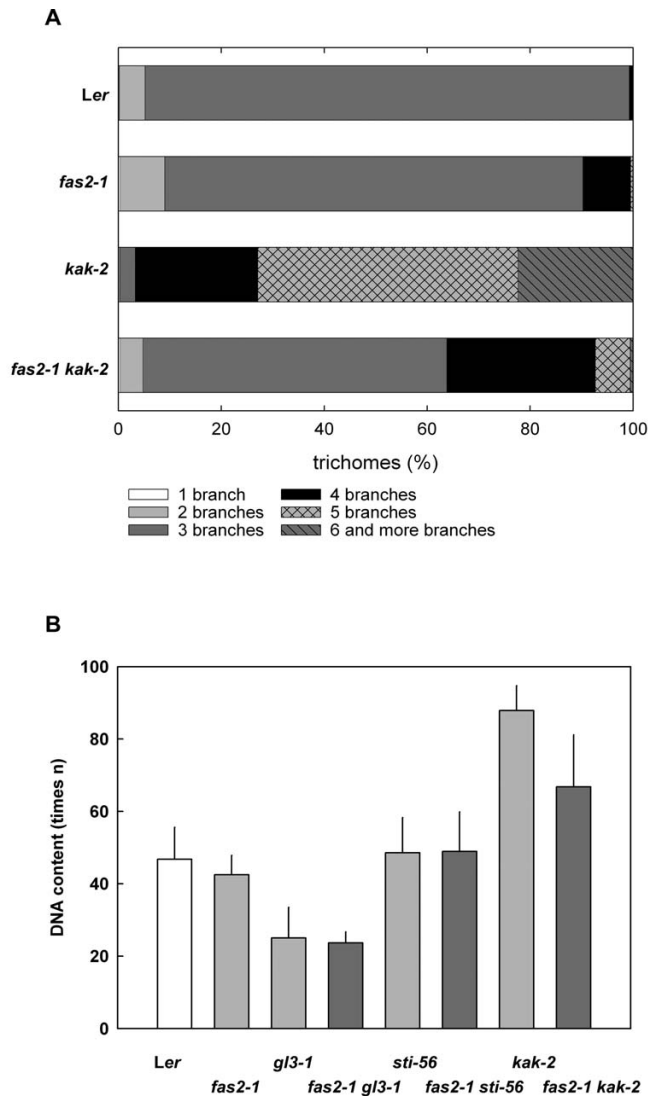
### Discussion

Trichome cell specification and maturation provide a good model system to study cell differentiation in *Arabidopsis*. Analysis of trichome differentiation has revealed a complex gene network that directs and controls the cell determination, specification and differentiation process

[48,57,58]. Here, we report the effects of mutations in the chromatin remodeling complex CAF-1 on trichome development and the genetic interaction of CAF-1 mutant alleles with the trichome regulators *GL3*, *STI* and *KAK*.

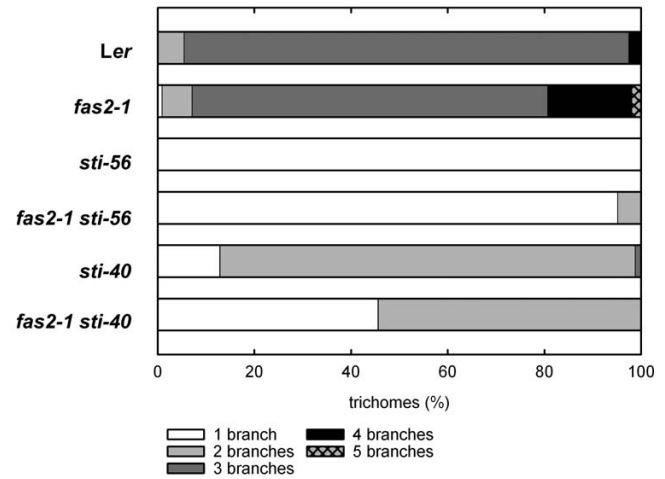
Because CAF-1 mutants have increased trichome branching but normal endoreduplication [44], CAF-1 limits branching during trichome maturation independent of endoreduplication. Genetic evidence suggests that CAF-1 acts parallel to the *GL3-KAK* pathway (Fig. 7), which promotes trichome branching through the control of endoreduplication ([44,59], this work). Nevertheless, CAF-1 is needed for the *GL3-KAK* pathway to function normally, because the *kak* phenotype is partially suppressed in *kak-2 fas2-1* double mutants. The *kak-2 fas2-1* double mutants do not only have less trichome branching but also a lower DNA content than *kak-2* single mutants. These results suggest that CAF-1 is needed for the increased endoreduplication cycles in *kak-2* trichomes. One possible explanation for this observation is that the slower progression through the S phase in the mitotic cell cycle, which we proposed for CAF-1 mutants earlier [40], impedes the increased endoreduplication activity in *kak-2* mutant trichomes. In seedlings and leaves, CAF-1 restricts endoreduplication [34,42-44], and it is possible that lack of CAF-1 triggers additional endocycles in certain cell types with low endoreduplication, but that CAF-1 is also needed to sustain multiple rounds of endocycles in cells types with high endoreduplication such as *kak-2* trichomes.

Exogenous sucrose alleviates the CAF-1 mutant trichome branching phenotype and weakly suppresses trichome branching in wild-type plants. Since the branching pheno-



**Figure 3**  
**Trichome phenotype in *fas2-1 kak-2* double mutants.**  
**A:** Trichome branching in *Ler*, *fas2-1*, *kak-2* and *fas2-1 kak-2*. The double mutants have an intermediate number of branches per trichome compared to the single mutants. **B:** Nuclear DNA content of trichomes from *Ler*, *fas2-1*, *kak-2* and *fas2-1 kak-2* leaves. The DNA content of trichome nuclei of *fas2-1 kak-2* mutants is in between the DNA content of the single mutants.

type of CAF-1 mutants grown on soil, which constitutes a less defined but rich medium, was much more similar to the trichome phenotype of CAF-1 mutants grown on sorbitol than on sucrose (data not shown), we suggest that the suppression of trichome branching results from sucrose signaling rather than a starvation effect. Sucrose is known as a potent signaling molecule that controls gene expression, cell cycle and development [50,51]. However, to our knowledge no effect of sucrose on trichome development

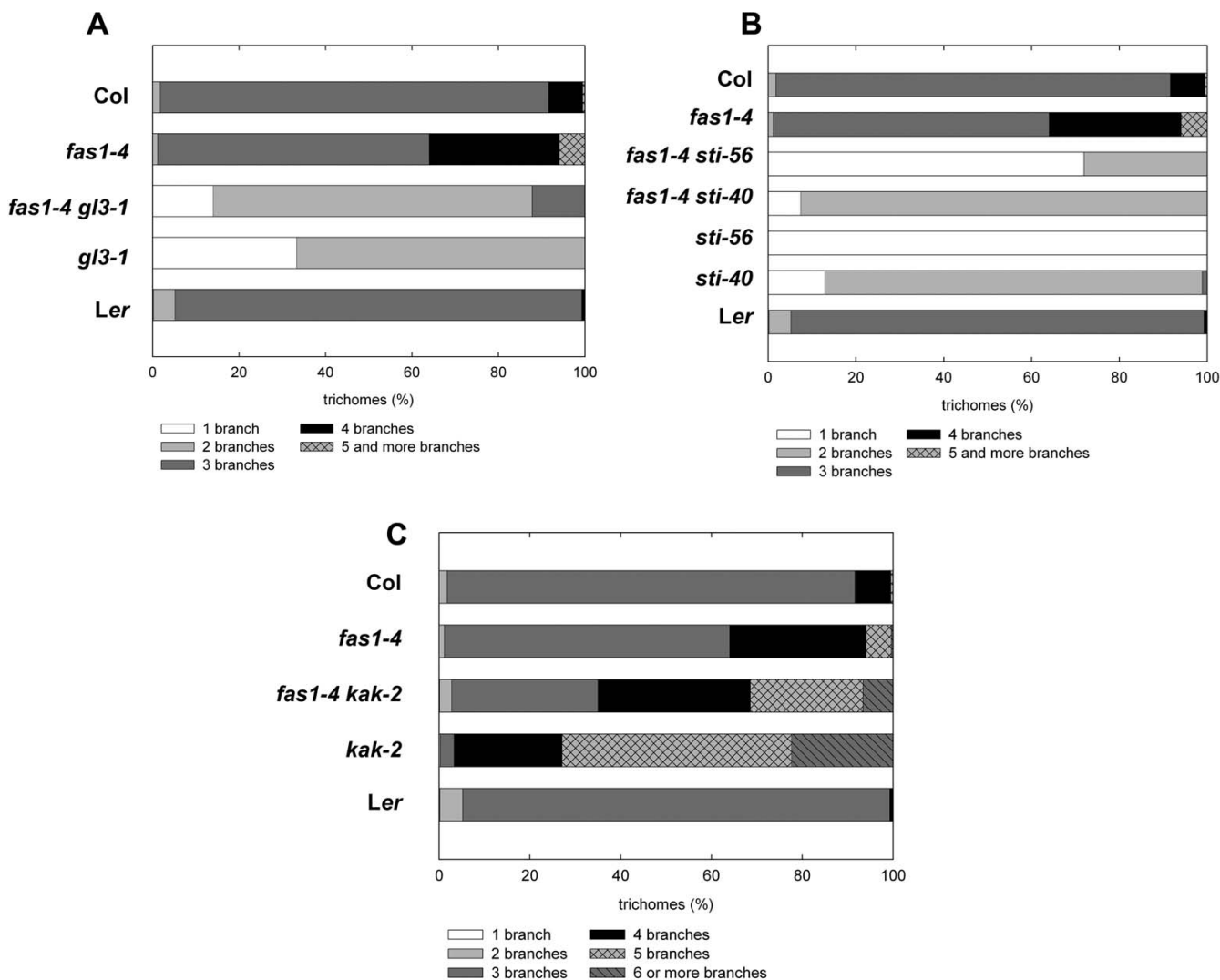


**Figure 4**  
**Mutations in *STI* are epistatic over *fas2*.** Trichome branching in *Ler*, *fas2-1*, *sti-40*, *sti-56*, *fas2-1 sti-40* and *fas2-1 sti-56*. Double mutants between two *sti* alleles and *fas2-1 sti-56* exhibit the same branching phenotype as the two *sti* alleles alone.

has been reported before. Sucrose promotes cell cycle progression [60] and can induce endoreduplication [61], but these effects most likely do not explain the observed reduced trichome branching. More rapid progression through the cell cycle and faster growth on sucrose-containing medium could amplify defects associated with chromatin assembly during S-phase in CAF-1 mutants. We found that sucrose greatly enhances the organ development phenotype of *fas2-1* in *Ler*, and mildly enhances this phenotype of other CAF-1 mutant alleles. We propose that specifically during trichome development, sucrose signals can partially substitute for the CAF-1 requirement by a currently unknown mechanism.

**Conclusion**

Together, we observed (i) that CAF-1 mutants in a wild-type background have increased trichome branching but no increased endoreduplication, (ii) that CAF-1 mutants and *gl3* mutants (defective in the endoreduplication-dependent pathway) show an additive interaction, (iii) that CAF-1 mutants and *sti-56* null mutants (defective in the endoreduplication-independent pathway) show an epistatic interaction, (iv) that CAF-1 mutants enhance the phenotype of the hypomorphic *sti-40* allele (partially defective in the endoreduplication-independent pathway) and (v) that CAF-1 mutants and *kak* mutants (defective in the endoreduplication-dependent pathway) do not show an epistatic interaction. We conclude that the most parsimonious model to explain all results is that CAF-1 acts together with *STI* in an endoreduplication-independent pathway that is parallel to the endoreduplication-depend-

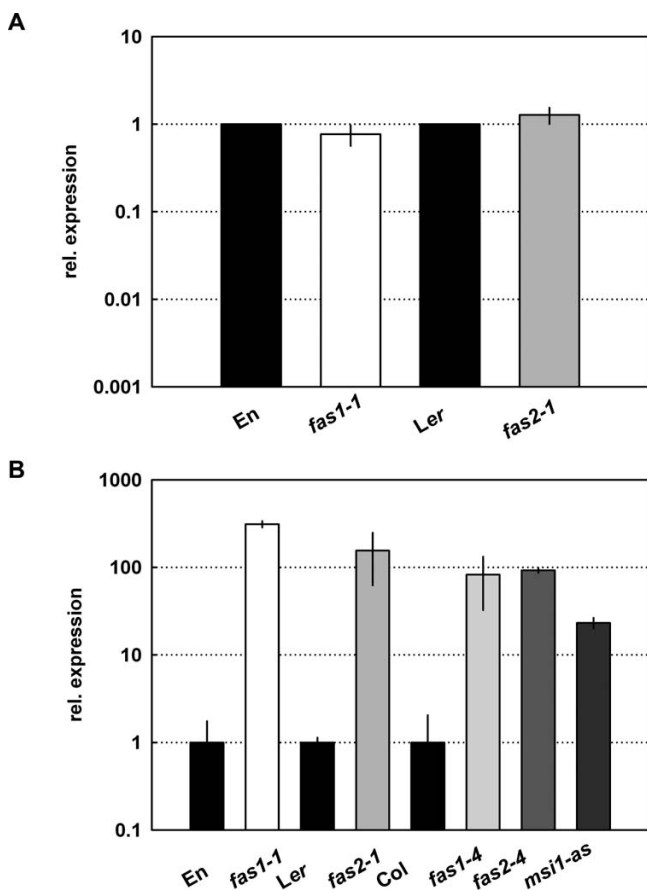


**Figure 5**  
**Genetic interactions of *fas1-4* with *gl3-1*, *sti-40*, *sti-56* and *kak-2*.** A: Trichome branching on rosette leaves of *fas1-4*, *gl3-1* and *fas1-4 gl3-1*. The double mutant is intermediate to the single mutants. B: Trichome branching on rosette leaves of *fas1-4*, *sti-40*, *sti-56*, *fas1-4 sti-40* and *fas1-4 sti-56*. The two *sti* alleles are epistatic over *fas1-4*. C: Trichome branching on rosette leaves of *fas1-4*, *kak-2* and *fas1-4 kak-2*. The strong overbranching phenotype of *kak-2* is partially suppressed by *fas1-4*.

ent pathway of *GL3* and *KAK* (Fig. 7). In addition, while *CAF-1* is not needed for the normal endoreduplication in WT trichomes, *CAF-1* is needed for the extraneous rounds of endoreduplication that occur in *kak* mutants. The genetic evidence places *CAF-1* in the same pathway with *STI*, an activator of trichome branching that does not affect DNA content [49]. *STI* shares sequence similarity with the ATP-binding subunit of eubacterial DNA-polymerase III, but the functional relevance of this similarity has not yet been established, and it is not known if *STI* is a nuclear protein. *CAF-1* does not affect trichome branching by modulating *STI* expression, but acts as a negative regulator in the *STI* pathway (Fig. 7). It is not

known how *CAF-1* can negatively regulate the *STI* pathway. One possibility is that *CAF-1* mediated chromatin assembly and compaction [40] are directly needed for normal trichome maturation. Alternatively, it is possible that *CAF-1* represses expression of other, limiting components of the *STI* pathway. *CAF-1* mutants have increased expression of *H3.2*, which is incorporated into chromatin independently of *CAF-1*. If chromatin of other genes in the *STI* pathway was enriched in *H3.2*, the less stable nucleosomes that are formed as a result could facilitate increased transcription, eventually causing increased activity of the *STI* pathway. In summary, we conclude that *CAF-1* is required to support the exceptionally high





**Figure 6**  
**H3.2 but not STI expression is changed in *fas1-1* and *fas2-1* trichomes.** A: *STI* transcript levels were measured by quantitative RT-PCR in En, Ler, *fas1-1* and *fas2-1*. Expression is shown relative to the corresponding wild type. B: *H3.2* transcript levels were measured by quantitative RT-PCR in En, Ler, Col, *fas1* and *fas2* mutants and *msi1-as*. Expression is shown relative to the corresponding wild type.

endoreduplication of *kak-2* trichomes but not for normal endoreduplication of wild-type trichomes. In wild-type trichomes, CAF-1 restricts the activity of the *STI* pathway.

## Methods

### Plant material and growth conditions

Seeds of Columbia (Col), Landsberg *erecta* (Ler) and Enkheim (En) *Arabidopsis thaliana* wild-type accessions and of *fas1-1* (accession En) [13,35], *fas2-1* (accession Ler) [13,36], *fas1-4* (accession Col) [44], *fas2-4* (accession Col) [44] and *gl3-1* (accession Ler) [62,63] mutants were obtained from the Nottingham Arabidopsis Stock Centre. Note that in addition to the used *fas1-4* allele in Col and described first in [44], another *fas1* allele was described under the same name (*fas1-4*) by Kirik and collaborators in accession C24 [43]. The *msi1-as* line has been described

before [44]. The mutants *kak-2* (accession Ler) [52], *sti-40* (accession Ler) [55] and *sti-56* (accession Ler) [49] were kindly provided by M. Hülkamp. Seeds were sown on sterile basal salts Murashige and Skoog (MS) medium (Duchefa, Brussels, Belgium), which was supplemented with 1% sucrose or 1% sorbitol when required. Plants were analyzed on plates or transferred to soil ("Einheitserde", H. Gilgen optima-Werke, Arlesheim, Switzerland) 10 days after germination. Alternatively, seeds were sown directly on soil. Plants were kept in Conviron growth chambers with mixed cold fluorescent and incandescent light (110 to 140  $\mu\text{mol}/\text{m}^2\text{s}$ ,  $21 \pm 2^\circ\text{C}$ ) under long day (LD, 16 h light) photoperiods or were alternatively raised in green houses.

### Analysis of trichome branching

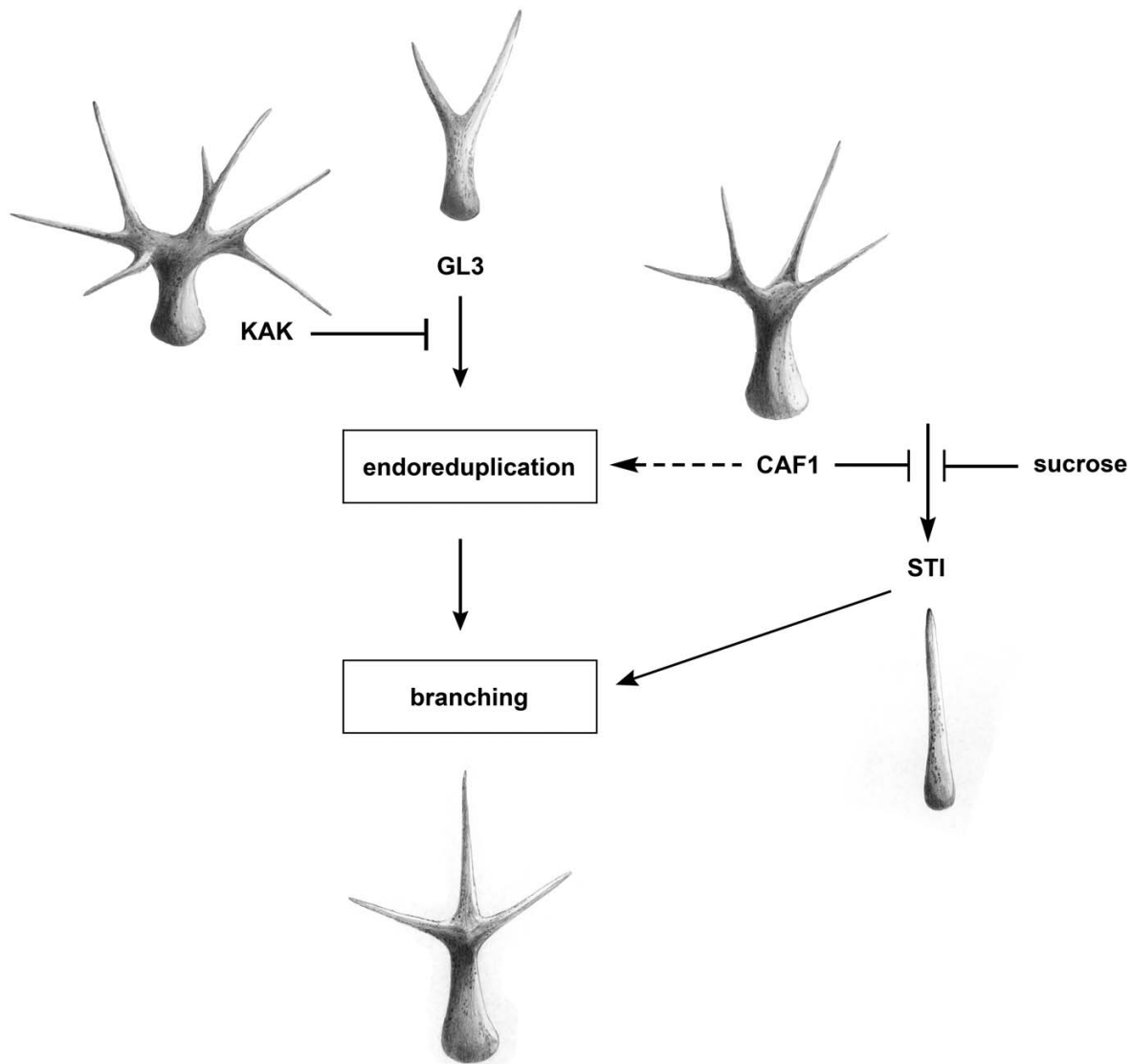
To determine the branching pattern, all trichomes on the adaxial side of the first two leaves of an average of six plants were analyzed.

### Ploidy analysis

Ploidy of trichome nuclei was determined as described [44,64]. Briefly, plant tissue was fixed in FAA (50% ethanol, 5% glacial acetic, 10% formaldehyde) and stained for 90 minutes with 130  $\mu\text{g}/\text{ml}$  DAPI in McIlvaines buffer (60 mM citric acid, 80 mM sodium phosphate, pH 4.1). Samples were washed twice (15 minutes and 60 minutes) with McIlvaines buffer, and mounted in McIlvaines buffer with 50% glycerol. DAPI fluorescence was recorded with a MagnaFire CCD camera (Optronics, Goleta, CA), or with an Apogee Alta U32 CCD camera (Apogee Instruments, Roseville, CA). Images were quantified using ImageJ. Total fluorescence of at least 30 representative nuclei per experiment was determined and calibrated using guard cell nuclei ( $n \geq 30$ ), which are considered to be strictly diploid [64].

### RNA isolation, RT-PCR and Real Time PCR

RNA was extracted from seedlings as previously described [65]. For RT-PCR analysis, 0.4–1  $\mu\text{g}$  total RNA was treated with DNase I. The DNA-free RNA (0.2 – 1.0  $\mu\text{g}$ ) was reverse-transcribed using a RevertAid First Strand cDNA Synthesis Kit according to manufacturer's instructions (Fermentas, Nunningen, Switzerland). Trichomes for RNA extraction were harvested into a few microlitres RNA *later* (Ambion, Austin, TX) and then processed like the other samples. Aliquots of the generated cDNA were used as template for PCR with gene specific primers. For qPCR analysis, the Universal ProbeLibrary system (Roche Diagnostics, Rotkreuz, Switzerland) was used on a 7500 Fast Real-Time PCR instrument (Applied Biosystems, Lincoln, CA). Details of the assays used are in Table 2. Analysis of the results was performed according to the method described by Simon [66].



**Figure 7**  
**Model of CAF-I function in trichome branching.** The initiation of branching is regulated by two independent pathways. In the first pathway, GL3 is a positive regulator and KAK is a negative regulator. In this pathway, endoreduplication triggers trichome branching. In the second pathway, STI is a positive regulator and CAF-I is a negative regulator. Exogenous sucrose can partly substitute the negative function of CAF-I. CAF-I is also required for extensive endoreduplication such as in the *kak-2* mutant. Images represent trichome phenotypes in the respective mutants.

**Table 2: qPCR assays.**

Gene	Forward primer	Reverse primer	Universal Probe Library probe
<i>STI</i> , At2g02480 (target gene)	agctgagtttctctgggaaaa	tttcatctgaacaacaccaac	#9 (Arabidopsis)
<i>H3.2</i> , At1g13370 (target gene)	aaccgtcgtctctcgtga	ttggaatggaagtttacggttc	#99 (Arabidopsis)
<i>PP2A</i> , At1g13320, (reference gene <sup>1)</sup> )	ggagagtgactgtgttgagca	cattcaccagctgaaagtgc	#82 (Arabidopsis)

<sup>1)</sup> [67]

Shown are the analyzed genes, sequences of the primers and the identifier of the corresponding Universal ProbeLibrary probes.

## Authors' contributions

VE performed plant analysis, carried out the molecular and genetic studies and drafted the manuscript. LH participated in the study design and helped to write the manuscript. WG helped to write the manuscript.

## Acknowledgements

We thank Claudia Köhler and Cristina Alexandre for critical reading of the manuscript, and Bartosz Urbaniak for technical help with qPCR. Work in the authors' laboratory is supported by SNF project 3100AO-116060 and ETH project TH-16/05-2.

## References

- Ebert A, Lein S, Schotta G, Reuter G: **Histone modification and the control of heterochromatic gene silencing in Drosophila.** *Chromosome Res* 2006, **14**:377-392.
- Santoro R, De Lucia F: **Many players, one goal: how chromatin states are inherited during cell division.** *Biochem Cell Biol* 2005, **83**:332-343.
- Reyes JC, Hennig L, Gruissem W: **Chromatin-remodeling and memory factors. New regulators of plant development.** *Plant Physiol* 2002, **130**:1090-1101.
- Loyola A, Almouzni G: **Histone chaperones, a supporting role in the limelight.** *Biochim Biophys Acta* 2004, **1677**:3-11.
- Groth A, Rocha W, Verreault A, Almouzni G: **Chromatin challenges during DNA replication and repair.** *Cell* 2007, **128**:721-733.
- Stillman B: **Chromatin assembly during SV40 DNA replication in vitro.** *Cell* 1986, **45**:555-565.
- Smith S, Stillman B: **Purification and characterization of CAF-I, a human cell factor required for chromatin assembly during DNA replication in vitro.** *Cell* 1989, **58**:15-25.
- Kaufman PD, Kobayashi R, Stillman B: **Ultraviolet radiation sensitivity and reduction of telomeric silencing in *Saccharomyces cerevisiae* cells lacking Chromatin Assembly Factor-I.** *Genes Dev* 1997, **11**:345-357.
- Verreault A, Kaufman PD, Kobayashi R, Stillman B: **Nucleosome assembly by a complex of CAF-I and acetylated histones H3/H4.** *Cell* 1996, **87**:95-104.
- Bulger M, Ito T, Kamakaka RT, Kadonaga JT: **Assembly of regularly spaced nucleosome arrays by Drosophila chromatin assembly factor I and a 56-kDa histone-binding protein.** *Proc Natl Acad Sci USA* 1995, **92**:11726-11730.
- Kamakaka RT, Bulger M, Kaufman PD, Stillman B, Kadonaga JT: **Post-replicative chromatin assembly by Drosophila and human Chromatin Assembly Factor I.** *Mol Cell Biol* 1996, **16**:810-817.
- Tyler JK, Bulger M, Kamakaka RT, Kobayashi R, Kadonaga JT: **The p55 subunit of Drosophila chromatin assembly factor I is homologous to a histone deacetylase-associated protein.** *Mol Cell Biol* 1996, **16**:6149-6159.
- Kaya H, Shibahara KI, Taoka KI, Iwabuchi M, Stillman B, Araki T: **FASCIATA genes for chromatin assembly factor-I in Arabidopsis maintain the cellular organization of apical meristems.** *Cell* 2001, **104**:131-142.
- Ach RA, Taranto P, Gruissem W: **A conserved family of WD-40 proteins binds to the retinoblastoma protein in both plants and animals.** *Plant Cell* 1997, **9**:1595-1606.
- Enomoto S, McCune-Zierath PD, Gerami-Nejad M, Sanders MA, Berman J: **RLF2, a subunit of yeast chromatin assembly factor-I, is required for telomeric chromatin function in vivo.** *Genes Dev* 1997, **11**:358-370.
- Monson EK, de Bruin D, Zakian VA: **The yeast Cacl protein is required for the stable inheritance of transcriptionally repressed chromatin at telomeres.** *Proc Natl Acad Sci USA* 1997, **94**:13081-13086.
- Enomoto S, Berman J: **Chromatin Assembly Factor I contributes to the maintenance, but not the re-establishment, of silencing at the yeast silent mating loci.** *Genes Dev* 1998, **12**:219-232.
- Smith JS, Caputo E, Boeke JD: **A genetic screen for ribosomal DNA silencing defects identifies multiple DNA replication and chromatin-modulating factors.** *Mol Cell Biol* 1999, **19**:3184-3197.
- Taddei A, Roche D, Sibarita JB, Turner BM, Almouzni G: **Duplication and maintenance of heterochromatin domains.** *J Cell Biol* 1999, **147**:1153-1166.
- Game JC, Kaufman PD: **Role of *Saccharomyces cerevisiae* Chromatin Assembly Factor-I in repair of ultraviolet radiation damage in vivo.** *Genetics* 1999, **151**:485-497.
- Ahmad K, Henikoff S: **The histone variant H3.3 marks active chromatin by replication-independent nucleosome assembly.** *Mol Cell* 2002, **9**:1191-1200.
- Tagami H, Ray-Gallet D, Almouzni G, Nakatani Y: **Histone H3.1 and H3.3 complexes mediate nucleosome assembly pathways dependent or independent of DNA synthesis.** *Cell* 2004, **116**:51-61.
- Mito Y, Henikoff JG, Henikoff S: **Genome-scale profiling of histone H3.3 replacement patterns.** *Nat Genet* 2005, **37**:1090-1097.
- Henikoff S, Ahmad K: **Assembly of variant histones into chromatin.** *Annu Rev Cell Dev Biol* 2005, **21**:133-153.
- Jin C, Felsenfeld G: **Nucleosome stability mediated by histone variants H3.3 and H2A.Z.** *Genes Dev* 2007, **21**:1519-1529.
- Houlard M, Berlivet S, Probst AV, Quivy JP, Hery P, Almouzni G, Gerard M: **CAF-I is essential for heterochromatin organization in pluripotent embryonic cells.** *PLoS Genet* 2006, **2**:e181.
- Tchenio T, Casella JF, Heidmann T: **A truncated form of the human CAF-I p150 subunit impairs the maintenance of transcriptional gene silencing in mammalian cells.** *Mol Cell Biol* 2001, **21**:1953-1961.
- Hoek M, Stillman B: **Chromatin Assembly Factor I is essential and couples chromatin assembly to DNA replication in vivo.** *Proc Natl Acad Sci USA* 2003, **100**:12183-12188.
- Nabatyan A, Krude T: **Silencing of Chromatin Assembly Factor I in human cells leads to cell death and loss of chromatin assembly during DNA synthesis.** *Mol Cell Biol* 2004, **24**:2853-2862.
- Ye X, Franco AA, Santos H, Nelson DM, Kaufman PD, Adams PD: **Defective S phase chromatin assembly causes DNA damage, activation of the S phase checkpoint, and S phase arrest.** *Mol Cell* 2003, **11**:341-351.
- Quivy JP, Grandi P, Almouzni G: **Dimerization of the largest subunit of Chromatin Assembly Factor I: importance in vitro and during *Xenopus* early development.** *EMBO J* 2001, **20**:2015-2027.
- Song Y, He F, Xie G, Guo X, Xu Y, Chen Y, Liang X, Stagljar I, Egli D, Ma J, Jiao R: **CAF-I is essential for Drosophila development and involved in the maintenance of epigenetic memory.** *Dev Biol* 2007, **311**:213-222.
- Fischer S, Prykhodzhiy S, Rau MJ, Neumann CJ: **Mutation of zebrafish *caf-1b* results in S phase arrest, defective differentiation, and p53-mediated apoptosis during organogenesis.** *Cell Cycle* 2007, **6**:2962-2969.
- Ramirez-Parra E, Gutierrez C: **E2F regulates FASCIATA1, a chromatin assembly gene whose loss switches on the endocycle and activates gene expression by changing the epigenetic status.** *Plant Physiol* 2007, **144**:105-120.
- Reinholz E: **Radiation induced mutants showing changed inflorescence characteristics.** *Arab Inf Serv* 1966, **3**:19-20.
- Leyser H, Furner I: **Characterisation of three shoot apical meristem mutants of *Arabidopsis thaliana*.** *Development* 1992, **116**:397-403.
- Worsdell W: **Fasciation: its meaning and origin.** *New Phytol* 1905, **4**:55-74.
- Köhler C, Hennig L, Bouveret R, Gheyselinck J, Grossniklaus U, Gruissem W: **Arabidopsis MSII is a component of the MEA/FIE Polycomb group complex and required for seed development.** *EMBO J* 2003, **22**:4804-4814.
- Leroy O, Hennig L, Breuninger H, Laux T, Köhler C: **Polycomb group proteins function in the female gametophyte to determine seed development in plants.** *Development* 2007, **134**:3639-3648.
- Schönrock N, Exner V, Probst A, Gruissem W, Hennig L: **Functional genomic analysis of CAF-I mutants in *Arabidopsis thaliana*.** *J Biol Chem* 2006, **281**:9560-9568.
- Ono T, Kaya H, Takeda S, Abe M, Ogawa Y, Kato M, Kakutani T, Mittelsten Scheid O, Araki T, Shibahara K: **Chromatin Assembly Fac-**

- tor I ensures the stable maintenance of silent chromatin states in Arabidopsis.** *Genes Cells* 2006, **11**:153-162.
42. Endo M, Ishikawa Y, Osakabe K, Nakayama S, Kaya H, Araki T, Shibahara K, Abe K, Ichikawa H, Valentine L, Hohn B, Toki S: **Increased frequency of homologous recombination and T-DNA integration in Arabidopsis CAF-I mutants.** *EMBO J* 2006, **25**:5579-5590.
  43. Kirik A, Pecinka A, Wendeler E, Reiss B: **The Chromatin Assembly Factor subunit FASCIATA1 is involved in homologous recombination in plants.** *Plant Cell* 2006, **18**:2431-2442.
  44. Exner V, Taranto P, Schönrock N, Gruißem W, Hennig L: **Chromatin assembly factor CAF-I is required for cellular differentiation during plant development.** *Development* 2006, **133**:4163-4172.
  45. Johnson H: **Plant pubescence: an ecological perspective.** *Bot Rev* 1975, **41**:233-258.
  46. Mauricio R, Rausher M: **Experimental manipulation of putative selective agents provides evidence for the role of natural enemies in the evolution of plant defense.** *Evolution* 1997, **51**:1435-1444.
  47. Schellmann S, Hülskamp M, Uhrig J: **Epidermal pattern formation in the root and shoot of Arabidopsis.** *Biochem Soc Trans* 2007, **35**:146-148.
  48. Schellmann S, Hülskamp M: **Epidermal differentiation: trichomes in Arabidopsis as a model system.** *Int J Dev Biol* 2005, **49**:579-584.
  49. Ilgenfritz H, Bouyer D, Schnittger A, Mathur J, Kirik V, Schwab B, Chua NH, Jürgens G, Hülskamp M: **The Arabidopsis STICHEL gene is a regulator of trichome branch number and encodes a novel protein.** *Plant Physiol* 2003, **131**:643-655.
  50. Gibson SI: **Control of plant development and gene expression by sugar signaling.** *Curr Opin Plant Biol* 2005, **8**:93-102.
  51. Rolland F, Baena-Gonzalez E, Sheen J: **Sugar sensing and signaling in plants: conserved and novel mechanisms.** *Annu Rev Plant Biol* 2006, **57**:675-709.
  52. Downes BP, Stupar RM, Gingerich DJ, Vierstra RD: **The HECT ubiquitin-protein ligase (UPL) family in Arabidopsis: UPL3 has a specific role in trichome development.** *Plant J* 2003, **35**:729-742.
  53. El Refy A, Perazza D, Zekraoui L, Valay JG, Bechtold N, Brown S, Hülskamp M, Herzog M, Bonneville JM: **The Arabidopsis KAKTUS gene encodes a HECT protein and controls the number of endoreduplication cycles.** *Mol Genet Genomics* 2003, **270**:403-414.
  54. Takami Y, Ono T, Fukagawa T, Shibahara K, Nakayama T: **Essential role of Chromatin Assembly Factor-I-mediated rapid nucleosome assembly for DNA replication and cell division in vertebrate cells.** *Mol Biol Cell* 2007, **18**:129-141.
  55. Folkers U, Berger J, Hülskamp M: **Cell morphogenesis of trichomes in Arabidopsis: differential control of primary and secondary branching by branch initiation regulators and cell growth.** *Development* 1997, **124**:3779-3786.
  56. Loyola A, Almouzni G: **Marking histone H3 variants: how, when and why?** *Trends Biochem Sci* 2007, **32**:425-433.
  57. Perazza D, Herzog M, Hülskamp M, Brown S, Dorne AM, Bonneville JM: **Trichome cell growth in Arabidopsis thaliana can be derepressed by mutations in at least five genes.** *Genetics* 1999, **152**:461-476.
  58. Marks MD: **Molecular genetic analysis of trichome development in Arabidopsis.** *Annu Rev Plant Physiol Plant Mol Biol* 1997, **48**:137-163.
  59. Hülskamp M: **Plant trichomes: a model for cell differentiation.** *Nat Rev Mol Cell Biol* 2004, **5**:471-480.
  60. Riou-Khamlichi C, Menges M, Healy JM, Murray JA: **Sugar control of the plant cell cycle: differential regulation of Arabidopsis D-type cyclin gene expression.** *Mol Cell Biol* 2000, **20**:4513-4521.
  61. Pijnacker L, Ferwerda M: **Effects of sucrose on polyploidization in early callus cultures of Solanum tuberosum.** *Plant Cell* 1990, **21**:153-17.
  62. Koornneef M, Dellaert LW, Veij van der: **EMS- and radiation-induced mutation frequencies at individual loci in Arabidopsis thaliana (L.) Heynh.** *Mutat Res* 1982, **93**:109-123.
  63. Payne CT, Zhang F, Lloyd AM: **GL3 encodes a bHLH protein that regulates trichome development in Arabidopsis through interaction with GLI and TTGI.** *Genetics* 2000, **156**:1349-1362.
  64. Walker JD, Oppenheimer DG, Conciene J, Larkin JC: **SIAMESE, a gene controlling the endoreduplication cell cycle in Arabidopsis thaliana trichomes.** *Development* 2000, **127**:3931-3940.
  65. Hennig L, Taranto P, Walsler M, Schönrock N, Gruißem W: **Arabidopsis MSI1 is required for epigenetic maintenance of reproductive development.** *Development* 2003, **130**:2555-2565.
  66. Simon P: **Q-Gene: processing quantitative real-time RT-PCR data.** *Bioinformatics* 2003, **19**:1439-1440.
  67. Czechowski T, Stitt M, Altmann T, Udvardi MK, Scheible WR: **Genome-wide identification and testing of superior reference genes for transcript normalization in Arabidopsis.** *Plant Physiol* 2005, **139**:5-17.

Publish with **BioMed Central** and every scientist can read your work free of charge

"BioMed Central will be the most significant development for disseminating the results of biomedical research in our lifetime."

Sir Paul Nurse, Cancer Research UK

Your research papers will be:

- available free of charge to the entire biomedical community
- peer reviewed and published immediately upon acceptance
- cited in PubMed and archived on PubMed Central
- yours — you keep the copyright

Submit your manuscript here:  
[http://www.biomedcentral.com/info/publishing\\_adv.asp](http://www.biomedcentral.com/info/publishing_adv.asp)

