

## Factors Controlling the Distribution of Archaeal Tetraethers in Terrestrial Hot Springs<sup>∇</sup>

Ann Pearson,<sup>1\*</sup> Yundan Pi,<sup>1,2,3</sup> Weidong Zhao,<sup>3</sup> WenJun Li,<sup>4</sup> Yiliang Li,<sup>3†</sup> William Inskeep,<sup>5</sup>  
Anna Perevalova,<sup>6</sup> Christopher Romanek,<sup>3</sup> Shuguang Li,<sup>2</sup> and Chuanlun L. Zhang<sup>3\*</sup>

Department of Earth and Planetary Sciences, Harvard University, Cambridge, Massachusetts<sup>1</sup>; School of Earth and Space Sciences, the University of Sciences and Technology of China, Hefei, China<sup>2</sup>; Savannah River Ecology Laboratory, University of Georgia, Aiken, South Carolina<sup>3</sup>; Yunnan Institute of Microbiology, Yunnan University, Kunming 650091, China<sup>4</sup>; Thermal Biology Institute and Department of Land Resources and Environmental Sciences, Montana State University, Bozeman, Montana<sup>5</sup>; and Institute of Microbiology, Russian Academy of Sciences, Moscow, Russia<sup>6</sup>

Received 30 October 2007/Accepted 10 March 2008

**Glycerol dialkyl glycerol tetraethers (GDGTs) found in hot springs reflect the abundance and community structure of *Archaea* in these extreme environments. The relationships between GDGTs, archaeal communities, and physical or geochemical variables are underexamined to date and when reported often result in conflicting interpretations. Here, we examined profiles of GDGTs from pure cultures of *Crenarchaeota* and from terrestrial geothermal springs representing a wide distribution of locations, including Yellowstone National Park (United States), the Great Basin of Nevada and California (United States), Kamchatka (Russia), Tengchong thermal field (China), and Thailand. These samples had temperatures of 36.5 to 87°C and pH values of 3.0 to 9.2. GDGT abundances also were determined for three soil samples adjacent to some of the hot springs. Principal component analysis identified four factors that accounted for most of the variance among nine individual GDGTs, temperature, and pH. Significant correlations were observed between pH and the GDGTs crenarchaeol and GDGT-4 (four cyclopentane rings, *m/z* 1,294); pH correlated positively with crenarchaeol and inversely with GDGT-4. Weaker correlations were observed between temperature and the four factors. Three of the four GDGTs used in the marine TEX<sub>86</sub> paleotemperature index (GDGT-1 to -3, but not crenarchaeol isomer) were associated with a single factor. No correlation was observed for GDGT-0 (acyclic caldarchaeol): it is effectively its own variable. The biosynthetic mechanisms and exact archaeal community structures leading to these relationships remain unknown. However, the data in general show promise for the continued development of GDGT lipid-based physicochemical proxies for archaeal evolution and for paleo-ecology or paleo-climate studies.**

Isoprenoid glycerol dialkyl glycerol tetraethers (GDGTs) are widely used as taxonomic (12, 13, 27, 28) and physicochemical (3, 32, 45, 50, 54, 61; E. S. Boyd, A. Pearson, Y. Pi, W. Li, C. L. Zhang, and G. G. Geesey, unpublished data) biomarkers to study present (1, 3, 24, 35) or ancient (30, 37, 43) communities of *Archaea*. GDGTs have biphytanyl core lipids with zero to as many as four cyclopentyl rings and zero or one cyclohexyl ring on each side chain (41). Some studies of both pure cultures of *Crenarchaeota* (11, 16, 50, 51; Boyd et al., unpublished) and of environmental samples (39, 42, 43, 58) show that the number of rings increases with growth temperature, while other studies focusing on different species or environmental settings show that this relationship is weaker or apparently absent (6, 36, 45, 61). Because the increased number of cyclopentyl rings also has been shown experimentally (14, 32; Boyd et al., unpublished) and through surveys (17, 32, 57; Boyd et al.,

unpublished) to be a response to increased acidity (lower pH), it is likely that multiple variables play significant roles when adjusting archaeal membranes to cope with environmental and energetic stresses (52, 53).

The cyclohexane ring-containing GDGT, crenarchaeol, is widespread in the environment (e.g., see references 18, 24, 31, 36, 39, 41, 46, 56, and 61) and appears to be a biomarker exclusively for *Crenarchaeota* (42, 46). It originally was proposed to be specific for nonthermophilic species found in marine systems (46). More recently, the environmental niches in which crenarchaeol is found have been expanded to include lacustrine waters (39), soils (31, 56), and terrestrial geothermal environments (36, 61). The formation of a unique cyclohexane ring distinguishes crenarchaeol from the other GDGTs, and it was proposed that this ring reflects physiological and evolutionary adaptation to low-temperature marine environments (30, 46). Thus, the reports of crenarchaeol in geothermal springs at temperatures above 40°C were surprising (36, 61) and have been questioned (45). The recent cultivation, however, of the hyperthermophile "*Candidatus Nitrosocaldus yellowstonii*" (10) shows that synthesis of crenarchaeol can be abundant in organisms thriving at high temperatures.

Multivariable control of community and lipid compositions results in distributions of environmental GDGTs that can be difficult to interpret. Examination of hot spring data using

\* Corresponding author. Mailing address for A. Pearson: 20 Oxford St., Cambridge, MA 02138. Phone: (617) 384-8392. Fax: (617) 496-4387. E-mail: pearson@eps.harvard.edu. Mailing address for C. L. Zhang: Savannah River Ecology Laboratory, University of Georgia, Aiken, SC 29802. Phone: (803) 725-5299. Fax: (803) 725-3309. E-mail: czsrel@uga.edu.

† Present address: Department of Earth Sciences, The University of Hong Kong, Hong Kong, China.

<sup>∇</sup> Published ahead of print on 4 April 2008.



property-property plots yields inconsistent results among different sets of samples. It was reported that the ring index (weighted number of cyclopentyl rings) does not correlate (36) or only weakly correlates (45, 61) with temperature. In other cases, this index does (36) or does not (61) correlate with alkalinity. Previous data suggest that the abundance of cyclopentyl rings correlates inversely with pH (32, 56), but while this has been shown in pure culture (Boyd et al., unpublished), it has only been examined on a limited basis within an environmental context (32, 45, 61; Boyd et al., unpublished).

For a better understanding of how these competing variables control the distribution of archaeal GDGTs, we integrated our previously published data from terrestrial hot springs (36, 61) with 36 new analyses spanning a wider diversity of geochemical and geographic samples. Principal component analysis (PCA) and cluster analysis are effective methods for analyzing multivariate data to determine the number of significant controlling factors or variables. Here we adopted these methods to study the relationships between GDGTs, temperature, and pH, as well as the relationships among individual GDGTs themselves. Exploration of the internal connections between variables reveals deeper insight into the links between archaeal GDGT profiles and geographic and geochemical parameters, and we speculate that in some cases, these parameters could be universal.

#### MATERIALS AND METHODS

**Source of samples and data.** Forty-three samples of biomass (bacterial mats on sediment surfaces, floating microbial mat communities, and/or mineralized deposits overgrown with biofilm) were collected from hot spring locations in North America and Asia. Seventeen were from the Great Basin region (Nevada and California); 12 were from Yellowstone National Park, United States; 11 were from Kamchatka, Russia; 2 were from Tengchong, China; and one was from Thailand. Relative abundances of GDGTs were measured for each hot spring sample, and in addition, eight pure cultures of *Crenarchaeota* and three soil samples from locations adjacent to selected hot springs were measured. Temperature and pH were measured for each hot spring at the sampling location. Among the 54 samples discussed here, 18 were reported previously (36, 61), while 36 represent new data (Table 1).

**Archaeal lipid extraction and HPLC-MS analysis.** Approximately 10 g of each sample was extracted following a modified Bligh-Dyer (2) lipid extraction procedure. Samples were sonicated in phosphate buffer (pH 7.5), CH<sub>3</sub>OH, and CHCl<sub>3</sub> (0.8:1:1) and partitioned into the organic phase by further addition of H<sub>2</sub>O and CHCl<sub>3</sub> to a final ratio of 1.8:1:2. The resulting total lipid extract (TLE) was dried under N<sub>2</sub> (gas phase), and 2 ml of 95:5 (vol/vol) methanol and hydrochloric acid was used for transesterification and hydrolysis (70°C, 2 h) to cleave acid-labile polar head groups of GDGTs and phospholipid fatty acids. Transesterified TLE was partitioned by addition of 1:1 H<sub>2</sub>O-CH<sub>2</sub>Cl<sub>2</sub>, and the reconcentrated TLE was passed through a C<sub>18</sub> solid-phase extraction column to yield three fractions (polar, GDGT-rich, and nonpolar). The GDGT fraction was used for subsequent high-performance liquid chromatography-mass spectrometry (HPLC-MS) analysis.

The intact GDGTs were identified with an Agilent 1100 series high-performance liquid chromatograph with atmospheric pressure chemical ionization-MS, using published methods (19, 20, 23, 36) and a Prevaal Cyano column (2.1 by 150 mm, 3- $\mu$ m particle size). Conditions for atmospheric pressure chemical ionization-MS were nebulizer pressure of 60 lb/in<sup>2</sup>, drying gas flow of 6.0 liters/min at 350°C, vaporizer temperature of 375°C, voltage of 3 kV, and corona of 5  $\mu$ A. Spectra were scanned over the mass range from 1,000 to 1,350 (for branched index of bacterial tetraethers [BIT] plus GDGT) or from 1,250 to 1,350 (for GDGT only). Relative abundances of GDGTs were determined by integration of *m/z* 1,302, 1,300, 1,298, 1,296, 1,294, 1,292, and 1,290 single-ion chromatograms (SIC) and compared to values from integrated total-ion chromatograms (TIC) when possible (23). Crenarchaeol (4 cyclopentanes plus 1 cyclohexane; *m/z* 1,292) and GDGT-4 (4 cyclopentanes; *m/z* 1,294) coelute under these conditions;

TABLE 2. Total variance loading for each of the 11 variables as represented by factors A to D

Variable <sup>a</sup>	Result for factor <sup>b</sup> :				<i>h</i> <sup>2</sup> = $\Sigma(r^2)$
	A	B	C	D	
Temp (°C)	<b>0.64</b>	0.23	0.34	0.34	0.70
pH	<b>-0.80</b>	0.16	0.22	0.04	0.72
GDGT-0	-0.13	<b>0.91</b>	0.13	0.25	0.92
GDGT-1	0.03	0.40	0.04	<b>0.88</b>	0.94
GDGT-2	0.29	0.14	0.20	<b>0.87</b>	0.89
GDGT-3	0.59	-0.30	0.25	<b>0.64</b>	0.91
GDGT-4	<b>0.86</b>	-0.38	0.18	-0.03	0.92
GDGT-5†	<b>-0.86</b>	-0.04	0.16	-0.43	0.95
GDGT-5‡	<b>-0.82</b>	-0.26	0.08	-0.18	0.78
GDGT-5'	0.49	0.05	<b>-0.60</b>	-0.49	0.84
GDGT-6	0.07	-0.12	<b>-0.92</b>	-0.13	0.89

<sup>a</sup> GDGT-5†, crenarchaeol; GDGT-5‡, crenarchaeol isomer; GDGT-5', GDGT with five cyclopentyl rings.

<sup>b</sup> The best correlations between variables and factors are in boldface, while those among them that are significant ( $r^2 > 0.5$ ) are underlined.

their respective abundances were decoupled by mass spectral ion fragment balance as described previously (61).

**Cluster analysis of GDGTs.** Statistical analyses were performed in the R program (freeware; <http://cran.r-project.org/>) (33), following the approach of Turich et al. (49). Relative abundance data were imported into R. The function *vegdist* using the Bray-Curtis distance measure in the *vegan* package was performed to compute the dissimilarity matrix, and the *agnes* function in the *cluster* package was run using a flexible beta method to generate the agglomerative hierarchical clustering tree. Bias in clustering can be caused by the artificial conclusion that a particular GDGT is absent from a sample, when in fact it is merely below detection limits. Here we attempted to minimize any such bias by limiting the analysis to samples in which a minimum of five (and usually six or seven) of the nine GDGTs could be identified, with one exception (Monarch Geyser; just three GDGTs). The same criterion was not applied to the cultured samples, as we believe the limited GDGT distributions observed in these samples are real (6, 11, 16, 32, 50, 51; Boyd et al., unpublished).

**PCA.** For PCA, the eigenvectors and eigenvalues were extracted from a covariance matrix calculated from standardized data. Community ( $h^2$ ), or the percentage of variance explained by summing the factors, was calculated, and application of Jolliffe's modified Kaiser criterion (25), as well as Cattell's scree test (9), suggested that four significant factors be retained. Varimax rotation was applied to maximize the variable loadings onto the four designated factors (26). Standardized, rotated factor loadings (*r* values) for each of the 11 variables on the four, factors, A to D, were computed (Table 2). The factor scores for all individual samples as mapped onto the four factors also were determined. All calculations were performed in Matlab; code for Varimax rotation was obtained from <http://w3eos.whoi.edu/12.747/>.

#### RESULTS

**GDGTs in hot springs and surrounding soils.** GDGTs measured in hot springs and pure culture samples showed many different patterns (Fig. 1 and Table 1). The greatest variety among GDGT profiles was seen at the highest temperatures (Fig. 1a to d). Samples from >80°C could be observed to have relatively less (Fig. 1a) or relatively more (Fig. 1d) of each GDGT with successively more rings. The sample in Fig. 1d geographically was from Yellowstone, while the one in Fig. 1a was from the Great Basin (61). Microbial communities from high temperatures also sometimes were observed to have a "fingers" profile (Fig. 1b and c), in which the five most common GDGTs (GDGT-0 to -4; *m/z* 1,302, 1,300, 1,298, 1,296, and 1,294) all were present at similar concentrations. The sample in Fig. 1c was from Yellowstone, while the sample in Fig. 1b was from the same hot spring (Surprise Valley) as the

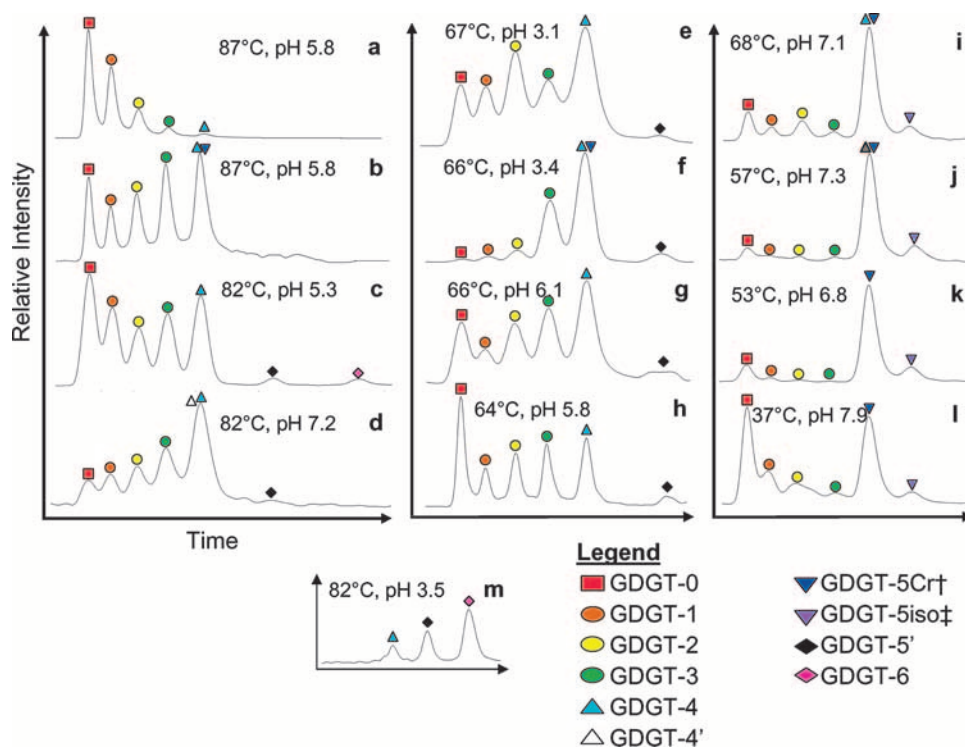


FIG. 1. Representative chromatograms for GDGTs from selected hot springs, with temperature and pH values. (a to d) Samples at high temperatures ( $>80^{\circ}\text{C}$ ): (a) Surprise Valley white streamers (55); (b) Surprise Valley mat community (beneath white streamers) (61); (c) Cistern Spring, Yellowstone; (d) Perpetual Spouter-B, Yellowstone. (e to h) Samples near  $65^{\circ}\text{C}$ : (e) Beowulf ED-1, Yellowstone; (f) Whirligig Geyser, Yellowstone; (g) Rubber Mat, Kamchatka; (h) Vent 1 North, Kamchatka. (i to l) Samples rich in crenarchaeol: (i) Buffalo Valley-2, Nevada (61); (j) Rick's Hot Creek (61); (k) Paradise Valley (36); (l) Seven Devils (61). (m) Pure culture of *Acidilobus saccharovorans* 345-15.

sample in Fig. 1a. These two  $87^{\circ}\text{C}$  Surprise Valley samples were collected within a meter of each other. Figure 1a represents a "streamer" community, while Fig. 1b represents the 0- to 1-cm horizon of microbial mat sitting on the sediment surface at the bottom of the spring.

The "fingers" pattern also was the most common GDGT profile seen in Kamchatka hot springs (e.g., Fig. 1g and h), occurring in all but one (Zavarzin) of these samples. The Kamchatka samples cover a narrower range of temperatures ( $55$  to  $75^{\circ}\text{C}$ ) and generally have lower pH values ( $4.9$  to  $6.3$ ). The minimum-pH Kamchatka sample ( $4.9$ ) also was the one from Zavarzin with the unique (among Kamchatka) GDGT profile.

This "fingers" pattern, however, was not universal among middle-temperature ( $55$  to  $75^{\circ}\text{C}$ ) hot springs (e.g., Fig. 1f and i to j). Examples include Whirligig Geyser (Fig. 1f), which had relatively more of each GDGT with successively more rings up to  $m/z$  1,294 (four cyclopentyl rings). This is a low-pH hot spring from Yellowstone and is unlike the mid-pH springs from Kamchatka. Other examples of non-"fingers" profiles from  $55$  to  $75^{\circ}\text{C}$  springs included two Great Basin samples that were rich in crenarchaeol (Fig. 1i and j). These are Buffalo Valley and Rick's Hot Creek, both of which are above pH 7 (61). Among the whole data set, lower-temperature hot springs ( $<55^{\circ}\text{C}$ ) were fewer in number. All were from the Great Basin (e.g., Fig. 1k and l; abundance data reported in reference 61). These springs tended to have pH values of  $>7$  and to be rich in crenarchaeol.

Several samples had GDGT distributions similar to pure cultures of *Crenarchaeota*. The data from Porcelain Basin (Yellowstone;  $75^{\circ}\text{C}$ , pH 3.5) were similar to the results from *Sulfolobus solfataricus* ( $85^{\circ}\text{C}$ , pH 4.5). GDGTs from Arkashin and many of the Yellowstone springs (Beowulf, Perpetual Spouter, Whirligig, Echinus Geyser, and Monarch Geyser) were similar to the profiles of *Thermoproteus uzoniensis* and *Vulcanisaeta moutnovskia*. However, patterns of GDGTs similar to *Acidilobus saccharovorans* (Fig. 1m) and *Acidilobus aceticus*, which had primarily had GDGTs with four to six rings (up to  $m/z$  1,290), were not found among the natural hot spring samples. None of the hot spring samples had five-ring or six-ring GDGTs as the most abundant component, unless the five-ring GDGT was crenarchaeol.

Three soil samples also were collected near Rick's Hot Creek, Eagleville, and Surprise Valley, and GDGT profiles were measured (Table 1). These samples were collected  $\sim 10$  m uphill from each spring, to ensure that the soil was not impacted by hydrothermal runoff (21). Crenarchaeol was relatively more abundant in Rick's Hot Creek and Eagleville hot springs than in nearby soils, while GDGT-0, -1, and -2 ( $m/z$  1,302, 1,300, and 1,298) were relatively less abundant in the springs than in the soils (Fig. 2). The crenarchaeol in these two springs could not be exclusively soil derived, unless any concomitant input of GDGT-0, -1, and -2 simultaneously was degraded.

In the case of Surprise Valley soil (Fig. 2c), however, the data were more ambiguous. The vent wall sample ( $56^{\circ}\text{C}$ ) from



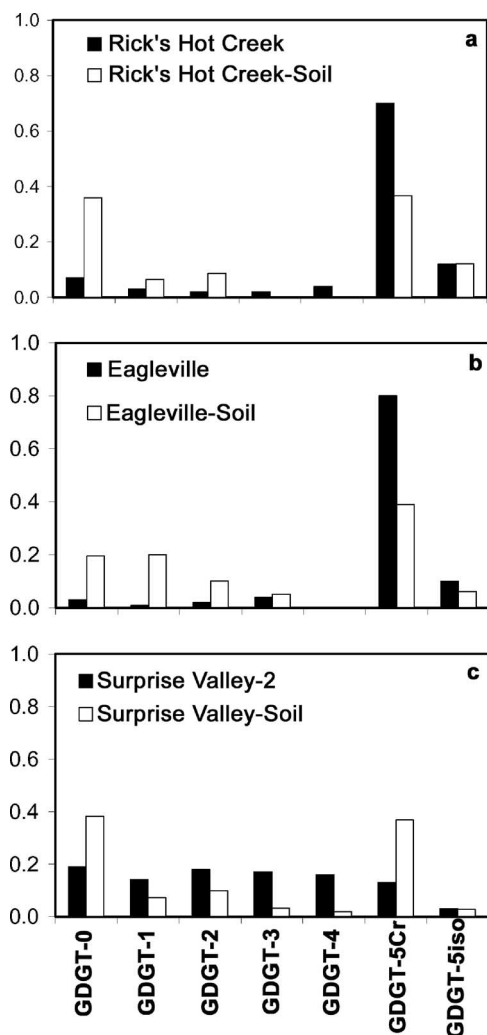


FIG. 2. Histograms comparing relative abundances of GDGTs from three crenarchaeol-rich hot springs and their surrounding soils. (a) Rick's Hot Creek. (b) Eagleville. (c) Surprise Valley. Cr, crenarchaeol; iso, crenarchaeol isomer.

Surprise Valley contained small enough relative quantities of crenarchaeol (0.13) that the soil end member from Surprise Valley (0.37; Table 1) could be the source. However, as the sample was wall derived (sinter) and not in contact with muds on the floor of the spring, soil remains unlikely. We also cannot disregard the possibility that the trace (<5%) crenarchaeol in samples such as the higher-temperature Surprise Valley samples (from the mud floor of the spring) and Whirligig Geyser, Yellowstone, derived from surrounding soils. The presence of crenarchaeol in all of these springs could reflect archaeal communities that reside near the edges of the springs, either in contact with geothermally impacted soils or at the boundary between the spring and the soil, but the data effectively dispel any idea that geothermally unimpacted soils are significant sources of crenarchaeol for these hot springs.

We also measured BIT values (20), both from the hot springs and from the soils in the vicinity of hot springs. BIT values were lower for hot springs than for their paired soils. Direct comparison of the hot spring and soil from Eagleville

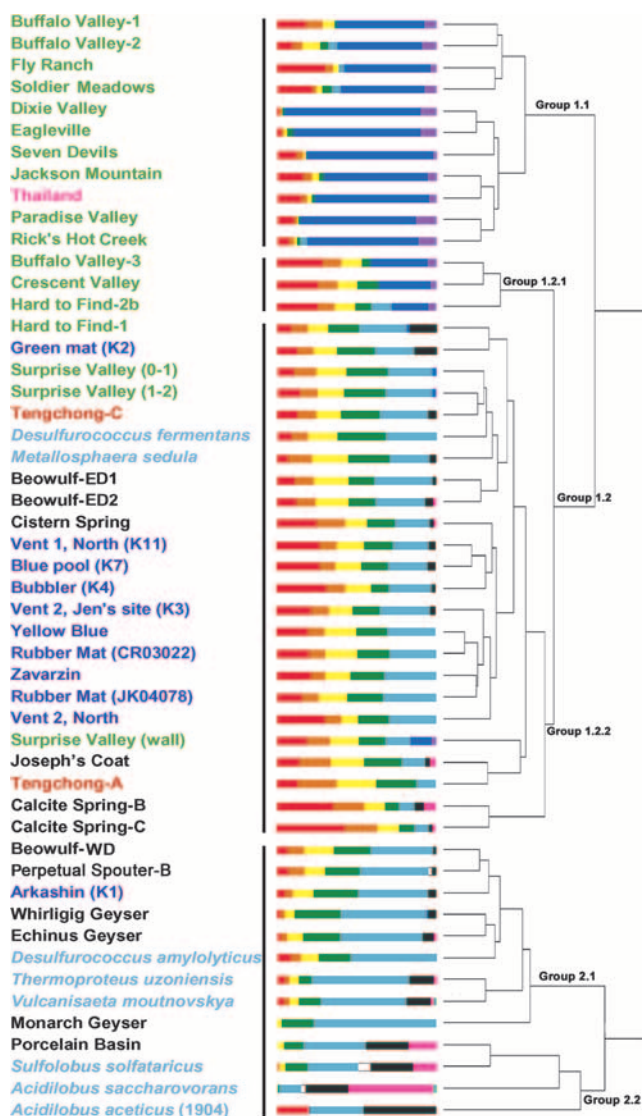


FIG. 3. GDGT cluster tree with sample labels. Labels for sample locations are color coded: Nevada, green; Yellowstone, black; Kamchatka, dark blue; Tengchong, red; Thailand, pink; and pure cultures, light blue. Histograms of GDGTs are colored from left (GDGT-0, red) to right (GDGT-6', turquoise), in the order of the GDGT columns in Table 1 and the marker symbols in Fig. 1. Group designations are as discussed in the text.

illustrates an example: although Eagleville hot spring BIT (0.58) is relatively high among our hot springs (BIT for all measured hot springs, 0.03 to 0.66), the surrounding soil BIT is 0.81.

**Cluster analysis.** To examine these qualitative patterns, cluster analysis was performed (e.g., see reference 49). The data fell into two major groups of GDGT distributions. Within the first group, three subcategories with different characteristics were adopted (Fig. 3). To aid visualization, a separate figure (Fig. 4) shows the temperature and pH of each sample in descending order from the top to the bottom of the cluster diagram.

In Fig. 3, the samples falling within group 1.1 were exclusively from the North American Great Basin and Thailand.

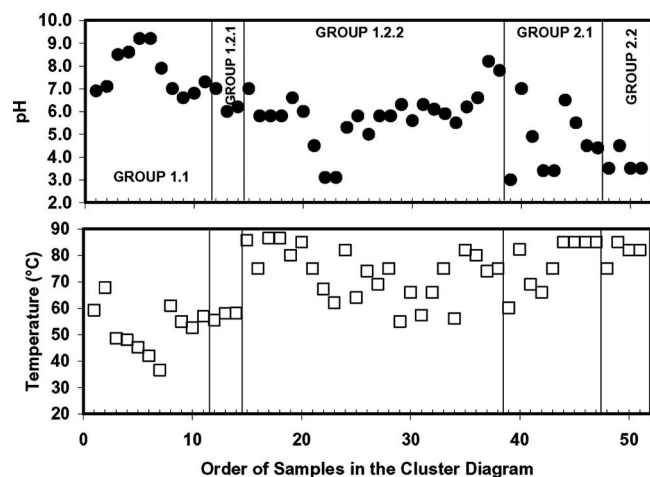


FIG. 4. Temperature and pH data for samples in the order in which they appear in the cluster diagram (Fig. 3). Sample 1 represents Buffalo Valley-1, while sample 51 represents *Acidilobus aceticus* 1904.

They tend to have alkaline or neutral pH and temperatures below the  $\sim 73^{\circ}\text{C}$  thermal cutoff (7, 15) for photosynthesis (Fig. 4). The pH values range from 6.6 to 9.2, and the average is 7.7. The temperatures range from  $36.5^{\circ}\text{C}$  to  $67.8^{\circ}\text{C}$ , and the average is  $52^{\circ}\text{C}$ . Group 1.1 appears to be defined by samples that have dominant abundances of crenarchaeol.

Reflecting an apparently more widespread GDGT pattern, representatives of nearly all of the geographic sampling locations are found within group 1.2. Group 1.2 includes all of the samples with the "fingers" pattern. A subgroup (group 1.2.1) has measurable, but lower, abundances of crenarchaeol than group 1.1. However, the majority of group 1.2 falls into a second subgroup (1.2.2) which is nearly free of crenarchaeol. On average, group 1.2 hot springs have higher temperatures and a wider range of acidity than group 1.1. The pH values range from 3.1 to 8.2 (average, 5.9). Only 2 of 27 samples in this group are alkaline (pH 7.8 and 8.2). The temperatures range from  $55.0^{\circ}\text{C}$  to  $86.5^{\circ}\text{C}$ , and the average is  $71^{\circ}\text{C}$ .

Group 2.1 shows a dominance of high-temperature samples (range,  $60.1$  to  $85.0^{\circ}\text{C}$ ; average,  $77^{\circ}\text{C}$ ) and a wide range of pHs (from 3.0 to 7.0). The average pH (4.7) is much more acidic than group 1. All but one of the environmental samples in this group are from Yellowstone, and the GDGT profiles tend to have high relative abundances of GDGT-4 ( $m/z$  1,294). Cultured *Crenarchaeota* primarily fall in this group as well, and they contain mostly GDGT-4 to -6. The four samples at the bottom of the figure (group 2.2; Porcelain Basin, *Sulfolobus*, and *Acidilobales* spp.) have an average temperature of  $81^{\circ}\text{C}$  and pH of 3.8.

The overall pattern is guided by opposing trends of temperature and pH (Fig. 4). The grouping of archaeal GDGTs appears to be related to both of these variables, although the degree of heterogeneity in group 1.2.1, in particular, is quite large. To examine whether these patterns are statistically significant and to attempt to enumerate the controlling variable(s), the data were examined by PCA.

**PCA.** A PCA was run using 11 variables: temperature, pH, and all GDGTs shown in Table 1, except for GDGT-4' and GDGT-6', which are rarely occurring, unidentified isomers of

GDGT-4 ( $m/z$  1,294) and GDGT-6 ( $m/z$  1,290). After extracting eigenvalues from the normalized data, the data were best explained by four factors (A, B, C, and D). The Varimax-rotated factor loadings ( $r$  values) for the 11 variables are shown in Table 2. The factor that yielded the best correlation with each variable is shown in boldface in the table (i.e., one factor highlighted per row). All of the underlined values had individually significant correlation ( $r^2 > 0.5$ ). For some variables, namely, temperature and GDGT-5' ( $m/z$  1,292', five cyclopentyl rings), no single factor significantly explained the variance. All others were significantly correlated to a single factor. The factors are arranged in order of the greatest (A) to least (D) fraction of the total cumulative variance that was explained by that factor.

Factor A shows that the qualitative relationships previously observed between pH, GDGT-4 ( $m/z$  1,294), and crenarchaeol ( $m/z$  1,292) are significant. The correlation between pH ( $r = -0.80$ ) and GDGT-4 ( $r = 0.86$ ) is inverse in direction, reflecting the fact that more GDGT-4 is likely to be found at lower pH (e.g., group 2; Fig. 3). The correlation between pH ( $r = -0.80$ ) and crenarchaeol ( $r = -0.86$ ) is in the same direction, reflecting a greater abundance of crenarchaeol at higher pH (e.g., group 1.1; Fig. 3). The most significant amount of the temperature variance also was associated with factor A ( $r = 0.64$ ), although with relatively poor correlation ( $r^2 = 0.41$ ). It is revealing nonetheless, as it confirms the direction of association (lower temperature with higher pH) while showing that the correlation with GDGT distributions is better for pH than for temperature. Such effects have been observed for other GDGTs (32; Boyd et al., unpublished).

Factor B was associated with only one measured variable, GDGT-0. It also had one of the highest factor scores in the table (0.91), and as the second-rank factor, accounts for the second-highest fraction of the total variance within the samples. This provides strong support for its independence with respect to other GDGTs, as well as from constraints imposed by the physical variables temperature and pH. The uniqueness of GDGT-0 may be due to its expected contribution from *Euryarchaeota* as well as *Crenarchaeota*. While both acyclic and cyclopentyl ring-containing GDGTs have been reported in *Euryarchaeota* (3, 32), the acyclic compound in particular is reported frequently among *Euryarchaeota* (12, 13, 48).

Factor C groups the variables GDGT-5' (all cyclopentyl,  $m/z$  1,292) and GDGT-6 ( $m/z$  1,290), which occur primarily in pure cultures but more rarely in environmental samples. GDGTs in this category favor the hottest, most acidic springs (group 2.2; Fig. 3). Factor D shows a significant association between the compounds containing one to three cyclopentyl rings (GDGT-1 to GDGT-3;  $m/z$  1,300, 1,298, and 1,296, respectively). Neither factor C nor D explains a significant amount of the variance associated with the variable pH or temperature.

A three-dimensional plot of the factor scores for all samples is shown in Fig. 5a; only A, B, and D are shown, as few samples have high scores for factor C. It is apparent that most of the samples from the Great Basin (and the one from Thailand) are distinct from the other environments, consistent with cluster group 1.1. Samples from Yellowstone, Kamchatka, and China (YKC samples) cluster around an anticorrelated relationship between factors A and D (Fig. 5a and b). The positive relationship between factors A and D for the Great Basin samples

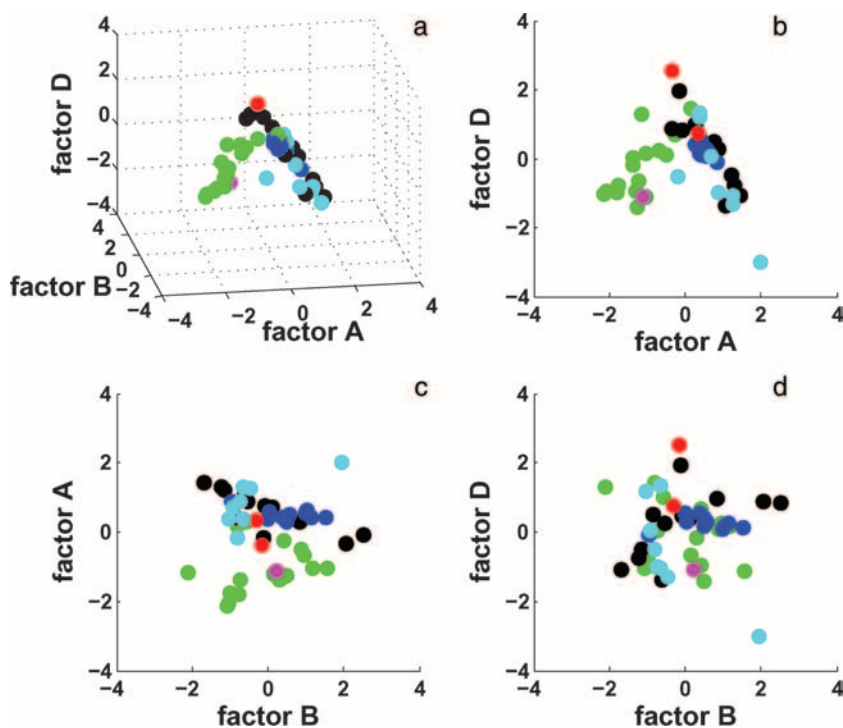


FIG. 5. Results from PCA. Samples are colored to match the geographic color codes used in Fig. 3. (a) The relationship between environmental factors A, B, and D shows that the samples form a “tent” or V shape around an apex between factors A and D. (b) Factor D relative to factor A shows the grouping of Yellowstone and Kamchatka samples with pure cultures and Great Basin (Nevada and California) samples with the single Thailand sample. (c and d) There is no pattern in the relationship between factor A or D and factor B, but samples from common geographic origins tend to cluster together.

is a direct reflection of their high concentrations of crenarchaeol and thus low scores for factor A. Conversely, YKC samples have more GDGT-4 at higher temperatures and lower pH, leading to high scores for factor A. The general lack of overlap between the two major families of GDGT-bearing samples (Great Basin and YKC; loosely equivalent to groups 1 and 2 in Fig. 3) results in a V-like pattern (Fig. 5b). The grouping of crenarchaeal cultures with YKC samples is consistent with the original sources from which these strains were cultivated (4–6, 22, 38, 40, 62).

A plot of factor D versus B (the putative factor for euryarchaeotal influence) shows that there is no obvious relationship between the two (Fig. 5d); the same holds true for all other factors when compared to factor B (Fig. 5c).

## DISCUSSION

Positive correlations between ring index (weighted average number of cyclopentyl rings) and temperature (50, 51; Boyd et al., unpublished), and negative correlations with pH (Boyd et al., unpublished), have been observed in pure cultures of thermophilic *Archaea*. Similar patterns are inconsistently observed in terrestrial geothermal systems within our own work (36, 61) as well as by others (45). Far more reliable is the correlation between marine surface water temperatures and  $TEX_{86}$ , an index constructed from the abundances of GDGTs recovered from low-temperature marine and lacustrine environments. The linear correlation between  $TEX_{86}$  and temperature holds over a wide range of aquatic settings (18, 39, 42, 58, 59).

However, when values of  $TEX_{86}$  are calculated from GDGTs from cultured *Crenarchaeota* (50, 51; Boyd et al., unpublished) and are compared to marine environmental samples, the slopes of these temperature relationships are not the same. If universal, the  $TEX_{86}$  relationship would require that GDGT-1 disappear above 36 to 48°C (42, 43), and thus its presence in cultures and geothermal springs above 65°C (Table 1) (36, 61) indicates that other environmental or community variables also influence archaeal GDGT distributions.

The samples as grouped by cluster analysis (Fig. 3) were most strongly distributed according to the compounds GDGT-4 and crenarchaeol. Hot-temperature, low-pH springs (groups 2.1 and 2.2) generally were distinct and never contained crenarchaeol. The representatives of cultured species of *Crenarchaeota* analyzed here also fell mainly into these groups. In contrast, presumably the newly reported thermophilic, ammonia-oxidizing crenarchaeon “*Candidatus Nitrosocaldus yellowstonii*” (10) would fall into group 1.1 or group 1.2.1. It grows optimally at 72°C under slightly alkaline conditions and produces abundant crenarchaeol. The division between crenarchaeol-rich and crenarchaeol-poor samples, while dominated by the influence of pH (factor A; Table 2 and Fig. 5), also appears to be related to temperature. Geothermal samples collected at temperatures of  $> \sim 75^\circ\text{C}$  generally do not contain large amounts of crenarchaeol, even at high pH. Interestingly, this apparent cutoff temperature is very similar to the upper thermal limit ( $\sim 73^\circ\text{C}$ ) for photosynthetic communities (7, 15). “*Candidatus Nitrosocaldus yellowstonii*” may grow naturally within a community that lives at the cusp of this boundary.



In PCA, communality ( $h^2$ ) is analogous to reported  $R^2$  values for linear regressions (Table 2). Among these samples, all of the GDGTs have  $\geq 70\%$  of their total communality explained using four orthogonal factors, A, B, C, and D. The identification of four, rather than two, significant factors is consistent with our observations that GDGT profiles are functions of more than just temperature and pH. One such example is shown in Fig. 1a and b. These samples have the same environmental temperature and pH but different GDGT patterns, indicating there must be more than two total factors that control GDGT abundances. Examples of inorganic controls might be salinity, total dissolved solids, total inorganic carbon, alkalinity,  $\text{NH}_4^+$ ,  $\text{S}^{2-}$ ,  $\text{H}_2$ ,  $\text{CH}_4$ , or major cations. Other controls could be biotic, which might be detected as large differences in abundance of particular crenarchaeotal or euryarchaeotal genera. A more complete analysis of the geochemical distributions in these springs, in combination with additional phylogenetic information (21), is needed to provide more insight into these GDGT patterns. The four factors may reflect differences in community structure and/or in metabolic expression (e.g., ammonia oxidation versus hydrogen or sulfur oxidation). Great Basin springs are rich in  $\text{Na}^+$ ,  $\text{Cl}^-$ ,  $\text{SiO}_2$ , and  $\text{HCO}_3^-$  (60); while communities in Yellowstone often live in acidic conditions and often are sustained by the oxidation of  $\text{H}_2$  (47) and/or sulfur compounds (34).

Temperature also may be an important influence within each of the different factors. This could account for the relatively even splitting of its variance among factors A to D. This also would be consistent with other observations indicating, for example, that multiring tetraethers are not physiological requirements for survival at high temperatures. The extremely thermophilic euryarchaeote *Methanopyrus kandleri* was observed to produce exclusively or mostly glycerol diethers (29, 48), while in situ measurements indicate that multiringed GDGTs are produced at depth in the open ocean and in the Black Sea, at temperatures below  $10^\circ\text{C}$  (8, 24, 55).

Because GDGT-0 does not vary systematically with any of the other variables (factor B), we propose that GDGT-0 is heavily influenced by the presence of euryarchaeota. While euryarchaeota are known to synthesize both GDGT-0 and GDGTs containing cyclopentyl rings (3, 32, 44), the influence of crenarchaeota on the abundance of ring-containing GDGTs appears to be strong enough to decouple these compounds from variations in GDGT-0. Since factor B accounts for the second-largest amount of total variance among the data, seemingly without identifiable pattern (Fig. 5), our results support its continued exclusion from current and future GDGT-derived biogeochemical proxies such as  $\text{TEX}_{86}$  (20, 42, 57).

Because the cultured species of hyperthermophilic, acid-tolerant archaea are heavily clustered on factor C, this factor could represent communities rich in thermoacidophiles. Community analysis of hot spring samples weighted onto factor C might reveal a dominance of *Sulfolobales* and *Acidilobales*. At least one environmental sample (Porcelain Basin) was rich in GDGT-6. Conversely, if uncultured relatives of these archaeal groups are found at more moderate temperatures, communities growing at these lower temperatures could be found to be heavily loaded on factor C. An example is Beowulf-ED2, which was measured at only  $62^\circ\text{C}$  but contained some GDGT-6.

Most of the GDGTs associated with the  $\text{TEX}_{86}$  temperature

index covary with factor D. The factor loadings indicate that GDGT-1 to -3 show a stronger relationship to each other than they do to temperature. However, despite factor D being a weak function of temperature, it is important to recognize that the result does not preclude systematic variation of these compounds with respect to each other as a function of temperature. This principle forms the basis for the  $\text{TEX}_{86}$  proxy (42) and is encouraging for  $\text{TEX}_{86}$ : it suggests that because GDGT-1, -2, and -3 may be under the control of the same process or community, they are likely to have mutually similar, consistent, and predictable relationships as a function of temperature.

Such analysis also supports the original decision to exclude GDGT-0 and crenarchaeol from the  $\text{TEX}_{86}$  formula. As noted originally (42), the variance in these compounds in marine samples appeared to overwhelm the signal from GDGT-1 to -3. Here the association of crenarchaeol and GDGT-0 with the top-ranked (greatest variance) factors, A and B, agrees. The  $\text{TEX}_{86}$  formula effectively isolates a set of GDGTs from these large variances and then relates them to temperature. The sensitivities of this relationship (slope of rings versus temperature) certainly are different among the different settings (marine and geothermal), but the community or geochemical driver that causes these compounds to coassociate could be universal.

However, the PCA results also suggest reexamination of the influence of crenarchaeol and its isomer on  $\text{TEX}_{86}$ . These compounds may show greater variability in nonbuffered systems, due to their high variance with pH. This could explain some of the difficulties of applying the  $\text{TEX}_{86}$  index to small lakes (39). Factor A predicts that an increase in pH would cause crenarchaeol and its isomer to increase, raising the apparent temperature. Similarly, low pH could be mistaken for cooler temperatures. pH effects on aquatic samples should be considered along with other explanations such as terrestrially derived GDGTs (18, 39, 56, 57). Some precedent for joint pH-temperature adjustment of bacterial GDGT-based paleoproxies in soils already exists (57). An important caveat is that our argument assumes factor A applies globally, which certainly requires further investigation. Such an interpretation would, however, provide an explanation for why modern marine  $\text{TEX}_{86}$  values are so reliable: the ocean is highly buffered, and pH variability is small.

The finding that crenarchaeol and GDGT-4 are stronger functions of pH than temperature is inconsistent with our previous reports (36, 61). However, all of those earlier samples remain as a subset of the data reported here; they are less diverse geographically and have a smaller spread in pH values. The integrated data are consistent with temperature exerting the primary control when the pH range is narrow, but remaining uncertainties argue for continued expansion of the breadth and geography of sampling in the future.

We also find that very few samples have significant quantities of both GDGT-4 and crenarchaeol. Crenarchaeol is present at neutral or alkaline pH, but it has not yet been found under acidic conditions ( $< \text{pH } 6$ ). The data qualitatively support the suggestion that crenarchaeol may be a biomarker for archaeal ammonia oxidation (10), something that will be explored further as more strains of ammonia-oxidizing crenarchaeota are cultivated. At present, the only two characterized



strains of archaeal ammonia oxidizers, *Nitrosopumilus maritimus* and “*Candidatus Nitrosocaldus yellowstonii*,” both produce crenarchaeol.

**Conclusions.** GDGTs have been found widely distributed in aquatic and terrestrial communities. Their relative abundances reflect archaeal community structure and/or the associated geochemical conditions. Because of the potential for metabolic similarity among marine, terrestrial, and hot spring crenarchaeota, studying the factors that affect the distribution of hot spring GDGTs could provide hints to what may be universal controls on GDGT compositions. Based on our results from 54 samples, we find that variance in GDGT profiles primarily involves GDGT-0, GDGT-4, and crenarchaeol. This is consistent with marine and lacustrine settings in which GDGT-0 and crenarchaeol have larger variances than GDGT-1 to -3. We also find that while we cannot identify any predictor for GDGT-0, the covariance of GDGT-4 and crenarchaeol is such that one appears to nearly replace the other under acidic or alkaline conditions, respectively, especially at  $\leq \sim 73^\circ\text{C}$ . The metabolic or community mechanism leading to this anticorrelation remains to be determined. The hypothesis that crenarchaeol could be a biomarker for archaeal ammonia oxidation in nonacidic environments (10) is apparently supported by the predominance of crenarchaeol in circumneutral or alkaline hot springs in the Great Basin. The grouping of GDGT-1 to -3 provides theoretical support for the formulation of the  $\text{TEX}_{86}$  paleotemperature index, but it also suggests that the role of the crenarchaeol isomer in  $\text{TEX}_{86}$  should be reexamined. If its abundance is positively correlated with the abundance of crenarchaeol, then it is likely that this compound is sensitive to variations in pH.

#### ACKNOWLEDGMENTS

We thank David and Sandy Jamieson and Suzy Jackson for their hospitality during sampling in Nevada and California. We also thank Paul Schroeder and Doug Crowe and colleagues from the Microbiology Institute of the Russian Academy of Sciences (Elizaveta Bonch-Osmolovskaya, Nikolai Pimenov, and Tatyana Sokolova) and the Institute of Volcanology (Gennadii A. Karpov) for field support during sampling of Kamchataka hot springs in 2003 and 2004. Soil samples from Nevada were provided by B. Hedlund. Suping Yao provided the two hot spring samples collected from Tengchong, China. We appreciate collaboration with A.-L. Reysenbach regarding samples collected at Calcite Springs, Yellowstone National Park (YNP), and we are grateful to C. Hendrix and T. Olliff (Center for Resources, YNP) for permitting the research conducted with samples collected within YNP. We thank C. Turich for advice on cluster analyses. Three anonymous reviewers provided excellent, detailed comments that greatly improved the manuscript.

C.L.Z. and C.S.R. were supported by NSF MCB 0348180. W.P.I. was supported by NASA NNG04GR46G, NSF MCB-0132022, and NSF RCN-0342269. A.P. was supported by NSF OCE-0241363, NSF EAR-0311937, and the David & Lucille Packard Foundation.

#### REFERENCES

- Biddle, J. F., J. S. Lipp, M. A. Lever, K. G. Lloyd, K. B. Sorensen, R. Anderson, H. K. Fredricks, M. Elvert, T. J. Kelly, D. P. Schrag, M. L. Sogin, J. E. Brenchley, A. Teske, C. H. House, and K. U. Hinrichs. 2006. Heterotrophic Archaea dominate sedimentary subsurface ecosystems off Peru. *Proc. Natl. Acad. Sci. USA* **103**:3846–3851.
- Bligh, E. G., and W. J. Dyer. 1959. A rapid method for total lipid extraction and purification. *Can. J. Biochem. Physiol.* **37**:911–917.
- Blumenberg, M., R. Seifert, K. Nauhaus, T. Pape, and W. Michaelis. 2005. In vitro study of lipid biosynthesis in an anaerobically methane-oxidizing microbial mat. *Appl. Environ. Microbiol.* **71**:4345–4351.
- Bonch-Osmolovskaya, E. A., A. I. Slesarev, M. L. Miroshnichenko, T. P. Svetlichnaya, and V. A. Alekseev. 1988. Characteristics of *Desulfurococcus amylolyticus* n. sp.—a new extremely thermophilic archaeobacterium isolated from thermal springs of Kamchatka and Kunashir Island. *Mikrobiologiya* **57**:94–101. (In Russian.)
- Bonch-Osmolovskaya, E. A., M. L. Miroshnichenko, N. A. Kostrikina, N. A. Chernyh, and G. A. Zavarzin. 1990. *Thermoproteus uzoniensis* sp. nov., a new extremely thermophilic archaeobacterium from Kamchatka continental hot springs. *Arch. Microbiol.* **154**:556–559.
- Boyd, E. S., R. A. Jackson, G. Encarnacion, J. A. Zahn, T. Beard, W. D. Leavitt, Y. Pi, C. L. Zhang, A. Pearson, and G. G. Geesey. 2007. Isolation, characterization, and ecology of sulfur-respiring *Crenarchaea* inhabiting acid-sulfate-chloride-containing geothermal springs in Yellowstone National Park. *Appl. Environ. Microbiol.* **73**:6669–6677.
- Brock, T. D. 1967. Micro-organisms adapted to high temperatures. *Nature* **214**:882–885.
- Coolen, M. J. L., B. Abbas, J. van Bleijswijk, E. C. Hopmans, M. M. M. Kuypers, S. G. Wakeham, and J. S. Sinninghe Damsté. 2007. Putative ammonia-oxidizing Crenarchaeota in suboxic waters of the Black Sea: a basin-wide ecological study using 16S ribosomal and functional genes and membrane lipids. *Environ. Microbiol.* **9**:1001–1016.
- Davis, J. C. 2002. Statistics and data analysis in geology, 3rd ed. John Wiley and Sons, New York, NY.
- De La Torre, J. R., C. B. Walker, A. E. Ingalls, M. Könneke, and D. A. Stahl. 2008. Cultivation of a thermophilic ammonia oxidizing archaeon synthesizing crenarchaeol. *Environ. Microbiol.* **10**:810–818.
- De Rosa, M., E. Esposito, A. Gambacorta, B. Nicolaus, and J. D. Br'Lock. 1980. Effects of temperature on the lipid composition of *Caldariella acidophila*. *Phytochemistry* **19**:827–831.
- De Rosa, M., A. Gambacorta, and A. Gliozzi. 1986. Structure, biosynthesis, and physicochemical properties of archaeobacterial lipids. *Microbiol. Rev.* **50**:70–80.
- De Rosa, M., and A. Gambacorta. 1988. The lipids of archaeobacteria. *Prog. Lipid Res.* **27**:153–175.
- Elferink, M. G., J. G. de Wit, A. J. Driessen, and W. N. Konings. 1994. Stability and proton-permeability of liposomes composed of archaeal tetraether lipids. *Biochim. Biophys. Acta* **1193**:247–254.
- Ferris, M. J., and D. M. Ward. 1997. Seasonal distributions of dominant 16S rRNA-defined populations in a hot spring microbial mat examined by denaturing gradient gel electrophoresis. *Appl. Environ. Microbiol.* **63**:1375–1381.
- Gliozzi, A., G. Paoli, M. DeRosa, and A. Gambacorta. 1983. Effect of isoprenoid cyclization on the transition temperature of lipids in thermophilic archaeobacteria. *Biochim. Biophys. Acta* **735**:234–242.
- Golyshina, O. V., and K. N. Timmis. 2005. Ferroplasma and relatives, recently discovered cell wall-lacking archaea making a living in extremely acid, heavy metal-rich environments. *Environ. Microbiol.* **7**:1277–1288.
- Herfort, L., S. Schouten, J. P. Boon, and J. S. Sinninghe Damsté. 2005. Application of the  $\text{TEX}_{86}$  temperature proxy to the southern North Sea. *Org. Geochem.* **37**:1715–1726.
- Hopmans, E. C., S. Schouten, R. D. Pancost, M. T. J. van der Meer, and J. S. Sinninghe Damsté. 2000. Analysis of intact tetraether lipids in archaeal cell material and sediments by high performance liquid chromatography/atmospheric pressure chemical ionization mass spectrometry. *Rapid Commun. Mass Spectrom.* **14**:585–589.
- Hopmans, E. C., J. W. H. Weijers, E. Schefu, L. Herfort, J. S. Sinninghe Damsté, and S. Schouten. 2004. A novel proxy for terrestrial organic matter in sediments based on branched and isoprenoid tetraether lipids. *Earth Planet. Sci. Lett.* **224**:107–116.
- Huang, Z., B. P. Hedlund, J. Wiegand, J. Zhou, and C. L. Zhang. 2007. Molecular phylogeny of uncultivated Crenarchaeota in Great Basin hot springs of moderately elevated temperature. *Geomicrobiol. J.* **24**:535–542.
- Huber, G., C. Spinnler, A. Gambacorta, and K. O. Stetter. 1989. *Metallosphaera sedula* gen. nov. and sp. nov. represents a new genus of aerobic, metal-mobilizing, thermoacidophilic archaeobacteria. *Syst. Appl. Microbiol.* **12**:38–47.
- Huguet, C., E. C. Hopmans, W. Febo-Ayala, D. H. Thompson, J. S. Sinninghe Damsté, and S. Schouten. 2006. An improved method to determine the absolute abundance of glycerol dibiphytanyl glycerol tetraether lipids. *Org. Geochem.* **37**:1036–1041.
- Ingalls, A. E., S. R. Shah, R. L. Hansman, L. I. Aluwihare, G. M. Santos, E. R. M. Druffel, and A. Pearson. 2006. Quantifying archaeal community autotrophy in the mesopelagic ocean using natural radiocarbon. *Proc. Natl. Acad. Sci. USA* **103**:6442–6447.
- Jolliffe, I. T. 1986. Principal component analysis. Springer-Verlag, New York, NY.
- Kaiser, H. F. 1958. The varimax criterion for analytic rotation in factor analysis. *Psychometrika* **23**:187–200.
- Koga, Y., H. Morii, M. Akagawa-Matsushita, and M. Ohga. 1998. Correlation of polar lipid composition with 16S rRNA phylogeny in methanogens: further analysis of lipid component parts. *Biosci. Biotechnol. Biochem.* **62**:230–236.
- Koga, Y., and H. Morii. 2005. Recent advances in structural research on

- ether lipids from archaea including comparative and physiological aspects. *Biosci. Biotechnol. Biochem.* **69**:2019–2034.
29. Kurr, M., R. Huber, H. König, H. W. Jannasch, H. Fricke, A. Trincone, J. K. Kristjansson, and K. O. Stetter. 1991. *Methanopyrus kandleri*, gen. and sp. nov. represents a novel group of hyperthermophilic methanogens, growing at 110°C. *Arch. Microbiol.* **156**:239–247.
  30. Kuypers, M. M. M., P. Blokker, J. Erbacher, H. Kinkel, R. D. Pancost, S. Schouten, and J. S. Sinninghe Damsté. 2001. Massive expansion of marine archaea during a mid-Cretaceous oceanic anoxic event. *Science* **293**:92–94.
  31. Leininger, S., T. Urich, M. Schloter, L. Schwark, J. Qi, G. W. Nicol, J. I. Prosser, S. C. Schuster, and C. Schleper. 2006. Archaea predominate among ammonia-oxidizing prokaryotes in soils. *Nature* **442**:806–809.
  32. Macalady, J. L., M. M. Vestling, D. Baumler, N. Boekelheide, C. W. Kaspar, and J. F. Banfield. 2004. Tetraether-linked membrane monolayers in *Ferroplasma* spp.: a key to survival in acid. *Extremophiles* **8**:411–419.
  33. Maidonald, J., and J. Braun. 2003. Data analysis and graphics using R—an example-based approach. Cambridge University Press, Cambridge, United Kingdom.
  34. Nordstrom, D. K., J. W. Ball, and R. B. McCleskey. 2005. Ground water to surface water: chemistry of thermal outflows in Yellowstone National Park, p. 143–162. In W. P. Inskeep and T. R. McDermott (ed.), *Geothermal biology and geochemistry in Yellowstone National Park*, vol. 1. Montana State University, Bozeman.
  35. Pancost, R. D., S. Pressley, J. M. Coleman, L. G. Benning, and B. W. Mountain. 2005. Lipid biomolecules in silica sinters: indicators of microbial biodiversity. *Environ. Microbiol.* **7**:66–77.
  36. Pearson, A., Z. Huang, A. E. Ingalls, C. S. Romanek, J. Wiegand, K. H. Freeman, R. H. Smittenberg, and C. L. Zhang. 2004. Nonmarine crenarchaeol in Nevada hot springs. *Appl. Environ. Microbiol.* **70**:5229–5237.
  37. Peckmann, J., and V. Thiel. 2004. Carbon cycling at ancient methane-seeps. *Chem. Geol.* **205**:443–467.
  38. Perevalova, A. A., V. A. Svetlichny, I. B. Kublanov, N. A. Chernykh, N. A. Kostrikina, T. P. Tourova, B. B. Kuznetsov, and E. A. Bonch-Osmolovskaya. 2005. *Desulfurococcus fermentans* sp. nov., a novel hyperthermophilic archaeon from a Kamchatka hot spring, and emended description of the genus *Desulfurococcus*. *Int. J. Syst. Evol. Microbiol.* **55**:995–999.
  39. Powers, L. A., J. P. Werne, T. C. Johnson, E. C. Hopmans, J. S. Sinninghe Damsté, and S. Schouten. 2004. Crenarchaeotal membrane lipids in lake sediments: a new paleotemperature proxy for continental paleoclimate reconstruction? *Geology* **32**:613–616.
  40. Prokofeva, M., M. Miroshnichenko, N. Kostrikina, N. Chernykh, B. Kuznetsov, T. Tourova, and E. Bonch-Osmolovskaya. 2000. *Acidilobus acetatus* gen. nov., sp. nov., a novel anaerobic thermoacidophilic archaeon from continental hot vents in Kamchatka. *Int. J. Syst. Evol. Microbiol.* **50**:2001–2008.
  41. Schouten, S., E. C. Hopmans, R. D. Pancost, and J. S. Sinninghe Damsté. 2000. Widespread occurrence of structurally diverse tetraether membrane lipids: evidence for the ubiquitous presence of low-temperature relatives of hyperthermophiles. *Proc. Natl. Acad. Sci. USA* **97**:14421–14426.
  42. Schouten, S., E. C. Hopmans, E. Schefuß, and J. S. Sinninghe Damsté. 2002. Distributional variations in marine crenarchaeotal membrane lipids: a new tool for reconstructing ancient sea water temperatures? *Earth Planet. Sci. Lett.* **204**:265–274.
  43. Schouten, S., E. C. Hopmans, A. Forster, Y. van Breugel, M. M. Kuypers, and J. S. Sinninghe Damsté. 2003. Extremely high sea-surface temperatures at low latitudes during the middle Cretaceous as revealed by archaeal membrane lipids. *Geology* **31**:1069–1072.
  44. Schouten, S., S. G. Wakeham, E. C. Hopmans, and J. S. Sinninghe Damsté. 2003. Biogeochemical evidence that thermophilic archaea mediate the anaerobic oxidation of methane. *Appl. Environ. Microbiol.* **69**:1680–1686.
  45. Schouten, S., M. T. J. van der Meer, E. C. Hopmans, W. I. C. Rijpstra, A.-L. Reysenbach, D. M. Ward, and J. S. Sinninghe Damsté. 2007. Archaeal and bacterial glycerol dialkyl glycerol tetraether lipids in hot springs of Yellowstone National Park. *Appl. Environ. Microbiol.* **73**:6181–6191.
  46. Sinninghe Damsté, J. S., E. C. Hopmans, S. Schouten, A. C. T. van Duin, and J. A. J. Geenevasen. 2002. Crenarchaeol: the characteristic glycerol dibiphytanyl glycerol tetraether membrane lipid of cosmopolitan pelagic Crenarchaeota. *J. Lipid Res.* **43**:1641–1651.
  47. Spear, J. R., J. J. Walker, T. M. McCollom, and N. R. Pace. 2005. Hydrogen and bioenergetics in the Yellowstone hydrothermal system. *Proc. Natl. Acad. Sci. USA* **102**:2555–2560.
  48. Sprott, G. D., B. J. Agnew, and G. B. Patel. 1997. Structural features of ether lipids in the archaeobacterial thermophiles *Pyrococcus furiosus*, *Methanopyrus kandleri*, *Methanothermobacter fervidus*, and *Sulfolobus acidocaldarius*. *Can. J. Microbiol.* **43**:467–476.
  49. Turich, C., K. H. Freeman, M. A. Bruns, M. Conte, A. D. Jones, and S. G. Wakeham. 2007. Lipids of marine Archaea: patterns and provenance in the water-column and sediments. *Geochim. Cosmochim. Acta* **71**:3272–3291.
  50. Uda, I., A. Sugai, Y. H. Itoh, and T. Itoh. 2001. Variation on molecular species of polar lipids from *Thermoplasma acidophilum* depends on growth temperature. *Lipids* **36**:103–105.
  51. Uda, I., A. Sugai, Y. H. Itoh, and T. Itoh. 2004. Variation in molecular species of core lipids from the order *Thermoplasmatales* strains depends on growth temperature. *J. Oleo Sci.* **53**:399–404.
  52. Valentine, D. L. 2007. Adaptations to energy stress dictate the ecology and evolution of the Archaea. *Nat. Rev. Microbiol.* **5**:316–323.
  53. van de Vossenberg, J. L. C. M., A. J. M. Driessen, and W. N. Konings. 1998. The essence of being extremophilic: the role of the unique archaeal membrane lipids. *Extremophiles* **2**:163–170.
  54. van de Vossenberg, J. L. C. M., A. J. M. Driessen, W. Zillig, and W. N. Konings. 1998. Bioenergetics and cytoplasmic membrane stability of the extremely acidophilic, thermophilic archaeon *Picrophilus\_toshimae*. *Extremophiles* **2**:67–74.
  55. Wakeham, S. G., E. C. Hopmans, S. Schouten, and J. S. Sinninghe Damsté. 2004. Archaeal lipids and anaerobic oxidation of methane in euxinic water columns: a comparative study of the Black Sea and Cariaco Basin. *Chem. Geol.* **205**:427–442.
  56. Weijers, J. W. H., S. Schouten, O. C. Spaargaren, and J. S. Sinninghe Damsté. 2006. Occurrence and distribution of tetraether membrane lipids in soils: implications for the use of the TEX<sub>86</sub> proxy and the BIT index. *Org. Geochem.* **37**:1680–1693.
  57. Weijers, J. W. H., S. Schouten, J. C. van den Donker, E. C. Hopmans, and J. S. Sinninghe Damsté. 2007. Environmental controls on bacterial tetraether membrane lipid distribution in soils. *Geochim. Cosmochim. Acta* **8**:648–657.
  58. Wuchter, C., S. Schouten, M. J. L. Coolen, and J. S. Sinninghe Damsté. 2004. Temperature-dependent variation in the distribution of tetraether membrane lipids of marine Crenarchaeota: implications for TEX<sub>86</sub> paleothermometry. *Paleoceanography* **19**:PA4028. doi:10.1029/2004PA001041.
  59. Wuchter, C., S. Schouten, S. G. Wakeham, and J. S. Sinninghe Damsté. 2005. Temporal and spatial variation in tetraether membrane lipids of marine Crenarchaeota in particulate organic matter: implications for TEX<sub>86</sub> paleothermometry. *Paleoceanography* **20**:PA3013. doi:10.1029/2004PA001110.
  60. Zehner, R. E., M. F. Coolbaugh, and L. Shevenell. 2006. Regional ground-water geochemical trends in the Great Basin: implications for geothermal exploration. *GRC Transact.* **30**:117–124.
  61. Zhang, C. L., A. Pearson, Y. L. Li, G. Mills, and J. Wiegand. 2006. A thermophilic temperature optimum for crenarchaeol and its implication for archaeal evolution. *Appl. Environ. Microbiol.* **72**:4419–4422.
  62. Zillig, W., K. O. Stetter, S. Wunderl, W. Schulz, H. Pries, and I. Scholz. 1980. The *Sulfolobus*-*Caldariella* group: taxonomy on the basis of the structure of DNA-dependent RNA polymerases. *Arch. Mikrobiol.* **125**:259–269.