

Haplotype Structure of the *ENPP1* Gene and Nominal Association of the K121Q Missense Single Nucleotide Polymorphism With Glycemic Traits in the Framingham Heart Study

Elliot S. Stoleran,^{1,2,3} Alisa K. Manning,⁴ Jarred B. McAteer,^{1,2} Josée Dupuis,⁴ Caroline S. Fox,^{5,6} L. Adrienne Cupples,⁴ James B. Meigs,^{3,7} and Jose C. Florez^{1,2,3}

OBJECTIVE—A recent meta-analysis demonstrated a nominal association of the ectonucleotide pyrophosphatase phosphodiesterase 1 (*ENPP1*) K→Q missense single nucleotide polymorphism (SNP) at position 121 with type 2 diabetes. We set out to confirm the association of *ENPP1* K121Q with hyperglycemia, expand this association to insulin resistance traits, and determine whether the association stems from K121Q or another variant in linkage disequilibrium with it.

RESEARCH DESIGN AND METHODS—We characterized the haplotype structure of *ENPP1* and selected 39 tag SNPs that captured 96% of common variation in the region (minor allele frequency $\geq 5\%$) with an r^2 value ≥ 0.80 . We genotyped the SNPs in 2,511 Framingham Heart Study participants and used age- and sex-adjusted linear mixed effects (LME) models to test for association with quantitative metabolic traits. We also examined whether interaction between K121Q and BMI affected glycemic trait levels.

RESULTS—The Q allele of K121Q (rs1044498) was associated with increased fasting plasma glucose (FPG), A1C, fasting insulin, and insulin resistance by homeostasis model assessment (HOMA-IR; all $P = 0.01$ – 0.006). Two noncoding SNPs (rs7775386 and rs7773477) demonstrated similar associations, but LME models indicated that their effects were not independent from K121Q. We found no association of K121Q with obesity, but interaction models suggested that the effect of the Q allele on FPG and HOMA-IR was stronger in those with a higher BMI ($P = 0.008$ and 0.01 for interaction, respectively).

CONCLUSIONS—The Q allele of *ENPP1* K121Q is associated with hyperglycemia and insulin resistance in whites. We found an

adiposity-SNP interaction, with a stronger association of K121Q with diabetes-related quantitative traits in people with a higher BMI. *Diabetes* 57:1971–1977, 2008

Ectonucleotide pyrophosphatase phosphodiesterase 1 (*ENPP1*), also known as plasma cell membrane glycoprotein 1 (PC-1), is a transmembrane glycoprotein that down-regulates insulin signaling in cells by inhibiting the tyrosine kinase activity of the insulin receptor, perhaps by interaction with its α -subunit (1). Within the coding region of *ENPP1*, a K→Q missense single nucleotide polymorphism (SNP) at position 121 (K121Q; rs1044498) has been previously associated with insulin resistance and related abnormalities in some studies (2–7). The molecular mechanism thought to be responsible for the role of the Q121 variant is a “gain of function” of the *ENPP1* protein inhibitory activity on the insulin receptor (8). It has also been reported that insulin receptor autophosphorylation in fibroblasts is decreased in Q allele carriers compared with KK homozygotes (2). Thus, the *ENPP1* gene is considered to be a likely candidate gene for insulin resistance and type 2 diabetes (9).

Multiple studies have shown both positive and negative evidence of association between variants in *ENPP1* and obesity, type 2 diabetes, and related traits. Most recently, Meyre et al. (5) found that a haplotype formed by three SNPs in *ENPP1* (one of which was K121Q) was associated with childhood and adult obesity and type 2 diabetes. Three subsequent large association studies of variants in *ENPP1* detected no association of *ENPP1* K121Q with type 2 diabetes or obesity: Grarup et al. (10) found no association of K121Q with type 2 diabetes in a Danish population; Lyon et al. (11) found no significant association between three *ENPP1* SNPs (K121Q, rs1799774, and rs7754561) and BMI or type 2 diabetes; and Weedon et al. (12) found no association with variants in *ENPP1* and type 2 diabetes or obesity in a study involving 8,089 subjects in the U.K. In a comprehensive meta-analysis, we have recently shown that the *ENPP1* K121Q variant confers a modestly increased risk of type 2 diabetes under a recessive genetic model in whites ($P = 0.005$), an effect that appears to be modulated by BMI (13). Although these studies were informative, only a handful of SNPs were genotyped, and common variation in the *ENPP1* locus has not been examined comprehensively. Given the conflicting body of evidence in the literature and incomplete evaluation of the *ENPP1* gene, we set out to confirm the association of *ENPP1* K121Q with hyperglycemia, expand

From the ¹Center for Human Genetic Research and Diabetes Unit, Department of Medicine, Massachusetts General Hospital, Boston, Massachusetts; the ²Program in Medical and Population Genetics, Broad Institute of Harvard and Massachusetts Institute of Technology, Cambridge, Massachusetts; the ³Department of Medicine, Harvard Medical School, Boston, Massachusetts; the ⁴Department of Biostatistics, Boston University School of Public Health, Boston, Massachusetts; the ⁵Division of Endocrinology, Diabetes, and Hypertension, Brigham and Women's Hospital, Harvard Medical School, Boston, Massachusetts; the ⁶National Heart, Lung, and Blood Institute's Framingham Heart Study, Framingham, Massachusetts; and the ⁷General Medicine Division, Massachusetts General Hospital, Boston, Massachusetts. Corresponding author: Jose C. Florez, jcflorez@partners.org.

Received 22 February 2008 and accepted 16 April 2008.

Published ahead of print at <http://diabetes.diabetesjournals.org> on 21 April 2008. DOI: 10.2337/db08-0266.

J.B.M. serves on consultancy boards for GlaxoSmithKline, sanofi-aventis, Interleukin Genetics, Kalypsis, and Outcomes Sciences. J.C.F. has received a consulting honorarium from Publicis Healthcare Communications Group, a global advertising agency engaged by Amylin Pharmaceuticals.

© 2008 by the American Diabetes Association. Readers may use this article as long as the work is properly cited, the use is educational and not for profit, and the work is not altered. See <http://creativecommons.org/licenses/by-nc-nd/3.0/> for details.

The costs of publication of this article were defrayed in part by the payment of page charges. This article must therefore be hereby marked “advertisement” in accordance with 18 U.S.C. Section 1734 solely to indicate this fact.

TABLE 1
Demographic characteristics of the FHS participants

Trait	n	Mean \pm SD or %
Age at exam 5 (years)	2,397	54.1 \pm 9.76
Sex (% women)	2,511	53.0
Type 2 diabetes	2,511	9.6
Mean BMI (kg/m ²)	2,387	27.4 \pm 4.95
Exam 5 FPG (mg/dl)	2,365	100.2 \pm 26.4
Exam 5 A1C (%)	1,745	5.4 \pm 0.97
Mean FPG (mg/dl)	2,510	99.4 \pm 20.42
Exam 5 fasting insulin (μ U/ml)	2,258	30.0 \pm 12.27
Exam 5 HOMA-IR	2,258	7.7 \pm 4.91
Exam 5 Gutt insulin sensitivity index	2,146	25.7 \pm 7.47
Exam 5 waist circumference (inches)	2,394	36.5 \pm 5.65
Exam 5 HOMA-B β -cell secretion	2,258	339.7 \pm 269.96
Unrelated participants	1,436	—
Pedigrees	282	—
Sibpairs	1,004	—
Avuncular pairs	114	—
Cousin pairs	632	—

the characterization of this association to quantitative insulin-related traits, assess the effect of adiposity on these associations, and determine whether the association stems from K121Q or another variant in linkage disequilibrium with it.

RESEARCH DESIGN AND METHODS

Population samples. We used data from the Framingham Heart Study (FHS) to study associations between *ENPP1* variants and quantitative glycemic traits. The FHS is a community-based, multigenerational, longitudinal study of cardiovascular disease and its risk factors, including diabetes. The FHS comprises the original cohort, offspring, and generation 3 studies. Subjects described in the present analysis include 2,511 individuals from the FHS offspring cohort. In this analysis, our principal diabetes-related quantitative traits come from offspring examination 5 (1991–1994), where data from a 75-g oral glucose tolerance test (OGTT) is available for all offspring without diagnosed diabetes. The study was approved by Boston University's institutional review board, and written informed consent, including consent for genetic analyses, was obtained for all study participants. The demographic characteristics of the FHS study population are presented in Table 1.

An extensive array of diabetes-related quantitative traits has been collected in the FHS. Diabetes-related quantitative traits measured in this study include: A1C, fasting plasma glucose (FPG), fasting insulin, insulin resistance by homeostasis model assessment (HOMA-IR), percent β -cell function by homeostasis model assessment (HOMA-B) (14), Gutt's 0- to 120-min insulin sensitivity index (15), and the time-averaged mean FPG level over exams 3–7 comprising 16 years (mean FPG). Laboratory methods for all quantitative traits have been described previously (16).

We used 2003 American Diabetes Association clinical criteria to define diabetes, where a case was defined as use of oral hypoglycemic or insulin therapy or a FPG \geq 7.0 mmol/l at the index exam and \geq 7.0 mmol/l on at least one prior exam.

SNP selection. We targeted a genomic region from ~20 kb upstream to ~10 kb downstream of *ENPP1*. We first downloaded Phase 2 HapMap (www.hapmap.org) genotypes for the CEU population (accessed January 2006). We genotyped the previously reported non-HapMap SNP rs1799774 in the HapMap CEU samples to include it in its haplotype structure. We examined these 167 HapMap SNPs in Haploview (<http://www.broad.mit.edu/edu/mpg/haploview/>) and found that 95 passed quality control filters, including genotyping call rate $>$ 75%, Hardy-Weinberg equilibrium ($P > 0.001$), and absence of Mendelian errors. We attempted to capture all remaining working variants with minor allele frequency (MAF) \geq 5% using *Tagger* (<http://www.broad.mit.edu/mpg/tagger/>), using a pairwise approach, setting an $r^2 \geq 0.8$, and forcing in the three previously reported SNPs (K121Q, rs1799774, and rs7754561). This procedure yielded 39 SNPs tagging the region, including rs1799774. We genotyped these 39 SNPs (and an additional SNP, rs7773477, whose MAF is 4.5% in Framingham and is located at the 3' intron-exon junction of exon 2) in the FHS samples. Because seven SNPs failed genotyping in these initial FHS

samples, we repeated the tagging procedure forcing in all successful 32 SNPs as tags: this yielded seven new SNPs, which were genotyped in the FHS samples for a total of 40 SNPs (39 tags and rs7773477).

Genotyping. Genotyping was performed by allele-specific primer extension of multiplex-amplified products with detection by matrix-assisted laser desorption ionization–time of flight mass spectroscopy on an iPLEX Sequenom platform. Average genotyping call rates were 97.7%, the minimum call rate was 94.7%, and the average consensus rate based on 254 duplicate samples was 99.5%.

Statistical analysis. The quantitative traits were regressed against covariates in order to produce Studentized residuals. Two models were used: the first with sex, age, and age² covariate adjustment, and the second added BMI (kg/m²) to the other covariates to examine the strength of the subsequent SNP associations when adjusted for obesity. We adjusted for both age and age² to allow for a nonlinear trend over time. The covariates from offspring exam 5 were used for all the traits except for mean FPG, for which we used the 16-year average of each covariate.

The association between each residual and each SNP was assessed using a linear mixed effects (LME) model implemented in SOLAR (17) to account for the within-family correlation. Each SNP was included in a model as a fixed effect with additive coding, although additional dominant and recessive coding were evaluated to examine the association of rs1044498 (K121Q) with the quantitative traits. The models included random effects to account for the covariance between family members; the covariance structure was determined by the degree of relatedness between each relative pair (17).

The role of BMI in the association between rs1044498 (K121Q) and the quantitative traits was further examined in LME models of the age-, age²-, and sex-adjusted residual with K121Q, BMI, and an interaction term between K121Q and BMI as covariates.

To assess the association of each SNP with the type 2 diabetes phenotype, we used Cox proportional hazards survival analysis with diabetes as the outcome and the survival time as the age at the exam in which diabetes was determined. The survival time of individuals without diabetes was the age at their last exam. The model was implemented with the survival package in R (18), with the same adjustments as in the LME models with covariates taken at the first exam. Trait correlation among siblings was modeled with a frailty term in the survival model (19).

To assess whether positive association signals were due to linkage disequilibrium with K121Q or were independent, we added the SNPs to LME models already containing K121Q. If the signals were independent of K121Q, we expected that they would remain significant in these models. Alternatively, if both K121Q and the other SNPs became nonsignificant, we would conclude that the signal in the other SNPs was not independent from K121Q.

Our study was formulated around a single primary hypothesis: we intended to replicate the association of K121Q with hyperglycemia as captured by diabetes-related traits and, if such association was confirmed, perform further covariate adjustment for improved characterization and additional fine-mapping to determine the true source of the association signal. We have thus tested a unique SNP for association with several components of one composite trait (hyperglycemia), which is reflected in multiple correlated measures. We believe this primary hypothesis should not be seen as making multiple unrelated comparisons, and we therefore chose a nominal P value of 0.05 to indicate statistical significance.

RESULTS

A linkage disequilibrium plot showing the completed haplotype structure of the *ENPP1* locus is presented in the Supplemental Figure in the online appendix, which is available at <http://dx.doi.org/10.2337/db08-0266>. The *ENPP1* gene region contains a high degree of linkage disequilibrium. From the initial set of 167 SNPs, 96% of the 95 common variants with a MAF \geq 5% were captured with an r^2 value \geq 0.8 (and 100% with an r^2 value \geq 0.7) by a set of 39 tag SNPs using single-marker (pairwise) tests. The list of the 39 successful tag SNPs used in this analysis, with chromosomal position, major allele, and MAF in both the HapMap and Framingham population, is presented in Table 2. The list of 95 captured SNPs with their tags is listed in the online appendix (Supplemental Table 1).

We examined whether individual SNPs in *ENPP1* were associated with hyperglycemic and insulin resistance traits in the FHS population. We first focused our attention on our principal polymorphism of interest, rs1044498

TABLE 2
Tag SNPs genotyped in the FHS sample

SNP	Position (NCBI 35)	CEU		FHS	
		M/m	MAF	M/m	MAF
rs7752279	132154028	G/A	0.42	G/A	0.44
rs9493099	132155096	T/C	0.27	T/C	0.29
rs9493100	132156774	C/T	0.09	C/T	0.10
rs13211931	132165417	G/T	0.05	G/T	0.05
rs11154643	132166495	C/G	0.07	C/G	0.06
rs6935458	132168013	A/G	0.11	A/G	0.11
rs6569759	132174809	A/G	0.50	G/A	0.48
rs943004	132182569	G/A	0.06	G/A	0.07
rs7756163	132184356	T/C	0.39	T/C	0.38
rs12201710	132184591	G/A	0.22	G/A	0.25
rs1409182	132185636	G/A	0.16	G/A	0.12
rs9402345	132185906	G/A	0.10	G/A	0.11
rs9375830	132188213	G/A	0.22	G/A	0.20
rs6917903	132189309	G/C	0.38	G/C	0.42
rs1409181	132190993	G/C	0.48	C/G	0.47
rs2021966	132192132	T/C	0.44	T/C	0.46
rs9372999	132194845	C/A	0.10	C/A	0.12
rs858338	132194900	G/T	0.21	G/T	0.18
rs858339	132195590	T/A	0.32	T/A	0.29
rs703184	132196688	C/G	0.15	C/G	0.13
rs7775386	132198842	C/T	0.15	C/T	0.16
rs6916495	132201958	C/T	0.11	C/T	0.12
rs858342	132202336	A/G	0.27	A/G	0.25
rs858345	132205310	A/G	0.43	A/G	0.42
rs4141767	132206700	A/G	0.07	A/G	0.11
rs9402348	132209369	T/G	0.28	T/G	0.24
rs1044498*	132214061	A/C	0.12	A/C	0.17
rs9402349	132226801	A/C	0.12	A/C	0.12
rs9493116	132242326	A/G	0.05	A/G	0.07
rs7768480	132245125	A/G	0.06	A/G	0.11
rs1799774	132245167	T/del	0.33	T/del	0.25
rs7767111	132249978	G/A	0.09	G/A	0.06
rs1974201	132252814	C/G	0.10	C/G	0.23
rs7754561	132254387	A/G	0.20	A/G	0.28
rs9493120	132254694	G/A	0.06	G/A	0.06
rs9493121	132254883	A/G	0.09	A/G	0.05
rs1510	132256615	G/C	0.15	G/C	0.12
rs7753048	132259380	C/T	0.10	C/T	0.12
rs9373000	132263399	A/G	0.19	A/G	0.28

Data are position, major (M) and minor (m) nucleotides, and MAFs for all 39 tag SNPs for HapMap (CEU) and Framingham (FHS) populations. *K121Q SNP.

(K121Q), using three different genetic models: additive, dominant, and recessive. Table 3 presents mean trait levels for each genotypic group, with P values for association with K121Q before and after adjustment for BMI. Several associations with insulin resistance traits reached nominal levels of significance: specifically, under the additive model, the Q allele was associated with higher FPG ($P = 0.01$), A1C ($P = 0.006$), fasting insulin ($P = 0.006$), and HOMA-IR ($P = 0.006$); all of these associations remained significant after adjusting for BMI. Similar P values were obtained under the dominant genetic model. In this population sample, there were no differences in mean trait value across genotypic groups at *ENPP1* K121Q for BMI ($P = 0.32$) or waist circumference ($P = 0.64$), both tested as continuous traits. When we compared the distribution of genotypes at this locus across individuals who were of normal weight (BMI <25 kg/m²), overweight (BMI 25–30 kg/m²), or obese (BMI >30 kg/m²), we found no association of K121Q with obesity as a categorical trait ($P = 0.66$). We also found no significant deviation from the null

hypothesis of no association when our cohort was divided by BMI cutoffs at 25, 30, and 35 kg/m² (data not shown).

We then explored whether these consistent associations might be driven by other polymorphisms in the region. Table 4 displays the *ENPP1* SNPs for which we detected nominally significant associations with any of the glycemic traits under study. Figure 1A (glucose-related traits) and B (insulin-related traits) display the P values for rs1044498 (K121Q) in comparison with those obtained for other SNPs across the genomic segment. Although K121Q was the SNP that showed the strongest association with fasting insulin and HOMA-IR (Fig. 1B), two other SNPs (rs7775386 and rs7773477, located in intron 1 and at the exon 2-intron 2 junction, respectively) achieved similar P values for associations with FPG and A1C; these two SNPs were also nominally associated with HOMA-IR (Table 4). To determine whether the effects of rs7775386 and rs7773477 were independent from K121Q or produced an association signal simply because they are in tight linkage disequilibrium with K121Q, we calculated the r^2 among those SNPs

TABLE 3
Association between rs1044498 (K121Q) and diabetes-related quantitative traits

Trait	KK	KQ	QQ	Percent variance explained	<i>P</i> value		
					Additive	Recessive	Dominant
<i>n</i>	1,982	695	74				
FPG (mg/dl)	99 ± 23.9	101 ± 29.6	107 ± 43.0	0.17 (0.11)	0.01 (0.02)	0.07 (0.16)	0.02 (0.03)
A1C (%)	5.39 ± 0.93	5.48 ± 1.02	5.72 ± 1.24	0.40 (0.30)	0.006 (0.01)	0.03 (0.03)	0.02 (0.03)
Mean FPG (mg/dl)	99.1 ± 19.92	99.6 ± 21.23	101 ± 21.5	0.005*	0.21 (0.26)	0.42 (0.63)	0.25 (0.27)
Fasting insulin (μU/ml)	29.5 ± 11.57	31.3 ± 13.87	31.2 ± 12.09	0.32 (0.22)	0.006 (0.01)	0.58 (0.96)	0.003 (0.006)
HOMA-IR	7.5 ± 4.71	8.06 ± 5.43	8.05 ± 4.37	0.29 (0.19)	0.006 (0.01)	0.56 (0.95)	0.004 (0.005)
HOMA-B	343.8 ± 179.4	329.1 ± 444.7	336.8 ± 136.6	0.04 (0.03)	0.40 (0.49)	—	—
Gutt's ISI	25.8 ± 7.36	25.4 ± 7.76	26.3 ± 7.42	0.03 (0.01)	0.31 (0.42)	0.29 (0.15)	0.12 (0.15)
Waist circumference (inches)	36.5 ± 5.55	36.4 ± 5.93	37.6 ± 6.01	0.02 (0.04)	0.64 (0.35)	0.43 (0.93)	0.80 (0.30)
BMI (kg/m ²)	27.4 ± 4.83	27.5 ± 5.19	28.4 ± 6.26	0.06	0.32	0.42	0.40

All quantitative trait values are unadjusted means ± SD, with *P* values without parentheses adjusted for sex and age and *P* values in parentheses additionally adjusted for BMI. Associations between rs1044498 (K121Q) and selected quantitative metabolic traits in the FHS, with *P* values for the additive, recessive, and dominant genetic models are shown. The major (A) and minor (C) alleles code for the amino acids lysine (K) and glutamine (Q), respectively. The MAF is 15% in Framingham. Mean FPG, FPG averaged over exams 3–7 comprising 16 years; Gutt's ISI, Gutt's insulin sensitivity index. *The variance due to K121Q was not estimable because of instability.

in a subset of unrelated FHS participants. The *r*² between K121Q and rs7775386 was 0.664, and between K121Q and rs7773477 was 0.285 (Table 4); however, given the high degree of relatedness within FHS pedigrees, these linkage disequilibrium measures obtained from unrelated participants may be an underestimation of the true correlation between SNPs within the analytic dataset, where, among related people, large chromosomal regions are expected to be identical by descent. We therefore also used LME models to examine simultaneously the effects of the three strongest association signals (K121Q, rs7773477, and rs7775386). Although the association of rs7773477 with FPG remained nominally significant after addition of rs7775386 to the model, statistical significance disappeared after inclusion of K121Q to models that contained either rs7773477 or rs7775386. This indicates that the associations of these SNPs with diabetes-related quantitative traits are likely accounted for by their linkage disequi-

librium with K121Q and that the latter is giving the strongest common variant association signal in the region.

Supplemental Table 2 lists all the data for each polymorphism and quantitative traits examined. There was no significant association between any variant in *ENPP1* and BMI or waist circumference. There was no significant relationship between the non-HapMap SNP rs1799774 (which codes for a T/del change) and any insulin resistance trait. Other than a nominal *P* value of 0.02 for rs7775386, there was no significant association between K121Q or any other variant and risk for incident diabetes.

Finally, we also examined the interaction between K121Q and BMI because of preliminary evidence suggesting that the effect of the Q allele may be modified by an increase in adiposity. There was a nominally significant interaction between genotype at *ENPP1* K121Q and BMI for the associations of the SNP with FPG (interaction *P* value = 0.008, β estimate = 0.017) and HOMA-IR (inter-

TABLE 4
Nominally significant associations (*P* < 0.05) of selected *ENPP1* SNPs with diabetes-related quantitative traits

SNP (MM/Mm/mm)	Alleles (M/m)	MAF	<i>r</i> ²	Trait	MM	Mm	mm	<i>P</i> value
rs7752279 (926/1,343/528)	G/A	0.43	0.106	A1C	5.38 ± 0.89	5.42 ± 0.95	5.53 ± 1.14	0.01 (0.02)
rs9493099 (1,375/1,164/225)	T/C	0.29	0.026	A1C	5.4 ± 0.94	5.43 ± 0.98	5.55 ± 1.09	0.046
rs13211931 (2,540/224/6)	G/T	0.04	0.063	Fasting insulin	30.3 ± 12.15	29.9 ± 12.46	29.4 ± 12.37	(0.046)
				Fasting insulin	29.9 ± 11.96	31.8 ± 15.34	34.7 ± 11.1	0.04
rs7775386 (2,031/642/55)	C/T	0.14	0.664	FPG	99 ± 23.4	102 ± 33.1	103 ± 35.5	0.005 (0.004)
				A1C	5.39 ± 0.9	5.53 ± 1.16	5.64 ± 1.05	0.004 (0.005)
				Mean FPG	98.8 ± 19.56	100.9 ± 23.16	99.7 ± 20.67	0.03 (0.02)
				HOMA-IR	7.5 ± 4.78	8 ± 5.4	7.8 ± 4.12	0.04 (0.03)
rs4141767 (2,230/489/34)	A/G	0.10	0.591	Fasting insulin	29.7 ± 11.71	31.3 ± 14.23	32.6 ± 13.07	0.02
rs7773477 (2,509/235/7)	G/T	0.05	0.285	FPG	99 ± 24.8	106 ± 40.8	103 ± 13.6	0.002 (0.001)
rs9493116 (2,377/343/20)	A/G	0.07	0.410	HOMA-IR	7.6 ± 4.94	8.1 ± 4.94	8.8 ± 4.17	(0.04)
				A1C	5.41 ± 0.95	5.56 ± 1.15	5.58 ± 0.54	0.03 (0.04)
rs1510 (2,105/608/30)	G/C	0.12	0.026	A1C	5.45 ± 1	5.33 ± 0.85	5.75 ± 1.16	(0.048)

All quantitative trait values are crude means ± SD, with *P* values without parentheses adjusted for sex and age and *P* values in parentheses additionally adjusted for BMI. Associations between SNPs (listed in order of increasing chromosomal position, with genotype counts in parentheses following the rs number) and phenotypic traits that had nominal *P* values < 0.05 using an additive genetic model are shown. The MAFs are based on data from FHS unrelated participants. The extent of linkage disequilibrium of each SNP in relation to rs1044498 (K121Q) is shown by presenting *r*² values obtained from the unrelated subset of our FHS sample. M, major allele; m, minor allele; mean FPG, FPG averaged over exams 3–7 comprising 16 years.

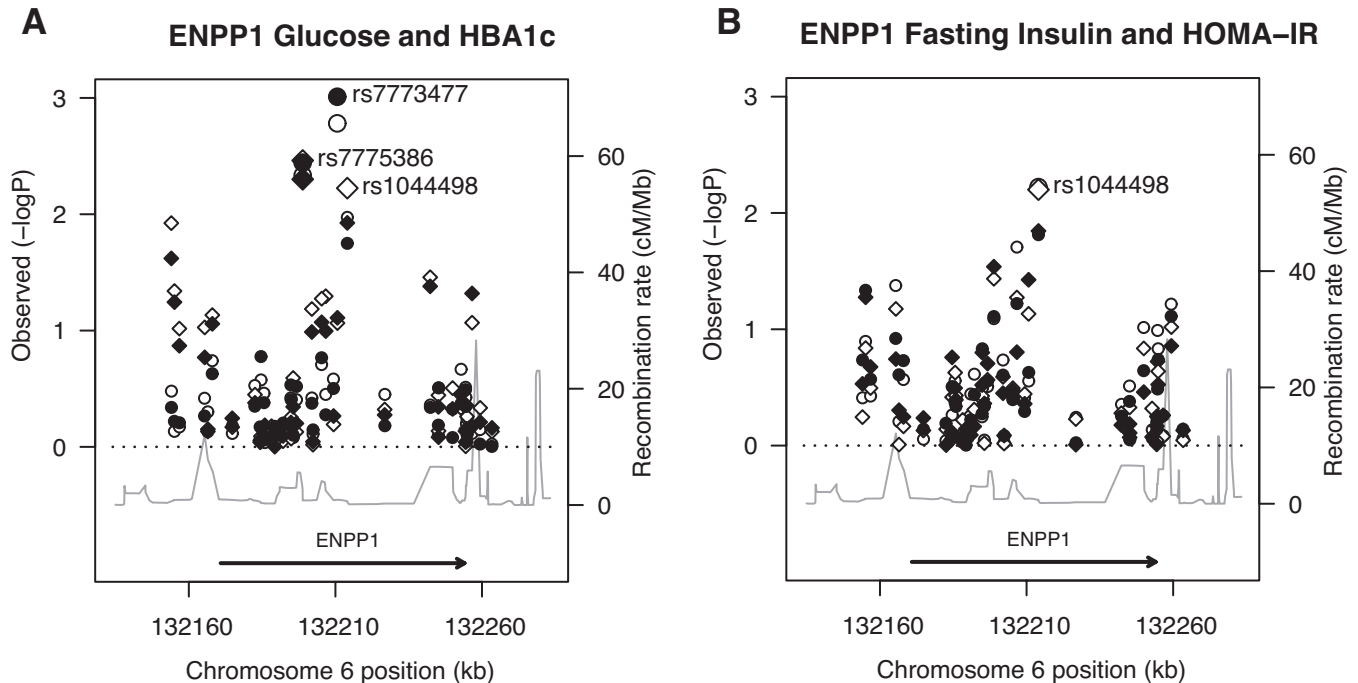


FIG. 1. A: Negative log base 10 of the P value for genetic associations with FPG (circles) and glycated hemoglobin (diamonds) under the additive model (left y -axis) graphed versus SNPs in the *ENPP1* region arranged by chromosomal position (x -axis). The continuous line marked by the right y -axis indicates the recombination rate. The *ENPP1* gene is shown by the horizontal arrow at the bottom of the plot. Open symbols indicate traits adjusted for sex and age; closed symbols indicate additional adjustment for BMI. **B:** Negative log base 10 of the P value for genetic associations with fasting insulin (circles) and insulin resistance by HOMA (diamonds) under the additive model (left y -axis) graphed versus SNPs in the *ENPP1* region arranged by chromosomal position (x -axis). The continuous line marked by the right y -axis indicates the recombination rate. The *ENPP1* gene is shown by the horizontal arrow at the bottom of the plot. Open symbols indicate traits adjusted for sex and age; closed symbols indicate additional adjustment for BMI.

action P value = 0.014, β estimate = 0.016). This indicates a stronger genetic association of the Q allele with insulin resistance traits among people who have a higher BMI.

DISCUSSION

The association of the K121Q polymorphism in *ENPP1* with insulin resistance and type 2 diabetes has been controversial. Regarding insulin resistance, Pizzuti et al. (2) found that nonobese, nondiabetic Q allele carriers were more insulin resistant than KK homozygotes, as defined both by OGTT and the euglycemic clamp. Subsequent studies reported both positive (20) and negative evidence (10) of association with insulin resistance. For type 2 diabetes, an initial positive result of association by Pizzuti et al. (2) was followed by replication in several independent studies (3–5) and confirmation in partial meta-analyses (10,12,21); however, three very large association studies (including one by members of our group) that comprised several thousand samples in other populations of European descent failed to reproduce the association, despite apparently adequate power to do so (10–12). In addition, five high-density genome-wide association studies (in samples that partially overlap those studied previously) have not reported a robust association at this locus (22–26). Nevertheless, a recent comprehensive meta-analysis by members of our group (13) documented a nominally significant ($P = 0.005$) association of the K121Q QQ genotype with type 2 diabetes in populations of European ancestry under a recessive model. The association appeared to be modified by BMI. The very modest effect of a single Q allele on the diabetes phenotype (summary odds ratio ~ 1.08), the initial overestimation of this risk due to the phenomenon of the “winner’s curse,”

the lack of power of subsequent studies to explore alternative genetic models, the confounder introduced by the widely divergent allele frequencies of the K121Q polymorphism in European and African populations, and the noninclusion of a relevant covariate (BMI) in the assessment of its contribution to diabetes risk may explain, in part, the conflicting results thus far reported in the literature.

Given the new evidence suggesting a real association of this polymorphism with type 2 diabetes and functional reports implicating *ENPP1* and its polymorphism K121Q in mechanisms of insulin resistance (1,8,27–29), we decided to examine its association with insulin resistance traits in a homogeneous population cohort previously unexamined for this variant. In addition, we aimed to determine whether any association, if present, stemmed from *ENPP1* K121Q or another polymorphism in the region, and we aimed to characterize the putative modifying effect of BMI. The Framingham offspring cohort is particularly advantageous for such a study: 1) As a population cohort, it is free of ascertainment biases, which may restrict the range of variation around a quantitative glycemic or obesity trait; 2) it is an ethnically homogeneous sample; 3) it has undergone extensive phenotypic characterization in a longitudinal fashion; and 4) its family component reduces the risk of population stratification.

In this study, we captured most of the common genetic variation in *ENPP1* and studied its putative association with glycemic traits in a comprehensive manner. Using the FHS population to characterize the common variation across the *ENPP1* locus, we confirmed the association of the Q allele in *ENPP1* K121Q with hyperglycemia, as demonstrated by elevated FPG and A1C, under both the

additive and dominant models. This supports the hypothesis that only one copy of the Q allele is necessary to cause an effect on quantitative phenotypes. We also demonstrated that the effect of K121Q on hyperglycemia is likely mediated via insulin resistance, because the Q allele is also associated with elevated fasting insulin and HOMA-IR. The lack of an association with the Gutt insulin sensitivity index may reflect differences in insulin resistance at the tissue level (basal hepatic insulin resistance vs. peripheral glucose disposal after an oral load) or indicate an imperfect correlation of these surrogate measures with true insulin resistance. Although other polymorphisms in the region showed similar associations with glycemic traits, our regression analysis demonstrated that the effect of two other significant SNPs was removed when incorporating K121Q in the models, suggesting that K121Q is the variant with the actual effect on glycemic and insulin resistance traits, as might be predicted by its impact on amino acid sequence. Because these associations represent confirmation of previous findings and other variants in the region were genotyped as a fine-mapping exercise, we do not believe statistical correction for the multiple variants analyzed is warranted.

Having established the association between *ENPP1* K121Q and hyperglycemia, we explored the interaction between K121Q and BMI because of preliminary evidence that the effect of the Q allele on glycemic traits is mediated by an increase in adiposity (3,5,7,13,30) and suggestions that this variant may also contribute to obesity traits (5,6,31–33). Although we observed no association of *ENPP1* K121Q with BMI or waist circumference, our interaction analysis supports the observation that a higher BMI strengthens the association of this particular polymorphism with elevated insulin resistance and glucose levels. This finding is consistent with the hypothesis that the net effect of the *ENPP1* Q121 variant in modulating the risk of insulin resistance and related clinical outcomes is barely detectable in lean individuals while becoming more evident in the context of an “obesogenic” background, where the deleterious effect of the Q121 variant on the glucose disposal of skeletal muscle may be superimposed on that exerted by high BMI itself (30). This model is consistent with our previous meta-analysis in which we noted that the Q121 variant confers a modest risk of type 2 diabetes in whites with a greater effect as BMI increases. Such BMI \times genotype interactions may be particularly evident with regard to genes that cause hyperglycemia by augmenting insulin resistance rather than in those that contribute to diabetes risk by diminishing insulin secretion. Because of the relationship between obesity and insulin resistance, there is more likely to be a correlation between increased adiposity and the effects of genes that modify insulin action.

In summary, our study adds further evidence in support of a potential causative role of the *ENPP1* gene in the inheritance and pathophysiology of type 2 diabetes. We found that the Q allele of K121Q in *ENPP1* appears to be the common variant most strongly associated with diabetes-related traits in whites, confirmed that K121Q is associated with hyperglycemia and a greater degree of insulin resistance, and found an adiposity-SNP interaction, with a greater strength of association of K121Q with diabetes-related quantitative traits in people with obesity.

ACKNOWLEDGMENTS

E.S.S. is supported by National Institutes of Health (NIH) Training Grant T32 GM007748 Training Grant in Genetics. J.B.M. has received an American Diabetes Association Career Development Award, National Institute of Diabetes and Digestive and Kidney Diseases Grant K24-DK-080140, and research grants from GlaxoSmithKline and sanofi-aventis. J.C.F. has received NIH Research Career Award K23-DK-65978-04. This work has been supported by the National Heart, Lung, and Blood Institute's FHS (Contract N01-HC-25195) and by the Boston University Linux Cluster for Genetic Analysis (LinGA) funded by NIH National Center for Research Resources Shared Instrumentation Grant 1S10-RR-163736-01A1.

REFERENCES

- Maddux B, Goldfine I: Membrane glycoprotein PC-1 inhibition of insulin receptor function occurs via direct interaction with the receptor α -subunit. *Diabetes* 49:13–19, 2000
- Pizzuti A, Frittitta L, Argiolas A, Baratta R, Goldfine I, Bozzali M, Ercolino T, Scarlato G, Iacoviello L, Vigneri R, Tassi V, Trischitta V: A polymorphism (K121Q) of the human glycoprotein PC-1 gene coding region is strongly associated with insulin resistance. *Diabetes* 48:1881–1884, 1999
- Abate N, Chandalia M, Satija P, Adams-Huet B, Grundy SM, Sandeep S, Radha V, Deepa R, Mohan V: ENPP1/PC-1 K121Q polymorphism and genetic susceptibility to type 2 diabetes. *Diabetes* 54:1207–1213, 2005
- Bacci S, Ludovico O, Prudente S, Zhang Y-Y, Di Paola R, Mangiacotti D, Raouf A, Nolan D, Duffy J, Fini G, Salvemini L, Amico C, Vigna C, Pellegrini F, Menzaghi C, Doria A, Trischitta V: The K121Q polymorphism of the *ENPP1/PC-1* gene is associated with insulin resistance/atherogenic phenotypes, including earlier onset of type 2 diabetes and myocardial infarction. *Diabetes* 54:3021–3025, 2005
- Meyre D, Bouatia-Naji N, Tounian A, Samson C, Lecoeur C, Vatin V, Ghossaini M, Wachter C, Hercberg S, Charpentier G, Patsch W, Pattou F, Charles MA, Tounian P, Clement K, Jouret B, Weill J, Maddux B, Goldfine I, Walley A, Boutin P, Dina C, Froguel P: Variants of *ENPP1* are associated with childhood and adult obesity and increase the risk of glucose intolerance and type 2 diabetes. *Nat Genet* 8:863–867, 2005
- Meyre D, Bouatia-Naji N, Vatin V, Veslot J, Samson C, Tichet J, Marre M, Balkau B, Froguel P: *ENPP1* K121Q polymorphism and obesity, hyperglycaemia and type 2 diabetes in the prospective DESIR Study. *Diabetologia* 50:2090–2096, 2007
- Bochenski J, Placha G, Wanic K, Malecki M, Sieradzki J, Warram JH, Krowleski AS: New polymorphism of *ENPP1 (PC-1)* is associated with increased risk of type 2 diabetes among obese individuals. *Diabetes* 55:2626–2630, 2006
- Costanzo B, Trischitta V, Di Paola R, Spampinato D, Pizzuti A, Vigneri R, Frittitta L: The Q allele variant (GLN121) of membrane glycoprotein PC-1 interacts with the insulin receptor and inhibits insulin signaling more effectively than the common K allele variant (LYS121). *Diabetes* 50:831–836, 2001
- Goldfine ID, Maddux BA, Youngren JF, Reaven G, Accili D, Trischitta V, Vigneri R, Frittitta L: The role of membrane glycoprotein plasma cell antigen 1/ectonucleotide pyrophosphatase phosphodiesterase 1 in the pathogenesis of insulin resistance and related abnormalities. *Endocr Rev* 29:62–75, 2008
- Grarup N, Urhammer S, Ek J, Albrechtsen A, Glumer C, Borch-Johnsen K, Jorgensen T, Hansen T, Pedersen O: Studies of the relationship between the *ENPP1* K121Q polymorphism and type 2 diabetes, insulin resistance and obesity in 7,333 Danish white subjects. *Diabetologia* 49:2097–2104, 2006
- Lyon HN, Florez JC, Bersaglieri T, Saxena R, Winckler W, Almgren P, Lindblad U, Tuomi T, Gaudet D, Zhu X, Cooper R, Ardlie KG, Daly MJ, Altshuler D, Groop L, Hirschhorn JN: Common variants in the *ENPP1* gene are not reproducibly associated with diabetes or obesity. *Diabetes* 55: 3180–3184, 2006
- Weedon MN, Shields B, Hitman G, Walker M, McCarthy MI, Hattersley AT, Frayling TM: No evidence of association of *ENPP1* variants with type 2 diabetes or obesity in a study of 8,089 U.K. Caucasians. *Diabetes* 55:3175–3179, 2006
- McAteer JB, Prudente S, Bacci S, Lyon HN, Hirschhorn JN, Trischitta V, Florez JC: The *ENPP1* K121Q polymorphism is associated with type 2

- diabetes in European populations: evidence from an updated meta-analysis in 42,042 subjects. *Diabetes* 57:1125–1130, 2008
14. Matthews DR, Hosker JP, Rudenski AS, Naylor BA, Treacher DF, Turner RC: Homeostasis model assessment: insulin resistance and beta-cell function from fasting plasma glucose and insulin concentrations in man. *Diabetologia* 28:412–419, 1985
 15. Gutt M, Davis CL, Spitzer SB, Llabre MM, Kumar M, Czarniecki EM, Schneiderman N, Skyler JS, Marks JB: Validation of the insulin sensitivity index ($ISI_{0,120}$): comparison with other measures. *Diabetes Res Clin Pract* 47:177–184, 2000
 16. Meigs JB, Nathan DM, Wilson PWF, Cupples LA, Singer DE: Metabolic risk factors worsen continuously across the spectrum of nondiabetic glucose tolerance: the Framingham Offspring Study. *Ann Intern Med* 128:524–533, 1998
 17. Almasy L, Blangero J: Multipoint quantitative-trait linkage analysis in general pedigrees. *Am J Hum Genet* 62:1198–1211, 1998
 18. Therneau T, Grambsch P: *Modeling Survival Data: Extending the Cox Model*. Springer, 2001
 19. Therneau TM, Grambsch PM, Pankratz VS: Penalized survival models and frailty. *J Comput Graph Stat* 12:156–175, 2003
 20. Abate N, Carulli L, Cabo-Chan A Jr, Chandalia M, Snell PG, Grundy SM: Genetic polymorphism PC-1 K121Q and ethnic susceptibility to insulin resistance. *J Clin Endocrinol Metab* 88:5927–5934, 2003
 21. Abate N, Chandalia M, Di Paola R, Foster D, Grundy S, Trischitta V: Mechanisms of disease: ectonucleotide pyrophosphatase phosphodiesterase 1 as a 'gatekeeper' of insulin receptors. *Nat Clin Pract Endocrinol Metab* 2:694–701, 2006
 22. Scott L, Mohlke K, Bonnycastle L, Willer CJ, Li Y, Duren WL, Erdos MR, Stringham HM, Chines PS, Jackson AU, Prokunina-Olsson L, Ding C-J, Swift AJ, Narisu N, Hu T, Pruim R, Xiao R, Li X-Y, Conneely KN, Riebow NL, Sprau AG, Tong M, White PP, Hetrick KN, Barnhart MW, Bark CW, Goldstein JL, Watkins L, Xiang F, Saramies J, Buchanan TA, Watanabe RM, Valle TT, Kinnunen L, Abecasis GR, Pugh EW, Doheny KF, Bergman RN, Tuomilehto J, Collins FS, Boehnke M: A genome-wide association study of type 2 diabetes in Finns detects multiple susceptibility variants. *Science* 316:1341–1345, 2007
 23. Steinthorsdottir V, Thorleifsson G, Reynisdottir I, Benediktsson R, Jonsdottir T, Walters GB, Stykarsdottir U, Gretarsdottir S, Emilsson V, Ghosh S, Baker A, Snorraddottir S, Bjarnason H, Ng MCY, Hansen T, Bagger Y, Wilensky RL, Reilly MP, Adeyemo A, Chen Y, Zhou J, Gudnason V, Chen G, Huang H, Lashley K, Doumatey A, So W-Y, Ma RCY, Andersen G, Borch-Johnsen K, Jorgensen T, van Vliet-Ostaptchouk JV, Hofker MH, Wijmenga C, Christiansen C, Rader DJ, Rotimi C, Gurney M, Chan JCN, Pedersen O, Sigurdsson G, Gulcher JR, Thorsteinsdottir U, Kong A, Stefansson K: A variant in *CDKAL1* influences insulin response and risk of type 2 diabetes. *Nat Genet* 39:770–775, 2007
 24. Zeggini E, Weedon MN, Lindgren CM, Frayling TM, Elliott KS, Lango H, Timpson NJ, Perry JRB, Rayner NW, Freathy RM, Barrett JC, Shields B, Morris AP, Ellard S, Groves CJ, Harries LW, Marchini JL, Owen KR, Knight B, Cardon LR, Walker M, Hitman GA, Morris AD, Doney ASF, The Wellcome Trust Case Control Consortium, McCarthy MI, Hattersley AT: Replication of genome-wide association signals in UK samples reveals risk loci for type 2 diabetes. *Science* 316:1336–1341, 2007
 25. Diabetes Genetics Initiative of Broad Institute of Harvard and MIT, Lund University, and Novartis Institutes for BioMedical Research: Genome-wide association analysis identifies loci for type 2 diabetes and triglyceride levels. *Science* 316:1331–1336, 2007
 26. Sladek R, Rocheleau G, Rung J, Dina C, Shen L, Serre D, Boutin P, Vincent D, Belisle A, Hadjadj S, Balkau B, Heude B, Charpentier G, Hudson TJ, Montpetit A, Pshezhetsky AV, Prentki M, Posner BI, Balding DJ, Meyre D, Polychronakos C, Froguel P: A genome-wide association study identifies novel risk loci for type 2 diabetes. *Nature* 445:881–885, 2007
 27. Maddux B, Sbraccia P, Kumakura S, Sasson S, Youngren J, Fisher A, Spencer S, Grupe A, Henzel W, Stewart T: Membrane glycoprotein PC-1 and insulin resistance in non-insulin-dependent diabetes mellitus. *Nature* 373:448–451, 1995
 28. Frittitta L, Youngren J, Sbraccia P, D'Adamo M, Buongiorno A, Vigneri R, Goldfine I, Trischitta V: Increased adipose tissue PC-1 protein content, but not tumour necrosis factor-alpha gene expression, is associated with a reduction of both whole body insulin sensitivity and insulin receptor tyrosine-kinase activity. *Diabetologia* 40:282–289, 1997
 29. Frittitta L, Spampinato D, Solini A, Nosadini R, Goldfine I, Vigneri R, Trischitta V: Elevated PC-1 content in cultured skin fibroblasts correlates with decreased in vivo and in vitro insulin action in nondiabetic subjects: evidence that PC-1 may be an intrinsic factor in impaired insulin receptor signaling. *Diabetes* 47:1095–1100, 1998
 30. Bacci S, De Cosmo S, Prudente S, Trischitta V: *ENPP1* gene, insulin resistance and related outcomes. *Curr Opin Clin Nutr Metab Care* 10:403–409, 2007
 31. Matsuoka N, Patki A, Tiwari HK, Allison DB, Johnson SB, Gregersen PK, Leibel RL, Chung WK: Association of K121Q polymorphism in *ENPP1 (PC-1)* with BMI in Caucasian and African-American adults. *Int J Obes Relat Metab Disord* 30:233–237, 2006
 32. Bottcher Y, Korner A, Reinehr T, Enigk B, Kiess W, Stumvoll M, Kovacs P: *ENPP1* variants and haplotypes predispose to early onset obesity and impaired glucose and insulin metabolism in German obese children. *J Clin Endocrinol Metab* 91:4948–4952, 2006
 33. Prudente S, Chandalia M, Morini E, Baratta R, Dallapiccola B, Abate N, Frittitta L, Trischitta V: The Q121/Q121 genotype of *ENPP1/PC-1* is associated with lower BMI in non-diabetic whites. *Obesity* 15:1–4, 2007