

Effector Genomics Accelerates Discovery and Functional Profiling of Potato Disease Resistance and *Phytophthora infestans* Avirulence Genes

Vivianne G. A. A. Vleeshouwers^{1*}, Hendrik Rietman¹, Pavel Krenek¹, Nicolas Champouret¹, Carolyn Young², Sang-Keun Oh², Miqia Wang¹, Klaas Bouwmeester³, Ben Vosman¹, Richard G. F. Visser¹, Evert Jacobsen¹, Francine Govers³, Sophien Kamoun^{2,4}, Edwin A. G. Van der Vossen¹

1 Wageningen UR Plant Breeding, Wageningen, The Netherlands, **2** Department of Plant Pathology, Ohio State University, Ohio Agricultural Research and Development Center, Wooster, Ohio, United States of America, **3** Laboratory of Phytopathology, Wageningen University, Wageningen, The Netherlands, **4** The Sainsbury Laboratory, John Innes Center, Norwich, United Kingdom

Abstract

Potato is the world's fourth largest food crop yet it continues to endure late blight, a devastating disease caused by the Irish famine pathogen *Phytophthora infestans*. Breeding broad-spectrum disease resistance (*R*) genes into potato (*Solanum tuberosum*) is the best strategy for genetically managing late blight but current approaches are slow and inefficient. We used a repertoire of effector genes predicted computationally from the *P. infestans* genome to accelerate the identification, functional characterization, and cloning of potentially broad-spectrum *R* genes. An initial set of 54 effectors containing a signal peptide and a RXLR motif was profiled for activation of innate immunity (avirulence or Avr activity) on wild *Solanum* species and tentative Avr candidates were identified. The RXLR effector family IpiO induced hypersensitive responses (HR) in *S. stoloniferum*, *S. papita* and the more distantly related *S. bulbocastanum*, the source of the *R* gene *Rpi-blb1*. Genetic studies with *S. stoloniferum* showed cosegregation of resistance to *P. infestans* and response to IpiO. Transient co-expression of IpiO with *Rpi-blb1* in a heterologous *Nicotiana benthamiana* system identified IpiO as Avr-blb1. A candidate gene approach led to the rapid cloning of *S. stoloniferum* *Rpi-sto1* and *S. papita* *Rpi-pta1*, which are functionally equivalent to *Rpi-blb1*. Our findings indicate that effector genomics enables discovery and functional profiling of late blight *R* genes and Avr genes at an unprecedented rate and promises to accelerate the engineering of late blight resistant potato varieties.

Citation: Vleeshouwers VGAA, Rietman H, Krenek P, Champouret N, Young C, et al. (2008) Effector Genomics Accelerates Discovery and Functional Profiling of Potato Disease Resistance and *Phytophthora infestans* Avirulence Genes. PLoS ONE 3(8): e2875. doi:10.1371/journal.pone.0002875

Editor: Hany A. El-Shemy, Cairo University, Egypt

Received: April 1, 2008; **Accepted:** July 8, 2008; **Published:** August 6, 2008

Copyright: © 2008 Vleeshouwers et al. This is an open-access article distributed under the terms of the Creative Commons Attribution License, which permits unrestricted use, distribution, and reproduction in any medium, provided the original author and source are credited.

Funding: This research was financed by WUR Plant Breeding, Wageningen. The Czech University of Agriculture has financially supported PK, and the Center of Biosystems Genomics (CBSG) has financially supported the retrieving of resistant germplasm. CY and SKO were funded by NSF Plant Genome Research Program grant DBI-0211659. SK was supported by the Gatsby Charitable Foundation.

Competing Interests: The authors have declared that no competing interests exist.

* E-mail: Vivianne.Vleeshouwers@wur.nl

Introduction

Despite more than a century of resistance breeding [1], late blight remains a major constraint for potato cultivation resulting in multibillion dollar annual losses in most regions of the world. *R* genes that mediate resistance to *P. infestans* are common and diverse in wild *Solanum* germplasm but the identification and deployment of these genes faces a number of hurdles. First, the specificity spectrum of novel late blight *R* genes cannot be assessed in the absence of diagnostic pathogen races making it impossible to discriminate between genes with similar functional activities. Second, crossing barriers, linkage drag problems and the high quality trait demands of the potato crop severely slow down the laborious process of introgression breeding [2]. Nonetheless, the recent cloning of the *R* genes *Rpi-blb1* (also known as *RB*) [3,4] and *Rpi-blb2* [5] from the sexually incompatible species *S. bulbocastanum* enabled transgenic engineering of resistant potatoes. Plants carrying these genes have now entered the commercialization pipeline and are expected to be the first GM potatoes to be cultivated in Europe for consumption purposes [6]. In contrast to

the *S. demissum*-derived race-specific *R* genes which were singly introduced and quickly overcome in the field [1], the combination of *Rpi-blb1* and *-blb2* is expected to remain effective to a broader spectrum of *P. infestans* isolates [4,5]. Indeed, stacking of *R* genes that confer resistance to a broad and complementary set of isolates promises to deliver potatoes with durable late blight resistance using genetic modification, be it through transgenic or cisgenic approaches [2,7]. However, knowledge of the pathogen targets of these *R* genes is essential for classifying them into functional and spectral categories, evaluating the likelihood of resistance durability, and devising scientifically sound stacking strategies.

Oomycete plant pathogens, such as *P. infestans*, secrete an arsenal of effector proteins that modulate host innate immunity and enable parasitic infection [8]. Although these effectors primarily function as virulence factors, specific effector molecules can also be recognized by plant R proteins in particular host genotypes resulting in activation of effector triggered immunity. In such cases, the effectors are said to have an avirulence (AVR) activity. The response induced by AVR proteins involves in most cases the hypersensitive response (HR), a form of programmed cell

death, followed by restriction of the invading pathogen [9]. The AVR proteins of oomycete plant pathogens carry a N-terminal type II secretion signal peptide, followed by a conserved RXLR motif that characterizes a domain known to function in translocating the effectors into host cells [10–12]. Inside host cells, RXLR effectors are believed to contribute to virulence, but also to activate cognate cytosolic R proteins of the NB-LRR (nucleotide binding site and leucine-rich repeat) class resulting in hypersensitive cell death and resistance [10,11]. We hypothesized that *P. infestans* RXLR effectors are candidate *Avr* genes that can be functionally profiled on *Solanum* to detect cognate *R* genes [13].

In this study, we expressed a set of 54 candidate RXLR effectors of *P. infestans* in late blight resistant *Solanum* plants and identified a variety of effector responses, some of which could be R-AVR interactions. For one of these interactions, we generated a population segregating for resistance and effector response, and determined the genetic position of the putative *R* gene in *Solanum*. We then took advantage of comparative genomics of an already cloned *R* gene to swiftly clone homologous cognate *R* genes from unrelated *Solanum* species. Effector-based identification of *R* genes combined with functional assays accelerated the cloning process of *R* genes compared to map-based or other approaches and provided insight into *R* gene redundancy within *Solanum* [14,15].

Results

Solanum species recognize a diversity of *P. infestans* effectors

As part of a wide-ranging potato improvement program, we selected ten *Solanum* genotypes belonging to eight wild species representing a wide taxonomic and phylogenetic diversity [16–18], that exhibited late blight resistance to various *P. infestans* isolates in multi-year laboratory and field trials (Table 1, Table S1). To clarify the specificity spectra of these resistant plants, we assayed

them with 54 putative effector genes predicted computationally from the *P. infestans* transcriptome to belong to the RXLR family of cytoplasmic effectors [19]. Functional high-throughput screening of effector gene elicitation of the HR in plants was performed using a *Potato virus X* (PVX) agroinfection assay optimized for *Solanum* [13]. Although this assay leads to false positives due to high expression levels of single effectors inside plant cells, PVX agroinfection results in comparable results to various low-throughput systems such as protein infiltrations [13], co-bombardment studies [20], *A. tumefaciens* co-infiltrations [20,21], and ELISA (Figure S1). We expressed the 54 RXLR effector genes (Table S2) in the 10 late blight resistant *Solanum* genotypes, as well as in three susceptible potato genotypes (Table 1, Table 2). In 36 combinations, specific RXLR effectors triggered hypersensitivity in at least one resistant but not in the susceptible genotypes (Figure 1) suggesting that these effectors might exhibit avirulence activities and activate *R* genes that are absent in the three susceptible potatoes.

Genetic analysis indicates that *Rpi-sto1* interacts with *IpiO*

To further investigate the genetic and physiological basis of the response to the candidate effectors in relation to late blight resistance in *S. stoloniferum* 17605-4 [22], we crossed this plant with the susceptible potato genotype RH89-039-16 (RH), which did not respond to any of the candidates (Table 2). We examined the parents and the F1 population for resistance to *P. infestans* and observed a near 1:1 (19 resistant : 14 susceptible) segregation ratio for all four tested isolates, suggesting inheritance of a dominant *R* gene which we designated *Rpi-sto1* (Table 3A). Subsequent inoculations of Sto17605-4 with eight additional *P. infestans* isolates always resulted in resistance suggesting a potentially broad-spectrum resistance character of *Rpi-sto1* (Table S1). To correlate the resistance to specific effector responses, we assayed the parents

Table 1. Resistance to *P. infestans* isolates in *Solanum* species.

<i>Solanum</i>					Resistance assessment		
Taxonomic group	species	spp	clone	Source	90128	IPO-C	89148-09
Bulbocastana	<i>S. bulbocastanum</i>	blb	8005-8	BGRC	Resistant	Resistant	Resistant
Pinnatisecta	<i>S. pinnatisectum</i>	pnt	17743-4	CGN	Resistant	Resistant	Resistant
Yungasensa	<i>S. chacoense</i>	chc	63055-5	BGRC	Resistant	Resistant	Resistant
Tuberosa	<i>S. avilesii</i>	avl	18256-2	CGN	Resistant	Resistant	Resistant
Tuberosa	<i>S. microdontum</i> var. <i>gigantophyllum</i>	gig	23050-2	CGN	Resistant	Resistant	Resistant
Tuberosa	<i>S. microdontum</i> var. <i>gigantophyllum</i>	gig	21342-4	CGN	Resistant	Resistant	Resistant
Tuberosa	<i>S. neorossii</i>	nrs	18000-1	CGN	Resistant	Resistant	Resistant
Tuberosa	<i>S. verrucosum</i>	ver	17768-10	CGN	Resistant	Resistant	Resistant
Longipedicellata	<i>S. stoloniferum</i>	sto	17606-2	CGN	Resistant	Resistant	Resistant
Longipedicellata	<i>S. stoloniferum</i>	sto	17605-4	CGN	Resistant	Resistant	Resistant
Tuberosa	<i>S. tuberosum</i>	tbr	Desirée-R3a	Cultivar	Susceptible	Susceptible	Resistant
Tuberosa	<i>S. tuberosum</i>	tbr	Bintje	Cultivar	Susceptible	Susceptible	Susceptible
Tuberosa	<i>S. tuberosum</i>	tbr	RH89-039-16	Breeding clone	Susceptible	Susceptible	Susceptible

Wild *Solanum* accessions from diverse taxonomic series [16–18] were retrieved from the BGRC¹ or CGN² genebanks, and assessed for resistance to the aggressive *P. infestans* isolates 90128, IPO-C and 89148-09. *R3a*-resistant Desirée [41] and susceptible potato cultivar Bintje and breeding clone RH89-039-16 were included as controls.

¹BGRC, Braunschweig Genetic Resource Center (BGRC)

²CGN, the Center for Genetic Resources, The Netherlands (CGN, <http://www.cgn.wur.nl/uk/>)

doi:10.1371/journal.pone.0002875.t001

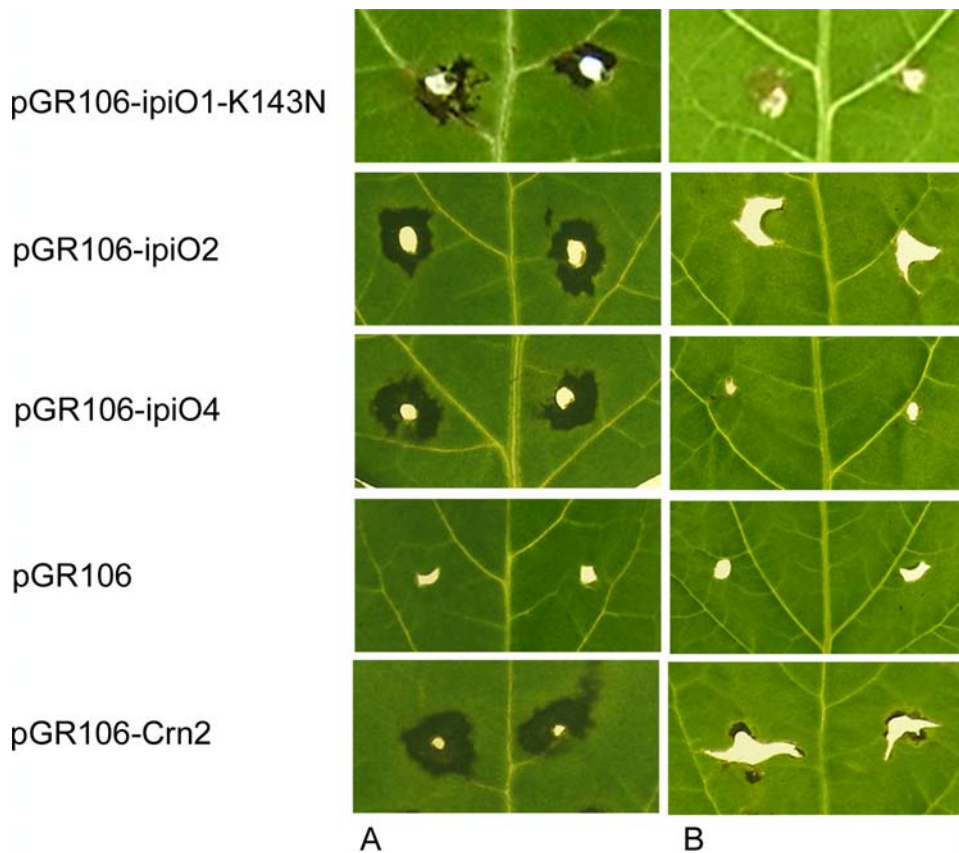


Figure 1. Specific responses to pGR106-IpiO in *S. stoloniferum* 17605-4 by PVX agroinfection. Leaves were wound-inoculated at both sides of the vein with *A. tumefaciens* strains carrying pGR106-IpiO1-K143N, -IpiO2, -IpiO4 (PexRD6, Table 2) in addition to pGR106-empty vector and -CRN2 as negative and positive controls respectively [32,40]. (A) Local cell death to pGR106-IpiO was observed in *S. stoloniferum* 17605-4, but (B) no symptoms were detected in *S. tuberosum* RH89-039-16. doi:10.1371/journal.pone.0002875.g001

and F1 progeny for segregation of displaying hypersensitivity to the candidate effectors identified earlier (Table 2, Figure 1). A 100% correlation between resistance and response to members of the PexRD6 family effector was evident (Table 3B). PexRD6 corresponds to *IpiO*, a well-studied *in planta* induced gene, that is expressed at high levels in invading hyphae [23]. *IpiO* occurs as a small gene family consisting of at least two conserved genes *IpiO1* and *IpiO2* (PexRD6-2), which differ in only 4 amino acids at the protein level [24]. PexRD6-1 is identical in amino acid sequence to *IpiO1*, except for a K to N substitution at amino acid 143 [24] (Table S2). *IpiO1*-K143N and *IpiO2* elicited cell death on the 19 resistant F1 plants but not on the 14 susceptible progeny, suggesting that these two are likely *Avr* candidates for the *Rpi-sto1* gene. Sto17605-4 also responded amongst others to PexRD6-3, corresponding to an *IpiO* variant named *IpiO4*, which differs in 22 amino acids from *IpiO1* (unpublished data, Table S2). However, no response to *IpiO4* was observed in the segregating population (Table 3A, B), as was also the case for PexRD13-1, PexRD17-2, PexRD26-2, PexRD46 and PexRD50 underlining the tentative nature of the responses observed in the high throughput PVX-based effector screen, and thus the need for further confirmation using additional experimental systems. The lack of effector response in the F1 progeny could however reflect the presence of specific dominant HR suppressors in RH89-039-16, and further genetic studies are under way. The observed response to PexRD28-1 and PexRD46 did segregate in the population, indicative for a tentative receptor-effector interaction,

but this response was as yet not related to resistance (data not shown), and we are further studying the biological relevance of this interaction.

IpiO is Avr-blb1

We noted that besides Sto17605-4, *S. bulbocastanum* genotype 8005-8 also responded to *IpiO* (Table 2). This genotype carries the previously cloned *Rpi-blb1* gene [3]. To test whether *Rpi-blb1* also recognizes *IpiO*, we co-expressed *IpiO1*, *IpiO1*-K143N, *IpiO2*, and *IpiO4* with *Rpi-blb1* in *Nicotiana benthamiana* leaves using an *Agrobacterium tumefaciens* transient assay (agroinfiltration). Three days later, hypersensitive cell death was observed in the leaf panels infiltrated with *IpiO1*, *IpiO1*-K143N, and *IpiO2* (Figure 2A), and *Rpi-blb1* but not in the controls. No cell death occurred after co-infiltration of *A. tumefaciens* strains containing *Rpi-blb1* and *IpiO4* (Figure S2). This indicates that *IpiO1*, *IpiO1*-K143N, or *IpiO2* are specifically recognized by *Rpi-blb1* suggesting that they have an *Avr-blb1* activity. These data also suggest that *Rpi-blb1* and *Rpi-sto1* recognize the same *P. infestans* effectors *IpiO1*, *IpiO1*-K143N, and *IpiO2*, but not the sequence divergent *IpiO4* (Table 3, Figure 2, Figure S2, Table S2).

Exceptionally rapid cloning of *Rpi-sto1* and *Rpi-pta1* based on *Rpi-blb1* orthology and functional equivalence

To further investigate the relationship between *Rpi-blb1* and *Rpi-sto1*, we examined the segregation of the *Rpi-blb1*-linked marker CT88 [25] in the Sto17605-4 × RH population. The CT88

Table 3. Segregation for resistance, ipiO response and genetic markers in the F1 population Sto1705-4 × RH.

Plant clone	A				B				C		
	<i>P. infestans</i> inoculation				PVX Agroinfection				Marker		
	90128	USA618	IPO-C	VK98014	ipIO1K143N	pGR106- ipIO1K143N	pGR106- ipiO2	pGR106- ipiO4	pGR106	pGR106-Crn2	CT88
Sto17605-4	R	R	R	R	+	+	+	-	-	+	+
RH	S	S	S	S	-	-	-	-	-	+	-
Offspring											
1	R	R	R	R	+	+	-	-	-	+	+
2	R	R	R	R	+	+	-	-	-	+	+
3	R	R	R	R	+	+	-	-	-	+	+
4	S	S	S	S	-	-	-	-	-	+	-
5	R	R	R	R	+	+	-	-	-	+	+
6	R	R	R	R	+	+	-	-	-	+	+
7	S	S	S	nd	-	-	-	-	-	+	-
8	R	R	R	R	+	+	-	-	-	+	+
9	S	S	S	S	-	-	-	-	-	+	-
10	R	R	R	R	+	+	-	-	-	+	+
11	R	R	R	R	+	+	-	-	-	+	+
12	R	R	R	R	+	+	-	-	-	+	+
13	R	R	R	R	+	+	-	-	-	+	+
14	R	R	R	R	+	+	-	-	-	+	+
15	R	R	R	R	+	+	-	-	-	+	+
16	R	R	R	R	+	+	-	-	-	+	+
17	S	S	S	S	-	-	-	-	-	+	-
18	S	S	S	S	-	-	-	-	-	+	-
19	S	S	S	S	-	-	-	-	-	+	-
20	S	S	S	S	-	-	-	-	-	+	-
21	R	R	R	R	+	+	-	-	-	+	+
22	nd	S	S	S	-	-	-	-	-	+	-
23	R	R	R	R	+	+	-	-	-	+	+
24	S	S	S	S	-	-	-	-	-	+	-
25	R	R	R	R	+	+	-	-	-	+	+
26	R	R	R	R	+	+	-	-	-	+	+
27	S	S	S	S	-	-	-	-	-	+	-
28	R	R	R	R	+	+	-	-	-	+	+
29	S	S	S	S	-	-	-	-	-	+	-
31	R	R	R	nd	+	+	-	-	-	+	+

Table 3. cont.

Plant clone	A			B			C			
	<i>P. infestans</i> inoculation			PVX Agroinfection			Marker			
	90128	USA618	IPO-C	VK98014	pGR106- IpiO1K143N	pGR106- IpiO2	pGR106- IpiO4	pGR106	pGR106-Crm2	CT88
Sto17605-4	R	R	R	R	+	+	+	-	+	+
RH	S	S	S	S	-	-	-	-	+	-
Offspring										
32	S	S	S	S	-	-	-	-	+	-
33	S	S	S	S	-	-	-	-	+	-
34	S	S	S	S	-	-	-	-	+	-

(A) Resistance to *P. infestans* isolates 90128, USA618, IPO-C, and VK98014. Six days post inoculation (dpi), 14 progeny genotypes showed extensively sporulating lesions exceeding 15 mm (susceptible, S) whereas the remaining 19 genotypes displayed localized HR spots smaller than 5 mm at the inoculation sites (resistant, R). (B) Effector response to *A. tumefaciens* clones expressing pGR106-IpiO1K143N, -IpiO2, -IpiO4¹, -IpiO4², -IpiO4³ (PexRD6-1, -2, -3 from Table 2 respectively) and -Crm2 (positive control) and the pGR106-empty vector (negative control) was determined by monitoring for presence (+) or absence (-) of local necrosis around the inoculation site at 14 dpi. (C) The genetic marker CT88 which is genetically closely linked to *Rpi-bbl1* (0.3 cM) is assessed for presence (+) or absence (-) of the polymorphic band.

¹The inconsistent response of IpiO4 in the parental clone and the F1 progeny plants illustrates the potential problems that are associated with expression of the candidate effectors from a viral genome. Expression levels are apparently amenable to subtle differences in genetic constitution of the plants being tested, underlining the need for confirmation through complementary approaches.

doi:10.1371/journal.pone.0002875.t003

marker co-segregated perfectly with late blight resistance and response to IpiO (Table 3C), suggesting that the two *R* genes might be orthologous. This prompted us to use PCR to amplify full-length copies of *Rpi-bbl1* homologues from genomic DNA of Sto17605-4 and *S. papita* (Pta) 17831-8, another IpiO (PexRD6) responding genotype (data not shown). Initially we used primers designed to amplify only the open reading frames (ORF) of putative *Rpi-bbl1* orthologues. Amplicons of the expected size were cloned into the binary vector pK7WG2 [26] behind a 35S promoter. For each genotype, cloning and restriction enzyme fingerprinting of 96 amplicons resulted in the identification of four classes of *Rpi-bbl1* homologues. From each class, one clone was transferred to *A. tumefaciens*, and co-expressed with *IpiO2* in *N. benthamiana*. One homologue from both species responded to IpiO2, suggesting that *Rpi-bbl1*, and the putative homologues *Rpi-sto1*, and a protein in Pta17831-8 (named *Rpi-ptal1*) recognize the same *P. infestans* effector (data not shown).

Sequence analyses showed that the putatively functional homologues *Rpi-sto1* and *Rpi-ptal1* are nearly identical to *Rpi-bbl1*, with only 3 and 5 non-synonymous nucleotide substitutions, respectively (Figure S3). To exclude the possibility that the putative recognition was due to over-expression of the *R* genes by the 35S promoter, DNA fragments of 6.7 kb were PCR amplified from genomic DNA of Sto17605-4 and Pta17831-8 using PSRF1 and PSRR1 primers that were designed to amplify the functional *Rpi-bbl1* homologues including their natural transcriptional regulatory elements. Cloning of the larger amplicons into the binary vector pBINPLUS and subsequent sequence analysis, revealed that only one gene sequence per genotype had been amplified, corresponding to the putatively functional orthologues identified previously. Co-expression with *IpiO2* in *N. benthamiana* showed the same response to IpiO2 as observed with the 35S constructs, indicating that *Rpi-bbl1*, *Rpi-sto1*, and *Rpi-ptal1* are functionally equivalent (Figure 2A, B, C).

The high conservation of the three genes is remarkable considering that *S. stoloniferum* and *S. papita* are phylogenetically distant from *S. bulbocastanum*. This confirms that *Rpi-bbl1* is of ancient origin [3] and suggests an essential function of the *Rpi-bbl1* gene and its orthologues throughout *Solanum* evolution. Alternatively, interspecific gene transfer through hybridization may have occurred in Mexico, the natural area of origin for all three species [17].

To test whether *Rpi-sto1* and *Rpi-ptal1* confer resistance to *P. infestans*, we infiltrated entire leaves of *N. benthamiana* with *A. tumefaciens* strains carrying *Rpi-sto1*, *Rpi-ptal1*, *Rpi-bbl1* and a non-functional *R* gene as a control, and then challenge-inoculated the leaves with the aggressive *P. infestans* isolate 90128. A distinct hypersensitive response, similar to the response obtained with *Rpi-bbl1*, appeared at the inoculation sites in *Rpi-sto1* and *Rpi-ptal1* treated leaves. In contrast, control leaves showed water-soaking symptoms followed by extensive *P. infestans* sporulation. To confirm these transient assay results, we generated stable transformants of potato cultivar Desiree using the pBINPLUS-*Rpi-sto1* gene construct, which contains *Rpi-sto1* in its natural transcriptional context. Inoculation with *P. infestans* isolate 90128 on *in vitro* transplants of primary transformants showed that *Rpi-sto1* transformant plantlets remained resistant, whereas Desiree control plantlets started sporulating after 7 days, and turned completely diseased at 14–20 days (Figure 3). The results with the *in vitro* assay were confirmed, and subsequently further expanded using mature greenhouse-grown plants [27]. A total of 40 independent primary transformants were selected and detached leaves were inoculated with *P. infestans* isolate 90128; leaves from 34 plants remained resistant, whereas those from wildtype Desiree control plants were fully susceptible. Although we did not generate

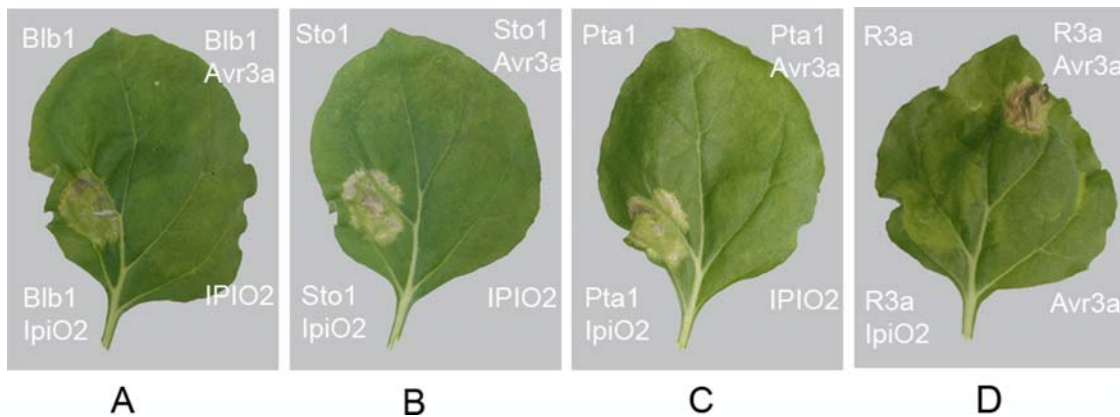


Figure 2. Rpi-blb1, Rpi-sto1, and Rpi-pta1 functionally interact with the avirulence protein IpiO. The R-AVR interaction was reconstructed in a transient expression system in *N. benthamiana* [20,21] by coinfiltrating equal mixtures of *A. tumefaciens* strains carrying pCB302-empty, -IpiO2, and -Avr3a with *A. tumefaciens* strains carrying (A) pBINPLUS-blb1, (B) -sto1, (C) -pta1 and (D) -R3a. A specific HR illustrates the identified R-AVR interactions between Rpi-blb1, Rpi-sto1, Rpi-pta1 and IPO2 and the positive control R3a-Avr3a. Pictures were taken at 8 dpi. doi:10.1371/journal.pone.0002875.g002

stable transformants with *Rpi-pta1*, similar results are expected with *Rpi-pta1*. In summary, the complementation experiments confirm that *Rpi-sto1* is a functional late blight *R* gene.

Discussion

Our findings suggest that *Rpi-sto1*, *Rpi-pta1*, and *Rpi-blb1* recognize the same RXLR effectors IpiO1 and IpiO2 and that this triggers resistance to *P. infestans*. With the identity of Avr-blb1 revealed as IpiO, it now becomes possible to monitor current and future field populations of *P. infestans* with advanced high throughput DNA fingerprinting techniques to detect the evolution of virulence to *Rpi-blb1*. Preliminary surveys indicate that *IpiO1* and *IpiO2* occur in the majority of European and North-American *P. infestans* isolates analyzed to date (data not shown) confirming the potentially broad nature of the resistance conferred by *Rpi-blb1* and its orthologs, and arguing in favor of the deployment and usefulness of this *R* gene.

Stacking or polyculture of potato cultivars with functionally divergent *R* genes effective against the majority of current *P. infestans* isolates are promising strategies for management of late blight [28,29]. Narrow-spectrum *R* genes can be classified on the

basis of their differential response to pathogen races. However, the finding that three different *Solanum* species carry functionally equivalent potentially broad-spectrum *R* genes highlights the importance of profiling *R* genes for their recognition specificities and indicates that identifying *R* genes from unrelated *Solanum* species does not exclude redundancy. Effector profiling is essential for categorizing these potentially broad-spectrum *R* genes that are key to modern late blight resistance breeding, and enables judicious combinations of functionally complementary *R* genes. Resources will otherwise be wasted on the cloning and stacking of functionally similar *R* genes.

Our study demonstrates that *Phytophthora* effector genomics (effector-omics) greatly accelerates the identification of *Avr* genes and the cloning of the corresponding late blight *R* genes, the latter by simplifying the process of positional cloning and enabling rapid functional assays of candidate *R* genes. Compared to traditional inoculations with *P. infestans* isolates, the effectors also enabled the dissection of the activities of otherwise indistinguishable *R* genes into discrete recognition specificities, and moreover helped determine that *Rpi-blb1* has two closely related orthologs in *S. stoloniferum* and *S. papita*. Of particular interest for plant breeding is that these two species are sexually more compatible with potato,

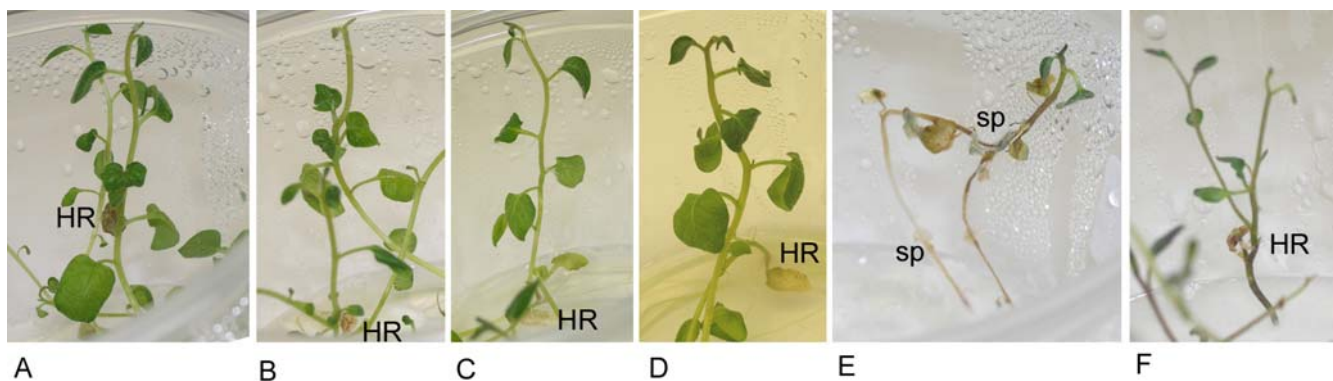


Figure 3. Complementation of Rpi-sto1 in potato. In vitro inoculation [27] of the primary transformants of *Rpi-sto1* in potato cv. Desirée A09-39 (A), A09-49 (B), A09-51 (C), A09-73 (D), untransformed Desirée (E), and *S. demissum* CGN20571-18 (F) with *P. infestans* isolate 90128 results in healthy (A,B,C,D,F) or diseased plantlets (E) within 20 days. Hypersensitive reactions (HR) occurred in inoculated leaflets of *Rpi-sto1* transformants and the resistant *S. demissum* control, thereby localizing *P. infestans* within HR leaflets, resulting in healthy resistant plantlets. In the untransformed Desirée control, sporulation (sp) and spreading of *P. infestans* throughout the plantlet occurs, followed by a total collapse of the plantlet. doi:10.1371/journal.pone.0002875.g003

and thus, in addition to the transgenics or cisgenics approaches, our findings enable traditional breeding strategies to introgress the *Rpi-blb1* specificity into potato.

Materials and Methods

Solanum and *Phytophthora* experiments

Solanum plant material is listed in Table 1. Plants were clonally maintained *in vitro*, and cultured in greenhouses or climate chambers for *P. infestans* or *A. tumefaciens* assays, respectively [13]. *Phytophthora infestans* isolates used in this study are listed in Table S1, and disease testing was performed on detached leaves or *in vitro* plantlets [27,30].

PexRD effectors

Candidate RXLR genes were mined mainly from a large collection of 80,000 ESTs covering several *P. infestans* developmental and infection stages [31]. A collection of 54 nonredundant RXLR effectors was identified and primer pairs based on the mature region of candidate RXLR effectors were designed and used to amplify total DNA from a panel of 9 *P. infestans* isolates (Table S2). The amplicons were cloned into the pGR106 [32] for intracellular targeting in the plant. Detailed sequences of individual clones are available in Table S2.

In planta expression of PexRD effectors

PVX agroinfection with the 54 PexRD effectors was performed using the binary PVX vector pGR106 [32] in *A. tumefaciens* strain GV3101 [33] as previously described [13]. Agroinfiltration was performed on *N. benthamiana* leaves of 4–5 week old plants. *Agrobacterium tumefaciens* strains GV3101 [33], COR308 [34] and AGL1 [35] containing the standard helper plasmids and, in addition, pGR106-empty, IpiO1-K143N, -IpiO2, -IpiO4, pCB302 [36]-empty, -IpiO1, -IpiO2, -IpiO4, pK7-empty, -IpiO1, -IpiO2, -IpiO4 [26] or pBINPLUS-*Rpi-blb1*, -*sto1*, -*pta1* or -R3a were cultured, and co-infiltrations were performed as described previously [21].

Genetic mapping

The chromosome VIII specific PCR marker CT88, previously shown to be genetically linked to *Rpi-blb1* [3] was tested on genomic DNA of the Sto17605-4×RH population. Following digestion with *HinfI*, the PCR products were separated on a 1.5% agarose gel and stained with ethidiumbromide. All amplification reactions were performed in a Biometra® T-Gradient or Biometra® Uno-II thermocycler (Westburg, Leusden, the Netherlands).

Cloning of *Rpi-sto1* and *Rpi-pta1*

Primers GWB1b1F (5'-CACCATGTTGTAATTATTGGC-GAAC) and ARO518 (5'-GTTGTTATAAGGGTATAAGT-GAGC) were designed to amplify the coding region of *Rpi-blb1*. Primers PSRF1 (5'-TTGTTTCCTGCAGGCTTGCTAATT-GAGTGTCTGTT) and PSRR1 (5'-TAATTGGCGCGCCTA-GAGAATGACAGAGAATCGAA) were designed to amplify 6.7 kb genomic fragments of *Rpi-sto1* or *Rpi-pta1*, including native transcriptional regulatory elements. Long range PCRs were performed on genomic DNA isolated from Sto17605-4 and Pta17831-8 using Pfu Turbo™ polymerase (Stratagene). Amplicons obtained with the former primer set were cloned into the pENTR directional TOPO® vector according to the manufacturer's instructions (Invitrogen) and subsequently into the binary Gateway® 35S overexpression vector pK7WG2 [26]. The larger amplicons obtained with the latter primer set were digested with *SbfI* and *AseI* and subsequently cloned into the binary plasmid pBINPLUS [37] also digested with *SbfI* and *AseI*. Based on

restriction analysis with several four base cutters, the pENTR dTOPO clones derived from each species could be classified into 4 classes whereas the pBINPLUS clones displayed a single digestion pattern. Several clones from each class were sequenced using a primer walk strategy. Subsequently, all the clones with a unique sequence were transferred to the *A. tumefaciens* strain COR308 [34] and targeted for functional analysis.

Transient and stable complementation

For transient complementation assays on *N. benthamiana*, *A. tumefaciens* strains containing the appropriate plasmids were cultured as described above. Subsequently all fully expanded leaves of 4–5 week old plants were completely infiltrated with MMA culture at an OD of 0.1. Two days post infiltration with *A. tumefaciens*, detached leaves were inoculated with *P. infestans* isolate 90128 and infection phenotypes were assessed from 4 to 7 days post inoculation [30]. Inoculation sites displaying a clear hypersensitive response were regarded as incompatible reactions (resistance) whereas those displaying a characteristic water soaking phenotype in combination with significant sporulation of *P. infestans* were scored as compatible reactions (susceptible).

Stable transformation of cv. Desiree with the binary construct pBINPLUS-*Rpi-sto1* was carried out as described previously [38,39]. A total of 40 independent primary transformants were selected and cultured in the greenhouse and subsequently tested for resistance to *P. infestans* isolate 90128 using the detached leaf assay [30].

Data deposition

The sequences of *Rpi-sto1* and *Rpi-pta1* are available in the Genbank nucleotide sequence database, accession EU884421 and EU884422, respectively.

Supporting Information

Figure S1 Quantification of PVX replication upon agroinfection with pGR106-Avr3a in a broad variation of *Solanum* genotypes. R3a-containing plants include two *S. demissum* genotypes 17810-01 and -06 from the R3a donor accession CGN17810, the Mastenbroek R3a differential [1,2], three R3a recombinants SW8537-033, SW8539-004, SW8540-025 [3], and the R3a transformant T68.3-005 in the susceptible *S. tuberosum* 1029-31 [4], and R3a-transformants T68.4-002 and T68.4-006 in potato cultivar Desiree [4]. R3a-lacking genotypes include the susceptible *S. tuberosum* cv. Bintje, Desiree, and RH89-039-16. Two-week old potato plantlets were toothpick-inoculated with *A. tumefaciens* strains containing the empty pGR106, pGR106-Avr3a, or pGR106-Crn2, and a control group was left uninoculated. At 18 dpi young leaves were collected and PVX titers were quantified by ELISA. The results shown are from one experiment. The experiments were repeated several times with the same and with other effectors and plant material and the results were comparable.

Found at: doi:10.1371/journal.pone.0002875.s001 (0.11 MB PDF)

Figure S2 Co-expression of *Rpi-blb1* with *ipiO1*, *IpiO2* and *IpiO4*. The complete amino acid sequence of *Rpi-blb1* is shown and amino acid residues from *Rpi-sto1* or -*pta1* that differ from the corresponding residue in *Rpi-blb1* are underlined with a dotted line. Conserved motifs in the NBS domain are indicated in lowercase. The regions of the LRRs that correspond to the β -strand/ β -turn motif xxLxLxxxx are underlined. An asterisk indicates codons that harbour synonymous nucleotide substitutions.

Found at: doi:10.1371/journal.pone.0002875.s002 (0.32 MB PDF)

Figure S3 Amino acid sequence alignment of Rpi-blb1, Rpi-sto1 and Rpi-ptal

Found at: doi:10.1371/journal.pone.0002875.s003 (0.06 MB PDF)

Table S1 *Phytophthora infestans* isolates used in this study. The virulence spectrum of the *P. infestans* isolates on Sto17605-4 (Sto), RH89-039-16 (RH), and the R gene differential set R1-R11 [1,2], the geographic origin, collection year, and provider of the isolates, and the experiment described in this study are presented.

Found at: doi:10.1371/journal.pone.0002875.s004 (0.01 MB PDF)

Table S2 RXLR effector candidates used in this study. PexRD, PexRD family members (nr), *Agrobacterium tumefaciens* clones, known genes, the *Phytophthora infestans* strain and amino acid sequences are presented. PexRD and *A. tumefaciens* clones correspond to Table 2.

References

- Müller KO, Black W (1952) Potato breeding for resistance to blight and virus diseases during the last hundred years. *Zeitschrift für Pflanzenzüchtung* 31: 305–318.
- Jacobsen E, Schouten HJ (2007) Cisgenesis strongly improves introgression breeding and induced translocation breeding of plants. *Trends in Biotechnology* 25: 219–223.
- van der Vossen E, Sikkema A, Hekkert BL, Gros J, Stevens P, et al. (2003) An ancient R gene from the wild potato species *Solanum bulbocastanum* confers broad-spectrum resistance to *Phytophthora infestans* in cultivated potato and tomato. *Plant Journal* 36: 867–882.
- Song J, Bradeen JM, Naess SK, Raasch JA, Wielgus SM, et al. (2003) Gene RB cloned from *Solanum bulbocastanum* confers broad spectrum resistance to potato late blight. *Proc Natl Acad Sci U S A* 100: 9128–9133.
- van der Vossen EAG, Gros J, Sikkema A, Muskens M, Wouters D, et al. (2005) The *Rpi-blb2* gene from *Solanum bulbocastanum* is an *Mi-1* gene homolog conferring broad-spectrum late blight resistance in potato. *Plant Journal* 44: 208–222.
- Application GM field trial (2005) Potato with improved resistance to *Phytophthora infestans*. BASF Plant Science GmbH.
- Schouten HJ, Krens FA, Jacobsen E (2006) Do cisgenic plants warrant less stringent oversight? *Nature biotechnology* 24: 753.
- Kamoun S (2007) Groovy times: filamentous pathogen effectors revealed. *Current Opinion in Plant Biology* 10: 358–365.
- Jones JDG, Dangl (2006) The plant immune system. *Nature* 444: 323–329.
- Birch PRJ, Rehmany AP, Pritchard L, Kamoun S, Beynon JL (2006) Trafficking arms: oomycete effectors enter host plant cells. *Trends in Microbiology* 14: 8–11.
- Kamoun S (2006) A catalogue of the effector secretome of plant pathogenic oomycetes. *Annu Rev Phytopathol* 44: 1–20.
- Whisson SC, Boevink PC, Moleki L, Avrova AO, Morales JG, et al. (2007) A translocation signal for delivery of oomycete effector proteins into host plant cells. *Nature* 450: 115–118.
- Vleeshouwers VGAA, Driesprong JD, Kamphuis LG, Torto-Alalibo T, van 't Slot KAE, et al. (2006) Agroinfection-based high throughput screening reveals specific recognition of INF elicitors in *Solanum*. *Molecular Plant Pathology* 7: 499–510.
- Bendahmane A, Querci M, Kanyuka K, Baulcombe DC (2000) *Agrobacterium* transient expression system as a tool for the isolation of disease resistance genes: application to the *Rx2* locus in potato. *Plant Journal* 21: 73–81.
- Riely BK, Martin GB (2001) Ancient origin of pathogen recognition specificity conferred by the tomato disease resistance gene Pto. *Proc Natl Acad Sci U S A* 98: 2059–2064.
- Hawkes J (1990) The potato: evolution, biodiversity, and genetic resources. London: Belhaven Press.
- Spooner DM, Van Den Berg RG, Rodriguez A, Bamberg J, Hijmans RJ, et al. (2004) Systemic Botany Monographs. Wild potatoes (*Solanum* section *Petota*; Solanaceae) of North and Central America; Anderson C, ed. Ann Arbor: Michigan: The American Society of Plant Taxonomists. 209 p.
- Spooner DM, Castillo TR (1997) Reexamination of series relationships of South American wild potatoes (Solanaceae: Solanum sect. *Petota*): evidence from chloroplast DNA restriction site variation. *American Journal of Botany* 84: 671–685.
- Bhattacharjee S, Hiller NL, Liolios K, Win J, Kanneganti T-D, et al. (2006) The Malarial Host-Targeting Signal Is Conserved in the Irish Potato Famine Pathogen. *PLoS Pathogens* 2: e50.
- Armstrong MR, Whisson SC, Pritchard L, Bos JIB, Venter E, et al. (2005) An ancestral oomycete locus contains late blight avirulence gene *Avr3a*, encoding a protein that is recognized in the host cytoplasm. *Proc Natl Acad Sci U S A* 102: 7766–7771.
- Bos JIB, Kanneganti T-D, Young C, Cakir C, Huitema E, et al. (2006) The C-terminal half of *Phytophthora infestans* RXLR effector AVR3a is sufficient to trigger R3a-mediated hypersensitivity and suppress INF1-induced cell death in *Nicotiana benthamiana*. *Plant Journal* 48: 165–176.
- McKee RK (1962) Identification of R-genes in *Solanum stoloniferum*. *Euphytica* 11: 42–46.
- van West P, de Jong AJd, Judelson HS, Emons AMC, Govers F (1998) The *ipiO* gene of *Phytophthora infestans* is highly expressed in invading hyphae during infection. *Fungal Genetics and Biology* 23: 126–138.
- Pieterse CMJ, Van West P, Verbakel HM, Brasse PWHM, Van Den Berg Velthuis GCM, et al. (1994) Structure and genomic organization of the *ipiB* and *ipiO* gene clusters of *Phytophthora infestans*. *Gene* 138: 67–77.
- Wang M, Allefs S, van den Berg RG, Vleeshouwers VGAA, van der Vossen EAG, et al. (2008) Allele mining in *Solanum*: conserved homologues of Rpi-blb1 are identified in *Solanum stoloniferum*. Theoretical and applied genetics; DOI 10.1007/s00122-008-0725-3.
- Karimi M, Inze D, Depicker A (2002) Gateway vectors for *Agrobacterium*-mediated plant transformation. *Trends in Plant Science* 7: 193–195.
- Huang S, Vleeshouwers VGAA, Visser RGF, Jacobsen E (2005) An accurate in vitro assay for high-throughput disease testing to *Phytophthora infestans* in potato. *Plant Disease* 89: 1263–1267.
- Jones JD (2001) Putting knowledge of plant disease resistance genes to work. *Curr Opin Plant Biol* 4: 281–287.
- Jacobsen E, Hutten R (2006) Stacking resistance genes in potato by cisgenesis instead of introgression breeding. In: Haase NU, Haverkort AJ, eds. Potato developments in a changing Europe: Wageningen Academic Publishers. pp 46–57.
- Vleeshouwers VGAA, van Doonijewert W, Keizer LCP, Sijpkens L, Govers F, et al. (1999) A laboratory assay for *Phytophthora infestans* resistance in various *Solanum* species reflects the field situation. *European Journal of Plant Pathology* 105: 241–250.
- Randall TA, Dwyer RA, Huitema E, Beyer K, Cvitanich C, et al. (2005) Large-scale gene discovery in the oomycete *Phytophthora infestans* reveals likely components of phytopathogenicity shared with true fungi. *Molecular plant microbe interactions* 18: 229–243.
- Lu R, Martin Hernandez AM, Peart JR, Malcuit I, Baulcombe DC (2003) Virus-induced gene silencing in plants. *Methods* 30: 296–303.
- Holsters M, Silva B, Van Vliet F, Genetello C, De Block M, et al. (1980) The functional organization of the nopaline *A. tumefaciens* plasmid pTiC58. *Plasmid* 3: 212–230.
- Hamilton CM, Frary A, Lewis C, Tanksley SD (1996) Stable transfer of intact high molecular weight DNA into plant chromosomes. *Proceedings of National Academy of Science USA* 93: 9975–9979.
- Whitham S, Dinesh-Kumar SP, Choi D, Hehl R, Corr C, et al. (1994) The product of the tobacco mosaic virus resistance gene N: similarity to toll and the interleukin-1 receptor. *Cell* 78: 1101–1115.
- Xiang C, Han P, Lutziger I, Wang K, Oliver DJ (1999) A mini binary vector series for plant transformation. *Plant Mol Biol* 40: 711–717.
- van Engelen FA, Molthoff JW, Conner AJ, Nap J-P, Pereira A, et al. (1995) pBINPLUS: an improved plant transformation vector based on pBIN19. *Transgenic Research* 4: 288–290.

38. Filati J, Kiser J, Rose R, Comai L (1987) Efficient transfer of a glyphosphate tolerance gene into tomato using a binary *Agrobacterium tumefaciens* vector. *Biotechnology* 5: 726–730.
39. Hoekema A, Huisman MJ, Molendijk L, van den Elzen PJM, Cornelissen BJC (1989) The genetic engineering of two commercial potato cultivars for resistance to potato virus X. *Biotechnology* 7: 273–278.
40. Torto TA, Li SA, Styer A, Huitema E, Testa A, et al. (2003) EST mining and functional expression assays identify extracellular effector proteins from the plant pathogen *Phytophthora*. *Genome Research* 13: 1675–1685.
41. Huang S, van der Vossen EAG, Kuang H, Vleeshouwers VGAA, Zhang N, et al. (2005) Comparative genomics enabled the isolation of the *R3a* late blight resistance gene in potato. *The Plant Journal* 42: 251–261.
42. Jones L, Hamilton AJ, Voinnet O, Thomas CL, Maule AJ, et al. (1999) RNA-DNA interactions and DNA methylation in post-transcriptional gene silencing. *Plant Cell* 11: 2291–2301.