

RESEARCH PAPER

Localization of *myo*-inositol-1-phosphate synthase to the endosperm in developing seeds of *Arabidopsis*

Naoto Mitsuhashi^{1,2,*}, Maki Kondo³, Satoru Nakaune⁴, Miwa Ohnishi^{1,5}, Makoto Hayashi³, Ikuko Hara-Nishimura⁴, Alan Richardson⁶, Hidehiro Fukaki¹, Mikio Nishimura³ and Tetsuro Mimura^{1,5,†}

¹ Department of Biology, Graduate School of Science, Kobe University, Rokkodai 1-1, Nada-ku, Kobe, 657-8501 Japan

² Japan Society for the Promotion of Science (JSPS), Chiyoda-ku, Tokyo, 102-8471 Japan

³ Department of Cell Biology, National Institute for Basic Biology, Okazaki, 444-8585 Japan

⁴ Graduate School of Science, Kyoto University, Sakyo-ku, Kyoto, 606-8502 Japan

⁵ Core Research for Evolutional Science and Technology (CREST), Japan Science and Technology Agency (JST), Chuo-ku, Tokyo, 113-0027 Japan

⁶ CSIRO Plant Industry, PO Box 1600, Canberra, ACT, 2601, Australia

Received 15 February 2008; Revised 7 May 2008; Accepted 12 May 2008

Abstract

Expression and localization of *myo*-inositol-1-phosphate synthase (MIPS) in developing seeds of *Arabidopsis thaliana* was investigated. MIPS is an essential enzyme for production of inositol and inositol phosphates via its circularization of glucose-6-phosphate as the initial step. *myo*-inositol-6-phosphate (InsP₆ or phytic acid) is the predominant form of phosphorus found in seeds and accumulates as a consequence of MIPS action. Three MIPS genes have been identified in *Arabidopsis*, all of which were expressed not only in siliques but in both leaves and roots. Immunoelectron microscopy using a MIPS antibody showed that MIPS localizes to the cytosol primarily in the endosperm during seed development and not in the embryo. This is consistent with results obtained using fluorescent microscopy and western blot analysis that showed a similar pattern of localization. However, InsP₆, which is the final product of inositol phosphate metabolism, was present mainly in the embryo. This suggests that a complex interaction between the endosperm and embryo occurs during the synthesis and subsequent accumulation of InsP₆ in developing seeds of *Arabidopsis*.

Key words: Inositol, inositol phosphates, inositol-6-phosphates, *myo*-inositol-1-phosphate synthase, phosphate, phytate, vacuole.

Introduction

myo-Inositol hexakisphosphate (InsP₆; phytic acid) is the most abundant form of phosphorus found in plant seeds. InsP₆ in seed is bound to minerals (K, Ca, Mg, Zn, and Mn) to form inclusion particles (globoids) which are commonly located in protein storage vacuoles (Lott *et al.*, 1979). In germinating seeds, InsP₆ is hydrolysed into *myo*-inositol and inorganic phosphates (Pi) by phytase (*myo*-inositol hexakisphosphate phosphatase) and used for subsequent seedling growth (Loewus and Murthy, 2000; Raboy, 2003). In yeast, InsP₆ is also suggested to be involved in mRNA export from the nucleus (Miller *et al.*, 2004) and chromatin remodelling (Shen *et al.*, 2003). More recently, InsP₆ has been found to act as a co-factor for auxin binding to the TIR1 plant hormone auxin receptor (Tan *et al.*, 2007). Thus, InsP₆ is attracting increased attention not only as a seed storage component but also as a regulator of cellular functions.

From a nutritional perspective, high InsP₆ in grain is considered to be undesirable due to its binding of essential

* Present address: Protenova Co. Ltd, Hayashi-machi 2217-44, Takamatsu, Kagawa, 761-0301 Japan

† To whom correspondence should be addressed. E-mail: mimura@kobe-u.ac.jp

Abbreviations: Glc-6-P, glucose-6-phosphate; InsP₆, *myo*-inositol hexakisphosphate; MIPS, *myo*-inositol-1-phosphate synthase; Pi, inorganic phosphate.

micronutrient metals. Considerable effort has therefore been undertaken to isolate low InsP₆ mutants from various plant species, including barley (Hatzack *et al.*, 2000; Dorsch *et al.*, 2003), maize (Raboy *et al.*, 2000), rice (Larson *et al.*, 2000; Kuwano *et al.*, 2006), and soybean (Wilcox *et al.*, 2000). One such mutant in soybean showed 50% reduction of InsP₆ and an ~10-fold increase in the Pi content of seeds, which was associated with lower expression of a *MIPS* [Ins(3)P₁ synthase] gene (Hitz *et al.*, 2002). Similarly, RNA interference (RNAi)-mediated silencing of *MIPS* gene expression in transgenic soybean resulted in a 95% reduction of InsP₆ in seeds (Nunes *et al.*, 2006). However, the transgenic lines showed impaired seed development, and antisense lines of *MIPS* genes in potato plants similarly have altered plant morphology (Keller *et al.*, 1998). These may be caused by important roles in the cellular functions of InsP₆.

MIPS mediates the conversion of Glc-6-P to Ins(3)P₁, and its activity is essential for the subsequent synthesis of InsP₆. *myo*-inositol can also be derived from Ins(3)P₁ via dephosphorylation by *myo*-inositol-1-phosphate phosphatase (Loewus and Murthy, 2000). Inositol is known to play important roles in plant development. Various derivatives of *myo*-inositol (e.g. *muco*-inositol, pinitol) also function in environmental stress tolerance. *MIPS* is therefore an important enzyme for inositol and inositol phosphate metabolism in plants.

InsP₆ synthesis requires either the sequential phosphorylation of Ins(3)P₁ or the phosphorylation of phosphatidyl inositol intermediates via *myo*-inositol. A low phytic acid mutant in maize (*lpa3*) has a mutation in the gene encoding a *myo*-inositol kinase (MIK) that is normally expressed in developing embryos (Shi *et al.*, 2005). Another maize low phytic acid mutant (*lpa2*) has altered expression of an Ins(1,3,4)P₃ 5/6 kinase (PPK) gene (Shi *et al.*, 2003), both of which caused a significant reduction in the InsP₆ content in seeds with a concomitant increase in Pi. Ins(1,4,5)P₃ kinase (*AtIPK2*) and Ins 2-kinase (*AtIPK1*) have similarly both been shown to be responsible for InsP₆ synthesis in *Arabidopsis* (Stevenson-Paulik *et al.*, 2005). These results indicate that InsP₆ synthesis is complex, involving at least two alternative pathways. As part of this complexity, it is likely that enzyme reactions, such as *MIPS* action and sequential phosphorylation, are separated in different cells or tissues. In addition, it has been shown that addition of an excess of Pi to *Catharanthus roseus* suspension-cultured cells induced a large accumulation of InsP₆ in the vacuole (Mitsuhashi *et al.*, 2005). Although excess Pi increased InsP₆ synthesis, the *MIPS* and Ins(1,4,5)P₃ kinase immunocentents did not change, suggesting complex regulation of InsP₆ synthesis, by not only enzymes but also substrate levels.

In the present study, the focus was on the role of *MIPS* in InsP₆ synthesis in developing seeds of *Arabidopsis*.

Yoshida *et al.* (1999) have shown that expression of a rice *MIPS* gene (*RINO1*) was detected between 4 d and 7 d after anthesis in the scutellum and aleurone layer, coinciding with the appearance of InsP₆. Treatment of rice cultured cells with abscisic acid (ABA) and sucrose together also resulted in higher levels of *MIPS* transcript accumulation, suggesting a synergistic induction of the *MIPS* gene in developing rice seeds (Yoshida *et al.*, 2002). However, the subcellular localization of *MIPS* was not reported. More recently, Chiera and Grabau (2007) have shown in soybean seed that *MIPS* (Gm *MIPS1*) is localized in non-embryo tissues and appeared to be associated subcellularly with plastid-like structures that stained with *MIPS* antibody. *MIPS* activity has been reported to be widely distributed in intracellular compartments including membrane-bound organelles and cell walls, as well as cytoplasm (Lackey *et al.*, 2003). Despite this, the site(s) of InsP₆ synthesis in seed cells is poorly understood. Most InsP₆ is accumulated in the vacuole, which becomes globoid in seeds, but it is not known how InsP₆ is transported to the vacuole. Using electron microscopy, Otegui *et al.* (2002) observed that in developing seeds of *Arabidopsis*, globoids with Mg²⁺, K⁺, and Ca²⁺ were present within the embryo and that the endosperm of chalazal cells transiently contain Mn- and/or Zn-phytate. More recently, Shi *et al.* (2007) reported that the maize *lpa1* gene encodes an MRP-type ABC transporter and, since it is known that the maize *LPA1* mutant has less InsP₆, this ABC transporter may be associated with InsP₆ storage.

To clarify InsP₆ synthesis during *Arabidopsis* seed maturation, *MIPS* localization was examined using immunohistology, and it is shown here that *MIPS* proteins localize to the cytosol of the *Arabidopsis* seed endosperm. Moreover, the presence of InsP₆ within both embryo and endosperm tissues suggests an interaction between the tissues in the synthesis and subsequent storage of InsP₆ in developing seeds of *Arabidopsis*.

Materials and methods

Plant materials

Seeds of *Arabidopsis thaliana* (Columbia accession) were surface sterilized with 95% ethanol and then sown onto 0.2% gellan gum (Wako, Tokyo, Japan) in 1/2 MS medium (Wako) with 3 mg l⁻¹ thiamine-HCl, 0.5 mg l⁻¹ pyridoxine, and 5 mg l⁻¹ nicotinic acid. After incubation at 4 °C for 4 d to break dormancy, the seeds were germinated and grown at 23 °C under continuous light. After ~14 d the seedlings were transferred into vermiculite medium for subsequent growth.

Developing seeds were harvested from *Arabidopsis* plants having 10–12 siliques. Seeds harvested from the sixth to eighth siliques were separated into seed coat and embryo using tweezers under a binocular (SZX16, Olympus). The seed coat and embryo were washed with RNase-free water three times to remove fragile endosperm tissues.

RT-PCR and real-time RT-PCR

Total RNA was extracted from tissue using the RNeasy Plant Mini Kit (QIAGEN Inc., Valencia, CA, USA) according to protocols provided by the manufacturer. First-strand cDNA was generated by reverse transcription with reverse transcriptase XL (AMV) (Takara Bio Inc., Shiga, Japan) using oligo(dT) primer, 5'-CTGATCTAGAGGTACCGGATCCTTTTTTTTTTTTTTTTTTTTTT. Real-time PCR amplification was performed using the SYBR[®] Premix Ex Taq[™] (TaKaRa Bio Inc.) and a real-time PCR detector (TaKaRa Smart Cycler II system). PCR was performed using gene-specific oligonucleotide primer pairs based on unique sequences for each MIPS gene and an *Actin-2* (control) gene. The primer sequences used were: for *AtMIPS1* (At2g22240), 5'-GCGGGATCCCATGGAGTACAAGTGAAGGATGAG-3' and 5'-GCGGAATTCGAAAATCCATATTCATAGATCATAAG-3'; *AtMIPS2* (At4g39800), 5'-GCGGAATTCGAAGTGAACATGAAGAAGCATGAAC-3' and 5'-GCGATCGATGGAACCAAACCATGATTATATATCTC-3'; *AtMIPS3* (At5g10170), 5'-GCGATCGATTCTCGAGTACAAGTATCAAGAGAC-3' and 5'-GCGCTCGAGCCAAATATATATTATAGTTTGAAGT-3'; and for *Actin-2* (At3g18780), 5'-TTTGTCCAGCCCTCGTTTGT-3' and 5'-TCATGCTGCTTGGTGAAGT-3'. In both PCR methods, the same primers sets were used for each gene.

Preparation of antibodies against MIPS

MIPS antibody was prepared according to Mitsuhashi *et al.* (2005). An expressed sequence tag (EST) clone (accession no. AV525103) for the *Arabidopsis MIPS-2* gene (At4g39800) was provided by Kazusa DNA Research Institute. Oligonucleotide primers 5'-GAA-TTCATGTTTATTGAGAGCTTCAAAGTT-3' and 5'-CTCGAGC-TTGAACCCATGATCATGTTGTT-3' were designed on the basis of N- and C-terminal sequences of the MIPS-2 gene, respectively. The amplified DNA was digested with *XhoI* and *EcoRI*, and inserted into the *XhoI* and *EcoRI* sites of the pET21a vector (EMD Biosciences, San Diego, CA, USA). The pET21::MIPS2 plasmid was introduced into *Escherichia coli* strain BL21(DE3) (EMD Biosciences). The recombinant protein was purified via a 6×His tag by using a HiTrap Chelating HP Column (Amersham Biosciences, Piscataway, NJ, USA) and used as antigen. Specific antisera raised in rabbit were provided by Shibayagi Co., Ltd (Gunma, Japan).

Preparation of thin sections

Developing *Arabidopsis* seeds with torpedo-shaped embryos were vacuum infiltrated for 1 h with a fixative that consisted of 4% paraformaldehyde, 1% glutaraldehyde, and 0.06 M sucrose in 0.05 M cacodylate buffer, pH 7.4. The tissues were cut into slices of <1 mm in thickness with a razor blade and treated for another 2 h with freshly prepared fixative.

Immunoelectron microscopy

Immunogold labelling procedures were essentially the same as described previously (Hara-Nishimura *et al.*, 1993), except for the use of anti-AtMIPS2 antibodies (Mitsuhashi *et al.*, 2005). Post-fixation was omitted for immunoelectron microscopy. The samples were dehydrated in a graded dimethylformamide series at -20 °C and embedded in London Resin White (London Resin Co., Basingstoke, Hampshire, UK). Blocks were polymerized under a UV lamp and sectioned with a Reichert ultramicrotome (Leica, Heidelberg, Germany). Ultrathin sections were incubated with 1% (w/v) bovine serum albumin (BSA) in phosphate-buffered saline (PBS) for 1 h at room temperature and then incubated with anti-AtMIPS2 antibodies in blocking solution overnight at 4 °C. The sections were washed with PBS and then incubated for 30 min at

room temperature with a solution of protein A-gold (10 nm; GE Healthcare Biosciences, Tokyo, Japan) in the blocking solution. The sections were washed with distilled water and then were stained with uranyl acetate and lead citrate. After staining, all sections were examined with a transmission electron microscope (model 1200EX; JEOL, Tokyo, Japan) at 80 kV.

Immunofluorescence analysis

Developing seeds of *Arabidopsis* were fixed for 40 min in 7.2% (w/v) formaldehyde, 0.1% (v/v) Nonidet P-40, 10% (v/v) dimethylsulphoxide, and 50 mM Na-phosphate buffer, pH 7.2. Seeds were then washed twice with Tris-buffered saline-Tween (TBS-T) for 5 min, incubated in TBS-T containing 5% (w/v) Cellulase Onozuka R-10 (Yakult, Tokyo, Japan) and 2% (w/v) Pectolyase Y-23 (Kikkoman, Tokyo, Japan) for 20 min at 30°C, washed twice with TBS-T, incubated in blocking buffer [2% (w/v) BSA and TBS-T] for 30 min, and then incubated with anti-AtMIPS2 or pre-immune antibodies in the blocking buffer for 40 min. After this the seeds were washed three times for 5 min each, incubated for 1 h with goat anti-rabbit IgG antibodies conjugated with Alexa Fluor 488 (absorbance, 495 nm; emission, 519 nm; Molecular Probes, Eugene, OR), washed three times for 5 min with TBS-T, and mounted.

Immunoblot analysis

Seed tissues of *Arabidopsis* were homogenized in 10 mM Tris-HCl, pH 7.5, before centrifugation to collect soluble proteins. Proteins (5 µg per lane) were subjected to SDS-PAGE and were transferred electrophoretically to a polyvinylidene difluoride membrane according to the manufacturer's protocol (BioCraft, Tokyo, Japan). The membrane was incubated with the antibodies against AtMIPS2. Horseradish peroxidase-conjugated donkey antibodies directed against rabbit IgG (GE Healthcare Biosciences) were used as the secondary antibodies. The antibody-labelled proteins were visualized with an enhanced chemiluminescence kit (ECL system; GE Healthcare Biosciences). Antibodies against *Arabidopsis* 2S albumin and 12S globulin were also used as controls (Shimada *et al.*, 2003).

Measurement of inositol phosphates

Inositol phosphates and Pi were measured using a DX-500 ion chromatography system (Dionex, Osaka, Japan) consisting of a gradient pump, a 25 µl sample loop, and a conductivity detector as described previously (Baluyot and Hartford, 1996; Sekiguchi *et al.*, 2000; Mitsuhashi *et al.*, 2005). Dionex IonPac AS11 (2 mm ID×250 mm) and IonPac AG11 (2 mm ID×50 mm) columns packed with anion-exchange resin were used as the separation columns. The Dionex ASRS-Ultra anion self-regenerating suppressor was operated in the external water mode at 100 mA. The Dionex PeakNet workstation was used for data processing. A Dionex EG40 eluent generator equipped with an EGC-KOH cartridge was used. A Dionex IonPac ATC-1 (4 mm ID×35 mm), a high-capacity anion-exchange column, was placed at the pump outlet to remove the small amount of dissolved carbon dioxide and carbonate in the deionized water. This procedure allowed InsP₁ to InsP₆ to be resolved in a single gradient elution. A 25 µl aliquot of the filtered samples was automatically injected by an autosampler AS-50 (Dionex). The flow-rate was 0.35 ml min⁻¹ at 35 °C. The concentration gradient (5–80 mM KOH) was generated by EG40. The detection limit (S/N = 3) for InsP₆ was 50 nM. Mitsuhashi *et al.* (2005) showed chromatograms of all 64 isomers of InsP_n. They finally separated three of six InsP₁ isomers, three of 15 InsP₂ isomers, eight of 20 InsP₃ isomers, eight of 15 InsP₄ isomers, and three of six InsP₅ isomers independently, although enantiomers were not separated. InsP₆ was purchased from Sigma (St Louis, MO, USA).

Results

Investigation of MIPS gene expression in Arabidopsis

The objective of the present work is to clarify the localization of InsP₆ synthesis during seed maturation in *Arabidopsis*. Conversion of Glc-6-P to Ins(3)P₁ is mediated by MIPS which is an initial key step in InsP₆ synthesis. In the *Arabidopsis* genome, there are three isoforms of the MIPS gene, i.e. *AtMIPS1* (At2g22240), *AtMIPS2* (At4g39800), and *AtMIPS3* (At5g10170). To elucidate whether any one of these genes is responsible for InsP₆ synthesis in developing seeds, the expression pattern of the MIPS isoforms was investigated using RT-PCR. As the nucleotide sequences of the three genes is highly conserved (>79%), specific PCR primers were designed for the C-terminus-encoding and 3'-untranslated region (UTR) sequences, respectively. All three *AtMIPS* genes were expressed in developing siliques, leaves, and roots (Fig. 1a), suggesting that the *AtMIPS1*, *AtMIPS2*, and *AtMIPS3* genes may also all be expressed in developing seeds. Real-time PCR analysis using the same primer sets revealed that the

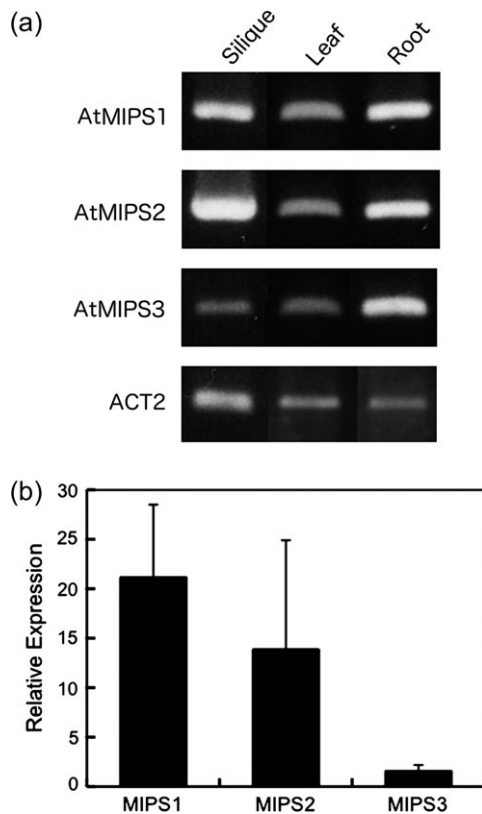


Fig. 1. Expression of MIPS genes in *Arabidopsis*. (a) Organ specificity of MIPS gene expression. Shown is RT-PCR of total RNA extracted from green siliques (Silique), mature leaves (Leaf), and roots (Root) using gene-specific primers for the *Arabidopsis AtMIPS1* (At2g22240), *AtMIPS2* (At4g39800), *AtMIPS3* (At5g10170), and *ACTIN2* (*ACT2*; At3g18780) genes. (b) Relative expression levels of the three MIPS genes relative to the *ACT2* gene in green siliques measured with real-time PCR. Values are expressed with mean ± SE (n = 3).

relative expression of *AtMIPS1* and *AtMIPS2* in developing siliques was higher than that of *AtMIPS3*.

Immunolocalization of MIPS proteins in developing seeds of Arabidopsis

In *Arabidopsis*, it is not clear when InsP₆ accumulation is initiated during seed development. Two different stages (torpedo and mature) of developing seeds were therefore investigated for localization of *AtMIPS* proteins with immunoelectron microscopy using a polyclonal antibody raised against *AtMIPS2*. However, this antibody does not distinguish between the three isoforms of MIPS due to high amino acid sequence homology (>89%) across the proteins. Indeed, MIPS proteins of another species (*Catharanthus roseus*) were also detected with this antibody (Mitsuhashi *et al.*, 2005). The immunolocalization data obtained therefore are likely to represent the additive signals of the three *AtMIPS* proteins which were all expressed in developing siliques. The density of immunogold particles showed a similar frequency between cells in torpedo and mature stages (Fig. 2). The subcellular

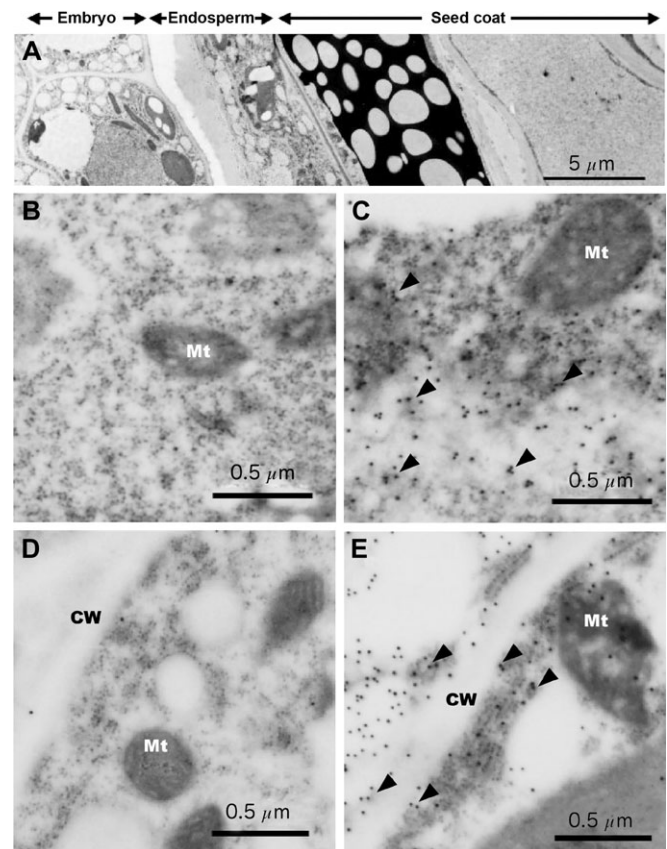


Fig. 2. Immunoelectron microscopy of MIPS protein in *Arabidopsis* seeds. (A) Transverse section of whole mature seeds. (B–D) Thin sections of torpedo-stage seeds (B and C) and mature-stage seeds (D and E). B and D show embryo tissue, and C and E show endosperm. CW, cell wall; Mt, mitochondria. Arrowheads show gold particles raised by anti-*AtMIPS2* antibody.

localization indicated the presence of immunogold particles mainly in the cytosol of the endosperm (Fig. 2C, E; arrowheads), with negligible presence in other organelles, cell walls, and membrane structures. Both torpedo and mature stage embryonic cells showed only low background levels of gold particles (Fig. 2), indicating that AtMIPS proteins appear to be specifically located within the endosperm cytosol.

Localization of AtMIPS proteins was also investigated using immunofluorescent photomicroscopy. Mature stage seed sections were exposed to anti-AtMIPS2 serum or pre-immune control serum, and then to a secondary antibody with a fluorescent conjugate (Alexa Fluor 488). Consistent with the immunolocalization results, the fluorescent signal of the anti-AtMIPS antibody was also detected in the endosperm only and not in the embryo (Fig. 3). Control serum showed no positive signals in any cells.

In addition to immunohistochemical analysis, the tissue-specific location of MIPS was also investigated by western blot analysis. Developing seeds were collected from *Arabidopsis* plants with between 10 and 12 siliques. Individual seeds were then dissected to separate the seed contents, containing the embryo and its surrounding endosperm, from the seed coat. In some cases, the endosperm was also removed from the embryo by washing with Tris buffer, and protein distributions were then assayed using MIPS, 2S albumin, and 12S globulin antibodies. AtMIPS protein (60 kDa band) showed low abundance in the seed coat and was detected primarily in

non-washed tissues only, with a marked reduction when the endosperm was removed (Fig. 4). In contrast, the 2S albumin and 12S globulin seed storage proteins showed high abundance in both unwashed and washed tissues, suggesting either an embryo-specific location or a presence in both embryo and endosperm tissues.

Localization of $InsP_6$ in Arabidopsis seeds

The presence of $InsP_6$ was similarly measured in embryo and embryo+endosperm tissues using ion chromatography. $InsP_6$ was clearly detected in the embryo and was not reduced by removal of the endosperm by washing (Fig. 5 and Supplementary Fig. S1 available at *JXB* online). This suggests that $InsP_6$ accumulates primarily within the embryo despite the AtMIPS proteins being predominantly localized to the endosperm, as determined by the immunohistochemical analyses. Therefore, it is evident that the site of initial synthesis of inositol phosphates in *Arabidopsis* seeds (through the action of MIPS genes) may differ from the site of eventual accumulation of $InsP_6$ and that there is interaction between the endosperm and embryo in the transport of $InsP_6$ (or lower order derivatives) across the different tissues.

Discussion

Arabidopsis contains three isoforms of the MIPS gene which were ubiquitously expressed in the various organs examined

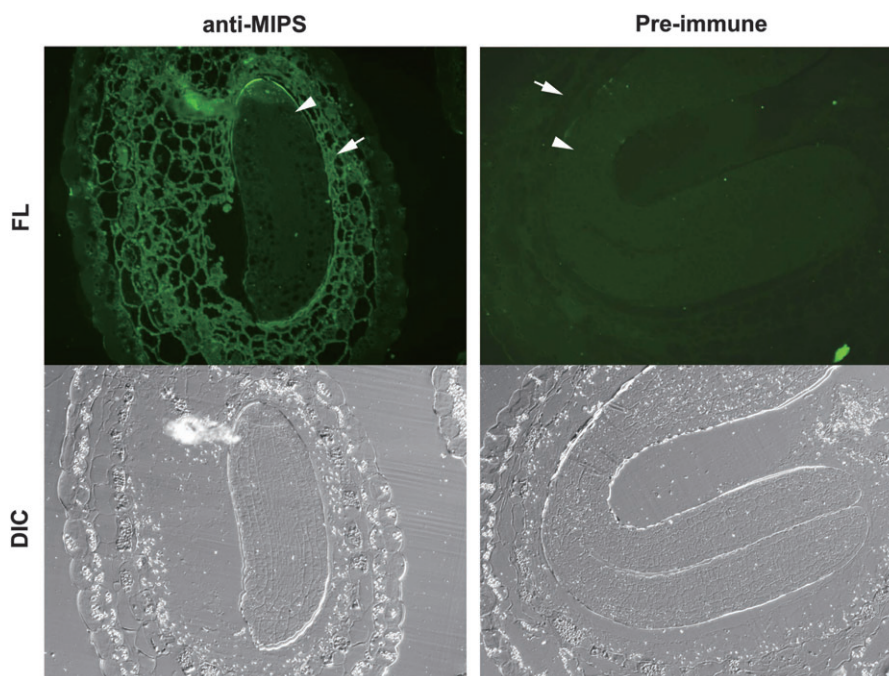


Fig. 3. Immunofluorescence microscopy of MIPS protein in mature seed sections. Sections were treated with either anti-AtMIPS2 serum (left) or pre-immune serum (right) followed by a secondary anti-rabbit antibody with a fluorescent conjugate (Alexa Fluor 488). DIC, differential interference contrast images; FL, fluorescence images. The arrowhead shows embryo and the arrow shows endosperm tissue.

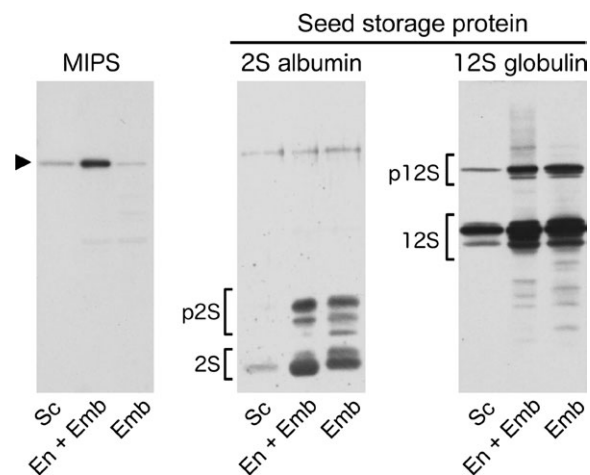


Fig. 4. Tissue specificity of MIPS and seed storage proteins in developing seeds of *Arabidopsis* as determined by immunoblot analysis with MIPS2, 2S albumin, and 12S globulin antibodies. Developing seeds (torpedo to mature stages) were separated into seed coat (Sc) and seed contents which were either left intact as endosperm and embryo (En+Emb), or washed to remove the endosperm (Emb). p2S and 2S are pro- and mature forms of 2S albumin, and p12S and 12S are pro- and mature forms of 12S globulin, respectively. The arrowhead at 60 kDa indicates MIPS.

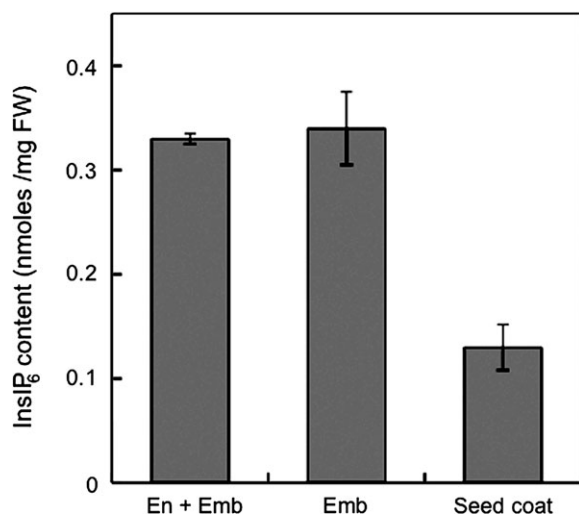


Fig. 5. InsP₆ content in endosperm, embryo tissue, and seed coat. InsP₆ was measured using ion chromatography. Values are expressed with mean \pm SE (n = 3–6).

(i.e. developing siliques, leaves, and roots). MIPS proteins may be involved not only in InsP₆ synthesis in developing seeds, but also in other physiological processes, such as raffinose metabolism (Hitz *et al.*, 2002), salt tolerance (Ishitani *et al.*, 1996; RayChaudhuri and Majumder, 1996), and ABA responses (Flores and Smart, 2000; Yoshida *et al.*, 2002), via inositol or phosphatidylinositol synthesis. In *Arabidopsis*, *AtMIPS* gene isoforms may similarly have broad functionality in different tissues. However, differences of tissue specificity and the isoform(s) that is responsible for InsP₆ synthesis in developing seeds remain unclear.

Although it was evident that all three isoforms were expressed in developing siliques (Fig. 1), InsP₆ synthesis requires many enzymatic steps after MIPS reaction. It is reasonable to suppose that the complex pathways for InsP_n synthesis exist separately in different tissues or different cellular compartments. In the present study, it was found that MIPS proteins localize in endosperm, but InsP₆ was mainly accumulated in the embryo. The relationship between MIPS reaction and InsP₆ synthesis is not direct. However, it is also known that MIPS mutation decreases InsP₆ accumulation (Hitz *et al.*, 2002). Thus, identification of MIPS localization would help to clarify the mechanism of InsP₆ synthesis during seed maturation.

Localization of *AtMIPS* proteins in developing seeds

Immunoelectron microscopy and immunofluorescent photomicroscopy of developing seeds revealed that *AtMIPS* proteins in *Arabidopsis* were predominantly localized to the cytosol within the seed endosperm. The presence of MIPS within the endosperm was further verified by immunolocalization on western blots. In Figs 2–4, a small amount of MIPS proteins was also detectable in the embryo. Although it cannot be concluded that this resulted from contamination, the largest amounts of MIPS exist in the endosperm. Unfortunately, the antibody used could not distinguish between the three MIPS isoforms, so it was not possible to determine the relative contribution of each of the proteins to the localization that was observed, and thus the specific function of the different isoforms cannot yet be elucidated. Also, the antibody could not detect post-translational modifications, such as phosphorylation. Thus, the present data may not be related to the real activity of MIPS proteins. It is important to measure the enzymatic activity of MIPS in the embryo and endosperm. This is a possible subject of future research.

In monocots, InsP₆ has been shown to accumulate in both the embryo and aleurone layer, whereas in dicots it accumulates only within the cotyledons of the embryo (Reddy and Sathe, 2002). In rice, InsP₆-containing globoids have been shown to appear within the scutellum and aleurone layers of developing seeds, which coincides with the localization of the *RINO1* (a rice *MIPS* gene) transcript (Yoshida *et al.*, 1999). In contrast, for *Arabidopsis* it is shown that *AtMIPS* proteins localized to the endosperm, whilst InsP₆ accumulated predominantly within the embryo. This raises an interesting question as to why the localization of MIPS proteins does not appear to coincide with that of accumulation of InsP₆, and suggests some degree of cooperativity between the two tissues.

Conversion from Glc-6-P to Ins(3)P₁ is considered to be one of the rate-limiting steps for InsP₆ synthesis (Hitz *et al.*, 2002; Kuwano *et al.*, 2006; Nunes *et al.*, 2006). Based on the present observations, *Arabidopsis* embryos did not contain a significant amount of MIPS relative to endosperm, and therefore are unlikely to be the site for

initial synthesis of InsP₆. It is more likely that synthesis of InsP₆ is dependent on precursors provided by the endosperm, which is consistent with that recently reported for soybean (Chiera and Grabau, 2007). In one of the pathways of InsP₆ synthesis, Ins(3)P₁ synthesized by MIPS activity is first broken down to Ins and then rephosphorylated to Ins(3)P₁. This represents a futile cycle if it occurs within one cell. Perhaps these steps are separated in different cells or tissues. However, further work to establish tissue-dependent metabolism of InsP_n metabolism in developing seeds is required.

Translocation from endosperm to embryo

During seed development, InsP₆ and minerals (Mn and Zn) have been shown to be transiently stored in charazal endosperm of *Arabidopsis* (Otegui *et al.*, 2002) or small particles of castor bean (Greenwood and Bewley, 1984). In *Arabidopsis* seed, the endosperm serves to support the growth and development of the embryo. As for most dicot seeds (including *Arabidopsis*) the endosperm is ephemeral, and stored nutrients are absorbed by the embryo as the seed matures (Berger, 1999, 2003). However, as symplasmic connections are not present between the endosperm and embryo (Patrick and Offler, 2001), nutrients must be transferred through membrane transporters or via specialized cells, such as the transfer cells of the cotyledons or other contributing parts (Thompson *et al.*, 2001). If the initial step of MIPS-mediated synthesis of InsP₆ occurs in the endosperm, and InsP₆ subsequently accumulates in the embryo, then there is a need for transport of InsP₆ or its precursors to the embryo. Whilst the presence of such transporters for transfer of phosphorylated inositols has not been reported, a recent study by Shi *et al.* (2007) has identified a role for an ABC transporter in InsP₆ accumulation in corn and it may function in the transport of phosphorylated inositols. Alternatively, it is possible that Ins(3)P₁ is dephosphorylated by inositol monophosphatase within the endosperm and transported as *myo*-inositol to the embryo via an inositol transporter. Translocated *myo*-inositol may then be phosphorylated sequentially to InsP₆ by inositol kinases. In preliminary experiments, the expression of both inositol transporter genes (four isoforms) and several InsP₃ kinase genes has been detected in siliques from *Arabidopsis* (Supplementary Fig. S2 at *JXB* online). An attempt has also been made to detect the expression differences of MIPS and those genes between the endosperm and embryo, but the expression of all genes in both tissues was always detected, because mRNA contamination could not be removed from each tissue. Clearly, there is need for a better understanding of the role of specific genes in inositol phosphate metabolism in developing seeds, and of the relationship between endosperm and embryo tissues for InsP₆ synthesis.

In the present study, it was shown that three isoforms of MIPS are expressed in developing siliques and that the MIPS protein localizes to the cytosol of the seed endosperm. Such an observation has important implications for the synthesis of InsP₆, which was found to be present predominantly within the embryo of developing and mature *Arabidopsis* seeds.

Supplementary data

Supplementary data are available at *JXB* online.

Fig. S1. Examples of a chromatogram of InsP₆ measurements with ion chromatography. (a) InsP₆ in endosperm and embryo. (b) InsP₆ in embryo after washing out with pure water. (c) InsP₆ in seed coat.

Fig. S2. Expression of inositol transporters (a) and several InsP₃ kinase genes (b) in silique, leaf, and root tissue. PPK, inositol 1,3,4-trisphosphate 5/6-kinase; ITR, inositol transporter; IPK2, Ins(1,4,5)P₃ kinase. The following primer sets were used for RT-PCR, *AtITR1* (At4g16480) 5'-GCATGTCTTATCATCTTAGCCACG-3', 5'-GCCCCAAAACACTATAGCTAAGA-3', *AtITR2* (At2g35740) 5'-ACTTGCCCTGTGTCATTTTGGCT-3' and 5'-AAGGAAGACAATGGCCAGGT-3', *AtITR3* (At2g43330) 5'-GATAGTCCAAATGGCTGGATTTC-3' and 5'-CTAAGCCAAGCACAGCGAG-3', *AtITR4* (At1g30220) 5'-CATTATCTCGCTAGGAATACTAACCG-3' and 5'-GTCCCAATCCAAGAAGAGCA-3', *PPK1* (At5g16760) 5'-TCGAACACTCAAGGCAACGA-3' and 5'-TCCGGGACACCAAATCTCTC-3', *PPK2* (At4g08170) 5'-CCGGAGGCTGTCAATAATGC-3' and 5'-CACAAGAGACCCTGGGAAG-3', *PPK3* (At4g33770) 5'-GCAGACTTGGACCCTCGTGT-3' and 5'-TTTGACCTGCGCAGATTTT-3', *AtIPK2α* (At5g07370) 5'-TAAAGGGAATGATGATGATGCTA-3' and 5'-CTAAGAATCTGCAGACTCATCTGG-3', *AtIPK2β* (At5g61760) 5'-CAATCTTGATGCAAGGAGGAG-3' and 5'-CTAGCGCCCGTTCTCAAGT-3'.

Acknowledgements

We are very grateful to Ms Kazumi Tsutsui for her excellent technical assistance and Dr Emmanuel Delhaize (CSIRO) for his kind discussion and correction of this manuscript. An EST clone (accession no. AV525103) was kindly provided by Kazusa DNA Research Institute. This work was supported by a Grant-in-Aid for Scientific Research on Priority Areas (16085204) by the Japanese Ministry of Education, Culture, Sports, Science and Technology, and CREST of JST to TM. NM was supported by a JSPS research fellowship for young scientists.

References

- Baluyot ES, Hartford CG. 1996. Comparison of polyphosphate analysis by ion chromatography and by modified end-group titration. *Journal of Chromatography A* **739**, 217–222.

- Berger F. 1999. Endosperm development. *Current Opinion in Plant Biology* **2**, 28–32.
- Berger F. 2003. Endosperm: the crossroad of seed development. *Current Opinion in Plant Biology* **6**, 42–50.
- Chiera J, Grabau E. 2007. Localization of myo-inositol phosphate synthase (GmMIPS-1) during the early stages of soybean seed development. *Journal of Experimental Botany* **58**, 2261–2268.
- Dorsch JA, Cook A, Young KA, Anderson JM, Bauman AT, Volkmann CJ, Murthy PPN, Raboy V. 2003. Seed phosphorus and inositol phosphate phenotype of barley *low phytic acid* genotypes. *Phytochemistry* **62**, 691–706.
- Flores S, Smart CC. 2000. Abscisic acid-induced changes in inositol metabolism in *Spirodela polyrrhiza*. *Planta* **211**, 823–832.
- Greenwood JS, Bewley JD. 1984. Subcellular distribution of phytin in the endosperm of developing castor bean: a possibility for its synthesis in the cytoplasm prior to deposition within protein bodies. *Planta* **160**, 113–120.
- Hara-Nishimura I, Takeuchi Y, Nishimura M. 1993. Molecular characterization of a vacuolar processing enzyme related to a putative cysteine proteinase of *Schistosoma mansoni*. *The Plant Cell* **5**, 1651–1659.
- Hatzack F, Johansen KS, Rasmussen SK. 2000. Nutritionally relevant parameters in low-phytate barley (*Hordeum vulgare* L.) grain mutants. *Journal of Agriculture and Food Chemistry* **48**, 6074–6080.
- Hitz WD, Carlson TJ, Kerr PS, Sebastian SA. 2002. Biochemical and molecular characterization of a mutation that confers a decreased raffinose and phytic acid phenotype on soybean seeds. *Plant Physiology* **128**, 650–660.
- Ishitani M, Majumder AL, Bornhouser A, Michalowski CB, Jensen RG, Bohnert HJ. 1996. Coordinate transcriptional induction of myo-inositol metabolism during environmental stress. *The Plant Journal* **9**, 537–548.
- Keller R, Brearley CA, Trethewey RN, Müller-Röber B. 1998. Reduced inositol content and altered morphology in transgenic potato plants inhibited for 1D-myoinositol 3-phosphate synthase. *The Plant Journal* **16**, 403–410.
- Kuwano M, Ohyama A, Tanaka Y, Mimura T, Takaiwa F, Yoshida KT. 2006. Molecular breeding for transgenic rice with low-phytic-acid phenotype through manipulating myo-inositol 3-phosphate synthase gene. *Molecular Breeding* **18**, 263–272.
- Lackey KH, Pope PM, Johnson MD. 2003. Expression of 1L-myoinositol-1-phosphate synthase in organelles. *Plant Physiology* **132**, 2240–2247.
- Larson SR, Rutger JN, Young KA, Raboy V. 2000. Isolation and genetic mapping of a non-lethal rice (*Oryza sativa* L.) *low phytic acid 1* mutation. *Crop Science* **40**, 1397–1405.
- Loewus FA, Murthy PPN. 2000. myo-Inositol metabolism in plants. *Plant Science* **150**, 1–19.
- Lott JNA, Spitzer E, Vollmer CM. 1979. Calcium distribution in globoid crystals of *Cucurbita* cotyledon protein bodies. *Plant Physiology* **63**, 847–851.
- Miller AL, Suntharalingam M, Johnson SL, Audhya A, Emr SD, Wentz SR. 2004. Cytoplasmic inositol hexakisphosphate production is sufficient for mediating the Gle1-mRNA export pathway. *Journal of Biological Chemistry* **279**, 51022–51032.
- Mitsuhashi N, Ohnishi M, Sekiguchi Y, Kwon Y-U, Chang Y-T, Chung S-K, Inoue Y, Reid RJ, Yagisawa H, Mimura T. 2005. Phytic acid synthesis and vacuolar accumulation in suspension-cultured cells of *Catharanthus roseus* induced by high concentration of inorganic phosphate and cation. *Plant Physiology* **138**, 1607–1614.
- Nunes AC, Vianna GR, Cuneo F, Amaya-Farfán J, de Capdeville G, Rech EL, Aragão FJ. 2006. RNAi-mediated silencing of the myo-inositol-1-phosphate synthase gene (*GmMIPS1*) in transgenic soybean inhibited seed development and reduced phytate content. *Planta* **224**, 125–132.
- Otegui MS, Capp R, Staehelin LA. 2002. Developing seeds of *Arabidopsis* store different minerals in two types of vacuoles and in the endoplasmic reticulum. *The Plant Cell* **14**, 1311–1327.
- Patrick JW, Offler CE. 2001. Compartmentation of transport and transfer events in developing seeds. *Journal of Experimental Botany* **52**, 551–564.
- Raboy V. 2003. myo-Inositol-1,2,3,4,5,6-hexakisphosphate. *Phytochemistry* **64**, 1033–1043.
- Raboy V, Gerbasi PF, Young KA, Stoneberg SD, Pickett SG, Bauman AT, Murthy PPN, Sheridan WF, Ertl DS. 2000. Origin and seed phenotype of maize *low phytic acid 1-1* and *low phytic acid 2-1*. *Plant Physiology* **124**, 355–368.
- Raychaudhuri A, Majumder AL. 1996. Salinity-induced enhancement of 1-myoinositol 1-phosphate synthase in rice (*Oryza sativa* L.). *Plant, Cell and Environment* **19**, 1437–1442.
- Reddy NR, Sathe SK. 2002. *Food phytates*. Boca Raton, FL: CRC Press.
- Sekiguchi Y, Matsunaga A, Yamamoto A, Inoue Y. 2000. Analysis of condensed phosphates in food products by ion chromatography with an on-line hydroxide eluent generator. *Journal of Chromatography A* **881**, 639–644.
- Shen X, Xiao H, Ranallo R, Wu W-H, Wu C. 2003. Modulation of ATP-dependent chromatin-remodeling complexes by inositol polyphosphates. *Science* **299**, 112–114.
- Shi J, Wang H, Hazebroek J, Ertl DS, Harp T. 2005. The maize *low-phytic acid 3* encodes a myo-inositol kinase that plays a role in phytic acid biosynthesis in developing seeds. *The Plant Journal* **42**, 708–719.
- Shi J, Wang H, Schellin K, Li B, Fallor M, Stoop JM, Meeley RB, Ertl DS, Ranch JP, Glassman K. 2007. Embryo-specific silencing of a transporter reduces phytic acid content of maize and soybean seeds. *Nature Biotechnology* **25**, 930–937.
- Shi J, Wang H, Wu Y, Hazebroek J, Meeley RB, Ertl DS. 2003. The maize low-phytic acid mutant *lpa2* is caused by mutation in an inositol phosphate kinase gene. *Plant Physiology* **131**, 507–515.
- Shimada T, Fuji K, Tamura K, Kondo M, Nishimura M, Hara-Nishimura I. 2003. Vacuolar sorting receptor for seed storage proteins in *Arabidopsis thaliana*. *Proceedings of the National Academy of Sciences, USA* **100**, 16095–16100.
- Stevenson-Paulik J, Bastidas RJ, Chiou S-T, Frye RA, York JD. 2005. Generation of phytate-free seeds in *Arabidopsis* through disruption of inositol polyphosphate kinases. *Proceedings of the National Academy of Sciences, USA* **102**, 12612–12617.
- Tan X, Calderon-Villalobos LI, Sharon M, Zheng C, Robinson CV, Estelle M, Zheng N. 2007. Mechanism of auxin perception by the TIR1 ubiquitin ligase. *Nature* **446**, 640–645.
- Thompson RD, Hueros G, Becker H-A, Maitz M. 2001. Development and functions of seed transfer cells. *Plant Science* **160**, 775–783.
- Wilcox JR, Premachandra GS, Young KA, Raboy V. 2000. Isolation of high seed inorganic P, low-phytate soybean mutants. *Crop Science* **40**, 1601–1605.
- Yoshida KT, Fujiwara T, Naito S. 2002. The synergistic effects of sugar and abscisic acid on myo-inositol-1-phosphate synthase expression. *Physiologia Plantarum* **114**, 581–587.
- Yoshida KT, Wada T, Koyama H, Mizobuchi-Fukuda R, Naito S. 1999. Temporal and spatial patterns of accumulation of the transcript of myo-inositol-1-phosphate synthase and phytin-containing particles during seed development in rice. *Plant Physiology* **119**, 65–72.