

Published in final edited form as:

J Am Chem Soc. 2008 January 9; 130(1): 195–200. doi:10.1021/ja074453g.

Enantioselective α -Arylation of Ketones with Aryl Triflates Catalyzed by Difluorophos Complexes of Palladium and Nickel

Xuebin Liao, Zhiqiang Weng, and John F. Hartwig*

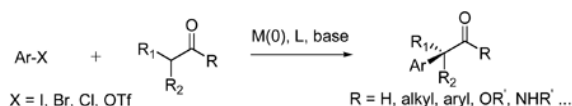
Department of Chemistry, University of Illinois at Urbana-Champaign, 600 S. Mathews Avenue, Urbana, IL 61801, and Department of Chemistry, Yale University, P.O. Box 208107, New Haven, Connecticut 06520-8107

Abstract

The asymmetric α -arylation of ketones with aryl triflates is described, and the use of this electrophile with nickel and palladium catalysts containing a segphos derivative increases substantially the scope of highly enantioselective arylations of ketone enolates. The combination of aryl triflates as reactant, difluorophos as ligand, palladium catalysts for reactions of electron-neutral to (or) electron-rich aryl triflates, and nickel catalysts for reactions of electron-poor aryl triflates led to a series of α -arylations of tetralone, indanone, cyclopentanone, and cyclohexanone derivatives with electron-rich and electron poor aryl electrophiles. Enantioselectivities ranged from 70–98% with ten examples over 90%. Systematic studies on these α -arylations have revealed a number of factors that affect enantioselectivity. Ligands containing biaryl backbones with small dihedral angles generate catalysts that react with higher enantioselectivity than related ligands with larger dihedral angles. In addition, faster rates for reactions of aryl triflates vs those for reactions of aryl bromides allow the α -arylations of aryl triflates to be conducted at lower temperatures, and this lower temperature improves enantioselectivity. Finally, studies that compare the enantioselectivities of catalytic reactions to those of stoichiometric reactions of isolated [(segphos)Pd(Ar)(Br)], [(segphos)Pd(Ar)(I)] and [(segphos)Ni(C₆H₄-4-CN)Br] suggest that catalyst decomposition affects enantioselectivity.

Introduction

Methods to generate quaternary stereocenters enantioselectively remain under development.^{1–3} Catalytic asymmetric α -arylation is an attractive method to construct such stereocenters because of the common occurrence of benzylic quaternary stereocenters in biologically active natural and unnatural products. Catalytic asymmetric α -arylation of carbonyl compounds (eq. 1) can not only generate benzylic stereocenters α to a carbonyl group, but it can generate benzylic stereocenters in chiral, non-racemic, materials containing other functionality because of the versatility of the carbonyl group. For example, this asymmetric α -arylation could ultimately be used to generate a benzylic stereocenter α to a hydroxyl group after reduction or α to an amino group after reductive amination.



(1)

Although enantioselective reactions of aryl and vinyl halides with ketones^{4–6}, amides^{7,8}, lactones⁹, and β -ketoesters¹⁰ catalyzed by palladium, nickel and copper catalysts have been reported, the scope of these reactions remains narrow. For example, the α -arylation of 2-methyltetralone catalyzed by palladium-BINAP complexes occurs in 61–88% ee with meta- and para-substituted bromoarenes, and the reactions of 2-methyl indanone occurred in only 70% ee with meta-substituted bromoarenes and formed racemic product with para-substituted bromoarenes.⁴ A similar issue in reaction scope was observed for the reactions of cyclohexanone and cyclopentanone derivatives. The reaction of a 2-methylcyclopentanone derivative with a number of aryl bromides occurred with high enantioselectivity,⁵ but the reactions of a 2-methylcyclohexanone derivative occurred with low enantioselectivity.⁴ Likewise, the α -vinylation of five-membered cyclic ketones occurred in high ee with electron rich, sterically-hindered versions of Hayashi's MOP ligand, but reactions of six-membered cyclic ketones were not reported.⁶

In addition to these limitations on reaction scope, little information has been gained on the factors that control stereoselectivity. To date, the development of these reactions has been largely empirical. For example, studies on the step that controls enantioselectivity, the origin of the role of halide in controlling enantioselectivity, and the effect of catalyst stability or instability on enantioselectivity have not been reported. Moreover, the structural features of bisphosphines containing biaryl backbones that control enantioselectivity have not been revealed.

Finally, the α -arylation of ketones has focused on reactions of aryl halides, and asymmetric α -arylation and α -vinylation of carbonyl compounds using aryl triflates has not been reported. These reagents are important to develop as electrophiles for this enantioselective chemistry because of their accessibility from phenols and ketones and because the identity or precise structures of intermediates involved in transmetalation with arylpalladium triflate complexes could be different from those involved in transmetalation with organopalladium halide complexes. Moreover, the higher reactivity of aryl triflates could allow the α -arylations with these electrophiles to be conducted at lower temperatures than the reactions with aryl halides, and one could envision obtaining higher enantioselectivities at these lower reaction temperatures.

Herein, we describe the first α -arylations of ketones using aryl triflates. Systematic studies on these α -arylations have revealed a number of factors that contribute to the control of enantioselectivity. These studies begin to show the structural and electronic features of biarylphosphines that control ee, the effect of the leaving group on enantioselectivity, and the origin of this effect of leaving group. In addition, studies that compare the enantioselectivity of catalytic reactions and of stoichiometric reactions of isolated arylpalladium complexes have revealed the effect of catalyst decomposition on the stereoselectivity. Ultimately, a combination of palladium and nickel catalysts ligated by difluorophos for reactions of two classes of aryl triflate electrophiles gives rise to a broad range of α -arylations of ketones that occur with high enantioselectivity.

Results and Discussion

Because the α -arylations of ketones catalyzed by complexes of BINAP occur with modest enantioselectivity in many cases, we investigated ligands that could improve the scope of highly enantioselective α -arylations of ketones. These studies revealed several factors that ultimately led to the final systems that catalyze the enantioselective α -arylation of five and six membered cyclic ketones with both electron-rich and electron poor aryl triflates. These factors include a small dihedral angle in the backbone of the chiral bisphosphine, the use of a somewhat electron-poor bisphosphine ligand, the use of a bisphosphine ligand that resists P-C bond cleavage, the

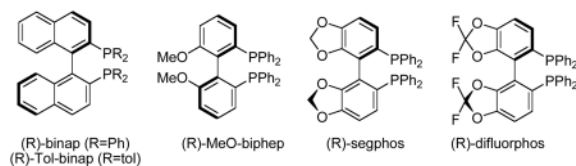
use of aryl triflates as electrophiles, and the use of one metal for reactions of electron-neutral and electron-rich aryl triflates and a second metal for reactions of electron-poor aryl triflates. These effects and the resulting scope of the α -arylations are described in the following sections.

1. Effect of Ligand Dihedral Angle and Electronic Properties

One structural feature of biaryl-linked bisphosphines that has been thought to affect enantioselectivity of many types of metal-catalyzed reactions is the backbone dihedral angle.¹¹ To determine if this parameter significantly influences the rate and selectivity of the α -arylation of ketones, we studied reactions catalyzed by palladium complexes possessing varied dihedral angles in the ligand backbone.

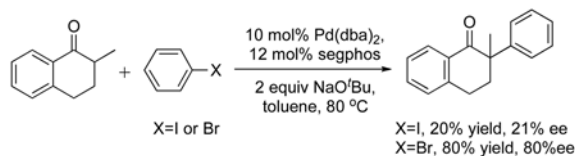
The results of a study of the effect of dihedral angle on the α -arylation of α -methyl indanone are summarized in Table 1. The dihedral angles used in this analysis are literature values derived from MM2 calculations of the free ligand.^{12,13} The data in Table 1 illustrate a dramatic effect of the dihedral angle of the biaryl-linked bisphosphines on enantioselectivity and that the magnitudes of the ee values increased with decreasing dihedral angles. These data led us to focus our subsequent studies on the segphos family of ligands.

The data in Table 1 also illustrate that the electronic properties of the biarylphosphine influenced enantioselectivity. This electronic effect was revealed by a comparison of the selectivity of the reactions conducted with segphos and the more recently reported difluorpos, which contains two difluoromethylene units in the backbone of the ligand. The reaction of the α -methyl indanone occurred with higher enantioselectivity when catalyzed by the catalyst containing difluorpos as ligand than when catalyzed by the complex containing segphos as ligand.



2. Effect of Leaving Group on Rate and Enantioselectivity

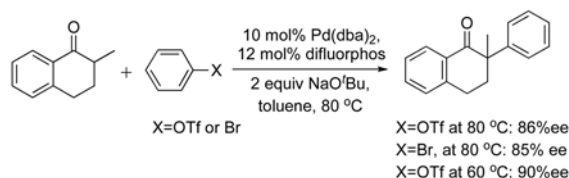
Several pieces of data imply that the leaving group on the aryl electrophile also affects enantioselectivity. These data are summarized in eq 2. First, the reaction of α -methyltetralone with *p*-iodotoluene formed the coupled product in only 21% ee, while the same reaction with *p*-bromotoluene formed the coupled product in 80% ee. The reaction of iodotoluene also occurred in a low 20% yield.



(2)

This observation that the identity of the halide affected the enantioselectivity led us to investigate the reactions of aryl triflates. As shown in eq 3, this reaction occurred with high enantioselectivity. At 80 °C the enantioselectivity of the α -arylation with phenyl triflate was similar to that of the reaction of the phenyl bromide. However, the reaction of phenyl triflate occurred faster than the reaction of phenyl bromide. Thus, this reaction could be conducted at

a lower temperature, and this lower temperature led to an asymmetric α -arylation of α -methyl tetralone that occurred with bromobenzene in a higher 90% ee.



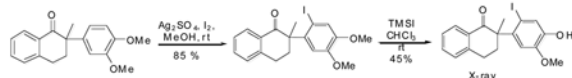
(3)

3. Scope of the palladium-catalyzed α -arylations with aryl triflates

The scope of the α -arylation of cyclic ketones with aryl triflates catalyzed by the combination of Pd(dba)₂ and difluorophos is summarized in Table 2. These examples include reactions of α -methyl tetralone, α -methyl indanone, 2-methyl 6-benzylidene cyclohexanone and 2-methyl 6-benzylidene cyclopentanone with a variety of aryl triflates that are electron neutral and electron rich.

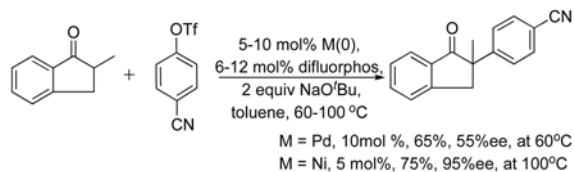
The reactions catalyzed by the difluorophos palladium species occurred in high ee and high yield in many cases with aryl groups containing meta or para substituents. The reactions of α -methyl tetralone occurred in over 90% ee with bromoarenes containing both meta and para substituents. The reactions of α -methylindanone with aryl triflates were faster than those of α -methyltetralone and occurred with substantial enantioselectivities. For example, reactions of meta-substituted aryl triflates (Table 2 entries 8 and 9) occurred with 2-methyltetralone in >80% ee.

The enantioselectivities obtained with difluorophos as ligand were typically higher than those obtained with BINAP as ligand. For example, the reaction of *p*-tolyl triflate catalyzed by the difluorophos-ligated catalyst (Table 2, entry 7) gave product in 78% ee, whereas the same reaction catalyzed by the catalyst containing BINAP formed nearly racemic product. Likewise, the reaction of 2-methyltetralone with bromobenzene catalyzed by BINAP and Pd(0) led to the coupled product in only 73% ee, but the reaction of these substrates catalyzed by difluorophos and Pd led to the coupled product in 90% ee (Table 2, entry 1). The reactions of the cyclohexanone derivative with two different aryl triflates (Table 2, entries 10, 11) formed the product in a modest 78 and 77% ee, but these values are presumably higher than the “very low ee’s” obtained in previous work with BINAP as ligand.⁴ The reaction of 2-methyl 6-benzylidene cyclopentanone with phenyl triflate (Table 2, entry 12) occurred in 95% ee, this result is still slightly higher than the value (92% ee) obtained in previous work with BINAP as ligand.⁴



(4)

To determine the absolute configuration of one of the α -arylation products, we synthesized an iodide derivative of 2-methyl-2-(3,4-dimethoxyphenyl)-tetralone (Eq 4) and obtained X-ray structural data. To obtain crystalline samples, the iodination product was subjected to demethylation conditions to produce an iodo, hydroxyphenyl derivative. The results of X-ray structural study shows the α -arylation product formed from the reaction conducted with the R enantiomer of difluorophos possessed an R configuration.



(5)

4. Nickel-Catalyzed Asymmetric α -Arylation of Ketones

The reactions of ketones with electron-poor aryl triflates catalyzed by the palladium catalyst occurred with much lower enantioselectivities than did reactions of electron-neutral or electron-rich aryl triflates. For example, the reaction of α -methyl indanone with 4-cyanophenyl trifluoromethanesulfonate shown in eq 5 formed the coupled product in a moderate ee of 55%. This limitation was overcome by using a nickel catalyst containing the same difluorophos ligand. The same reaction of α -methyl indanone with 4-cyanophenyl triflate catalyzed by the combination of Ni(COD)₂ and difluorophos as ligand formed the coupled product in 95% ee. This reaction constitutes the first enantioselective α -arylation with 2-methyl-1-indanone to occur in 95% ee or higher.¹⁴

Table 3 shows the scope of the enantioselective α -arylation of ketones with electron-poor aryl triflates catalyzed by 5 mol % Ni(COD)₂ and 6 mol % difluorophos. In addition to the high enantioselectivity for the reaction of 2-methylindanone with 4-cyanophenyl triflate shown in entry 1, the reactions of α -methyl indanone with 3- and 4-trifluoromethylphenyl triflate formed the coupled product in 86% and 96% ee, respectively. The reactions of α -methyl tetralone with electron-poor aryl triflates were similarly selective. Although these reactions formed the coupled product in lower yield, the reactions of 4-cyanophenyl and 4-trifluoromethylphenyl triflate occurred in 97% and 98% ee. Because the electron-poor aryl triflate underwent hydrolysis under the strongly basic conditions at the temperatures and times required for high conversion, an excess of aryl triflate was employed in this set of reactions.

5. Comparisons of Selectivities from Stoichiometric and Catalytic Reactions

5.1. Enantioselectivity of reactions of enolates with arylpalladium halide complexes—To identify the palladium species that controls the enantioselectivity, we conducted stoichiometric reactions of Pd(segphos)(tol)(Br), Pd(segphos)(tol)(I), with sodium enolates, and compared the yields and enantioselectivities from these stoichiometric reactions to each other and to those of the corresponding catalytic reactions. These reactions were conducted with the segphos complexes because the ee's are close to those obtained with difluorophos, and substantial amounts of this ligand were made available (see acknowledgements). Reactions were conducted with the arylpalladium halide complexes because the arylpalladium triflate species are typically too unstable to isolate, and the selectivities of the bromide and triflate complexes were similar at the same reaction temperatures.

The arylpalladium halide complexes ligated by segphos and BINAP were prepared by two different procedures.^{15,16} The arylpalladium bromide complexes were prepared by the reaction of segphos with {Pd[P(*o*-tol)₃](Br)(*p*-tol)}₂,¹⁵ whereas the arylpalladium iodide complexes were prepared by the reaction of segphos with [PdI(*p*-tol)(TMEDA)].¹⁶ These segphos compounds were characterized by standard NMR spectroscopic methods and elemental analysis.

The origin of the effect of leaving group on ee was revealed by comparing the stoichiometric reactions of the sodium enolate of α -methyl tetralone with the arylpalladium bromide and

iodide complexes. These data are summarized in Scheme 1. Reaction of the isolated *p*-tolylpalladium bromide complex with this enolate in the presence of 1 equiv of segphos to trap the Pd(0) species formed the α -aryl ketone in 75% yield and 89% ee after 1 h at 80 °C. The conditions for reaction of this complex with the enolate and the comparable yield of this reaction to that of the catalytic process show that this species is kinetically competent to be an intermediate in the reaction. Most important, the 89% ee of this stoichiometric reaction is similar to the 85% ee observed from the catalytic process.

In contrast, the reaction of the *p*-tolylpalladium iodide complex with the same enolate formed none of the α -aryl ketone product. Instead, ketone, biphenyl, PPh₃ and PPh₂(*p*-tol) were observed by GC-MS. This result leads to several conclusions. First, the low yield of the catalytic process conducted with iodoarenes results from the low yield of the transmetalation and reductive elimination sequence involving Pd(segphos)(tol)(I). Second, the product generated from the catalytic process does not form from the arylpalladium iodide intermediate ligated by segphos. Instead, the small amount of α -aryl ketone more likely forms through a different intermediate, and the factors that control the enantioselectivity of the α -arylations with iodoarenes are unlikely to be related to those that control the enantioselective reactions of segphos or binap-ligated arylpalladium halide or triflate complexes with enolates. Perhaps a product from decomposition of the arylpalladium iodide complex catalyzes the formation of the small amount of coupled product observed from reactions of iodoarenes.

A comparison of the catalytic and stoichiometric reactions of BINAP-ligated arylpalladium bromide complexes revealed clear influences of catalyst decomposition. The reaction of the sodium enolate of α -methyl indanone with the phenylpalladium bromide complex of BINAP formed the coupled product in 66% ee. This value is much higher than the 20% ee obtained from the catalytic reaction in the presence of the palladium complex of BINAP. This result implies that a large portion of the product of the reactions of 2-methylindanone with bromoarenes catalyzed by BINAP-ligated palladium is formed from an intermediate other than (BINAP)Pd(Ar)(Br).

Additional experiments revealed one more side reaction that further complicated the α -arylation of ketones and that could be leading to catalyst decomposition. Attempts to prepare (BINAP)Pd(tol)(Br), led to the formation of products from exchange of the phosphorus-bound and palladium-bound aryl groups by P-C bond cleavage, whereas (segphos)Pd(tol)(Br) was stable to exchange of these aryl groups under the same conditions. Thus, P/C bond cleavage of the BINAP complexes is faster than P-C bond cleavage of the segphos complex, and this mode of reactivity could ultimately lead to cleavage of the phosphorus from the biaryl backbone to form a less selective complex of a monophosphine.^{15,17}

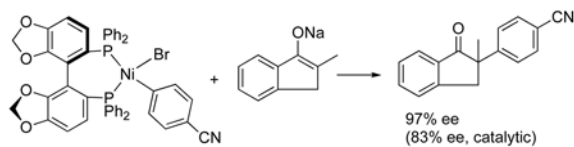
One might speculate that the difference in enantioselectivity from reactions of palladium complexes containing BINAP and segphos or difluorophos might be due solely to catalyst stability. However, we emphasize that the enantioselectivities from the stoichiometric reactions of (segphos)Pd(Ar)(Br) with the sodium enolate of 2-methylindanone is higher than that of (BINAP)Pd(Ar)(Br) with the same enolate.

5.2. Enantioselectivity of reactions of enolates with arylnickel halide complexes

—Nickel-catalyzed couplings are often considered to occur by Ni(I) intermediates,^{18–20} rather than through arylnickel(II) halide intermediates. Thus, we sought to determine if the Ni(II) complexes (segphos)Ni(Ar)(X) were kinetically and chemically competent to be intermediates in the nickel-catalyzed asymmetric α -arylation. To do so, we prepared (segphos)Ni(C₆H₄-4-CN)(Br) and studied its reactions with sodium enolates.

The arylnickel halide complex (segphos)Ni(C₆H₄-4-CN)(Br) was isolated in 50% yield from the reaction of (PPh₃)₂Ni(C₆H₄-4-CN)(Br) with segphos. The product was characterized by conventional NMR spectroscopy and elemental analysis.

The stoichiometric reaction of the sodium enolate of 2-methylindanone with (segphos)Ni(C₆H₄-4-CN)Br yielded the α -aryl ketone in 90% yield after 3 h at 80 °C. Thus, (segphos)Ni(C₆H₄-4-CN)Br is kinetically competent to be an intermediate in the nickel-catalyzed α -arylation. In addition, the product of this reaction was formed in 97% ee. This enantioselectivity is higher than the 83% ee of the catalytic reaction of 4-bromobenzonitrile with 2-methylindanone. Thus, the reaction of (segphos)Ni(C₆H₄-4-CN)Br with the sodium enolate of 2-methylindanone is sufficiently stereoselective to be involved in the C-C bond formation. The slightly lower ee of the catalytic process indicates that some of the product is formed from a less selective catalyst. If this second catalyst lacked a chiral ligand, approximately 7% of the product would be formed from such a species. In order to test the hypothesis that a product from decomposition of the segphos-nickel species catalyzes the formation of product with lower enantioselectivity we conducted the catalytic reaction with 20 mol %, instead of 5 mol %, Ni(COD)₂. If enantioselectivity is affected by catalyst stability, then reactions with this higher loading should occur with higher enantioselectivity. Indeed, the reaction with 20 mol % catalyst occurred in a higher 92% ee.



Conditions: 1:1 ratio of Ni(II) complex and sodium enolate, toluene, 1 equiv segphos, 3 h, 80 °C.

(6)

6. Summary and Conclusions

In summary, we have described the first examples of the catalytic enantioselective α -arylation of ketone enolates with aryl triflates. These reactions were conducted with a bisphosphine containing a biaryl backbone that has a small dihedral angle. The combination of aryl triflates as reactant, difluorophos as ligand, a palladium catalyst for reactions of electron-neutral and electron-rich aryl triflates, and a nickel catalyst for reactions of electron-poor aryl triflates led to a series of α -arylations that occur in much higher enantioselectivity than the previously reported reactions of aryl bromides with other catalysts.

In addition to this improvement in the scope of highly enantioselective C-C bond-forming reactions, these studies revealed a series of factors that control enantioselectivity. First, the small dihedral angle of segphos and difluorophos appears to create complexes that react with higher enantioselectivity than complexes of related ligands with larger dihedral angles. This effect has been attributed in previous studies to enhanced steric effects. It has been proposed that the smaller dihedral angle causes the aryl groups of the phosphine to project closer to the incoming substrates.¹¹ Second, the faster reactions of aryl triflates vs aryl bromides allows the reactions to be conducted at lower temperature, and this lower temperature leads to higher enantioselectivity. Third, the identity of the halide or pseudohalide can affect enantioselectivity by altering the ability of the complex to undergo transmetalation and by affecting the stability of the catalyst. Fourth, an appropriate pairing of the catalyst with the electronic properties of the aryl group, although empirical, leads to a set of α -arylation processes that encompass reactions of electron-rich, electron-neutral, and electron-poor aryl triflates. Fifth, the stability of the ligand toward P-C bond cleavage affects reaction yield and might affect the stability of

the catalyst toward formation of achiral or less selective chiral catalysts. Ultimately, the identification and control of a combination factors that control enantioselectivity has led to sufficient improvements in enantioselectivities to create reactions with ee values that are useful for applications in natural products synthesis. Studies on the applications of this reaction in natural product synthesis are ongoing.

Experimental Section

General Methods

Reactions were conducted using standard drybox techniques. ^1H and ^{13}C NMR spectra were recorded in CDCl_3 on a 400 or 500 MHz spectrometer with tetramethylsilane or residual protiated solvent used as a reference, and coupling constants are reported in hertz (Hz). Chromatographic purifications were performed by flash chromatography using silica gel (200–400 mesh) or preparative TLC. The yields of the coupled products included in all tables refer to isolated yields. Products that had been reported previously were isolated in greater than 95% purity, as determined by ^1H and ^{13}C NMR, and copies of spectra are provided in Supporting Information. All ^{13}C NMR spectra were proton decoupled. Enantioselectivities were measured by HPLC using the indicated columns and conditions.

Representative Procedure for the Asymmetric Arylation of Ketones with Aryl Triflates Using Pd(0)/Difluorophos (Table 2, Entry 1)

To a screw-capped vial containing difluorophos (8.2 mg, 0.012 mmol), $\text{Pd}(\text{dba})_2$ (5.8 mg, 0.010 mmol), NaO^tBu (19.2 mg, 0.200 mmol), and 2-methyltetralone (16.0 mg, 0.100 mmol) in toluene (2.0 mL) was added phenyl triflate (31.4 mg, 0.200 mmol). The vial was sealed with a cap containing a PTFE septum and removed from drybox. The reaction mixture was stirred at 60°C for 48 h. The crude reaction was then cooled to room temperature and quenched with ice water. The resulting solution was then diluted with ethyl acetate (15 mL) and washed with brine. The organic phase with dried over Na_2SO_4 filtered, and concentrated at reduced pressure. The residue was then purified by preparative TLC (hexane/ether = 97:3) to provide 19.1 mg (81% yield) of product. ^1H NMR (CDCl_3 , 500 MHz): δ 1.45 (s, 3H), 2.12–2.22 (m, 1H), 2.51–2.57 (m, 1H), 2.71–2.77 (m, 2H), 7.03 (d, J = 7.6 Hz, 1H), 7.09–7.26 (m, 6H), 7.33 (td, J = 7.3, 1.4 Hz, 1H), 8.08 (dd, J = 7.8, 1.0 Hz, 1H). ^{13}C NMR (CDCl_3 , 125 MHz): δ 26.3, 27.3, 36.5, 50.7, 126.6, 126.8, 126.9, 128.2, 128.8, 128.9, 132.9, 133.3, 142.3, 143.8, 201.6. Chiral HPLC conditions: Chiralcel AD-H column; solvent, hexane/isopropanol (96.5/3.5); flow rate, 0.5 mL/min; UV lamp, 254 nm. $[\alpha]_D^{26} = +179$ (c = 0.24, CHCl_3).

Representative Procedure for the Asymmetric Arylation of Ketones with Aryl Triflates Using Ni(0)/Difluorophos (Table 3, Entry 1)

To a screw-capped vial containing difluorophos (10.3 mg, 0.0150 mmol), $\text{Ni}(\text{COD})_2$ (3.5 mg, 0.016 mmol), NaO^tBu (48.0 mg, 0.500 mmol) and 2-methylindanone (36.5 mg, 0.250 mmol) in toluene (2.0 mL) were added 4-cyanophenyl trifluoromethanesulfonate (188 mg, 0.750 mmol). The vial was sealed with a cap containing a PTFE septum and removed from drybox. The reaction mixture was stirred at 80°C for 60 h. The crude reaction was then cooled to room temperature and quenched with ice water. The resulting solution was then diluted with ethyl acetate (20 mL) and washed with brine. The organic phase was dried over Na_2SO_4 filtered, and concentrated at reduced pressure. The residue was then purified by chromatography on silica gel, eluting with hexane/ether (80:20) to provide the 54.6 mg (84% yield) of the product. ^1H NMR (CDCl_3 , 500 MHz): δ 1.59 (3H, s), 3.27 (1H, d, J = 17.4 Hz), 3.48 (1H, d, J = 17.4 Hz), 7.35–7.39 (3H, m), 7.43 (1H, d, J = 7.9 Hz), 7.51 (2H, d, J = 8.4 Hz), 7.60 (1H, t, J = 7.4 Hz), 7.74 (1H, d, J = 7.8 Hz). ^{13}C NMR (CDCl_3 , 125 MHz): δ 23.5, 43.3, 52.2, 109.5, 117.7, 124.1, 125.5, 126.1, 127.1, 131.3, 134.0, 134.6, 148.2, 151.0, 206.3. Anal. Calcd. For $\text{C}_{17}\text{H}_{13}\text{NO}$: C, 82.57; H, 5.30; N, 5.66. Found: C, 82.27; H, 5.28; N, 5.65. Chiral HPLC

conditions: Chiralcel OB-H column; solvent, hexane/isopropanol (80/20); flow rate, 1.0 mL/min; UV lamp, 254 nm. $[\alpha]_D^{26} = -56.7$ ($c = 0.22$, CHCl_3)

Supplementary Material

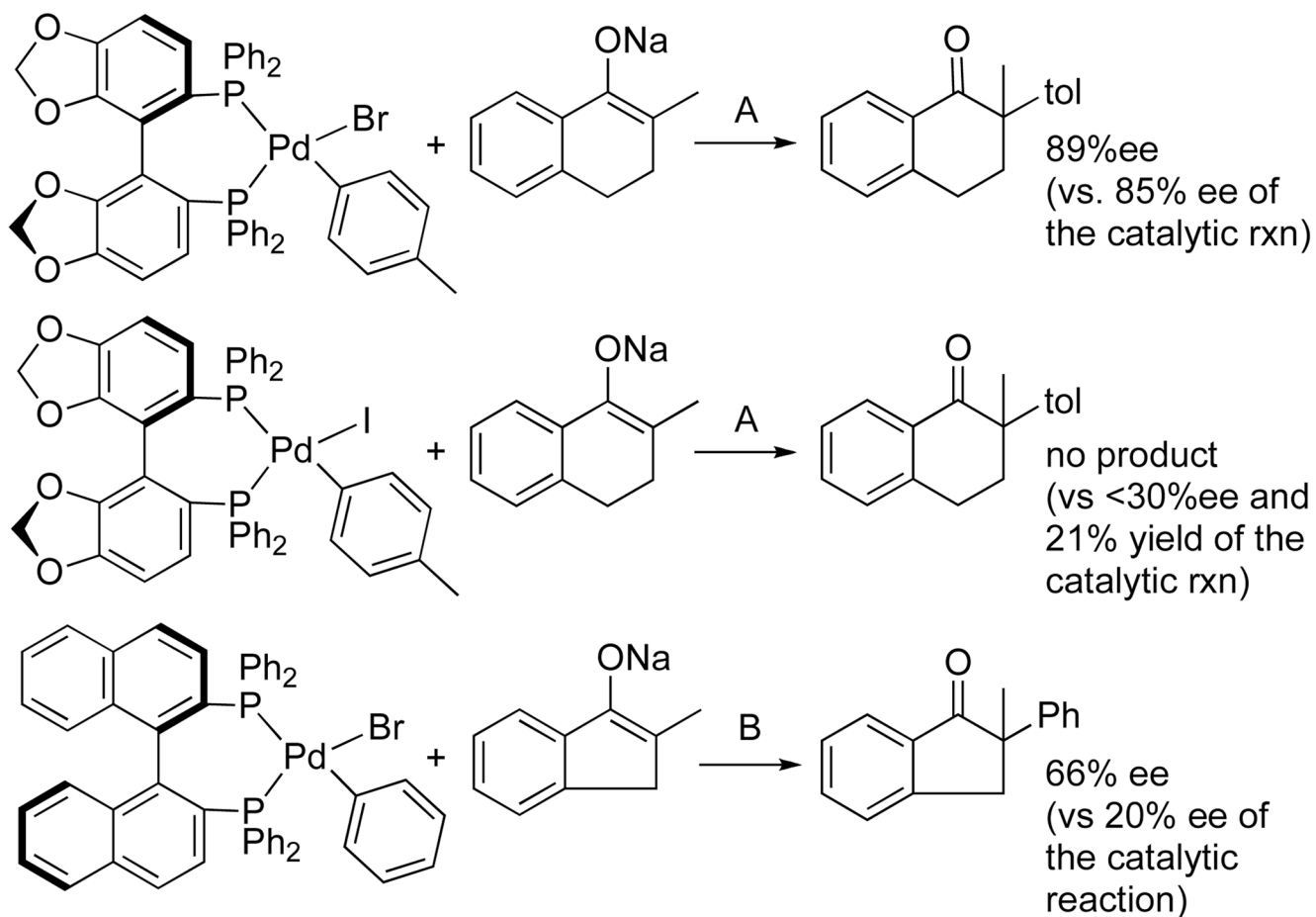
Refer to Web version on PubMed Central for supplementary material.

Acknowledgements

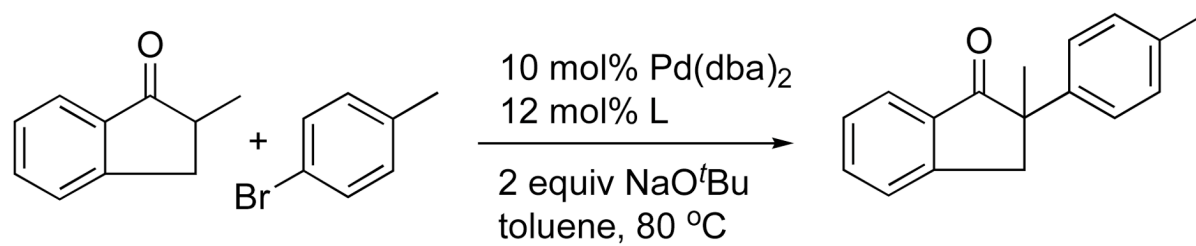
We thank the NIH (NIGMS GM-58108) for support of this work. We also thank Takasago Int. Co. for gifts of sephos and Johnson-Matthey for a gift of palladium salts.

References

1. Christoffers J, Mann A. *Angew Chem Int Ed* 2001;40:4591.
2. Corey EJ, Guzman-Perez A. *Angew Chem Int Ed* 1998;37:389.
3. Douglas CJ, Overmann LE. *Proc Nat Acad Sci USA* 2004;42:1688.
4. Åhman J, Wolfe JP, Troutman MV, Palucki M, Buchwald SL. *J Am Chem Soc* 1998;120:1918.
5. Hamada T, Chieffi A, Åhman J, Buchwald SL. *J Am Chem Soc* 2002;124:1261. [PubMed: 11841295]
6. Chieffi A, Kamikawa K, Åhman J, Fox JM, Buchwald SL. *Org Lett* 2001;3:1897. [PubMed: 11405739]
7. Lee S, Hartwig JF. *J Org Chem* 2001;66:3402. [PubMed: 11348123]
8. Arao T, Kondo K, Aoyama T. *Chem Pharm Bull* 2006;54:1743. [PubMed: 17139116]
9. Spielvogel DJ, Buchwald SL. *J Am Chem Soc* 2002;124:3500. [PubMed: 11929227]
10. Xie X, Chen Y, Ma D. *J Am Chem Soc* 2006;128:16050. [PubMed: 17165754]
11. Shimizu H, Nagasaki I, Saito T. *Tetrahedron* 2005;61:5405.
12. Zhang Z, Qian H, Longmire J, Zhang X. *J Org Chem* 2000;65:6223. [PubMed: 10987964]
13. Juelin S, Duprat de Paule S, Ratovelomanana-Vidal V, Genêt J-P, Champion N, Dellis P. *Angew Chem Int Ed* 2004;43:320.
14. Recently, Chan et al reported reactions of aryl bromides with 2-methyl indanone and 2-methyl tetralone catalyzed by the combination of $\text{Ni}(\text{COD})_2$ and P-PHOS in high ee's. To compare the selectivities in Table 3 to those with the catalyst containing P-PHOS, we conducted the reactions of 2-methyltetralone with 4-bromobenzonitrile under the reported conditions. We have been unable to obtain the same high ee's as were reported. In the hands of several different investigators in our laboratory with different batches of $\text{Ni}(\text{COD})_2$ and two different suppliers of NaO^tBu we obtained 38–46% ee for the reaction of 2-methyltetralone with 4-bromobenzonitrile. Thus, the reactions in Table 3 comprise a set of α -arylations that occur in higher yields than we have been able to obtain with any other catalyst. See: Chen G, Kwong FY, Chan HO, Yu WY, Chan ASC. *Chem Commun* 2006:1413.
15. Alcazar-Roman LM, Hartwig JF, Rheingold AL, Liable-Sands LM, Guzei LA. *J Am Chem Soc* 2000;122:4618.
16. Markies BA, Canty AJ, de Graaf W, Boersma J, Janssen MD, Hogerheide MP, Smeets WJJ, Spek AL, van Koten G. *J Organomet Chem* 1994;482:191.
17. Goodson FE, Wallow TI, Novak BM. *J Am Chem Soc* 1997;119:12441.
18. Morrell DG, Kochi JK. *J Am Chem Soc* 1975;97:7262.
19. Bakac A, Espenson JH. *J Am Chem Soc* 1986;108:719.
20. Anderson TJ, Jones GD, Vicic DA. *J Am Chem Soc* 2004;126:8100. [PubMed: 15225035]

**Scheme 1.**

Conditions: A: 1:1 ratio of Pd(II) complex to sodium enolate, toluene, 1 equiv segphos, 80 °C, 1 h; B: 1:1 ratio of Pd(II) complex to sodium enolate, toluene, 1 equiv BINAP, 80 °C, 1 h

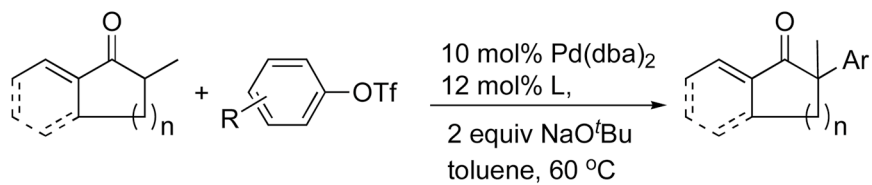
Table 1Effect of dihedral angle of the biaryl backbone on enantioselective α -arylation of α -methylindanone

Entry	Ligand	Dihedral angle	ee (%) ^a
1	(R)-Tol-binap		6
2	(R)-binap	87	9
3	(R)-MeO-biphep	87	11
4	(R)-segphos	67	72
5	(R)-difluorphos	67	78

^a determined by chiral HPLC.

Table 2Asymmetric α -arylation of ketones with aryl triflates catalyzed by Pd(dba)₂/difluorophos

Entry	ketone	ArOTf	product	isolated yield
1				81%, 90%ee
2				85%, 92%ee
3				79%, 92%ee
4				83%, 95%ee
5				79%, 91%ee
6				77%, 70%ee
7				79%, 78%ee
8				84%, 89%ee
9				78%, 82%ee
10				80%, 78%ee



Entry	ketone	ArOTf	product	isolated yield
11				70%, 77% ee
12				70%, 95% ee

L: difluorophos; ee determined by chiral HPLC

Table 3Asymmetric α -arylation of ketones with aryl triflates catalyzed by Ni(COD)₂/difluorophos

Entry	ketone	ArOTf	product	isolated yield
1				84%, 95% ee ^a
2				69%, 96% ee ^a
3				70%, 86% ee ^a
4				55%, 97% ee ^b
5				40%, 98% ee ^b

L: difluorophos;

^a at 85 °C;^b at 100 °C