

# LC2, the *Chlamydomonas* Homologue of the *t* Complex-encoded Protein Tctex2, Is Essential for Outer Dynein Arm Assembly

Gregory J. Pazour,\* Anthony Koutoulis,\*<sup>†</sup> Sharon E. Benashski,<sup>‡</sup> Bethany L. Dickert,\* Hong Sheng,\* Ramila S. Patel-King,<sup>‡</sup> Stephen M. King,<sup>‡</sup> and George B. Witman\*<sup>§</sup>

\*Department of Cell Biology, University of Massachusetts Medical School, Worcester, Massachusetts 01655; <sup>†</sup>Cell Biology Group, School of Plant Science, The University of Tasmania, Hobart, Tasmania 7001 Australia; and <sup>‡</sup>Department of Biochemistry, University of Connecticut Health Center, Farmington, Connecticut 06030-3305

Submitted June 7, 1999; Accepted July 30, 1999  
Monitoring Editor: Tim Stearns

Tctex2 is thought to be one of the distorter genes of the mouse *t* haplotype. This complex greatly biases the segregation of the chromosome that carries it such that in heterozygous *+t* males, the *t* haplotype is transmitted to >95% of the offspring, a phenomenon known as transmission ratio distortion. The LC2 outer dynein arm light chain of *Chlamydomonas reinhardtii* is a homologue of the mouse protein Tctex2. We have identified *Chlamydomonas* insertional mutants with deletions in the gene encoding LC2 and demonstrate that the LC2 gene is the same as the *ODA12* gene, the product of which had not been identified previously. Complete deletion of the LC2/*ODA12* gene causes loss of all outer arms and a slow jerky swimming phenotype. Transformation of the deletion mutant with the cloned LC2/*ODA12* gene restores the outer arms and rescues the motility phenotype. Therefore, LC2 is required for outer arm assembly. The fact that LC2 is an essential subunit of flagellar outer dynein arms allows us to propose a detailed mechanism whereby transmission ratio distortion is explained by the differential binding of mutant (*t* haplotype encoded) and wild-type dyneins to the axonemal microtubules of *t*-bearing or wild-type sperm, with resulting differences in their motility.

## INTRODUCTION

Dynein ATPases are microtubule-based molecular motors that provide force for a variety of important cellular processes (reviewed by Holzbaur and Vallee, 1994; Witman *et al.*, 1994). Cytoplasmic dyneins are involved in vesicle transport, Golgi localization, nuclear migration, spindle formation and orientation, mitosis, and flagellar assembly. Inner arm and outer arm axonemal dyneins provide the force for flagellar and ciliary beating.

All characterized dyneins contain one or more heavy chains (HCs) that are associated with smaller polypeptides termed intermediate chains (ICs), light intermediate chains, and light chains (LCs). For example, *Chlamydomonas* outer

arm dynein, which is the most well characterized axonemal dynein, contains three HCs, two ICs, and eight LCs (Table 1). Each HC has a globular head domain containing the site for ATP hydrolysis and a fibrous stem domain that extends to the base of the dynein, where the ICs and most of the LCs are located in a discrete complex. The heads of the HCs interact with the B-tubule of the opposing doublet microtubule to generate force, whereas the ICs are involved in anchoring the dynein to the A-tubule of the doublet microtubule (King *et al.*, 1995; Wilkerson *et al.*, 1995) and regulating dynein activity (Mitchell and Kang, 1993). In contrast, little is known regarding the function(s) of the dynein LCs.

The need for more information on the dynein LCs has been underscored recently by 1) the discovery that LCs are associated with cytoplasmic dynein (King *et al.*, 1996a), indicating that they are likely to have a universal role in dynein structure and/or function, and 2) the finding that two dynein LCs are encoded within a large region of mouse chromosome 17, which, in *t* mice, corresponds to the *t* haplotype (King *et al.*, 1996b; Patel-King *et al.*, 1997). The *t* haplotype has four inversions relative to the wild-type chro-

<sup>§</sup> Corresponding author. E-mail address: george.witman@umassmed.edu.

Abbreviations used: HC, heavy chain; IC, intermediate chain; LC, light chain; ODA-DC, outer dynein arm docking complex; PVDF, polyvinylidene difluoride; RFLP, restriction fragment length polymorphism; UTR, untranslated region.

**Table 1.** Proteins associated with the outer dynein arm of *Chlamydomonas*

Protein	Mass (D)	Gene	Comments	Reference <sup>a</sup>
HC $\alpha$	503,613	<i>ODA11</i>	ATPase	1, 2, 3
HC $\beta$	519,961	<i>ODA4</i>	ATPase	2, 4
HC $\gamma$	512,836	<i>ODA2</i>	ATPase	4, 5, 6
IC1	76,393	<i>ODA9</i>	Microtubule binding	4, 7
IC2	63,520	<i>ODA6</i>	Regulation	4, 8
LC1	22,150		Leucine-rich repeat protein	9
LC2	15,825	<i>ODA12</i>	Tctex2 homologue	10, this work
LC3	17,365		Thioredoxin homologue	11
LC4	17,788		EF-hand protein	12
LC5	14,179		Thioredoxin homologue	11
LC6	13,857	<i>ODA13</i>	LC8 homologue	13, 14
LC7	11,928		Roadblock homologue	15
LC8	10,322	<i>FLA14</i>	Multiple flagellar defects	13, 16
DC1	83,377	<i>ODA3</i>	ODA-DC polypeptide	4, 17, 18
DC2	62,234	<i>ODA1</i>	ODA-DC polypeptide	4, 17
DC3	21,341	<i>ODA14</i>	ODA-DC polypeptide	17, 19

<sup>a</sup> 1, Sakakibara *et al.* (1991); 2, Mitchell and Brown (1994); 3, Mitchell and Brown (1997); 4, Kamiya (1988); 5, Mitchell and Rosenbaum (1985); 6, Wilkerson *et al.* (1994); 7, Wilkerson *et al.* (1995); 8, Mitchell and Kang (1991); 9, Benashski *et al.* (1999); 10, Patel-King *et al.* (1997); 11, Patel-King *et al.* (1996); 12, King and Patel-King (1995a); 13, King and Patel-King (1995b); 14, Pazour and Witman (unpublished data); 15, Bowman *et al.* (1999); 16, Pazour *et al.* (1998); 17, Takada *et al.* (1996); 18, Koutoulis *et al.* (1997); 19, Casey *et al.* (1998).

mosome; these inversions suppress recombination, so that mutations arising in the *t* haplotype are kept together (Silver, 1993). This portion of chromosome 17 has been the subject of intense study because the *t* haplotype is inherited in a non-Mendelian manner. Heterozygous *+t* males transmit the *t*-bearing chromosome to >95% of their offspring, a phenomenon known as transmission ratio distortion or meiotic drive. This is due to the concerted action of three or four *t*-encoded distorter genes acting on a *t*-encoded responder gene (Lyon, 1984). In the presence of the *t* responder, the *t* distorters act in an additive manner to increase the percent of offspring that carry the *t*-bearing chromosome (for review, see Silver, 1985, 1993). Apparently the *t*-encoded versions of the distorter and responder genes contain mutations that give the *t* haplotype a selective advantage over the wild-type homologue. The identity and function of the responder gene product is unknown (Ewulonu *et al.*, 1996), but two of the putative distorter gene products (Tctex1 and Tctex2) are dynein LCs. Tctex1 (Lader *et al.*, 1989) is a homologue of a *Chlamydomonas* inner arm dynein LC (Harrison *et al.*, 1998) and also is a subunit of brain cytoplasmic dynein (King *et al.*, 1996b). Tctex2 (Huw *et al.*, 1995) is a homologue of a *Chlamydomonas* outer arm dynein LC termed LC2 (Patel-King *et al.*, 1997). A third distorter gene product also may be a dynein subunit, because the Dnahc8 dynein HC (Vaughan *et al.*, 1996) maps at the site of the distorter gene Tcd2 (Harrison *et al.*, 1998). Consequently, it has been hypothesized that the non-Mendelian transmission of the *t* haplotype is due to its effect on sperm motility through dynein subunit interactions (Patel-King *et al.*, 1997; Harrison *et al.*, 1998). However, the mechanism by which this might work remains elusive.

Much information is now available on the structure of the *Chlamydomonas* outer dynein arm polypeptides, including the LCs. cDNAs encoding all 13 polypeptides in the outer arm have been isolated and sequenced; similarly, sequences have been obtained for the cDNAs that encode three subunits of the outer dynein arm docking complex (ODA-DC),

a heterotrimeric structure closely associated with the outer arm and necessary for outer arm assembly (Takada and Kamiya, 1994; Takada *et al.*, 1996; Koutoulis *et al.*, 1997; Casey *et al.*, 1998) (Table 1). In some cases, the sequences suggest possible functions for their respective gene products. However, more definitive information on the roles of the outer arm polypeptides has been obtained from analysis of mutants with defects in specific chains. Sixteen genes (*ODA1–ODA14*, *PF13*, and *PF22*) have been identified that affect outer arm assembly. Mutations in the *ODA* genes cause defects in the outer dynein arms and slow jerky swimming (Kamiya, 1988), whereas defects in the *PF* genes cause outer arm defects and paralyzed flagella such that the cells are not motile (Huang *et al.*, 1979). Five of these genes encode the three dynein HCs and two ICs of the outer arm; three others encode subunits of the ODA-DC (Table 1). An additional gene, *FLA14*, encodes LC8, an *M<sub>r</sub>* 8000 LC that is a subunit of outer arm dynein and also of cytoplasmic dynein, inner arm dynein II, and myosin V (King and Patel-King, 1995b; King *et al.*, 1996a; Espindola *et al.*, 1996; Harrison *et al.*, 1998; Pazour *et al.*, 1998). Mutations in most of the identified genes result in loss of the outer arm; deletion of *FLA14* results in loss of intraflagellar transport (Rosenbaum *et al.*, 1999) and defects in the assembly of inner and outer arms and radial spokes. Unfortunately, no mutations have been identified in the genes that encode LCs specific for the outer arm dynein, so there is no genetic data on the roles of LC1–LC7 in outer arm assembly or function.

In an effort to learn more about the outer arm dynein LCs, we are taking a reverse genetics approach wherein we screen insertional mutants for defects in these chains. Insertional mutagenesis in *Chlamydomonas* is based on the fact that when *Chlamydomonas* is transformed, the exogenous DNA inserts at random into the nuclear genome and either disrupts a gene at the point of insertion or, more commonly, causes the deletion of a large block of DNA flanking the insertion site (Tam and Lefebvre, 1993). In either case, the

result is a restriction fragment length polymorphism (RFLP) that can be detected in Southern blots using a DNA probe for the affected gene. Inasmuch as cDNAs are available for all of the outer dynein arm LCs, it should be possible to use these cDNAs to identify mutants with defects in the LC genes. Indeed, we recently used this approach to identify the mutants in which LC8 was deleted (Pazour *et al.*, 1998).

In this work, we report two insertional mutants with defects in the gene encoding LC2, an outer arm dynein LC that is the homologue of the mouse Tctex2 protein. This gene previously was named *ODA12* (Koutoulis *et al.*, 1997), but its product was not identified. Complete deletion of the LC2 gene results in complete loss of the outer dynein arm and impaired motility; transformation of the deletion mutant with the cloned LC2 gene restores the outer arm and rescues the motility phenotype. Therefore, LC2 has an essential role in outer arm assembly. This is the first mutation to be identified in an outer arm-specific LC, and the first evidence that loss of a single dynein LC can have a deleterious effect on flagellar function. The results suggest a specific model in which mutant (*t* haplotype-encoded) and wild-type dyneins differentially bind to axonemes of *t*-bearing or wild-type sperm, with resulting differences in their motility that ultimately lead to non-Mendelian transmission of the *t* locus.

## MATERIALS AND METHODS

### Strains

*Chlamydomonas reinhardtii* strains used in this work include g1 (*nit1*, *agg1*, *mt+*) (Pazour *et al.*, 1995), 1330.1 (*ac14*, *nit1*, *NIT2*, *mt-*) (Pazour, unpublished data), 137c (*nit1*, *nit2*, *mt+*), H8- (*arg7*, *mt-*), H11+ (*arg7*, *mt+*) (Tam and Lefebvre, 1993), CC2290 (*mt-*) (Gross *et al.*, 1988), CC2236 (*oda5*, *mt+*) (Kamiya, 1988), CC2240 (*oda7*, *mt+*) (Kamiya, 1988), CC2242 (*oda8*, *mt+*) (Kamiya, 1988), CC2492 (*pf13a*, *mt+*) (Huang *et al.*, 1979), and CC1382 (*pf22*, *mt+*) (Huang *et al.*, 1979). Strains produced in the course of this study include F56 (*oda12-1::NIT1*, *ac14*, *nit1*, *mt-*) and V3 (*oda12-2::NIT1*, *nit1*, *mt+*), generated by insertional mutagenesis of 1330.1 and g1, respectively, 2081.2 (*oda12-1::NIT1*, *mt-*; offspring of F56 × 137c cross), 2567.1 (*oda12-1::NIT1*, *arg7*; offspring of 2081.2 × H11+ cross), and transformants S1, S2, S3, S4, S5, and S20 obtained by transforming 2567.1 with *ODA12* genomic clones and pARG7.8 (Debuchy *et al.*, 1989).

### Growth Medium

*Chlamydomonas* was grown in the following media: M (Sager and Granick [1953] medium I altered to have 0.0022 M KH<sub>2</sub>PO<sub>4</sub> and 0.00171 M K<sub>2</sub>HPO<sub>4</sub>), M - N (M medium without nitrogen), R (M medium plus 0.0075 M sodium acetate), R + Arg (R medium plus 50 μg/ml arginine), SGII/NO<sub>3</sub> (Sager and Granick [1953] medium II modified to have 0.003 M KNO<sub>3</sub> as the nitrogen source), and M - N + KNO<sub>3</sub> (M - N medium plus 0.003 M KNO<sub>3</sub>).

### Transformation

Transformation was performed using the glass bead method of Kindle (1990) as described by Pazour *et al.* (1995). The original insertional mutant library was made by transforming strains g1 and 1330.1 with the linearized plasmid pGP505 containing the *NIT1* gene (Fernandez *et al.*, 1989) as described previously (Pazour *et al.*, 1995; Koutoulis *et al.*, 1997). Strain 2567.1, an *arg7* derivative of F56, was cotransformed with the pARG7.8 plasmid containing the *ARG7* gene (Debuchy *et al.*, 1989) and phage or plasmid clones containing the LC2 gene. *NIT1* transformants were selected on SGII/NO<sub>3</sub> medium; *ARG7* transformants were selected on R medium.

### Analysis of Swimming Speeds

Swimming speed was calculated using an ExpertVision Motion Analysis (Santa Rosa, CA) system. Cells were observed with dim red illumination, and their positions were recorded every 67 ms by the MotionAnalysis system (Moss *et al.*, 1995). Subsequently, paths were determined, and the speed of individual cells was calculated using the speed operator. The final result is the average of >100 cells.

### Genetic Analysis

Mating and tetrad analyses were performed as described by Levine and Ebersold (1960) and Harris (1989). Cells of each mating type were grown on solid medium (R or R + Arg) and resuspended in M - N liquid medium. After pellicles became apparent in 1 or 2 d, the mixture was plated on solid M medium; the plates were allowed to dry and placed in the dark for 6–10 d. Zygotes were hatched on solid R or R + Arg medium and dissected using a glass needle. The meiotic progeny were allowed to grow for 3–5 d and then transferred to 5 ml of liquid R or R + Arg medium. Cells were allowed to grow for 2–5 d and then scored for motility by microscopic observation of cells illuminated with dim red light. The *arg7* phenotype was scored by comparing cell growth on R versus R + Arg medium.

### Electron Microscopy

Cells were fixed in glutaraldehyde (Hoops and Witman, 1983) and processed as described by Wilkerson *et al.* (1995).

### Axoneme Isolation, Electrophoresis, and Immunoblotting

Wild-type and *oda12* strains were deflagellated with dibucaine, and the resulting flagella were isolated by standard procedures (Witman, 1986). After demembration with Nonidet P-40, axonemes were placed in SDS sample buffer and heated at >95°C for several minutes. All samples were electrophoresed in 5–15% acrylamide gradient gels (King *et al.*, 1986). Gels were blotted to polyvinylidene difluoride (PVDF) membrane (Immobilon-P; Millipore, Waters, Milford, MA) by the two-step procedure of Otter *et al.* (1987). To detect dynein polypeptides, blots were probed with monoclonal antibody 1878A (specific for IC1; King *et al.*, 1985), rabbit polyclonal EU51 (specific for IC140; Yang and Sale, 1998), or affinity-purified rabbit polyclonal antibody R5391 (specific for LC2; Patel-King *et al.*, 1997) as described by Pazour *et al.* (1998).

### Cloning the ODA12 Locus

To obtain genomic clones of the *ODA12* locus, *Chlamydomonas* genomic DNA was partially digested with *Sau3AI* and size fractionated by NaCl gradient centrifugation. The fraction containing DNA fragments in the 10- to 20-kbp range was ligated into the *Bam*HI site of Lambda DashII (Stratagene, San Diego, CA) and packaged in vitro using Gigapack II extracts (Stratagene). The library was screened by hybridization with the LC2 cDNA, and three phage clones (λODA12#8, λODA12#17, and λODA12#20) were obtained. The *Eco*RI insert of λODA12#17 was subcloned into the *Eco*RI site of pKS+ (Stratagene) and named pHS44. pBD14 was constructed by cloning the 3.1-kbp *Hind*III fragment of pHS44 into the *Hind*III site of pKS+. pBD17 was constructed by cloning the 5.7-kbp *Kpn*I-*Sal*I fragment of pHS44 into pKS+ that had been cut with *Sal*I and *Kpn*I.

### Other Procedures

DNA was isolated by digesting ~0.3 ml of packed cells with 0.5 ml of proteinase K (1 mg/ml) in 5% sodium lauryl sulfate, 20 mM EDTA, and 20 mM Tris, pH 7.5, at 50°C for 12–16 h. Ammonium acetate was added to 1.5 M, the mixture was extracted once with



50% phenol and 50% chloroform and once with chloroform, and then the DNA was precipitated with isopropyl alcohol. DNA was resuspended in 10 mM Tris and 1.0 mM EDTA, pH 8.0, and digested with *Pst*I or *Pvu*II. Gel electrophoresis and Southern blotting were performed according to standard procedures (Sambrook *et al.*, 1987).

## RESULTS

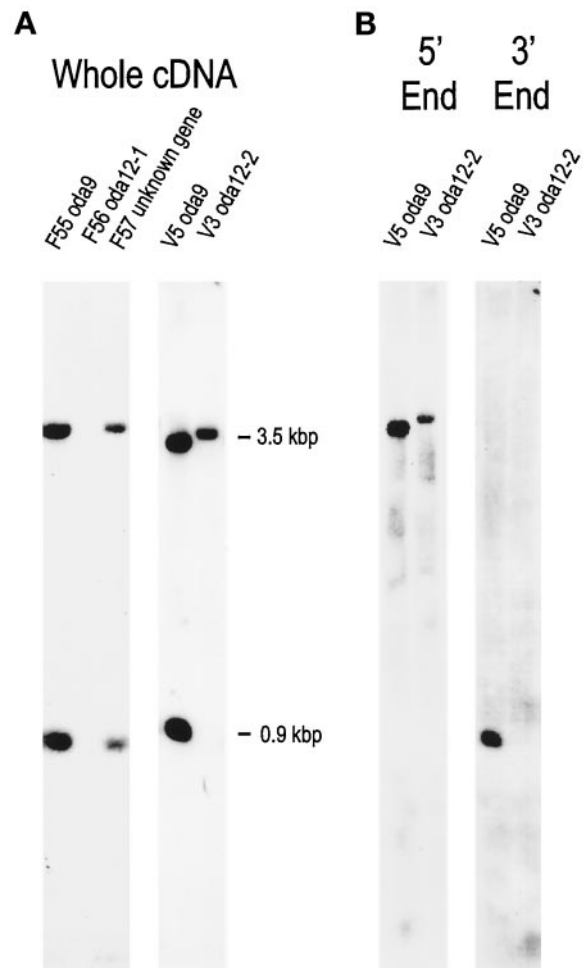
### Identification of Mutants with Defects in the LC2 Gene

We previously described the isolation of a large number of *Chlamydomonas* insertional mutants with defects in phototaxis, cell motility, and flagellar assembly (Pazour *et al.*, 1995, 1998; Koutoulis *et al.*, 1997). Because the mutations in these cell lines usually result in RFLPs that can be detected in Southern blots probed with cDNAs encoding parts of the affected genes, it has opened the door to a reverse genetics approach wherein it is possible to identify mutants with specific defects in cloned genes (Wilkerson *et al.*, 1995; Pazour *et al.*, 1998, 1999).

There are eight outer dynein arm LCs. cDNA clones encoding each of these have been isolated via protein sequence, but to date only one LC gene, *FLA14*, encoding LC8 (Pazour *et al.*, 1998), has been disrupted. We were particularly interested in finding a mutation that affected LC2, the homologue of the mouse *Tctex2* protein. In an attempt to identify such a mutant, we screened our entire collection of *Chlamydomonas* insertional mutants by Southern blotting using the LC2 cDNA as a probe. *Chlamydomonas* contains a single copy of the LC2 gene, which is cut once by *Pvu*II (Patel-king *et al.*, 1997). Thus, the LC2 cDNA detects two bands (0.9 and 3.5 kbp) on Southern blots of wild-type genomic DNA cut with this enzyme (Figure 1A).

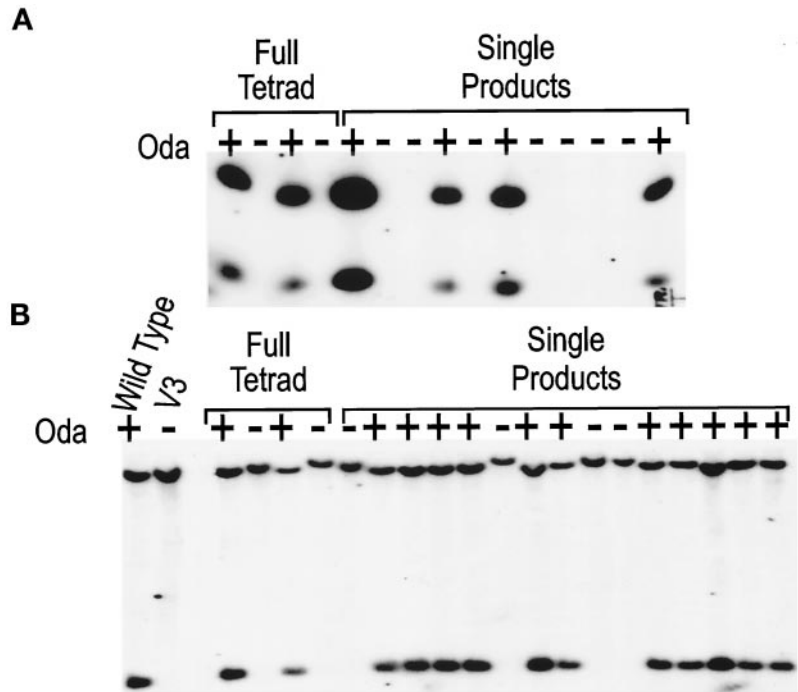
One strain, F56, was missing both hybridizing bands (Figure 1A), indicating that the gene encoding LC2 is completely deleted in this strain. Previously, strain F56 had been briefly reported to contain a mutation that caused complete loss of the outer dynein arm and a slow-swimming phenotype (Koutoulis *et al.*, 1997). This mutant complemented *oda1-oda11*, *pf13*, and *pf22* in stable diploids, indicating that it was defective in a new *ODA* gene, which was termed *ODA12* (Koutoulis *et al.*, 1997; see below). The product of this gene was not identified, because no RFLPs were observed in Southern blots of F56 DNA probed with cDNAs encoding outer arm dynein HCs or ICs (Koutoulis *et al.*, 1997). We similarly did not detect RFLPs in Southern blots of F56 DNA probed with cDNAs encoding ODA-DC polypeptides or LCs other than LC2 (Pazour and Witman, unpublished data). Therefore, F56 does not appear to have a defect in any outer dynein arm-associated protein other than LC2.

Another cell line, V3, was missing the smaller of the two hybridizing bands (Figure 1A). V3 also had a slow-swimming phenotype (see below). To determine which part of the gene is deleted in V3, probes specific to each end of the LC2 cDNA were made by PCR amplification of the LC2 cDNA with T3 and T7 primers, digesting the product with *Pvu*II, and gel-purifying the resulting 0.6- and 0.4-kbp bands. *Pvu*II cuts the LC2 cDNA at only one site, between G614 and C615 in the ~550-bp 3' untranslated region (UTR) (see Patel-King *et al.*, 1997, their Figure 1). Therefore, the 0.6-kbp probe corresponds to the 5' UTR, the entire coding sequence, and



**Figure 1.** Southern blot showing RFLPs in F56 and V3. (A) Genomic DNA was isolated from slow-swimming insertional mutants, cut with *Pvu*II, and analyzed by Southern blotting using the LC2 cDNA as a probe. This probe detects 0.9- and 3.5-kbp bands in most cell lines, including V5 and F55 (both containing a deletion of the *ODA9* gene) and F57 (containing a disruption of an unidentified gene). However, both of these bands are missing in the F56 strain, and the lower band is missing in the V3 strain. (B) A probe (5' End) specific for the 5' UTR and entire coding region of the LC2 gene (see text) hybridizes to the upper band in DNA from both V5 and V3. A probe (3' End) specific for the 3' UTR of the LC2 gene hybridizes to the lower band in DNA from V5 but detects no band in DNA from V3, indicating that the deletion in V3 is at the 3' end of the gene.

a small amount (~60 bp) of the 3' UTR; the 0.4-kbp probe corresponds to the remainder of the 3' UTR. The 5' probe detected the larger band in DNA from V3 cells and cells that were wild-type for LC2 (Figure 1B). The 3' probe detected the smaller band in DNA from cells that were wild-type for LC2 but did not hybridize with any band in DNA from the V3 cells (Figure 1B). This indicates that the 3' end of the gene is deleted in V3. Because the promoter and amino-terminal coding region are retained, these cells have the potential to produce at least a portion of LC2.



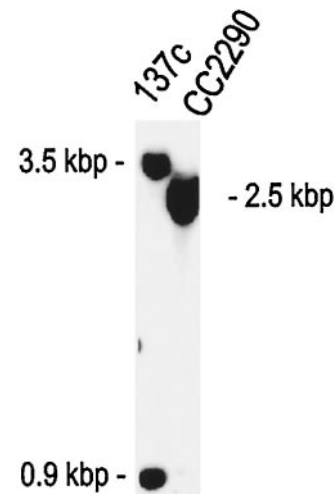
**Figure 2.** The motility defect in the F56 and V3 strains segregates with the defect in the LC2 gene. (A) The initial F56 isolate was crossed to 137c, and a slow-swimming offspring was isolated and crossed again to 137c. Twenty-five tetrads were dissected from this cross and scored for motility. The Oda phenotype segregated 2:2. DNA was isolated from the four products of one full tetrad and a single product of 11 additional tetrads, cut with *Pst*I, and analyzed by Southern blotting using the LC2 cDNA as the probe. In every case, the Oda<sup>-</sup> phenotype segregated with the deletion revealed by the LC2 cDNA, indicating that the motility defect is tightly linked to this deletion mutation. (B) V3 was crossed to H8<sup>-</sup> (Wild Type), and the resultant tetrads were dissected. DNA was isolated from the parental strains, the four products of one tetrad, and a single product of 15 additional tetrads, cut with *Pvu*II, and analyzed by Southern blotting with the LC2 cDNA as the probe. Again, the Oda<sup>-</sup> phenotype segregated with the deletion revealed by the LC2 cDNA.

**The LC2 Locus Is Tightly Linked to ODA12**

To determine whether the slow-swimming phenotype was linked to the disruption of LC2, the F56 and V3 lines were back-crossed to wild-type cells. The swimming defect appears to be caused by a single nuclear mutation as the Oda phenotype segregated 2:2 in 25 tetrads obtained from a back-cross of F56. DNA was isolated from 15 offspring of the F56 cross and 19 offspring of the V3 cross and examined by Southern blotting using the LC2 cDNA as a probe. Figure 2 shows that whenever the LC2 gene was disrupted, the cells had an Oda-swimming phenotype. This strongly suggests that the *ODA12* gene encodes LC2 of the outer dynein arm. The total deletion allele has been designated *oda12-1*; the partial deletion allele has been designated *oda12-2*.

The discovery that the LC2 locus is tightly linked and probably identical to *ODA12* provided an opportunity to obtain independent proof that *ODA12* is a novel gene. CC2290 is a wild-type *C. reinhardtii* isolate that is highly interfertile with 137c-derived lab strains but divergent enough that it is easy to identify RFLPs between the two strains (Gross *et al.*, 1988). We identified an RFLP detected by the LC2 cDNA probe in DNA of CC2290 versus the 137c-derived strains (Figure 3). We then compared the segregation of this RFLP with the segregation of uncloned genes that affect the outer arm in crosses between CC2290 and cell lines (derived from 137c) carrying mutations in the latter genes. Uncloned genes affecting the outer arm include *ODA5*, *ODA7*, *ODA8*, *PF13*, and *PF22* (*ODA1* [Takada *et al.*, 1996] and *ODA10* [Pazour, Koutoulis, and Witman, unpublished data] have been cloned but not yet published). Tetrads from the crosses were dissected, the progeny were scored for motility, and DNA was isolated from one product of 10 different tetrads. The segregation of the LC2 *Pvu*II RFLP was scored by Southern blotting and compared with

the segregation of the motility defect. If the *oda12* mutation is an allele of (or is tightly linked to) one of these genes, all offspring that have motility defects will have the 137c version of the LC2 *Pvu*II RFLP. However, if *oda12* is not an allele of one of these genes, the motility defect will segregate independently from the LC2 *Pvu*II RFLP. As can be seen in Table 2, the LC2 *Pvu*II RFLP segregated independently of



**Figure 3.** LC2 cDNA detects an RFLP between 137c and CC2290 strains. DNA from the lab strain 137c and the wild isolate CC2290 was cut with *Pvu*II and analyzed by Southern blotting using the LC2 cDNA as a probe. This probe detects two bands of ~3.5 and ~0.9 kbp in 137c but only a single band of ~2.5 kbp in CC2290.

**Table 2.** Segregation of the LC2 RFLP

Cross <sup>a</sup>	Results <sup>b</sup>
CC2290 ( <i>mt</i> <sup>-</sup> , <i>ODA5</i> , <i>ODA12</i> <sup>G</sup> ) × CC2236 ( <i>mt</i> <sup>+</sup> , <i>oda5</i> , <i>ODA12</i> <sup>R</sup> )	6P:4NP
CC2290 ( <i>mt</i> <sup>-</sup> , <i>ODA7</i> , <i>ODA12</i> <sup>G</sup> ) × CC2240 ( <i>mt</i> <sup>+</sup> , <i>oda7</i> , <i>ODA12</i> <sup>R</sup> )	4P:6NP
CC2290 ( <i>mt</i> <sup>-</sup> , <i>ODA8</i> , <i>ODA12</i> <sup>G</sup> ) × CC2242 ( <i>mt</i> <sup>+</sup> , <i>oda8</i> , <i>ODA12</i> <sup>R</sup> )	5P:5NP
CC2290 ( <i>mt</i> <sup>-</sup> , <i>PF13</i> , <i>ODA12</i> <sup>G</sup> ) × CC2492 ( <i>mt</i> <sup>+</sup> , <i>pf13a</i> , <i>ODA12</i> <sup>R</sup> )	5P:5NP
CC2290 ( <i>mt</i> <sup>-</sup> , <i>PF22</i> , <i>ODA12</i> <sup>G</sup> ) × CC1382 ( <i>mt</i> <sup>+</sup> , <i>pf22</i> , <i>ODA12</i> <sup>R</sup> )	8P:2NP

<sup>a</sup> Genotypes are shown in parentheses. *ODA12*<sup>G</sup> and *ODA12*<sup>R</sup> are the CC2290 and 137c versions of the *PvuII* RFLP detected by the LC2 cDNA clone.

<sup>b</sup> P, parental; NP, nonparental.

*oda5*, *oda7*, *oda8*, *pf13*, and *pf22*, confirming that *ODA12* is a novel gene.

### Phenotype of *oda12* Cells

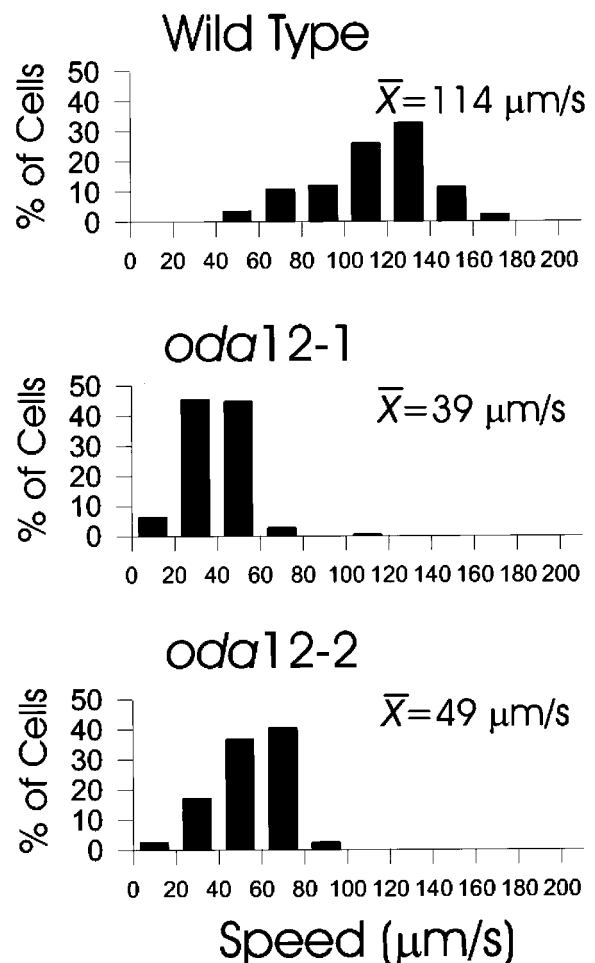
Most of the known defects in *ODA1*–*ODA10* cause loss of the outer dynein arms. As a result, the cells swim in a jerky manner at ~30% of the normal speed. These mutant cells also have an altered photoshock response. During photoshock, which is induced by a flash of bright light, wild-type cells stop swimming, switch to a flagellar waveform, and swim backward for a few milliseconds (Schmidt and Eckert, 1976). In contrast, *oda* mutants stop in response to the flash but do not swim backward (Mitchell and Rosenbaum, 1985).

*oda12-1* cells swim in a typical *oda*-like manner. They are slower than normal and have a jerky appearance as they swim forward. The swimming pattern of *oda12-2* cells is not as slow or jerky as that of *oda12-1* or other *oda* mutant cells. Swimming speeds were quantitatively measured with an ExpertVision Motion Analysis system (Figure 4). The swimming speeds of wild-type (*g1*) cells are broadly distributed with a mean of 114  $\mu\text{m/s}$ . The mean swimming speed of *oda12-1* cells is reduced to 39  $\mu\text{m/s}$ , whereas the speed of *oda12-2* cells is slightly faster at 49  $\mu\text{m/s}$ . Both *oda12-1* and *oda12-2* cells show an altered photoshock response; when flashed with light, they stop briefly and then resume forward swimming without a period of backward swimming.

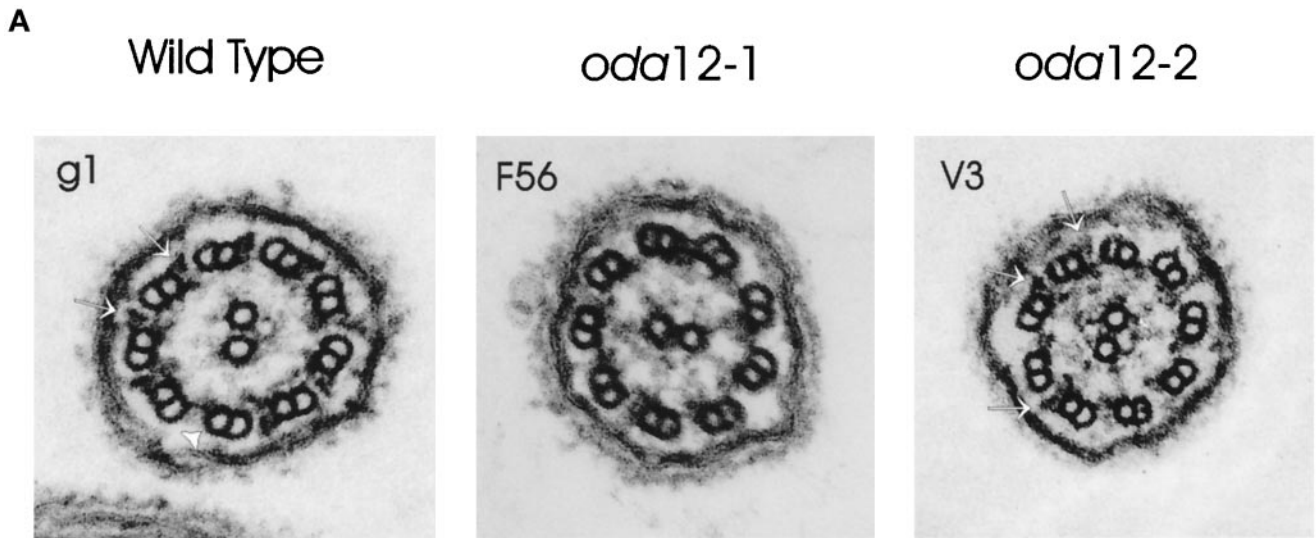
### LC2 Is Required for Assembly of the Outer Dynein Arm

Previously, we briefly reported that the *oda12-1* mutant was lacking the outer dynein arms (Koutoulis *et al.*, 1997), a defect consistent with the swimming phenotype described above. Electron microscopic analysis indicates that whereas *oda12-1* cells lack all of the outer dynein arms, *oda12-2* cells are much more variable (Figure 5A). Some flagellar cross-sections have no outer dynein arms, whereas others have significant numbers. This indicates that the partial deletion does not completely abolish the assembly of outer arms.

Western blot analysis was used to more quantitatively assess the loss of outer dynein arms in *oda12-1* and *oda12-2* cells. Axonemes were isolated from wild-type cells and from each of the mutants. Equal amounts of protein (standardized to tubulin) were separated by SDS-PAGE and transferred to a PVDF membrane. The blot was first probed with an antibody to an inner dynein arm subunit (IC140) that should not



**Figure 4.** Swimming speed of wild-type and *oda12* mutant cells. The Speed Operator of the ExpertVision Motion Analysis system was used to calculate the swimming speed of individual cells. The histograms show the distribution of speeds within each sample. These are plotted as the percentage of cells in each of 10 20- $\mu\text{m/s}$  bins between 0 and 200  $\mu\text{m/s}$ . The mean swimming speed (in micrometers per second) for each sample also is shown. Note that the mean swimming speed of *oda12-2* cells (49  $\mu\text{m/s}$ ) is slightly faster than that of *oda12-1* cells (39  $\mu\text{m/s}$ ). More than 100 cells were analyzed for each cell type.



**Figure 5.** LC2 is required for assembly of outer dynein arms. (A) Electron micrographs of cross-sections of flagella of wild-type g1 cells show prominent outer dynein arms (*arrows*) on all of the doublet microtubules except for doublet one (*arrowhead*), which does not normally have an outer dynein arm (Hoops and Witman, 1983). In contrast, the outer dynein arms are completely missing in flagella of the *oda12-1* mutant (F56). The number of outer dynein arms in flagella of *oda12-2* cells (V3) is variable; in this section outer dynein arms (*arrows*) are seen on only three doublet microtubules. (B) Axonemes from wild-type and the two *oda12* mutants were separated by SDS-PAGE, transferred to a PVDF membrane, and analyzed by Western blotting. The blots were probed with antisera to IC140 (an inner arm IC), IC1 (an outer arm IC), and LC2. The anti-IC140 antisera reacted equivalently with a 140-kDa band in all three lanes, indicating that each lane was loaded with an equal number of axonemes. Neither the anti-LC2 antibody nor the anti-IC1 antibody recognized bands of the appropriate size in the *oda12-1* axonemes, confirming that this mutant is completely lacking the outer dynein arm. However, these two antibodies did reveal a small amount of IC1 and LC2 in the *oda12-2* axonemes. The antibody to IC1 also reacts with a smaller band (\*) (Fowkes and Mitchell, 1998) that is not part of the outer arm and is not affected by the *oda12* mutation. The bottom panel shows a longer exposure of the blot probed with the LC2 antibody to demonstrate the small amount of LC2 in the *oda12-2* axonemes.

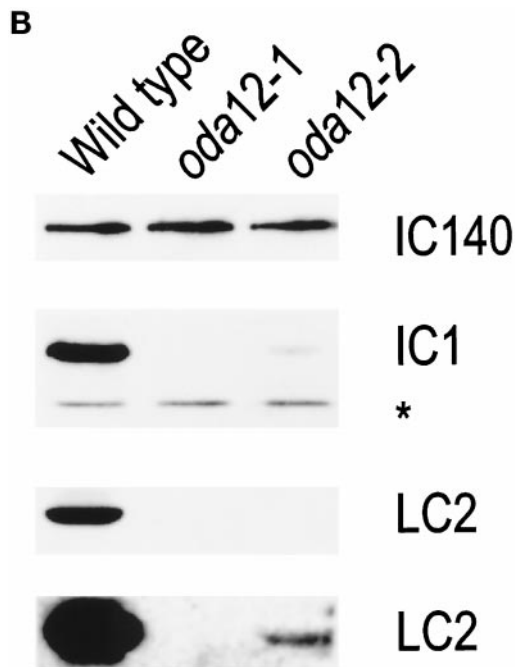


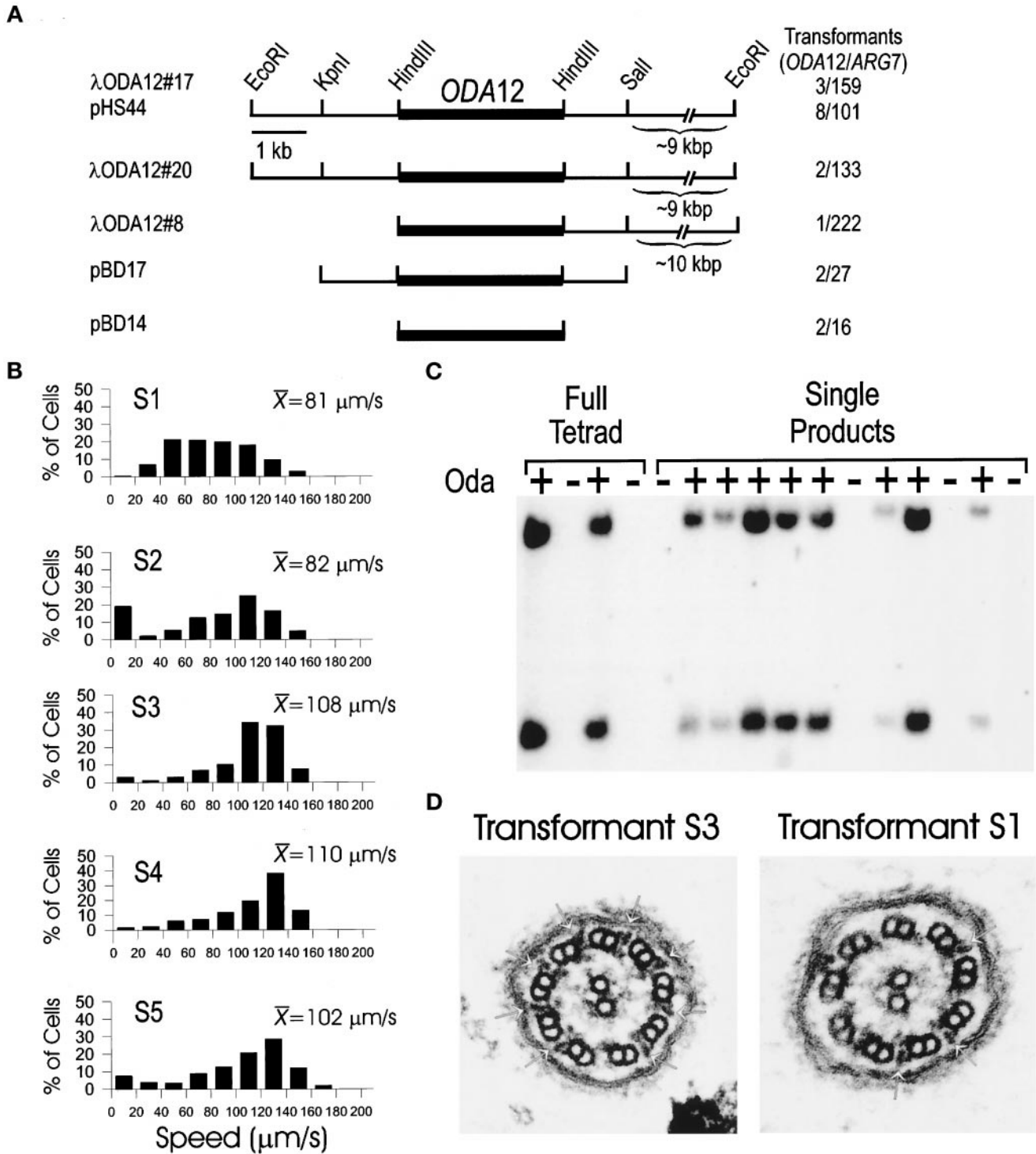
Figure 5. (cont).

be affected by the *oda12* mutations. All three lanes had similar amounts of this antigen, confirming that equal numbers of axonemes had been loaded in each lane on the gel (Figure 5B). The blot was then probed with antibodies to outer dynein arm subunits IC1 and LC2 (Figure 5B). Both proteins were readily detected in axonemes of wild-type cells. In contrast, neither protein was detected in axonemes of *oda12-1* cells, confirming that LC2 and the outer dynein arm is completely missing in this mutant. However, small amounts of IC1 and LC2 were detected in *oda12-2* cells; the *oda12-2* LC2 appeared to migrate with the same relative mobility as the wild-type LC2. Therefore, *oda12-2* cells produce small amounts of apparently full-length LC2. This is sufficient to permit assembly of some outer arms, although the loss of outer arms appears to be more severe than indicated by electron microscopy.

**The *oda12* Phenotype Can Be Rescued by Transformation with DNA Encoding LC2**

To determine whether the *oda12* phenotype is due specifically to loss of LC2, we assayed the ability of the LC2 gene to restore the wild-type phenotype to *oda12* mutant cells. Three genomic clones encoding LC2 were isolated from a  $\lambda$  phage library using the LC2 cDNA clone as a probe. Two of these,  $\lambda$ ODA12#17 and  $\lambda$ ODA12#20, had very similar restriction patterns. The third,  $\lambda$ ODA12#8, was shifted along the chromosome slightly from the first two (Figure 6A). The LC2





**Figure 6.** Rescue of *oda12* by transformation. (A) Map of the *ODA12* locus. Three genomic  $\lambda$  phage clones ( $\lambda$ ODA12#8,  $\lambda$ ODA12#17, and  $\lambda$ ODA12#20) were isolated and mapped. The *EcoRI* sites at the ends of the clones are derived from the vector. The LC2 coding region (dark bar) was determined by hybridization with the cDNA clone. The 16-kbp insert from  $\lambda$ ODA12#17 was cloned into pKS+ and named pHS44. The 5.7-kbp *KpnI-Sall* and 3.1-kbp *HindIII* fragments of pHS44 were subcloned and named pBD17 and pBD14. The number of cell lines in which the *Oda*<sup>-</sup> phenotype was rescued out of the total number of ARG7 transformants screened is shown on the right. (B) Swimming speeds of transformed cell lines. The Speed Operator of the ExpertVision Motion Analysis system was used to calculate the swimming speed of five transformed lines (S1–S5). The histograms show the distribution of speeds within each sample. These are plotted as a percentage of



coding region (as determined by hybridization) is contained completely within a 3.1-kbp *Hind*III fragment common to all three clones (Figure 6A, dark bar). DNA from each of these three  $\lambda$  phage was transformed into the cell line 2567.1 (which carries *oda12-1* and *arg7* mutations), along with DNA containing the *ARG7* gene. Individual *ARG7* transformants were screened by light microscopy to determine whether the *oda12* motility phenotype had been rescued as a result of cotransformation with the phage DNA. All three phage clones were able to rescue the defect (Figure 6A), indicating that each carried the complete *ODA12* gene. The insert from  $\lambda$ ODA12#17 was subcloned into a plasmid vector and named pHS44; as expected, this also was able to rescue the motility defect. The locus was further refined by subcloning the 5.7-kbp *Kpn*I-*Sal*I and the 3.1-kbp *Hind*III fragments, which were termed pBD17 and pBD14, respectively. Both of these fragments complemented the *oda12* defect (Figure 6A), indicating that *ODA12* is located within the 3.1-kbp fragment that also contained the LC2 coding region as determined by hybridization. This data provide very strong evidence that the outer dynein arm defect of *oda12* is the result of the LC2 deletion.

The swimming speed of five independent transformants was measured. All swam faster than the *oda12-1* mutant line and had recovered the ability to swim backward when photoshocked. Transformants S3 (from  $\lambda$ ODA12#20), S4 (from  $\lambda$ ODA12#20), and S5 (from  $\lambda$ ODA12#8) were similar to wild-type in both mean swimming speed and the distribution of swimming speeds (cf. Figures 4 and 6B). Transformant S2 (from  $\lambda$ ODA12#17) was similar to wild-type except for a greater number of very slow cells that reduced its mean speed to 82  $\mu$ m/s (Figure 6B). The swimming speeds of transformant S1 (from  $\lambda$ ODA12#17) were very broadly distributed around a mean of 81  $\mu$ m/s (Figure 6B). The mixed distribution of swimming speeds seen in the S1 and S2 populations was not the result of an impure culture, because the cells were cloned from a single cell before analysis. More likely, it was the result of gene silencing, whereby newly integrated genes in some *Chlamydomonas* cells become transcriptionally inactivated (Cerutti *et al.* 1997).

**Figure 6. (cont).** cells in each of 10 20- $\mu$ m/s bins between 0 and 200  $\mu$ m/s. The mean swimming speed (micrometers per second) for each sample also is shown. More than 100 cells were analyzed for each cell line. (C) Segregation of the exogenous copy of *ODA12*. *oda12-1*, *arg7* strains were transformed with genomic clones of the *ODA12* gene. One transformant (S20) that showed wild-type swimming speeds was mated to an *oda12-1* strain of the opposite mating type, and tetrads were dissected. The offspring were scored for motility, and DNA was isolated from them. The DNA was cut with *Pvu*II and analyzed by Southern blotting using the LC2 cDNA as a probe. The probe hybridizes with two bands in DNA from wild-type cells but does not hybridize with any band in DNA from *oda12-1* cells (see Figure 1). Analysis of one full tetrad and a single product from each of 12 additional tetrads showed that fast-swimming cells (*Oda*+) had the LC2-hybridizing bands, whereas the slow-swimming cells (*Oda*-) were missing these bands. (D) Electron microscopy of flagella of transformed cells. Transformant S3, which swims at a speed similar to that of wild-type (cf. Figure 4 and B), has a full complement of outer dynein arms (left panel, arrows). In contrast, cells of transformed strain S1, which have a wide range of swimming speeds (Figure 6B), have variable numbers of outer dynein arms (right panel, arrows).

To confirm that the rescue of the *Oda*- phenotype was due to integration of the cloned DNA and not suppression of the mutant phenotype, transformant S20 (obtained by transformation of 2507.1 with pHS44), which has wild-type motility, was crossed to an *oda12-1* line and the resultant tetrads dissected. Motility of the offspring was scored, and DNA was isolated and analyzed by Southern blotting using the LC2 cDNA as a probe (Figure 6C). This probe revealed that the two *Pvu*II restriction fragments observed in wild-type cells, but missing in the *oda12-1* line, were restored in the rescued cell lines. Analysis of one full tetrad and single products of 12 additional tetrads showed that whenever the two *Pvu*II bands were present, the cells swam with wild-type speeds. This indicates that restoration of the phenotype is due to the cloned DNA.

Transformants S1 and S3 were examined by electron microscopy to determine whether the outer dynein arms had been restored (Figure 6D). Transformant S3, which had a distribution of swimming speeds similar to that of wild type, had a full complement of outer dynein arms. In contrast, cells of the transformant S1, which had a broader distribution of swimming speed and a lower mean swimming speed, showed a corresponding variability in the restoration of arms. Most of the flagellar cross-sections showed intermediate numbers of arms, but in a few, no arms were present, suggesting that the intermediate swimming speed was due to restoration of only some of the outer dynein arms.

## DISCUSSION

In this report we describe, for the first time, mutations in the *C. reinhardtii* gene encoding LC2, an LC that is specific for the outer dynein arm. Deletion of this gene leads to loss of the outer dynein arm and impaired flagellar motility. The LC2 gene is the *Chlamydomonas* homologue of mouse *Tctex2* (Patel-King *et al.*, 1997), which has been identified as one of the distorter genes of the *t* haplotype (Huw *et al.*, 1995). The finding that LC2 is essential for outer arm assembly supports the hypothesis that some of the phenotypes expressed by *t* haplotypes are due to interactions between defective dynein polypeptides and suggests a specific model by which this might occur.

### Function of LC2

Although mutations are known for each of the HCs and ICs of the *Chlamydomonas* outer dynein arm, previously a mutation has been identified in only one gene (*FLA14*) that encodes an outer arm LC, LC8 (Pazour *et al.*, 1998). However, LC8 also is a component of inner arm dynein, cytoplasmic dynein, and myosin (Espindola *et al.*, 1996; King *et al.*, 1996a; Harrison *et al.*, 1998), and knockout of the LC8 gene has pleiotropic effects that are difficult to interpret in terms of the specific role of LC8 in the outer dynein arm. In contrast, LC2 appears to be specific for the outer arm. Complete deletion of the LC2 gene causes a complete loss of the outer dynein arm, with no other structural changes in the flagellar axoneme. Loss of the outer arms in this mutant causes a decrease in swimming speed to ~34% of that of wild-type cells, a reduction similar to what has been observed for other mutations that cause complete loss of the outer dynein arm (Mitchell and Rosenbaum, 1985; Kamiya, 1988). Loss of the

outer arm also causes loss of the ability to swim backward during the photoshock response, as reported previously for a mutant with a defect in the outer arm (Mitchell and Rosenbaum, 1985).

It is most remarkable that LC2, which has a mass of only 15.8 kDa (King and Patel-King, 1995a), is absolutely essential for assembly of the outer dynein arm, which contains at least 13 different polypeptides and has a total mass of ~2 MDa (Table 1; Witman *et al.*, 1983). Two independent lines of evidence indicate that LC2 is a component of the IC-LC complex (Mitchell and Rosenbaum, 1986; King and Witman, 1990; Witman *et al.*, 1992), which is located at the base of the dynein (King and Witman, 1990). First, LC2 is associated with the  $\beta$  subunit of the outer dynein arm (Pfister and Witman, 1984) and is retained in the *Chlamydomonas* mutant *oda4-s7*, which expresses only the NH<sub>2</sub>-terminal one-third of the  $\beta$  HC (Sakakibara *et al.*, 1993). This portion of the  $\beta$  HC forms the stem and base of the outer arm dynein (Witman *et al.*, 1994) and binds the IC-LC complex (King and Witman, 1989). Second, after dissociation of the outer arm dynein with nonionic detergent, LC2 was immunoprecipitated as part of an aggregate with IC1, IC2, and another LC (Mitchell and Rosenbaum, 1986). Therefore, by virtue of its location in the arm, LC2 is in a position to interact directly with tubulin or the ODA-DC and might be required for binding a preassembled outer dynein arm to the doublet microtubule. Alternatively, LC2 might be required for preassembly of the outer dynein arm in the cytoplasm (Fowkes and Mitchell, 1998), for stability of the preassembled complex, or even for transport of the preassembled complex into the flagellum. Whatever the precise reason, the current findings demonstrate that LC2 has an important role in dynein assembly. It is likely that the LCs of other dyneins have equally important roles in the complexes of which they are a part.

### LC2 is Encoded by ODA12

We previously identified a novel *Chlamydomonas* gene, ODA12, that was necessary for outer arm assembly (Koutoulis *et al.*, 1997); however, the product of this gene was not determined. The following evidence now indicates that ODA12 encodes LC2: 1) Southern hybridization showed that the gene encoding LC2 is completely deleted in the original *oda12* mutant strain; 2) the defining phenotype of *oda12* cells segregated with the LC2 deletion in crosses between *oda12* and wild-type cells; and 3) the *oda12* phenotype was rescued by transformation of *oda12* cells with a small (3.1-kbp) genomic DNA clone containing the LC2 gene. Thus, the phenotype observed for *oda12* cells is due to the deletion of the LC2 gene.

The current findings also confirm that ODA12 is a novel gene, distinct from any of the other ODA or similar genes that have been reported. Previously, we reported that cDNA clones encoding ODA1, ODA2, ODA3, ODA4, ODA6, ODA9, and ODA11 detected no RFLPs in *oda12* versus wild-type strains, and that *oda12* complemented *oda1*, *oda3*, *oda5*, *oda7*, *oda8*, *oda10*, *pf13*, and *pf22* in stable diploids (Koutoulis *et al.*, 1997). Similarly, we determined that cDNA clones encoding the unpublished genes ODA13 and ODA14 (Table 1) did not detect RFLPs in *oda12* versus wild-type strains (Pazour and Witman, unpublished results). We now have used the LC2 cDNA as a physical marker for the ODA12 gene and find that an RFLP, detected by the cDNA in CC2290 versus

137c-derived strains, segregates independently of *oda5*, *oda7*, *oda8*, *pf13*, and *pf22*. These results provide additional evidence that ODA12 cannot be the same as any of those genes.

With the discovery that the ODA12 gene product is an outer dynein arm LC, only four known ODA genes (ODA5, ODA7, ODA8, and ODA10) and two known PF genes (PF13 and PF22) that affect outer arm assembly have yet to have their products identified. It will be of great interest to determine the products of these genes and their roles in outer arm assembly. It may not be coincidental that the products of six ODA or ODA-like genes are still unknown, whereas mutations have not yet been reported for an identical number of outer dynein arm LCs (Table 1). The current findings underscore the possibility that some of these other LCs also could be critical for dynein assembly. The ease with which a reverse genetics approach may be applied to *Chlamydomonas* should greatly facilitate the identification of mutants with defects in these polypeptides.

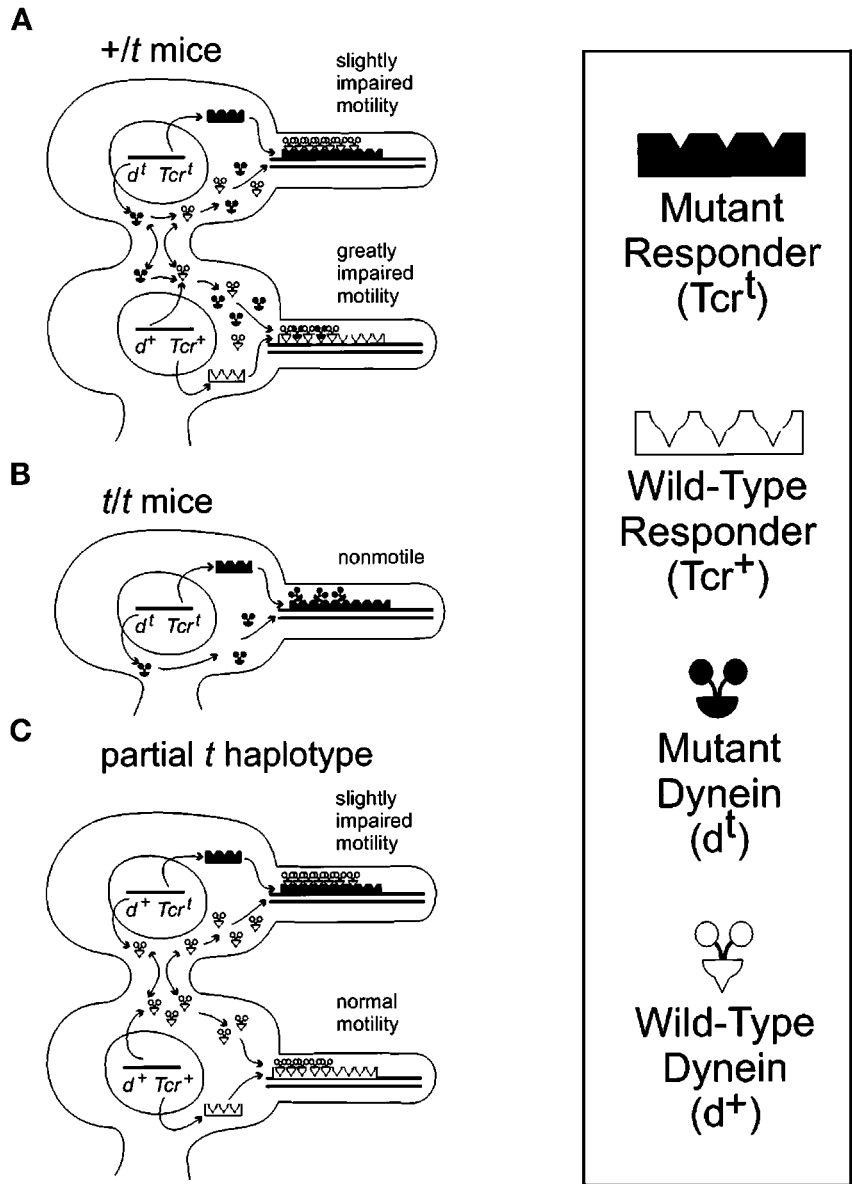
### *oda12-2* Is a Hypomorphic Allele

The results presented here show that the *oda12* mutation originally reported by Koutoulis *et al.* (1997) is a complete deletion of the LC2 gene; this allele has been designated *oda12-1*. Here we also describe a second allele (*oda12-2*) in which only the 3' end of the LC2 gene is deleted. Ultrastructural analysis revealed that the *oda12-2* mutant assembles only a few outer arms on its doublet microtubules (Figure 5A). Presumably because some outer arms are present, *oda12-2* cells swim slightly faster than *oda12-1* cells (Figure 4A). Western blot analysis confirmed that the outer dynein arm polypeptide IC1 is greatly diminished but not entirely missing in axonemes of *oda12-2* (Figure 5B). Interestingly, a small amount of approximately full-length LC2 also is present in the *oda12-2* axoneme. That an apparently full-length product is synthesized suggests that the *oda12-2* deletion removes most or all of the 3' UTR but little if any of the coding sequence. The 3' UTR of eukaryotic mRNAs has several important functions, including control of mRNA stability (Beelman and Parker, 1995; Decker and Parker, 1995; Wickens *et al.*, 1997) and mRNA localization (Wilhelm and Vale, 1993; Decker and Parker, 1995). A defect in either of these functions likely would result in the production of reduced amounts of LC2, which in turn would permit assembly of reduced numbers of outer arms. The incorporation of small amounts of LC2 along with equally small amounts of IC1 into the *oda12-2* axonemes is consistent with LC2 being absolutely essential for outer dynein arm assembly.

### Dynein Defects and *t* Haplotype Phenotypes

The mouse *t* haplotype is an ~30-Mb region of chromosome 17 containing numerous genes and defined by the presence of four inversions relative to the wild-type homologue, so that recombination is suppressed and the entire region usually segregates as a single unit (Olds-Clarke and Johnson, 1993; Silver, 1993). One of the most intriguing phenotypes of the *t* haplotype is that heterozygous *+/t* males transmit the *t* haplotype-bearing version of chromosome 17 to >95% of their progeny. Analysis of partial *t* haplotypes resulting from rare recombination events within the *t* complex indicate that this transmission ratio distortion, or meiotic drive,

**Figure 7.** Model for mouse *t* phenotypes based on dynein–axoneme interactions. In all cases, the distorter gene (*d*) products, which are dynein subunits, are free to diffuse (arrows) through the intercellular bridges that connect developing spermatids. However, the responder gene (*Tcr*) product quickly assembles onto the axoneme and thus remains associated with the nucleus that encoded it. Wild-type and *t*-encoded proteins are indicated by open and filled symbols, respectively. *t*-encoded dyneins contain mutations that affect their assembly and/or function; the *t*-encoded responder contains mutations that affect its ability to bind *t*-encoded dyneins. (A) In developing spermatids of heterozygous *+/t* mice, the mutated *t* responder binds only wild-type dyneins, preventing incorporation of mutant dyneins into the axoneme associated with the nucleus carrying the *t* haplotype. In contrast, the wild-type responder binds both wild-type and mutant dyneins; the mutant dyneins “poison” the axoneme into which they are incorporated. As a result, the sperm bearing the *t* haplotype has slightly impaired motility (because of the presence of the mutant responder), but the sperm with the wild-type homologue has greatly impaired motility. The sperm bearing the *t* haplotype is much more likely to reach and fertilize an egg, thus leading to transmission ratio distortion. (B) In spermatids of homozygous *t/t* mice, all dyneins produced are defective and bind poorly to the *t*-encoded responder. The resulting sperm are nonmotile, and the mice are sterile. (In this case, all spermatids are identical, so only one is shown.) (C) In mice containing a partial *t* haplotype with a *t*-encoded responder, but no *t*-encoded distorters, only wild-type dyneins are produced and assembled into the axonemes. Sperm carrying *Tcr<sup>t</sup>* and sperm carrying *Tcr<sup>+</sup>* are both motile, although the former will suffer a competitive disadvantage because of the presence of the *t*-encoded responder in their axonemes.



is the result of two or three distorter genes, located in different parts of the *t* haplotype, acting on a single responder gene, termed *Tcr* (*t* complex responder) (Lyon, 1984). The distorter genes can act *cis* or *trans* on the responder gene, and their effects are additive. The result of these interactions is to increase the probability of transmission of the chromosome carrying the *t* haplotype responder gene.

The discovery that some of the candidate distorter genes encode dynein LCs has prompted a model that explains the *t* haplotype phenotype on the basis of interactions between dyneins and other axonemal components (Patel-King *et al.*, 1997; Harrison *et al.*, 1998). The current finding that LC2 is important for dynein assembly permits the model to be described in more specific terms (Figure 7). In this model,

the responder gene encodes a protein (*Tcr*) that is expressed in the haploid nucleus and remains associated with that nucleus throughout the remainder of spermiogenesis. Because soluble components can diffuse through the intercellular bridges that connect developing spermatids, this protein must become rapidly associated with some structural component of the spermatid, such as the basal body or the elongating axoneme, to prevent its diffusion to neighboring spermatids. Ultimately, *Tcr* must interact with the dynein arms. For the sake of simplicity, we will assume that *Tcr* is part of an axonemal component such as the ODA-DC (Takada and Kamiya, 1994; Koutoulis *et al.*, 1997) or the dynein regulatory complex (Gardner *et al.*, 1994; Piperno *et al.*, 1994) that interacts directly with the dynein arms, but it could interact with the arms indirectly, as through a basal



body-associated templating activity that determines the location of the outer dynein arm binding sites on the doublet microtubule. In contrast, the distorter proteins, which include subunits of the inner and outer dynein arms, diffuse through the intercellular bridges, so that both wild-type and mutant (*t* haplotype-encoded) dyneins are preassembled in the cytoplasm of both spermatids bearing the wild-type responder ( $\text{Tcr}^+$ ) and spermatids bearing the *t* haplotype-encoded responder ( $\text{Tcr}^t$ ).

The model predicts that  $\text{Tcr}^t$  binds wild-type dynein strongly but mutant dynein less efficiently. In  $+/t$  mice (Figure 7A), both types of dyneins will be present in the cytoplasm of the developing spermatid. The wild-type dyneins will out-compete the mutant dyneins for binding sites on the  $\text{Tcr}^t$ -containing axoneme, with the result that these axonemes will assemble a nearly normal complement of arms and have motility that is only slightly impaired because of the presence of  $\text{Tcr}^t$  (see below). In contrast, the model predicts that  $\text{Tcr}^+$  binds both wild-type and mutant dyneins equally, with the result that both types of dyneins will be assembled into the  $\text{Tcr}^+$ -containing axonemes. Because of the presence of many mutant dyneins in these latter axonemes, the resulting sperm will be much less efficient than those containing  $\text{Tcr}^t$  in some critical aspect of motility, resulting in transmission ratio distortion.

A second phenotype of the *t* haplotype that is readily accounted for by this model is that *t/t* males are sterile (Figure 7B). *t/t* males will produce only mutant dynein, which has a low affinity for  $\text{Tcr}^t$ . As a result, few arms will be assembled into the axoneme, and if they are assembled they will be defective. The resulting sperm will have aberrant or no motility and be unable to fertilize an egg.

In an analysis of partial *t* haplotypes, it was observed that if a *t*-encoded responder was present on one chromosome, with no *t*-encoded distorters acting on it *cis* or *trans*, then that chromosome was transmitted at a low ratio (11–17%) (Lyon, 1984). This suggests that the mutant responder itself impairs the motility of  $\text{Tcr}^t$ -bearing sperm. This also is compatible with our model (Figure 7C). In spermatids of such mice, only wild-type dynein is present, and it binds to both  $\text{Tcr}^t$ - and  $\text{Tcr}^+$ -containing axonemes. The resulting  $\text{Tcr}^t$ -containing sperm will have slightly impaired motility as a result of having  $\text{Tcr}^t$  in their axonemes. This motility will not be so compromised that the sperm are unable to fertilize an egg and not as defective as that of  $\text{Tcr}^+$ -containing spermatids with a mixture of mutant and wild-type dyneins (see Figure 7A). Nevertheless, they will have a competitive disadvantage, compared with  $\text{Tcr}^+$ -containing sperm with only wild-type dyneins, in reaching and fertilizing the egg.

The sperm motility phenotypes predicted by this model are in good agreement with observations of sperm from  $+/t$  and *t/t* mice (summarized by Harrison *et al.*, 1998). For example, sperm from *t/t* mice rarely exhibit a regular beat pattern and have little progressive motility, whereas the mean swimming speed of sperm from  $+/t$  mice is intermediate between that of *t/t* and  $+/+$  mice (Olds-Clarke and Johnson, 1993). Moreover, sperm from  $+/t$  mice separate into two subpopulations, one having nearly normal motility and the other having abnormal motility (Olds-Clarke and Johnson, 1993); the former may correspond to  $\text{Tcr}^t$ -containing sperm, and the latter may correspond to  $\text{Tcr}^+$ -containing sperm. Certainly these motility defects could be accounted

for by defects in dynein arm assembly and/or function. As indicated by our analysis of the *oda12-2* mutant compared with *oda12-1* and wild-type cells, intermediate levels of outer dynein arms can result in intermediate swimming speeds. Furthermore, *Chlamydomonas* cells with defects in both the inner and outer arms have a more severe phenotype than those with a defect in either arm alone (Kamiya *et al.*, 1989), which is consistent with the additive effects of the distorter genes in mice (Lyon, 1984). Finally, at least some of the motility defects observed in sperm of  $+/t$  mice are dependent on  $\text{Ca}^{2+}$  (Olds-Clarke and Johnson, 1993), and both inner and outer dynein arms are involved in  $\text{Ca}^{2+}$ -mediated changes in flagellar waveform. For example, in *Chlamydomonas*, the inner arms are involved in phototactic steering (King and Dutcher, 1997), and mutants with defects in the outer arm are defective in backward swimming during photo-shock (Mitchell and Rosenbaum, 1985; this report); both of these responses are mediated by  $\text{Ca}^{2+}$ .

### Conclusion

The above model should be readily testable by further molecular genetic and biochemical studies of *t* haplotype-bearing mice. Of particular importance will be identification of the products of the *Tcr* gene and of the remaining distorter genes. In any case, the findings presented here demonstrate for the first time that a defect in a dynein LC can have a profound effect on outer arm assembly. It is likely that the LCs have equally important roles in other dyneins. Because *oda12-1* is a null mutant, it should now be possible to investigate LC function by *in vitro* mutagenesis of the *ODA12* gene, followed by transformation of the modified gene into the *oda12-1* mutant, where the modified gene product should be assembled into an outer dynein arm. The effects of the LC modification on flagellar movement and dynein activity *in vitro* could then be determined.

### ACKNOWLEDGMENTS

We thank Dr. J. Aghajanian (Worcester Foundation for Biomedical Research, Shrewsbury, MA) for the electron microscopy presented in this study and Drs. P. Yang and W. Sale (Emory University, Atlanta, GA) for the gift of the anti-IC140 antibody. These studies were supported by grants from the National Institutes of Health (GM30626 to G.B.W. and GM51293 to S.M.K.) and the Campbell and Hall Charity Fund (to G.B.W.).

### REFERENCES

- Beelman, C.A., and Parker, R. (1995). Degradation of mRNA in eukaryotes. *Cell* 81, 179–183.
- Benashski, S.E., Patel-King, R.S., and King, S.M. (1999). Light chain 1 from the *Chlamydomonas* outer dynein arm is a leucine-rich repeat protein associated with the motor domain of the gamma heavy chain. *Biochemistry* 38, 7253–7264.
- Bowman, A.B., Patel-King, R.S., Benashski, S.E., McCaffery, M., Goldstein, L.S.B., and King, S.M. (1999). *Drosophila* roadblock and *Chlamydomonas* LC7: a conserved family of dynein-associated proteins involved in axonal transport, flagellar motility and mitosis. *J. Cell Biol.* 146, 165–180.
- Casey, D.M., Pazour, G.J., Wilkerson, C.G., Inaba, K., Koutoulis, A., Takada, S., Kamiya, R., and Witman, G.B. (1998). Identification and insertional mutagenesis of a new *Chlamydomonas reinhardtii* gene,



- oda 14, that encodes the 25-kd subunit of the outer dynein arm docking complex. *Mol. Biol. Cell* 9, 155a.
- Cerutti, H., Johnson, A.M., Gillham, N.W., and Boynton, J.E. (1997). A eubacterial gene conferring spectinomycin resistance on *Chlamydomonas reinhardtii*: integration into the nuclear genome and gene expression. *Genetics* 145, 97–110.
- Debuchy, R., Purton, S., and Rochaix, J.-D. (1989). The arginosuccinate lyase gene of *Chlamydomonas reinhardtii*: an important tool for nuclear transformation and for correlating the genetic and molecular maps of the ARG7 locus. *EMBO J.* 8, 2803–2809.
- Decker, C.J., and Parker, R. (1995). Diversity of cytoplasmic functions for the 3' untranslated region of eukaryotic transcripts. *Curr. Opin. Cell Biol.* 7, 386–392.
- Espindola, F.S., Cheney, R.E., King, S.M., Suter, D.M., and Mooseker, M.S. (1996). Myosin-V and dynein share a similar light chain. *Mol. Biol. Cell* 7, 372a.
- Ewulonu, U.K., Schimenti, K., Kuemerle, B., Magnuson, T., and Schimenti, J. (1996). Targetted mutagenesis of a candidate *t* complex responder gene in Mouse *t* haplotypes does not eliminate transmission ratio distortion. *Genetics* 144, 785–792.
- Fernandez, E., Schnell, R., Ranum, L.P.W., Hussey, S.C., Silflow, C.D., and Lefebvre, P.A. (1989). Isolation and characterization of the nitrate reductase structural gene of *Chlamydomonas reinhardtii*. *Proc. Natl. Acad. Sci. USA* 86, 6449–6453.
- Fowkes, M.E., and Mitchell, D.R. (1998). The role of preassembled cytoplasmic complexes in assembly of flagellar dynein subunits. *Mol. Biol. Cell* 9, 2337–2347.
- Gardner, L.C., O'Toole, E., Perrone, C.A., Giddings, T., and Porter, M.E. (1994). Components of a "dynein regulatory complex" are located at the junction between the radial spokes and the dynein arms in *Chlamydomonas* flagella. *J. Cell Biol.* 127, 1311–1325.
- Gross, C.H., Ranum, L.P.W., and Lefebvre, P.A. (1988). Extensive restriction fragment length polymorphisms in a new isolate of *Chlamydomonas reinhardtii*. *Curr. Genet.* 13, 503–508.
- Harris, E.H. (1989). *The Chlamydomonas Sourcebook*, San Diego: Academic Press.
- Harrison, A., Olds-Clarke, P., and King, S.M. (1998). Identification of the *t* complex-encoded cytoplasmic dynein light chain Tctex1 in inner arm II supports the involvement of flagellar dynein in meiotic drive. *J. Cell Biol.* 140, 1137–1147.
- Holzbaun, E.L.F., and Vallee, R.B. (1994). DYNEINS: molecular structure and cellular function. *Annu. Rev. Cell Biol.* 10, 339–372.
- Hoops, H.J., and Witman, G.B. (1983). Outer doublet heterogeneity reveals structural polarity related to beat direction in *Chlamydomonas* flagella. *J. Cell Biol.* 97, 902–908.
- Huang, B., Piperno, G., and Luck, D.J.L. (1979). Paralyzed flagella mutants of *Chlamydomonas reinhardtii* defective for axonemal doublet microtubule arms. *J. Biol. Chem.* 254, 3091–3099.
- Huw, L.-Y., Goldsborough, A.S., Willison, K., and Artzt, K. (1995). Tctex2: a sperm tail surface protein mapping to the *t*-complex. *Dev. Biol.* 170, 183–194.
- Kamiya, R. (1988). Mutations at twelve independent loci result in absence of outer dynein arms in *Chlamydomonas reinhardtii*. *J. Cell Biol.* 107, 2253–2258.
- Kamiya, R., Kurimoto, E., Sakakibara, H., and Okagaki, T. (1989). A genetic approach to the function of inner and outer arm dynein. In: *Cell Movement*, vol. I: The Dynein ATPases, ed. F.D. Warner, P. Satir, and L.R. Gibbons, New York: Alan R. Liss, 209–218.
- Kindle, K.L. (1990). High-frequency nuclear transformation of *Chlamydomonas reinhardtii*. *Proc. Natl. Acad. Sci. USA* 87, 1228–1232.
- King, S.J., and Dutcher, S.K. (1997). Phosphoregulation of an inner dynein arm complex in *Chlamydomonas reinhardtii* is altered in phototactic mutant strains. *J. Cell Biol.* 136, 177–191.
- King, S.M., Barbarese, E., Dillman, J.F., III, Patel-King, R.S., Carson, J.H., and Pfister, K.K. (1996a). Brain cytoplasmic and flagellar outer arm dyneins share a highly conserved  $M_r$  8,000 light chain. *J. Biol. Chem.* 271, 19358–19366.
- King, S.M., Dillman, J.F., III, Benashski, S.E., Lye, R.J., Patel-King, R.S., and Pfister, K.K. (1996b). The mouse *t*-complex-encoded protein Tctex-1 is a light chain of brain cytoplasmic dynein. *J. Biol. Chem.* 271, 32281–32287.
- King, S.M., Otter, T., and Witman, G.B. (1985). Characterization of monoclonal antibodies against *Chlamydomonas* flagellar dyneins by high-resolution protein blotting. *Proc. Natl. Acad. Sci. USA* 82, 4717–4721.
- King, S.M., Otter, T., and Witman, G.B. (1986). Purification and characterization of *Chlamydomonas* flagellar dyneins. *Methods Enzymol.* 134, 291–306.
- King, S.M., and Patel-King, R.S. (1995a). Identification of a  $Ca^{2+}$ -binding light chain within *Chlamydomonas* outer arm dynein. *J. Cell Sci.* 108, 3757–3764.
- King, S.M., and Patel-King, R.S. (1995b). The  $M_r$  = 8,000 and 11,000 outer arm dynein light chains from *Chlamydomonas* flagella have cytoplasmic homologues. *J. Biol. Chem.* 270, 11445–11452.
- King, S.M., Patel-King, R.S., Wilkerson, C.G., and Witman, G.B. (1995). The 78,000- $M_r$  intermediate chain of *Chlamydomonas* outer arm dynein is a microtubule-binding protein. *J. Cell Biol.* 131, 399–409.
- King, S.M., and Witman, G.B. (1989). Molecular structure of *Chlamydomonas* outer arm dynein. In: *Cell Movement*, vol. I: The Dynein ATPases, ed. F.D. Warner, P. Satir, and L.R. Gibbons, New York: Alan R. Liss, 61–75.
- King, S.M., and Witman, G.B. (1990). Localization of an intermediate chain of outer arm dynein by immunoelectron microscopy. *J. Biol. Chem.* 265, 19807–19811.
- Koutoulis, A., Pazour, G.J., Wilkerson, C.G., Inaba, K., Sheng, H., Takada, S., and Witman, G.B. (1997). The *Chlamydomonas reinhardtii* ODA3 gene encodes a protein of the outer dynein arm docking complex. *J. Cell Biol.* 137, 1069–1080.
- Lader, E., Ha, H.-S., O'Neill, M., Artzt, K., and Bennett, D. (1989). *tctex-1*: a candidate gene family for a mouse *t* complex sterility locus. *Cell* 58, 969–979.
- Levine, R.P., and Ebersold, W.T. (1960). The genetics and cytology of *Chlamydomonas*. *Annu. Rev. Microbiol.* 14, 197–216.
- Lyon, M. (1984). Transmission ratio distortion in mouse *t*-haplotypes is due to multiple distorter genes acting on a responder locus. *Cell* 37, 621–628.
- Mitchell, D.R., and Brown, K.S. (1994). Sequence analysis of the *Chlamydomonas* alpha and beta dynein heavy chain genes. *J. Cell Sci.* 107, 635–644.
- Mitchell, D.R., and Brown, K.S. (1997). Sequence analysis of the *Chlamydomonas reinhardtii* flagellar  $\alpha$  dynein gene. *Cell Motil. Cytoskeleton* 37, 120–126.
- Mitchell, D.R., and Kang, Y. (1993). Reversion analysis of dynein intermediate chain function. *J. Cell Sci.* 105, 1069–1078.
- Mitchell, D.R., and Rosenbaum, J.L. (1985). A motile *Chlamydomonas* flagellar mutant that lacks outer dynein arms. *J. Cell Biol.* 100, 1228–1234.
- Mitchell, D.R., and Rosenbaum, J.L. (1986). Protein-protein interactions in the 18S ATPase of *Chlamydomonas* outer dynein arms. *Cell Motil Cytoskeleton* 6, 510–520.

- Moss, A.G., Pazour, G.J., and Witman, G.B. (1995). Assay of *Chlamydomonas* phototaxis. *Methods Cell Biol.* 47, 281–287.
- Olds-Clarke, P., and Johnson, L.R. (1993). *t* haplotypes in the mouse compromise sperm flagellar function. *Dev. Biol.* 155, 14–25.
- Otter, T., King, S.M., and Witman, G.B. (1987). A two-step procedure for efficient electrotransfer of both high-molecular (>400,000) and low-molecular-weight (<20,000) proteins. *Anal. Biochem.* 162, 370–377.
- Patel-King, R.S., Benashski, S.E., Harrison, A., and King, S.M. (1996). Two functional thioredoxins containing redox-sensitive vicinal dithiols from the *Chlamydomonas* outer dynein arm. *J. Biol. Chem.* 271, 6283–6291.
- Patel-King, R.S., Benashski, S.E., Harrison, A., and King, S.M. (1997). A *Chlamydomonas* homologue of the putative murine *t*-complex distorter Tctex-2 is an outer arm dynein light chain. *J. Cell Biol.* 137, 1081–1090.
- Pazour, G.J., Dickert, B.L., and Witman, G.B. (1999). The DHC1b (DHC2) isoform of cytoplasmic dynein is required for flagellar assembly. *J. Cell Biol.* 144, 473–481.
- Pazour, G.J., Sineshchekov, O.A., and Witman, G.B. (1995). Mutational analysis of the phototransduction pathway of *Chlamydomonas reinhardtii*. *J. Cell Biol.* 131, 427–440.
- Pazour, G.J., Wilkerson, C.G., and Witman, G.B. (1998). A dynein light chain is essential for the retrograde particle movement of intraflagellar transport (IFT). *J. Cell Biol.* 141, 979–992.
- Pfister, K.K., and Witman, G.B. (1984). Subfractionation of *Chlamydomonas* 18 S dynein into two unique subunits containing ATPase activity. *J. Biol. Chem.* 259, 12072–12080.
- Piperno, G., Mead, K., LeDizet, M., and Moscatelli, A. (1994). Mutations in the “dynein regulatory complex” alter the ATP-insensitive binding sites for inner arm dyneins in *Chlamydomonas* axonemes. *J. Cell Biol.* 125, 1109–1117.
- Rosenbaum, J.L., Cole, D.G., and Diener, D.R. (1999). Intraflagellar transport: the eyes have it. *J. Cell Biol.* 144, 385–388.
- Sager, R., and Granick, S. (1953). Nutritional studies with *Chlamydomonas reinhardtii*. *Ann. NY Acad. Sci.* 56, 831–838.
- Sakakibara, H., Mitchell, D.R., and Kamiya, R. (1991). A *Chlamydomonas* outer arm dynein mutant missing the  $\alpha$  heavy chain. *J. Cell Biol.* 113, 615–622.
- Sakakibara, H., Takada, S., King, S.M., Witman, G.B., and Kamiya, R. (1993). A *Chlamydomonas* outer arm dynein mutant with a truncated  $\beta$  heavy chain. *J. Cell Biol.* 122, 653–661.
- Sambrook, J., Fritsch, E.F., and Maniatis, T. (1987). *Molecular Cloning: A Laboratory Manual*, Cold Spring Harbor, NY: Cold Spring Harbor Laboratory Press.
- Schmidt, J.A., and Eckert, R. (1976). Calcium couples flagellar reversal to photostimulation in *Chlamydomonas reinhardtii*. *Nature* 262, 713–715.
- Silver, L.M. (1985). Mouse *t* haplotypes. *Annu. Rev. Genet.* 19, 179–208.
- Silver, L.M. (1993). The peculiar journey of a selfish chromosome: mouse *t* haplotypes and meiotic drive. *Trends Genet.* 9, 250–254.
- Takada, S., and Kamiya, R. (1994). Functional reconstitution of *Chlamydomonas* outer dynein arms from  $\alpha$ - $\beta$  and  $\gamma$  subunits: requirement of a third factor. *J. Cell Biol.* 126, 737–745.
- Takada, S., Wilkerson, C.G., Kamiya, R., and Witman, G.B. (1996). The *ODA1* gene encodes a 62-kDa component of a complex necessary for outer arm dynein docking on the doublet microtubules of *Chlamydomonas* flagella. *Mol. Biol. Cell* 7, 568a.
- Tam, L.-W., and Lefebvre, P.A. (1993). Cloning of flagellar genes in *Chlamydomonas reinhardtii* by DNA insertional mutagenesis. *Genetics* 135, 375–384.
- Vaughan, K.T., *et al.* (1996). Multiple mouse chromosomal loci for dynein-based motility. *Genomics* 36, 29–38.
- Wickens, M., Anderson, P., and Jackson, R. J. (1997). Life and death in the cytoplasm: messages from the 3' end. *Curr. Opin. Genet. Dev.* 7, 220–232.
- Wilhelm, J.E., and Vale, R.D. (1993). RNA on the move: the mRNA localization pathway. *J. Cell Biol.* 123, 269–274.
- Wilkerson, C.G., King, S.M., Koutoulis, A., Pazour, G.J., and Witman, G.B. (1995). The 78,000  $M_r$  intermediate chain of *Chlamydomonas* outer arm dynein is a WD-repeat protein required for arm assembly. *J. Cell Biol.* 129, 169–178.
- Wilkerson, C.G., King, S.M., and Witman, G.B. (1994). Molecular analysis of the  $\gamma$  heavy chain of *Chlamydomonas* flagellar outer-arm dynein. *J. Cell Sci.* 107, 497–506.
- Witman, G.B. (1986). Isolation of *Chlamydomonas* flagella and flagellar axonemes. *Methods Enzymol.* 134, 280–290.
- Witman, G.B., Johnson, K.A., Pfister, K.K., and Wall, J.S. (1983). Fine structure and molecular weight of the outer arm dyneins of *Chlamydomonas*. *J. Submicrosc. Cytol.* 15, 193–197.
- Witman, G.B., King, S.M., Moss, A.G., and Wilkerson, C. (1992). The intermediate chain/light chain complex: an important structural entity of outer arm dynein. In: *Comparative Spermatology 20 Years After*, ed. B. Baccetti, New York: Raven Press, 439–443.
- Witman, G.B., Wilkerson, C.G., and King, S.M. (1994). The biochemistry, genetics, and molecular biology of flagellar dynein. In: *Microtubules*, ed. J.S. Hyams and C.W. Lloyd, New York: Wiley-Liss, 229–249.
- Yang, P., and Sale, W.S. (1998). The  $M_r$  140,000 intermediate chain of *Chlamydomonas* flagellar inner arm dynein is a WD-repeat protein implicated in dynein arm anchoring. *Mol. Biol. Cell* 9, 3335–3349.