

Review Article

Ecological Therapy for Cancer: Defining Tumors Using an Ecosystem Paradigm Suggests New Opportunities for Novel Cancer Treatments¹

Kenneth J. Pienta*, Natalie McGregor*, Robert Axelrod[†] and David E. Axelrod[‡]

*Departments of Internal Medicine and Urology, University of Michigan Comprehensive Cancer Center, Ann Arbor, MI 48109, USA; [†]Gerald R. Ford School Public Policy and Department of Political Science, University of Michigan, Ann Arbor, MI 48109, USA; [‡]Department of Genetics and Cancer Institute of New Jersey, Rutgers – The State University of New Jersey, Piscataway, NJ 08854, USA

Abstract

We propose that there is an opportunity to devise new cancer therapies based on the recognition that tumors have properties of ecological systems. Traditionally, localized treatment has targeted the cancer cells directly by removing them (surgery) or killing them (chemotherapy and radiation). These modes of therapy have not always been effective because many tumors recur after these therapies, either because not all of the cells are killed (local recurrence) or because the cancer cells had already escaped the primary tumor environment (distant recurrence). There has been an increasing recognition that the tumor microenvironment contains host noncancer cells in addition to cancer cells, interacting in a dynamic fashion over time. The cancer cells compete and/or cooperate with nontumor cells, and the cancer cells may compete and/or cooperate with each other. It has been demonstrated that these interactions can alter the genotype and phenotype of the host cells as well as the cancer cells. The interaction of these cancer and host cells to remodel the normal host organ microenvironment may best be conceptualized as an evolving ecosystem. In classic terms, an ecosystem describes the physical and biological components of an environment in relation to each other as a unit. Here, we review some properties of tumor microenvironments and ecological systems and indicate similarities between them. We propose that describing tumors as ecological systems defines new opportunities for novel cancer therapies and use the development of prostate cancer metastases as an example. We refer to this as “ecological therapy” for cancer.

Translational Oncology (2008) 1, 158–164

Tumors as Ecological Systems

Since the work of Cairns and Nowell in the 1970s, cancer has been described as a process that can be understood in terms of darwinian evolution [1–4]. Tumor cell heterogeneity is the result of competition between various clones of cancer cells that act as competing species for resources in the tumor microenvironment [2–6]. It is generally accepted that cancers evolve by darwinian principles (Figure 1) [5–9]. These principles include clonal proliferation, mutational and epigenetic changes within the clonal population resulting in genetic diversity, and selection pressures such as lack of nutrients leading to proliferation of subclones [5–9]. This knowledge, however, has not resulted in changes in treatment paradigms for cancer therapy. Placing cancer cell clonal evolution within the context of its environment provides a novel paradigm that can lead to new therapeutic interventions.

Cancer has been considered as an emergent property of a complex adaptive system [10–12]. Similarly, the emergent property of a classic

ecosystem is the collective behavior of its constituent parts. In the 1930s, the term *ecosystem* was coined by Clapham and then popularized and put into print by Tansley to describe the physical and biological components of an environment considered in relation to each

Address all correspondence to: Kenneth J. Pienta, MD, 7308 CCC, 1500 E. Medical Center Drive, Ann Arbor, MI 48109. E-mail: kpienta@umich.edu

¹K.J. Pienta is supported by a National Institutes of Health (NIH) grant CA093900, an American Cancer Society Clinical Research Professorship, NIH Specialized Program of Research Excellence (SPORE) in prostate cancer grant P50 CA69568, Cancer Center support grant P30 CA 46592, SouthWest Oncology Group grant CA32102, the Prostate Cancer Foundation, a Ralph Wilson Medical Research Foundation grant, and a Wallace H. Coulter Foundation Translational Partners Seed grant. R. Axelrod is supported by the University of Michigan's LS&A Enrichment Fund. D.E. Axelrod is supported by NIH grant CA113004.

Received 21 August 2008; Revised 16 September 2008; Accepted 18 September 2008

Copyright © 2008 Neoplasia Press, Inc. All rights reserved 1944-7124/08/\$25.00
DOI 10.1593/tlo.08178

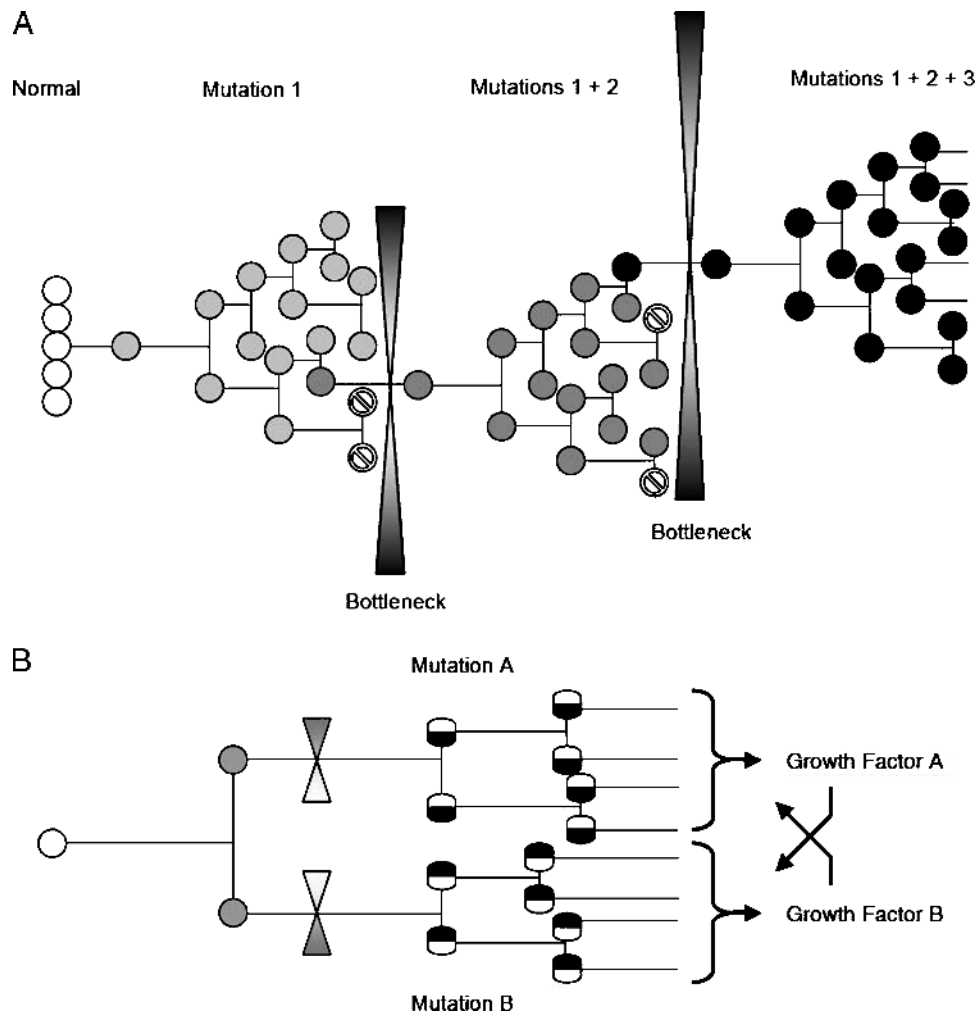


Figure 1. Darwinian evolution and cancer. Cancers evolve by darwinian principles that include clonal proliferation, mutational changes within the clonal population resulting in genetic diversity, and selection pressures leading to proliferation of subclones that bridge bottlenecks such as lack of nutrients and space limitations. (A) In the traditional view of tumor progression, there is competition between genetically unstable, partially transformed, proliferating cells. The cells compete for limited oxygen, essential nutrients, and growth factors, and therefore, many die. Eventually, one cell accumulates sufficient mutations to express all of the functions required for a clone of fully malignant cells to emerge as a successful species occupying an environmental niche. This founder cell can be the result of selective pressures as indicated by the bottlenecks or the result of intrinsic genetic instability leading to a full complement of mutations that are required for full malignant potential. The bottlenecks indicate where a new dominant cell type becomes apparent. (B) In addition, we have hypothesized a tumor progression model based on the theory of cooperation. Genetically unstable partially transformed cells proliferate and yield different mutant cell types. The different cell types cooperate with each other, enabling them to survive and proliferate. The concept of cooperation among partially transformed cells is added to the traditional view of tumor progression. As in the traditional view, eventually one cell may accumulate sufficient mutations to express all of the functions required for a clone of fully malignant cells to emerge as the dominant species. Adapted from (A) Greaves [6] and Axelrod et al. [5].

other as a unit [13]. In the 1950s, Odum et al. [14] popularized the concept of ecosystems as interactive systems established between a group of living creatures and their biotope (the nonliving components of the environment). Although they may be bounded and individually discussed, ecosystems do not exist independently but interact in a complex web of ecological relationships connecting all ecosystems to make up the biosphere (earth as a whole). The emergent properties of ecosystems are the consequence of the interactions of a diverse mixture of different organisms with each other and with their nonbiological environment. The organisms in ecosystems are characterized by the numbers of each type of organism, their spatial and temporal organization, and their interactions with each other and with their physical and chemical environments [13,14]. Organ-

isms communicate with other similar and different kinds of organisms. Communication and feedback between organisms may be negative or positive [15]. Organisms compete for limited resources and cooperate for mutual advantage. Ecosystems are dynamic. The numbers and kinds of organisms may fluctuate with time. Predation may reduce the number of some organisms and increase the number of others. Organisms with low numbers may become extinct. Open systems may change over time with immigration or emigration, and closed systems may change as resources become limiting. Reproduction of organisms has consequences described by evolutionary considerations of variation, inheritance, and selection over time [16–19].

The cancer and host cells in the tumor microenvironment interact similarly to organisms in an ecological community. There are different

kinds of cells within a tumor and its adjacent region, including tumor-associated macrophages (TAMs), cancer-associated fibroblasts, myoepithelial cells, and other cells of the host stroma [20–27]. Cells associated with the tumor may have characteristic spatial organization, such as host-infiltrating macrophages and angiogenic endothelial cells within the mass of cancer cells, or myoepithelial and stromal cells external to the cancer mass. The spatial organization of the tumor, i.e., tumor morphology, is influenced by selective pressure from the microenvironment [28]. Communication between tumor cells and between tumor and host cells occurs through direct physical interactions and paracrine signaling [29–34]. Tumors, like classic ecosystems, are dynamic, and the kinds of cells and the number of cells change with time. For instance, an increase in the number of cells with constitutively up-regulated aerobic glycolysis (Warburg effect) [35]. In the evolutionary context, cancer cells and host cells accumulate mutations by selection or genetic drift [3,36–39]. Together, the cancer cells and host cells, interacting within their habitat, create an ecosystem. This ecosystem, in turn, exists within a larger environment or biosphere (the host patient).

Opportunities for Ecological Therapy for Cancer

The similarity of classic ecological systems and tumors suggests, by analogy, that some features of ecological systems could be exploited for cancer therapy. A species within an ecosystem can be destroyed by directly killing the species itself, e.g., the extinction of the dodo bird on Mauritius in the 16th and 17th centuries [40]. Within the paradigm of contemporary cancer therapy, this is exemplified by chemotherapy and targeted agents [41–43]. In general, this is an inefficient approach and, except for a few notable exceptions, has rarely resulted in curative cancer treatment [44]. Within the context of darwinian evolution, often the most efficient way to kill a species is to destroy its niche by altering the environment. Ecological systems exist as a network of dependencies. In a simple example, it is much easier to drain a swamp than it is to individually swat all of the mosquitoes living there. This approach, however, also kills all of the other species living in the swamp. The challenge in patients with cancer is to identify nonessential elements of the environment that are promoting the growth of the cancer cells and to eliminate them. These nonessential elements may be host cells that may be attracted to the tumor site and not normal components of that microenvironment or they may be normal host cells that have been altered by their ongoing interactions with the cancer cells. Another way to change the dynamic interactions of the ecosystem is to alter the microenvironment in such a way that is harmful to the cancer cells but does not cause long-term detriment of the patient. For example, it has been long recognized that heat is an important microenvironmental and epigenetic factor in biological development [44,45]. In many tumor types, hyperthermia (41–43°C) increases and synergizes the therapeutic response to radiation, cytotoxic drugs, and immunotherapy [44–46]. As noted by Coffey et al. [44], hyperthermia has not been widely accepted because of limitations in clinical application and understanding. With new types of thermal delivery systems, however, it is now possible to more precisely target cancer cells with specific tumor cell hyperthermia and alter the local ecology of the tumor microenvironment to enhance the effects of radiation and chemotherapy [44,47–49]. This approach has been termed *temperature-enhanced metastatic therapy* (R.H. Getzenberg, Johns Hopkins University). It should be noted that ecosystems, by definition, are adaptive. In this instance, if the cancer cells are not eliminated by thermally enhanced therapy, ther-

motolerant subclones of cancer and host cells may be selected, and the ecosystem will dynamically reorganize to a new state.

As noted, another way to alter the ecosystem is to kill other species within the environment that are supporting the growth and survival of the species of interest. One of the features of classic ecosystems is the interdependence of different types of organisms on each other. Some organisms may be dependent on others for survival, such as parasitism to the benefit of one to the detriment of the other or commensalism in which there is a benefit of one without harm to the other. Another example of biological interaction between species is mutualism or symbiosis, where both species benefit from interacting with each other. The implications for cancer therapy for commensalism and mutualism are that targeting noncancer cells, from which the cancer cells are receiving benefit, should also reduce the number of tumor cells. Examples of noncancer cells that cancer cells depend on/receive benefit from include endothelial cells, cancer-associated fibroblasts, and TAMs.

Prostate Cancer Bone Metastasis as an Example of a Tumor Ecosystem

Prostate cancer provides an example to apply the potential of ecological therapy. In prostate cancer, cells metastasize to the bone by parasitizing the hematopoietic stem cell niche [50,51]. We have previously described this process in a series of steps involving emigration from the primary prostate tumor, migration through the lymphatics and blood stream, immigration to the metastatic site, and naturalization of the bone marrow as the cancer cells establish themselves and proliferate. We continue to hypothesize that the cancer cells may cooperate with each other and with host cells to share resources and provide each other with growth and survival factors to successfully create a new ecosystem in the bone microenvironment [5,15,50,51]. Prostate cancer cells in a bone metastasis ecosystem are in close proximity, or contact, and communicate with multiple kinds of host cells. Each group of cells of similar morphology and function can be considered as a separate species (Figure 2).

These cells include hematopoietic stem cells, mesenchymal stem cells, endothelial cells, pericytes, fibroblasts, macrophages, T and B lymphocytes, dendritic cells, adipocytes, neurons, osteoclasts, osteoblasts, megakaryocytes, neutrophils, and eosinophils. All of these cell species are interacting with the soluble and insoluble factors that make up the nonliving components (biotope) of the bone microenvironment [14]. Insoluble factors include the collagen and pyrophosphate of the bone extracellular matrix. Soluble factors include those supplied by host biosphere through the blood stream, e.g., oxygen, nutrients, trace elements, and hormones, and those produced locally, e.g., chemokines and cytokines. Although all of these components are interacting in a dynamic fashion, the ecosystem paradigm provides a conceptual framework to understand these interactions and defines therapeutic interventions based on them. For example, because many of these cells are providing the cancer cells with factors that promote growth and survival, inhibiting their function will in turn, inhibit cancer cell proliferation.

Using the Ecosystem Paradigm to Identify Possible Therapies: The Case of Metastatic Prostate Cancer

Bone metastases from prostate cancer kill 28,000 men in the United States each year [52]. Once prostate cancer cells travel to a bone marrow site and begin to naturalize, they create a tumor ecosystem that is

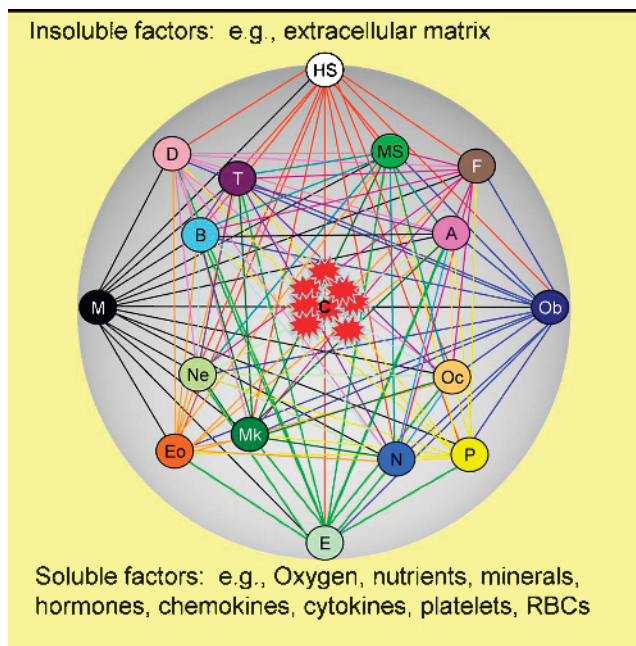


Figure 2. The prostate cancer bone metastasis ecosystem. Prostate cancer cells (C) in the bone metastasis ecosystem are in close proximity and/or contact with a variety of cell types, each of which can be considered a species based on their similarities in morphology and function. These cell types include hematopoietic stem cells (HS), mesenchymal stem cells (MS), endothelial cells (E), pericytes (P), fibroblasts (F), macrophages (M), T lymphocytes (T), B lymphocytes (B), dendritic cells (D), adipocytes (A), neurons (N), osteoclasts (Oc), osteoblasts (Ob), megakaryocytes (Mk), neutrophils (Ne), and eosinophils (Eo). All of these cell species are interacting with the soluble and insoluble factors that make up the biotope of the bone microenvironment. Insoluble factors include the collagen and pyrophosphate of the bone extracellular matrix. Soluble factors include those supplied by host biosphere through the blood stream, e.g., oxygen, trace elements, and hormones, and those produced locally, e.g., chemokines and cytokines. The lines connecting cell types suggest possible interactions.

fundamentally different from normal bone marrow. The interaction of cancer cells with the bone microenvironment results in a vicious cycle in which tumor cells cooperate with both host osteoclasts and osteoblasts to exacerbate bone destruction and increase cancer cell growth [53–56]. Targeting the various elements of this vicious cycle provides an example of ecological therapy (Table 1 and Figure 3). The normal host cells that are participating in the tumor ecosystem of a bone metastasis are functioning inappropriately. Therefore, they represent viable targets for therapy that should not harm the normal bone microenvironment of the patient.

All cells within the bone tumor ecosystem, including the prostate cancer cells, require a constant supply of nutrients from the blood stream. A proliferating tumor mass requires new blood vessels to sprout and proliferate (neovascularization). In this setting, new blood vessel growth is not required by the body, and therefore, neovascularization has been recognized as an ideal target for cancer therapy. Strategies that block neovascularization by inhibiting different targets are in development. These include a current phase 3 trial of the combination of the anti-vascular endothelial growth factor (VEGF) antibody bevacizumab with the chemotherapeutic agent docetaxel in

men with advanced prostate cancer [57]. The interaction of VEGF with its receptors can also be blocked with antibodies that bind to the VEGF receptors or with kinase inhibitors, many of which are in phase 2 trials [58,59]. Another strategy blocks the sprouting of blood vessels into the extracellular matrix through inhibition of integrin binding, consequently, restricting tumor growth [60].

In bone metastases, bone metabolism has been deregulated, and the cells that mediate bone turnover, osteoblast and osteoclasts, are inappropriately turned on. This provides another ideal target for therapy as there is very little bone remodeling in the normal adult. Much attention, therefore, has been focused on interrupting the osteoblast-osteoclast axis in bone metastases. Endothelin-1 is a mediator of growth and function for osteoblasts, and inhibition of its receptor continues to be of major interest to the prostate cancer community [61,62]. Interleukin-6 (IL-6) is produced by osteoblasts and serves as a potent survival cytokine for cancer cells and multiple host cells. Interruption of IL-6 has been demonstrated to have profound effects on the tumor ecosystem, including inhibiting osteoclast maturation and function, enhancing chemotherapy efficacy, and decreasing macrophage survival [63,64]. Osteoblasts and osteoclasts directly communicate through the osteoprotegerin receptor–receptor activator of NF-κB ligand (RANKL) axis, which mediates maturation of the osteoclasts [65]. This axis is inhibited by denosumab, a fully human monoclonal antibody to RANKL. Osteoclast maturation and function can also be inhibited by the bisphosphonates, which bind to exposed bone matrix and directly poison the osteoclasts, by dasatinib, a tyrosine kinase inhibitor that targets the src pathway, and by odanacatib, a cathepsin K inhibitor that blocks enzyme degradation of the bone [66–69]. The bisphosphonates are in widespread clinical use as adjuncts to chemotherapy for advanced prostate cancer. Interrupting the bone remodeling axis is an example of therapy that inhibits host cells that are providing essential factors to the tumor cells, i.e., interrupting the ecologic network of dependencies.

While agents that inhibit endothelial cells, osteoblasts, and osteoclasts have all been put to clinical use, the bone metastasis ecosystem paradigm identifies several new targets for cancer therapy. Transforming growth factor beta (TGFβ) is a powerful regulator of tumor initiation, progression, and metastasis [70–73]. Transforming growth factor beta mediates interactions between cancer cells and their

Table 1. Targeting the Noncancer Cell Species in the Prostate Cancer Metastasis Ecosystem with Therapeutic Intent.

Cell Type	Target	Example Agents	References
Endothelial cells	VEGF	Bevacizumab	[57]
	VEGF receptor	Sunitinib, sorafenib	[58,59]
	α _v Integrins	CNT095, Vitaxin	[60]
Osteoblasts	Endothelin-1	Atrasentan, ZD-4054	[61,62]
	IL-6	CNT0328	[63,64]
Osteoclasts	RANKL	Denosumab	[65]
	Maturation	Bisphosphonates	[66,67]
	src	Dasatinib	[68]
	Cathepsin K	Odanacatib	[69]
Fibroblasts	TGFβ	Lerdelimumab, SB431542	[70–73]
Mesenchymal progenitor cells	Prostaglandins	COX-2 inhibitors	[76,77]
Hematopoietic progenitor cells	CXCL12	Sitagliptin, AMD3100	[79–82]
	Annexin II	Interferon gamma	[83]
Eosinophils	Eotaxin (CCL11)	Heparin, prednisolone	[84,85]
Neutrophils	CXCR1/CXCR2	Reparixin	[86]
T cells	CTLA-4	Ipilimumab	[87,88]
Macrophages	CCL2	CNT0888	[95,96]
	CCR2	Adalimumab	[97]

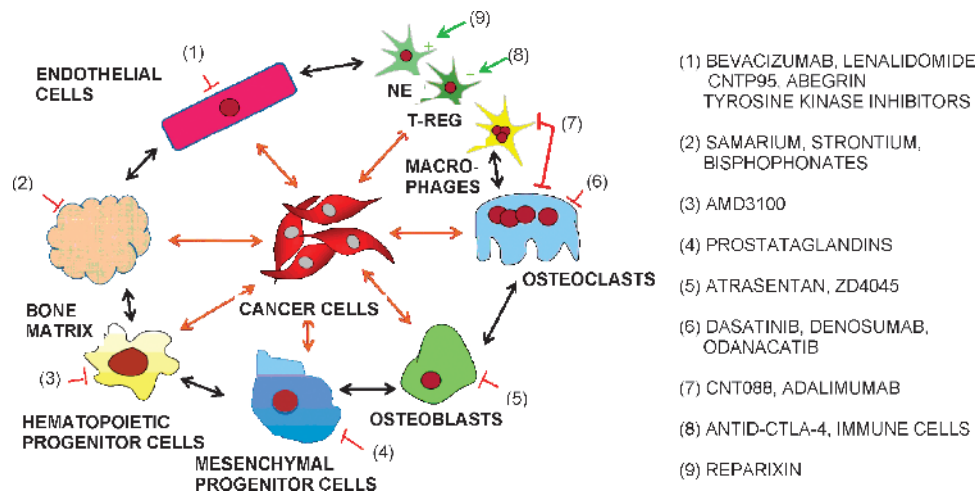


Figure 3. Targeting the prostate cancer metastasis ecosystem for cancer therapy. The ecosystem of prostate cancer bone metastases presents several targets for cancer therapy that are currently being studied in the preclinical and clinical settings. Agents to inhibit osteoclast maturation and function (bisphosphonates) as well as endothelial cell proliferation (bevacizumab) are already in clinical use. Agents that inhibit osteoblast function are in clinical trial. Agents that modulate the cells of the immune system hold promise and are being studied preclinically as well as clinically. The recognition that cancer cells interact with mesenchymal and hematopoietic stem cells has opened new avenues of investigation for the treatment of bone metastases.

microenvironment. For example, the loss of TGF β signaling in fibroblasts results in a protumorigenic microenvironment that supports the transformation of adjacent epithelial cells [73]. The inhibition of TGF β signaling is being explored with several small molecule and antibody inhibitors [70]. Mesenchymal stem cells have been proposed as the center of a bone metabolic unit that regulates bone homeostasis and the bone microenvironment [74–77]. Mesenchymal stem cells are a pluripotent cell type that can differentiate into adipocytes, osteoblasts, and other cells and, therefore, play a major supportive role in the prostate cancer metastasis ecosystem. Potential methods to clinically inhibit mesenchymal stem cells are largely unexplored. We propose, however, that prostaglandin inhibitors, e.g., COX-2 pathway, may be able to affect the function of these cells within the context of tumors [74,75]. Hematopoietic stem or progenitor cells (HSCs) are another major component of the bone tumor microenvironment. The realization of the importance of the HSC niche in the process of metastasis has been growing with the discovery that metastasizing cancer cells use many of the same mechanisms and properties of HSCs to establish themselves in the bone [51,78]. It seems that cancer cells and HSCs compete for similar binding sites on osteoblasts [78]. Agents that act to mobilize HSC and/or cancer cells out of the bone marrow microenvironment, or prevent them from binding in the endosteal niche, may be valuable additions to ecological therapy against bone metastases [79–83].

Another major component of the bone metastasis ecosystem consists of cells of the immune system. Modulators of these cells, many in development for inflammatory diseases, have been largely unexplored in cancer therapy. Eosinophils may be targeted by inhibiting eotaxin through heparin analogs or steroids [84,85]. Neutrophil recruitment may be inhibited by blocking CXCR1/CXCR2–mediated chemotaxis [86]. FoxP3 (+) regulatory T cells (Tregs) are necessary for control of deleterious immune responses [87]. Tregs have been demonstrated to have antitumor activity through a variety of immunomodulatory mechanisms. CTLA4 negatively regulates steady-state Treg homeostasis, and inhibition of CTLA4 has been demonstrated

to have an anticancer activity by increasing the Treg presence and function at tumor sites [87,88].

One of the best examples of cooperation among cell types within the tumor microenvironment is the relationship between cancer cells and TAMs [89–91]. Tumor-associated macrophages and cancer cells cooperate with each other in the tumor ecosystem in a symbiotic relationship that promotes the proliferation and growth of each other. Tumor-associated macrophages are a rich source of growth factors, e.g., VEGF, promoting blood vessel growth to the tumor, and epidermal growth factor, promoting cancer cell proliferation [92–94]. In turn, cancer cells provide soluble factors to promote survival of the TAMs, e.g., IL-6 and monocyte chemoattractant protein 1 (MCP-1, CCL2) [95]. Because TAMs are not a part of the normal bone microenvironment, they can be treated as an invasive species to the ecosystem. We, and others, have demonstrated that inhibition of TAM infiltration into the tumor microenvironment by blocking CCL2-mediated chemoattraction is a potent suppressor of tumor growth in preclinical models [95,96]. Interruption of this pathway is an area of active clinical investigation [95–97].

Conclusion

Initially, an expanding population of cancer cells, whether they are at the primary site or at a metastatic site, exists as an invasive species of a particular organ ecosystem. As the cancer cells proliferate, they become the dominant species and naturalize the environment to create a tumor ecosystem that is not only based on the properties of the tumor cells but also defined by the cell types and biotope of that particular organ [3]. By recognizing that tumors have similarities to classic ecosystems, we have extended the concept of the tumor microenvironment. The ecosystem framework reminds us that tumors are dynamic evolving systems that involve not only the cancer cells changing with time, but the host components as well. This strategy suggests multitargeted therapeutic approaches based on defining the unique elements of the ecological niche created by tumor-host interactions. We have termed this strategy *ecological therapy* for cancer.

Acknowledgments

The authors thank Rhonda Hotchkin for editorial assistance and manuscript preparation.

References

- [1] Cairns J (1975). Mutation selection and the natural history of cancer. *Nature* **255**, 197–200.
- [2] Greaves M (2007). Darwinian medicine: a case for cancer. *Nat Rev Cancer* **7**, 213–221.
- [3] Merlo LM, Pepper JW, Reid BJ, and Maley CC (2006). Cancer as an evolutionary and ecological process. *Nat Rev Cancer* **6**, 924–935.
- [4] Nowell PC (1976). The clonal evolution of tumor cell populations. *Science* **194**, 23–28.
- [5] Axelrod R, Axelrod DE, and Pienta KJ (2006). Evolution of cooperation among tumor cells. *Proc Natl Acad Sci USA* **103**, 13474–13479.
- [6] Greaves M (2002). Cancer causation: the darwinian downside of past success? *Lancet Oncol* **3**, 244–251.
- [7] Elser JJ, Kyle MM, Smith MS, and Nagy JD (2007). Biological stoichiometry in human cancer. *PLoS ONE* **2**, e1028.
- [8] Nagy JD (2005). The ecology and evolutionary biology of cancer: a review of mathematical models of necrosis and tumor cell diversity. *Math Biosci Eng* **2**, 381–418.
- [9] Vineis P (2003). Cancer as an evolutionary process at the cell level: an epidemiological perspective. *Carcinogenesis* **24**, 1–6.
- [10] Anderson AR and Quaranta V (2008). Integrative mathematical oncology. *Nat Rev Cancer* **8**, 227–234.
- [11] Munsury Y and Deisboeck TS (2006). Modeling tumors as complex biosystems: an agent-based approach. In TS Deisboeck and JY Kresh (Eds.). *Complex Systems Science in Biomedicine*. New York, NY: Springer, pp. 573–602.
- [12] Schwab ED and Pienta KJ (1996). Cancer as a complex adaptive system. *Med Hypotheses* **47**, 235–241.
- [13] Willis A (1997). The ecosystem: an evolving concept viewed historically. *Funct Ecol* **11**, 268–271.
- [14] Odum EP (1953). *Fundamentals of Ecology*. Philadelphia, PA: Saunders.
- [15] Axelrod R and Hamilton WD (1981). The evolution of cooperation. *Science* **211**, 1390–1396.
- [16] Begon M, Harper JL, and Townsend CR (1996). *Ecology: Individuals, Populations, and Communities*. Cambridge, MA: Blackwell Science.
- [17] Hall CAS and Day JW Jr (1990). *Ecosystem Modeling in Theory and Practice: An Introduction with Case Histories*. Niwot, CO: University Press of Colorado.
- [18] Kitching R (1983). *Systems Ecology: An Introduction to Ecological Modeling*. St. Lucia, Queensland: University Queensland Press.
- [19] Ricklefs R (1990). *Ecology*. New York, NY: WH Freeman.
- [20] Bhowmick NA, Neilson EG, and Moses HL (2004). Stromal fibroblasts in cancer initiation and progression. *Nature* **432**, 332–337.
- [21] Crowther M, Brown NJ, Bishop ET, and Lewis CE (2001). Microenvironmental influence on macrophage regulation of angiogenesis in wounds and malignant tumors. *J Leukoc Biol* **70**, 478–490.
- [22] Jones JL, Shaw JA, Pringle JH, and Walker RA (2003). Primary breast myoepithelial cells exert an invasion-suppressor effect on breast cancer cells via paracrine down-regulation of MMP expression in fibroblasts and tumour cells. *J Pathol* **201**, 562–572.
- [23] Kalluri R and Zeisberg M (2006). Fibroblasts in cancer. *Nat Rev Cancer* **6**, 392–401.
- [24] Kelly PM, Davison RS, Bliss E, and McGee JO (1988). Macrophages in human breast disease: a quantitative immunohistochemical study. *Br J Cancer* **57**, 174–177.
- [25] Olumi AF, Grossfeld GD, Hayward SW, Carroll PR, Tlsty TD, and Cunha GR (1999). Carcinoma-associated fibroblasts direct tumor progression of initiated human prostatic epithelium. *Cancer Res* **59**, 5002–5011.
- [26] Stephens TC, Currie GA, and Peacock JH (1978). Repopulation of gamma-irradiated Lewis lung carcinoma by malignant cells and host macrophage progenitors. *Br J Cancer* **38**, 573–582.
- [27] Sternlicht MD, Kedeshian B, Shao ZM, Safarians S, and Barsky SH (1997). The human myoepithelial cell is a natural tumor suppressor. *Clin Cancer Res* **3**, 1949–1958.
- [28] Anderson AR, Weaver AM, Cummings PT, and Quaranta V (2006). Tumor morphology and phenotypic evolution driven by selective pressure from the microenvironment. *Cell* **127**, 905–915.
- [29] Bhowmick NA, Chytil A, Plieth D, Gorska AE, Dumont N, Shappell S, Washington MK, Neilson EG, and Moses HL (2004). TGF-beta signaling in fibroblasts modulates the oncogenic potential of adjacent epithelia. *Science* **303**, 848–851.
- [30] Elenbaas B and Weinberg RA (2001). Heterotypic signaling between epithelial tumor cells and fibroblasts in carcinoma formation. *Exp Cell Res* **264**, 169–184.
- [31] Hu M and Polyak K (2008). Microenvironmental regulation of cancer development. *Curr Opin Genet Dev* **18**, 27–34.
- [32] Orimo A, Gupta PB, Sgroi DC, Arenzana-Seisdedos F, Delaunay T, Naeem R, Carey VJ, Richardson AL, and Weinberg RA (2005). Stromal fibroblasts present in invasive human breast carcinomas promote tumor growth and angiogenesis through elevated SDF-1/CXCL12 secretion. *Cell* **121**, 335–348.
- [33] Tlsty TD (2001). Stromal cells can contribute oncogenic signals. *Semin Cancer Biol* **11**, 97–104.
- [34] Weinberg R and Mihich E (2006). Eighteenth Annual Pezcoller Symposium: tumor microenvironment and heterotypic interactions. *Cancer Res* **66**, 11550–11553.
- [35] Gatenby RA and Gillies RJ (2008). A microenvironmental model of carcinogenesis. *Nat Rev Cancer* **8**, 56–61.
- [36] Aranda-Anzaldo A (2001). Cancer development and progression: a non-adaptive process driven by genetic drift. *Acta Biotheor* **49**, 89–108.
- [37] Cahill DP, Kinzler KW, Vogelstein B, and Lengauer C (1999). Genetic instability and darwinian selection in tumours. *Trends Cell Biol* **9**, M57–M60.
- [38] Crespi BJ and Summers K (2006). Positive selection in the evolution of cancer. *Biol Rev Camb Philos Soc* **81**, 407–424.
- [39] Hawasawi NM, Ghebeh H, Hendrayani SF, Tulbah A, Al-Eid M, Al-Tweigeri T, Ajarim D, Alaiya A, Dermime S, and Aboussekhra A (2008). Breast carcinoma-associated fibroblasts and their counterparts display neoplastic-specific changes. *Cancer Res* **68**, 2717–2725.
- [40] Fuller E (2004). *The Dodo: Extinction in Paradise*. Piermont, NH: Bunker Hill.
- [41] Allgayer H and Fulda S (2008). An introduction to molecular targeted therapy of cancer. *Adv Med Sci* **53**, doi:10.2478/v10039-008-0025-9.
- [42] Jones SE (2008). Metastatic breast cancer: the treatment challenge. *Clin Breast Cancer* **8**, 224–233.
- [43] Yasui H and Imai K (2008). Novel molecular-targeted therapeutics for the treatment of cancer. *Anticancer Agents Med Chem* **8**, 470–480.
- [44] Coffey DS, Getzenberg RH, and DeWeese TL (2006). Hyperthermic biology and cancer therapies: a hypothesis for the “Lance Armstrong effect”. *JAMA* **296**, 445–448.
- [45] Dewhirst MW, Vujaskovic Z, Jones E, and Thrall D (2005). Re-setting the biologic rationale for thermal therapy. *Int J Hyperthermia* **21**, 779–790.
- [46] Hahn GM, Braun J, and Har-Kedar I (1975). Thermochemotherapy: synergism between hyperthermia (42–43 degrees) and adriamycin (of bleomycin) in mammalian cell inactivation. *Proc Natl Acad Sci USA* **72**, 937–940.
- [47] Brizel DM, Scully SP, Harrelson JM, Layfield LJ, Dodge RK, Charles HC, Samulski TV, Prosnitz LR, and Dewhirst MW (1996). Radiation therapy and hyperthermia improve the oxygenation of human soft tissue sarcomas. *Cancer Res* **56**, 5347–5350.
- [48] Roti Roti JL, Kampinga HH, Malyapa RS, Wright WD, vanderWaal RP, and Xu M (1998). Nuclear matrix as a target for hyperthermic killing of cancer cells. *Cell Stress Chaperones* **3**, 245–255.
- [49] Westermann AM, Jones EL, Schem BC, van der Steen-Banasik EM, Koper P, Mella O, Uitterhoeve AL, de Wit R, van der Velden J, Burger C, et al. (2005). First results of triple-modality treatment combining radiotherapy, chemotherapy, and hyperthermia for the treatment of patients with stage IIB, III, and IVA cervical carcinoma. *Cancer* **104**, 763–770.
- [50] Pienta KJ and Loberg R (2005). The “emigration, migration, and immigration” of prostate cancer. *Clin Prostate Cancer* **4**, 24–30.
- [51] Shiozawa Y, Havens AM, Pienta KJ, and Taichman RS (2008). The bone marrow niche: habitat to hematopoietic and mesenchymal stem cells, and unwitting host to molecular parasites. *Leukemia* **22**, 941–950.
- [52] Jemal A, Siegel R, Ward E, Hao Y, Xu J, Murray T, and Thun MJ (2008). Cancer statistics, 2008. *CA Cancer J Clin* **58**, 71–96.
- [53] Clines GA and Guise TA (2008). Molecular mechanisms and treatment of bone metastasis. *Expert Rev Mol Med* **10**, e7.
- [54] Guise TA (2002). The vicious cycle of bone metastases. *J Musculoskelet Neuronal Interact* **2**, 570–572.
- [55] Loberg RD, Logothetis CJ, Keller ET, and Pienta KJ (2005). Pathogenesis and treatment of prostate cancer bone metastases: targeting the lethal phenotype. *J Clin Oncol* **23**, 8232–8241.
- [56] Mundy GR (2002). Metastasis to bone: causes, consequences and therapeutic opportunities. *Nat Rev Cancer* **2**, 584–593.

- [57] Ryan CJ, Lin AM, and Small EJ (2006). Angiogenesis inhibition plus chemotherapy for metastatic hormone refractory prostate cancer: history and rationale. *Urol Oncol* **24**, 250–253.
- [58] Baka S, Clamp AR, and Jayson GC (2006). A review of the latest clinical compounds to inhibit VEGF in pathological angiogenesis. *Expert Opin Ther Targets* **10**, 867–876.
- [59] Flaherty KT (2007). Sorafenib: delivering a targeted drug to the right targets. *Expert Rev Anticancer Ther* **7**, 617–626.
- [60] Tucker GC (2006). Integrins: molecular targets in cancer therapy. *Curr Oncol Rep* **8**, 96–103.
- [61] Bagnato A and Rosano L (2008). The endothelin axis in cancer. *Int J Biochem Cell Biol* **40**, 1443–1451.
- [62] Lalich M, McNeel DG, Wilding G, and Liu G (2007). Endothelin receptor antagonists in cancer therapy. *Cancer Invest* **25**, 785–794.
- [63] Adachi Y, Yoshio-Hoshino N, and Nishimoto N (2008). The blockade of IL-6 signaling in rational drug design. *Curr Pharm Des* **14**, 1217–1224.
- [64] Wallner L, Dai J, Escara-Wilke J, Zhang J, Yao Z, Lu Y, Trikha M, Nemeth JA, Zaki MH, and Keller ET (2006). Inhibition of interleukin-6 with CNTO328, an anti-interleukin-6 monoclonal antibody, inhibits conversion of androgen-dependent prostate cancer to an androgen-independent phenotype in orchietomized mice. *Cancer Res* **66**, 3087–3095.
- [65] Gallagher JC (2008). Advances in bone biology and new treatments for bone loss. *Maturitas* **60**, 65–69.
- [66] Fuller K, Lawrence KM, Ross JL, Grabowska UB, Shiroo M, Samuelsson B, and Chambers TJ (2008). Cathepsin K inhibitors prevent matrix-derived growth factor degradation by human osteoclasts. *Bone* **42**, 200–211.
- [67] Lipton A (2007). Treatment of bone metastases and bone pain with bisphosphonates. *Support Cancer Ther* **4**, 92–100.
- [68] Luo FR, Barrett YC, Yang Z, Camuso A, McGlinchey K, Wen ML, Smykla R, Fager K, Wild R, Palme H, et al. (2008). Identification and validation of phospho-SRC, a novel and potential pharmacodynamic biomarker for dasatinib (SPRYCEL™), a multi-targeted kinase inhibitor. *Cancer Chemother Pharmacol* **62**, 1065–1074.
- [69] Smith MR (2008). Osteoclast targeted therapy for prostate cancer: bisphosphonates and beyond. *Urol Oncol* **26**, 420–425.
- [70] Brierie B and Moses HL (2006). Tumour microenvironment: TGFbeta: the molecular Jekyll and Hyde of cancer. *Nat Rev Cancer* **6**, 506–520.
- [71] Biswas S, Guix M, Rinehart C, Dugger TC, Chytil A, Moses HL, Freeman ML, and Arteaga CL (2007). Inhibition of TGF-beta with neutralizing antibodies prevents radiation-induced acceleration of metastatic cancer progression. *J Clin Invest* **117**, 1305–1313.
- [72] Pardali K and Moustakas A (2007). Actions of TGF-beta as tumor suppressor and pro-metastatic factor in human cancer. *Biochim Biophys Acta* **1775**, 21–62.
- [73] Stover DG, Brierie B, and Moses HL (2007). A delicate balance: TGF-beta and the tumor microenvironment. *J Cell Biochem* **101**, 851–861.
- [74] Helder MN, Knippenberg M, Klein-Nulend J, and Wuisman PI (2007). Stem cells from adipose tissue allow challenging new concepts for regenerative medicine. *Tissue Eng* **13**, 1799–1808.
- [75] Knippenberg M, Helder MN, de Blicke-Hogervorst JM, Wuisman PI, and Klein-Nulend J (2007). Prostaglandins differentially affect osteogenic differentiation of human adipose tissue-derived mesenchymal stem cells. *Tissue Eng* **13**, 2495–2503.
- [76] Post S, Abdallah BM, Bentzon JF, and Kassem M (2008). Demonstration of the presence of independent pre-osteoblastic and pre-adipocytic cell populations in bone marrow-derived mesenchymal stem cells. *Bone* **43**, 32–39.
- [77] Yang DC, Tsay HJ, Lin SY, Chiou SH, Li MJ, Chang TJ, and Hung SC (2008). cAMP/PKA regulates osteogenesis, adipogenesis and ratio of RANKL/OPG mRNA expression in mesenchymal stem cells by suppressing leptin. *PLoS ONE* **3**, e1540.
- [78] Shiozawa Y, Havens AM, Jung Y, Ziegler AM, Pedersen EA, Wang J, Lu G, Roodman GD, Loberg RD, Pienta KJ, et al. (2008). Annexin II/Annexin II receptor axis regulates adhesion, migration, homing, and growth of prostate cancer. *J Cell Biochem* **105**, 370–380.
- [79] Doupis J and Veves A (2008). DPP4 inhibitors: a new approach in diabetes treatment. *Adv Ther* **25**, 627–643.
- [80] Focosi D, Kast RE, Metelli MR, Benedetti E, Galimberti S, Papineschi F, and Petrini M (2008). Enhancement of hematopoietic stem cell engraftment by inhibition of CXCL12 proteolysis with sitagliptin, an oral dipeptidyl-peptidase IV inhibitor: a report in a case of delayed graft failure. *Leuk Res*.
- [81] Hassane DC, Guzman ML, Corbett C, Li X, Abboud R, Young F, Liesveld JL, Carroll M, and Jordan CT (2008). Discovery of agents that eradicate leukemia stem cells using an *in silico* screen of public gene expression data. *Blood* **111**, 5654–5662.
- [82] Hastie C, Masters JR, Moss SE, and Naaby-Hansen S (2008). Interferon-gamma reduces cell surface expression of annexin 2 and suppresses the invasive capacity of prostate cancer cells. *J Biol Chem* **283**, 12595–12603.
- [83] Pelus LM (2008). Peripheral blood stem cell mobilization: new regimens, new cells, where do we stand. *Curr Opin Hematol* **15**, 285–292.
- [84] Kanabar V, Page CP, Simcock DE, Karner C, Mahn K, O'Connor BJ, and Hirst SJ (2008). Heparin and structurally related polymers attenuate eotaxin-1 (CCL11) release from human airway smooth muscle. *Br J Pharmacol* **154**, 833–842.
- [85] Oliveira MS, de OBE, Zamuner S, Pires AL, Ferreira TP, Cordeiro RS, Lagente V, Martins MA, Wallace JL, and E Silva PM (2008). Suppressive effects of nitric oxide-releasing prednisolone NCX-1015 on the allergic pleural eosinophil recruitment in rats. *Clin Exp Allergy*.
- [86] Coelho FM, Pinho V, Amaral FA, Sachs D, Costa VV, Rodrigues DH, Vieira AT, Silva TA, Souza DG, Bertini R, et al. (2008). The chemokine receptors CXCR1/CXCR2 modulate antigen-induced arthritis by regulating adhesion of neutrophils to the synovial microvasculature. *Arthritis Rheum* **58**, 2329–2337.
- [87] Tang AL, Teijaro JR, Njau MN, Chandran SS, Azimzadeh A, Nadler SG, Rothstein DM, and Farber DL (2008). CTLA4 expression is an indicator and regulator of steady-state CD4⁺ FoxP3⁺ T cell homeostasis. *J Immunol* **181**, 1806–1813.
- [88] Lens M, Ferrucci PF, and Testori A (2008). Anti-CTLA4 monoclonal antibody ipilimumab in the treatment of metastatic melanoma: recent findings. *Recent Patents Anticancer Drug Discov* **3**, 105–113.
- [89] Guruvayoorappan C (2008). Tumor versus tumor-associated macrophages: how hot is the link? *Integr Cancer Ther* **7**, 90–95.
- [90] Sica A, Allavena P, and Mantovani A (2008). Cancer related inflammation: the macrophage connection. *Cancer Lett* **267**, 204–215.
- [91] Yuan A, Chen JJ, and Yang PC (2008). Pathophysiology of tumor-associated macrophages. *Adv Clin Chem* **45**, 199–223.
- [92] Brierie B, Stover DG, Abel TW, Chytil A, Gorska AE, Aakre M, Forrester E, Yang L, Wagner KU, and Moses HL (2008). Transforming growth factor-beta regulates mammary carcinoma cell survival and interaction with the adjacent microenvironment. *Cancer Res* **68**, 1809–1819.
- [93] DeNardo DG, Johansson M, and Coussens LM (2008). Immune cells as mediators of solid tumor metastasis. *Cancer Metastasis Rev* **27**, 11–18.
- [94] Johansson M, Denardo DG, and Coussens LM (2008). Polarized immune responses differentially regulate cancer development. *Immunol Rev* **222**, 145–154.
- [95] Loberg RD, Ying C, Craig M, Day LL, Sargent E, Neeley C, Wojno K, Snyder LA, Yan L, and Pienta KJ (2007). Targeting CCL2 with systemic delivery of neutralizing antibodies induces prostate cancer tumor regression *in vivo*. *Cancer Res* **67**, 9417–9424.
- [96] Lu Y, Cai Z, Xiao G, Keller ET, Mizokami A, Yao Z, Roodman GD, and Zhang J (2007). Monocyte chemotactic protein-1 mediates prostate cancer-induced bone resorption. *Cancer Res* **67**, 3646–3653.
- [97] van Kuijk AW, Gerlag DM, Vos K, Wolbink G, de Groot M, de Rie MA, Zwinderman AH, Dijkmans BA, and Tak PP (2008). A prospective, randomized, placebo-controlled study to identify biomarkers associated with active treatment in psoriatic arthritis: effects of adalimumab treatment on synovial tissue. *Ann Rheum Dis*.