

Research article

Open Access

Genome profiling of chronic myelomonocytic leukemia: frequent alterations of *RAS* and *RUNX1* genes

Véronique Gelsi-Boyer^{†1,2,3}, Virginie Trouplin^{†1,2}, José Adélaïde^{†1}, Nicola Aceto⁴, Virginie Remy¹, Stephane Pinson⁵, Claude Houdayer⁶, Christine Arnoulet², Danielle Sainty², Mohamed Bentires-Alj⁴, Sylviane Olschwang^{1,2}, Norbert Vey⁷, Marie-Joëlle Mozziconacci^{1,2}, Daniel Birnbaum*¹ and Max Chaffanet¹

Address: ¹Centre de Recherche en Cancérologie de Marseille, Laboratoire d'Oncologie Moléculaire, UMR891 Inserm, Institut Paoli-Calmettes, Marseille, France, ²Département de BioPathologie, Institut Paoli-Calmettes, Marseille, France, ³Université de la Méditerranée, Marseille, France, ⁴Friedrich Miescher Institute for Biomedical Research, Basel, Switzerland, ⁵Service de génétique clinique et moléculaire, Hôpital Edouard Herriot, Lyon, France, ⁶Laboratoire de génétique constitutionnelle, Institut Curie, Paris, France and ⁷Département d'Hématologie, Institut Paoli-Calmettes, Marseille, France

Email: Véronique Gelsi-Boyer - gelsiv@marseille.fnclcc.fr; Virginie Trouplin - trouplin@marseille.fnclcc.fr; José Adélaïde - adelaidej@marseille.fnclcc.fr; Nicola Aceto - Nicola.Aceto@fmi.ch; Virginie Remy - remyv@marseille.fnclcc.fr; Stephane Pinson - stephane.pinson@chu-lyon.fr; Claude Houdayer - claude.houdayer@curie.net; Christine Arnoulet - arnouletc@marseille.fnclcc.fr; Danielle Sainty - saintyd@marseille.fnclcc.fr; Mohamed Bentires-Alj - mohamed.bentires-alj@fmi.ch; Sylviane Olschwang - olschwangs@marseille.fnclcc.fr; Norbert Vey - veyn@marseille.fnclcc.fr; Marie-Joëlle Mozziconacci - mozziconaccimj@marseille.fnclcc.fr; Daniel Birnbaum* - daniel.birnbaum@inserm.fr; Max Chaffanet - chaffanetm@marseille.fnclcc.fr

* Corresponding author †Equal contributors

Published: 16 October 2008

Received: 9 June 2008

BMC Cancer 2008, 8:299 doi:10.1186/1471-2407-8-299

Accepted: 16 October 2008

This article is available from: <http://www.biomedcentral.com/1471-2407/8/299>

© 2008 Gelsi-Boyer et al; licensee BioMed Central Ltd.

This is an Open Access article distributed under the terms of the Creative Commons Attribution License (<http://creativecommons.org/licenses/by/2.0>), which permits unrestricted use, distribution, and reproduction in any medium, provided the original work is properly cited.

Abstract

Background: Chronic myelomonocytic leukemia (CMML) is a hematological disease close to, but separate from both myeloproliferative disorders (MPD) and myelodysplastic syndromes and may show either myeloproliferative (MP-CMML) or myelodysplastic (MD-CMML) features. Not much is known about the molecular biology of this disease.

Methods: We studied a series of 30 CMML samples (13 MP- and 11 MD-CMMLs, and 6 acutely transformed cases) from 29 patients by using Agilent high density array-comparative genomic hybridization (aCGH) and sequencing of 12 candidate genes.

Results: Two-thirds of samples did not show any obvious alteration of aCGH profiles. In one-third we observed chromosome abnormalities (e.g. trisomy 8, del20q) and gain or loss of genes (e.g. *NF1*, *RBI* and *CDK6*). *RAS* mutations were detected in 4 cases (including an uncommon codon 146 mutation in *KRAS*) and *PTPN11* mutations in 3 cases. We detected 11 *RUNX1* alterations (9 mutations and 2 rearrangements). The rearrangements were a new, cryptic inversion of chromosomal region 21q21-22 leading to break and fusion of *RUNX1* to *USP16*. *RAS* and *RUNX1* alterations were not mutually exclusive. *RAS* pathway mutations occurred in MP-CMMLs (~46%) but not in MD-CMMLs. *RUNX1* alterations (mutations and cryptic rearrangement) occurred in both MP and MD classes (~38%).

Conclusion: We detected *RAS* pathway mutations and *RUNX1* alterations. The latter included a new cryptic *USP16*-*RUNX1* fusion. In some samples, two alterations coexisted already at this early chronic stage.

Background

Chronic myelomonocytic leukemia (CMML) is a heterogeneous hematopoietic disease currently classified by the WHO organization as an entity close to, but separate from both myeloproliferative disorders (MPD) and myelodysplastic syndromes. CMML is included in the category of MPD/MDS diseases and defined by persistent peripheral monocytosis greater than $1 \times 10^9/L$, fewer than 20% blasts in the blood or bone marrow (BM), and BM dysplasia in one or more myeloid lineage. Because the blast number is a prognostic factor, CMML is divided in two types: type 1 with fewer than 5% in blood and 10% blasts in BM, and type 2 between 5 and 19% in blood or 10 and 19% in BM [1,2].

The problem of CMML resides in its classification and in the clinical and/or biological relevance of separating the proliferative and dysplastic presentations. The FAB system has recommended a division of CMML in two classes upon leucocyte count: leucocytosis $< 13 \times 10^9/L$ defines CMML as MDS-like (MD-CMML) and leucocytosis $> 13 \times 10^9/L$ as MPD-like (MP-CMML) [2]. The two classes have been variably associated with prognosis and their distinction is a matter of debate [3-7]. This reflects that, except in few imatinib-sensitive cases with PDGFRB alterations, the pathogenesis of CMML is poorly understood. Consequently, the definition and therapy of CMML remain unsatisfactory.

To better understand CMML and improve its classification we have studied the genome of a series of CMML samples by using genome-wide, high-density array-comparative genomic hybridization (aCGH) and DNA sequencing of candidate genes.

Methods

Patients and samples

A consecutive series of 30 BM samples were collected from 29 patients including 24 CMMLs and 6 acute transformations of CMML (AT-CMML). Patients were newly diagnosed or were known for hematopoietic disease and the therapeutic impact was evaluated every 3 months. Three patients (3, 52, 90) had received prior chemotherapy for an independent solid tumor. One had an 11q inversion and one had a t(1;3). Clinical and biological data of the 30 samples are presented in Additional file 1. Cytology and phenotype were assessed by three specialists (VGB, CA, DS). Nucleic acids extraction was done as described [8]. Gene expression profiles for the cases with available RNA have been reported [8]. The patients all signed an informed consent. The project and collection of samples were reviewed by the independent scientific review board of the Paoli-Calmettes Institute (COS), in accordance with current regulations and ethical concerns.

Array comparative genomic hybridization (aCGH)

Genomic imbalances were analyzed by aCGH using 244 K CGH Microarrays (Hu-244A, Agilent Technologies, Massy, France) as previously described [9,10]. The resolution is up to 6 kb. Scanning was done with Agilent Autofocus Dynamic Scanner (G2565BA, Agilent Technologies). Data analysis was made as previously described [10,11] and visualized with CGH Analytics 3.4 software (Agilent Technologies). Extraction data (\log_2 ratio) was done with CGH analytics while normalized and filtered \log_2 ratio were obtained from << Feature extraction >> software (Agilent Technologies). Copy number changes were characterized as reported [9,10].

The *RUNX1* gene map established within Mb scale was extracted from the build 36.1 from NCBI (March 2006 version) while its sequence (Ensembl Transcript ID ENST00000300305) was extracted from Ensembl database http://www.ensembl.org/Homo_sapiens/, which is based on the Ensembl release 48 – Dec 2007 assembly of the human genome. Genomic profile was established with CGH analytics® software (Agilent Technologies), from centromere to telomere, within the genomic intervals [28.0–30.5 Mb] and [33.8–36.3 Mb] of the short arm of the chromosome 21 (hg17 human genome mapping; build 35 from NCBI, May 2004 version).

DNA sequencing

Somatic mutations of *BRAF*, *JAK2*, *HRAS*, *KRAS*, *NRAS*, *NF1*, *RAF1*, *RB1*, *RUNX1*, *SOS1*, *SPRED1* and *STK11* genes were searched by sequencing exons and consensus splicing sites after PCR amplification of genomic DNA (Additional file 2). Most PCR amplifications were done in a total volume of 25 μ l PCR mix containing at least 10 ng template DNA, Taq buffer, 200 μ mol of each deoxynucleotide triphosphate, 20 pmol of each primer and 1 unit of Hot Star Taq (Qiagen). PCR amplification conditions were as follows: 95°C 10 min; 95°C 30 sec, variable temperature 30 sec, 72°C 45 sec for 30 cycles; 72°C 10 min. PCR products were purified using Millipore plate MSNU030.

Two microliters of the purified PCR products were used for sequencing using the Big Dye terminator v1.1 kit (Applied Biosystems). After G50 purification, sequences were loaded on an ABI 3130XL automat (Applied Biosystems). The sequence data files were analyzed using the SeqScape software (Additional file 2) and all mutations were confirmed on an independent PCR product.

PCR detection of *RUNX1* alterations

The *USP16-RUNX1* gene fusion was detected by using nested PCR amplification of retrotranscribed mRNA (RT-PCR) from BM cells of the patients as previously described [12]. Wild-type and fusion transcripts were amplified

using *RUNX1* and *USP16* primer sequences (Additional file 3). PCR products were visualized on agarose gel with ethidium bromide, and sequenced.

Results

Three types of aCGH profiles in CMML

Using genome-wide, high-density arrays we established the aCGH profiles of 30 samples from 29 patients, comprising 24 CMMLs and 6 AT-CMMLs. Examples of profiles are shown in Figure 1 and results are summarized in Table 1. Three main types of profiles were observed. Type 1 profiles showed gains or losses visible on the karyotype and affecting large regions of the genome, such as trisomy 8 (10%: cases 5, 12 and 88), deletions of part of the 20q arm (10%: cases 3, 74, and 96), or deletion (case 106) or complex rearrangements of chromosome 7 (case 3). Type 2

profiles showed rare and limited gains or losses that affected few or single genes such as deletions encompassing *NF1* at 17q11 (case 80), *RB1* at 13q14 (case 74), *RUNX1* at 21q21 (case 88), *CALN1* at 7q11 (case 12), amplification of 7q21 including the *CDK6* gene (case 3) or a series of short deletions on the 3q arm (case 1). A surprising deletion of the *MYC* locus was observed in case 106. The type 3 profile was said "normal-like" since no obvious alteration was detected. It occurred in two-thirds of the cases.

Mutations of RAS and RUNX1 genes

We analyzed the sequences of the three *RAS* genes. No mutation of *HRAS* was found. *NRAS* mutations were found in cases 12 and 78, and *KRAS* mutations in cases 79 and 89 (Table 1). One of these mutations affected codon

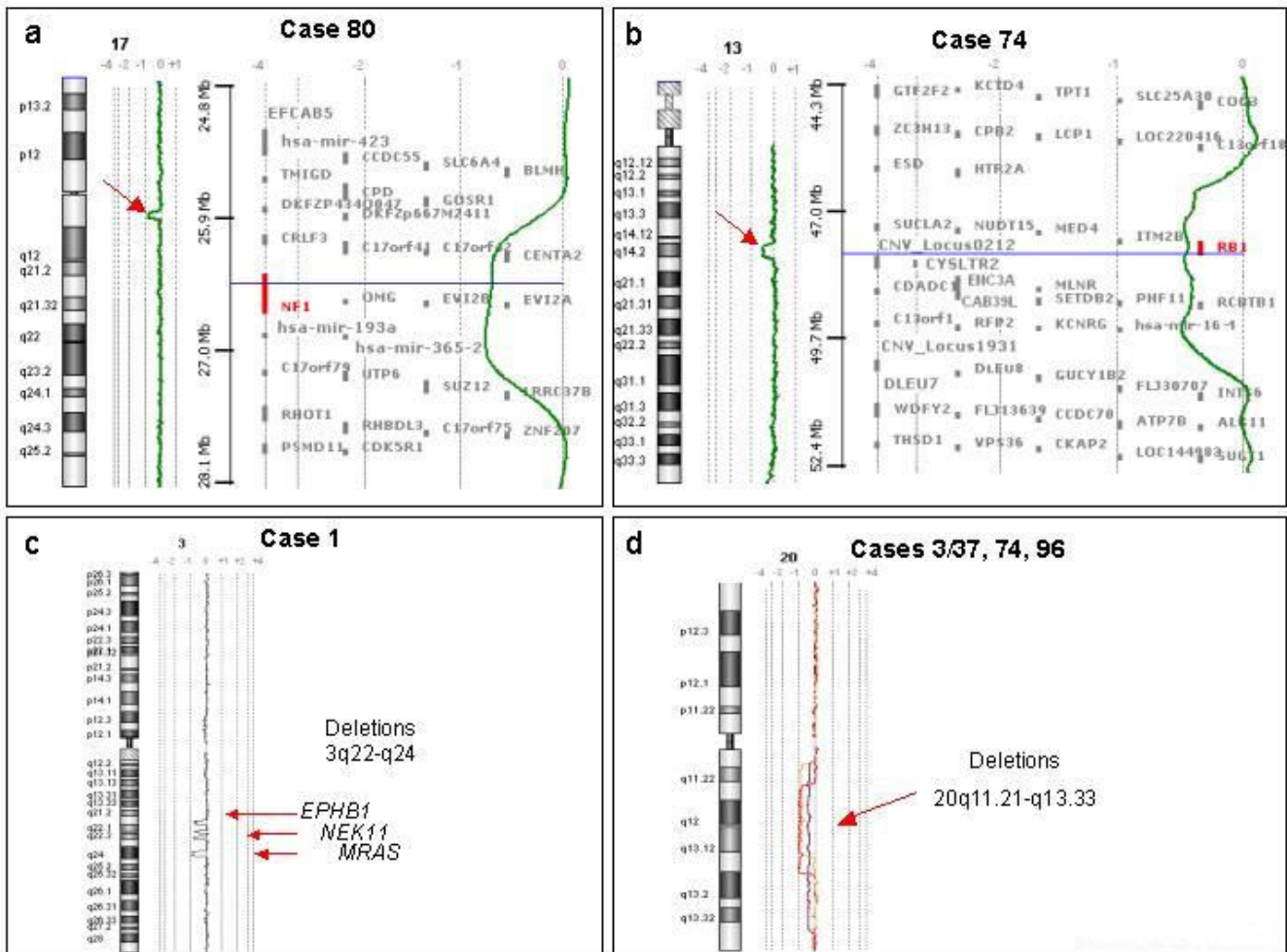


Figure 1
Examples of aCGH profiles. A: aCGH profile of chromosome 17 in case 80. Red arrow shows deletion including *NF1*. B: aCGH profile of chromosome 13 in case 74 showing *RB1* deletion. For a and b, a zoom of the region is shown to the right of the profiles. C: aCGH profile of chromosome 3 in case 1 showing a series of deletions at 3q. D: aCGH profiles of chromosome 20 in cases 3, 37, 74 and 96 (3 and 37 are from the same patient).

Table 1: Molecular features of the 30 studied CMML

No	Diagnosis	Karyotype	Array-CGH	H, K, NRAS	NFI	PTPNI1 E3, I3	RUNXI	SOS1 E7-I1	USP16-RUNXI rearrangement
1	CMML 2	46, XY [20]	3q22-24 losses (EPHB1, NEK11, MRAS...)	no	nd	p.Asp61Tyr	p.Pro425Leu	p.Leu569Val	nd
5	CMML 2	47, XX, +8 [20]	Tri 8	no	nd	p.Ala72Thr	Splicing defect	no	nd
6	CMML 2	46, XY [20]	3p23 loss (GLB1, CRTAP)	no	nd	no	p.Arg166X	no	nd
7	CMML I	46, XX [20]	normal-like	no	nd	no	no	no	nd
12	CMML I	47, XX, +8 [20]	Tri 8, 7q11 loss (CALN1)	N- p.Gly12Asp	nd	no	p.Tyr377LeufsX223	no	nd
13	CMML I	46, XY [20]	normal-like	no	nd	no	no	no	nd
15	CMML I	46, XY [20]	normal-like	no	nd	no	p.Gly50GlnfsX4	no	nd
51	CMML I	46, XY [20]	normal-like	no	nd	no	no	no	no
72	CMML I	46, XY [20]	7p21 gain (AHR)	no	nd	no	no	no	no
78	CMML I	45, X, -X?c [20]	X loss	N- p.Gly12Asp	nd	no	no	no	no
79	CMML I	46, XY [20]	normal-like	K- p.Gly12Ser	p. =	no	no	no	no
2	CMML I	46, XY [20]	normal-like	nd	nd	no	no	no	nd
95	CMML I	46, XX [20]	normal-like	no	nd	no	no	no	no
75	CMML I	46, XY [20]	normal-like	no	nd	no	no	no	no
89	CMML I	46, XY [20]	normal-like	K- p.Ala146Val	nd	no	no	no	no
3	CMML I	46, XY, del(20)(q11q13) [20]	nd	no	nd	no	p.Arg166X	no	nd
38	CMML I	46, XY [20]	normal-like	no	nd	no	no	no	no
52	CMML 2	46, XX, inv(11)(p15q22) [20]	normal-like	no	nd	no	no	no	no

Table 1: Molecular features of the 30 studied CMML (Continued)

90	CMML 2	46, XX, t(1;3)(p36;q21) [20]	normal-like	no	nd	no	p. =	no	no
8	CMML 2	46, XY [20]	normal-like	no	nd	no	no	no	nd
25	CMML 1	46, XY [20]	normal-like	no	nd	no	p.Leu56Ser	no	nd
63	CMML 2	46, XY [20]	normal-like	no	nd	no	no	no	no
74	CMML 1	46, XY, del(20)(q11q13) [20]	20q11-q13 loss, 13q14 loss (RBI)	no	nd	no	no	no	no
87	CMML 1	46, XY [20]	normal-like	no	nd	no	p.Arg320X	no	no
34	AT-CMML	46, XX [20]	normal-like	no	nd	p.Gln510His	no	no	USP16_E1- RUNX1_E7
37	AT-CMML	46, XY, del(20)(q11q13) [13]/46, idem, -7, +mar [5]/46, idem, del(12)(p11-12p13) [5]	20q11-q13 loss, 7p loss, 7q11-q21 loss, 7q31-qter loss, 7q21 gain (CDK6)	no	nd	no	p.Arg166X	nd	No
80	AT-CMML	46, XY, del(9)(q21q34) [19]/ 46, XY [20]	9q21.11-q22.33 loss, 17q11 loss (NFI)	nd	no	no	no	no	No
88	AT-CMML	47, XY, +8 [11]/46, XY [9]	Tri 8, 21q21 losses (RUNX1)	no	nd	no	no	no	USP16_E1- RUNX1_E5
96	AT-CMML	46, XY, del(20)(q11q13), +mar [18]	20q11-q13 loss	no	nd	nd	no	no	no
106	AT-CMML	46, XY [20]	7 loss, 8q24 loss (MYC)	no	nd	nd	no	no	no

CMMLs are classified by a double line as in Additional file 1.

CMML: chronic myelomonocytic leukemia.

AT-CMML: acute transformation of CMML in acute myeloid leukemia (all M4 FAB type).

Samples 3 and 37 are from the same patient.

In bold: myeloproliferative CMML.

nd: not done.

E: exon.

Tri: trisomy.

146 in coding exon 3, a rare type of *RAS* mutation that has been found in 4% colorectal cancers and two hematopoietic cell lines [13]. For patient 79 we determined that the mutation was present in a heterozygous state in the CD34-purified fraction of the BM cells, in the polynuclear neutrophils, monocytes and B lymphocytes but absent in the T cells (data not shown).

We examined the sequence of exons 3 and 13 of the *PTPN11* gene. Mutations were found in three cases. No mutation was found in exon 7 of *RAF1*, which is a hotspot for mutations in Noonan syndrome (NS) [14,15]. *SOS1* and *BRAF* were also sequenced in their most frequently mutated regions (exons 7–11 and kinase-encoding exons, respectively). One mutation was identified in *SOS1* in a region involved in NS [16], none in *BRAF*. No mutation was found in *SPRED1* [17].

The *NF1* gene was analyzed for mutations in cases 79 and 80. A silent, so far unreported point mutation (c.2178G>C) was found in case 79 (Table 1). The deletion of an *RB1* allele was confirmed by sequencing in case 74 and the remaining *RB1* allele was normal. There was no *JAK2* p.Val617Phe mutant in our panel of CMML cases.

Mutations were found in the *RUNX1* gene in 10 patients (30%). Mutation in case 90 is predicted to induce neither amino acid change nor splicing effect and thus was not considered as functionally deleterious. The nine other nucleotide variations would result in truncated or mutant proteins. *RUNX1* mutations are described in Figures 2 and 3.

Finally, no mutation was found in the *STK11/LKB1* and *SYK* kinase genes.

A novel, cryptic rearrangement of *RUNX1* following *inv(21q)*

The aCGH profile of case 88 showed two losses at 21q21.3 and q22.12 of about 1.04 Mb and 0.82 Mb, respectively (Figure 4A). They spanned the 3' part of *USP16*, including exons 2 to 19, *CCT8*, *BACH1* and *GRIK1* as well as the 5' part of *RUNX1* (including exons 1 to 4), respectively. We hypothesized that such a peculiar pattern could be due to a cryptic *inv(21)(q21q22)* associated with a microdeletion at one of the breakpoints. Given the features and orientation of the various potentially-involved genes, we surmise that a fusion could involve *RUNX1* and *USP16* (encoding a de-ubiquitinating enzyme). This was confirmed by nested PCR amplification of reverse-transcribed RNA from the patient's BM cells, which detected a 245 bp-long *USP16-RUNX1* transcript (Figure 4B). No reciprocal transcript was detected. Sequence analysis showed that the result of the inversion/fusion generated a chimeric *USP16-RUNX1* transcript. The break/fusion was not

present in the germline since we did not find the *USP16-RUNX1* transcript in buccal smear cells of the patient. The *USP16-RUNX1* gene fuses exon 1 of *USP16* to exon 5 of *RUNX1* thus not preserving the canonical ATG codons. The chimeric transcript exhibited several stop codons in its 5' part but the presence of multiple ATG codons through exons 5 to 7 of *RUNX1* sequence could be used as new start codons and generate putative truncated *RUNX1* proteins. A similar *USP16-RUNX1* fusion (without microdeletion) was found in CMML 34 (Table 1). In the two cases, the *USP16-RUNX1* fusion transcripts did not have an open reading frame using the canonical start codons of *USP16* or *RUNX1* (Figure 5). According to the SMART program <http://smart.embl-heidelberg.de/>, functional domains (i.e. RUNT and RUNXI [for RUNX Inhibitor domain], as defined by PFAM accession numbers PF00853 and PF08504, respectively) should disappear in such putative truncated *RUNX1* proteins. RUNT and RUNXI domains are encoded mainly by exons 3 to 5 and exon 8, respectively (Figure 3). The partial conservation of *RUNX1* transcript sequence (exons 5 to 8) and a new folding could explain conformational changes and the absence of RUNT and RUNXI domains.

In total, *RUNX1* was altered by mutation (9) or break (2) in 11 patients (8 CMMLs and 3 AT-CMMLs) (Table 2).

Unsurprisingly, the 11q inversion in case 52 and the balanced t(1;3)(p36;q21) in case 90 escaped aCGH detection. The 11q inversion was probably a case of *NUP98-DDX10* fusion [18] and the t(1;3) a case of *PRDM16/MEL1-RPN1* fusion [19].

Different alterations in MP- and MD-CMML

Excluding the 6 AT-CMMLs, *RAS* and *PTPN11* mutations were found in 6 of the 13 MP-CMMLs (~46%) whereas no such mutation was found in the 11 MD-CMMLs (Table 2). In contrast, *RUNX1* mutations occurred in both MP- (5 cases) or MD-CMML (3 cases).

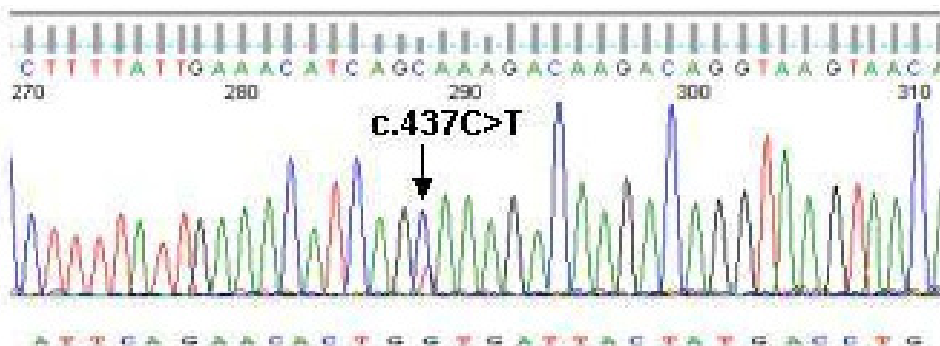
Discussion

We have established the first high resolution genome profiling of CMML and found a high frequency of *RAS* and *RUNX* gene alterations.

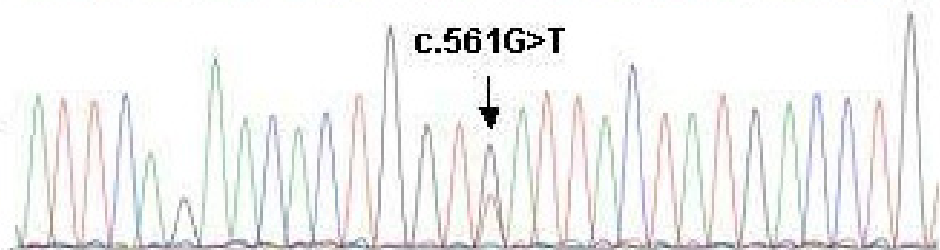
CMML and the *RAS* pathway

In the majority of cases the aCGH profiles did not show any alteration. This suggests that rearrangements and copy number aberrations are not prominent in CMML and that aCGH is only in part suited for obtaining further insight into the pathogenesis of this disease. However, in a small proportion of the cases aCGH was informative, pointing to known tumor suppressor genes such as *NF1* and *RB1*. However, neither gene was mutated in the remaining allele. Deletion of *NF1* was particularly interesting since it

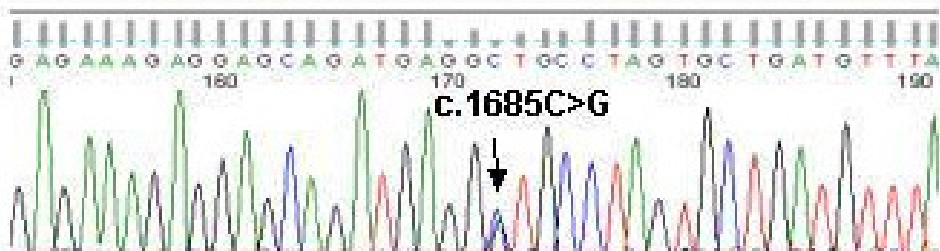
Case 89
KRAS p.Ala146Val



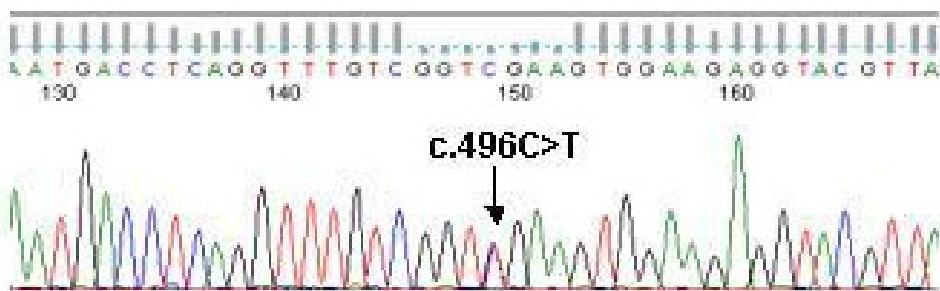
Case 1
PTPN11 p.Asp61Tyr



Case 1
SOS1 p.Leu569Val



Case 6
RUNX1 p.Arg166X



Case 25
RUNX1 p.Leu56Ser

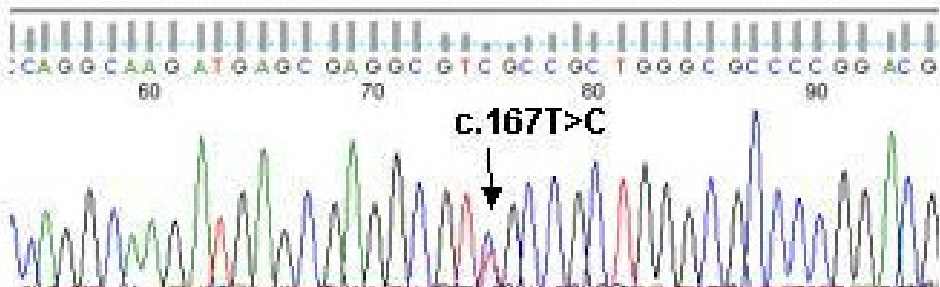


Figure 2
Mutation of RAS, PTPN11 and RUNX1 genes in CMML. Examples of mutations in candidate genes. From top to bottom, sequence of the mutated *KRAS*, *PTPN11*, *SOS1* and *RUNX1* alleles, demonstrating base change in the forward sequence at the position indicated by an arrow. The corresponding sequence is shown above. Primers and conditions used are described in additional file 2.

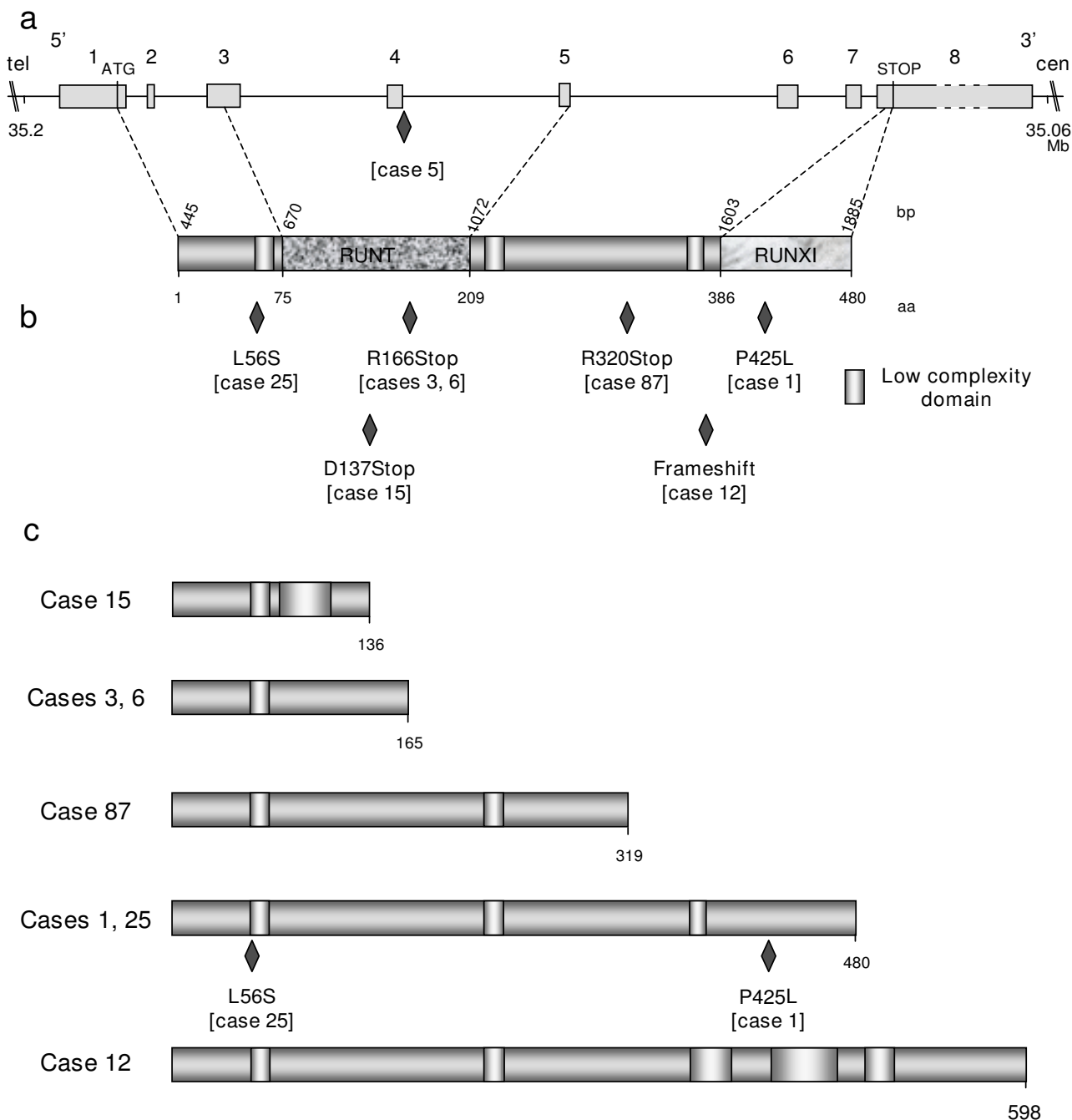


Figure 3

Characterization of *RUNX1* mutations in CMML patients. A: Genomic organization of *RUNX1* gene at 21q22.12 and *RUNX1* protein. Functional (i.e. RUNT and RUNXI [for RUNX Inhibitor domain], as defined by PFAM accession numbers PF00853 and PF08504, respectively) and motifs of the *RUNX1* protein were positioned according to the SMART program <http://smart.embl-heidelberg.de/>. Nucleotide (cDNA level) and deduced aminoacid sequences of the *RUNX1* protein are positioned above and below the corresponding protein, respectively. The genomic *RUNX1* sequence of CMML 5 exhibited a mutation in the consensus splicing sequence of intron 3. B: Mutations of *RUNX1*. All mutations but one introduced an aberrant stop codon (cases 3, 6, 12, 15 and 87). Two missense mutations (cases 1 and 25) were also observed. The mutations are located with respect to the modified aminoacid of the *RUNX1* protein. C: Representation of putative mutated *RUNX1* proteins. According to the SMART program, all putative modified proteins have lost their RUNT and RUNXI domains.

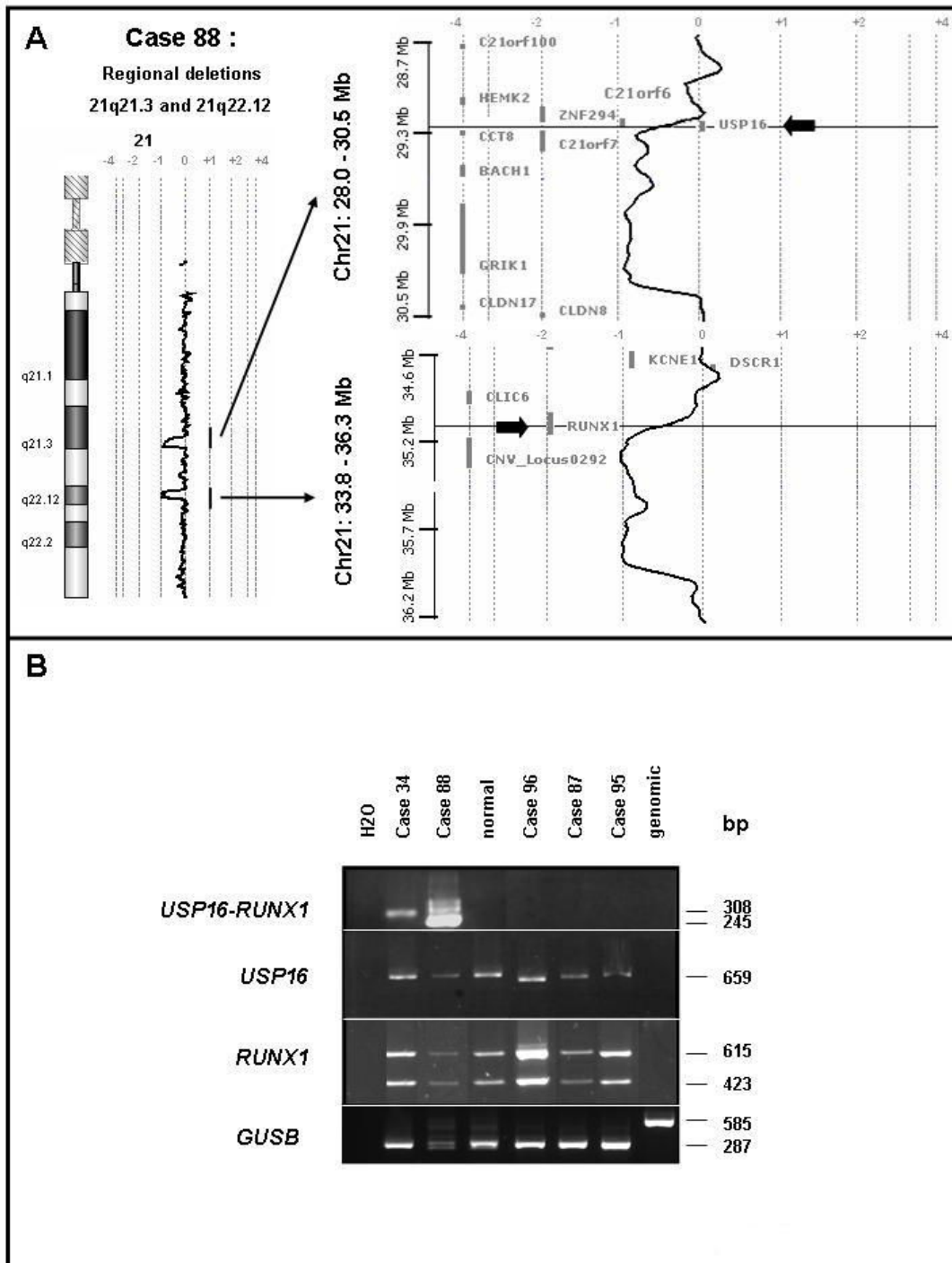


Figure 4
Genomic rearrangements involve *USP16* and *RUNX1* genes in CMML patients. A: CMML 88 aCGH profile of chromosome 21 shows regional deletions in 21q21.3 and 21q22.12. Arrows point to *USP16* and *RUNX1* genes targeted by transition profiles located in these respective regions. This suggests that potential gene breaks involve *USP16* and *RUNX1*. B: PCR characterization of *USP16-RUNX1* fusions in CMML. *USP16*, *RUNX1* and *USP16-RUNX1* transcripts were detected in the BM cells of the patients. The size of amplified products is shown on the right. The existence of alternatively spliced *RUNX1* products could explain the various sizes observed for *USP16-RUNX1* and *RUNX1* transcripts. cDNA of normal lymphocytes were used as control. Primers specific for the human *GUSB* transcript were used for control of the RT-PCR quality control.

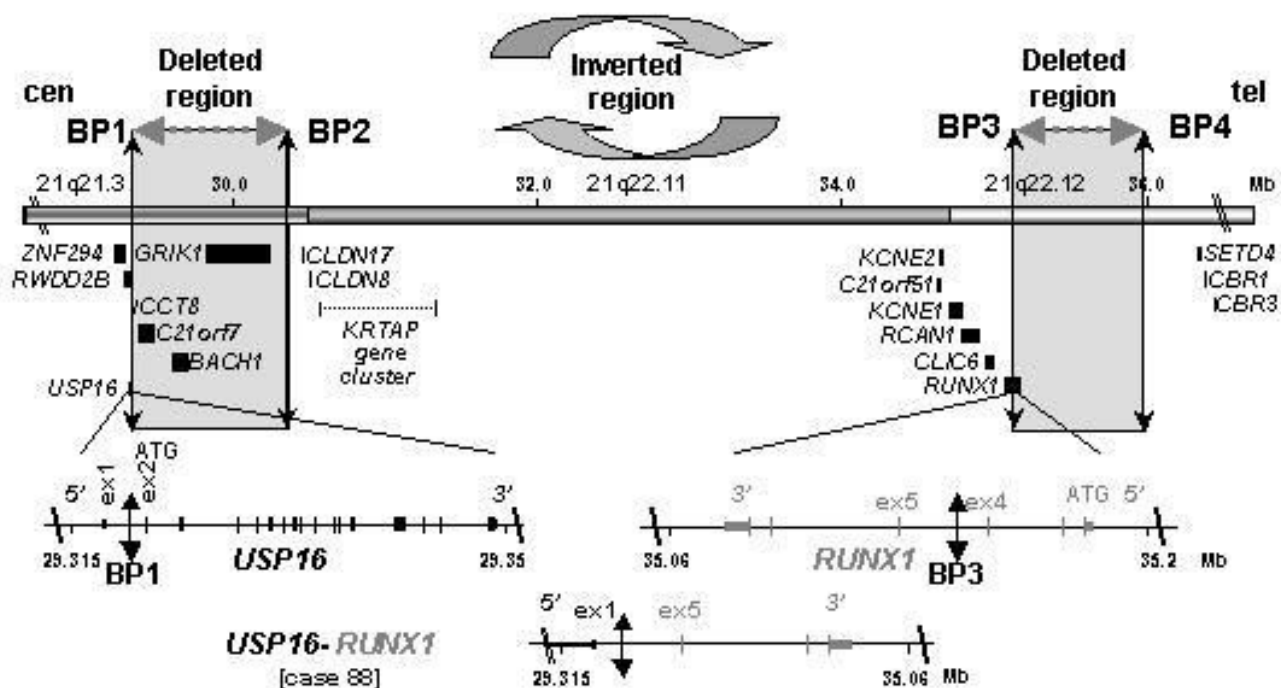


Figure 5
USP16-RUNX1 rearrangement in CMML 88. Organization of chromosomal region 21q21.3-q22.12 with the location of the breakpoints (BP) and deleted regions from centromere (cen) to telomere (tel). Mb scale of the corresponding 21q21.3, 21q22.11 and 21q22.12 regions corresponds to cytogenetic bands. Only genes flanking affected regions are reported on the figure. Breakpoints BP1 and BP3 targeting *USP16* and *RUNX1* are associated with deletions defined by intervals [BP1-BP2] and [BP3-BP4]. The *USP16-RUNX1* gene fusion is explained by the inversion of the central interval [BP2-BP3]. ATG codons are in exon 2 (ex 2) and exon 1 (ex 1) of *USP16* and *RUNX1*, respectively.

led us to suspect an alteration of the RAS pathway and a similarity with juvenile myelomonocytic leukemia (JMML). JMML is a chronic myelomonocytic disease that occurs early in life, often on a genetic background of NS, and neurofibromatosis type 1. [20-22]. Half of NS are caused by germline mutations in the *PTPN11* gene, which encodes a RAS pathway-regulating phosphatase. Germ-

line mutations in *KRAS*, *SOS1*, *RAF1*, *BRAF* and other genes of the RAS pathway account for the other NS cases [14,15,20,23]. Syndromes caused by a hyperactivation of the RAS pathway also include Costello, cardio-facio-cutaneous (CFC), hereditary gingival fibromatosis and LEOPARD syndromes, and are collectively called neuro-cardio-facial-cutaneous (NCFC) syndromes [24].

Table 2: Summary of results.

	All CMMLs (N = 30)	All non AT-CMMLs (N = 24)	MP-CMMLs (N = 13)	MD-CMMLs (N = 11)	AT-CMMLs (N = 6)	<i>RUNX1</i> alteration
Normal-like	17	16	6	10	1	7
Trisomy 8	3	2	2	0	1	3
Del20q	4	2	1	1	2	3
RAS pathway mutation	7	6	6	0	1	4
<i>RUNX1</i> alteration	11	8	5	3	3	11
<i>RUNX1</i> mutation	9	8	5	3	1	9
<i>USP16-RUNX1</i>	2	0	0	0	2	2

RAS pathway mutations include point mutations in *KRAS*, *NRAS* and *PTPN11*. *RUNX1* alterations include *RUNX1* mutations and breaks. Two cases (1 AT and 1 non-AT) are from the same patient.

We thus sequenced genes coding for proteins involved in the RAS signaling pathway and a RAS mutation was found in four cases (~14%), including a codon 146 mutation in *KRAS*. In a recent study of CMML, mutations of *KRAS* and *NRAS* genes were found in 9 patients out of 32 [25]; two of the six *KRAS* mutations were in codon 146. It is thus possible that mutation at this site is more frequent than expected, at least in hematopoietic diseases. Germline mutations of *KRAS* have been found in NCFC syndromes [24,26]. Germline RAS mutations induce precursor lesions and especially myeloproliferative disorders that resemble JMML and CMML [27-29]. In patient 79 the *KRAS* p.Gly12Ser substitution was present in the myeloid and B lymphoid lineages but not in T cells. We found mutations of *PTPN11* exon 3 in 2 cases and exon 13 in one case (other exons were not screened). Somatic mutations of *PTPN11* occur in approximately one-third of JMMLs but are less frequent in CMMLs [30,31]. Our combined results indicate that mutations in the RAS pathway occurred in at least one-fourth of CMML cases. No *HRAS* mutation was detected, in agreement with the absence of hematological manifestations in *HRAS*-linked Costello syndrome. CMML (at least MP-CMML) shares molecular features with JMML, i.e. similar non-specific alterations of chromosomes 7, 8 and 20, gene fusions [32] and alterations of genes suggesting activation of the RAS pathway. Inhibitors of the RAS pathway might be efficient in treating CMML [33,34].

CMML and *RUNX1* alterations

Two cases showed a break in *RUNX1* due to an inversion of chromosomal region 21q21-22. *RUNX1* encodes the DNA-binding, alpha subunit of the core binding factor (CBF) and is viewed as a tumor suppressor gene whose haplo-insufficiency or dominant-negative mutations play a role in leukemogenesis [35,36]. The gene is also frequently involved in translocations, with more than 15 different partners [37,38]. CBF β is the β subunit of the heterodimeric CBF factor. CBF regulates hematopoietic stem cell behavior and is essential for definitive hematopoiesis [39]. We show here that *RUNX1*, already known as a major translocation breakpoint, may even be more frequently altered than thought. Indeed, the 21q inversion is not detectable by karyotyping and, if not for the interstitial microdeletion, would not be detected by aCGH.

RUNX1 mutations were frequent in our series of CMML. In contrast to RAS pathway mutations, mutations of *RUNX1* have been reported unfrequently in CMML and JMML, perhaps due to the experimental approach [40]. Overall, we found alterations of *RUNX1* in roughly half of the non-acutely transformed cases. They resulted in various truncated or aberrant proteins that could act as dominant-negative isoforms or result in haplo-insufficiency.

Case 12 shows a deletion of *CALN1*, encoding calneuron 1, a calmodulin-like protein. Calmodulin regulates calcineurin, which is recruited by *RUNX1* to regulate granulocyte-macrophage colony-stimulating factor [41]. Finally, *CDK6*, whose gene is amplified in case 3, inhibits *RUNX1* activity [42]. Noticeably, amplification of *CDK6* has been recently described in lymphoma [43]. Thus, alteration of *RUNX1* function may occur frequently and by different mechanisms in CMML.

Other alterations

Patient 52 had been treated for breast cancer and the CMML may be due to a therapy-related pericentric inversion of chromosome 11 with *NUP98-DDX10* fusion. CMML 90 may be due to a fusion between *PDRM16* (*EVI1*-like) and *RPN1*. Such fusion is found in MDS and AML-M4 [44].

Not surprisingly, CMML shares molecular features with MDS and AML, especially therapy-related diseases, including loss or partial deletions of chromosome 7, rearrangement of the *RUNX1* gene, mutations of RAS and *PTPN11* [45].

Cooperative and exclusive alterations

RAS pathway mutations and *RUNX1* alterations were not mutually exclusive. RAS mutations, *PTPN11* mutations and *NF1* deletion were mutually exclusive. However, in case 1, mutations of *PTPN11* and *SOS1* were found. The two mutations could synergize but the *SOS1* mutation has never been reported and its functional relevance remains unknown.

Myeloproliferative vs myelodysplastic CMML

Six RAS pathway alterations were found in 13 MP-CMMLs but none in 11 MD-CMMLs ($p = 0.016$, Fisher exact test). An even higher proportion of MP-CMMLs may be due to mutation in the RAS pathway because other cases could be due to mutations occurring elsewhere in these genes or in other genes of the RAS pathway. This suggests that MP- and MD-CMMLs could develop along two different oncogenic pathways, specific of two distinct diseases. This hypothesis reinforces our previous observation on CMML gene expression [8]. However, in a recent study RAS mutations were distributed independently of the white blood cell count [25].

RB1 deletion, *RUNX1* mutation and *inv(11)(p15q22)* were the only identified alterations in our series of MD-CMML. These alterations are neither specific of CMML nor of MD-CMML ($p =$ non significant) since we found several (5/13) alterations of *RUNX1* in MP-CMMLs. Thus, the molecular biology of MD-CMML remains unclear. Yet, we now know that MD-CMML shares *RUNX1* alteration with other diseases. It is tempting to speculate that *RUNX1*

alterations are responsible for the dysplasia whereas RAS pathway mutations are responsible for the myeloproliferation. In terms of treatment, CMMLs with a RAS pathway mutation may benefit from drugs able to target the RAS/RAF/MAPK pathway [33,34] (e.g. sorafenib), while all CMMLs may benefit from therapy restoring RUNX function.

Conclusion

We have identified two important features of the molecular biology of CMML: i) – RAS pathway mutations are involved, at least, in roughly half of MP-CMML; ii) – *RUNX1* alterations are frequent in CMML; they may result from mutations or chromosome rearrangements. Importantly, RAS and *RUNX1* alterations are not exclusive, showing that, already, two oncogenic hits may coexist at this chronic stage.

Competing interests

The authors declare that they have no competing interests.

Authors' contributions

VGB, CA, DS, NV and MJM selected the cases and provided and reviewed the clinical and biological data. VT, NA, VR, SP, CH, MBA and SO generated the sequencing data. JA, VT and MC generated the aCGH data. JA discovered and studied the USP16-*RUNX1* fusion. VGB, MJM, DB and MC supervised the study and wrote the manuscript. All authors approved the study and the manuscript.

Additional material

Additional File 1

Clinical and hematological features of the studied CMMLs. This table provides details on disease and patients. CMMLs are classified by a double line according to antecedents. Samples 3 and 37 are from the same patient. CMML: chronic myelomonocytic leukemia. In bold: myeloproliferative CMML and corresponding WBC. AT-CMML(AML-M4): acute transformation of CMML in acute myeloid leukemia of M4 FAB type. MDS: myelodysplastic syndromes. RARS: refractory anemia with ring sideroblasts. EPO: erythropoietin. WBC: white blood cell count. TA: therapeutic abstention. DGP: dysgranulopoiesis, DMK: dysmegakaryocytopenia, DEP: dyserythropoiesis. 2, 95, 75: hematological malignancies were concomitant of the diagnosis of CMML. 8: thrombopenia with a diagnosis of MDS (not done in our Institute). Apparition of anemia 2 weeks before the sampling and then treated with EPO. Variable monocytosis around 1.2 G/L but unlikely below 1 G/L at the time of sampling. 25*: persistent and stable monocytosis since June 2006 (1.2 G/L) but unlikely below 1 G/L at the time of sampling. 63*: mild anemia and thrombopenia with a diagnosis of MDS (not done in our Institute) and then under surveillance. 74*: treated for AML (not in our Institute) in 1992 (chemotherapy) and relapse (AML-M5) in our Institute in 2005 (chemotherapy). The cytological aspect of the bone marrow in January 2007 was CMML type 2. 34*: because of the important bone marrow dysplasia and the important cellularity the diagnosis of an acute phase of CMML was made. 80*: antecedent of monocytosis non explored. 88*: thrombopenia since 2005 and diagnosis of CMML (2006) made out of our Institute. 106*: stable monocytosis since February 2000. One sister with breast cancer. One brother with head and neck cancer and her mother with colon cancer (deceased).*

Click here for file

[<http://www.biomedcentral.com/content/supplementary/1471-2407-8-299-S1.xls>]

Additional File 2

Conditions of DNA sequencing used in this study for various genes. the table provides information (primers, PCR conditions) on sequence experiments conducted in this study.

Click here for file

[<http://www.biomedcentral.com/content/supplementary/1471-2407-8-299-S2.pdf>]

Additional File 3

*Primers used for PCR detection of RUNX1 alteration. The table provides information of primers used to detect USP16-*RUNX1* fusion.*

Click here for file

[<http://www.biomedcentral.com/content/supplementary/1471-2407-8-299-S3.doc>]

Acknowledgements

We are grateful to the patients who participated in this study. The work has been supported by Inserm, Institut Paoli-Calmettes, and grants from Institut National du Cancer (PHRC 2005 n° 24–33, NV), Caisse Primaire d'Assurance Maladie des Professions Libérales de Province (2006, MC), Association pour la Recherche contre le Cancer (ARC Sud 2007, DB) and Fondation de France (comité Leucémie, 2007, DB).

References

- Vardiman JW, Harris NL, Brunning RD: **The world health classification (WHO) of myeloid neoplasms.** *Blood* 2002, **100**:2292-2302.
- Bennett JM, Catovsky D, Daniel MT, Flandrin G, Galton DA, Gralnick H, Sultan C, Cox C: **The chronic myeloid leukaemias: guidelines for distinguishing chronic granulocytic, atypical chronic myeloid, and chronic myelomonocytic leukaemia. Proposals by the French-American-British Cooperative Leukaemia Group.** *Br J Haematol* 1994, **84**:746-754.
- Germing U, Gattermann N, Minning H, Heyll A, Aul C: **Problems in the classification of CMML-dysplastic versus proliferative type.** *Leuk Res* 1998, **22**:871-878.
- Nosslinger T, Reisner R, Grüner H, Tüchler H, Nowotny H, Pittermann E, Pfeilstöcker M: **Dysplastic versus proliferative CMML—a retrospective analysis of 91 patients from a single institution.** *Leuk Res* 2001, **25**:741-747.
- Gonzalez-Medina IB, Torrequebrada A, Lopez A, Vallespi T, Masague I: **Two groups of chronic myelomonocytic leukaemia: myelodysplastic and myeloproliferative. Prognostic implications in a series of a single center.** *Leuk Res* 2002, **26**:821-824.
- Onida F: **Pronostic factors in chronic myelomonocytic leukemia: a retrospective analysis of 213 patients.** *Blood* 2002, **99**:840-849.
- Germing U, Strupp C, Knipp S, Kuendgen A, Giagounidis A, Hildebrandt B, Aul C, Haas R, Gattermann N, Bennett JM: **Chronic myelomonocytic leukemia in the light of the WHO proposals.** *Haematologica* 2007, **92**:974-977.
- Gelsi-Boyer V, Cervera N, Bertucci F, Trouplin V, Remy V, Olschwang S, Chaffanet M, Vey N, Mozziconacci MJ, Birnbaum D: **Gene expression profiling separates chronic myelomonocytic leukemia in two molecular subtypes.** *Leukemia* 2007, **21**:2359-2362.
- Etienne A, Carbuca N, Adélaide J, Bekhouche I, Rémy V, Sohn C, Sainty D, Gastaut JA, Olschwang S, Birnbaum D, Mozziconacci MJ, Chaffanet M: **Rearrangements involving 12q in myeloproliferative disorders: possible role of HMGA2 and SOCS2 genes.** *Cancer Genet Cytogenet* 2007, **176**:80-88.
- Adélaide J, Finetti P, Bekhouche I, Repellini L, Geneix J, Sircoulomb F, Charafe-Jauffret E, Cervera N, Desplans J, Parzy D, Schoenmakers E, Viens P, Jacquemier J, Birnbaum D, Bertucci F, Chaffanet M: **Integrated profiling of basal and luminal breast cancers.** *Cancer Res* 2007, **67**:11565-11575.
- Barrett MT, Scheffer A, Ben-Dor A, Sampas N, Lipson D, Kincaid R, Tsang P, Curry B, Baird K, Meltzer PS, Yakhini Z, Bruhn L, Laderman S: **Comparative genomic hybridization using oligonucleotide microarrays and total genomic DNA.** *Proc Natl Acad Sci USA* 2004, **101**:17765-17770.
- Murati A, Adélaide J, Popovici C, Mozziconacci MJ, Arnoulet C, Lafage-Pochitaloff M, Sainty D, Birnbaum D, Chaffanet M: **A further case of acute myelomonocytic leukemia with inv(8) chromosomal rearrangement and MOZ-NCOA2 gene fusion.** *Int J Mol Med* 2003, **12**:423-428.
- Edkins S, O'Meara S, Parker A, Stevens C, Reis M, Jones S, Greenman C, Davies H, Dalglish G, Forbes S, Hunter C, Smith R, Stephens P, Goldstraw P, Nicholson A, Chan TL, Velculescu VE, Yuen ST, Leung SY, Stratton MR, Futreal PA: **Recurrent KRAS codon 146 mutations in human colorectal cancer.** *Cancer Biol Ther* 2006, **5**:928-932.
- Pandit B, Sarkozy A, Pennacchio LA, Carta C, Oishi K, Martinelli S, Pogna EA, Schackwitz W, Ustaszewska A, Landstrom A, Bos JM, Ommen SR, Esposito G, Lepri F, Faul C, Mundel P, López Siguero JP, Tenconi R, Selicorni A, Rossi C, Mazzanti L, Torrente I, Marino B, Digilio MC, Zampino G, Ackerman MJ, Dallapiccola B, Tartaglia M, Gelb BD: **Gain-of-function RAF1 mutations cause Noonan and LEOPARD syndromes with hypertrophic cardiomyopathy.** *Nat Genet* 2007, **39**:1007-1012.
- Razzaque MA, Nishizawa T, Komoike Y, Yagi H, Furutani M, Amo R, Kamisago M, Momma K, Katayama H, Nakagawa M, Fujiwara Y, Matsushima M, Mizuno K, Tokuyama M, Hirota H, Muneuchi J, Higashinakagawa T, Matsuoka R: **Germline gain-of-function mutations in RAF1 cause Noonan syndrome.** *Nat Genet* 2007, **39**:1013-1017.
- Roberts AE, Araki T, Swanson KD, Montgomery KT, Schiripo TA, Joshi VA, Li L, Yassin Y, Tamburino AM, Neel BG, Kucherlapati RS: **Germline gain-of-function mutations in SOS1 cause Noonan syndrome.** *Nat Genet* 2007, **39**:70-74.
- Brems H, Chmara M, Sahbatou M, Denayer E, Taniguchi K, Kato R, Somers R, Messiaen L, De Schepper S, Fryns JP, Cools J, Marynen P, Thomas G, Yoshimura A, Legius E: **Germline loss-of-function mutations in SPRED1 cause a neurofibromatosis 1-like phenotype.** *Nat Genet* 2007, **39**:1120-1126.
- Arai Y, Hosoda F, Kobayashi H, Arai K, Hayashi Y, Kamada N, Kaneko Y, Ohki M: **The inv(11)(p15q22) chromosome translocation of de novo and therapy-related myeloid malignancies results in fusion of the nucleoporin gene, NUP98, with the putative RNA helicase gene, DDX10.** *Blood* 1997, **89**:3936-3944.
- Mochizuki N, Shimizu S, Nagasawa T, Tanaka H, Taniwaki M, Yokota J, Morishita K: **A novel gene, MEL1, mapped to 1p36.3 is highly homologous to the MDS1/EV11 gene and is transcriptionally activated in t(1;3)(p36;q21)-positive leukemia cells.** *Blood* 2000, **96**:3209-3214.
- Tartaglia L, Gelb BD: **Noonan syndrome and related disorders: genetics and pathogenesis.** *Annu Rev Genomics Hum Genet* 2005, **6**:45-68.
- Ferner RE: **Neurofibromatosis 1.** *Eur J Human Genet* 2007, **15**:131-138.
- Lauchle JO, Braun BS, Loh ML, Shannon K: **Inherited predispositions and hyperactive Ras in myeloid leukemogenesis.** *Pediatr Blood Cancer* 2006, **46**:579-585.
- Schubbert S, Shannon K, Bollag G: **Hyperactive Ras in developmental disorders and cancer.** *Nat Rev Cancer* 2007, **4**:295-308.
- Bentires-Alj M, Kontaridis M, Neel BG: **Stops along the RAS pathway in human genetic disease.** *Nat Med* 2006, **12**:283-285.
- Tyner JW, Loriaux MM, Erickson H, Eide CA, Deininger J, Macpartlin M, Willis SG, Lange T, Druker BJ, Kovacsovic T, Maziarsz R, Gattermann N, Deininger MW: **High-throughput mutational screen of the tyrosine kinome in chronic myelomonocytic leukemia.** *Leukemia* 2008.
- Bentires-Alj M, Paez JG, David FS, Keilhack H, Halmos B, Naoki K, Maris JM, Richardson A, Bardelli A, Sugarbaker DJ, Richards WG, Du J, Girard L, Minna JD, Loh ML, Fisher DE, Velculescu VE, Vogelstein B, Meyerson M, Sellers WR, Neel BG: **Activating mutations of the noonan syndrome-associated SHP2/PTPNI1 gene in human solid tumors and adult acute myelogenous leukemia.** *Cancer Res* 2004, **15**:8816-8820.
- Tuveson DA, Shaw AT, Willis NA, Silver DP, Jackson EL, Chang S, Mercer KL, Grochow R, Hock H, Crowley D, Hingorani SR, Zaks T, King C, Jacobetz MA, Wang L, Bronson RT, Orkin SH, DePinho RA, Jacks T: **Endogenous oncogenic K-ras(G12D) stimulates proliferation and widespread neoplastic and developmental defects.** *Cancer Cell* 2004, **5**:375-387.
- Braun BS, Tuveson D, Kong N, Le DT, Rozmus J, Le Beau MM, Jacks TE, Shannon KM: **Somatic activation of oncogenic Kras in hematopoietic cells initiates a rapidly fatal myeloproliferative disorder.** *Proc Natl Acad Sci USA* 2004, **101**:597-602.
- Chan IT, Kutok J, Williams IR, Cohen S, Kelly L, Shigematsu H, Johnson L, Akashi K, Tuveson DA, Jacks T, Gilliland DG: **Expansion of the genotypic and phenotypic spectrum in patients with KRAS germline mutations.** *J Clin Invest* 2004, **113**:528-538.
- Kratz CP, Niemeyer CM, Castleberry RP, Cetin M, Bergsträsser E, Emanuel PD, Hasle H, Kardos G, Klein C, Kojima S, Stary J, Trebo M, Zecca M, Gelb BD, Tartaglia M, Loh ML: **The mutational spectrum of PTPNI1 in juvenile myelomonocytic leukemia and Noonan syndrome/myeloproliferative disease.** *Blood* 2005, **106**:2183-2185.
- Loh ML, Martinelli S, Cordeddu V, Reynolds MG, Vattikuti S, Lee CM, Wulfert M, Germing U, Haas P, Niemeyer C, Beran ME, Strom S, Lübbert M, Sorcini M, Estey EH, Gattermann N, Tartaglia M: **Acquired PTPNI1 mutations occur rarely in adult patients with myelodysplastic syndromes and chronic myelomonocytic leukemia.** *Leuk Res* 2005, **29**:459-462.
- Morerio C, Acquila M, Rosanda C, Rapella A, Dufour C, Locatelli F, Maserati E, Pasquali F, Panarello C: **HCMOGT-1 is a novel fusion partner to PDGFRB in juvenile myelomonocytic leukemia with t(5;17)(q33;p11.2).** *Cancer Res* 2004, **64**:2649-2651.
- Flotho C, Kratz C, Niemeyer CM: **Targeting RAS signaling pathways in juvenile myelomonocytic leukemia.** *Curr Drug Targets* 2007, **8**:715-725.
- Flotho C, Steinemann D, Mullighan CG, Neale G, Mayer K, Kratz CP, Schlegelberger B, Downing JR, Niemeyer CM: **Genome-wide single-nucleotide polymorphism analysis in juvenile myelomonocytic leukemia identifies uniparental disomy**

- surrounding the **NF1** locus in cases associated with neurofibromatosis but not in cases with mutant **RAS** or **PTPN11**. *Oncogene* 2007, **26**:5816-5821.
35. Song WJ, Sullivan MG, Legare RD, Hutchings S, Tan X, Kufrin D, Ratajczak J, Resende IC, Haworth C, Hock R, Loh M, Felix C, Roy DC, Busque L, Kurnit D, Willman C, Gewirtz AM, Speck NA, Bushweller JH, Li FP, Gardiner K, Poncz M, Maris JM, Gilliland DG: **Haploinsufficiency of CBFA2 causes familial thrombocytopenia with propensity to develop acute myelogenous leukaemia**. *Nat Genet* 1999, **23**:166-175.
 36. Imai Y, Kurokawa M, Izutsu K, Hangaishi A, Takeuchi K, Maki K, Ogawa S, Chiba S, Mitani K, Hirai H: **Mutations of the AML1 gene in myelodysplastic syndrome and their functional implications in leukemogenesis**. *Blood* 2000, **96**:3154-3160.
 37. Niebuhr B, Fischer M, Tager M, Cammenga J, Stocking C: **Gatekeeper function of the RUNX1 transcription factor in acute leukemia**. *Blood Cells Mol Dis* 2008, **40**:211-218.
 38. Mitelman F, Johansson B, Mertens F: **The impact of translocations and gene fusions on cancer causation**. *Nat Rev Cancer* 2007, **7**:233-245.
 39. Kurokawa M: **AML1/Runx1 as a versatile regulator of hematopoiesis: regulation of its function and a role in adult hematopoiesis**. *Int J Hematol* 2006, **84**:136-142.
 40. Osato M: **Point mutations in the RUNX1/AML1 gene: another actor in RUNX leukemia**. *Oncogene* 2004, **23**:4284-4296.
 41. Liu H, Holm M, Xie XQ, Wolf-Watz M, Grundstrom T: **AML1/Runx1 recruits calcineurin to regulate granulocyte macrophage colony-stimulating factor by Ets1 activation**. *J Biol Chem* 2004, **279**:29398-29408.
 42. Fujimoto T, Anderson K, Jacobsen SE, Nishikawa SI, Nerlov C: **Cdk6 blocks myeloid differentiation by interfering with Runx1 DNA binding and Runx1-C/EBPalpha interaction**. *EMBO J* 2007, **26**:2361-2370.
 43. Nagel S, Leich E, Quentmeier H, Meyer C, Kaufmann M, Drexler HG, Zettl A, Rosenwald A, MacLeod RA: **Amplification at 7q22 targets cyclin-dependent kinase 6 in T-cell lymphoma**. *Leukemia* 2008, **22**:387-392.
 44. Xinh PT, Tri NK, Nagao H, Nakazato H, Taketazu F, Fujisawa S, Yagasaki F, Chen YZ, Hayashi Y, Toyoda A, Hattori M, Sakaki Y, Tokunaga K, Sato Y: **Breakpoints at 1p36.3 in three MDS/AML(M4) patients with t(1;3)(p36;q21) occur in the first intron and in the 5' region of MEL1**. *Genes Chromosomes Cancer* 2003, **36**:313-316.
 45. Christiansen DH, Desta F, Andersen MK, Pedersen-Bjergaard J: **Mutations of the PTPN11 gene in therapy-related MDS and AML with rare balanced chromosome translocations**. *Genes Chromosome Cancer* 2007, **46**:517-521.

Pre-publication history

The pre-publication history for this paper can be accessed here:

<http://www.biomedcentral.com/1471-2407/8/299/prepub>

Publish with **BioMed Central** and every scientist can read your work free of charge

"BioMed Central will be the most significant development for disseminating the results of biomedical research in our lifetime."

Sir Paul Nurse, Cancer Research UK

Your research papers will be:

- available free of charge to the entire biomedical community
- peer reviewed and published immediately upon acceptance
- cited in PubMed and archived on PubMed Central
- yours — you keep the copyright

Submit your manuscript here:
http://www.biomedcentral.com/info/publishing_adv.asp

