

# Drought meets acid: three new genera in a dothidealean clade of extremotolerant fungi

L. Selbmann<sup>1\*</sup>, G.S. de Hoog<sup>2,3</sup>, L. Zucconi<sup>1</sup>, D. Isola<sup>1</sup>, S. Ruisi<sup>1</sup>, A.H.G. Gerrits van den Ende<sup>2</sup>, C. Ruibal<sup>2</sup>, F. De Leo<sup>4</sup>, C. Urzi<sup>4</sup> and S. Onofri<sup>1</sup>

<sup>1</sup>DECOS, Università degli Studi della Tuscia, Largo dell'Università, Viterbo, Italy; <sup>2</sup>CBS Fungal Biodiversity Centre, P.O. Box 85167, NL-3508 AD Utrecht, The Netherlands; <sup>3</sup>Institute for Biodiversity and Ecosystem Dynamics, University of Amsterdam, Kruislaan 315, NL-1098 SM Amsterdam, The Netherlands; <sup>4</sup>Dipartimento di Scienze Microbiologiche, Genetische e Molecolari, Università di Messina, Salita Sperone 31, I-98166 Messina, Italy

\*Correspondence: Laura Selbmann, selbmann@unitus.it

**Abstract:** Fungal strains isolated from rocks and lichens collected in the Antarctic ice-free area of the Victoria Land, one of the coldest and driest habitats on earth, were found in two phylogenetically isolated positions within the subclass *Dothideomycetidae*. They are here reported as new genera and species, *Recurvomyces mirabilis* gen. nov., sp. nov. and *Elasticomyces elasticus* gen. nov., sp. nov. The nearest neighbours within the clades were other rock-inhabiting fungi from dry environments, either cold or hot. Plant-associated *Mycosphaerella*-like species, known as invaders of leathery leaves in semi-arid climates, are also phylogenetically related with the new taxa. The clusters are also related to the halophilic species *Hortaea werneckii*, as well as to acidophilic fungi. One of the latter, able to grow at pH 0, is *Scytalidium acidophilum*, which is ascribed here to the newly validated genus *Acidomyces*. The ecological implications of this finding are discussed.

**Key words:** Acidophilic fungi, Antarctica, black fungi, extremotolerance, halophilic fungi, ITS, lichens, phylogeny, rock-inhabiting fungi, SSU, taxonomy.

**Taxonomic novelties:** *Recurvomyces* Selbmann & de Hoog, gen. nov.; *Recurvomyces mirabilis* Selbmann & de Hoog, sp. nov.; *Elasticomyces* Zucconi & Selbmann, gen. nov.; *Elasticomyces elasticus* Zucconi & Selbmann, sp. nov.; *Acidomyces* Selbmann, de Hoog & De Leo, gen. nov.; *Acidomyces acidophilus* (Sigler & J.W. Carmich.) Selbmann, de Hoog & De Leo, comb. nov.

## INTRODUCTION

Contrary to expectations, bare rocks in arid and semi-arid climates may harbour a bewildering biodiversity of black fungi. Many species have been reported from the Mediterranean basin (Sterflinger *et al.* 1997, Wollenzien *et al.* 1997, Bogomolova & Minter 2003, De Leo *et al.* 1999, 2003, Bills *et al.* 2004, Ruibal *et al.* 2005, Ruibal *et al.* 2008). These extremotolerant fungi live and even thrive on surfaces that are too harsh to support growth of competing microorganisms; they shelter in small depressions in the marble surface, called micropits (Sterflinger 1998). Similar extremotolerant fungi were discovered in the extremely cold and ice-free McMurdo Dry Valleys, a desert area in the Antarctic (Nienow & Friedmann 1993), where temperatures are only occasionally above zero, dropping to about  $-50$  °C in winter. Onofri *et al.* (1999) and Selbmann *et al.* (2005) even reported on the existence of possibly endemic genera, *Friedmanniomyces* Onofri and *Cryomyces* Selbmann, de Hoog, Mazzaglia, Friedmann & Onofri in these habitats, which apparently show active evolution under conditions of near-permanent frost and extreme dryness (Friedmann *et al.* 1987). These fungi may escape prohibitive environmental conditions by colonising air spaces in rocks, living in association with lichens and algae in cryptoendolithic communities (Friedmann & Ocampo 1976, Friedmann 1982).

In the present paper we describe three new fungal genera and species; their novelty is supported by molecular phylogeny, taking a clearly separate position within the *Dothideomycetidae*. One genus includes two strains isolated from rocks in the Antarctic desert, one strain from rocks collected in Monte Rosa in the Alps, Italy, and an

unidentified rock fungus from Puebla de la Sierra, Spain; the other genus includes three strains isolated from different thalli of Antarctic lichens, one from cryptoendolithic Antarctic communities and one from rocks collected in Aconcagua in the Argentinian Andes. In contrast to most rock-inhabiting black fungi, which are generally scarcely differentiated, they show peculiar and distinguished morphological traits.

Fungi may also be encountered in extremely acidic environments. Some are able to grow at pH values down to pH 0 (Starkey & Waksman 1943, Harrison *et al.* 1966, Gould *et al.* 1974, Ivarsson & Morita 1982, Gimmler *et al.* 2001). Sigler & Carmichael (1974) compared four strains from an acidic soil (pH 1.4–3.5) with the ones previously isolated by Starkey & Waksman (1943) and Ivarsson & Morita (1982), referring them to the genus *Scytalidium* Pesante on the basis of scarcely differentiated brown arthroconidia. Our SSU and ITS comparison proved these fungi also to be members of a clade within the *Dothideomycetidae*, amidst rock-inhabiting fungi from cold and semi-arid climates.

## MATERIALS AND METHODS

### Strains

Black fungi were isolated from rock samples harbouring a cryptoendolithic lichen-dominated community and from epilithic lichens collected in different locations of Northern and Southern Victoria Land, Antarctica, in the framework of the Italian expedition

Table 1. List of strains studied.

Species	Strain no.	Source	Geography	ITS	Reference
<i>Acidomyces acidophilum</i>	CBS 335.97	Acidophilic algae <i>Dunalilella acidophila</i> pH 1.0	Germany	AJ244237	Gimmler et al. 2001
<i>Acidomyces acidophilum</i> (deposited as <i>Scytalidium acidophilum</i> )	CBS 270.74 T (ATCC 26772; UAMH 3460; IMI 183518)	Soil near acidic elemental sulphur pile pH 1.1	Canada	-	Sigler & Carmichael 1974
<i>Acidomyces acidophilum</i> (deposited as <i>Botryomyces caespitosus</i> )	CBS 899.87	Pyrite ore acidic drainage pH 2.0	Germany	-	-
	dH 13081 = det 106/2003	2N Sulphuric acid pH 1	Danmark (supplied by GC Frisvad)	-	Starkey & Waksman 1943
	dH 11526 = det 237-1999	Volcanic soil	Iceland (supplied by S. Gross, Berlin)	-	-
	dH 12881 = det 142-AF1			-	-
<i>Acidomyces</i> sp.	dH 13119	Acidic industrial process water pH 1.5	Emmen, The Netherlands	-	-
<i>Batcheloromyces proteae</i>	CBS 110696; CPC 1518	<i>Protea cynaroides</i>	South Africa	-	Crous et al. 2007
<i>Capnobotryella renispora</i>	CBS 214.90 T (CBS 176.88; IAM 13014; JCM 6932)	<i>Capnobotrys neessii</i>	Japan	-	-
<i>Catenulostroma abietis</i>	CBS 290.90	Man, skin lesion	The Netherland	AY128698	Crous et al. 2007
	CBS 145.97 (dH 15396)	sandstone of cathedral	Zeitz, Germany	AY128699	Butin et al. 1996
	CBS 300.81	<i>Juniperus communis</i> (Cupressaceae), needle	Graubünden, Grösch, Switzerland	AJ244264	-
	CBS 279.86		Kiel, Germany	-	Butin et al. 1996; Sterflinger et al. 1999
	dH 12687 = det 396/2001	Painted wall	Sweeden	-	-
	TRN 128	Limestone	Mallorca	AY559363	-
	dH 12697 = det 373/2001 RMF N113	Desert soil	Namibia	-	-
	dH 13593	See snail	Italy	-	-
	CBS 618.84	<i>Ilex</i> sp. leaf	Germany	AY128696	-
<i>Catenulostroma elginense</i>	CBS 118765 (TRN 127; dH 14531)	Limestone	Cala San Vincenc, Mallorca	AY559362	-
<i>Catenulostroma germanicum</i>	CBS 111030 (CPC 1958)	<i>Protea grandiceps</i>	South Africa	AY260093	Crous et al. 2007
<i>Catenulostroma macowanii</i>	CBS 539.88	Stone	Germany, former West-Germany	EU019253	Crous et al. 2007
	CBS 110756 (CPC 1872)	<i>Protea nitida</i>	South Africa	-	Crous et al. 2007
	CPC 1488			-	-
<i>Elasticomyces elasticus</i>	CBS 122538 (CCFEE 5313)	<i>Lecanora fuscobrunnea</i>	Kay Island, Northern Victoria Land, Antarctica	FJ415474	-
	CBS 122539 (CCFEE 5319)	<i>Lecanora</i> sp.	Inexpressible Island, Northern Victoria Land, Antarctica	FJ415475	-
	CBS 122540 (CCFEE 5320)	<i>Usnea antarctica</i>	Edmondson Point, Northern Victoria Land, Antarctica	FJ415476	-
	Da-004-06	Rock	Mount Aconcagua, Andes, Argentina	-	-
	CCFEE 5474 (D007-06)	Sandstone	Tarn Flat, Northern Victoria Land, Antarctica	-	-
<i>Friedmanniomyces endolithicus</i>	CBS 119423 (CCFEE 5208)	Sandstone	Northern Victoria Land, Antarctica	-	Selbmann et al. 2005
	CBS 119424 (CCFEE 5195)	Rock	Northern Victoria Land, Antarctica	-	Selbmann et al. 2005
	CBS 119429 (CCFEE 5193)	Sandstone	Timber Peak, Northern Victoria Land, Antarctica	-	Selbmann et al. 2005

Table 1. (Continued).

Species	Strain no.	Source	Geography	ITS	Reference
<i>Friedmanniomyces endolithicus</i>	CBS 119428 (CCFEE 5001)	Sandstone	Timber Peak, Northern Victoria Land, Antarctica	–	Selbmann <i>et al.</i> 2005
<i>Friedmanniomyces simplex</i>	CBS 116775 T (CCFEE 5184)	Sandstone	Battleship Promontory, Southern Victoria Land, Antarctica	DQ028271	Selbmann <i>et al.</i> 2005
<i>Hobsonia santessonii</i>		<i>Peltigera scabrosa</i>	Sweden	–	Sikaroodi <i>et al.</i> 2001
<i>Hortaea acidophila</i>	CBS 113389 (dH 11932)	Lignite pH 1.0	Germany	–	Hölker <i>et al.</i> 2004
<i>Hortaea werneckii</i> (preserved as <i>Pseudotaeniolina globosa</i> )	CBS 110352 (dH 12843 = VPCI 176)	Hollow tree	Sudan	–	–
<i>Hortaea werneckii</i>	dH 12322; Poonwan 13-44-08648	–	–	–	–
	CBS 373.92 (dH 15813)	Coast soil	La Palma, Spain	AJ238474	–
	CBS 359.66 (dH 15803)	Can, <i>linea nigra palmaris</i>	Suriname, Paramaribo	AJ244249	–
	CBS 122.32 (dH 15340)	Can, <i>linea nigra palmaris</i>	–	AJ238473	–
	CBS 117.90 (UAMH 4978; dH 15327)	Salted fish, <i>Osteoglossum bicirrhosum</i>	Brazil	AJ238472	Mok <i>et al.</i> 1981
	CBS 116.90 (ATCC 52681; UAMH 5389; dH 15311)	<i>Cantharus cantharus</i> , eye infection, black sea bream in aquarium	Italy	AJ238471	Todaro <i>et al.</i> 1983
	CBS 115.90 (UAMH 4985; dH 15303)	<i>Bufo granulatus</i> , kidney	Brazil	AJ238470	–
	CBS 111.31 (dH 15284)	Man, keratomycosis nigricans palmaris	Brazil	AJ238679	–
	CBS 100455 (MZKI B-675)	Coral, sea water	Croatia	AY128704	Zalar <i>et al.</i> 1999
	CBS 107.67 (dH 15206)	Man, <i>linea nigra</i>	Lisboa, Portugal	AJ238468	McGinnis 1979
	MZKI B-987	Ipersaline water	Spain	–	–
	dH 13416	Angelfish	–	–	–
	CBS 117931 (TRN 122, dH 14528)	Limestone	Cala San Vincenc, Mallorca	AY559357	–
	BMUJ00057	Patient's foot	China	–	–
<i>Mycocalcium victoriae</i>	CBS 109863	Soil, garden museum	Messina, Italy	AJ312123	–
<i>Mycosphaerella tasmaniensis</i>	CBS 114556 (CMW 14663; STE-U 1556)	<i>E. nitens</i>	Australia	DQ267592	–
	CBS 111687 (CMW 14780; STE-U 1555)	<i>E. nitens</i>	Australia	AY667578	–
<i>Pseudotaeniolina globosa</i>	CBS 110353 (dH 12840; det M1082002)	58-yr-old man, aorta, at autopsy	Würzburg, Germany	–	Kurzai <i>et al.</i> 2003
	CBS 109889 T (MC 769)	Church roof	Sicily, Italy	AY128700	De Leo <i>et al.</i> 2003
	CBS 113249 (dH 13060)	–	–	–	–
	CBS 303.84	Wood	Germany	AJ244268	de Hoog <i>et al.</i> 1999
	CBS 119923 (dH 16905)	Window	Japan	–	–
<i>Recurvomyces mirabilis</i>	CBS 119434 (CCFEE 5264; dH 14759)	Sandstone	Battleship Promontory, Southern Victoria Land, Antarctica	FJ415477	–
<i>Recurvomyces mirabilis</i>	CCFEE 5480 (D016-02)	Sandstone	Battleship Promontory, Southern Victoria Land, Antarctica	–	–
	CCFEE 5391	Rock	Mount Rosa, P.ta Indren, Alps, Italy	–	–
<i>Recurvomyces</i> sp.	CBS 117957 (TRN 491; dH 14566)	Quartzite	Puebla de la Sierra, Madrid, Spain	AY1843175	–
<i>Teratosphaeria cryptica</i>	TC 0.56	<i>E. globulus</i>	Australia	DQ665661	–

Table 1. (Continued).

Species	Strain no.	Source	Geography	ITS	Reference
<i>Teratosphaeria mexicana</i>	CBS 110502 (CMW 14461)	<i>E. globulus</i>	Manjimup, Darling View, Plantation, Western Australia	AY725558	Crous et al. 2007
<i>Teratosphaeria microspora</i>	CBS 110890 (CPC 1832)	<i>Protea leaf</i>	South Africa	AY260097	Taylor et al. 2003
<i>Teratosphaeria molleriana</i>	CBS 111164 (CMW 4940; STE-U 1214)	<i>E. globulus</i>	Abrantes, Portugal	AF309620	Crous et al. 2007
	CPC11842	<i>Eucalyptus</i> sp.	Portugal	DQ302989	Crous et al. 2006
	CPC11845	<i>Eucalyptus</i> sp.	Portugal	DQ302990	Crous et al. 2006
	CBS 116370 (CPC 10397)	<i>E. globulus</i>	Spain	AY725561	
	CPC 12056			DQ302991	Crous et al. 2006
<i>Teratosphaeria nubilosa</i>	CBS 116005 E (CMW 3282; CPC 937)	<i>E. globulus</i>	Austria	AY725572	Crous et al. 2007
	CPC 4661	<i>E. globulus</i>	Spain	AY725570	Crous et al. 2004
	CBS 111445 (CPC 4660)	<i>E. globulus</i>	Spain	AY725569	Crous et al. 2004
	CPC 3722	<i>E. globulus</i>	Spain	AY725568	Crous et al. 2004
	CPC 1099	<i>E. globulus</i>	Tanzania	AY725567	Crous et al. 2004
	CBS 111969 (CPC 1078)	<i>E. globulus</i>	Kenia	AY725563	Crous et al. 2004
	CPC 4663	<i>E. globulus</i>	Spain	AY725571	Crous et al. 2004
	CPC 11882	<i>E. globulus</i>	Portugal	DQ302999	Crous et al. 2006
	CPC 11723			-	
	CPC 11487	<i>E. globulus</i>	Spain	DQ302994	Crous et al. 2006
	CPC 11249	<i>E. globulus</i>	Spain	DQ302993	Crous et al. 2006
	CPC 11246	<i>E. globulus</i>	Spain	DQ302992	Crous et al. 2006
	CBS 114419 (CPC 10497)	<i>Eucalyptus globulus</i> (Myrtaceae)	New Zealand	AY725574	Crous et al. 2007
	TC 0.42	<i>E. globulus</i>	Australia	DQ665659	-
	TC 0.40	<i>E. globulus</i>	Australia	DQ665657	-
	TC 0.47	<i>E. globulus</i>	Australia	DQ665658	-
	CBS 116283 (CPC 10495)	<i>E. globulus</i>	New Zealand	AY725573	Crous et al. 2004
<i>Teratosphaeria nubilosa</i> (	CPC 11885	<i>E. globulus</i>	Portugal	DQ303000	Crous et al. 2006
<i>Teratosphaeria ohnowa</i>	CPC 1005	-	-	AF309605	Crous et al. 2001
	CBS 112896* (CMW 4937; CPC 1004 )	<i>E. globulus</i>	South Africa	AF309604	Crous et al. 2001
	CMW 9103	-	-	AF173299	-
	CBS 110949 (STE-U 1006)	<i>E. grandis</i> (Myrtaceae), leaves	Hazyview, South Africa	AF468881	-
	CBS 113313 H (CMW 14457)	<i>Eucalyptus</i> sp., leaves	Toledo, Spain	AY725575	-
	CPC 10840	<i>Eucalyptus</i> sp.	Spain	AY725580	-
				AY725581	Crous et al. 2004

Abbreviations used: ATCC – American Type Culture Collection, Manassas, VA, U.S.A.; CBS – Centraalbureau voor Schimmelcultures, Utrecht, The Netherlands; dH – GS de Hoog private collection, CBS, Utrecht, The Netherlands; CCFEE – Culture Collection of Fungi From Extreme Environments, Università degli Studi della Tuscia, Viterbo, Italy; CMW – Culture collection of the Forestry and Agricultural Biotechnology Institute (FABI), University of Pretoria, Pretoria, South Africa; CPC – Culture collection of P. Crous, housed at the CBS; IMI – International Mycological Institute, U.K.; MC – Collection of Istituto di Microbiologia di Messina, Italy; MZKI – Microbiological Culture Collection, National Institute of Chemistry, Ljubljana, Slovenia; STE-U – University of Stellenbosch fungal culture collection, Stellenbosch, South Africa; TRN – T. Ruibal private collection; UAMH – The University of Alberta Microfungus Collection and Herbarium, Edmonton, AB, Canada.

\*Ex-type cultures.

2003/2004, and from rock samples collected in Mount Aconcagua, Andes, Argentina, and Monte Rosa in the Alps, Italy, as reported in Table 1. The samples were collected using a sterile chisel, sterilised in the field before each sampling, and preserved in sterile bags at  $-20\text{ }^{\circ}\text{C}$ . To remove potential contaminants, rocks collected in other environments than Antarctica were washed 15 min in sterile physiological solution added with 0.1 % Tween 20 (Sigma - Aldrich, Munich, Germany) and rinsed 4 times with physiological solution to remove any trace of the detergent. Isolations from rocks were performed by powdering the samples and seeding fragments in triplicate Petri dishes filled with 2 % malt extract agar (MEA, AppliChem, GmbH) and dichloran-rose bengal agar (DRBC, Oxoid Ltd., Basingstoke, Hampshire, U.K.). Media were supplemented with chloramphenicol 100 ppm to prevent bacterial growth. Fungi from lichens were isolated as follows: small fragments of thalli were sterilised by washing with  $\text{H}_2\text{O}_2$  (8 %) for 5 min, washed with sterile deionised water to remove any trace of  $\text{H}_2\text{O}_2$  and finally seeded on MEA and DRBC. Plates were incubated at 5 and  $15\text{ }^{\circ}\text{C}$  and inspected every 15 d until no new colonies appeared. Colonies were transferred to MEA slants and incubated at  $15\text{ }^{\circ}\text{C}$ . Strains analysed for comparison are listed in Table 1; they were taken from reference collections of the Culture Collection of Fungi from Extreme Environments (CCFEE, Viterbo, Italy) and the Centraalbureau voor Schimmelcultures (CBS, Utrecht, The Netherlands), including a large set of strains sampled by P.W. Crous from plants with leathery leaves in a semi-arid climate.

## Morphology

Hyphal maturation and conidiogenesis were studied using both light and scanning electron microscope (SEM). Slide cultures were seeded onto MEA, incubated for 10 wk and mounted in lactic acid. Samples for SEM observations were prepared according to methods described by Onofri *et al.* (1980).

## DNA extraction and sequencing

DNA was extracted from mycelial fragments taken from 6-month-old MEA slants grown at  $10\text{ }^{\circ}\text{C}$ , using Nucleospin Plant kit (Macherey-Nagel, Düren, Germany) following the protocol optimised for fungi. PCR reactions were performed using BioMix (BioLine GmbH, Luckenwalde, Germany). In each  $25\text{ }\mu\text{L}$  reaction tube 5 pmol of each primer and 40 ng on template DNA were added. The amplification was carried out using MiniCycler™ (MJ Research, Waltham, Massachusetts, U.S.A.) equipped with a heated lid. The first denaturation step at  $95\text{ }^{\circ}\text{C}$  for 3 min was followed by: denaturation at  $95\text{ }^{\circ}\text{C}$  for 2 s, annealing at  $55\text{ }^{\circ}\text{C}$  for 30 s, extension at  $72\text{ }^{\circ}\text{C}$  for 30 s. The last three steps were repeated 35 times, with a last extension  $72\text{ }^{\circ}\text{C}$  for 5 min. The products were purified using Nucleospin Extract kit (Macherey-Nagel, Düren, Germany). Primers NS1, NS2, NS3, NS4, NS5, NS8, ITS1, ITS4 (White *et al.* 1990), SR10R (Bruns *et al.* 1992), ITS5, and ITS4a (Larena *et al.* 1999) were employed to amplify SSU and ITS rDNA portions. Sequencing reactions were performed according to the dideoxynucleotide method (Sanger *et al.* 1977) using the TF Big Dye Terminator 1,1 RR kit (Applied Biosystems). Fragments were analysed using an ABI 310 Genetic Analyser (Applied Biosystems). Sequence assembly was done using the software Chromas (v. 1.45 1996–1998, Conor McCarthy School of Health Science, Griffith University, Southport, Queensland, Australia).

## Alignment and tree reconstruction

SSU sequences were aligned with ARB beta-package (v. 22-08-2003, Ludwig *et al.* 2004; [www.mikro.biologie.tu-muenchen.de/pub/ARB](http://www.mikro.biologie.tu-muenchen.de/pub/ARB)). The SSU alignment spanned positions 141–2512, which corresponds to 1515 bp with reference to *Saccharomyces cerevisiae*. Trees based on SSU sequences were reconstructed with neighbour-joining in ARB.

ITS sequences were aligned iteratively with Ward's averaging (Van Ooyen 2002) in a research data base of black yeasts present at CBS using the BioNumerics package (Applied Maths, Kortrijk, Belgium). Due to gaps necessary for alignment, the ITS1 domain spanned 187 positions (real lengths 147–154 bp), the 5.8S gene 156 positions and the ITS2 domain 184 positions (real lengths 143–155 bp). The alignments were based on the positions 28–481, the initial and the final parts were cut off to compare fragments with the same length. Alignments were exported and the best-fit substitution model was determined using Modeltest MR<sub>AIC</sub>.pl 1.4.3 (Nylander 2004, program distributed by the author) estimated using PH<sub>YML</sub> (Guindon & Gascuel 2003) through hierarchical likelihood ratio tests. MR<sub>AIC</sub> calculates the Akaike Information Criterion (AIC), corrected Akaike Information Criterion (AIC<sub>c</sub>) and Bayesian Information Criterion (BIC); Akaike weights for nucleotide substitution model and model uncertainty. All 56 models implemented in Modeltest were evaluated. Phylogenetic trees were reconstructed by Maximum Likelihood, using TREEFINDER (Jobb *et al.* 2004) and the resulting tree was displayed using TREEVIEW v. 1.6.6 (Page 1996). The robustness of the phylogenetic inference was estimated using the bootstrap method (Felsenstein 1985) with 100 pseudoreplicates generated and analysed with TREEFINDER.

As alignment over the entire complex was highly ambiguous, an algorithm for tree reconstruction without alignment, the DNA-walk Divergence method (DNAWD, Licinio & Caligorne 2004; Caligorne *et al.* 2005) was used, involving the entire spacer region. DNA-walks are defined by incrementing walk steps for each nucleotide in the sequence (for example a positive step for purines, and negative for pyrimidines). It makes simultaneous comparisons of the three-dimensional walks (representing three composition skews): AG-TC, AC-TG, and AT-CG for each pair of sequences. One sequence slides against the other until the minimum squared walk difference is found, corresponding to a global alignment. This is then taken as a measure of their distance since statistically independent mutations and indels increase the mean square walk differences linearly. The resulting distance matrices are then fed into the Kitsch program of the Phylip package (v. 3.572c, Felsenstein 1996).

## Cultural preferences

Cultural characteristics and growth rates were recorded on Potato-Dextrose Agar (PDA), MEA, Czapek Dox Agar (CzA) and Oatmeal Agar (OA). Strain CBS 119434 was incubated at  $10\text{ }^{\circ}\text{C}$ , strains CBS 122538, 122539 and 122540 at  $20\text{ }^{\circ}\text{C}$  and strains CBS 899.87, CBS 335.97, dH 12881, dH 11526 and dH 13081 at  $25\text{ }^{\circ}\text{C}$ . The diameter of the colonies was recorded monthly. Tests were performed in triplicate.

## Temperature preferences

Temperature preferences for the strains CBS 119434, 122538, 122539 and 122540 were tested by incubating them on MEA,

Table 2. Physiological profiles of Antarctic strains.

Species	Strain no.	Cultural preferences						Thermal preferences (°C)					
		PDA	MEA	CzA	OA	0	5	10	15	20	25	30	35
<i>Recurvomyces mirabilis</i>	CBS 119434	1.5±0.14	1.8±0.14	0.5±0.14	1.65±0.07	0.45±0.07	0.8±0.2	1.5±0.26	1.9±0.26	0.78±0.2	-	-	-
<i>Elasticomyces elasticus</i>	CBS 122538	1.7±0.2	1.5±0.14	0.5±0.14	1.5±0.14	0.82±0.064	0.64±0.079	1.2±0.2	1.6±0.26	1.54±0.09	0.95±0.15	-	-
	CBS 122539	1.5±0.1	1.43±0.15	0.3±0.02	1.23±0.2	0.77±0.1	0.6±0.2	1.1±0	1.5±0.14	1.2±0.2	0.6±0.2	-	-
	CBS 122540	1.0±0.2	1.1±0.1	0.2±0.02	1.0±0.2	0.72±0.1	0.5±0.14	1.13±0.2	1.4±0.17	1.2±0.2	0.8±0.08	-	-

Cultural and thermal preferences reported as diameter of the colonies (cm), after two mos of incubation. The values represent the average of three different tests. Plates for cultural preferences were incubated at 10 °C for strain CBS 119434 and at 20 °C for strains CBS 122538, 122539 and 122540; plates for temperature preferences were seeded on MEA; - = no growth.

Table 3. Cultural preferences and salt tolerance of acidophilic strains.

Species	Strain no.	Cultural preferences						NaCl %					
		PDA	MEA	CzA	OA	1.2	1.5	3	5	7	10	12	
<i>Acidomyces acidophilum</i>	CBS 899.87	1.17±0.1	1.33±0.15	0.3±0.02	1.17±0.1	1.3±0.02	0.7±0.02	0.6±0.03	0.6±0	0.5±0	0.2±0.02	-	
	CBS 335.97	1.08±0.1	1.9±0.14	0.6±0.2	1.0±0.2	1.5±0.02	0.5±0.02	0.4±0.04	0.3±0.02	0.2±0.02	-	-	
	dH 12881	2.0±0.14	1.5±0.14	1.2±0.2	1.5±0.1	1.5±0.02	1.5±0.02	1.5±0.02	0.7±0.03	0.5±0.04	-	-	
	dH 11526	2.5±0.2	3.0±0.2	1.5±0.14	1.2±0.2	2.5±0.02	2.0±0.04	2±0.04	0.8±0.03	0.6±0.008	-	-	
	dH 13081	1.8±0.14	2.2±0.2	1.1±0.1	1.0±0.2	1.0±0.04	0.8±0.02	0.8±0.02	0.6±0.02	0.3±0.02	-	-	

Growth on different media and salt concentration expressed as diameters of the colonies (cm); - = no growth.

Table 4. Thermal and pH preferences of acidophilic strains.

Species	Strain no.	Thermal preferences (°C)						pH					
		4	10	18	25	30	37	1	3	5	7	9	
<i>Acidomyces acidophilum</i>	CBS 899.87	-	-	+	++	+	-	+	+	++	+	±	
	CBS 335.97	+	+	++	+	+	-	+	++	++	+	-	
	dH 12881	+	+	++	++	+	-	+	++	+	±	-	
	dH 11526	+	+	+	+	++	-	+	++	++	+	-	
	dH 13081	+	+	+	++	+	-	±	++	++	+	-	

++ = maximum growth recorded; + = growth; ± = weak growth; - = no growth.

in Petri dishes at 0–35 °C (in 5° intervals)  $\pm$  1 °C. The diameter of the colonies was recorded monthly. Tests were performed in triplicate. Optimum temperatures for growth and development of the strains CBS 899.87, CBS 335.97, dH12881, dH11526 and dH13081, were determined by seeding 25 mL flasks containing 2 % Malt Extract Broth (MEB) with 0.25 mL of a  $10^5$  cells/mL suspension and incubating in shaken culture at 70 r.p.m. After 30 d of incubation at temperatures of 4, 10, 18, 25, 30, 37 °C, cultures were filtered and the biomass dry-weighed. The test was performed in duplicate.

### Growth at different salt concentrations

The ability to grow at different salinities was tested in duplicate on plates of MEA amended with 1.2, 1.5, 3, 5, 7, 10 or 12 % NaCl. Strains were inoculated in three spots on each plate and incubated at 25 °C for one mo, when the colony diameter was recorded. Colonies with a diameter >2 mm were considered positive (Kane & Summerbell 1987).

### Growth at different pH

The ability to grow at different pH values for the strains CBS 899.87, CBS 335.97, dH12881, dH11526 and dH13081 was tested in duplicate using MEB2 % medium at pH 1, 3, 5, 7 and 9. Values of pH 5 were obtained by the addition of 1N HCl; remaining pH values were obtained according to Küster & Thiel (1990) as follows: McIlvaine solution for pH 2–7, Clark & Lubs solution for pH 8–9; buffer HCl/KCl for pH 1. Strains were incubated at 25 °C in shaken culture at 70 r.p.m. for one mo, cultures were filtered and the biomass dry-weighed.

## RESULTS

### Physiology

Temperature relations and cultural features of the strains CBS 119434, 122538, 122539 and 122540 are shown in Table 2. Physiological data for the strains CBS 899.87, CBS 335.97, dH12881, dH11526 and dH13081 are reported in Tables 3 and 4. All fungi tested were able to grow on natural media showing clearly visible growth on MEA as well as on PDA and OA, whilst there was a marked reduction of ultimate colony diameter when seeded on CzA. CBS 119434 was able to grow in the range 0–20 °C, with an optimum at 15 °C, whereas strains CBS 122538, 122539 and 122540 grew in a wider range of temperatures between 0 and 25 °C, with an optimum at 15–20 °C. Strains CBS 899.87, CBS 335.97, dH12881, dH11526 and dH13081 grew best in the range of 18–30 °C, with the optimum temperature at 18 °C for the strains CBS 335.97 and dH 12881, 25 °C for the strains CBS 899.87 and dH 13081, and 30 °C for the strain dH 11526. Since almost all strains (except CBS 899.87) were still able to reproduce at 4 °C, they can be referred as mesophilic-psycrotolerant (Zucconi *et al.* 1996). None of them grew at 37 °C. Furthermore, they were able to grow in very acidic conditions (pH 1) and most of them grew best at pH 5 or below. In particular the optimum was pH 5 for the strain CBS 899.87, around pH 3–5 for the strains CBS 335.97, dH11526 and dH 13081 and pH 3 for the strain dH 12881. All the strains studied showed a decreasing growth at pH 7 and stopped to grow at pH 9, with the exception of strain CBS 899.87 which was able to grow in a very wide range of pH values showing a weak growth even at pH

9. The strains demonstrated also to be moderately halophilic being able to grow in up to 7 % NaCl (strains CBS 335.97, dH11526, dH 13081, dH 12881) and in up to 10 % for the strain CBS 899.87.

### Phylogeny

SSU sequences were analysed for 71 strains of ascomycetous black yeasts and relatives belonging to the orders *Capnodiales*, *Dothideales*, *Myriangiales* as well as the recently proposed new order *Botryosphaerales* (Schoch *et al.* 2006). The recently described taxon *Baudoinia compniacensis* (Richon) J.A. Scott & Unter. (Scott *et al.* 2007) with an SSU similarity around 97 % with some capnodialean/dothidealean strains, was not included in this comparison. Fig. 1 shows a Neighbour Joining tree based on the SSU comparison where the outgroup is represented by *Aliquandostipite khaoyaiensis* (*Jahnulales*).

Three Antarctic rock strains (CBS 122538, 122539 and 122540), with nearly identical sequences, were included in a group paraphyletic to *Friedmanniomyces endolithicus* Onofri. The strains shared a remarkable morphology, with straight fertile hyphae of which fragments detached, sometimes by basauxially expanding connectives.

Strain CBS 119434 clustered in a clade composed of mainly meristematic species, which included the Antarctic rock-inhabiting genus *Friedmanniomyces*. This strain also had characteristic morphology, showing a unique pattern of recurved hyphal branching at conidiation. Another strain with nearly identical sequence, CBS 117957 from Mediterranean rocks, showed a simple, undiagnostic meristematic micromorphology. The lichenicolous fungus *Hobsonia santessonii* Lowen & D. Hawksw. belonged to the same group, together with the black fungus *Mycocalicium victoriae* (C. Knight ex F. Wilson) Tibell.

The acidophilic species *Hortaea acidophila* Hölker *et al.* and *Acidomyces acidophilum* as “*Acidomyces richmondensis*” B.J. Baker *et al.* composed a sister clade to the *Friedmanniomyces* complex. The halophilic species *Hortaea werneckii* (Horta) Nishimura & Miyaji was found at a larger distance, in a heterogeneous clade with *Pseudotaeniolina globosa* De Leo *et al.*, *Catenulostroma abietis* (Butin & Pehl) Crous & Braun and *Coccodinium bartschii* A. Massal. As the backbone of the tree shows low bootstrap values for most clades, the exact phylogenetic positions of the newly added Antarctic and acidophilic species are difficult to determine.

The ITS tree shown in Fig. 2 was generated on the basis of the manually optimised alignment containing 95 sequences of halophilic, acidophilic, rock and plant-pathogenic fungi; it is based on a length of 452 characters, including alignment gaps. The AICc selected HKY+G (Hasegawa *et al.* 1985) as the best model. The base frequencies was as follows: T = 0.2293, C = 0.3120, A = 0.2009, G = 0.2574, TC = 0.5413, AG = 0.4583. The entire ITS region showed too many polymorphisms to allow alignment with a sufficient degree of confidence. For this reason, DNAWD was applied, which is insensitive to alignment. Topology of this tree was identical (data not shown).

In general the ITS trees showed excellent resolution of entities. Inter-group variability was constant and invariably significantly larger than intra-group variability. The tree contained anamorph taxa from extreme environments, as well as a number of plant-associated species of *Teratosphaeria* Syd. & P. Syd. Three main clades were discernible: an upper clade around *Teratosphaeria microspora* J.E. Taylor & Crous, a clade with *T. nubilosa* (Cook) Crous & U. Braun as central species, and an outgroup with strains isolated at very low pH (Fig. 2).

A single cluster is composed of strains listed as *Teratosphaeria*

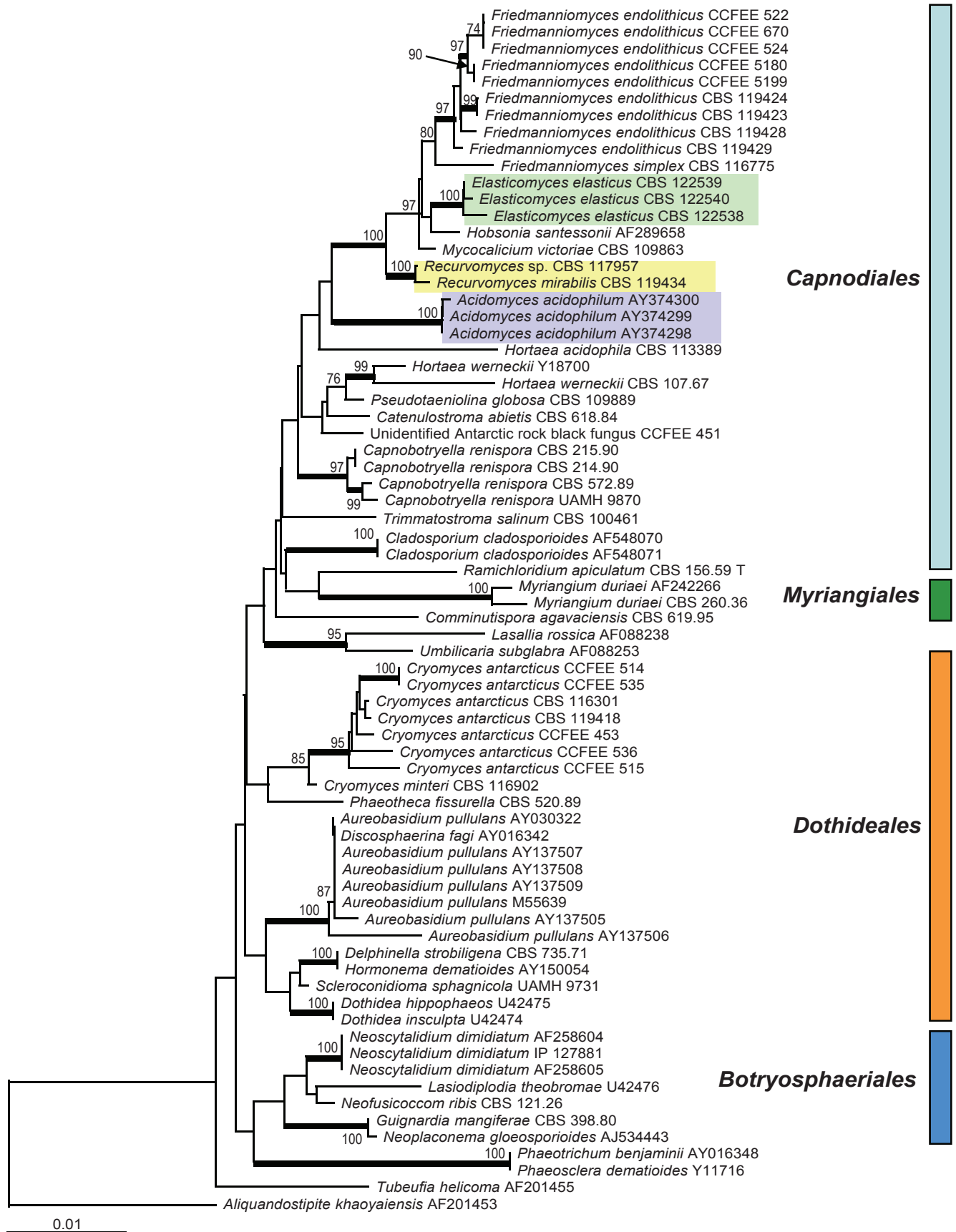
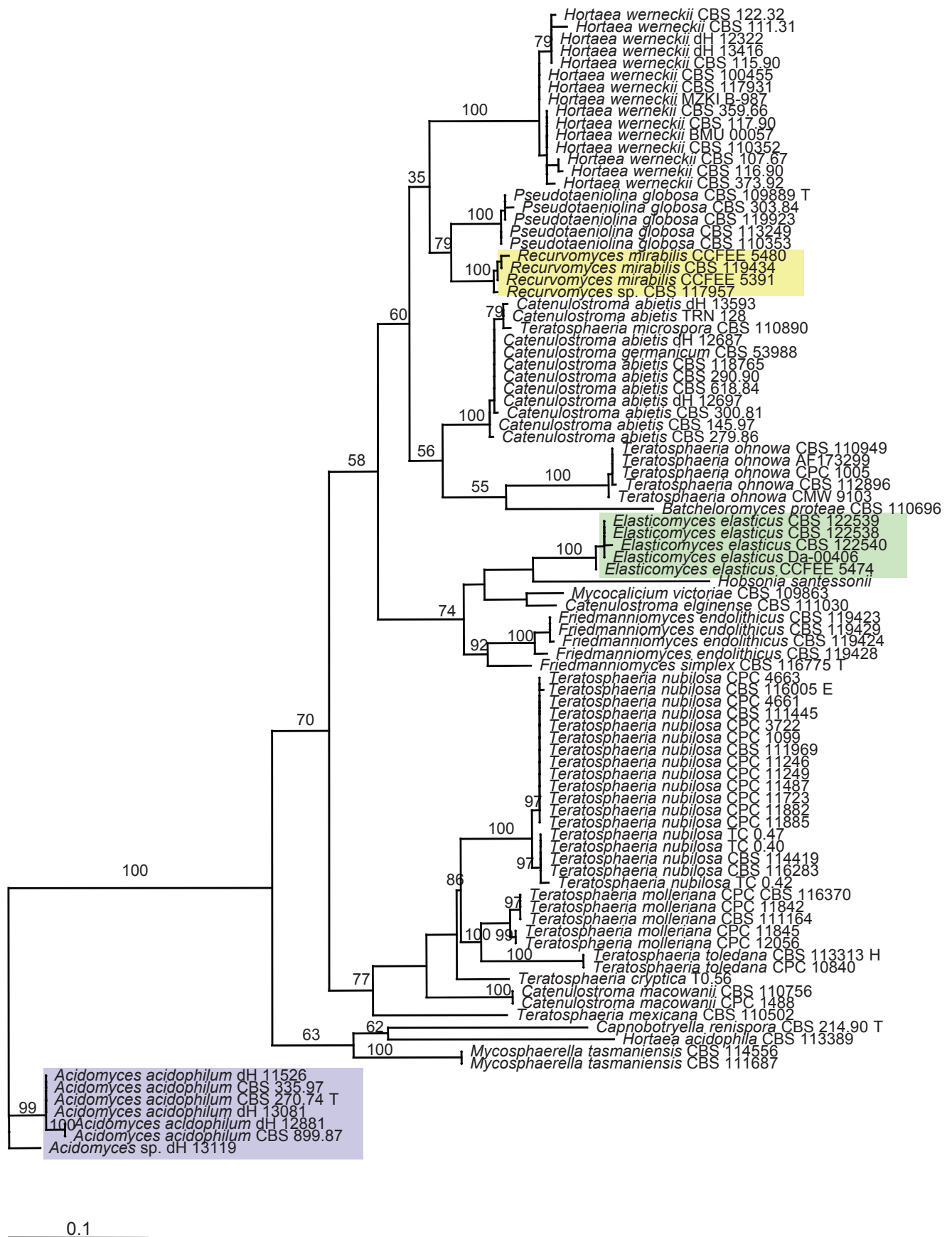
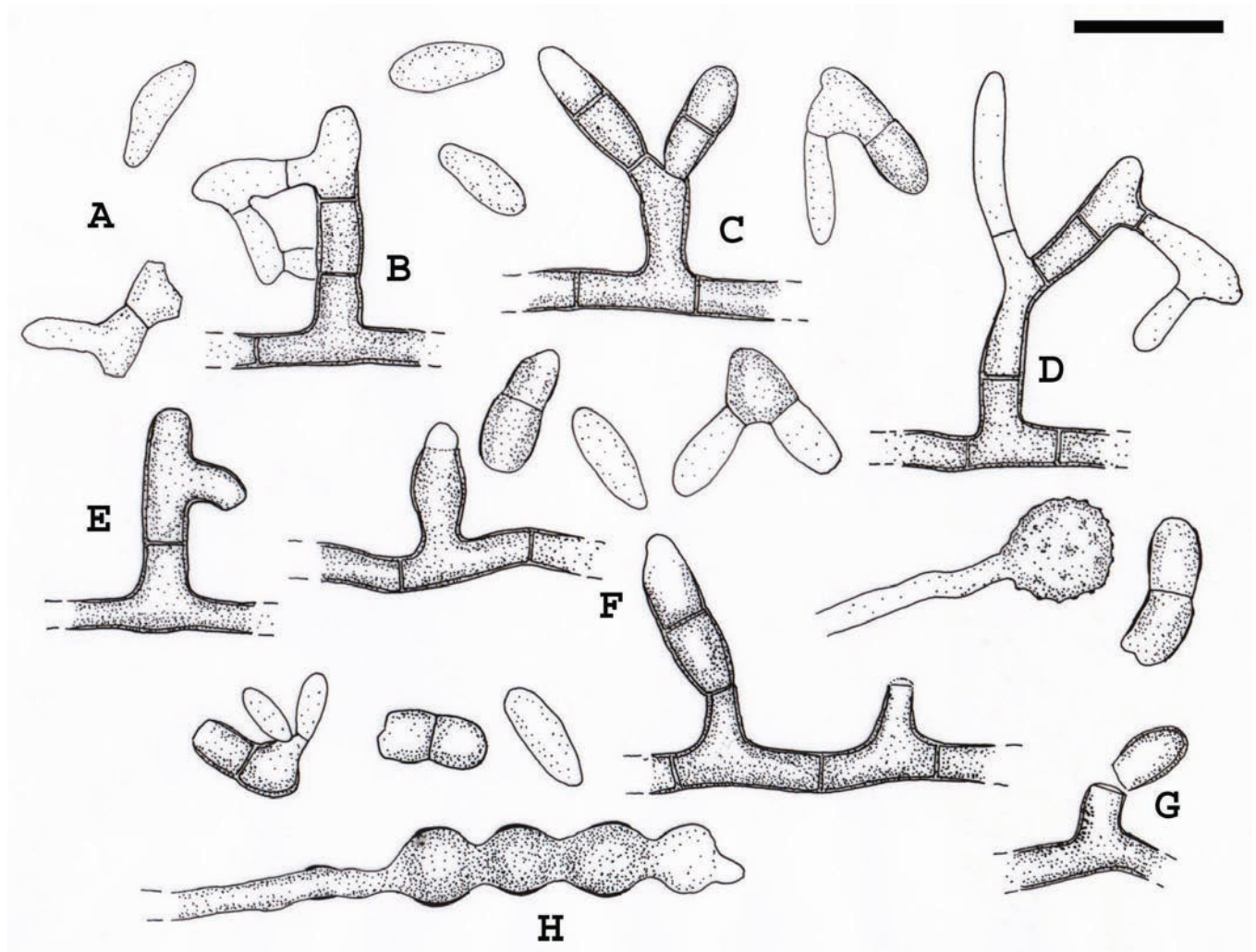


Fig. 1. Molecular phylogeny based on SSU sequences indicating the positions of the clades in *Dothideomycetidae*; the described new genera were highlighted with coloured rectangles. The tree has been built with neighbour-joining algorithm in ARB package with 100 replications. Branches of the clades supported by a bootstrap value above 95 % are in bold.





**Fig. 2.** Molecular phylogeny of the analysed ITS rDNAs showing the relationship of the new genera described, highlighted with coloured rectangles, in the *Capnodiales*. The neighbour-joining tree, based on 95 sequences and 452 nucleotide positions, has been generated using HKY+G model; the model was calculated using ML in MrAIC software. Bootstrap values from 100 resampled data sets are shown.



**Fig. 3.** *Recurvomyces mirabilis*. A. 1-celled conidia and ramoconidia. B–D. Septate and branched conidiophores; branches forming right angle and bent down. E. Conidiophore with recurved hyphal branching. F. Conidiogenous cells producing conidia by enteroblastic proliferation. G. Schizolytic conidial secession. H. Swelling cells. Scale bar = 10 µm.

*microspora*, *Catenulostroma abietis* (Butin & Pehl) Crous & U. Braun and *C. germanicum* Crous & U. Braun. The strain TRN 128 from Mediterranean rock is found in a paraphyletic position. *Pseudotaeniolina globosa* is a member of the same clade, while the endemic Antarctic *Friedmanniomyces* species are members of a neighbouring clade which includes *Mycocalicium victoriae* CBS 109663 and the lichenicolous fungus *Hobsonia santessonii*, without any known teleomorph. Five further undescribed Antarctic strains, among which was CBS 122539, constituted a sister clade (Fig. 2), and phenetically all showed conidial dehiscence with basauxically expanding connectives; we here describe a new genus, *Elasticomyces* Zucconi & Selbmann for this group. Another, separate cluster of four strains from Antarctic and Mediterranean rocks was found around CBS 119434, strains microscopically either showing recurved conidial branches or a reduced, meristematic morphology; for which we describe a new genus, *Recurvomyces* Selbmann & de Hoog. The halo- respectively acidophilic *Hortaea* species, *H. werneckii* and *H. acidophila*, were located at clearly separate positions. The same clade included also the plant-pathogenic teleomorph species *Teratosphaeria ohnowa* (Crous & M.J. Wingf.) Crous & U. Braun occurring on leaves of *Myrtaceae*. A basal cluster comprised some strains, among which *Scytalidium acidophilum* CBS 270.74 was selected as outgroup. The clade contained the plant-pathogenic *Mycosphaerella nubilosa* (Cooke)

Hansf. and, as sister clade, a group of acidophilic fungi which included the ex-type strain of *Scytalidium acidophilum* Sigler & J.W. Carmich. CBS 270.74, isolated from acidic soil, was found to be identical to that species. No teleomorph relationships are known for this group. *S. acidophilum* was found to be identical to strains of the the invalidly described genus “*Acidomyces*” B.J. Baker *et al.* That genus is validated below as *Acidomyces* B.J. Baker *et al.* ex Selbmann *et al.*

## DESCRIPTIONS

***Recurvomyces* Selbmann & de Hoog, gen. nov.** – MycoBank MB511293.

Ad fungos anamorphos, hyphomycetes pertinens. *Coloniae* in agar maltoso lente crescentes, compactae, velutinae, nigrae vel olivaceo-nigrae. *Mycelium* ex hyphis longis, levibus, pallide brunneis et crassitunicatis compositum. Hyphae torulosae interdum productae, brunneae, crassitunicatae, enteroblastice proliferantes. *Conidiophora* macronematosa vel semi-macronematosa, saepe ramosa, cum ramis lateralibus saepe angulo recto dispositis deorsumque inflexis. *Conidia* enteroblastica, schizolytice secedentia. *Ramoconidia* interdum producta. Teleomorphosis ignota.

*Species typica:* *Recurvomyces mirabilis* Selbmann & de Hoog, sp. nov.

Anamorphic fungi, hyphomycetes. *Colonies* very slowly growing, compact, heaped, black or olive-black. *Mycelium* composed of long, smooth, yellowish brown and thick-walled hyphae. Torulose hyphae sometimes present, brown, thick-walled, smooth to verrucose, enteroblastically proliferating. *Conidiophores* macronematous or semi-macronematous, often branched with lateral branches mostly at roughly right angle and bent down. *Conidia* produced by enteroblastic proliferation released by schizolytic secession. *Ramoconidia* sometimes present.

*Teleomorph*: Unknown; phylogenetic affinity to the ascomycete order *Capnodiales*.

*Type species*: *Recurvomyces mirabilis* Selbmann & de Hoog, sp. nov.

***Recurvomyces mirabilis*** Selbmann & de Hoog, sp. nov. – MycoBank MB511294, Figs 3–5.

*Coloniae* in agar maltoso acervatae, compactae, margine regulari atque plano, velutinae, nigrae vel olivaceo-nigrae, reversus nigrum, lente crescentes, post tres menses usque ad 18 mm diam. *Mycelium* ex hyphis longis, levibus, pallide brunneis et crassitunicatis, apicem versus gradatim pallidioribus et subtilius tunicatis, subhyalinis, interdum anastomosos ferentibus, septatis, ramosis compositum. Torulosae hypae interdum productae, brunneae, crassitunicatae, leves vel verrucosae, partibus inflationis 4.5–7.5 µm crassis, proliferatione apicali enteroblastica ortae. *Conidiophora* ex mycelio superficiali orientia, macronematosa vel semi-macronematosa, mononematosa, erecta, brevia, septata, levia, crassitunicata, brunnea, apicem versus gradatim pallidiora et tenuitunicata, ex proliferatione enteroblastica percurrente orientia, saepe ramosa, cum ramis lateralibus saepe angulo recto dispositis, deorsum inflexis. *Cellulae conidiogenae* polyblasticae, integratae, terminales vel intercalares, tenuitunicatae, brunneae, enteroblasticae, post schizolyticam secessionem conidorum tenui cicatrice praeditae. *Conidia* enteroblastica, sicca, solitaria, 0–1-septata, subhyalina vel dilute brunnea, tenuitunicata, levia, ellipsoidea vel obovoidea, raro modice ad septum constricta, ad apicem rotundata, plano hilo basilari incospicuo praedita post schizolyticam secessionem, 7.2–11.2 × 2.5–4.7 µm. Propagula liberata e partibus terminalibus conidiophorum vel cellulis conidiogenis orientia; ramoconidia etiam producta, saepe 1-septata, brunnea, crassitunicata, forma irregulare, quae a latere enteroblastica conidia gignere possunt. Teleomorphosis ignota.

*Holotypus*: CBS H-20178, cultura ex-typo CBS 119434 = CCFEE 5264, in Promontorio Pugnae Navalis, Terra Victoriae Meridionalis, Antarctica, isolatus ex arenari saxo. L. Zucconi legit, 24.1.2004.

*Cultural characteristics*: Description based on strain CBS 119434 at 10 °C.

*Colonies* on MEA and PDA heaped, with flat and regular margin, on OA remaining almost completely flat; growth very slow: diameter after two mos 18 mm on MEA2, 16.5 mm on OA, 15 mm on PDA, and 5 mm on CzA. Colony obverse olive-black, compact, felty; reverse black. *Mycelium* composed of long, smooth, yellowish brown and thick-walled hyphae, paler and thinner-walled towards the subhyaline apices, septate, branched, with occasional anastomosos. Torulose hyphae sometimes present, brown, thick-walled, smooth to verrucose, with swellings 4.5–7.5 µm wide, formed by enteroblastic apical proliferation. *Conidiophores* erect, semi-macronematous, mononematous, short, septate, smooth, thick-walled, brown, paler and thinner towards the apex, developing from percurrent enteroblastic proliferations of short simple conidiophores, repeatedly branched, with lateral branches mostly at roughly right angle and bent downward. *Conidiogenous cells* polyblastic, integrated, terminal or intercalary, thin-walled, brown, producing conidia by enteroblastic proliferation, with slight abscission scars remaining after schizolytic conidial secession.

*Conidia* enteroblastic, dry, solitary, 0–1-septate, subhyaline to yellowish brown, thin-walled, smooth, ellipsoidal to obovoidal, sometimes slightly constricted at the median septum, rounded at the apex and with a flat scar at the base, 7.2–11.2 × 2.5–4.7 µm; conidial secession schizolytic. Terminal parts of conidiophores or apical conidiogenous cells generally breaking off producing propagules; ramoconidia also present, formed by schizolytic secession, mostly 1-septate, brown, thick-walled, irregular in shape, laterally producing conidia by enteroblastic proliferation.

*Teleomorph*: Unknown.

*Holotype*: CBS H-20178, cultura ex-typo CBS 119434 = CCFEE 5264, Battleship Promontory, McMurdo Dry Valleys, Southern Victoria Land, Antarctica, isolated from sandstone. Leg. L. Zucconi, 24 Jan. 2004.

*Strains examined*: CBS 119434; CCFEE 5480; CCFEE 5391; CBS 117957.

***Elasticomyces*** Zucconi & Selbmann, gen. nov. – MycoBank MB511296.

Ad fungos anamorphos, hyphomycetes pertinet. *Coloniae* compactae, coactae, cumulatae, nigrae, lente crescentes. *Mycelium* ex hyphis longis, septatis, ramosis, tenuitunicatis, hyalinis vel pallide pigmentatis compositum. *Hyphae fertiles* obscuriores et magis crassitunicatae, repetite ramosae, septatae, fissione ad septa in conidia disarticulantes. *Arthroconidia* catenata, uni- vel pluricellularia, cylindrica, utrimque secessione schizolytica truncata. Teleomorphosis ignota.

*Species typica*: *Elasticomyces elasticus* Zucconi & Selbmann, sp. nov.

Anamorphic fungi, hyphomycetes. *Colonies* compact, felted, clumped, black, slow growing. *Mycelium* composed of long, branched, septate, thin-walled, colourless or yellowish to pale brown hyphae. Fertile hyphae more pigmented and thicker-walled, repeatedly branched at roughly right angle, septate, forming conidia by fragmentation. *Arthroconidia* catenate, one or pluricellular, cylindrical, with truncated ends due to schizolytic secession.

*Teleomorph*: Unknown.

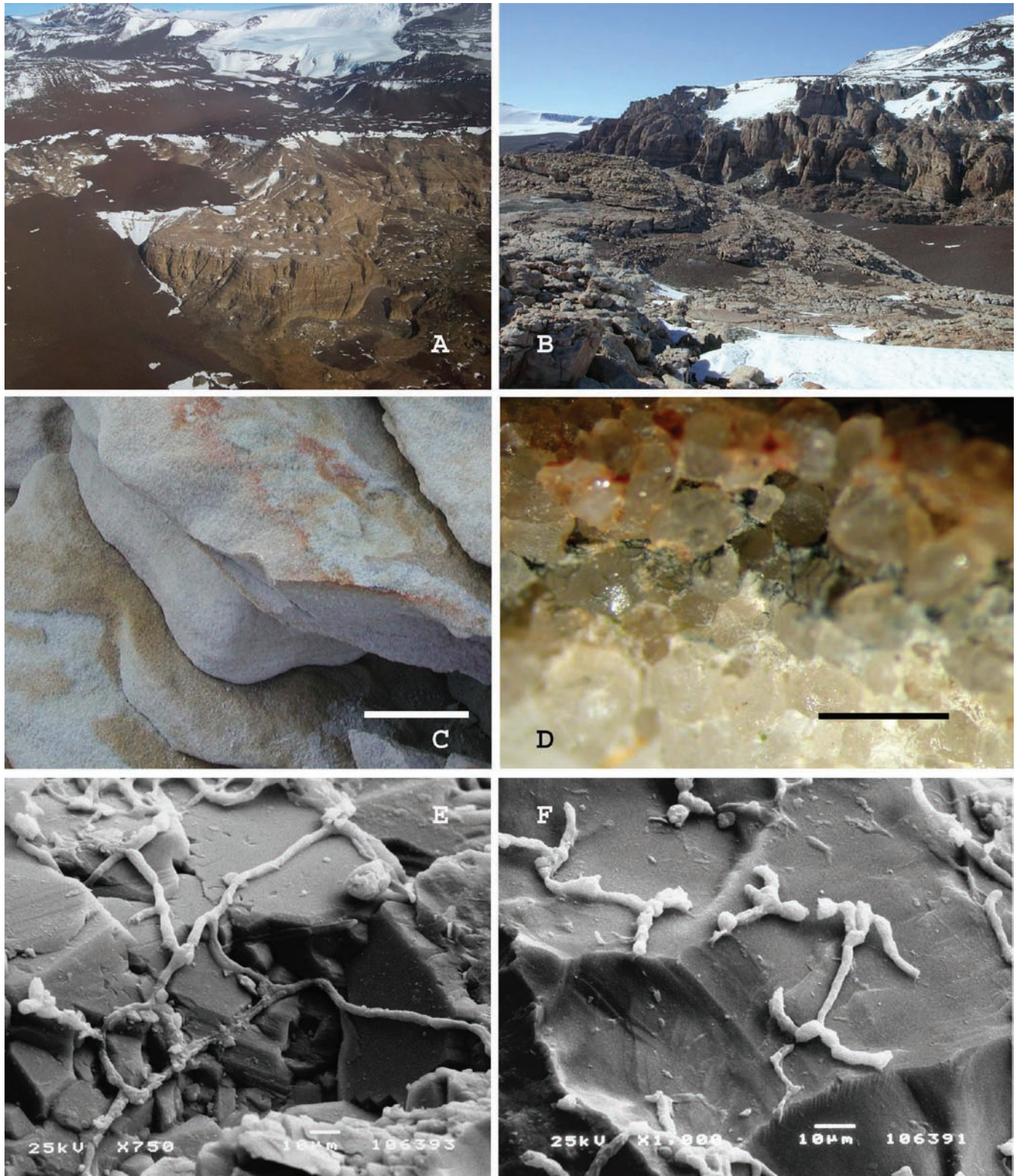
Phylogenetic affinity to the ascomycete order *Capnodiales*.

*Type species*: *Elasticomyces elasticus* Zucconi & Selbmann, sp. nov.

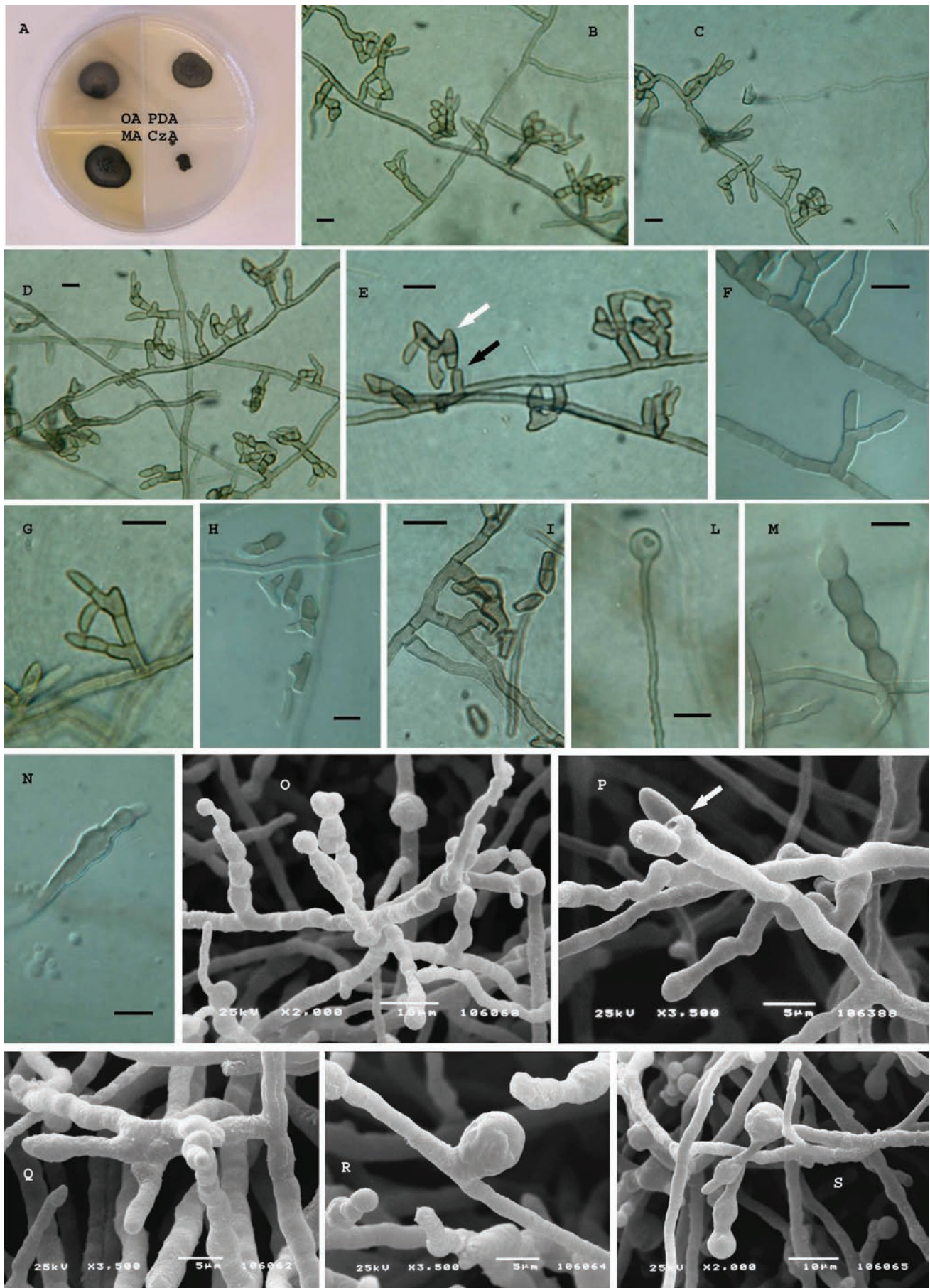
***Elasticomyces elasticus*** Zucconi & Selbmann, sp. nov. – MycoBank MB511297, Figs 6, 7.

*Coloniae* in agar maltoso compactae, coactae, partim immersae, margine plerumque irregulari, cumulatae, obversumque nigra, lente crescentes, post duos menses usque ad 15 mm diam. *Mycelium* ex hyphis longis, septatis, levibus, tenuitunicatis, luteolis vel pallide brunneis, ramosis, anastomosantibus, 3.5–5.3 µm latis compositum. *Hyphae fertiles* brunneae, crassitunicatae, ad angulo recto repetite ramosae, septatae, primum leves, demum crenulatae, fissione ad septa in numerosa brevia segmenta, ex uno vel pluribus conidiis composita, disarticulantes, interdum connectivo coniuncta. *Arthroconidia* catenata, plerumque bicellularia, rarius unicellularia, levia vel crenulata, cylindrica, truncata et magis crassitunicata ad apices secessione schizolytica, modice ad septum constricta, 12.5–16 × 3.5–5.3 µm. *Cellulae intercalares* chlamydosporarum similes interdum orientes, parietibus crassis et brunneis. Teleomorphosis ignota.

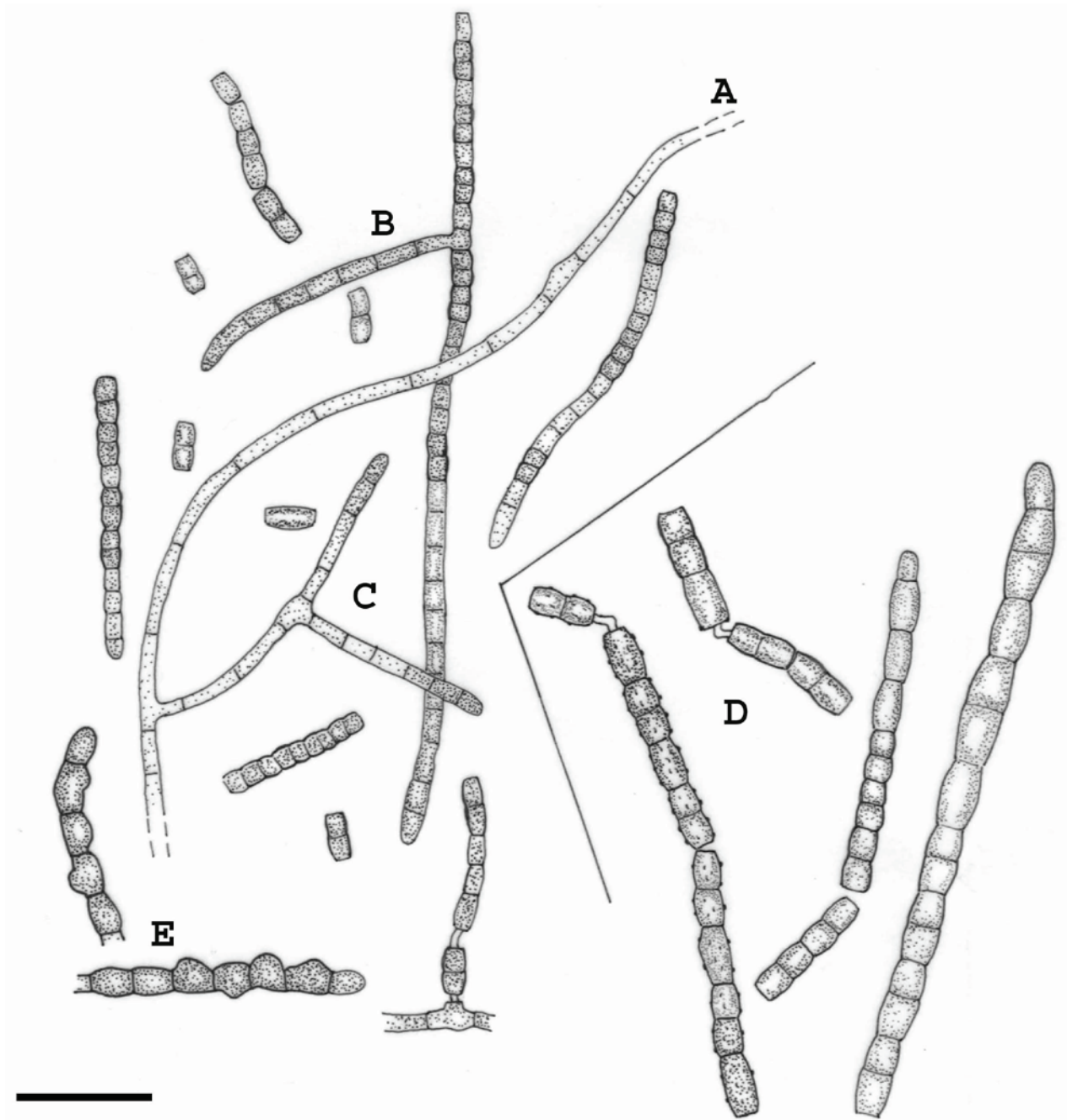
*Holotypus*: CBS H-20177, cultura ex-typo CBS 122538 = CCFEE 5313, Insula Kay, Terra Victoriae Setentrionalis, Antarctica, isolatus ex thallo *Usneae antarcticae*. L. Zucconi legit, 30.1.2004.



**Fig. 4.** A. BattleShip Promontory, Southern Victoria Land, Antarctica, view from the helicopter. B. BattleShip Promontory, Southern Victoria Land, Antarctica, landscape. C. Sandstone sample from which *Recurvomyces mirabilis* CBS 119434 has been isolated. The surface is weathered by the activity of cryptoendolithic microorganisms. Scale bar = 5 cm. D. Magnification at the dissecting microscope of the black fungi endolithic colonization inside the sample of sandstone used for the isolation. Scale bar = 2 mm. E, F. Rock colonised by the fungus observed at the Scanning Electron Microscope.



**Fig. 5.** *Recurvomyces mirabilis*, CBS 119434 (= CCFEE 5264). A. Strain grown on different media after two mo of incubation at 15 °C. B–D. Hyphae with branched and unbranched conidiophores producing 0–1 septated conidia. E. Curved branched conidiophores schizolytically seceding (black arrow) showing enteroblastic elongation (white arrow) at the apex. F, G. high magnification of branched conidiophores producing 1-celled conidia. H, I. 1- and 2-celled conidia and ramoconidia. L. Terminal swelling cell. M, N. swelling hyphae showing enteroblastic elongation. O, P. Unbranched conidiophores producing 1-celled conidia, scar is visible after schizolytic secession (P, arrow). Q. Branched conidiophore. R, S. swelling cell at intercalary (R) and terminal position (S). B–N. Light microscopy; Scale bars = 10 µm. O–S. SEM.



**Fig. 6.** *Elasticomyces elasticus*. A. Vegetative hyphae. B, C. Branched fertile hyphae producing conidia by fragmentation. D. Disarticulating fertile hyphae where cells remain joint by connectives. E. Swelling hyphae. Scale bar = 20  $\mu$ m.

**Cultural characteristics:** Description based on strain CBS 122538 at 20 °C.

**Colonies** compact, felted, partially immersed in the agar, margin rather irregular, obverse and reverse black, clumped on MEA2 % and PDA, almost completely flat on OA; slow growth: diameter after two mos 15 mm on MEA2 % and OA, 17 mm on PDA, and 5 mm on CzA. **Mycelium** composed of long, septate, branched, smooth, thin-walled, yellowish to pale brown hyphae, 3.5–5.3  $\mu$ m wide, with anastomoses. Fertile hyphae more pigmented, thicker-walled, at roughly right angle repeatedly branched, septate, at first smooth, then crenulate, forming by fragmentation numerous short segments, composed of one or more conidia, sometimes joined by connectives. **Arthroconidia** catenate, mostly bicellular, rarely aseptate, smooth or crenulate, cylindrical, with thickened and truncated ends due to schizolytic secession, slightly constricted at

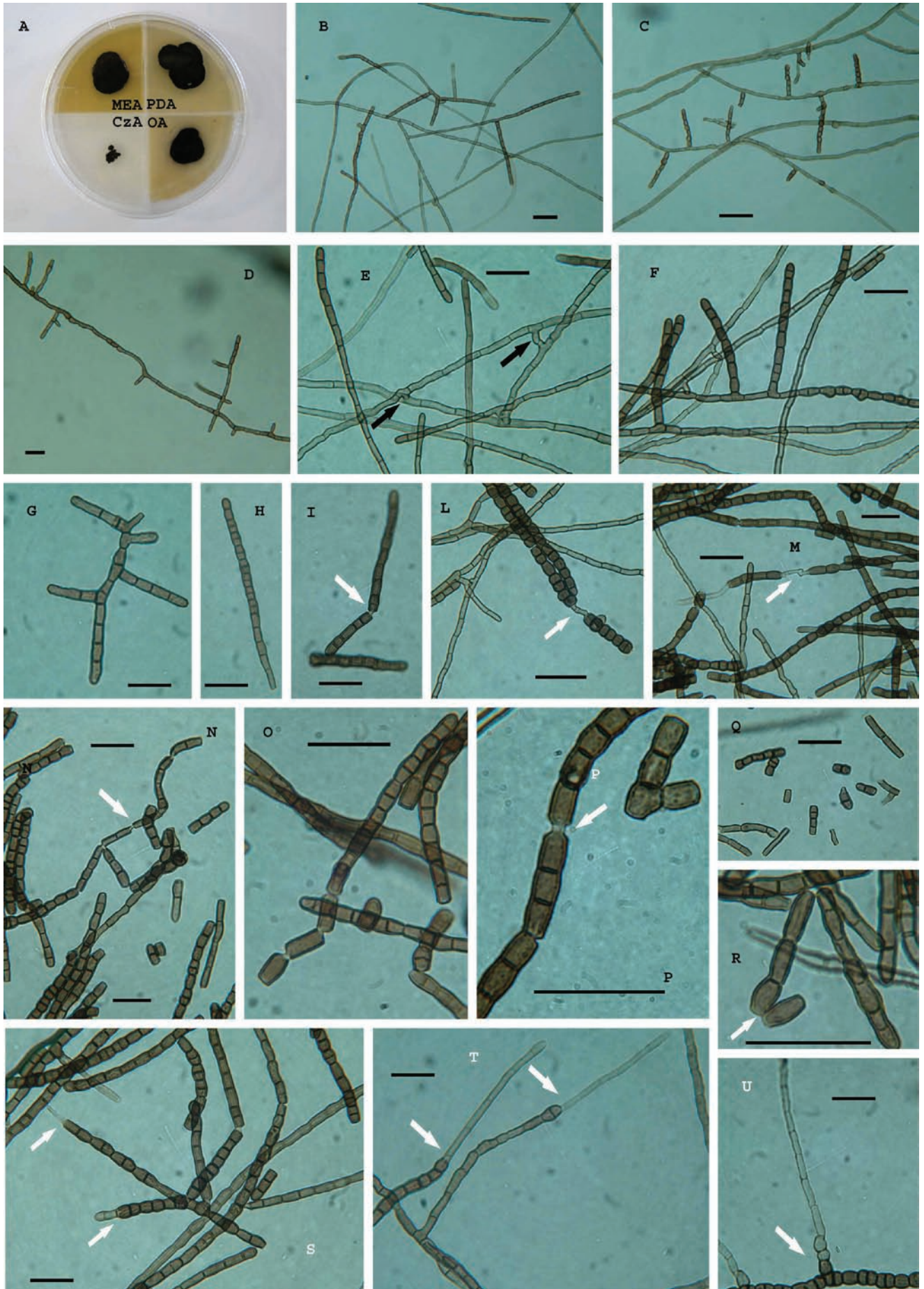
the septum, 12.5–16  $\times$  3.5–5.3  $\mu$ m. Intercalary chlamydospore-like cells, with thickened and brown wall, sometimes present.

**Teleomorph:** Unknown.

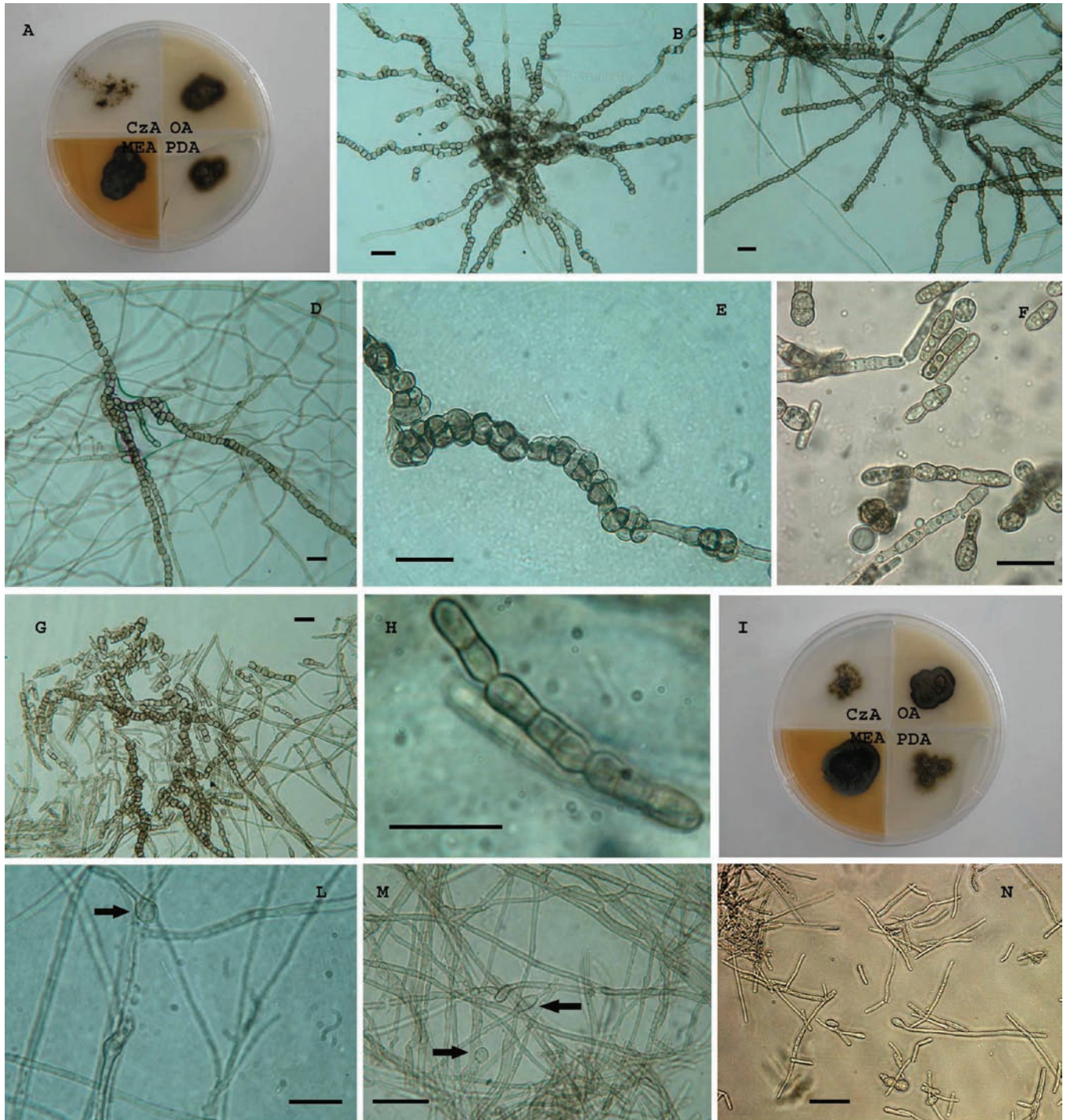
**Holotype:** CBS H-20177, culture ex-type CBS 122538 = CCFEE 5313, Kay Island (75°04'13.7"S, 165°19'0.2.0"E), Northern Victoria Land, Antarctica, isolated from lichen thallus (*Usnea antarctica* Du Rietz). Leg. L. Zucconi, 30 Jan. 2004.

**Strains examined:** CBS 122538; CBS 122539; CBS 122540; Da-004-06; CCFEE 5474.

**Notes:** The conidium ontogeny is holoarthric, involving an irregular basipetal maturation of cells and fragmentation of fertile hyphae. Often short portions of fertile hyphae are released by fragmentation



**Fig. 7.** *Elasticomyces elasticus*, CCFFEE 5313. A. Strain grown on different media after 1.5 mo of incubation at 15 °C. B–D. Vegetative and fertile hyphae. E–H. High magnification of fertile hyphae; anastomoses in the vegetative hyphae (black arrows in E). I–O. Uncompleted disarticulation of arctic conidia and hyphal fragments remaining joint by connectives (white arrows). P. High magnification of conidia remaining joint after disarticulation. Q, R. 1- and 2-celled conidia produced after schyzolitic secession (white arrow). S–U. Enteroblastic elongation at the apex (white arrows). Scale bars = 20 µm.



**Fig. 8.** *Acidomyces acidophilus*. A. Strain CBS 899.87 grown on different media after 1 mo of incubation at 25 °C. B–D, G. Toruloid unbranched hyphae with melanised and thick-walled cells. E. Meristematic development of the hyphae. F. Fungus grown at pH 1 in liquid culture. H. Chain of 1- 2- and 3- celled conidia. I. Strain CBS 335.97 grown on different media after 1 mo of incubation at 25 °C. L, M. Filamentous hyphae with intercalary and terminal swelling cells (black arrows). N. Fungus grown at pH 1 in liquid culture. Scale bars = 20 µm.

of longer hyphae, functioning as propagules. Apical growth of fertile hyphae occurs concomitantly with holoarthric development. A circumscissile scar remains at both ends, after schizolytic secession of adjacent conidia; complete disarticulation is retarded by the presence of thin strands of wall material at the central convexity of septa. Sometimes conidial secession is not completed; new wall material is laid down in the existing septum, and adjacent cells remain connected by narrow and pale connectives. Connectives can eventually elongate to form new pale hyphae, sometimes evolving in new fertile hyphae.

***Acidomyces*** B.J. Baker, M.A. Lutz, S.C. Dawson, P.L. Bond & J.F. Banfield ex Selbmann, de Hoog & De Leo, **gen. nov.** – MycoBank MB511298.

Ad fungus anamorphos, hyphomycetes pertinet. *Coloniae* lente crescentes, celerius in acido agaro, compactae, nigrae. *Mycelium* ex septatis, interdum ramosis, brunneis crassitunicatisque hyphis compositum, demum meristematice incrensens. *Conidia* arthrice secedentia. *Teleomorphosis* ignota.

Anamorphic fungi, hyphomycetes. Colonies growing slowly, faster in acidic medium, compact, dark. Mycelium composed of septate, scarcely branched, brown and thick-walled hyphae, eventually



converting into a meristematic mycelium. Conidia produced by arthric disarticulation of hyphae.

*Teleomorph*: Unknown; phylogenetic affinity to the ascomycete order *Capnodiales*.

*Type species*: *Acidomyces acidophilus* (Sigler & J.W. Carmich.) de Hoog & De Leo

***Acidomyces acidophilus*** (Sigler & J.W. Carmich.) Selbmann, de Hoog & De Leo, **comb. nov.** – MycoBank MB511856, Fig. 8.

Basionym: *Scytalidium acidophilum* Sigler & J.W. Carmich., *Canad. J. Microbiol.* 20: 267, 1974.

≡ 'Fungus D', Starkey & Waksman, *J. Bacteriol.* 45: 512, 1943 (without description, without type).

≡ '*Acidomyces richmondensis*' B.J. Baker, M.A. Lutz, S.C. Dawson, P.L. Bond & J.F. Banfield, *Appl. Environm. Microbiol.* 70: 6270, 2004 (nom. inval., Arts 36.1, 37.1 ICBN).

*Type*: UAMH 3460, from field soil, adjacent to elementary sulphur stockpile from natural gas purification plant, Bowden, Alberta, Canada [as *Scytalidium acidophilum*].

*Ex-type strain*: CBS 270.74 (= ATCC 26772 = IMI 183518 = UAMH 3460).

*Additional strains examined*: See Table 2.

## DISCUSSION

Melanised rock-inhabiting fungi are phylogenetically quite heterogeneous and have been grouped at least in four different fungal orders: *Capnodiales*, *Dothideales*, *Chaetothyriales* and *Pleosporales* (Sterflinger *et al.* 1997, Selbmann *et al.* 2005, Ruibal *et al.* 2008). Now that suitable isolation and identification techniques have been developed for these fungi (Wollenzien *et al.* 1995, Ruibal *et al.* 2005), they appear to be very common in arid climates, from Polar Regions to the subtropics. Stringent environmental conditions include high solar radiation (Urzi *et al.* 1995), strongly fluctuating temperatures (Nienow & Friedmann 1993), repeated freezing and thawing cycles (Selbmann *et al.* 2002), low water activity (Sterflinger 1998, Zalar *et al.* 1999), acidity (Price 2000), and nutrient deficiency (Sterflinger *et al.* 1999).

The physiological studies indicated that all the strains studied were well adapted to the particular stressing conditions characterising their natural environments. For instance, the strains belonging to the newly validated genus *Acidomyces*, all isolated from very acidic environments (see Table 1), showed an acidophilic profile being able to grow very well at pH 1 and with optimum well below the neutral value (pH 3–5). This means that most probably they are scarcely competitive in other environments and remain trapped in the extremely acidic ones where they have been isolated. Furthermore, they showed only a moderate tolerance to salinity. Similar data have been already reported for other acidophilic fungi phylogenetically distant from *Acidomyces* strains; for instance, *Hortaea acidophila*, was reported to be very sensitive to osmotic stresses being unable to grow at NaCl concentration above 2 % (Hölker *et al.* 2004). These data suggest that the adaptation to acidic environments does not require a concomitant tolerance to osmotic stresses. The situation seems to be different for fungi colonising rocks; Sterflinger (1998) observed a certain degree of

halotolerance for some fungal strains in a selected, phylogenetically heterogeneous, group of rock fungi. Halotolerance has been proven to be particularly pronounced in some fungi isolated from the exposed rocks of the Antarctic desert (Onofri *et al.* 2007), among the driest terrestrial ice-free areas on Earth; there, the high evaporation leads also to salt accumulation on rock surfaces and fungi adapted to that environment have to cope with both water deficiency and salinity (Ruisi *et al.* 2007).

All Antarctic strains studied can also be referred to as psychrophilic according to criteria outlined by van Uden (1984) and Vishniac (1987), having an optimum at 15 °C and being unable to grow at temperatures above 20–25 °C. This result confirms what has been recently published for other strains isolated from Antarctic rocks (Selbmann *et al.* 2005). Remarkable is the finding that strains belonging to the genus *Elasticomyces* here described, isolated from Antarctic lichens, showed a wider temperature range for growth with respect to the Antarctic cryptoendolithic strain of *Recurvomyces mirabilis* Selbmann & de Hoog. Their ability to grow at 0 as well as at 25 °C can be an adaptive strategy to withstand not only the very low temperatures characterising their natural environment but also the very wide thermal fluctuations, much more marked in the epilithic rather than in the endolithic environment.

Common features enhancing survival are high degrees of melanisation and thick cell walls (Figueras *et al.* 1996), slow, isodiametric growth, isodiametric expansion ensuring an optimal surface/volume ratio (Wollenzien *et al.* 1995), ability to change cellular polarity (Yoshida *et al.* 1996), and hence little differentiation although with great polymorphism. These characters seem to favour a marked degree of convergent evolution.

In the SSU phylogeny (Fig. 1) a clade is recognisable, containing a large number of melanised fungi that can be isolated from bare rocks, among which there is *Pseudotaeniolina globosa* isolated from rock surfaces in Sicily (De Leo *et al.* 2003). The clade also contains some *Teratosphaeria* species inhabiting leathery plant leaves, mostly in semi-arid climates (Crous *et al.* 2004); this genus was re-established as separate from *Mycosphaerella* because of this ecology and because of its phylogenetic position (Crous *et al.* 2007). The phylogenetic relationship to numerous extremotolerant species is remarkable. Most plant-associated fungi are known with their teleomorph, while for the epi- and endolithic species no teleomorphs are known. *Teratosphaeria microspora* can be found both on rock and plant leaves, suggesting that adaptation to a life at the extreme starts with dispersal under semi-arid conditions.

In general the ITS tree shows excellent resolution of species. Recognised entities were ecologically consistent (Fig. 2), such as the halophilic species *Hortaea werneckii* and the acidophilic *Acidomyces acidophilus*.

*Trimmatostroma* Corda, with the generic type species *T. salicis* Corda, was recently treated as a genus of *Leotiales*, while the capnodialean species were reclassified in *Catenulostroma* Crous & U. Braun (Crous *et al.* 2007). Teleomorph connections of *Catenulostroma* are in *Teratosphaeria*. Crous *et al.* (2007) mentioned differences in ecology and geography, as *Teratosphaeria microspora* would be an endemic species of *Protea* in South Africa, while other taxa within the *T. microspora* complex were observed on conifer needles and rocks in the Northern Hemisphere. Members of the complex are commonly observed on rocks and other relatively inert surfaces in temperate climates, but on conifer needles they produce well-defined acervuli (Butin *et al.* 1996). This suggests that superficial rock-colonising strains of this group may have originated from leathery plant leaves; we did not find any match between observed ITS polymorphisms and geography or ecology (Table

1). Crous *et al.* (2007) distinguished two additional anamorph species in the complex of *T. microspora*, viz. *Catenulostroma abietis* and *C. germanicum*. ITS sequences of these species are nearly identical (Fig. 2). At reduced water activity, *C. abietis* adapts with a meristematic form (Figueras *et al.* 1996). *Catenulostroma germanicum* was claimed to be different from *C. abietis* in having occasional oblique conidial septa, in contrast to the remaining species. In addition, in *C. abietis* the transformation to meristematic morphology reported above can be reproduced *in vitro* when reaching the stationary phase (Figueras *et al.* 1996, Yoshida *et al.* 1996), leading to the formation of septa in all directions, as in *C. germanicum*.

The genus *Friedmanniomyces* consists merely of species occurring cryptoendolithically in rocks in the Antarctic, suggesting a further degree of extremotolerant specialisation (Selbmann *et al.* 2005). The strains belonging to the new genus and species here described, *Elasticomyces elasticus*, are located as a sister group of *Friedmanniomyces*. They have been firstly isolated from Antarctic lichens, but later on also from Antarctic lichen-dominated cryptoendolithic communities, i.e. microorganisms living inside rocks in the airspaces between crystals (Friedmann & Ocampo 1976; Friedmann 1982), as well as from Andean rocks (4885 a.s.l.) colonised by epilithic lichens. In this respect lichens seem to be a recurrent element in the environments where these strains have been found. Therefore, *Elasticomyces* seems to be particularly sensitive to the oligotrophic conditions of rocks and the epi- or endolithic lichens could play a pivotal role as nutrient suppliers. The peculiar ability to produce connectives seems a distinctive feature of the genus, being observed both in strains from the Antarctic and the Andes.

The Antarctic strain CBS 119434 is at some distance from *Friedmanniomyces*. The group to which the strain belongs is described as *Recurvomyces mirabilis*, a further cryptoendolithic member of the *Capnodiales*. The ex-type strain and the strain CCFEE 5480 were both isolated from inside sandstone as a member of an Antarctic lichen-dominated cryptoendolithic community. Additional, sterile strains with a nearly identical ITS sequence, CBS 117957 (TRN 491) and CCFEE 5391, were isolated from Spanish rocks (Ruibal 2004) and the Alps (unpublished data) respectively. *Recurvomyces mirabilis* thus is an example of a rock-inhabiting fungus with a distribution spanning both hemispheres. Antarctic and Mediterranean environments have very different temperature regimens, but share high solar radiation and water deficiency at least during part of the yr, suggesting that tolerance to such stresses is promoted by the same set of morphological and physiological factors (Ruisi *et al.* 2007). No cryptoendolithic behaviour is known for Mediterranean rock-colonisers, but their prevalent mode of action is superficial biopitting (Sterflinger *et al.* 1997). Their phylogenetic affinity could be related to the production of easily air-dispersed propagules. Particularly the catenate conidia of *R. mirabilis* resemble *Cladosporium*, which is abundantly present in Antarctic air (Marshall 1997). Otherwise air-dispersed conidia are uncommon among black rock-inhabiting fungi.

*Hortaea werneckii* was found in derived position in the tree (Fig. 2). The species is one of the most pronounced halophilic fungi known to date (Sterflinger 1998, Zalar *et al.* 1999). It has a growth optimum at 17 % salt and still shows good growth near the saturation point of NaCl (Plemenitaš & Gunde-Cimerman 2005). Its natural niche is in waters of solar salterns worldwide, reaching its optimum distribution during the hot summer period.

*Hortaea acidophila* is a further related species with a very

peculiar ecology. It was isolated from a lignite extract at pH 0.6, using humic and fulvic acids as carbon sources. It was placed in the monotypic genus *Hortaea* which only included the halophilic species *H. werneckii*, in the order *Dothideales*, based on SSU rDNA sequences (Hölker *et al.* 2004).

The outgroup of the tree is composed of the genus *Acidomyces* which includes a single acidophilic species. The name *Acidomyces* was invalidly introduced (Baker *et al.* 2004) for a fungus, named "*Acidomyces richmondensis*", isolated from warm (35 to 57 °C) pyrite ore mine drainage at pH between 0.5 and 0.9. A fungus with identical properties is *Scytalidium acidophilum* (Sigler & Carmichael 1974), which was invariably isolated from extremely acidic environments (Table 1). Sequencing reference and additional strains of this species, we noticed that "*Acidomyces richmondensis*" is indeed identical to *S. acidophilum*. The phylogenetic position of the latter fungus is far away from that of the generic type species of *Scytalidium*, *S. lignicola* Pesante. The ex-type strain of that fungus, CBS 233.57 = UAMH 1502, was recently proven to belong to the subclass *Leotiomycetidae* (Hambleton & Sigler 2005), while the present study highlighted that *S. acidophilum* phylogenetically belongs to the *Dothideomycetidae*, order *Capnodiales*. This result justifies the validation of the genus *Acidomyces* and the synonymy of *A. richmondensis* with *S. acidophilum*.

*Acidomyces acidophilus* has a remarkable ecology. Starkey & Waksman (1943) first found it in extremely acidic, sulphate-containing industrial water. Gould *et al.* (1974) reported the species as the only organism isolated from a sulphur-containing soil at a pH of 1.1, where it occurred at high CFU counts. Harrison *et al.* (1966) found it in uranium mine drain water and Gimmler *et al.* (2001) on an acidophilic moss species. Ivarsson & Morita (1982) showed that acidity is a crucial factor in the ecology of this fungus, obtaining good growth when adjusting the pH to 0.5 with HCl. In pre-molecular times strains of this fungal species – defined by slow-growing cultures producing arthric conidia – frequently were not recognised, because strains tend to convert to meristematic growth, reluctantly disarticulating clumps of cells being produced, or remain entirely hyphal, without conidiation. ITS-sequencing proved the strict identity of all these strains. All positively identified strains originated from environments with pH of 2.0 or below (Table 1).

All the fungi described above are highly melanised. Melanin is frequently viewed as a virulence factor playing a role in fungal pathogenicity to humans (Wheeler & Stipanovic 1985, Schnitzler *et al.* 1999, Paolo *et al.* 2006). Increasing amounts of melanin made *Madurella mycetomatis* (Laveran) Brumpt more virulent, apparently scavenging oxygen radicals (van de Sande *et al.* 2006). Meristematic growth also is a known virulence factor (Matsumoto *et al.* 1984). Nevertheless, members of the subclass *Dothideomycetidae* are only exceptionally encountered as agents of infection (Clark *et al.* 1995, Caporale *et al.* 1996, Kurzai *et al.* 2003). In contrast, a large number of agents of severe mycoses is known in black yeasts belonging to the subclass *Chaetothyriomycetidae*, order *Chaetothyriales* (de Hoog *et al.* 2001). All factors discussed above of melanisation, meristematic morphology, growth at low water activity and at high/low temperature, and acid tolerance, are encountered in *Dothideales* as well as in *Chaetothyriales*, in varying combinations, but only in *Chaetothyriales* they play a role in infection. For example, meristematic morphology, particularly expressed at low pH (Mendoza *et al.* 1993), determines the invasive form in humans with the black yeast-specific skin disease chromoblastomycosis. The natural habitat of one of the agents of this disease, *Cladophialophora carrionii* (Trejos) de Hoog *et al.*, was found to be in cactus debris in semi-arid climates (de Hoog *et*

al. 2007), where the same morphology is expressed as prevalent in human skin. This suggests that in *C. carrionii* the extremotolerant morphology directly enhances human invasion. Nevertheless, de Hoog *et al.* (2005) noticed that human pathogenicity is associated with a stress-factor like osmotolerance at the order level, but the two factors are nearly mutually exclusive at the species level. This means that extremotolerance may facilitate pathogenic evolution, but this has to be additive to other factors, such as, in the case of *Chaetothyriales*, oligotrophy with the ability to assimilate monoaromatics (Prenafeta-Boldú *et al.* 2006). We therefore consider the characters listed above as primarily suited for growth on exposed surfaces under harsh climatic conditions, rather than for the capacity to evade immune cells.

In summary, we determined a group with pronounced extremotolerance among semi-arid plant-associated fungi. It is probable that all these fungi share elaborate complexes of factors, as an adaptive response to these extreme conditions (Plemenitaš & Gunde-Cimerman 2005). Having acquired a basic set of vitality factors, a shift to a different habitat with a comparable degree of stress seems to be allowed. Phylogeny thus is predictive for ecology in that overall tendencies within a single clade are similar; the shifts to other extreme conditions may be possible provided that they fit the same framework of extremotolerance. In this group of fungi, the winning strategy consists in escaping competitors by colonising selective niches.

## ACKNOWLEDGEMENTS

This research received support from the SYNTHESYS Project <http://www.synthesys.info/> which is financed by European Community Research Infrastructure Action under the FP6 "Structuring the European Research Area" Programme. The authors would like to thank PNRA (Italian National Program for Antarctic Research) for supporting samples collecting, Italian National Antarctic Museum "Felice Ippolito" for supporting CCFEE (Culture Collection of Fungi From Extreme Environments). The Alpine guides A Serafini and M Heltai are kindly acknowledged for collecting rock samples in the Alps and Aconcagua respectively.

## REFERENCES

- Baker BJ, Lutz MA, Dawson SC, Bond PL, Banfield JF (2004). Metabolically active eukaryotic communities in extremely acidic mine drainage. *Applied and Environmental Microbiology* **70**: 6264–6271.
- Bills GF, Collado J, Ruibal C, Peláez F, Platas G (2004). *Hormonema carpetanum* sp. nov., a new lineage of dothideaceous black yeasts from Spain. *Studies in Mycology* **50**: 149–157.
- Bogomolova EV, Minter DW (2003). A new microcolonial rock-inhabiting fungus from marble in Chersonesos (Crimea, Ukraine). *Mycotaxon* **86**: 195–204.
- Bruns TD, Vilgalys R, Barns SM, Gonzalez D, Hibbett DS, Lane DJ, Simon L, Stickel S, Szaro TM, Weisburg WG (1992). Evolutionary relationships within the fungi: analyses of nuclear small subunit rRNA sequences. *Molecular Phylogenetics and Evolution* **1**: 231–241.
- Butin H, Pehl L, Hoog GS de, Wollenzien U (1996). *Trimmatostroma abietis* sp. nov. (Hymenocetes) and related species. *Antonie van Leeuwenhoek* **69**: 203–209.
- Caligiore RB, Licinio P, Dupont J, Hoog GS de (2005). Internal Transcribed Spacer rRNA gene-based phylogenetic reconstruction using algorithms with local and global sequence alignment for black yeasts and their relatives. *Journal of Clinical Microbiology* **43**: 2816–2823.
- Caporale NE, Calegari L, Perez D, Gezeule E (1996). Peritoneal catheter colonization and peritonitis with *Aureobasidium pullulans*. *Peritoneal Dialysis International* **16**: 97–98.
- Clark EC, Silver SM, Hollick GE, Rinaldi MG (1995). Continuous ambulatory peritoneal dialysis complicated by *Aureobasidium pullulans* peritonitis. *American Journal of Nephrology* **15**: 353–355.
- Crous PW, Braun U, Groenewald JZ (2007). *Mycosphaerella* is polyphyletic. *Studies in Mycology* **58**: 1–32.
- Crous PW, Denman S, Taylor JE, Swart L, Palm ME (2004). Cultivation and diseases of *Proteaceae*: *Leucadendron*, *Leucospermum* and *Protea*. *CBS Biodiversity Series* **2**: 1–193.
- Crous PW, Hong L, Wingfield BD, Wingfield MJ (2001). ITS rDNA phylogeny of selected *Mycosphaerella* species and their anamorphs occurring on *Myrtaceae*. *Mycological Research* **105**: 425–431.
- Crous PW, Wingfield MJ, Mansilla JP, Alfenas AC, Groenewald JZ (2006). Phylogenetic reassessment of *Mycosphaerella* spp. and their anamorphs occurring on *Eucalyptus*. II. *Studies in Mycology* **55**: 99–131.
- Felsenstein J (1985). Confidence limits on phylogenies: an approach using the bootstrap. *Evolution* **40**: 783–791.
- Felsenstein J (1996). *Phylogeny Inference Package*, v. 3.572. Department of Genetics, University of Washington, Seattle, WA, U.S.A.
- Figueras MJ, Hoog GS de, Take K, Guarro J (1996). Stationary phase development of *Trimmatostroma abietis*. *Antonie van Leeuwenhoek* **69**: 217–222.
- Friedmann EI (1982). Endolithic microorganisms in the Antarctic cold desert. *Science* **215**: 1045–1053.
- Friedmann EI, McKay CP, Nienow JA (1987). The cryptoendolithic microbial environment in the Ross Desert of Antarctica: satellite-transmitted continuous nanoclimate data, 1984–1986. *Polar Biology* **7**: 273–287.
- Friedmann EI, Ocampo-Friedmann R (1976). Endolithic blue-green algae in the dry valleys: primary producers in the Antarctic desert ecosystem. *Science* **193**: 1247–1249.
- Gimmler H, de Jesus J, Greiser A (2001). Heavy metal resistance of the extreme acidotolerant filamentous fungus *Bispora* sp. *Microbial Ecology* **42**: 87–98.
- Gould WD, Fujikawa JI, Cook FD (1974). A soil fungus tolerant to extreme acidity and high salt concentrations. *Canadian Journal of Microbiology* **20**: 1023–1027.
- Guindon S, Gascuel O (2003). A simple, fast, and accurate algorithm to estimate large phylogenies by maximum likelihood. *Systematic Biology* **52**: 696–704.
- Hambleton S, Sigler L (2005). *Meliniomyces*, a new anamorph genus for root-associated fungi with phylogenetic affinities to *Rhizoscyphus ericae* (= *Hymenoscyphus ericae*), *Leotiomycetes*. *Studies in Mycology* **53**: 1–27.
- Harrison VF, Gow WA, Ivarsson KC (1966). Leaching of uranium from Elliott Lake ore in the presence of bacteria. *Canadian Mining Journal* **87**: 64–67.
- Hasegawa M, Kishino H, Yano T-A (1985). Dating of the human-ape splitting by a molecular clock of mitochondrial DNA. *Journal of Molecular Evolution* **22**: 160–174.
- Hölker U, Bend J, Pracht R, Müller T, Tetsch L, Hoog GS de (2004). *Hortaea acidophila*, a new acidophilic black yeast from lignite. *Antonie van Leeuwenhoek* **86**: 287–294.
- Hoog GS de, Guarro J, Gené J, Figueras MJ (2001). *Atlas of Clinical Fungi*, 2<sup>nd</sup> ed. Centraalbureau voor Schimmelcultures, Universitat Rovira i Virgili, Utrecht, Reus.
- Hoog GS de, Nishikaku AS, Fernández Zeppenfeldt G, Padín-González C, Burger E, Badali H, Gerrits van den Ende AHG (2007). Molecular analysis and pathogenicity of the *Cladophialophora carrionii* complex, with the description of a novel species. *Studies in Mycology* **58**: 219–234.
- Hoog GS de, Zalar P, Gerrits van den Ende AHG, Gunde-Cimerman N (2005). Relation of halotolerance to human-pathogenicity in the fungal tree of life: an overview of ecology and evolution under stress. In: *Adaptation to life at high salt concentrations in Archaea, Bacteria, and Eukarya* (Gunde-Cimerman N, Oren A, Plemenitaš A eds). Springer, Dordrecht, The Netherlands: 373–395.
- Hoog GS de, Zalar P, Urzi C, De Leo F, Yurlova NA, Sterflinger K (1999). Relationship of dothideaceous black yeasts and merismatic fungi based on 5.8S and ITS2 rDNA sequence comparison. *Studies in Mycology* **43**: 31–37.
- Ivarsson KC, Morita H (1982). Single-cell protein production by the acid-tolerant fungus *Scytalidium acidophilum* from acid hydrolysates of waste paper. *Applied and Environmental Microbiology* **43**: 643–647.
- Jobb GA, von Haeseler A, Strimmer K (2004). TREEFINDER: a powerful graphical analysis environment for molecular phylogenetics. *BMC Evolutionary Biology* **4**: 18.
- Kane J, Summerbell RC (1987). Sodium chloride as aid in identification of *Phaeoanellomyces werneckii* and other medically important dematiaceous fungi. *Journal of Clinical Microbiology* **25**: 944–946.
- Kurza O, Keith P, Hopp H, Hoog GS de, Abele-Horn M, Frosch M (2003). Post mortem isolation of *Pseudotaeniolina globosa* from a patient with aortic aneurysm. *Mycoses* **46**: 141–144.
- Küster FW, Thiel A (1990). Tabelle per le analisi chimiche e chimico-fisiche. Hopli Ed, Milano Italy, p. 303.
- Larena I, Salazar O, Gonzalez V, Julian MC, Rubio V (1999). Design of a primer for ribosomal DNA internal transcribed spacer with 5enhanced specificity for ascomycetes. *Journal of Biotechnology* **75**: 187–194.
- Leo F de, Urzi C, Hoog GS de (1999). Two *Coniosporium* species from rock surfaces. *Studies in Mycology* **43**: 77–85.
- Leo F de, Urzi C, Hoog GS de (2003). A new merismatic fungus, *Pseudotaeniolina globosa*. *Antonie van Leeuwenhoek* **83**: 351–360.
- Licinio P, Caligiore RB (2004). Inference of phylogenetic distances from DNA-walk divergences. *Physica A* **341**: 471–481.

- Ludwig W, Strunk O, Westram R, Richter L, Meier H, Buchner A, Lai T, Steppi S, Jobb G, Forster W, Brettske I, Gerber S, Ginhart AW, Gross O, Grumann S, Hermann S, Jost S, König S, Liss T, Lussmann S, May M, Nonhoff B, Reichel B, Strehlow R, Stamatakis A, Stuckmann N, Vilbig A, Lenke M, Ludwig T, Bode A, Schleifer KH (2004). ARB: a software environment for sequence data. *Nucleic Acids Research* **32**: 1363–1371.
- Marshall WA (1997). Seasonality in Antarctic airborne fungal spores. *Applied and Environmental Microbiology* **63**: 2240–2245.
- Matsumoto T, Matsuda T, McGinnis MR, Ajello L (1984). Clinical and mycological spectra of *Wangiella dermatitidis* infections. *Mycoses* **36**: 145–155.
- McGinnis MR (1979). Taxonomy of *Exophiala werneckii* and its relationship to *Microsporium mansonii*. *Sabouraudia* **17**: 145–154.
- Mendoza L, Karuppaiyil SM, Szanislo PJ (1993). Calcium regulates *in vitro* dimorphism in chromoblastomycotic fungi. *Mycoses* **36**: 157–164.
- Mok WY, Castello FP, Barreto da Silva MS (1981). Occurrence of *Exophiala werneckii* on salted freshwater fish *Osteoglossum bicirrhosus*. *Journal of Food Technology* **16**: 505–512.
- Nienow JA, Friedmann EI (1993). Terrestrial lithophytic (rock) communities. In: *Antarctic Microbiology* (Friedmann EI ed.) Wiley-Liss, New York, U.S.A.: 343–412.
- Nylander JAA (2004). *Mr Aic.pl*. Programme distributed by the author. Evolutionary Biology Centre, Uppsala University.
- Onofri S, Castagnola M, Rossi Espagnet S (1980). L'impiego della microscopia elettronica a scansione in micologia. *Micologia Italiana* **1**: 29–32.
- Onofri S, Pagano S, Zucconi L, Tosi S (1999). *Friedmanniomyces endolithicus* (Fungi, Hyphomycetes), anam. gen. and sp. nov., from continental Antarctica. *Nova Hedwigia* **68**: 175–181.
- Onofri S, Selbmann L, Hoog GS de, Grube M, Barreca D, Ruisi S, Zucconi L (2007). Evolution and adaptation of fungi at boundaries of life. *Advances in Space Research* **40**: 1657–1664.
- Oyey A van (2002). Theoretical aspects of pattern analysis. In: *New Approaches for the Generation and Analysis of Microbial Typing Data* (Dijkshoorn L, Towner KJ, Struelens M eds.). Elsevier, Amsterdam: 31–45.
- Page RDM (1996). TREEVIEW: An application to display phylogenetic trees on personal computers. *Computer Applications in the Biosciences* **12**: 357–358.
- Paolo WF Jr, Dadachova E, Mandal P, Casadevall A, Szanislo PJ, Nosanchuk JD (2006). Effects of disrupting the polyketide synthase gene *WdPKS1* in *Wangiella (Exophiala) dermatitidis* on melanin production and resistance to killing by antifungal compounds, enzymatic degradation, and extremes in temperature. *BMC Microbiology* **6**: 55–70.
- Plemenitaš A, Gunde-Cimerman N (2005). Cellular responses in the halophilic black yeast *Hortaea werneckii* to high environmental salinity. In: *Adaptation to life at high salt concentrations in Archaea, Bacteria, and Eukarya* (Gunde-Cimerman N, Oren A, Plemenitaš A eds.) Springer, Dordrecht, The Netherlands: 455–470.
- Prenafeta-Boldú FX, Summerbell RC, Hoog GS de (2006). Fungi growing on aromatic hydrocarbons: biotechnology's unexpected encounter with biohazard. *FEMS Microbiology Reviews* **30**: 109–130.
- Price PB (2000). A habitat for psychrophiles in deep Antarctic ice. *Proceedings of the National Academy of Sciences* **97**: 1247–1251.
- Ruibal C (2004). Isolation and characterization of melanized, slow-growing fungi from semiarid rock surfaces of central Spain and Mallorca. Dissertation, Universidad Autónoma de Madrid.
- Ruibal C, Platas G, Bills GF (2005). Isolation and characterization of melanized fungi from limestone formations in Mallorca. *Mycological Progress* **4**: 23–38.
- Ruibal C, Platas G, Bills GF (2008). High diversity and morphological convergence among melanised fungi from rock formations in the Central Mountain System of Spain. *Persoonia* **21**: 93–110.
- Ruisi S, Barreca D, Selbmann L, Zucconi L, Onofri S (2007). Fungi in Antarctica. *Reviews in Environmental Science and Biotechnology* **6**: 127–141.
- Sande W van de, Kat J de, Ahmed A, Verbrugh H, Belkum A van (2006). Melanin protects *Madurella mycetomatis* against itraconazole and ketoconazole, first-line treatment agents against mycetoma. *Nederlands Tijdschrift voor Medische Microbiologie* **14**: 520–521.
- Sanger F, Nicklen S, Coulson AR (1977). DNA sequencing with chain-terminating inhibitors. *Proceedings of the National Academy of Sciences* **74**: 5463–5467.
- Schnitzler N, Peltroche-Llacsahuanga H, Bestier N, Zündorf J, Lütticken R, Haase G (1999). Effect of melanin and carotenoids of *Exophiala (Wangiella) dermatitidis* on phagocytosis, oxidative burst, and killing by human neutrophils. *Infection and Immunity* **67**: 94–101.
- Schoch CL, Shoemaker RA, Seifert KA, Hambleton S, Spatafora JW, Crous PW (2006). A multigene phylogeny of the *Dothideomycetes* using four nuclear loci. *Mycologia* **98**: 1041–1052.
- Scott JA, Untereiner WA, Ewaze JO, Wong B, Doyle D (2007). *Baudoinia*, a new genus to accommodate *Torula compniacensis*. *Mycologia* **99**: 592–601.
- Selbmann L, Hoog GS de, Mazzaglia A, Friedmann EI, Onofri S (2005). Fungi at the edge of life: cryptoendolithic black fungi from Antarctic deserts. *Studies in Mycology* **51**: 1–32.
- Selbmann L, Onofri S, Fenice M, Federici F, Petruccioli M (2002). Production and structural characterization of the exopolysaccharide of the Antarctic fungus *Phoma herbarum* CCFEE 5080. *Research in Microbiology* **153**: 585–592.
- Sigler L, Carmichael JW (1974). A new acidophilic *Scytalidium*. *Canadian Journal of Microbiology* **20**: 267–268.
- Sikaroodi M, Lawrey JD, Hawksworth DL, DePriest PT (2001). The phylogenetic position of selected lichenicolous fungi: *Hobsonia*, *Illosporium*, and *Marchandiomyces*. *Mycological Research* **105**: 453–460.
- Starkey RL, Waksman SA (1943). Fungi tolerant to extreme acidity and high concentrations of copper sulphate. *Journal of Bacteriology* **45**: 509–519.
- Sterflinger K (1998). Temperature and NaCl-tolerance of rock-inhabiting meristematic fungi. *Antonie van Leeuwenhoek* **74**: 271–281.
- Sterflinger K, De Baere R, Hoog GS de, De Wachter R, Krumbein WE, Haase G (1997). *Coniosporium perforans* and *Coniosporium apollinis*, two new rock-inhabiting fungi isolated from marble in the Sanctuary of Delos (Cyclades, Greece). *Antonie van Leeuwenhoek* **72**: 349–363.
- Sterflinger K, Hoog GS de, Haase G (1999). Phylogeny and ecology of meristematic ascomycetes. *Studies in Mycology* **43**: 5–22.
- Taylor JE, Groenewald JZ, Crous PW (2003). A phylogenetic analysis of *Mycosphaerellaceae* leaf spot pathogens of *Proteaceae*. *Mycological Research* **107**: 653–658.
- Todaró F, Berdar A, Cavaliere A, Criseo G, Pernice L (1983). Gasophtalmus in blacksea bream (*Sprodylinosoma cantharus*) caused by *Sarcinomyces crustaceus* Lindner. *Mycopathologia* **81**: 95–97.
- Uden N van (1984). Temperature profiles of yeasts. *Advances in Microbiological Physiology* **25**: 195–251.
- Urzi C, Wollenzien U, Criseo G, Krumbein WE (1995). Biodiversity of the rock inhabiting microflora with special reference to black fungi and black yeasts. In: *Microbial Diversity and Ecosystem Function* (Allsopp D, Colwell RR, Hawksworth DL eds.). CAB International, Wallington, U.K.: 289–302.
- Vishniac HS (1987). Psychrophily and systematics of yeast-like fungi. In: *The expanding Realm of Yeast-like* (Hoog GS de, Smith MTH, Weijman ACM eds.). *Studies in Mycology* **30**: 389–402.
- Wheeler MH, Stipanovic RD (1985). Melanin biosynthesis and the metabolism of flavinol and 2-hydroxyjuglone in *Wangiella dermatitidis*. *Archives of Microbiology* **142**: 234–241.
- White TJ, Bruns T, Lee SB, Taylor JW (1990). Amplification and direct sequencing of fungal ribosomal RNA genes for Phylogenetics. In: *PCR Protocols, A guide to methods and applications* (Innis MA, Gelfand DH, Sninsky JJ, White TJ eds.), Academic, San Diego, U.S.A.: 315–322.
- Wollenzien U, Hoog GS de, Krumbein WE, Uijthof JMJ (1997). *Sarcinomyces petricola*, a new microcolonial fungus from marble in the Mediterranean basin. *Antonie van Leeuwenhoek* **71**: 281–288.
- Wollenzien U, Hoog GS de, Krumbein WE, Urzi C (1995). On the isolation of microcolonial fungi occurring on and in marble and other calcareous rocks. *Science of the Total Environment* **167**: 287–294.
- Yoshida S, Takeo K, Hoog GS de, Nishimura K, Miyaji M (1996). A new type of growth exhibited by *Trimmatostroma abietis*. *Antonie van Leeuwenhoek* **69**: 211–215.
- Zalar P, Hoog GS de, Gunde-Cimerman N (1999). *Trimmatostroma salinum*, a new species from hypersaline water. *Studies in Mycology* **43**: 57–62.
- Zucconi L, Pagano S, Fenice M, Selbmann L, Tosi S, Onofri S (1996). Growth temperature preferences of fungal strains from Victoria Land, Antarctica. *Polar Biology* **16**: 53–61.