

Biochemical Characterization of DNA Damage Checkpoint Complexes: Clamp Loader and Clamp Complexes with Specificity for 5' Recessed DNA

Viola Ellison and Bruce Stillman*

Cold Spring Harbor Laboratory, Cold Spring Harbor, New York, United States of America

The cellular pathways involved in maintaining genome stability halt cell cycle progression in the presence of DNA damage or incomplete replication. Proteins required for this pathway include Rad17, Rad9, Hus1, Rad1, and Rfc-2, Rfc-3, Rfc-4, and Rfc-5. The heteropentamer replication factor C (RFC) loads during DNA replication the homotrimer proliferating cell nuclear antigen (PCNA) polymerase clamp onto DNA. Sequence similarities suggest the biochemical functions of an RSR (Rad17–Rfc2–Rfc3–Rfc4–Rfc5) complex and an RHR heterotrimer (Rad1–Hus1–Rad9) may be similar to that of RFC and PCNA, respectively. RSR purified from human cells loads RHR onto DNA in an ATP-, replication protein A-, and DNA structure-dependent manner. Interestingly, RSR and RFC differed in their ATPase activities and displayed distinct DNA substrate specificities. RSR preferred DNA substrates possessing 5' recessed ends whereas RFC preferred 3' recessed end DNA substrates. Characterization of the biochemical loading reaction executed by the checkpoint clamp loader RSR suggests new insights into the mechanisms underlying recognition of damage-induced DNA structures and signaling to cell cycle controls. The observation that RSR loads its clamp onto a 5' recessed end supports a potential role for RHR and RSR in diverse DNA metabolism, such as stalled DNA replication forks, recombination-linked DNA repair, and telomere maintenance, among other processes.

Introduction

Proper duplication and maintenance of the genome are critical for ensuring genomic stability, defects in which are known to contribute to the onset and progression of cancer (Hartwell and Kastan 1994). To accomplish this, the cell harbors a complex set of pathways, termed cell cycle checkpoints, that monitor the status of the genome as the cell proceeds through the cell division cycle (Hartwell and Kastan 1994). Activation of these pathways by damaged DNA or incomplete DNA replication results in a cell cycle arrest in either the G1 or G2 phases or a delay in progression through S phase (Weinert 1998). Many of the components of these pathways have been defined genetically in yeast and have orthologs in higher eukaryotes (Zhou and Elledge 2000). In mammals, these include the proteins encoded by the *RAD17*, *RAD9*, *RAD1*, *HUS1*, *ATM*, *ATR*, *CHK*, *CHK2*, *RFC2*, *RFC3*, *RFC4*, and *RFC5* genes. These proteins function to affect three different outcomes in response to DNA damage, either cell cycle arrest that facilitates DNA repair, apoptosis, or senescence mediated by the p53 tumor-suppressor protein. The ATM, ATR, CHK1, and CHK2 proteins are serine/threonine protein kinases that phosphorylate a number of proteins, including p53 and CDC25A, in response to DNA damage, and defects in these kinases have been shown to be associated with and required for the progression of various human diseases (Kastan and Lim 2000; Abraham 2001).

Together with Rfc1, the Rfc2, Rfc3, Rfc4, and Rfc5 proteins are subunits of replication factor C (RFC; Table 1), a five-subunit protein complex that is required for DNA replication (Tsurimoto and Stillman 1989). RFC functions as a “clamp loader” to topologically link (or “load”) onto DNA the proliferating cell nuclear antigen (PCNA), a DNA polymerase processivity factor that functions by forming a sliding clamp

on DNA (Waga and Stillman 1998b). The function of RFC has been recapitulated in vitro with both native and recombinant protein (Waga and Stillman 1994; Cai et al. 1997; Ellison and Stillman 1998) and has been shown to require ATP, a DNA substrate that mimics a DNA replication-primed template, and the eukaryotic single-strand DNA-binding protein, replication protein A (RPA). The Rfc1 (the largest subunit of the complex), Rfc2, Rfc3, Rfc4, and Rfc5 proteins share a high degree of sequence similarity, manifested as eight conserved sequence motifs (RFC boxes) that are also found in Rad17 and in *Saccharomyces cerevisiae* Ctf18/Chl12, a protein required for the establishment of sister chromatid cohesion (Cullmann et al. 1995; Griffiths et al. 1995; Mayer et al. 2001). Recently, another member of this family of proteins, Egl1, has also been shown to associate with the Rfc2–Rfc5 subunits

Received May 9, 2003; Accepted August 23, 2003; Published November 17, 2003
DOI: 10.1371/journal.pbio.0000033

Copyright: ©2003 Ellison and Stillman. This is an open-access article distributed under the terms of the Public Library of Science Open-Access License, which permits unrestricted use, distribution, and reproduction in any medium, provided the original work is properly cited.

Abbreviations: Ab, antibody; ATM, ataxia telangiectasia mutated; ATP, adenosine triphosphate; ATP_γS, adenosine 5'-O-3'-thiotriphosphate; ATR, ataxia telangiectasia mutated and Rad3-related; CHAPS, 3-[(3-cholamidopropyl)-dimethylammonio]-1-propanesulfonate; EDTA, ethylenediaminetetraacetate; IP, immunoprecipitate; LB, loading buffer; nt, nucleotide; PAGE, polyacrylamide gel electrophoresis; PCNA, proliferating cell nuclear antigen; Q, quaternary ammonium; RFC, replication factor C; RHR, Rad9–Hus1–Rad1 complex; RHRA, Rad9–Hus1–Rad1-loading activity; RPA, replication protein A; RSR, Rad17–Rfc2–5; SSB, single-strand DNA-binding protein; Wb, Western blotting

Academic Editor: James E. Haber, Brandeis University

* To whom correspondence should be addressed. Mailing address: Cold Spring Harbor Laboratory, Cold Spring Harbor, New York 11724, United States of America. E-mail: stillman@cshl.edu



Table 1. Clamp and Clamp Loader Protein Complexes

Name of Protein Complex ^a	Names of Subunits by Species		
	<i>H. sapiens</i>	<i>S. pombe</i>	<i>S. cerevisiae</i>
Clamps			
PCNA (DNA polymerase clamp)	PCNA	pcn1	Pol30
RHR (checkpoint clamp)	RAD1	rad1	Rad17
	HUS1	hus1	Mec3
	RAD9	rad9	Ddc1
Clamp Loaders			
RFC (PCNA clamp loader)	RFC1	rfc1	Rfc1
	RFC2	rfc2	Rfc2
	RFC3	rfc3	Rfc3
	RFC4	rfc4	Rfc4
	RFC5	rfc5	Rfc5
RSR (RHR clamp loader)	RAD17	rad17	Rad24
	RFC2	rfc2	Rfc2
	RFC3	rfc3	Rfc3
	RFC4	rfc4	Rfc4
	RFC5	rfc5	Rfc5

Accession numbers are listed in the Supporting Information section at the end of the paper.

^aFunction is shown in parentheses.

DOI: 10.1371/journal.pbio.0000033.t001

(referred to as Rfc2–5), although its biochemical function is not known (Bellaoui et al. 2003; Ben-Aroya et al. 2003).

Although the biochemical activities of RFC and the cell cycle checkpoint kinases have been described extensively, our knowledge of the biochemical activities of the Rad17, Rad9, Hus1, and Rad1 proteins is limited. The Rad9, Rad1, and Hus1 proteins share some sequence similarity with the protomer of the homotrimeric PCNA (Thelen et al. 1999) and thus have been predicted to adopt a similar secondary structure (Venkovas and Thelen 2000). Biochemical analyses of these proteins from both yeast and human cells suggest that they form a heterotrimeric complex (Kostrub et al. 1998; Paciotti et al. 1998; Kondo et al. 1999; St Onge et al. 1999; Volkmer and Karnitz 1999; Caspari et al. 2000; Wolkow and Enoch 2002), and the recombinant proteins have been demonstrated to form a stable complex (Burtelov et al. 2001; Lindsey-Boltz et al. 2001). Studies of *Schizosaccharomyces pombe* rad17 and its counterpart in *S. cerevisiae*, Rad24, have shown that they exist in a complex with the four small subunits of RFC (Rfc-2, Rfc-3, Rfc-4, and Rfc-5, exclusive of Rfc1) (Green et al. 2000; Kai et al. 2001). A complex of human RAD17 with the four small subunits of human RFC has been purified from Sf9 cells and reported to possess DNA-binding and ATPase activity (Lindsey-Boltz et al. 2001).

The mechanism by which the Rad9, Hus1, Rad1, Rad17, and RFC subunits mediate the checkpoint response is unclear, but one hypothesis is that the Rad17–Rfc2–Rfc3–Rfc4–Rfc5 (hereafter called RSR; Table 1) complex functions mechanistically similarly to RFC to load the PCNA-like protein complex Rad9–Hus1–Rad1 (hereafter called RHR) onto sites of damaged DNA in vivo. Recently, this hypothesis was investigated using recombinant human RSR and RHR

purified from insect cells (Bermudez et al. 2003) and the orthologous budding yeast protein complexes purified from *S. cerevisiae*, Rad24–Rfc2–5 and Ddc1–Mec3–Rad17 (Majka and Burgers 2003). Although the native *S. cerevisiae* RHR (Ddc1–Mec3–Rad17) was shown to form a sliding clamp on gapped circular DNA in an ATP hydrolysis- and RSR-dependent manner, the recombinant human RHR complex, in contrast, was found to be incapable of forming a sliding clamp on nicked circular DNA. However, the recombinant protein could interact with recombinant RSR, a reaction that was observed to be nucleotide hydrolysis independent.

In a series of studies to characterize the biochemistry of DNA replication fork proteins, we were comparing the biochemical activities of the putative checkpoint clamp loader and clamp complexes with the well-characterized RFC/PCNA DNA replication fork components. Toward this goal, the human RSR complex was purified from the human colorectal carcinoma cell line RKO and tested to see whether it could load a recombinant version of the RHR complex onto DNA. We show that the purified RSR complex can catalyze the loading of the RHR complex onto DNA in vitro in an ATP-, RPA-, and DNA structure-specific manner, and once loaded, the RHR complex, like PCNA, forms a sliding clamp. Although sharing properties similar to RFC, the RSR loaded its clamp onto a DNA substrate of the opposite polarity—a recessed 5' end instead of a recessed 3' end. This fundamental difference between the clamp loaders in vitro dictates that the two clamp loaders function in mechanistically distinct biochemical pathways in vivo and, consequently, provides a framework for further investigation of the biochemical function of the RSR and RHR complexes in various DNA maintenance pathways.

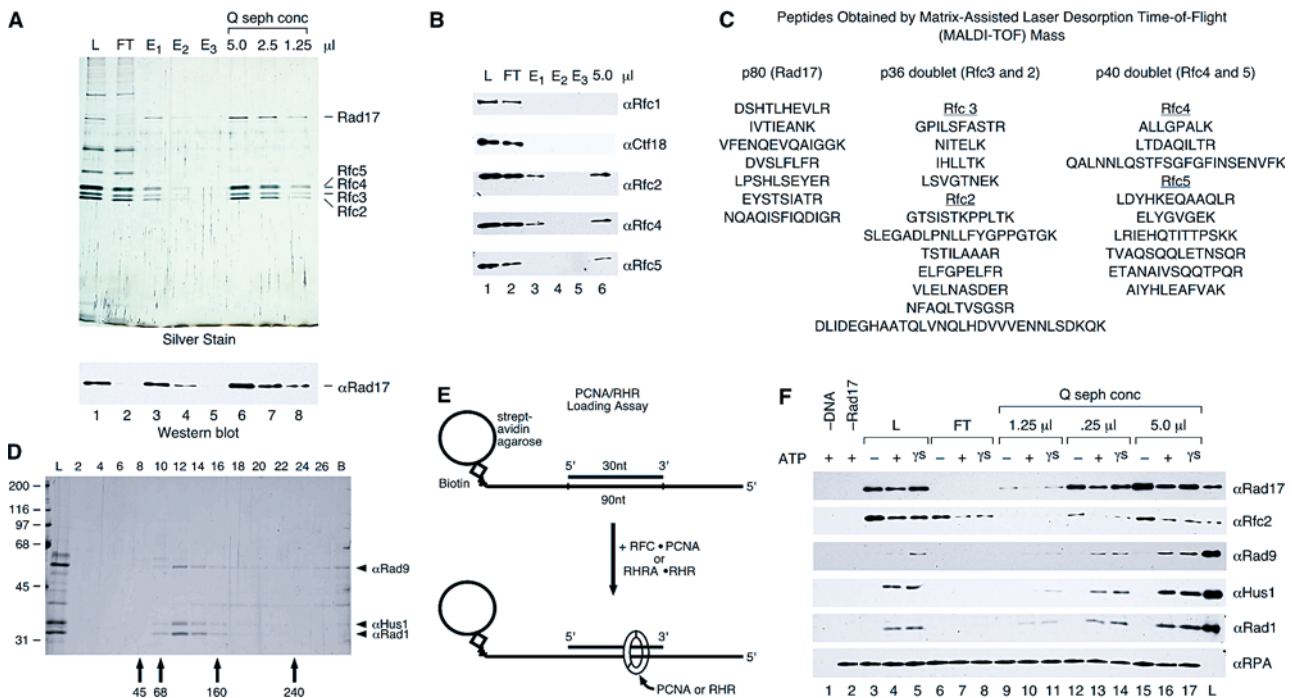


Figure 1. The Purified Human RSR Complex Can Load the RHR Complex onto DNA In Vitro

(A) RSR was purified from the Rfc2 Ab affinity column eluate by anti-Rad17 Ab affinity chromatography, and the peptide-eluted material was concentrated by Q-sepharose chromatography. An equivalent volume (5 μl) of the load onto the anti-Rad17 column (lane 1, labeled L), the flowthrough from the column (lane 2, labeled FT), each peptide elution fraction (lanes 3–5), and the indicated amounts of the concentrated, purified complex (lanes 6–8) were analyzed by silver staining and Wb for Rad17.

(B) The same fractions present in the silver-stained gel in (A) were analyzed by Wb for Rfc1, Ctf18, Rfc2, Rfc4, and Rfc5, and the lanes are as loaded and numbered in (A).

(C) Peptide sequences for the proteins present in the purified Q-sepharose fraction.

(D) Purification of the RHR. RHR was purified from *E. coli* by Talon affinity, Q-sepharose, and phosphocellulose chromatography and by glycerol gradient sedimentation (shown here). The load onto the gradient (lane L) and fractions (corresponding to lane numbers) as well as any material in the pellet (lane B) were analyzed by silver staining (shown) and Wb (not shown). Arrows indicate the sedimentation position of protein standards from a gradient prepared in parallel.

(E) Assay for RHR and PCNA loading. RHR and PCNA loading were examined by monitoring the binding of the proteins to a DNA-RPA complex bound to streptavidin-agarose beads by Wb of the bead-bound fractions. The DNA substrate consist of a 90 nucleotide (nt) 3' biotinylated template and 30 nt primer positioned in the center of the template, resulting in a substrate with 30 nt single-stranded recessed 5' and 3' ends to which RPA was bound.

(F) RSR is sufficient to load RHR onto DNA in vitro. Reactions were performed as described in the Materials and Methods, and the bead-precipitated products were analyzed by Wb for Rad17, Rfc2, Rad9, Hus1, and Rad1. The fractions from the purification shown in (A) were assayed for RHR-loading activity. Lanes represent reactions that contained the same amount of the anti-Rad17 Ab column load (lanes 1, 3, 4, and 5), flowthrough (lanes 6–8), and the Q-sepharose concentrated protein (lanes 9–17) as shown in the silver-stained gel in (A), or no source of Rad17 (buffer only, lane 2). All reactions contained 5' and 3' recessed primer-template DNA-RPA complex bound to beads (except for that in lane 1, which contained beads alone), 1 pmol of RHR complex, and the indicated nucleotide cofactor (ATP: lanes 1, 2, 4, 7, 10, 13, and 16; ATPγS: lanes 5, 8, 11, 14, and 17) or no nucleotide (lanes 3, 6, 9, 12, and 15). The lane labeled L represents 20% of the input of RHR and anti-Rad17 column load used in the reaction.

DOI: 10.1371/journal.pbio.0000033.g001

Results

The RSR Complex Purified from Human Cells Can Load the RHR Complex onto DNA In Vitro

Using anti-Rfc2 antibody (Ab) affinity chromatography followed by Q-sepharose chromatography, a RHR-loading activity that contained RFC, Rad17, and Ctf18, as well as several other proteins, was purified from human RKO cell extracts (V. E. and B. S., unpublished data). This partially purified fraction was found to load RHR onto primer template DNA substrates in a nucleotide-dependent manner, and RHR-loading activity required the Rad17 protein, since removal of Rad17 (and with it some Rfc2–5) using a monoclonal Ab against Rad17 rendered the fraction inactive. In contrast, removal of RFC using a monoclonal Ab against its

Rfc1 subunit did not impair RHR loading (data not shown). To further define the components of the RHR-loading activity, an Ab against a Rad17 C-terminal peptide was developed that was able to immunoprecipitate (IP) specifically Rad17 along with the four small subunits of RFC, Rfc2, Rfc3, Rfc4, and Rfc5, but not the largest subunit, Rfc1 (data not shown). Coimmunoprecipitate of Rfc2–5 was not observed with preimmune serum, nor when the anti-Rad17 Ab was preincubated with the Rad17 peptide that was used as the antigen, indicating that recovery of the precipitated proteins required the epitope recognized by the Ab (data not shown).

Using the Ab described above, Rad17 was purified from the partially purified fraction by anti-Rad17 affinity followed by Q-sepharose chromatography (Figure 1A). In addition to

Rad17 itself, copurification of Rfc2–5 was confirmed by Western blotting (Wb) and mass spectrometry analyses (Figure 1B and 1C, respectively). Thus, using sequential Rfc2 and Rad17 Ab affinity chromatography, we identified a highly purified RSR complex (Rad17 and Rfc2–5; see Table 1 for yeast orthologs). Other proteins in the starting fraction, including Rfc1 and Ctf18, appeared to be components of unique Rfc2-containing complexes, for these proteins were recovered in the anti-Rad17 column flowthrough and therefore did not copurify with Rad17.

A recombinant version of RHR was purified from *Escherichia coli* using Talon affinity, Q-sepharose, phosphocellulose chromatography, and glycerol gradient sedimentation (Figure 1D). From glycerol gradient sedimentation and gel filtration analyses of combinations of Rad9, Hus1, and Rad1 interactions, as well as individual subunits, we determined the purified complex to be a heterotrimer (V. E. and B. S., unpublished data). The purified RHR was used as a substrate in the loading assay depicted in Figure 1E. A primer–template DNA substrate containing biotin located at the 3' end of the template was bound to streptavidin–agarose beads, after which RPA was incubated with the DNA-bound beads to form an RPA-coated primer–template DNA complex. In this assay, previously developed to characterize PCNA loading by RFC (Waga and Stillman 1998a), RPA functioned in part to prevent the clamp from sliding off the DNA ends, as it has been shown that both the PCNA and *E. coli* β subunit are incapable of sliding on RPA- or single-strand DNA-binding protein (SSB)-coated single-stranded DNA (Yao et al. 2000a). After incubation with various fractions containing RSR, recovery of RHR with the beads, as well as the Rad17 subunit of RSR, was analyzed by Wb.

Using the same relative amounts of each fraction present in the silver-stained gel (Figure 1A), the affinity-purified RSR was analyzed for RHR loading (Figure 1F). The initial fraction that was loaded on to the Rad17 affinity column was functional, as recovery of RHR with the beads was not observed in reactions that lacked DNA (Figure 1F, lane 1), the Rad17-containing fraction (Figure 1F, lane 2), or nucleotide (Figure 1F, lane 3). Consistent with a requirement for Rad17 for RHR loading in vitro, the flowthrough from the affinity column that lacked Rad17 but contained other Rfc2-containing complexes (such as RFC) was inactive (Figure 1F, lanes 6–8). The purified RSR was capable of loading RHR onto DNA in a nucleotide-dependent manner, similar to the starting material (compare Figure 1A, lanes 1 and 7; Figure 1F, lanes 3–5 and 12–14). The four small RFC subunit complex, which by itself does not bind DNA nor load RHR and PCNA onto DNA in this assay (data not shown), was also detected on DNA when Rad17 was present (Figure 1F; see also Figure 3B), further suggesting that Rfc2–5 functions in a complex with Rad17. Thus, a complex of RSR that was purified from human cells could load the RHR onto DNA in vitro.

RFc is a DNA-activated ATPase that is preferentially activated by primer–template DNAs (Tsurimoto and Stillman 1990). When RSR was examined along with an equivalent amount of purified recombinant RFC for ATPase activity in the presence of the primer–template substrate (Figure 2), or poly(dA):oligo(dT) (data not shown), the ATPase activity of the complex was observed reproducibly to be stimulated no more than 2-fold by DNA. This was in sharp contrast to

similar amounts of the RFC ATPase that were stimulated by DNA to greater than 10-fold (Cai et al. 1997; Podust and Fanning 1997; Ellison and Stillman 1998). The observation, also reported for the yeast checkpoint clamp loader, was surprising, particularly since the ATPase activities of both the Rfc2–5 and the Rfc2–4 subcomplexes are significantly stimulated by DNA (Podust et al. 1998; V. E. and B. S., unpublished data). These data suggest that within the RSR complex the Rad17 subunit altered the ATPase cycle of the Rfc2–5 subunits.

The RFC and RSR Clamp Loaders Share Similar Requirements, but Have Distinct DNA Substrate Specificities for Activity

From extensive characterization of the *E. coli*, T4 phage and eukaryotic replication fork assembly processes, loading of all the polymerase processivity clamps (*E. coli* β subunit, T4 phage, gp45, and PCNA) by their respective clamp loaders (γ complex, gp44/62, and RFC) has been demonstrated to be a nucleotide-dependent, multistep reaction that can be divided into two general stages (Berdis and Benkovic 1997; Hingorani and O'Donnell 1998; Mossi and Hubscher 1998; Waga and Stillman 1998a; Hingorani et al. 1999; Turner et al. 1999; Gomes et al. 2001; Jeruzalmi et al. 2001a, 2001b; Pietroni et al. 2001). The first stage, the formation of a clamp–clamp loader–DNA ternary complex, requires clamp loader ATP binding that can be substituted by the nonhydrolyzable ATP analog, ATP γ S. The second step, the release or “clamping” of the protein clamp onto the DNA and the release of the clamp loader from the DNA, requires clamp loader-mediated nucleotide hydrolysis that is stimulated by DNA. In addition, loading of the clamp requires that the DNA substrate possess a DNA replication primer–template structure bound by the single-stranded DNA-binding protein (SSB, gp32, or RPA) (Tsurimoto and Stillman 1991; Tinker et al. 1994; Reems et al. 1995; Kelman et al. 1998). We asked whether the aforementioned prerequisites were also necessary for RSR activity by examining RHR loading onto substrates that lacked either a primer or RPA. Similar to RFC, the RSR-loading activity was both primer- and RPA-dependent, for in the absence of either the primer or RPA, loading of RHR was undetectable (Figure 3A and 3B, lanes 11 and 7, respectively). Furthermore, ternary complex formation by RSR was not observed in the absence of a primer (Figure 3B, lane 12), suggesting that the RHR loading requires a primer and template DNA, as observed for RFC (Figure 3A, lane 12).

The primer–template substrate used had both a recessed 5' end and a recessed 3' end because the primer was located in the center of the template. Although it is well established that RFC loads PCNA onto DNA containing either a recessed 3' end or a nicked double-strand DNA, usage of alternative DNA structures as substrates, such as those with recessed 5' ends, has not been examined (Mossi and Hubscher 1998). Hence, we tested the ability of RFC and RSR to load their respective clamps onto DNA containing either a recessed 5' end or a recessed 3' end. As expected, we observed a requirement for a DNA substrate with a recessed 3' end for PCNA loading by RFC; however, loading onto a recessed 5' end DNA substrate was essentially undetectable (Figure 4A, lanes 12 and 13). Unexpectedly, however, RSR possessed the opposite substrate specificity (Figure 4B), since a DNA substrate with a recessed 5' end was discovered to be a much better substrate for RHR

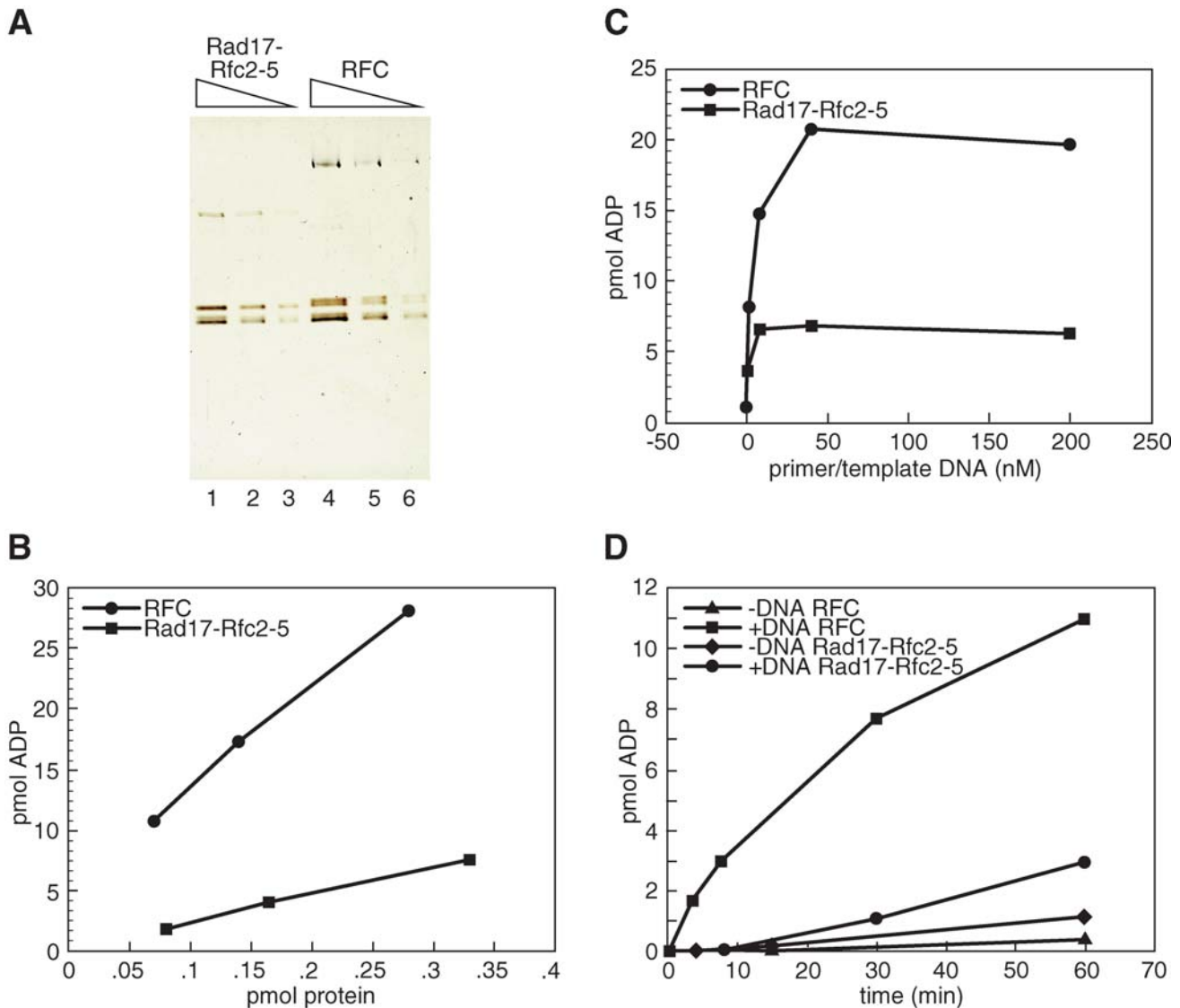


Figure 2. Purified RSR Is an ATPase That Is Poorly Stimulated by DNA

(A) Titration of purified RSR and RFC. Visualized by SDS-PAGE and silver staining were 0.3, 0.15, and 0.075 pmol of RSR (lanes 1–3) and RFC (lanes 4–6).

(B) ATPase activity of the indicated amount of either RSR (squares) or RFC (circles) was measured after 60 min in the presence of 200 nM 5' and 3' recessed primer–template DNA.

(C) ATPase activity of either 0.3 pmol of RSR (squares) or 0.30 pmol of RFC (circles) was analyzed after a 60 min incubation in the absence or presence of 1.6 nM, 8 nM, 40 nM, or 200 nM 5' and 3' recessed primer–template DNA.

(D) ATPase activity of 0.15 pmol of RSR (diamonds and circles) or 0.15 pmol of RFC (triangles and squares) in the absence of DNA (diamonds and triangles) or presence of 200 nM 5' and 3' recessed primer–template DNA was measured after either a 3.5, 7.5, 15, 30, or 60 min incubation. All reactions were performed as described in the Materials and Methods.

DOI: 10.1371/journal.pbio.0000033.g002

loading (Figure 4B, lanes 11 and 12) compared to the recessed 3' end substrate (Figure 4B, lanes 8 and 9). Thus, RSR and RFC loaded their respective clamps onto different DNA structures, relegating these clamp loaders to distinct DNA replication and repair reactions in the cell.

RHR Is a Sliding Clamp

Loading of the ring-shaped homotrimeric PCNA results in the topological linking of the complex to the DNA, and because of the absence of specific contacts with the DNA, the PCNA can freely translate or “slide” on duplex DNA (Kuriyan and O'Donnell 1993; Krishna et al. 1994). If loaded onto a

circular substrate, the PCNA is trapped on the DNA, resulting in a very stable PCNA–DNA complex. However, loading of PCNA onto linear DNA yields a very unstable PCNA–DNA complex because the PCNA can slide off the DNA unless the ends are blocked. In the assay described in Figure 1E, PCNA sliding off the substrate was presumably blocked by RPA binding on the single-stranded region of the DNA template (or 5' end) and the biotin–streptavidin–agarose bead complex at the double-stranded end of template (or 3' end, distal to RPA).

To test whether PCNA was topologically linked in this assay, we compared loading onto recessed 3' end primer–

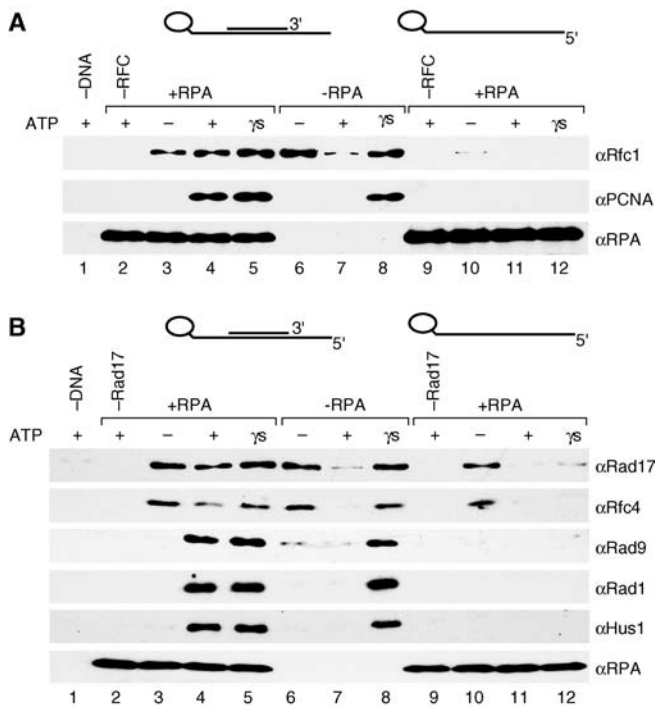


Figure 3. RHR Loading Is Nucleotide, Primer, and RPA Dependent

Loading reactions represented in (A) were performed with 2 pmol of PCNA, 0.25 pmol of RFC, and the 5' and 3' recessed primer-temple DNA-RPA complex bound to beads, whereas those in (B) were performed with 1 pmol of RHR, 0.25 pmol of RSR, and the 5' and 3' recessed primer-temple DNA-RPA complex bound to beads. Reactions were performed as described in the Materials and Methods, and the bead-precipitated proteins were then analyzed by Wb for PCNA, RFC, Rad17, Rad9, Hus1, and Rad1, respectively. In both (A) and (B), lanes 2 and 9 represent reactions that contained the clamp alone (PCNA in [A], RHR in [B]), and all reactions represented in lanes 1, 3–8, and 10–12, contained both the clamp and its corresponding clamp loader. In both (A) and (B), reactions were performed in the absence of nucleotide (lanes 3, 6, and 9) or in the presence of ATP (lanes 1, 2, 4, 7, 9, and 11) or ATP γ S (lanes 5, 8, and 12). All reactions contained RPA except those in lanes 6–8, and all reactions contained primer-temple DNA bound beads except that in lane 1 (beads without DNA) and those in lanes 6–9 (template DNA alone bound beads).

DOI: 10.1371/journal.pbio.0000033.g003

template DNAs that contained the biotin-linked bead at either the double-stranded end (bead distal to RPA) or at the single-stranded end of the template (bead proximal to RPA) (Figure 5A). In contrast to the former substrate, the latter possesses one unblocked or “free” end that would allow the PCNA to slide off the duplex DNA. Thus, if the PCNA was topologically linked to the DNA, very poor recovery of the clamp on this substrate was expected. As predicted, although efficiently recovered on the DNA with the biotin bead complex distal to RPA (Figure 5A, lane 4; see also the experiment presented in Figure 4), PCNA was not recovered when the biotin bead complex was placed at the single-stranded end of the template (proximal to RPA) (Figure 5A, lane 8). Placement of the biotin at the single-stranded end of the DNA did not simply inhibit RFC activity, for ternary complex formation on both substrates in the presence of ATP γ S was observed with similar efficiencies (Figure 5A, lanes 5 and 9). In addition, both the 5' biotin and 3' biotin substrates were capable of activating the ATPase activity of

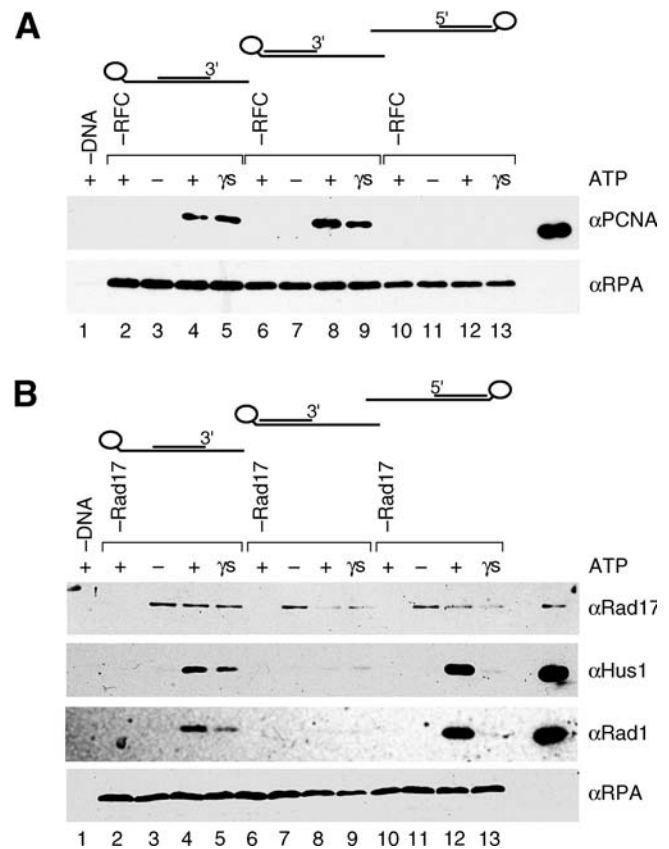


Figure 4. Opposite DNA Substrate Preference Exhibited by RFC and RSR

Loading reactions in (A) and (B) were performed as described in the Materials and Methods with DNA substrates bound to beads, and recovery of proteins with the beads was analyzed by Wb for the indicated proteins. Lanes represent reactions using either a 5' and 3' recessed primer-temple DNA (lanes 2–5), a 3' recessed primer-temple DNA (lanes 6–9), a 5' recessed primer-temple DNA (lanes 10–13), or no DNA (lane 1). All reactions contained RPA and the indicated nucleotide (ATP: lanes 1, 2, 4, 6, 8, 10, and 12; ATP γ S: lanes 5, 9, and 13) or no nucleotide (lanes 3, 7, and 11). In (A), all reactions contained 0.25 pmol of RFC (except for those in lanes 2, 6, and 10) and 2 pmol of PCNA. In (B), all reactions contained 0.25 pmol of RSR (except for those in lanes 2, 6, and 10) and 1 pmol of RHR. In both (A) and (B), 20% of the input in each reaction is represented in the last lane in each panel.

DOI: 10.1371/journal.pbio.0000033.g004

RFC with the same efficiency (data not shown), again indicating no specific impairment of RFC function by the 5' biotin substrate. We concluded, therefore, that the inability to recover the PCNA by unblocking one end of the substrate was due to PCNA sliding off the duplex DNA after it was loaded. Thus, in this assay, the PCNA was topologically linked to the DNA.

When RHR was analyzed for sliding clamp formation, poor recovery of the complex was observed on the DNA substrate with only one end of the DNA blocked (Figure 5B, lane 8) compared to that with both ends of the substrate blocked (Figure 5B, lane 4; see also the experiment presented in Figure 4). In the presence of ATP, it is probable that multiple RHR complexes were loaded onto the duplex DNA that was blocked with a biotin-linked bead (Figure 5B, lane 4), whereas multiple RHR complexes loaded onto the same substrate with a free duplex DNA end failed to accumulate on the DNA

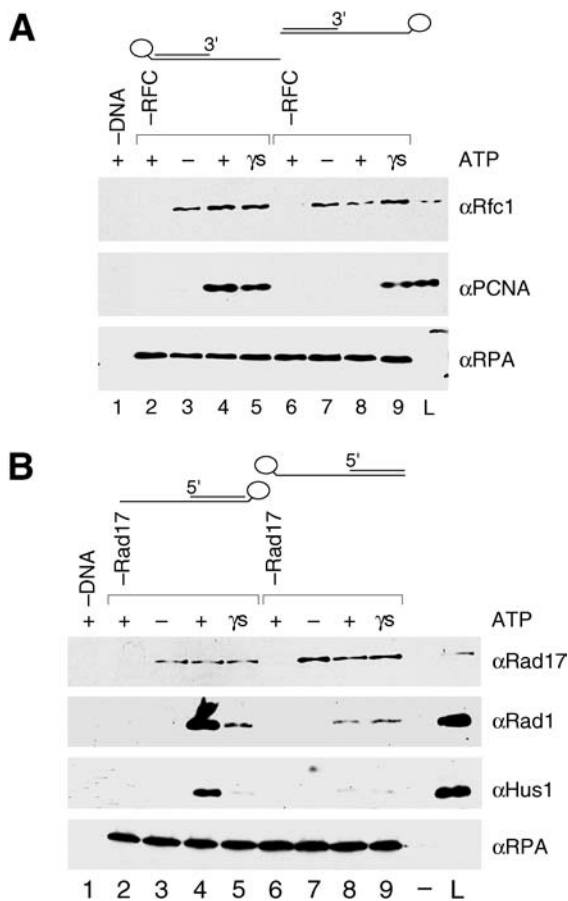


Figure 5. RHR Forms a Sliding Clamp on DNA

Loading reactions in the experiments represented in (A) and (B) were performed as described in the Materials and Methods using either recessed 5' or recessed 3' primer-template DNA-RPA substrates bound to beads, and then recovery of proteins with the beads was analyzed by Wb for the indicated proteins. In each experiment using template strands biotinylated at either the 5' or 3' end, either both ends of the DNA substrate (reactions represented in lanes 2–5) or only one end of the substrate (reactions represented in lanes 6–9) was blocked by selectively positioning the bead relative to RPA—either at the opposite end of the DNA (distal, therefore both ends blocked) or at the same end of the DNA (proximal, therefore only one end blocked). In (A), lanes represent reactions that contained 0.25 pmol of RFC (except for those in lanes 2 and 6), 2 pmol of PCNA, and either a 3' recessed primer/3' biotin template DNA (bead distal to RPA; lanes 2–5), a 3' recessed primer/5' biotin template DNA (bead proximal to RPA; lanes 6–9), or no DNA (lane 1). In (B), lanes represent reactions that contained 0.25 pmol of RSR (except for those in lanes 2 and 6), 1 pmol of RHR, and either a 5' recessed primer/5' biotin template (bead distal to RPA; lanes 2–5), a 5' recessed/3' biotin template (bead proximal to RPA; lanes 6–9) or no DNA (lane 1). In both (A) and (B), reactions were performed in the absence (lanes 3 and 7) or presence of nucleotide (ATP: lanes 2, 4, 6, and 8; ATPγS: lanes 5 and 9), and 20% of the reaction input was loaded in the lane labeled L. DOI: 10.1371/journal.pbio.0000033.g005

because they slid off (Figure 5B, lane 8). In contrast, in the presence of ATPγS ternary complex formation, but not clamp loading on both substrates occurred with similar efficiencies and therefore appeared to be unaffected by the location of the biotin bead complex (Figure 5B, lanes 5 and 9). Thus, when loaded onto DNA in the presence of ATP, like the PCNA clamp, RHR appeared to be topologically linked and formed a sliding clamp.

Loading of the Human Clamps Are Specifically Stimulated by Human RPA

RPA is a heterotrimeric, single-strand DNA-binding protein that is required for DNA replication, repair, and recombination in vivo and in vitro and has been shown to modulate the activities of proteins in each of these processes (Wold 1997 and references therein). To test whether RPA plays a role in clamp loading, RFC and RSR activities were analyzed in the presence of either human or yeast RPA. We surmised that if the only function of RPA in our assay was to block the ends of the substrate and thus prevent clamp sliding, then clamp loading should be supported with equal efficiency by yeast and human RPA. However, if RPA also functioned to stimulate clamp-loading activity, this activity may involve species-specific protein-protein interactions, given that yeast RPA does not substitute for human RPA in in vitro assays for either SV40 DNA replication or nucleotide excision repair (Wold 1997). Indeed, mutations in *S. cerevisiae* Rfc4 display allele-specific interactions with mutations in *RPA1*, which encodes the largest subunit of RPA (Kim and Brill 2001), and human RFC has been shown to directly interact with human RPA (Yuzhakov et al. 1999).

When PCNA loading was analyzed in the presence of saturating levels of either yeast (Figure 6A, lanes 3–5) or human RPA (Figure 6A, lanes 6–9), recovery of the PCNA was poorer in the presence of yeast RPA compared to human RPA. Inefficient recovery of the PCNA was not due to an inability of yeast RPA to prevent human PCNA clamp sliding, because usage of alternative recessed 3' end substrates in this assay permitted efficient and comparable PCNA recovery in the presence of yeast and human RPA (V. E. and B. S., unpublished data). Hence, recovery of the PCNA in the presence of yeast RPA was DNA structure specific and not due to an intrinsic (1) inability of yeast RPA to prevent human PCNA clamp sliding nor (2) human RFC inhibitory activity of yeast RPA. Therefore, we concluded that RPA performed two functions in our assay: first, it prevented the clamp from sliding off the DNA, and second, it specifically stimulated the activity of RFC on canonical primer-template recessed 3' end DNA substrates. Likewise, when yeast RPA was tested for the ability to support RHR loading (Figure 6B), RSR activity was found to be preferentially stimulated by human RPA (Figure 6B, lanes 5 and 6) compared to yeast RPA (Figure 6B, lanes 3 and 4). Thus, the clamp loader functions of both RFC and RSR were modulated by interactions with RPA.

Discussion

RSR Is a Clamp Loader

The potential functional similarities between RSR and RFC and between the RHR subunits and the PCNA subunit, respectively, have been noted (Sugimoto et al. 1997; Shimomura et al. 1998; Thelen et al. 1999). Specific mutations in *S. cerevisiae* Rfc5 were reported to result in a cell cycle checkpoint defect in response to DNA damage, and Rfc5 was found to interact both genetically and physically with Rad24, the large subunit of RSR in *S. cerevisiae* (Sugimoto et al. 1997; Shimomura et al. 1998). Green et al. (2000) subsequently demonstrated copurification of Rad24 and Rfc2–5 and established that Rad24 formed an unique complex with Rfc2–5 exclusive of Rfc1. The *S. pombe* RHR subunits were first found to physically interact with each other and later shown

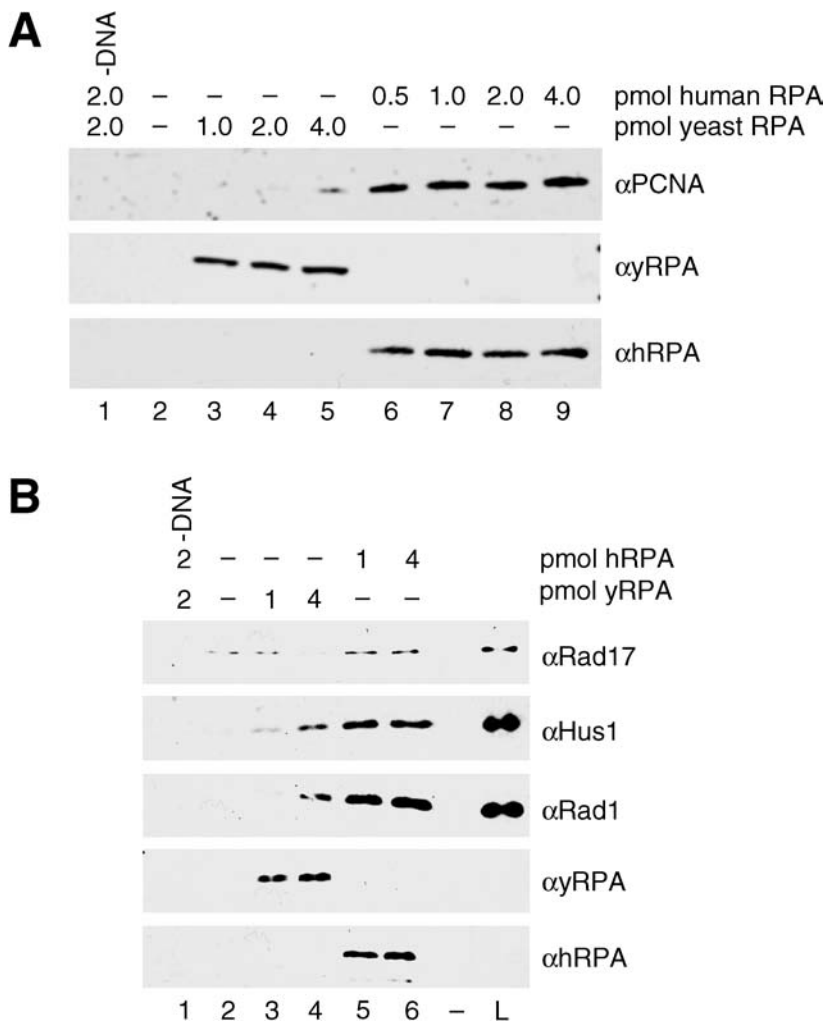


Figure 6. PCNA and RHR Loading Are Specifically Stimulated by Human RPA

In both (A) and (B), lanes represent loading reactions performed as described in the Materials and Methods with either 5' recessed or 3' recessed primer-template DNA-RPA complex bound to beads, and recovery of proteins with the beads was analyzed by Wb for the indicated proteins. In (A), PCNA loading was assayed in the absence of RPA (lane 2) or in the presence of the indicated amounts of either yeast RPA (lanes 3–5) or human RPA (lanes 6–9). All reactions contained 3' recessed primer-template DNA (except for that in lane 1), 2 pmol of PCNA, 0.25 pmol of RFC, and ATP. In (B), RHR loading was assayed in the absence of RPA (lane 2) or in the presence of the indicated amounts of either yeast RPA (lanes 3 and 4) or human RPA (lanes 5 and 6). All reactions contained 5' recessed primer-template DNA (except for that in lane 1), 1 pmol of RHR complex, 0.25 pmol of RSR, and ATP.

DOI: 10.1371/journal.pbio.0000033.g006

to be PCNA-like proteins from secondary structure modeling (Kostrub et al. 1998; Venclovas and Thelen 2000). Although protein-protein interactions between the PCNA-like proteins and Rad17/Rad24 and RFC subunits have been described by several investigators (Kostrub et al. 1998; Kondo et al. 1999; Volkmer and Karnitz 1999; Green et al. 2000; Kai et al. 2001; Lindsey-Boltz et al. 2001), the biochemical function of these proteins has remained elusive.

In this report, we have presented direct evidence that RSR functions biochemically quite similarly to its archetype RFC. The purified RSR, isolated from human cells, was capable of loading the heterotrimeric RHR complex onto DNA in an ATP-, RPA-, and DNA structure-specific manner. Although the reactions executed by the RFC and RSR clamp loaders are similar, they require DNA substrates of the opposite polarity to load their respective clamps: RFC utilizes a recessed 3' end, whereas RSR prefers a recessed 5' end. The use of a recessed

3' end by RFC and PCNA makes sense since PCNA is a DNA polymerase clamp protein and the DNA polymerase utilizes the 3'-OH as a primer for DNA synthesis. The new observations provide insights into the function of RSR in the DNA damage-response pathway and suggest that the RHR clamp is not used by DNA polymerases on primer-template structures. They also suggest that the Rfc1 and Rad17 subunits confer structure-specific DNA binding and ATPase properties on their respective clamp loader complexes.

We have also characterized a recombinant source of the RSR complex purified from Sf9 cells and found it to be inactive. Recently, a recombinant source of the RSR complex also purified from Sf9 cells was reported to possess RHR-loading activity (Bermudez et al. 2003). In contrast to the properties of the native protein we report here, the reaction executed by this recombinant protein was ATP γ S dependent and did not result in the formation of a RHR complex that

could slide on DNA, indicating that in their assay, the complex was not topologically linked to the DNA. We suggest that a more accurate description for the reaction reported by Bermudez et al. (2003) is ternary complex formation rather than clamp loading, given that the authors reported that (1) adenine nucleotide binding is sufficient for RSR to form a complex with RHR, and complex formation could be supported by not only ATP, but also ATP γ S and ADP in the absence of DNA; and that (2) RSR can bind DNA in the absence of RHR and nucleotide. The explanation for the discrepancy in the biochemical properties of the native and recombinant protein is not known.

Consistent with our findings, however, the orthologous RSR clamp loader in *S. cerevisiae*, isolated from yeast, was recently reported to load its RHR clamp (Ddc1–Mec3–Rad17) onto DNA in an ATP-dependent reaction, resulting in a Ddc1–Mec3–Rad17 complex that could slide on DNA (Majka and Burgers 2003). In this report, using a circular substrate containing a 500 bp single-strand gap, clamp loading did not appear to be stimulated by RPA, although the authors did observe stimulation of the DNA-binding activity of the clamp loader and inhibition of clamp loading at ectopic or pseudosubstrates created by secondary structure in the single-stranded region of the substrate. On the other hand, analysis of the clamp-loading reaction carried out by the *E. coli* DNA replication clamp loader, the γ complex, with a circular gapped substrate revealed that the *E. coli* single-strand DNA-binding protein SSB plays an important role by specifically binding the χ subunit of the γ complex and stimulating its activity (Kelman et al. 1998). The χ -SSB interaction was shown to ameliorate the salt sensitivity of clamp loading, replication fork assembly, and DNA synthesis by facilitating binding of the γ complex to DNA (Glover and McHenry 1998; Kelman et al. 1998). Furthermore, a SSB variant with reduced affinity for χ was shown to be unable to stimulate clamp loading and DNA synthesis (Kelman et al. 1998). Analogously, our comparison of the ability of yeast and human RPA to support PCNA loading suggested that an interaction between RPA and RFC was presumably conferred by specific amino acids in human RPA not present in yeast RPA. We surmise that in the absence of a direct comparison of single-strand DNA-binding protein specificity as reported here, that stimulation of clamp loader activity by RPA may only be revealed by a careful analysis of the salt sensitivity of the clamp-loading reaction. Thus, perhaps the salt concentration in the experiment reported by Majka and Burgers (2003) was suboptimal to reveal this activity of RPA.

Interestingly, we have observed that utilization of a substrate containing a frayed recessed 3' end abrogates the stimulatory function of human RPA on RFC activity. Loading of PCNA using this substrate is supported by yeast and human RPA equivalently, and the efficiency of this loading is equivalent to the loading onto a completely base-paired recessed 3' end substrate (V. E. and B. S., unpublished data). Hence, the ability for RFC to load its clamp onto a recessed 3' end in the presence of yeast RPA is not due to an inhibitory activity nor an inability to prevent the clamp from sliding off the DNA. Therefore, we speculate that one function of the interaction of the clamp loaders with their cognate single-strand DNA-binding protein is to facilitate a conformational change or distortion in the DNA by the clamp loader that influences the efficiency of clamp loading. This idea is

consistent with the previous reports demonstrating that the γ complex and human RFC can load their clamps onto supercoiled plasmid substrates that lack free ends but contain distortions in the DNA and/or regions of partially unwound DNA (Podust et al. 1995; Yao et al. 2000b). Clearly the role of single-strand DNA-binding proteins in clamp loading merits further investigation.

The Role of the RSR Clamp Loader in the Cellular Response to DNA Damage

Inhibition of cell cycle progression in response to DNA damage requires the recognition or “sensing” of structural alterations in DNA and then the initiation and potentiation of a signal transduction cascade that relays the status of the genome to effector proteins that block cell cycle progression. The step in this pathway that requires the function of RSR and RHR (also referred to as checkpoint clamp loader and clamp, respectively) is unclear. The *S. cerevisiae* checkpoint clamp and clamp loader complexes have been shown to localize to specific sites of DNA damage in vivo, and targeting of the clamp to damaged DNA requires the function of the Rad24 protein, but not the Mec1/Lcd1 protein kinase complex (Kondo et al. 2001; Melo et al. 2001). A requirement for Rad17 for RHR complex localization to damaged chromatin in human cells was demonstrated by inhibiting Rad17 protein expression by small interfering RNA (Zou et al. 2002).

Based on the aforementioned observations and findings that the human and *S. pombe* rad17 proteins were reported to bind chromatin constitutively (Kai et al. 2001), it was suggested that the RHR clamp and the RSR clamp loader may function as initial sensors of DNA damage. This model, however, is inconsistent with our findings revealing a requirement for a 5' recessed primer-template substrate and RPA for loading of the RHR complex by the RSR clamp loader. RPA, an essential component of DNA replication, repair, and recombination pathways in vivo (Longhese et al. 1994; Wold 1997), has been demonstrated to be a substrate for kinases involved in the DNA damage response pathway (Brush and Kelly 2000; Oakley et al. 2001). *S. cerevisiae* RPA has been shown to genetically interact with Rfc4, and allele-specific mutants in RPA that abolish the interaction with RFC in vitro have been shown to confer a DNA damage checkpoint-deficient phenotype in vivo (Kim and Brill 2001). In addition, activation of the S-phase DNA damage checkpoint in a *Xenopus* cell-free DNA replication system resulted in RPA- and pol α /primase-dependent loading of *Xenopus* Rad17 and Hus1 proteins onto damaged chromatin (You et al. 2002; Lee et al. 2003). Therefore, we suggest a model in which the checkpoint clamp and clamp loader function not as initial sensors of DNA damage, but instead play a vital role in DNA damage responses by stabilizing stalled replication forks and/or stimulating replication fork reactivation and recombination-dependent DNA replication pathways after lesions are first processed into structures that are suitable substrates for clamp loading (Figure 7). All of these structures have 5' recessed ends and RPA could bind to the single-stranded DNA. We further suggest that a modified version of RPA would be primarily responsible for recruiting the checkpoint clamp loader and the clamp to these sites. Under these circumstances, essential roles of the checkpoint clamp may be to protect 5' recessed ends from exonucleolytic

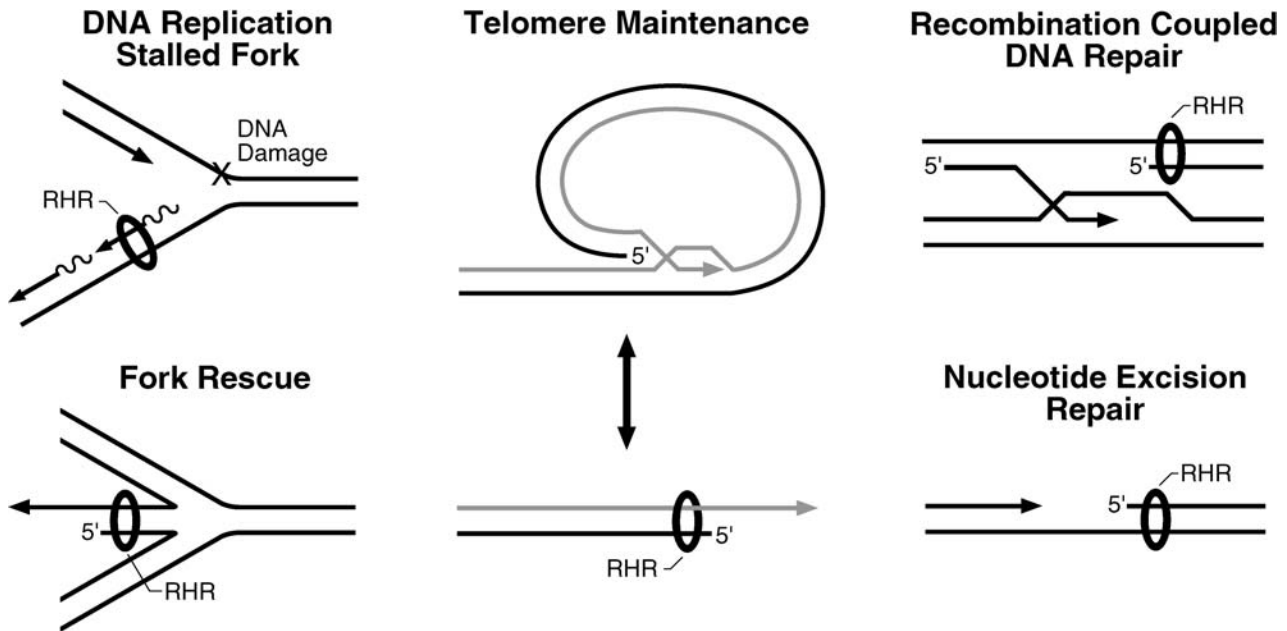


Figure 7. Possible Substrates onto Which the Checkpoint Clamp Loader RSR May Load Its Clamp (RHR)

DNA maintenance pathways, including those depicted here, generate intermediates containing free and/or recessed 3' ends that are processed by a variety of proteins. These structures also contain recessed 5' ends, whose fate in these reactions is unclear. Given that RSR loads RHR (depicted as a ring or donut encircling the DNA) onto recessed 5' ends in vitro, recessed 5' ends generated in vivo in the depicted pathways can be considered potential substrates. They all contain adjacent single-stranded DNA that could be bound by RPA. RHR has been shown to be required for checkpoint signaling in response to DNA replication fork arrest (Longhese et al. 1997), double-strand breaks (Kondo et al. 2001; Melo et al. 2001), and improper telomere maintenance (Garvik et al. 1995; Lydall and Weinert 1995; Longhese et al. 2000). The RHR clamp is proposed to protect the recessed 5' end from extensive degradation by exonucleases and to promote resolution of these structures back to duplex DNA.

DOI: 10.1371/journal.pbio.0000033.g007

degradation and promote resolution of these abnormal structures in DNA.

A potential participant in the DNA damage recognition step of the checkpoint pathway is the Mec1/Lcd1 kinase complex (corresponding to the ATM and ATR/ATRIP [Cortez et al. 2001] kinases in mammals). Mec1/Lcd1 has been demonstrated to localize to sites of damaged DNA in vivo and functionally bind double-stranded linear DNA substrates in vitro, independent of the clamp loader and clamp proteins (Kondo et al. 2001; Melo et al. 2001; Rouse and Jackson 2002b). Interestingly, Mec1 plays an important role in replication fork maintenance and progression by facilitating replication through regions of the genome, termed replication slow zones, where forks have a propensity to stall (Cha and Kleckner 2002). In the absence of genotoxic stress, *mec1-ts* mutants display an accumulation of replication intermediates and a high rate of chromosome break at replication slow zones, suggesting that replication fork integrity and recombination-dependent repair pathways are compromised in these mutants. In a complimentary study, electron microscopic analyses revealed accumulation of aberrant DNA replication intermediates, including hemireplicated forks and reversed forks, in hydroxyurea-treated *S. cerevisiae rad53* cells, suggesting a requirement for Rad53 function for replication fork stability (Sogo et al. 2002). Thus, in the absence of DNA damage, we envision the Mec1/ATR/ATM kinase and checkpoint clamp and clamp loader complexes functioning as auxiliary replication fork components that respond to changes in replication fork progression and promote fork stability in S-phase to ensure proper coupling of leading and

lagging strand DNA synthesis. As components of attenuated replication forks, they activate downstream effectors, such as Chk1 and Rad53/Chk2, and facilitate fork reactivation by recruitment of the relevant DNA metabolizing enzymes. In response to damage outside of S-phase, a Mec1/ATR/ATM-dependent step may contribute to the creation of a specific DNA structure for loading of the checkpoint clamp (Rouse and Jackson 2002a), which then protects the recessed 5' end and facilitates DNA repair by recruiting components of the apparatus required for recombination-dependent DNA replication pathways.

The PCNA and RHR Clamps: Structurally Similar Protein Accessory Factors Conferring Distinct Substrate Specificities

It is well established that PCNA functions as a processivity factor or tether for DNA-modifying enzymes that are involved in a variety of biochemical pathways, from DNA replication and repair to nucleosome assembly, and in the establishment of specialized DNA structures such as heterochromatin (Zhang et al. 2000). However, the proteins recruited to DNA by RHR are not known. Notwithstanding, given the DNA structure onto which the RHR clamp is loaded by its clamp loader, potential ligands become quite evident, as recessed 5' ends are generated in many biochemical processes, including recombinational repair and telomere maintenance (Figure 7). Therefore, we predict that as in vitro assays for such processes evolve, biochemical activities of the RHR clamp should be uncovered, providing models for rigorous examination of RHR clamp function in vivo.

Materials and Methods

Cell maintenance and extract preparation. Human RKO cells were cultured at 37°C with 5% CO₂ on plates in McCoy's medium (GIBCO, Invitrogen Corporation, Carlsbad, California, United States) supplemented with 10% calf serum (GIBCO). RKO cells extracts were the source of protein for all IP reactions and for purification of the Rad9-Hus1-Rad1-loading activity (RHRA) and the RSR complex. RHRA is the eluate from the anti-Rfc2 Ab affinity column and the starting material for purification of RSR. Cells were harvested, washed with 4 ml of PBS per 5 × 10⁶ cells, then lysed with 200 μl per 5 × 10⁶ cells of buffer A (50 mM KPO₄ [pH 7.4], 1 mM DTT, 1 mM EDTA, 0.2 mM PMSF, 7 mM CHAPS [Sigma-Aldrich, St. Louis, Missouri, United States], 10% glycerol, 50 μM NaV, 50 mM NaF, 10 mM β-glycerolphosphate, Complete™ protease inhibitor cocktail [Roche, Basel, Switzerland]) and 5 μM leupeptin (Roche) containing 250 mM NaCl on ice for 30 min. After lysis, cellular debris was removed by centrifugation at 10,000 × g for 15 min at 4°C.

Ab generation and purification. The Abs used in this study are as follows: for IP and Wb of Rad17, monoclonal Ab 31E (Chang et al. 1999), a generous gift of Dr. Lan Bo Chen, Dana Farber Cancer Institute; for IP and Wb of Rfc1, monoclonal Ab #6; for purification of the RHRA and RSR, CSH851 (against Rfc2) and CSH1147 (against Rad17), respectively; for Wb of Rfc2, CSH851; and for Wb of Hus1, Rad1, and Rad9, CSH1120, CSH1119, and M389 (Santa Cruz, sc 8324), respectively. Abs CSH851, CSH1147, CSH1120, and CSH1119 were generated by immunization of rabbits with the following peptides covalently coupled to activated KLH (Pierce Biotechnology, Rockford, Illinois, United States): hRFC2 N-terminal peptide GSSGENK-KAK, hRAD17 C-terminal peptide MEDYESDGT, hHUS1 C-terminal peptide ESTHEDRNVE, and hRAD1 C-terminal peptide DEEVPES. All peptides were obtained from Research Genetics (Invitrogen). Abs were affinity purified using the Pierce Sulfo-Link Kit™ as suggested by the manufacturer. Wb was performed using standard procedures (Harlow and Lane 1999); all Abs were diluted in blocking solution (3% nonfat dry milk in Tris-buffered saline) except for 1120 and 1119, which were diluted in blocking solution containing 0.2% Triton X-100 (Sigma).

Immunoprecipitation of Rad17 and RFC. IP of Rad17 and RFC from RKO cell extracts was performed using Abs 31E (against Rad17), #6 (against Rfc1), and CSH851 (against Rfc2) covalently coupled to GammaBind™ protein G-sepharose (Pharmacia, now Pfizer, New York, New York, United States) with 20 mM dimethylpiperimidate (Sigma) (Harlow and Lane 1999). For each, 20 μl of Ab beads (10 μg of Ab) was used for each IP reaction from extract (200 μl) prepared from 5 × 10⁶ cells. All IP reactions were incubated for 3 h at 4°C with rocking and washed three times at 4°C with 1.5 ml of buffer A containing 250 mM NaCl. The beads were resuspended in 40 μl of SDS-PAGE sample buffer. Each IP reaction (10 μl) was subjected to SDS-PAGE through a 12.5% polyacrylamide gel, and proteins were visualized by either silver staining or Wb. For depletion of either RFC or Rad17-Rfc2-5 from the RHRA, 25 μl of either anti-Rfc1 beads, anti-Rad17 beads, or anti-HA epitope (12CA5) beads was incubated with 70 μl of the RHRA for 3 h at 4°C with continuous agitation. After the incubation, the beads were allowed to settle, and the supernatant (depleted RHRA) was collected to assay for RHR loading. The beads were then processed and analyzed as described above for IP reactions except that the washes were performed with buffer A containing 350 mM NaCl, and the beads were resuspended in 50 μl of SDS-PAGE sample buffer for analysis.

Purification of the RHR-loading activity and RSR. The RHR-loading activity was purified from 1 × 10⁹ cells using 1.5 ml of CSH851 (against Rfc2) beads prepared by covalently coupling the Ab to GammaBind™ protein G-sepharose (Pharmacia) with 20 mM dimethylpiperimidate (Sigma) (Harlow and Lane 1999). The extract was incubated with the Ab beads for 6 h at 4°C, and the beads were then washed three times with 50 ml of buffer A containing 250 mM NaCl and aliquoted into three 1.5 ml Eppendorf tubes. Bound proteins were eluted with 750 μl of buffer A containing 250 mM NaCl and 0.5 mg/ml Rfc2 peptide at 30°C for 15 min, and the eluates were pooled, diluted 1:2 with buffer A, and loaded onto a 350 μl Q-sepharose column equilibrated in buffer A containing 125 mM NaCl. After washing the column with 10 ml of buffer A containing 125 mM NaCl, bound proteins were eluted with buffer A containing 350 mM NaCl, and 350 μl fractions were collected. All fractions were analyzed by SDS-PAGE on a 15% polyacrylamide gel, and proteins were visualized by silver staining or Wb. The peak of RHR-loading activity was aliquoted and stored at -70°C. For purification of RSR, anti-Rad17 CSH1147 was cross-linked to GammaBind™ protein G-sepharose as described above, and 300 μl of the beads was incubated

with the Rfc2 Ab affinity pool for 3 h at 4°C, after which the beads were washed twice, 15 min per wash with 1.3 ml of buffer A containing 350 mM NaCl. RSR was then eluted at 18°C with 300 μl per elution of buffer A containing 250 mM NaCl and 0.5 mg/ml Rad17 C-terminal peptide, and the eluted protein was concentrated using 50 μl of Q-sepharose. Fractions containing the peak of protein were aliquoted and stored at -70°C. The protein concentration of the purified RSR complex was determined by SYPRO Ruby protein gel staining (Amersham Biosciences, Little Chalfont, United Kingdom) using known amounts of purified baculovirus Rad17 protein, bovine serum albumin, and Rfc4 protein as standards and was 0.1 pmol/μl (typical total protein yield was 30 pmol per 1 × 10⁹ cells).

Purification of the RHR complex from *E. coli*. The Rad9-Hus1-Rad1 complex was expressed in BL21 (DE3) transformed with a pET28a plasmid (Novagen, Madison, Wisconsin, United States) into which the genes for Rad9, Rad1, and Hus1 (kindly provided by Dr. Larry Karnitz, The Mayo Clinic) were subcloned sequentially. A detailed description of the plasmid construction, purification of the complex, and characterization of its properties will be published elsewhere (V. E. and B. S., unpublished data). In brief, the complex was purified using Talon™ affinity (BD Biosciences Clontech, Palo Alto, California, United States), Q-sepharose, and phosphocellulose chromatography, and then finally sedimentation through a 4.8 ml 15%–32.5% glycerol gradient in buffer D (50 mM KPO₄ [pH 7.4], 1 mM DTT, 1 mM EDTA, 0.2 mM PMSF, 7 mM CHAPS, Complete™ protease inhibitor cocktail, 2 μM leupeptin) containing 500 mM NaCl at 4°C for 21 h at 49 K in a SW55Ti rotor (Beckman Instruments, Fullerton, California, United States). A gradient loaded with native protein molecular weight standards (ovalbumin, albumin, aldolase, catalase) was run in parallel. The fractions containing the peak of all three proteins were aliquoted and stored at -70°C. The protein concentration of the complex was determined by SYPRO Ruby protein gel staining, and Simply Blue Safe Staining™ (Invitrogen) was 235 nM.

PCNA/RHR-loading assay. The previously established assay for PCNA loading (Waga and Stillman 1998a) was employed with minor modifications. Reactions were prepared as follows. DNA-bound beads (15 μl; 1 pmol of DNA) or beads alone were washed with 500 μl of loading buffer (LB) (30 mM HEPES-KOH [pH 7.5], 1 mM DTT, 7 mM MgCl₂, 1 mM CHAPS) and then resuspended in LB containing 50 mM NaCl and 250 ng of RPA (2 pmol) and incubated at 25°C for 15 min. After the RPA-binding reaction, the beads were allowed to settle by gravity, the supernatant was removed, and 5 μl of the RHR-loading activity from the Rfc2 Ab affinity column or 0.25 pmol of the RSR complex, 1 pmol of the RHR complex, and the LB-containing nucleotide (ATP or ATPγS, as dictated by the experiment) were added and the reactions incubated at 30°C for 25 min with continuous agitation. The final reaction conditions were 30 mM HEPES, 1.1 mM DTT, 7 mM MgCl₂, 1.7 mM CHAPS, 1% glycerol, 0.1 mM EDTA, 5 mM KPO₄, 60 mM NaCl, 1 mM ATP or ATPγS (deviation from LB due to contribution of protein buffer constituents). To assay for PCNA loading, reactions were prepared as described for RHR above, except 2 pmol of PCNA was used and either 5 μl of the RHR-loading activity or 0.25 pmol (2.5 μl) of recombinant RFC. Reactions were stopped by placement on ice for 1 min, and the beads washed twice, 5 min per wash, with 1.5 ml of LB containing 100 mM NaCl without nucleotide at 4°C with rocking and finally resuspended in 25 μl of SDS-PAGE sample buffer. Proteins bound to the bead were analyzed by SDS-PAGE through a 12.5% polyacrylamide gel followed by Wb.

Purification of PCNA, RPA, RFC and Rfc2-5, and ATPase assays. Human PCNA and RPA and yeast RPA were purified from *E. coli* as previously described (Waga and Stillman 1994). Human RFC was purified as previously described (Ellison and Stillman 1998), and the primer-template substrate containing both recessed 5' and 3' ends was used as a DNA cofactor at the indicated concentrations. Reactions were performed with either RFC, Rfc2-5, or the purified RSR and incubated for 60 min at 37°C unless indicated otherwise. The reactions were then analyzed for the production of ADP by thin-layer chromatography as previously described.

Supporting Information

Accession Numbers All accession numbers for *Homo sapiens* proteins are from the National Center for Biotechnology Information (NCBI) Entrez Protein database (<http://www.ncbi.nlm.nih.gov/entrez/query.fcgi?db=Protein>): HUS1 (AAC95526), PCNA (AAA35736), RAD1 (AAC14138), RAD9 (AAB39928), RAD17 (AAC36334), RFC1



(AAA16121), RFC2 (AAB09786), RFC3 (AAB07268), RFC4 (AAH17452), and RFC5 (AAB09784).

All accession numbers for *S. pombe* are from the *S. pombe* GeneDB (<http://www.genedb.org/genedb/pombe/index.jsp>): *hus1* (SPAC20G4.04c), *pcn1* (SPBC16D10.09), *rad1* (SPAC1952.07), *rad9* (SPAC664.07c), *rad17* (SPAC14C4.13), *rfc1* (SPBC23E6.07c), *rfc2* (SPAC23D3.02), *rfc3* (SPAC27E2.10c), *rfc4* (SPAC1687.03c), and *rfc5* (SPBC83.14c).

All accession numbers for *S. cerevisiae* are from also from the NCBI Entrez Protein database: Ddc1 (CAA97907), Mec3 (AAB67334), Pol31 (CAA85038), Rad17 (CAA99699), Rad24 (AAB64700), Rfc1 (CAA99434), Rfc2 (CAA89596), Rfc3 (CAA96207), Rfc4 (CAA99106), and Rfc5 (CAA85036).

The GenBank (<http://www.ncbi.nlm.nih.gov/entrez/query.fcgi?db=Nucleotide>) accession numbers used in this paper are *ATM* (Q13315), *CHK1* (NP_001265), and *CHK2* (NP_009125).

References

- Abraham RT (2001) Cell cycle checkpoint signaling through the ATM and ATR kinases. *Genes Dev* 15: 2177–2196.
- Bellaoui M, Chang M, Ou J, Xu H, Boone C, et al. (2003) Elg1 forms an alternative RFC complex important for DNA replication and genome integrity. *EMBO J* 22: 4304–4313.
- Ben-Aroya S, Koren A, Liefshitz B, Steinlauf R, Kupiec M (2003) *ELG1*, a yeast gene required for genome stability, forms a complex related to replication factor C. *Proc Natl Acad Sci U S A* 100: 9906–9911.
- Berdis AJ, Benkovic SJ (1997) Mechanism of bacteriophage T4 DNA holoenzyme assembly: The 44/62 protein acts as a molecular motor. *Biochemistry* 36: 2733–2743.
- Bermudez VP, Lindsey-Boltz LA, Cesare AJ, Maniwa Y, Griffith JD, et al. (2003) Loading of the human 9–1–1 checkpoint complex onto DNA by the checkpoint clamp loader hRad17–replication factor C complex in vitro. *Proc Natl Acad Sci U S A* 100: 1633–1638.
- Brush GS, Kelly TJ (2000) Phosphorylation of the replication protein A large subunit in the *Saccharomyces cerevisiae* checkpoint response. *Nucleic Acids Res* 28: 3725–3732.
- Burtel MA, Roos-Mattjus PM, Rauen M, Babendure JR, Karnitz LM (2001) Reconstitution and molecular analysis of the hRad9–hHus1–hRad1 (9–1–1) DNA damage responsive checkpoint complex. *J Biol Chem* 276: 25903–25909.
- Cai J, Gibbs E, Uhlmann F, Phillips B, Yao N, et al. (1997) A complex consisting of human replication factor C p40, p37, and p36 subunits is a DNA-dependent ATPase and an intermediate in the assembly of the holoenzyme. *J Biol Chem* 272: 18974–18981.
- Caspari T, Dahlen M, Kanter-Smolger G, Lindsay HD, Hofmann K, et al. (2000) Characterization of *Schizosaccharomyces pombe* Hus1: A PCNA-related protein that associates with Rad1 and Rad9. *Mol Cell Biol* 20: 1254–1262.
- Cha RS, Kleckner N (2002) ATR homolog Mec1 promotes fork progression, thus averting breaks in replication slow zones. *Science* 297: 602–606.
- Chang MS, Sasaki H, Campbell MS, Kraeft SK, Sutherland R, et al. (1999) hRad17 colocalizes with NHP2L1 in the nucleolus and redistributes after UV irradiation. *J Biol Chem* 274: 36544–36549.
- Cortez D, Guntuku S, Qin J, Elledge SJ (2001) ATR and ATRIP: Partners in checkpoint signaling. *Science* 294: 1713–1716.
- Cullmann G, Fien K, Kobayashi R, Stillman B (1995) Characterization of the five replication factor C genes of *Saccharomyces cerevisiae*. *Mol Cell Biol* 15: 4661–4671.
- Ellison V, Stillman B (1998) Reconstitution of recombinant human replication factor C (RFC) and identification of an RFC subcomplex possessing DNA-dependent ATPase activity. *J Biol Chem* 273: 5979–5987.
- Garvik B, Carson M, Hartwell L (1995) Single-stranded DNA arising at telomeres in *cdc13* mutants may constitute a specific signal for the RAD9 checkpoint. *Mol Cell Biol* 15: 6128–6138.
- Glover BP, McHenry CS (1998) The chi psi subunits of DNA polymerase III holoenzyme bind to single-stranded DNA-binding protein (SSB) and facilitate replication of an SSB-coated template. *J Biol Chem* 273: 23476–23484.
- Gomes XV, Schmidt SL, Burgers PM (2001) ATP utilization by yeast replication factor C. II. Multiple stepwise ATP binding events are required to load proliferating cell nuclear antigen onto primed DNA. *J Biol Chem* 276: 34776–34783.
- Green CM, Erdjument-Bromage H, Tempst P, Lowndes NF (2000) A novel Rad24 checkpoint protein complex closely related to replication factor C. *Curr Biol* 10: 39–42.
- Griffiths DJ, Barbet NC, McCready S, Lehmann AR, Carr AM (1995) Fission yeast rad17: A homologue of budding yeast RAD24 that shares regions of sequence similarity with DNA polymerase accessory proteins. *EMBO J* 14: 5812–5823.
- Harlow E, Lane D (1999) Using antibodies: A laboratory manual. Cold Spring Harbor, New York: Cold Spring Harbor Laboratory Press. 495 p.
- Hartwell LH, Kastan MB (1994) Cell cycle control and cancer. *Science* 266: 1821–1828.
- Hingorani MM, O'Donnell M (1998) ATP binding to the *Escherichia coli* clamp

Acknowledgments

We thank Mike Myers for the mass spectrometry analysis; Maarten Hoek, Andrei Chabes, Zhiguo Zhang, and Katherine Braun for critically reading the manuscript; Dana Amodeo for technical support; and James Duffy for preparation of the figures. This research was supported by a grant from the United States National Cancer Institute (CA13106).

Conflicts of Interest. The authors have declared that no conflicts of interest exist.

Author Contributions. VE and BS conceived and designed the experiments. VE performed the experiments. VE and BS analyzed the data. VE contributed reagents/materials/analysis tools. VE and BS wrote the paper. ■

- loader powers opening of the ring-shaped clamp of DNA polymerase III holoenzyme. *J Biol Chem* 273: 24550–24563.
- Hingorani MM, Bloom LB, Goodman MF, O'Donnell M (1999) Division of labor: Sequential ATP hydrolysis drives assembly of a DNA polymerase sliding clamp around DNA. *EMBO J* 18: 5131–5144.
- Jeruzalmi D, O'Donnell M, Kuriyan J (2001a) Crystal structure of the processivity clamp loader gamma (γ) complex of *E. coli* DNA polymerase III. *Cell* 106: 429–441.
- Jeruzalmi D, Yurieva O, Zhao Y, Young M, Stewart J, et al. (2001b) Mechanism of processivity clamp opening by the delta subunit wrench of the clamp loader complex of *E. coli* DNA polymerase III. *Cell* 106: 417–428.
- Kai M, Tanaka H, Wang TS (2001) Fission yeast rad17 associates with chromatin in response to aberrant genomic structures. *Mol Cell Biol* 21: 3289–3301.
- Kastan MB, Lim DS (2000) The many substrates and functions of ATM. *Nat Rev Mol Cell Biol* 1: 179–186.
- Kelman Z, Yuzhakov A, Andjelkovic J, O'Donnell M (1998) Devoted to the lagging strand: The subunit of DNA polymerase III holoenzyme contacts SSB to promote processive elongation and sliding clamp assembly. *EMBO J* 17: 2436–2449.
- Kim HS, Brill SJ (2001) Rfc4 interacts with Rpa1 and is required for both DNA replication and DNA damage checkpoints in *Saccharomyces cerevisiae*. *Mol Cell Biol* 21: 3725–3737.
- Kondo T, Matsumoto K, Sugimoto K (1999) Role of a complex containing Rad17, Mec3, and Ddc1 in the yeast DNA damage checkpoint pathway. *Mol Cell Biol* 19: 1136–1143.
- Kondo T, Wakayama T, Naiki T, Matsumoto K, Sugimoto K (2001) Recruitment of Mec1 and Ddc1 checkpoint proteins to double-strand breaks through distinct mechanisms. *Science* 294: 867–870.
- Kostrub CF, Knudsen K, Subramani S, Enoch T (1998) Hus1p, a conserved fission yeast checkpoint protein, interacts with Rad1p and is phosphorylated in response to DNA damage. *EMBO J* 17: 2055–2066.
- Krishna TS, Kong XP, Gary S, Burgers PM, Kuriyan J (1994) Crystal structure of the eukaryotic DNA polymerase processivity factor PCNA. *Cell* 79: 1233–1243.
- Kuriyan J, O'Donnell M (1993) Sliding clamps of DNA polymerases. *J Mol Biol* 234: 915–925.
- Lee J, Kumagai A, Dunphy WG (2003) Claspin, a Chk1-regulatory protein, monitors DNA replication on chromatin independently of RPA, ATR, and Rad17. *Mol Cell* 11: 329–340.
- Lindsey-Boltz LA, Bermudez VP, Hurwitz J, Sancar A (2001) Purification and characterization of human DNA damage checkpoint Rad complexes. *Proc Natl Acad Sci U S A* 98: 11236–11241.
- Longhese MP, Plevani P, Lucchini G (1994) Replication factor A is required in vivo for DNA replication, repair, and recombination. *Mol Cell Biol* 14: 7884–7890.
- Longhese MP, Paciotti V, Fraschini R, Zaccarini R, Plevani P, et al. (1997) The novel DNA damage checkpoint protein ddc1p is phosphorylated periodically during the cell cycle and in response to DNA damage in budding yeast. *EMBO J* 16: 5216–5226.
- Longhese MP, Paciotti V, Neecke H, Lucchini G (2000) Checkpoint proteins influence telomeric silencing and length maintenance in budding yeast. *Genetics* 155: 1577–1591.
- Lydall D, Weinert T (1995) Yeast checkpoint genes in DNA damage processing: Implications for repair and arrest. *Science* 270: 1488–1491.
- Majka J, Burgers PM (2003) Yeast Rad17/Mec3/Ddc1: A sliding clamp for the DNA damage checkpoint. *Proc Natl Acad Sci U S A* 100: 2249–2254.
- Mayer ML, Gygi SP, Aebersold R, Hieter P (2001) Identification of RFC (Ctf18p, Ctf8p, Dcc1p): An alternative RFC complex required for sister chromatid cohesion in *S. cerevisiae*. *Mol Cell* 7: 959–970.
- Melo JA, Cohen J, Toczycki DP (2001) Two checkpoint complexes are independently recruited to sites of DNA damage in vivo. *Genes Dev* 15: 2809–2821.
- Mossi R, Hubscher U (1998) Clamping down on clamps and clamp loaders: The eukaryotic replication factor C. *Eur J Biochem* 254: 209–216.
- Oakley GG, Loberg LI, Yao J, Risinger MA, Yunker RL, et al. (2001) UV-induced hyperphosphorylation of replication protein A depends on DNA replication and expression of ATM protein. *Mol Biol Cell* 12: 1199–1213.



- Paciotti V, Lucchini G, Plevani P, Longhese MP (1998) Mec1p is essential for phosphorylation of the yeast DNA damage checkpoint protein Ddc1p, which physically interacts with Mec3p. *EMBO J* 17: 4199–4209.
- Pietroni P, Young MC, Latham GJ, von Hippel PH (2001) Dissection of the ATP-driven reaction cycle of the bacteriophage T4 DNA replication processivity clamp loading system. *J Mol Biol* 309: 869–891.
- Podust VN, Fanning E (1997) Assembly of functional replication factor C expressed using recombinant baculoviruses. *J Biol Chem* 272: 6303–6310.
- Podust LM, Podust VN, Sogo JM, Hubscher U (1995) Mammalian DNA polymerase auxiliary proteins: Analysis of replication factor C-catalyzed proliferating cell nuclear antigen loading onto circular double-stranded DNA. *Mol Cell Biol* 15: 3072–3081.
- Podust VN, Tiwari N, Ott R, Fanning E (1998) Functional interactions among the subunits of replication factor C potentiate and modulate its ATPase activity. *J Biol Chem* 273: 12935–12942.
- Reems JA, Wood S, McHenry CS (1995) *Escherichia coli* DNA polymerase III holoenzyme subunits alpha, beta, and gamma directly contact the primer-template. *J Biol Chem* 270: 5606–5613.
- Rouse J, Jackson SP (2002a) Interfaces between the detection, signaling, and repair of DNA damage. *Science* 297: 547–551.
- Rouse J, Jackson SP (2002b) Lcd1p recruits Mec1p to DNA lesions in vitro and in vivo. *Mol Cell* 9: 857–869.
- Shimomura T, Ando S, Matsumoto K, Sugimoto K (1998) Functional and physical interaction between Rad24 and Rfc5 in the yeast checkpoint pathways. *Mol Cell Biol* 18: 5485–5491.
- Sogo JM, Lopes M, Foiani M (2002) Fork reversal and ssDNA accumulation at stalled replication forks owing to checkpoint defects. *Science* 297: 599–602.
- St Onge RP, Udell CM, Casselman R, Davey S (1999) The human G2 checkpoint control protein hRAD9 is a nuclear phosphoprotein that forms complexes with hRAD1 and hHUS1. *Mol Biol Cell* 10: 1985–1995.
- Sugimoto K, Ando S, Shimomura T, Matsumoto K (1997) Rfc5, a replication factor C component, is required for regulation of Rad53 protein kinase in the yeast checkpoint pathway. *Mol Cell Biol* 17: 5905–5914.
- Thelen MP, Venclovas C, Fidelis K (1999) A sliding clamp model for the Rad1 family of cell cycle checkpoint proteins. *Cell* 96: 769–770.
- Tinker RL, Kassavetis GA, Geiduschek EP (1994) Detecting the ability of viral, bacterial and eukaryotic replication proteins to track along DNA. *EMBO J* 13: 5330–5337.
- Tsurimoto T, Stillman B (1989) Purification of a cellular replication factor, RFC, that is required for coordinated synthesis of leading and lagging strands during simian virus 40 DNA replication in vitro. *Mol Cell Biol* 9: 609–619.
- Tsurimoto T, Stillman B (1990) Functions of replication factor C and proliferating-cell nuclear antigen: Functional similarity of DNA polymerase accessory proteins from human cells and bacteriophage T4. *Proc Natl Acad Sci U S A* 87: 1023–1027.
- Tsurimoto T, Stillman B (1991) Replication factors required for SV40 DNA replication in vitro. I. DNA structure-specific recognition of a primer-template junction by eukaryotic DNA polymerases and their accessory proteins. *J Biol Chem* 266: 1950–1960.
- Turner J, Hingorani MM, Kelman Z, O'Donnell M (1999) The internal workings of a DNA polymerase clamp-loading machine. *EMBO J* 18: 771–783.
- Venclovas C, Thelen MP (2000) Structure-based predictions of Rad1, Rad9, Hus1, and Rad17 participation in sliding clamp and clamp-loading complexes. *Nucleic Acids Res* 28: 2481–2493.
- Volkmer E, Karnitz LM (1999) Human homologs of *Schizosaccharomyces pombe* rad1, hus1, and rad9 form a DNA damage-responsive protein complex. *J Biol Chem* 274: 567–570.
- Waga S, Stillman B (1994) Anatomy of a DNA replication fork revealed by reconstitution of SV40 DNA replication in vitro. *Nature* 369: 207–212.
- Waga S, Stillman B (1998a) Cyclin-dependent kinase inhibitor p21 modulates the DNA primer-template recognition complex. *Mol Cell Biol* 18: 4177–4187.
- Waga S, Stillman B (1998b) The DNA replication fork in eukaryotic cells. *Annu Rev Biochem* 67: 721–751.
- Weinert T (1998) DNA damage and checkpoint pathways: Molecular anatomy and interactions with repair. *Cell* 94: 555–558.
- Wold MS (1997) Replication protein A: A heterotrimeric, single-stranded DNA-binding protein required for eukaryotic DNA metabolism. *Annu Rev Biochem* 66: 61–92.
- Wolkow TD, Enoch T (2002) Fission yeast rad26 is a regulatory subunit of the rad3 checkpoint kinase. *Mol Biol Cell* 13: 480–492.
- Yao N, Hurwitz J, O'Donnell M (2000a) Dynamics of beta and proliferating cell nuclear antigen sliding clamps in traversing DNA secondary structure. *J Biol Chem* 275: 1421–1432.
- Yao N, Leu FP, Anjelkovic J, Turner J, O'Donnell M (2000b) DNA structure requirements for the *Escherichia coli* gamma complex clamp loader and DNA polymerase III holoenzyme. *J Biol Chem* 275: 11440–11450.
- You Z, Kong L, Newport J (2002) The role of single-stranded DNA and polymerase alpha in establishing the ATR, Hus1 DNA replication checkpoint. *J Biol Chem* 277: 27088–27093.
- Yuzhakov A, Kelman Z, Hurwitz J, O'Donnell M (1999) Multiple competition reactions for RPA order the assembly of the DNA polymerase delta holoenzyme. *EMBO J* 18: 6189–6199.
- Zhang Z, Shibahara K, Stillman B (2000) PCNA connects DNA replication to epigenetic inheritance in yeast. *Nature* 408: 221–225.
- Zhou BB, Elledge SJ (2000) The DNA damage response: Putting checkpoints in perspective. *Nature* 408: 433–439.
- Zou L, Cortez D, Elledge SJ (2002) Regulation of ATR substrate selection by Rad17-dependent loading of Rad9 complexes onto chromatin. *Genes Dev* 16: 198–208.