

Retraction and Corrections

RETRACTION

AGRICULTURAL SCIENCES. For the article “Characterization of capsaicin synthase and identification of its gene (*csy1*) for pungency factor capsaicin in pepper (*Capsicum* sp.),” by B. C. Narasimha Prasad, Vinod Kumar, H. B. Gururaj, R. Parimalan, P. Giridhar, and G. A. Ravishankar, which appeared in issue 36, September 5, 2006, of *Proc Natl Acad Sci USA* (103:13315–13320; first published August 28, 2006; 10.1073/pnas.0605805103), the authors wish to note the following: “Subsequent to our publication it was pointed out to us by a reader that the *csy1* sequence showed homology with the leucine rich putative protein kinase (EF560217) that appeared post publication of our paper. Accordingly, the identified gene cloned in our article does not conclusively encode to capsaicin synthase and we must retract the PNAS paper.”

B. C. Narasimha Prasad
Vinod Kumar
H. B. Gururaj
R. Parimalan
P. Giridhar
G. A. Ravishankar

www.pnas.org/cgi/doi/10.1073/pnas.0811456106

CORRECTIONS

APPLIED BIOLOGICAL SCIENCES. For the article “Induction of angiogenesis in tissue-engineered scaffolds designed for bone repair: A combined gene therapy–cell transplantation approach,” by Ehsan Jabbarzadeh, Trevor Starnes, Yusuf M. Khan, Tao Jiang, Anthony J. Wirtel, Meng Deng, Qing Lv, Lakshmi S. Nair, Steven B. Doty, and Cato T. Laurencin, which appeared in issue 32, August 12, 2008, of *Proc Natl Acad Sci USA* (105:11099–11104; first published August 4, 2008; 10.1073/pnas.0800069105), the authors note that the image in Fig. 4*a* inadvertently duplicated that of Fig. 4*b*. In addition, in the figure legend, scale bar values have been moved to appear in the images, and some magnification values have been updated. The corrected figure and legend appear below.

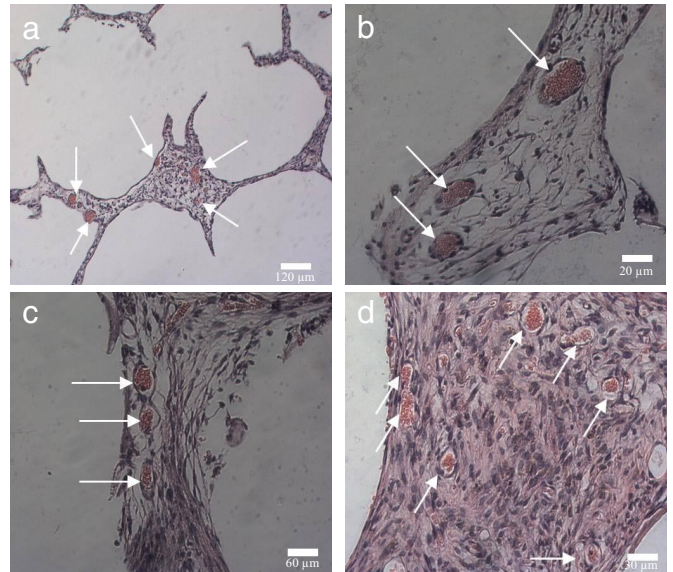


Fig. 4. Representative histological cross-sections of tissue implanted with sintered microsphere scaffolds, 21 days after s.c. implantation in SCID mice. (a) Transfected ADSCs. (Magnification: $\times 10$.) (b) Transfected ADSCs. (Magnification $\times 60$.) (c) ADSCs. (Magnification: $\times 20$.) (d) ECs. (Magnification: $\times 40$.) Arrows point to blood vessels, which were identified by the presence of luminal structure containing red blood cells.

www.pnas.org/cgi/doi/10.1073/pnas.0810217105