

Research article

Open Access

The FUSE binding proteins FBPI and FBP3 are potential *c-myc* regulators in renal, but not in prostate and bladder cancer

Achim Weber*¹, Ilka Kristiansen¹, Manfred Johannsen², Beibei Oelrich², Katharina Scholmann³, Sven Gunia⁴, Matthias May⁵, Hellmuth-Alexander Meyer², Silvia Behnke¹, Holger Moch¹ and Glen Kristiansen¹

Address: ¹Department of Pathology, Institute of Surgical Pathology, University Hospital Zurich, Zurich, Switzerland, ²Department of Urology, Charité Campus Mitte, Berlin, Germany, ³Institute of Pathology, Charité Campus Mitte, Berlin, Germany, ⁴Institute of Pathology, Helios Klinikum, Bad Saarow, Germany and ⁵Department of Urology, Cottbus, Germany

Email: Achim Weber* - achim.weber@usz.ch; Ilka Kristiansen - i.kristiansen@gmx.de; Manfred Johannsen - Manfred.johannsen@charite.de; Beibei Oelrich - Beibei.oelrich@charite.de; Katharina Scholmann - katharinascholman@hotmail.com; Sven Gunia - Sven.gunia@helios-kliniken.de; Matthias May - M.may@ctk.de; Hellmuth-Alexander Meyer - hellmuth.meyer@charite.de; Silvia Behnke - silvia.behnke@usz.ch; Holger Moch - holger.moch@usz.ch; Glen Kristiansen - glen.kristiansen@usz.ch

* Corresponding author

Published: 16 December 2008

Received: 22 February 2008

BMC Cancer 2008, 8:369 doi:10.1186/1471-2407-8-369

Accepted: 16 December 2008

This article is available from: <http://www.biomedcentral.com/1471-2407/8/369>

© 2008 Weber et al; licensee BioMed Central Ltd.

This is an Open Access article distributed under the terms of the Creative Commons Attribution License (<http://creativecommons.org/licenses/by/2.0>), which permits unrestricted use, distribution, and reproduction in any medium, provided the original work is properly cited.

Abstract

Background: The three far-upstream element (FUSE) binding proteins (FBP1, FBP2, and FBP3) belong to an ancient family of single-stranded DNA binding proteins which are required for proper regulation of the *c-myc* proto-oncogene. Whereas it is known that *c-myc* alterations play a completely different role in various carcinomas of the urogenital tract, the relevance of FBPs is unclear.

Methods: FBP1, FBP3 and *c-myc* expression was studied in 105 renal cell, 95 prostate and 112 urinary bladder carcinomas by immunohistochemistry using tissue microarrays.

Results: High rates of FBP1 and FBP3 expression were observed in all cancer types. There was a concomitant up-regulation of FBP1 and FBP3 in renal cell and prostate carcinomas ($p < 0.001$ both). *C-myc* expression was detectable in 21% of prostate, 30% of renal and 34% of urothelial carcinomas. Interestingly, strong FBP1 and FBP3 expression was associated with *c-myc* up-regulation in clear cell renal cell carcinomas ($p < 0.001$ and 0.09 resp.), but not in bladder or prostate cancer.

Conclusion: The correlation between FBP1/FBP3, *c-myc* and high proliferation rate in renal cell carcinoma provides strong *in vivo* support for the suggested role of FBP1 and FBP3 as activators of *c-myc*. The frequent up-regulation of FBP1 and FBP3 in urothelial and prostate carcinoma suggests that FBPs also have an important function in gene regulation of these tumors.

Background

The three far-upstream element (FUSE) binding proteins (FBP1, FBP2, and FBP3), encoded by different genes, comprise an ancient family of single-strand DNA-binding pro-

teins which have different functions in gene regulation. Though the FBP1, FBP2, and FBP3 genes are located on different chromosomes in mice as well as in humans, their primary sequences are highly related [1-3]. The genes

encoding FBP1 and FBP3 are located on chromosomes 1p31.1 and 9q34.11, respectively. FBP1 (FBP) is designated the family progenitor. Besides regulating the transcription of the *c-myc* proto-oncogene [4-6], the FBP family has been shown to bind a variety of RNAs, therefore, FBPs are likely to be multifunctional.

The far upstream element (FUSE) of the human *c-myc* proto-oncogene stimulates expression of *c-myc* in undifferentiated cells. FBP1, FBP2, and FBP3 are single-strand DNA-binding proteins that recognize FUSE. They possess all features of conventional transcription factors. The FBPs each bind sequence-specifically to only one strand of the far upstream element (FUSE; originally identified upstream of the *c-myc* promoter), and each has potent activation domains [1]. We recently have shown that FBP is required for proper regulation of the *c-myc* proto-oncogene [6,7]. In the absence of FBP, which binds to the single-stranded FUSE, the remainder of the set fails to sustain endogenous *c-myc* expression. A dominant-negative FBP arrests cellular proliferation and extinguished native *c-myc* transcription [4]. Expression of FBP is regulated during differentiation of several tissues [8]. FBP is present in undifferentiated, but not differentiated cells of the human pro-monocytic cell line HL60. Expression of FBP mRNA declines upon differentiation, suggesting transcriptional regulation of FBP [9]. In addition, ubiquitination and degradation of FBP, mediated by p38, leads to down-regulation of *c-myc*, which is required for differentiation of functional alveolar type II cells [10].

The *c-myc* proto-oncogene, coding for a basic helix-loop-helix leucine zipper (bHLHZ) transcription factor, is involved in the regulation of about 10–15% of all genes – not only of class II, but also genes of class I and III, making *c-myc* a master regulator for central cellular processes such as proliferation, differentiation, apoptosis, growth and cell death. It is involved in the tumorigenesis of many human tumors [11,12] including urogenital carcinomas. Alterations of the *c-myc* genomic region are well documented for prostate cancer [13-15] as well as bladder cancer [16]. In contrast, genomic alterations of *c-myc* are mostly subordinate for cell renal carcinoma with the exception of papillary renal cancer [17-19].

Here, we have analyzed the expression of FBP1 (as the family progenitor and a moderate transcriptional activator) and FBP3 (as the strongest transcriptional activator of this family, [20]) as well as *c-myc* in renal cell carcinomas (RCC), prostate (PCA) and urothelial cancers of the urinary bladder. We found that FBP1 as well as FBP3 are more frequently expressed in prostate and bladder cancer than in renal cancer. In addition, a positive correlation between levels of FBP1, FBP3 and *c-Myc* was exclusively detectable in RCC.

Methods

Patients

Prostate carcinoma

Paraffin blocks from 95 prostatectomy specimens were retrieved from the archives of the Institute of Pathology, Charite Campus Mitte, Berlin, Germany. Forty-four cases were pT2, 50 cases were pT3, one case was pT4. Twenty-four cases (25%) had a Gleason score (GS) of 2–6, 39 cases (41%) had a GS of 7 and 31 (43%) cases had a GS of 8–10 (one missing due to anti-androgenic therapy). Median follow up time concerning PSA values was 43 months (range 3–180 months). Median patient age was 61 years.

Bladder urothelial carcinoma

We enclosed 147 patients with newly diagnosed primary non-invasive (pTa) papillary bladder cancer who underwent transurethral surgical resection (TUR) at the Carl-Thiem Hospital Cottbus, Germany, between 1997 and 2004. Grading according to WHO 1973 and WHO 2004 was done retrospectively (G.K.). Median follow up time for patients without disease progression was 53 months. Sixty-three patients (42.6%) suffered a histologically confirmed disease recurrence.

Renal cell carcinoma

Tumor tissue of 104 adult patients with RCC undergoing radical nephrectomy at the Department of Urology of the University Hospital Charité, Berlin, Germany between July 2003 and January 2006 was analyzed. According to the histological type, these included 83 clear cell, 16 papillary, and five chromophobe renal cell carcinomas, respectively. Tumor stage and classification were established according to the 2002 TNM System and the 2004 WHO Classification. Tumor pT-status was as follows: 53 pT1 (51%), three pT2 (3%), 45 pT3 (43%) and three pT4 (3%). According to Fuhrman, 11 tumors were G1, 73 tumors G2 and 20 tumors G3. Twenty-one tumors were pM1.

TMA

Tissue microarrays (TMA) with 109 renal cell carcinomas, 95 prostate and 147 urinary bladder cancers, respectively, have been constructed as described [21]. Suitable areas for tissue retrieval were marked on H&E-stained sections, punched out of the paraffin block (1.5 mm punch diameter for prostate and bladder cancer, 0.6 mm punch diameter for renal cell cancer), and inserted into a recipient block using a tissue arrayer (Beecher Instruments, Woodland, USA). The tissue array was cut without any sectioning aiding tapes, and sections (2 µm tick) were mounted on Superfrost slides (Menzel-Gläser, Braunschweig, Germany).

Immunohistochemistry

TMA sections were de-paraffinized in xylene and gradually hydrated. All TMAs were analyzed with the Ventana

Benchmark automated staining system (Ventana Medical Systems, Tucson, AZ) using Ventana reagents for the entire procedure. For immunostaining, commercially available antibodies against FBP1 (C-20, sc-11101, Santa Cruz Biotechnology, Heidelberg, Germany), FBP3 antibodies (E-15, sc-11104, Santa Cruz Biotechnology, Inc.), Ki-67 (clone MIB1, Dianova, Hamburg, Germany), and c-Myc (mouse monoclonal, 9E11, Novocastra Laboratories Ltd, Newcastle upon Tyne, UK) were used and adjusted to the Ventana Benchmark (Ventana Medical Systems, Tucson, AZ) system. Titrations and initial reactivity assessment were performed on TMAs containing multiple tissues of different histogenetic origin. Sections were treated with and without a heat-based steamer using various antigen retrieval solutions (citrate buffer, EDTA buffer, cell conditioning solution). Clear nuclear staining was achieved at a dilution of 1:100 (concentration, 2 µg/mL) for FBP1 and FBP3 (Figure 1, 2, 3), 1:400 for c-Myc, and 1:1000 for Ki-67, respectively, which was used for all analysis (Figure 4). Primary antibodies were detected using the iVIEW DAB detection kit and the signal enhanced with the amplification kit. Slides were counterstained with hematoxylin, dehydrated and mounted.

With this protocol, a nearly exclusively nuclear (FBP1) or predominantly nuclear (FBP3) staining product was identified, in line with what was observed before in cell lines by transmission and confocal fluorescence microscopy [20,22]. For both, FBP1 and FBP3, only nuclear staining was assayed. Intensity of staining was scored in a semi-quantitative approach as score 0 (none to very faint), score 1 (weak), score 2 (moderate), or score 3 (strong).

For c-Myc, a stringent evaluation protocol with high dilution of antibody was used, and only a nuclear signal was interpreted as positive staining (score 0: negative, or score 1: positive). For Ki-67, percentage of positive tumor cells was recorded for correlation analysis. For statistical evaluation of Ki-67 in RCC, the Ki-67 count was dichotomized in low (< 1%) versus high rates (> 1%) of expression.

Statistics

Statistical Product and Service Solutions (SPSS) software 15.0 for windows (SPSS Inc., 1989–1999) was used to calculate statistics. Bivariate correlations were calculated according to Spearman. In crosstabs, Fishers exact test, Chi square test and Chi square test for trends were applied. Results were considered statistically significant if *p*-values were 0.05.

Results

FBP1 and FBP3 expression in normal tissues

So far, immunohistochemistry for FBP1 and FBP3 in human tissues has not been reported. Therefore, we first sought to evaluate immunostaining with the antibodies

used in this study on TMAs containing normal and tumor samples of different histogenetic origin. For this, a staining pattern corresponding to what has been reported before in cell lines by transmission and confocal fluorescence microscopy [20,22] was regarded as specific: a nearly exclusively nuclear staining for FBP1, and an at least predominantly nuclear staining product in the cases of FBP3. Indeed, for both transcription factors, immunohistochemistry revealed a nuclear signal in normal kidney, prostate and urothelium. For FBP3, a weak cytoplasmic reactivity was also detectable. Tubular epithelium of the nephron revealed a distinct differential staining pattern of FBP1 or FBP3: distal tubules showed a moderate FBP1 expression, whereas proximal tubules were negative for FBP1 and FBP3. Podocytes and endothelia of the Bowman capsule were FBP1 and FBP3 positive (Figure 2A). FBP3 expression was found in most epithelia of proximal and distal tubules (Figure 2E). FBP1 and FBP3 respectively were expressed in normal urothelium of the urinary bladder.

FBP1 and FBP3 expression in prostate cancer

Expression of FBP1 and FBP3 was detectable in luminal epithelia of normal glands, prostatic intraepithelial neoplasia (PIN; Figure 1B) as well as adenocarcinomas of the prostate. FBP1 was interpretable in 91 of 95 tissue cores on the TMA. FBP3 was interpretable in all tissue cores. All tumors showed at least a weak FBP1 and FBP3 expression. Twelve tumors revealed a weak expression (10.9%) (Figure 1C), 50 tumors a moderate expression (45.5%), and 29 a strong expression of FBP1 (26.4%) (Figure 1D). For FBP3, 18 tumors revealed a weak expression (16.4%) (Figure 1G), 48 tumors a moderate expression (43.6%), and 29 a strong expression of FBP3 (26.4%) (Figure 1H). For statistical analysis, weak and moderate FBP expression was lumped (low) and opposed to strong expression (high).

A strong positive association was found between the expression intensities of FBP1 and FBP3, respectively. Expression of FBP1 or FBP3 was not associated with clinicopathological variables (Table 1).

FBP1 and FBP3 expression in renal cancer

Staining of FBP1 was evaluable in 104 renal cell carcinomas. Of these, 19 tumors were FBP1 negative (17.4%) (Figure 2B). 49 tumors revealed a weak expression (45.0%), 31 tumors a moderate expression (28.4%) (Figure 2C), and 5 a strong expression of FBP1 (4.6%) (Figure 2D). Staining of FBP3 was analyzable in a total of 105 RCCs, with 12 tumors being negative for FBP3 (11.0%) (Figure 2F). 47 tumors revealed a weak expression (43.1%), 37 tumors a moderate expression (33.9%), and nine a strong expression of FBP3 (8.3%) (Figure 2G&2H). Negative and weak versus moderate and strong FBP immunoreactivity was lumped (low *vs.*

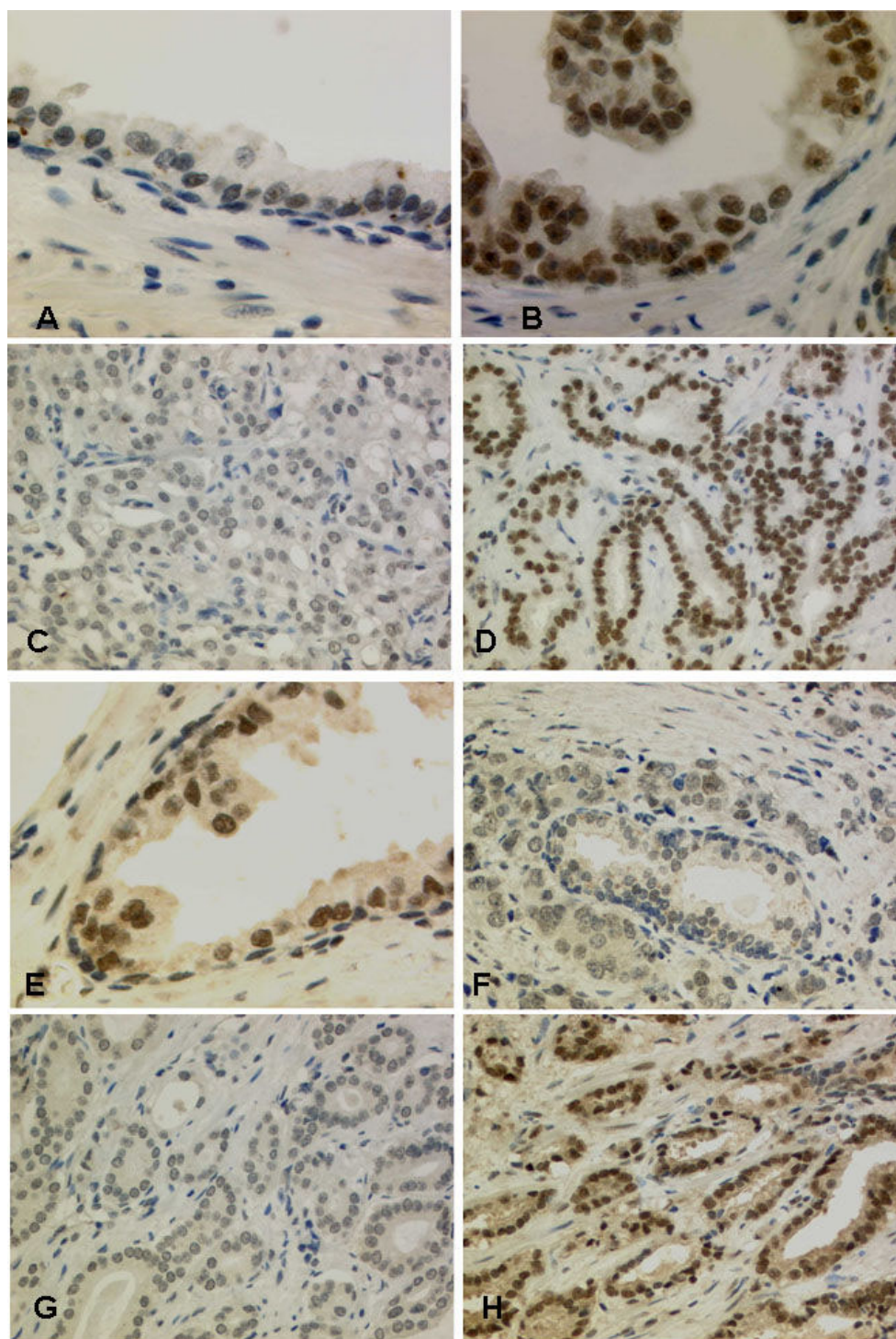


Figure 1
Expression of FBPI and FBP3 in normal prostate and prostate cancer. A) Normal prostatic epithelium with a strong nuclear expression of FBPI, basal cells are mostly devoid of FBPI expression (40×). B) Prostatic intraepithelial neoplasia (PIN) also shows a strong nuclear signal for FBPI (40×). C) Prostate cancer with weak FBPI expression (20×). D) Prostate cancer with strong FBPI expression (20×). E) Normal prostatic epithelium also reveals a strong nuclear expression of FBP3, basal cells are again mostly negative for FBP3 (40×). F) Normal gland (central), surrounded by invasive carcinoma with equal FBP3 expression (20×). G) Prostate cancer with low FBP3 expression (20×). H) Prostate cancer with high FBP3 expression (20×).

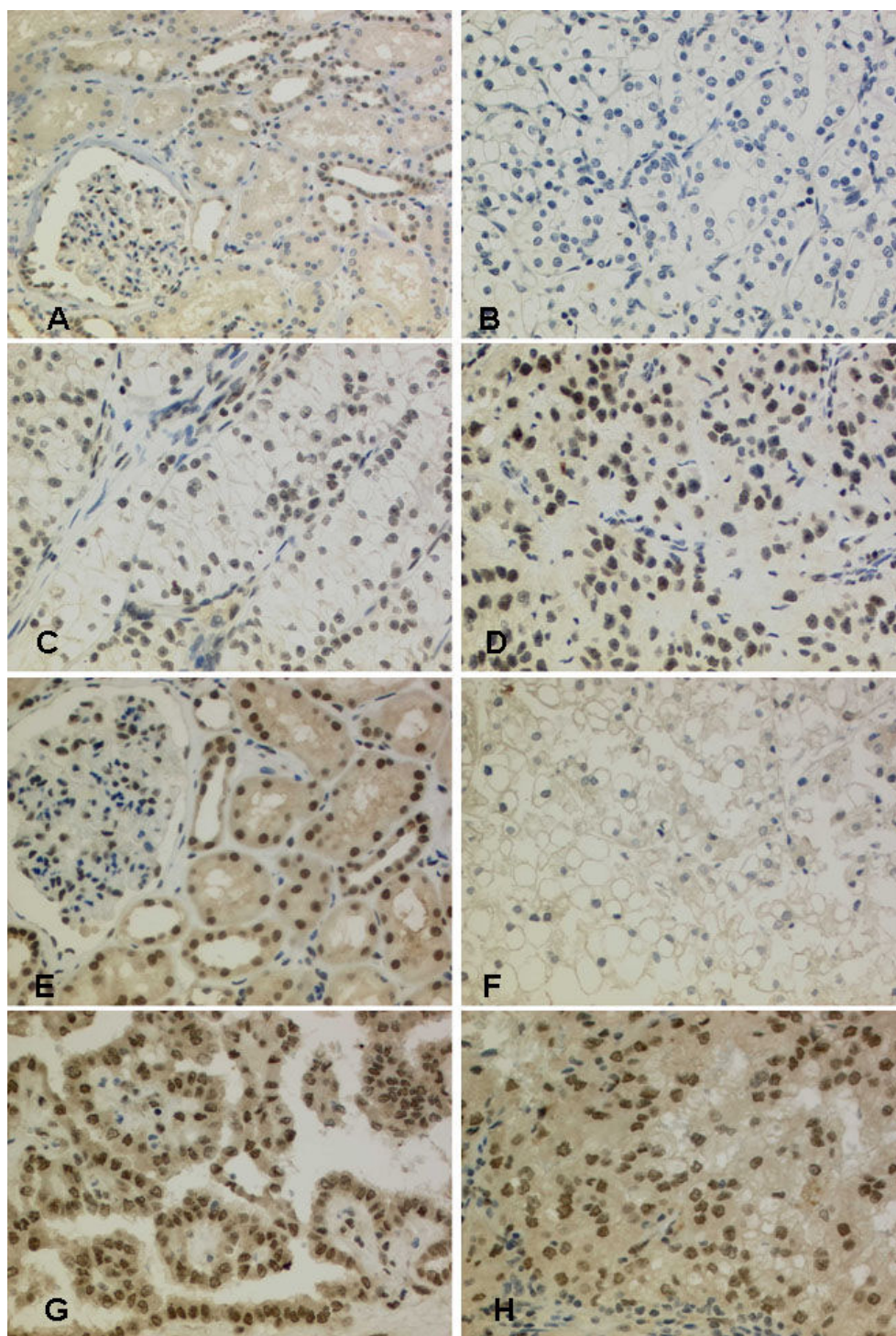


Figure 2

FBPI and FBP3 expression in normal kidney and renal cancer. A) Normal renal tissue shows a moderate FBPI expression in epithelia of distal tubules, whereas proximal tubules show no immunoreactivity. Podocytes and endothelia of the Bowman capsule are also FBPI positive (20×). B) ccRCC lacking FBPI expression (20×). C) ccRCC with moderate FBPI immunoreactivity (20×). D) Example of a strong FBPI expression in a ccRCC, 20×. E) Normal renal tissue with a strong FBP3 expression in epithelia of proximal and distal tubules (40×). F) FBP3-negative ccRCC (20×). G) FBP3 positive papillary RCC (20×). H) ccRCC with strong FBP3 expression (20×).

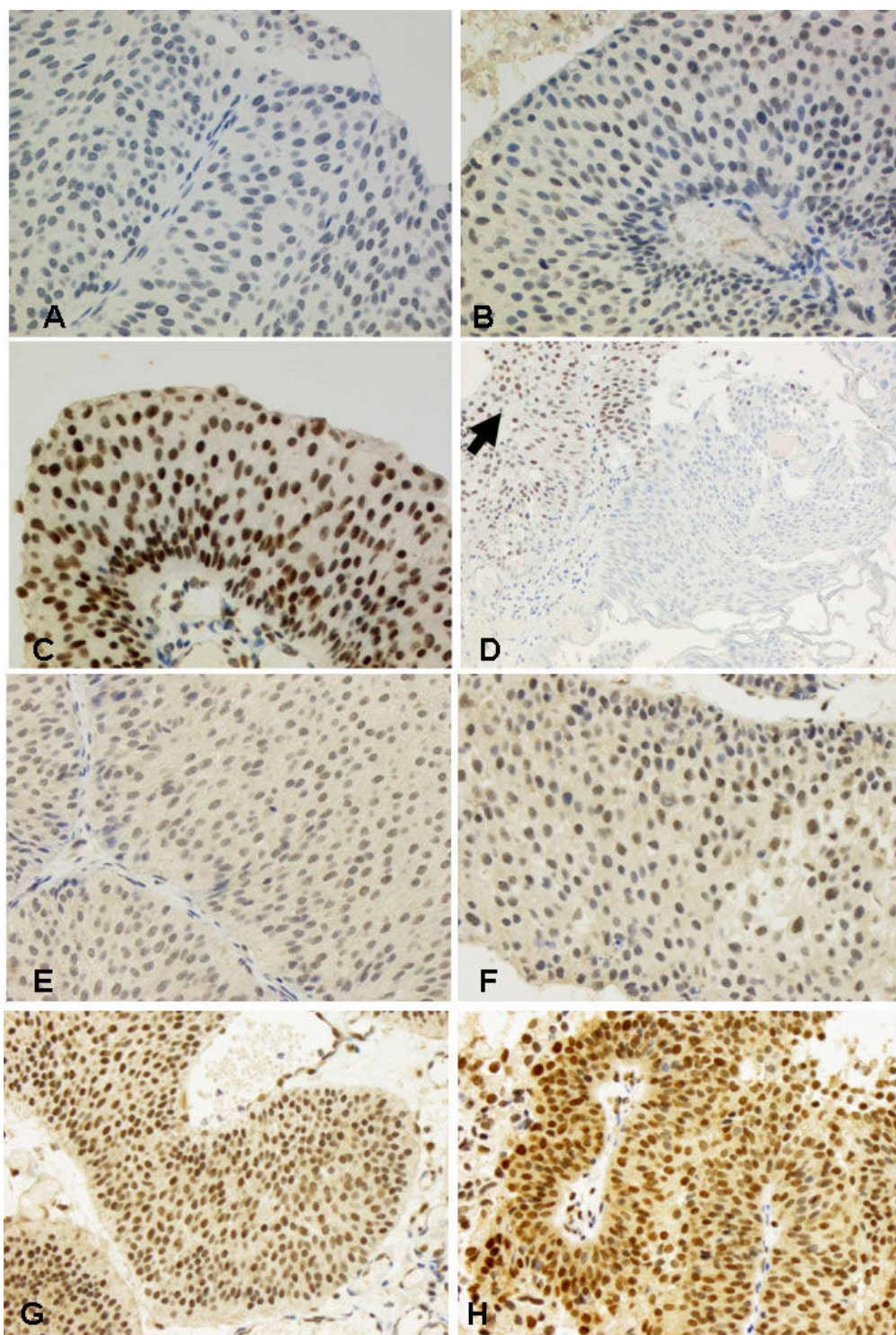


Figure 3
FBPI and FBP3 expression in normal urothelium and cancer of the urinary bladder. Papillary bladder cancer with weak (A), with moderate (B), and with strong (C) expression of FBPI (all 20×). D) Illustration of the heat sensitivity of the FBPI epitope, which is not detectable in coagulated areas (centrally), whereas the signal is well retained at the periphery (arrow). Papillary bladder cancer with weak (E, 20×), moderate (F, 40×; G, 20×), and with a strong (H, 40×) expression of FBP3, respectively.

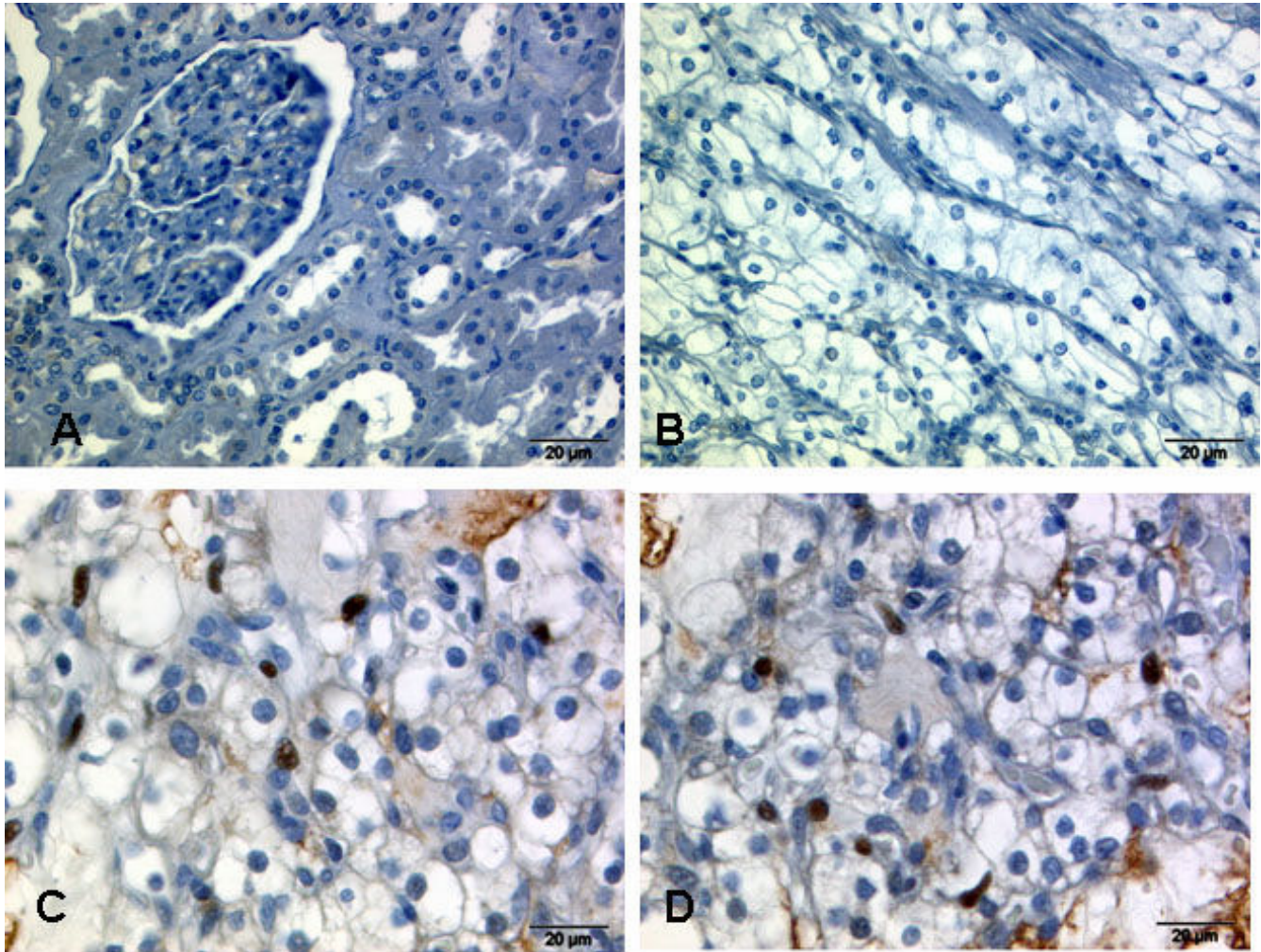


Figure 4

Expression of c-Myc in normal kidney and renal cancer. In non-tumor kidney tissue, no positive staining was found for c-Myc (A, 40 \times), and most renal cell carcinomas as were negative (B, 40 \times). Positive cases revealed staining for c-Myc only in a proportion of tumor cells (C, 40 \times).

high) for statistical analysis. A strong positive association was found between the expression intensities of FBP1 and FBP3, respectively (Table 2). Importantly, there was an association between high FBP expression levels and the renal tumor subtype. High FBP1 expression was more frequent in papillary RCC (68.8%) than in clear cell RCC (30.1%; $p < 0.003$). A similar trend was observed for FBP3 ($p = 0.052$). In clear cell RCC, FBP3 expression was associated with tumor stage: high FBP3 expression was less frequent in pT3/4 stage (25.6%) than in pT1/2 stage (52.5%; $p = 0.014$). There were no other correlations between the expression of FBP1 or FBP3 and clinicopathological parameters (Table 2).

FBP1 and FBP3 expression in urothelial cancer of the urinary bladder

FBP1 immunohistochemistry was evaluable in 112 urothelial carcinomas. Thirty-seven revealed a weak expression (33%) (Figure 1A), 56 tumors a moderate

expression (50%) (Figure 1B), and 19 a strong expression of FBP1 (17%) (Figure 1C). FBP3 was analyzable in 102 bladder cancer cases: 25 tumors revealed a low expression (25%) (Figure 3E), 57 tumors showed a moderate expression (57%) (Figure 3F&3G), and 20 a strong expression of FBP3 (20%) (Figure 3H). In contrast, to PCAs and RCCs, the co-expression of FBP1 and FBP3 failed statistical significance but showed a clear trend with 53 tumors that had high levels of FBP1 and FBP3 ($p = 0.067$). Additionally, high FBP1 expression was significantly more frequent in low grade (71.9%) than in high grade (47.8%) tumors ($p = 0.029$) (Table 3).

c-Myc and FBP expression

To determine c-Myc protein expression in relation to FBP expression levels, we developed a stringent protocol for c-Myc immunohistochemistry. Using this protocol, there was no c-Myc staining in non-tumoral tissues (Figure 4A).

Table 1: Associations between FBPI and -3 and clinical parameters in prostate cancer (low, high expression: for definition see text).

	FBPI				FBP3			
	n	low n (%)	high n(%)	p-value	n	low n (%)	high n(%)	p-value
pT2	42	29 (69.0)	13 (31.0)	n.s.	44	31 (70.5)	13 (29.5)	n.s.
pT3/4	49	33 (67.3)	16 (32.7)		51	35 (68.6)	16 (31.4)	
Gleason score 2–6	23	16 (69.6)	7 (30.4)	n.s.	24	14 (58.3)	10 (41.7)	n.s.
Gleason score 7–10	67	46 (68.7)	21 (31.3)		70	51 (72.9)	19 (27.1)	
PSA relapse	48	34 (70.8)	14 (29.2)	n.s.	49	32 (65.3)	17 (34.7)	n.s.
No PSA relapse	43	28 (65.1)	15 (34.9)		46	34 (73.9)	12 (26.1)	
FBPI low	62				62	48 (77.4)	14 (22.6)	0.017
FBPI high	29				29	15 (51.7)	14 (48.3)	
FBP3 low	63	48 (76.2)	15 (23.8)	0.017	66			
FBP3 high	28	14 (50.0)	14 (50.0)		29			

n.s.: not significant

In contrast, c-Myc was detectable in about one third of all tumors: 21.3% of prostate carcinomas, 29.9% of renal cell carcinomas, and 33.9% of urothelial carcinomas were positive.

In prostate cancer, c-Myc did neither correlate to pT stage, Gleason score and preoperative PSA levels nor to FBPI/FBP3 expression or Ki-67 fraction.

In bladder cancer, c-Myc correlated to tumor grading (WHO 2004: correlation coefficient 0.267, $p = 0.003$), but did not correlate to FBPI or FBP3 expression or Ki-67 fraction.

In renal cell cancer, no correlations of c-Myc with pT stage, M stage, grading or histology were found. On stratified analysis, a significant association of c-Myc and FBPI ($p = 0.001$) expression (Table 4. Figure 4B–D) was apparent in clear cell RCC. 62.5% of clear cell RCC with high FBPI were c-Myc positive. In contrast, c-Myc expression was only seen in 20.7% of clear cell RCC with low FBPI expression. Such a trend was also observed for FBP3 ($p = 0.09$). Additionally, a highly significant association between high levels of FBPI and high tumor cell proliferation rate (Ki-67) ($p = 0.001$) was noted. This is in sharp contrast to papillary renal cell carcinomas. In this tumor subtype, no association between FBPI/FBP3 expression and c-Myc or Ki-67 fraction was seen (data not shown).

Discussion

The single-stranded binding proteins FBPI and FBP3 are involved in the regulation of many cellular processes, such as gene expression and differentiation of several tissues [4,7,8,10]. With this, FBPs obviously are potential targets of a malignant cell transformation. The major aim of this study was to evaluate FBPI and FBP3 expression in urogenital tumors and to elucidate the relationship to c-Myc expression. Our study showed different expression levels of the single-stranded proteins in renal cancer subtypes, as well as in bladder and prostate cancer. Further, we demonstrate a significant correlation between FBPI and c-myc expression in clear cell renal cancer, whereas there was no such correlation in renal papillary, prostate and bladder cancer.

In previous studies, we and others have investigated FBPI and FBP3 expression in human cell lines by either immunofluorescence studies or fusion protein experiments in cell culture systems [6,20,22,23]. Here, we have extended FBPI expression analysis to primary non-neoplastic and neoplastic human tissues using immunohistochemistry. Remarkably, the subcellular localization patterns of FBPI and FBP3 with a nearly exclusive (in case of FBPI) or at least predominant localization (in case of FBP3) in the nucleus we observed by means of immunohistochemistry were similar to what has been described before. The overlapping data on subcellular localization patterns from the previously reported cell culture studies

Table 2: Associations between FBPI and -3 and clinical parameters in RCC (low, high expression: for definition see text).

		FBP1				FBP3			
		n	low n (%)	high n (%)	p-value	n	low n (%)	high n (%)	p-value
Histology	clear cell	83	58 (69.9)	25 (30.1)	0.003#	83	51 (61.4)	32 (38.6)	0.052#
	papillary	16	5 (31.3)	11 (68.8)		17	5 (29.4)	12 (70.6)	
	chromo-phobe	5	5 (100.0)	0 (0)		5	3 (60.0)	2 (40.0)	
pT Stage*	pT1/2	40	30 (75.0)	10 (25.0)	n.s.	40	19 (47.5)	21 (52.5)	0.014
	pT3/4	43	28 (65.1)	15 (34.9)		43	32 (74.4)	11 (25.6)	
Grade*	1/2	66	48 (72.7)	18 (27.3)	n.s.	66	43 (65.2)	23 (34.8)	n.s.
	3/4	17	10 (58.8)	7 (41.2)		17	8 (47.1)	9 (52.9)	
FBP1	low	58				58	41 (70.7)	17 (29.3)	0.013
	high	25				25	10 (40.0)	15 (60.0)	
FBP3	low	51	41 (80.4)	10 (19.6)	0.013	51			
	high	32	17 (53.1)	15 (46.9)		32			

n.s.: not significant

* only clear cell RCC

Chi square test

with our data indicated that the immunostaining for FBP1 and FBP3 were report here is a reliable means of studying these proteins. Furthermore, our observations in primary human tissues confirm previous data ascribing FBPs mainly a function as transcription factors.

Since previous studies on FBPs revealed an important role of these proteins in the regulation of the *c-myc* oncogene, we studied c-Myc protein levels. So far, very different immunohistochemical staining patterns and intensities are reported for c-Myc. Therefore, we deemed using a stringent protocol for c-Myc immunohistochemistry indispensable for reliable c-Myc staining. With this, we have observed no staining in non-tumoral tissues, and nuclear staining in roughly one third of all tumors. The results obtained with our immunohistochemical staining protocol are highly congruent with these reported findings. Therefore, we regard our c-Myc staining as specific.

With this immunohistochemical procedure, we found different patterns between FBP1, FBP3 and *c-myc* expression in the different tumor types. Clear cell RCC was the only tumor type with a positive correlation of FBP1 and FBP3 expression levels with c-Myc expression. This may recapit-

ulate the view that FBPs are activators of *c-myc* in renal cancer. While *c-myc* alterations on the genomic level have been reported in prostate [13-15] and bladder cancer [16], DNA copy number changes of *c-myc* have been identified only in papillary, but not in clear cell RCC [17-19]. It is tempting to speculate that c-myc expression in bladder, prostate and papillary renal cancer is rather due to *c-myc* copy number alterations, than a consequence of FBP overexpression, whereas clear cell RCC without *c-myc* DNA copy number alterations require FBPs for c-Myc regulation. We have recently shown that an intact chromosomal architecture of the *c-myc* regulator region is required for proper regulation of the *c-myc* gene by the FBPs [6,7,23]. The strong positive correlation between FBP1 expression and c-Myc in clear cell renal cell carcinomas is perfectly in line with the well established function of FBP1 as a transcriptional activator of *c-myc*. In papillary renal cell carcinomas with *c-myc* gene amplifications [17] one may expect a disruption of the FUSE/FBP-system. As a consequence, FBP1 expression may trigger increased proliferation in clear cell, but not in papillary RCC. This would explain our finding that the Ki-67 labeling index is related to FBP1 expression only in clear cell RCC, but not in other tumor subtypes.

Table 3: Associations between FBPI and -3 and tumor grade in non-invasive bladder cancer RCC (low, high expression: for definition see text).

		FBP1				FBP3			
		n	low n (%)	high n (%)	p-value	n	low n (%)	high n (%)	p-value
Grade (WHO 1973)	G1	27	7 (25.9)	20 (74.1)	n.s.*	24	4 (16.7)	20 (83.3)	n.s.*
	G2	80	27 (33.8)	53 (66.3)		74	19 (25.7)	55 (74.3)	
	G3	5	3 (60.0)	2 (40.0)		4	2 (50.0)	2 (50.0)	
Grade (WHO 2004)	Low grade	89	25 (28.1)	64 (71.9)	0.029*	81	20 (24.7)	61 (75.3)	n.s.*
	High grade	23	12 (52.2)	11 (47.8)		21	5 (23.8)	16 (76.2)	
FBP1	low	37				36	12 (33.3)	24 (66.7)	0.067
	high	75				64	11 (17.2)	53 (82.8)	
FBP3	low	23	12 (52.2)	11 (47.8)	0.067*	25			
	high	77	24 (31.2)	53 (68.8)		77			

n.s.: not significant

* Chi square test for trends

We found a high degree of co-expression of FBP1 and FBP3. Although the FBP1 and FBP3 genes are located on different chromosomes in humans (1p31.1 and 9q34.11, respectively) they show a strikingly parallel expression pattern through different tumor entities and tumor samples within an entity. In a recent study on the three FBPs, comparing their intrinsic activation and repression, sub-cellular localization, and in vivo targets, it has been shown that they usually cooperate to regulate the expression profiles among a set of common targets [20]. Our data are consistent with such a high degree of FBP1 and FBP3 co-regulation and support the notion that even in neoplastic tissues, where regulatory nexus are expected to

be disturbed, FBPs act synergistically. Urothelial tumors provide an exception to the tendency of this co-regulation of the different FBPs. The most frequent genetic alteration in transitional cell carcinoma of the urinary bladder is particular loss of chromosome 9 [24]. The partial 9q losses also involved 9q33-9q34 [25]. Therefore, FBP3 on 9q34.11 may also be a frequent target of 9q losses. This would explain the disrupted co-expression of FBP1 and FBP3 in urothelial tumors.

Conclusion

This is the first comprehensive study to investigate expression patterns of the *c-myc* regulators FBP in carcinomas of

Table 4: Associations between FBPI, FBP-3, c-Myc, and proliferation rate (Ki-67) in clear cell RCC

		c-myc				Ki-67			
		n	neg. n (%)	pos. n (%)	p-value	n	low n (%)	high n (%)	p-value
FBP1	low	58	46 (79.3)	12 (20.7)	0.001	58	49 (84.5)	9 (15.5)	0.001
	high	24	9 (37.5)	15 (62.5)		25	5 (20.0)	20 (80.0)	
FBP3	low	51	38 (74.5)	13 (25.5)	0.09	51	36 (70.6)	15 (29.4)	n.s.
	high	31	17 (54.8)	14 (45.2)		32	18 (56.3)	14 (43.8)	

* Chi square test for trends

the urinogenital tract. FBP1 and FBP3 were shown to be co-expressed in most tumor entities. Our data show co-expression of FBPs and *c-myc* in vivo, which suggests a potential role of FBP1 and FBP3 as an activator of *c-myc* in clear cell RCC.

Abbreviations

FBP: FUSE binding protein; FUSE: far-upstream element; RCC: renal cell carcinoma; TMA: tissue microarrays (TMA).

Competing interests

The authors declare that they have no competing interests.

Authors' contributions

Design of the study: AW, HM, GK. Collecting of patients data: MJ, BO, KS, SG, MM, HAM. Implementation of immunostaining: AW, SB. Evaluation of immunostaining and data analysis: AW, IK, GK. Writing of the manuscript: AW, HM, GK.

References

- Davis-Smyth T, Duncan RC, Zheng T, Michelotti G, Levens D: **The far upstream element-binding proteins comprise an ancient family of single-strand DNA-binding transactivators.** *J Biol Chem* 1996, **271(49)**:31679-31687.
- Ring HZ, Vameghi-Meyers V, Min H, Nikolic JM, Black DL, Francke U: **The mouse Fubp gene maps near the distal end of chromosome 3.** *Genomics* 1999, **56(3)**:357-358.
- Ring HZ, Vameghi-Meyers V, Nikolic JM, Min H, Black DL, Francke U: **Mapping of the KHSRP gene to a region of conserved synteny on human chromosome 19p13.3 and mouse chromosome 17.** *Genomics* 1999, **56(3)**:350-352.
- He L, Liu J, Collins I, Sanford S, O'Connell B, Benham CJ, Levens D: **Loss of FBP function arrests cellular proliferation and extinguishes c-myc expression.** *EMBO J* 2000, **19(5)**:1034-1044.
- Liu J, He L, Collins I, Ge H, Libutti D, Li J, Egly JM, Levens D: **The FBP interacting repressor targets TFIH to inhibit activated transcription.** *Mol Cell* 2000, **5(2)**:331-341.
- Weber A, Liu J, Collins I, Levens D: **TFIIH operates through an expanded proximal promoter to fine-tune c-myc expression.** *Mol Cell Biol* 2005, **25(1)**:147-161.
- Liu J, Kouzine F, Nie Z, Chung HJ, Elisha-Feil Z, Weber A, Zhao K, Levens D: **The FUSE/FBP/FIR/TFIIH system is a molecular machine programming a pulse of c-myc expression.** *EMBO J* 2006, **25(10)**:2119-2130.
- Avigan MI, Strober B, Levens D: **A far upstream element stimulates c-myc expression in undifferentiated leukemia cells.** *J Biol Chem* 1990, **265(30)**:18538-18545.
- Duncan R, Bazar L, Michelotti G, Tomonaga T, Krutzsch H, Avigan M, Levens D: **A sequence-specific, single-strand binding protein activates the far upstream element of c-myc and defines a new DNA-binding motif.** *Genes Dev* 1994, **8(4)**:465-480.
- Kim MJ, Park BJ, Kang YS, Kim HJ, Park JH, Kang JW, Lee SW, Han JM, Lee HW, Kim S: **Downregulation of FUSE-binding protein and c-myc by tRNA synthetase cofactor p38 is required for lung cell differentiation.** *Nat Genet* 2003, **34(3)**:330-336.
- Oster SK, Ho CS, Soucie EL, Penn LZ: **The myc oncogene: Marvelously Complex.** *Advances in Cancer Research* 2002, **84**:81-154.
- Adhikary S, Eilers M: **Transcriptional regulation and transformation by Myc proteins.** *Nature Reviews* 2005, **6(8)**:635-645.
- Bova GS, Carter BS, Bussemakers MJ, Emi M, Fujiwara Y, Kyprianou N, Jacobs SC, Robinson JC, Epstein JI, Walsh PC, et al.: **Homozygous deletion and frequent allelic loss of chromosome 8p22 loci in human prostate cancer.** *Cancer Research* 1993, **53(17)**:3869-3873.
- Macoska JA, Trybus TM, Benson PD, Sakr WA, Grignon DJ, Wojno KD, Pietruk T, Powell IJ: **Evidence for three tumor suppressor gene loci on chromosome 8p in human prostate cancer.** *Cancer research* 1995, **55(22)**:5390-5395.
- Sato K, Qian J, Slezak JM, Lieber MM, Bostwick DG, Bergstralh EJ, Jenkins RB: **Clinical significance of alterations of chromosome 8 in high-grade, advanced, nonmetastatic prostate carcinoma.** *Journal of the National Cancer Institute* 1999, **91(18)**:1574-1580.
- Christoph F, Schmidt B, Schmitz-Drager BJ, Schulz WA: **Overexpression and amplification of the c-myc gene in human urothelial carcinoma.** *Int J Cancer* 1999, **84(2)**:169-173.
- Furge KA, Chen J, Koeman J, Swiatek P, Dykema K, Lucin K, Kahnoski R, Yang XJ, Teh BT: **Detection of DNA copy number changes and oncogenic signaling abnormalities from gene expression data reveals MYC activation in high-grade papillary renal cell carcinoma.** *Cancer Research* 2007, **67(7)**:3171-3176.
- Schraml P, Kononen J, Bubendorf L, Moch H, Bissig H, Nocito A, Mihatsch MJ, Kallioniemi OP, Sauter G: **Tissue microarrays for gene amplification surveys in many different tumor types.** *Clin Cancer Res* 1999, **5(8)**:1966-1975.
- Strefford JC, Stasevich I, Lane TM, Lu YJ, Oliver T, Young BD: **A combination of molecular cytogenetic analyses reveals complex genetic alterations in conventional renal cell carcinoma.** *Cancer Genet Cytogenet* 2005, **159(1)**:1-9.
- Chung HJ, Liu J, Dunder M, Nie Z, Sanford S, Levens D: **FBPs are calibrated molecular tools to adjust gene expression.** *Mol Cell Biol* 2006, **26(17)**:6584-6597.
- Kristiansen G, Schluns K, Yongwei Y, Denkert C, Dietel M, Petersen I: **CD24 is an independent prognostic marker of survival in nonsmall cell lung cancer patients.** *British Journal of Cancer* 2003, **88(2)**:231-236.
- He L, Weber A, Levens D: **Nuclear targeting determinants of the far upstream element binding protein, a c-myc transcription factor.** *Nucleic Acids Res* 2000, **28(22)**:4558-4565.
- Liu J, Akoulitchev S, Weber A, Ge H, Chuiikov S, Libutti D, Wang XW, Conaway JW, Harris CC, Conaway RC, et al.: **Defective interplay of activators and repressors with TFIH in xeroderma pigmentosum.** *Cell* 2001, **104(3)**:353-363.
- van Tilborg AA, Groenfeld LE, Kwast TH van der, Zwarthoff EC: **Evidence for two candidate tumour suppressor loci on chromosome 9q in transitional cell carcinoma (TCC) of the bladder but no homozygous deletions in bladder tumour cell lines.** *British Journal of Cancer* 1999, **80(3-4)**:489-494.
- Kimura F, Florl AR, Seifert HH, Louhelainen J, Maas S, Knowles MA, Schulz WA: **Destabilization of chromosome 9 in transitional cell carcinoma of the urinary bladder.** *British Journal of Cancer* 2001, **85(12)**:1887-1893.

Pre-publication history

The pre-publication history for this paper can be accessed here:

<http://www.biomedcentral.com/1471-2407/8/369/prepub>

Publish with **BioMed Central** and every scientist can read your work free of charge

"BioMed Central will be the most significant development for disseminating the results of biomedical research in our lifetime."

Sir Paul Nurse, Cancer Research UK

Your research papers will be:

- available free of charge to the entire biomedical community
- peer reviewed and published immediately upon acceptance
- cited in PubMed and archived on PubMed Central
- yours — you keep the copyright

Submit your manuscript here:
http://www.biomedcentral.com/info/publishing_adv.asp

