

Research article

Open Access

Evaluation of gene amplification and protein expression of HER-2/neu in esophageal squamous cell carcinoma using Fluorescence *in situ* Hybridization (FISH) and immunohistochemistry

Yukie Sato-Kuwabara*^{†1}, José I Neves^{†1}, José HTG Fregnani^{†2},
Rubens A Sallum^{†3} and Fernando A Soares^{†1}

Address: ¹Department of Anatomic Pathology, Hospital AC Camargo, Rua Antônio Prudente, 211, 1o. andar, São Paulo, SP, CEP: 01509-010, Brazil, ²Department of Morphology, School of Medical Sciences of Santa Casa of São Paulo, Rua Dr. Cesário Motta Jr., 61, São Paulo, SP, CEP: 01221-020, Brazil and ³Department of Abdominal Surgery, Hospital AC Camargo, Rua Antônio Prudente, 211, 1o. andar, São Paulo, SP, CEP: 01509-010, Brazil

Email: Yukie Sato-Kuwabara* - yukiesato@gmail.com; José I Neves - bio_neves@uol.com.br; José HTG Fregnani - mdregnani@terra.com.br; Rubens A Sallum - rubenssallum@globo.com; Fernando A Soares - soaresfernando@terra.com.br

* Corresponding author †Equal contributors

Published: 7 January 2009

Received: 12 March 2008

BMC Cancer 2009, 9:6 doi:10.1186/1471-2407-9-6

Accepted: 7 January 2009

This article is available from: <http://www.biomedcentral.com/1471-2407/9/6>

© 2009 Sato-Kuwabara et al; licensee BioMed Central Ltd.

This is an Open Access article distributed under the terms of the Creative Commons Attribution License (<http://creativecommons.org/licenses/by/2.0>), which permits unrestricted use, distribution, and reproduction in any medium, provided the original work is properly cited.

Abstract

Background: Esophageal squamous cell carcinoma (ESCC) is the sixth most frequent neoplasia in Brazil. It is usually associated with a poor prognosis because it is often at an advanced stage when diagnosed and there is a high frequency of lymph node metastases. It is important to know what prognostic factors can facilitate diagnosis, optimize therapeutic decisions, and improve the survival of these patients. A member of the epidermal growth factor receptor (EGFR) family, c-erbB-2, has received much attention because of its therapeutic implications; however, few studies involving fluorescence *in situ* hybridization (FISH) analysis of HER-2/neu gene amplification and protein expression in ESCC have been conducted. The aim of this study was to verify the presence of HER-2/neu gene amplification using FISH, and to correlate the results with immunohistochemical expression and clinical-pathological findings.

Methods: One hundred and ninety-nine ESCC cases were evaluated using the Tissue Microarray (TMA) technique. A polyclonal antibody against c-erbB-2 was used for immunohistochemistry. Analyses were based on the membrane staining pattern. The results were classified according to the Herceptest criteria (DAKO): negative (0/1+), potential positive (2+) and positive (3+). The FISH reactions were performed according to the FISH HER2 PharmDx (DAKO) protocol. In each case, 100 tumor nuclei were evaluated. Cases showing a gene/CEN17 fluorescence ratio ≥ 2 were considered positive for gene amplification.

Results: The c-erbB-2 expression was negative in 117/185 cases (63.2%) and positive in 68 (36.8%), of which 56 (30.3%) were 2+ and 12 (6.5%) were 3+. No significant associations were found among protein expression, clinicopathological data and overall survival. Among the 47 cases analyzed, 38 (80.9%) showed no gene amplification while 9 (19.1%) showed amplification, as demonstrated by FISH. Cases that were negative (0/1+) and potential positive (2+) for c-erbB-2 expression by immunohistochemistry showed no gene amplification. However, all cases with gene amplification were positive (3+) by immunohistochemistry. According to univariate analysis, there was a significant difference ($p = 0.003$) in survival rates when cases with and without HER-2/neu amplification were compared.

Conclusion: Our data demonstrate the correspondence between gene amplification and protein expression of HER-2/neu. Gene amplification is an indicator of poor prognosis in ESCC.

Background

Squamous cell carcinoma is the most frequent histological type of cancer of the esophagus (ESCC) [1]. It occurs predominantly in developing countries and is the sixth most common neoplasia in Brazil [2]. ESCC generally has a poor prognosis because it is usually in an advanced stage at the time of diagnosis. Its epidemiological characteristics suggest the involvement of environmental factors in its etiology [3-5].

The mortality rate is still high despite the development of many therapeutic modalities in addition to surgical resection. Esophagectomy with lymph node dissection has significant morbidity and mortality rates [5-7]. Therefore, it is important to understand the prognostic factors that determine the most appropriate surgical approach in order to select patients for target-directed therapies.

The family of epidermal growth factor receptors comprises four homologous molecules: EGFR, c-erbB-2, c-erbB-3 and c-erbB-4. Some reports have suggested that abnormal activation of kinase activity in these receptors has an important role in tumor development and progression in ESCC [8,9]. Activation of these receptors induces cell migration and aggregation as well as hyperproliferation and epithelial cell differentiation [1]. The importance of these receptors has been studied in many malignant neoplasms, but mainly in breast carcinoma, leading to specific treatments to inactivate them [10].

Gene amplification has been described in many tumor types and is associated with poor prognosis [11]. When identified, gene amplification is an important indicator for more intensive treatment, mainly in breast and lung cancer [12-15]. It is analyzed by fluorescence (FISH) or chromogenic (CISH) *in situ* hybridization to measure the gene copy number.

Studies have verified that the HER-2/neu (c-erbB-2) oncogene (located on chromosome 17) is amplified and overexpressed in many tumor types, and have compared these results with immunohistochemical expression and clinicopathological data using Tissue Microarray [16-20] or conventional slides [21-23]. Amplification and overexpression of HER-2/neu (c-erbB-2) predict an especially poor prognosis in breast cancer.

Few studies have used FISH to evaluate HER-2/neu amplification in ESCC; these reports show low gene amplification frequencies in this tumor [24,25]. Mimura *et al.* (2005) found that 11% of cases showed HER-2/neu amplification, including all cases considered 3+ by immunohistochemical analysis and 3/6 (50%) of those considered 2+ [24]. These authors also demonstrated that cases with gene amplification had lower survival rates. A study

by Sunpaweravong *et al.* (2005) showed gene amplification in 2% of cases, but this factor was not associated with overall survival [26]. Similar results were presented by Reichelt *et al.* (2007), in which 5% of the ESCC were positive for amplification of HER-2/neu; however, amplification did not influence prognosis [25].

Although recognition of gene amplification may be a key factor in therapeutic decision-making, there is a paucity of data regarding HER-2/neu amplification in ESCC. In this study, we detect gene amplification of HER-2/neu by fluorescence *in situ* hybridization and evaluate protein expression by immunohistochemistry in ESCC. We discuss the relationship between the clinicopathological features of this disease and the prognostic value of HER-2/neu amplification.

Methods

ESCC cases and specimens

This study was performed with the approval of the Ethics Committee of Hospital A. C. Camargo, São Paulo, Brazil (Protocol n. 530/03). It utilized archival formalin-fixed paraffin-embedded tissues from surgical specimens of 199 ESCC cases treated at Hospital A. C. Camargo between 1980 and 1999. From these 199 cases, 427 samples were analyzed using the Tissue Microarray (TMA) technique.

The samples were distributed into three TMA paraffin blocks containing 1 mm cores of 143 samples in each of two blocks and 141 in a third. One hundred and fifty-three cases were represented by more than one sample in the TMA blocks. All samples were spotted in duplicate, corresponding to different areas of the same original paraffin block. Slides of 3 µm were obtained by adhesives specific for the technique (Instrumedics Inc.). The TMA blocks were constructed with "Manual Tissue Arrayer I" (Beecher Instruments Inc.).

For all cases we reviewed age, gender, ethnicity, location of primary tumor, histological grade, extent of infiltration, lymphatic and venous invasion, and evolution of disease. The clinicopathological data are summarized in Table 1.

The follow-up time ranged from 1 to 200 months with an average of 21.8 months. The ages of the 199 patients selected for this study ranged from 37 to 80 years, with a mean of 57 years (standard deviation = 9).

Immunohistochemistry

The immunohistochemical reactions were realized by the streptavidin-biotin-peroxidase complex technique (StreptABC, DAKO, Denmark). The tissue sections were deparaffinized and incubated in citrate buffer in a pressure cooker for antigenic retrieval, then endogenous peroxidase activity was blocked with 3% H₂O₂. The sections

Table 1: Clinicopathological findings of ESCC cases selected for this study

Variable	Category	N (%)	Total
Gender	Male	161 (80.9)	199
	Female	38 (19.1)	
Ethnicity	Caucasian	148 (74.4)	199
	Not Caucasian	42 (21.1)	
	No data available	9 (4.5)	
Tumor location	Upper	34 (17.1)	199
	Middle	104 (52.3)	
	Lower	50 (25.1)	
	No data available	11 (5.5)	
Histological grade	G1	62 (31.2)	199
	G2	93 (46.7)	
	G3	42 (21.1)	
	G4	2 (1)	
Infiltration level	Basal layer	9 (4.5)	199
	Muscular	42 (21.1)	
	Adventitia	148 (74.4)	
Lymphatic invasion	Not observed	160 (80.4)	199
	Present	39 (19.6)	
Venous invasion	Not observed	58 (29.1)	199
	Present	141 (70.9)	
pN	Negative	107 (53.8)	199
	Positive	89 (44.7)	
	No data available	3 (1.5)	
Surgical margins	Not committed	6 (3.0)	199
	Committed	188 (94.5)	
	No data available	5 (2.5)	
Stage	I	6 (3)	199
	II	86 (43.2)	
	III	53 (26.6)	
	IV	52 (26.1)	
	No data available	2 (1)	
Tumor recurrence	Negative	87 (43.7)	199
	Positive	110 (55.3)	
	No data available	2 (1)	
Evolution of disease	Death from disease	153 (76.9)	199
	Alive without disease	7 (3.5)	
	Alive with disease	1 (0.5)	
	No follow-up	38 (19.1)	

were then incubated with polyclonal primary antibodies against c-erbB-2 (1:500, A0485, DAKO, Denmark). Subsequently, they were incubated in secondary biotinylated antibody from LSAB+ peroxidase Kit (DAKO, K0690, Denmark), followed by incubation with Streptavidin HRP

(DAKO, Denmark), and were counterstained with Hematoxylin.

Immunohistochemical analyses of c-erbB-2 expression describe the intensity and staining pattern of tumor cells.

The FDA-recognized test, the Herceptest™ (DAKO), describes four categories: no staining, or weak staining in fewer than 10% of the tumor cells (0); weak staining in part of the membrane in more than 10% of the tumor cells (1+); complete staining of the membrane with weak or moderate intensity in more than 10% of the neoplastic cells (2+); and strong staining in more than 10% (3+).

Each sample was categorized in one of three groups according to the following criteria: most of the cores had 0 and/or 1+ expression (Negative Group); at least 50% of the cores had 2+ expression and none had 3+ (Potential Positive Group); and at least one case had 3+ expression and none had 0/1+ (Positive Group).

Two slides of each TMA block, separated by about 40 sections, were subjected to immunohistochemistry. Because each sample was spotted in duplicate in each TMA block, there were four immunohistochemical analyses for each specimen. In addition, because each case could be represented by more than one sample in the TMA blocks, more than four cores could be obtained in each case for each marker.

Dual-color Fluorescence in situ Hybridization

One slide of each TMA block was subjected to hybridization reactions. HER2/neu amplification was analyzed using FISH HER2 PharmDx (Dako, K5331, Denmark), which contains both fluorescently-labeled HER2/neu gene and chromosome 17 centromere probes.

In brief, the sections were incubated at 56°C overnight and deparaffinized by washing in xylene, ethanol and distilled water. After incubation in 0.2 M HCl at room temperature for 20 minutes they were heat-pretreated in citrate buffer (2 × SSC, pH 6.0) at 80°C for 1 to 1.5 hours. They were then digested with pepsin at room temperature for 8–14 minutes, rinsed in 2 × SSC at room temperature for 2 minutes and dehydrated in graded ethanol (75, 80, and 100%) for 2 minutes.

After the HER2/CEN17 probe mix was applied to the dry slides, the tissue area was coverslipped and sealed with rubber cement. The slides were then incubated in hybridizer (Hybridizer Instrument for *in situ* hybridization, DAKO, S2450, Denmark) for denaturation at 82°C for 5 minutes and hybridization at 45°C for about 18 hours.

Posthybridization washes were performed in urea/0.1 × SSX at 45°C for 30 minutes and in 2 × SSC at room temperature for 2 minutes. The slides were dehydrated in graded ethanol, and after application of 15 µL of mounting medium containing 4',6'-diamidino-2-phenylindole (DAPI), the tissue area was coverslipped.

FISH analyses were performed according to the HER2 FISH PharmDx (Dako, Denmark) criteria. In each case, 100 non-overlapped, intact interphase tumor nuclei identified by DAPI staining were evaluated, and gene (red signal) and CEN17 (green signal) copy numbers in each nucleus were assessed. The cases were considered to be amplified when the average copy number ratio, HER2/CEN17, was ≥ 2.0 in all nuclei evaluated or when the HER2 signals formed a tight gene cluster. Among the cases in which the gene was not amplified, samples showing more than four copies of the HER2 gene and more than four CEN17 in more than 10% of the tumor cells were considered to be polysomic for chromosome 17.

Statistical analyses

All statistical analyses were performed using SPSS for Windows 13.0, SPSS Inc. Categorical variables were compared by the Pearson chi-square test or Fisher's exact test, depending on the expected values found in the contingency table. The overall survival rates were calculated using the Kaplan-Meier method and the curves were compared by the log-rank test. In all statistical tests, the alpha error was set at 5%. The survival period was calculated from the date of hospital admission to death or the date of last follow-up.

Results

c-erbB-2 immunohistochemistry

Expression of c-erbB-2 was analyzed in 185 cases of ESCC according to the membrane staining pattern of the tumor cells. One hundred and seventeen cases (63.2%) were negative and 68 (36.8%) were positive, of which 56 (30.3%) were 2+ and 12 (6.5%) were 3+ (Figure 1).

Statistical analysis revealed no significant association between c-erbB-2 expression and the clinicopathological findings. The data are summarized in Table 2. Furthermore, univariate analysis showed that c-erbB-2 expression was not significantly associated with overall survival (Figure 2).

HER-2/neu amplification

The same cases evaluated by immunohistochemistry were also examined using FISH. Of the 199 cases, 47 were suitable for evaluating gene amplification. In the remaining 138 cases there was no HER2 gene or CEN17 hybridization signal, or these samples showed collapsed nuclei. Gene amplification was found in nine (19.1%) of the cases; 38 (80.9%) showed no amplification (Figure 3). Among the cases in which amplification was not found, five (13.2%) had polysomy of chromosome 17.

When the FISH results were compared with the c-erbB-2 immunohistochemical data, six (66.7%) of the nine cases with gene amplification showed positive expression (3+ IHC) for this protein. Three (33.3%) were not available

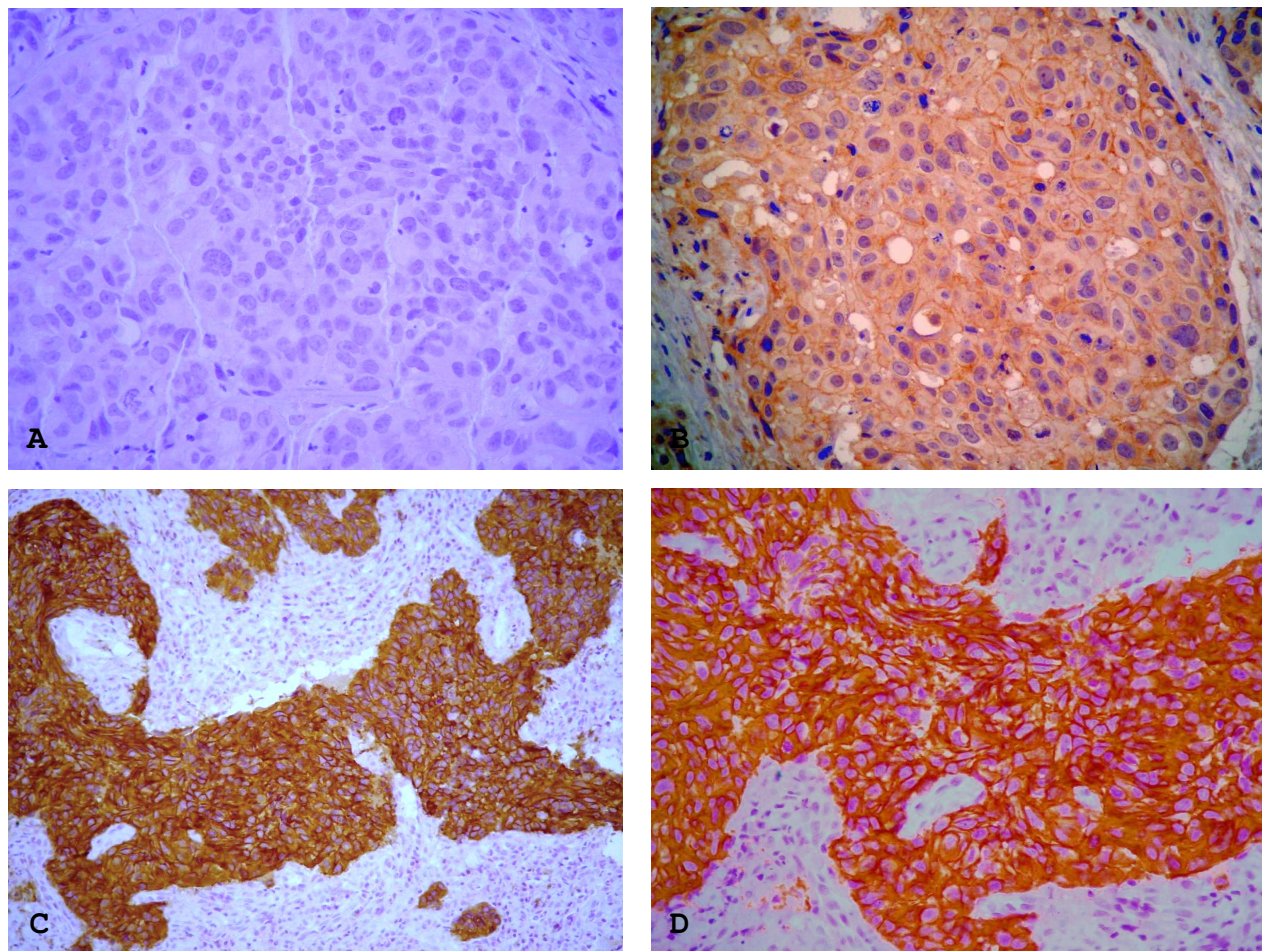


Figure 1
Immunohistochemistry showing c-erbB-2 membrane staining in ESCC. (a) sample negative for expression of this protein, 400 \times ; (b) positive case 2+, 400 \times ; (c) and (d) positive cases 3+, 400 \times .

for immunohistochemistry, as shown in Table 3. None of the amplified cases was negative or had 2+ protein expression as assessed by immunohistochemistry. Otherwise, among the cases in which gene amplification was not found, 11 (28.9%) and 15 (39.5%) were 0/1+ and 2+ by IHC, respectively. However, six (15.8%) cases lacking gene amplification showed positive (3+ IHC) expression. Of the five cases showing polysomy of chromosome 17, two (40%) were 3+ IHC, two (40%) were 2+, and one (20%) was negative (0/1+ IHC).

In view of the low number of cases studied, it was not possible to compare the FISH results and clinicopathological findings statistically (data not shown).

According to the Kaplan-Meier method, there was a significant difference ($p = 0.003$) between the survival rates when cases with and without gene amplification were

compared. Cases demonstrating gene amplification showed the worst survival rates (Figure 4).

Discussion

The TMA technique provides a high-throughput means of evaluating genetic alterations in a great number of tumor samples. Sections from TMA blocks can be used for FISH, allowing gene amplification to be evaluated in hundreds of tumor samples on a single slide.

Immunohistochemical analysis showed that 36.8% of the cases were positive for expression of c-erbB-2. The few studies reporting c-erbB-2 expression in ESCC show discrepant frequencies ranging from 0 to 64% [27-31]. This variability may have resulted from differences in immunohistochemical protocols, different antibody sources used by the different authors, or different criteria for evaluating expression.

Table 2: Association between c-erbB-2 expression and clinicopathological data in 185 cases of ESCC analyzed by TMA

Variables	Category	c-erbB-2			p value
		Negative [0 and 1+] (%)	Positive [2 and 3+] (%)	Total	
Gender	Male	97 (82.9)	52 (76.5)	149	0.337
	Female	20 (17.1)	16 (23.5)	36	
Age	< 60 years	61 (54.5)	46 (69.7)	107	0.057
	≥ 60 years	51 (45.5)	20 (30.3)	71	
Ethnicity	Caucasian	84 (77.1)	52 (77.6)	136	1.000
	No Caucasian	25 (22.9)	15 (22.4)	40	
Tumor location	Upper	18 (16.2)	12 (18.8)	30	0.781
	Middle	65 (58.6)	34 (53.1)	99	
	Lower	28 (25.2)	18 (28.1)	46	
Histological grade	G1+G2	87 (74.4)	57 (83.8)	144	0.147
	G3+G4	30 (25.6)	11 (16.2)	41	
Infiltration level	Basal layer	5 (4.3)	0 (0)	5	NA
	Muscular	22 (18.8)	17 (25)	39	
	Adventitia	90 (76.9)	51 (75)	141	
Lymphatic invasion	Not observed	30 (25.6)	19 (27.9)	49	0.733
	Present	87 (74.4)	49 (72.1)	136	
Venous invasion	Not observed	95 (81.2)	54 (79.4)	149	0.848
	Present	22 (18.8)	14 (20.6)	36	
pN	Negative	63 (53.8)	36 (52.9)	99	1.000
	Positive	54 (46.2)	32 (47.1)	86	
Surgical margins	Not committed	110 (95.7)	67 (98.5)	177	NA
	Committed	5 (4.3)	1 (1.5)	6	
Stage	1+2	58 (49.6)	27 (39.7)	85	0.222
	3+4	59 (50.4)	41 (60.3)	100	
Recurrence	Negative	49 (42.6)	28 (41.8)	77	1.000
	Positive	66 (57.4)	39 (58.2)	105	

NA: not available

We found no significant association between c-erbB-2 expression and the clinicopathological findings. Most reported studies agree with our results and report no influence of c-erbB-2 expression on ESCC prognosis [27,28,32]; however, a study performed by Lam *et al.* (1998) demonstrated a significant association between this protein and histological grade [29], and a recent study showed that c-erbB-2 overexpression is associated with lower rates of survival [33].

The reported frequencies of HER-2/neu amplification in ESCC vary from 2 to 11% of cases [24-26]. This variability

may have resulted from differences in tissue preparation, probes, and the methods used to evaluate the alterations. Our study demonstrated gene amplification in 20% of cases, higher than any previously reported frequency [24-26].

In this study, 199 cases were subjected to immunohistochemical evaluation; 47 were also suitable for FISH analysis. The remaining cases had complete loss of tumor cores from the TMA or fewer than 100 tumor nuclei were available for evaluation, or the samples were under- or over-digested, resulting in absence of hybridization signals and loss of cell and nuclear morphology.

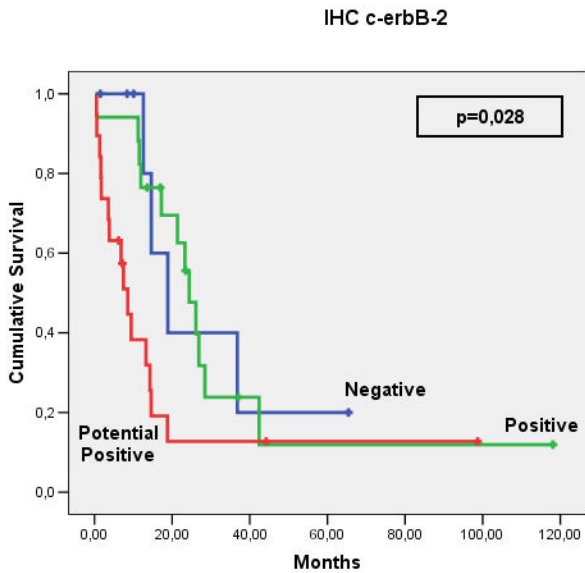


Figure 2
Overall survival according to HER-2/neu expression.
 c-erbB-2 expression in 185 cases of ESCC.

One of the problems with the TMA technique for FISH is that fixatives such as formalin preserve the tissue structure by forming cross-bridges, which reduce the access of the probes to their targets. Another important challenge in FISH analysis is to standardize the tissue digestion on TMA: the hundreds of samples on one slide may differ in tissue type, fixation methods and age. Successful FISH analysis depends on a pretreatment protocol that is consistent in the use of digesting agents (sodium thiocyanate, pepsin or proteinase K) as well as appropriate conditions

(concentration, temperature and time of incubation) to unmask the target DNA and optimize hybridization. The presence of hundreds of tissue cores on a TMA slide compounds the difficulty of optimization; a given set of conditions appropriate for some samples may over- or under-digest others.

Among the 47 cases suitable for FISH analysis, only those that were 3+ positive for immunohistochemistry showed HER-2/neu amplification (66.7%). The remaining 33.3% of the amplified cases were not suitable for immunohistochemical evaluation because there were no tumor cells in the cores or the tissue cores were completely lost from the TMA.

Mimura *et al.* (2005) found results similar to those of the present study, but as well as all the 3+ cases, 50% of their 2+ cases also showed gene amplification [24]. Another study reported a significant association between gene amplification and protein overexpression in 70% of 3+ and in 30% of 2+ amplified cases [25]. In contrast to these results, Sunpaweravong *et al.* (2005) found no significant association between gene amplification and immunohistochemical expression; the one case positive for amplification did not overexpress c-erbB-2 [26].

With respect to overall survival, our data are in agreement with the findings of Mimura *et al.* (2005), showing significant differences in survival rates in cases with gene amplification [24]. The significant association between HER-2/neu amplification and lower survival rate indicates a role for this gene alteration analysis in the prognosis of ESCC cases.

Our results did not show that c-erbB-2 expression has a prognostic value in ESCC. In contrast, Mimura *et al.*

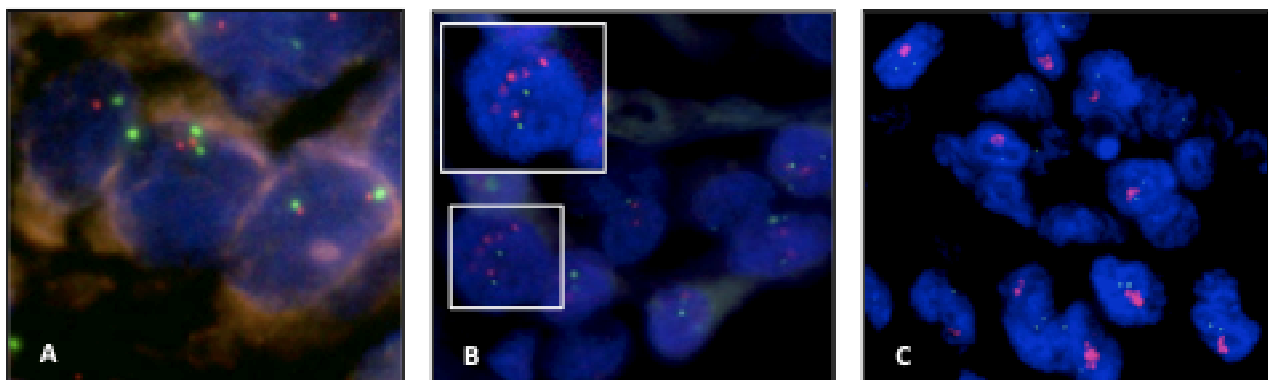


Figure 3
Analysis of HER-2/neu gene amplification in 47 cases of ESCC. (a) Samples with no amplification; (b) case considered amplified. In detail, nucleus shows ratio ≥ 2 and (c) gene amplification showing cluster pattern. 1000 \times .

Table 3: Comparison of gene amplification analysis and immunohistochemical results of HER-2/neu in 47 cases of ESCC

IHC c-erbB-2	FISH HER-2			Total
	Not Amplified (%)	Polysomy 17 (%)	Amplified (%)	
0/1+	10 (30.3)	1 (20)	0 (0)	11
2+	13 (39.4)	2 (40)	0 (0)	15
3+	4 (12.1)	2 (40)	6 (66.7)	12
NA	6 (18.2)	0 (0)	3 (33.3)	9
Total	33 (100)	5 (100)	9 (100)	47

NA: not available

(2005) found that the survival rate in the HER-2-positive group was significantly worse than that in the HER-2-negative group. Despite the concordance between the FISH and immunohistochemistry results, only the presence of gene amplification seems to affect prognosis in ESCC. Unlike the previous report, FISH and immunohistochemistry analyses were performed on different numbers of cases (47 and 185, respectively) in the current study, which could have contributed to the discrepancy between the two studies [24]. Further studies with more cases are necessary for a better understanding of the influence of this gene on ESCC progression.

Tumors showing c-erbB-2 overexpression but not gene amplification could occur because of transcriptional or

post-transcriptional alterations, polysomy of chromosome 17 or even technical problems such as the high sensitivity of the immunohistochemical procedure. In the current study, the assessment of the number of copies of chromosome 17 showed that some 3+ cases could have resulted from polysomy 17. Transcriptional or post-transcriptional alterations were not evaluated in the present study; further studies employing other techniques such as RT-PCR would be required. Alternatively, the greater sensitivity of immunohistochemistry compared with FISH could also account for this result.

Nonetheless, our results corroborate previous reports that most c-erbB-2 overexpression is caused by gene amplification [14]. There is a consensus that c-erbB-2 expression must be evaluated initially by immunohistochemistry and, if the results are not conclusive, FISH should be performed. Such a practice has been standard procedure to assist in making therapeutic decisions in breast and lung cancer cases [12-15].

Trastuzumab (Herceptin) prolongs survival in metastatic breast cancer patients whose tumours overexpress the HER2/neu protein [34]. Similarly, patients with ESCC having HER-2/neu gene amplification might also benefit from treatment with Trastuzumab, since HER-2/neu amplification indicates a group of cases in which this type of treatment could improve the prognosis [24,35].

Conclusion

Our results indicate that HER-2/neu gene amplification is an important prognostic indicator in ESCC. Further studies with more cases and including additional techniques are necessary to verify other molecular alterations involved in tumor progression, thus assisting in the development of new therapies for ESCC.

Competing interests

The authors declare that they have no competing interests.

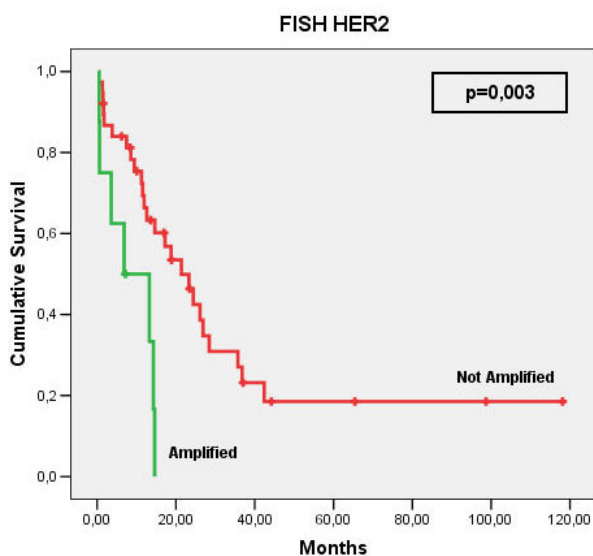


Figure 4
Overall survival according to HER-2/neu amplification. HER-2/neu amplification in 47 cases of ESCC.

Authors' contributions

YSK designed the study, evaluated the immunohistochemistry and FISH results and wrote the manuscript. JIN carried out all the immunohistochemistry and FISH reactions. JHTGF performed all the statistical analyses. RAS performed the surgical procedures and evaluated the clinical records. FAS designed the study, assisted in analysis of immunohistochemistry results, and wrote the manuscript. All authors read and approved the manuscript.

Acknowledgements

The authors thank Carlos Ferreira Nascimento and Severino Ferreira da Silva for providing technical assistance and Dr. Maisa Yoshimoto and Dr. Jeremy A. Squire for assistance in standardizing the FISH protocol. This study was supported by grants from the Fundação de Apoio a Pesquisa do Estado de São Paulo (FAPESP) and Coordenação de Aperfeiçoamento de Pessoal de Nível Superior (CAPES).

References

- Mascarello JT, Brothman AR, Davison K, Dewald GW, Herrman M, McCandless D, Park JP, Persons DL, Rao KW, Schneider NR, Vance GH, Cooley LD: **Proficiency testing for laboratories performing fluorescence in situ hybridization with chromosome-specific DNA probes.** *Arch Pathol Lab Med* 2002, **126(12)**:1458.
- Ministério da Saúde. Secretaria de Atenção à Saúde. Instituto Nacional do Câncer. **Coordenação de Prevenção e Vigilância. Estimativa 2005: Incidência de Câncer no Brasil.** In *Estimativa 2005: Incidência de Câncer no Brasil* Rio de Janeiro: Rio de Janeiro: INCA; 2005.
- Dietz J, Pardo SH, Furtado CD, Harzheim E, Furtado AD: **[Risk factors related to esophageal cancer in Rio Grande do Sul, Brazil].** *Rev Assoc Med Bras* 1998, **44(4)**:269-272.
- Engel LS, Chow WH, Vaughan TL, Gammon MD, Risch HA, Stanford JL, Schoenberg JB, Mayne ST, Dubrow R, Rotterdam H, West AB, Blaser M, Blot WJ, Gail MH, Fraumeni JF Jr: **Population attributable risks of esophageal and gastric cancers.** *J Natl Cancer Inst* 2003, **95(18)**:1404-1413.
- Fujita H, Kakegawa T, Yamana H, Shima I, Toh Y, Tomita Y, Fujii T, Yamasaki K, Higaki K, Noake T, Ishibashi N, Mizutani K: **Mortality and morbidity rates, postoperative course, quality of life, and prognosis after extended radical lymphadenectomy for esophageal cancer. Comparison of three-field lymphadenectomy with two-field lymphadenectomy.** *Ann Surg* 1995, **222(5)**:654-662.
- Nakagawa S, Kanda T, Kosugi S, Ohashi M, Suzuki T, Hatakeyama K: **Recurrence pattern of squamous cell carcinoma of the thoracic esophagus after extended radical esophagectomy with three-field lymphadenectomy.** *J Am Coll Surg* 2004, **198(2)**:205-211.
- Tachibana M, Kinugasa S, Yoshimura H, Shibakita M, Tonomoto Y, Dhar DK, Nagasue N: **Clinical outcomes of extended esophagectomy with three-field lymph node dissection for esophageal squamous cell carcinoma.** *Am J Surg* 2005, **189(1)**:98-109.
- Andl CD, Mizushima T, Nakagawa H, Oyama K, Harada H, Chruma K, Herlyn M, Rustgi AK: **Epidermal growth factor receptor mediates increased cell proliferation, migration, and aggregation in esophageal keratinocytes in vitro and in vivo.** *J Biol Chem* 2003, **278(3)**:1824-1830.
- Rowinsky EK: **Signal events: Cell signal transduction and its inhibition in cancer.** *Oncologist* 2003, **8(Suppl 3)**:5-17.
- Roskoski R Jr: **The ErbB/HER receptor protein-tyrosine kinases and cancer.** *Biochem Biophys Res Commun* 2004, **319(1)**:1-11.
- Gebhart E: **Double minutes, cytogenetic equivalents of gene amplification, in human neoplasia - a review.** *Clin Transl Oncol* 2005, **7(11)**:477-485.
- Cappuzzo F, Hirsch FR, Rossi E, Bartolini S, Ceresoli GL, Bemis L, Haney J, Witts S, Danenberg K, Domenichini I, Ludovini V, Magrini E, Gregorc V, Dogliani C, Sidoni A, Tonato M, Franklin WA, Crino L, Bunn PA Jr, Varella-Garcia M: **Epidermal growth factor receptor gene and protein and gefitinib sensitivity in non-small-cell lung cancer.** *J Natl Cancer Inst* 2005, **97(9)**:643-655.
- Cappuzzo F, Varella-Garcia M, Shigematsu H, Domenichini I, Bartolini S, Ceresoli GL, Rossi E, Ludovini V, Gregorc V, Toschi L, Franklin WA, Crino L, Gazdar AF, Bunn PA Jr, Hirsch FR: **Increased HER2 gene copy number is associated with response to gefitinib therapy in epidermal growth factor receptor-positive non-small-cell lung cancer patients.** *J Clin Oncol* 2005, **23(22)**:5007-5018.
- Hofmann M, Stoss O, Gaiser T, Kneitz H, Heinmoller P, Gutjahr T, Kaufmann M, Henkel T, Ruschoff J: **Central HER2 IHC and FISH analysis in a trastuzumab (Herceptin(R)) Phase II monotherapy study: assessment of test sensitivity and impact of chromosome 17 polysomy.** *J Clin Pathol* 2007.
- Tsuda H: **HER-2 (c-erbB-2) test update: present status and problems.** *Breast Cancer* 2006, **13(3)**:236-248.
- Bhargava R, Gerald WL, Li AR, Pan Q, Lal P, Ladanyi M, Chen B: **EGFR gene amplification in breast cancer: correlation with epidermal growth factor receptor mRNA and protein expression and HER-2 status and absence of EGFR-activating mutations.** *Mod Pathol* 2005, **18(8)**:1027-1033.
- Koynova DK, Tsenova VS, Jankova RS, Gurov PB, Toncheva DI: **Tissue microarray analysis of EGFR and HER2 oncogene copy number alterations in squamous cell carcinoma of the larynx.** *J Cancer Res Clin Oncol* 2005, **131(3)**:199-203.
- Lassus H, Sihto H, Leminen A, Joensuu H, Isola J, Nupponen NN, Butzow R: **Gene amplification, mutation, and protein expression of EGFR and mutations of ERBB2 in serous ovarian carcinoma.** *J Mol Med* 2006, **84(8)**:671-681.
- Loring P, Cummins R, O'Grady A, Kay EW: **HER2 positivity in breast carcinoma: a comparison of chromogenic in situ hybridization with fluorescence in situ hybridization in tissue microarrays, with targeted evaluation of intratumoral heterogeneity by in situ hybridization.** *Appl Immunohistochem Mol Morphol* 2005, **13(2)**:194.
- Mayr D, Kanitz V, Amann G, Engel J, Burges A, Lohrs U, Diebold J: **HER-2/neu gene amplification in ovarian tumours: a comprehensive immunohistochemical and FISH analysis on tissue microarrays.** *Histopathology* 2006, **48(2)**:149-156.
- Awaya H, Takeshima Y, Furonaka O, Kohno N, Inai K: **Gene amplification and protein expression of EGFR and HER2 by chromogenic in situ hybridisation and immunohistochemistry in atypical adenomatous hyperplasia and adenocarcinoma of the lung.** *J Clin Pathol* 2005, **58(10)**:1076-1080.
- Dandachi N, Dietze O, Hauser-Kronberger C: **Chromogenic in situ hybridization: a novel approach to a practical and sensitive method for the detection of HER2 oncogene in archival human breast carcinoma.** *Lab Invest* 2002, **82(8)**:1007-1014.
- Tanner M, Gancberg D, Di Leo A, Larsimont D, Rouas G, Piccart MJ, Isola J: **Chromogenic in situ hybridization: a practical alternative for fluorescence in situ hybridization to detect HER-2/neu oncogene amplification in archival breast cancer samples.** *Am J Pathol* 2000, **157(5)**:1467-1472.
- Mimura K, Kono K, Hanawa M, Mitsui F, Sugai H, Miyagawa N, Ooi A, Fujii H: **Frequencies of HER-2/neu expression and gene amplification in patients with oesophageal squamous cell carcinoma.** *Br J Cancer* 2005, **92(7)**:1253-1260.
- Reichelt U, Duesedau P, Tsourlakis MC, Quaas A, Link BC, Schurr PG, Kaifi JT, Gros SJ, Yekebas EF, Marx A, Simon R, Izbicki JR, Sauter G: **Frequent homogeneous HER-2 amplification in primary and metastatic adenocarcinoma of the esophagus.** *Mod Pathol* 2007, **20(1)**:120-129.
- Sunpaweravong P, Sunpaweravong S, Puttawibul P, Mitarnun W, Zeng C, Baron AE, Franklin W, Said S, Varella-Garcia M: **Epidermal growth factor receptor and cyclin D1 are independently amplified and overexpressed in esophageal squamous cell carcinoma.** *J Cancer Res Clin Oncol* 2004, **131**:111-119.
- Friess H, Fukuda A, Tang WH, Eichenberger A, Furlan N, Zimmermann A, Korc M, Buchler MW: **Concomitant analysis of the epidermal growth factor receptor family in esophageal cancer: overexpression of epidermal growth factor receptor mRNA but not of c-erbB-2 and c-erbB-3.** *World J Surg* 1999, **23(10)**:1010-1018.
- Hardwick RH, Barham CP, Ozua P, Newcomb PV, Savage P, Powell R, Rahamin J, Alderson D: **Immunohistochemical detection of p53**

- and c-erbB-2 in oesophageal carcinoma; no correlation with prognosis. *Eur J Surg Oncol* 1997, **23(1)**:30-35.
29. Lam KY, Tin L, Ma L: **C-erbB-2 protein expression in oesophageal squamous epithelium from oesophageal squamous cell carcinomas, with special reference to histological grade of carcinoma and pre-invasive lesions.** *Eur J Surg Oncol* 1998, **24(5)**:431-435.
 30. Suo Z, Su W, Holm R, Nesland JM: **Lack of expression of c-erbB-2 oncoprotein in human esophageal squamous cell carcinomas.** *Anticancer Res* 1995, **15(6B)**:2797-2798.
 31. Suwanagool P, Parichatikanond P, Maeda S: **Expression of c-erbB-2 oncoprotein in primary human tumors: an immunohistochemistry study.** *Asian Pac J Allergy Immunol* 1993, **11(2)**:119-122.
 32. Wang LS, Chow KC, Chi KH, Liu CC, Li WY, Chiu JH, Huang MH: **Prognosis of esophageal squamous cell carcinoma: analysis of clinicopathological and biological factors.** *Am J Gastroenterol* 1999, **94(7)**:1933-1940.
 33. Dreilich M, Wanders A, Brattstrom D, Bergstrom S, Hesselius P, Wagenius G, Bergqvist M: **HER-2 overexpression (3+) in patients with squamous cell esophageal carcinoma correlates with poorer survival.** *Dis Esophagus* 2006, **19(4)**:224-231.
 34. Stebbing J, Copson E, O'Reilly S: **Herceptin (trastuzumab) in advanced breast cancer.** *Cancer Treat Rev* 2000, **26(4)**:287-290.
 35. Kawaguchi Y, Kono K, Mimura K, Mitsui F, Sugai H, Akaike H, Fujii H: **Targeting EGFR and HER-2 with cetuximab- and trastuzumab-mediated immunotherapy in oesophageal squamous cell carcinoma.** *Br J Cancer* 2007, **97(4)**:494-501.

Pre-publication history

The pre-publication history for this paper can be accessed here:

<http://www.biomedcentral.com/1471-2407/9/6/prepub>

Publish with **BioMed Central** and every scientist can read your work free of charge

"BioMed Central will be the most significant development for disseminating the results of biomedical research in our lifetime."

Sir Paul Nurse, Cancer Research UK

Your research papers will be:

- available free of charge to the entire biomedical community
- peer reviewed and published immediately upon acceptance
- cited in PubMed and archived on PubMed Central
- yours — you keep the copyright

Submit your manuscript here:
http://www.biomedcentral.com/info/publishing_adv.asp

