

Measuring the Impact of Rotavirus Acute Gastroenteritis Episodes (MIRAGE): A prospective community-based study

Martin Sénécal MSc¹, Marc Brisson PhD^{2,3}, Marc H Lebel MD⁴, John Yaremko MD⁵, Richard Wong MD⁶, Lee Ann Gallant MD⁶, Hartley A Garfield MD⁶, Darryl J Ableman MD⁷, Richard L Ward PhD⁸, John S Sampalis PhD^{2,5,9}, James A Mansi PhD¹; for the MIRAGE study group

M Sénécal, M Brisson, MH Lebel, et al; for the MIRAGE study group. Measuring the Impact of Rotavirus Acute Gastroenteritis Episodes (MIRAGE): A prospective community-based study. *Can J Infect Dis Med Microbiol* 2008;19(6):397-404.

BACKGROUND: Current assessments of the burden of rotavirus (RV)-related gastroenteritis are needed to evaluate the potential benefits of RV immunization interventions. The objective of the present study was to characterize the burden of RV gastroenteritis among children presenting in outpatient settings with gastroenteritis.

METHODS: Between January and June 2005, 395 children younger than three years of age presenting with gastroenteritis symptoms (at least three watery or looser-than-normal stools, or forceful vomiting within the previous 24 h period) were recruited from 59 Canadian clinics and followed for two weeks. Stool specimens were tested for the RV antigen. Gastroenteritis-related symptoms, health care utilization, parental work loss and other cases of gastroenteritis in the household were assessed by questionnaires and daily symptom cards that were completed by caregivers.

RESULTS: Of 336 conclusive test results, 55.4% were RV positive (RV+). In addition to diarrhea, 67.2% and 89.3% of RV+ children experienced fever or vomiting, respectively. Compared with RV-negative (RV-) children, RV+ children were more likely to experience the three symptoms concurrently (57.0% versus 26.7%; $P < 0.001$), to be hospitalized (12.9% versus 3.9%; $P = 0.008$) and to induce parental work loss (53.8% versus 37.3%; $P = 0.003$). The median duration of gastroenteritis was eight days for RV+ children (nine days for RV- children). Additional cases of gastroenteritis were present in 46.8% of households in the RV+ group (51.3% of households in the RV- group).

CONCLUSIONS: RV gastroenteritis cases were more severe than other gastroenteritis cases, were hospitalized more often and were associated with considerably more work loss.

Key Words: Burden of illness; Gastroenteritis; Health care resource utilization; Rotavirus; Work loss

In both developed and developing countries, rotavirus (RV) remains a major cause of gastroenteritis among infants and young children (1). Severe dehydration that may lead to hospitalization is the most common consequence of RV gastroenteritis. In industrialized countries, RV gastroenteritis is the most frequent cause of hospitalization for dehydrating diarrhea and vomiting (2-9).

L'étude MIRAGE (pour *Measuring the Impact of Rotavirus Acute Gastroenteritis Episodes*) : Étude prospective basée dans la communauté

HISTORIQUE : Il est important de procéder à des évaluations actuelles du fardeau de la gastro-entérite liée au rotavirus (RV) si nous voulons évaluer les avantages potentiels des interventions d'immunisation anti-RV. L'objectif de la présente étude était de caractériser le fardeau de la gastro-entérite à RV chez des enfants non hospitalisés qui en sont atteints.

MÉTHODE : Entre janvier et juin 2005, 395 enfants de moins de trois ans vus pour des symptômes de gastro-entérite (au moins trois selles liquides ou plus molles que la normale ou vomissements violents au cours des 24 dernières heures) ont été recrutés dans 59 cliniques canadiennes et suivis pendant deux semaines. Les spécimens de selles ont été analysés pour recherche de l'antigène du RV. Les symptômes de gastro-entérite, l'utilisation des soins de santé, l'absentéisme des parents au travail et le déclenchement d'autres cas de gastro-entérite à la maison ont été évalués au moyen de questionnaires et de fiches quotidiennes de symptômes qui ont été complétées par les responsables des soins.

RÉSULTATS : Sur 336 tests concluants, 55,4 % étaient RV-positifs (RV+). En plus de la diarrhée, 67,2 % et 89,3 % des enfants RV+ présentaient respectivement de la fièvre ou des vomissements. Comparativement aux enfants RV-négatifs (RV-), les enfants RV+ étaient plus susceptibles de présenter concomitamment les trois symptômes, 57,0 % contre 26,7 %, $p < 0,001$, d'être hospitalisés 12,9 % contre 3,9 % ($p = 0,008$) et d'entraîner l'absentéisme des parents au travail (53,8 % contre 37,3 %, $p = 0,003$). La durée médiane de la gastro-entérite a été de huit jours chez les enfants RV+ (neuf jours chez les enfants RV-). D'autres cas de gastro-entérite se sont manifestés dans 46,8 % des foyers du groupe RV+ (51,3 % des foyers du groupe RV-).

CONCLUSION : Les cas de gastro-entérite à RV ont été plus graves que les autres cas de gastro-entérite, ont dû être hospitalisés plus souvent et ont été associés à beaucoup plus d'absentéisme au travail.

Recently, vaccines targeting the most common RV strains have been introduced, thus offering protection against RV gastroenteritis, with an anticipated impact on decreasing the associated burden of illness (3,10-17). Given that the burden of RV may not be consistent across different regions and over time, regional data that quantify the various aspects of the current burden of the disease are needed to facilitate the assessment of

¹Merck Frosst Canada Ltd, Montreal; ²Université Laval, Laval; ³Unité de recherche en santé des populations, Centre hospitalier affilié universitaire de Québec, Québec City; ⁴Centre hospitalier universitaire Sainte-Justine, Université de Montréal; ⁵McGill University Health Centre, Montreal, Québec; ⁶The University of Toronto, Toronto, Ontario; ⁷The University of British Columbia, Vancouver, British Columbia; ⁸Cincinnati Children's Hospital Medical Center, Cincinnati, Ohio, USA; ⁹JSS Medical Research, Montreal, Québec

Correspondence and reprints: Dr John S Sampalis, Department of Surgery, McGill University, 4492 St Catherine Street West, Westmount, Québec H3Z 1R7. Telephone 514-934-6116 ext 232, fax 514-934-9913, e-mail jsampalis@jssresearch.com

Received for publication January 7, 2008. Accepted June 4, 2008

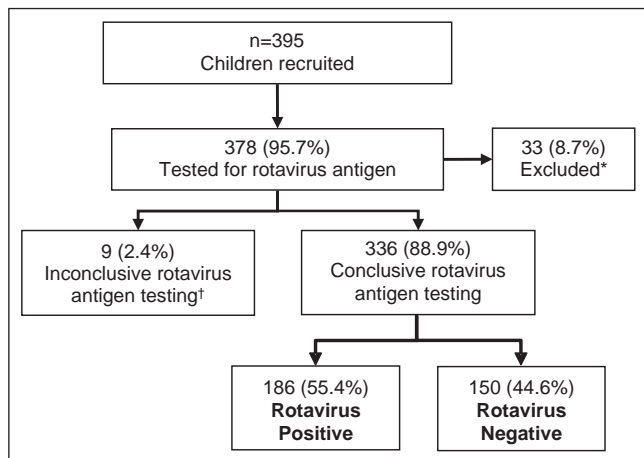


Figure 1) Study flow chart. *Patients for whom gastroenteritis symptoms began more than seven days before baseline physician visit; †Indeterminate result by ELISA testing

the potential benefit of immunization programs. In addition to providing valuable regional information, local studies will contribute to the data that will allow the assessment of the global RV gastroenteritis-related burden of illness, and will allow for the identification of between-region variations with respect to the epidemiology and burden of RV (3,15,18,19).

The current data in the literature have confirmed that RV gastroenteritis burden is significant in the United States (20-22), Europe (3,15,23-32) and Asia (33-42). With respect to Canada, there have been a number of published studies (43-45) that have described the epidemiology of RV gastroenteritis, but none have been conducted recently. Furthermore, Canadian studies (43,45) have mainly described RV gastroenteritis using data from hospitalized children, which limits both the understanding of the clinical presentation of RV gastroenteritis and its related burden of illness at the community level. At this point in time, considering the availability of RV vaccines, there is a need for recent data describing the societal impact of RV gastroenteritis.

The aim of the present prospective, community-based study was to characterize the burden of RV gastroenteritis episodes in infants and young children seeking health care for gastroenteritis in Canada. More specifically, the study describes symptoms, health care utilization, parental work loss and additional household gastroenteritis among children presenting with RV gastroenteritis in Canadian outpatient settings. A secondary objective of the study was to compare these aspects between RV-positive (RV+) and RV-negative (RV-) children experiencing gastroenteritis.

PATIENTS AND METHODS

Study design

The present study was a prospective, multicentre, observational study of children younger than three years of age presenting with gastroenteritis. Cohort inception took place between January 1 and June 31, 2005 – the expected epidemic RV season in Canada. Inclusion in the cohort took place at the time of presentation with gastroenteritis at the participating sites. Follow-up was for two weeks. Patients were enrolled from 59 practices across Canada, of which 28 (47%) were family physician and 31 (53%) were pediatrician practices. The majority of the sites (78.0%) were based in the provinces of Ontario (n=34) and Quebec (n=12). The other sites were based in the following provinces

– British Columbia (n=7), Manitoba (n=3), Saskatchewan (n=2) and Nova Scotia (n=1). Given that enrolment took place during the course of routine clinical practices, it was not feasible to ensure systematic recruitment of all eligible patients or to record all instances of eligible patients whose caregivers declined invitation to take part in the study. Therefore, the proportion of eligible patients who were included in the study sample was not documented.

The protocol and the informed consent sheet were approved by the Canadian SHIELD Ethics Review Board and the College of Physicians & Surgeons of Alberta.

Inclusion and exclusion criteria

To be eligible for inclusion in the study, patients had to be younger than three years of age at the time of presentation to the physicians' offices with gastroenteritis, and informed consent had to be provided by the parents or legal guardians. Inclusion criteria were defined as the presence of at least three watery or looser-than-normal stools, or forceful vomiting within the previous 24 h period. Patients were eligible irrespective of their gastroenteritis history, unless they had a gastroenteritis episode that required hospitalization. In addition, children for whom current gastroenteritis symptom onset was more than seven days before enrolment were excluded from the analysis. Patients were excluded if they had received treatment with antibiotics or immunoglobulins within 30 days before study entry. If the patient or the patient's mother was positive for HIV, hepatitis B or C, or had participated in an RV immunization program, he or she was also excluded from the study.

Data collection

At recruitment, the physician completed the case report form, which included questions about the patient (eg, age, sex, height and weight), and current and past symptoms attributable to the gastroenteritis episode. Caregivers completed a self-administered questionnaire regarding the socioeconomic setting, demographic profile, breastfeeding history and household characteristics, including the age of household members.

Within one week of recruitment, patient stool samples were obtained, refrigerated and shipped on dry ice to the Cincinnati Children's Hospital Medical Center (Ohio, USA). RV testing was conducted using ELISA developed at the James N Gamble Institute of Medical Research (Ohio, USA) (46,47). This test is a multistep procedure that uses a negative capture antibody control to eliminate false-positive reactions and biotin-avidin additions to increase the sensitivity of the assay. To be considered RV+, wells had to have an optic density of at least 0.31 and a positive to negative optic density ratio of at least 1.63. When the background was too high to be conclusive, specimens were diluted up to 1:50. If the values remained indeterminate, the results were reported as inconclusive. No information with respect to other etiological agents that may cause gastroenteritis was documented.

On days 1, 7 and 14 postrecruitment, caregivers completed a self-administered questionnaire that included questions regarding gastroenteritis-related emergency room (ER) visits and hospitalizations. The questionnaire also ascertained the work days lost by the father or the mother because of their child's (ie, the study patient) gastroenteritis episode. To document potential cases of RV transmissions between family members, caregivers were also asked whether there had been other cases of gastroenteritis in the household over a four-week period (from two weeks before to two weeks after enrolment of the study patient). Whether the

TABLE 1
Characteristics of children younger than three years of age presenting to physicians' offices with gastroenteritis*

Characteristic	Rotavirus positive (n=186)	Rotavirus negative (n=150)	P†
Age distribution in months			
<6	10 (5.4)	26 (17.3)	0.013
6–11	52 (28.0)	37 (24.7)	
12–17	53 (28.5)	29 (19.3)	
18–23	33 (17.7)	26 (17.3)	
24–29	17 (9.1)	16 (10.7)	
30–35	21 (11.3)	16 (10.7)	
Sex, male	109 (58.6)	79 (52.7)	0.276
Child care centre attendance	63 (33.9)	45 (30.0)	0.450
Ever been breastfed	122 (66.0)	111 (75.0)	0.073
At least one parent unemployed or on parental leave	98 (55.4)	83 (59.3)	0.484
Family income (\$)			
≤19,999	10 (5.4)	8 (5.3)	0.942
20,000–49,999	39 (21.0)	37 (24.7)	
50,000–69,999	22 (11.8)	18 (12.0)	
≥70,000	80 (43.0)	62 (41.3)	
Decline to reply	35 (18.8)	25 (16.7)	

Data are n (%) of patients. *Percentages reflect only patients for whom the information was available; †Statistical significance of the observed differences was determined using the χ^2 test for distributions of categorical variables and the Student's *t* test for means of continuous variables

other gastroenteritis episodes in the household began before or after the study patient's illness was not documented.

During the two-week follow-up, caregivers also completed daily symptom diary cards that recorded the presence and duration of diarrhea, vomiting and fever. Confirmed presence of diarrhea was defined as at least two watery or looser-than-normal stools per day; presence of fever was defined as a body temperature higher than 38°C at any time. During the two-week study follow-up period, caregivers were not aware of the RV results.

Statistical analysis

For each day of the study observation period (beginning from seven days before to 14 days after the baseline date), the proportion of patients with diarrhea, vomiting or fever, and with all three symptoms concurrently were described. The duration of each gastroenteritis episode was defined as the time elapsed from the onset of the first symptom (diarrhea, vomiting or fever) until all symptoms were resolved. An episode of diarrhea, vomiting or fever was assumed to be resolved when the specific symptom was absent for three consecutive days. In the data analysis, only the first incidence of each symptom was included; the occurrence of subsequent symptom incidences was not included in the analysis. For example, if diarrhea was reported on days 1 to 3 and then again on days 12 to 13, only the first incidence occurring from days 1 to 3 was included. The duration of a symptom episode was censored if it was still present at the end of follow-up or if an episode was reported at enrolment, but follow-up data for the episode were missing. When a symptom was not reported at enrolment and follow-up diary cards were not completed, the child was considered as not having experienced the symptom over the course of the disease.

TABLE 2
Symptoms experienced by children younger than three years of age who sought physician care because of gastroenteritis

	Rotavirus positive (n=186)	Rotavirus negative (n=150)	P*
Number of days between onset of the first symptom and baseline physician visit, mean ± SD	2.9±1.7	3.0±1.8	0.397
Symptoms experienced over the course of the disease, n (%)			
Diarrhea	186 (100.0)	146 (97.3)	0.025
Vomiting	166 (89.3)	99 (66.0)	<0.001
Fever	125 (67.2)	80 (53.3)	0.010
Symptom episodes beginning after baseline physician visit†, n (%)			
Diarrhea	0 (0.0)	3 (2.1)	0.050
Vomiting (n=166)	6 (3.6)	21 (21.2)	<0.001
Fever (n=125)	32 (25.6)	39 (48.8)	<0.001
Combination of symptoms, n (%)			
Single symptom	10 (5.4)	33 (22.0)	<0.001
Diarrhea and fever, but no vomiting	10 (5.4)	22 (14.7)	
Diarrhea and vomiting, but no fever	51 (27.4)	37 (24.7)	
Diarrhea, vomiting and fever	115 (61.8)	58 (38.7)	
Intensity of symptoms reported at baseline physician visit‡, mean ± SD			
Daily frequency of diarrhea§	5.4±3.5	5.1±2.5	0.254
Daily frequency of vomiting	4.3±3.0	2.8±2.1	<0.001
Highest recorded temperature (°C)	39.3±0.8	39.0±0.8	0.144
Duration of episodes, days, median (25th–75th percentile)¶			
Diarrhea	7 (5–10)	8 (6–12)	0.010
Vomiting	4 (3–6)	4 (2–6)	0.532
Fever	4 (2–5)	4 (2–6)	0.877
Gastroenteritis episode (any of the three symptoms)	8 (6–10)	9 (7–13)	<0.001
Duration with three concurrent symptoms, %¶¶			
≥1 day	57.0	26.7	<0.001
≥2 days	45.8	14.7	
≥4 days	23.7	3.2	

*Statistical significance of the observed differences was determined using the χ^2 test for distributions of categorical variables, the Student's *t* test for means of continuous variables and the log-rank test for durations; †The percentage is based on the number of children having experienced the symptom; ‡Represents episodes which began before baseline physician visit; §Number of watery or looser-than-normal stools; ¶Product-limit estimates

Work loss related to the gastroenteritis episode was described as the proportion of patients whose parents required time off from work. Similarly, the presence of other gastroenteritis episodes in family members was described as the proportion of patients whose household members experienced gastroenteritis during the two-week period before or the two-week period after the baseline visit, as well as the proportion of household members having experienced gastroenteritis during the four-week time window.

Gastroenteritis-related parameters were compared between RV+ and RV– groups. Student's *t* tests and χ^2 tests were used to assess the statistical significance of differences between means of

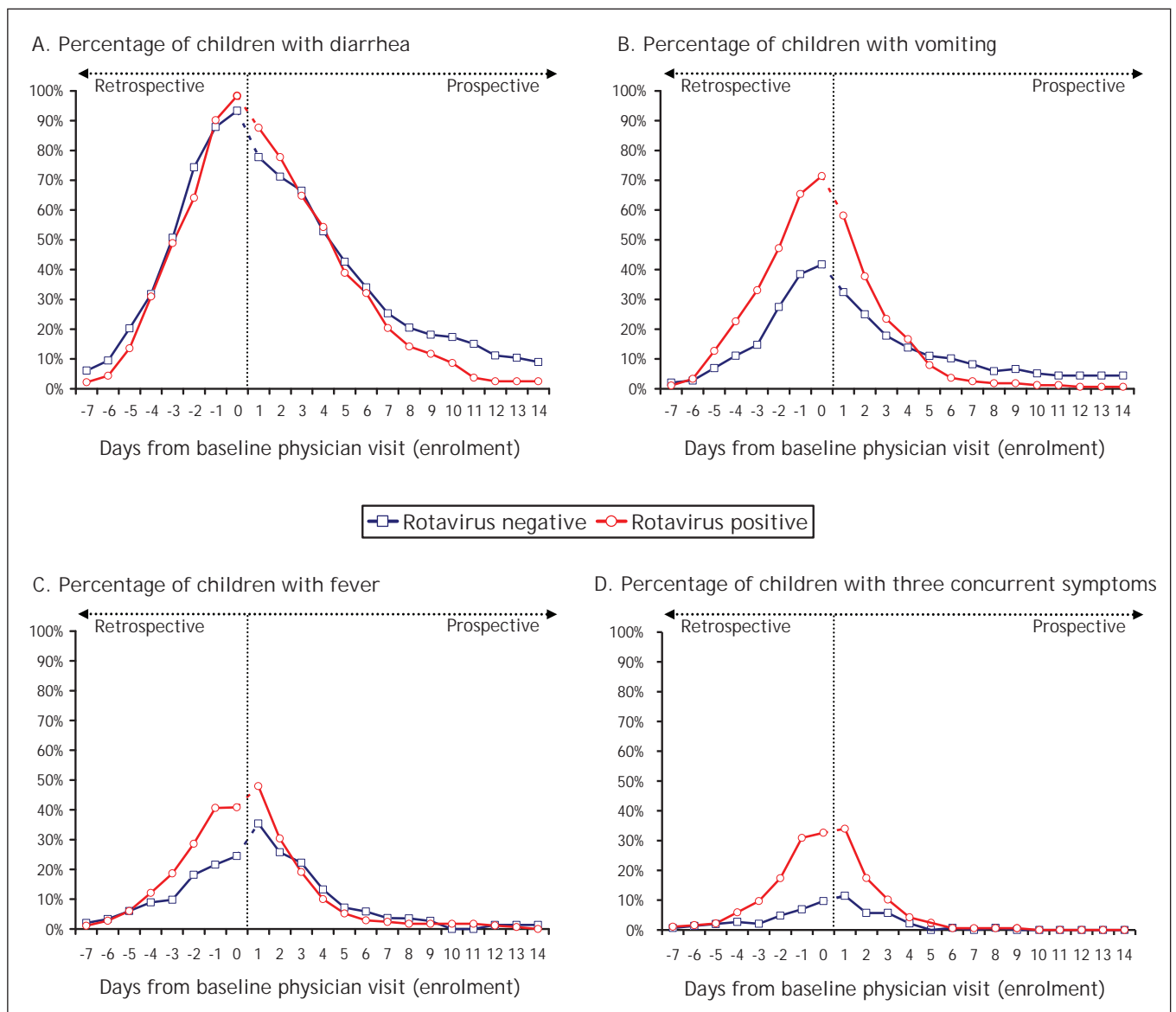


Figure 2) Presence of gastroenteritis symptoms over time – period going from seven days before baseline physician visit to 14 days after baseline physician visit (enrolment). At enrolment (day 0), the presence of symptoms for day –7 to day 0 was documented retrospectively by asking simple questions of caregivers about the presence and the onset of gastroenteritis symptoms. For day 1 to day 14, the daily presence of symptoms was documented prospectively through symptoms diary cards completed by caregivers

continuous variables and distributions of categorical variables, respectively. For each age group, the proportion of household members who experienced gastroenteritis was compared between the RV+ and RV– groups using logistic regression models with generalized estimating equations, which take into account the correlation between members of the same household. The duration of symptoms was analyzed using the Kaplan-Meier estimation method, and the statistical significance of differences between RV+ and RV– gastroenteritis cases with respect to the duration of symptoms was assessed using log-rank tests.

RESULTS

Study population

A total of 395 children were recruited, 378 (95.7%) of whom had their stools tested for RV antigen. There were 33 (8.7%) (14 RV+; 19 RV–) patients who were excluded from the analysis

due to symptom onset of more than seven days before enrolment. Nine (2.4%) additional children were excluded due to inconclusive RV test results. Of the remaining 336 children, 186 (55.4%) were RV+ and 150 (44.6%) were RV– (Figure 1). The two symptom diary cards were returned for 285 (84.8%) patients (86.0% RV+ and 83.3% RV–).

Description of study sample

The age distribution of children with RV+ and RV– gastroenteritis differed significantly ($P=0.013$), with the proportion of patients younger than six months of age in the RV– group being higher than the proportion of patients in the RV+ group (Table 1). Although not statistically significant, a higher proportion of RV– children had been breastfed compared with the RV+ group. Other baseline characteristics, including sex, child care, parents' employment status and family income were similar between RV+ and RV– patients (Table 1).

Gastroenteritis symptoms

Table 2 describes the presence and duration of gastroenteritis symptoms during the study period. Patients were enrolled in the study for an average of three days after the onset of the first gastroenteritis symptom. During the entire course of the disease, diarrhea was observed in all RV+ children, while vomiting and fever were observed in 89.3% and 67.2%, respectively. All three symptoms were experienced by 61.8% of RV+ children and the majority (57.0%) of those experienced the three symptoms concurrently for at least one day. Compared with the RV- patients, those who were RV+ were more likely to experience multiple and concurrent gastroenteritis symptoms ($P<0.001$). In addition, among children who had experienced vomiting at presentation, those who were RV+ vomited more frequently compared with the RV- patients ($P<0.001$). Although the duration of vomiting and fever was similar for RV+ and RV- children, diarrhea episodes were longer in duration for RV- children ($P=0.010$), resulting in a longer gastroenteritis episode compared with the RV+ group ($P<0.001$). However, the duration of all concurrent symptoms was higher for the RV+ patients ($P<0.001$).

Figure 2 describes the proportion of patients with each individual symptom (Figures 2A, 2B and 2C) and all three gastroenteritis symptoms (Figure 2D) during the time period between seven days before the baseline visit and 14 days after the baseline visit. The prevalence of diarrhea and vomiting peaked on the day of the baseline physician visit, while the prevalence of fever and presence of three concurrent symptoms peaked on the day following enrolment. Diarrhea episodes started at approximately the same time for both groups, but vomiting and fever occurred later in the RV- group. Among RV+ and RV- children respectively, vomiting episodes began 2.3 and 1.1 days before baseline physician visit ($P<0.001$) and fever episode onset occurred 1.4 days before and 0.2 day after enrolment ($P=0.003$).

Health care resource utilization

Table 3 summarizes the data regarding health care resource utilization in the study sample. RV+ patients were significantly more likely to be hospitalized than RV- patients (12.9% versus 3.9%; $P=0.008$). Of the RV+ patients, 16.4% visited the ER but were not hospitalized, of whom 11.1% were rehydrated intravenously. In the RV- group, 11.8% visited the ER without being admitted and none of these children required intravenous (IV) rehydration. Overall, compared with RV- children, RV+ children were more likely to visit an ER or to be hospitalized (29.3% versus 15.7%, $P=0.008$) and to be IV rehydrated (13.2% versus 3.2%, $P=0.002$).

Work loss due to gastroenteritis

The data describing parental work loss related to the gastroenteritis episode of the study patients are reported in Table 3. Parents of RV+ patients were more likely to miss work due to the gastroenteritis episode than parents of RV- patients ($P=0.003$). Among RV+ children, 21.0% of parents who had taken time off work missed more than four days of work, compared with 14.3% of parents of RV- patients ($P=0.002$).

Overall, the average number of parental work days lost per family was higher in the RV+ group than the RV- group (1.5 days versus 0.9 day; $P=0.003$). As expected, families in which both parents were working were more likely to have taken time off work than other families (73.4% versus 40.8% in the RV+ group, $P<0.001$; 61.4% versus 22.9% in the RV-

TABLE 3
Health care utilization, work days lost and additional household gastroenteritis in patients with and without rotavirus infection*

	Rotavirus positive (n=186)	Rotavirus negative (n=150)	P†
Health care utilization‡			
Physician consultation only	121 (70.8)	107 (84.3)	0.010
ER visit, but not hospitalized	28 (16.4)	15 (11.8)	
Hospitalization	22 (12.9)	5 (3.9)	
Intravenous rehydration	25 (13.2)	4 (3.2)	
Work loss			
Families having taken time off work	100 (53.8)	56 (37.3)	0.003
Number of work days lost per family (mean ± SD)	1.5±2.2	0.9±1.7	0.003
Number of work days lost per family having taken time off work (mean ± SD)	2.8±2.3	2.3±2.0	0.194
Distribution (days)			
0.5–2	51 (51.0)	37 (66.1)	0.190
2.5–4	28 (28.0)	11 (19.6)	
>4	21 (21.0)	8 (14.3)	
Additional gastroenteritis in the household§¶			
Families reporting other gastroenteritis cases in the household	87 (46.8)	77 (51.3)	0.406
Other household members experiencing gastroenteritis	117/483 (24.2)	120/385 (31.2)	0.080
By age group (years)			
<2	11/25 (44.0)	10/21 (47.6)	0.809
2–5	26/71 (36.6)	19/48 (39.6)	0.745
6–18	5/41 (12.2)	8/34 (23.5)	0.236
>18	75/346 (21.7)	83/282 (29.4)	0.061

Data are n (%) of patients, unless otherwise indicated. *Percentages reflect only patients for whom the information was available; †Statistical significance of the observed differences was determined using the χ^2 test for distributions of categorical variables, the Student's t test for means of continuous variables and the log-rank test for durations; ‡n=171 for rotavirus-positive patients, and n=127 for rotavirus-negative patients; §The proportions of other household members experiencing gastroenteritis were compared using a logistic regression model with generalized estimating equations to account for the correlation between members of the same household; ¶Within two weeks before or after the index case's baseline physician visit. ER Emergency room

group, $P<0.001$). Work loss was also associated with the intensity of health care sought. Parents of RV+ children who visited an ER without being admitted missed an average of two days of work compared with three days for parents whose children were hospitalized.

Additional gastroenteritis cases in the household

In approximately 50% of families, at least one other household member experienced gastroenteritis in the four-week time window from two weeks before to two weeks after the baseline visit of the index case (Table 3). When the data were stratified according to the ages of household members, similar patterns were observed for households of RV+ and RV- children. The highest proportion of gastroenteritis was observed among

household members younger than two years of age, but this proportion remained high (greater than 12%) in all age groups, including adults.

DISCUSSION

The present study was a prospective cohort study that described some aspects of the burden of RV gastroenteritis episodes in Canada by quantifying the prevalence, duration and severity of gastroenteritis symptoms as well as the impact on health care utilization and parental work loss.

RV was detected in 55.4% of children with gastroenteritis. This is higher than the proportions previously observed in Canada in the same age group (26%) (43). The higher proportion of RV cases found in the present study may be due to yearly variations in RV incidence, differences in the RV study period or differences in the inclusion criteria. The study conducted by Ford-Jones et al (43) included the months of November and December, which were not covered in our study. RV gastroenteritis incidence is generally low during these two months, which partially explains why we observed a higher proportion of RV+ cases. In addition, our inclusion criteria required three or more watery or looser-than-normal stools in the previous 24 h, while that applied by Ford-Jones et al (43) allowed for a single watery stool during that same time frame. This may have led to the inclusion of less severe gastroenteritis cases, diluting the percentage of the more severe RV+ cases. Recently, an American study (21) with a similar time period of analysis and inclusion criteria reported more comparable RV+ rates between 31% and 50%.

The data in the literature (9,20,21,44) have shown that RV gastroenteritis generally occurs between six and 23 months of age. The age-specific distribution of RV gastroenteritis in our study is compatible with these results. The presence of diarrhea, vomiting, fever and dehydration in RV gastroenteritis has been well documented (9,21,24,43,45). In the present study, we observed that the majority of RV+ patients experienced all three of these symptoms and that, for almost one-quarter of the RV gastroenteritis cases, the three symptoms were persistent for at least four days. The presence of multiple gastroenteritis symptoms for an extended period of time is a risk factor for dehydration. For these patients who also have frequent vomiting, oral rehydration is difficult. This would explain the observation that 13.2% of RV+ patients required IV rehydration. In our study, more than one in four RV+ children visited the ER (26.9%) and one in eight (12.9%) were hospitalized. These results are comparable with a study conducted in the Greater Toronto Area (Ontario) (44), in which 24% of RV+ children seen by a doctor sought further care.

RV gastroenteritis is a common illness in young children and is generally more severe than other gastroenteritis episodes. Similar to the data recently reported by Coffin et al (21) in the United States, we also have observed that RV+ patients were more likely to have a combination of diarrhea, vomiting and fever when compared with RV- gastroenteritis cases. These results support that gastroenteritis caused by RV is more severe when compared with other causes.

The impact of RV gastroenteritis beyond direct health care costs has not received extensive attention. Our results show that RV gastroenteritis has an impact on majority of families by causing parental work loss. Similar results have been observed by Jacobs et al (48), who demonstrated that work loss increases with the level of health care sought. Interestingly, we observed

that work loss is frequent even in families for whom one parent is unemployed or on parental leave. In the present study, the parents of patients with RV gastroenteritis were more likely to miss days from work and had longer time off work than parents of patients with non-RV-related gastroenteritis. These results demonstrate that RV gastroenteritis has an impact that extends beyond direct health care.

The information collected about other gastroenteritis episodes in the household cannot establish whether RV transmission actually occurred between family members. Nonetheless, our results suggest that transmission of infection may represent an additional source of burden to the families. We reported additional gastroenteritis cases in 46.8% of households of RV+ children. These findings are in concordance with those reported by Ford-Jones et al (43).

Potential limitations of the present study include ascertainment bias that is present in any study using self-administered questionnaires for the description of clinical signs and symptoms. In the present study, however, recall bias, although not totally eliminated, is likely low given the short duration of time elapsed between the time of symptom onset and administration of the baseline questionnaire. During the two-week follow-up period of the study, care-givers were asked to report the presence of symptoms, including fever, on a daily basis. However, the accuracy of the reported presence of symptoms before the follow-up period and, in particular, fever, could not be ascertained. Second, the proportion of eligible children who were actually recruited was unknown. Therefore, the results of the present study could not be used to infer the incidence of RV gastroenteritis. Third, by recruiting gastroenteritis cases presenting to community medical practices, the present study adds to the knowledge and understanding from previous studies that were based on hospitalized cases, but it is likely that the cases enrolled in the present study were more severe than gastroenteritis patients treated at home who were not seeking medical care. Therefore, our results may not be representative of the overall pool of community-acquired RV gastroenteritis.

Our study has three main strengths. First, we followed a large sample of children presenting with gastroenteritis in various community medical practices. Second, we longitudinally assessed symptoms, work loss and health care resource utilization over the entire gastroenteritis episode. Previous studies (21,44) examining gastroenteritis in outpatient settings have reported RV-associated symptoms measured at one time point, usually at the time of health care use. In the present study, we describe gastroenteritis symptoms with seven days of retrospective information and two weeks of prospective data collected through symptom diary cards. Through prospective follow-up, we captured the reduction of symptoms over time, in addition to the peak symptom prevalence. Furthermore, prospective follow-up of patients enabled us to assess the duration of gastroenteritis episodes, examine the presence of simultaneous symptoms and capture symptoms that began after the baseline physician consultation. Third, we included children whose symptom onset began up to seven days before presentation at the physicians' offices. For 36.4% of our study sample, gastroenteritis symptoms began four to seven days before presentation, making our study population more representative of gastroenteritis cases seen in community medical practice compared with studies that used a more strict

inclusion time frame, such as the 72 h window used by Coffin et al (21).

Clinical trials have shown RV vaccines to be safe and effective at preventing RV gastroenteritis (13,16). Immunization of newborns against RV infections has the potential to prevent gastroenteritis episodes, which we have found to be clinically more severe and to have greater economic consequences for health care providers and families than other types of gastroenteritis.

ACKNOWLEDGEMENTS: The authors thank the study recruiters for their participation – Dr Darryl J Ableman, Dr Lauri Alto, Dr Geeta Achyuthan, Dr Stephen R Baker, Dr Rebecca Bodok-Nutzati, Dr Terence Brennan, Dr Walter Chang, Dr Walter Chow, Dr Mary Chu, Dr Jasmine Cohen, Dr Katy Driver, Dr Morency Duchastel, Dr Julius Erdstein, Dr Julie Fabbro, Dr Raphael Folman, Dr Yee Tsang Fung, Dr Lee Ann Gallant, Dr Marvin Gans, Dr Hartley Garfield, Dr Norman Goldberg, Dr Saul Greenberg, Dr Stephen Grodinsky, Dr Georges Haddad, Dr Diane Hawthorne, Dr Mabel Hsin, Dr Faeza Jhaveri, Dr Shawn Kao, Dr Alkarim Karmali, Dr Kai Kok Lai, Dr Christian Leduc, Dr Odile Kowalski, Dr Carla Krochak, Dr Louis Lo, Dr Peter

Manson, Dr Alison McCallum, Dr Janette Milne, Dr Patricia Morris, Dr Steven M Moss, Dr Rasik Morzaria, Dr Dokisom Nchama, Dr Ginette Normandin-Noël, Dr Santosh Paikatt, Dr Robert Poupert, Dr William Quan, Dr Jean Ross, Dr Celine Roy-Fleising, Dr Shagufta Shaikh, Dr B Takhar, Dr Quoc Tan Tran, Dr Stephen Treherne, Dr Andy Tsang, Dr Tommy Tung, Dr Vashti Tupper, Dr Pierre Urbanski, Dr Peter Wong, Dr Richard Wong, Dr Kwang Yang, Dr John Yaremko and Dr Michael Zajner.

POTENTIAL CONFLICTS OF INTEREST: JSS Medical Research (Canada) was hired by Merck Frosst Canada Ltd to conduct the present study and perform the data analysis. Dr John S Sampalis is an employee of JSS Medical Research, and Martin Sénécal and Dr James A Mansi are employees of Merck Frosst Canada Ltd. Dr Marc Brisson is an employee of Merck Frosst Canada Ltd during the analysis and write-up of the first draft of the paper. Dr Marc H Lebel and Dr John Yaremko were members of the Advisory Board on vaccines for Merck Frosst Canada Ltd. There are no potential conflicts of interest to report for Dr Richard Wong, Dr Lee Ann Gallant, Dr Hartley A Garfield, Dr Darryl J Ableman and Dr Richard L Ward.

REFERENCES

- Parashar UD, Hummelman EG, Bresee JS, Miller MA, Glass RI. Global illness and deaths caused by rotavirus disease in children. *Emerg Infect Dis* 2003;9:565-72.
- Clark B, McKendrick M. A review of viral gastroenteritis. *Curr Opin Infect Dis* 2004;17:461-9.
- Fruhwrth M, Heininger U, Ehrlken B, et al. International variation in disease burden of rotavirus gastroenteritis in children with community- and nosocomially acquired infection. *Pediatr Infect Dis J* 2001;20:784-91.
- Fruhwrth M, Karmaus W, Moll-Schuler I, Brosi S, Mutz I. A prospective evaluation of community acquired gastroenteritis in paediatric practices: Impact and disease burden of rotavirus infection. *Arch Dis Child* 2001;84:393-7.
- Leung AK, Kellner JD, Davies HD. Rotavirus gastroenteritis. *Adv Ther* 2005;22:476-87.
- Raebel MA, Ou BS. Rotavirus disease and its prevention in infants and children. *Pharmacotherapy* 1999;19:1279-95.
- Santos N, Hoshino Y. Global distribution of rotavirus serotypes/genotypes and its implication for the development and implementation of an effective rotavirus vaccine. *Rev Med Virol* 2005;15:29-56.
- Ford-Jones EL, Mindorff CM, Gold R, Petric M. The incidence of viral-associated diarrhea after admission to a pediatric hospital. *Am J Epidemiol* 1990;131:711-8.
- Staat MA, Azimi PH, Berke T, et al. Clinical presentations of rotavirus infection among hospitalized children. *Pediatr Infect Dis J* 2002;21:221-7.
- Clark H, Offit P. Vaccines for rotavirus gastroenteritis universally needed for infants. *Pediatr Ann* 2004;33:536-43.
- Franco MA, Angel J, Greenberg HB. Immunity and correlates of protection for rotavirus vaccines. *Vaccine* 2006;24:2718-31.
- Girard MP, Steele D, Chaignat CL, Kiény MP. A review of vaccine research and development: Human enteric infections. *Vaccine* 2006;24:2732-50.
- Ruiz-Palacios GM, Perez-Schael I, Velazquez FR, et al. Safety and efficacy of an attenuated vaccine against severe rotavirus gastroenteritis. *N Engl J Med* 2006;354:11-22.
- Van Damme P, Van der Wielen M, Ansaldi F, et al. Rotavirus vaccines: Considerations for successful implementation in Europe. *Lancet Infect Dis* 2006;6:805-12.
- Van Damme P, Giaquinto C, Maxwell M, Todd P, Van der Wielen M. Distribution of rotavirus genotypes in Europe, 2004-2005: The REVEAL Study. *J Infect Dis* 2007;195(Suppl 1):S17-25.
- Vesikari T, Matson DO, Dennehy P, et al. Safety and efficacy of a pentavalent human-bovine (WC3) reassortant rotavirus vaccine. *N Engl J Med* 2006;354:23-33.
- World Health Organization. State of the art of new vaccines research & development: Initiative for vaccine research. Geneva, Switzerland: World Health Organization, 2003.
- Bresee JS, Glass RI, Ivanoff B, Gentsch JR. Current status and future priorities for rotavirus vaccine development, evaluation and implementation in developing countries. *Vaccine* 1999;17:2207-22.
- Velazquez FR, Matson DO, Calva JJ, et al. Rotavirus infections in infants as protection against subsequent infections. *N Engl J Med* 1996;335:1022-8.
- Chang HG, Glass RI, Smith PF, Cicirello HG, Holman RC, Morse DL. Disease burden and risk factors for hospitalizations associated with rotavirus infection among children in New York State, 1989 through 2000. *Pediatr Infect Dis J* 2003;22:808-14.
- Coffin SE, Elser J, Marchant C, et al. Impact of acute rotavirus gastroenteritis on pediatric outpatient practices in the United States. *Pediatr Infect Dis J* 2006;25:584-9.
- Fischer TK, Viboud C, Parashar U, et al. Hospitalizations and deaths from diarrhea and rotavirus among children <5 years of age in the United States, 1993-2003. *J Infect Dis* 2007;195:1117-25.
- The Pediatric ROTavirus European CommitTEE (PROTECT). The paediatric burden of rotavirus disease in Europe. *Epidemiol Infect* 2006;134:908-16.
- Cascio A, Vizzi E, Alaimo C, Arista S. Rotavirus gastroenteritis in Italian children: Can severity of symptoms be related to the infecting virus? *Clin Infect Dis* 2001;32:1126-32.
- Fischer TK. Incidence of hospitalizations due to rotavirus gastroenteritis in Denmark. *Acta Paediatr* 2001;90:1073-5.
- Giaquinto C, Van Damme P, Huet F, et al. Clinical consequences of rotavirus acute gastroenteritis in Europe, 2004-2005: The REVEAL study. *J Infect Dis* 2007;195(Suppl 1):S26-35.
- Giaquinto C, Van Damme P, Huet F, Gofhefors L, Van der Wielen M. Costs of community-acquired pediatric rotavirus gastroenteritis in 7 European countries: The REVEAL Study. *J Infect Dis* 2007;195(Suppl 1):S36-44.
- Gil A, Carrasco P, Jimenez R, San-Martin M, Oyaguez I, Gonzalez A. Burden of hospitalizations attributable to rotavirus infection in children in Spain, period 1999-2000. *Vaccine* 2004;22:2221-5.
- Gleizes O, Desselberger U, Tatochenko V, et al. Nosocomial rotavirus infection in European countries: A review of the epidemiology, severity and economic burden of hospital-acquired rotavirus disease. *Pediatr Infect Dis J* 2006;25:S12-21.
- Soriano-Gabarro M, Mrukowicz J, Vesikari T, Verstraeten T. Burden of rotavirus disease in European Union countries. *Pediatr Infect Dis J* 2006;25:S7-11.
- Lynch M, O'Halloran F, Whyte D, Fanning S, Cryan B, Glass RI. Rotavirus in Ireland: National estimates of disease burden, 1997 to 1998. *Pediatr Infect Dis J* 2001;20:693-8.

32. Matson DO. On a multinational assessment of rotavirus disease in Europe. *J Infect Dis* 2007;195(Suppl 1):S1-3.
 33. Chen KT, Chen PY, Tang RB, et al. Sentinel hospital surveillance for rotavirus diarrhea in Taiwan, 2001-2003. *J Infect Dis* 2005;192(Suppl 1):S44-8.
 34. Fischer TK, Anh DD, Antil L, et al. Health care costs of diarrheal disease and estimates of the cost-effectiveness of rotavirus vaccination in Vietnam. *J Infect Dis* 2005;192:1720-6.
 35. Hsu VP, Abdul Rahman HB, Wong SL, et al. Estimates of the burden of rotavirus disease in Malaysia. *J Infect Dis* 2005;192(Suppl 1):S80-6.
 36. Jiraphongsa C, Bresee JS, Pongsuwanna Y, et al. Epidemiology and burden of rotavirus diarrhea in Thailand: Results of sentinel surveillance. *J Infect Dis* 2005;192(Suppl 1):S87-93.
 37. Nakagomi T, Nakagomi O, Takahashi Y, Enoki M, Suzuki T, Kilgore PE. Incidence and burden of rotavirus gastroenteritis in Japan, as estimated from a prospective sentinel hospital study. *J Infect Dis* 2005;192(Suppl 1):S106-10.
 38. Nelson EA, Tam JS, Bresee JS, et al. Estimates of rotavirus disease burden in Hong Kong: Hospital-based surveillance. *J Infect Dis* 2005;192(Suppl 1):S71-9.
 39. Nelson EA, Tam JS, Yu LM, et al. Hospital-based study of the economic burden associated with rotavirus diarrhea in Hong Kong. *J Infect Dis* 2005;192(Suppl 1):S64-70.
 40. Nguyen VM, Nguyen VT, Huynh PL, et al. The epidemiology and disease burden of rotavirus in Vietnam: Sentinel surveillance at 6 hospitals. *J Infect Dis* 2001;183:1707-12.
 41. Van Man N, Luan IT, Trach DD, et al. Epidemiological profile and burden of rotavirus diarrhea in Vietnam: 5 years of sentinel hospital surveillance, 1998-2003. *J Infect Dis* 2005;192(Suppl 1):S127-32.
 42. Wang XY, Xu ZY, Von Seidlein L, et al. Incidence of diarrhea caused by rotavirus infections in rural Zhengding, China: Prospective, population-based surveillance. *J Infect Dis* 2005;192(Suppl 1):S100-5.
 43. Ford-Jones EL, Wang E, Petric M, Corey P, Moineddin R, Fearon M. Hospitalization for community-acquired, rotavirus-associated diarrhea: A prospective, longitudinal, population-based study during the seasonal outbreak. The Greater Toronto Area/Peel Region PRESI Study Group. *Pediatric Rotavirus Epidemiology Study for Immunization. Arch Pediatr Adolesc Med* 2000;154:578-85.
 44. Ford-Jones EL, Wang E, Petric M, Corey P, Moineddin R, Fearon M. Rotavirus-associated diarrhea in outpatient settings and child care centers. The Greater Toronto Area/Peel Region PRESI Study Group. *Pediatric Rotavirus Epidemiology Study for Immunization. Arch Pediatr Adolesc Med* 2000;154:586-93.
 45. Rivest P, Proulx M, Lonergan G, Lebel MH, Bedard L. Hospitalizations for gastroenteritis: The role of rotavirus. *Vaccine* 2004;22:2013-7.
 46. Ward RL, Bernstein DI, Young EC, Sherwood JR, Knowlton DR, Schiff GM. Human rotavirus studies in volunteers – determination of infectious dose and serological response to infection. *J Infect Dis* 1986;154:871-80.
 47. Gilchrist MJ, Bretl TS, Moultney K, Knowlton DR, Ward RL. Comparison of seven kits for detection of rotavirus in fecal specimens with a sensitive, specific enzyme immunoassay. *Diagn Microbiol Infect Dis* 1987;8:221-8.
 48. Jacobs P, Shane LG, Fassbender K, Wang EL, Moineddin R, Ford-Jones EL. Economic analysis of rotavirus-associated diarrhea in the metropolitan Toronto and Peel regions of Ontario. *Can J Infect Dis* 2002;13:167-74.
-