



Published in final edited form as:

Nature. 2008 December 18; 456(7224): 933–937. doi:10.1038/nature07594.

Highly efficient molybdenum-based catalysts for enantioselective alkene metathesis

Steven J. Malcolmson^{1,*}, Simon J. Meek^{1,*}, Elizabeth S. Sattely¹, Richard R. Schrock², and Amir H. Hoveyda¹

¹ Department of Chemistry, Merkert Chemistry Center, Boston College, Chestnut Hill, Massachusetts 02467, USA

² Department of Chemistry, Massachusetts Institute of Technology, Cambridge, Massachusetts 02139, USA

Abstract

Discovery of efficient catalysts is one of the most compelling objectives of modern chemistry. Chiral catalysts are in particularly high demand, as they facilitate synthesis of enantiomerically enriched small molecules that are critical to developments in medicine, biology and materials science¹. Especially noteworthy are catalysts that promote—with otherwise inaccessible efficiency and selectivity levels—reactions demonstrated to be of great utility in chemical synthesis. Here we report a class of chiral catalysts that initiate alkene metathesis¹ with very high efficiency and enantioselectivity. Such attributes arise from structural fluxionality of the chiral catalysts and the central role that enhanced electronic factors have in the catalytic cycle. The new catalysts have a stereogenic metal centre and carry only monodentate ligands; the molybdenum-based complexes are prepared stereoselectively by a ligand exchange process involving an enantiomerically pure aryloxide, a class of ligands scarcely used in enantioselective catalysis^{2,3}. We demonstrate the application of the new catalysts in an enantioselective synthesis of the *Aspidosperma* alkaloid, quebrachamine, through an alkene metathesis reaction that cannot be promoted by any of the previously reported chiral catalysts.

A chiral catalyst may promote a transformation with exceptionally high degrees of efficiency and enantioselectivity if the modes with which it associates with substrate molecules are sterically—as well as electronically—distinct^{4,5}. Design of a chiral metal-based catalyst, where stereoelectronic interactions affect the energetics of the catalytic cycle, can lead to consideration of complexes that bear a stereogenic metal centre; stereoselective preparation and preservation of the stereochemical identity of the catalyst then become crucial issues. In the limited number of chiral stereogenic-at-metal catalysts prepared, stereoselective synthesis is addressed through multidentate ligands^{6–8}. As stereogenic-at-metal complexes can undergo stereo-mutation⁹, polydentate ligation ensures minimal erosion of stereochemical integrity. The rigidity of bi- or polydentate ligation may be detrimental, however, if catalyst structural fluxionality gives rise to enhanced activity and/or enantioselectivity. Chiral complexes that

Correspondence and requests for materials should be addressed to A.H.H. (amir.hoveyda@bc.edu).

*These authors contributed equally to this work.

Author Contributions S. J. Malcolmson and S. J. Meek were involved in the discovery and development of the new catalysts. E.S.S. designed and developed the synthesis route to racemic quebrachamine. A.H.H. and R.R.S. designed and directed the research program. A.H.H. wrote the manuscript.

Author Information X-ray crystallographic data have been deposited at the Cambridge Crystallographic Data Centre, UK; CCDC 703841 contains the supplementary crystallographic data for this paper. These data can be obtained free of charge from The Cambridge Crystallographic Data Centre (www.ccdc.cam.ac.uk/data_request/cif). Reprints and permissions information is available at www.nature.com/reprints.

bear a stereogenic metal centre and only monodentate ligands, therefore, offer attractive opportunities in enantioselective catalysis^{10,11}. Such options are, nonetheless, almost entirely unexplored; it is particularly challenging to design and synthesize enantiomerically pure stereogenic-at-metal catalysts that are devoid of polydentate ligands, do not readily stereomutate and can thus serve as effective chiral catalysts.

The growing list of alkene metathesis transformations that cannot be promoted by the existing metal complexes has underlined the need for more effective classes of catalysts^{1,12,13}. One instance that points to such limitations is a key step in an enantioselective synthesis¹⁴ of the adrenergic blocker quebrachamine¹⁵ (Fig. 1): the conversion of achiral **1** to the strained chiral tetracycle **2** by reaction of sterically hindered alkenes. The results illustrated in Fig. 1, regarding molybdenum alkylidene **3** (refs 12, 16) and ruthenium carbene **4a** (ref. 17), although being somewhat inefficient, represent the optimal among available achiral catalysts. The faster initiating **4b** (ref. 18) proceeds only to 48% conversion, most likely as a result of lower stability of the carbene intermediates. In relation to an enantioselective quebrachamine synthesis, the existing chiral catalysts, represented by **5–7** (ref. 12), are entirely ineffective in promoting the formation of **2** ($\leq 5\%$ conversion with up to 50 mol% loading after up to 48 h at 22–80 °C). With 16 mol% **8** (ref. 19) at 80 °C, there is approximately 50% conversion, but only *rac*-**2** is generated; related monodentate *N*-heterocyclic chiral ruthenium carbenes²⁰ are equally ineffective.

As the first step towards identifying a new set of chiral catalysts, we considered reasons for the higher activity of alkylidene **3** in comparison with **5–7**, a variance that exists despite the similar electron-withdrawing ability of the oxygen-based ligands. We surmised that such differences may originate from the structural rigidity of the diolates and the resulting higher energy transition states and intermediates in the catalytic cycle. The O–Mo–O angle in tetrahedral **5a** ($\angle(\text{O–Mo–O})$, $\sim 127^\circ$ (ref. 21)), compared to that in a related square pyramidal tungstacyclobutane ($\angle(\text{O–W–O})$, $\sim 99^\circ$ (ref. 22)), supports the hypothesis that structural adjustments within the catalytic cycle may be better accommodated in a less rigid metal complex.

The above considerations imply that a chiral molybdenum catalyst, bearing monodentate ligands—either two that are chiral (identical enantiomers, non-stereogenic-at-Mo; see Fig. 2) or one achiral and one chiral ligand (stereogenic-at-Mo)—would be more active. Recent theoretical studies suggest that high-oxidation-state complexes containing two electronically distinct ligands should be particularly effective promoters of alkene metathesis^{4,5} (Fig. 2). According to theoretical explorations, an acceptor ligand (**A** in **I**; Fig. 2) ensures sufficient metal Lewis acidity, necessary for effective binding of the Lewis basic alkene. Efficient alkene coordination, however, requires the presence of a sterically accessible ligation site, made available through alteration of the structure of the initial tetrahedral complex **I** (Fig. 2). It has been proposed that the donor group (**D**) causes **I** to distort dissymmetrically; ligand **D** preferentially interacts with the most available metal orbital such that a trigonal prismatic complex bearing an open ligation site is rendered energetically more accessible. The donor ligand thus occupies an apical site in **II** (the alkylidene, acceptor and imido ligands constitute the basal plane of the trigonal prism), coordinated opposite only to a weakly bound alkene (*trans* effect). The resulting complex, **III**, leads to trigonal bipyramidal **IV**, which undergoes facile cycloreversion (Fig. 2) in which the metallacyclobutane carbons, constituting the alkene being released, are positioned *trans* to **D**, affording **V**. The aforementioned electronic effects thus facilitate formation of complex **V** as well. Such a scenario suggests acceleration at two critical stages of the catalytic cycle: substrate–catalyst association and metal-lacyclobutane decomposition. The above hypothesis finds support in the efficient reaction shown in Fig. 2: 1 mol% *rac*-**9** (ref. 23) promotes formation of *rac*-**2** within 1 h. Such a level of activity is in stark contrast to **3** (Fig. 1), a complex with two hexafluoro-*t*-butoxides.

Stereoselective synthesis of stereogenic-at-Mo complexes became our next objective. One approach would involve diastereoselective mono-protonation of bis-pyrrolides **10a** and **10b** (Fig. 3)²⁴ with 1 equiv. of a chiral enantiomerically pure alcohol. Preliminary experiments (T. Pilyugina, A.H.H. and R.R.S., unpublished work), involving chiral diols (for example **5–7**, Fig. 1), indicated that pyrrole molecules, released upon alcohol exchange, are not deleterious to catalyst activity. These observations suggested that mono-aryloxides might be prepared and used *in situ*. To this end, we favoured binaphthol-derived alcohols, because this class of ligand possesses several important attributes: (1) ease and low cost of synthesis, (2) facility of modification and (3) appropriate electron-withdrawing ability.

We subjected bis-pyrrolides **10a** and **10b** to mono-protected diols derived from binaphthol. Treatment of **10a** with 1 equiv. of enantiomerically pure **11** affords **12a** in 19:1 d.r.; with **10b**, **12b** is generated as a 7:1 mixture. Under identical conditions, **13a** and **13b** are obtained with similar selectivity. The identity of the major diastereomer of **13b** was established by X-ray crystallography (Supplementary Information page SI18); assignment of other isomers in Fig. 3 is by inference. The configurational stability of the above complexes is indicated by the absence of detectable variations in the diastereomeric ratios; for example, even after one month, a toluene solution of **13b** remains a 7:1 mixture of the same diastereomers.

Attempts to prepare the mono-aryloxides with the parent ligand lacking the bromides led to a mixture containing bis-aryloxides as well as the unreacted bis-pyrrolides. Synthesis of such complexes can be accomplished with 1 equiv. of the related octahydrobinaphthol, but the process is less stereoselective (d.r., 1–2.5:1) and, unlike the bromides, excess alcohol causes bis-aryloxide formation. In reactions to form **13a** and **13b**, bis-aryloxides are not detected even under relatively forcing conditions (60 °C, 2 h). The bromine atoms are therefore required for efficient and stereoselective formation of **12** and **13** (minimal non-stereogenic-at-Mo bis-aryloxide). Delineation of principles that govern stereoselective ligand exchange reactions is a topic of ongoing investigations.

We then turned our attention to probing the ability of mono-aryloxides to perform as catalysts for enantioselective ring-closing metathesis (RCM). The transformation in Table 1 (**14** → **15**) served as the model process; reactions were performed with complexes prepared and used *in situ*. With 1 mol% **12a** (d.r., 19:1; entry 1, Table 1), RCM proceeds to 50% conversion, affording (*R*)-**15** in 18% e.e. With **12b** (d.r., 7:1; entry 2, Table 1), complete conversion is achieved and (*S*)-**15** is obtained in 50% e.e. The above trend is again observed in reactions involving **13a** and **13b** (entries 3 and 4, Table 1), but with a wider selectivity gap: with 1 mol % **13a**, RCM proceeds to 54% conversion to afford (*R*)-**15** in 13% e.e., whereas in the presence of **13b** there is >98% conversion and (*S*)-**15** is isolated in 93% e.e. With **13b**, the RCM can be performed in a fume hood at 22 °C with 1 mol% loading (30 min, 96% conversion, 86% yield, 92% e.e.). These results illustrate the significant potential of the new catalysts in practical procedures for enantioselective synthesis. Despite providing slightly lower selectivity, **13b** is more effective than the corresponding optimal molybdenum diolate (5 mol% **5a**: 20 min, 95% conversion, 98% e.e. (ref. 25)).

The reduced reactivity and selectivity in reactions of complexes that are more stereochemically pure (that is, **12a** and **13a**) raises the question of whether the minor diastereomers are more active. To investigate this, a stereochemically pure sample of **13b** (d.r., >25:1) was used to initiate enantioselective RCM of **14** (1 mol%, 22 °C, 30 min): (*S*)-**15** was isolated in 93% e.e. and 94% yield, results identical to those obtained with the 7:1 mixture (entry 4, Table 1). Moreover, by monitoring the reaction progress spectroscopically (400-MHz ¹H NMR) in the presence of **13b**, generated *in situ*, we established that >98% of the major isomer is consumed, presumably through initiation with the alkene substrate, whereas the minor diastereomer remains largely intact (>95%). Related experiments indicate that in the case of binaphtholate

12b, both isomers are initiated with nearly equal facility, a finding that might explain why the product is obtained with lower selectivity with this complex.

A variety of enantioselective RCM reactions illustrate the special utility of the new catalysts (Table 2). None of the previously reported diolates promotes RCM of secondary allylamine **16** (entry 1, Table 2)²⁶; by sharp contrast, with 2.5 mol% **13b**, there is 94% conversion to piperidine **17** within 1 h, furnishing the desired product in 89% yield and 67% e.e. Diolate **7** (see Fig. 1) and **13c** (see Fig. 4 for structure; d.r., 5:1) promote formation of **19** (entry 2, Table 2) with high enantioselectivity (98% and 91% e.e., respectively), but RCM with the mono-aryloxide is significantly more efficient: 3 mol% dichloro-substituted **13c** furnishes 95% conversion to **19** within 1 h, whereas 48 h are required with 10 mol% diolate **7**. Reaction of amine **20** (entry 3, Table 2), which requires 15 mol% **5b**, proceeds to only 75% conversion after 24 h, yielding **21** with low selectivity (e.r., 65:35). By contrast, 1 mol% **13b** is sufficient for >98% conversion within 1 h, affording **21** in >98% yield and 92% e.e. Similarly, enantioselective synthesis of azepine **23** (entry 4, Table 2) is more efficient (1 h versus 20 h) and substantially more selective (81% e.e. versus 40% e.e.) when **13c** is used (versus diolate **5b**). RCM of arylamine **24** (entry 5, Table 2) proceeds with high enantioselectivity when diolate **5a** (ref. 25) or mono-aryloxide **13c** is used; with 1 mol% **13c**, however, there is >98% conversion in 1 h (versus 7 h with 2 mol% **5a**). With enantioselective RCM of silyl ether **26** (entry 6, Table 2), diolate **5c** initiates a slightly more selective ring closure (97:3 e.r. versus 94:6 e.r. with **13c**); with 1 mol% **13c**, conversion of **26** to **27** is complete in 1 h (versus 5 mol % and 12 h with **5c**)²⁷. Three points regarding the transformations in Table 2 merit mention. First, in certain cases, dichloro complex **13c** affords similar, but higher, selectivity in comparison with dibromo complex **13b**. Second, the molybdenum centre undergoes two inversions in the course of each catalytic cycle (Fig. 2). The high enantioselectivities observed might suggest that adventitious isomerization occurs at a minimum or not at all, as such isomerizations would furnish the alternative product enantiomers. Third, chiral ruthenium-based alkene metathesis catalysts developed so far only promote enantioselective RCM of trisubstituted alkenes with high selectivity ($\geq 80\%$ e.e. or $\geq 90:10$ e.r.)^{20,28,29}.

The most notable demonstration of the attributes of molybdenum mono-aryloxides is in the context of enantioselective synthesis of quebrachamine (Fig. 1). In the presence of 1 mol% **13c**, generated *in situ*, triene **1** is transformed entirely in 1 h to **2** in 84% yield and 96% e.e. (Fig. 4). The target alkaloid is subsequently obtained in high enantiomeric purity and yield (97%). The molybdenum-catalysed process in Fig. 4 thus constitutes the application of a highly effective catalytic enantioselective RCM (e.r., $\geq 95:5$) to the total synthesis of a relatively complex natural product^{1,12}.

The chiral complexes discovered in this study are examples of configurationally stable, enantiomerically pure, diastereomerically enriched, stereogenic-at-metal catalysts that bear only monodentate ligands. We have demonstrated that constitutionally fluxional stereogenic-at-metal complexes that effectively exploit stereoelectronic factors should be considered as viable and attractive options in future catalyst design.

METHODS SUMMARY

The general procedure for *in situ* catalyst preparation and catalytic enantioselective alkene metathesis is as follows. An oven-dried (135 °C) 25-mL round-bottom flask, equipped with a magnetic stir bar, is charged with Mo bis-pyrrolide (0.01 equiv.) under N₂ atmosphere (dry box). The flask is sealed with a septum, taped, and brought to a fume hood, in which all manipulations are performed. An 8-mL vial is charged with the alcohol (0.01 equiv.), which is subsequently dried by azeotropic distillation with C₆H₆. Toluene (0.02 M) is added to the alcohol and the resulting solution immediately transferred by syringe to the Mo bis-pyrrolide

(flask pressurized on addition; that is, no outlet needle). The mixture is allowed to stir for the appropriate period of time at 22 °C. A 20-mL vial is charged with substrate (1 equiv.), which is dried by azeotropic distillation with C₆H₆. Toluene (final substrate concentration, 0.2 M) is added and the solution immediately transferred by syringe to the 25-mL flask (flask pressurized on addition); the mixture is allowed to stir for the required period of time. The reaction is quenched by addition of wet diethyl ether and concentrated *in vacuo* (percent conversion determined by 400-MHz ¹H NMR analysis). Purification is performed by silica gel chromatography and enantiomeric purity of the product determined by gas or high-performance liquid chromatography analysis in comparison with authentic racemic material.

Supplementary Material

Refer to Web version on PubMed Central for supplementary material.

Acknowledgements

This research was supported by the US National Institutes of Health, Institute of General Medical Sciences (grant GM-59426 to A.H.H. and R.R.S.). We are grateful to B. C. Bailey and K. Wampler for assistance in obtaining the X-ray structure of the major diastereomer of molybdenum complex **13b**. We thank A. R. Zhugralin for numerous discussions regarding the mechanistic aspects of these investigations and R. Singh for experimental suggestions. Mass spectrometry facilities at Boston College are supported by the US National Science Foundation (grant DBI-0619576).

References

1. Hoveyda AH, Zhugralin AR. The remarkable metal-catalysed olefin metathesis reaction. *Nature* 2007;450:243–251. [PubMed: 17994091]
2. Hashimoto S, Komeshima N, Koga K. Asymmetric Diels–Alder reaction catalysed by chiral alkoxyaluminum dichloride. *J Chem Soc Chem Commun* 1979:437–438.
3. Tayama E, Saito A, Ooi T, Maruoka K. Activation of ether functionality of allyl vinyl ethers by chiral bis(organoaluminum) Lewis acids: application to asymmetric Claisen rearrangement. *Tetrahedron* 2002;58:8307–8312.
4. Solans-Monfort X, Clot E, Copéret C, Eisenstein O. d^O-Re-based olefin metathesis catalysts, Re(=CR)(=CHR)(X)(Y): the key role of X and Y ligands for efficient active sites. *J Am Chem Soc* 2005;127:14015–14025. [PubMed: 16201824]
5. Poater A, Solans-Monfort X, Clot E, Copéret C, Eisenstein O. Understanding d^O-olefin metathesis catalysts: Which metal, which ligands? *J Am Chem Soc* 2007;129:8207–8216. [PubMed: 17559212]
6. Brunner H, Prommesberger M. Asymmetric catalysis. Part 127: Enantioselective desymmetrization of 2-*n*-butyl-4,7-dihydro-1,3-dioxepin with (η⁶-arene)ruthenium(II) half-sandwich complexes. *Tetrahedr Asymm* 1999;9:3231–3239.
7. Faller JW, Grimmond BJ, D'Alliessi DG. An application of electronic asymmetry to highly enantioselective catalytic Diels–Alder reactions. *J Am Chem Soc* 2001;123:2525–2529. [PubMed: 11456920]
8. Noyori R. Asymmetric catalysis: science and opportunities (Nobel lecture). *Angew Chem Int Ed* 2002;41:2008–2022.
9. Fontecave M, Hamelin O, Ménage S. Chiral-at-metal complexes as asymmetric catalysts. *Top Organomet Chem* 2005;15:271–278.
10. Brunner H. Optically active organometallic compounds of transition elements with chiral metal atoms. *Angew Chem Int Ed* 1999;38:1194–1208.
11. Brunner H, Fisch K. Catalytic hydrosilylation or hydrogenation at one coordination site of [Cp'Fe(CO)(X)] fragments. *Angew Chem Int Ed* 1990;29:1131–1132.
12. Schrock RR, Hoveyda AH. Molybdenum and tungsten imido alkylidene complexes as efficient olefin-metathesis catalysts. *Angew Chem Int Ed* 2003;42:4592–4633.
13. Grubbs, RH. *Handbook of Metathesis*. Wiley-VCH; 2003.

14. Kozmin SA, Iwama T, Huang Y, Rawal VH. An efficient approach to *Aspidosperma* alkaloids via [4+2] cycloadditions of aminosiloxydienes: Stereocontrolled total syntheses of (\pm)-tabersonine. Gram-scale catalytic asymmetric syntheses of (+)-tabersonine and (+)-16-methoxytabersonine Asymmetric syntheses of (+)-aspidospermidine and (-)-quebrachamine. *J Am Chem Soc* 2002;124:4628–4641. [PubMed: 11971711]
15. Deutsch HF, Evenson MA, Drescher P, Sparwasser C, Madsen P. Isolation and biological activity of aspidospermine and quebrachamine from an *Aspidosperma* tree source. *J Pharm Biomed Anal* 1994;12:1283–1287. [PubMed: 7841224]
16. Schrock RR, et al. Synthesis of molybdenum imido alkylidene complexes and some reactions involving acyclic olefins. *J Am Chem Soc* 1990;112:3875–3886.
17. Garber SB, Kingsbury JS, Gray BL, Hoveyda AH. Efficient and recyclable monomeric and dendritic Ru-based metathesis catalysts. *J Am Chem Soc* 2000;122:8168–8179.
18. Stewart IC, Douglas CJ, Grubbs RH. Increased efficiency in cross-metathesis reactions of sterically hindered olefins. *Org Lett* 2008;10:441–444. [PubMed: 18177048]
19. Van Veldhuizen JJ, Campbell JE, Giudici RE, Hoveyda AH. A readily available chiral Ag-based N-heterocyclic carbene complex for use in efficient and highly enantioselective Ru-catalyzed olefin metathesis and Cu-catalyzed allylic alkylation reactions. *J Am Chem Soc* 2005;127:6877–6882. [PubMed: 15869311]
20. Funk TW, Berlin JM, Grubbs RH. Highly active chiral ruthenium catalysts for asymmetric ring-closing olefin metathesis. *J Am Chem Soc* 2006;128:1840–1846. [PubMed: 16464082]
21. Alexander JB, La DS, Cefalo DR, Hoveyda AH, Schrock RR. Catalytic enantioselective ring-closing metathesis by a chiral biphen-Mo complex. *J Am Chem Soc* 1998;120:4041–4042.
22. Tsang WCP, et al. Alkylidene and metalacyclic complexes of tungsten that contain a chiral biphenoxide ligand. Synthesis, asymmetric ring-closing metathesis, and mechanistic investigations. *J Am Chem Soc* 2003;125:2652–2666. [PubMed: 12603153]
23. Singh R, Schrock RR, Müller P, Hoveyda AH. Synthesis of monoalkoxide monopyrrolyl complexes of the type Mo(NR)(CHR')(OR'')(pyrrolyl). Enyne metathesis with high oxidation state catalysts. *J Am Chem Soc* 2007;129:12654–12655. [PubMed: 17902675]
24. Hock AS, Schrock RR, Hoveyda AH. Dipyrrolyl precursors to bisalkoxide molybdenum olefin metathesis catalysts. *J Am Chem Soc* 2006;128:16373–16375. [PubMed: 17165793]
25. Dolman SJ, Sattely ES, Hoveyda AH, Schrock RR. Efficient catalytic enantioselective synthesis of unsaturated amines: preparation of small- and medium-ring cyclic amines through Mo-catalyzed asymmetric ring-closing metathesis in the absence of solvent. *J Am Chem Soc* 2002;124:6991–6997. [PubMed: 12059222]
26. Sattely ES, Cortez GA, Moebius DC, Schrock RR, Hoveyda AH. Enantioselective synthesis of cyclic amides and amines through Mo-catalyzed asymmetric ring-closing metathesis. *J Am Chem Soc* 2005;127:8526–8533. [PubMed: 15941288]
27. Kiely AF, Jernelius JA, Schrock RR, Hoveyda AH. Enantioselective synthesis of medium-ring heterocycles, tertiary ethers, and tertiary alcohols by Mo-catalyzed ring-closing metathesis. *J Am Chem Soc* 2002;124:2868–2869. [PubMed: 11902866]
28. Van Veldhuizen JJ, Gillingham DG, Garber SB, Kataoka O, Hoveyda AH. Chiral Ru-based complexes for asymmetric olefin metathesis: Enhancement of catalyst activity through steric and electronic modifications. *J Am Chem Soc* 2003;125:12502–12508. [PubMed: 14531694]
29. Fournier PA, Collins SK. A highly active chiral ruthenium-based catalyst for enantioselective olefin metathesis. *Organometallics* 2007;26:2945–2949.

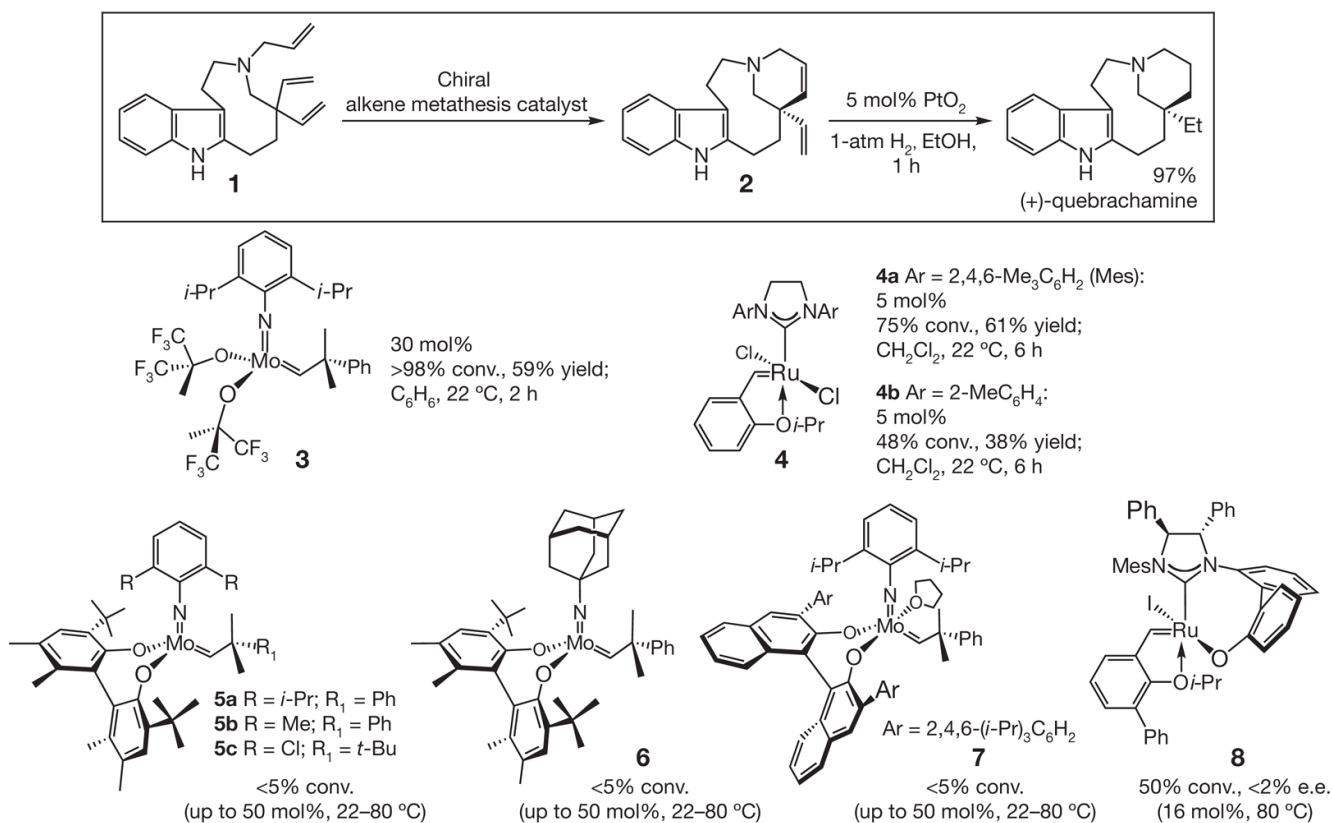


Figure 1. Catalytic ring-closing metathesis of triene

1. This alkene metathesis reaction, required for total synthesis of alkaloid natural product quebrachamine, is not efficiently promoted by the available achiral or chiral molybdenum or ruthenium catalysts, indicating that significantly more effective catalysts are needed. Me, CH₃; Et, C₂H₅; Ph, C₆H₅; *i*-Pr, (CH₃)₂CH; and *t*-Bu, (CH₃)₃C. e.e., enantiomeric excess.

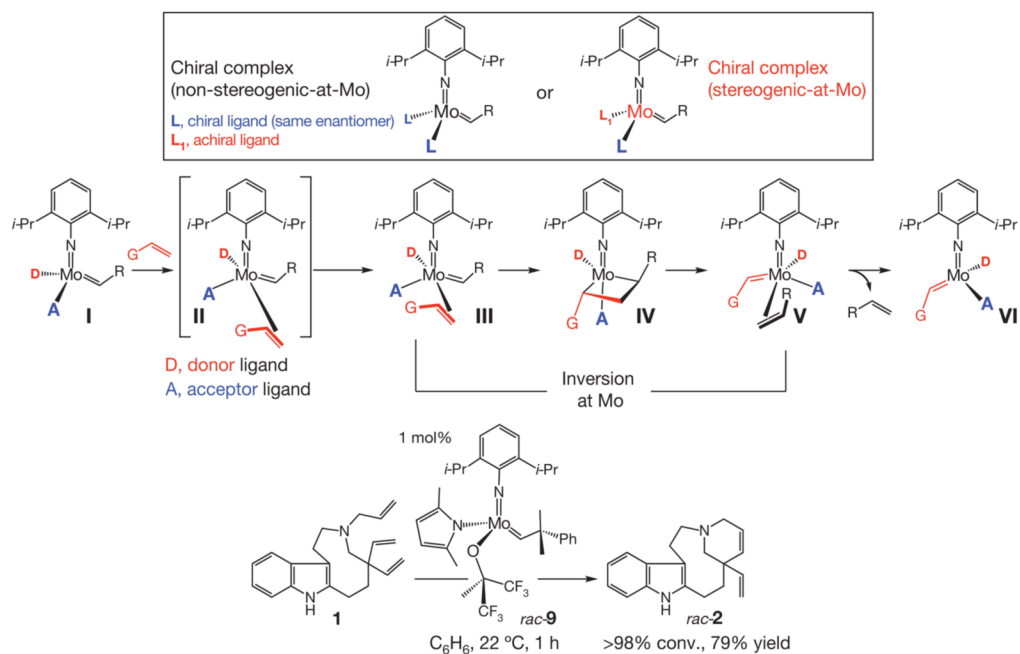


Figure 2. Stereoelectronic effects have a critical role in alkene metathesis reactions promoted by a molybdenum complex that bears a donor and an acceptor ligand

Such a chiral complex distorts dissymmetrically, leading to an open ligation site *trans* to **D** (see **II**), thus facilitating catalyst–substrate association; the donor ligand also causes a more facile decomposition of the metallacyclobutane intermediate (**IV**). These attributes are expected to lead to a catalyst that is substantially more effective than one that bears two electronically identical acceptor ligands (see the molybdenum complexes illustrated in Fig. 1). The high activity of a complex bearing a donor (pyrrolide) and an acceptor (aryloxy) ligand is illustrated by the efficient conversion of triene **1** to diene **2** (compare with the reaction of molybdenum-based bis-alkoxide **3** shown in Fig. 1). G, functional group.

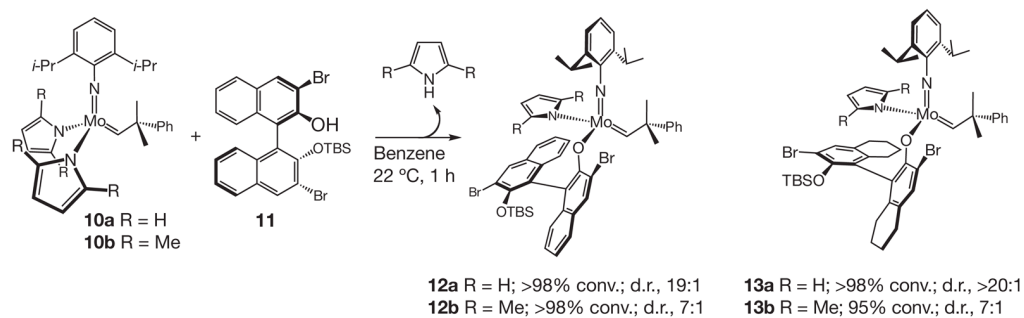


Figure 3. Diastereoselective synthesis of stereogenic-at-Mo complexes

Such processes are achieved by efficient and stereoselective ligand exchange reactions involving enantiomerically pure aryl alcohols, derived from commercially available binaphthol, and achiral molybdenum-based bis-pyrrolides. TBS, *t*-butyldimethylsilyl; d.r., diastereomeric ratio.

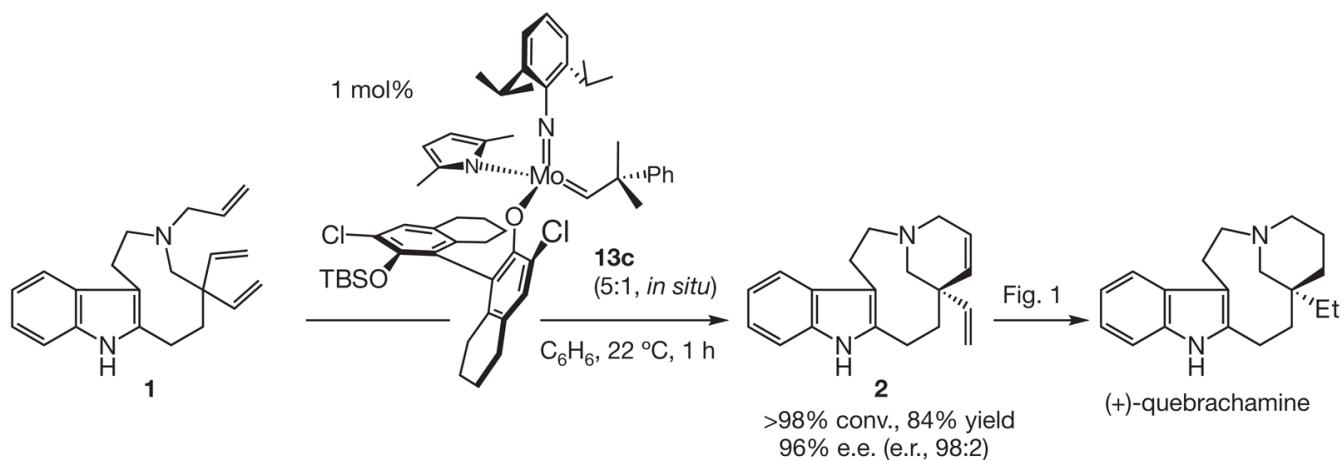
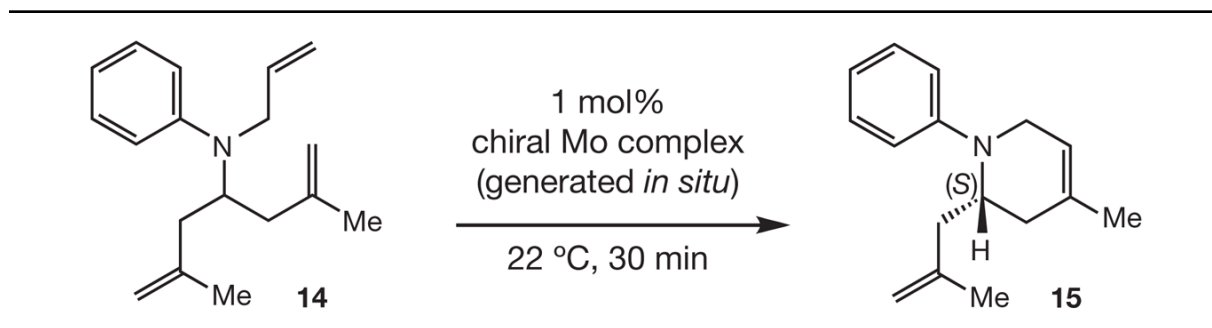


Figure 4. Efficient and highly enantioselective synthesis of (+)-quebrachamine

The new chiral molybdenum aryloxides, represented by **13c**, promote the ring-closing metathesis of **1** to afford **2** with unprecedented efficiency (see Fig. 1 for comparison with previously known catalysts). Moreover, the molybdenum-catalysed ring-closing metathesis of **1**, a process that cannot be promoted by any of the available chiral molybdenum or ruthenium catalysts, proceeds with exceptionally high enantioselectivity (e.r., 98:2) in the presence of **13c**. Palladium-catalysed hydrogenation of **2** affords the alkaloid natural product quebrachamine in high enantiomeric purity.

Table 1

Initial examination of the chiral complexes as catalysts for enantioselective RCM



Entry no.	Chiral complex	Conv. (%) [*] ; Yield (%) [†]	e.r. [‡]	e.e. (%) [§] ; Config. ^{//}
1	12a	50; ND	41:59	18; (<i>R</i>)
2	12b	>98; 91	75:25	50; (<i>S</i>)
3	13a	54; ND	43.5:56.5	13; (<i>R</i>)
4	13b	>98; 91	96.5:3.5	93; (<i>S</i>)

The reactions were carried out in purified benzene or toluene under an atmosphere of nitrogen gas (see the Supplementary Information for details). ND, not determined.

^{*} Conversion measured by analysis of 400-MHz ¹H NMR spectra of unpurified mixtures.

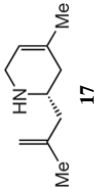
[†] Yield of isolated product after purification (see the Supplementary Information for details).

[‡] The enantiomeric ratio (e.r.) was determined by gas liquid chromatography analysis. See the Supplementary Information for details as well as for proof of product absolute configuration.

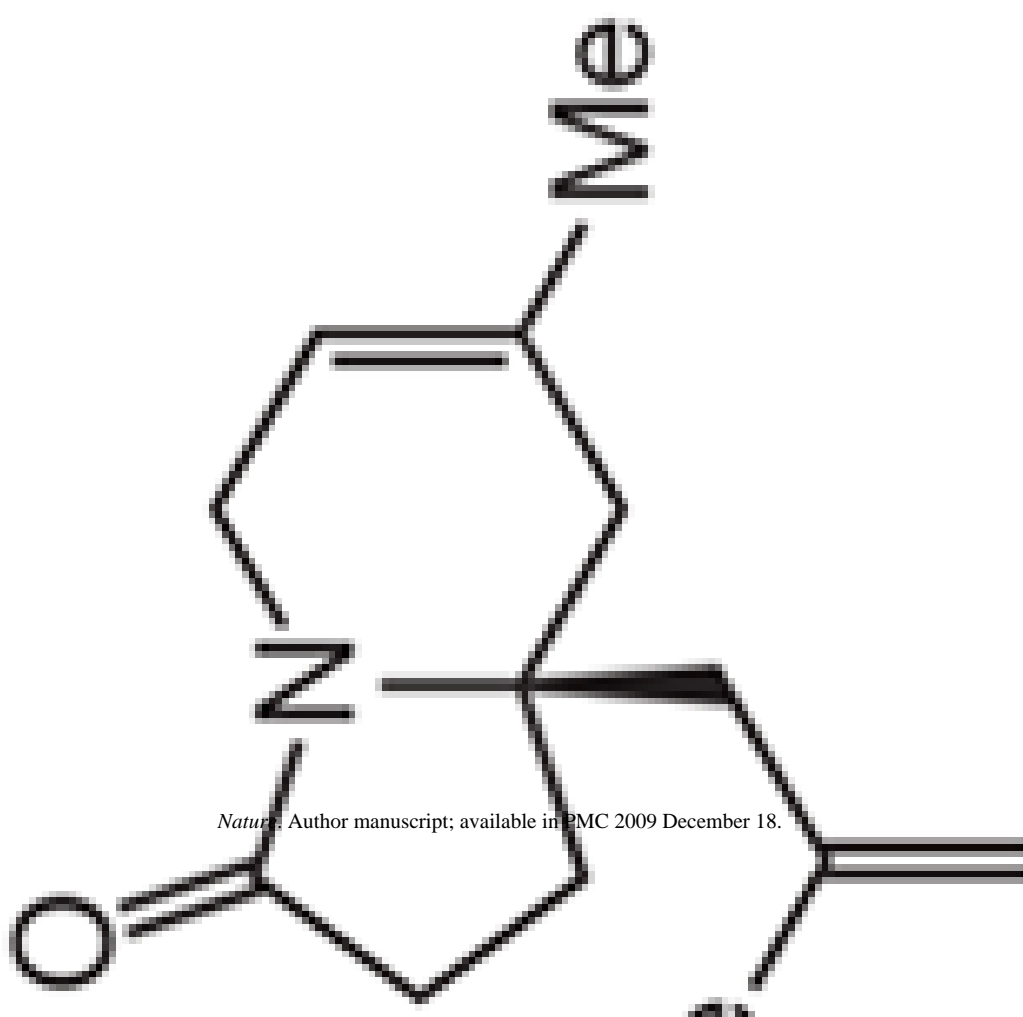
[§] The e.e. was calculated from the e.r.; the variances of e.e. values are estimated to be between - 2% and +2%.

^{//} Configuration of the major enantiomer.

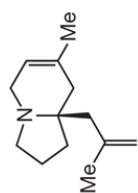
Table 2 promoted by chiral molybdenum diolates and chiral aryloxide-pyrrolide complexes

Product	Mo diolate; mol%	Time (h); Temp. (°C)	Conv. (%) [†] ; Yield (%) [‡]	e.r. (%) [§] ; e.e. (%) [§]	Mo aryloxide; mol%	Time (h); Temp. (°C)	Conv. (%) [†] ; Yield (%) [‡]	e.r. (%) [§] ; e.e. (%) [§]
 17	All available	>36; >40	<5; —	—	13b; 2.5	1; 22	94; 89	83.5; 16.5; 67

Product	Mo diolate; mol%	Time (h); Temp. (°C)	Conv. (%) [‡] ; Yield (%) [‡]	e.r. (%) [§] ; e.e. (%) [§]	Mo aryloxyde; mol%*	Time (h); Temp. (°C)	Conv. (%) [‡] ; Yield (%) [‡]	e.r. (%) [§] ; e.e. (%) [§]
	7; 10	48; 22	>95; 91	99:1; 98	13c; 3	1; 22	95; 88	95.5:4.5; 91



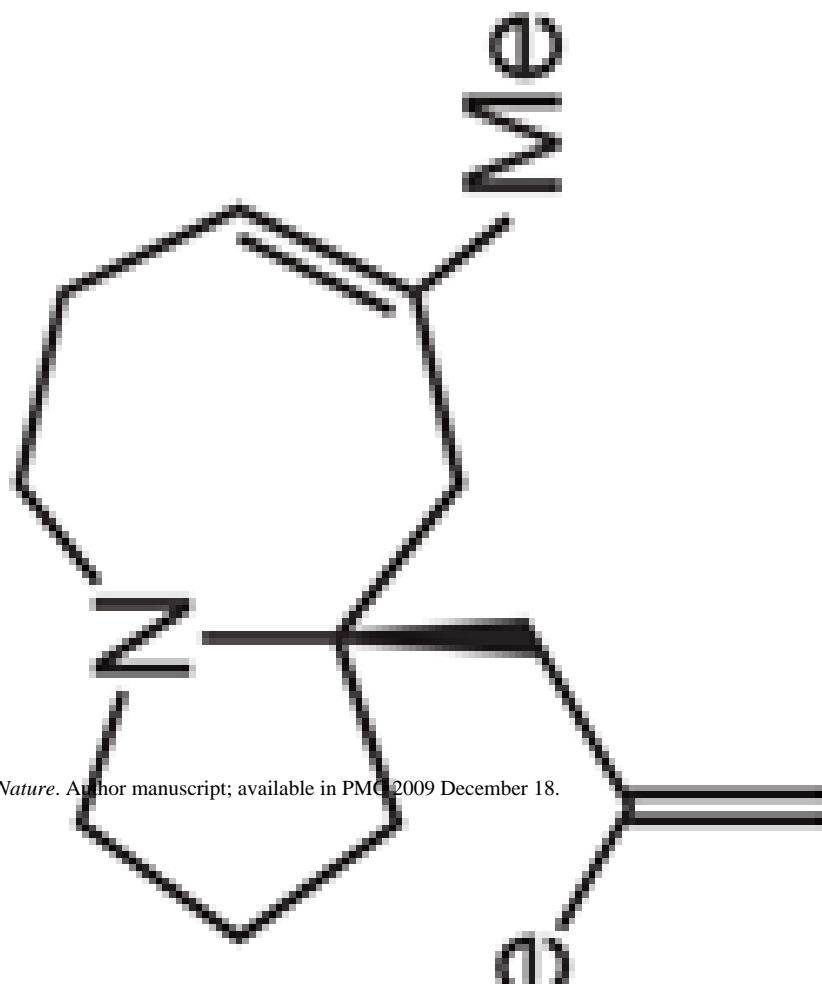
Product	Mo diolate; mol%	Time (h); Temp. (°C)	Conv. (%) [†] ; Yield (%) [‡]	e.r. (%) [§] ; e.e. (%) [§]	Mo aryloxyde; mol%*	Time (h); Temp. (°C)	Conv. (%) [†] ; Yield (%) [‡]	e.r. (%) [§] ; e.e. (%) [§]
---------	---------------------	-------------------------	--	--	------------------------	-------------------------	--	--

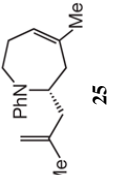


5b; 15	24; 22	75; ND	65:35; 30	13b; 1	1; 22	>98; >98	96:4; 92
--------	--------	--------	-----------	--------	-------	----------	----------

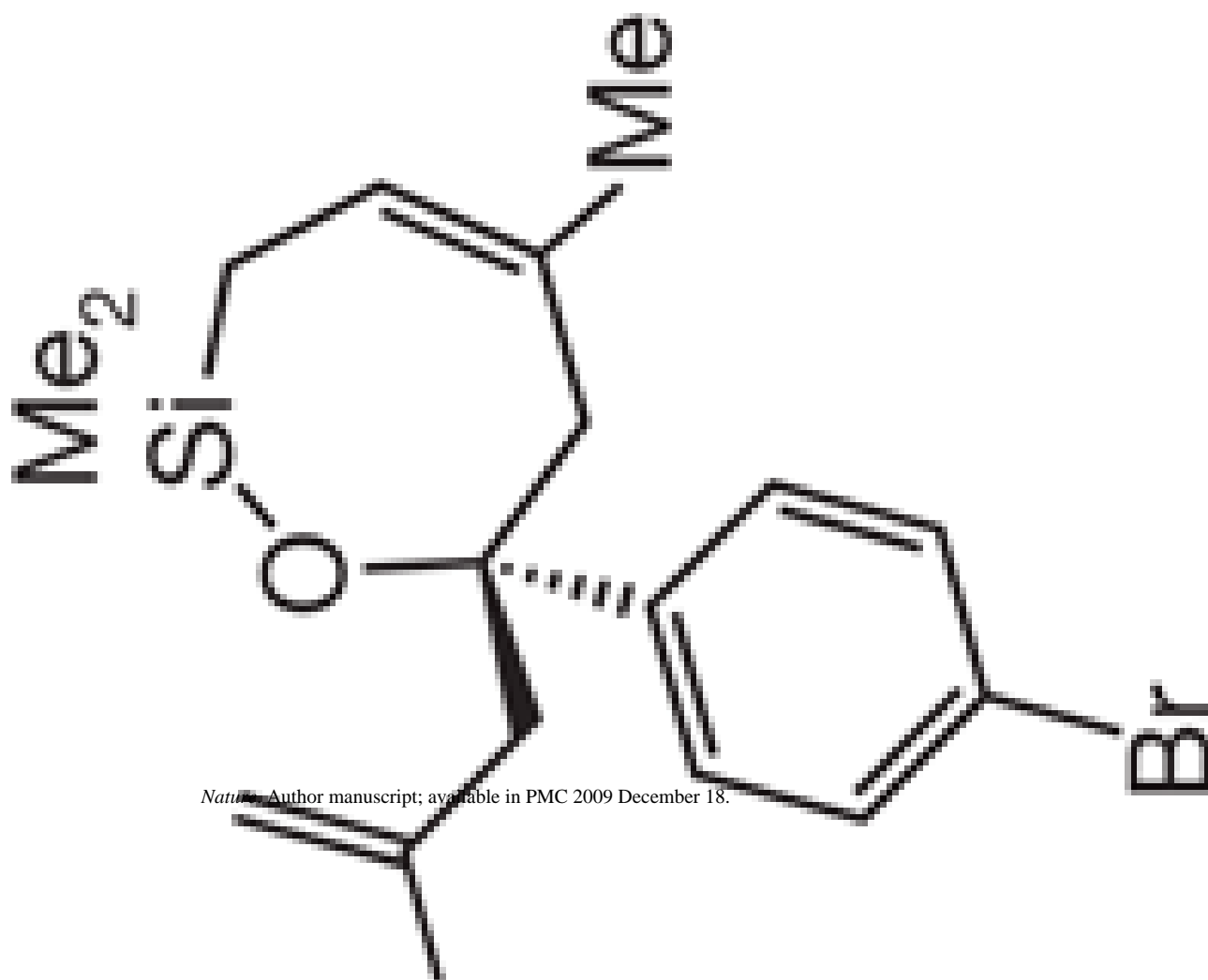
Nature. Author manuscript; available in PMC 2009 December 18.

5b; 5	20; 22	>98; ND	70:30; 40	13c; 3	1; 22	95; 86	90.5:9.5; 81
-------	--------	---------	-----------	--------	-------	--------	--------------



Product	Mo diolate; mol%	Time (h); Temp. (°C)	Conv. (%) [‡] ; Yield (%) [‡]	e.r. (%) [§] ; e.e. (%) [§]	Mo aryloxyde; mol% [*]	Time (h); Temp. (°C)	Conv. (%) [‡] ; Yield (%) [‡]	e.r. (%) [§] ; e.e. (%) [§]
 25	5a; 2	7; 22	>98; 90	97.5; 2.5; 95	13c; 1	1; 22	>98; 86	96.5; 3.5; 93

Product	Mo diolate; mol%	Time (h); Temp. (°C)	Conv. (%) [†] ; Yield (%) [‡]	e.r. (%) [§] ; e.e. (%) [§]	Mo aryloxyde; mol% [*]	Time (h); Temp. (°C)	Conv. (%) [†] ; Yield (%) [‡]	e.r. (%) [§] ; e.e. (%) [§]
	5c, 5	12; 22	>98; 98	97:3; 94	13c, 1	1; 22	>98; 84	94:6; 88



Product	Mo diolate; mol%	Time (h); Temp. (°C)	Conv. (%) [†] ; Yield (%) [‡]	e.r. (%) [§] ; e.e. (%) [§]	Mo aryloxyde; mol% [*]	Time (h); Temp. (°C)	Conv. (%) [†] ; Yield (%) [‡]	e.r. (%) [§] ; e.e. (%) [§]
---------	---------------------	-------------------------	--	--	------------------------------------	-------------------------	--	--

under an atmosphere of nitrogen gas (see the Supplementary Information for details); the reaction in entry 3 was performed in pentane.

es.

tails).

lysis. See the Supplementary Information for details as well as for proof of product absolute configuration. The e.e. was calculated from the e.r.; the variances of e.e. values are estimated