



## Identification and expression analysis of *OsHsfs* in rice<sup>\*</sup>

Chuang WANG<sup>§</sup>, Qian ZHANG<sup>§</sup>, Hui-xia SHOU<sup>†‡</sup>

(State Key Laboratory of Plant Physiology and Biochemistry, College of Life Science, Zhejiang University, Hangzhou 310058, China)

<sup>†</sup>E-mail: huixia@zju.edu.cn

Received June 12, 2008; Revision accepted Dec. 1, 2008; Crosschecked Mar. 10, 2009

**Abstract:** Heat stress transcription factors (Hsfs) are the central regulators of defense response to heat stress. We identified a total of 25 rice *Hsf* genes by genome-wide analysis of rice (*Oryza sativa* L.) genome, including the subspecies of *O. japonica* and *O. indica*. Proteins encoded by *OsHsfs* were divided into three classes according to their structures. Digital Northern analysis showed that *OsHsfs* were expressed constitutively. The expressions of these *OsHsfs* in response to heat stress and oxidative stress differed among the members of the gene family. Promoter analysis identified a number of stress-related *cis*-elements in the promoter regions of these *OsHsfs*. No significant correlation, however, was found between the heat-shock responses of genes and their *cis*-elements. Overall, our results provide a foundation for future research of *OsHsfs* function.

**Key words:** Heat shock, Transcription factors, Rice, Protein structure, Expression analysis

**doi:**10.1631/jzus.B0820190

**Document code:** A

**CLC number:** Q75

### INTRODUCTION

Heat stress transcription factors (Hsfs) are the central regulators of defense response. They control the expression of heat shock proteins (HSPs) in plants by specific binding to the highly conserved heat shock element (HSE) characterized by palindromic motifs of nGAAn (Miller and Mittler, 2006). The basic structure and promoter recognition of *Hsfs* are highly conserved throughout the eukaryotic kingdom (von Koskull-Döring *et al.*, 2007). A typical Hsf protein contains a modular structure with an N-terminal DNA-binding domain (DBD), an adjacent bipartite oligomerization domain composed of heptads repeat of hydrophobic amino acid residues (HR-A/B), a nuclear localization signal (NLS) essential for nuclear uptake of the protein, a nuclear export signal (NES), and in many cases a less conserved C-terminal activation domain (CTAD) rich in aromatic, hydrophobic and acidic amino acids (AHA) that have been reported to be crucial for activation function (Nover *et*

*al.*, 2001). Based on the conservative DBD and the HR-A/B regions, 21 putative *Hsfs* from the *Arabidopsis*, 23 from rice, and 18 from tomato have been identified through the genome-wide analysis (Baniwal *et al.*, 2004). Plant *Hsf* gene family is divided into three classes, *HsfA*, *HsfB*, and *HsfC*, according to their protein structures (Nover *et al.*, 2001). *HsfA* and *HsfC* have insertions of 21 and 7 amino acids, between the hydrophobic regions HR-A and HR-B, respectively. *HsfB* and *HsfC* are also characterized by lack of AHA motifs in their C-terminal regions (CTRs).

Evidence from several important representatives in tomato and *Arabidopsis* displayed that plant *Hsfs* diversify in their biological functions (Kotak *et al.*, 2007b; von Koskull-Döring *et al.*, 2007). *HsfA* members are capable of transcriptional activation, while *HsfB* members act as repressors or as co-activators (e.g., *HsfB1*) of *HsfA* members (Bharti *et al.*, 2004; Czarnecka-Verner *et al.*, 2004). However, *AtHsfA4* activity was reported to be repressed by *AtHsf5*, which belongs to class A *Hsfs* (Baniwal *et al.*, 2007). Overexpression of *Hsf* genes in transgenic plants resulted in an up-regulation of heat stress-associated genes and an enhancement of

<sup>‡</sup> Corresponding author

<sup>§</sup> The two authors contributed equally to this work

<sup>\*</sup> Project (No. 30471118) supported by the National Natural Science Foundation of China

thermotolerance, whereas the down-regulation of *Hsf* genes leads to a reduction in the thermotolerance (Charng *et al.*, 2007; Mishra *et al.*, 2002; Schramm *et al.*, 2008). In addition to control of heat stress response, *Hsfs* have also been reported to be involved in the defense response to pathogen attack, oxidative stress, heavy metals, dehydration and salinity, and in certain processes of development and differentiation (Larkindale *et al.*, 2005; von Koskull-Döring *et al.*, 2007).

Rice is the most important cereal crop, which feeds more than a half of the world's population (Jeon *et al.*, 2008). Molecular dissection of rice *Hsf* gene family would help to unravel the stress response mechanism in rice. Compared with the extensive studies done in *Arabidopsis Hsf* genes, only a few researches have involved monocots, such as rice and maize (Fu *et al.*, 2006; Yamanouchi *et al.*, 2002; Yokotani *et al.*, 2008). Although 23 *Hsfs* were identified in the *Oryza japonica* previously, the structure and expression profile of these *OsHsfs* have not been elucidated. In this study, we identified and classified 25 rice *Hsf* genes from both *O. japonica* and *O. indica* genomes. In addition, the expression of the individual genes was investigated through both digital expression analysis and semi-quantitative reverse-transcript polymerase chain reaction (RT-PCR). Our work will facilitate the function analysis of the *OsHsfs* genes.

## MATERIALS AND METHODS

### Search for *Hsf* genes in rice genome and gene annotation

Consensus amino acid sequences of *Arabidopsis* heat shock factors, including the DNA-binding domain and HR-A/B region, were used to search the GenBank (National Center for Biotechnology Information (NCBI), Bethesda, MD, USA; <http://www.ncbi.nlm.nih.gov>), the International Rice Genome Sequencing Project (IRGSP; <http://rgp.dna.affrc.go.jp>), and Beijing Genomics Institute (BGI; <http://btn.genomics.org.cn/rice>), using an *E*-value cutoff of 1.0. The full length of cDNA sequence, 1 kb DNA sequence upstream of the start-codon, and bacterial artificial chromosomes (BACs) or phage artificial chromosomes (PACs) containing *OsHsf* genes were obtained from the NCBI, IRGSP, or BGI. Expressed sequence tag (EST) sequences of all *OsHsf*

genes collected from dbEST database (<http://www.ncbi.nlm.nih.gov/dbEST/>) were used for the identification of the tissue specific expression patterns of the *OsHsfs* (Audic and Claverie, 1997). Finally, we compared all the *OsHsf* genes to identify redundant sequences. Promoters were analyzed by using PlantCARE (<http://bioinformatics.psb.ugent.be/webtools/plantcare/html/>).

### Sequence alignment and phylogenetic analysis

Amino acid sequences of DBD and HR-A/B regions were used for multiple alignments by using ClustalX version 1.83 (Hicks *et al.*, 1997). To produce preferable alignments, the parameters were set as followings: for pairwise parameters, gap opening cost=30, gap extension cost=0.3; for multiple parameters, gap opening cost=20, gap extension cost=0.15; the Gonnet series were applied for protein weight matrices and defaulting parameters were used for other settings. Phylogenetic tree of *OsHsf* gene family was constructed using the N-J method. The *ScHsf1* gene from *Saccharomyces cerevisiae* was selected as outgroup and bootstrap analysis was performed to measure the robustness of all nodes.

### Digital expression analysis

Digital expression of the *OsHsfs* was performed using the rice dbEST database. All ESTs were sorted by the library source, and normalized libraries were delimited for expression analysis. Frequencies of the ESTs in the corresponding library were calculated to represent the gene expression level.

### RT-PCR analysis

Sixty rice seedlings (*Oryza sativa* L. cv. Nipponbare) were grown hydroponically with a 12-h photoperiod (250  $\mu\text{mol photons}/(\text{m}^2\cdot\text{s})$ ) and a day/night temperature of 28/22 °C. The 7-d-old seedlings were transferred to a growth chamber at 37 °C for heat shock treatment or immersed in 20 mmol/L  $\text{H}_2\text{O}_2$  solution for  $\text{H}_2\text{O}_2$  stress induction. The shoots of the seedlings were sampled at different time points (0, 1, 6, and 24 h after treatments) for isolating RNA. Total RNA was extracted with Trizol reagent (Gibco-BRL, Gaithersburg, MD, USA) according to the manufacturer's instructions. cDNA was synthesized from 5  $\mu\text{g}$  of the total RNA using moloney murine leukemia virus (M-MLV) reverse transcriptase (Promega, Madison, WI, USA). Rice *ACTIN* gene

*OsACT1* (accession No. X63830) was served as a housekeeping gene control. Gene specific primers for corresponding *OsHsf* genes were designed for semi-quantitative RT-PCR analysis (Table A1).

## RESULTS

### Identification of *OsHsf* genes in rice genome

In order to identify rice *Hsf* genes, we used the conserved DBD and the HR-A/B regions to conduct basic local alignment search tool (BLAST) searches against the rice genome in NCBI, IRGSP, and GPI, and identified a total of 26 homologs in the *O. japonica* genome, which were highly similar to HSF proteins from other plants, and 27 in the *O. indica*. Of

these *Hsf* genes, two gene loci *Loc\_Os06g66210* (*O. japonica*) and *OsIBCD008764* (*O. indica*) were manually discarded because of the truncation in DBD region and the absence of corresponding ESTs in the dbEST, respectively. Another two *Hsf* genes from gene loci *OsIBCD028792* and *OsIBCD044667*, which were previously annotated as two distinct genes, were proved to be identical in their cDNA sequences (Table 1). The remaining 50 sequences were analyzed for redundancy by performing pairwise comparisons of the genomic sequences in the coding regions ranging from start to the stop codon in each cultivar. Genes that share more than 95% similarity are considered as the same gene. It was found that all *Hsf* genes in *O. indica* have corresponding orthologs in *O. japonica*.

**Table 1 Characteristic of the 25 *OsHsf* genes**

Genes	Gene loci		BAC/PAC clone	Protein accession No.	Accession No. of cDNA	Total EST	ORF (aa)	Intron (bp)
	<i>O. japonica</i>	<i>O. indica</i>						
<i>OsHsfA1</i>	Os03g63750	OsIBCD012688	AC120506 AP008209	NP_001051938	AK100430 AK106118	50	506	1386
<i>OsHsfA2a</i>	Os03g53340	OsIBCD011954	AC092558 AP008209	AAP13005	AK069579 AK109590	15	376	81
<i>OsHsfA2b</i>	Os07g08140	OsIBCD022526	AP003826	NP_001059028	AK101824	10	372	1323
<i>OsHsfA2c</i>	Os10g28340	OsIBCD030592	AC027658 AP008216	NP_001064617	AK072391	10	358	1669
<i>OsHsfA2d</i>	Os03g06630	OsIBCD008955	AC105729 AP008209	NP_001049047	AK066844	6	359	946
<i>OsHsfA2e</i>	Os03g58160	OsIBCD012247	AC092076 AP008209	NP_001051552	AK068660	50	357	1199
<i>OsHsfA3</i>	Os02g32590	OsIBCD006671	AP004777	NP_001047003	AK101934	7	498	1298
<i>OsHsfA4a</i>	Os01g54550	OsIBCD003303	AP003076	NP_001044247	AK109856	21	440	582
<i>OsHsfA4d</i>	Os05g45410	OsIBCD018681	AC111015 AP008211	NP_001056127	AK100412	35	459	237
<i>OsHsfA5</i>	Os02g29340	OsIBCD006509	AP004999 AP008208	NP_001046889	AK072210 AK065643	16	475	1475
<i>OsHsfA6</i>	Os06g36930	OsIBCD021096	AP005456	NP_001057889	—	—	331	122
<i>OsHsfA7</i>	Os01g39020	OsIBCD002361	AP003308	NP_001043378	AK064271	7	402	1406
<i>OsHsfA9</i>	Os03g12370	OsIBCD009329	AC107226 AP008209	NP_001049429	AK072571	24	406	1231
<i>OsHsfB1</i>	Os09g28354	OsIBCD028792 <sup>a</sup> OsIBCD044667 <sup>a</sup>	AP006057 AP008215	NP_001063364	AK101182 AK061433	36	302	5880
<i>OsHsfB2a</i>	Os04g48030	OsIBCD015287	AL663003	NP_001053591	AY344483	4	305	102
<i>OsHsfB2b</i>	Os08g43334	OsIBCD027305	AP004163	NP_001062423	AK101700	29	390	101
<i>OsHsfB2c</i>	Os09g35790	OsIBCD029172	AP005681	NP_001063726	AK106545 AK106525 AK105409	19	454	121
<i>OsHsfB4a</i>	Os08g36700	OsIBCD026821	AP004693	BAD09860	—	—	380	93
<i>OsHsfB4b</i>	Os07g44690	OsIBCD024341	AP005292 AP008213	NP_001060424	AK063952 AK099354	26	310	1665
<i>OsHsfB4c</i>	Os09g28200	OsIBCD028788	AP005655	NP_001063356	AK241190	5	394	88
<i>OsHsfB4d</i>	Os03g25120	OsIBCD010276 <sup>b</sup> OsIBCD010275 <sup>b</sup>	AC125784 AP008209	ABF96133	—	1	305	1450
<i>OsHsfC1a</i>	Os01g43590	—	AP002744	AAQ23067	AK069479	1	348	109
<i>OsHsfC1b</i>	Os01g53220	OsIBCD003218	AP003309	NP_001044160	AK066316	9	250	79
<i>OsHsfC2a</i>	Os02g13800	OsIBCD005620	AP004070	NP_001046370	AK106488	9	298	86
<i>OsHsfC2b</i>	Os06g35960	OsIBCD021036	AP003682	NP_001057843	—	1	278	1128

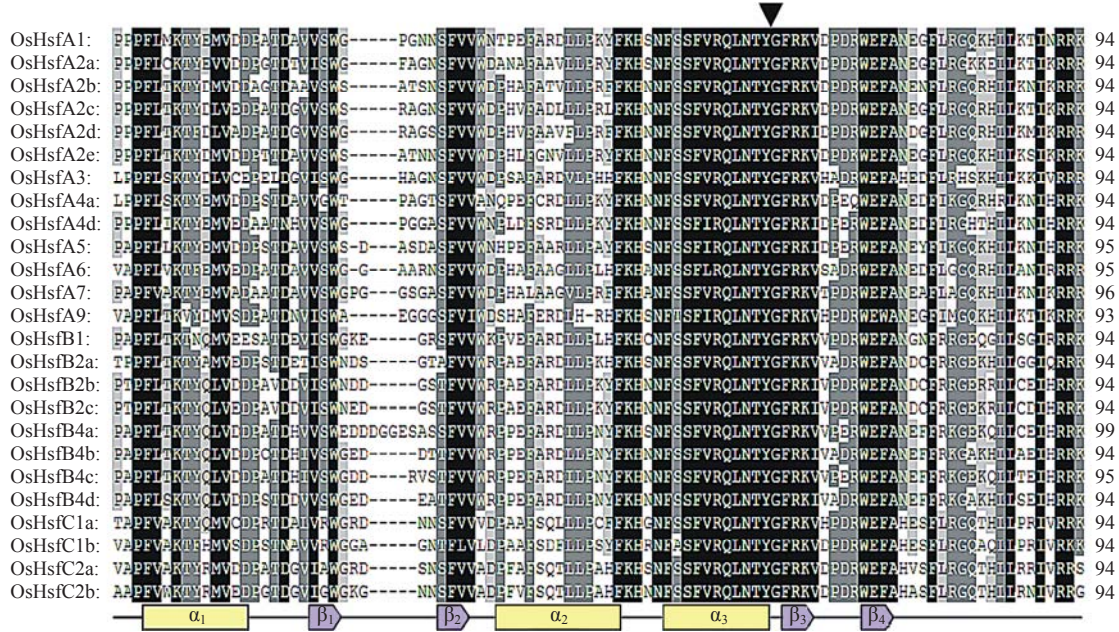
BAC: bacterial artificial chromosome; PAC: phage artificial chromosome; EST: expressed sequence tag; ORF: open reading frame. <sup>a</sup>Same genes with two cDNAs separated by intron; <sup>b</sup>Two *OsHsfB4d* gene loci annotated in *O. indica* genome



**Protein structure and classification of OsHsfs**

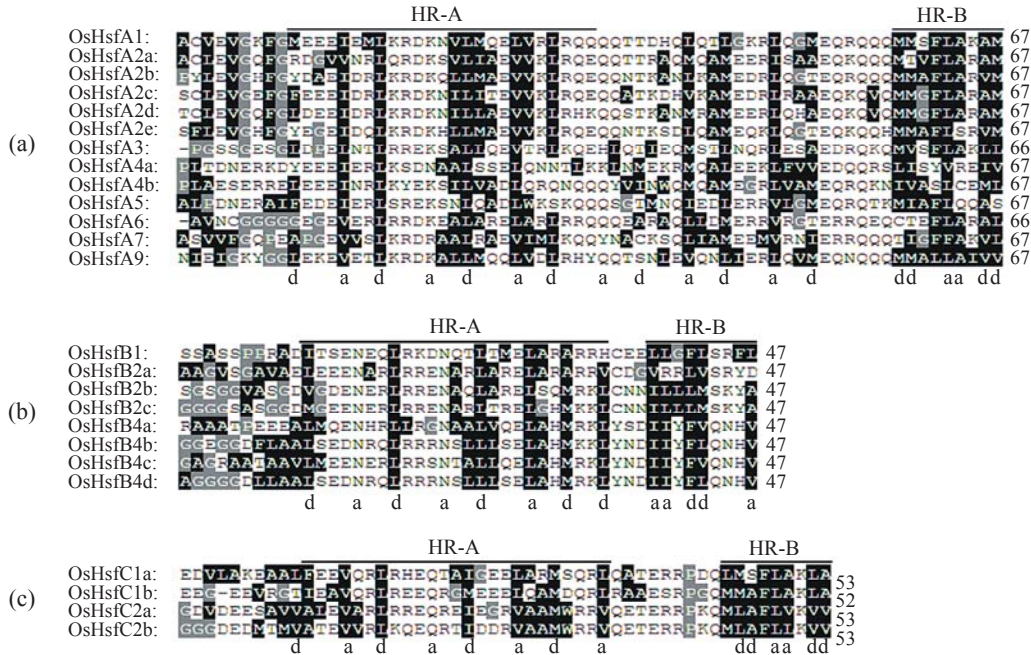
Protein sequence analysis detected a conserved DBD in the N-terminal region (Fig. 1) and an adjacent HR-A/B region in each of the OsHsf proteins (Fig. 2). The DBD domain contained three  $\alpha$ -helix bundles and

a small four-stranded antiparallel  $\beta$ -sheet as previously described in LpHsf24 (Fig. 1) (Schultheiss *et al.*, 1996). There was a conserved intron located near the 3'-end of the third helix (Fig. 1) with variant length (Table 1) in all the genes.



**Fig.1 Multiple sequence alignment of DNA binding domains**

All OsHsfs have only one intron between the invariant tyrosine residue and glycine residue, which is indicated by arrow. The secondary structure elements are showed below the sequence alignment:  $\alpha_1$  to  $\alpha_3$ ,  $\alpha$ -helix;  $\beta_1$  to  $\beta_4$ ,  $\beta$ -sheet



**Fig.2 Multiple sequence alignment of HR-A/B domains**

Based on the distance between HR-A and HR-B domains, OsHsfs are grouped into three classes: (a) OsHsfA, (b) OsHsfB, and (c) OsHsfC. The hydrophobic residues and unique amino acids (glycine and proline) are colored black and gray respectively. The positions a and d of heptapeptide repeats are marked below

Further analyses of the HR-A/B domain revealed that there were, in the majority of cases, three or more repeated heptads in the HR-A domain and two incompletely repeated heptads in the HR-B domain (Fig.2). HR-B in classes A and C had a very characteristic structure of overlapping sets of hydrophobic heptapeptide repeats (Fig.2). According to the linker region between the HR-A and HR-B domains, OsHsfs family (Nover *et al.*, 2001) was divided into three classes, including 13 OsHsfAs, 8 OsHsfBs, and 4 OsHsfCs (Table 2).

Within the OsHsfs, the nuclear localization signals (NLS) composed of a cluster of arginine and lysine residues were detected adjacent to the HR-A/B domain (Table 2). There was a leucine-rich nuclear export signal (NES) at the C-terminus of all OsHsfAs except OsHsfA7, and of a small portion of OsHsfBs and OsHsfCs (Table 2). The C-terminal activation domain (CTAD) was only found in OsHsfA, suggesting that only class A Hsfs can activate autonomously.

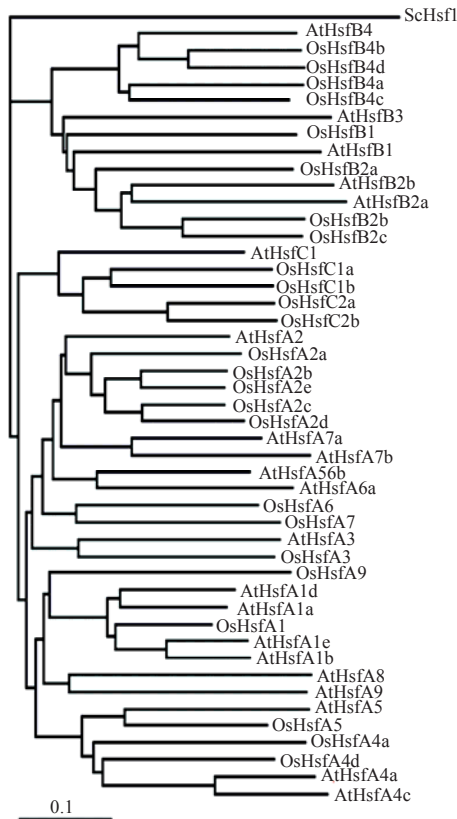
### Phylogenetic analysis of OsHsfs

To determine the phylogenetic relationship among the *OsHsfs*, neighbor-joining phylogenetic trees were constructed using the amino acid sequences of DBD, the HR-A/B region, and the linker between them (Fig.3). *Arabidopsis Hsf* genes were included in the phylogenetic tree as reference to classify rice *Hsfs*. As expected, the classes A, B and C Hsfs formed three individual clusters. Furthermore, the class A Hsfs were divided into two sub-clusters (Fig.3). In a previous study, the N-terminal part and C-terminal part of DBD and HR-A/B regions were used separately to draw phylogenetic trees (Nover *et al.*, 2001). Although most proteins fixed their positions in the different phylogenetic trees, a few Hsfs changed their positions (Nover *et al.*, 2001). Similar phenomenon was also observed on the OsHsfs (data not shown). A more convinced relationship of the Hsfs was revealed by combining the DBD, HR-A/B, and the flexible linker between DBD and HR-A/B (Fig.3).

**Table 2 Function motifs of rice OsHsfs**

Hsfs	NLS	NES	AHA motifs
HsfA1	(231)RRR-5aa-KKRRLLPK	(493)LTEQMGLL	AHA (449)DSFWEQFLVA
HsfA2a	(255)RNR-7aa-KKRRR	(366)LVQSIYHL	AHA (318)ESFWMQLLSL
HsfA2b	(239)RK-7aa-KKRRRR	(356)LSEKMGYL	AHA (328)DNFWHEELLINE
HsfA2c	(227)KEKRR-7aa-KKRRR	(345)LAQQLGYL	AHA (315)DDFWAELLVE
HsfA2d	(223)KMK-7aa-KKRRTR	(346)LAQKLGYL	AHA (315)DDFWHEELLINE
HsfA2e	(224)RK-7aa-KKRRRR	(340)LLSQKMGYL	AHA (314)EDFWEDLLHE
HsfA3	(247)RQQK-7aa-KRKFLK	(472)LDDGDLQL	AHA (463)KFWELDFQAL
HsfA4a	(200)RKKRR	(429)EKLGLL	AHA1 (375)DGFWQQFLTE AHA2 (416)HLWWGKRNV
HsfA4d	(210)KKRRVPK	(445)EQMGHL	AHA (397)DVFWERFLTE
HsfA5	(214)NKKRR	(470)VEQLKL	AHA (422)DKFWEQFLTE
HsfA6	(231)RKKRR	(319)LVQQIDCL	AHA1 (271)MIWYELLGEE AHA2 (306)EPWEEMGEEE
HsfA7	(282)KNGLRGA AKRQR	-	AHA1 (349)DDVWEELD DAL AHA2 (384)CGWVDDCPYL
HsfA9	(246)QRR-9aa-KKRR	(371)QMG PPL	AHA (380)DYDFPQLEQD
HsfB1	(263)RKRAR	-	-
HsfB2a	(265)REGKVRR	(275)LSDDLVLAL	-
HsfB2b	(318)RKRMR	-	-
HsfB2c	(327)LKRTR	-	-
HsfB4a	(346)RKRS	-	-
HsfB4b	(291)RKKRAHR	-	-
HsfB4c	(269)RKKP	(363)LVLECDL SL	-
HsfB4d	(286)KKRRVQL	-	-
HsfC1a	(229)RKRRR	-	-
HsfC1b	(209)KRRR	-	-
HsfC2a	(213)KRPRLLL	-	-
HsfC2b	(219)KRARLLL	-	-

Numbers in brackets indicate positions of the putative function motifs; NLS: nuclear localization signal; NES: nuclear export signal; AHA: aromatic, large hydrophobic and acidic amino acids. Aromatic and large hydrophobic residues of AHA are set in boldface type



**Fig.3 Neighbor-joining phylogenetic trees of *OsHsf* and *AtHsf* genes constructed using ClustalX program**  
 The tree was generated on the basis of the amino acid sequences of the N-terminal domains of *Hsfs* including the DBD region, the HR-A/B region and parts of the linker between both. ScHsf1 was set as the outgroup. Bar=substitutions/site

**Cis-acting elements in *OsHsf* promoters**

One kilobase upstream regions of the *OsHsf* genes were analyzed for *cis*-acting elements using PlantCARE software (Higo *et al.*, 1999). A total of 9 different *cis*-acting elements commonly existed in the promoters of *OsHsfs* (Table 3). Seven of these *cis*-acting elements were related to stress responses. Two *cis*-acting elements with the highest frequency were G-box/Sp1 and abscisic acid (ABA) response element (ABRE). These two elements are involved in the light responsiveness and the ABA response, respectively (Table 3). CCGTCC/CAT-box, LTR, and ARE/GC-motif are *cis*-acting elements related to meristem expression, low temperature response, and anaerobic induction. Compared with classes B and C *OsHsf* genes, class A genes contained more these two *cis*-elements, suggesting that class A genes may play different roles from classes B and C genes (Table 3). In addition to these two elements, other *cis*-elements occurred at a similar frequency among the promoters of these three classes.

**Expression patterns of *OsHsfs***

The number of ESTs for a specific gene in a cDNA library is considered to be proportional to the transcript abundance of the mRNA. We used the EST sequences downloaded from the dbEST to analyze the expression pattern of *OsHsfs* in various plant tissues and different developmental stages. A total of 391

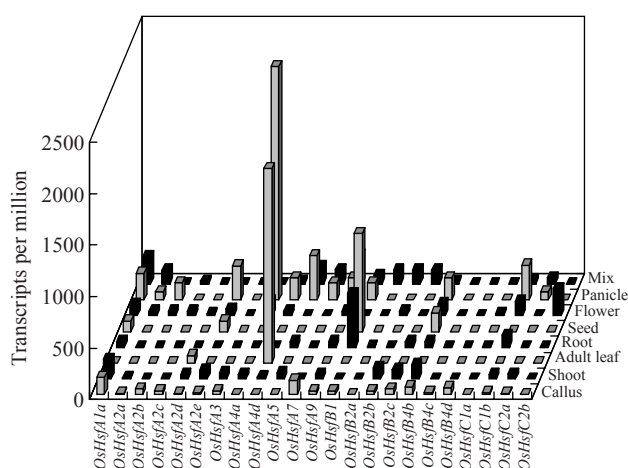
**Table 3 The high frequency *cis*-elements of *OsHsf* genes**

<i>Cis</i> -elements	<i>HsfA</i>													$T_1$	<i>HsfB</i>								<i>HsfC</i>				$T_2$	Descriptions
	1a	2a	2b	2c	2d	2e	3	4a	4d	5	6	7	9		1	2a	2b	2c	4a	4	4c	4d	1a	1b	2a	2b		
Skn-1 and GCN4-motif	2	2	0	1	0	0	1	1	1	1	1	1	4	15	1	1	3	0	0	3	0	2	1	4	2	0	17	Required for endosperm expression
CCGTCC and CAT-box	2	1	2	1	1	0	0	1	1	1	1	3	0	14	1	0	0	0	0	0	2	0	0	2	0	1	6	Related to meristem expression
G-box and Sp1	5	8	17	12	3	6	14	7	3	3	17	6	5	106	10	7	2	10	7	5	7	7	13	8	7	19	102	Involved in light response
HSE	0	3	1	2	2	2	0	1	0	0	2	1	0	14	3	1	2	1	0	1	1	0	2	0	1	1	13	Involved in heat stress response
LTR	0	2	1	1	1	0	1	0	1	0	0	0	0	7	0	0	0	0	1	1	0	0	0	0	0	0	2	Involved in low-temperature response
ARE and GC-motif	2	5	4	3	2	1	4	1	1	2	5	3	0	33	4	1	1	2	1	0	3	0	1	2	0	3	18	Involved in the anaerobic induction
MBS and CCAAT-box	1	1	0	1	2	1	0	2	1	1	3	2	1	16	1	1	1	2	3	2	1	3	1	1	0	1	17	MYB binding site, involved in drought-inducibility
ABRE	0	1	3	4	2	3	8	0	1	0	14	0	1	37	0	2	0	5	11	3	0	5	5	2	1	3	37	Involved in the abscisic acid response
CGTCA-motif	0	2	0	0	1	2	4	4	0	0	1	0	4	18	1	3	0	0	0	2	1	0	2	2	2	0	13	Involved in the MeJA-response

$T_1$ : total number of each *cis*-element in *HsfA*;  $T_2$ : total number of each *cis*-element in *HsfB* and *HsfC*



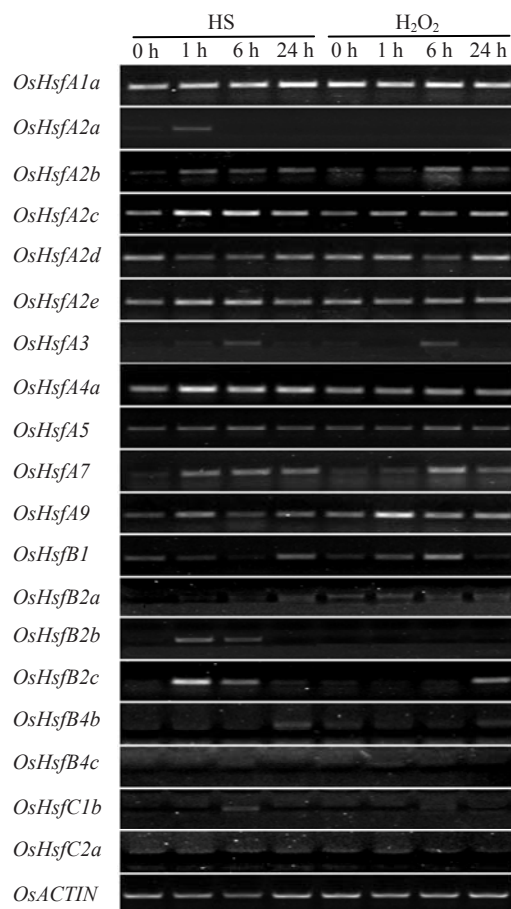
*OsHsf* ESTs corresponding to 23 of the 25 genes were identified except the *OsHsfA6* and *OsHsfB4a* genes (Table 1). The majority of *OsHsf* genes had a low to moderate level of transcripts in most tissues, while some displayed a tissue-specific manner (Fig.4). *OsHsfA4a* and *OsHsfA4d* were dominantly expressed in panicle and adult leaves, respectively. Overall, *OsHsfs* were expressed at a higher level in panicle and flower than in other tissues.



**Fig.4** Expression level of *OsHsfs* in different tissues

ESTs of each *Hsf* are collected from dbEST and the transcript ratios of all *Hsfs* in each library are calculated. Transcript levels of all *OsHsfs* in per million transcripts are counted according to the ratio. Normalized libraries and libraries with less than 5000 ESTs are excluded. Detail data are shown in Table A2

Under heat shock (HS) and  $H_2O_2$  treatment, the expression of class A *Hsfs* was higher than those of class B and class C *Hsfs* (Fig.5). These results are consistent with those derived from the analyses of EST data. The lack of the detectable transcripts of several *OsHsfs* under our condition might have resulted from the tissue specific expression pattern (*OsHsfA4d*) or low expression levels of the genes (e.g., *OsHsfB4a*, *OsHsfB4d*, and so on) as suggested by the digital expression pattern. The transcription of *OsHsfA1a*, *OsHsfA2b*, *OsHsfA3*, *OsHsfA7*, *OsHsfA9*, *OsHsfB2c*, and *OsHsfC1b* was up-regulated by both HS and  $H_2O_2$  treatments in a similar manner, while the up-regulation of *OsHsfA2a*, *OsHsfA2c*, *OsHsfA2e*, *OsHsfA4a*, *OsHsfB2b*, and *OsSHFC1b* was detected only under HS treatment, implying that there was a  $H_2O_2$  independent HS responsive pathway in rice.



**Fig.5** Expression levels of *OsHsfs* under heat shock (HS) and oxidative stress ( $H_2O_2$ ) analyzed by RT-PCR

mRNA was extracted from shoots of 7-d-old *O. japonica* seedlings treated with heat (37 °C) and 20 mmol/L  $H_2O_2$  for different time points. The transcript level of *OsACTIN1* was used as the housekeep gene control. Class A *Hsfs* and *ACTIN* genes were amplified for 28 cycles, while classes B and C *Hsfs* were amplified for 30 cycles

## DISCUSSION

Unlike yeast and *Drosophila* that only contain one *Hsf* gene, plant has a more complex family of *Hsf* genes (Baniwal *et al.*, 2004; Miller and Mittler, 2006). In this study, we identified 25 *OsHsfs* based on the rice genome. Majority of the predicted *OsHsfs* were supported by the FL-cDNA and the EST sequences (Table 1). These 25 *OsHsfs* were divided into 3 classes (A, B and C) based on the protein structure and phylogenetic relationship (Figs.2~3). The sequence analysis identified the conserved DBD, the HR-A/B domain, and the NLS that were the common motifs of OsHSFs. The NES and the AHA motifs

were also the common motifs of class A genes, but they were only detected in a small portion of classes B and C genes (Table 2).

Recently, great progress has been made in elucidating the functions of *Hsfs* (von Koskull-Döring *et al.*, 2007). *AtHsfA9* is involved in seed development and controlled by seed-specific transcription factor abscisic acid-insensitive 3 (ABI3) (Kotak *et al.*, 2007a). The expression of *AtHsfA3* is induced by drought and heat, and is dependent on the dehydration response element binding protein 2A (DREB2A) (Sakuma *et al.*, 2006; Schramm *et al.*, 2008). Promoter analysis showed that an array of *OsHsf* genes contains ABREs (Table 3). This indicates that an ABA pathway may be involved in *Hsf* induction and responsible for control of downstream processes, such as seed development or drought resistance (Kotak *et al.*, 2007b). The transcripts of *AtHsfA2* increased under several stress conditions, especially in response to high light plus heat stress (Nishizawa *et al.*, 2006). During repeated cycles of heat stress and recovery, *HsfA2* becomes a dominant *Hsf* in tomato and *Arabidopsis* (Mishra *et al.*, 2002; Schramm *et al.*, 2006). In contrast to tomato and *Arabidopsis* containing only one *HsfA2*, rice has five *HsfA2* genes (von Koskull-Döring *et al.*, 2007). Our results show that *OsHsfA2a*, *OsHsfA2b*, *OsHsfA2c*, and *OsHsfA2e* were induced by heat stress, while *OsHsfA2b* and *OsHsfA2c* were induced by H<sub>2</sub>O<sub>2</sub> also (Fig.5). From the result of expression pattern, the *OsHsfA2* sub-family was closely related with rice stress response. Overexpression of *OsHsfA2e* in *Arabidopsis* led to enhanced thermo and salt tolerance in transgenic plants (Yokotani *et al.*, 2008). Further studies to elucidate the functions of the other members in the sub-family may also have potential for the development of transgenic plants with improved stress tolerance.

H<sub>2</sub>O<sub>2</sub> is reported to be an essential component in the heat stress signaling pathway (Volkov *et al.*, 2006), and the *Hsf* genes were considered as H<sub>2</sub>O<sub>2</sub> sensors in plant (Miller and Mittler, 2006). Human and *Drosophila* Hsf1 was shown to sense hydrogen peroxide directly and assemble into a homotrimer in a reversible and redox-regulated manner (Storozhenko *et al.*, 1998; Zhong *et al.*, 1998). In *Arabidopsis*, the heat stress-induced H<sub>2</sub>O<sub>2</sub> is required for effective expression of heat shock genes (Volkov *et al.*, 2006), and the *AtHsf4a* may be an important sensors of H<sub>2</sub>O<sub>2</sub>

(Davletova *et al.*, 2005). The intimate relationship between the HS and oxidative stress response suggests that some *Hsfs* might be responsive to both stresses. In this study, eight *OsHsfs* (*OsHsfA1a*, *OsHsfA2b*, *OsHsfC1b*, *OsHsfA3*, *OsHsfA7*, *OsHsfA9*, *OsHsfB2c*, and *OsHsfC1b*) were found to be induced by both heat shock and H<sub>2</sub>O<sub>2</sub> (Fig.5). Heat stress led to the accumulation of H<sub>2</sub>O<sub>2</sub> in tobacco and *Arabidopsis* culture cells (Volkov *et al.*, 2006) and mustard seedlings (Dat *et al.*, 1998). Hence, it is likely that *Hsfs* sense the H<sub>2</sub>O<sub>2</sub> level in cells and transfer the stress signaling. Mutation of *OsHsfA4d* led to a lesion mimic phenotype in mature leaves (Yamanouchi *et al.*, 2002). The phenotype may be caused by H<sub>2</sub>O<sub>2</sub> accumulation that transferred a cell death signaling (Takahashi *et al.*, 1999). It is likely that *OsHsfA4d* works in mature leaves to sense H<sub>2</sub>O<sub>2</sub> levels as its homologue *AtHsfA4a* in *Arabidopsis* (Davletova *et al.*, 2005). It is also worth noting that *OsHsfA4a*, the other member of *OsHsfA4*, has extremely high transcript abundance in panicle (Fig.4). Further research will help to elucidate the special functions of these genes.

## References

- Audic, S., Claverie, J.M., 1997. The significance of digital gene expression profiles. *Genome Res.*, **7**(10):986-995.
- Baniwal, S.K., Bharti, K., Chan, K.Y., Fauth, M., Ganguli, A., Kotak, S., Mishra, S.K., Nover, L., Port, M., Scharf, K.D., Tripp, J., Weber, C., Zielinski, D., von Koskull-Döring, P., 2004. Heat stress response in plants: a complex game with chaperones and more than twenty heat stress transcription factors. *J. Biosci.*, **29**(4):471-487. [doi:10.1007/BF02712120]
- Baniwal, S.K., Chan, K.Y., Scharf, K.D., Nover, L., 2007. Role of heat stress transcription factor HsfA5 as specific repressor of HsfA4. *J. Biol. Chem.*, **282**(6):3605-3613. [doi:10.1074/jbc.M609545200]
- Bharti, K., von Koskull-Döring, P., Bharti, S., Kumar, P., Tintschl-Korbitzer, A., Treuter, E., Nover, L., 2004. Tomato heat stress transcription factor HsfB1 represents a novel type of general transcription coactivator with a histone-like motif interacting with the plant CREB binding protein ortholog HAC1. *Plant Cell*, **16**(6):1521-1535. [doi:10.1105/tpc.019927]
- Chang, Y.Y., Liu, H.C., Liu, N.Y., Chi, W.T., Wang, C.N., Chang, S.H., Wang, T.T., 2007. A heat-inducible transcription factor, HsfA2, is required for extension of acquired thermotolerance in *Arabidopsis*. *Plant Physiol.*, **143**(1):251-262. [doi:10.1104/pp.106.091322]
- Czarnecka-Verner, E., Pan, S., Salem, T., Gurley, W.B., 2004. Plant class B HSFs inhibit transcription and exhibit affinity for TFIIB and TBP. *Plant Mol. Biol.*, **56**(1):57-75.



- [doi:10.1007/s11103-004-2307-3]
- Dat, J.F., Lopez-Delgado, H., Foyer, C.H., Scott, I.M., 1998. Parallel changes in H<sub>2</sub>O<sub>2</sub> and catalase during thermotolerance induced by salicylic acid or heat acclimation in mustard seedlings. *Plant Physiol.*, **116**(4):1351-1357. [doi:10.1104/pp.116.4.1351]
- Davletova, S., Rizhsky, L., Liang, H., Shengqiang, Z., Oliver, D.J., Coutu, J., Shulaev, V., Schlauch, K., Mittler, R., 2005. Cytosolic ascorbate peroxidase 1 is a central component of the reactive oxygen gene network of *Arabidopsis*. *Plant Cell*, **17**(1):268-281. [doi:10.1105/tpc.104.026971]
- Fu, S., Rogowsky, P., Nover, L., Scanlon, M.J., 2006. The maize heat shock factor-binding protein paralogs EMP2 and HSBP2 interact non-redundantly with specific heat shock factors. *Planta*, **224**(1):42-52. [doi:10.1007/s00425-005-0191-y]
- Hicks, M.R., Holberton, D.V., Kowalczyk, C., Woolfson, D.N., 1997. Coiled-coil assembly by peptides with non-heptad sequence motifs. *Folding and Design*, **2**(3):149-158. [doi:10.1016/S1359-0278(97)00021-7]
- Higo, K., Ugawa, Y., Iwamoto, M., Korenaga, T., 1999. Plant cis-acting regulatory DNA elements (PLACE) database: 1999. *Nucleic Acids Res.*, **27**(1):297-300. [doi:10.1093/nar/27.1.297]
- Jeon, J., Choi, J., Park, J., Lee, Y.H., 2008. Functional genomics in the rice blast fungus to unravel the fungal pathogenicity. *J. Zhejiang Univ. Sci. B*, **9**(10):747-752. [doi:10.1631/jzus.B0860014]
- Kotak, S., Larkindale, J., Lee, U., von Koskull-Döring, P., Vierling, E., Scharf, K.D., 2007a. Complexity of the heat stress response in plants. *Curr. Opin. Plant Biol.*, **10**(3):310-316. [doi:10.1016/j.pbi.2007.04.011]
- Kotak, S., Vierling, E., Baumlein, H., von Koskull-Döring, P., 2007b. A novel transcriptional cascade regulating expression of heat stress proteins during seed development of *Arabidopsis*. *Plant Cell*, **19**(1):182-195. [doi:10.1105/tpc.106.048165]
- Larkindale, J., Hall, J.D., Knight, M.R., Vierling, E., 2005. Heat stress phenotypes of *Arabidopsis* mutants implicate multiple signaling pathways in the acquisition of thermotolerance. *Plant Physiol.*, **138**(2):882-897. [doi:10.1104/pp.105.062257]
- Miller, G., Mittler, R., 2006. Could heat shock transcription factors function as hydrogen peroxide sensors in plants? *Ann. Bot. (Lond)*, **98**(2):279-288. [doi:10.1093/aob/mcl107]
- Mishra, S.K., Tripp, J., Winkelhaus, S., Tschiersch, B., Theres, K., Nover, L., Scharf, K.D., 2002. In the complex family of heat stress transcription factors, HsfA1 has a unique role as master regulator of thermotolerance in tomato. *Genes Dev.*, **16**(12):1555-1567. [doi:10.1101/gad.228802]
- Nishizawa, A., Yabuta, Y., Yoshida, E., Maruta, T., Yoshimura, K., Shigeoka, S., 2006. *Arabidopsis* heat shock transcription factor A2 as a key regulator in response to several types of environmental stress. *Plant J.*, **48**(4):535-547. [doi:10.1111/j.1365-313X.2006.02889.x]
- Nover, L., Bharti, K., Doring, P., Mishra, S.K., Ganguli, A., Scharf, K.D., 2001. *Arabidopsis* and the heat stress transcription factor world: how many heat stress transcription factors do we need? *Cell Stress Chaperones*, **6**(3):177-189. [doi:10.1379/1466-1268(2001)006<0177:AATHST>2.0.CO;2]
- Sakuma, Y., Maruyama, K., Qin, F., Osakabe, Y., Shinozaki, K., Yamaguchi-Shinozaki, K., 2006. Dual function of an *Arabidopsis* transcription factor DREB2A in water-stress-responsive and heat-stress-responsive gene expression. *Proc. Natl. Acad. Sci. USA*, **103**(49):18822-18827. [doi:10.1073/pnas.0605639103]
- Schramm, F., Ganguli, A., Kiehlmann, E., Englich, G., Walch, D., von Koskull-Döring, P., 2006. The heat stress transcription factor HsfA2 serves as a regulatory amplifier of a subset of genes in the heat stress response in *Arabidopsis*. *Plant Mol. Biol.*, **60**(5):759-772. [doi:10.1007/s11103-005-5750-x]
- Schramm, F., Larkindale, J., Kiehlmann, E., Ganguli, A., Englich, G., Vierling, E., von Koskull-Döring, P., 2008. A cascade of transcription factor DREB2A and heat stress transcription factor HsfA3 regulates the heat stress response of *Arabidopsis*. *Plant J.*, **53**(2):264-274. [doi:10.1111/j.1365-313X.2007.03334.x]
- Schultheiss, J., Kunert, O., Gase, U., Scharf, K.D., Nover, L., Ruterjans, H., 1996. Solution structure of the DNA-binding domain of the tomato heat-stress transcription factor HSF24. *Eur. J. Biochem.*, **236**(3):911-921. [doi:10.1111/j.1432-1033.1996.00911.x]
- Storozhenko, S., de Pauw, P., van Montagu, M., Inze, D., Kushnir, S., 1998. The heat-shock element is a functional component of the *Arabidopsis APX1* gene promoter. *Plant Physiol.*, **118**(3):1005-1014. [doi:10.1104/pp.118.3.1005]
- Takahashi, A., Kawasaki, T., Henmi, K., Shi, I.K., Kodama, O., Satoh, H., Shimamoto, K., 1999. Lesion mimic mutants of rice with alterations in early signaling events of defense. *Plant J.*, **17**(5):535-545. [doi:10.1046/j.1365-313X.1999.00405.x]
- Volkov, R.A., Panchuk, I.I., Mullineaux, P.M., Schoffl, F., 2006. Heat stress-induced H<sub>2</sub>O<sub>2</sub> is required for effective expression of heat shock genes in *Arabidopsis*. *Plant Mol. Biol.*, **61**(4-5):733-746. [doi:10.1007/s11103-006-0045-4]
- von Koskull-Döring, P., Scharf, K.D., Nover, L., 2007. The diversity of plant heat stress transcription factors. *Trends Plant Sci.*, **12**(10):452-457. [doi:10.1016/j.tplants.2007.08.014]
- Yamanouchi, U., Yano, M., Lin, H., Ashikari, M., Yamada, K., 2002. A rice spotted leaf gene, *Spl7*, encodes a heat stress transcription factor protein. *Proc. Natl. Acad. Sci. USA*, **99**(11):7530-7535. [doi:10.1073/pnas.112209199]
- Yokotani, N., Ichikawa, T., Kondou, Y., Matsui, M., Hirochika, H., Iwabuchi, M., Oda, K., 2008. Expression of rice heat stress transcription factor OsHsfA2e enhances tolerance to environmental stresses in transgenic *Arabidopsis*. *Planta*, **227**(5):957-967. [doi:10.1007/s00425-007-0670-4]
- Zhong, M., Orosz, A., Wu, C., 1998. Direct sensing of heat and oxidation by *Drosophila* heat shock transcription factor. *Mol. Cell*, **2**(1):101-108. [doi:10.1016/S1097-2765(00)80118-5]

APPENDIX: SUPPORTING ONLINE MATERIAL FOR IDENTIFICATION AND EXPRESSION ANALYSIS OF *OsHsfs* IN RICE**Table A1 Gene specific primers used in this research**

<i>Hsfs</i>	Forward (5' to 3')	Reverse (5' to 3')
<i>OsHsfA1a</i>	TATGCCAAATGGTCAAGGTC	CAGGCAAAGAGAATACACCC
<i>OsHsfA2a</i>	GGCTTCCTCCAGATGCTCGTC	CGTCGTCATCCTCCTCGTCGTT
<i>OsHsfA2b</i>	AGCAGAGGCAACAGCAGATG	CAGACCTCCAGCATCCATAG
<i>OsHsfA2c</i>	GCAGAAACAGGTCCAGATG	TCTACTTTACCCTTCCCCAG
<i>OsHsfA2d</i>	GAGGTTGGTCAGTTCGGATT	GGTTGAGAAATGGCACTATGT
<i>OsHsfA2e</i>	ATGGCATTCTTGTCACGAGT	GGTTCTGGTATCCTCATCG
<i>OsHsfA3</i>	CAACACACTGAGAAGGGAGA	TGCTCTCTCCAGTGTGTTGT
<i>OsHsfA4a</i>	TGGCAGCAGTTTCTTACCGAG	AGGCACCAATGTCAGCGTTC
<i>OsHsfA4d</i>	CCCATCTCCATTTATCCACT	CATTTGCTCGGTGATCTGAT
<i>OsHsfA5</i>	GTAAGCCTATCCACAGCCAC	ATCTTGGTCTGTCGCTGCTC
<i>OsHsfA7</i>	TCCGAAAGGTCACTCCAGAT	TGGTCTGCTGTTGCCCTTCTC
<i>OsHsfA9</i>	GGCACTACCAGCAAACATC	CCACTGGATTACTTGACCT
<i>OsHsfB1</i>	GGACAACCAAACGCTGACGA	CGACGATGGAACGCTGACC
<i>OsHsfB2a</i>	GGCATAACGACGGCGATACC	CCTTCCTCCTCCTCCTCCTCT
<i>OsHsfB2b</i>	GGCTGCTCTGCGAGATAACCC	CTGCTGGGTGGAGGCGTACTTG
<i>OsHsfB2c</i>	GCAACAGAGCAACTTGTGA	CACCAACACACACACAAAGC
<i>OsHsfB4b</i>	GACGACGACGACGACGAT	TCATCACTCTTACCAGCAT
<i>OsHsfC1b</i>	TACTTCAAGCACCGCAACT	CCGCTGCACCGCCTCGATG
<i>OsHsfC2a</i>	TGTTTGGACGAAGTGGCTG	ACAAGGCACACTCAACATTC
<i>OsACTIN</i>	TCAGCAACTGGGATGATATGGAG	GCCGTGTGGTGAATGAGTAAC

**Table A2 Expression level of *OsHsfs* in different tissues**

Gene	Transcripts per million							
	Callus	Shoot	Adult leaf	Root	Seed	Flower	Panicle	Mix
<i>OsHsfA1a</i>	168	190	0	58	102	108	260	269
<i>OsHsfA2a</i>	10	10	0	0	0	43	80	136
<i>OsHsfA2b</i>	56	0	0	0	0	43	166	0
<i>OsHsfA2c</i>	37	0	0	0	0	43	0	30
<i>OsHsfA2d</i>	10	41	76	0	0	22	0	0
<i>OsHsfA2e</i>	19	82	0	0	102	65	332	0.018
<i>OsHsfA3</i>	37	61	0	0	0	0	0	0
<i>OsHsfA4a</i>	0	45	0	0	0	141	2268	0
<i>OsHsfA4d</i>	0	21	1892	0	0	43	215	30
<i>OsHsfA5</i>	0	61	0	58	0	0	432	170
<i>OsHsfA7</i>	143	0	0	0	0	0	166	142
<i>OsHsfA9</i>	37	46	0	58	0	43	216	280
<i>OsHsfB1</i>	37	0	0	523	953	0	166	85
<i>OsHsfB2a</i>	0	0	0	10	0	0	0	136
<i>OsHsfB2b</i>	37	108	0	0	0	43	0	136
<i>OsHsfB2c</i>	56	93	0	58	0	0	0	136
<i>OsHsfB4b</i>	75	139	0	58	183	117	216	30
<i>OsHsfB4c</i>	19	0	0	0	0	0	0	0
<i>OsHsfB4d</i>	67	0	0	0	0	0	0	0
<i>OsHsfC1a</i>	0	0	0	0	0	22	0	0
<i>OsHsfC1b</i>	19	41	0	116	0	141	338	42
<i>OsHsfC2a</i>	10	46	0	0	0	0	80	61
<i>OsHsfC2b</i>	0	0	0	0	0	264	0	0