

ERRATA

Antibody Response to Human Immunodeficiency Virus Type 1 Protease according to Risk Group and Disease Stage

CHARLES A. B. BOUCHER, MICHAEL H. DE JAGER, CHRISTINE DEBOUCK, LEON G. EPSTEIN, FRANK DE WOLF, TOM F. W. WOLFS, AND JAAP GOUDSMIT

Human Retrovirus Laboratory, Academic Medical Center, and Department of Infectious Diseases, Municipal Health Service, Amsterdam, The Netherlands; Department of Molecular Genetics, Smith Kline & French Laboratories, King of Prussia, Pennsylvania 19479; and University of Medicine and Dentistry-New Jersey Medical School and Children's Hospital AIDS Program, Newark, New Jersey 07103-2757

Volume 27, no. 7, p. 1580, Table 4, column 1. In lines 2 and 7, "HIV-1 Ag" should read "HIV-1 cAg," and in lines 3 and 8, "HIV-1 Ab" should read "HIV-1 cAb."

Use of an rRNA Probe and Restriction Endonuclease Analysis To Fingerprint *Pasteurella multocida* Isolated from Turkeys and Wildlife

KURT P. SNIPES, DWIGHT C. HIRSH, RICK W. KASTEN, LORI M. HANSEN, DAVID W. HIRD, TIM E. CARPENTER, AND R. H. McCAPES

Department of Epidemiology and Preventive Medicine and Department of Veterinary Microbiology and Immunology, School of Veterinary Medicine, University of California, Davis, California 95616

Volume 27, no. 8, p. 1850. Figure 1 should appear as shown below.

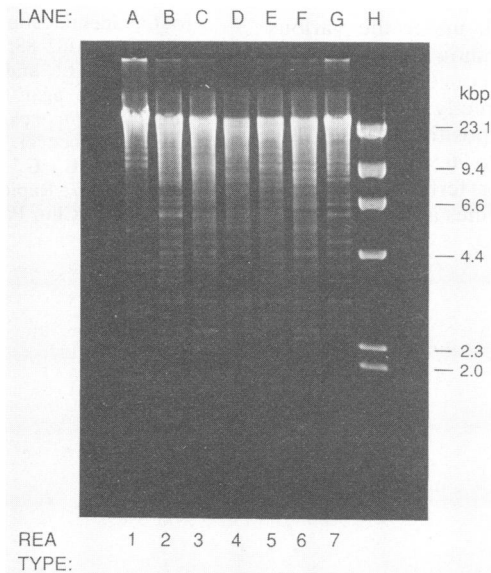


FIG. 1. Agarose gel electrophoresis of whole-cell DNA obtained from *P. multocida* isolated from turkeys with fowl cholera (FC) and from wild mammals and birds on premises 0727 after digestion with *Sma*I and *Sal*I. Lanes contain DNAs from isolates FC 1 (lane A), FC 139B (lane B), FC 125 (lane C), FC 127B (lane D), 1-36 (lane E), 38-22 (lane F), and 38-30 (lane G). Lane H contains DNA isolated from lambda phage and digested with *Hind*III, with numbers on the right representing the number of kilobase pairs (kbp) of the respective fragments.