

A Method to Quantify Mouse Coat-Color Proportions

Songthip Ounpraseuth¹, Tonya M. Rafferty², Rachel E. McDonald-Phillips^{2a}, Whitney M. Gammill^{2a,b}, Eric R. Siegel¹, Kristin L. Wheeler^{2a,c}, Erik A. Nilsson^{2a,d}, Craig A. Cooney^{2,3*}

1 Department of Biostatistics, The University of Arkansas for Medical Sciences, Little Rock, Arkansas, United States of America, **2** Department of Biochemistry and Molecular Biology, The University of Arkansas for Medical Sciences, Little Rock, Arkansas, United States of America, **3** Central Arkansas Veterans Healthcare Systems, Little Rock, Arkansas, United States of America

Abstract

Coat-color proportions and patterns in mice are used as assays for many processes such as transgene expression, chimerism, and epigenetics. In many studies, coat-color readouts are estimated from subjective scoring of individual mice. Here we show a method by which mouse coat color is quantified as the proportion of coat shown in one or more digital images. We use the yellow-agouti mouse model of epigenetic variegation to demonstrate this method. We apply this method to live mice using a conventional digital camera for data collection. We use a raster graphics editing program to convert agouti regions of the coat to a standard, uniform, brown color and the yellow regions of the coat to a standard, uniform, yellow color. We use a second program to quantify the proportions of these standard colors. This method provides quantification that relates directly to the visual appearance of the live animal. It also provides an objective analysis with a traceable record, and it should allow for precise comparisons of mouse coats and mouse cohorts within and between studies.

Citation: Ounpraseuth S, Rafferty TM, McDonald-Phillips RE, Gammill WM, Siegel ER, et al. (2009) A Method to Quantify Mouse Coat-Color Proportions. *PLoS ONE* 4(4): e5414. doi:10.1371/journal.pone.0005414

Editor: Leszek Wojnowski, University Mainz, Germany

Received: December 23, 2008; **Accepted:** March 25, 2009; **Published:** April 30, 2009

Copyright: © 2009 Ounpraseuth et al. This is an open-access article distributed under the terms of the Creative Commons Attribution License, which permits unrestricted use, distribution, and reproduction in any medium, provided the original author and source are credited.

Funding: WMG was supported by a Summer Undergraduate Research Fellowship (SURF) from the Department of Biochemistry and Molecular Biology at UAMS. This work is supported by grant P01AG20641 from the National Institute on Aging/NIH and grant R01DK63945 from the National Institute of Diabetes and Digestive and Kidney Diseases/NIH. The funders had no role in study design, data collection and analysis, decision to publish, or preparation of the manuscript.

Competing Interests: CAC acknowledges U.S. patent no. 6,541,680 and U.S. patent application 10402704. This has no influence on the content of this article.

* E-mail: CooneyCraigA@uams.edu

^a Current address: Department of Pharmacology and Toxicology, the University of Arkansas for Medical Sciences, Little Rock, Arkansas, United States of America

^b Current address: University of Arkansas, Fayetteville, Arkansas, United States of America

^c Current address: Rhodes College, Memphis, Tennessee, United States of America

^d Current address: Department of Computer and Information Science, Linköping University, Linköping, Sweden

Introduction

Animals that exhibit coat-color variation and mosaicism have been used to evaluate a variety of effects in numerous studies [1–9]. In the yellow-agouti mouse model [10], the agouti protein antagonizes the melanocortin-1 receptor to promote the expression of the yellow pigment pheomelanin giving hairs a yellow color [11]. The *A^y* allele of *agouti* contains an intracisternal A particle (IAP) element inserted upstream of the *agouti* coding exons [12]. Over expression of agouti from this allele causes yellow hair. The *A^y* allele is epigenetically regulated and imprinted leading to only partial penetrance of the allele and to coats on most *A^y/a* mice that are a combination of yellow and agouti areas (mottling) [2,10,12–17].

Epigenetically determined coat color in this model is influenced by prenatal environmental exposure to compounds such as folate, vitamin B₁₂ and methyl donors [2,15,16,18], isoflavone phytoestrogens [19], DNA methyltransferase gene dosage [5] and maternal epigenetics [2,10,14]. To measure the influence of treatment factors on coat color, each mouse is classified into a pre-defined category or “phenotype” that constitutes one of several ordinal categories spanning the range of coat colors from “pseudoagouti” (no yellow) to “clear yellow” (no agouti spots). Depending on the laboratory, the number of ordinal categories can be two [10], three [14], four [5], five [16,18,19], or six [2,15].

Although this ordinal-category framework is useful for assaying coat-color differences between treatment groups, the wide variation in the number of ordinal categories among laboratories makes it difficult to compare results from different studies. Even when two laboratories use the same number of ordinal categories, category definitions may differ (compare, for example, Cropley et al. [18] with Dolinoy et al. [19]), thus adding to the difficulty of comparison between studies. Laboratories employing fewer categories have the advantage of fewer definitions, but incur the costs of coarser calibration and attendant lower resolution. Finally, assigning a mouse to a coat-color category requires the grader to estimate the amount of yellow in the mouse’s coat; this is currently a largely subjective process.

Here we describe a method to quantify the proportions of yellow and agouti in mouse coats. This method gives a numerical proportion and achieves approximately decile resolution over the population. The data generated by this method are continuous, not discrete, and thus will allow for meaningful use of regression, repeated-measures analysis, and other statistical procedures that go beyond the contingency-table methods currently employed. Most importantly, quantification by this method does not depend appreciably or systematically on the person assessing the mouse, and in that sense is objective. This method thus has the potential to allow for comparisons of experimental data between different studies and research groups.

Materials and Methods

Mice

Mice of the VY strain and heterozygous *A^g/a* genotype at the *agouti* locus were used [2,15]. This VY strain (originally VY/WfC3Hf/Nctr-*A^g*) was a gift from Dr. George Wolff (National Center for Toxicological Research, Jefferson AR). This colony has been maintained at UAMS for seven years. Most such mice have yellow and agouti mottled coats. Mice were chosen with a range of levels of agouti in their coats to demonstrate the method, although we mainly chose mice between 0 and 50% agouti because, except for the colors used, this coloring process would be equivalent to coloring mice that are 50 to 100% agouti. Coats of these mice vary on the backs, sides, and heads, but not the abdomens. All animal experiments were approved by and conducted in accordance with the Institutional Animal Care and Use Committee of UAMS.

Photography

Mice were photographed with a Nikon Coolpix 5000 digital camera under diffuse illumination from an Elmo model EV-368 illuminator. All images used the same illuminator, camera, camera settings, light blue background (Staples 110lb blue cardstock item number 490891) and were taken by the same photographer (TMR). Each mouse was photographed from the top (T) and from each side (left and right, L and R). Side views were between 30 and 60 degrees from vertical. Sets of photographs were taken on each of three days. Photographs of any one mouse were taken within one week, so that variations in coat appearance due to factors such as weight gain would be minimal. Photographs were taken of twelve mice. Images were saved as jpg files.

Quantification of Mouse Coat Color

A copy of each mouse image was opened in a graphics program, the GNU Image Manipulation Program v.2.2 (GNU Project, <http://www.gnu.org/>), which is a raster graphics editor. On these pictures, background regions were selected using the Lasso tool (with Antialiasing inactive) and colored red with the Paint Bucket tool. The background, eyes, ears, paws, tail, bald spots and any areas that were not mouse coat were colored red. Agouti regions were selected with the Magic Wand tool, and the threshold was increased or decreased until the selected areas most closely matched the regions of agouti coat. The selected agouti regions were then colored brown with the Paint Bucket tool. The Select Regions By Color tool was then used to select the remainder of the coat (yellow) and color it yellow with the Paint Bucket tool. The Red, Green, Blue (RGB) values used for each color are given in Table 1. The Flatten Image command was used and the new file was saved. Each mouse image was colored at least two times and colorings were matched for correspondence of natural agouti and yellow regions of the mouse image with the agouti and yellow regions of the coloring. Two individuals called raters matched colorings with images. The two raters acted independently of each

other, and their results were subsequently evaluated by a third individual for quality-assurance purposes. The brown and yellow proportions were calculated using a program written in the R language (<http://cran.r-project.org/>) [20]. The following R script computes the brown and yellow proportions for each mouse.

```
library("rimage")
library(base)
x<-read.jpeg("filename.jpg")
plot(x)
x1<-as.vector(x[,1])
x2<-as.vector(x[,2])
x3<-as.vector(x[,3])
y<-cbind(x1,x2,x3)
counts<-ifelse(y[,2]<=.05,1,ifelse(y[,2]>.05 & y[,2]<=.3,2,3))
table(counts)
z<-as.matrix(table(counts))
pct<-z[2:3,]
colors<-c("brown","yellow")
color_pct<-round(pct/sum(pct)*100,1)
color_pct<-paste(color_pct, "%", sep = "")
pie(pct,main = "Mouse Coat Color Proportions", col = colors,
label = color_pct, cex = .8)
legend(1.5,.5,c("Brown","Yellow"),cex = .8,fill = colors)
```

In the above script the filename.jpg should be replaced with the actual name of the file (e.g. Mouse5colored.jpg) to be analyzed.

Data Analysis

For each of the three days of photographs and for each rater, the mouse’s left-side and right-side yellow proportions were averaged together and called “Sides”, while its Top yellow proportion was kept separate. Twelve measurements per mouse (six Top and six Sides) were thus obtained, and the difference between Top and Sides was calculated. Additionally, the Top measurements, and likewise the Sides measurements, were averaged within each mouse across raters, across three days of photographs, and both, and the differences between Top and Sides averages were calculated, in order to study the effect of aggregating a mouse’s measurements from different times and raters. Top, Sides, and difference were summarized by rater, time, and average as means and standard deviations (SDs). The Two One-Sided Tests (TOST) procedure [21] was used at 5% alpha to determine whether measurements from Top and Sides were equivalent to within ±10 percentage points. Values from Rater 1 versus Rater 2 were plotted via both standard scatterplot and Bland-Altman plot [22]; for the latter, 95% limits of agreement were calculated using the modification of Bland and Altman [23].

For the continuous mouse coat-color-proportion measurements derived from our proposed method to be useful as a research tool, they must have a high degree of repeatability. Variations in continuous measurements can arise from inconsistent measurement practices as well as differences in (or wearing out of) equipment. We quantified the within- and between-observer variations by re-measuring the same mouse on three different occasions by two different raters.

Because mice were rated by two individuals, measurements of the level of agreement between raters were needed. Many methods-development papers try to measure agreement by calculating the Pearson correlation coefficient between the raters or methods, but this is inadequate [22]. Van Belle [24] notes that

Table 1. RGB proportions for the red, brown, and yellow colors.

Color	R	G	B
Red	254	0	0
Brown	96	57	18
Yellow	255	255	0

doi:10.1371/journal.pone.0005414.t001

the Pearson correlation coefficient captures only precision while ignoring both bias and differences in dynamic range. However, a different measure, the Intraclass Correlation Coefficient [25], incorporates the bias and dynamic-range differences into the calculation; as a result, this measure is widely accepted in the social sciences as the preferred measure of agreement between two raters or two methods.

The intraclass correlation coefficient (ICC) assesses the relative extent to which multiple continuous measurements taken by different individuals, or by the same person on different occasions, are related. In general, the ICC describes the ratio of two variances

$$ICC = \frac{\sigma_b^2}{\sigma_b^2 + \sigma_w^2}$$

where σ_b^2 denotes the variation between subjects (i.e., between mice), and σ_w^2 is the pooled variance within subjects. The range of the ICC may be between 0 and 1. A high ICC value would indicate that there is little variation in the coat-color percentages computed for each mouse by the raters.

Shrout and Fleiss [25] describe six ICC notations and their uses for reliability. For our study, we report the ICC(2,1), for which all mice are assessed by the same raters (judges) who are assumed to be a random subset of all possible judges. We used SAS® Version 9.1 (SAS Institute, Carey, NC) along with two user-written macros to calculate the ICCs and their 95% confidence intervals, INTRACC by Robert Hamer (<http://www.psych.yorku.ca/lab/sas/intracc.htm>), and ICC macro from Douglas Steinley and Phillip Wood (<http://ourworld.compuserve.com/homepages/jsuebersax/icc.htm>).

Results

We used a group of mottled mice that varied from mainly yellow to mainly agouti to quantify their coat color patterns. Each

mouse was photographed at three different angles (left, right and top) on each of three different days. Two individuals, called raters, colored copies of each photograph. In some cases raters had the option of choosing from two or more existing colorings of a photograph or producing their own coloring. Raters' matches of colored pictures were screened for accurate match by a third person. Except for this screening by a third person, raters were independent and did not communicate with each other about mouse coloring. We mainly colored mice between 0 and 50% agouti because, except for the colors used, this coloring process would be equivalent to coloring mice that are 50 to 100% agouti. Example photographs, colorings and quantifications are shown in Figure 1.

An important part of the method is matching the coat color pattern on each mouse to a standardized color version that can be readily quantified using a computer. Because this part of the method relies on visual matching, we had two raters color mice, and we then compared their results.

Photographs of mice were taken from each side at a substantial angle to vertical ("Sides") as well as along the vertical ("Top"). Figure 2 and Figure 3 show standard scatter plots of percents yellow in the Sides and Top, respectively, of each mouse as determined by rater 1 versus that determined by rater 2. The Pearson Correlation Coefficients between raters were 0.989 ($P<0.0001$) for Figure 2 and 0.961 ($P<0.0001$) for Figure 3. The diagonal line in both figures is "the line of equality on which all points would lie if the two [raters] gave exactly the same reading every time" [22]; distance from the line of equality indicates the amount by which the two raters' measurements disagree. A high-resolution view of rater disagreement is shown in the Bland-Altman plots of Figure 4 and Figure 5, for mouse Sides and Top, respectively, in which the difference between raters is plotted against the average between them. For percents yellow in the sides of the mice, the mean difference between raters was 1.92% and the 95% limits of agreement were -7.53% to +11.37%, a spread of around 19 percentage points. For percents

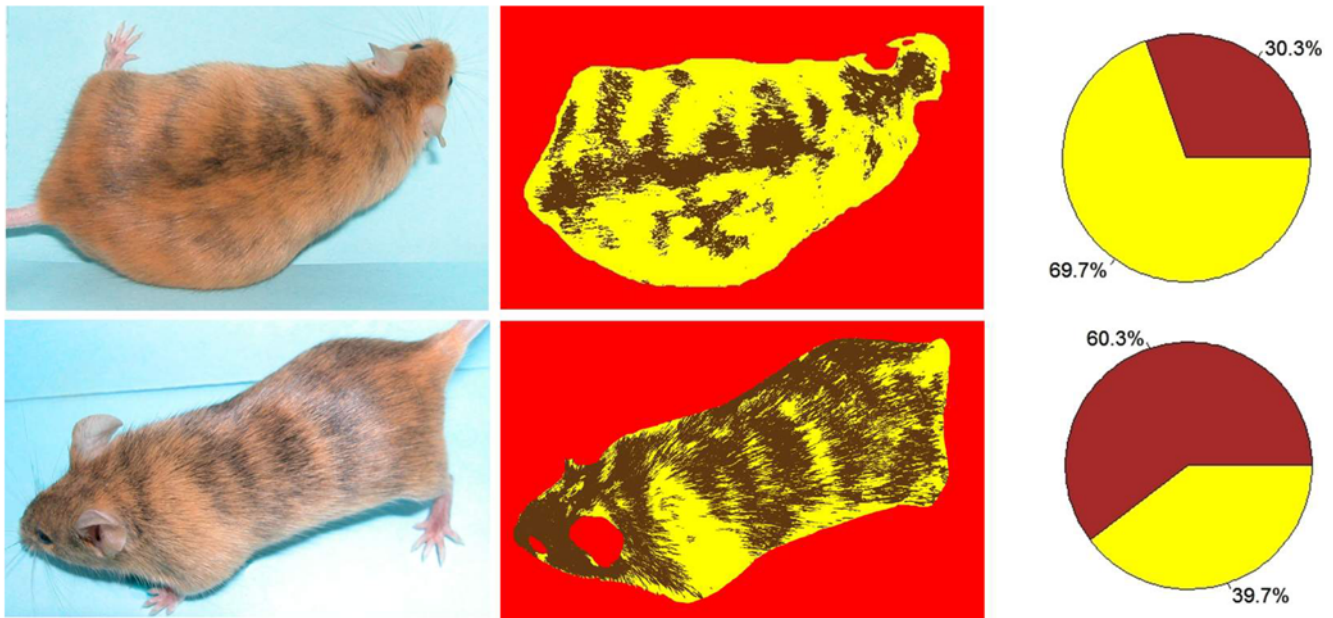


Figure 1. Photographs, colorings, and pie charts of mice. Photographs of mice were processed as described in the text to produce yellow areas of uniform color and agouti areas of uniform color that closely matched yellow and agouti areas on the live mouse. A script was used to generate a pie chart from these areas of uniform color to determine the percentage of yellow and agouti in the mouse. Two examples are shown here.

doi:10.1371/journal.pone.0005414.g001

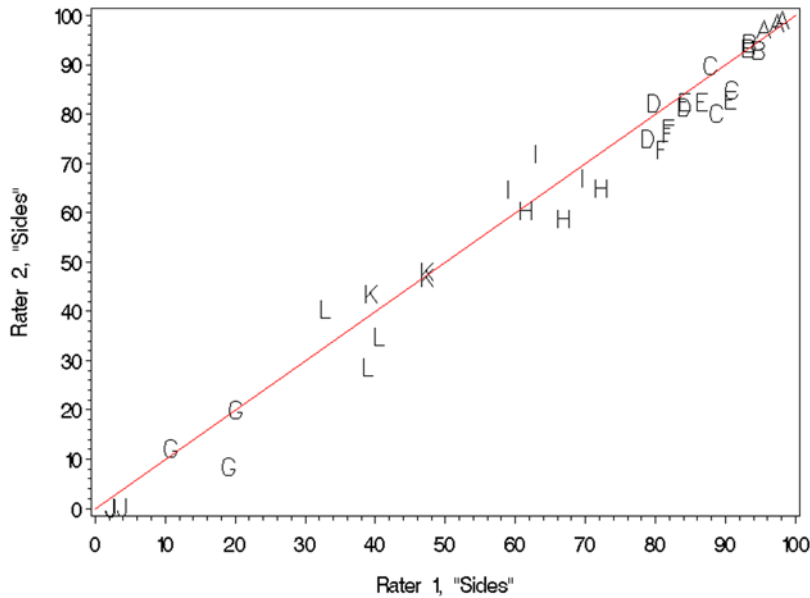


Figure 2. A plot of the percent yellow in the coats of mice evaluated from their sides. Two raters matched colorings on 12 mice on three occasions by examination of each mouse from its left and right sides. Vertical and horizontal axes denote the average percent yellow of the mouse’s left and right sides. Letters denote the identity of the mouse being rated, while the red diagonal line denotes the line of equality between percentages assigned by the two raters.
doi:10.1371/journal.pone.0005414.g002

yellow in the tops of the mice, the mean difference between raters was -0.04% and the 95% limits of agreement were -16.43% to $+16.36\%$, a spread of almost 33 percentage points.

Table 2 shows means and SDs for Top, Sides, and their difference, by rater, time, and both, and after averaging Top and Sides over rater, time, and both. In all cases, the mean of coat color proportion determined from the top was somewhat less than from the sides, ranging from -0.23 to -5.48 percentage points among the different raters and times, and equal to -3.48

percentage points using Top and Sides averaged over both time and rater. However, for all rows of Table 2, the two one-sided 95% confidence limits (TOS CL) on the mean difference between Top and Sides measurements both lie inside equivalence-limit boundaries at $+10$ and -10 percentage points. This establishes via the TOST procedure that the Top and Sides measurements are equivalent to within ± 10 percentage points.

Using coat-color measurements averaged across the three time points, the agreement between raters was high whether evaluated

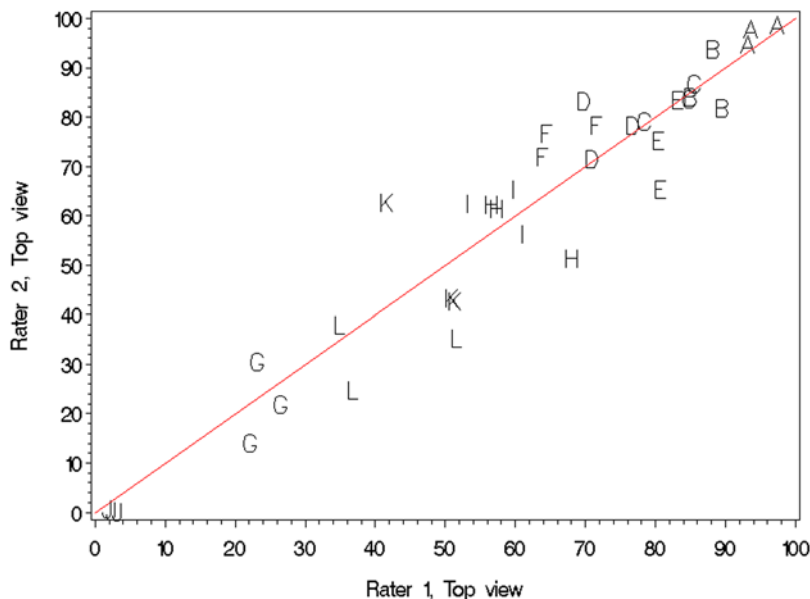


Figure 3. A plot of the percent yellow in the coats of mice evaluated from the top. Two raters matched colorings on 12 mice on three occasions by examination of each mouse from the top. Vertical and horizontal axes denote the percent yellow assigned by each rater. Letters denote the identity of the mouse being rated, while the red diagonal line denotes the line of equality between percentages assigned by the two raters.
doi:10.1371/journal.pone.0005414.g003

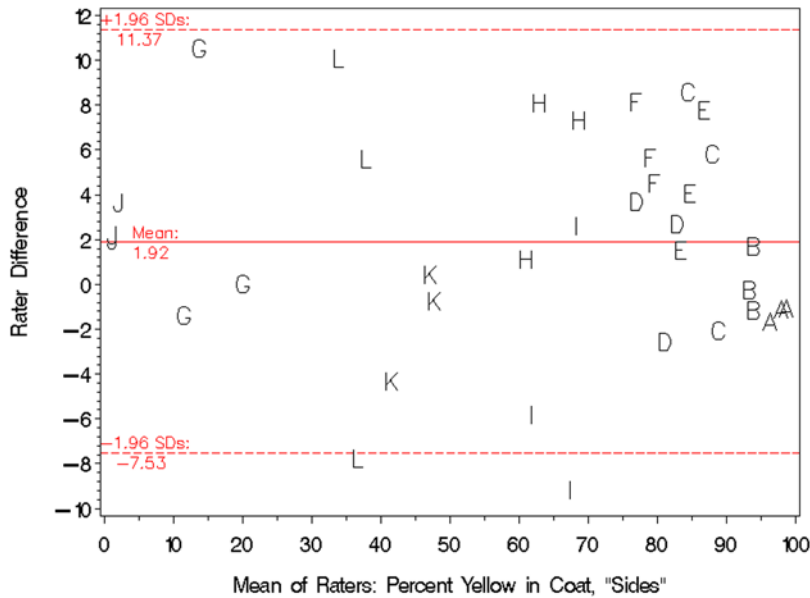


Figure 4. A Bland-Altman plot of the data shown in Figure 2. The horizontal and vertical axes respectively show the mean and difference in coat-color percentages assigned by the raters. Letters denote the identity of the mouse being rated. The solid line depicts the mean of the differences between raters, and the area between the dotted lines delineates the 95% limits of agreement. doi:10.1371/journal.pone.0005414.g004

using photos taken from the sides (ICC = 0.994, Table 3) or from the top (ICC = 0.986, Table 3).

For the method to be reliable, photos of the same mouse should not differ greatly from each other, especially when taken from approximately the same angle. Quantification from colored images was compared for the three days for each rater. The agreement between different days was high for both raters whether

evaluated using photos from the sides (ICC = 0.988 and 0.988, Table 4) or photos from the top (ICC = 0.953 and 0.974, Table 4).

Quantification from colored images of the two raters was compared for the three days on which photographs were taken. The agreement between raters was high for pictures taken on different days, whether from the sides (ICC = 0.980 to 0.994, Table 5) or from the top (ICC = 0.956 to 0.966, Table 6).

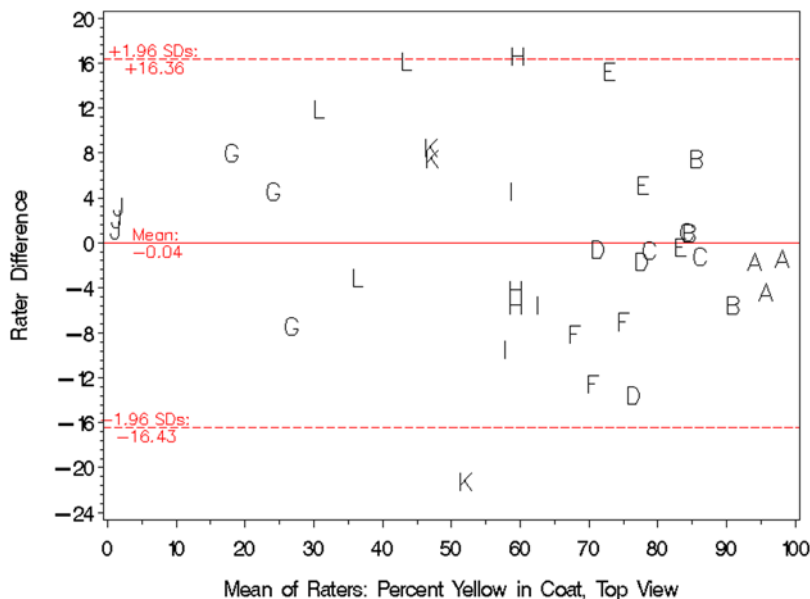


Figure 5. A Bland-Altman plot of the data shown in Figure 3. The horizontal and vertical axes respectively show the mean and difference in coat-color percentages assigned by the raters. Letters denote the identity of the mouse being rated. The solid line depicts the mean of the differences between raters, and the area between the dotted lines delineates the 95% limits of agreement. doi:10.1371/journal.pone.0005414.g005

Table 2. Means and SDs of coat percent yellow, as measured from the top and sides at different times by different raters.

Color Measurement Parameter ^A		Top view	Sides ^B	Difference ^C	
		Mean (SD)	Mean (SD)	Mean (SD)	TOS CL ^D
Time1	Rater1	61.1 (27.9)	63.4 (30.3)	2.38 (6.00)	-0.73-5.49
Time1	Rater2	59.7 (27.8)	62.7 (31.2)	3.00 (7.31)	-0.79-6.79
Time1	averaged	60.4 (27.5)	63.1 (30.7)	2.69 (5.55)	-0.19-5.57
Time2	Rater1	58.4 (27.3)	63.8 (30.6)	5.35 (6.27)	2.09-8.60
Time2	Rater2	60.4 (27.6)	60.6 (32.7)	0.23 (9.33)	-4.60-5.07
Time2	averaged	59.4 (27.2)	62.2 (31.5)	2.79 (6.33)	-0.49-6.07
Time3	Rater1	60.4 (27.8)	63.3 (33.3)	2.89 (8.45)	-1.49-7.27
Time3	Rater2	59.8 (32.8)	61.4 (31.2)	1.52 (6.68)	-1.95-4.98
Time3	averaged	60.1 (30.1)	62.3 (32.2)	2.20 (4.66)	-0.21-4.62
averaged	Rater1	59.9 (27.4)	63.5 (31.3)	3.54 (6.11)	0.37-6.71
averaged	Rater2	60.0 (29.0)	61.6 (31.5)	1.58 (4.60)	-0.80-3.97
averaged	averaged	60.0 (28.1)	62.5 (31.4)	2.56 (4.73)	0.11-5.01

^ACoat colors were measured as percentage yellow by two different raters each at three specific times within a one-week period. Measurements were also averaged by rater, time, or both.

^BSides were calculated as the average of the measurements from the left side and right side.

^CDifference was calculated as Sides-Top. For "averaged" measures, the difference was calculated between the averaged Top and Sides measures.

^DTwo One-Sided 95% Confidence Limits on the mean difference between Top and Sides. Under the Two One-Sided Tests (TOST) procedure, the Top and Sides are equivalent (at 5% alpha) to within ±10 percentage points if the two one-sided 95% confidence limits both lie inside equivalence-limit boundaries located at +10 and -10 percentage points.

doi:10.1371/journal.pone.0005414.t002

Table 3. Inter-rater reliability estimate between the two raters for time-averaged measurement derived from the indicated photographic angle.

Test	ICC ^A	95% CI for ICC
% Yellow (Sides ^B)	0.994	[0.986, 0.998]
% Yellow (Top ^C)	0.986	[0.971, 0.995]

^AIntraclass Correlation Coefficient, type (2,1) in Shrout and Fleiss [25] notation.

^BSides: Average of two measurements per mouse, each derived from photos taken on the left and right sides of the mouse.

^CTop: Single measurement per mouse, derived from photo taken from vertical (top) angle.

doi:10.1371/journal.pone.0005414.t003

Table 4. Intra-rater reliability of each rater measuring the percentage of yellow coat color in each mouse on three different days from the sides^A and from the top.

Angles and Raters	ICC ^B	95% CI for ICC
Sides, Rater 1	0.988	[0.975, 0.996]
Sides, Rater 2	0.988	[0.976, 0.996]
Top, Rater 1	0.974	[0.948, 0.991]
Top, Rater 2	0.953	[0.908, 0.983]

^ASides: Average measure from left- and right-side photos per mouse.

^BIntraclass Correlation Coefficient, type (2,1) in Shrout and Fleiss [25] notation.

doi:10.1371/journal.pone.0005414.t004

Table 5. Inter-rater reliability between the two raters on the individual days, evaluated using the average of measurements from photos taken from the left and right sides.

Test	Measurement	N	ICC ^A	95% CI for ICC
% Yellow	Day 1	12	0.994	[0.988, 0.998]
	Day 2	12	0.980	[0.958, 0.993]
	Day 3	12	0.987	[0.956, 0.996]

^AIntraclass Correlation Coefficient, type (2,1) in Shrout and Fleiss [25] notation.

doi:10.1371/journal.pone.0005414.t005

Table 6. Inter-rater reliability between the two raters on the individual days, evaluated using measurements from photos taken from the top angle only.

Test	Measurement	N	ICC ^A	95% CI for ICC
% Yellow	Day 1	12	0.954	[0.905, 0.984]
	Day 2	12	0.966	[0.929, 0.988]
	Day 3	12	0.956	[0.910, 0.985]

^AIntraclass Correlation Coefficient, type (2,1) in Shrout and Fleiss [25] notation.

doi:10.1371/journal.pone.0005414.t006

Discussion

We describe a method to quantify the coat color percentage in live yellow-agouti mottled mice using digital photographs saved as jpg files. This method uses available, free, established software, the GNU Image Manipulation Program, and a short script written in the R programming language.

Photographs of the same mouse taken on different days within a one-week period yielded very similar results from one photo session to the next when we took reasonable steps (e.g., using the same diffuse light source, same camera with the same settings, same background material and the same photographer) to insure consistency of conditions among sessions. In general, we found little variation among quantifications of pictures taken on different days, indicating that multiple photographs provide little advantage for quantifying coat colors. Two different raters matched colorings to mice, and obtained, on average, very similar coat-color percentages. Each coloring was evaluated by a third individual who screened colorings for a reasonable match. In a few cases (less than 10% of colorings), raters were asked to recolor images. Fayers and Machin [26] recommended that the ICC should exceed 0.90 for techniques that are to be used to assess individuals in clinical practice. Their recommendation clearly applies to techniques for assessing individual mice in laboratory research. Not only did all our ICCs exceed the 0.90 threshold, but all the lower 95% confidence limits on our ICCs exceeded it, thus establishing that our technique has the inter-rater reliability required by Fayers and Machin [26].

Our results indicate that measuring the coat color of mice from only top-view photographs should be sufficient for most purposes. The proportions yellow obtained from top-view photos averaged about 3.5 percentage points lower than those obtained from side-view photographs. This difference is small compared to the time saved from taking and coloring fewer pictures when only top views are used. Application of a well-established statistical equivalence-testing procedure [21] to the difference between top-view and side-view measurements demonstrated that the two were significantly equivalent to within ± 10 percentage points for all combinations of raters, times, and averagings.

Transgenic, knockout and other genetically modified mice are typically made using embryonic stem cells, which are then implanted in an early embryo [7,8]. Highly chimeric mice are used as an indicator of those most likely to carry a germ-line with the desired modification [7,8,27–29]. Similar embryonic stem cell methods have been developed for rats [9,30]. The method we describe here could provide a quantitative means to select mice

and rats with the highest levels of coat color chimerism. In turn, these animals may have the highest levels of germ line chimerism.

Coat color assays provide patterns of epigenetic variation over a wide area of tissue (skin and hair). Further, DNA and other molecular components can be extracted from plucked hairs (including follicles) using hair color as a guide (our unpublished results). Coat color models of epigenetics usually assay the epigenetics of one particular genetic locus and of one tissue (skin). Coat color methods alone do not address the molecular basis of epigenetic regulation. In contrast, molecular methods such as DNA methylation analysis [14–16,31–35] or chromatin immunoprecipitation [36,37] can be applied to many loci and tissues. In addition to skin, large patterns of epigenetic mosaicism probably exist in many other tissues (e.g. liver, brain). Except for patterns that can be detected visually or by immunohistochemistry [33], analyses of epigenetic differences in tissue sections at high spatial resolution is likely to be very labor intensive.

Quantification of color in skins removed from mice has been reported [38]. The method used proprietary software to analyze mouse skins after sacrifice but offered few other details. Although the method was used to determine percentage mottling, the vast majority of mice were less than 50% “black” and the highest percent mottling reported in a large mouse population was about 80% “black”. It is unclear how data from this method would relate to live mice or to the visual appearance of mice, many of which are 80 to 100% agouti. Our method provides quantification that relates directly to the visual appearance of the live animal.

Our method has two main advantages over the widely used ordinal-category methods for live mice. First, it is quantitative and provides data that can be analyzed and compared with other measures with greater precision than ordinal-category methods. Second, it provides a record of the mouse image and how the image was colored. This record can be reevaluated as needed.

We use the yellow agouti mouse model of epigenetic variegation to demonstrate this method. However, it should be useful for many types of studies where coat-color mosaicism or coat-color phenotype is important. This method by which the proportion of coat color on a live mouse can be objectively quantified should allow for precise comparisons of mouse coats within and between studies.

Author Contributions

Conceived and designed the experiments: STO CAC. Performed the experiments: TMR REM WMG K LW. Analyzed the data: STO TMR ERS EAN CAC. Wrote the paper: STO TMR ERS CAC.

References

- Wu M, Rinchik EM, Wilkinson E, Johnson DK (1997) Inherited somatic mosaicism caused by an intracisternal A particle insertion in the mouse tyrosinase gene. *Proc Natl Acad Sci USA* 94: 890–894.
- Wolff GL, Kodell RL, Moore SR, Cooney CA (1998) Maternal epigenetics and methyl supplements affect agouti gene expression in *Ay/a* mice. *FASEB J* 12: 949–957.
- Trut LN (1999) Early canid domestication: the farm-fox experiment. *Am Sci* 87: 160–169.
- Hochedlinger K, Blueloch R, Brennan C, Yamada Y, Kim M, et al. (2004) Reprogramming of a melanoma genome by nuclear transplantation. *Genes Dev* 18: 1875–1885.
- Gaudet F, Rideout WM 3rd, Meissner A, Dausman J, Leonhardt H, et al. (2004) *Dnmt1* expression in pre- and postimplantation embryogenesis and the maintenance of IAP silencing. *Mol Cell Biol* 24: 1640–1648.
- Grahn RA, Lemesch BM, Millon LV, Matisse T, Rogers QR, et al. (2005) Localizing the X-linked orange colour phenotype using feline resource families. *Anim Genet* 36: 67–70.
- Bradley A, Evans M, Kaufman MH, Robertson E (1984) Formation of germ-line chimaeras from embryo-derived teratocarcinoma cell lines. *Nature* 309: 255–256.
- Smith AG (2001) Embryo-derived stem cells: of mice and men. *Annu Rev Cell Dev Biol* 17: 435–462.
- Li P, Tong C, Mehrian-Shai R, Jia L, Wu N, et al. (2008) Germline competent embryonic stem cells derived from rat blastocysts. *Cell* 135: 1299–1310.
- Wolff GL (1978) Influence of maternal phenotype on metabolic differentiation of agouti locus mutants in the mouse. *Genetics* 88: 529–539.
- Mynatt RL, Stephens JM (2001) Agouti regulates adipocyte transcription factors. *Am J Physiol Cell Physiol* 280: C954–961.
- Duhl DM, Vrieling H, Miller KA, Wolff GL, Barsh GS (1994) Neomorphic agouti mutations in obese yellow mice. *Nat Genet* 8: 59–65.
- Wolff GL, Roberts DW, Mountjoy KG (1999) Physiological consequences of ectopic agouti gene expression: the yellow obese mouse syndrome. *Physiol Genomics* 1: 151–163.
- Morgan HD, Sutherland HG, Martin DI, Whitelaw E (1999) Epigenetic inheritance at the agouti locus in the mouse. *Nat Genet* 23: 314–318.
- Cooney CA, Dave AA, Wolff GL (2002) Maternal methyl supplements in mice affect epigenetic variation and DNA methylation of offspring. *J Nutr* 132: 2393S–2400S.
- Waterland RA, Jirtle RL (2003) Transposable elements: targets for early nutritional effects on epigenetic gene regulation. *Mol Cell Biol* 23: 5293–5300.

17. Cooney CA (2006) Maternal Nutrition: Nutrients and Control of Expression. In: Kaput J, Rodriguez RL, eds. *Nutrigenomics: Concepts and Technologies*. Hoboken: John Wiley and Sons. pp 219–254.
18. Cropley JE, Suter CM, Beckman KB, Martin DI (2006) Germ-line epigenetic modification of the murine Avy allele by nutritional supplementation. *Proc Natl Acad Sci USA* 103: 17308–17312.
19. Dolinoy DC, Weidman JR, Waterland RA, Jirtle RL (2006) Maternal genistein alters coat color and protects Avy mouse offspring from obesity by modifying the fetal epigenome. *Environ Health Perspect* 114: 567–572.
20. R Development Core Team (2008) R: A language and environment for statistical computing. R Foundation for Statistical Computing. Vienna, Austria ISBN 3-900051-07-0, URL <http://www.R-project.org>.
21. Schuirmann DJ (1987) A comparison of the two one-sided tests procedure and the power approach for assessing the equivalence of average bioavailability. *J Pharmacokinetic Biopharm* 15: 657–680.
22. Bland JM, Altman DG (1986) Statistical methods for assessing agreement between two methods of clinical measurement. *Lancet* 1: 307–310.
23. Bland JM, Altman DG (2007) Agreement between methods of measurement with multiple observations per individual. *J Biopharm Stat* 17: 571–582.
24. Van Belle G (2002) Assess agreement in terms of accuracy, scale differential, and precision. In: Van Belle G, ed. *Statistical Rules of Thumb*. New York: John Wiley & Sons, Inc. pp 65–68.
25. Shrout PE, Fleiss JL (1979) Intraclass correlations: uses in assessing rater reliability. *Psychol Bull* 86: 420–428.
26. Fayers PM, Machin D (2000) *Quality of Life: Assessment, Analysis, and Interpretation*. New York: John Wiley.
27. Schwartzberg PL, Goff SP, Robertson EJ (1989) Germ-line transmission of a c-abl mutation produced by targeted gene disruption in ES cells. *Science* 246: 799–803.
28. Koller BH, Hagemann LJ, Doetschman T, Hageman JR, Huang S, et al. (1989) Germ-line transmission of a planned alteration made in a hypoxanthine phosphoribosyltransferase gene by homologous recombination in embryonic stem cells. *Proc Natl Acad Sci USA* 86: 8927–8931.
29. Ware CB, Siverts LA, Nelson AM, Morton JF, Ladiges WC (2003) Utility of a C57BL/6 ES line versus 129 ES lines for targeted mutations in mice. *Transgenic Res* 12: 743–746.
30. Buehr M, Meek S, Blair K, Yang J, Ure J, et al. (2008) Capture of authentic embryonic stem cells from rat blastocysts. *Cell* 135: 1287–1298.
31. Castilho A, Neves N, Rufini-Castiglione M, Viegas W, Heslop-Harrison JS (1999) 5-Methylcytosine distribution and genome organization in triticales before and after treatment with 5-azacytidine. *J Cell Sci* 112(Pt 23): 4397–4404.
32. Leakey TI, Zielinski J, Siegfried RN, Siegel ER, Fan CY, et al. (2008) A simple algorithm for quantifying DNA methylation levels on multiple independent CpG sites in bisulfite genomic sequencing electropherograms. *Nucleic Acids Res* 36: e64.
33. Koji T, Kondo S, Hishikawa Y, An S, Sato Y (2008) In situ detection of methylated DNA by histo endonuclease-linked detection of methylated DNA sites: a new principle of analysis of DNA methylation. *Histochem Cell Biol* 130: 917–925.
34. Brunner AL, Johnson DS, Kim SW, Valouev A, Reddy TE, et al. (2009) Distinct DNA methylation patterns characterize differentiated human embryonic stem cells and developing human fetal liver. *Genome Res*: Mar 9 Epub;doi: 10.1101/gr.088773.108.
35. Yan PS, Potter D, Deatherage DE, Huang TH, Lin S (2009) Differential methylation hybridization: profiling DNA methylation with a high-density CpG island microarray. *Methods Mol Biol* 507: 89–106.
36. Komashko VM, Acevedo LG, Squazzo SL, Iyengar SS, Rabinovich A, et al. (2008) Using ChIP-chip technology to reveal common principles of transcriptional repression in normal and cancer cells. *Genome Res* 18: 521–532.
37. Visel A, Blow MJ, Li Z, Zhang T, Akiyama JA, et al. (2009) ChIP-seq accurately predicts tissue-specific activity of enhancers. *Nature* 457: 854–858.
38. Badger TM, Ronis MJ, Wolff G, Stanley S, Ferguson M, et al. (2008) Soy protein isolate reduces hepatosteatosis in yellow Avy/a mice without altering coat color phenotype. *Exp Biol Med (Maywood)* 233: 1242–1254.