



Published in final edited form as:

*J Invest Dermatol.* 2008 January ; 128(1): 79–86. doi:10.1038/sj.jid.5701011.

## Characterization of a Hapten-Induced, Murine Model with Multiple Features of Atopic Dermatitis: Structural, Immunologic, and Biochemical Changes following Single *Versus* Multiple Oxazolone Challenges

Mao-Qiang Man<sup>1,2,5</sup>, Yutaka Hatano<sup>1,5</sup>, Seung H. Lee<sup>3</sup>, Mona Man<sup>1</sup>, Sandra Chang<sup>1</sup>, Kenneth R. Feingold<sup>1</sup>, Donald Y.M. Leung<sup>4</sup>, Walter Holleran<sup>1</sup>, Yoshikazu Uchida<sup>1</sup>, and Peter M. Elias<sup>1</sup>

<sup>1</sup> *Dermatology and Medical (Metabolism) Services, Veterans Affairs Medical Center, and Departments of Dermatology & Medicine, University of California, San Francisco, California, USA*

<sup>2</sup> *Dalian Skin Disease Hospital, Dalian, PR China*

<sup>3</sup> *Department of Dermatology, Yonsei University School of Medicine, Seoul, Korea*

<sup>4</sup> *Department of Pediatrics, National Jewish Medical and Research Center, Denver, Colorado, USA*

### Abstract

Atopic dermatitis (AD) is a chronic dermatosis bearing clinical, histological, and immunologic similarities to chronic allergic contact dermatitis (ACD). AD shows a Th2 cell-dominant inflammatory infiltrate, elevated serum IgE levels, a permeability barrier abnormality, and *Staphylococcus aureus* colonization. Repeated hapten challenges reportedly produce a Th2-like hypersensitivity reaction (Th2-like HR). Here, 9–10 challenges with oxazolone (Ox) to hairless mice also produced a chronic Th2-like HR. Permeability barrier function and expression of differentiation proteins, filaggrin, loricrin, and involucrin, became abnormal. CRTH-positive Th2-dominant inflammatory infiltrate, with increased IL-4 expression, and a large increase in serum IgE levels were observed. The barrier abnormality was associated with decreased stratum corneum (SC) ceramide content and impaired lamellar body secretion, resulting in abnormal lamellar membranes, as in human AD. Furthermore, as in human AD, epidermal serine protease activity in SC increased and expression of two lamellar body-derived antimicrobial peptides, CRAMP and mBD3, declined after Ox challenges, paralleling the decrease of their human homologues in AD. Thus, multiple Ox challenges to normal murine skin produce a chronic Th2-like HR, with multiple features of human AD. Because of its reproducibility, predictability, and low cost, this model could prove useful for evaluating both pathogenic mechanisms and potential therapies for AD.

### INTRODUCTION

Over the last decade, a variety of murine models have been developed and characterized that display certain features of atopic dermatitis (AD). These models include: (1) spontaneous mutants, such as the Nc/Nga mouse (Matsuda *et al.*, 1997; Aioi *et al.*, 2001); (2) transgenic

Correspondence: Dr Peter M. Elias, Dermatology Service (190), VA Medical Center, 4150 Clement Street, San Francisco, California 94121, USA. E-mail: E-mail: eliasp@derm.ucsf.edu.

<sup>5</sup>These authors contributed equally to this work, and shall be considered as co-first authors

### CONFLICT OF INTEREST

The authors state no conflict of interest.

mice that either over- or under-express selective cytokines, such as IL-4, IL-18, or thymic stromal lymphopoietic factor (Chan *et al.*, 2001b; Konishi *et al.*, 2002; Chen *et al.*, 2005); (3) mice genetically-engineered to over-express stratum corneum (SC) chymotryptic enzyme (kallikrein 7) (Hansson *et al.*, 2002); and (4) mice challenged repeatedly with applications of soluble or aerosol haptens, such as ovalbumen (Savinko *et al.*, 2005), mite antigens (Matsuoka *et al.*, 2003; Gao *et al.*, 2004; Kang *et al.*, 2006), or trinitrochlorobenzene (Matsumoto *et al.*, 2004). While repeated hapten challenges elicit an AD-like dermatosis with some features of AD (Matsumoto *et al.*, 2004), an analogous process occurs only rarely in otherwise normal humans (Werfel *et al.*, 1997), perhaps because barrier function is superior in human epidermis. The importance of a primary inherited defect in the barrier, with subsequent hapten ingress, for the pathogenesis of AD is becoming increasingly accepted, because inherited mutations in the gene that encodes the SC structural protein, filaggrin, have been reported in a plurality of European kindreds with AD (Marenholz *et al.*, 2006; Palmer *et al.*, 2006; Sandilands *et al.*, 2006; Smith *et al.*, 2006; Weidinger *et al.*, 2006).

To date, hapten-induced, chronic ACD models, although having the unique advantages of being convenient, reproducible, and inexpensive, have not been sufficiently characterized to ascertain whether they are true analogues of AD. While the trinitrochlorobenzene model displays certain clinical and immunologic features of human AD (Matsumoto *et al.*, 2004; Matsukura *et al.*, 2005; Tagami and Kikuchi, 2006), whether epidermal structural, functional, and lipid biochemical abnormalities, characteristic of human AD, occur in this model, is not known. Without these types of essential data, hapten-induced models remain of limited use for further studies on either AD pathogenesis, or for the evaluation of barrier-based, therapeutic interventions of potential utility in AD. We describe here another hapten-induced chronic Th2-like hypersensitivity reaction (HR) model, in which simple applications of the sensitizer, oxazolone (Ox), previously utilized to elicit ACD (Sheu *et al.*, 2002; Fowler *et al.*, 2003), was utilized to generate a chronic Th2-like hypersensitivity reaction (Th2-like HR) model. Following 10 Ox challenges, a dermatosis emerges with not only the immunologic but also with epidermal structural, functional, and biochemical abnormalities that parallel human AD. Availability of this thoroughly characterized model should facilitate future studies on both AD pathogenesis, as well as the evaluation of emerging therapies for AD.

## RESULTS

### Repeated Ox applications provoke a pruritic dermatosis with increased epidermal hyperplasia and aberrant epidermal differentiation

While a single Ox challenge to hairless mouse skin produces an acute ACD-like, erythematous and edematous dermatosis over 6–12 hours (Figure S1; see also Sheu *et al.*, 2002; Fowler *et al.*, 2003), 9–10 Ox challenges over 22–25 days provoked a persistent, chronic dermatosis with evidence of moderate-to-severe pruritus (Figure S1).

Whereas single Ox challenges produce mild epidermal hyperplasia, this feature became more prominent with successive challenges (Figure S2), so that by 10 applications mean epidermal thickness was  $2.06 \pm 0.05$  vs  $0.67 \pm 0.03$  in vehicle-treated controls ( $P < 0.0001$ ). The development of epidermal hyperplasia could be attributed to a marked increase in DNA synthesis, demonstrated by increased numbers of proliferating cell nuclear antigen+ cells in the basal and first suprabasal epidermal layers (Figure S2). Finally, epidermal hyperplasia was accompanied by a prominent inflammatory infiltrate, even after one Ox challenge, but inflammation became more apparent after 10 Ox challenges (Figure S2). In parallel with the emergence of epidermal hyperplasia and inflammation, expression of three structural protein markers of differentiation (loricrin, involucrin, filaggrin) either declined in the outer nucleated layers, or extended proximally into suprabasal cell layers with repeated Ox challenges (Figure S3).

### Abnormal epidermal function appears only after repeated hapten applications

We next assessed whether progression from acute to chronic ACD is associated with alterations in epidermal functional parameters, including changes in permeability barrier homeostasis, SC hydration, and SC acidification. While all of these functions remain normal after a single Ox challenge, basal permeability barrier homeostasis, assessed as rates of transepidermal water loss (TEWL) increased markedly after 10 Ox challenges (Figure 1c, >10-fold elevation;  $P < 0.0001$ ). At this time point, SC hydration also declined significantly (Figure 1a;  $P < 0.01$ ), while skin surface pH increased by about  $\frac{1}{2}$  a unit (Figure 1b;  $P < 0.01$ ). Finally, barrier recovery kinetics, assessed as the rate of decline in TEWL over time, either accelerated modestly or remained unchanged in repeatedly Ox-challenged skin sites (Figure 1d), as in human AD (Seidenari and Giusti, 1995).

### SC lipid abnormalities correlate with the barrier abnormality in Ox-challenged mice

Human AD is characterized by a decline in two key SC lipids, ceramides (Cers), and free fatty acids, with a further, selective decline in certain Cer species, most notably Cer 3 (Di Nardo *et al.*, 1998; Macheleidt *et al.*, 2002). Although total Cer content of SC in 10 Ox-challenged mice did not reduced, total free fatty acid content declined and that of cholesterol increased, as in human AD (Figure 2). Moreover, one of the five individual Cer species (murine SC displays only five Cer species because of lesser variation in sphingoid base and *N*-acyl fatty acid hydroxylation), Cer 3 declined significantly *versus* vehicle-treated controls (Figure 2;  $P < 0.001$ ), as observed repeatedly in human AD (Di Nardo *et al.*, 1998; Macheleidt *et al.*, 2002).

### Ox-challenged mice display abnormalities in lamellar body secretion and post-secretory, lamellar membrane organization

The epidermis of human AD displays abnormalities in both lamellar body secretion (Fartasch *et al.*, 1992) and extracellular lamellar bilayer structure (Chamlin *et al.*, 2002), findings that correlate with reported lipid abnormalities (Chamlin *et al.*, 2002). While both lamellar body density and internal contents appeared normal in repeatedly Ox-challenged mice, secretion was impaired, as evidenced by retention of organelles in the peripheral cytosol (Figure 3a), coupled with reduced secretion at the stratum granulosum–SC interface (Figure 3c). Since considerable lamellar body contents become entombed within the corneocyte cytosol (Figure 3d, open arrows), rather than secreted, these contents would be unavailable to form lamellar membranes; hence, the decreased numbers of lamellar bilayers in repeated Ox-challenged mice (Figure 3d), as in human AD.

### Ultrastructural evidence of impaired SC cohesion in Ox-challenged mice

The desquamation abnormality in repeatedly Ox-challenged mice could result, in part, from epidermal hyperplasia (Figure S2), but it also correlated here with multiple foci in the lower SC where corneocytes appeared to detach prematurely (Figure 3c). Extensive separation occurred both between adjacent corneocytes (Figure 3c, asterisks), and between the SC and the underlying nucleated cell layers (Figure 3c, open arrows). These ultrastructural findings are consistent with the visible scale in these mice, increased serine protease (SP) activity in these mice (see below), and the decreased SC cohesion in human AD (Cork *et al.*, 2006).

### SP activity increases in Ox-challenged mice

The elevation in surface pH that follows repeated Ox challenges (Figure 1b) could result in increased SP activity (Hachem *et al.*, 2003, 2005a). Such pH-induced changes in SP activity could, in turn, account for the abnormal corneocyte cohesion in Ox-challenged mice through degradation of corneodesmosomes. To assess this potential pathomechanism, we next assessed changes in SP activity and localization after Ox challenges by *in situ* zymography. SP activity

was low both under basal conditions (Figure S4) and after single Ox challenges (Figure S4), and was restricted to a narrow region of the SC. In contrast, after 10 Ox challenges, SP activity increased throughout the SC, further impinging on the outer nucleated layers (Figure S4). The increase in SP activity correlates with the observed increase in pH of SC (c.f., Figure 1), providing a mechanistic basis for the alterations in desquamation in these mice.

### Ox-challenged mice develop abnormalities in innate and adaptive immunity

We next determined whether repeatedly Ox-challenged mice develop an immunophenotype that is similar to human AD. After a single Ox challenge, the dermis displayed a modest inflammatory infiltrate (Figure S2), dominated by postglanin D receptor (CRTH2)-negative lymphocytes (Figure 4b) and most became CRTH2 positive (Figure 4c), with an increased density of mast cells, but few eosinophils (Figure S2). Over subsequent challenges, the lymphocyte-dominated infiltrate increased progressively, with some lymphocytes appearing to invade the overlying epidermis (Figure S2). The density of eosinophils in the dermis of 10 Ox-challenged mice also increased significantly ( $139.04 \pm 28.13$  vs  $8.02 \pm 5.71$  in vehicle-treated, and  $29.41 \pm 18.46$  after a single challenge;  $P < 0.005$  for 10 vs 1 challenge). In addition, immunostaining for IL-4 also markedly increased in the dermis of 10x Ox-challenged mice (Figure S5). Finally, the increase in Th2 immunophenotype was paralleled by a progressive increase in serum IgE levels. While mean serum IgE levels were  $29.7 \pm 5.7$  after one Ox challenge, they increased to  $3,460 \pm 734$  vs  $20.2 \pm 3.5$  in 10x vehicle-treated mice ( $P < 0.002$ ;  $n=5$  each). These results show that repeated Ox challenges yield a predominant Th2 phenotype, prominent eosinophils, and highly elevated IgE levels, mirroring humans with “extrinsic” AD.

In addition to the above-described changes in adaptive immunity, Ox-challenged mice rapidly developed alterations in antimicrobial peptide expression. While both the cathelicidin carboxyfragment, LL-37, and the human  $\beta$ -defensin 2, hBD2, typically upregulate during inflammation and/or wound healing (Sorensen *et al.*, 2003; Butmarc *et al.*, 2004), both of these peptides fail to upregulate in human AD (Ong *et al.*, 2002b). Hence, we next assessed changes in expression of the murine analogues of LL-37 and hBD2 (i.e., cathelin-related antimicrobial peptide (CRAMP) and mBD3, respectively) after one vs 10 Ox challenges. Basal protein levels of both peptides were demonstrable in the outer nucleated layers in untreated murine epidermis (Figure 5a and d), but both CRAMP and mBD3 immunostainable proteins declined markedly after a single Ox challenge (Figure 5b and e), a decrease that was sustained after 10 Ox challenges (Figure 5c and f). Thus, repeated hapten challenges induce changes in two innate immunity peptides that parallel human AD (Ong *et al.*, 2002b).

## DISCUSSION

The striking increase in the incidence of atopic disorders, including AD, observed in recent decades, has been ascribed to the migration of populations from rural to urban areas, where lack of early exposure to a variety of microbes purportedly results in reduced immune tolerance. Although the “hygiene hypothesis” may have some validity for mucosal atopy, the increased prevalence of AD in industrialized, urban areas instead results from increased exposure to indoor aeroallergens, such as dust mites (Sager *et al.*, 1992; Matsuoka *et al.*, 2003; Kiank *et al.*, 2006), and life-style changes coupled with frequent bathing, which could further degrade the barrier (Cork *et al.*, 2006). Moreover, aeroantigens, responsible for mucosal atopy, can also gain access across the (defective) skin barrier in AD (Sager *et al.*, 1992). Furthermore, early and frequent use of topical glucocorticoids, as well as increased psychologic stress, which increases endogenous GC, may further degrade the barrier (Denda and Tsuchiya, 2000; Kao *et al.*, 2003; Choi *et al.*, 2005a, 2006), thereby increasing disease susceptibility.

Until recently, research on the etiopathogenesis of AD has focused primarily on immunologic abnormalities, including the potential provocative role of sensitized dendritic cells (reviewed

in Novak and Bieber (2005), increased IgE production and/or receptor expression (Boguniewicz *et al.*, 2006), as well as the Th2 immunophenotype (Grewe *et al.*, 1998; Leung *et al.*, 2003, 2004), accompanied by production of cytokines that favor allergic responses and secondary pathogen colonization (Homey *et al.*, 2006). Without discounting the role of immunologic influences in the development of AD, evidence is accumulating that the primary abnormality in AD could result from inherited defects in SC structure and function (reviewed in Segre (2006). Inherited barrier abnormalities may predispose to AD by facilitating antigen egress. Hence, the focus has shifted, quite appropriately, from a primarily immunologic (“inside-outside”) to a more-probable, “outside-inside” paradigm for AD pathogenesis (eg, Elias *et al.*, 1996, 1996a, 1996b, 1999; Elias and Feingold, 1999). Accordingly, it becomes increasingly important to identify and characterize animal models that allow further investigations into the role of immunologic and skin barrier abnormalities in AD pathogenesis (Table S1).

The best-characterized murine model, the Nc/Nga mouse, develops a full panoply of atopic features, including a permeability barrier abnormality linked to Cer deficiency (Aioi *et al.*, 2001). AD-like disease only develops when mice are housed under conventional, ambient (i.e., “dirty”), rather than sun protection factor conditions, but both environmental and topical haptens can provoke chronic Th2-like HR, even when Nc/Nga mice are housed in a sun protection factor facility (Matsuoka *et al.*, 2003; Gao *et al.*, 2004; Kang *et al.*, 2006). Although the specific abnormality in Nc/Nga mice remains unknown, they display mutations on chromosome 9, linked to increased IgE production, as well as Th2-type T cells, bearing CCR-4, within chronic Th2-like HR lesions (Matsuoka *et al.*, 2003; Gao *et al.*, 2004; Kang *et al.*, 2006). Coupled with further disadvantages of high costs, special housing requirements, and undependable elicitation of skin lesions, these mice have distinct disadvantages as an AD model. Likewise, published transgenic models, such as *Klk7* (Brattsand and Egelrud, 1999) and *IL-4* (Chan *et al.*, 2001a, b) overexpressing, and *IL-18* transgenic mice (Konishi *et al.*, 2002), while potentially useful for dissecting specific etiopathogenic steps, are of limited use for assessing alternate therapeutic approaches for AD, and none of these 3 models is commercially-available.

Prompted by the urgent need to develop a convenient, reproducible model, relevant for studies on both AD pathogenesis and assessment of alternate therapeutic approaches, we turned to a hapten-induced model, already employed to assess pathogenesis and potential therapies of acute allergic contact dermatitis (AACD), the Ox-sensitized mouse (Nakae *et al.*, 2001; Sheu *et al.*, 2002; Fowler *et al.*, 2003). We show here that with repeated hapten challenges over a 2- to 3-week period, this model shifts from typical delayed-type hypersensitivity, into a more chronic dermatosis, with multiple features of AD (Table S1), including the characteristic barrier (Seidenari and Giusti, 1995) and lipid abnormalities (Imokawa *et al.*, 1991; Bleck *et al.*, 1999). The short time required for disease induction, low costs, and reproducibility of disease expression are yet additional advantages of this model. Both the timing of disease development, and the cutaneous features of our model, are strikingly similar to the dermatosis that follows repeated applications of trinitrochlorobenzene (Kitagaki *et al.*, 1995; Matsukura *et al.*, 2005). Although such trinitrochlorobenzene mice demonstrate a shift from a Th1 to Th2 immunophenotype at sites of hapten application, neither epidermal structure, function, nor lipid biochemistry have been assessed in this model. Our studies show that initial hapten challenge, sufficient to elicit AACD, occurs while key epidermal functions still remain normal, emphasizing that inflammation alone does not suffice to produce epidermal functional abnormalities. Further hapten challenges, however, skew the AACD to a chronic ACD dermatosis, with a full panoply of features of AD, accompanied by the development of significant barrier dysfunction, likely allowing still more allergen to traverse the SC. The lesser competence of the permeability barrier in AD skin likewise presumably accounts for hapten ingress, sufficient to skew ACD toward chronic ACD, with features of AD. Although these

results further underscore the potential importance of inherited abnormalities of the SC structural protein, filaggrin (Palmer *et al.*, 2006), and/or SP/anti-protease polymorphisms (Walley *et al.*, 2001; Vasilopoulos *et al.*, 2004) as primary provocateurs of AD, repeated hapten challenge can lead to Th2 cell activation, which could also reduce barrier function (Hatano *et al.*, 2005), linking immunologic changes to skin barrier abnormalities.

## MATERIALS AND METHODS

### Materials

Female hairless mice (hr/hr), aged 6–8 weeks old, were purchased from Charles River laboratories (Wilmington, MA) and fed mouse diet (Ralston-Purina Co., St Louis, MO) and water *ad libitum*. Ethanol and petroleum ether were purchased from Fisher Scientific (Fairlane, NJ). Ox, EDTA and trypsin were purchased from Sigma Chemical Co. (St Louis, MO). Affinity-purified, rabbit anti-mouse antibodies to loricrin, involucrin, and filaggrin were purchased from BabCo (Richmond, CA), and rabbit anti-mouse antibody against the postglanin D receptor, CRTH2/DP2, was from Cayman Chemical (Ann Arbor, MI). CRAMP antibody was a gift from Dr Richard Gallo, UCSD, and the mBD3 antibody was from Alpha Diagnostic (San Antonio, TX). Biotinylated goat anti-rabbit IgG antibody was purchased from Vector Lab (Burlingame, CA).

### Experimental protocols and functional studies

All animal procedures were approved by the Animal Studies Subcommittee of the San Francisco Veterans Administration Medical Center and performed in accordance with their guidelines. One group of animals was sensitized by one topical treatment with 10  $\mu$ l of 5% Ox, while the ethanol-treated vehicle group served as the control. A week later, the Ox-treated group was treated topically with 60  $\mu$ l of 0.1% Ox on both flanks, once every other day for an additional 2 weeks, with ethanol alone serving again as vehicle control. Both before challenge and at the end of the treatment period, basal TEWL, measured with an electrolytic water analyzer (Meeco, Warrington, PA), and SC hydration, assessed as capacitance, with a Corneometer CM820 (Courage & Khazaka, Germany), as described previously (Choi *et al.*, 2005b).

### Immunohistochemistry and immunofluorescence

Immunohistochemical staining for assessment of changes in epidermal differentiation was performed as described earlier (Demerjian *et al.*, 2006). Briefly, 5  $\mu$ m paraffin sections were incubated with the primary antibodies overnight at 4°C. After washes  $\times$ 3, sections were incubated with the secondary antibody for 30 minutes. Staining was detected with ABC-peroxidase kit from Vector Lab, and sections were then counterstained with hematoxylin. For immunohistochemistry for proliferating cells, changes in overall morphology were visualized after hematoxylin and eosin staining of 5  $\mu$ m paraffin-enabled sections, and proliferating cells were detected by proliferating cell nuclear antigen staining. Briefly, 5  $\mu$ m paraffin sections were incubated with biotinylated monoclonal antibody against proliferating cell nuclear antigen (CalTag Laboratories, Burlingame, CA) overnight at 4°C, and staining was detected by the ABC-peroxidase method (Vector).

Immunofluorescence was used to evaluate changes in T helper cell subpopulation expression. 5  $\mu$ m frozen were incubated with the rabbit anti-mouse CRTH2/DP2 antibody overnight at 4°C, followed by incubation with fluorescence conjugated goat anti-rabbit antibody for 30 minutes at room temperature. Both CRAMP and mBD3 protein levels were assessed to determine whether antimicrobial peptide expression changes in epidermis, as described for human AD (Ong *et al.*, 2002a, b). For immunohistochemical staining for IL-4, we employed the method of Fan *et al.* (2001). Sections were examined with either a Zeiss fluorescence

microscope (Jena, Germany), or on a confocal microscope, and digital images were captured with AxioVision software (Carl Zeiss Vision, Munich, Germany).

### Eosinophil density measurement

The areas of dermis in hematoxylin and eosin-stained sections first were quantitated in a digital microscope equipped with AxioVision software. The depth of the measured areas extended to  $\approx 170 \mu\text{m}$  below the basement membrane. The density of eosinophils was then expressed as the number of eosinophil per  $\text{mm}^2$  ( $n=15$  for  $10\times$  challenged,  $n=12$  for single challenge, and  $n=11$  for vehicle-treated samples).

### SP activity

SP activity was assessed in freshly obtained skin samples by *in situ* zymography, as previously described (Hachem *et al.*, 2003, 2005b).  $5 \mu\text{m}$  frozen sections were incubated with BODIPY-FI0-casain for 2 hours at  $37^\circ\text{C}$ . After  $3\times$  washing with 1% Tween 20 solution, sections were counter-stained with propidium iodide for 1 minute. Sections then were examined with the Zeiss or confocal microscopes, as above.

### Serum IgE measurements

Blood samples were collected from mice tails after one Ox challenge, 10 Ox challenges, as well as in controls after one and 10 vehicle treatments alone. Serum IgE concentration was determined with a mouse IgE ELISA quantitation kit from Bethyl Laboratories (Montgomery, TX), following instructions provided by the manufacturer.

### SC lipid content

After 2 weeks of treatment with Ox or vehicle, fresh SC sheets were collected after separation of dermis and epidermis by 10mM EDTA preincubations, followed by trypsinization, as described (Mao-Qiang *et al.*, 1996). SC lipids were extracted by Bligh–Dyer solvents, and quantitated both as total lipids per mg protein and mg dry SC weight. Lipid extracts were further fractionated into cholesterol, free fatty acid, and Cer subfractions by high-performance thin layer chromatography, as described previously (Uchida and Hamanaka, 2006).

### Electron microscopy

Skin biopsies of both vehicle and Ox-treated mice were fixed in Karnovsky's fixative overnight, and post-fixed with either 0.25% ruthenium tetroxide or 1% aqueous osmium tetroxide, containing 1.5% potassium ferrocyanide, as described previously (Hou *et al.*, 1991). Ultrathin sections were examined using an electron microscope (Zeiss 10A, Carl Zeiss, Thornwood, NY) operated at 60 kV.

Data are expressed as means  $\pm$  SEM. A two-tailed Student's *t*-test was used to determine significant differences, and a further analysis of variance analysis was performed when three or more groups were compared.

## Supplementary Material

Refer to Web version on PubMed Central for supplementary material.

## Acknowledgements

This study was supported by National Institutes of Health grants AR 050629, AR 19098 and PO39448, the Medical Research Service, Department of Veterans Affairs Medical Center.

## Abbreviations

<b>ACD</b>	allergic contact dermatitis
<b>AD</b>	atopic dermatitis
<b>Cers</b>	ceramides
<b>HR</b>	hypersensitivity reaction
<b>SC</b>	stratum corneum
<b>SP</b>	serine protease
<b>TEWL</b>	transepidermal water loss
<b>Th2-like HR</b>	Th2-like hypersensitivity reaction

## References

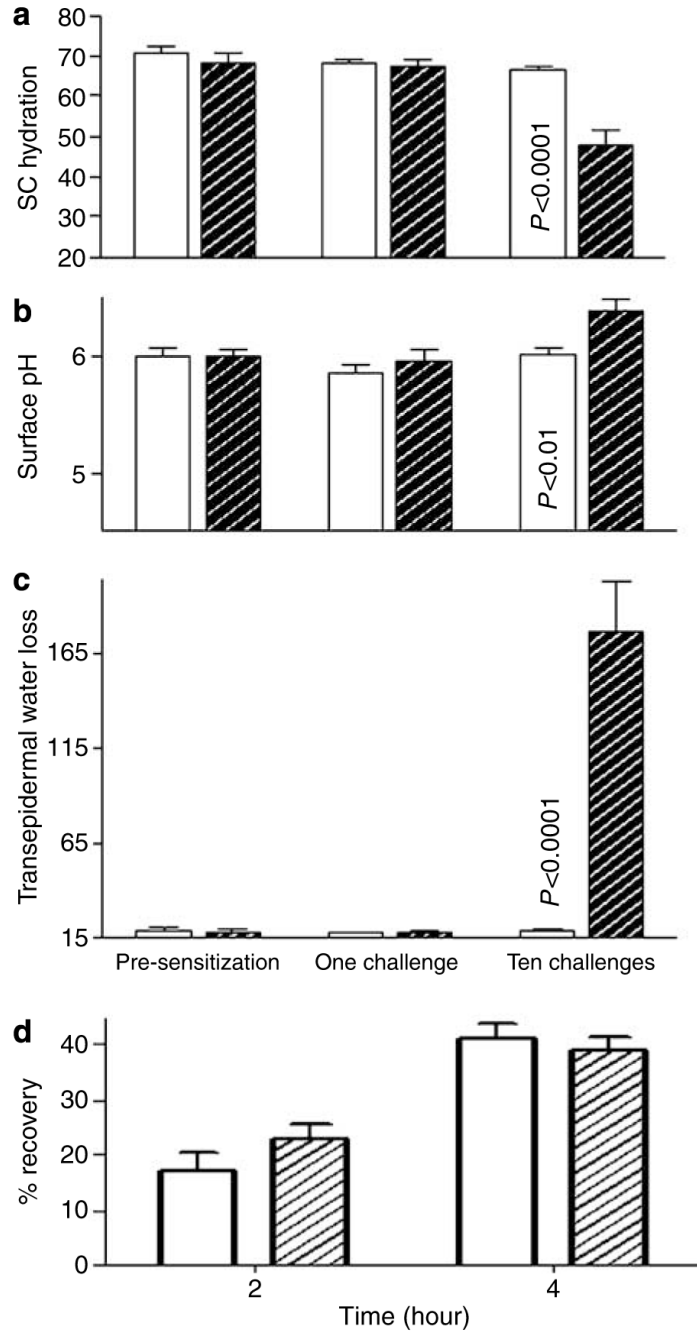
- Aioi A, Tonogaito H, Suto H, Hamada K, Ra CR, Ogawa H, et al. Impairment of skin barrier function in NC/Nga Tnd mice as a possible model for atopic dermatitis. *Br J Dermatol* 2001;144:12–8. [PubMed: 11167677]
- Bleck O, Abeck D, Ring J, Hoppe U, Vietzke JP, Wolber R, et al. Two ceramide subfractions detectable in Cer(AS) position by HPTLC in skin surface lipids of non-lesional skin of atopic eczema. *J Invest Dermatol* 1999;113:894–900. [PubMed: 10594727]
- Boguniewicz M, Schmid-Grendelmeier P, Leung DY. Atopic dermatitis. *J Allergy Clin Immunol* 2006;118:40–3. [PubMed: 16815136]
- Brattsand M, Egelrud T. Purification, molecular cloning, and expression of a human stratum corneum trypsin-like serine protease with possible function in desquamation. *J Biol Chem* 1999;274:30033–40. [PubMed: 10514489]
- Butmarc J, Yufit T, Carson P, Falanga V. Human beta-defensin-2 expression is increased in chronic wounds. *Wound Repair Regen* 2004;12:439–43. [PubMed: 15260809]
- Chamlin SL, Kao J, Frieden IJ, Sheu MY, Fowler AJ, Fluhr JW, et al. Ceramide-dominant barrier repair lipids alleviate childhood atopic dermatitis: changes in barrier function provide a sensitive indicator of disease activity. *J Am Acad Dermatol* 2002;47:198–208. [PubMed: 12140465]
- Chan JC, Duszczyszyn DA, Castellino FJ, Ploplis VA. Accelerated skin wound healing in plasminogen activator inhibitor-1-deficient mice. *Am J Pathol* 2001a;159:1681–8. [PubMed: 11696429]
- Chan LS, Robinson N, Xu L. Expression of interleukin-4 in the epidermis of transgenic mice results in a pruritic inflammatory skin disease: an experimental animal model to study atopic dermatitis. *J Invest Dermatol* 2001b;117:977–83. [PubMed: 11676841]
- Chen L, Martinez O, Venkataramani P, Lin SX, Prabhakar BS, Chan LS. Correlation of disease evolution with progressive inflammatory cell activation and migration in the IL-4 transgenic mouse model of atopic dermatitis. *Clin Exp Immunol* 2005;139:189–201. [PubMed: 15654817]
- Choi EH, Brown BE, Crumrine D, Chang S, Man MQ, Elias PM, et al. Mechanisms by which psychologic stress alters cutaneous permeability barrier homeostasis and stratum corneum integrity. *J Invest Dermatol* 2005a;124:587–95. [PubMed: 15737200]



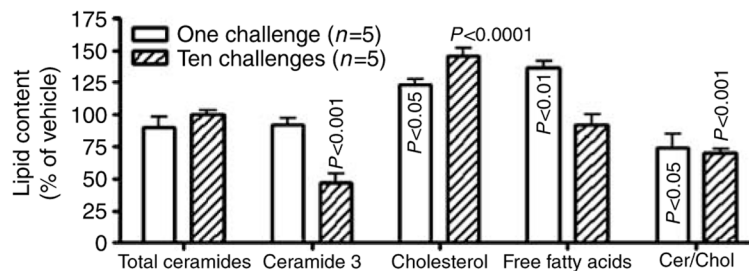
- Choi EH, Demerjian M, Crumrine D, Brown BE, Mauro T, Elias PM, et al. Glucocorticoid blockade reverses psychological stress-induced abnormalities in epidermal structure and function. *Am J Physiol Regul Integr Comp Physiol* 2006;291:R1657–62. [PubMed: 16857896]
- Choi EH, Man MQ, Wang F, Zhang X, Brown BE, Feingold KR, et al. Is endogenous glycerol a determinant of stratum corneum hydration in humans? *J Invest Dermatol* 2005b;125:288–93. [PubMed: 16098039]
- Cork MJ, Robinson DA, Vasilopoulos Y, Ferguson A, Moustafa M, MacGowan A, et al. New perspectives on epidermal barrier dysfunction in atopic dermatitis: gene–environment interactions. *J Allergy Clin Immunol* 2006;118:3–21. [PubMed: 16815133]quiz 22–23
- Demerjian M, Man MQ, Choi EH, Brown BE, Crumrine D, Chang S, et al. Topical treatment with thiazolidinediones, activators of peroxisome proliferator-activated receptor-gamma, normalizes epidermal homeostasis in a murine hyperproliferative disease model. *Exp Dermatol* 2006;15:154–60. [PubMed: 16480422]
- Denda M, Tsuchiya T. Barrier recovery rate varies time-dependently in human skin. *Br J Dermatol* 2000;142:881–4. [PubMed: 10809843]
- Di Nardo A, Wertz P, Giannetti A, Seidenari S. Ceramide and cholesterol composition of the skin of patients with atopic dermatitis. *Acta Derm Venereol* 1998;78:27–30. [PubMed: 9498022]
- Elias PM. The stratum corneum revisited. *J Dermatol* 1996a;23:756–8. [PubMed: 8990698]
- Elias PM. Stratum corneum architecture, metabolic activity and interactivity with subjacent cell layers. *Exp Dermatol* 1996b;5:191–201. [PubMed: 8889466]
- Elias PM, Ansel JC, Woods LD, Feingold KR. Signaling networks in barrier homeostasis. The mystery widens. *Arch Dermatol* 1996;132:1505–6. [PubMed: 8961883]
- Elias, PM.; Feingold, KR. Skin as an organ of protection. In: Freedberg, IM.; Eisen, AZ.; Wolff, K.; Austen, KF.; Goldsmith, LA.; Katz, SI.; Fitzpatrick, TB., editors. *Fitzpatrick's Dermatology in General Medicine*. Philadelphia: McGraw-Hill; 1999. p. 164–74.
- Elias PM, Wood LC, Feingold KR. Epidermal pathogenesis of inflammatory dermatoses. *Am J Contact Dermat* 1999;10:119–26. [PubMed: 10444104]
- Fan WY, Kouda K, Nakamura H, Takeuchi H. Effects of dietary restriction on spontaneous dermatitis in NC/Nga mice. *Exp Biol Med* 2001;226:1045–50.
- Fartasch M, Bassukas ID, Diepgen TL. Disturbed extruding mechanism of lamellar bodies in dry non-eczematous skin of atopics. *Br J Dermatol* 1992;127:221–7. [PubMed: 1390165]
- Fowler AJ, Sheu MY, Schmuth M, Kao J, Fluhr JW, Rhein L, et al. Liver X receptor activators display anti-inflammatory activity in irritant and allergic contact dermatitis models: liver-X-receptor-specific inhibition of inflammation and primary cytokine production. *J Invest Dermatol* 2003;120:246–55. [PubMed: 12542530]
- Gao XK, Nakamura N, Fuseda K, Tanaka H, Inagaki N, Nagai H. Establishment of allergic dermatitis in NC/Nga mice as a model for severe atopic dermatitis. *Biol Pharm Bull* 2004;27:1376–81. [PubMed: 15340222]
- Grewe M, Bruijnzeel-Koomen CA, Schopf E, Thepen T, Langeveld-Wildschut AG, Ruzicka T, et al. A role for Th1 and Th2 cells in the immunopathogenesis of atopic dermatitis. *Immunol Today* 1998;19:359–61. [PubMed: 9709503]
- Hachem JP, Behne M, Aronchik I, Demerjian M, Feingold KR, Elias PM, et al. Extracellular pH Controls NHE1 expression in epidermis and keratinocytes: implications for barrier repair. *J Invest Dermatol* 2005a;125:790–7. [PubMed: 16185280]
- Hachem JP, Crumrine D, Fluhr J, Brown BE, Feingold KR, Elias PM. pH directly regulates epidermal permeability barrier homeostasis, and stratum corneum integrity/cohesion. *J Invest Dermatol* 2003;121:345–53. [PubMed: 12880427]
- Hachem JP, Man MQ, Crumrine D, Uchida Y, Brown BE, Rogiers V, et al. Sustained serine proteases activity by prolonged increase in pH leads to degradation of lipid processing enzymes and profound alterations of barrier function and stratum corneum integrity. *J Invest Dermatol* 2005b;125:510–20. [PubMed: 16117792]
- Hansson L, Backman A, Ny A, Edlund M, Ekholm E, Ekstrand Hammarstrom B, et al. Epidermal overexpression of stratum corneum chymotryptic enzyme in mice: a model for chronic itchy dermatitis. *J Invest Dermatol* 2002;118:444–9. [PubMed: 11874483]

- Hatano Y, Terashi H, Arakawa S, Katagiri K. Interleukin-4 suppresses the enhancement of ceramide synthesis and cutaneous permeability barrier functions induced by tumor necrosis factor-alpha and interferon-gamma in human epidermis. *J Invest Dermatol* 2005;124:786–92. [PubMed: 15816837]
- Homey B, Steinhoff M, Ruzicka T, Leung DY. Cytokines and chemokines orchestrate atopic skin inflammation. *J Allergy Clin Immunol* 2006;118:178–89. [PubMed: 16815153]
- Hou SY, Mitra AK, White SH, Menon GK, Ghadially R, Elias PM. Membrane structures in normal and essential fatty acid-deficient stratum corneum: characterization by ruthenium tetroxide staining and X-ray diffraction. *J Invest Dermatol* 1991;96:215–23. [PubMed: 1991982]
- Imokawa G, Abe A, Jin K, Higaki Y, Kawashima M, Hidano A. Decreased level of ceramides in stratum corneum of atopic dermatitis: an etiologic factor in atopic dry skin? *J Invest Dermatol* 1991;96:523–6. [PubMed: 2007790]
- Kang JS, Lee K, Han SB, Ahn JM, Lee H, Han MH, et al. Induction of atopic eczema/dermatitis syndrome-like skin lesions by repeated topical application of a crude extract of *Dermatophagoides pteronyssinus* in NC/Nga mice. *Int Immunopharmacol* 2006;6:1616–22. [PubMed: 16919834]
- Kao JS, Fluhr JW, Man MQ, Fowler AJ, Hachem JP, Crumrine D, et al. Short-term glucocorticoid treatment compromises both permeability barrier homeostasis and stratum corneum integrity: inhibition of epidermal lipid synthesis accounts for functional abnormalities. *J Invest Dermatol* 2003;120:456–64. [PubMed: 12603860]
- Kiank C, Holtfreter B, Starke A, Mundt A, Wilke C, Schutt C. Stress susceptibility predicts the severity of immune depression and the failure to combat bacterial infections in chronically stressed mice. *Brain Behav Immun* 2006;20:359–68. [PubMed: 16330179]
- Kitagaki H, Fujisawa S, Watanabe K, Hayakawa K, Shiohara T. Immediate-type hypersensitivity response followed by a late reaction is induced by repeated epicutaneous application of contact sensitizing agents in mice. *J Invest Dermatol* 1995;105:749–55. [PubMed: 7490467]
- Konishi H, Tsutsui H, Murakami T, Yumikura-Futatsugi S, Yamanaka K, Tanaka M, et al. IL-18 contributes to the spontaneous development of atopic dermatitis-like inflammatory skin lesion independently of IgE/stat6 under specific pathogen-free conditions. *Proc Natl Acad Sci USA* 2002;99:11340–5. [PubMed: 12151598]
- Leung DY, Boguniewicz M, Howell MD, Nomura I, Hamid QA. New insights into atopic dermatitis. *J Clin Invest* 2004;113:651–7. [PubMed: 14991059]
- Leung DY, Jain N, Leo HL. New concepts in the pathogenesis of atopic dermatitis. *Curr Opin Immunol* 2003;15:634–8. [PubMed: 14630196]
- Macheleidt O, Kaiser HW, Sandhoff K. Deficiency of epidermal protein-bound omega-hydroxyceramides in atopic dermatitis. *J Invest Dermatol* 2002;119:166–73. [PubMed: 12164940]
- Mao-Qiang M, Jain M, Feingold KR, Elias PM. Secretory phospholipase A2 activity is required for permeability barrier homeostasis. *J Invest Dermatol* 1996;106:57–63. [PubMed: 8592082]
- Marenholz I, Nickel R, Ruschendorf F, Schulz F, Esparza-Gordillo J, Kerscher T, et al. Filaggrin loss-of-function mutations predispose to phenotypes involved in the atopic march. *J Allergy Clin Immunol* 2006;118:866–71. [PubMed: 17030239]
- Matsuda H, Watanabe N, Geba GP, Sperl J, Tsudzuki M, Hiroi J, et al. Development of atopic dermatitis-like skin lesion with IgE hyperproduction in NC/Nga mice. *Int Immunol* 1997;9:461–6. [PubMed: 9088984]
- Matsukura S, Aihara M, Hirasawa T, Ikezawa Z. Effects of TNCB sensitization in DS-Nh mice, serving as a model of atopic dermatitis, in comparison with NC/Nga mice. *Int Arch Allergy Immunol* 2005;136:173–80. [PubMed: 15650316]
- Matsumoto K, Mizukoshi K, Oyobikawa M, Ohshima H, Tagami H. Establishment of an atopic dermatitis-like skin model in a hairless mouse by repeated elicitation of contact hypersensitivity that enables to conduct functional analyses of the stratum corneum with various non-invasive biophysical instruments. *Skin Res Technol* 2004;10:122–9. [PubMed: 15059180]
- Matsuoka H, Maki N, Yoshida S, Arai M, Wang J, Oikawa Y, et al. A mouse model of the atopic eczema/dermatitis syndrome by repeated application of a crude extract of house-dust mite *Dermatophagoides farinae*. *Allergy* 2003;58:139–45. [PubMed: 12622745]

- Nakae S, Naruse-Nakajima C, Sudo K, Horai R, Asano M, Iwakura Y. IL-1 alpha, but not IL-1 beta, is required for contact-allergen-specific T cell activation during the sensitization phase in contact hypersensitivity. *Int Immunol* 2001;13:1471–8. [PubMed: 11717188]
- Novak N, Bieber T. The role of dendritic cell subtypes in the pathophysiology of atopic dermatitis. *J Am Acad Dermatol* 2005;53:S171–6. [PubMed: 16021172]
- Ong PY, Hamid QA, Travers JB, Strickland I, Al Kerithy M, Boguniewicz M, et al. Decreased IL-15 may contribute to elevated IgE and acute inflammation in atopic dermatitis. *J Immunol* 2002a;168:505–10. [PubMed: 11751999]
- Ong PY, Ohtake T, Brandt C, Strickland I, Boguniewicz M, Ganz T, et al. Endogenous antimicrobial peptides and skin infections in atopic dermatitis. *N Engl J Med* 2002b;347:1151–60. [PubMed: 12374875]
- Palmer CN, Irvine AD, Terron-Kwiatkowski A, Zhao Y, Liao H, Lee SP, et al. Common loss-of-function variants of the epidermal barrier protein filaggrin are a major predisposing factor for atopic dermatitis. *Nat Genet* 2006;38:441–6. [PubMed: 16550169]
- Sager N, Feldmann A, Schilling G, Kreitsch P, Neumann C. House dust mite-specific T cells in the skin of subjects with atopic dermatitis: frequency and lymphokine profile in the allergen patch test. *J Allergy Clin Immunol* 1992;89:801–10. [PubMed: 1373161]
- Sandilands A, O'Regan GM, Liao H, Zhao Y, Terron-Kwiatkowski A, Watson RM, et al. Prevalent and rare mutations in the gene encoding filaggrin cause ichthyosis vulgaris and predispose individuals to atopic dermatitis. *J Invest Dermatol* 2006;126:1770–5. [PubMed: 16810297]
- Savinko T, Lauerma A, Lehtimäki S, Gombert M, Majuri ML, Fyhrquist-Vanni N, et al. Topical superantigen exposure induces epidermal accumulation of CD8+ T cells, a mixed Th1/Th2-type dermatitis and vigorous production of IgE antibodies in the murine model of atopic dermatitis. *J Immunol* 2005;175:8320–6. [PubMed: 16339573]
- Segre JA. Epidermal differentiation complex yields a secret: mutations in the cornification protein filaggrin underlie ichthyosis vulgaris. *J Invest Dermatol* 2006;126:1202–4. [PubMed: 16702965]
- Seidenari S, Giusti G. Objective assessment of the skin of children affected by atopic dermatitis: a study of pH, capacitance and TEWL in eczematous and clinically uninvolved skin. *Acta Derm Venereol* 1995;75:429–33. [PubMed: 8651017]
- Sheu MY, Fowler AJ, Kao J, Schmuth M, Schoonjans K, Auwerx J, et al. Topical peroxisome proliferator activated receptor-alpha activators reduce inflammation in irritant and allergic contact dermatitis models. *J Invest Dermatol* 2002;118:94–101. [PubMed: 11851881]
- Smith FJ, Irvine AD, Terron-Kwiatkowski A, Sandilands A, Campbell LE, Zhao Y, et al. Loss-of-function mutations in the gene encoding filaggrin cause ichthyosis vulgaris. *Nat Genet* 2006;38:337–42. [PubMed: 16444271]
- Sorensen OE, Cowland JB, Theilgaard-Monch K, Liu L, Ganz T, Borregaard N. Wound healing and expression of antimicrobial peptides/polypeptides in human keratinocytes, a consequence of common growth factors. *J Immunol* 2003;170:5583–9. [PubMed: 12759437]
- Tagami, H.; Kikuchi, K. Diseases that affect barrier function. In: Elias, PM.; Feingold, KR., editors. *Skin Barrier*. New York: Taylor & Francis; 2006. p. 447-68.
- Uchida, Y.; Hamanaka, S. Stratum corneum ceramides: function, origins, and therapeutic applications. In: Elias, PM.; Feingold, KR., editors. *Skin Barrier*. New York: Taylor & Francis; 2006. p. 43-64.
- Vasilopoulos Y, Cork MJ, Murphy R, Williams HC, Robinson DA, Duff GW, et al. Genetic association between an AACC insertion in the 3'UTR of the stratum corneum chymotryptic enzyme gene and atopic dermatitis. *J Invest Dermatol* 2004;123:62–6. [PubMed: 15191543]
- Walley AJ, Chavanas S, Moffatt MF, Esnouf RM, Ubhi B, Lawrence R, et al. Gene polymorphism in Netherton and common atopic disease. *Nat Genet* 2001;29:175–8. [PubMed: 11544479]
- Weidinger S, Illig T, Baurecht H, Irvine AD, Rodriguez E, Diaz-Lacava A, et al. Loss-of-function variations within the filaggrin gene predispose for atopic dermatitis with allergic sensitizations. *J Allergy Clin Immunol* 2006;118:214–9. [PubMed: 16815158]
- Werfel T, Hentschel M, Kapp A, Renz H. Dichotomy of blood- and skin-derived IL-4-producing allergen-specific T cells and restricted V beta repertoire in nickel-mediated contact dermatitis. *J Immunol* 1997;158:2500–5. [PubMed: 9037002]

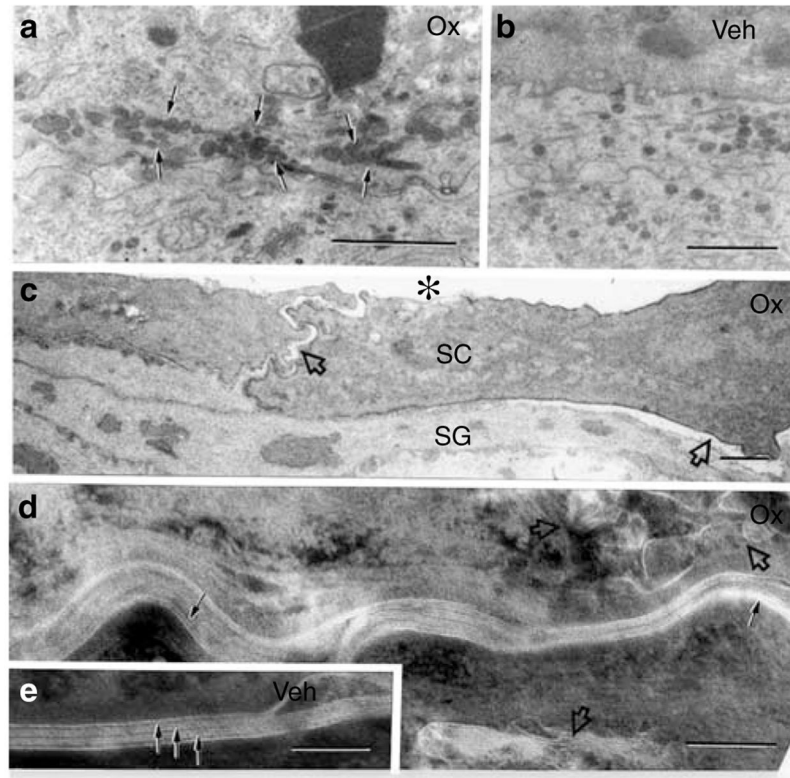


**Figure 1. Functional abnormalities emerge after multiple Ox Challenges**  
**(a)** SC hydration assessed as electrical capacitance, in absolute units. **(b)** Surface pH assessed with a flat surface electrode. **(c)** Permeability barrier function, assessed as changes in basal TEWL with an electrolytic water analyzer (as mg/cm<sup>2</sup>/hour). **(d)** Kinetics of permeability barrier recovery after acute barrier disruption by cellophane tape stripping (initial TEWL is increased to 20- to 30-fold above basal levels).



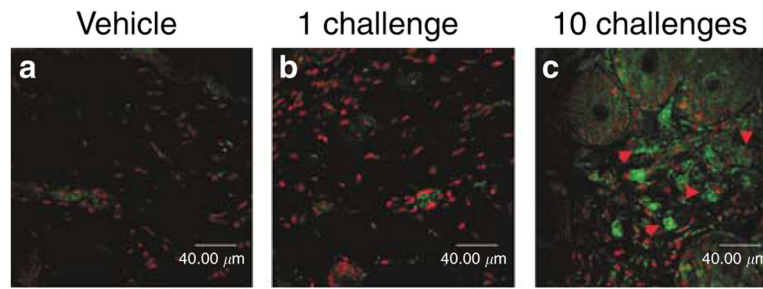
**Figure 2. Repeated Ox challenges alter stratum corneum lipid content/distribution**

Cohorts of hairless mice ( $n=5$  each) were treated with vehicle alone, or Ox (1 or 10 applications). Lipids were extracted from isolated stratum corneum sheets with Blich-Dyer solvents, fractionated, quantified, and the content of each fraction was expressed as  $\mu\text{g}/\text{mg}$  dry SC weight. Data were expressed as % change from vehicle-treated  $\pm$  SEM.

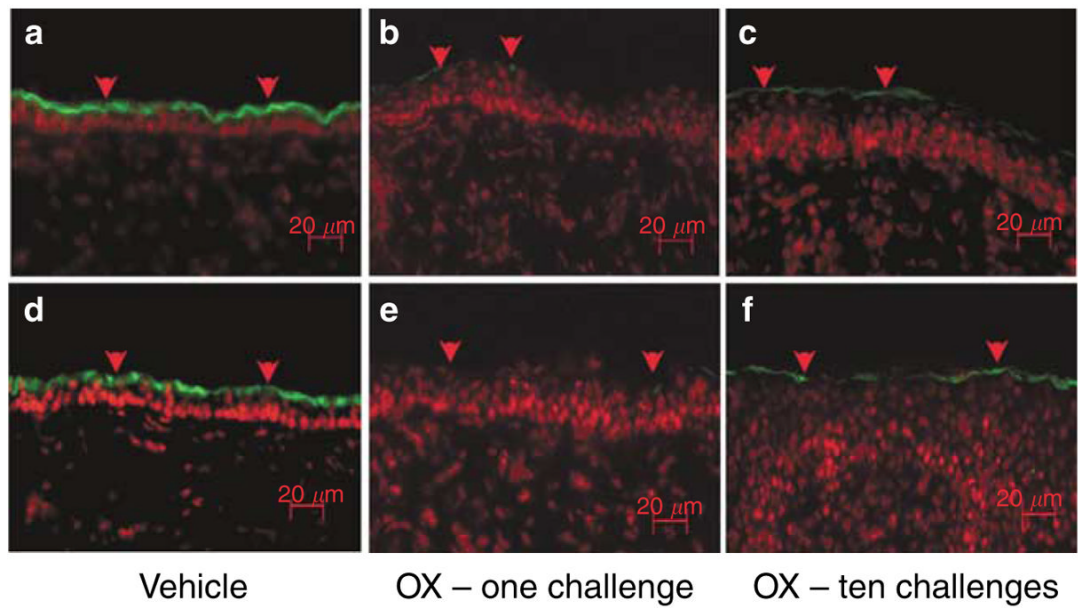


**Figure 3. Repeat Ox-challenged SC displays entombed lamellar bodies, lamellar membrane disorganization, and corneocyte detachment**

(a) Lamellar bodies (LBs) accumulate in the peripheral cytosol of granular cells in Ox-challenged mice (arrows), while (b) LB are more widely dispersed in preparation for secretion in vehicle (Veh)-treated mice. (c) Ox-challenged corneocytes (SC) focally detach from underlying stratum granulosum (SG) and lose contact between themselves (open arrows), sometimes leading to large cleavage planes (asterisk). Decreased quantities and poor organization of extracellular lamellar membranes are seen in Ox-challenged (d, single arrows) *versus* vehicle-treated (e, layered arrows) mice. Note entombed organelle remnants in corneocyte cytosol of Ox-challenged mice, indicating incomplete LB secretion (d, open arrows). (a–c) Osmium tetroxide post-fixation; (d, e) ruthenium tetroxide post-fixation. Bars=1  $\mu\text{m}$  (a–c); 0.1  $\mu\text{m}$  (d, e).



**Figure 4. Th2 immunophenotype predominates after repeated Ox challenges**  
(a) CRTH2 immunostaining of Th2 lymphocytes is virtually absent in dermis after (a) vehicle treatment alone or (b) one Ox challenge, but density of CRTH2-positive cells increases significantly after 10 challenges (c, arrows). Merged images with propidium iodide secondary staining in 5 μm frozen sections. Bar=40 μm.



**Figure 5. Antimicrobial peptide expression declines after one Ox challenge, and remains reduced after 10 challenges**

Immunofluorescent staining for (a–c) cathelicidin-related antimicrobial peptide (CRAMP) and (d–f) mouse  $\beta$ -defensin 3 (mBD3). (a, d) With vehicle treatment; (b, e) with one Ox challenge; (c, f) with 10 Ox challenges. Propidium iodide counterstaining. Bars=20  $\mu$ m.