

Comparison of the ^{13}C -urea breath test and the endoscopic phenol red mucosal pH test in the quantification of *Helicobacter pylori* infection loading

Young-Seok Cho, M.D.¹, Hiun-Suk Chae, M.D.¹, Se Na Jang, M.D.¹,
Jin-Soo Kim, M.D.¹, Hye Suk Son, M.D.¹, Hyung-Keun Kim, M.D.¹,
Byung-Wook Kim, M.D.¹, Sok-Won Han, M.D.¹, Kyu-Yong Choi, M.D.¹,
Hae Kyung Lee, M.D.² and Eun Deok Chang, M.D.²

Departments of Internal Medicine, Division of Gastroenterology¹ and Clinical Pathology²
The Catholic University of Korea, College of Medicine Seoul, Korea²

Background/Aims: The ^{13}C -urea breath test (UBT) is a semiquantitative test for measuring *Helicobacter pylori* infection loading. *H. pylori* produces ammonia, which elevates the pH of the gastric mucosa and is detectable via endoscopy using a phenol red indicator. We evaluated whether this test could be used to diagnose *H. pylori* infection and whether phenol red staining was correlated with ^{13}C -UBT results.

Methods: One hundred and twenty-three patients participated. The UBT was performed after ingestion of a capsule containing urea. A change in ^{13}C -UBT $>2\%$ was selected as the cutoff value for diagnosing infection. After spraying evenly with a 0.1% phenol red solution, the pH of the gastric mucosal surface was measured using an antimony electrode through the biopsy channel.

Results: The pH of stained mucosa (6.9 ± 0.4) was significantly higher than that of unstained mucosa (1.9 ± 0.8 ; $p < 0.001$), and the *H. pylori* detection rate confirmed via histology was higher in stained versus unstained mucosa ($p < 0.01$). Extensive mucosal staining resulted in a higher detection rate ($p < 0.001$). The UBT produced results were very similar to those obtained via histological detection in stained mucosa ($p < 0.001$). The extent of staining, expressed as a staining score, was positively correlated with the change in ^{13}C -UBT ($r=0.426$, $p < 0.001$). A significant correlation was also observed between the histologically determined *H. pylori* density and ^{13}C -UBT results ($r=0.674$, $p < 0.001$).

Conclusions: *H. pylori* infection elevates gastric mucosal surface pH, and endoscopic phenol red staining may be an alternative method for the diagnosis of *H. pylori* infection.

Key Words: *Helicobacter pylori*; Mucosal surface pH; Phenol red; Urea breath test.

INTRODUCTION

Helicobacter pylori infection is associated with chronic active gastritis, peptic ulcer disease, gastric adenocarcinoma, and mucosa-associated lymphoid tissue lymphomas¹⁻³. Many noninvasive and invasive methods have been developed for the

diagnosis of *H. pylori* infections, including direct culture, histology, rapid urease testing, polymerase chain reaction (PCR) bacterial DNA amplification, the use of *H. pylori*-specific antibodies, the urea breath test (UBT) using ^{13}C - or ^{14}C -labeled urea, and stool antigen detection⁴. The ^{13}C -UBT measures intragastric urease activity and is generally considered to be an

•Received: February 15, 2008

•Accepted: April 30, 2008

•Correspondence to: Hiun-Suk Chae, M.D., The Catholic University of Korea, Department of Internal Medicine, Division of Gastroenterology, Seoul and Uijeongbu St. Mary's Hospital, Uijeongbu, Korea, 65-1, Geumo-dong, Uijeongbu 480-717, Korea Tel: 82-31-820-3019, Fax: 82-31-847-2719, E-mail: chs@catholic.ac.kr

*This study has not been previously published or submitted for publication elsewhere. The authors have no conflict of interest to declare.

accurate, noninvasive, and semiquantitative method to determine *H. pylori* loading^{5, 6}. However, the UBT has limitations inherent to noninvasive methods: it cannot pinpoint the position of upper gastrointestinal disease or provide histological information.

H. pylori produces ammonia via the activity of a potent bacterial urease, which is detectable via diagnostic assays such as the CLOtest⁷. Urease activity can lead to mucosal damage by degrading urea in human tissue^{8, 9}, and the resultant ammonia can elevate mucosal pH at the site of infection. Therefore, we examined whether mucosal surface pH can be determined endoscopically using phenol red as a pH indicator, and whether such a technique is useful in the detection of *H. pylori* infection. To quantify *H. pylori* loading, we also examined whether the extent of the affected region was correlated with UBT values. In addition, we documented several noteworthy points in the phenol red spraying procedure and in the interpretation of results.

MATERIALS AND METHODS

Patients

From March to November 2006, 123 patients undergoing routine upper gastrointestinal endoscopy for dyspeptic symptoms were recruited into this study (46 men and 77 women aged 19–79 years). These patients suffered from nonulcer dyspepsia (n=109), duodenal ulcers (n=8), or gastric ulcers (n=6). The ¹³C-UBT was performed 1 day after the patients had fasted for at least 8 h. On the second day, the endoscopic phenol red test was performed after at least an 8-h fast. In addition, two to three gastric mucosal biopsies were taken at stained and unstained sites in the antrum and the body for histological analysis, which remains the gold standard for the diagnosis of *H. pylori* infection. Exclusion criteria included previous eradication therapy or the use of bismuth compounds, proton pump inhibitors, antibiotics, or anti-secretory drugs within the previous 2 months. Patients with hepatobiliary, pulmonary or metabolic diseases, or previous gastric surgery were also excluded. Written informed consent was obtained from all patients. The protocol was approved by the institutional review board of the Catholic University of Korea.

¹³C-Urea Breath Test

All patients were subjected to the ¹³C-UBT on the first day of the study after an overnight or 8-h fast. A baseline breath sample (normal exhalation for 4 s) was collected into a collection tube. A capsule containing 38 mg ¹³C-urea in 50 mL of water (HeliFinder; Isodiagnostika, Edmonton, AB, Canada) was then administered orally. A second breath sample was collected 20 min later. Breath samples were then analyzed via mass

spectrometry (HeliView; MediChem, Seoul, Korea) to determine the ¹³C to ¹²C ratio, which was expressed per mil (‰). The change in ¹³C relative to the baseline value was expressed as Δ ¹³C. A positive result was defined as a positive Δ ¹³C >2‰.

Endoscopic Phenol Red Test

The distribution of pH changes indicative of *H. pylori* infection in the gastric mucosa was examined via endoscopic phenol red spraying. Patients were subjected to gastroscopy after first receiving a local oral anesthetic (10% xylocaine) and an intramuscular injection of 20 mg of scopolamine butylbromide (Buscopan; Boehringer Ingelheim Company Ltd., Seoul, Korea) to reduce gastric motility. A videoendoscope was inserted, gastric juice was aspirated to improve visibility during endoscopy, and the interior of the stomach was inspected. A 0.1% solution of phenol red was sprayed evenly over the entire surface of the gastric mucosa using a spray catheter (PW-5L-1; Olympus Co., Tokyo, Japan) passed through the biopsy channel of the endoscope. A yellow to red color change occurred 2–3 min after applying the dye and persisted for at least 15 min. We classified the staining patterns into four types based on the classification described by Kohli et al¹⁰. The extent of staining was scored on a scale of 0 to 3: 0, no staining; 1, patchy staining in which red areas were observed in one part of the stomach, such as the antrum, body, or cardia; 2, regional staining in which red areas were observed in two parts of the stomach, such as the antrum and body or the body and cardia; 3, diffuse staining in which red areas were observed in all regions. An antimony pH electrode catheter (catalog #9012P3001; Medtronic A/S, København S, Denmark) connected to an ambulatory pH meter (Digitrapper Mk III; Synetics Medical AB, Stockholm, Sweden) was passed through the biopsy channel of the endoscope. The tip was gently advanced under direct visualization until it abutted with the mucosa, at which point it was held steady to provide a stable mucosal reading in the red and yellow areas. In total, surface pH measurements were obtained for 25 randomly selected stained areas (regional or diffuse staining) and 20 randomly selected unstained sites.

Histology

To examine the relationship between positive phenol red staining and the presence of *H. pylori*, endoscopic biopsies were taken at unstained and stained (patchy, regional, or diffuse) sites. Silver staining was used to histologically confirm the presence of *H. pylori* bacilli, irrespective of color change, staining patterns, or location (antrum or body). To quantify *H. pylori* loading, we selected the densest *H. pylori* infection site for comparison with UBT values. The specimens were fixed separately in 10% formalin, embedded in paraffin wax, and 5 μ m sections were stained with hematoxylin and eosin and the Warthin–Starry silver

Table 1. Gastric mucosa staining patterns after phenol red application

Staining pattern	No. of patients (%)
Diffuse	24 (19.5)
Regional	34 (27.6)
Patchy	38 (30.9)
Unstained	27 (22.0)
Total	123 (100)

technique. Two pathologists, who were unaware of the clinical, endoscopic, and $\Delta^{13}\text{C}$ -UBT results, evaluated the sections. The *H. pylori* bacterial load (*H. pylori* score) was classified according to the Updated Sydney System¹⁰.

Statistical Analysis

Spearman's rank correlation test was used to detect any correlation between $\Delta^{13}\text{C}$ -UBT values and *H. pylori* bacterial loading, gastric histological variables, and endoscopic phenol red scoring. Student's *t*-test was used to compare gastric surface pH values between stained and unstained mucosal sites, and chi-square tests were applied to compare the positive rate of *H. pylori* infection between stained and unstained mucosal sites. The data were analyzed using SPSS (version 10.0; SPSS Inc., Chicago, IL, USA).

RESULTS

Phenol Red Staining Pattern and Mucosal Surface pH

Phenol staining was classified into four types as described in the Materials and Methods (Figure 1). Table 1 shows the distribution of staining patterns, of which patchy staining (score of 1) was the most common. The surface pH of stained mucosa (6.9 ± 0.4) was significantly higher than that of unstained (yellow) gastric mucosa (1.9 ± 0.8 , $p < 0.001$) (Figure 2).

Phenol Red Staining and UBT Compared with Histopathology

Seventy-eight of 96 patients showing patchy, regional, or diffuse staining were also histologically positive for *H. pylori* (sensitivity, 81.3%), whereas 22 of 27 people with unstained mucosa were histologically negative for *H. pylori* (specificity, 81.5%; Table 2). In comparison to UBT results, phenol red staining also showed fair sensitivity (81/96 or 84.4%), but relatively low specificity (20/27 or 74.1%; Table 2). Among staining patterns, the *H. pylori* detection rate was higher at sites showing broad staining (regional and diffuse pattern) compared to patchy or no staining (Table 3), and *H. pylori* detection was most sensitive in sites showing regional staining (Table 3). The UBT and

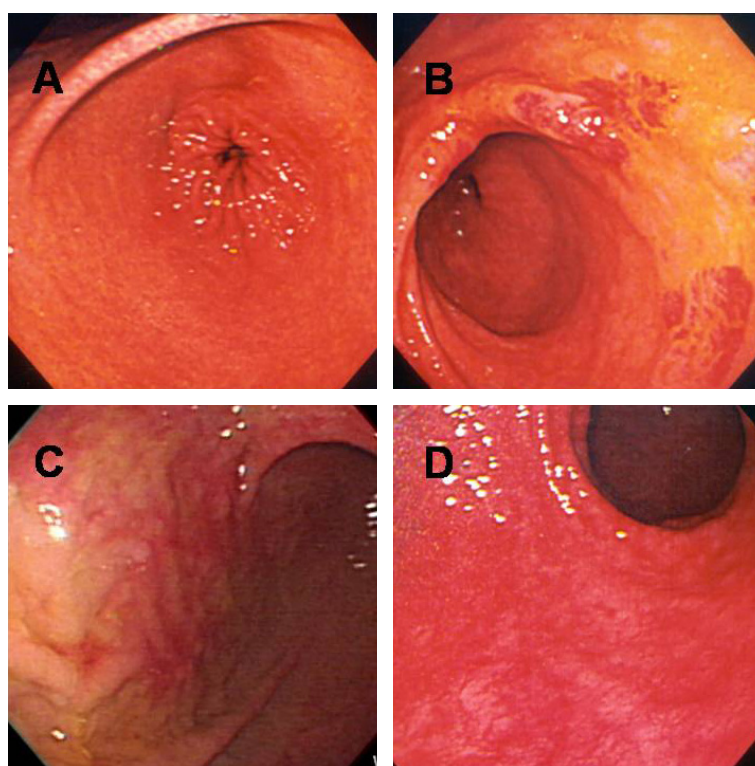


Figure 1. After spraying the gastric mucosa with phenol red, mucosal staining patterns were classified into four types: diffuse (A), regional (B), patchy (C), or unstained (D).

Table 2. Comparison of *H. pylori* detection via phenol red staining versus histological and $\Delta^{13}\text{C}$ -UBT results

Phenol red staining	Histological staining cases (%)		$\Delta^{13}\text{C}$ -UBT results cases (%)	
	Positive	Negative	≥ 2 (‰)	< 2 (‰)
Stained (n=96)	78 (81.3)	18 (18.7)	81 (84.4)	15 (15.6)
Unstained (n=27)	5 (18.5)	22 (81.5)	7 (25.9)	20 (74.1)

Table 3. Comparison of phenol red staining patterns with histological and $\Delta^{13}\text{C}$ -UBT results

Staining patterns	Histological staining cases (%)		$\Delta^{13}\text{C}$ -UBT results cases (%)	
	Positive	Negative	≥ 2 (‰)	< 2 (‰)
Diffuse (n=24)	20 (83.3)	4 (16.7)	23 (95.8)	1 (4.2)
Regional (n=34)	33 (97.1)	1 (2.9)	33 (97.1)	1 (2.9)
Patchy (n=38)	25 (65.8)	13 (34.2)	25 (65.8)	13 (34.2)
Unstained (n=27)	5 (18.5)	22 (81.5)	7 (25.9)	20 (74.1)

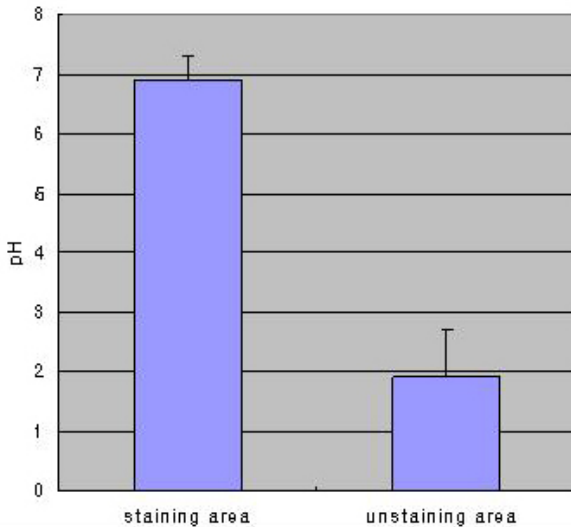


Figure 2. Gastric mucosa surface pH values in stained versus unstained areas after spraying with a 0.1% phenol red solution (* $p < 0.001$).

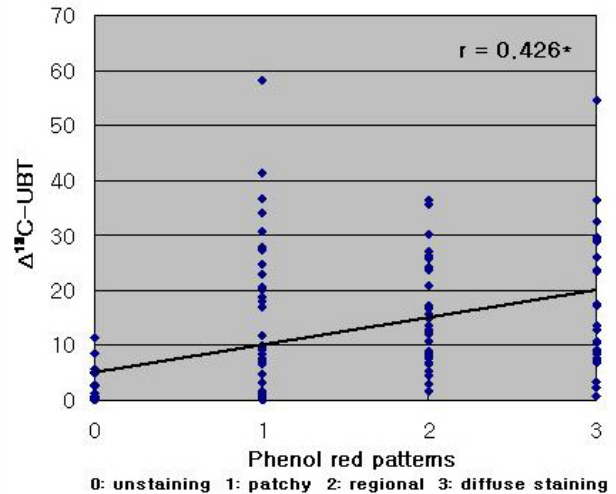


Figure 3. Correlation of $\Delta^{13}\text{C}$ -UBT values with phenol red scores ($r = 0.426$, * $p < 0.001$).

histological analysis showed very similar results (Table 3).

Correlation of UBT with Phenol Red Staining Patterns or Histology Results

Phenol red staining scores were correlated with $\Delta^{13}\text{C}$ -UBT results ($r = 0.426$, $p < 0.001$; Figure 3). However, a stronger correlation was observed between $\Delta^{13}\text{C}$ -UBT and the histologically determined *H. pylori* density ($r = 0.674$, $p < 0.001$) (Figure 4).

DISCUSSION

Numerous tests are available for *H. pylori* detection⁴, and noninvasive procedures, such as the UBT and serologic examination, are as accurate in predicting *H. pylori* status as invasive tests in untreated patients¹². Previous studies have

indicated that the high incidence of gastric cancer is closely associated with the high rate of *H. pylori* infection, particularly in Korea¹³⁻¹⁷. Therefore, it is important to use simultaneous invasive endoscopic observation and direct histological evaluation of *H. pylori* status to detect gastric cancer and develop a treatment strategy.

Currently, gastric biopsies for the purpose of histological *H. pylori* detection are generally taken from within the lesser curvature of the stomach, approximately 2~3 cm from the pylorus; this technique yields a relatively high rate of detection (>90%) under the correct orientation¹¹. However, because *H. pylori* infection is usually unevenly distributed across the gastric mucosa¹⁸, sampling errors leading to false negatives are unavoidable. Therefore, it is important to consider the intragastric distribution of *H. pylori* infection. In this study, we used phenol red staining to detect local pH changes due to ammonium

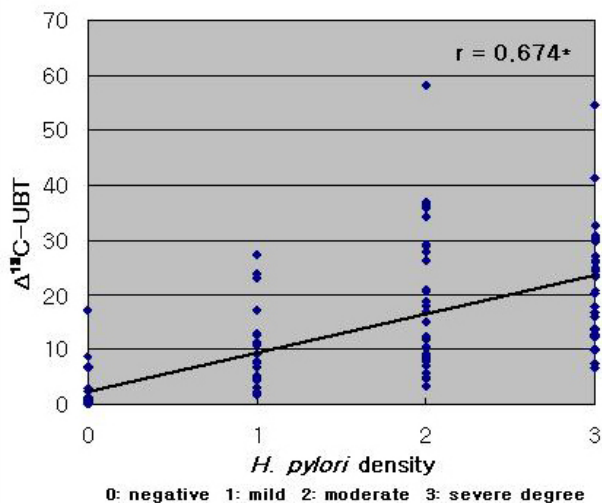


Figure 4. Correlation of $\Delta^{13}\text{C}$ -UBT values with *H. pylori* colonization density ($r=0.674$, $*p<0.001$).

production by urease, which revealed the intragastric distribution of *H. pylori*. We found that phenol red staining shows high detection sensitivity in stained mucosa (histologically positive rate, 81.3%; UBT, 84.4%) and high specificity in unstained mucosa (histologically negative rate 81.5%; UBT 74.1%). These results demonstrate a higher rate of *H. pylori* detection in mucosal regions with a high pH (stained mucosa) than in mucosal regions with low pH (unstained mucosa). In addition, phenol red staining may help to select infected biopsy sites, thus decreasing the rate of false negatives for *H. pylori* infection compared to the current blind biopsy approach. According to staining pattern, phenol red staining showed a significantly higher detection sensitivity in areas of broad staining (regional, 97.1%; diffuse, 83.3%) compared to patchy (65.8%) or unstained areas (18.5%).

The rate of *H. pylori* detection was lower in patients showing diffuse staining compared to those showing regional staining, which may reflect poor acid secretion due to severe gastric mucosal atrophy. Patchy staining was the most commonly observed pattern, but this may also reflect false positives resulting from localized injury caused by the catheter or by high-pressure spray. Alternatively, patchy staining may result from the leakage of extracellular fluid due to injuries before endoscopy, or the patient may experience bile reflux before or during endoscopy. To avoid false positives, we excluded patients showing bile flow from the duodenum or immediate color changes (i.e., bleeding) indicative of catheter-induced trauma. In addition, interobserver variation may have influenced our results, especially in patients showing patchy staining, which was associated with relatively low sensitivity and specificity. For these reasons, we excluded ten cases that may be affected by the above uncertainties. However, the remaining three staining

patterns presented no difficulty in terms of endoscopic interpretation.

To our knowledge, we are the first to demonstrate that changes in gastric mucosal pH, as determined via the application of a urea-free phenol red solution, can be used to assess *H. pylori* infection. In addition, phenol red staining scores were positively correlated with $\Delta^{13}\text{C}$ -UBT values. As such, the development of a device to measure the area of color change may one day allow for the direct quantification of *H. pylori* loading from phenol red staining. Previous studies have indicated that $\Delta^{13}\text{C}$ -UBT values are correlated with bacterial density^{19, 20}, although conflicting data have also been reported^{5, 21}. However, Rauws et al.²² reported a positive correlation between UBT values and quantitative antral culture results. In the present study, bacterial density was more strongly correlated with $\Delta^{13}\text{C}$ -UBT values than phenol red staining scores.

In the clinical setting, $\Delta^{13}\text{C}$ -UBT values are useful to determine the success of bacterial eradication therapy and to evaluate the efficacy of new antibiotics. Moreover, bacterial load may play an important role in determining the outcome of *H. pylori* eradication. A high bacterial load appears to be associated with an increased risk of gastroduodenal endoscopic lesions, such as peptic ulcer disease, and with the reduced efficacy of eradication therapy²³⁻²⁵. Based on the correlation between $\Delta^{13}\text{C}$ -UBT values and phenol red scores, *H. pylori* eradication may be more challenging in patients with regional or diffuse staining compared to patchy staining. Thus, endoscopists may be able to estimate the efficacy of eradication therapy directly based on endoscopic phenol red spraying, without waiting for UBT results.

Although endoscopic phenol red application and biopsy have some disadvantages in terms of time requirements, misinterpretation of color change or staining patterns, and biopsy-associated complications, this technique offers several advantages in terms of direct detection of the infection site, histological evaluation, potential area-based quantification of *H. pylori* loading, and little mucosal injury. Moreover, this endoscopic procedure is a relatively easy method of detecting *H. pylori* infection and is not harmful to humans¹⁰. No complication was observed in the course of this study.

REFERENCES

- 1) Warren JR, Marshall BJ. *Unidentified curved bacilli on gastric epithelium in active chronic gastritis*. *Lancet* 1:1273-1275, 1983
- 2) Wotherspoon AC, Ortiz-Hidalgo C, Falzon MR, Isaacson PG. *Helicobacter pylori-associated gastritis and primary B-cell gastric lymphoma*. *Lancet* 338:1175-1176, 1991
- 3) Parsonnet J, Friedman GD, Vandersteen DP, Chang Y, Vogelmann JH, Orentreich N, Sibley RK. *Helicobacter pylori infection and the risk of gastric carcinoma*. *N Engl J Med* 325:1127-1131, 1991

- 4) Basset C, Holton J, Ricci C, Gatta L, Tampieri A, Perna F, Miglioli M, Vaira D. *Review article: diagnosis and treatment of Helicobacter: a 2002 updated review*. *Aliment Pharmacol Ther* 17(Suppl 2):89-97, 2003
- 5) Graham DY, Klein PD. *Accurate diagnosis of Helicobacter pylori: 13C-urea breath test*. *Gastroenterol Clin North Am* 29:885-893, 2000
- 6) Malaty HM, el-Zimaity HM, Genta RM, Klein PD, Graham DY. *Twenty-minute fasting version of the US 13C-urea breath test for the diagnosis of the H. pylori infection*. *Helicobacter* 1:165-167, 1996
- 7) Tseng CA, Wang WM, Wu DC. *Comparison of the clinical feasibility of three rapid urease tests in the diagnosis of Helicobacter pylori infection*. *Dig Dis Sci* 50:449-452, 2005
- 8) Tsujii M, Kawano S, Tsuji S, Fusamoto H, Kamada T, Sato N. *Mechanism of gastric mucosal damage induced by ammonia*. *Gastroenterology* 102:1881-1888, 1992
- 9) Suzuki H, Yanaka A, Shibahara T, Matsui H, Nakahara A, Tanaka N, Muto H, Momoi T, Uchiyama Y. *Ammonia-induced apoptosis is accelerated at higher pH in gastric surface mucous cells*. *Am J Physiol Gastrointest Liver Physiol* 283:G986-G995, 2002
- 10) Kohli Y, Kato T, Iwaki M, Yamazaki Y, Hata M, Suzuki K, Ito S. *The distribution of Helicobacter pylori in human gastric mucosa in vivo*. *Dig Endosc* 3:457-460, 1991
- 11) Dixon MF, Genta RM, Yardley JH, Correa P. *Classification and grading of gastritis. The updated Sydney system*. *Am J Surg Pathol* 20:1161-1181, 1996
- 12) Cutler AF, Havstad S, Ma CK, Blaser MJ, Peres-Perez GI, Schubert TI. *Accuracy of invasive and noninvasive tests to diagnose Helicobacter pylori infection*. *Gastroenterology* 109:136-141, 1995
- 13) Kim HS, Lee YC, Lee HW, Yoo HM, Lee CG, Kim JM, Lee KJ, Kim PS, Moon BS, Park HJ, Kim DY, Lee KS, Kim WH, Han KH, Chung JB, Chon CY, Lee SI, Moon YM, Kang JK, Park IS. *Seroepidemiologic study of Helicobacter pylori infection in Korea*. *Korean J Gastroenterol* 33:170-182, 1999
- 14) Kim JH, Kim HY, Kim NY, Kim SW, Kim JG, Kim JJ, Roe IH, Seo JK, Sim JG, Ahn H, Yoon BC, Lee SW, Lee YC, Chung IS, Jung HY, Hong WS, Choi KW. *Seroepidemiological study of Helicobacter pylori infection in asymptomatic people in South Korea*. *J Gastroenterol Hepatol* 16:969-975, 2001
- 15) Malaty HM, Kim JG, El-Zimaity HM, Graham DY. *High prevalence of duodenal ulcer and gastric cancer in dyspeptic patients in Korea*. *Scand J Gastroenterol* 32:751-754, 1997
- 16) Bae JM, Won YJ, Jung KW, Park JG. *Annual report of the Korea central cancer registry program 2000: based on registered data from 131 hospitals*. *Cancer Res Treat* 34:77-83, 2002
- 17) Breslin NP, Thomson AB, Bailey RJ, Blustein PK, Meddings J, Lalor E, VanRosendaal GM, Verhoef MJ, Sutherland LR. *Gastric cancer and other endoscopic diagnoses in patients with benign dyspepsia*. *Gut* 46:93-97, 2000
- 18) Goodwin CS, Armstrong JA, Marshall BJ. *Campylobacter pyloridis, gastritis and peptic ulceration*. *J Clin Pathol* 39:353-365, 1986
- 19) Zagari RM, Pozzato P, Martuzzi C, Fuccio L, Martinelli G, Roda E, Bazzoli F. *13C-urea breath test to assess Helicobacter pylori bacterial load*. *Helicobacter* 10:615-619, 2005
- 20) Perri F, Clemente R, Pastore M, Quitadamo M, Festa V, Bisceglia M, Li Bergoli M, Lauriola G, Leandro G, Ghos Y, Rutgeerts P, Andriulli A. *The 13C-urea breath test as a predictor of intragastric bacterial load and severity of Helicobacter pylori gastritis*. *Scand J Clin Lab Invest* 58:19-27, 1998
- 21) Logan RP, Polson RJ, Misiewicz JJ, Rao G, Karim NQ, Newell D, Johnson P, Wadsworth J, Walker MM, Baron JH. *Simplified single sample 13Carbon urea breath test for Helicobacter pylori: comparison with histology, culture and ELISA serology*. *Gut* 32:1461-1464, 1991
- 22) Rauws EA, Royen EA, Langenberg W, Woensel JV, Vrij AA, Tytgat GN. *14C-urea breath test in C pylori gastritis*. *Gut* 30:798-803, 1989
- 23) Maconi G, Parente F, Russo A, Vago L, Imbevi V, Bianchi Porro G. *Do some patients with Helicobacter pylori infection benefit from an extension to 2 weeks of a proton pump inhibitor-based triple eradication therapy?* *Am J Gastroenterol* 96:359-366, 2001
- 24) Moshkowitz M, Konikoff FM, Peled Y, Santo M, Hallak A, Bujanover Y, Tiomny E, Gilat T. *High Helicobacter pylori numbers are associated with low eradication rate after triple therapy*. *Gut* 36:845-847, 1995
- 25) Alam K, Schubert TT, Bologna SD, Ma CK. *Increased density of Helicobacter pylori on antral biopsy is associated with severity of acute and chronic inflammation and likelihood of duodenal ulceration*. *Am J Gastroenterol* 87:424-428, 1992