

# Correlation between high-resolution computed tomography features and patients' characteristics in chronic obstructive pulmonary disease

Prem P. Gupta, Rohtash Yadav<sup>1</sup>, Manish Verma, Dipti Agarwal<sup>2</sup>, Manoj Kumar<sup>3</sup>

Departments of  
Respiratory Medicine,  
<sup>1</sup>Radiodiagnosis,  
<sup>2</sup>Physiology,  
Postgraduate Institute  
of Medical Sciences,  
<sup>3</sup>Department of  
Biostatistics,  
PGIMS, Rohtak, India

## Abstract:

**BACKGROUND:** During the last few decades, high-resolution computed tomography (HRCT) has come up as a new diagnostic modality to diagnose emphysematous and chronic bronchitis components of chronic obstructive pulmonary disease (COPD). The present study was undertaken to evaluate for various quantitative and qualitative HRCT features in patients with COPD, and to detect patients' characteristics that correlate with these HRCT features.

**MATERIALS AND METHODS:** Forty male patients with COPD attending the COPD clinic at a tertiary referral hospital and postgraduate medical institute were included in the study. Various HRCT features, including tracheal index, thoracic cage ratio, sterno-aortic distance, thoracic cross-sectional area, vascular attenuation, vascular distortion, mosaic attenuation pattern, and directly visible small airways, were evaluated and correlated with patients' characteristics, including age, duration of illness, quantum of smoking, dyspnea score, quality-of-life index, and various spirometric indices.

**RESULTS:** We found significant correlations of various quantitative and qualitative HRCT features with age, duration of illness, quantum of smoking, quality-of-life index, and the spirometric indices showing the extent of airways obstruction.

**CONCLUSIONS:** Various quantitative and qualitative HRCT features were found to correlate with patients' characteristics, spirometric indices, and health-related quality-of-life score, suggesting that HRCT is useful not only in detecting emphysema and its various subtypes but also in predicting the extent and severity of COPD.

## Key words:

Chronic obstructive pulmonary disease, correlation analysis, high-resolution computed tomography features

Chronic obstructive pulmonary disease (COPD) is a leading cause of morbidity and mortality worldwide. The economic and social burden due to it is both substantial and projected to increase in the coming decades due to continued exposure to COPD risk factors and the changing age profile of the world's population. COPD mortality trends generally track several decades behind smoking trends. In the US in 2000, more women than men died of COPD or its related complications.<sup>[1]</sup>

COPD consists of a heterogeneous group of disorders, including emphysema, peripheral airways disease, and chronic bronchitis. The diagnosis of COPD is conventionally based upon spirometry;<sup>[1]</sup> But during the early stage of the disease, conventional spirometry may reveal no abnormality as the earliest changes in COPD affect the alveolar walls and small airways.<sup>[2]</sup> Also, definition of emphysema is a pathologic one, and it requires histopathological examination to authenticate the disease, which is not usually carried out and not often consented to by the patient.

During the last few decades, with the advent of HRCT as a new diagnostic modality, there has been an increased interest of diagnosing emphysematous and chronic bronchitis components of COPD using HRCT. Few isolated studies have suggested the role of HRCT in diagnosing different entities grouped under COPD. In the present study, apart from evaluating for the HRCT features of COPD, we have tried to detect patients' characteristics, including age, duration of illness, quantum of smoking, dyspnea score, quality-of-life index, and various spirometric indices that are correlated with the various established quantitative and qualitative HRCT features of COPD.

## Materials and Methods

The present study was conducted in the Departments of Respiratory Medicine and Radiodiagnosis at the Postgraduate Institute of Medical Sciences [PGIMS], Rohtak, India. The study was approved by the Institutional Board of Studies and by the Ethical Committee. The patients were enrolled from the COPD

**Correspondence to:**  
Dr. Prem Parkash Gupta,  
9J/17, Medical Enclave,  
PGIMS, Rohtak - 124 001,  
India.  
E-mail: gparkas@  
yahoo.co.in

**Submission:** 09-02-08  
**Accepted:** 20-03-08

Clinic run at the Department of Respiratory Medicine, PGIMS, Rohtak. Eligible male patients with COPD, aged 40 years or more, and who provided explicit written consent, attending the clinic during the period from February 2006 to December 2006 were included. The diagnosis of COPD was based on the criteria defined by 'Global Initiative for Chronic Obstructive Lung Disease (GOLD) 2004 update'.<sup>[3]</sup> All included patients had a smoking history of more than 20 pack years and had airflow limitation that was not fully reversible (postbronchodilator FEV<sub>1</sub> less than 80% of the predicted value in combination with FEV<sub>1</sub>/FVC not more than 70%). They had an increase in FEV<sub>1</sub> less than 200 mL or less than 12% of baseline value 20 minutes after 2 puffs of inhaled salbutamol that was given by a metered dose inhaler through a spacer. The patients were not included in the study if they had any evidence of coexisting bronchiectasis, cystic fibrosis, tuberculosis, bronchial asthma, interstitial lung disease, bronchogenic carcinoma, previous lung surgery, or coronary artery disease. They were excluded if they had any concomitant disorders like diabetes mellitus, chronic alcoholism, uremia, or sarcoidosis.

The study protocol required each patient to undergo routine clinical and laboratory evaluation, including complete blood examination, urine examination, chest radiograph, electrocardiography, echocardiography, and spirometry. Degree of breathlessness was measured by using *Medical Research Council (MRC) dyspnea scale*.<sup>[4]</sup> Smoking pack years were based on the mode of smoking (*bidi*, cigarette, or *hookka*),

daily consumption, and total years smoked. One pack year was 20 cigarettes smoked/day for 1 year.<sup>[5]</sup> For *bidi*, cigarette equivalents were calculated by multiplying with 0.5 to the quantum of *bidis*;<sup>[6]</sup> and for *hookka*, 12.5 g of loose tobacco was equivalent to one packet of 20 cigarettes.<sup>[7]</sup>

The spirometry was carried out on Transfer Test Model 'C', P. K. Morgan, Chatham, Kent, UK. All patients were required to withhold inhaled short-acting bronchodilators 6 hours before test, long-acting  $\beta$ -2 agonists 12 hours before test, and sustained-release theophylline 24 hours before test. Spirometric indices were calculated using the best out of 3 technically satisfactory performances as per recommendations of American Thoracic Society.<sup>[8]</sup> The following parameters were recorded: PEFr (peak expiratory flow rate) in liters/min, FEV<sub>1</sub> (forced expiratory volume in the first second) in liters, FVC (forced vital capacity) in liters, FEV<sub>1</sub>/FVC% (forced expiratory volume in first second/forced vital capacity %), SVC (slow vital capacity) in liters, and FEV<sub>1</sub>/SVC% (forced expiratory volume in the first second/slow vital capacity %). A questionnaire, *Airways Questionnaire 30*, validated by previous studies,<sup>[9,10]</sup> was used to assess the health-related quality of life in the present study [Box 1]. The positive responses were scored and then summed to provide a total score out of 30 (AQ30).

High-resolution computed tomography (HRCT) was carried out using Somatom Plus 4 volume zoom spiral CT scanner, Siemens, Erlanger, Germany. Scanning was performed at a field

#### Box 1: Health-related quality of life questionnaire (AQ 30)

	Yes	No	N/A
(1) Do you suffer from coughing attacks during the day?	<input type="checkbox"/>	<input type="checkbox"/>	<input type="checkbox"/>
(2) Because of your chest trouble, do you often feel restless?	<input type="checkbox"/>	<input type="checkbox"/>	<input type="checkbox"/>
(3) Because of your chest trouble, do you feel breathless maintaining the garden?	<input type="checkbox"/>	<input type="checkbox"/>	<input type="checkbox"/>
(4) Do you worry when going to a friend's house that there might be something there that will set off an attack of chest trouble?	<input type="checkbox"/>	<input type="checkbox"/>	<input type="checkbox"/>
(5) Do you suffer from chest symptoms as a result of exposure to strong smells, cigarette smoke, or perfume?	<input type="checkbox"/>	<input type="checkbox"/>	<input type="checkbox"/>
(6) Is your partner bothered by your chest trouble?	<input type="checkbox"/>	<input type="checkbox"/>	<input type="checkbox"/>
(7) Do you feel breathless while trying to sleep?	<input type="checkbox"/>	<input type="checkbox"/>	<input type="checkbox"/>
(8) Do you worry about the long-term effects on your health of the drugs that you have to take because of your chest trouble?	<input type="checkbox"/>	<input type="checkbox"/>	<input type="checkbox"/>
(9) Does getting emotionally upset make your chest trouble worse?	<input type="checkbox"/>	<input type="checkbox"/>	<input type="checkbox"/>
(10) Because of your chest trouble, are there times when you have difficulty getting around the house?	<input type="checkbox"/>	<input type="checkbox"/>	<input type="checkbox"/>
(11) Because of your chest trouble, do you suffer from breathlessness carrying out activities at work?	<input type="checkbox"/>	<input type="checkbox"/>	<input type="checkbox"/>
(12) Do you feel breathless walking upstairs because of your chest trouble?	<input type="checkbox"/>	<input type="checkbox"/>	<input type="checkbox"/>
(13) Because of your chest trouble, do you suffer from breathlessness doing housework?	<input type="checkbox"/>	<input type="checkbox"/>	<input type="checkbox"/>
(14) Because of your chest trouble, do you go home sooner than others after a night out?	<input type="checkbox"/>	<input type="checkbox"/>	<input type="checkbox"/>
(15) Because of your chest trouble, do you suffer from breathlessness when you laugh?	<input type="checkbox"/>	<input type="checkbox"/>	<input type="checkbox"/>
(16) Because of your chest trouble, do you often feel impatient?	<input type="checkbox"/>	<input type="checkbox"/>	<input type="checkbox"/>
(17) Because of your chest trouble, do you feel that you cannot enjoy a full life?	<input type="checkbox"/>	<input type="checkbox"/>	<input type="checkbox"/>
(18) Do you feel drained after a cold because of your chest trouble?	<input type="checkbox"/>	<input type="checkbox"/>	<input type="checkbox"/>
(19) Do you have a feeling of chest heaviness?	<input type="checkbox"/>	<input type="checkbox"/>	<input type="checkbox"/>
(20) Do you bother much about your chest trouble?	<input type="checkbox"/>	<input type="checkbox"/>	<input type="checkbox"/>
(21) Do you have difficulty taking part in sports because of your chest trouble?	<input type="checkbox"/>	<input type="checkbox"/>	<input type="checkbox"/>
(22) Do you worry about getting an attack of chest trouble even when you are well?	<input type="checkbox"/>	<input type="checkbox"/>	<input type="checkbox"/>
(23) Are you embarrassed by heavy breathing?	<input type="checkbox"/>	<input type="checkbox"/>	<input type="checkbox"/>
(24) Does your chest trouble affect you at any time other than when you are having an attack?	<input type="checkbox"/>	<input type="checkbox"/>	<input type="checkbox"/>
(25) Do you do all the things you want to regardless of the effects on your chest trouble?	<input type="checkbox"/>	<input type="checkbox"/>	<input type="checkbox"/>
(26) Because of your chest trouble, do you often feel helpless?	<input type="checkbox"/>	<input type="checkbox"/>	<input type="checkbox"/>
(27) Do you work badly when your chest trouble is bad?	<input type="checkbox"/>	<input type="checkbox"/>	<input type="checkbox"/>
(28) Because of your chest trouble, do you have difficulty doing housework?	<input type="checkbox"/>	<input type="checkbox"/>	<input type="checkbox"/>
(29) Is your sex life affected by your chest trouble?	<input type="checkbox"/>	<input type="checkbox"/>	<input type="checkbox"/>
(30) Do you suffer from discomfort when you cough?	<input type="checkbox"/>	<input type="checkbox"/>	<input type="checkbox"/>

of view large enough to encompass the patient. Images were obtained at maximum inspiration by using 1 mm collimation at 120 kV (kilo volt) (p) and 90 mA with a 0.75-second acquisition time. Scans were taken at 10-mm intervals with patient in the supine position. Images were reconstructed using a high-spatial frequency algorithm and a 512 × 512 matrix. No contrast was used. Following features were evaluated using HRCT:

1. Tracheal index: A ratio of transverse to anteroposterior diameter at a plane 1 cm above aortic arch. Saber-sheath trachea was described as when the tracheal index was less than 2/3.
2. Thoracic cage ratio: A ratio of anteroposterior to transverse diameter. It was evaluated at two planes: [a] tracheal carina, [b] 5 cm below carina.
3. Sterno-aortic distance: Distance from posterior surface of sternum to anterior margin of aorta at carinal level.
4. Thoracic cross-sectional area: Thoracic cross-sectional area (TCSA) was measured on HRCT images made 1 cm below the top of aortic arch. The ratio of TCSA to the square of height (TCSA/height<sup>2</sup>) was calculated for each patient.
5. Vascular attenuation: Vascular attenuation was considered when there was thinning of pulmonary vessels and reduction in their number.
6. Vascular distortion: Vascular distortion was described as increased branching angles and/or excessive straightening of pulmonary vessels.
7. Mosaic attenuation pattern: Mosaic attenuation meant nonhomogeneous lung density; the latter was described as areas that remain relatively lucent interspersed with areas of normal or higher lung density.
8. Directly visible small airways: The airways with internal diameter not more than 2 mm.

For statistical analyses, group means and standard deviations for each variable were calculated for the entire COPD group. Individual patients having abnormal values compared to normal reference range were identified as having significant HRCT features. Pearson's coefficient of correlation test and regression analysis were used to analyze the correlations between quantitative HRCT features and the patients' characteristics. Chi-square test was applied to correlate qualitative HRCT features with study variables. Various HRCT features were correlated with PEFr, FEV<sub>1</sub>, FVC, SVC, FEV<sub>1</sub>/FVC, FEV<sub>1</sub>/SVC, age, duration of illness, smoking pack years, dyspnea grade, and HRQL measured by AQ30 score. All statistical analyses were carried out with the help of SPSS software (version 10.0), Chicago.

## Results

The present study included 40 male patients with COPD. The patients' characteristics were as shown in Table 1. The mean age of the COPD patients was 58.55 ± 7.99 years, and the mean duration of illness was 12.63 ± 6.76 years. The smoking pack years ranged from 20 to 74 years. Their mean dyspnea score was 3.65 ± 0.92. The detailed spirometric values are shown in Table 1. The FEV<sub>1</sub>/FVC ratio varied from 29% to 68%, and the oxygen saturation was 88.5% to 98.6%. Thirty-four of the 40 patients had airway questionnaire 30 (AQ30) score between 15 and 25, signifying that these patients were having a quality of life that ranged from poor to average. The patients' characteristics suggest that the patients represented a fairly large spectrum of

COPD illness when seen from the severity perspective.

Table 1 also shows the group data of the quantitative HRCT features. The mean tracheal index was 0.67. The mean thoracic cage ratio at carina and 5 cm below the carina was 69.69% and 73.27% respectively. The sterno-aortic distance at carinal level was 3.01 ± 0.86 cm, and the thoracic cross-sectional area 1 cm below the top of aortic arch was 87.57 ± 10.47 cm<sup>2</sup>/m<sup>2</sup>.

The HRCT features in individual patients were as shown in Table 2. Saber-sheath trachea described as when tracheal index was less than 0.67 was found in 14 patients. Abnormal thoracic cage ratio was more common at 5 cm below carina (11 patients) than at carina (5 patients). Sterno-aortic distance over 4 cm was found in 5 patients. Large ratio of thoracic cross-sectional area/ht<sup>2</sup> was present in 28 patients. Among subjective findings, presence of directly visible small airways was the most common finding, followed by vascular attenuation and mosaic attenuation pattern [Figure 1]. Vascular distortion was present only in 8 patients. Vascular distortion and mosaic attenuation pattern were coexisting with vascular attenuation.

**Table 1: Group data of COPD patients**

Parameter	Minimum	Maximum	Mean	SD
Age, years	40	75	58.55	7.99
Duration-illness, years	2	25	12.63	6.76
Dyspnea scale	2	5	3.65	0.92
Pack years	20	74	33.25	10.71
PEFR, litre/sec	1.5	6.9	3.18	1.38
FEV <sub>1</sub> , litre	0.58	2.90	1.30	0.61
FVC, litre	1.12	4.30	2.53	0.82
FEV <sub>1</sub> /FVC ratio	29	68	50.75	11.22
SVC, litre	1.2	4.4	2.62	0.81
FEV <sub>1</sub> /SVC ratio	29	68	48.54	10.96
O <sub>2</sub> Saturation, %	88.5	98.6	95.15	2.51
AQ30 score	14	27	20.98	3.41
Tracheal index	0.46	0.94	0.67	0.09
Thoracic cage ratio at carina	61.11	78.10	69.69	4.31
Thoracic cage ratio at 5 cm below carina	62.31	83.08	73.27	4.51
Sterno-aortic distance, cm	1.43	4.55	3.00	0.86
Thoracic cross section Area/ht <sup>2</sup> , cm <sup>2</sup> /m <sup>2</sup>	61.8	104.5	87.57	10.47

**Table 2: HRCT features in individual patients (n = 40)**

HRCT features	Number of patients	Percentage of patients
Saber sheath trachea with tracheal index <0.67	14	35.0
Thoracic cage ratio >0.75 at Carina	5	12.5
Thoracic cage ratio >0.75 at 5 cm below carina	11	27.5
Sterno-aortic distance >4 cm	5	12.5
Thoracic cross-sectional area/ht <sup>2</sup> >80.00 cm <sup>2</sup> /m <sup>2</sup>	28	70.0
Vascular attenuation	25	62.5
Vascular distortion	8	20.0
Mosaic attenuation pattern	16	40.0
Directly visible small airways	36	90.0
Centriacinar emphysema	16	40.0
Panacinar emphysema	11	27.5
Paraseptal emphysema	13	32.5
Any type of emphysema	25	62.5

Among the three types of emphysema, centriacinar emphysema was observed most frequently (16 patients, 40%), followed by distal acinar (13 patients, 32.5%) and panacinar emphysema (11 patients, 27.5%) [Figure 2]. Twenty-five (62.5%) patients had at least one type of emphysema.

Various HRCT features suggestive of hyperinflation of thoracic cage were evaluated for their possible correlation with patients' characteristics, and the results in detail are displayed in Table 3. Tracheal index was observed to have a highly significant negative correlation with age, duration of illness, pack years, dyspnea scale, and AQ30 score. It had a highly positive correlation with FEV<sub>1</sub>, FEV<sub>1</sub>/FVC ratio, and FEV<sub>1</sub>/SVC ratio; the correlation with PEFr was also significant. Thoracic cage ratio at carina and the thoracic cage ratio at 5 cm below carina had a highly positive correlation with age, duration of illness, pack years, dyspnea scale, and AQ30 score; they had highly negative correlation with FEV<sub>1</sub>, FEV<sub>1</sub>/FVC ratio, and FEV<sub>1</sub>/SVC ratio. Similarly, sterno-aortic distance and thoracic cross-sectional area had a highly positive correlation with age,

duration of illness, pack years, dyspnea scale, and AQ30 score; they had highly negative correlation with FEV<sub>1</sub>, FEV<sub>1</sub>/FVC ratio, and FEV<sub>1</sub>/SVC ratio.

Details of correlation between qualitative HRCT features and the patients' characteristics were as shown in Table 4. The vascular attenuation had a significant correlation with age of the patients, duration of illness, dyspnea scale, smoking pack years, FEV<sub>1</sub>, FEV<sub>1</sub>/FVC ratio, and FEV<sub>1</sub>/SVC ratio. Vascular distortion had no significant correlation with any parameter. The mosaic attenuation pattern correlated significantly with duration of illness, dyspnea scale, smoking pack years, FEV<sub>1</sub>, FEV<sub>1</sub>/FVC ratio, and FEV<sub>1</sub>/SVC ratio. Correlation of presence of directly visible small airways was statistically significant only with dyspnea scale. Centriacinar emphysema had statistically significant correlation with PEFr, FEV<sub>1</sub>, FVC, FEV<sub>1</sub>/FVC ratio, and FEV<sub>1</sub>/SVC ratio. Correlation of presence of any type of emphysema with age, duration, dyspnea scale, pack years, PEFr, FEV<sub>1</sub>, FVC, FEV<sub>1</sub>/FVC ratio, and FEV<sub>1</sub>/SVC ratio was significant.

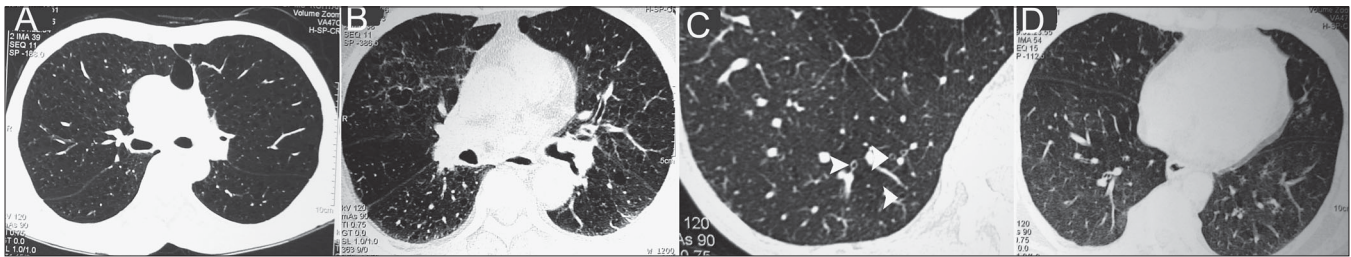


Figure 1: HRCT features in COPD: (A) Vascular attenuation, (B) vascular distortion and increased branching angle, (C) directly visible small airways as ring shadows (white arrowheads), and (D) mosaic attenuation pattern

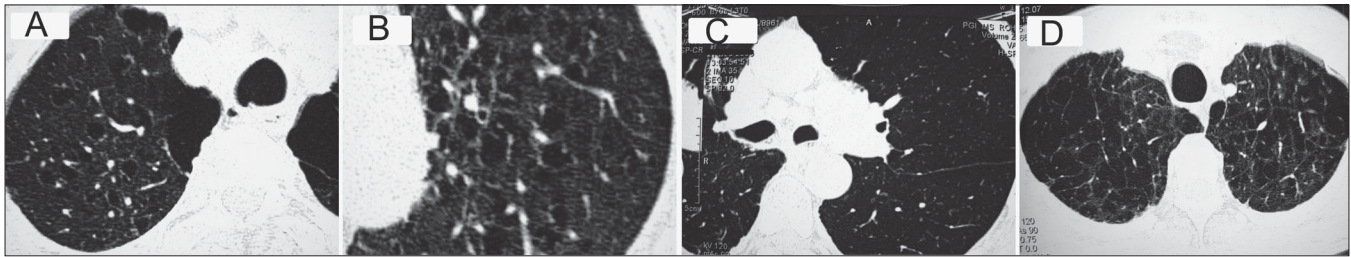


Figure 2: HRCT features in COPD subject showing (A and B) Centriacinar emphysema, (C) panacinar emphysema, and (D) paraseptal emphysema

Table 3: Statistical significance [*P* value] of correlation between quantitative HRCT features and study variables (significant correlations are shown in bold)

Parameters	Tracheal index	Thoracic cage ratio at carina	Thoracic cage ratio at 5 cm below carina	Sterno-aortic distance	Thoracic cross sectional area
Age	<0.001	<0.001	<0.001	<0.001	<0.001
Duration of illness	<0.001	<0.001	<0.001	<0.001	<0.001
Dyspnea scale	<0.001	<0.001	<0.001	<0.001	<0.001
Pack years	0.001	<0.001	0.001	<0.001	<0.001
PEFR	0.011	0.011	0.005	0.034	<0.001
FEV <sub>1</sub>	<0.001	<0.001	<0.001	<0.001	<0.001
FVC	0.328	0.098	0.063	0.153	0.006
FEV <sub>1</sub> /FVC ratio	<0.001	<0.001	<0.001	<0.001	<0.001
SVC	0.224	0.078	0.041	0.115	0.005
FEV <sub>1</sub> /SVC ratio	<0.001	<0.001	<0.001	<0.001	<0.001
O <sub>2</sub> Saturation	0.785	0.825	0.785	0.959	0.427
AQ30 score	<0.001	<0.001	<0.001	<0.001	<0.001

**Table 4: Statistical significance [P value] of correlation between qualitative HRCT features and study variables (significant correlations are shown in bold)**

Parameters	Vascular attenuation	Vascular distortion	Mosaic attenuation pattern	Directly visible small airways	Centriacinar emphysema	Panacinar emphysema	Distal acinar emphysema	Any type of emphysema
Age	0.032	0.396	0.051	0.100	0.182	0.029	0.404	0.032
Duration of illness	0.020	0.098	0.02	0.116	0.061	0.186	0.054	0.020
Dyspnea scale	0.004	0.156	0.003	0.006	0.107	0.173	0.175	0.004
Pack years	0.049	0.206	0.012	0.898	0.347	0.120	0.170	0.049
PEFR	0.050	0.279	0.042	0.957	0.042	0.054	0.081	0.050
FEV <sub>1</sub>	0.044	0.446	0.047	0.801	0.049	0.304	0.279	0.044
FVC	0.045	0.444	0.108	0.918	0.017	0.133	0.120	0.045
FEV <sub>1</sub> /FVC ratio	0.031	0.220	0.048	0.885	0.048	0.060	0.185	0.031
SVC	0.072	0.744	0.269	0.521	0.269	0.321	0.350	0.072
FEV <sub>1</sub> /SVC ratio	0.024	0.055	0.037	0.564	0.047	0.062	0.073	0.024
O <sub>2</sub> Saturation	0.060	0.610	0.072	0.937	0.099	0.108	0.101	0.060
AQ30 score	0.120	0.172	0.197	0.07	0.085	0.501	0.078	0.120

## Discussion

Chronic obstructive pulmonary disease (COPD) is a preventable and treatable disease, with some significant extrapulmonary effects that may contribute to the severity in individual patients. Its pulmonary component is characterized by airflow limitation that is not fully reversible. It is a disease state that has seen significant changes in defining and excluding criteria over the past 50 years<sup>[1]</sup>; and as a result, some of the earlier studies are not expected to have inclusion criteria of COPD patients as per recent guidelines. There have been lots of variations in the patients' characteristics included in various previous studies. Many studies had selected patients with emphysema only.<sup>[11,12]</sup> Some studies<sup>[13-17]</sup> did not have reversibility criteria in accordance with Global Initiative for Chronic Obstructive Lung Disease (GOLD) guidelines. In the present study, all subjects included were smokers and had irreversible or partially reversible airflow limitation, as required for the diagnosis of COPD. The patients having poorly reversible airflow limitation observed in bronchiectasis, cystic fibrosis, tuberculosis, or asthma were not included. This might have led to some variation in the outcome of our study, but the present study has clinical relevance as the diagnosis of COPD was based on the clinical and the spirometric criteria that are invariably used in clinical practice.

We studied the HRCT features which comprised of quantitative and qualitative parameters. Various studies had evaluated quantitative parameters, including tracheal index, sterno-aortic distance, thoracic cage ratio, and thoracic cross-sectional area, that are suggestive of hyperinflated lungs and rib cage seen in COPD. We observed that all these quantitative parameters were correlated significantly with age, duration of illness, dyspnea score, smoking pack years, PEFR, FEV<sub>1</sub>, FEV<sub>1</sub>/FVC ratio, FEV<sub>1</sub>/SVC ratio, and health-related quality-of-life (AQ30) score. No significant correlation was noted with oxygen saturation, which probably was due to the fact that the patients included were having stable course of COPD; 34/40 patients had normal oxygen saturation. Trigaux and co-workers<sup>[18]</sup> found significant correlation of tracheal index with FEV<sub>1</sub>, FRC, and sterno-spine distance. In a different study, saber-sheath trachea was established as a specific radiographic diagnostic parameter in diagnosis of COPD (specificity, 92.9%), although the sensitivity (39.1%) was low.<sup>[14]</sup> We found saber-

sheath trachea in 14/40 patients (sensitivity 35%). In a study by Arakawa, tracheal index, thoracic cage ratio, and sterno-aortic distance were significantly correlated with FEV<sub>1</sub>/FVC ratio in 74 patients (44 with normal lung function, 30 with COPD).<sup>[19]</sup> One study<sup>[20]</sup> showed a good correlation between thoracic cross-sectional area and total lung capacity, functional residual capacity, residual volume, as well as Fletcher's five-degree scale of dyspnea.

In our study, presence of vascular attenuation correlated significantly with duration of illness, smoking pack years, dyspnea score, FEV<sub>1</sub>, FEV<sub>1</sub>/FVC ratio, and FEV<sub>1</sub>/SVC ratio. In a study by Kuwano and co-workers, CT score was assessed by examining low attenuation areas, vascular attenuation, and distortion;<sup>[21]</sup> it correlated significantly with DL<sub>CO</sub>, FEV<sub>1</sub>/VC ratio, maximum mid-expiratory flow rate, and residual volume/total lung capacity. In another study by MacNee *et al.*, vascular attenuation and distortion on CT scans of 32 patients correlated significantly with DL<sub>CO</sub>, FEV<sub>1</sub>% predicted, and FEV<sub>1</sub>/FVC%.<sup>[22]</sup>

In the present study, no significant correlation was observed between vascular distortion and various spirometric indices; however, vascular distortion was absent in all 20 patients who had FEV<sub>1</sub>/FVC > 50%. Absence of significant correlation was possibly because we had not carried out grading of vascular distortion. Other studies have found good correlation of grading of vascular distortion with pulmonary function tests.<sup>[21,22]</sup> It appears from findings of our study and other studies that vascular distortion is present in very advanced cases of emphysema and in those with severely deranged pulmonary functions.

As per study protocol, we studied for mosaic attenuation pattern at end-inspiration. Mosaic attenuation is more pronounced on scans obtained at end-exhalation compared to that found at end-inspiration as in the more conventional end-inspiration technique.<sup>[16]</sup> This is the probable reason for the detection of mosaic attenuation pattern in only 16 (40%) out of 40 patients in the present study. All these 16 patients had associated features of vascular attenuation and directly visible small airways. Presence of this feature correlated significantly with duration of illness, smoking pack years, dyspnea score, PEFR, FEV<sub>1</sub>, FEV<sub>1</sub>/FVC ratio, and FEV<sub>1</sub>/SVC ratio. Mosaic

attenuation pattern in association with other HRCT features is observed to be helpful in distinguishing different disease entities grouped under COPD.<sup>[17]</sup>

In our study, directly visible small airways were observed as the most prevalent HRCT feature (36/40 patients). Hogg *et al.* showed that despite a decreased radius of small airways, airflow resistance is not significantly increased because of the large number of these peripheral bronchioles.<sup>[23]</sup> Hence noteworthy disease must be present at the level of peripheral airways, to be detected on conventional pulmonary function tests.<sup>[24]</sup> Here, HRCT can play an infallible role in a diagnosis of involvement of small airways.

Low attenuation areas due to emphysema were seen by us in 25/40 (62.5%) patients. The presence of this feature correlated significantly with age of patient, duration of illness, smoking pack years, dyspnea score, and spirometric indices. The emphysematous features had upper lobe predominance, explained by the fact that all patients were moderate-to-heavy smokers. In a study by Miniati *et al.*, the HRCT score based on the extent of emphysema correlated with FEV<sub>1</sub>, FVC, forced mid-expiratory flows, maximum flows at 50% and 75% of FVC, residual volume, total lung capacity, and diffusion constant.<sup>[25]</sup> Klein *et al.*<sup>[12]</sup> observed that centriacinar emphysema was the dominant parenchymal abnormality and was strongly correlated with DL<sub>CO</sub>. Similarly, emphysema on CT was observed to be correlated with FEV<sub>1</sub> and K<sub>CO</sub> in 20 patients.<sup>[26]</sup>

We could find only one previous study which explored correlation between HRCT features of emphysema and HRQL.<sup>[27]</sup> This study used St. George's Respiratory Questionnaire scores and the SF-36 to measure HRQL in patients with alpha<sub>1</sub>-antitrypsin deficiency and found clear relationship between emphysema measured by lung density and HRQL. Our study measured HRQL by using AQ30 in COPD patients and found significant correlation with all measured parameters of lung hyperinflation. In comparison to time-consuming and complicated instruments to measure HRQL, AQ30 included in the present study took significantly less time to complete and score.

To conclude, in the present study, we were able to detect significant correlations between various quantitative HRCT features and patients' characteristics, spirometric indices, as well as health-related quality-of-life score. Moreover, significant correlations were observed using qualitative HRCT features. This suggests that HRCT is helpful not only in detecting emphysema and its various subtypes but also in predicting the extent and severity of the COPD.

## References

1. Global Initiative for Chronic Obstructive Lung Disease. Global Strategy for the Diagnosis, Management, and Prevention of Chronic Obstructive Pulmonary Disease. Executive Summary, 2006. Available from: <http://goldcopd.com/guidelineslist.asp>. [last accessed on 2007 Mar 23].
2. Macklem PT, Hogg JC, Thurlbeck WM. The flow resistance of central and peripheral airways in human lungs. In: Cumming G, Hunt LB, editors. Form and function in the human Lung. Edinburgh: Livingstone; 1967. p. 76.
3. Pauwels R, Anthonisen N, Bailey WC, Barnes PJ, Buist AS, Catverley P, *et al.* Global strategy for the diagnosis, management, and prevention of chronic obstructive pulmonary disease: National Heart, Lung and Blood Institute and World Health Organization Global Initiative for Chronic Obstructive Lung Disease (GOLD) Executive Summary. *Respir Care* 2001;46:798-825.
4. Halpin D, Pamham J, Reid K, Stevens K, Ballamy D, Booker J, *et al.* National clinical guideline on management of chronic obstructive pulmonary diseases in adults in primary and secondary care: Diagnosing COPD. *Thorax* 2004;59:27-37.
5. Prignat J. Quantification and Chemical markers of tobacco-exposure. *Eur J Respir Dis* 1987;70:1-7.
6. Gupta D, Boffeta P, Gaborieau V, Jindal SK. Risk factors of lung cancer in Chandigarh, India. *Indian J Med Res* 2001;113:142-50.
7. Wood DM, Mould MG, Ong SB, Baker EH. "Pack year" smoking histories: What about patients who use loose tobacco. *Tobacco Control* 2005;14:141-2.
8. Lindberg A, Jonsson AC, Ronmark E, Lundgren R, Larsson LG, Lundback B. Ten-year cumulative incidence of COPD and risk factors for incident disease in a symptomatic cohort. *Chest* 2005;127:1544-52.
9. Quirk FH, Jones PW. Repeatability of two new short airways questionnaires. *Thorax* 1994;49:1075.
10. Hajiro T, Nishimura K, Jones PW, Tsukino M, Ikeda A, Koyama H, *et al.* A novel, short and simple questionnaire to measure health related quality of life in patients with chronic obstructive pulmonary disease. *Am J Respir Crit Care Med* 1999;159:1874-8.
11. Hagen G, Kolenstvedt A. CT measurement of mediastinal anterior junction line in emphysema patients. *Acta Radiologica* 1993;34:194-5.
12. Klein JS, Gamsu G, Webb WR, Golden JA, Muller NL. High resolution CT diagnosis of emphysema in symptomatic patients with normal chest radiographs and isolated low diffusing capacity. *Radiology* 1992;182:817-21.
13. Muro S, Nakano Y, Sakai H, Takubo Y, Oku Y, Chin K, *et al.* Distorted trachea in patients with chronic obstructive pulmonary disease. *Respiration* 2000;67:638-44.
14. Tsao TC, Shieh WB. Intrathoracic tracheal dimensions and shape changes in chronic obstructive pulmonary disease. *J Formos Med Assoc* 1994;93:30-4.
15. Pierce JA, Ebert RV. The barrel deformity of the chest, the senile lung and obstructive pulmonary emphysema. *Am J Med* 1958;25:13-22.
16. Arakawa H, Webb WR. Air trapping on expiratory high resolution CT scans in the absence of inspiratory scan abnormalities: Correlation with pulmonary function tests and differential diagnosis. *AJR Am J Roentgenol* 1998;170:1349-53.
17. Copley SJ, Wells AU, Muller NL, Rubens MB, Hollings NP, Cleverley JR, *et al.* Thin section CT in obstructive pulmonary disease: Discriminatory value. *Radiology* 2002;223:812-9.
18. Trigaux JP, Hermes G, Dubois P, Van Beers B, Delaunois L, Jamart J. CT of saber-sheath trachea: Correlation with clinical, chest radiographic and functional findings. *Acta Radiol* 1994;35:247-50.
19. Arakawa H, Kurihara Y, Nakajima Y, Niimi H, Ishikawa T, Tokuda M. Computed tomography measurements of overinflation in chronic obstructive pulmonary disease: Evaluation of various radiographic signs. *J Thorac Imaging* 1998;13:188-92.
20. Kasai T, Yamada M, Narushima M, Suzuki H. Relationship between thoracic cross-sectional area measured on CT and pulmonary function or dyspnea in patients with COPD. *Nihon Kokyukai Gakkai Zasshi* 2003;41:526-30.
21. Kuwano K, Matsuba K, Ikeda T, Murakami J, Araki A,

- Nishitani H, *et al.* The diagnosis of mild emphysema: Correlation of computed tomography and pathology scores. *Am Rev Respir Dis* 1990;141:169-78.
22. MacNee W, Gould G, Lamb D. Quantifying emphysema by CT scanning: clinical-pathological correlates. *Ann NY Acad Sci* 1991;624:179.
23. Hogg JC, Macklem PT, Thurlbeck WM. Site and nature of airway obstruction in chronic obstructive lung disease. *N Engl J Med* 1968;268:1355-60.
24. Teel GS, Engeler CE, Tashjian JH. Imaging of small airways disease. *Radiographics* 1996;16:27-41.
25. Miniati M, Filippi E, Falaschi F, Carrozzi L, Milne EN, Sostman ND, *et al.* Radiologic evaluation of emphysema in patients with chronic obstructive pulmonary disease: Chest radiography versus high resolution computed tomography. *Am J Respir Crit Care Med* 1995;151:1359-67.
26. Muller NL, Staples CA, Miller RR. "Density mask": An objective method to quantitate emphysema using computed tomography. *Chest* 1988;94:782-7.
27. Dowson LJ, Guest PJ, Hill SL, Holder RL, Stockley RA. High-resolution computed tomography scanning in  $\alpha_1$ -antitrypsin deficiency: Relationship to lung function and health status. *Eur Respir J* 2001;17:1097-104.

**Source of Support:** Nil, **Conflict of Interest:** None declared.

### Author Help: Reference checking facility

The manuscript system ([www.journalonweb.com](http://www.journalonweb.com)) allows the authors to check and verify the accuracy and style of references. The tool checks the references with PubMed as per a predefined style. Authors are encouraged to use this facility before submitting articles to the journal.

- The style as well as bibliographic elements should be 100% accurate to get the references verified from the system. A single spelling error or addition of issue number / month of publication will lead to error to verifying the reference.
- Example of a correct style  
Sheahan P, O'leary G, Lee G, Fitzgibbon J. Cystic cervical metastases: Incidence and diagnosis using fine needle aspiration biopsy. *Otolaryngol Head Neck Surg* 2002;127:294-8.
- Only the references from journals indexed in PubMed would be checked.
- Enter each reference in new line, without a serial number.
- Add up to a maximum 15 reference at time.
- If the reference is correct for its bibliographic elements and punctuations, it will be shown as CORRECT and a link to the correct article in PubMed will be given.
- If any of the bibliographic elements are missing, incorrect or extra (such as issue number), it will be shown as INCORRECT and link to possible articles in PubMed will be given.