

## Overexpression of the Natural Inhibitor of Cysteine Peptidases in *Leishmania mexicana* Leads to Reduced Virulence and a Th1 Response<sup>∇</sup>

Karen Bryson,<sup>1†</sup> Sébastien Besteiro,<sup>2‡</sup> H. Adrienne McGachy,<sup>1</sup> Graham H. Coombs,<sup>1</sup> Jeremy C. Mottram,<sup>2</sup> and James Alexander<sup>1\*</sup>

Strathclyde Institute of Pharmacy and Biomedical Sciences, University of Strathclyde, The John Arbuthnott Building, 27 Taylor St., Glasgow G4 0NR, United Kingdom,<sup>1</sup> and Wellcome Centre for Molecular Parasitology and Division of Infection and Immunity, Glasgow Biomedical Research Centre, University of Glasgow, 120 University Place, Glasgow G12 8TA, United Kingdom<sup>2</sup>

Received 7 May 2008/Returned for modification 19 June 2008/Accepted 23 April 2009

*Leishmania mexicana* cysteine peptidases (CPs) have been identified as important parasite virulence factors. More recently, a natural inhibitor of CPs (ICP) from *L. mexicana* has been characterized, and ICP mutants have been created. Infection of BALB/c mice with ICP null mutants or ICP reexpressing mutants resulted in nonhealing, progressively growing lesions albeit slightly attenuated compared with the growth of lesions produced by wild-type parasites. In contrast, BALB/c mice infected with mutants overexpressing ICP were able to significantly control lesion growth or heal. While BALB/c mice infected with wild-type parasites, ICP null mutants, or ICP reexpressing mutants produced significant antibody responses, including immunoglobulin E (IgE), no Th1 response, as indicated by antigen-induced splenocyte gamma interferon (IFN- $\gamma$ ) production, could be demonstrated. In contrast, BALB/c mice infected with mutants overexpressing ICP produced significantly less antibody, particularly IgE, as well as significantly reduced splenocyte interleukin-4 and enhanced IFN- $\gamma$  production. BALB/c mice were able to resolve infection following infection with one ICP overexpressing clone, which was subsequently used for vaccination studies with BALB/c mice. However, no protection was afforded these mice when they were challenged with wild-type parasites. Nevertheless, two other mouse strains susceptible to *L. mexicana*, C3H and C57BL/6, vaccinated with overexpressing ICP mutants were able to control challenge infection associated with an enhanced Th1 response. This study confirms that *L. mexicana* CPs are virulence factors and that ICPs have therapeutic potential.

Leishmaniasis encompasses a large spectrum of clinical diseases which, depending upon the parasite species and the host's immune response, can have various outcomes (16). Our understanding of the factors that lead to this diversity of clinical symptoms has, in large part, come from studies using murine models and particularly *Leishmania major*. While the majority of mouse strains can control infection with *L. major*, virtually all develop nonhealing lesions full of parasites when infected cutaneously with *L. mexicana* (4). Studies with the BALB/c mouse have indicated that the nonhealing response of this mouse strain to infection with *L. major* is LACK antigen dependent (13), while the nonhealing response to *L. mexicana* is independent of this antigen (27). Conversely, our studies have implicated cysteine peptidases (CPs) as major virulence factors for *L. mexicana* (reviewed in reference 17). Information about the apparent functions and importance of CPs in the host-parasite interaction was obtained via the generation of mutants deficient in the *CPA* and *CPB* genes ( $\Delta cpa$  and  $\Delta cpb$  mutants). *L. mexicana* mutants deficient in the multicopy *CPB*

gene array ( $\Delta cpb$  mutants) have reduced virulence, with poor lesion growth, for BALB/c mice (2, 18). Only the reexpression of multiple *CPB* genes from a cosmid significantly restored virulence (8), suggesting that the multiple genes have complementary functions. *CPA CPB* double null mutant parasites ( $\Delta cpa \Delta cpb$  mutants) were less infective for BALB/c mice than  $\Delta cpb$  mutants (2, 18), which not only implicates *CPA* as a virulence factor but also indicates that there is some redundancy in function between *CPA* and *CPB*. *CPA*, together with *CPB1* and *CPB2* (the *CPB* isoforms encoded by the first 2 genes of the 19-gene *CPB* tandem array), is expressed in metacyclic promastigotes, suggesting roles for these CPs in the virulence of this life cycle stage. Indeed, the *L. mexicana*  $\Delta cpa \Delta cpb$  mutants are defective in metacyclogenesis, due to an impairment of autophagy-dependent protein turnover required for differentiation (28).

Small-molecule inhibitors of *CPB* have some efficacy against *Leishmania*, both in vitro and in vivo (24). These inhibitors are thought to be active against not only *CPB* but also *CPA* and *CPC*, and their toxicity to *Leishmania* may be a consequence of the inhibition of multiple enzymes. Nevertheless, these results confirm the importance of CPs in the host-parasite interaction. Treatment with a natural CP inhibitor, cystatin, promoted a protective response against *Leishmania* infection and a switch from a predominately Th2 to a Th1 response (7). *Leishmania* lacks cystatins, but the parasite possesses an unusual inhibitor of CPs (designated ICP), which does not occur in mammals (22). *Leishmania* ICP has been shown to be a potent inhibitor

\* Corresponding author. Mailing address: Strathclyde Institute of Pharmacy and Biomedical Sciences, University of Strathclyde, The John Arbuthnott Building, 27 Taylor St., Glasgow G4 0NR, United Kingdom. Phone: 44 141 548 3925. Fax: 44 141 552 3562. E-mail: j.alexander@strath.ac.uk.

† Both authors contributed equally to the study.

‡ Present address: UMR CNRS 5235, Université de Montpellier 2, Montpellier F-34095, France.

<sup>∇</sup> Published ahead of print on 11 May 2009.

of clan CA, family C1 CPs, such as CPB and mammalian cathepsin L (22), and the structure has recently been solved by nuclear magnetic resonance (25). Analysis of *L. mexicana* mutants lacking ICP implicated the inhibitor in the host-parasite interaction (3), but whether ICP plays an influential immune modulatory role awaited examination. The present study used ICP null mutants ( $\Delta icp$  mutants), ICP reexpressing parasites in which ICP had been expressed in the null mutant ( $\Delta icp::P_{rRNA-ICP}$ ), and null mutant parasites overexpressing ICP ( $\Delta icp[pXG ICP]$ ) to determine the influence of ICP on the immune response and developing disease phenotype. Significantly, while ICP-deficient parasites remained comparatively virulent, ICP mutants overexpressing ICP did not promote significant lesion growth in BALB/c mice and developed a Th1 response. The vaccine potential of the mutant parasites was subsequently examined.

## MATERIALS AND METHODS

**Generation of *L. mexicana*  $\Delta icp$  null mutant promastigotes reexpressing and overexpressing ICP.** All ICP transgenic cell lines were generated as described by Besteiro, Coombs, and Mottram (3). They include two independent ICP null mutants ( $\Delta icp1$  and  $\Delta icp3$  mutants), where the two alleles coding for the gene were replaced by selection markers using homologous recombination. Clones of the mutants were subsequently used to produce reexpressing cell lines. One had an integrated single-gene copy at the rRNA locus conferring expression in both amastigote and promastigote stages of the parasite (i.e.,  $\Delta icp::P_{rRNA-ICP}$ ) and providing a level of expression of ICP similar to that of wild-type parasites. The second had extrachromosomal expression of ICP, via the pXG multicopy expression plasmid, to yield ICP overexpressing cell lines ( $\Delta icp[pXG ICP]$ ).

**Culture of mutant parasites.** *L. mexicana* (MNYC/BZ/M379) promastigotes were cultured at 25°C in modified Eagle's medium (Invitrogen, Paisley, United Kingdom) with 10% (vol/vol) heat-inactivated fetal calf serum (Harlan Sera-Lab, United Kingdom). The appropriate antibiotics were then added to the culture to select the mutant parasites as previously described (3).

**Western blotting.** Western blotting was carried out as previously described (3). Affinity-purified antiserum specific for *L. mexicana* ICP was prepared as previously described (22). A 1:1,000 dilution of the affinity-purified anti-ICP antibody and a 1:10,000 dilution of mouse monoclonal anti-*Trypanosoma brucei* elongation factor 1 $\alpha$  (Upstate/Millipore) were applied, followed by a 1:5,000 dilution of secondary antibody conjugated to horseradish peroxidase.

**Mice.** BALB/c mice were obtained from Harlan UK Limited (Oxon, United Kingdom) and were bred in-house under barrier conditions. C3H and C57BL/6 mice were purchased from Harlan UK Limited (Oxon, United Kingdom) and maintained in a specific-pathogen-free environment. Animal experiments were performed in accordance with United Kingdom Home Office guidelines.

***L. mexicana* infections.** Groups of at least five 6- to 8-week-old female mice were inoculated subcutaneously with  $2 \times 10^5$  to  $5 \times 10^5$  stationary-phase promastigotes grown in modified Eagle's medium into the hind footpad. The lesion size was monitored weekly using a sliding-gauge micrometer. Lesions were excised from *L. mexicana*-infected mice at the termination of experiments and disrupted through a metal mesh with 5 ml of RPMI 1640 (Cambrex Bio Science Verviers, Belgium). The parasites were washed twice at  $350 \times g$  in RPMI and enumerated using an improved Neubauer hemocytometer as previously described (3).

**Vaccination studies.** Groups of at least five 6- to 8-week-old female BALB/c, C3H, and C57BL/6 mice were vaccinated subcutaneously with  $2 \times 10^5$  to  $5 \times 10^5$   $\Delta icp1[pXG ICP]$  or  $\Delta icp3[pXG ICP]$  parasites into the left hind footpad in RPMI 1640. At 14 weeks postvaccination, mice were challenged with  $2 \times 10^5$  to  $5 \times 10^5$  wild-type *L. mexicana* metacyclic promastigotes in RPMI 1640 subcutaneously into the right hind footpad. The lesion size was monitored weekly using a sliding-gauge micrometer.

**Splenocyte stimulation and cytokine detection.** Splenocytes were isolated from infected mice and cultured for 72 h in 96-well plates in the presence or absence of *L. mexicana* antigenic lysate or 0.5  $\mu\text{g/ml}$  anti-CD3 (C363.29B; Southern Biotechnology Associates Inc., AL) as previously described (1, 23). Gamma interferon (IFN- $\gamma$ ) levels in the supernatants were detected by capture enzyme-linked immunosorbent assay (ELISA). Briefly, the wells of Immulon 1B flat-bottomed microtiter plates (ThermoLabsystems, MA) were coated with 50  $\mu\text{l}$  of

1  $\mu\text{g/ml}$  purified anti-mouse IFN- $\gamma$  capture antibody R4-6A2 (PharMingen; supplied by Insight Biotechnology, Wembley, United Kingdom) in phosphate-buffered saline (PBS) (pH 9.0) or 500 ng/ml interleukin-4 (IL-4) capture antibody 11B11 (PharMingen) overnight at 4°C. Supernatants were then added to the individual wells, and either 30  $\mu\text{l}$  recombinant mouse IFN- $\gamma$  (R&D Systems Europe, Abingdon, United Kingdom) or recombinant mouse IL-4 (Genzyme, Cambridge, United Kingdom) was added to individual wells in duplicate in a doubling dilution with a solution of pH 7.4 PBS supplemented with 10% (vol/vol) fetal calf serum (Harlan Sera-Lab, Crawley, United Kingdom), ranging from 20 ng ml $^{-1}$  to 0.01 ng ml $^{-1}$  (IFN- $\gamma$ ) or 2 ng ml $^{-1}$  to 0.977 pg ml $^{-1}$  (IL-4). The plates were then incubated for 2 h at 37°C. The bound cytokines were incubated with either biotin rat anti-mouse IFN- $\gamma$  monoclonal antibody XMG1.2 (PharMingen) or biotin rat anti-mouse IL-4 antibody BVD6-24G2 (PharMingen) and detected with either conjugated streptavidin-alkaline phosphatase or conjugated streptavidin-horseradish peroxidase (PharMingen), respectively. The respective substrate, *p*-nitrophenyl-phosphate (Sigma-Aldrich, Poole, United Kingdom) or tetramethylbenzidine in pH 5.5 sodium acetate buffer containing 0.0003% hydrogen peroxide (BDH, Poole), was then added to the wells. Finally, the plates were read at an absorbance of 405 nm for IFN- $\gamma$  or at 450 nm for IL-4.

**Detection of *L. mexicana*-specific IgG1, IgG2a, and total IgE.** *L. mexicana*-specific immunoglobulin G1 (IgG1) and IgG2a in the plasma of infected mice were detected by ELISA as previously described (1, 23). Briefly, Immulon 1B flat-bottomed microtiter plates were coated with 100  $\mu\text{l}$  10  $\mu\text{g/ml}$  *L. mexicana* lysate (lysate was prepared as previously described [23]) in PBS (pH 9.0) overnight at 4°C. Plasma samples were serially diluted in duplicate, followed by a 1-h incubation at 37°C. Bound *Leishmania*-specific antibodies were detected with a 1-h incubation with horseradish peroxidase-conjugated goat anti-mouse IgG1 (Southern Biotechnology Associates Inc., AL) or horseradish peroxidase-conjugated goat anti-mouse IgG2a (Southern Biotechnology Associates Inc., AL). The substrate tetramethylbenzidine in pH 5.5 sodium acetate buffer containing 0.0003% hydrogen peroxide (BDH, Poole) was then added to the wells, and following color development, the reaction of the substrate with the conjugated horseradish peroxidase was stopped by the addition of 10% sulfuric acid to the wells. The absorbance was then measured at 450 nm using a plate reader with SOFTmax PRO software (Molecular Devices), and the endpoint dilution was determined. Total IgE in the plasma of infected mice was detected by capture ELISA as previously described (23), using R35-72 capture IgE monoclonal antibody (PharMingen) and biotinylated rat anti-mouse IgE (Southern Biotechnology Associates). Antibody titers were compared using the Mann-Whitney U test, and all other comparisons were made using the Student *t* test.

**IFN- $\gamma$  depletion and parasite enumeration.** In vivo depletion of IFN- $\gamma$  was achieved by the intraperitoneal inoculation of 150  $\mu\text{g}$  rat hybridoma R4-6A2 (PharMingen) on day 0 and on days 4 and 8 postinfection of mice with  $5 \times 10^6$  *L. mexicana* amastigotes into the footpad. Three animals comprised each experimental group, and four samplings were taken from each footpad. Parasite numbers were quantified by limiting dilution as previously described (6).

## RESULTS

**Western blot analysis of ICP mutant *L. mexicana* stationary-phase promastigotes.** ICP null mutants were produced as described previously (3), and two independent clones ( $\Delta icp1$  and  $\Delta icp3$  mutants) were isolated. The two clones were used for producing ICP overexpressing cell lines ( $\Delta icp1[pXG ICP]$  and  $\Delta icp3[pXG ICP]$ ), whereas clone 1 only was used to produce a cell line reexpressing the protein from a single ICP copy integrated in its genome ( $\Delta icp::P_{rRNA-ICP}$ ). The expression of ICP in stationary-phase promastigotes from wild-type and transgenic *L. mexicana* cell lines was assessed by Western blot analysis (Fig. 1). This confirmed that no ICP was present in  $\Delta icp1$  and  $\Delta icp3$  promastigotes. Expression of ICP in the  $\Delta icp::P_{rRNA-ICP}$  mutant was similar to that in the wild type, whereas  $\Delta icp1[pXG ICP]$  and  $\Delta icp3[pXG ICP]$  had a significantly higher level of ICP expression (~5-fold increase) (Fig. 1).

***L. mexicana* mutants overexpressing ICP have significantly reduced virulence for BALB/c mice.** Rapidly growing, nonhealing lesions were induced following inoculation of BALB/c mice with  $5 \times 10^5$  wild-type,  $\Delta icp1$ , and  $\Delta icp3$  stationary-phase pro-

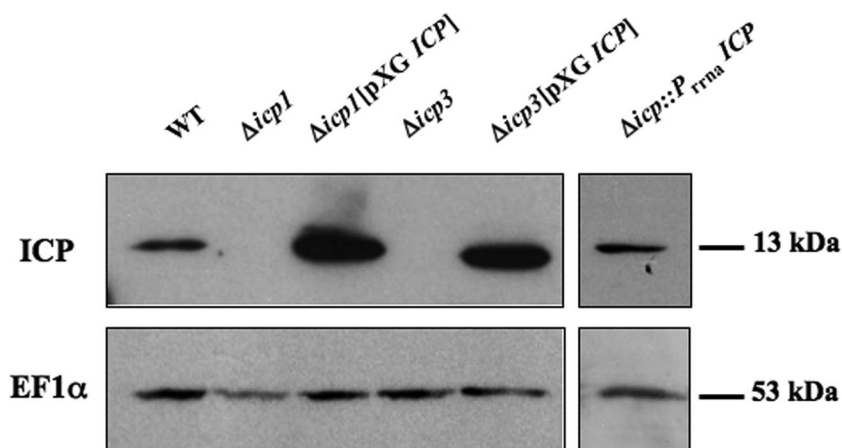


FIG. 1. Western blot analysis of whole-cell lysates prepared from wild-type (WT),  $\Delta icp1$ ,  $\Delta icp3$ ,  $\Delta icp1$ [pXG ICP],  $\Delta icp3$ [pXG ICP], and  $\Delta icp::P_{rRNA}ICP$  stationary-phase *L. mexicana* promastigotes by using affinity-purified antisera raised against ICP and monoclonal antibodies raised against elongation factor 1 $\alpha$  (used as an internal loading control). The equivalent of  $5 \times 10^6$  parasites was loaded per lane for sodium dodecyl sulfate-polyacrylamide gel electrophoresis, and molecular masses of the proteins of interest are indicated on the right.

mastigotes into the hind footpad (Fig. 2a). However, lesion growth was significantly ( $P < 0.05$ ) reduced, from week 8 postinfection, following inoculation with  $\Delta icp1$  and  $\Delta icp3$  parasites compared with that following inoculation with wild-type parasites. Reexpression of the ICP gene with the integrative construct restored some virulence, and 10 weeks elapsed before a significant difference in lesion growth kinetics was observed between BALB/c mice infected with  $\Delta icp::P_{rRNA}ICP$  and those infected with wild-type parasites. Overexpression of ICP resulted in a significant change in disease phenotype: BALB/c mice inoculated with  $\Delta icp3$ [pXG ICP] stationary-phase promastigotes developed small lesions which ceased to grow after week 5, while those infected with  $\Delta icp1$ [pXG ICP] stationary-phase promastigotes apparently resolved infections by week 13. Significantly reduced parasite burdens were also found in the lesions at 13 weeks postinfection of the BALB/c mice infected with  $\Delta icp1$ ,  $\Delta icp3$ ,  $\Delta icp3$ [pXG ICP], and  $\Delta icp::P_{rRNA}ICP$  parasites relative to the parasite burden for those infected with wild-type parasites (Fig. 2b). No parasites could be detected nor promastigotes derived from the site of infection with  $\Delta icp1$ [pXG ICP] stationary-phase promastigotes. When possible, lesion-derived  $\Delta icp3$ [pXG ICP] parasites were differentiated back to promastigotes in vitro without selective pressure and tested for ICP expression by Western blotting. Surprisingly, and in spite of the absence of antibiotic selection within the animal (which could lead to a loss of the plasmid expressing ICP),  $\sim 70\%$  of the clones still expressed ICP, although at a level greatly reduced from the initial level (data not shown). When these parasites were used to infect mice, still in the absence of selection, they were able to produce lesions (data not shown), possibly due to their lowered ICP expression levels. Indeed, as discussed in our previous work (3), differences in virulence could be due to variations in ICP expression level between the cell lines. Indeed, wild-type ICP protein is downregulated in amastigotes (22), whereas the integrated re-expressing mutant  $\Delta icp::P_{rRNA}ICP$  has a constitutive expression throughout the stages. Hence, both cell lines have similar ICP expression levels in promastigotes, but in differentiated

amastigotes the protein is likely to be slightly overexpressed in  $\Delta icp::P_{rRNA}ICP$  compared to the level in the wild type.

**BALB/c mice infected with *L. mexicana* mutants overexpressing ICP develop a modified, Th1/Th2-biased response.** At the termination of the experiment at week 13, no significant differences in *L. mexicana*-specific IgG1 or IgG2a levels were displayed in BALB/c mice inoculated with the  $\Delta icp1$  mutant, the  $\Delta icp3$  mutant, or  $\Delta icp::P_{rRNA}ICP$  compared with the levels displayed in BALB/c mice inoculated with  $5 \times 10^5$  wild-type stationary-phase promastigotes (Fig. 3a). However, infection with  $\Delta icp1$ [pXG ICP] and  $\Delta icp3$ [pXG ICP] resulted in significantly ( $P < 0.05$ ) lower levels of *L. mexicana*-specific IgG1 than did infection with wild-type parasites. Infection with  $\Delta icp1$ [pXG ICP] also resulted in significantly ( $P < 0.05$ ) lower levels of IgG2a than did infection with wild-type parasites (Fig. 3a). Similarly, no significant difference was noted in the total IgE levels for BALB/c mice infected with the  $\Delta icp1$  mutant, the  $\Delta icp3$  mutant, or  $\Delta icp::P_{rRNA}ICP$  compared with the levels for BALB/c mice inoculated with  $5 \times 10^5$  wild-type stationary-phase promastigotes, whereas ICP overexpressing cell lines produced significantly ( $P < 0.05$ ) lower levels of IgE than did wild-type parasites (Fig. 3b). In addition, IgE levels were normalized against levels for noninfected control sera, and absorbances of greater than three times the level for the control sera were deemed indicative of significant IgE production. This revealed that while five of five BALB/c mice infected with wild-type parasites or  $\Delta icp::P_{rRNA}ICP$  and four of five mice infected with the  $\Delta icp1$  or  $\Delta icp3$  mutant had elevated IgE production, only one of five of those mice infected with  $\Delta icp1$ [pXG ICP] or  $\Delta icp3$ [pXG ICP] had raised IgE levels. In vitro stimulation with *L. mexicana* antigenic lysate induced significantly ( $P < 0.05$ ) increased levels of IFN- $\gamma$  from splenocytes isolated from BALB/c mice inoculated with  $\Delta icp1$ [pXG ICP] or  $\Delta icp3$ [pXG ICP] in comparison with levels for the BALB/c mice inoculated with wild-type *L. mexicana* (Fig. 3c). In contrast, anti-CD3-induced IL-4 production was significantly less ( $P < 0.05$ ) from splenocytes isolated from BALB/c mice inoculated with  $\Delta icp1$ [pXG ICP] or  $\Delta icp3$ [pXG ICP] than



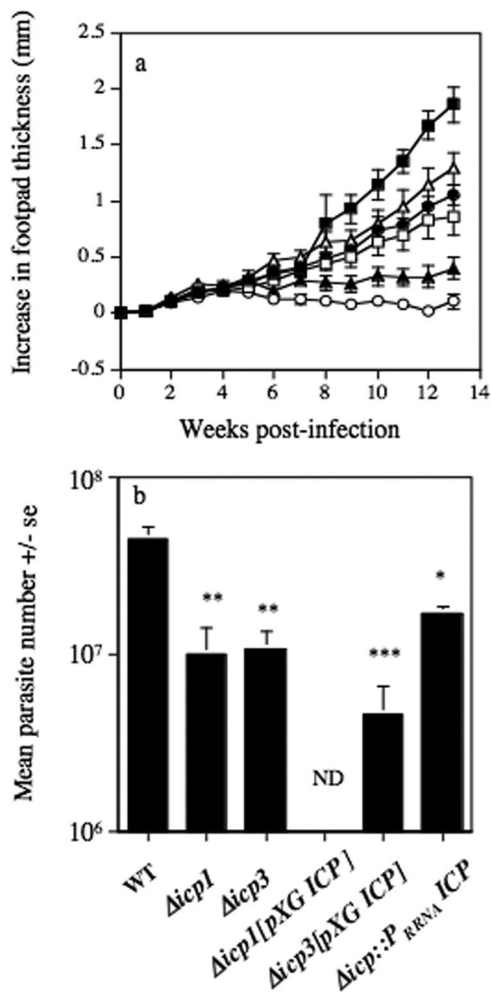


FIG. 2. (a) Mean increases in lesion diameter for BALB/c mice following subcutaneous infection into the hind footpad with  $5 \times 10^5$  wild-type (■),  $\Delta icp1$  (□),  $\Delta icp3$  (●),  $\Delta icp1$ [pXG ICP] (○),  $\Delta icp3$ [pXG ICP] (▲), and  $\Delta icp::P_{rRNA}ICP$  (△) *L. mexicana* stationary-phase promastigotes. (b) Mean numbers of parasites isolated at week 13 postinfection from BALB/c mice infected with  $5 \times 10^5$  wild-type (WT),  $\Delta icp1$ ,  $\Delta icp3$ ,  $\Delta icp1$ [pXG ICP],  $\Delta icp3$ [pXG ICP], and  $\Delta icp::P_{rRNA}ICP$  *L. mexicana* stationary-phase promastigotes (\*  $P < 0.05$ ; \*\*  $P < 0.01$ ; \*\*\*,  $P < 0.005$ ). ND, not detected. Bars represent standard errors (se) of the means. Results are representative of three independent experiments.

from splenocytes isolated from BALB/c mice inoculated with wild-type *L. mexicana* (Fig. 3d). No significant differences in IFN- $\gamma$  and IL-4 production (Fig. 3c and d) were detected in the splenocytes isolated from the BALB/c mice infected with the  $\Delta icp1$  mutant, the  $\Delta icp3$  mutant, or  $\Delta icp::P_{rRNA}ICP$  compared with the levels for BALB/c mice inoculated with wild-type parasites.

**Vaccination with *L. mexicana* mutants overexpressing ICP fails to protect BALB/c mice against challenge with wild-type parasites.** As infection with  $\Delta icp1$ [pXG ICP] stationary-phase promastigotes induced a diminished type 2 and an enhanced type 1 response in BALB/c mice, which were also able to control infection with this mutant, the vaccine potential of  $\Delta icp1$ [pXG ICP] was assessed. Consequently, at 14 weeks after

vaccination with  $\Delta icp1$ [pXG ICP], BALB/c mice were challenged, along with naïve, sex- and age-matched counterparts, with wild-type *L. mexicana* metacyclic promastigotes. However, subcutaneous vaccination of BALB/c mice with  $2 \times 10^5$   $\Delta icp1$ [pXG ICP] parasites 14 weeks prior to challenge inoculation did not induce resistance to infection with wild-type *L. mexicana* metacyclic promastigotes. No significant difference was noted in lesion development for vaccinated BALB/c mice infected with wild-type parasites in the contralateral footpad compared with that for similarly infected nonvaccinated BALB/c mice (Fig. 4a). Similarly, prior vaccination with  $\Delta icp1$ [pXG ICP] *L. mexicana* promastigotes did not alter the parasite burdens for the BALB/c mice at the termination of the experiment compared with those for infected, nonvaccinated BALB/c mice (Fig. 4b). There were also no differences in the immune responses between vaccinated and nonvaccinated BALB/c mice at the termination of the challenge infection (data not shown). Vaccination of BALB/c mice with  $\Delta icp3$ [pXG ICP] stationary-phase promastigotes also failed to induce protection against wild-type challenge (data not shown).

**Vaccination with *L. mexicana* mutants overexpressing ICP protects C3H and C57BL/6 mice against challenge with wild-type parasites.** Previously, we have shown that other *L. mexicana*-susceptible mouse strains are more responsive to vaccination with CP mutants than BALB/c mice (2, 5). In addition, other mouse strains, such as C3H and C57BL/6, were able to control lesion growth with mutants that continued to cause nonhealing disease, albeit limited, in BALB/c mice (2, 6). Consequently, infection of these mouse strains with  $\Delta icp3$ [pXG ICP] and, to a lesser extent,  $\Delta icp1$ [pXG ICP] resulted in control of lesion growth. In a typical experiment, in contrast to the nonhealing response of C3H mice infected with wild-type parasites, mice infected with  $\Delta icp3$ [pXG ICP] developed small lesions that peaked at 4 to 6 weeks and consequently proceeded to heal (Fig. 5a). Parasite burdens were similar for wild-type- and  $\Delta icp3$ [pXG ICP]-infected mice up to 1 week postinfection (Fig. 5b). However, by week 2 postinfection parasite burdens were approaching 3 orders of magnitude greater than those for mice infected with  $\Delta icp3$ [pXG ICP] ( $P < 0.01$ ). However, treatment of  $\Delta icp3$ [pXG ICP]-infected mice with neutralizing IFN- $\gamma$  resulted in a significant increase in mutant parasite growth, also approaching 3 orders of magnitude greater (Fig. 5b). This not only confirmed the ability of  $\Delta icp3$ [pXG ICP] to multiply within the host but also confirmed that growth was limited due to the generation of IFN- $\gamma$ . Neutralizing IFN- $\gamma$  also increased  $\Delta icp3$ [pXG ICP] growth in BALB/c mice, indicating that the role of IFN- $\gamma$  in protection was independent of the mouse strain used (data not shown). Consequently, we studied the ability of ICP overexpressing mutants to protect C3H and C57BL/6 mice against challenge with wild-type parasites. Lesions were smaller in both  $\Delta icp1$ [pXG ICP]- and  $\Delta icp3$ [pXG ICP]-vaccinated C3H and C57BL/6 mice at the termination of the experiment, at week 10, than in nonvaccinated mice following challenge with  $5 \times 10^5$  wild-type stationary-phase promastigotes (Fig. 6a and b). However, only in C57BL/6 mice vaccinated with  $\Delta icp3$ [pXG ICP] was this difference significant ( $P < 0.05$ ). No increase in lesion growth was detected from 5 weeks after challenge infection in vaccinated C3H mice, whereas continuous significant lesion growth was noted for the nonvaccinated challenged

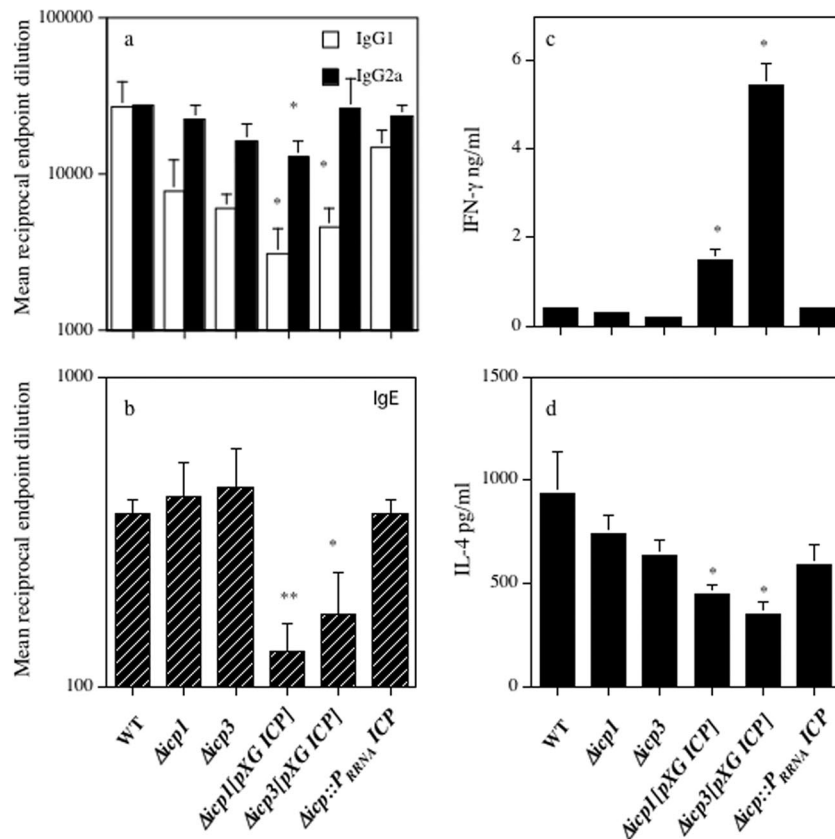


FIG. 3. *L. mexicana*-specific IgG1 and IgG2a levels (a) and total IgE levels (b) in BALB/c mice in response to infection with  $5 \times 10^5$  wild-type (WT),  $\Delta icp1$ ,  $\Delta icp3$ ,  $\Delta icp1$ [pXG ICP],  $\Delta icp3$ [pXG ICP], and  $\Delta icp3::P_{RNA}ICP$  stationary-phase promastigotes into the hind footpad (\*,  $P < 0.05$ ; \*\*,  $P < 0.01$ ). In vitro production of IFN- $\gamma$  (c) and IL-4 (d) by splenocytes, in the presence of 10  $\mu$ g/ml *L. mexicana* antigen and 0.5  $\mu$ g/ml anti-CD3, respectively, from BALB/c mice infected with  $5 \times 10^5$  wild-type,  $\Delta icp1$ ,  $\Delta icp3$ ,  $\Delta icp1$ [pXG ICP],  $\Delta icp3$ [pXG ICP], and  $\Delta icp3::P_{RNA}ICP$  *L. mexicana* stationary-phase promastigotes at week 13 postinfection (\*,  $P < 0.05$ ). Bars represent standard errors of the means. Results are representative of three independent experiments.

group. Control of the challenge infection due to prior vaccination of C3H mice with  $\Delta icp1$ [pXG ICP] or  $\Delta icp3$ [pXG ICP] and C57BL/6 mice with  $\Delta icp3$ [pXG ICP], though not  $\Delta icp1$ [pXG ICP], stationary-phase promastigotes was also demonstrated by the significantly ( $P < 0.05$ ) reduced parasite burdens compared with those for nonvaccinated mice infected with  $5 \times 10^5$  wild-type promastigotes (Fig. 6c and d). Subcutaneous vaccination of C3H and C57BL/6 mice with  $2 \times 10^5$   $\Delta icp3$ [pXG ICP] or  $\Delta icp1$ [pXG ICP] parasites 14 weeks prior to inoculation with wild-type parasites resulted, at the termination of this experiment, in a significantly ( $P < 0.05$ ) higher increase in antigen-induced IFN- $\gamma$  production from splenocytes than in antigen-induced IFN- $\gamma$  production from splenocytes of naive C3H or C57BL/6 mice infected with  $5 \times 10^5$  wild-type *L. mexicana* stationary-phase promastigotes (Fig. 6e and f).

**DISCUSSION**

Previous studies of the characterization and function of *L. mexicana* ICP have suggested that it may play a role in protecting the parasite from the degradative activity of not only parasite CPB and CPA in particular but also host CPs which are found colocalized with ICP in the parasite endocytic ves-

cles (3). Consequently, ICP-deficient *L. mexicana* mutants lose some virulence for BALB/c mice, as measured by slightly reduced lesion growth, which was somewhat restored by reexpressing normal levels of ICP in the mutants (3). In spite of the reduced virulence of the  $\Delta icp$  mutant, there are no discernible immunological consequences for the host or parasite, as demonstrated in the present study by antibody levels as well as IFN- $\gamma$  and IL-4 production. In contrast, we demonstrate not only that parasites overexpressing ICP have greatly reduced virulence for mice but also that this is associated with a switch from a Th2- to a Th1-biased response. Consequently, when ICP is overexpressed by mutant parasites, it influences the infectivity of the parasite in ways other than those merely associated with efficient housekeeping and fitness activities.

Our previous studies utilizing mutants of *L. mexicana* deficient in the CPs have revealed the importance of both clan CA, family C1 peptidases CPB and CPA for virulence.  $\Delta cpb$  mutant amastigotes, although equally as infective for macrophages in vitro as wild-type parasites (10), have a reduced ability to induce lesion growth in BALB/c mice (2, 8).  $\Delta cpa \Delta cpb$  mutants were less infective for BALB/c mice than  $\Delta cpb$  mutants (2, 18), which also implicates CPA as a virulence factor. As ICP has been shown to preferentially inhibit clan CA, family C1,

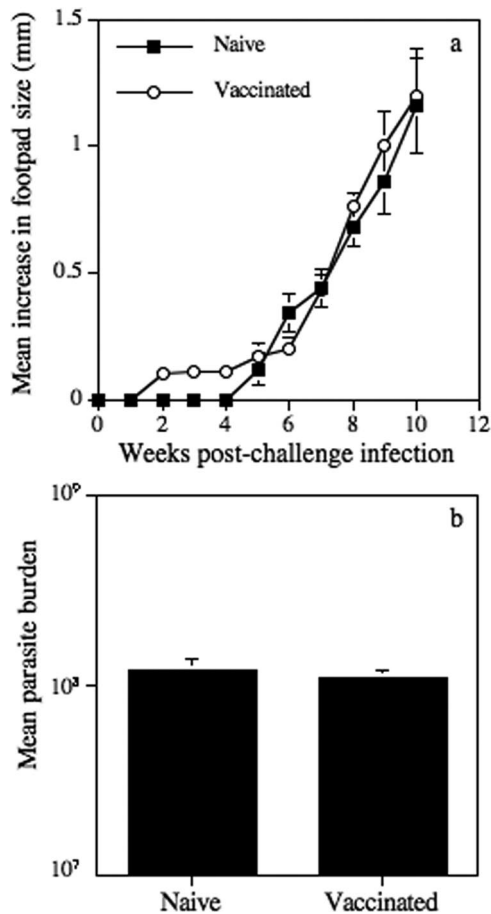


FIG. 4. Mean increases in hind-footpad diameter (a) and parasite burdens (b) following subcutaneous infection with  $5 \times 10^5$  *L. mexicana* stationary-phase promastigotes into naive BALB/c mice and BALB/c mice vaccinated with  $\Delta icp1$ [pXG ICP]. Bars represent standard errors, and results are representative of three independent experiments.

cathepsin L-like peptidases, such as CPB (22), and to bind specifically to CPA and CPB (3), this could be the likely mechanism by which ICP overexpressing mutants lose virulence. Although expressed primarily in wild-type promastigotes rather

than amastigotes (22), ICP is released in significant quantities by the amastigotes of overexpressing clones  $\Delta icp1$ [pXG ICP] and  $\Delta icp3$ [pXG ICP] (3). The virulence of *L. mexicana* for BALB/c mice has been associated with the ability of CPB/CPA to induce a Th2 response in BALB/c mice. In infected mice,  $\Delta cpb$  and  $\Delta cpa$   $\Delta cpb$  mutants induce a Th1 response characterized by increased IFN- $\gamma$  production, and consequently, lesion growth is inhibited (2, 5). Similar immunological and disease phenotypes were found in mice infected by ICP overexpressing mutants in the present study, suggesting that ICP acts to inhibit CPB/CPA immunomodulatory activity.

Small chemical inhibitors of clan CA CPs have previously been shown to inhibit the growth of several species of *Leishmania*, including *L. donovani* (7), *L. chagasi* (11, 15, 26), *L. tropica* (15), and *L. major* (14, 21), and a number of mechanisms have been implicated. However, ICPs may not necessarily operate by targeting parasite CPs directly but may act by inhibiting the crucial role of host CPs in the processing of antigen via major histocompatibility complex (MHC) class II. For example, studies have shown that chemically inhibiting cathepsins B, which are involved in antigen processing, switches *L. major*-infected BALB/c mice from producing a nonhealing Th2 to a healing Th1 response (14), while inhibiting cathepsins L promotes a Th2 response and increased susceptibility to the parasite (19, 29). However, ICP preferentially binds and inhibits mammalian cathepsin L and has 1/1,000 less affinity for cathepsin B (22). Consequently, this specificity probably negates a role for ICP from overexpressing mutants in directly modulating host cell antigen-presenting pathways. However, *L. mexicana* and *L. amazonensis* CPs have been implicated in the inhibition of antigen presentation by degrading MHC class II molecules in the parasitophorous vacuole (9). ICP in overexpressing mutants in this study could therefore function to promote MHC class II antigen presentation indirectly by inhibiting the degradative activity of parasite CPs. Inhibitors of cathepsin L-like CPs have also been associated with modulating host cell production of nitric oxide upon infection with *L. donovani* (7) or *L. major* (21), production of tumor necrosis factor alpha upon infection with *L. major* (21), and production of IL-12 upon infection with *L. major* (21) or

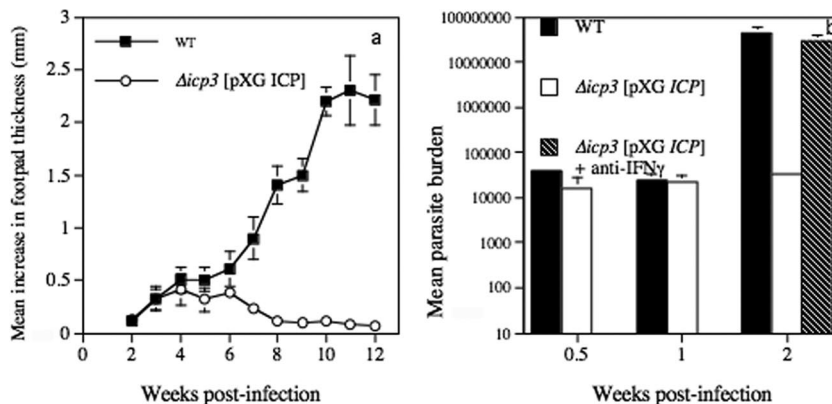


FIG. 5. (a) Mean increases in hind-footpad thickness for C3H mice infected with wild-type (WT) and  $\Delta icp3$ [pXG ICP] promastigotes. (b) The parasites in the footpad were quantified by limiting dilution for up to 2 weeks postinfection, and the effects of intraperitoneal anti-IFN- $\gamma$  treatment (150  $\mu$ g rat hybridoma R4-6A2 on day 0, day 4, and day 8) on the growth of  $\Delta icp3$ [pXG ICP] were assessed. Bars represent standard errors of the means. Results are representative of two independent experiments.

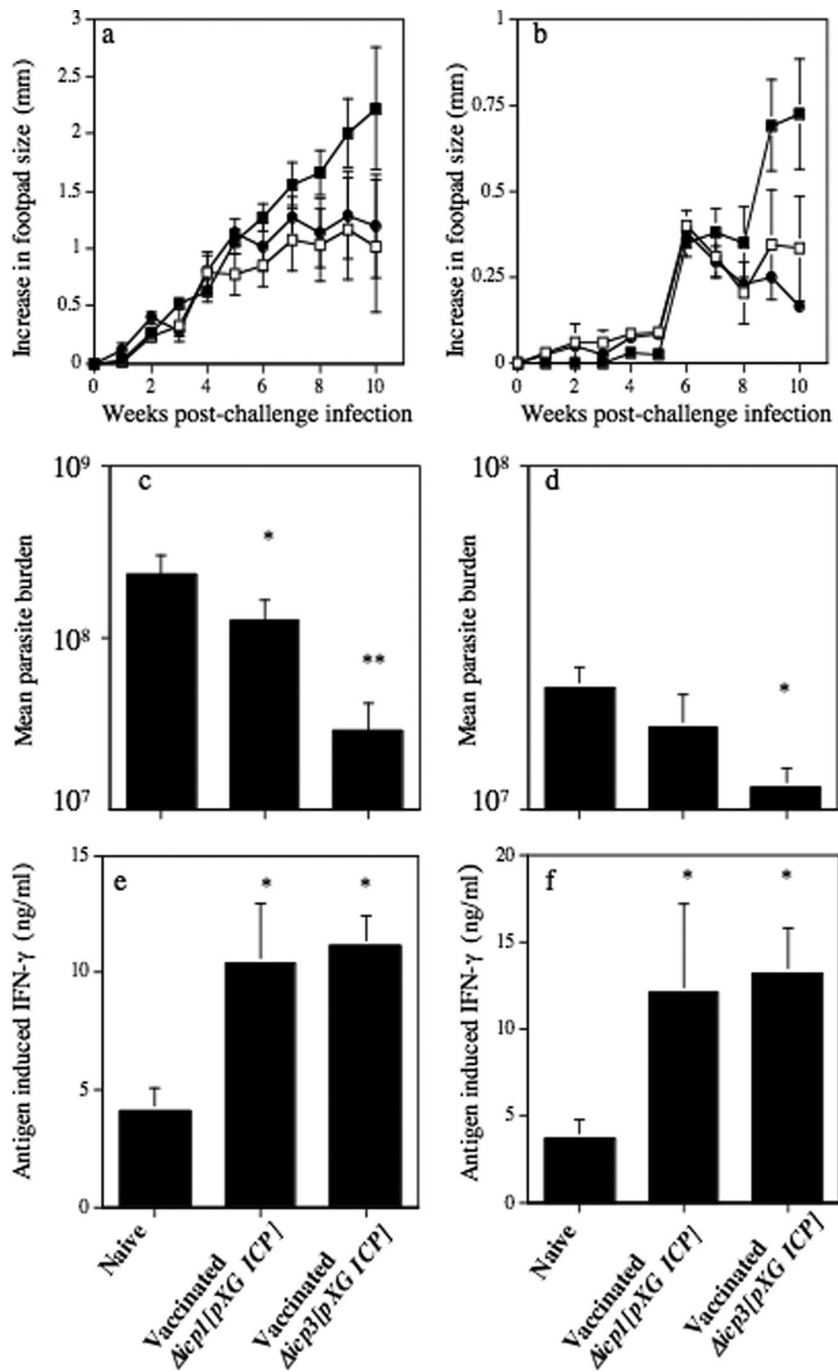


FIG. 6. Mean increases in hind-footpad diameter (a and b) and parasite burdens (c and d) following subcutaneous infection with  $5 \times 10^5$  wild-type *L. mexicana* stationary-phase promastigotes into naïve (■) C3H mice (a and c) and C57BL/6 mice (b and d) and mice vaccinated with  $2 \times 10^5$  stationary-phase  $\Delta icp1$ [pXG ICP] (□) or  $\Delta icp3$ [pXG ICP] (●) promastigotes (a, b, c, and d). Mean levels of IFN- $\gamma$  production from antigen-stimulated splenocytes isolated from wild-type-*L. mexicana*-infected naïve C3H (e) and C57BL/6 (f) mice and mice vaccinated with  $\Delta icp1$ [pXG ICP] or  $\Delta icp3$ [pXG ICP] stationary-phase promastigotes. \*,  $P < 0.05$ ; \*\*,  $P < 0.01$ . Bars represent standard errors of the means. Results are representative of two independent experiments.

*L. mexicana* (6). All of these products are associated with, or would promote, a Th1 response and protection. There is strong evidence that *L. mexicana* effects on host cell IL-12 production are, in part, a consequence of CPB degrading host cell NF- $\kappa$ B signaling pathways and that this degradation does not occur upon infection with  $\Delta cpb$  mutant parasites or in the presence

of cell-permeable CP inhibitors (6). Overexpressed ICP could inhibit this previously characterized CPB activity, and in addition, it could be released into the extracellular milieu (3), as previously demonstrated for CPB (12). Hence, ICP could inhibit the ability of the CP to generate IL-4 and a Th2 response (20).



As infection of BALB/c mice with *L. mexicana* metacyclic promastigotes of overexpressing clones  $\Delta icp1$ [pXG ICP] and  $\Delta icp3$ [pXG ICP] induced immune responses that favor resistance to infection, these genetically modified parasites were considered as vaccine candidates.  $\Delta icp1$ [pXG ICP] was considered the most suitable candidate for the development of a vaccine, as this mutant induced no detectable lesion progression or parasite replication. However, subcutaneous vaccination with  $\Delta icp1$ [pXG ICP] did not confer protection to subsequent challenge with wild-type *L. mexicana* promastigotes. No significant differences in lesion development or parasite burdens or subsequent immune responses were detected (data not shown) following infection of vaccinated mice with wild-type parasites or infection of naïve mice. Significantly, we have demonstrated previously that only limited resistance was conferred on BALB/c mice vaccinated with  $\Delta cpa \Delta cpb$  mutant parasites and that this required extremely large experimental groups of 20 mice to demonstrate (2). However, while the nonhealing responses of BALB/c mice for *L. mexicana* have been related to CP-induced IL-4 (8, 20), by contrast, the virulence of *L. mexicana* for the *L. major*-resistant C3H and C57BL/6 strains has been associated with the ability of CPB to inhibit Th1 responses rather than to induce Th2 responses (5). In mice infected with the *L. mexicana*  $\Delta cpb$  mutant, lesion resolution was associated with elevated Th1 responses, and healing was demonstrated to be Th1 dependent. Prior vaccination of these mice as well as CBA mice (2, 5) with  $\Delta cpb$  mutant parasites afforded significant protection against challenge with wild-type parasites. Similarly, vaccination of C57BL/6 and C3H mice with  $\Delta icp3$ [pXG ICP] and vaccination of C3H mice with  $\Delta icp1$ [pXG ICP] or  $\Delta icp3$ [pXG ICP] did offer some protection against wild-type challenge, as demonstrated by elevated antigen-induced spleen cell IFN- $\gamma$  production, delayed lesion growth, and reduced parasite numbers.

Overall, this study not only confirms the role of *L. mexicana* cathepsin L-like CPs as virulence factors but also provides further evidence of the therapeutic potential of specific CP inhibitors.

#### ACKNOWLEDGMENT

This work was supported by the Wellcome Trust.

#### REFERENCES

- Alexander, J., F. Brombacher, H. A. McGachy, A. N. McKenzie, W. Walker, and K. C. Carter. 2002. An essential role for IL-13 in maintaining a non-healing response following *Leishmania mexicana* infection. *Eur. J. Immunol.* **32**:2923–2933.
- Alexander, J., G. H. Coombs, and J. C. Mottram. 1998. *Leishmania mexicana* cysteine proteinase-deficient mutants have attenuated virulence for mice and potentiate a Th1 response. *J. Immunol.* **161**:6794–6801.
- Besteiro, S., G. H. Coombs, and J. C. Mottram. 2004. A potential role for ICP, a leishmanial inhibitor of cysteine peptidases, in the interaction between host and parasite. *Mol. Microbiol.* **54**:1224–1236.
- Blackwell, J. M., B. Roberts, and J. Alexander. 1985. Response of BALB/c mice to leishmanial infection. *Curr. Top. Microbiol. Immunol.* **122**:97–106.
- Buxbaum, L. U., H. Denise, G. H. Coombs, J. Alexander, J. C. Mottram, and P. Scott. 2003. Cysteine protease B of *Leishmania mexicana* inhibits host Th1 responses and protective immunity. *J. Immunol.* **171**:3711–3717.
- Cameron, P., A. McGachy, M. Anderson, A. Paul, G. H. Coombs, J. C. Mottram, J. Alexander, and R. Plevin. 2004. Inhibition of lipopolysaccharide-induced macrophage IL-12 production by *Leishmania mexicana* amastigotes: the role of cysteine peptidases and the NF-kappaB signaling pathway. *J. Immunol.* **173**:3297–3304.
- Das, L., N. Datta, S. Bandyopadhyay, and P. K. Das. 2001. Successful therapy of lethal murine visceral leishmaniasis with cystatin involves up-regulation of nitric oxide and a favorable T cell response. *J. Immunol.* **166**:4020–4028.
- Denise, H., K. McNeil, D. R. Brooks, J. Alexander, G. H. Coombs, and J. C. Mottram. 2003. Expression of multiple CPB genes encoding cysteine proteases is required for *Leishmania mexicana* virulence in vivo. *Infect. Immun.* **71**:3190–3195.
- De Souza Leao, S., T. Lang, E. Prina, R. Heliö, and J. C. Antoine. 1995. Intracellular *Leishmania amazonensis* amastigotes internalize and degrade MHC class II molecules of their host cells. *J. Cell Sci.* **108**:3219–3231.
- Frame, M. J., J. C. Mottram, and G. H. Coombs. 2000. Analysis of the roles of cysteine proteinases of *Leishmania mexicana* in the host-parasite interaction. *Parasitology* **121**:367–377.
- Gantt, K. R., S. Schultz-Cherry, N. Rodriguez, S. M. Jeronimo, E. T. Nascimento, T. L. Goldman, T. J. Recker, M. A. Miller, and M. E. Wilson. 2003. Activation of TGF-beta by *Leishmania chagasi*: importance for parasite survival in macrophages. *J. Immunol.* **170**:2613–2620.
- Ilg, T., M. Fuchs, V. Gnau, M. Wolfram, D. Harbecke, and P. Overath. 1994. Distribution of parasite cysteine proteinases in lesions of mice infected with *Leishmania mexicana* amastigotes. *Mol. Biochem. Parasitol.* **67**:193–203.
- Julia, V., M. Rassoulzadegan, and N. Glaichenhaus. 1996. Resistance to *Leishmania major* induced by tolerance to a single antigen. *Science* **274**:421–423.
- Maekawa, Y., K. Himeno, H. Ishikawa, H. Hisaeda, T. Sakai, T. Dainichi, T. Asao, R. A. Good, and N. Katunuma. 1998. Switch of CD4+ T cell differentiation from Th2 to Th1 by treatment with cathepsin B inhibitor in experimental leishmaniasis. *J. Immunol.* **161**:2120–2127.
- Mahmoudzadeh-Niknam, H., and J. H. McKerrow. 2004. *Leishmania tropica*: cysteine proteases are essential for growth and pathogenicity. *Exp. Parasitol.* **106**:158–163.
- McMahon-Pratt, D., and J. Alexander. 2004. Does the *Leishmania major* paradigm of pathogenesis and protection hold for New World cutaneous leishmaniasis or the visceral disease? *Immunol. Rev.* **201**:206–224.
- Mottram, J. C., G. H. Coombs, and J. Alexander. 2004. Cysteine peptidases as virulence factors of *Leishmania*. *Curr. Opin. Microbiol.* **7**:375–381.
- Mottram, J. C., A. E. Souza, J. E. Hutchison, R. Carter, M. J. Frame, and G. H. Coombs. 1996. Evidence from disruption of the *lmcpb* gene array of *Leishmania mexicana* that cysteine proteinases are virulence factors. *Proc. Natl. Acad. Sci. USA* **93**:6008–6013.
- Onishi, K., Y. Li, K. Ishii, H. Hisaeda, L. Tang, X. Duan, T. Dainichi, Y. Maekawa, N. Katunuma, and K. Himeno. 2004. Cathepsin L is crucial for a Th1-type immune response during *Leishmania major* infection. *Microbes Infect.* **6**:468–474.
- Pollock, K. G., K. S. McNeil, J. C. Mottram, R. E. Lyons, J. M. Brewer, P. Scott, G. H. Coombs, and J. Alexander. 2003. The *Leishmania mexicana* cysteine protease, CPB2.8, induces potent Th2 responses. *J. Immunol.* **170**:1746–1753.
- Ponte-Sucre, A., R. Vicki, M. Schultheis, T. Schirmeister, and H. Moll. 2006. Aziridine-2,3-dicarboxylates, peptidomimetic cysteine protease inhibitors with antileishmanial activity. *Antimicrob. Agents Chemother.* **50**:2439–2447.
- Sanderson, S. J., G. D. Westrop, J. Scharfstein, J. C. Mottram, and G. H. Coombs. 2003. Functional conservation of a natural cysteine peptidase inhibitor in protozoan and bacterial pathogens. *FEBS Lett.* **542**:12–16.
- Satoskar, A., H. Bluethmann, and J. Alexander. 1995. Disruption of the murine interleukin-4 gene inhibits disease progression during *Leishmania mexicana* infection but does not increase control of *Leishmania donovani* infection. *Infect. Immun.* **63**:4894–4899.
- Selzer, P. M., S. Pingel, I. Hsieh, B. Ugele, V. J. Chan, J. C. Engel, M. Bogoy, D. G. Russell, J. A. Sakanari, and J. H. McKerrow. 1999. Cysteine protease inhibitors as chemotherapy: lessons from a parasite target. *Proc. Natl. Acad. Sci. USA* **96**:11015–11022.
- Smith, B. O., N. C. Picken, G. D. Westrop, K. Bromek, J. C. Mottram, and G. H. Coombs. 2006. The structure of *Leishmania mexicana* ICP provides evidence for convergent evolution of cysteine peptidase inhibitors. *J. Biol. Chem.* **281**:5821–5828.
- Somanna, A., V. Mundodi, and L. Gedamu. 2002. Functional analysis of cathepsin B-like cysteine proteases from *Leishmania donovani* complex. Evidence for the activation of latent transforming growth factor beta. *J. Biol. Chem.* **277**:25305–25312.
- Torrentera, F. A., N. Glaichenhaus, J. D. Laman, and Y. Carlier. 2001. T-cell responses to immunodominant LACK antigen do not play a critical role in determining susceptibility of BALB/c mice to *Leishmania mexicana*. *Infect. Immun.* **69**:617–621.
- Williams, R. A., L. Tetley, J. C. Mottram, and G. H. Coombs. 2006. Cysteine peptidases CPA and CPB are vital for autophagy and differentiation in *Leishmania mexicana*. *Mol. Microbiol.* **61**:655–674.
- Zhang, T., Y. Maekawa, T. Sakai, Y. Nakano, K. Ishii, H. Hisaeda, T. Dainichi, T. Asao, N. Katunuma, and K. Himeno. 2001. Treatment with cathepsin L inhibitor potentiates Th2-type immune response in *Leishmania major*-infected BALB/c mice. *Int. Immunol.* **13**:975–982.