

# Induction of RNA-directed DNA methylation upon decondensation of constitutive heterochromatin

Vera K. Schoft<sup>1</sup>, Nina Chumak<sup>1</sup>, Magdalena Mosiolek<sup>1</sup>, Lucyna Slusarz<sup>1</sup>, Vukoslav Komnenovic<sup>2</sup>, Lynette Brownfield<sup>3</sup>, David Twell<sup>3</sup>, Tetsuji Kakutani<sup>4</sup> & Hisashi Tamaru<sup>1+</sup>

<sup>1</sup>Gregor Mendel Institute of Molecular Plant Biology, and <sup>2</sup>Institute of Molecular Biotechnology, Histology Department, Austrian Academy of Sciences, Vienna, Austria, <sup>3</sup>Department of Biology, University of Leicester, Leicester, UK, and <sup>4</sup>Department of Integrated Genetics, National Institute of Genetics, Mishima, Shizuoka, Japan

Centromeric constitutive heterochromatin is marked by DNA methylation and dimethylated histone H3 Lys9 (H3K9me2) in *Arabidopsis*. RNA-directed DNA methylation (RdDM) is a process that uses 24-nucleotide (nt) small interfering RNAs (siRNAs) to induce *de novo* methylation to its homologous DNA sequences. Despite the presence of centromeric 24-nt siRNAs, mutations in genes required for RdDM do not appreciably influence the methylation of centromeric repeats. The mechanism by which constitutive heterochromatin is protected from RdDM remains puzzling. Here, we report that the vegetative cell nuclei (VN) of the male gametophyte (pollen) invariably undergo extensive decondensation of centromeric heterochromatin and lose centromere identity. VN show greatly reduced H3K9me2, phenocopying nuclei carrying a mutation in the chromatin remodeller *DECREASE IN DNA METHYLATION 1 (DDM1)*. However, unlike the situation in *ddm1* nuclei, the decondensed heterochromatin retains dense CG methylation and transcriptional silencing, and, unexpectedly, is subjected to RdDM-dependent hypermethylation in non-CG contexts. These findings reveal two assembly orders of silent heterochromatin and implicate the condensed form in blocking the RdDM machinery.

Keywords: RdDM; constitutive heterochromatin; CenH3; H3 Lys9 methylation; pollen

EMBO reports (2009) 10, 1015–1021. doi:10.1038/embor.2009.152

## INTRODUCTION

Constitutively heterochromatic centromeric regions in plants and animals are rich in highly repeated tandem arrays of satellite DNA and moderately repeated sequences, such as transposons, and show a low level of transcription. Constitutive heterochromatin remains condensed after mitosis, contains special forms of histones and is associated with repressive chromatin marks, including DNA cytosine methylation (Richards & Elgin, 2002) and histone H3 Lys9 methylation (Jenuwein & Allis, 2001). Centromeric heterochromatin is required for establishing centromeres and for correct chromosome segregation in fission yeast (Folco *et al*, 2008).

In *Arabidopsis*, 5-methylcytosine is detected in the sequence contexts CG, CHG and CHH (in which H is A, T or C). METHYLTRANSFERASE 1 (MET1), a homologue of the mammalian DNMT1, is responsible for the maintenance of CG methylation (Kankel *et al*, 2003). Most of the CHG and a small fraction of CHH methylation are achieved by CHROMO-METHYLASE 3 (CMT3; Bartee *et al*, 2001). *DOMAINS REARRANGED METHYLTRANSFERASE 2 (DRM2)* encodes a protein homologous to the mammalian *de novo* DNMT3 and is required for RNA-directed DNA methylation (RdDM) in all sequence contexts (Cao & Jacobsen, 2002). Two functionally diversified plant-specific RNA polymerases, Pol IV and V, have specific functions in RdDM (Herr *et al*, 2005; Onodera *et al*, 2005; Kanno *et al*, 2005b). Pol IV is involved in producing or amplifying small interfering RNAs (siRNAs), whereas Pol V, together with DRM2, functions downstream of siRNA production (Matzke & Birchler, 2005). The RdDM machinery uses 24-nt siRNAs to guide methylation of homologous DNA sequences (Xie *et al*, 2004).

Unlike the situation in animals, in which gametes represent the direct products of meiosis, higher plants form multicellular haploid male and female gametophytes by additional post-meiotic mitotic divisions. The male gametophyte (pollen) has two sperm cells and one vegetative cell. The first male post-meiotic division is asymmetric, and leads to the formation of the generative (germ) and the terminally differentiated vegetative

<sup>1</sup>Gregor Mendel Institute of Molecular Plant Biology, and <sup>2</sup>Institute of Molecular Biotechnology, Histology Department, Austrian Academy of Sciences, Dr Bohr-Gasse 3, 1030 Vienna, Austria

<sup>3</sup>Department of Biology, University of Leicester, University Road, Leicester LE1 7RH, UK

<sup>4</sup>Department of Integrated Genetics, National Institute of Genetics, Yata 1111, Mishima, Shizuoka 411-8540, Japan

+Corresponding author. Tel: +43 1 79044 9822; Fax: +43 1 79044 239822; E-mail: hisashi.tamaru@gmi.oeaw.ac.at

(somatic) cell lines. The two daughter cells have two distinct fates: the generative cell undergoes mitosis once again, giving rise to two sperm cells, whereas the vegetative cell supports pollen-tube elongation for delivering the sperm cells to the female gametophyte and degenerates before fertilization (McCormick, 2004). Previous studies have revealed unique epigenetic processes in the female gametophyte, but the features of the epigenome in pollen are relatively poorly understood. Here, we aimed to investigate the epigenetic states of centromeric heterochromatin in sperm cell nuclei (SN) and vegetative cell nuclei (VN) of *Arabidopsis* pollen.

## RESULTS

### Decondensation of 180CEN repeats in VN

The first indication of differential chromatin states in the two types of nucleus is that VN show more diffuse and fainter staining with 4',6-diamidino-2-phenylindole than SN (Fig 1A). To address whether invisible chromocentres in VN reflect the dispersal of centromeric heterochromatin, we analysed 180-bp centromeric (180CEN) repeats in pollen nuclei by using fluorescence *in situ* hybridization (FISH; Fig 1B). The 180CEN repeat probe decorated condensed centromeric foci in SN, whereas dispersed FISH signals were detected in VN, indicating that centromeric heterochromatin is decondensed in VN.

Similar large-scale heterochromatin decondensation occurs during dedifferentiation of leaf mesophyll cells into protoplasts or floral transition (Tessadori *et al*, 2007a, b). These findings indicate that constitutive heterochromatin undergoes decondensation in other cell types in *Arabidopsis*.

### Disruption of CenH3 chromatin in VN

Next, we characterized HTR12 (Talbert *et al*, 2002), the centromere-specific histone H3 variant (CenH3), by immunolocalization using the antibody against HTR12, together with the antibody against canonical histone H3 that we used as a positive control. Both SN and VN produced robust signals with the antibody against bulk H3 (Fig 1C). By contrast, faint scattered CenH3 signals were barely detectable in VN under conditions that produced strong signals of centromeric foci in SN (Fig 1D). Given that CenH3 is a conserved epigenetic mark for centromeres and is required for mitotic progression, the loss of CenH3 indicates that centromeres are disrupted in VN. These findings are in contrast to those for normal interphase nuclei, in which chromosomes maintain centromeres as detected by condensed foci containing 180CEN repeats and CenH3.

### Loss of H3K9me2 in VN

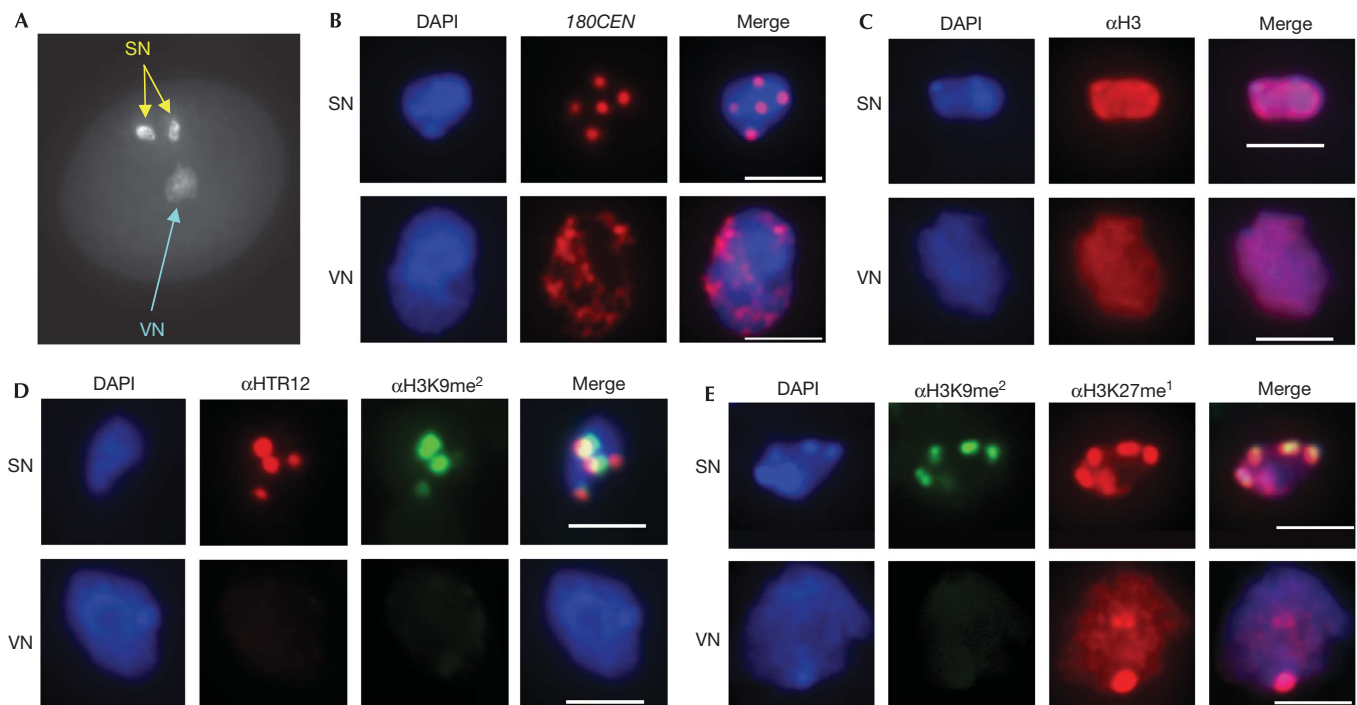
Notably, *DECREASE IN DNA METHYLATION 1* (*DDM1*) is the only gene identified so far in which mutations cause marked decondensation of 180CEN repeats in a sub-population of nuclei from sporophytic tissues (Probst *et al*, 2003), similar to that observed in the wild-type VN. The fact that *ddm1* causes a decrease in heterochromatic H3K9me2 (Soppe *et al*, 2002), together with the recent finding of the absence of detectable DDM1 in VN (Slotkin *et al*, 2009), motivated us to investigate whether the decondensed heterochromatin in VN also coincides with the loss of H3K9me2 using immunostaining with the antibody against H3K9me2. We found that the H3K9me2 signals are greatly reduced or are undetectable in VN under conditions

that gave intense signals in SN, which overlap substantially with CenH3 foci (Fig 1D). Next, we analysed H3K27me1, which is also enriched at heterochromatic chromocentres but also labels euchromatin to a lesser extent. It is of note that unlike H3K9me2, *ddm1* does not reduce H3K27me1 in sporophytic nuclei (Mathieu *et al*, 2005). The antibody against H3K27me1 detected robust, dispersed signals and a prominent focal signal, which presumably represents nucleolus organizer regions (N. Chumak & H.T., unpublished data), in VN as intensively as in SN, in which the H3K27me1 signals co-localize with the H3K9me2 signals (Fig 1E). These results suggest that H3K9me2, but not H3K27me1, is lost in VN.

### Non-CG hypermethylation at centromeric DNA in VN

Our finding of the loss of H3K9me2 in VN, which phenocopies *ddm1*, led us to investigate DNA methylation, which is also decreased in *ddm1* nuclei. To analyse DNA sequences from SN and VN separately, we developed a method for fractionating each type of nucleus using fluorescence-activated cell sorting based on differences in their DNA content and granularity (supplementary Fig S1 online). We used bisulphite sequencing to analyse cytosine methylation in the sorted wild-type SN and VN at a single unique allele of the 180CEN repeat (Saze *et al*, 2003) and of the *Athila* transposon (Lindroth *et al*, 2001), which are located close to the centromeres of chromosomes I and IV, respectively (Fig 2A). Contrary to the expectation from the absence of DDM1 in VN, nearly complete levels (90–100% 5-methylcytosine (<sup>m</sup>C)) of CG methylation and intermediate levels (20–100% <sup>m</sup>C) of CHG methylation were detected in the 180CEN and *Athila* sequences from both SN and VN. More surprisingly, compared with the relatively low levels (0–30% <sup>m</sup>C) of CHH methylation in SN, we found a marked increase in CHH methylation, and a noticeable increase in CHG methylation in VN. Specifically, all CHH sites in both the 180CEN (39 sites) and *Athila* (30 sites) sequences from VN showed a markedly higher percentage of <sup>m</sup>C than those from SN. In addition, all six CHG sites in the 180CEN, and 14 out of 18 CHG sites in the *Athila* sequences from VN showed a higher percentage of <sup>m</sup>C than those from SN. Parallel bisulphite-sequencing analysis with wild-type seedlings also showed a relatively lower percentage of <sup>m</sup>C at most of the CHH sites, compared with that in VN, suggesting that the infrequent CHH methylation at the 180CEN and *Athila* regions is a default state in *Arabidopsis*. A similar decondensation of 180CEN repeats and non-CG hypermethylation were observed in VN of another wild-type *Arabidopsis thaliana* ecotype, Wassilevskija (supplementary Fig S2A,B online). This shows that the phenomena are not limited to the Col-0 background.

Next we analysed cytosine methylation at bulk 180CEN repeats from sorted SN and VN by Southern hybridization probed with 180CEN DNA (Fig 3). Two pairs of isoschizomers, *HpaII/MspI* and *CviAII/NlaIII*, were used to analyse CG/CHG and CHH methylation, respectively. DNA from both SN and VN showed evidence of heavy CG and CHG methylation at *HpaII/MspI* sites. A shift of the hybridization signals to bands of higher molecular weight in the *MspI*-digested VN DNA, compared with SN DNA, indicates CHG hypermethylation in VN. These findings show that heterochromatin can undergo decondensation (Fig 1B) with a concomitant loss of H3K9me2 (Fig 1D, E), leaving dense CG and CHG methylation. By contrast, digestions using *CviAII* and *NlaIII* showed negligible



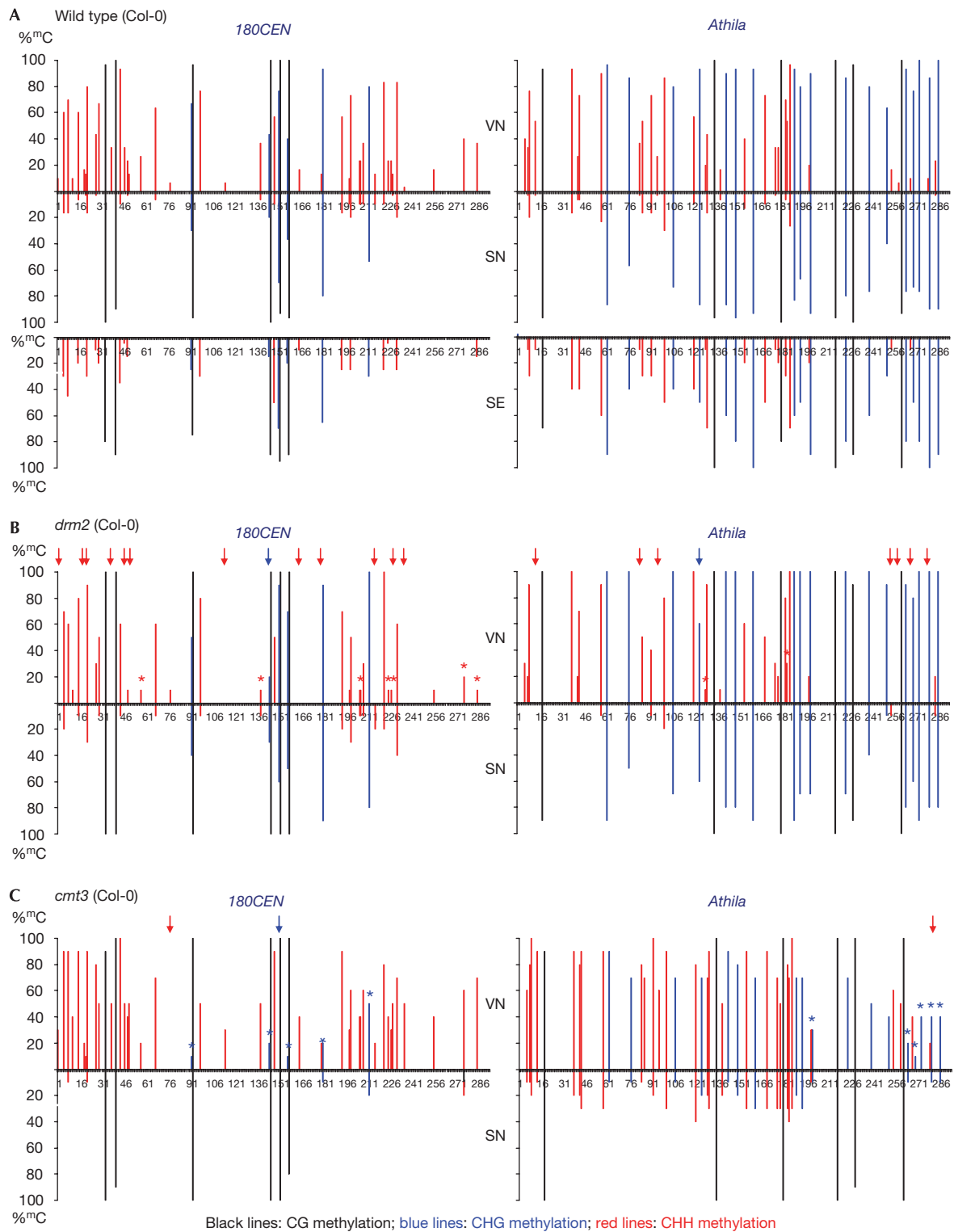
**Fig 1** | Cytological characterization of centromeric heterochromatin in sperm and vegetative nuclei of wild-type (Col-0) mature pollen. (A) A DAPI-stained mature pollen grain. (B) FISH image of SN and VN of pollen with a probe for *180CEN* repeats. Approximately 1,000 vegetative nuclei were examined and all of them showed extremely dispersed FISH signals. Immunostaining of (C) bulk histone H3; (D) CenH3 (HTR12) and H3K9me<sub>2</sub>; and (E) H3K9me<sub>2</sub> and H3K27me<sub>1</sub> in SN and VN. Immunostaining patterns similar to those shown were observed in all approximately 100 nuclei examined. (B–E) Nuclei were counterstained with DAPI (blue). Scale bars, 3 μm. DAPI, 4',6-diamidino-2-phenylindole; FISH, fluorescence *in situ* hybridization; SN, sperm nuclei; VN, vegetative nuclei.

methylation in SN and noticeably enhanced methylation in VN, suggesting that a subset of *180CEN* repeats is subjected to CHH hypermethylation in VN.

### Non-CG hypermethylation at centromeric DNA by DRM2

A characteristic of RdDM is CHH methylation, which is catalysed by DRM2. Therefore, we examined whether DRM2 is involved in the non-CG hypermethylation in VN by using an equivalent bisulphite sequencing analysis with the sorted *drm2* pollen nuclei. To evaluate the effect of mutation, we compared the number of hypermethylated non-CG sites and percentage of <sup>m</sup>C between the wild-type and mutant VN. We defined 'hypermethylated non-CG sites in VN in pollen' as the CHH or CHG sites that are methylated in more cloned DNA sequences from VN than from SN. We found a marked decrease in the number of hypermethylated non-CG sites in both the *180CEN* and *Athila* sequences analysed from *drm2* VN (Fig 2B). Specifically, 12 CHH sites and 1 CHG site in the *180CEN* sequences, and 7 CHH sites and 1 CHG site in the *Athila* sequences showed loss of hypermethylation in *drm2* in comparison with wild-type VN. In addition, many of the CHH sites that remained methylated in *drm2* VN showed a lower percentage of <sup>m</sup>C than in wild-type VN. A similar methylation defect was detected in *drm1 drm2* VN in the Wassilevskija background (supplementary Fig S2C online). These findings suggest that DRM2 is involved in *de novo* non-CG hypermethylation in the VN in pollen.

It is noteworthy that there were still hypermethylated non-CG sites in both the sequences analysed from the VN of the *drm2* and *drm1 drm2* mutants. DRM2 and CMT3 have a redundant function in accomplishing non-CG methylation (Chan *et al*, 2006). To test whether CMT3 is also involved in the *de novo* methylation process, we analysed the DNA sequences from the sorted *cmt3* SN and VN in the same manner (Fig 2C). As expected from a defect of *cmt3* in maintaining CHG methylation, a significant decrease in the percentage of <sup>m</sup>C was detected at all CHG sites in both the *cmt3* SN and VN compared with the wild type in the *180CEN* and *Athila* sequences. Nevertheless, all but one CHG sites at both regions in *cmt3* VN showed a higher percentage of <sup>m</sup>C than that in *cmt3* SN. This shows that *cmt3* VN do not lose CHG hypermethylation. Similarly, CHH hypermethylation remained unaffected in *cmt3* VN and, remarkably, many CHH sites showed an even higher percentage of <sup>m</sup>C than in wild-type VN. These findings suggest that CMT3 is not required for *de novo* non-CG methylation in wild-type VN. The lack of one DNA methyltransferase activity can activate alternative methylation pathways, resulting in aberrant *de novo* methylation (Mathieu *et al*, 2007). Thus, the partial loss of non-CG hypermethylation in the *drm2* mutants and the enhanced CHH hypermethylation in the *cmt3* mutant could be explained by *drm2* promoting CMT3 and, conversely, *cmt3* promoting DRM2, for the *de novo* methylation of centromeric repeats.



**Induction of RdDM on centromeric DNA in VN**

*NUCLEAR RNA POLYMERASE 4 SUBUNIT 1 (NRPD1)* and *NUCLEAR RNA POLYMERASE 5 SUBUNIT 1 (NRPE1)* encode the largest subunits of Pol IV and Pol V, respectively (Onodera

et al, 2005). As a second test for the involvement of RdDM in non-CG hypermethylation in the VN, we analysed DNA from the SN and VN of *nRPD1* and *nRPE1* pollen (Fig 4). Similarly to the *dnm2* mutants, we found a substantial decrease in the number of



◀ **Fig 2** | Bisulphite sequencing analysis of cytosine methylation in wild-type (Col-0), *drm2* and *cmt3* lines. The graphs show the percentage of methylation (%<sup>m</sup>C) at individual cytosines in cloned *180CEN* (left) and *Athila* (right) sequences from (A) sorted wild-type vegetative (top) and sperm (middle) nuclei, and seedlings (bottom); (B) sorted *drm2*; and (C) *cmt3* vegetative (top) and sperm (bottom) nuclei. Black lines, CG methylation; blue lines, CHG methylation; and red lines, CHH methylation. We define 'hypermethylated non-CG sites in VN in pollen' as the CHH or CHG sites that are methylated in more cloned DNA sequences from VN than from SN. Note that all CHH sites in both the *180CEN* (39 sites) and *Athila* (30 sites) sequences are hypermethylated in the wild-type VN. Red and blue arrows above the methylation lines indicate the CHH and CHG sites, respectively, at which hypermethylation is lost in mutant VN compared with wild-type VN. Red and blue asterisks mark the CHH and CHG sites, respectively, showing more than a 50% reduction in %<sup>m</sup>C in mutant VN compared with wild-type VN. Cytosine positions are indicated by numbers. The results are from 30 and 20 cloned sequences for wild-type pollen nuclei and seedlings, respectively, and 10 cloned sequences for *drm2* and *cmt3* pollen nuclei. Original data are shown in supplementary Fig S4 online. *Cmt3*, chromomethylase 3; *drm2*, domains rearranged methyltransferase 2; SE, seedlings; SN, sperm nuclei; VN, vegetative nuclei.



**Fig 3** | Southern hybridization analysis of cytosine methylation at bulk *180CEN* repeats in sperm and vegetative nuclei of wild-type (Col-0) mature pollen. A subclass of *180CEN* repeats contains one *MspI/HpaII* (CCGG) site and two *CviAII/NlaIII* (CATG) sites. Genomic DNA (30 ng) extracted from sorted SN or VN was digested using *MspI*, *HpaII*, *CviAII* or *NlaIII*, separated by gel electrophoresis and probed with *180CEN* DNA. *MspI* and *HpaII* both cut CCGG but differ in that *MspI* is inhibited by methylation of outer C, whereas *HpaII* is inhibited by methylation of inner C. *CviAII* and *NlaIII* both cut CATG, but differ in that only *NlaIII* is inhibited by methylation. SN, sperm nuclei; VN, vegetative nuclei.

hypermethylated non-CG sites and the percentage of <sup>m</sup>C in the *180CEN* sequences from both the *nrpd1* and *nrpe1* VN. Interestingly, only *nrpe1* VN showed a similar obvious methylation defect in the *Athila* region. This more subtle or non-existent effect of *nrpd1* on the *Athila* region compared with the *180CEN* sequences raises the possibility that Pol IV is essential for transcribing the *180CEN*, but not the *Athila* region to produce siRNAs that trigger RdDM.

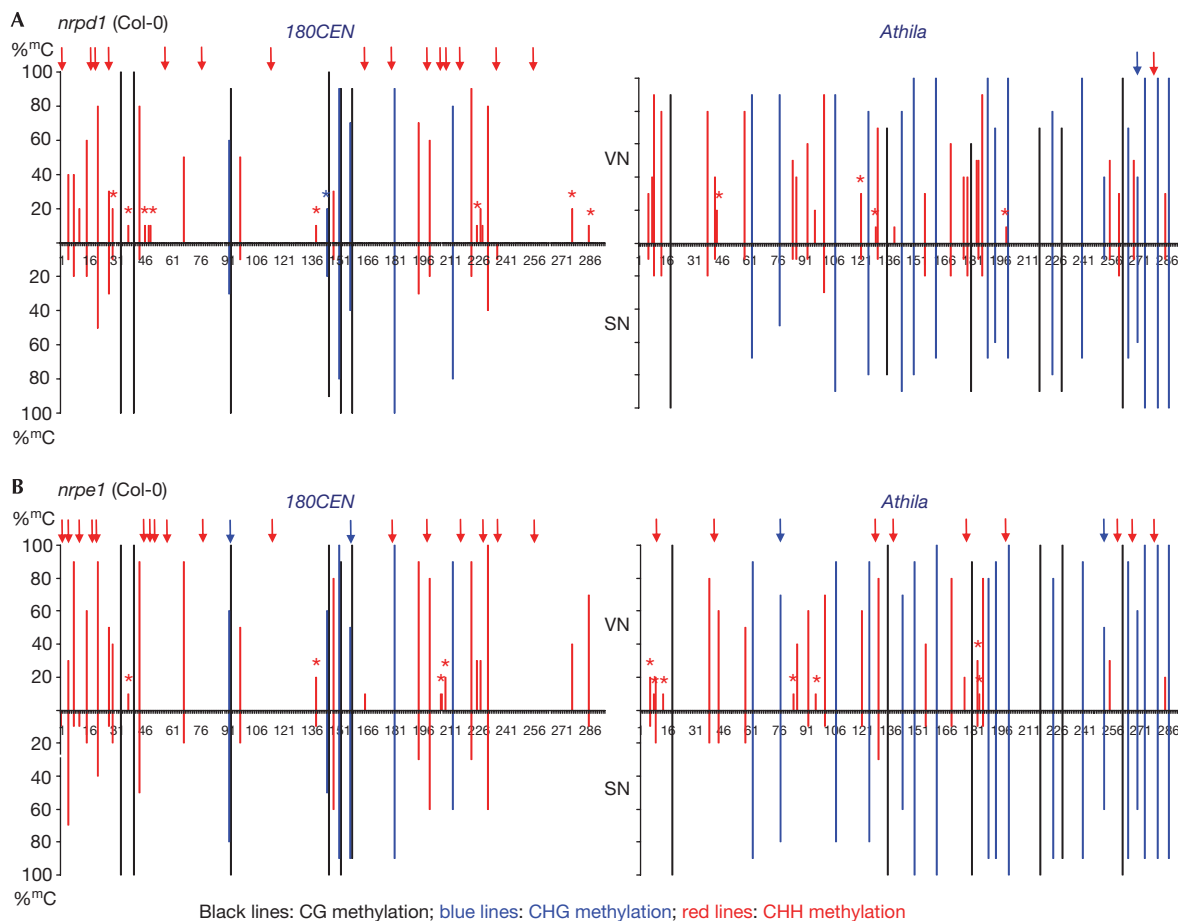
Therefore, we conclude that RdDM is responsible for the induction of *de novo* methylation at centromeric DNA.

## DISCUSSION

The SUCROSE NONFERMENTABLE 2 (SNF2)-like chromatin-remodelling factor, DDM1, is the main regulator of constitutive heterochromatin and transposable elements (TEs). Centromeric repeats and most TEs lose DNA methylation, repressive histone modifications and 24-nt TE siRNAs in *ddm1* mutants (Lippman et al, 2004). Interestingly, Slotkin et al (2009) have reported recently that DDM1 is lost in VN in wild-type pollen, coincident with transcriptional reactivation, transposition and DNA hypomethylation of TEs. However, unlike in *ddm1* mutants, bulk *180CEN* repeats remain heavily methylated (Fig 3) and transcriptionally silent in VN (supplementary Fig S3 online; Slotkin et al, 2009).

An intriguing question is how downregulation of DDM1 could result in differential methylation effects on centromeric repeats and non-centromeric TEs in VN. The most likely timing of DDM1 shutdown takes place after the first pollen mitotic division has given rise to the generative and vegetative cells. At this stage, CG methylation is propagated by the 'maintenance methylase' activity of MET1, which depends on DDM1. The *ddm1*-induced DNA hypomethylation of centromeric repeats probably results from passive demethylation, which could account for why CG methylation remains in VN, as they do not divide any more in pollen. Conversely, an active demethylation process seems to be involved in the loss of DNA methylation in TE sequences in the VN (Slotkin et al, 2009). It remains unclear how a DNA demethylase recognizes its target TEs and why centromeric repeats are not susceptible to demethylation. It should be noted that the N-terminal amino acids of CenH3 are different from those of canonical H3 in animals and plants. Thus, it is conceivable that the presence or absence of specific marks on CenH3 chromatin at centromeric repeats inhibits the demethylation machinery.

In contrast to the dispersal of chromocentres containing pericentromeric 5S ribosomal DNA clusters in *Pol IV* mutants, which correlates with the loss of cytosine methylation in all sequence contexts, chromocentres containing *180CEN* repeats remain condensed and the methylation of *180CEN* repeats is not appreciably affected in the mutants (Onodera et al, 2005). Our finding of infrequent CHH methylation, the characteristic of RdDM, at *180CEN* repeats in seedlings and SN of pollen reinforces the idea that RdDM does not work efficiently for constitutive heterochromatin. Nevertheless, abundant 24-nt siRNAs corresponding to *180CEN* repeats are produced in *Arabidopsis* and the RdDM components RDR2 and DCL3 contribute to the siRNA production (May et al, 2005). Why the *180CEN* siRNAs do not efficiently trigger RdDM of *180CEN* repeats remains unknown.



**Fig 4** | Bisulphite sequencing analysis of cytosine methylation in *nrpd1* and *nrpe1* lines. The graphs show the percentage of methylation (%<sup>m</sup>C) at individual cytosines in cloned *180CEN* (left) and *Athila* (right) sequences from sorted vegetative (top) and sperm (bottom) nuclei of (A) *nrpd1* and (B) *nrpe1* pollen. Black lines, CG methylation; blue lines, CHG methylation; and red lines, CHH methylation. Red and blue arrows above the methylation lines indicate the CHH and CHG sites, respectively, at which hypermethylation is lost in mutant VN compared with wild-type VN. Red and blue asterisks mark the CHH and CHG sites, respectively, showing more than a 50% reduction in %mC in mutant VN compared with wild-type VN. The results are from 10 cloned sequences for both mutants. Original data are shown in supplementary Fig S4 online. *nrpd1*, nuclear rna polymerase 4 subunit 1; *nrpe1*, nuclear rna polymerase 5 subunit 1; SN, sperm nuclei; VN, vegetative nuclei.

### Speculation

Facultative heterochromatin undergoes transition from a silent to an active state and *vice versa*, whereas constitutive heterochromatin is continuously silent. Hence, it makes sense that *de novo* DNA methylation and demethylation control the reversible switch of gene expression in facultative heterochromatin, and that the self-enforcing mechanisms of DNA and H3K9 methylation act on constitutive heterochromatin. Given the recent hypothesis regarding the interaction of the RdDM machinery with DNA glycosylases (Kanno *et al*, 2005a), one could imagine that the RdDM of constitutive heterochromatin might disturb the stable propagation of DNA methylation and the silent state. Thus, it is reasonable to speculate that constitutive heterochromatin uses various mechanisms for blocking RdDM. We propose that a specific chromatin mark—or marks—dictated by DDM1 (for example, H3K9me2) prevents access of the downstream RdDM complex containing DRM2 and Pol V. Downregulation of DDM1 in VN in pollen leads to the demethylation of heterochromatic

H3K9me2, which then causes disruption of centromeric heterochromatin and CenH3 chromatin at centromeres, allowing the RdDM of centromeric repeats.

### METHODS

**Plant material and growth.** We carried out all analyses using wild-type *Arabidopsis thaliana* ecotypes Columbia (Col-0) and Wassilevskija (WS). All mutants used are in the Col-0 background, with the exception of *drm1 drm2*, which is in the WS background. The *cmt3* mutant was originally in the WS background and was out-crossed six times to the Col-0 ecotype. We used the following alleles: *ddm1-10* (SALK\_000590), *drm1-1 drm2-1* (Cao & Jacobsen, 2002), *drm2-2* (SALK\_150863), *nrpd1-4* (formerly *nrpd1a-4*; SALK\_083051), *nrpe1/drd3-1* (formerly *nrpd1b*; Kanno *et al*, 2005b) and *cmt3-i11* (Bartee *et al*, 2001). Seedlings were cultivated under sterile conditions on solid  $\frac{1}{2}$  MS medium in a 22 °C chamber under a 16/8 h light/dark photoperiod for 20 days.

**Immunostaining and FISH.** Immunostaining was carried out according to Soppe *et al* (2002) with modifications, and FISH was carried out according to Pedrosa *et al* (2002), as described in the supplementary information online.

**Sorting the sperm and vegetative nuclei of pollen.** Pollen nuclei were prepared from mature pollen grains, stained with SYBR Green I (Roche Diagnostics GmbH, Mannheim, Germany) or propidium iodide, and SN and VN were sorted as described in the supplementary information online.

**Bisulphite sequencing analysis of cytosine methylation.** Genomic DNA extracted from the sorted pollen nuclei or seedlings was treated with bisulphite using the EpiTect bisulphite kit (Qiagen, Hilden, Germany). A single unique allele of the *180CEN* repeat and of the *Athila* region were amplified by PCR of the bisulphite-treated DNA, cloned and sequenced as described in the supplementary information online. Complete bisulphite reactions were confirmed by sequencing a region of an unmethylated endogenous *DDM1* gene or a cloned exogenous *180CEN* repeat mixed with genomic DNA.

**Southern hybridization analysis of cytosine methylation.** Southern hybridizations with a probe for bulk *180CEN* repeats were carried out as described in the supplementary information online. To verify that digestions were complete, digested DNA was subjected to PCR to amplify a region of an unmethylated *DDM1* gene, containing CCGG and CATG sites. Hybridization signals were visualized using the Amersham Gene Images AlkPhos Direct labelling and detection system (GE Healthcare, Little Chalfont, Buckinghamshire, UK).

**Supplementary information** is available at *EMBO reports* online (<http://www.emboreports.org>).

#### ACKNOWLEDGEMENTS

We thank G. Stengl for fluorescence-activated cell sorting, I. Schubert for anti-CenH3, T. Jenuwein for providing anti-H3K27me1, R. Tsien for *pmRFP1*, O. Mittelsten Scheid for *drm1 drm2*, M. Siomos for reviewing the paper, and M. Matzke for *ddm1, drm2, nrpd1, nrpe1* and discussion. H.T. thanks O. Esina for inspiration. This work was supported by a grant from the UK Biotechnology and Biological Sciences Research Council to D.T.

#### CONFLICT OF INTEREST

The authors declare that they have no conflict of interest.

#### REFERENCES

- Bartee L, Malagnac F, Bender J (2001) *Arabidopsis cmt3* chromomethylase mutations block non-CG methylation and silencing of an endogenous gene. *Genes Dev* **15**: 1753–1758
- Cao X, Jacobsen SE (2002) Role of the *Arabidopsis* DRM methyltransferases in *de novo* DNA methylation and gene silencing. *Curr Biol* **12**: 1138–1144
- Chan SW, Henderson IR, Zhang X, Shah G, Chien JS, Jacobsen SE (2006) RNAi, DRD1, and histone methylation actively target developmentally important non-CG DNA methylation in *Arabidopsis*. *PLoS Genet* **2**: e83
- Folco HD, Pidoux AL, Urano T, Allshire RC (2008) Heterochromatin and RNAi are required to establish CENP-A chromatin at centromeres. *Science* **319**: 94–97
- Herr AJ, Jensen MB, Dalmy T, Baulcombe DC (2005) RNA polymerase IV directs silencing of endogenous DNA. *Science* **308**: 118–120
- Jenuwein T, Allis CD (2001) Translating the histone code. *Science* **293**: 1074–1080
- Kankel MW, Ramsey DE, Stokes TL, Flowers SK, Haag JR, Jeddeloh JA, Riddle NC, Verbsky ML, Richards EJ (2003) *Arabidopsis MET1* cytosine methyltransferase mutants. *Genetics* **163**: 1109–1122
- Kanno T, Aufsatz W, Jaligot E, Mette MF, Matzke M, Matzke AJ (2005a) A SNF2-like protein facilitates dynamic control of DNA methylation. *EMBO Rep* **6**: 649–655
- Kanno T, Huettel B, Mette MF, Aufsatz W, Jaligot E, Daxinger L, Kreil DP, Matzke M, Matzke AJ (2005b) Atypical RNA polymerase subunits required for RNA-directed DNA methylation. *Nat Genet* **37**: 761–765
- Lindroth AM, Cao X, Jackson JP, Zilberman D, McCallum CM, Henikoff S, Jacobsen SE (2001) Requirement of CHROMOMETHYLASE3 for maintenance of CpXpG methylation. *Science* **292**: 2077–2080
- Lippman Z *et al* (2004) Role of transposable elements in heterochromatin and epigenetic control. *Nature* **430**: 471–476
- Mathieu O, Probst AV, Paszkowski J (2005) Distinct regulation of histone H3 methylation at lysines 27 and 9 by CpG methylation in *Arabidopsis*. *EMBO J* **24**: 2783–2791
- Mathieu O, Reinders J, Caikovski M, Smathajitt C, Paszkowski J (2007) Transgenerational stability of the *Arabidopsis* epigenome is coordinated by CG methylation. *Cell* **130**: 851–862
- Matzke MA, Birchler JA (2005) RNAi-mediated pathways in the nucleus. *Nat Rev Genet* **6**: 24–35
- May BP, Lippman ZB, Fang Y, Spector DL, Martienssen RA (2005) Differential regulation of strand-specific transcripts from *Arabidopsis* centromeric satellite repeats. *PLoS Genet* **6**: 705–713
- McCormick S (2004) Control of male gametophyte development. *Plant Cell* **16**: 142–153
- Onodera Y, Haag JR, Ream T, Nunes PC, Pontes O, Pikaard CS (2005) Plant nuclear RNA polymerase IV mediates siRNA and DNA methylation-dependent heterochromatin formation. *Cell* **120**: 613–622
- Pedrosa A, Sandal N, Stougaard J, Schweizer D, Bachmaier A (2002) Chromosomal map of the model legume *Lotus japonicus*. *Genetics* **161**: 1661–1672
- Probst AV, Franz PF, Paszkowski J, Mittelsten Scheid O (2003) Two means of transcriptional reactivation within heterochromatin. *Plant J* **33**: 743–749
- Richards EJ, Elgin SC (2002) Epigenetic codes for heterochromatin formation and silencing: rounding up the usual suspects. *Cell* **108**: 489–500
- Saze H, Mittelsten Scheid O, Paszkowski J (2003) Maintenance of CpG methylation is essential for epigenetic inheritance during plant gametogenesis. *Nat Genet* **34**: 65–69
- Slotkin RK, Vaughn M, Borges F, Tanurdzić M, Becker JD, Feijó JA, Martienssen RA (2009) Epigenetic reprogramming and small RNA silencing of transposable elements in pollen. *Cell* **136**: 461–472
- Soppe WJ, Jasencakova Z, Houben A, Kakutani T, Meister A, Huang MS, Jacobsen SE, Schubert I, Franz PF (2002) DNA methylation controls histone H3 lysine 9 methylation and heterochromatin assembly in *Arabidopsis*. *EMBO J* **21**: 6549–6559
- Talbert PB, Masuelli R, Tyagi AP, Comai L, Henikoff S (2002) Centromeric localization and adaptive evolution of an *Arabidopsis* histone H3 variant. *Plant Cell* **14**: 1053–1066
- Tessadori F, Chupeau MC, Chupeau Y, Knip M, Germann S, van Driel R, Franz P, Gaudin V (2007a) Large-scale dissociation and sequential reassembly of pericentric heterochromatin in dedifferentiated *Arabidopsis* cells. *J Cell Sci* **120**: 1200–1208
- Tessadori F, Schulkes RK, van Driel R, Franz P (2007b) Light-regulated large-scale reorganization of chromatin during the floral transition in *Arabidopsis*. *Plant J* **50**: 848–857
- Xie Z, Johansen LK, Gustafson AM, Kasschau KD, Lellis AD, Zilberman D, Jacobsen SE, Carrington JC (2004) Genetic and functional diversification of small RNA pathways in plants. *PLoS Biol* **2**: e104