

Research

Open Access

Long-term gas exchange characteristics as markers of deterioration in patients with cystic fibrosis

Richard Kraemer*¹, Philipp Latzin^{1,2}, Isabelle Pramana^{1,2}, Pietro Ballinari⁴, Sabina Gallati^{1,3} and Urs Frey^{1,2}

Address: ¹Department of Paediatrics, University of Berne, Inselspital CH-3010 Berne, Switzerland, ²Division of Paediatric Respiratory Medicine, Department of Paediatrics, University of Berne, Inselspital, CH-3010 Berne, Switzerland, ³Division of Human Genetics, Department of Clinical Research, University of Berne, CH-3010 Berne, Switzerland and ⁴Institute of Psychology, University of Berne, Muesmattstr. 45, CH-3000 Bern Switzerland

Email: Richard Kraemer* - richard.kraemer@insel.ch; Philipp Latzin - philipp.latzin@insel.ch; Isabelle Pramana - isabelle.pramana@insel.ch; Pietro Ballinari - pietro.ballinari@psy.unibe.ch; Sabina Gallati - sabina.gallati@insel.ch; Urs Frey - urs.frey@insel.ch

* Corresponding author

Published: 12 November 2009

Received: 4 August 2009

Respiratory Research 2009, **10**:106 doi:10.1186/1465-9921-10-106

Accepted: 12 November 2009

This article is available from: <http://respiratory-research.com/content/10/1/106>

© 2009 Kraemer et al; licensee BioMed Central Ltd.

This is an Open Access article distributed under the terms of the Creative Commons Attribution License (<http://creativecommons.org/licenses/by/2.0>), which permits unrestricted use, distribution, and reproduction in any medium, provided the original work is properly cited.

Abstract

Background and Aim: In patients with cystic fibrosis (CF) the architecture of the developing lungs and the ventilation of lung units are progressively affected, influencing intrapulmonary gas mixing and gas exchange. We examined the long-term course of blood gas measurements in relation to characteristics of lung function and the influence of different *CFTR* genotype upon this process.

Methods: Serial annual measurements of PaO₂ and PaCO₂ assessed in relation to lung function, providing functional residual capacity (FRC_{pleth}), lung clearance index (LCI), trapped gas (V_{TG}), airway resistance (sR_{eff}), and forced expiratory indices (FEV₁, FEF₅₀), were collected in 178 children (88 males; 90 females) with CF, over an age range of 5 to 18 years. Linear mixed model analysis and binary logistic regression analysis were used to define predominant lung function parameters influencing oxygenation and carbon dioxide elimination.

Results: PaO₂ decreased linearly from age 5 to 18 years, and was mainly associated with FRC_{pleth}, ($p < 0.0001$), FEV₁ ($p < 0.001$), FEF₅₀ ($p < 0.002$), and LCI ($p < 0.002$), indicating that oxygenation was associated with the degree of pulmonary hyperinflation, ventilation inhomogeneities and impeded airway function. PaCO₂ showed a transitory phase of low PaCO₂ values, mainly during the age range of 5 to 12 years. Both PaO₂ and PaCO₂ presented with different progression slopes within specific *CFTR* genotypes.

Conclusion: In the long-term evaluation of gas exchange characteristics, an association with different lung function patterns was found and was closely related to specific genotypes. Early examination of blood gases may reveal hypocarbia, presumably reflecting compensatory mechanisms to improve oxygenation.

Background

Mixing of inspired gas is a prerequisite for effective respiration and is dependent upon the architecture of the lung. In children with cystic fibrosis (CF), the architecture of the developing lungs and the ventilation of peripheral lung units are progressively affected, influencing the efficiency of gas mixing and gas exchange. We have previously reported observations that inequalities in ventilation occur significantly earlier in the course of lung function decline than changes in other functional characteristics [1]. Moreover, we have recently demonstrated in this *Journal*, that pulmonary hyperinflation and development of trapped gas represent major functional features of disease progression in children with CF [2]. In agreement with several author groups, airway dysfunction and pulmonary deterioration in CF is thought to be expressed by ventilation inhomogeneities [1-6], pulmonary hyperinflation [2,7] and gas trapping [2,8,9] occurring very early in life [5,10,11]. The different patterns of functional derangements stress the need to include a range of lung function tests including gas exchange characteristics and to investigate whether the *CFTR* genotype has an impact upon these processes in CF patients, as has been previously reported [12-14].

Limited knowledge exists as to whether gas exchange parameters measured under resting conditions are helpful in defining progression of lung disease in children with CF. A correlation between survival and adequacy of gas exchange, and the hypothesis that carbon dioxide retention may be a predictor of survival, was initially published by Wagener et al. in 1980 [15]. Mechanisms of impaired gas exchange and their influence on ventilation-perfusion inequality through shunts have recently been studied by Soni et al. [16]. A previous study of ours performed in a limited number of children with advanced stages of CF showed the interdependence of oxygenation, ventilation inhomogeneities and trapped gas assemblage [8].

The aim of this prospectively acquired cohort study was to evaluate the onset and course of deterioration of gas exchange in relation to changes in lung volume, ventilation distribution, trapped gas and airway obstruction, as well as the influence of specific genotypes in CF patients, from the 5th to the 18th year of life. Following up on our recent work published in this *Journal*, we looked at the long-term course of gas exchange characteristics in relation to different facets of lung function [1,2].

Study population and methods

Bernese Cystic Fibrosis Patient Data Registry

Patients were recruited from the Bernese Cystic Fibrosis Patient Data Registry, prospectively developed as an extension of the American Cystic Fibrosis Patient Registry founded by Warwick in 1966 [17]. Standard clinical and

biomedical parameters, as well as gas exchange characteristics and lung function data of a total of 204 CF patients regularly seen at the outpatient clinic between 1978 and 2008 are documented in the registry. The inclusion criteria for the present study were: (i) CF diagnosis based on the presence of characteristic phenotypic features [18], (ii) confirmed by a duplicate quantitative pilocarpine iontophoresis sweat test measuring both Na and Cl values > 60 mEq/L as well as by (iii) genotype identification using extended mutation screening of both alleles [19,20], and (iv) complete documentation of a minimum of 3 blood gas analyses with concomitantly measured lung function parameters performed annually between the ages of 5 to 18 yrs, investigated during clinical stability. Twenty of the 204 patients (9.8%) were younger than 6 years of age (blood gas analysis and lung function data not available), and in 6 CF patients (2.9%), fewer than 3 annual measurements were available. Some of lung function data in the database have been reported previously with respect to the phenomenon of ventilation inhomogeneities [1] and pulmonary hyperinflation [2], and the sensitization against *Aspergillus fumigatus* [21]. There is no overlap with previous publications with respect to the major topic of the present report dealing with gas exchange characteristics. This study protocol was approved by the Departmental Ethics Committee of the University Children's Hospital Berne and by the Government Ethics Committee of the State of Berne, Switzerland.

Pulmonary Function Measurements

Whole-body plethysmography and the multibreath nitrogen washout (MBNW) technique provided data pertaining to functional residual capacity (FRC_{pleth} , FRC_{MBNW}), lung clearance index (LCI), volume of trapped gas (V_{TC}), effective specific airway resistance (sR_{eff}), and forced expiratory indices (FEV_1 , FEF_{50}). Measurement techniques have been described in detail in previous papers [1,2,21]. All values were expressed by z-transformation in standard deviation scores (SDS), based on gender- and age-specific regression equation [22-25], specifically calculated for each lung function device as previously presented [1,2]. Full details concerning lung function techniques, calculation of SDS, and the statistical methods are given in the additional file 1.

Blood Gas Analysis

In children, the preferred technique for routine blood gas analysis is the sampling of arterialized capillary blood from the earlobe [8,26,27], a technique that has been established for clinical use and applied in various long-term studies [28-31]. The accuracy of this technique depends upon careful preparation of the earlobe [26], puncture technique [26,27] and immediate analysis. Several author groups have validated the accuracy of this particular technique for clinical and long-term evaluation of

gas exchange [26,27,32-34], provided certain important methodological conditions are fulfilled. Therefore, oxygen (PaO_2) and carbon dioxide (PaCO_2) tensions were measured in arterialized blood collected from the ear lobe [8,26,27,33] using a Radiometer ABL5, Copenhagen, Denmark.

Blood gas sampling was performed after whole-body plethysmography and before the multibreath nitrogen washout measurements. The procedure was done in a quiet atmosphere and our patients were familiar with the process. The ear lobe was prepared according to the technique initially described [26,27], and previously established in our laboratory [8]. Vasodilatation of the earlobe was achieved by rubbing the lobe with a nicotinate paste (Finalgon) [26,27,32,33] for at least 10 minutes and heating with an infrared lamp. During quiet breathing, the arterialized blood was collected from a drop on the inferior aspect of the earlobe, from which it was drawn into 3 thin heparinized glass capillary tubes by surface tension under the guidance of a gloved finger over the open end of the tube. The capillary tubes were then kept on ice until aspiration into the gas analyzer, which was carried out immediately after the blood draw.

Definitions of Gas Exchange Disturbance at Rest in Children

Details of the blood gas analysis performed by earlobe puncture technique [8,26,27], and information on reproducibility are given in the additional file 1. Most *definitions of hypoxemia* are related to arterial blood gas values obtained during exercise testing predominantly performed in adult patients. There is no clearly defined cut-off indicating gas exchange impairment at rest in children with lung disease. Lamarre et al. [35], as well as Stokes et al. [36] defined hypoxemia at rest in children as a $\text{PaO}_2 < 80$ mmHg. Gaultier et al. suggested defining hypoxemia in children as less than 90% of predicted values [27,37]. We re-calculated the original data of Gaultier et al. using a power function based on age in years and taking the 90 % level of confidence of Gaultier's predicted values. Accordingly, the lower limit would be 78.3 mmHg for children aged 6 years, and 81.9 mmHg for children aged 8 years [27,37]. We therefore took a PaO_2 level of 80 mmHg as the lowest limit defining sufficient oxygen uptake [27].

Anthropometric data

Heights and weights were measured by experienced nurses, using a Harpenden stadiometer and according to recommended procedures [38]. The computation of longitudinal weight and height data was based on calculation of age- and gender-corrected body mass index (BMI) expressed as z-scores, using the method and values for children reported by Cole et al [39].

Genotype Analysis

All patients were genotyped by a SSCP/HD scanning method followed by direct sequencing of the variants, thus permitting rapid and sensitive detection of 97-98 % of known and novel (newly identified) CF mutations, as previously described [19,40]. Genomic DNA was extracted from EDTA blood samples using the QIAamp Maxi Kit (Qiagen) according to the manufacturer's recommendations and quantified by spectrophotometry. In addition, a non-invasive method of buccal cell brushing [20] was used to obtain DNA from premature infants, recipients of previous blood transfusions and infants with meconium ileus. Mutation screening of the entire coding sequences of the *CFTR* gene (including the 27 exons and exon/intron boundaries, intron 11 and 19, as well as the promoter region) was performed in each patient using a well-established single strand conformation polymorphism/heteroduplex (SSCP/HD) analysis.

Data Computation and Statistical Evaluation

Repeated serial measurements of lung function data, acquired annually, were calculated as annual mean \pm SEM changes for presentation, and the statistical analysis included procedures such as univariate regression procedures, linear mixed model (LMM) analysis [41], and binary logistic regression analysis, using SPSS (version 17, SPSS Inc., Chicago, USA). Graphical presentation was completed using Prism software (version 4.0, GraphPad Software, Inc., San Diego, USA). In order to avoid potential confounding factors such as age at diagnosis, improvement of management and/or treatment over the years of observation as described by Soni et al [16], we assessed the influence of these potential confounders by 3 characteristics such as "year at birth", "year at diagnosis" and the "year at testing". The "year at test" proved to be the principal confounder influencing the course of PaO_2 significantly ($t = 2.831$; $p = 0.005$). Consequently, "year at test" was taken as a covariate in all statistical analyses.

Linear Mixed Model Analysis (LMM)

The application of linear mixed model analysis evaluating repeated measurements has several advantages. In contrast to General Linear Models (GLM), the time points at which measurements are obtained need not be equal for all subjects, and therefore, subjects with missing data are not dropped from the analysis. In addition LMM analysis features a single model for a repeated measurement approach (i) assessing influences of various effects, (ii) estimating these effects at each time point, and (iii) comparing them correctly against a background of between-patient variation. There is no need to calculate mean values across all time points (to obtain the overall effect influences), or to analyze time points separately (to obtain specific effects at each time point). Standard errors for effects at individual time points are calculated using

information from all time points and are, therefore, more robust than standard errors calculated from separate time points. Finally, the covariance pattern of the repeated measurements can be determined and taken into account (e.g. the model can figure out whether measurements are correlated across all time points, or whether they show more complex pattern over time) [42]. These are important advantages especially for observational studies, where people often miss regularly scheduled clinic appointments or experimental sessions. In addition, LMM analysis offers the possibility to select the best variance-covariance structure for repeated measurement data, and interactions of interest can be specified [43]. More details to the discussion LMM versus GLM analysis are given in the additional file 1, under the heading "Options of Statistical Modeling".

Results

Characteristics of Study Population

The inclusion criteria were fulfilled for a patient cohort of 178 CF patients (88 males; 90 females) recruited from the Bernese CF Registry (87.3%). Their follow-up statistics and the distribution of CFTR mutations are given in Table

1. From the entire database, 26 patients (12.7%) were excluded from evaluation because of insufficient number of tests (<3 per year) or an age younger than 5 years. Of these 178 CF patients, 14 (6.9%) died during the observation period with a mean age (range) at death of 16.4 ± 5.9 (8.6 to 24.2) years. One girl died in a car accident and the remaining patients had a PaO₂ of 56.5 (49.4 to 63.1) mmHg, and a PaCO₂ of 40.8 (36.2 to 46.8) mmHg in the last year of life. The individual follow-up data of these CF patients who died during the observation period are given in the additional file 1.

All patients except 3 suffered from pancreatic insufficiency. *P. aeruginosa* infection was present in 111 patients (67.7%), with a mean age at onset of 5.7 years (range 0.1 to 20.5 years). Twenty-three patients were intermittently colonized and 30 remained free from *P. aeruginosa* colonization. Five patients underwent lung transplantation and in 2 the liver was transplanted. Within this study cohort of patients, a total of 1457 tests were performed representing a median (range) of 8.1 (3-15) test sets per child, or 68.2 (37-90) test sets per year of observation. Gender was equally distributed. According to the frequencies in our

Table 1: Patient cohort (A), data base characteristics (B), and distribution of CFTR mutations (C) taken from the Bernese CF Registry (n = 178, 87.3% of a total number of 204 CF patients)

A					
Patient cohort follow-up statistics					
Gender distribution of patients			Blood gas tests within age periods		
	n	%			
- males	88	49.4	5 to 8 y	427/1457	29.3%
- females	90	50.6	9 to 14 y	527/1457	36.2%
	178	100	15 to 18 y	503/1457	34.5%
From entire database, 26 patients (12.7%) excluded because of insufficient number of tests, (6) or age < 6 years (20)					
B					
Blood gas test and lung function measurement follow-up statistics					
Number of blood gas tests median (range)			Blood gas tests per year of observation		
Total of tests	1457		1987 to 1993	326/1457	22.4%
per child	8.1 (3-15)		1994 to 2000	539/1457	37.0%
per year of observation	68.2 (37-90)		2001 to 2008	592/1457	40.6%
C					
Distribution of CFTR mutations					
			n	%	
Inframe/inframe (F508del[2])	a		103	57.9	
Inframe/nonsense	b		22	12.4	
Frameshift/F508del	c		19	10.7	
Frameshift/non-F508del	d		12	6.7	
Inframe/splicesite	e		7	3.9	
Miscellaneous	f		15	8.4	
Total			178	100.0	
Equal distribution of CFTR genotypes over age range and over years of observation					

CFTR: cystic fibrosis transmembrane regulator

population-specific *CFTR* genotype distribution, the patients were stratified into 6 groups consisting of (a) F508del homozygotes F508del[2] (inframe/inframe): n = 103 (57.9%), (b) R553X, G542X, Q525X and E585X compound heterozygotes with F508del (inframe/nonsense mutations): n = 22, (12.4%), (c) 3905insT compound heterozygotes 3905insT/F508del (frameshift/F508del): n = 19, (10.7%), (d) 3905insT compound heterozygotes with other than F508del (frameshift/non-F508del): n = 12, (6.7%), (e) 1717-1G>A, 621+1G>T and 4005+1G>A compound heterozygotes with F508del (inframe/splice-site): n = 7 (3.9%), and (f) miscellaneous genotypes n = 15, (8.4%). The genotypes were equally distributed over the age-range studied and the years of observation.

Deterioration of Gas Exchange Characteristics related to Age

In Figure 1 age-related annual changes of PaO₂ and PaCO₂ (mean ± SEM) are shown, and in the following section some aspects of hypoxemia, hypercapnia, as well as a new phenomenon of hypocarbia are presented.

Hypoxemia. Overall PaO₂ presented with a linear decline from a mean ± SEM of 80.7 ± 1.9 mmHg at 5 years of age to a mean of 69.9 ± 1.6 mmHg at age 18 years. As FEV₁ is the most commonly used lung function parameter internationally, the figure additionally shows the PaO₂ decline within 2 subgroups stratified according to normal FEV₁ (z-score > -2 SDS) or abnormal FEV₁ (z-score < -2 SDS). The measurements within the 2 subgroups were equally distributed over the age range studied. Unpaired *t*-test with Welch' correction compared PaO₂ measurements with normal FEV₁ (46.8%) presenting a mean ± SEM oxygenation of 76.9 ± 0.62 mmHg versus PaO₂ measurements with a FEV₁ < -2 SDS with a mean oxygenation of 70.2 ± 0.70 mmHg. This significant difference in PaO₂ decline was mainly due to a mean difference of 6.7 ± 0.94 mmHg between the FEV₁-subgroups (*p* < 0.0001) and not to a difference in their slopes.

The annual changes in PaCO₂ demonstrated a more complex course. The mean PaCO₂ of 33.2 ± 0.45 mmHg at 5 years of age showed a transient stagnation in a large proportion of patients before rising to a mean of 36.1 ± 0.47 mmHg at the age of 18 years. This phenomenon of low PaCO₂ measurements was observed in 103 of the 164 patients (62.8%), mainly associated with a FEV₁ > -2SDS, and occurred over an age range of 5.8 to 15.8 years. An unpaired *t*-test with Welch' correction comparing PaCO₂ measurements with a mean PaCO₂ of 33.7 ± 0.32 mmHg for blood gas measurements associated with normal FEV₁ versus a mean PaCO₂ of 35.1 ± 0.29 mmHg in association with abnormal FEV₁ also revealed a significantly different PaCO₂ course with a mean difference of 2.4 ± 0.6 mmHg between the FEV₁-subgroups (*p* = 0.0002).

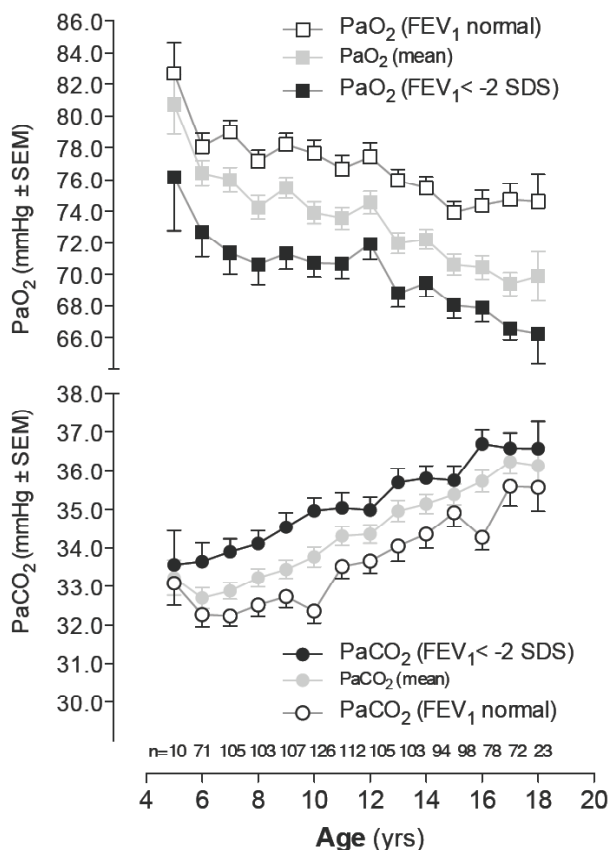


Figure 1
Annual changes of gas exchange characteristics (PaO₂, PaCO₂) shown as mean ± SEM of repeated annual measurements over the age range 5 to 18 years (halftone symbols), stratified into measurements concomitantly obtained under normal FEV₁ > -2 SDS (open symbols) and abnormal, FEV₁ < -2 SDS (solid symbols). Measurement numbers (n) are given along the x-axis.

Hypercapnia, defined as a PaCO₂ > 45 mmHg at rest, was observed only in a few patients in our collective. In contrast, we were surprised by some very low PaCO₂ values occurring during the course between ages 5 to 12 years (Figure 1).

Hypocarbia, and especially a lower level for PaCO₂ at rest in children has not yet been defined internationally. Using three different statistical techniques (binary logistic regression, ROC and discriminant analysis) explained in detail in the additional file 1, hypocarbia was defined as a PaCO₂ less than or equal to 34 mmHg.

Associations with Genotype

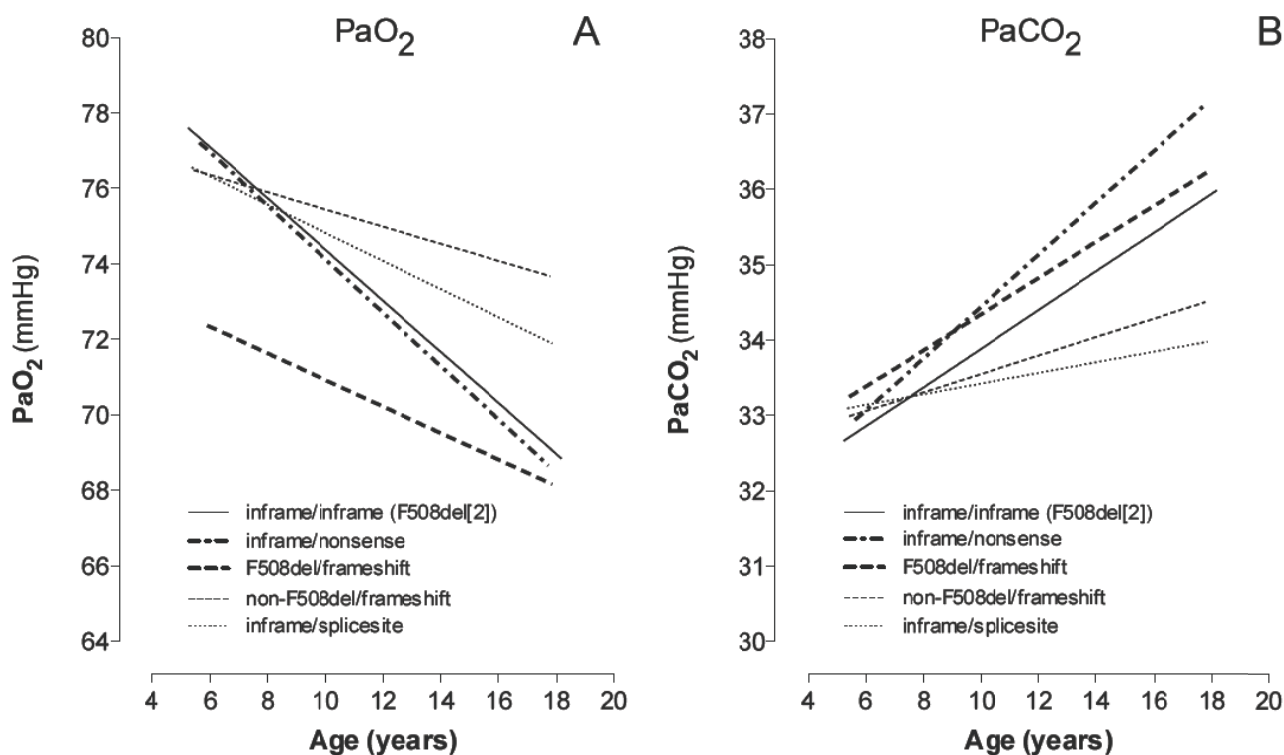
A potential association between gas exchange characteristics and genotypes was investigated. Data from the most

frequent *CFTR* genotypes inframe/inframe (F508del[2]), inframe/nonsense mutations (F508del/R553X, F508del/G542X, F508del/Q524, F508del/E553), inframe/frameshift (mainly F508del/3905insT), non-F508del/frameshift, (mainly non-F508del/3905insT) and inframe/splicesite genotypes were incorporated as fixed effects with "age at time of annual test" as covariate, and the patient-specific intercept as a random effect. The remaining miscellaneous genotypes were excluded from the model. For all five subgroups, distribution of measurements was equally dispersed over the age range studied, and the distribution of measurements over the age range within the subgroups of genotypes is given in the additional file 1. Based on LMM analysis, Figure 2 (panel A) demonstrates that different slopes of gas exchange characteristics were found in the five genetic groups. F508del/frameshift started with the lowest PaO₂ mean values at age 6 years (72.3 ± 1.5 mmHg), and decreased to the lowest mean values at the age of 18 years (68.1 ± 1.7 mmHg), whereas F508del[2] and inframe/nonsense showed only

slightly reduced oxygenation (77.1 ± 0.67, 76.9 ± 1.4 mmHg, resp.) starting at the age of 6 years, but demonstrated the most significant deterioration over the years. Interestingly, frameshift/non_F508del and inframe/splicesite, presented with significantly milder progression ($p < 0.05$). Comparisons were significant with respect to the intercept between frame/F508del and F508del[2] ($p < 0.0001$) and inframe/nonsense ($p < 0.005$) as well as between F508del/frame and non-F508del/frame ($p = 0.013$). Otherwise, PaCO₂ (panel B) increased from 32.9 ± 0.3 mmHg (F508del[2]), 33.1 ± 0.6 mmHg (inframe/nonsense), 33.7 ± 0.7 mmHg (frameshift), up to 35.9 ± 0.3 mmHg, 37.2 ± 0.6 mmHg, 36.0 ± 0.6, respectively, where as inframe/splicesite and non_F508del/frameshift remained within the range of lower PaCO₂ ($p < 0.001$).

Association between Gas Exchange and Lung Function

LMM analyses was used to evaluate a potential interrelationship between gas exchange measurements over age and lung function, taking PaO₂ as outcome measures and



Conditional measurements splitting:
 F508del[2]: n=889 (62.3%) from N=103; inframe/nonsense: n=201 (14.1%) from N=22; F508del/frameshift: n=177 (12.4%) from N=19;
 non_F508del/frameshift: n=99 (6.8%) from N=12; inframe/splicesite: n=59 (4.1%) from N=7 patients

Figure 2

Progression with age based on measurements of A) PaO₂ and B) PaCO₂ within the 5 genetic subgroups (miscellaneous excluded), obtained by linear mixed model LMM analysis. Patient numbers are given by N, measurement numbers by n. Data distribution over age was equal for each genetic subgroup.

FRC_{pleth}, LCI, V_{TC}, sR_{eff}, FEV₁, FEF₅₀, BMI as explanatory variables, adjusted by the "year at testing" as covariate. Table 2 shows that PaO₂ was significantly associated with FRC_{pleth} (*t*-statistics -5.575; *p* < 0.0001), FEV₁ (*t*-statistics 3.451; *p* = 0.001), FEF₅₀ (*t*-statistics 3.158; *p* = 0.002), and LCI (*t*-statistics -3.156; *p* = 0.002), but not with V_{TC}, sR_{eff}, or BMI.

We evaluated the **early onset of abnormal lung** function in relation to oxygenation. For that purpose mean values of lung function data were computed for the age range of 5 to 8 years for each patient. 120 CF patients, who had a mean of at least 2 measurements of all lung function parameters, were eligible. Hypoxemia at rest was defined as a PaO₂ < 80 mmHg as described by Lamarre et al. [35]. Using a two-test analysis by z-score, comparisons of PaO₂ with chi-square statistics (cross tabulation) demonstrated that the best association was found for FRC_{pleth} (*Chi*-square: 21.288; *p* < 0.0001), followed by FEF₅₀ (*Chi*-square: 15.579; *p* < 0.0001), sR_{eff} (*Chi*-square: 11.894; *p* = 0.001), FEV₁ (*Chi*-square: 10.33; *p* = 0.001), and LCI (*Chi*-square: 9.644; *p* = 0.002). V_{TC} was not significantly associated. The association between oxygenation and pulmonary hyperinflation is presented in Figure 3 (panel A). In 39.2 % of patients hypoxemia (PaO₂ < 80 mmHg) was associated with pulmonary hyperinflation (FRC_{pleth} > 2SDS; dashed area). A further 36.7 % of patients presented with hypoxemia without pulmonary hyperinflation. As FEV₁ is still considered to be one of the best predictors of progression in CF, we investigated whether a differentiation between normoxemia and hypoxemia can be correlated with this spirometric function parameter.

Figure 3, panel B demonstrates that 40.0 % of patients presented with a normal FEV₁, while hypoxemia was already present (dashed area). It is noteworthy that these patients already had a significant deficit in oxygenation as shown by the PaO₂, while FEV₁ remained within normal limits,

Under the condition of normocarbia, PaCO₂ was mainly correlated with FEV₁ (*p* < 0.0001), and like PaO_{2, less} with V_{TC} (*p* = 0.004) and sR_{eff} (*p* = 0.003). In contrast, if hypocarbia was detected, a significant association of PaCO₂ with FEV₁ (*p* < 0.0001) and FEF₅₀ (*p* < 0.0001) could be found, as well as with BMI (*p* = 0.011) and FRC_{pleth} (*p* = 0.013). In Figure 4 stratification of measurements was performed for normocarbia *versus* hypocarbia, divided into those with normal *versus* abnormal FEV₁ in relation to oxygenation. The question arose whether or not patients presenting with hypocarbia have an advantage with respect to oxygenation. It could be shown, that oxygenation was improved under the condition of hypocarbia, especially if forced expiratory volume was normal (*p* < 0.0001).

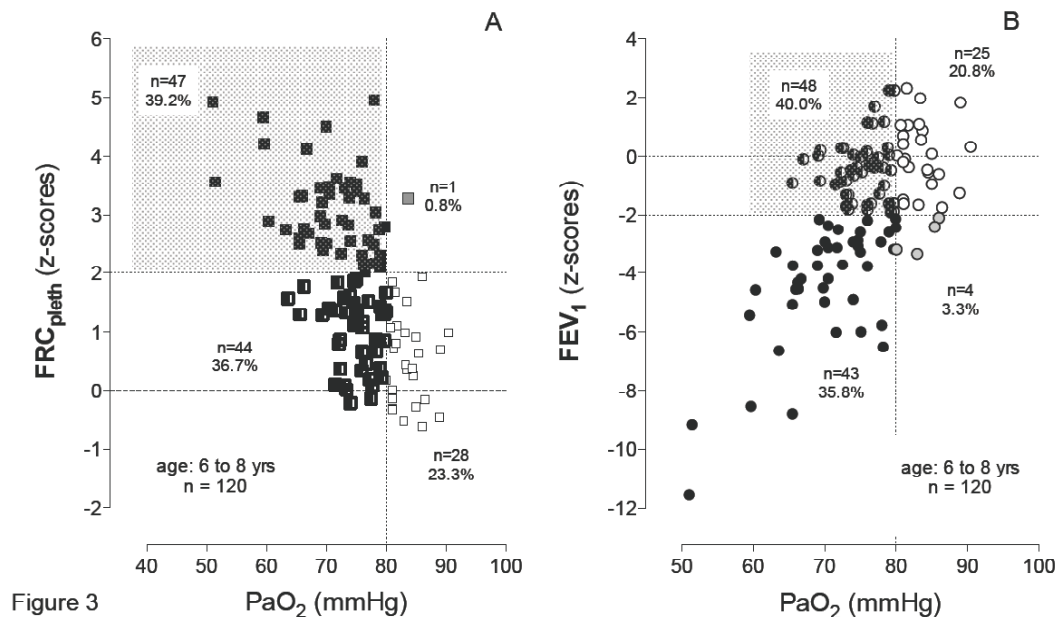
Discussion

The present observational study illustrates the complexity of gas exchange in children with cystic fibrosis, especially with reference to the age-related changes in oxygenation. The age-related deterioration of oxygenation has not yet been well described, presumably due to the fact that gas exchange characteristics are not routinely evaluated over a period of a substantial number of years. Our study, performed in a representative number of cases and followed-up over a consistent number of years demonstrates that

Table 2: Univariate and multivariate linear mixed model (LMM) analysis evaluating lung function parameters as explanatory variables of PaO₂, including adjustment by "year at testing"

LMM univariate analysis adjusted for age and test year			
	Coefficient	95 % CI	p
FRC _{pleth} (SDS)	-1.641	-1.907 to -1.376	< 0.0001
LCI (SDS)	-0.338	-0.403 to -0.272	< 0.0001
V _{TC} (SDS)	-1.209	-1.471 to -0.947	< 0.0001
sR _{eff} (SDS)	-0.517	-0.599 to -0.434	< 0.0001
FEV ₁ (SDS)	1.126	0.991 to 1.261	< 0.0001
FEF ₅₀ (SDS)	0.586	0.507 to 0.664	< 0.0001
BMI (SDS)	1.374	0.922 to 1.825	< 0.0001
LMM multivariate analysis with backward elimination procedure*			
	Coefficient	95 % CI	p
FRC _{pleth} (SDS)	-0.868	-1.180 to -0.5555	< 0.0001
LCI (SDS)	-0.125	-0.191 to -0.058	< 0.0001
sR _{eff} (SDS)	-0.123	-0.225 to -0.021	0.019
FEV ₁ (SDS)	0.511	0.284 to 0.738	< 0.0001
FEF ₅₀ (SDS)	0.161	0.0412 to 0.281	0.008

* V_{TC} and BMI excluded from model

**Figure 3**

Crosstab comparison of initial z-scores (mean during age range of 5 to 8 years) between A), PaO₂ and FRC_{pleth} presenting pulmonary hyperinflation in association with hypoxemia and B) PaO₂ and FEV₁, to present the portion of normal FEV₁ measurements while already hypoxemic, obtained in 120 CF patients.

oxygenation is specifically influenced by different lung function deficits and CF genotypes. There are several major findings of this study: First, (i) a linear decline in oxygenation could be demonstrated over the age range 5 to 18 years, which was closely and independently related to the degree of pulmonary hyperinflation (FRC_{pleth}), the degree of flow and volume limitation (FEV₁, FEF₅₀), and ventilation inhomogeneities (LCI). Secondly, (ii) as reported for several lung function parameters [1,2], the decline in PaO₂ is representative of an overall deterioration of lung disease, reflecting that factors such as the degree of pulmonary hyperinflation, ventilation inhomogeneities and impeded airway function are involved in the long-term course of gas exchange characteristics. Most importantly, however, (iii) in more than half the patients with hypoxemia, FEV₁ was within the range of normal values, and hence with functional deficits not detectable by spirometric lung function testing alone. Furthermore, (iv) an association could be found between oxygenation and the genotype. The so called "Swiss-Type" (3905insT/F508del), presented with the worst PaO₂ values already detectable at the age of 5 years and the subgroup R553X/F508del showed the worst deterioration (steepest slope) over the age range studied. Interestingly, some special subgroups of genotypes (inframe/splicesite, 3905insT/non-F508del) showed only discrete changes in gas exchange over the years. It follows that PaO₂ may serve as a sensitive marker of lung function deterioration in CF.

The present study demonstrates that the preservation of airway function and hence an intact static recoil of the lungs over years is essential, as has been shown by Zapletal [44]. It was reported by Hart et al. that if FEV₁ declines in children and young adults with CF, there is an increase in the elastic load and work of breathing, resulting in a rapid shallow breathing pattern, that is associated with further impairment of gas exchange [28]. Pulmonary hyperinflation and ventilation inhomogeneities are further pathophysiologic characteristics, which have to be taken into consideration regarding progression in CF, as reported previously by our group [1,2].

Limitations of this Study

A detailed discussion about blood gas measurements in children, the stratification into genetic subgroups, limitations in the interpretation of extensive lung function tests and the different options for statistical modeling are given in the additional file 1. An important limitation of this type of data resides in the ability to obtain repeated measurements of lung function annually over a substantial period of time. Noteworthy therefore, we were able to obtain serial annual measurements over a 10-year period in 62 % of the patients. Although the technique of blood gas measurements from the arterialized earlobe is well established and routinely used in several laboratories [26,27,32-34], in the following some technical aspects have to be mentioned. Finally, limitation of collected

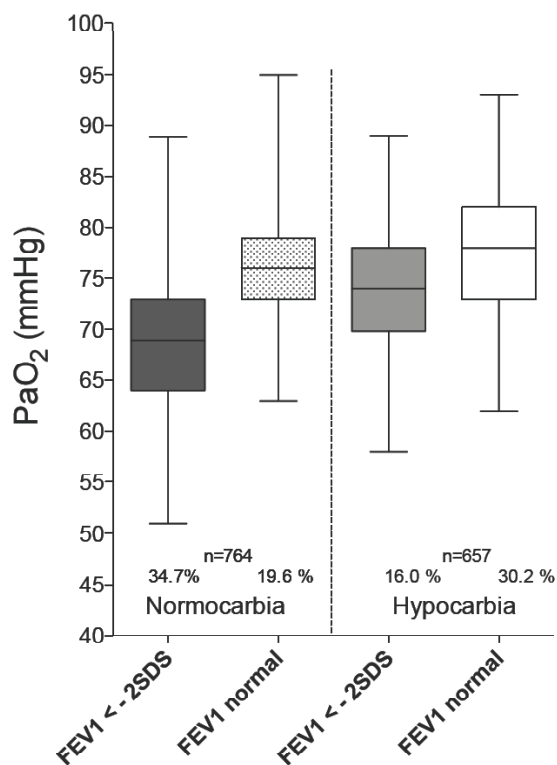


Figure 4
Crosstab comparison of initial z-scores of FEV₁ (mean during age range of 5 to 8 years) and oxygenation under 4 different conditions: (i) decreased airway patency (FEV₁ < -2SDS) and normocarbia (PaCO₂ >= 34 mmHg), (ii) normal airway patency and normocarbia, (iii) decreased airway patency and hypocarbica, and (iv) normal airway patency and hypocarbica.

functional data over a wide range of years may include confounders related to changes in the technical set-up. As proposed by Soni et al [16], we assessed the influence of these potential confounders by 3 characteristics such as "year at birth", "year at diagnosis" and the "year at testing". The "year at test" proved to be the principal confounder influencing the course of PaO₂. Most important finally, the variances of lung function over age are specific for each lung function parameter. Therefore, values of lung function data have to be expressed by z-scores, calculated from age- and gender-specific equations for value prediction for each lung function parameter, and in particular also for each lung function device as previously presented [1,2].

Blood gas measurements in children

Currently direct arterial catheterization of the radial artery is the widely accepted gold standard technique for obtaining the most accurate assessment of pulmonary gas exchange, especially in adult medicine. However, this technique is painful and not suitable for use in children

for long-term evaluation. Alternative non-invasive methods have been proposed such as pulse oxymetry, which is used to assess arterial oxyhemoglobin saturation. However, obtained values correlated poorly with arterial PaO₂ values [33]. Pulse oxymetry is a poor predictor of PaO₂ because of the sigmoidal shape of the oxyhemoglobin dissociation curve and because the curve can be shifted under various clinical and physiological conditions. Therefore, capillary arterialized blood gas analysis is a very convenient technique especially suitable for children and for repeated measurements. Comparisons between earlobe capillary PaO₂ and radial arterial PaO₂ were performed by Godfrey et al. [26] and Gaultier et al. [27]. The former author group compared earlobe and arterial values in 8 adult subjects (age range of 26 to 63 years) at rest and on exercise, showing that the mean difference between arterial and earlobe samples for PaO₂ at rest was 2.09 ± 2.48 mmHg and for PaCO₂ 0.65 ± 1.2 . Gaultier et al. [27] studied these differences in 70 infants or children suffering from cardiac or pulmonary disease and demonstrated significant differences in PaO₂ of 1.86 ± 0.60 mmHg only in children younger than 8 years. It was concluded that sampling blood from the earlobe is appropriate as a substitute for arterial PaO₂, provided certain methodological conditions such as sampling site and optimal vasodilatation are fulfilled. In a study examining PaO₂ measurements over a long period of time, it would be preferable to validate the results periodically using arterial samples. It is, however, difficult to justify arterial blood sampling in a collective of CF children with no or only minor pulmonary function impairments. In a meta-analysis performed by Zavorsky et al. [34], it was shown that capillary blood gases accurately reflect arterial blood samples and that sampling blood from the earlobe is appropriate as an alternative to arterial PaO₂. However, the discrepancy between capillary and arterial PaO₂ increased with increasing PaO₂. Reproducibility of earlobe blood gas measurements was assessed by Godfrey et al. [26] and Gaultier et al. [27].

Oxygenation and Lung Function

There is only limited knowledge about the relationship between oxygenation and factors such as the degree of pulmonary hyperinflation, ventilation inhomogeneities and/or airway function under resting conditions in CF. Moreover, hypocarbica in CF is poorly described in the literature and the correlation of gas exchange characteristics with lung function is unknown. There is only one report in which the association between hypocarbica and hypercapnia and the matching of ventilation has been studied in dogs [45]. The present report focuses on the decline of oxygenation in CF. As demonstrated in Table 2, oxygenation is significantly associated with the degree of flow limitation given by the FEV₁. This finding is in line with Hirsch et al., who could demonstrate a higher ventilatory equivalent in CF patients in comparison with control sub-

jects, suggesting increased work of breathing due to airflow obstruction and dead space ventilation. Ventilation appears mechanically inefficient but necessary to keep arterial PaCO₂ from rising and oxygen saturation from falling at rest [46]. Moreover, Hart et al. showed that in children and young adults with advanced stable pulmonary CF disease, falling FEV₁ induced an increase in the respiratory muscle load, predominately by a decrease in lung compliance (C_{L,dyn}) rather than an increase in total lung resistance (R_T). Other physiologic studies have demonstrated an increase in tidal volume (V_T) with a reduction in respiratory rate (RR) in association with impairment of gas exchange [28]. The present study indicates that oxygenation at rest is significantly associated with LCI and with FRC_{pleth} and reduced forced expiratory volume (FEV₁) as an indirect parameter of airflow limitation.

Genotype Association with Gas Exchange Characteristics

To date, a relationship between *CFTR* genotypes and severity of pulmonary disease has proven difficult to determine [47]. The present study, however, clearly demonstrates an association between gas exchange characteristics (especially oxygenation) and genotypes. These findings are in line with previous work obtained in infants [13] and children [1,2] with CF. Schaedel et al. used FEV₁ in terms of % predicted of normal, to demonstrate a slower rate of decline in patients with missense mutations compared with F508del homozygotes [14]. Since these patients generally had a sufficient level of pancreatic function, it was concluded that *CFTR* genotypes associated with long-term pancreatic sufficiency have more benign lung disease and better pulmonary function [12,14]. With the exception of one patient with a missense mutation, all patients in our study collective presented with pancreatic insufficiency, requiring continuous supplementation with pancreatic enzymes and high caloric nutritional support. The major new finding in the present study is an allocation of specific genotypes to (i) sufficient oxygenation combined with low PaCO₂ levels, and (ii) insufficient oxygenation combined with normocarbia, reflecting different phenotypes of disease progression. Inframe/splice-site and non-F508del/frameshift mutations seem to have a significant better gas exchange pattern than the other groups. The different progression between F508del/frameshift and non-F508del/frameshift is especially striking. Based on recent findings [48] showing complete lack of *CFTR* protein at the apical membrane in F508del/3905insT compound heterozygous patients, we hypothesize that there may be an interaction between the plasma membrane resulting in a more severe phenotype. However, further experiments are needed to elucidate the fate of the 3905insT protein in the cell after its biosynthesis.

In conclusion, the linear decline of PaO₂ over the years was closely associated with the degree of pulmonary hyperinflation, ventilation inhomogeneities, and parameters of airway function on the one hand and with genotypes on the other hand. We found that gas exchange characteristics (PaO₂, PaCO₂) are very sensitive parameters of deterioration in CF lung disease. Since the assessment of factors influencing the overall estimate of gas exchange is of major interest to understand functional deficits influencing progression not only in quantitative, but also in qualitative terms, classification into certain functional risk groups may have implications for therapeutic intervention. However, further studies are needed to demonstrate whether changes in PaCO₂ in relation to PaO₂ are potential predictors of exacerbation or of the long-term clinical outcome. We keep in mind, that the ability of blood gas measurements to serve as outcome measures in interventional studies largely depends from the knowledge to what extent changes recorded during a short-term study will be out of the variability of the measurement changes established by the present long term approach over years.

Abbreviations

BMI: body mass index; BTPS: body temperature and pressure saturated; CF: Cystic Fibrosis; *CFTR*: Cystic Fibrosis Transmembrane conductance Regulator; DNA: Deoxyribonucleic Acid; FEV₁: Forced Expiratory Volume in One second; FEF₅₀: Forced expiratory flow at 50 percent FVC; FRC_{pleth}: Functional residual capacity (plethysmographically determined); FRC_{MBNW}: Functional residual capacity (determined by MBNW); FVC: Forced Vital Capacity; LCI: Lung clearance index; LMM: Linear mixed model; MBNW: Multibreath nitrogen washout; PaCO₂: partial carbon monoxide pressure; PaO₂: partial oxygen pressure; PA: *Pseudomonas aeruginosa*; ROC: Receiver-operated curve; SDS: Standard deviation score obtained by z-transformation; SEM: Standard error of the mean; sR_{eff}: specific effective airway resistance; SSCP/HD: single strand confirmation polymorphism/heteroduplex; TLC: Total Lung Capacity; V_{TC}: volume of trapped gas.

Competing interests

The authors declare that they have no competing interests.

Authors' contributions

All authors have read and approved the final manuscript. RK designed, coordinated, conceived the study and wrote all chapters; PhL took part in the interpretation of data and manuscript revision; IP participated in the data collection, and manuscript revision; PB was our consultant for statistical evaluation; SG performed the CF mutation screening, took part in the interpretation of data (espe-

cially genetics) and revising; and UF took part in the interpretation of data and revised the draft.

Additional material

Additional file 1

Indentation of methods and data base management. Details of methods used, robustness of the data base, limits of methods and options of statistical modelling.

Click here for file

[<http://www.biomedcentral.com/content/supplementary/1465-9921-10-106-S1.doc>]

Acknowledgements

The study was supported by grants of the Swiss National Research Foundation (SNF 32-040681.94_SG, SNF 32-040562.95_RK, 32-055697.98_SG, 32-066767.02_SG, and SNF 32-112652.06_SG) as well as the Foundation Telethon Action Switzerland. The authors are indebted to Prof. Martin H. Schöni, M.D., Dr. Anna Rüdeberg, M.D., Dr. Carmen Casaulta-Aebischer, M.D., and the entire nursing staff of the Bernese Cystic Fibrosis Clinic for their contribution in the registration of the clinical data and in obtaining the samples for genotype analysis. The authors also thank Ms. Gisela Wirz for performing the lung function tests and taking care of the data base, as well as Dr. Jane McDougall for reviewing the manuscript.

References

- Kraemer R, Blum A, Schibler A, Ammann RA, Gallati S: **Ventilation inhomogeneities in relation to standard lung function in patients with cystic fibrosis.** *Am J Respir Crit Care Med* 2005, **171**:371-378.
- Kraemer R, Baldwin DN, Ammann RA, Frey U, Gallati S: **Progression of pulmonary hyperinflation and trapped gas associated with genetic and environmental factors in children with cystic fibrosis.** *Respir Res* 2006, **7**:138.
- Gustafsson PM, Aurora P, Lindblad A: **Evaluation of ventilation maldistribution as an early indicator of lung disease in children with cystic fibrosis.** *Eur Respir J* 2003, **22**:972-979.
- Ranganathan SC, Stocks J, Dezateux C, Bush A, Wade A, Carr S, Castle R, Dinwiddie R, Hoo AF, Lum S, et al.: **The evolution of airway function in early childhood following clinical diagnosis of cystic fibrosis.** *Am J Respir Crit Care Med* 2004, **169**:928-933.
- Aurora P, Bush A, Gustafsson P, Oliver C, Wallis C, Price J, Stroobant J, Carr S, Stocks J: **Multiple-breath washout as a marker of lung disease in preschool children with cystic fibrosis.** *Am J Respir Crit Care Med* 2005, **171**:249-256.
- Gustafsson PM: **Peripheral airway involvement in CF and asthma compared by inert gas washout.** *Pediatr Pulmonol* 2007, **42**:168-176.
- Beardmore CS: **Lung function from infancy to school age in cystic fibrosis.** *Arch Dis Child* 1995, **73**:519-523.
- Kraemer R, Schöni MH: **Ventilatory inequalities, pulmonary function and blood oxygenation in advanced states of cystic fibrosis.** *Respiration* 1990, **57**:318-324.
- Gustafsson PM, Johansson HJ, Dahlback GO: **Pneumotachographic nitrogen washout method for measurement of the volume of trapped gas in the lungs.** *Pediatr Pulmonol* 1994, **17**:258-268.
- Lum S, Gustafsson P, Ljungberg H, Hulskamp G, Bush A, Carr SB, Castle R, Hoo AF, Price J, Ranganathan S, et al.: **Early detection of cystic fibrosis lung disease: multiple-breath washout versus raised volume tests.** *Thorax* 2007, **62**:341-347.
- Ranganathan SC, Dezateux C, Bush A, Carr SB, Castle RA, Madge S, Price J, Stroobant J, Wade A, Wallis C, Stocks J: **Airway function in infants newly diagnosed with cystic fibrosis.** *Lancet* 2001, **358**:1964-1965.
- Corey M, Edwards L, Levison H, Knowles M: **Longitudinal analysis of pulmonary function decline in patients with cystic fibrosis.** *J Pediatr* 1997, **131**:809-814.
- Kraemer R, Birrer P, Liechti-Gallati S: **Genotype-phenotype association in infants with cystic fibrosis at the time of diagnosis.** *Pediatr Res* 1998, **44**:920-926.
- Schaedel C, de Monestrol I, Hjelte L, Johannesson M, Kornfalt R, Lindblad A, Strandvik B, Wahlgren L, Holmberg L: **Predictors of deterioration of lung function in cystic fibrosis.** *Pediatr Pulmonol* 2002, **33**:483-491.
- Wagener JS, Taussig JM, Burrows B, Hernried L, Boat T: **Comparison of lung function and survival patterns between cystic fibrosis and emphysema of chronic bronchitis patients.** In *Perspectives in Cystic Fibrosis* Edited by: Sturgess JM. Mississauga, Ontario: Imperial Press; 1980. 236-245-236-240
- Soni R, Dobbin CJ, Milross MA, Young IH, Bye PP: **Gas exchange in stable patients with moderate-to-severe lung disease from cystic fibrosis.** *J Cyst Fibros* 2008, **7**:285-291.
- Warwick WJ, Pogue RE, Gerber HU, Nesbitt CJ: **Survival patterns in cystic fibrosis.** *J Chronic Dis* 1975, **28**:609-622.
- Rosenstein BJ, Cutting GR: **The diagnosis of cystic fibrosis: a consensus statement. Cystic Fibrosis Foundation Consensus Panel.** *J Pediatr* 1998, **132**:589-595.
- Liechti-Gallati S, Schneider V, Neeser D, Kraemer R: **Two buffer PAGE system-based SSCP/HD analysis: a general protocol for rapid and sensitive mutation screening in cystic fibrosis and any other human genetic disease.** *Eur J Hum Genet* 1999, **7**:590-598.
- Bennett LC, Kraemer R, Liechti-Gallati S: **Buccal cell DNA analysis in premature and term neonates: screening for mutations of the complete coding region for the cystic fibrosis transmembrane conductance regulator.** *Eur J Pediatr* 2000, **159**:99-102.
- Kraemer R, Delosea N, Ballinari P, Gallati S, Cramer R: **Effect of allergic bronchopulmonary aspergillosis on lung function in children with cystic fibrosis.** *Am J Respir Crit Care Med* 2006, **174**:1211-1220.
- Kraemer R, Meister B: **Fast real-time moment-ratio analysis of multibreath nitrogen washout in children.** *Journal of applied physiology: respiratory, environmental and exercise physiology* 1985, **59**:1137-1144.
- Kraemer R, Zehnder M, Meister B: **Intrapulmonary gas distribution in healthy children.** *Respir Physiol* 1986, **65**:127-137.
- Zapellet A, Samanek M, Paul T: *Lung function in children and adolescents Bapel (Switzerland)*: Karger; 1987.
- Manzke H, Stadlober E, Schellauf HP: **Combined body plethysmographic, spirometric and flow volume reference values for male and female children aged 6 to 16 years obtained from "hospital normals".** *Eur J Pediatr* 2001, **160**:300-306.
- Godfrey S, Wozniak ER, Courtenay Evans RJ, Samuels CS: **Ear lobe blood samples for blood gas analysis at rest and during exercise.** *Br J Dis Chest* 1971, **65**:58-64.
- Gaultier C, Boule M, Allaire Y, Clement A, Buvry A, Girard F: **Determination of capillary oxygen tension in infants and children: assessment of methodology and normal values during growth.** *Bull Eur Physiopathol Respir* 1979, **14**:287-297.
- Hart N, Polkey MI, Clement A, Boule M, Moxham J, Lofaso F, Fauroux B: **Changes in pulmonary mechanics with increasing disease severity in children and young adults with cystic fibrosis.** *Am J Respir Crit Care Med* 2002, **166**:61-66.
- Hart N, Tounian P, Clement A, Boule M, Polkey MI, Lofaso F, Fauroux B: **Nutritional status is an important predictor of diaphragm strength in young patients with cystic fibrosis.** *Am J Clin Nutr* 2004, **80**:1201-1206.
- Fauroux B, Nicot F, Essouri S, Hart N, Clement A, Polkey MI, Lofaso F: **Setting of noninvasive pressure support in young patients with cystic fibrosis.** *Eur Respir J* 2004, **24**:624-630.
- Fauroux B: **Noninvasive ventilation in cystic fibrosis.** In *Cystic Fibrosis Volume 35*. Edited by: Webb AK, Ratjen FA. Wakefield, UK: European Respiratory Society; Eur Respir Mon; 2006:127-138.
- MacIntyre J, Norman JN, Smith G: **Use of capillary blood in measurement of arterial PO₂.** *Br Med J* 1968, **3**:640-643.
- Pitkin AD, Roberts CM, Wedzicha JA: **Arterialised earlobe blood gas analysis: an underused technique.** *Thorax* 1994, **49**:364-366.
- Zavorsky GS, Cao J, Mayo NE, Gabbay R, Murias JM: **Arterial versus capillary blood gases: a meta-analysis.** *Respir Physiol Neurobiol* 2007, **155**:268-279.

35. Lamarre A, Reilly BJ, Bryan AC, Levison H: **Early detection of pulmonary function abnormalities in cystic fibrosis.** *Pediatrics* 1972, **50**:291-298.
36. Stokes DC, Wohl ME, Khaw KT, Strieder DJ: **Postural hypoxemia in cystic fibrosis.** *Chest* 1985, **87**:785-789.
37. Wolf B, Gaultier C, Lopez C, Boule M, Girard F: **Hypoxemia in attack free asthmatic children: relationship with lung volumes and lung mechanics.** *Bull Eur Physiopathol Respir* 1983, **19**:471-476.
38. Prader A, Largo R, Molinari L, Issler C: **Physical growth of Swiss children from birth to 20 years of age.** *Helv Paediatr Acta* 1989, **52**:1-125.
39. Cole TJ, Freeman JV, Preece MA: **British 1990 growth reference centiles for weight, height, body mass index and head circumference fitted by maximum penalized likelihood.** *Stat Med* 1998, **17**:407-429.
40. Steiner B, Truninger K, Sanz J, Schaller A, Gallati S: **The role of common single-nucleotide polymorphisms on exon 9 and exon 12 skipping in nonmutated CFTR alleles.** *Hum Mutat* 2004, **24**:120-129.
41. Laird NM, Donnelly C, Ware JH: **Longitudinal studies with continuous responses.** *Stat Methods Med Res* 1992, **1**:225-247.
42. Brown H, Prescott R: *Applied Mixed Models in Medicine* 2nd edition. Chichester, West Sussex, England: John Wiley & Sons Ltd; 2006.
43. Norusis MJ: *SPSS Statistics 17.0 Advanced Statistical Procedures Companion* Prentice Hall Inc.; New York; 2008.
44. Zapletal A, Desmond KJ, Demizio D, Coates AL: **Lung recoil and the determination of airflow limitation in cystic fibrosis and asthma.** *Pediatr Pulmonol* 1993, **15**:13-18.
45. Domino KB, Swenson ER, Hlastala MP: **Hypocapnia-induced ventilation/perfusion mismatch: a direct CO₂ or pH-mediated effect?** *Am J Respir Crit Care Med* 1995, **152**:1534-1539.
46. Hirsch JA, Zhang SP, Rudnick MP, Cerny FJ, Cropp GJ: **Resting oxygen consumption and ventilation in cystic fibrosis.** *Pediatr Pulmonol* 1989, **6**:19-26.
47. Kerem E, Corey M, Kerem BS, Rommens J, Markiewicz D, Levison H, Tsui LC, Durie P: **The relation between genotype and phenotype in cystic fibrosis-analysis of the most common mutation (delta F508).** *N Engl J Med* 1990, **323**:1517-1522.
48. Sanz J, von Kanel T, Schneider M, Steiner B, Schaller A, Gallati S: **The CFTR frameshift mutation 3905insT and its effect at transcript and protein level.** *Eur J Hum Genet* 2009.

Publish with **BioMed Central** and every scientist can read your work free of charge

"BioMed Central will be the most significant development for disseminating the results of biomedical research in our lifetime."

Sir Paul Nurse, Cancer Research UK

Your research papers will be:

- available free of charge to the entire biomedical community
- peer reviewed and published immediately upon acceptance
- cited in PubMed and archived on PubMed Central
- yours — you keep the copyright

Submit your manuscript here:
http://www.biomedcentral.com/info/publishing_adv.asp

