

Review

Open Access

Granulocyte-colony stimulating factor for stroke treatment: mechanisms of action and efficacy in preclinical studies

Jens Minnerup*¹, Sevgi Sevimli¹ and Wolf-Rüdiger Schäbitz²

Address: ¹Department of Neurology, University of Münster, Albert-Schweitzer-Straße 33, 48149 Münster, Germany and ²Department of Neurology, University of Münster and Evangelisches Krankenhaus Bielefeld, Burgsteig 13, 33617 Bielefeld, Germany

Email: Jens Minnerup* - minnerup@uni-muenster.de; Sevgi Sevimli - sevimlis@uni-muenster.de; Wolf-Rüdiger Schäbitz - Wolf.Schaebitz@evkb.de

* Corresponding author

Published: 21 October 2009

Received: 4 June 2009

Experimental & Translational Stroke Medicine 2009, 1:2 doi:10.1186/2040-7378-1-2

Accepted: 21 October 2009

This article is available from: <http://www.etsmjournal.com/content/1/1/2>

© 2009 Minnerup et al; licensee BioMed Central Ltd.

This is an Open Access article distributed under the terms of the Creative Commons Attribution License (<http://creativecommons.org/licenses/by/2.0>), which permits unrestricted use, distribution, and reproduction in any medium, provided the original work is properly cited.

Abstract

G-CSF is widely employed for the treatment of chemotherapy-induced neutropenia. Recently, neuroprotective effects of G-CSF in animal stroke models were discovered including infarct size reduction and enhancement of functional recovery. The underlying mechanisms of action of G-CSF in ischemia appear to be a direct anti-apoptotic activity in neurons and a neurogenesis inducing capacity. Additional effects may be based on the stimulation of new blood-vessel formation, the stimulation of immunocompetence and -modulation as well as on bone marrow mobilization. In addition to a discussion of these mechanisms, we will review the available preclinical studies and analyze their impact on the overall efficacy of G-CSF in experimental stroke.

Introduction

Granulocyte-colony-stimulating factor (G-CSF) was identified among a set of humoral factors on which the survival, proliferation, and differentiation of hematopoietic cells in cell culture assays is dependent [1,2]. After purification of the murine G-CSF more than 25 years ago its human analogue was discovered [1]. The complete species cross-reactivity [3] of the human and the murine G-CSF molecule exhibits a strong evolutionary conservation and emphasizes its importance for white blood cell regulation. A decade after its identification, G-CSF was approved by the FDA for prevention and treatment of chemotherapy-induced neutropenia and apheresis for hematopoietic transplantation [4,5]. Much interest focused on the use of G-CSF as a neuroprotective candidate when its infarct size reducing capabilities in animal stroke models were discovered in the year 2003 [6-8]. Beyond its initially as key protective mechanism assumed capability to mobilize bone marrow stem cells, a deeper understanding of G-

CSF's action in stroke pathophysiology has been developed. This review focuses on the neuroprotective and neuroregenerative properties of G-CSF in animal models of focal cerebral ischemia. In addition, the evidence and efficacy from preclinical studies as the basis for current clinical trials is reviewed.

Mechanisms of action of G-CSF in ischemic injury

Mobilization of stem cells

G-CSF's natural function of mobilizing stem cells from the bone marrow triggered initial explorations of its potential usefulness in stroke with the idea that mobilized stem cells may home into the injured brain [9]. A series of preclinical investigations in animals using G-CSF for the therapy of ischemic stroke was initiated to answer the question whether mobilized bone marrow cells contribute to improved outcome [9-11]. The capacity of bone-marrow derived cells to restore function in the injured brain has indeed been demonstrated (for review see [12]),

but the mechanism of their advantageous action remains unclear. The proposed transdifferentiation of bone marrow derived cells into neural cells that induce functional and structural recovery poststroke was recently doubted by several studies (e.g. [13,14]). The assumption that G-CSF mobilized bone marrow cells might have caused the observed functional improvements was also propagated by Shyu et al [11]. However, dividing cells in the ischemic hemisphere, mainly seen in the subventricular zone, were presumably originated from adult neural stem cells concordantly with results from other groups [7,10]. Kominé-Kobayashi and colleagues [15] subjected chimeric mice with EGFP-expressing bone marrow-derived cells to transient occlusion of the middle cerebral artery. The authors report that indeed migration of bone-marrow derived monocytes was not increased at all after G-CSF treatment, but rather decreased. So far not evidence proven is another bone marrow cell mediated mechanism. G-CSF may induce invasion of bone-marrow-derived stem cells into the infarcted brain which could contribute to enhanced neuro- and angiogenesis by secretion of neurotrophins and other trophic factors [12]. In conclusion the recent evidence from animal experiments cast doubt on the perception that mobilization of stem cells is the sole or even most important mechanism of action for functional recovery after G-CSF treatment.

Anti-apoptotic activity

A first indication of a potential direct effect on cells of the brain came from the observation that G-CSF had a direct protective effect in cultured neurons against glutamate-induced cell death [6]. After cerebral ischemia, endogenously released G-CSF is presumably active on the upregulated G-CSF receptor in periischemic regions at risk, the so called penumbra, and may provide protection against apoptotic cell death in neurons (figure 1). Schneider showed that after interaction with its receptor, G-CSF activates through JAK signalling, three independent anti-apoptotic pathways: The signal transducer and activation of transcription (STAT)-3, the extracellular-signal-regulated kinase (ERK) and the phosphatidylinositol 3-kinase (PI3K)-Akt pathway [7]. Kominé-Kobayashi also found antiapoptotic effects of G-CSF on neurons after cerebral ischemia through the JAK/STAT signaling pathway and subsequent activation of Bcl-2 [15]. Moreover, G-CSF increased cIAP2 levels in the ischemic cortex and thereby decreased the activation of caspase 3, an important trigger of apoptotic processes [16]. In a rat model of intracerebral hemorrhage G-CSF's antiapoptotic activity in cells in the perihematomal area was revealed by a TUNEL assay, which detects less DNA fragments as a result from apoptotic signaling cascades after G-CSF treatment [17].

Neurogenesis

Neural progenitor cells reside for a lifetime in certain areas of the brain, particularly the subventricular zone (SVZ),

the olfactory bulb and the hippocampus. Certain conditions such as stroke induce the generation of new neurons from precursor cells, a phenomenon which may potentially be utilized to restore brain function. G-CSF's most striking effect regarding neurogenesis was seen in the dentate gyrus, where the number of newly generated neurons under ischemic conditions [7,10,11] but also in nonischemic, sham-operated animals was increased. In the striatum there was only a trend toward an enhanced neurogenesis after G-CSF treatment which was not statistically significant and the number of newly generated cells was rather small [7]. This finding is not surprising, since the striatum is known to harbor only a low number of neuronal precursors [18,19]. Generation of new differentiated cells from endogenous stem cells is an intricate interplay among different components such as proliferation, differentiation, and selective survival. In vivo experiments revealed that G-CSF promotes neurogenesis in all of these components. The number of newly generated cells was increased, the cells differentiate towards a neuronal fate and anti-apoptotic pathways are activated [7]. The in vivo findings of an increased neurogenesis after G-CSF treatment were confirmed by in vitro experiments. It was shown that adult neural stem cells isolated from the rat SVZ or hippocampal region that grow as neurospheres in culture express the G-CSF receptor [7,20]. G-CSF dose-dependently induced maturation of cultured progenitor cells towards a neuronal phenotype and increased the population of the differentiated cells [7].

Angiogenesis

Angiogenesis is a process where new vessels arise from pre-existing ones [21]. Future treatment strategies in stroke focus on optimisation of this process in the ischemic boundary zone [22]. However, the contribution of angiogenesis to functional recovery after stroke is still unclear [23-25]. Lee and colleagues showed that G-CSF enhanced angiogenesis in a rat stroke model measured by endothelial cell proliferation, the vascular surface area, the number of branch points, and the vascular length [26]. The G-CSF effect was more pronounced when treatment was initiated earlier. But even when treatment was delayed up to seven days after the induction of ischemia an increased angiogenesis accompanied by an enhanced long-term functional recovery could be observed [26]. Expression of the vascular marker von Willebrand factor in BrdU positive cells after G-CSF treatment demonstrated the generation of new endothelial cells [11]. Taguchi found an accelerated angiogenesis measured by an angiographic score without an enhanced functional outcome [27]. However, the results of this study have to be interpreted with caution since immunodeficient mice were used in which G-CSF may not exert its immunomodulative properties. The immunomodulative effects are presumably important for post-stroke functional recovery, as described below.

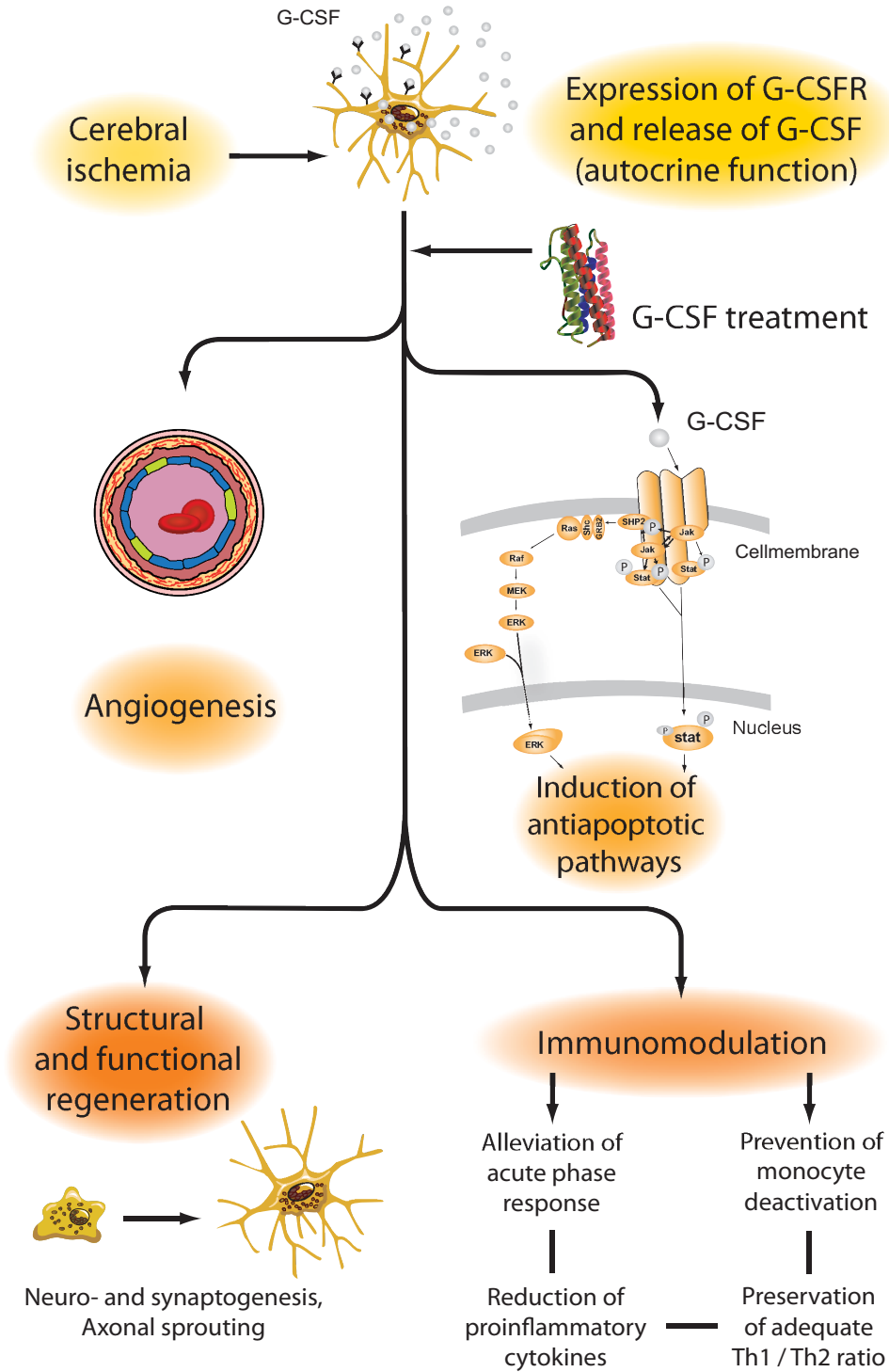


Figure 1
G-CSF reduces infarct sizes and enhances functional recovery in stroke models by several mechanisms of action, such as the induction of anti-apoptotic pathways, neurogenesis and angiogenesis. Thereby G-CSF acts as a direct protectant for neurons expressing its receptor. G-CSF's influences on immunocompetence and inflammation parameters are potential additional effects.

Immunomodulation

Recent research revealed that interactions between cerebral ischemia and the immune system are exceptionally relevant for the functional outcome of stroke patients [28]. Stroke induced immunodepression can cause infections, such as pneumonia, a frequent complication in stroke patients. However, immunodepression may potentially improve stroke outcome by alleviating the autoaggressive responses due to ischemia-induced exposure of central nervous system-specific antigens to the immune system [29-31]. Thus, immunomodulation and an increase of immunocompetence may also be responsible for the rather acute effects of G-CSF [32]. Indeed, a reduced infiltration of neutrophils and microglia in the ischemic hemisphere after G-CSF treatment was observed [15,26], whereas our group could not detect such a difference between the placebo group and the G-CSF group [6]. A further analysis of inflammatory cells in the ischemic hemisphere revealed a decreased activation of inducible nitric oxide synthase (iNOS)-positive microglia in animals treated with G-CSF [15]. As a consequence of the iNOS inhibition, a reduced nitrotyrosine production as a marker for nitrosative stress was detected in NeuN positive cells [15]. In contrast to these immunohistochemistry and western blot findings there was no G-CSF induced reduction of iNOS on the mRNA level [33]. Administration of interleukin-1 beta is known to deteriorate cerebral ischemia and an interleukin-1 beta receptor antagonist may neutralize this effect [34]. Thus, the reduction of the ischemia induced interleukin-1 beta upregulation by G-CSF may contribute to infarct size reduction [16,33]. Recently, our group showed that G-CSF suppresses MMP-9, which is known to mediate inflammation, blood-brain barrier breakdown with subsequent edema formation and tissue injury in acute stroke [35].

Efficacy of G-CSF in stroke models

G-CSF in experimental stroke and the STAIR criteria

Successful testing of a candidate stroke drug in animal models does not firmly predict efficacy in clinical studies [36]. As a result of many failed clinical stroke trials the Stroke Academic Therapy Industry Roundtable (STAIR) established recommendations for the preclinical evaluation of stroke drugs [37]. The STAIR criteria postulate that the efficacy of a new drug should be demonstrated in a variety of stroke models performed in different species and by different laboratories. Indeed, G-CSF showed efficacy in different species and different stroke models such as transient ischemia in mouse [9,15,38,39] and rat [6,7,11] as well as permanent ischemia in mouse [10,38] and rat [7,8]. Moreover, G-CSF's efficacy was investigated in animals with comorbidity, such as diabetes and hypertension, which is important, since stroke patients usually exhibit those conditions [40,41]. As recommended by the STAIR functional outcome in animal should be tested

besides measuring infarct size reduction. G-CSF demonstrated an improvement in short-term [7,15,38] and long-term [7,8,10,11,39] functional neurological deficits. Systemic parameters relevant for stroke pathophysiology such as blood pressure or oxygen saturation were not influenced by G-CSF as measured by physiological monitoring of animals subjected to stroke [6,7,15]. The overall high methodological quality of preclinical G-CSF stroke studies was corroborated by a recent systemic analysis [42]. Philip and colleagues found that animal experimental stroke studies of G-CSF had the highest quality in a STAIR guideline derived quality score compared to all other neuroprotective agents that are currently investigated in clinical phase II or III trial [42].

Meta-analysis and meta-regression analysis of G-CSF in experimental stroke

To enhance the chance of a successful transfer of preclinical data in clinical trials beyond the application of the STAIR criteria, systematic meta-analyses of candidate neuroprotectants in animal experiments were conducted [43-46]. To get an overall impression of G-CSF's efficacy in the recently published preclinical studies and for potential guidance of further clinical studies, we have performed a meta-analysis and meta-regression analysis of G-CSF in animal models of focal cerebral ischemia [47]. The meta-analysis showed that G-CSF effectively reduced both infarct volumes and sensorimotor deficits. Infarct sizes were reduced by 42%. The reduction of infarct volumes in G-CSF-treated animals was proportional to the infarct volumes of placebo-treated animals as indicated by the L'abbé plot [47]. This proportional infarct size reduction demonstrates G-CSF's efficacy in milder stroke models as well as in severe hemispheric stroke models. Sensorimotor deficits which were categorized in three subgroups (Rotarod running, neuroscore, limb function) were improved between 24% and 40%. Our meta-regression, which was the first meta-regression analysis of a neuroprotective drug in animal stroke models, identified higher doses of G-CSF to be associated with significantly smaller infarct volumes for doses between 10 and 60 µg/kg body weight (infarct size reduction 0.8% per one µg/kg body weight increase in dose when applied within the first 6 hours and 2.1% per one µg/kg body weight increase in dose when applied later than 6 hours after induction of ischemia). Time on Rotarod was significantly extended by 2.1% and 2.2% per one µg/kg body weight increase in dose for early and late treatment initiation, respectively. Also, limb function and neuroscore improved significantly when G-CSF dose was increased. This dose-response relationship is particularly important finding since conclusive experimental dose finding data deriving from a singular stroke study are currently not available. Also a critical aspect of stroke drug development is the therapeutic time window. For G-CSF effects on infarct size

the time window is at least 24 hours in the transient suture occlusion model in rodents [9,11]. Regarding functional outcome Zhao [48] reported a beneficial effect of G-CSF when administered more than three months after the onset of ischemia. Using a meta-regression technique we found that a delayed treatment was as effective as an early treatment initiation and may even lead to smaller infarct sizes [47]. This result is particularly interesting since the time window for most candidate neuroprotectants closes early after symptom onset [49]. The potential of a much longer time-window of G-CSF compared to other stroke drugs might be explained by the above mentioned multimodal actions consisting of neuroprotective and particularly proregenerative properties.

Conclusion

Hematopoietic factors as candidate drugs for stroke treatment were intensely studied in stroke models over the last years. However, efficacy of candidate neuroprotectants in animal experiments may not necessarily predict efficacy in stroke patients, particularly when the preclinical experiments are insufficient and incomplete. New candidate drugs should therefore be tested in stroke models three-fold to enhance the chance of a successful bench-to-bedside progress: 1. Meaningful interaction in stroke pathophysiology, 2. Integrity regarding fulfilled STAIR criteria, and 3. Efficacy analyzed in meta-analysis of animal studies. G-CSF, as novel candidate stroke drug, widely addresses these issues due to its multimodal mode-of-action in combination with a broad spectrum of efficacy in animal stroke models. Aside from this, G-CSF's has a comprehensive safety profile as demonstrated by its clinical use for many years.

Abbreviations

G-CSF: Granulocyte-colony stimulating factor; STAIR: Stroke Therapy Academic Industry Roundtable; EGFP: enhanced green fluorescent protein; STAT: signal transducer and activation of transcription; ERK: extracellular-signal-regulated kinase; PI3K: phosphatidylinositol 3-kinase; Bcl-2: B-cell lymphoma 2; TUNEL: terminal uridine deoxynucleotidyl transferase dUTP nick and labeling; SVZ: subventricular zone; BrdU: bromodeoxyuridine; iNOS: inducible nitric oxide synthase.

Competing interests

WRS is inventor on a patent application regarding the neuroprotective effects of G-CSF.

Authors' contributions

JM wrote the manuscript. SS wrote the manuscript. WRS supervised manuscript preparation.

References

- Burgess AW, Metcalf D: **Characterization of a serum factor stimulating the differentiation of myelomonocytic leukemic cells.** *Int J Cancer* 1980, **26**:647-654.
- Sachs L: **The molecular control of blood cell development.** *Science* 1987, **238**:1374-1379.
- Nicola NA, Begley CG, Metcalf D: **Identification of the human analogue of a regulator that induces differentiation in murine leukaemic cells.** *Nature* 1985, **314**:625-628.
- Cavallaro AM, Lilleby K, Majolino I, Storb R, Appelbaum FR, Rowley SD, Bensinger WI: **Three to six year follow-up of normal donors who received recombinant human granulocyte colony-stimulating factor.** *Bone Marrow Transplant* 2000, **25**:85-89.
- Frampton JE, Lee CR, Faulds D: **Filgrastim. A review of its pharmacological properties and therapeutic efficacy in neutropenia.** *Drugs* 1994, **48**:731-760.
- Schabitz WR, Kollmar R, Schwaninger M, Juettler E, Bardutzky J, Scholzke MN, Sommer C, Schwab S: **Neuroprotective effect of granulocyte colony-stimulating factor after focal cerebral ischemia.** *Stroke* 2003, **34**:745-751.
- Schneider A, Kruger C, Steigleder T, Weber D, Pitzer C, Laage R, Aronowski J, Maurer MH, Gassler N, Mier W, et al.: **The hematopoietic factor G-CSF is a neuronal ligand that counteracts programmed cell death and drives neurogenesis.** *J Clin Invest* 2005, **115**:2083-2098.
- Schneider A, Wysocki R, Pitzer C, Kruger C, Laage R, Schwab S, Bach A, Schabitz WR: **An extended window of opportunity for G-CSF treatment in cerebral ischemia.** *BMC Biol* 2006, **4**:36.
- Six I, Gasan G, Mura E, Bordet R: **Beneficial effect of pharmacological mobilization of bone marrow in experimental cerebral ischemia.** *Eur J Pharmacol* 2003, **458**:327-328.
- Kawada H, Takizawa S, Takanashi T, Morita Y, Fujita J, Fukuda K, Takagi S, Okano H, Ando K, Hotta T: **Administration of hematopoietic cytokines in the subacute phase after cerebral infarction is effective for functional recovery facilitating proliferation of intrinsic neural stem/progenitor cells and transition of bone marrow-derived neuronal cells.** *Circulation* 2006, **113**:701-710.
- Shyu WC, Lin SZ, Yang HI, Tzeng YS, Pang CY, Yen PS, Li H: **Functional recovery of stroke rats induced by granulocyte colony-stimulating factor-stimulated stem cells.** *Circulation* 2004, **110**:1847-1854.
- Chopp M, Li Y: **Treatment of neural injury with marrow stromal cells.** *Lancet Neurol* 2002, **1**:92-100.
- Alvarez-Dolado M, Pardal R, Garcia-Verdugo JM, Fike JR, Lee HO, Pfeffer K, Lois C, Morrison SJ, Alvarez-Buylla A: **Fusion of bone-marrow-derived cells with Purkinje neurons, cardiomyocytes and hepatocytes.** *Nature* 2003, **425**:968-973.
- Ono K, Yoshihara K, Suzuki H, Tanaka KF, Takii T, Onozaki K, Sawada M: **Preservation of hematopoietic properties in transplanted bone marrow cells in the brain.** *J Neurosci Res* 2003, **72**:503-507.
- Komine-Kobayashi M, Zhang N, Liu M, Tanaka R, Hara H, Osaka A, Mochizuki H, Mizuno Y, Urabe T: **Neuroprotective effect of recombinant human granulocyte colony-stimulating factor in transient focal ischemia of mice.** *J Cereb Blood Flow Metab* 2006, **26**:402-413.
- Solaroglu I, Cahill J, Tsubokawa T, Beskonakli E, Zhang JH: **Granulocyte colony-stimulating factor protects the brain against experimental stroke via inhibition of apoptosis and inflammation.** *Neurol Res* 2009, **31**:167-172.
- Park HK, Chu K, Lee ST, Jung KH, Kim EH, Lee KB, Song YM, Jeong SW, Kim M, Roh JK: **Granulocyte colony-stimulating factor induces sensorimotor recovery in intracerebral hemorrhage.** *Brain Res* 2005, **1041**:125-131.
- Dayer AG, Cleaver KM, Abouantoun T, Cameron HA: **New GABAergic interneurons in the adult neocortex and striatum are generated from different precursors.** *J Cell Biol* 2005, **168**:415-427.
- Luzzati F, De Marchis S, Fasolo A, Peretto P: **Neurogenesis in the caudate nucleus of the adult rabbit.** *J Neurosci* 2006, **26**:609-621.
- Jung KH, Chu K, Lee ST, Kang L, Kim SU, Kim M, Roh JK: **G-CSF protects human cerebral hybrid neurons against in vitro ischemia.** *Neurosci Lett* 2006, **394**:168-173.
- Pandya NM, Dhalla NS, Santani DD: **Angiogenesis--a new target for future therapy.** *Vasc Pharmacol* 2006, **44**:265-274.

22. Slevin M, Kumar P, Gaffney J, Kumar S, Krupinski J: **Can angiogenesis be exploited to improve stroke outcome? Mechanisms and therapeutic potential.** *Clin Sci (Lond)* 2006, **111**:171-183.
23. Arenillas JF, Sobrino T, Castillo J, Davalos A: **The role of angiogenesis in damage and recovery from ischemic stroke.** *Curr Treat Options Cardiovasc Med* 2007, **9**:205-212.
24. Hayashi T, Deguchi K, Nagotani S, Zhang H, Sehara Y, Tsuchiya A, Abe K: **Cerebral ischemia and angiogenesis.** *Curr Neurovasc Res* 2006, **3**:119-129.
25. Krupinski J, Kaluza J, Kumar P, Kumar S, Wang JM: **Role of angiogenesis in patients with cerebral ischemic stroke.** *Stroke* 1994, **25**:1794-1798.
26. Lee ST, Chu K, Jung KH, Ko SY, Kim EH, Sinn DI, Lee YS, Lo EH, Kim M, Roh JK: **Granulocyte colony-stimulating factor enhances angiogenesis after focal cerebral ischemia.** *Brain Res* 2005, **1058**:120-128.
27. Taguchi A, Wen Z, Myojin K, Yoshihara T, Nakagomi T, Nakayama D, Tanaka H, Soma T, Stern DM, Naritomi H, et al: **Granulocyte colony-stimulating factor has a negative effect on stroke outcome in a murine model.** *Eur J Neurosci* 2007, **26**:126-133.
28. Meisel C, Schwab JM, Prass K, Meisel A, Dirnagl U: **Central nervous system injury-induced immune deficiency syndrome.** *Nat Rev Neurosci* 2005, **6**:775-786.
29. Becker KJ, Kindrick DL, Lester MP, Shea C, Ye ZC: **Sensitization to brain antigens after stroke is augmented by lipopolysaccharide.** *J Cereb Blood Flow Metab* 2005, **25**:1634-1644.
30. Schwartz M, Kipnis J: **Protective autoimmunity and neuroprotection in inflammatory and noninflammatory neurodegenerative diseases.** *J Neurol Sci* 2005, **233**:163-166.
31. Yilmaz G, Arumugam TV, Stokes KY, Granger DN: **Role of T lymphocytes and interferon-gamma in ischemic stroke.** *Circulation* 2006, **113**:2105-2112.
32. Hartung T, Von Aulock S, Schneider C, Faist E: **How to leverage an endogenous immune defense mechanism: the example of granulocyte colony-stimulating factor.** *Crit Care Med* 2003, **31**:S65-S75.
33. Gibson CL, Jones NC, Prior MJ, Bath PM, Murphy SP: **G-CSF suppresses edema formation and reduces interleukin-1beta expression after cerebral ischemia in mice.** *J Neuropathol Exp Neurol* 2005, **64**:763-769.
34. Loddick SA, Rothwell NJ: **Neuroprotective effects of human recombinant interleukin-1 receptor antagonist in focal cerebral ischaemia in the rat.** *J Cereb Blood Flow Metab* 1996, **16**:932-940.
35. Sevimli S, Diederich K, Strecker JK, Schilling M, Klocke R, Nikol S, Kirsch F, Schneider A, Schabitz WR: **Endogenous brain protection by granulocyte-colony stimulating factor after ischemic stroke.** *Exp Neurol* 2009, **217**:328-335.
36. O'Collins VE, Macleod MR, Donnan GA, Horkey LL, Worp BH van der, Howells DW: **1,026 experimental treatments in acute stroke.** *Ann Neurol* 2006, **59**:467-477.
37. **Recommendations for standards regarding preclinical neuroprotective and restorative drug development.** *Stroke* 1999, **30**:2752-2758.
38. Gibson CL, Bath PM, Murphy SP: **G-CSF reduces infarct volume and improves functional outcome after transient focal cerebral ischemia in mice.** *J Cereb Blood Flow Metab* 2005, **25**:431-439.
39. Yanqing Z, Yu-Min L, Jian Q, Bao-Guo X, Chuan-Zhen L: **Fibronectin and neuroprotective effect of granulocyte colony-stimulating factor in focal cerebral ischemia.** *Brain Res* 2006, **1098**:161-169.
40. Lan X, Qu H, Yao W, Zhang C: **Granulocyte-colony stimulating factor inhibits neuronal apoptosis in a rat model of diabetic cerebral ischemia.** *Tohoku J Exp Med* 2008, **216**:117-126.
41. Zhao LR, Singhal S, Duan WM, Mehta J, Kessler JA: **Brain repair by hematopoietic growth factors in a rat model of stroke.** *Stroke* 2007, **38**:2584-2591.
42. Phillip M, Benatar M, Fisher M, Savitz SI: **Methodological quality of animal studies of neuroprotective agents currently in phase III/III acute ischemic stroke trials.** *Stroke* 2009, **40**:577-581.
43. Horn J, de Haan RJ, Vermeulen M, Luiten PG, Limburg M: **Nimodipine in animal model experiments of focal cerebral ischemia: a systematic review.** *Stroke* 2001, **32**:2433-2438.
44. Macleod MR, O'Collins T, Howells DW, Donnan GA: **Pooling of animal experimental data reveals influence of study design and publication bias.** *Stroke* 2004, **35**:1203-1208.
45. Macleod MR, O'Collins T, Horkey LL, Howells DW, Donnan GA: **Systematic review and metaanalysis of the efficacy of FK506 in experimental stroke.** *J Cereb Blood Flow Metab* 2005, **25**:713-721.
46. Sena E, Wheble P, Sandercock P, Macleod M: **Systematic review and meta-analysis of the efficacy of tirilazad in experimental stroke.** *Stroke* 2007, **38**:388-394.
47. Minnerup J, Heidrich J, Wellmann J, Rogalewski A, Schneider A, Schabitz WR: **Meta-analysis of the efficacy of granulocyte-colony stimulating factor in animal models of focal cerebral ischemia.** *Stroke* 2008, **39**:1855-1861.
48. Zhao LR, Berra HH, Duan WM, Singhal S, Mehta J, Apkarian AV, Kessler JA: **Beneficial effects of hematopoietic growth factor therapy in chronic ischemic stroke in rats.** *Stroke* 2007, **38**:2804-2811.
49. Grotta JC: **Acute stroke therapy at the millennium: consummating the marriage between the laboratory and bedside. The Feinberg lecture.** *Stroke* 1999, **30**:1722-1728.

Publish with **BioMed Central** and every scientist can read your work free of charge

"BioMed Central will be the most significant development for disseminating the results of biomedical research in our lifetime."

Sir Paul Nurse, Cancer Research UK

Your research papers will be:

- available free of charge to the entire biomedical community
- peer reviewed and published immediately upon acceptance
- cited in PubMed and archived on PubMed Central
- yours — you keep the copyright

Submit your manuscript here:
http://www.biomedcentral.com/info/publishing_adv.asp

