

RESEARCH ARTICLE

Open Access

Modular titanium alloy neck adapter failures in hip replacement - failure mode analysis and influence of implant material

Thomas M Grupp^{1*}, Thomas Weik^{1†}, Wilhelm Bloemer¹, Hanns-Peter Knaebel²

Abstract

Background: Modular neck adapters for hip arthroplasty stems allow the surgeon to modify CCD angle, offset and femoral anteversion intraoperatively. Fretting or crevice corrosion may lead to failure of such a modular device due to high loads or surface contamination inside the modular coupling. Unfortunately we have experienced such a failure of implants and now report our clinical experience with the failures in order to advance orthopaedic material research and joint replacement surgery.

The failed neck adapters were implanted between August 2004 and November 2006 a total of about 5000 devices. After this period, the titanium neck adapters were replaced by adapters out of cobalt-chromium. Until the end of 2008 in total 1.4% (n = 68) of the implanted titanium alloy neck adapters failed with an average time of 2.0 years (0.7 to 4.0 years) postoperatively. All, but one, patients were male, their average age being 57.4 years (36 to 75 years) and the average weight 102.3 kg (75 to 130 kg). The failures of neck adapters were divided into 66% with small CCD of 130° and 60% with head lengths of L or larger. Assuming an average time to failure of 2.8 years, the cumulative failure rate was calculated with 2.4%.

Methods: A series of adapter failures of titanium alloy modular neck adapters in combination with a titanium alloy modular short hip stem was investigated. For patients having received this particular implant combination risk factors were identified which were associated with the occurrence of implant failure. A Kaplan-Meier survival-failure-analysis was conducted. The retrieved implants were analysed using microscopic and chemical methods. Modes of failure were simulated in biomechanical tests. Comparative tests included modular neck adapters made of titanium alloy and cobalt chrome alloy material.

Results: Retrieval examinations and biomechanical simulation revealed that primary micromotions initiated fretting within the modular tapered neck connection. A continuous abrasion and repassivation process with a subsequent cold welding at the titanium alloy modular interface. Surface layers of 10 - 30 µm titanium oxide were observed. Surface cracks caused by fretting or fretting corrosion finally lead to fatigue fracture of the titanium alloy modular neck adapters. Neck adapters made of cobalt chrome alloy show significantly reduced micromotions especially in case of contaminated cone connection. With a cobalt-chromium neck the micromotions can be reduced by a factor of 3 compared to the titanium neck. The incidence of fretting corrosion was also substantially lower with the cobalt-chromium neck configuration.

Conclusions: Failure of modular titanium alloy neck adapters can be initiated by surface micromotions due to surface contamination or highly loaded implant components. In the present study, the patients at risk were men with an average weight over 100 kg. Modular cobalt chrome neck adapters provide higher safety compared to titanium alloy material.

* Correspondence: thomas.grupp@aesculap.de

† Contributed equally

¹Aesculap AG Research & Development, Tuttlingen, Germany

Background

Total Hip Arthroplasty (THA) has become a successful clinical treatment to restore the function of the joint, with a positive impact on the patient's quality of life. Modular connections for hip prostheses have been used since the early 70ies for heads with different neck sizes or diameters. Later in the 90ies, modular neck adapters have been introduced [1,2] for intraoperative adjustment of collum-caput-diaphysis (CCD) angle and femoral anteversion to optimise offset and leg length, irrespective of the hip stem implanted. These solutions have been proven their relevance in total hip arthroplasty [3,4]. Several failures of modular connections in hip replacement including primary and revision stem components [5-8] were reported. Long-term experiences with modular heads made of cobalt-chromium alloy (CoCr29Mo6) in combination with the cone of the stem out of titanium alloy (TiAl6V4) have revealed, apart from traces of fretting corrosion, no adverse events such as fractures of the tapers in clinical use [9-17]. Failures of modular neck adapters have been rarely documented [5-7]. In 2007, we reported three cases of a failure of a modular short hip stem [8]. The purpose of this paper is to present the state-of-the-art research and the recent findings of the failure analysis.

Case history

The failed neck adapters were implanted between August 2004 and November 2006. After the third incident, the titanium neck adapters were replaced by adapters out of cobalt-chromium [8]. A typical x-ray of a failed titanium neck adapter is shown in Figure 1.

The failure of the neck did not cause further damage on the acetabulum side. Subsequently, there was no need to revise the cups in all of these cases. Modular cup inserts were replaced in some cases due to visible signs of damage originated by the neck failure or for reasons of precaution. About 5000 hip joints have been implanted with the titanium stem and titanium neck adapter material combination. Until the end of 2008 1.4% ($n = 68$) of the titanium alloy neck adapters failed after an average time in vivo of 24 months (Figure 2). All, but one, patients were male and most patients (59%) had a weight above 100 kg and an average body mass index (BMI) of 31.6 (24 to 42) (Figure 3).

An overview about the average age, weight and post-operative time until failure of the titanium alloy neck adapter in 68 patients and the distribution of neck adapter geometry, head size and length is given in Table 1. The implant size did not have a detectable influence on the occurrence of neck failure. The neck adapter failures were divided into 66% with a CCD angle of 130°, 34% with a CCD angle 135° and none with 140°.

A Kaplan-Meier survival analysis (Statistica 7, StatSoft Europe GmbH, Hamburg, Germany) was undertaken

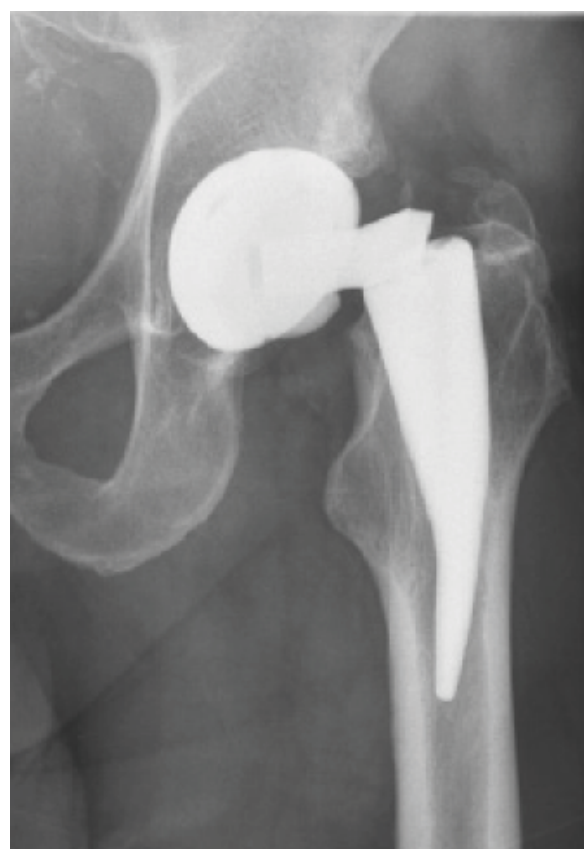


Figure 1 X-ray of a hip with a failed neck.

with revision due to failed neck adapter as an endpoint (confidence interval $\pm 95\%$). A cumulative survival rate of 98.6% was calculated with fractured neck adapter as the causative factor of failure (Figure 4).

There was no correlation between implant failures and a specific clinic or surgeon.

Methods

Implant component description

The modular neck adapters and stems used in our study were in all cases the Metha Short Hip Stem Prosthesis (Aesculap AG, Tuttlingen, Germany). Adapters and stems were made of titanium alloy. With its circumferential pure titanium porous coating and additive thin layer of dicalcium phosphate dehydrate (Plasmapore® μCaP , Aesculap, Tuttlingen, Germany), the stem is designed for cementless anchorage (Figure 5). The modular neck adapters were used in three different CCD-angles (130°, 135° and 140°) in combination with neutral, anteverted and retroverted ($\pm 7.5^\circ$) versions to adjust the CCD-angle intraoperatively [4].

Retrieval analysis

In the retrieval analysis, the failed neck adapters were subjected to a detailed examination to which most

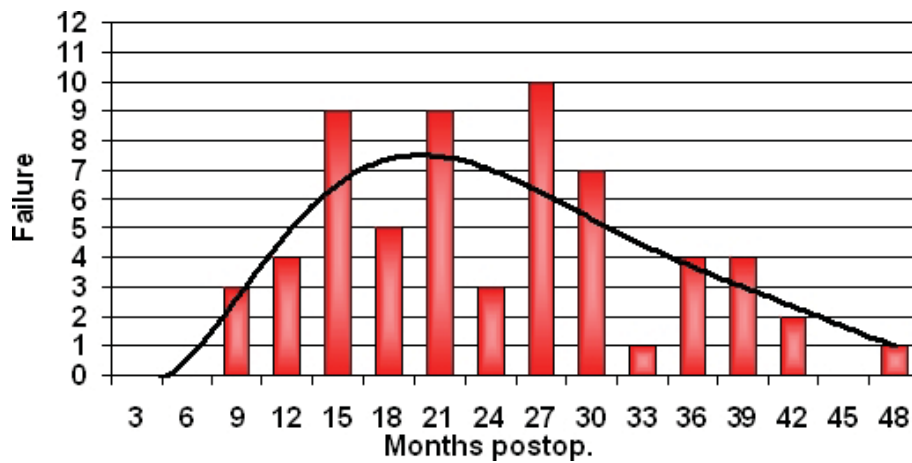


Figure 2 Occurrence of clinical neck failures in a postoperative time period in months.

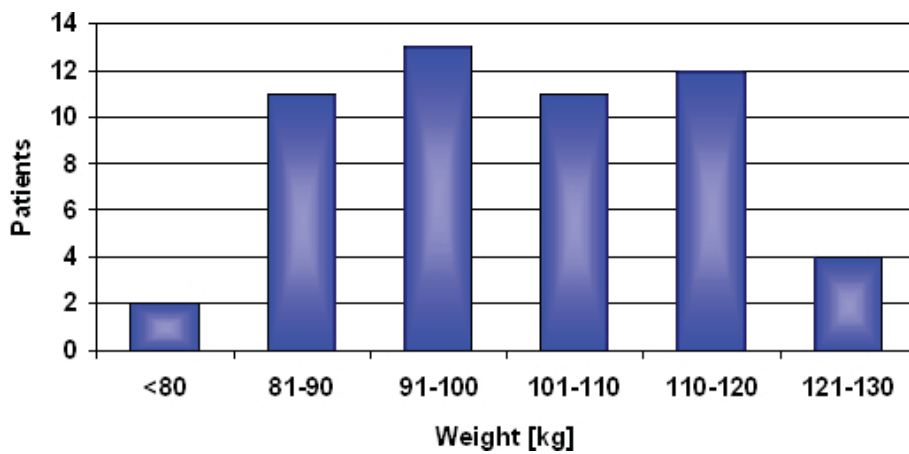


Figure 3 Correlation weight of patients and failures.

Table 1 Overview about the average age, weight and time in vivo until failure of the titanium alloy neck adapter in 68 patients and distribution of neck adapter and combined head geometry

age	Ø 57.2 years (36 - 75 years)					
weight	Ø 102.3 kg (75 to 130 kg)					
time in vivo	Ø 24 months (8 to 48 months)					
neck adapter (CCD-angle)	130°/0°	130° ± 7.5°	135°/0°	135° ± 7.5°	140°/0°	140° ± 7.5°
	29	16	18	5	-	-
head length	S	M	L	XL	XXL	unknown
	4	22	26	7	6	3
head diameter	28 mm		32 mm		36 mm	
	11		50		7	
head material	CoCrMo		Biolox forte		Biolox delta	
	13		53		2	

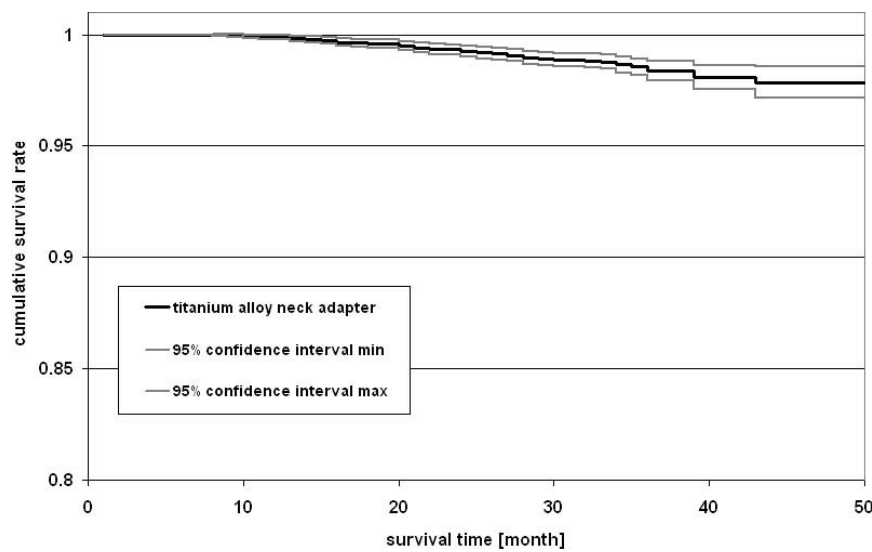


Figure 4 Kaplan-Meier survival analysis for failed neck adapter as reason of revision (\pm 95% confidence interval).

patients consented. The analysis is in every case based on the failed neck adapter and the hip stem including the remaining distal part of the neck adapter. The revised modular heads and cup inserts were in most of the cases not available and not subject of this examination. The present report is based on the retrieval analysis of 47 devices, the complete investigation data being compiled at the end of 2008. The fracture and modular

connection surfaces were evaluated using light microscope and scanning electron microscope (SEM) (Zeiss EVO 50, Carl Zeiss NTS GmbH Oberkochen, Germany).

The fragment of the broken adapters which remained inside the shaft was cut through axially. One half of the adapters was cautiously removed from the shaft to examine the contact zone between the two components. The other half was left inside the shaft to enable the metallographic investigation of the interface and the microstructure of the materials. To enable the metallographic investigation of the neck adapter/stem interface the samples were prepared by mechanical cutting using a cut off-wheel (Secotom 10 Struers A/S, Denmark). After embedding into epoxy resin (Polyfast Struers A/S, Denmark) the cross section was prepared by grinding, polishing and etching according to the method by Kroll (composition 100 ml distilled H₂O, 1 ml HF, 3 ml HNO₃). The investigation was performed by light microscope (Wilde M3Z Herrenbrugg, Switzerland) with a magnification up to 500-times.

The chemical composition of the abrasive substances found in the crevice of the cone connection was determined using energy dispersive analysis (EDX) (Oxford EDX-Analysensystem INCA 7059 Oberkochen, Germany) and wet chemical digestion. The surface of the cone was rinsed cautiously using dilute acid. After hot digestion and dilution the analysis of the elements was performed using inductively coupled plasma optical emission spectrometry (ICP-OES Horiba Ultima II Jobin Yvon Longjumeau, France).

Micromotion analysis of the modular neck stem interface
To quantify the relative motion in the interface of the modular hip stem out of titanium alloy a total of eight

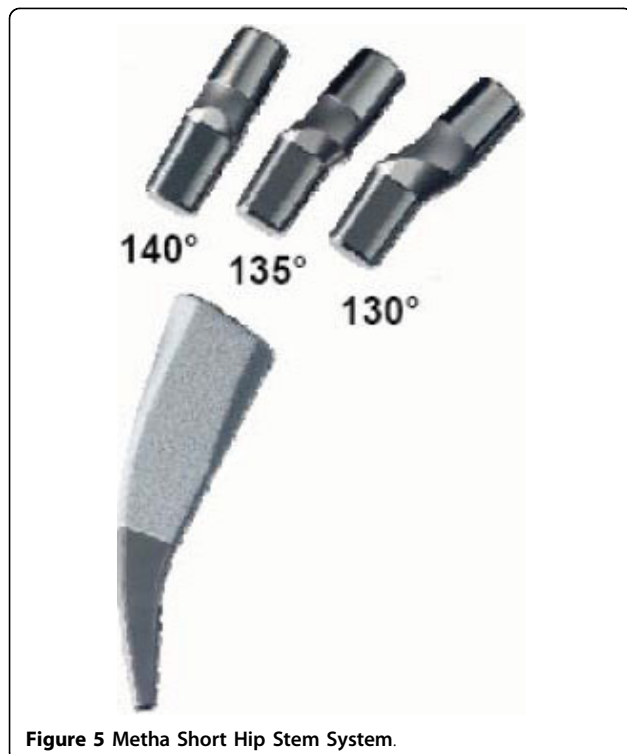


Figure 5 Metha Short Hip Stem System.



Figure 6 Test setup for measurement of micromotions in the modular cone connection (left) and particle-contaminated joining area (right) [18,19].

specimens with neck adapters out of titanium alloy and cobalt-chromium alloy were examined. As it appears that intraoperative contamination of the cone connection with bone particles has an considerable impact on the magnitude of fretting in the interface due to increased micromotions, a specific test setup was developed at the Biomechanics Section of the Hamburg University of Technology (Prof. Michael M. Morlock) and each device being tested with a clean and with a particle contaminated joining area (small porcine bone grafts approximately 1 mm in diameter) [18,19]. To determine the relative motion between neck adapter and stem a contactless measurement system (Micro-Epsilon Type U05(78) Messtechnik Ortenburg, Germany) was used. Two sensors with a range of 500 μm and a sensitivity of 0.025 μm were fixed on an aluminium plate and mounted on the neck adapter. Two steel plates fixed on the resection plane of the stem served as targets for the sensors (Figure 6).

The stem was combined with neck adapters with 130° CCD angle, embedded in bone cement (Palacos R, Heraeus Medical GmbH Wehrheim, Germany) and tested on a servohydraulic testing machine (MTS 850.2, MTS Systems Corporation Eden Prairie MN, USA). A sinusoidal axial force between 50 and 2500 N was applied via a ceramic head with neck length L at a frequency of 1 Hz for 2000 cycles to measure the relative displacement between neck adapter and stem with regard to irreversible settling and micromotions. A statistical analysis was performed to distinguish between independent groups (clean and particle contaminated joining area) (paired Student's t test) for both neck adapter materials (SPSS 15.0).

Pre-clinical fatigue testing

To determine the endurance properties of the neck region comparative tests were performed according to ASTM F 2068-03 and ISO 7206-6:1992(E) (MTS Mini Bionix II, MTS Systems GmbH Berlin, Germany). The hip contact force was set at 5340 N with a sinusoidal loading mode (ratio $F_{\text{min}}/F_{\text{max}} = 0.1$). In a saline

medium (0.9%, pH 7) the number of cycles was set at 10 million load alterations at a frequency of 15 Hz. In a worst case scenario using a 32 mm diameter XL head, neck fatigue was tested on the smallest modular stem in combination with neck components with 130° CCD angle and 7.5° retrotorsion out of titanium and cobalt-chromium alloy, respectively. A paired Student's t test was used to differentiate the fatigue behaviour of the two neck adapter materials (Statistica 7, StatSoft Europe GmbH, Hamburg, Germany).

To evaluate the coaction of the stem/neck modularity with the hip stem, the modular stems were tilted both in the frontal plane ($\alpha = 10^\circ$) and in the sagittal plane ($\beta = 9^\circ$). Based on CT scans on several human femurs and the specific stem design the level of embedding was set to 45 mm below the centre of the head to simulate a deficiency of proximal support due to bone loss in the neck and trochanter region (Figure 7).

For these customised test, the hip contact force was set at 2300 N for 5 million cycles according ISO 7206-8:1995(E) followed by a stepwise load increase (Locati method 500 N, 1 million cycles) until failure. These customised test setup was introduced to analyse if the mode of fatigue failure occurs in the modularity or in the stem region outside of the neck/stem connection.

To simulate the clinical failure modes in vitro, parameters for the titanium neck adapters were varied as shown in Table 2.

The resultant hip contact force was set at 3800 N to simulate a higher strain as in overweight or active patients. The test frequency was decreased from 15 Hz to 1 Hz to detect a possible influence on fretting corrosion in the modular neck interface. To simulate the patient's situation in daily life more realistically frequent stress phases alternated with rest phases. Taking into account the clinical conditions of hip replacement assembly, the connection was contaminated with blood, serum and cortical bone particles (approximately 1 mm in diameter) to provoke a mechanical disturbance in the interface. Additionally, the surrounding chemical

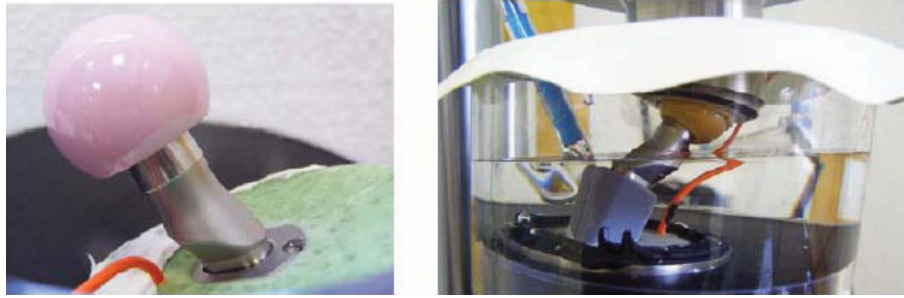


Figure 7 Test setup for neck test (left) and stem test (right) with reference electrode to measure corrosion potential.

conditions were altered by modifying pH values and enhancing chloride concentrations with the use of NaCl, CaCl₂ and FeCl₃ to accelerate any eventual tribochemical processes. To determine the continuous abrasion and repassivation of the titanium alloy surfaces in the neck/stem connection the redox potential was measured (InLab® 301 Mettler Toledo Balingen, Germany).

Results

Findings of the retrieval examination in clinical failures

All retrieved modular adapters showed similar breakage cross-sections. The fatigue fracture starts in the anterolateral area at the upper part of the conical connection, the area subjected to maximum biomechanical stress. The fatigue fracture is followed by the residual forced fracture (Figure 8).

Metallographic analyses showed that microcracks developed on the surface of the cone in the clamping range (Figure 9). It appears that these microcracks induced the fatigue crack which finally led to the implant failure. Microcracks were analyzed using a scanning electron microscope. Figure 9 shows a potential micro crack in an area where fretting marks can be seen on the surface of the cone.

The examination did not indicate any product deviation, manufacturing failure or batch correlation, thus excluding any manufacturing influence as cause for implant breakage. In the majority of cases, the surface of the cones was significantly modified and showed signs of fretting corrosion. Among the forty-seven of the revised cones available for examination, a total of 87%

presented substantial fretting overlaid by laminar corrosion of different intensity (Figure 10).

The findings of the corrosive alteration apart of fretting have not been corroborated by biomechanical tests so far [8,14]. Metallographic cross sections of the cone show a 20 µm up to 30 µm thick layer developing in the modular joining area of most of the revised implants (Figure 11), a layer composed of different abrasive and corrosive substances including a high amount of titanium dioxide. The layer was formed due to abrasion of the passive oxide layer protecting the titanium alloy against corrosion. Continued abrasion and repeated repassivation of the titanium alloy surface produced the oxide layer's characteristic thickness.

Additionally in some cases this process accelerated through crevice corrosion as the reduction of the pH to values of about 2-3 indicates.

In one patient weighing 100 kg, a revision had to be carried out after 26 months to improve the offset due to cup loosening, thus providing the possibility to examine a faultless titanium adapter. (Figure 12).

The surface of the cone adapter which was not cleaned after revision was examined using a scanning electron

Table 2 In vitro model to simulate the clinical failure modes with various parameters

Hip contact force	3800 N
Frequency	1 Hz/15 Hz
Stress and rest phases	1,000 cycles, 1.5 minutes rest, 1,000 cycles, 1.5 minutes rest repeat
Contamination	Dry, Blood, Serum, Cortical bone particles
Surrounding medium	Saline 0.9% pH 7 Saline 1.8% pH 2 CaCl ₂ solution pH 2 FeCl ₃ solution pH 0.5



Figure 8 Fatigue fracture surface of a clinically failed titanium neck adapter.

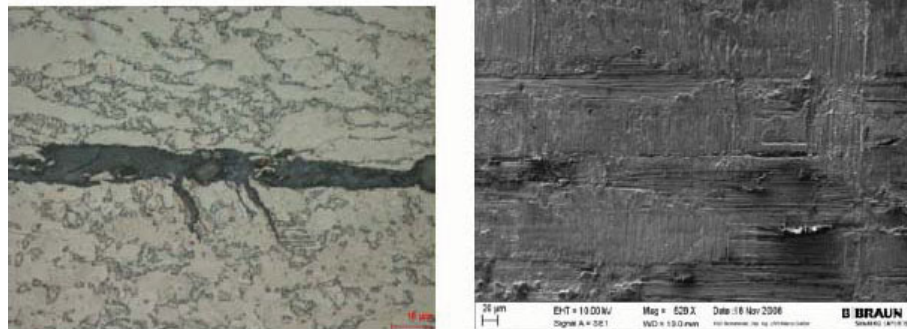


Figure 9 Metallographic analyses revealed microcracks on the cone surface (left) and a potential microcrack in a fretting area (right).

microscope. No calcium or phosphor could be detected. There was no indication of a contamination of the cone connection by bone particles. Besides mild abrasion on the surface, no signs of fretting corrosion could be found.

Influence of micromotions on the modular neck stem interface

The major part of the observed displacement was caused by elastic deformation of the neck adapter. The micromotions of the titanium neck adapter were in a clean condition $6 \pm 4 \mu\text{m}$ (medial) and $6 \pm 2 \mu\text{m}$ (lateral) and with particle contamination $18 \pm 3 \mu\text{m}$ (medial) and $15 \pm 4 \mu\text{m}$ (lateral). In each contaminated joining area, the displacement and the micromotions were larger than in a clean condition. The fully uncontaminated components showed a distinct and definitive settling within the first 20 cycles. In case of a contaminated joining area the settling process of the neck adapter did not come to an end and lasted over the entire test duration (2000 cycles) (Figure 13).

The titanium alloy neck adapter showed a significant increase of micromotions in the interface of the particle-contaminated joining ($p < 0.01$) in comparison to clean conditions (Figure 14). The micromotions of the

neck adapter out of cobalt-chromium were in a clean condition $3 \pm 1 \mu\text{m}$ (medial) and $3 \pm 1 \mu\text{m}$ (lateral) and with particle contamination $5 \pm 6 \mu\text{m}$ (medial) and $3 \pm 2 \mu\text{m}$ (lateral).

In the case of the cobalt-chromium alloy neck adapter, the contamination of the joining area did not influence the micromotions significantly ($p = 0.43$).

In vitro fatigue behaviour of the stem/neck modularity

The neck adapters made of titanium and of cobalt-chromium alloy showed significantly different ($p = 0.009$) endurance behaviour. The Ti6Al4V adapters combined with a 28 L Biolox forte head failed after 2.45 million cycles (range 0.189 to 4.43). No failure occurred with the cobalt-chromium adapters (32 XL Biolox option) up to 20 million cycles.

Simulating a deficiency in proximal stem support the fatigue behaviour of the coaction of the stem/neck modularity with the hip stem was examined in a customised test setup. The titanium alloy neck adapters fulfilled the ISO 7206-8: 1995(E) requirements (2300 N for 5 million cycles) and failed during a stepwise increase of the applied force (Locati method) at a high load level of 5300 N after 0.7 million cycles (range 0.63 to 0.75). In a

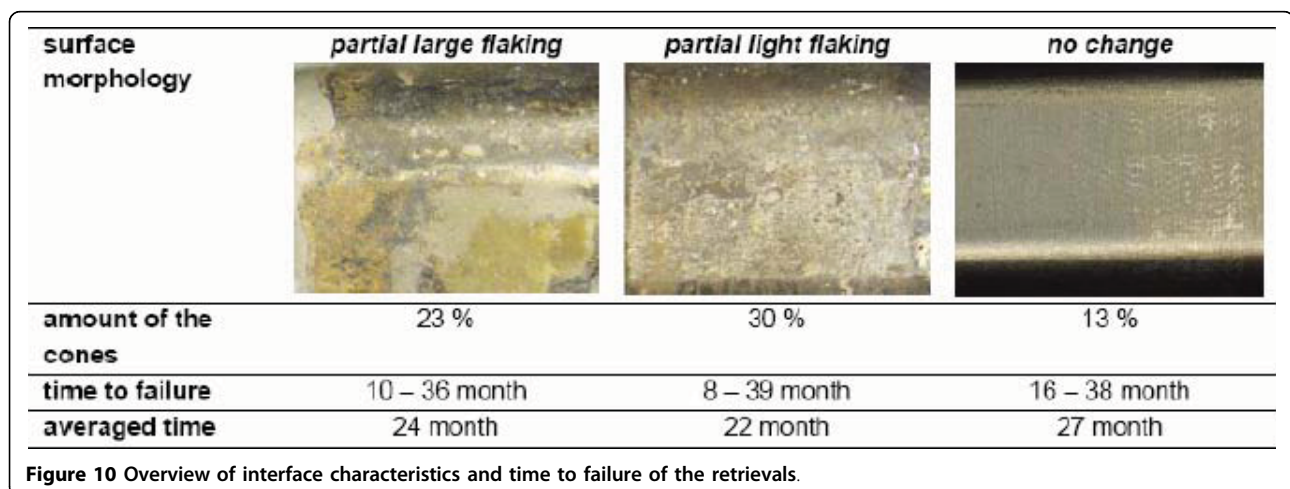


Figure 10 Overview of interface characteristics and time to failure of the retrievals.

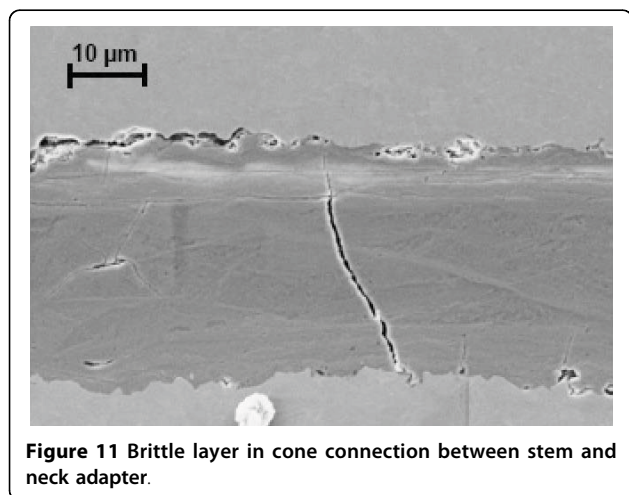


Figure 11 Brittle layer in cone connection between stem and neck adapter.

direct comparison, the cobalt-chromium neck adapters did not fail in the Locati test until the stem fractured at 6800 N load after 0.3 million cycles (Figure 15). Furthermore, the cobalt-chromium neck components did not fracture at 5300 N during 10 million cycles.

Contamination with cortical bone particles in the interface was found to be the main influence factor on the fatigue behaviour of the titanium alloy neck adapter. With a hip contact force of 3800 N the contaminated titanium alloy neck adapters failed after 3 million cycles (range 2.7 to 3.3) while no failure occurred under clean interface conditions (run-out limit 10 million cycles). This is mainly due to the increase of micromotions and the resulting fretting corrosion in the modular neck interface. In clean conditions, the load has to be increased up to 5300 N to provoke a similar failure mode. The redox potential measures fretting corrosion and repassivation on metallic surfaces. It shows impressively that introducing cortical particles into the modular neck interface generates a

mechanical disturbance which triggers repassivation processes in high frequency (Figure 16).

Discussion

This study confirms that the failure of the adapter cannot be attributed to any material or processing deviation or incorrect dimensioning. A twisted assembling of the adapter can also be excluded.

Due to mechanical perturbation in the modular connection, micro-movements caused fretting on the surface. Microcracks developed in the fretting zone, ultimately leading to the dynamic fatigue fracture of the implant. In 87% of the cases, fretting was accompanied by corrosion [17,20-25] as it initiates crevice corrosion [26,27]. The combination of fretting and crevice corrosion destroys the passive layer permanently. The electrochemical reactions provoke a shift in the pH value into the acidic range. The corrosion process generates a fissured surface of the connecting cone and can also generate microcracks. The examinations revealed that corrosion does not trigger the implant failure but does accelerate the process [26]. Cone adapters free from corrosive attack last the longest period up to failure (Figure 10).

In general, the titanium alloy provides excellent corrosion resistance and high biocompatibility because it quickly develops a thin passive layer with a thickness under 1 μm. Under inadequate conditions of cone assembling and in case of micro-movements within the modular connection, the protective passive layer is abraded initiating a continued abrasion and repassivation process which depletes the oxygen inside the crevice [17]. The metallic surface in the crevice becomes anodic relative to the outer surface, thus triggering an electrolytic process. The presence of chloride ions which disturb the passivity, induces pitting corrosion in the crevice leading to a quick dissolution of the metal

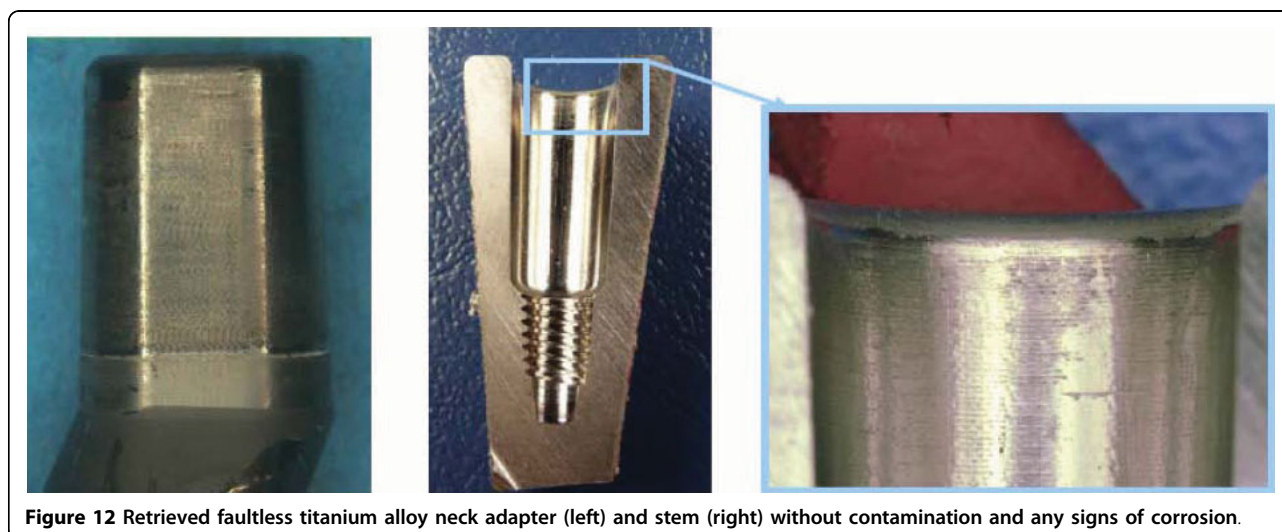


Figure 12 Retrieved faultless titanium alloy neck adapter (left) and stem (right) without contamination and any signs of corrosion.

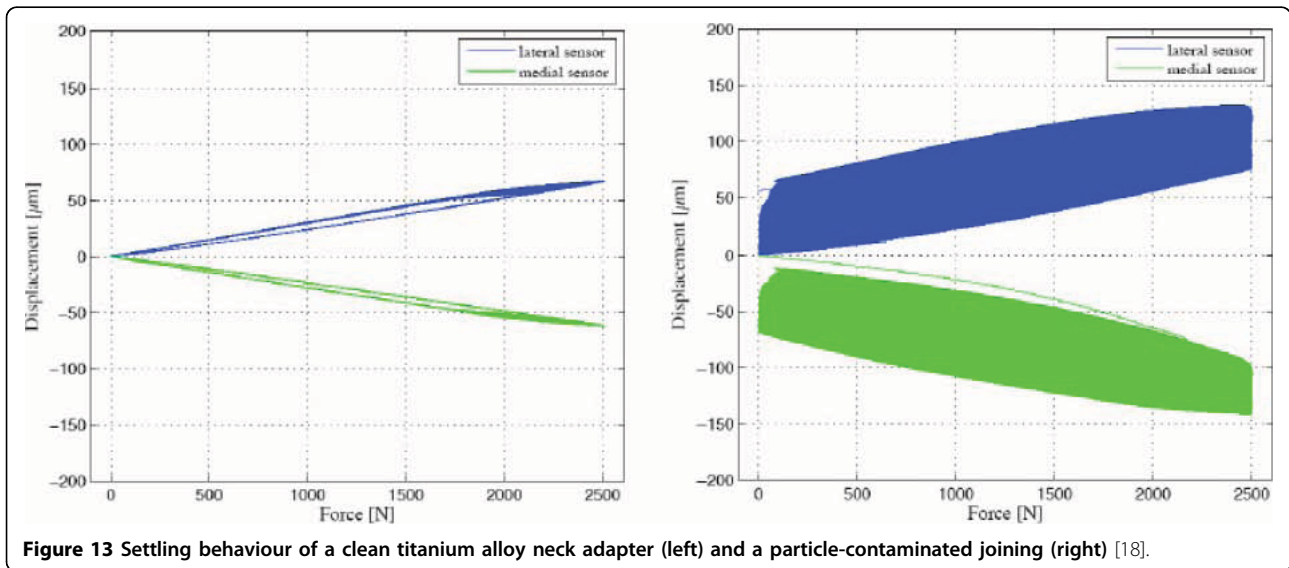


Figure 13 Settling behaviour of a clean titanium alloy neck adapter (left) and a particle-contaminated joining (right) [18].

accompanied by an acidification of the electrolyte [12,20,21,28].

Inside the layer, the elements calcium and phosphor could be detected and verified by different analytical methods. The crystalline composition of the calcium phosphate compound seems to indicate that the wear debris contained bone particles. Impurities which get inside the cone during intraoperative assembly may contribute to a mechanical perturbation which manifests itself as micro-movements which initiates fretting.

The study suggests the following hypothesis as to the cause of the damage. Fretting occurs when two surfaces in contact experience small amplitude oscillary relative

motion; damage is induced on the fretting region. If the fretting fatigue strength of the material is exceeded, microcracks develop on the surface. In addition, tribochemically activated particles can discharge their content from the surface. These particles react with oxygen spontaneously, thus leading to fretting corrosion.

The severity of corrosion depends mainly from the frequency of the fretting action. For lower cyclic rates such as in a hip implant, the debris is usually oxidized if the environment is chemically active. The repeated removal of oxide films due to continued abrasion and repassivation produces thick oxide layer's. Such oxides are normally harder than the virgin titanium alloy

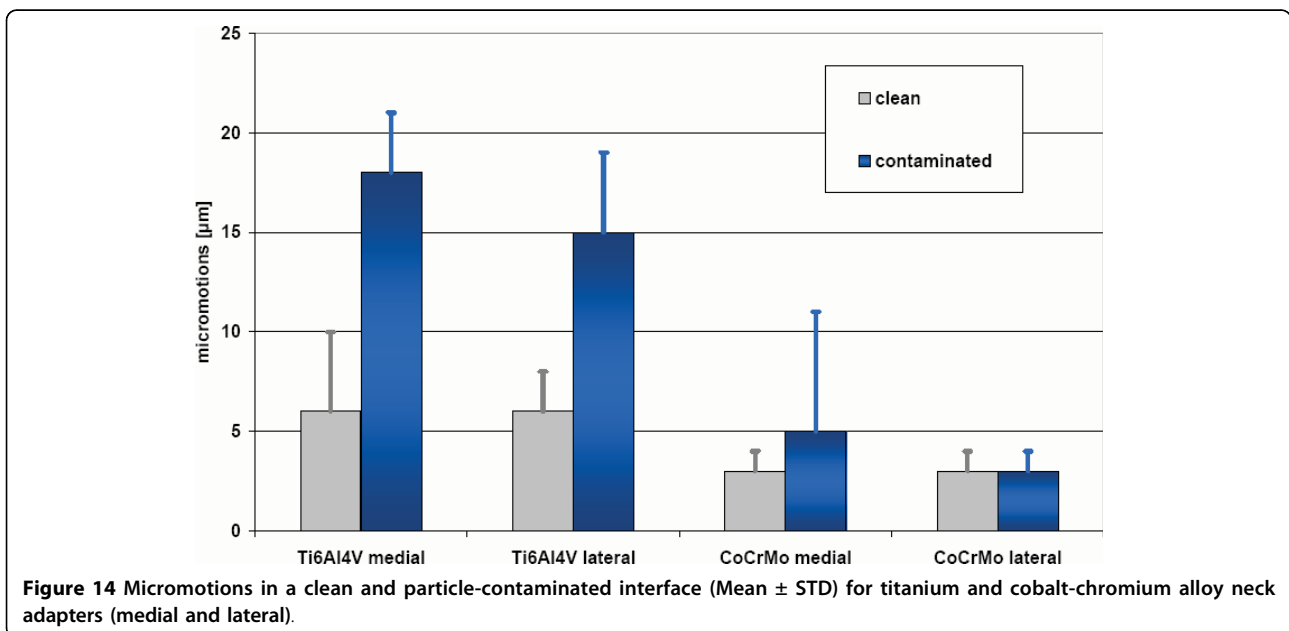


Figure 14 Micromotions in a clean and particle-contaminated interface (Mean ± STD) for titanium and cobalt-chromium alloy neck adapters (medial and lateral).

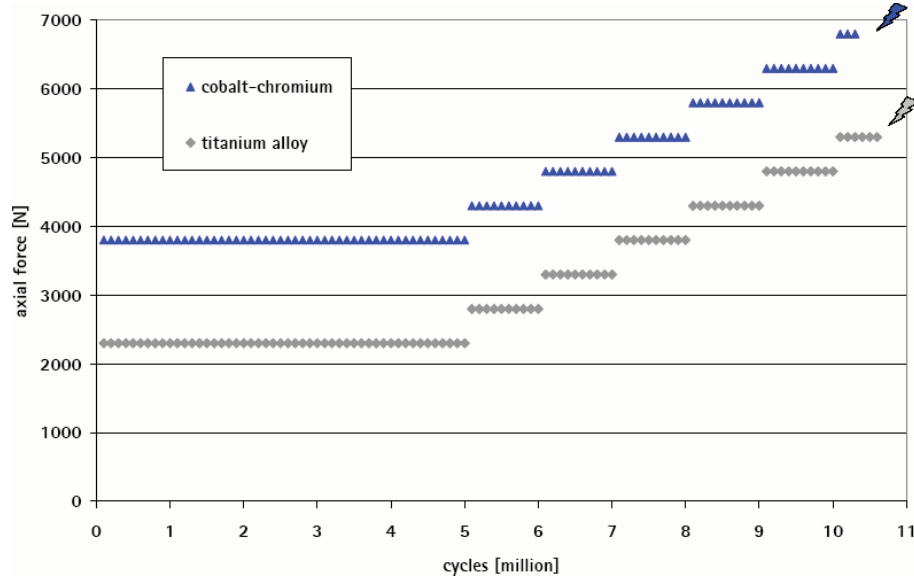


Figure 15 Endurance behaviour of the modular stem and different failure mechanisms for neck components made of titanium (failure of the neck adapter) and of cobalt-chromium alloy (fractured stem at a level below the embedding).

leading to greater surface damage [29-31] These damages then accelerate the crack nucleation [32,33].

Fretting reduces the fatigue strength of the titanium significantly [34]. To a great extent, this can be avoided by using of cobalt-chromium. The criteria listed in Table 3 show the comparison of the different materials which have been verified by biomechanical investigation. At a load of 5300 N the adapter made of the cobalt-based alloy did not break. At this high load level, the titanium adapter fractured after 2.45 million cycles.

The surface damage of the titanium alloy adapters caused by the microcracks or by corrosive deterioration accelerates the propagation of cracks by the cyclic loads bringing about the dynamic fatigue failure of the adapters. Micro-movements cause fretting in the cone connection. They can be increased by contamination of the cone connection through tissue or other particles intraoperatively. To anticipate this process any contamination of the connection should be avoided and the components dried before assembling. For this purpose

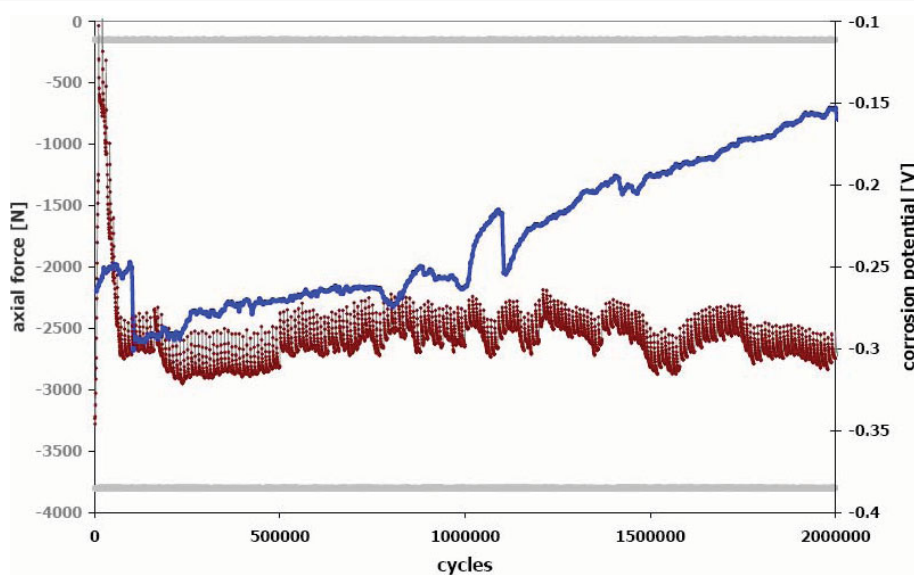


Figure 16 Free redox potential with frequent repassivation processes in the particle-contaminated modular neck interface (red curve) compared with a clean joining (blue curve).

Table 3 Assessment of the cone adapter made of the different materials - (ooo = excellent oo = good o = moderate)

	TiAl6V4	CoCr29Mo6
mechanical properties		
fatigue strength	ooo	ooo
stiffness/modulus of elasticity	oo	ooo
notch sensitivity	o	ooo
crack propagation	o	oo
abrasion	o	ooo
corrosion characteristics		
passive layer	ooo	ooo
re-passivation	ooo	oo
fretting corrosion	o	ooo
crevice corrosion	ooo	oo
allergic potential	ooo	o

abrasion-resistant cleaning rods are supplied together with the implants.

Conclusions

The change of the material of the adapter from titanium alloy to a cobalt-based alloy (CoCr29Mo6) increases the safety of the cone connection significantly. The combination of the cobalt-based alloy and the titanium alloy of the shaft shows a considerably higher rigidity. The smaller micro-movements reduce abrasion. Furthermore, the highly stable passive layer of the cobalt-based alloy provides an improved resistance against fretting. Due to its structure, the cobalt alloy has a much lower notch sensitivity compared to the titanium alloy. This enhances fatigue strength.

Among patients treated with the titanium alloy neck adapter, a combination of different parameters was identified as risk factors of implant failure. The parameters are intraoperative particle contamination of the cone connection, excessive loading due to a patient weight above 100 kg or high activity level, and male gender. In addition, the risk for failure rises with CCD angles of the cone adapter of 135° and smaller.

Acknowledgements

The authors would like to thank Elisa Hoenig, M.Sc. and Michael M. Morlock, Ph.D. for the examination of micromotions in the neck adapter/stem interface, Thomas Hermle, M.Sc., MBA for the performance of the survival-failure analysis and Christoph Schilling, M.Sc. for the statistical analysis of the in vitro tests.

Author details

¹Aesculap AG Research Development, Tuttlingen, Germany. ²Aesculap AG Clinical Science, Tuttlingen, Germany.

Authors' contributions

The authors TMG, TW, WB, HPK have made substantial contributions to conception and design, or acquisition of data, or analysis and interpretation

of data; 2) TMG, TW, WB, HPK have been involved in drafting the manuscript or revising it critically for important intellectual content; and 3) TMG, TW, WB, HPK have given final approval of the version to be published.

Competing interests

The authors TMG, TW, WB, HPK are all employees of Aesculap AG Tuttlingen, Germany

Received: 27 February 2009

Accepted: 4 January 2010 Published: 4 January 2010

References

1. Toni A, Paderni S, Sudanese A, Guerra E, Traina F, Antonietti B, Giunti A: **Anatomic cementless total hip arthroplasty with ceramic bearings and modular necks: 3 to 5 years follow-up.** *Hip International* 2001, **11**(1):1-17.
2. Traina F, Baleani M, Viceconti M, Toni A: **Modular Neck Primary Prosthesis: Experimental and Clinical Outcomes.** *Scientific Exhibit at the 71st AAOS Annual Meeting, San Francisco* 2004.
3. Toni A, Sudanese A, Paderni S, Guerra E, Bianchi G, Antonietti B, Giunti A: **Artroprotesi d'anca non cementata con collo modulare - Cementless hip arthroplasty with a modular neck.** *Chir Organi Mov* 2001, **LXXXVI**:73-85.
4. Braun A, Lazovic D, Zigan R: **Modular short stem prosthesis- Implant positioning and the impact of navigation.** *Orthopedics Suppl* 2007, **30**(Suppl 10):144-147.
5. Keggi KJ: **My experience with proximal modular stems.** *Symposium "Cutting-edge developments on proximal modularity in THA" Annual AAHS Meeting* 2008, 16-22.
6. Keggi KJ, Kennon RE, Keggi JM: **Hip reconstruction - primary total hip arthroplasty with modular stems.** *Current Orthopaedic Practice* 2008, **19**(2):124-126.
7. Cameron HU, Leslie CJ, McTighe T: **Design considerations and results for a modular neck in cemented THA.** *Abstract, Australian Orthopaedic Association 67th Annual Scientific Meeting* 2007.
8. Hermle T, Zeller R, Grupp TM, Blömer W: **Metha short stem hip prosthesis - Examination of the modular cone connection.** *Springer Medizin Verlag, Heidelberg, implant* 2007, **1/07**: 12-17.
9. Bobyn JD, Tanzer M, Krygier JJ, Dujovne AR, Brooks CE: **Concerns with modularity in total hip arthroplasty.** *Clin Orth Rel Res* 1994, **298**: 27-38.
10. Brown SA, Flemming CA, Kawalec JS, Placko HE, Vassaux C, Merritt K, Payer JH, Kraay MJ: **Fretting corrosion accelerates crevice corrosion of modular hip tapers.** *J Appl Biomater* 1995, **6**(1):19-26.
11. Lieberman JR, Rimnac CM, Garvin KL, Klein RW, Salvati EA: **An analysis of the head-neck taper interface in retrieved hip prostheses.** *Clin Orth Rel Res* 1994, **300**: 162-167.
12. Gilbert JL, Buckley CA, Jacobs JJ: **In vivo corrosion of modular hip prosthesis components in mixed and similar metal combinations. The effect of crevice, stress, motion, and alloy coupling.** *Journal of Biomedical Materials Research* 1993, **27**:1533-1544.
13. Goldberg JR, Gilbert JL, Jacobs JJ, Bauer TW, Paprosky W, Leurgans S: **A multicenter retrieval study of the taper interfaces of modular hip prostheses.** *Clin Orth Rel Res* 2002, **401**: 149-161.
14. Windler M: **Korrosionsverhalten von modularen Verbindungen bei Hüftprothesen.** *Dissertation Eidgenössisch Technische Hochschule Zürich* No. 15284 2003.
15. Collier JP, Surprenant VA, Jensen RE, Mayor MB: **Corrosion at the interface of cobalt-alloy heads on titanium-alloy stems.** *Clin Orth Rel Res* 1991, **271**: 305-312.
16. McKellop H, Sarmiento A, Brien W, Park SH: **Interface corrosion of a modular head total hip prosthesis.** *J Arthroplasty* 1992, **7**(3):291-294.
17. Jacobs JJ, Gilbert JL, Urban RM: **Current concepts review - Corrosion of metal orthopaedic implants.** *J Bone Joint Surg [Am]* 1998, **80-A**:268-282.
18. Hoenig E, Morlock MM: **"Bestimmung der Relativbewegung an der Konusverbindung der modularen Metha-Kurzschafthprothese". Study to determine the relative motion between the neck adapter and the stem** *Biomechanics Section - Hamburg University of Technology, Aesculap test report* No. V1039 2008.
19. Hoenig E, Morlock MM: **Estimation of the relative motion in the taper lock interface of a modular hip prosthesis.** *Abstract Orthopedic Research Society, Las Vegas, Nevada* 2009.

20. Kaesche H: **Die Korrosion der Metalle - Physikalisch-chemische Prinzipien und aktuelle Probleme.** Springer-Verlag Berlin Heidelberg New York 1979, 274-276.
21. Gilbert JL, Jacobs JJ: **The mechanical and electrochemical processes associated with taper fretting crevice corrosion - a review.** *Modularity of orthopedic implants, ASTM STP 1301* J ASTM International Parr JE, Mayor MB 1997, 45-59.
22. Urban RM, Gilbert JL, Jacobs JJ: **Corrosion of modular titanium alloy stems in cementless hip replacement.** *J ASTM International* 2005, **2(10)**:1-10.
23. Rodrigues DC, Urban RM, Jacobs JJ, Gilbert JL: **In vivo severe corrosion and hydrogen embrittlement of retrieved modular body titanium alloy hip-implants.** *J Biomed Mater Res Part B Appl Biomater* 2009, **88B(1)**:206-219.
24. Collier JP, Surprenant VA, Jensen RE, Mayor MB, Surprenant HP: **Corrosion between the components of modular femoral hip prostheses.** *J Bone Joint Surg [Br]* 1992, **74-B**:511-517.
25. Cook SD, Barrack RL, Baffes GC, Clemow AJT, Serekian P, Dong N, Kester MA: **Wear and corrosion of modular interfaces in total hip replacements.** *Clin Orth Rel Res* 1994, , **298**: 80-88.
26. Goldberg JR, Buckley CA, Jacobs JJ, Gilbert JL: **Corrosion testing of modular hip implants.** *Modularity of orthopedic implants, ASTM STP 1301* J ASTM International Parr JE, Mayor MB 1997, 157-176.
27. Goldberg JR, Gilbert JL: **In vitro corrosion testing of modular hip tapers.** *J Biomed Mater Res Part B: Appl Biomater* 2003, **64B**:78-93.
28. Duisabeau L, Combrade P, Forest B: **Environmental effect on fretting of metallic materials for orthopaedic implants.** *Wear* 2004, **256**:805-816.
29. Hoepfner DW, Gates FL: **Fretting Fatigue Consideration in Engineering Design.** *Wear.* 1981, **70**:155-164.
30. Viceconti M, Baleani M, Squarzoni S, Toni A: **Fretting wear in modular neck hip prosthesis.** *Journal of Biomedical Materials Research* 1997, **35**:207-216.
31. Viceconti M, Ruggeri O, Toni A, Giunti A: **Design-related fretting wear in modular neck hip prosthesis.** *Journal of Biomedical Materials Research* 1996, **30**:181-186.
32. Hoepfner DW, Chandrasekaran V: **Fretting in orthopaedic implants: a review.** *Wear.* 1994, **173**:189-197.
33. Martinez SA, Sathish S, Mall S, Blodgett MP: **Evolution of fretting fatigue damage and relaxation of residual stress in shot-peened Ti6Al4V.** *Metallurgical and Materials Trans A* 2005, **36A**:3385-3396.
34. Forschungskuratorium Maschinenbau EV: **Reibkorrosion - Vorhaben Nr. 6.** *Maschinenbau-Verlag GmbH, 6000 Frankfurt/M, Forschungsheft* 1976, , **56**: 110-113.

Pre-publication history

The pre-publication history for this paper can be accessed here:<http://www.biomedcentral.com/1471-2474/11/3/prepub>

doi:10.1186/1471-2474-11-3

Cite this article as: Grupp et al.: Modular titanium alloy neck adapter failures in hip replacement - failure mode analysis and influence of implant material. *BMC Musculoskeletal Disorders* 2010 **11**:3.

Submit your next manuscript to BioMed Central and take full advantage of:

- Convenient online submission
- Thorough peer review
- No space constraints or color figure charges
- Immediate publication on acceptance
- Inclusion in PubMed, CAS, Scopus and Google Scholar
- Research which is freely available for redistribution

Submit your manuscript at
www.biomedcentral.com/submit

