

Phase I/II and Phase II Studies of Targeted Gene Delivery *In Vivo*: Intravenous Rexin-G for Chemotherapy-resistant Sarcoma and Osteosarcoma

Sant P Chawla¹, Victoria S Chua¹, Lita Fernandez¹, Doris Quon¹, Andreh Saralou¹, William C Blackwelder^{2,3}, Frederick L Hall⁴ and Erlinda M Gordon⁴

¹The Sarcoma Oncology Center, Santa Monica, California, USA; ²Biologics Consulting Group, Alexandria, Virginia, USA; ³Center for Vaccine Development, University of Maryland School of Medicine, Baltimore, Maryland, USA; ⁴Epeius Biotechnologies Corporation, San Marino, California, USA

Rexin-G, a pathotropic nanoparticle bearing a cytotoxic cyclin G1 construct was tested in a phase I/II study for chemotherapy-resistant sarcomas and a phase II study for chemotherapy-resistant osteosarcoma. Twenty sarcoma patients and 22 osteosarcoma patients received escalating doses of Rexin-G intravenously from 8×10^{11} to 24×10^{11} colony forming units (cfu)/cycle. Treatment was continued if there was \leq grade 1 toxicity. No dose-limiting toxicity (DLT) was observed, and no vector DNA integration, replication-competent retrovirus (RCR) or vector-neutralizing antibodies were noted. In the phase I/II study, 3/6 patients had stable disease (SD) at the lowest dose; median progression-free survival (PFS) was 1.2 months, and overall survival (OS), 3.3 months. At higher doses, 10/14 patients had SD; median PFS was 3.7 months and median OS, 7.8 months. In this phase I/II study, a dose-response relationship with Rexin-G dosage was observed for progression-free and OS times ($P = 0.02$ and 0.005 , respectively). In the phase II study, 10/17 evaluable patients had SD, median PFS was ≥ 3 months and median OS, 6.9 months. These studies suggest that Rexin-G is safe, may help control tumor growth, and may possibly improve survival in chemotherapy-resistant sarcoma and osteosarcoma.

Received 17 February 2009; accepted 4 May 2009; published online 16 June 2009. doi:10.1038/mt.2009.126

INTRODUCTION

Osteosarcoma is a rare malignant tumor of bone usually affecting adolescents and young adults.¹ Current combination chemotherapy, radiation therapy, and surgery, have significantly improved the survival of affected persons. Effective drugs include doxorubicin, cisplatin, methotrexate, and ifosfamide.² However, no standard second line therapy exists for those who relapse or fail to achieve a second remission with the best reported overall survival (OS) of 0.6 years.³ Additionally, the long-term sequelae and secondary malignancies associated with toxic chemotherapy in children and adolescents augment the need for more effective and less toxic therapies.³

Soft tissue sarcoma is also a rare cancer of mesenchymal tissues.⁴ Current treatment for soft tissue sarcoma includes surgical resection, radiotherapy, and chemotherapy.⁵ Despite improvements in the control of local disease, a significant number of patients ultimately die of metastatic disease following radical surgery due to a lack of effective adjuvant treatments.^{6–10} Only three drugs—doxorubicin, dacarbazine, and ifosfamide—are consistently associated with response rates of $\geq 20\%$, and after failure of these drugs, patients with advanced soft tissue sarcoma have few therapeutic options.¹¹

Among the leading alternatives to traditional chemotherapeutics, both cancer immunotherapy and cancer gene therapy strategies are currently under active clinical investigation.^{12–14} Rexin-G, the first and, so far, only targeted gene therapy vector bearing a cytotoxic dominant negative cyclin G1 construct,¹⁵ is currently being tested simultaneously in three phase I/II clinical trials for chemotherapy-resistant metastatic sarcoma, pancreatic cancer, and breast cancer, and in one phase II study for chemotherapy-resistant metastatic osteosarcoma in the United States.

In this article, we report on the results of two independent studies (i) evaluating the overall safety and potential efficacy of Rexin-G in chemotherapy-resistant sarcoma in a phase I/II study, and (ii) confirming the efficacy and overall safety of Rexin-G in chemotherapy-resistant osteosarcoma in a phase II study.

RESULTS

Patient demographics

Table 1 shows the patient demographics for the phase I/II sarcoma study and the phase II osteosarcoma study. There were nine different types of sarcomas enrolled in the phase I/II study, including leiomyosarcoma ($n = 5$), osteosarcoma ($n = 3$), synovial cell sarcoma ($n = 3$), liposarcoma ($n = 3$), mixed malignant Mullerian tumor of ovary ($n = 2$), Ewing's sarcoma ($n = 1$), chondrosarcoma ($n = 1$), malignant fibrous histiocytoma ($n = 1$), and malignant spindle cell sarcoma ($n = 1$). Ninety-five percent of patients in the phase I/II sarcoma study had metastatic disease and a median of four previous chemotherapy regimens, whereas 100% of patients in the phase II osteosarcoma study had metastatic disease and a median of four previous chemotherapy regimens. Eastern Cooperative

Correspondence: Sant P Chawla, 2811 Wilshire Boulevard, Suite 414, Santa Monica, California 90403, USA. E-mail: santchawla@aol.com

Table 1 Patient demographics

Phase I/II sarcoma study (n = 20)	
Age, years	
Median	50.5
Range	(15.0–70.0)
Gender	
Female	8 (40%)
Male	12 (60%)
Race	
White	15 (75%)
Black	1 (5%)
Hispanic	3 (15%)
Asian	1 (5%)
Disease stage	
Metastatic	19 (95%)
Nonmetastatic	1 (5%)
Performance score	
1	20 (100%)
No. of previous chemotherapy regimens	
Median	4
Range	1–10
Phase II osteosarcoma study (n = 22)	
Age, years	
Median	33
Range	(7.0–68.0)
Gender	
Female	5 (23%)
Male	17 (77%)
Race	
White	9 (41%)
Black	4 (18%)
Hispanic	7 (32%)
Asian	1 (4.5%)
Others	1 (4.5%)
Disease stage	
Metastatic	22 (100%)
Performance score	
1	22 (100%)
No. of previous chemotherapy regimens	
Median	4
Range	1–9

Oncology Group score was 0–1. **Table 2** shows the performance scoring system employed.

Analysis of safety

Treatment-related adverse events are listed in **Table 3**. There was no dose-limiting toxicity (DLT) or organ-related toxicity. In the phase I/II study, at dose level 0, study drug-related adverse events included grade 1 chills in one patient, and grade 1–2 fatigue in

Table 2 Eastern Cooperative Oncology Group performance scoring system

Description	Score
Fully active, able to carry on all predisease performance without restriction.	0
Restricted in physically strenuous activity but ambulatory and able to carry out work of a light or sedentary nature, e.g., light housework, office work.	1
Ambulatory and capable of all self care but unable to carry out any work activities. Up and about >50% of waking hours.	2
Capable of only limited self care, confined to bed or chair >50% of waking hours.	3
Completely disabled. Cannot carry on any self care. Totally confined to bed or chair.	4

Table 3 Treatment-related adverse events

Dose level (n)	Adverse event	No. of patients with grade 1 toxicity	No. of patients with grade 2 toxicity
Phase I/II sarcoma study			
0 (6)	Chills	1	—
	Fatigue	1	1
I–II (14)	Presyncope	1	—
Phase II osteosarcoma study			
I–II (22)	Photophobia	1	—
	Fatigue	2	—

two patients, whereas at dose level I–II, one patient had grade 1 presyncope. In the phase II study, one patient experienced grade 1 photophobia, and two patients had grade 1 fatigue which was considered possibly study drug-related.

Correlative analysis showed no neutralizing antibodies detected in the patients' sera. However, 3/14 patients who received dose level II developed weakly positive antibodies against the gp70 *envelope* protein by western blot analysis, 3–4 months after treatment initiation. Further, all DNA samples from patients' peripheral blood lymphocytes (PBLs) were found to be negative for replication-competent retrovirus (RCR), and no vector DNA integration was detected.

Analysis of efficacy

In the phase I/II study, six patients were treated at dose level I and 14 patients at dose level I–II (combined). **Table 4** (Sarcoma study) shows the tumor responses using standard response evaluation criteria in solid tumors (RECIST), International positron emission tomography (PET), and CHOI criteria for each dose level.

In the phase I/II sarcoma study, at dose level 0, 3/6 patients had stable disease (SD) whereas at dose level I–II, 10/14 patients had SD by standard RECIST criteria. Interestingly, using the International PET criteria, at dose level 0, 1/6 patients had a partial response (PR), and 4/6 patients had SD, and at dose level I–II, 4/14 patients had PRs, and 9/14 patients had SD. Similarly, using CHOI criteria, at dose level 0, 2/6 patients had PRs, and 4/6 patients had SD, and at dose level I–II, 7/14 patients had PRs and 7/14 patients had SD. These findings suggest that the International

Table 4 Effects of Rexin-G on tumor response by RECIST, PET, and CHOI criteria, on PFS and OS

Dose level (n)	Tumor response by RECIST	Tumor response by PET	Tumor response by CHOI	Median PFS by RECIST (months)	Median OS (months)
Phase I/II sarcoma study					
0 (6) 1×10^{11} cfu two times a week	3 SD, 3PD	1 PR, 4 SD, 1 PD	2 PR, 4 SD	1.2	3.3
I–II (14) $1\text{--}2 \times 10^{11}$ cfu three times a week	10 SD, 4 PD	4 PR, 9 SD, 1 PD	7 PR, 7S D	3.7	7.8
Phase II osteosarcoma study					
(17) 2×10^{11} cfu three times a week	10 SD, 7 PD	4 PR, 8 SD, 5 PD	3 PR, 12 SD, 2 PD	≥ 3	6.9 ^a

Abbreviations: OS, overall survival; PD, progressive disease; PET, positron emission tomography; PFS, progression-free survival; RECIST, response evaluation criteria in solid tumors; SD, stable disease.

^a22 Osteosarcoma patients were started on Rexin-G, 5 of whom had <1 treatment cycle or did not return for evaluation; all 5 of these patients died within 2 months of starting Rexin-G therapy. Median OS is shown for the 17 evaluable patients; median OS for all 22 enrolled patients was 6.0 months.

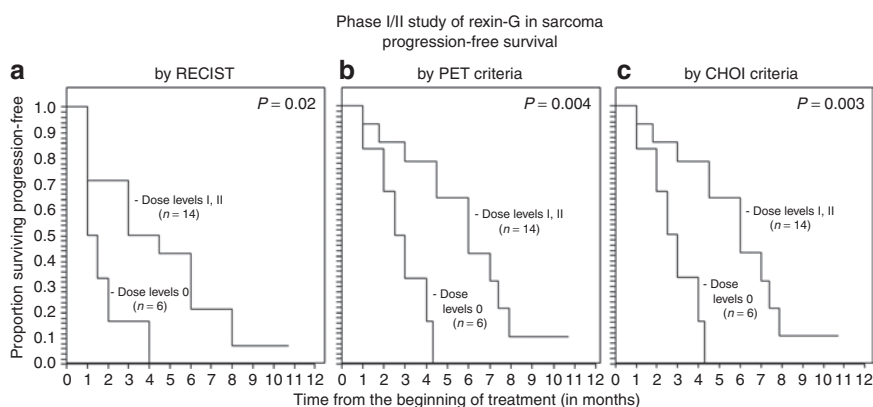


Figure 1 Analyses of progression-free survival (PFS) of patients in the phase I/II sarcoma study using various radiologic imaging criteria. Kaplan-Meier analyses show a dose–response relationship between progression-free survival and Rexin-G dosage, as determined (a) by RECIST, (b) by International PET criteria, and (c) by CHOI criteria.

PET and CHOI criteria may be more sensitive indicators of tumor responses to Rexin-G treatment than the standard RECIST.

The median progression-free survival (PFS) times by RECIST was 1.2 months for dose level 0 versus 3.7 months for dose levels I–II (combined), and the corresponding median overall survival times were 3.3 months for dose level 0 versus 7.8 months for dose levels I–II (Table 4). Using the Cox regression model and Kaplan–Meier analysis,¹⁶ a dose–response relationship was observed between Rexin-G dosage and both PFS and OS ($P = 0.02$ for PFS by RECIST, 0.004 by PET and 0.003 by CHOI criteria; $P = 0.005$ for OS; Figures 1a–c and 2a).

In the phase II study, 17 of 22 patients completed at least one treatment cycle and were considered evaluable. Five patients were taken off study without completing one treatment cycle due to disease-related complications or a personal decision to discontinue participation and return home. The tumor responses based on RECIST, International PET criteria and CHOI criteria are shown in Table 4. Using standard RECIST, 10/17 (59%) evaluable patients had SD, whereas using International PET criteria, 4/17 patients had PRs, and 8/17 patients had SD, totaling 70% of patients having PRs or SD. Using CHOI criteria, 3/17 had PRs and 12/17 had SD totaling 88% of patients having PRs or SD. Therefore, tumor responses were significantly higher in the Rexin-G treated group compared to those expected of historical

controls (with $\leq 5\%$ having a positive response if untreated; $P < 0.025$).³ Median PFS was ≥ 3 months, and OS was 6.9 months (6 months for all 22 enrolled patients).

Two patients are disease-free after surgical resection of residual tumors, with three cycles of Rexin-G given before and 3–4 cycles after surgery. These patients enjoy sustained surgical remissions 10.7 and 9.7 months after treatment initiation, and >6 months after surgery. In one patient, histopathologic examination of two resected tumor nodules showed a 2.5 cystic nodule and rare osteosarcoma cells and a 0.9 cm calcified nodule and residual osteosarcoma cells with rare mitosis (Figure 3). Of note, the 2.5 cm tumor had increased in size and was diagnosed as progressive disease (PD) by RECIST but a PR by PET criteria. This finding suggests that RECIST criteria may not be a reliable indicator of tumor response to Rexin-G treatment in osteosarcoma.

DISCUSSION

Rexin-G is a pathotropic nanoparticle incorporating a collagen-matrix binding motif on its surface and bearing a dominant negative cyclin G1 construct as its genetic payload. When injected intravenously, Rexin-G accumulates in cancerous lesions wherein collagen is exposed by tumor invasion, neoangiogenesis or extracellular remodeling, thus increasing the effective local concentration in tumors in the vicinity of target cancer cells. Rexin-G

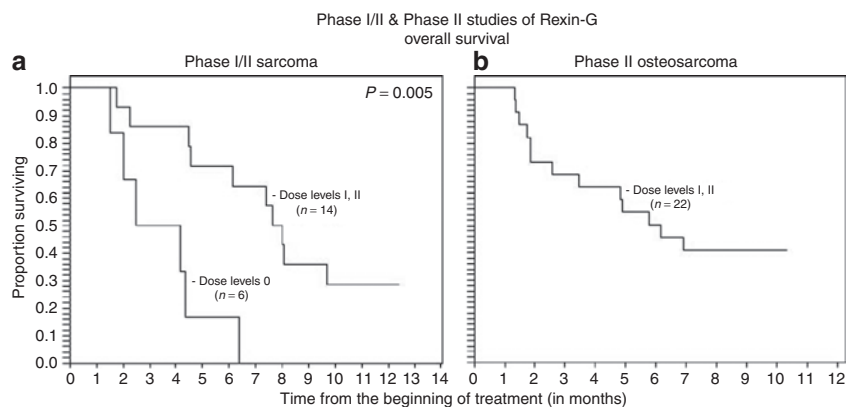


Figure 2 Analyses of overall survival of patients in the phase I/II sarcoma study and the phase II osteosarcoma study. Kaplan-Meier analyses show the survival curves of patients in (a) the phase I/II sarcoma study and (b) the phase II osteosarcoma study.

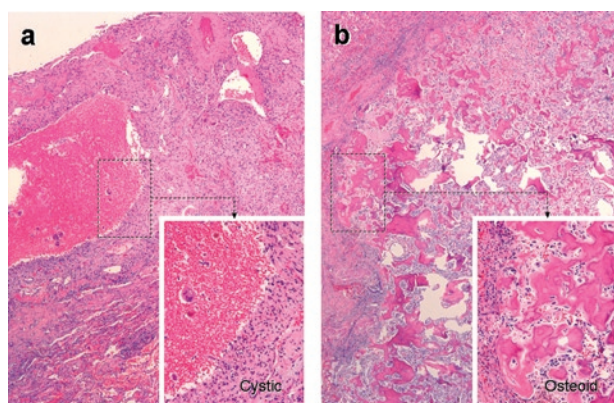


Figure 3 Histopathological findings in the lung metastases of a patient with chemotherapy-resistant osteosarcoma after Rexin-G treatment. Representative H&E stained tissue sections from resected residual lung nodules in a Rexin-G treated patient. (a) 2.5 cm cystic mass with organized clot and rare osteosarcoma cells; (b) 0.9 cm calcified tumor mass with reparative fibrosis, immune infiltrate and osteosarcoma cells with rare mitosis.

causes cell death by blocking the cell cycle in G1 phase and inducing apoptosis of proliferative cancer cells and associated neovasculature in preclinical studies.^{17,18}

In the phase I/II sarcoma study, tumor control was suggested by longer PFS and OS in the higher dose cohorts compared to the low dose cohort. In the phase II osteosarcoma study, a significant proportion of patients had SD by RECIST or PRs/SD by PET and CHOI criteria, suggesting increased sensitivity of PET and CHOI criteria for early detection of tumor responses to Rexin-G treatment. No DLT or organ-related toxicity was observed with prolonged use of Rexin-G. Correlative analysis showed no vector-neutralizing antibodies detected in serum, and no evidence of vector DNA integration nor RCR in PBLs, further attesting to the overall safety of Rexin-G. Surgical resection of residual tumors following Rexin-G treatment—which enabled histological examination, as well as strategic tumor debulking—followed by the administration of additional postoperative treatment, serves to underscore the potential clinical benefit of Rexin-G in neoadjuvant/adjuvant protocols.

In conclusion, the objectives of the phase I/II Study have been met. The overall safety of Rexin-G administered within the

defined dose ranges was clearly established by the absence of DLT or vector safety concerns. Further, the objectives of the phase II study for osteosarcoma have also been met, wherein tumor responses by RECIST of 10 SD of 17 evaluable patients (59%; 95% confidence interval, 33–82%) and a median PFS of ≥ 3 months and a median OS of 6.9 months in patients treated with at least 1 cycle, and 6 months in all enrolled patients, were demonstrated. Taken together, the results of these two independent well-defined phase I/II and phase II studies suggest that Rexin-G may help control tumor growth, and may possibly improve progression-free and OS times in chemotherapy-resistant sarcoma and osteosarcoma, thus hopefully providing the required elements for consideration of accelerated approval for osteosarcoma by the US Food and Drug Administration.^{19,20}

MATERIALS AND METHODS

Study design. The phase I/II sarcoma study employed a modified cohort of three design.²¹ Three patients were treated at each dose level with expansion to six patients per cohort if DLT was observed in one of the three first patients at each dose level. Each cohort was also expanded to six or seven patients if significant biologic activity was noted. Maximum tolerated dose was defined as the highest safely tolerated dose, where ≤ 1 patient experienced DLT, with the next higher dose level having at least two patients who experienced DLT. DLT was defined as any grade 3, 4, or 5 adverse event considered possibly, probably, or definitely related to the study drug, excluding grade 3 absolute neutrophil count lasting < 72 hours, grade 3 alopecia, or any grade 3 or worse nausea, vomiting, or diarrhea where the patient did not receive maximal supportive care.²²

Adaptive Trial Design: A phase II efficacy component was incorporated in the phase I/II sarcoma study by allowing additional treatment cycles to be given if the patient had \leq grade 1 toxicity. Further, across the board dose escalation was allowed by the Food and Drug Administration when the safety of preceding dose levels had been documented. The principal investigator, S.P.C., was also allowed to recommend surgical resection/debulking after at least one treatment cycle had been administered.

For the phase II osteosarcoma study, the optimal dose was derived from the results of the phase I/II sarcoma study. The number of patients enrolled was deduced from a statistical projection of 25% of patients achieving SD or better by International PET criteria and/or RECIST, assuming that $\geq 95\%$ of patients with chemo-resistant osteosarcoma will progress if untreated.³ Clinical toxicity was also reported according to severity and relatedness to the study drug.

Clinical objectives/endpoints. The primary objective of the phase I/II study for sarcoma is to determine the clinical toxicity of escalating doses of Rexin-G as defined by patient performance status, toxicity assessment score, hematologic, and metabolic profiles. The secondary objectives include (i) evaluation of the potential of Rexin-G for evoking an immune response, recombination events and/or unwanted vector integration in nontarget organs, and (ii) identification of an antitumor response to Rexin-G.

The primary objective of the phase II study for osteosarcoma is to confirm the efficacy of Rexin-G in terms of tumor responses (complete response (CR), PR, or SD) by International PET criteria and by RECIST. A favorable tumor response was recorded if the patient had a CR, PR, or SD. The secondary objectives are (i) to confirm the efficacy of Rexin-G in terms of a median PFS of ≥ 1 month and a median OS of ≥ 6 months, and (ii) to evaluate the safety/toxicity of continued use of Rexin-G and the potential of Rexin-G for evoking an immune response, recombination events and/or unwanted vector integration in nontarget organs (PBLs).

Patient population. The phase I/II study included patients with a pathologic diagnosis of sarcoma who were refractory to standard chemotherapy, and the phase II study, patients with recurrent or metastatic osteosarcoma who were considered refractory to known therapies. Histologic or cytologic confirmation at diagnosis or recurrence was required. Inclusion criteria consisted of an Eastern Cooperative Oncology Group performance score of 0–1 and adequate hematologic, hepatic, and kidney function. Exclusion criteria included human immunodeficiency virus, hepatitis B virus, or hepatitis C virus positivity, clinically significant ascites, medical, or psychiatric conditions that could compromise successful adherence to the protocol, and unwillingness to employ effective contraception during treatment with Rexin-G and for 6 weeks following treatment completion. The clinical protocols (C07-103 and C07-110) were reviewed and approved by the Western Institutional Review Board, Olympia WA 98502 and the Biosafety Committee of Epeius Clinical Research Unit, San Marino CA 91108.

Patient recruitment and assignment. The phase I/II and phase II studies using Rexin-G for sarcoma and osteosarcoma were registered on www.clinicaltrials.gov (NCT00505713 and NCT00572130, respectively) within 1 week of study initiation, and patients were recruited on a first come first served basis after appropriate screening procedures were conducted. Written informed consent, in accordance with the Declaration of Helsinki protocols, was obtained from each patient at the time of enrollment. The phase I/II sarcoma study is an open label study using escalating doses of Rexin-G. Six patients were enrolled at dose level 0 followed by a dose escalation in seven patients at dose level I and another seven patients at dose level II when safety/toxicity data in at least three patients at lower dose levels had been recorded and no DLT was encountered. The phase II osteosarcoma study enrolled 22 patients at dose level II. **Table 1** shows the demographics of all enrolled patients.

Treatment. Rexin-G is a nonreplicative “pathotropic” (pathology-targeted) retroviral vector bearing a collagen-binding motif on its envelope protein²³ and encoding an N-terminal deletion mutant construct of human cyclin G1²⁴ under the control of the moloney murine leukemia virus long terminal repeat promoter. The Rexin-G vector is produced by transient cotransfection of three separate plasmids in 293T cells (human kidney 293 cells transformed with the SV40 large T antigen) maintained as a fully validated master cell bank.^{17,25,26} The final product exhibits a viral titer of 5×10^9 colony forming units (cfu) per milliliter, a biologic potency of 50–70% growth inhibitory activity in A375 melanoma cells, <550bp residual DNA, no detectable E1A or SV40 large T antigen, and no detectable RCR.²⁷ The clinical vector is stored in volumes of 23 ml in 30 ml vials or 40 ml in 150 ml cryobags in a $-80 \pm 10^\circ\text{C}$ freezer marked Biohazard. Preparation of the Rexin-G vector for patient administration consisted of rapid thawing of the vector in the vial or cryobag in a 34°C waterbath. The vector was thawed 15–30 minutes prior to infusion into the patient, and was infused

within 1 hour of thawing, intravenously over 5–10 minutes or at 4 ml/min. All personnel who handled and disposed of the vector observed Biosafety Level 2 compliance in accordance with the National Institutes of Health Guidelines for Research Involving Recombinant DNA molecules.

The phase I/II sarcoma study enrolled 20 patients who received escalating doses of Rexin-G. Briefly, each treatment cycle was 6 weeks, consisting of 4 weeks treatment and 2 weeks rest period. The following two dose levels were employed: dose level 0 = 1×10^{11} cfu two times a week for 4 weeks (cumulative dose per cycle: 8×10^{11} cfu); dose level I = 1×10^{11} cfu three times a week for 4 weeks (cumulative dose per cycle: 12×10^{11} cfu); and dose level II = 2×10^{11} cfu three times a week (cumulative dose per cycle: 24×10^{11} cfu). The treatment cycles were repeated if the patient had grade 1 or less toxicity.

The phase II osteosarcoma study enrolled 22 patients who received dose level II or 2×10^{11} cfu three times a week for 4 weeks (cumulative dose per cycle: 24×10^{11} cfu), considered an optimal dose of Rexin-G for sarcoma. Some patients were started at 1×10^{11} cfu three times a week but the dose was eventually escalated to dose level II when safety at dose level I was documented in the phase I/II sarcoma study. The treatment cycles were repeated if the patient had grade 1 or less toxicity.

Safety and efficacy evaluation. Pretreatment evaluation included history, physical exam, complete blood count with differential and platelet count, serum chemistry panel including aspartate aminotransferase, alanine aminotransferase, alkaline phosphatase, creatinine, and total bilirubin, assessment of coagulation including prothrombin time, international normalized ratio, and activated partial thromboplastin time, testing for human immunodeficiency virus, hepatitis B virus, and hepatitis C virus, imaging evaluation to include a whole body fludeoxyglucose/PET computed tomography (CT) scan, electrocardiogram and chest X-ray. All patients had a complete blood count and serum chemistry panel performed weekly during treatment.

Safety analysis. Toxicity was assessed before and after each vector infusion, and before beginning an additional treatment cycle. Patients had serum collected for vector antibody detection and peripheral blood mononuclear cells collected for assessment of vector DNA integration and RCR at the end of 4 weeks, at 6 weeks or before the start of a treatment cycle.

Toxicity was graded using the National Cancer Institute Common Terminology Criteria Version 3.0.²² Overall evaluation of safety/toxicity was conducted by the principal investigator and associate (S.P.C. and V.S.C., respectively).

Correlative analysis. Correlative laboratory analysis was performed in the Epeius Biotechnologies Quality Control Unit, using standard operating procedures in compliance with good laboratory practices.²⁸

Detection of antivector antibodies in patients' serum: Testing for the presence of antivector antibodies was performed on serum samples obtained preinfusion and at 4 weeks and thereafter, at 6 weeks following treatment initiation or before each treatment cycle.

Vector neutralization assay: A375 cells (ATCC, Manassas, VA), a human amelanotic melanoma cancer cell line, are incubated in 12-well plates, at a plating density of 0.8×10^4 cells per well, in Dulbecco's modified Eagle's medium supplemented with 10% fetal bovine serum (D10). After overnight attachment, the cells are exposed to 1 ml of a mixture of Rexin-G vector and patient's pre and post-treatment serum, fetal bovine serum and D10 (as controls) in the presence of Polybrene (8 $\mu\text{g/ml}$) for 2 hours at 37°C , 5% CO_2 , with periodic rocking. Then, 1 ml fresh D10 is added, and the cultures are further incubated at 37°C , 5% CO_2 . The medium is replaced with 1 ml fresh D10 the next day. To assess the dominant negative cyclin G gene product potency of the Rexin-G vector, the transduced cells are evaluated for their reduced proliferative potential by counting the number of viable cells in triplicate cultures at

serial intervals (4 and 5 days) after transduction. This is our standard vector growth inhibition assay calculated as follows:

$$\% \text{ Vector inhibitory activity (vector + D10)} = \frac{\text{No. of cells (D10)} - \text{No. of cells (vector + D10)}}{\text{No. of cells (D10)}} \times 100$$

To obtain the vector inhibitory activity in serum-treated and control cultures, the mean cell numbers in cultures transduced with mixtures of vector + D10 were compared with vector + serum-treated cultures and expressed as % vector inhibitory activity, using the following formula:

$$\text{Serum \% vector inhibitory activity (vector + serum)} = \frac{\text{No. of cells (D10)} - \text{No. of cells (vector + serum)}}{\text{No. of cells (D10)}} \times 100$$

The presence of vector-neutralizing activity is detected by comparing the % inhibitory activity in mixtures of vector + D10 versus vector + serum using the following formula:

$$\% \text{ Vector-neutralizing activity} = \frac{\% \text{ inhibitory activity (vector + serum)} - \% \text{ inhibitory activity (patient baseline or fetal bovine serum)}}{\% \text{ inhibitory activity (vector + serum)}}$$

A negative value indicates a drop in inhibitory activity. When the value is ≤ 10 no vector neutralization has occurred, and >10 neutralization has occurred.

Testing for antibodies against the gp70 envelope protein: Detection of serum antibodies against gp70 is conducted by western slot blot analysis using gp70 containing Rexin-G retroviral vector as a polyacrylamide gel electrophoresis resolved capture antigen incubated with either serum from treated patients or positive control gp70 murine monoclonal antibody.³² The appearance of an immunoreactive band on the Rexin-G slot blot at 70 kDa (gp70) in slot lanes of patient's postinfusion serum indicates presence of patient postinfusion antibodies against the gp70 envelope protein.

Testing for the presence of RCR in patient PBLs: Testing for the presence of RCR was performed on DNA extracted from PBLs of treated patients, obtained at baseline (before vector infusion) and at the end of 4 weeks (after start of treatment). The assay was designed to detect the presence of RCR DNA sequences postvector infusion using PCR. In this study, real-time PCR with an iCycler, Master mix reagents and optimized moloney murine leukemia virus envelope primers is used to amplify a small portion of the 2001 bp moloney murine leukemia virus envelope gene (164 bp fragment from 411 to 574 bp) present in our Rexin-G retroviral vector. Serial tenfold dilutions of control moloney murine leukemia virus envelope plasmid bovine epitope-retroviral envelope DNA in the picogram to femtogram range is diluted into control samples of human genomic DNA to establish a standard curve down to the limit of detection of the assay. Syber green DNA intercalation dye is used as a probe to monitor the progress of increased DNA quantities generated in the PCR reaction. MyIQ software records the real-time PCR reaction data and subsequently calculates the standard curve as well as the value for test patient samples. The real-time PCR results for amplification of the moloney murine leukemia virus envelope gene from 3 μ g DNA (less if noted) patient lymphocyte genomic must be below the lowest result on the standard curve and or below preinfusion values to be considered "Negative" for RCR.

Vector DNA integration studies: Testing for presence of vector DNA integration was performed on DNA extracted from PBLs obtained preinfusion, 1 week, and at the end of 4 weeks or before the start of each treatment cycle. Testing for vector DNA integration in PBLs was performed by centrifuging patient blood samples in a CPT collection tube to separate white blood cells from RBCs and serum. White blood

cell DNA is isolated using a Qiagen blood DNA isolation kit, then quantified with a UV spectrophotometer. Real-time PCR with an iCycler, Master mix reagents and optimized Neo primers are used to amplify a small portion of the 795 bp Neomycin Phosphotransferase gene (75 bp fragment from 382 to 456 bp) present in our dnG1-Erex retroviral vector. Serial tenfold dilutions of Rexin-G retroviral vector control plasmid dnG1-Erex DNA in the pico to femtogram range is diluted into control human genomic DNA to establish a standard curve down to the limit of detection of the assay. Syber green DNA intercalation dye is used as a probe to monitor the progress of increased DNA quantities generated in the PCR reaction. MyIQ software records the real-time PCR reaction data and subsequently calculates the standard curve as well as the value for test patient samples. The real-time PCR results for amplification of the neomycin phosphotransferase gene from patient lymphocyte genomic DNA must fall below the lowest result on the standard curve and or below preinfusion values to be considered "Negative" for vector integration.

Efficacy analysis. Efficacy assessment with fludeoxyglucose PET/CT scan was also performed at the end of 4 weeks, and at the end of 6 weeks or before starting an additional treatment cycle up to 12 weeks, and every 12 weeks thereafter. All PET/CT images were performed and reviewed by independent radiologists of the Medical Imaging Center of Southern California, Santa Monica, who are experts at nuclear and PET imaging and who were blinded to the Rexin-G dose levels. Tumor response was evaluated using the standard National Cancer Institute RECIST criteria,²⁹ the International PET criteria,³⁰ and the CHOI criteria,³¹ according to Food and Drug Administration-approved protocols for tumor response assessment.

The modified International PET Criteria defines a CR as disappearance of fludeoxyglucose avid uptake in target and nontarget lesions with no new lesions; PR as a decrease in maximum standardized uptake value of $>25\%$ from baseline with no new lesions and no obvious progression of nontarget lesions; SD as not meeting the criteria for CR, PR or PD and no symptomatic deterioration attributed to tumor progression; and PD as an increase in maximum standardized uptake value of $>25\%$ from baseline, any new lesions, and obvious progression of nontarget lesions.³⁰

The modified CHOI Criteria defines CR as the disappearance of all disease and no new lesions; PR as a decrease in size of $\geq 10\%$ or a decrease in CT density (HU) $\geq 15\%$ with no new lesions and no obvious progression of nonmeasurable disease; SD as not meeting the criteria for CR, PR or PD and no symptomatic deterioration attributed to tumor progression; and PD as an increase in unidimensional tumor size of $>10\%$ and did not meet criteria for PR by CT density, any new lesions, including new tumor nodules in a previously cystic tumor.³¹

Overall evaluations of tumor responses, PFS and OS were conducted by the principal investigator and associate (S P C and V S C, respectively).

Statistical analysis. Frequency tables, graphs, and summary statistics were used to describe patient characteristics and outcome data for both phase I/II and phase II studies. Clinical data from 1 August, 2007 to 29 October, 2008 were analyzed. Kaplan-Meier methodology¹⁶ was used to describe graphically the distribution of OS. OS time was calculated in days and divided by 30.4 to convert to months. PFS time was approximated, using the times of patient evaluations. OS and PFS times were compared in groups of patients treated at different dose levels, using permutation tests on the logrank statistic with at least 10,000 replications. Tumor response data by different specific criteria (RECIST, PET or CHOI criteria) were reported. Reported *P*-values are two-sided, and *P* < 0.05 was considered statistically significant. Analysis was done using NCSS software (Number Cruncher Statistical Systems, Kaysville, Utah). Statistical analysis was performed by a biostatistician not otherwise involved in the study (W.C.B.).

ACKNOWLEDGMENTS

We are grateful to John P. Levy, Rebecca A. Reed, W. Nina Petchpud, and Liqiong Liu (Epeius Quality Control Unit) for quality control testing of product and patient samples, to Antonette C. Balais, R.N. and Jun de Guzman (Epeius Clinical Research Unit) for data management. S.P.C., principal investigator, V.S.C., L.F., A.S., and D.Q., who participated in the design, patient recruitment, conduct and evaluation of the clinical safety and efficacy of Rexin-G, and W.C.B, who performed the statistical analysis, have no conflict of interest. F.L.H and E.M.G, who designed the studies and conducted the correlative analysis are compensated employees of Epeius Biotechnologies Corporation. The studies were supported by Epeius Biotechnologies Corporation, San Marino, CA 91108.

REFERENCES

1. Surveillance, Epidemiology, and End Results (SEER) Program (2007). Prevalence database: "US estimated 29-year LD counts on prevalence on 1/1/2004 by duration" for Bones and Joints Cancer. National Cancer Institute, DCCPS, Surveillance Research Program, Statistical Research and Applications Branch, based on the November 2006 SEER data submission. <www.seer.cancer.gov>.
2. Longhi, A, Errani, C, De Paolis, M, Mercuri, M and Bacci, G (2006). Primary bone osteosarcoma in the pediatric age: state of the art. *Cancer Treat Rev* **32**: 423–436.
3. Kempf-Bielack, B, Bielack, SS, Jürgens, H, Branscheid, D, Berdel, WE, Exner, GU *et al.* (2005). Osteosarcoma relapse after combined modality therapy: an analysis of unselected patients in the Cooperative Osteosarcoma Study Group (COSS). *J Clin Oncol* **23**: 559–568.
4. Surveillance, Epidemiology, and End Results (SEER) Program (2007). Prevalence database: "US estimated 29-year LD counts on prevalence on 1/1/2004 by duration" for Soft Tissue including Heart Cancer. National Cancer Institute, DCCPS, Surveillance Research Program, Statistical Research and Applications Branch, based on the November 2006 SEER data submission. <www.seer.cancer.gov>.
5. Milano, A, Apice, G, Ferrari, E, Fazioli, F, de Rosa, V, de Luna, AS *et al.* (2006). New emerging drugs in soft tissue sarcoma. *Crit Rev Oncol Hematol* **59**: 74–84.
6. Mocellin, S, Rossi, CR, Brandes, A and Nitti, D (2006). Adult soft tissue sarcomas: conventional therapies and molecularly targeted approaches. *Cancer Treat Rev* **32**: 9–27.
7. Geer, RJ, Woodruff, J, Casper, ES and Brennan, MF (1992). Management of small soft-tissue sarcoma of the extremity in adults. *Arch Surg* **127**: 1285–1289.
8. Karakousis, CP and Zografos, GC (2002). Radiation therapy for high grade soft tissue sarcomas of the extremities treated with limb-preserving surgery. *Eur J Surg Oncol* **28**: 431–436.
9. Pisters, PW, Leung, DH, Woodruff, J, Shi, W and Brennan, MF (1996). Analysis of prognostic factors in 1,041 patients with localized soft tissue sarcomas of the extremities. *J Clin Oncol* **14**: 1679–1689.
10. Cormier, JN and Pollock, RE (2004). Soft tissue sarcomas. *CA Cancer J Clin* **54**: 94–109.
11. Demetri, GD (1998). Major developments in the understanding and treatment of soft-tissue sarcomas in adults. *Curr Opin Oncol* **10**: 343–347.
12. Meyers, PA, Schwartz, CL, Krailo, MD, Healey, JH, Bernstein, ML, Betcher, D *et al.* (2008). Osteosarcoma: the addition of muramyl tripeptide to chemotherapy improves overall survival—a report from the Children's Oncology Group. *J Clin Oncol* **26**: 633–638.
13. Mori, K, Rédini, F, Gouin, F, Cherrier, B and Heymann, D (2006). Osteosarcoma: current status of immunotherapy and future trends (Review). *Oncol Rep* **15**: 693–700.
14. Witlox, MA, Lamfers, ML, Wuisman, PI, Curiel, DT and Siegal, GP (2007). Evolving gene therapy approaches for osteosarcoma using viral vectors: review. *Bone* **40**: 797–812.
15. Waehler, R, Russell, SJ and Curiel, DT (2007). Engineering targeted viral vectors for gene therapy. *Nat Rev Genet* **8**: 573–587.
16. Kaplan, E and Meier, P (1958). Nonparametric estimation for incomplete observations. *J Am Stat Assoc* **53**: 457–481.
17. Skotzko, M, Wu, L, Anderson, WF, Gordon, EM and Hall, FL (1995). Retroviral vector-mediated gene transfer of antisense cyclin G1 (CYCG1) inhibits proliferation of human osteogenic sarcoma cells. *Cancer Res* **55**: 5493–5498.
18. Gordon, EM, Chen, ZH, Liu, L, Whitley, M, Liu, L, Wei, D *et al.* (2001). Systemic administration of a matrix-targeted retroviral vector is efficacious for cancer gene therapy in mice. *Hum Gene Ther* **12**: 193–204.
19. Oncologic "Threshold of Credibility" Paradigm being explored at FDA (2004): "The Pink Sheet" Prescription Pharmaceuticals and Biotechnology 66: p. 15.
20. Guidance for industry clinical trial endpoints for the approval of cancer drugs and biologics. DHHS, FDA, CDER, CBER, (2007): 1–19.
21. Storer, BE (1989). Design and analysis of phase I clinical trials. *Biometrics* **45**: 925–937.
22. The NCI Common Terminology Criteria for Adverse Events Version 3 (2003). Cancer Therapy Evaluation Program DCTD, NCI, NIH, DHHS, (<http://ctep.cancer.gov>): 1–72.
23. Hall, FL, Liu, L, Zhu, NL, Stapfer, M, Anderson, WF, Beart, RW *et al.* (2000). Molecular engineering of matrix-targeted retroviral vectors incorporating a surveillance function inherent in von Willebrand factor. *Hum Gene Ther* **11**: 983–993.
24. Xu, F, Prescott, MF, Liu, PX, Chen, ZH, Liaw, G, Gordon, EM *et al.* (2001). Long term inhibition of neointima formation in balloon-injured rat arteries by intraluminal instillation of a matrix-targeted retroviral vector bearing a cytotoxic mutant cyclin G1 construct. *Int J Mol Med* **8**: 19–30.
25. Gordon, EM, Cornelio, GH, Lorenzo, CC, Levy, JP, Reed, RA, Liu, L *et al.* (2004). First clinical experience using a 'pathotropic' injectable retroviral vector (Rexin-G) as intervention for stage IV pancreatic cancer. *Int J Oncol* **24**: 177–185.
26. Gordon, EM, Lopez, FF, Cornelio, GH, Lorenzo, CC, Levy, JP, Reed, RA *et al.* (2006). Pathotropic nanoparticles for cancer gene therapy Rexin-G IV: three-year clinical experience. *Int J Oncol* **29**: 1053–1064.
27. Guidance for Industry: Supplemental guidance on testing for replication competent retrovirus in retroviral vector based gene therapy products and during follow-up of patients in clinical trials using retroviral vectors (2006). UUSPHS, FDA, CBER: 1–13.
28. Galanis, E, Carlson, SK, Foster, NR, Lowe, V, Quevedo, F, McWilliams, RR *et al.* (2008). Phase I trial of a pathotropic retroviral vector expressing a cytotoxic cyclin G1 construct (Rexin-G) in patients with advanced pancreatic cancer. *Mol Ther* **16**: 979–984.
29. Therasse, P, Arbuck, SG, Eisenhauer, EA, Wanders, J, Kaplan, RS, Rubinstein, L *et al.* (2000). New guidelines to evaluate the response to treatment in solid tumors. European Organization for Research and Treatment of Cancer, National Cancer Institute of the United States, National Cancer Institute of Canada. *J Natl Cancer Inst* **92**: 205–216.
30. Young, H, Baum, R, Cremerius, U, Herholz, K, Hoekstra, O, Lammertsma, AA *et al.* (1999). Measurement of clinical and subclinical tumour response using [18F]-fluorodeoxyglucose and positron emission tomography: review and 1999 EORTC recommendations. European Organization for Research and Treatment of Cancer (EORTC) PET Study Group. *Eur J Cancer* **35**: 1773–1782.
31. Choi, H, Charnsangavej, C, Faria, SC, Macapinlac, HA, Burgess, MA, Patel, SR *et al.* (2007). Correlation of computed tomography and positron emission tomography in patients with metastatic gastrointestinal stromal tumor treated at a single institution with imatinib mesylate: proposal of new computed tomography response criteria. *J Clin Oncol* **25**: 1752–1759.
32. Tabata, N, Miyazawa, M, Fujisawa, R, Takeji, YA, Abe, H and Hashimoto, K (2000). Establishment of monoclonal anti-retroviral gp70 autoantibodies from MRL/lpr lupus mice and induction of glomerular gp70 deposition and pathology by transfer into non-autoimmune mice. *J Virol* **74**: 4116–4126.



This work is licensed under the Creative Commons Attribution-NonCommercial-No Derivative Works 3.0 License. To view a copy of this license, visit <http://creativecommons.org/licenses/by-nc-nd/3.0/>