

Impact of carbohydrate restriction with and without fatty acid loading on myocardial ^{18}F -FDG uptake during PET: A randomized controlled trial

Victor Y. Cheng, MD,^{a,b,c} Piotr J. Slomka, PhD,^{a,b,c} Marie Ahlen, MD, RD,^a Louise E. J. Thomson, MD,^{b,c} Alan D. Waxman, MD,^{b,c} and Daniel S. Berman, MD^{a,b,c}

Background. Low-carbohydrate (LC) and high-fat, low-carbohydrate (HFLC) dietary preparations may enhance ^{18}F -FDG-PET-based imaging of small, inflamed structures near the heart by suppressing myocardial FDG signal. We compared myocardial ^{18}F -FDG uptake in patients randomized to LC, HFLC, and unrestricted (UR) preparations prior to ^{18}F -FDG-PET.

Methods and Results. We randomized 63 outpatients referred for oncologic ^{18}F -FDG-PET to LC, HFLC, or UR dietary preparations (1:1:1 allocation) starting the evening before PET. After eating dinner according to instructions, UR and LC patients fasted until FDG injection (mean time 745 minutes for UR, 899 minutes for LC), and HFLC patients drank a fatty drink 60-70 minutes prior to FDG injection. Attenuation-corrected PET imaging was performed 60 minutes after FDG administration. Maximal myocardial standard uptake values ($\text{MyoSUV}_{\text{max}}$) were systematically measured in axial view and compared between the three groups. Using UR patients as reference, mean $\text{MyoSUV}_{\text{max}}$ was lower in LC patients (3.3 ± 2.7 vs 6.2 ± 5.2 , $P = .03$) but not in HFLC patients (5.5 ± 4.2 , $P = .63$). Ratios of $\text{MyoSUV}_{\text{max}}$ to liver SUV_{max} , calculated to control for background uptake, were not significantly different amongst the groups (1.9 ± 2.1 LC, 2.6 ± 2.3 HFLC, 3.6 ± 3.5 UR).

Conclusion. In this small randomized controlled trial using UR diet as reference, LC dietary preparation followed by extended fasting resulted in significant myocardial uptake suppression. (J Nucl Cardiol 2010;17:286-91.)

Key Words: Carbohydrates · diet · fatty acids · ^{18}F -FDG · myocardium · PET

INTRODUCTION

A major obstacle in using ^{18}F -FDG to image structures adjacent to the heart rests with the myocardium, which can significantly interfere with visualization by

exhibiting high FDG uptake.^{1,2} Control of this unwanted uptake can potentially improve the use of ^{18}F -FDG-PET for identifying thoracic diseases such as cardiac sarcoidosis and malignancies neighboring or infiltrating the cardiac chambers. In addition, reducing artifact from high myocardial FDG signal has become important as investigators have garnered increasing interest in noninvasive detection of the inflamed, rupture-prone³⁻⁶ sub-centimeter coronary artery plaque with ^{18}F -FDG, based on the radionuclide's prior success with large artery inflammation.⁷⁻¹⁰

Dietary modification appears to affect myocardial ^{18}F -FDG metabolism. Lum et al showed that carbohydrate restriction prior to PET reduced artifact from myocardial ^{18}F -FDG uptake.^{11,12} Recently, Williams and Kolodny published an observational, historical-control study in which patients who consumed a very high-fat, low-carbohydrate diet before FDG injection exhibited markedly reduced maximal myocardial

From the Department of Medicine,^a Cedars-Sinai Medical Center, Los Angeles, CA; Department of Imaging,^b Cedars-Sinai Medical Center, Los Angeles, CA; Department of Medicine,^c David Geffen School of Medicine, University of California, Los Angeles, CA.

Funding: This work was supported by the Society of Nuclear Medicine Covidien Seed Grant, through the Education and Research Foundation for the Society of Nuclear Medicine.

Received for publication Oct 1, 2009; final revision accepted Nov 29, 2009.

Reprint requests: Victor Y. Cheng, MD, Department of Imaging, Cedars-Sinai Medical Center, 8700 Beverly Blvd, Taper Building Room 1258, Los Angeles, CA 90048; victor.cheng@cshs.org. 1071-3581/\$34.00

Copyright © 2009 The Author(s). This article is published with open access at Springerlink.com

doi:10.1007/s12350-009-9179-5

^{18}F -FDG uptake.¹³ The same group has subsequently reported preliminary success in using this technique to facilitate ^{18}F -FDG-PET imaging of coronary artery inflammation.¹⁴ Although encouraging, these findings were not from prospective, controlled studies. To systematically address the impact of diet on myocardial glucose metabolism, we conducted a prospective comparison of myocardial FDG uptake in patients randomized to unrestricted (UR), low-carbohydrate (LC), high-fat and low-carbohydrate (HFLC) dietary preparations.

MATERIALS AND METHODS

Patient Population and Dietary Assignment

Using computerized randomization, we assigned 63 outpatients without exclusion criteria (acute inflammatory gallbladder or pancreatic disease, serum triglycerides >600 mg/dL, or solid food dysphagia) referred to Cedars-Sinai Medical Center for whole-body ^{18}F -FDG-PET to one of 3 pre-scan dietary plans: UR, LC, or HFLC. Reason for referral was cancer staging in 58 patients and lung mass evaluation in 5. The study was approved by the Cedars-Sinai Medical Center institutional review board.

A study investigator gave detailed instructions by phone and in print to each patient. UR patients were instructed to eat a typical meal without restrictions in the evening prior to PET, then fast for at least 6 hours prior to ^{18}F -FDG injection (patients could thus eat breakfast, as long as the meal was 6 hours or more beforehand). LC patients were instructed to eat a dinner containing <5 g of carbohydrates in the evening prior to PET, after which they should fast until ^{18}F -FDG injection. HFLC patients were instructed to eat a dinner containing >35 g of fat and <5 g of carbohydrates in the evening prior to PET, then fast until 60–70 minutes prior to ^{18}F -FDG administration, at which time they would drink a 250 mL liquid mixture of 45 mL of RESOURCE Benecalorie® (a low-residue, no-carbohydrate calorie supplement containing 33 g of fat, 91% of which is unsaturated; Novartis Medical, Basel, Switzerland), sucralose-based Crystal Light® flavoring (Kraft Foods, Northfield, IL), and water. Benecalorie was chosen because it was a fatty-acid supplement that did not require large-volume preparation, could be consumed quickly, and was easy to implement. All patients were instructed to avoid exercise and caffeine for at least 24 hours prior to and to record foods consumed within 18 hours before ^{18}F -FDG injection. Written instructions for LC and HFLC patients also listed appropriate and inappropriate food items.

^{18}F -FDG-PET Imaging Protocol

Dose of intravenous ^{18}F -FDG was calculated based on body mass, using a reference of 370 MBq for 65 kg and not exceeding 555 MBq. Insulin was not used to control blood glucose prior to FDG injection. If the requested PET scan

included diagnostic computed tomography (CT), thin oral barium contrast without any flavoring agent was given. After administration of ^{18}F -FDG, patients rested in a quiet room for 60 minutes. CT and PET images were then acquired in a Gemini PET/CT scanner (Philips Healthcare, Bothell, Washington). While the patient breathed normally, CT imaging from the eyes to the mid thighs were performed with the 16-slice multi-detector scanner using the following parameters: 0.5 seconds per rotation, 100 mA tube current, 120 kVp tube voltage, 5 mm slice thickness, and 4.25 mm slice interval. PET images were acquired using 4 mm slice thickness and 5 minutes per bed position for the area of interest and 3 minutes per bed position for all other areas (9 total bed positions for a typical scan). Acquired images were iteratively reconstructed with CT-based attenuation correction.

PET Image Analysis

All reconstructed, attenuation-corrected PET images were sent to a Sun Microsystems workstation (Santa Clara, CA) and evaluated using the Philips Scintigraph software (Bothell, Washington). An experienced, blinded reader assessed each study to determine image quality and generate clinical interpretations. A separate analysis was done by a study investigator (V.C.) to specifically quantify myocardial ^{18}F -FDG uptake. For scans in which myocardial uptake appeared uniform, maximal standard uptake value (SUV_{max}) was obtained by drawing a region of interest around the entire visible left ventricle in axial view, at the level of the lateral papillary muscle. If the papillary muscle was not visible, the reader visually selected the axial slice containing the largest cardiac footprint. If myocardial uptake appeared heterogeneous, the region of interest was drawn in the axial view containing the highest visual uptake. In addition, SUV_{max} were obtained from representative areas in the right lung apex and the liver dome that did not exhibit abnormal activity—these areas served as controls.

Statistical Methods

Based on work from Lum et al,^{11,12} we estimated a reduction of at least 3.0 in mean myocardial SUV_{max} with either LC or HFLC diet, compared to UR. Using a two-sided α of 0.05 and β of 0.20, 21 patients per group would provide 82% power to detect this estimated difference.

All categorical variables were described as frequencies and percents. Group comparisons of categorical variables were made using Pearson's chi-squared test or Fisher Exact test, where appropriate. Continuous variables were described as mean \pm standard deviation. Comparisons of continuous variables between any 2 groups were made with the Student's *t*-test and amongst all 3 groups were made using analysis of variance (ANOVA), with Tukey and Dunnett post-hoc testing whenever there were statistically significant differences. For all analyses, differences with a *P*-value <.05 were considered significant. All statistical analyses were performed using Analyze-It software, version 2.10 (Leeds, UK).

RESULTS

As shown in Table 1, randomization resulted in 3 similar groups. Neither of the patients with diabetes (one in UR and one in LC) used insulin. Frequencies of beta-blocker use, which may affect myocardial glucose metabolism, were similar. Food diary review indicated full adherence to diet assignment for all UR and LC patients. Two UR patients ate breakfast on the day of PET (fasting times were 360 and 390 minutes). The remaining 19 UR patients and all 21 LC patients fasted after dinner until ^{18}F -FDG injection. All UR patients reported eating >5 g of carbohydrates and <35 g of fat in the meal prior to ^{18}F -FDG injection. All LC and all HFLC patients reported restricting carbohydrate intake to <5 g in the dinner prior to ^{18}F -FDG injection. For those assigned to HFLC diet, estimated fat consumption during dinner prior to PET was <35 g in 8 patients (38%), and all drank the Benecalorie-based mixture. Mean fasting time before ^{18}F -FDG injection was significantly shorter for HFLC patients (61 minutes vs 745 minutes for UR and 899 minutes for LC, $P < .001$).

Ranges of myocardial SUV_{max} were 1.2 to 16.3 for UR, 1.0 to 10.2 for LC, and 1.4 to 15.2 for HFLC diets (Figure 1). Compared to UR patients, mean myocardial SUV_{max} was significantly reduced in LC patients (3.3 ± 2.7 vs 6.2 ± 5.2 , 95% confidence interval 0.32 to 5.48, $P = .03$) but not in HFLC patients (5.5 ± 4.2 , 95% confidence interval -2.25 to 3.65, $P = .63$). Seventeen (81%) LC, 12 (57%) HFLC, and 13 (62%) UR patients

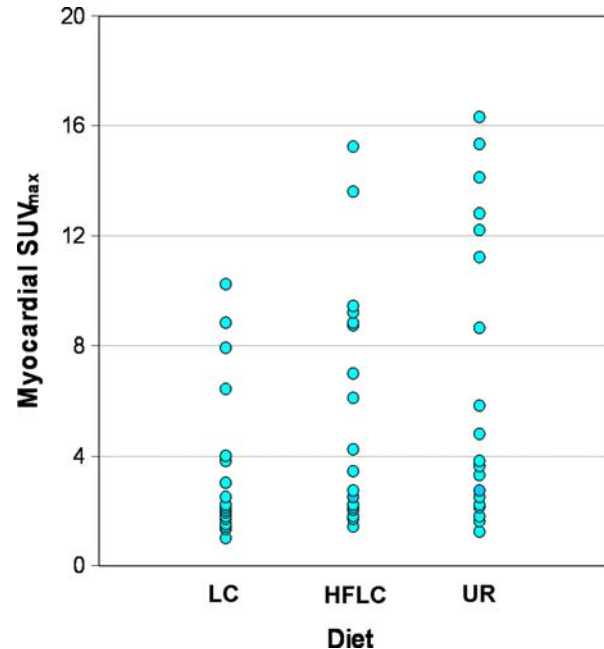


Figure 1. Distribution of maximal myocardial ^{18}F -FDG uptake by dietary assignment (LC, Low-carbohydrate; HFLC, high-fat and low-carbohydrate; UR, unrestricted), as measured by standard uptake value (SUV_{max}). LC patients had significantly lower mean SUV_{max} than UR patients ($P = .03$).

met the suggested criterion of successful suppression: myocardial $\text{SUV}_{\text{max}} \leq 5.0$.¹⁴ When myocardial SUV_{max} was divided by liver lobe SUV_{max} to account for

Table 1. Demographics of study population (n = 63)*

	Unrestricted (UR)	Low-carbohydrate (LC)	High-fat and low-carbohydrate (HFLC)	P-value
Age (years)	56 \pm 16	61 \pm 15	62 \pm 14	NS
BMI (kg/m^2)	26 \pm 5	24 \pm 4	25 \pm 5	NS
Female	13 (62)	14 (67)	14 (67)	NS
Diabetes	1 (5)	1 (5)	2 (10)	NS
Dyslipidemia	4 (19)	5 (24)	6 (29)	NS
Prior MI	0 (0)	0 (0)	0 (0)	NS
Prior CABG	0 (0)	0 (0)	0 (0)	NS
Prior PCI	0 (0)	0 (0)	2 (10)	NS
Beta-blocker use	4 (19)	4 (19)	5 (24)	NS
Cancer staging as indication for PET	20 (95)	20 (95)	18 (86)	NS
Fasting time before ^{18}F -FDG (min)	745 \pm 159	899 \pm 149	61 \pm 21	$<.001$ [†]
^{18}F -FDG dose (MBq)	466 \pm 56	429 \pm 70	426 \pm 78	NS

BMI, Body mass index; MI, myocardial infarction; CABG, coronary artery bypass grafting; PCI, percutaneous coronary intervention; PET, positron-emission tomography; FDG, fluorodeoxyglucose; NS, not significant.

*Where appropriate, results are shown as mean \pm standard deviation or number and percentage (in parenthesis).

[†]Significant for comparison amongst all 3 groups, for LC vs UR, and LC vs HFLC.

Table 2. Maximal standard uptake value (SUV_{max}) measures of ¹⁸F-FDG uptake by dietary assignment*

	Low-carbohydrate (LC)	High-fat and low-carbohydrate (HFLC)	Unrestricted (UR)	P-value
Right lung apex	0.6 ± 0.7	0.6 ± 0.2	0.6 ± 0.3	NS
Liver lobe	2.1 ± 0.7	2.3 ± 0.6	2.0 ± 0.5	NS
Myocardium	3.3 ± 2.7	5.5 ± 4.2	6.2 ± 5.2	0.03 [†]
Number with SUV _{max} ≤ 5.0	17 (81%)	12 (57%)	13 (62%)	NS
Myocardial SUV _{max} /liver SUV _{max}	1.9 ± 2.1	2.6 ± 2.3	3.6 ± 3.5	NS
Number with ratio ≤ 1.0	13 (62%)	8 (38%)	9 (43%)	NS

*Where appropriate, results are shown as mean ± standard deviation or number and percentage.

[†]Significant for LC vs UR.

background uptake, LC patients had the lowest mean value (1.9 ± 2.1), but this was not statistically significant compared to other preparations. No significant difference in mean myocardial SUV_{max} was found between HFLC patients who consumed <35 or ≥35 g fat for dinner (6.0 ± 4.3 vs 5.2 ± 4.3, *P* = .66). Mean SUV_{max} of the right lung apex and liver lobe were similar for all groups. Comparisons of mean SUV_{max} measured from all regions of interest are detailed in Table 2. Figure 2 shows images from the 7 cases with highest myocardial SUV_{max} from each diet group.

DISCUSSION

LC and HFLC dietary preparations aim to diminish myocardial ¹⁸F-FDG uptake by providing the myocardium increased access to fatty acids to reduce glucose-based metabolism.¹⁵⁻¹⁹ Our randomized trial found that, compared to UR diet, a simple LC diet followed by extended fasting effectively reduced myocardial ¹⁸F-FDG uptake, while the addition of fatty-acid loading did not achieve a significant reduction. These results suggest that LC may be preferable to HFLC dietary preparation for myocardial ¹⁸F-FDG suppression. Besides the lack of significant myocardial ¹⁸F-FDG signal suppression in this trial, fatty acid loading may be more difficult for patients to perform and may not be well-received by particularly diet-conscious patients.

Our findings differ from observations in two recent publications from the Beth Israel Deaconess Medical Center. These studies indicated improved myocardial ¹⁸F-FDG uptake suppression with a HFLC diet when compared to standard “fasting” preparations.^{13,14} A large portion of the difference can be attributed to the mean myocardial SUV_{max} of 3.3 in our LC patients, which was markedly lower than the 8.8 reported by Williams and Kolodny, who studied a similar population

under a similar fasting protocol.¹³ In addition, myocardial ¹⁸F-FDG uptake in our HFLC patients (mean SUV_{max} of 5.5) was higher than the 3.9 reported by these authors.¹³ While presence of type II error was possible (our study design had a power of 80%), significant variability in the control of myocardial ¹⁸F-FDG uptake with fatty-acid loading remains the likely explanation. In the follow-up study from the Beth Israel Deaconess investigators to prospectively apply their fatty-acid loading protocol for coronary arterial imaging (Wykrzykowska et al), the outcome was not as impressive as initially reported¹⁴: mean myocardial SUV_{max} was 7.7 and 15 of 31 (48%) patients had recorded myocardial SUV_{max} > 5.0. Myocardial glucose metabolic activity in these patients was likely elevated in part due to high coronary artery disease burden—26 of 32 patients had abnormal results on invasive coronary angiography and 6 had prior myocardial infarctions.

There are at least two potential explanations for the myocardial activity suppression we observed in LC patients. First, in addition to carbohydrate restriction, prolonged fasting may have helped our patients maximize free fatty acid generation from triglyceride cleavage.^{16,20} Mean duration of fasting in our LC patients was 899 minutes; all except 1 fasted for at least 720 minutes. In the protocol described by Williams and Kolodny, some patients received instructions to fast for at least 240 minutes prior to ¹⁸F-FDG administration,¹³ and this may have been insufficient to induce optimal circulating fatty acid levels. Second, patients in our trial received more thorough dietary counseling than in real-life settings, contributing to very high rates of full diet assignment adherence and likely helping to optimize results in our LC patients.

Several potential reasons for why our HFLC preparation did not result in significant myocardial ¹⁸F-FDG uptake suppression should be mentioned. The time we

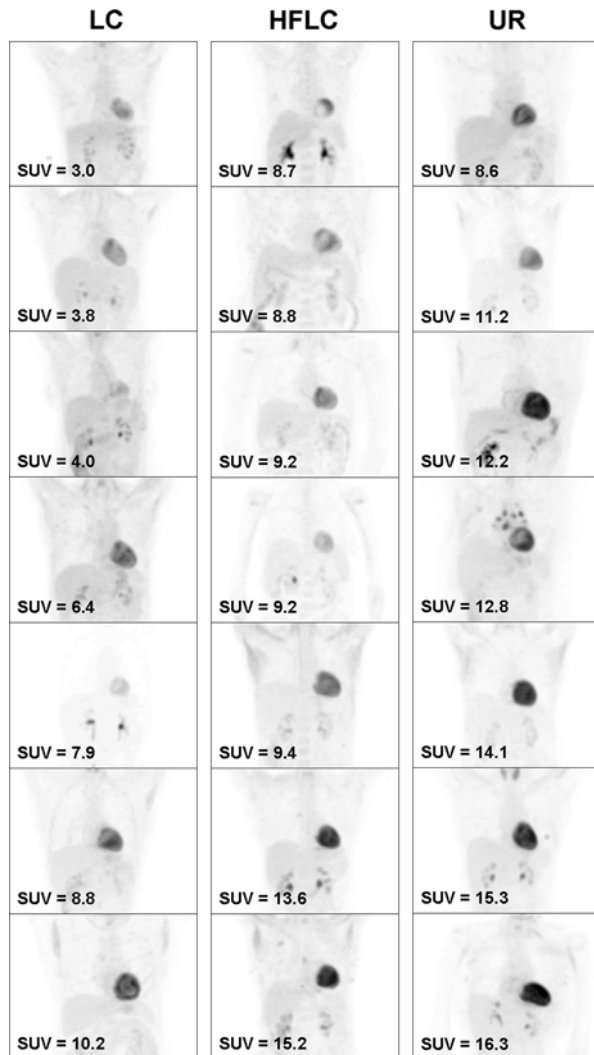


Figure 2. Representative images from 7 patients with the highest maximal myocardial standard uptake value (SUV_{max}) from each diet plan (LC, Low-carbohydrate; HFLC, high-fat and low-carbohydrate; UR, unrestricted). In all cases, the myocardium exhibits greater uptake than the liver and mediastinum. Only LC dietary preparation resulted in patients with $SUV_{max} < 5.0$ in this group (the top 3 examples in the leftmost column). The visual impression that not all myocardial uptake appeared to increase in correspondence to increasing SUV_{max} (e.g., the LC patient with SUV_{max} of 7.9) is because image contrast has been individually adjusted to show neighboring structures.

allotted between fatty drink consumption and ^{18}F -FDG injection (mean of 61 minutes) may have been too brief to capture peak circulating triglyceride levels.²¹ The sucralose-based sweetener we used to flavor the fatty drink could have adversely affected myocardial fatty acid metabolism. In addition, we could not verify whether fatty acid consumption based on our HFLC protocol met or exceeded the quantity necessary for optimal loading. Overloading the myocardium with fatty acids

may adversely increase myocardial oxygen consumption, potentially prompting an unintended secondary increase in glucose metabolism, as shown in multiple prior experiments.²²⁻²⁵

Predictable control of myocardial ^{18}F -FDG uptake is important when using PET to detect lesions close to the heart; these include noncardiac thoracic pathology and diseases of specific cardiac structures. In particular, prominent myocardial FDG signal can greatly hinder investigational techniques to visualize coronary vasculature and coronary arterial plaque inflammation. For this application, adequate suppression depends on both the myocardium and multiple characteristics of the target coronary artery, such as its location, motion, distance to the myocardium, and intensity of ^{18}F -FDG uptake. Although a SUV_{max} threshold of >5.0 has been suggested to indicate insufficient suppression,¹⁴ true criteria for adequate suppression likely vary by individual and have yet to be systematically defined. In the absence of this definition, the amount of myocardial signal variability we observed (e.g., 4 LC patients (19%) and 9 HFLC patients (43%) had myocardial $SUV_{max} > 5.0$) denotes the need to improve the precision of any diet-based approach for controlling unwanted myocardial ^{18}F -FDG uptake.

Our study has several limitations. The entire study population underwent ^{18}F -FDG-PET for suspected or confirmed oncologic disease, not coronary or cardiac disease. Hence, these patients may pose some difference in myocardial glucose metabolism compared to patients with coronary artery disease, particularly those with active myocardial ischemia. To date, FDG-based imaging for coronary artery disease is experimental and not used clinically; we chose not to enroll patients referred for ^{18}F -FDG-based viability assessment for the concern that the clinically important test accuracy characteristics may be altered by changes in dietary preparation. We did not collect lipid profile and glucose laboratory data to confirm patient history. We did not ascertain serum triglyceride changes to verify peak effect of the high-fat drink. Adherence to dietary instructions was based on self-report. Our technique of measuring myocardial SUV_{max} was biased towards reporting the “worst-case” scenario and was more prone to variability and noise than whole-heart sampling. We chose this design to be conservative about quantifying myocardial uptake suppression. Additional interventions that may impact myocardial glucose metabolism, such as peri-imaging beta-adrenergic receptor blockade, were not evaluated.

CONCLUSION

In this randomized controlled trial, a low-carbohydrate diet with extended fasting resulted in suppression

of myocardial ^{18}F -FDG uptake during PET. Low-carbohydrate diet followed by extended fasting prior to ^{18}F -FDG injection should be considered a useful protocol for the purpose of developing ^{18}F -FDG-PET to investigate coronary arterial inflammation.

Acknowledgment

The authors thank the Society of Nuclear Medicine and Covidien for funding this work.

Open Access

This article is distributed under the terms of the Creative Commons Attribution Noncommercial License which permits any noncommercial use, distribution, and reproduction in any medium, provided the original author(s) and source are credited.

References

1. Engel H, Steinhart H, Buck A, Berthold T, Huch Boni RA, von Schulthess GK. Whole body PET: Physiological and artifactual fluorodeoxyglucose accumulations. *J Nucl Med* 1996;37:441-6.
2. Shreve P, Anzai Y, Wahl RL. Pitfalls in oncologic diagnosis with FDG PET imaging: Physiologic and benign variants. *Radiographics* 1999;19:61-77.
3. Jonasson L, Holm J, Skalli O, Bondjers G, Hansson GK. Regional accumulations of T cells, macrophages, and smooth muscle cells in the human atherosclerotic plaque. *Arteriosclerosis* 1986;6:131-8.
4. van der Wal AC, Das PK, Bentz van de Berg D, van der Loos CM, Becker AE. Atherosclerotic lesions in humans: In situ immunophenotypic analysis suggesting an immune mediated response. *Lab Invest* 1989;61:166-70.
5. Ogawa M, Ishino S, Mukai T, Asano D, Teramoto N, Watabe H, et al. (18F)-FDG accumulation in atherosclerotic plaques: Immunohistochemical and PET imaging study. *J Nucl Med* 2004;45:1245-50.
6. Davies JR, Rudd JH, Weissberg PL, Narula J. Radionuclide imaging for the detection of inflammation in vulnerable plaques. *J Am Coll Cardiol* 2006;47:C57-68.
7. Yun M, Yeh D, Araujo LI, Jang S, Newberg A, Alavi A. F-18 FDG uptake in the large arteries: A new observation. *Clin Nucl Med* 2001;26:314-9.
8. Rudd JH, Warburton EA, Fryer TD, Jones HA, Clark JC, Antoun N, et al. Imaging atherosclerotic plaque inflammation with [^{18}F]-fluorodeoxyglucose positron emission tomography. *Circulation* 2002;105:2708-11.
9. Tawakol A, Migrino RQ, Bashian GG, Bedri S, Vermylen D, Cury RC, et al. In vivo ^{18}F -fluorodeoxyglucose positron emission tomography imaging provides a noninvasive measure of carotid plaque inflammation in patients. *J Am Coll Cardiol* 2006;48:1818-24.
10. Rudd JH, Myers KS, Bansilal S, Machac J, Rafique A, Farkouh M, et al. ^{18}F Fluorodeoxyglucose positron emission tomography imaging of atherosclerotic plaque inflammation is highly reproducible: Implications for atherosclerosis therapy trials. *J Am Coll Cardiol* 2007;50:892-6.
11. Lum DP, Wandell S, Ko J, Coe MN. Reduction of myocardial fluorodeoxyglucose uptake artifacts with a carbohydrate restricted diet. *Clin Positron Imaging* 2000;3:155.
12. Lum DP, Wandell S, Ko J, Coel MN. Reduction of myocardial 2-deoxy-2-[^{18}F]fluoro-D-glucose uptake artifacts in positron emission tomography using dietary carbohydrate restriction. *Mol Imaging Biol* 2002;4:232-7.
13. Williams G, Kolodny GM. Suppression of myocardial ^{18}F -FDG uptake by preparing patients with a high-fat, low-carbohydrate diet. *Am J Roentgenol* 2008;190:W151-6.
14. Wykrzykowska J, Lehman S, Williams G, Parker JA, Palmer MR, Varkey S, et al. Imaging of inflamed and vulnerable plaque in coronary arteries with ^{18}F -FDG PET/CT in patients with suppression of myocardial uptake using a low-carbohydrate, high-fat preparation. *J Nucl Med* 2009;50:563-8.
15. Bing RJ, Siegel A, Ungar I, Gilbert M. Metabolism of the human heart II. Studies on fat, ketone and amino acid metabolism. *Am J Med* 1954;16:504-15.
16. Opie LH, Evans JR, Shipp JC. Effect of fasting on glucose and palmitate metabolism of perfused rat heart. *Am J Physiol* 1963;205:1203-8.
17. Neely JR, Morgan HE. Relationship between carbohydrate and lipid metabolism and the energy balance of heart muscle. *Annu Rev Physiol* 1974;36:413-59.
18. Wisneski JA, Gert EW, Neese RA, Mayr M. Myocardial metabolism of free fatty acids. Studies with ^{14}C -labeled substrates in humans. *J Clin Invest* 1987;79:359-66.
19. Frayn KN. The glucose-fatty acid cycle: A physiological perspective. *Biochem Soc Trans* 2003;31:1115-9.
20. Yamanouchi M, Yoshia K, Niwayama H, Nakagawa K, Aioi S, Shikama N, et al. Effect of the duration of fasting on myocardial fluorine-18-fluorodeoxyglucose positron emission tomography images in normal males. *Jpn Circ J* 1996;60:319-27.
21. Thomas TR, Fischer BA, Kist WB, Horner KE, Cox RH. Effects of exercise and n-3 fatty acids on postprandial lipemia. *J Appl Physiol* 2000;88:2199-204.
22. Mjos OD. Effect of free fatty acids on myocardial function and oxygen consumption in intact dogs. *J Clin Invest* 1971;50:1386-9.
23. Kjekshus JK, Mjos OD. Effect of free fatty acids on myocardial function and metabolism in the ischemic dog heart. *J Clin Invest* 1972;51:1767-76.
24. Mjos OD, Kjekshus JK, Lekvan J. Importance of free fatty acids as a determinant of myocardial oxygen consumption and myocardial ischemic injury during norepinephrine infusion in dogs. *J Clin Invest* 1974;53:1290-9.
25. Vik-Mo H, Mjos OD. Influence of free fatty acids on myocardial oxygen consumption and ischemic injury. *Am J Cardiol* 1981;48:361-5.