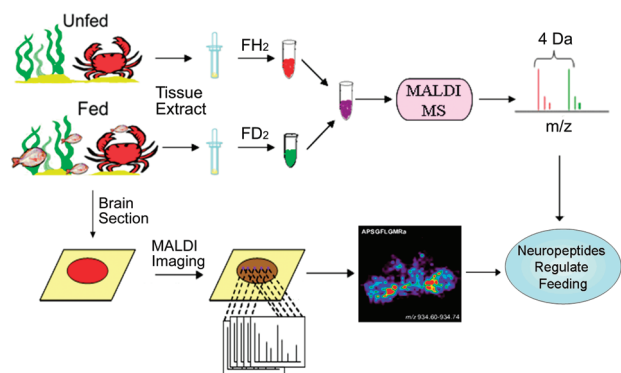


Comparative Neuropeptidomic Analysis of Food Intake via a Multifaceted Mass Spectrometric Approach

Ruibing Chen, Limei Hui, Stephanie S. Cape, Junhua Wang, and Lingjun Li*

Department of Chemistry & School of Pharmacy, University of Wisconsin—Madison, 777 Highland Avenue, Madison, Wisconsin 53705-2222

Abstract



Feeding behavior is a fundamental aspect of energy homeostasis and is crucial for animal survival. This process is regulated by a multitude of neurotransmitters including neuropeptides within a complex neuroendocrine system. Given the high chemical complexity and wide distribution of neuropeptides, the precise molecular mechanisms at the cellular and network levels remain elusive. Here we report comparative neuropeptidomic analysis of brain and a major neuroendocrine organ in a crustacean model organism in response to feeding. A multifaceted approach employing direct tissue matrix-assisted laser desorption/ionization mass spectrometry (MALDI-MS), stable isotopic labeling of neuropeptide extracts for quantitation, and mass spectrometric imaging (MSI) has been employed to obtain complementary information on the expression changes of a large array of neuropeptides in the brain and the pericardial organ (PO) in the crab *Cancer borealis*. Multiple neuropeptides exhibited changes in abundance after feeding, including RF-amides, *Cancer borealis* tachykinin-related peptides (CabTRPs), RYamides, and pyrokinins. By combining quantitative analysis of neuropeptide changes via isotopic labeling of brain extract and MSI mapping of neuropeptides of brain slices, we identified the boundary of the olfactory lobe (ON) and the median protocerebrum (MPC) area as two potential feeding centers in the crab brain.

Keywords: Feeding, neuropeptide, *Cancer borealis*, quantitation, MALDI mass spectrometric imaging (MSI), MALDI-TOF/TOF

Regulation of food intake and body weight is a complex physiological process involving interactions between the nervous system and peripheral signals (1–3). It is suggested that three aspects are involved in the feeding regulation, including a sensor that monitors the level of energy, a nervous system that receives and integrates signals from circulating hormones, and an effector system that influences energy intake and energy expenditure (4). As one of the most important and complex classes of signaling molecules, many neuropeptides have been demonstrated to play critical roles in this process. For instance, several neuropeptides present in the hypothalamus including neuropeptide Y (NPY), orexin, galanin, proopiomelanocortin (POMC), melanin-concentrating hormone (MCH), neurotensin, cholecystikinin (CCK), bombesin, corticotropin-releasing factor, and tachykinin can either stimulate or decrease food intake (5–9). However, the interplay among these neuropeptides and hormones at the system level is largely unknown due to the enormous technical challenges of studying the complex mammalian nervous system. In contrast, invertebrate nervous systems offer simpler yet relevant model systems for gaining insight into the functional roles of neuropeptides in feeding (10–12).

Increasing evidence suggests that many of the signaling molecules and pathways underlying complex behaviors such as feeding are conserved across species and animal phyla. For example, the conserved NPY signaling pathway has been strongly implicated in the regulation of food intake behaviors in vertebrates and in *Caenorhabditis elegans* (13, 14). More recently, *Drosophila* neuropeptide F, a human NPY homologue, was reported to mediate food signaling through a conserved pathway (15). Furthermore, a remarkably large and diverse group of RFamides has been characterized in invertebrates (16, 17), and members of the RFamide family have been shown to influence feeding behavior in both vertebrates and invertebrates (18). However, the interactions of multiple peptidergic systems at the network levels are not well understood. To study the peptidergic regulation of feeding, the *Cancer borealis*

Received Date: October 12, 2009

Accepted Date: November 26, 2009

Published on Web Date: December 28, 2009

nervous system is a particularly attractive invertebrate preparation due to the well-defined neural circuits in the stomatogastric nervous system (STNS) and its extensive neuromodulation by various signaling molecules including numerous neuropeptides (11, 19). The neuropeptide complement of *C. borealis* has been extensively studied by immunohistochemistry (20) and mass spectrometry (21–25).

Conventionally the identification of appetite regulators has been achieved by the use of peptide injections followed by measurements of food intake, molecular cloning in combination with gene expression study, and radioimmunoassay (26–28). Recently the advancement of mass spectrometry (MS)-based techniques enabled more rapid and global analysis of neuropeptide expression in response to food intake. Fricker and co-workers reported the use of isotopic labeling with trimethylammoniumbutyryl (TMAB) *N*-hydroxysuccinimide coupled to liquid chromatography (LC)/MS/MS for large-scale peptidomic changes in *Cpe^{fat/fat}* mouse hypothalamus by food deprivation and exercise (29).

In this study, we combine direct tissue analysis and stable isotope labeling to investigate tissue-specific expression and distribution of neuropeptides in crustacean brain and pericardial organ (PO) upon feeding. In addition, we employ MALDI MS imaging (MSI) to examine the spatial distribution of neuropeptides in the brain, which shows site-specific neuropeptide expression. Collectively, this study demonstrates that MS-based large-scale quantitative peptidomic investigation enables simultaneous determination of the coordinated changes of a large number of neuropeptides in feeding in a well-defined neuronal structure. This information can

be combined with single-cell physiology of the feeding circuit to provide further insights into neuropeptide regulation of feeding behavior at the network and cellular levels.

Results and Discussion

Feeding behavior is regulated by multiple neuropeptides within the extremely complex nervous system. A better understanding of the neural circuitry that controls this process requires knowledge of the full cast of molecular players and their mode of action on each of the elements of the circuits. Here, we employed a powerful multifaceted MS-based platform for sensitive and high-throughput comparative analysis of a panel of neuropeptides under different feeding states. Furthermore, the MSI technique enables precise localization of peptide expression and differential mapping of peptide isoforms of the same peptide family. Based on this integrated methodology, a large array of neuropeptides can be investigated simultaneously for their roles in the feeding process.

Study of Peptide Expression Level Changes in Brain Tissue Using Isotopic Formaldehyde Labeling

Figure 1 shows a representative MALDI-TOF/TOF spectrum obtained from a single brain extract. The identities of neuropeptides were assigned by a combination of accurate mass matching against an in-house organ-specific neuropeptide database of *C. borealis* (30) and collision-induced dissociation (CID) sequence-specific fragmentation. A total of 51 neuropeptides that

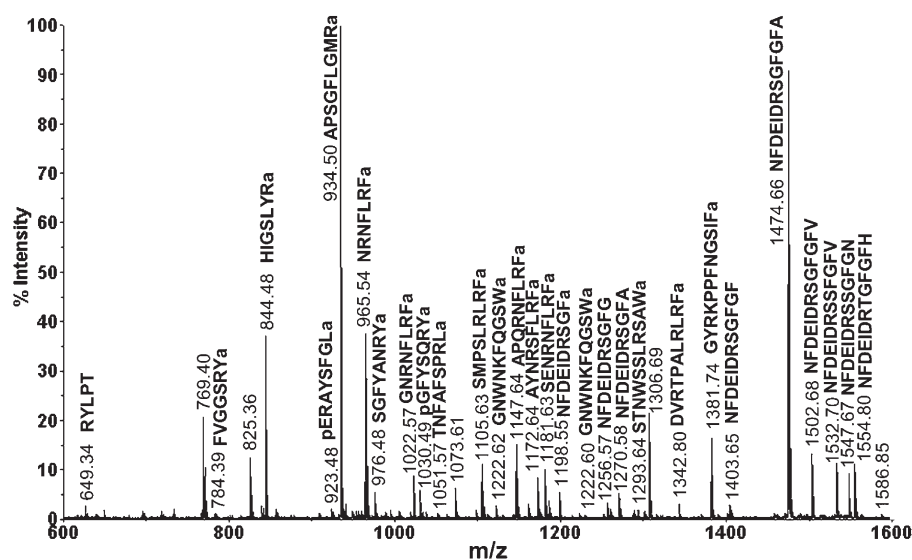


Figure 1. Neuropeptide detection of a single brain extract on MALDI-TOF/TOF. The abundant peaks in the spectrum are labeled with their masses and amino acid sequences. These peptides belong to several neuropeptide families including RFamide, crustacean tachykinin-related peptide (CabTRP), RYamide, orckinin, YRamide, SIFamide, and proctolin.

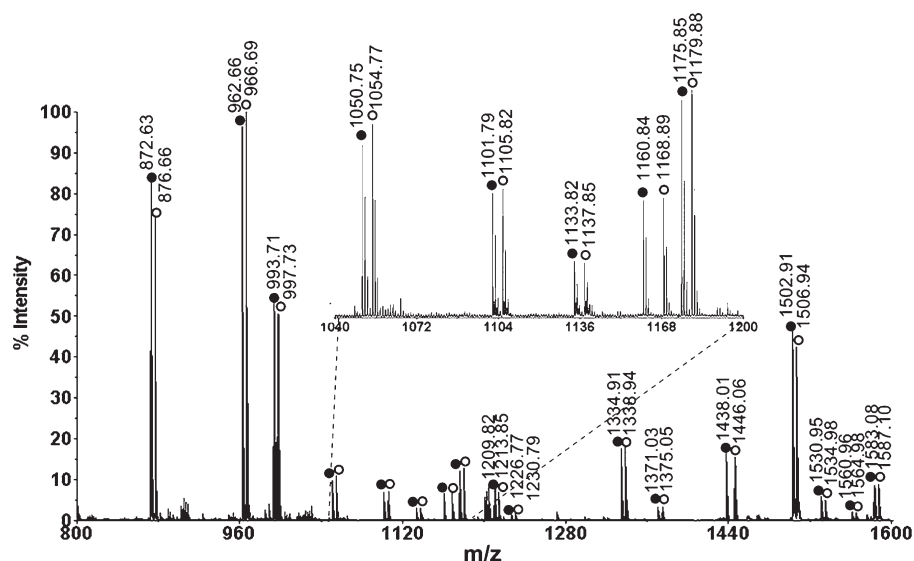


Figure 2. MALDI-TOF/TOF mass spectrum of isotopic formaldehyde labeled mixture of brain extracts. Two aliquots of C18 ziptip processed brain extract of the same volume are labeled with formaldehyde or deuterium formaldehyde in the same way and mixed in a ratio of 1:1. The D_2 -formaldehyde (FD_2) labeled peaks are indicated with open circles, and the H_2 -formaldehyde (FH_2) labeled peaks are indicated with closed circles. There are 4 Da mass differences for each incorporated label.

belong to 15 families, including RFamide, CabTRP, A-type, B-type, and C-type allatostatins, RYamide, orckinin, orcomyotropin, proctolin, crustacean cardioactive peptide (CCAP), corazonin, pigment-dispersing hormone (PDH), pyrokinin, SIFamide, and YRamide, were detected in a single spectrum.

In order to accurately measure the quantitative changes of neuropeptide expression in animals under different feeding states, stable isotopic labeling with formaldehyde was employed. This labeling technique has been reported as a fast and simple reaction that can be applied for differential proteomic and peptidomic analyses (31). MALDI-TOF/TOF analysis of a mixture of differentially labeled control brain extract combined in a 1:1 volume ratio showed approximately 1:1 ratios of each labeled peptide pair (Figure 2), thus validating the labeling methodology. As a result, 25 neuropeptides from 9 families were examined in the feeding study. Reverse labeling experiments of two pericardial organ extract samples have also been performed, which showed that the H_2 -formaldehyde and D_2 -formaldehyde have the same labeling efficiency (Figure S1, Supporting Information). Using this method, we examined the quantitative changes of neuropeptide expression in the brains from five groups of fasting and satiated crabs. Figure 3 shows a representative MALDI-TOF/TOF mass spectrum obtained from one group of brain extracts. Several neuropeptide families exhibited an increase in ion abundance after feeding, including CabTRPs, RFamides, YRamide, and a few others. Table 1 lists the five groups of average abundance ratios for 25 neuropeptides present in fed crab brain versus unfed crab brain. The mean ratios averaged for five

groups of data and their p values were included. A graphic representation of abundance ratios for each examined neuropeptide (expressed as characteristic m/z values) in fed crab versus unfed crab is provided in Figure S2, Supporting Information.

Cancer borealis Tachykinin-Related Peptides (CabTRPs). Significant changes were observed for members from several neuropeptide families ($p < 0.01$), indicated with italic type in Table 1. Two CabTRPs (m/z 934.49 and m/z 964.50) were detected to be consistently elevated in fed crab brain from 1.4- to 4.4-fold in all five groups of preparations with mean ratios of 2.1 and 2.7 ($p < 0.001$). The tachykinin peptide family exhibits various physiological effects on both the central nervous system (CNS) and peripheral tissues of organisms throughout the animal kingdom ranging from invertebrates to mammals (32–34). It was reported previously that two mammalian tachykinin peptides, neuropeptide K and substance P, can acutely and consistently suppress feeding behavior in rats (35, 36). In another feeding study with goldfish, the level of r-preprotachykinin mRNA was increased in the brain after food intake (37). In crustaceans, tachykinin-related peptides have been isolated and characterized in both the CNS and the STNS as well as in midgut endocrine cells (38–41). Previous studies showed excitatory effects of both CabTRP 1a (38) and CabTRP II (41) peptides on the pyloric motor pattern, suggesting its involvement in food processing. The presence and distribution of both CabTRP 1a and CabTRP II in neural tissue, as well as midgut tissues, have been documented in numerous *Cancer* crabs (41) and lobster *Homarus americanus* (40), further supporting

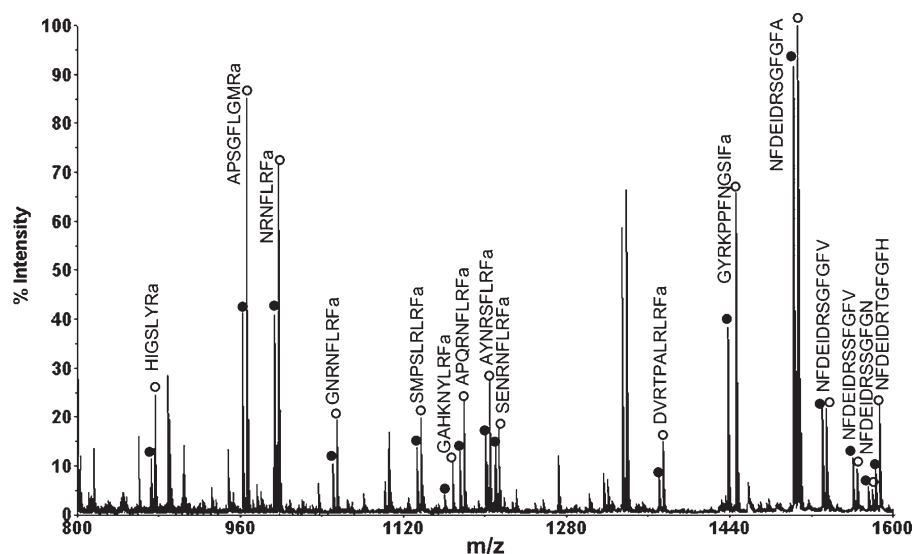


Figure 3. Representative MALDI-TOF/TOF mass spectrum of isotopic formaldehyde labeled mixture of brain extracts from fed and unfed crabs. Three crab brains were used to make each extract. Sample from unfed crabs was labeled with FH_2 and sample from fed crabs was labeled with FD_2 . The heavy labeled peaks are indicated with open circles, and the light labeled peaks are indicated with closed circles. The peak pairs from several abundant neuropeptides are indicated and labeled with their corresponding amino acid sequences.

its potential roles associated with feeding. Here, we provide the first direct evidence that the levels of these two crustacean tachykinin-related peptides are elevated in crab brain after food intake, which suggests that this peptide family is involved with food intake in decapod crustaceans. This observation also agrees well with previous reports on the roles of tachykinin-related peptides (TKRPs) in feeding in various insects (42). For instance, dramatic TKRP expression level changes were observed in the brain during foraging in honey bee probed by quantitative mass spectrometry (43). In addition, in cockroach, starvation led to a decrease of the level of LemTRP-1 in the midgut, whereas its level in hemolymph was elevated, suggesting that LemTRP-1 was released from midgut to hemolymph to sustain food consumption (44). In our previous study, we also observed higher levels of CabTRPs in circulating fluid hemolymph in unfed crabs, suggesting that these peptides might possibly be released from midgut endocrine cells under starvation (45). Interestingly, we demonstrate here that CabTRPs are accumulated to a higher level in the brain after feeding compared with levels in unfed crabs, which may be due to less CabTRPs being released into the hemolymph after feeding.

FMRFamide Related Peptides. The abundances of several RFamides, including NRNFLRFamide (m/z 965.54), GAHKNYLRamide (m/z 1104.61), SMPSLRLRFamide (m/z 1105.63), APQRNFLRFamide (m/z 1147.65), GNRNFLRFamide (m/z 1022.57), and AYNRSFLRFamide (m/z 1172.63), were significantly increased in the brains of fed animals compared with unfed animals, but by a lesser extent (~ 1.5 fold) than the CabTRPs. RFamide-related peptides

represent a large neuropeptide family identified in the nervous systems of animals across all major phyla with diverse functions (46–48). The anorexigenic role of RFamide in feeding regulation in mice was first suggested 20 years ago (49), followed by increasing evidence of the involvement of this peptide family in feeding from many other animal models (47). The quantitative studies described here show increased levels of several RFamide isoforms in crab brain after a meal, suggesting that RFamides may also function as anorexigenic signaling molecules in crab.

RYamides and YRamide. RYamides FVGGSRamide (m/z 784.41) and SGFYANRYamide (m/z 976.46) and YRamide HIGSLYamide (m/z 844.48) also exhibited higher abundances in fed crab. The RYamide peptide family was first discovered in the pericardial organ of *C. borealis* (24) and thus far the physiological effects of this family are largely unknown. HIGSLYamide was identified recently from the pericardial organ and sinus gland of *C. productus* (50), and subsequently this peptide was also found in the sinus gland, brain, and STNS of *C. borealis* (22, 25). So far no physiological study has been reported for this peptide. The quantitative analysis of neuropeptidomes in response to feeding described here showed that both peptides exhibited an increase in relative abundance in crab brain after food intake, suggesting their potential relationship with feeding.

Pyrokinin. Conversely, a pyrokinin (m/z 1037.55) was detected to be significantly reduced in the brain extract from fed animals compared with the brain extract sampled from unfed animals ($p < 0.001$). Among the nine neuropeptide families that were

Table 1. Ratios of Neuropeptide Abundances in the Brain Tissues Collected from Fed Crabs versus Unfed Crabs ($N = 5$)^a

<i>m/z</i>	sequence	1	2	3	4	5	R_{average}	SD_{average}	<i>p</i> value
RFamide Family									
<i>965.54</i>	<i>NRNFLRFamide</i>	<i>1.35</i>	<i>1.12</i>	<i>1.14</i>	<i>1.49</i>	<i>1.65</i>	<i>1.35</i>	<i>0.22</i>	<i><0.001</i>
<i>1022.57</i>	<i>GNRNFLRFamide</i>	<i>1.21</i>	<i>1.16</i>	<i>1.10</i>	<i>1.50</i>	<i>1.82</i>	<i>1.36</i>	<i>0.30</i>	<i>0.002</i>
<i>1104.61</i>	<i>GAHKNYLRFamide</i>	<i>1.80</i>	<i>1.14</i>	<i>1.30</i>	<i>1.96</i>	<i>2.58</i>	<i>1.76</i>	<i>0.57</i>	<i><0.001</i>
<i>1105.63</i>	<i>SMPSLRLRFamide</i>	<i>1.18</i>	<i>1.32</i>	<i>0.91</i>	<i>1.44</i>	<i>1.33</i>	<i>1.23</i>	<i>0.20</i>	<i>0.009</i>
<i>1147.65</i>	<i>APQRNFLRFamide</i>	<i>1.25</i>	<i>1.07</i>	<i>1.04</i>	<i>1.48</i>	<i>1.84</i>	<i>1.34</i>	<i>0.33</i>	<i>0.007</i>
<i>1172.63</i>	<i>AYNRSFLRFamide</i>	<i>1.59</i>	<i>1.53</i>	<i>1.3</i>	<i>1.61</i>	<i>1.46</i>	<i>1.5</i>	<i>0.12</i>	<i><0.001</i>
1181.62	SENRNFLRFamide	0.88	1.06	0.99	1.46	1.87	1.257	0.40	0.102
1288.68	QDLDHVFLRFamide	0.75	0.67	0.87	1.01	1.05	0.87	0.16	0.033
1342.81	DVRTPALRLRFamide	1.11	1.03	0.65	1.40	1.13	1.07	0.27	0.756
Orcokinin Family									
1198.55	NFDEIDRSGFamide	1.73	0.84	1.12	1.56	1.6	1.37	0.37	0.022
1270.57	NFDEIDRSGFA	0.79	1.94	0.92	2.57	1.19	1.48	0.75	0.118
1474.63	NFDEIDRSGFGFA	1.19	0.84	1.04	1.06	1.14	1.05	0.13	0.304
1502.70	NFDEIDRSGFGFV	1.19	0.88	1.17	1.02	1.13	1.08	0.12	0.124
1532.70	NFDEIDRSSFGFV	1.25	0.71	1.42	0.92	1.03	1.07	0.27	0.702
1547.68	NFDEIDRSSFGFN	1.15	0.56	1.02	0.97	1.14	0.97	0.24	0.542
1554.70	NFDEIDRTGFGFH	1.87	0.94	0.87	1.95	2.13	1.55	0.59	0.028
RYamide Family									
<i>784.41</i>	<i>FVGGSRyamide</i>	<i>1.87</i>	<i>1.05</i>	<i>1.30</i>	<i>1.80</i>	<i>b</i>	<i>1.50</i>	<i>0.39</i>	<i>0.009</i>
<i>976.46</i>	<i>SGFYANRYamide</i>	<i>1.34</i>	<i>1.26</i>	<i>1.06</i>	<i>1.6</i>	<i>1.83</i>	<i>1.42</i>	<i>0.30</i>	<i>0.001</i>
CabTRPs Family									
<i>934.49</i>	<i>APSGFLGMRamide</i>	<i>2.33</i>	<i>1.43</i>	<i>1.61</i>	<i>1.94</i>	<i>3.14</i>	<i>2.09</i>	<i>0.67</i>	<i><0.001</i>
<i>964.50</i>	<i>TPSGFLGMRamide</i>	<i>n.a</i>	<i>1.84</i>	<i>1.59</i>	<i>3.08</i>	<i>4.37</i>	<i>2.72</i>	<i>1.27</i>	<i><0.001</i>
Proctolin Family									
649.37	RYLPT	3.80	1.31	1.47	<i>b</i>	<i>b</i>	2.19	1.39	0.038
CCAP Family									
956.38	PFcNAFTGcamide	1.00	1.44	1.26	1.08	<i>b</i>	1.19	0.19	0.037
YRamide Family									
<i>844.48</i>	<i>HIGSLYRamide</i>	<i>8.29</i>	<i>1.07</i>	<i>2.82</i>	<i>1.61</i>	<i>3.21</i>	<i>3.4</i>	<i>2.86</i>	<i>0.002</i>
Pyrokinin Family									
<i>1037.55</i>	<i>SGGFASFPRamide</i>	<i>0.86</i>	<i>0.58</i>	<i>0.70</i>	<i>0.88</i>	<i>b</i>	<i>0.75</i>	<i>0.14</i>	<i><0.001</i>
SIFamide Family									
1381.74	GYRKPPFNGSIFamide	1.06	1.09	0.93	1.58	1.39	1.20	0.26	0.038

^aPeptides shown in italics exhibited significant changes upon feeding ($p < 0.01$). ^bNot applicable.

examined in this study, pyrokinin was the only one showing significant reduction in relative ion abundance ratio in crab brain after food intake. An electrophysiological study has shown that pyrokinins excite gastric mill circuit neurons and elicit the gastric mill rhythm (chewing) in the isolated STG from *C. borealis* (51). Therefore, it is not surprising to see the change in pyrokinin content in the brain after food intake. Further physiological experiments are needed to establish the precise roles of this peptide in feeding.

Peptides Not Changed in the Brain after Feeding. Orcokinin was one of the most abundant neuropeptide

families present in the crab brain, and the majority of members in this family did not exhibit significant changes in abundance upon feeding. Most orcokinin peptides detected in fed and unfed animals were around 1.0 in all five groups of preparations. In addition, several other neuropeptides, such as SIFamide and CCAP, did not change their relative abundances significantly upon feeding.

The MS-based quantitation study of multiple families of neuropeptides in crab brains offers an initial glimpse of the diverse assortment of neuropeptides involved in feeding behavior and provides the basis for subsequent biochemical and physiological studies.

The differential expression of neuropeptide isoforms within various peptide families upon feeding also provides important biological insights into possible functional consequences of the large peptide diversity and multiplicity in the context of food intake. Some of these neuropeptides may play roles in control or termination of food intake, and some of them may be downstream changes or indirectly affected by the feeding states of the animals. Future studies will be performed to test the actions of certain target neuropeptides on the neural circuits. In addition, behavioral studies followed by infusion of particular neuropeptides into the animal will allow us to further understand

the physiological consequences of the neuropeptides examined in this study.

Spatial Mapping of Neuropeptides Involved in Feeding in *C. borealis* Brain by MALDI Mass Spectrometric Imaging

To investigate correlation of neuropeptide expression and localization, MALDI MS imaging was employed to map the distribution of several neuropeptides of interest in the brain. Tissues were collected from the middle region of the brain and mass spectral images of numerous neuropeptides were obtained. The structure and morphology of *C. borealis* brain has been well studied (52). As shown in Figure 4a, the main body of the

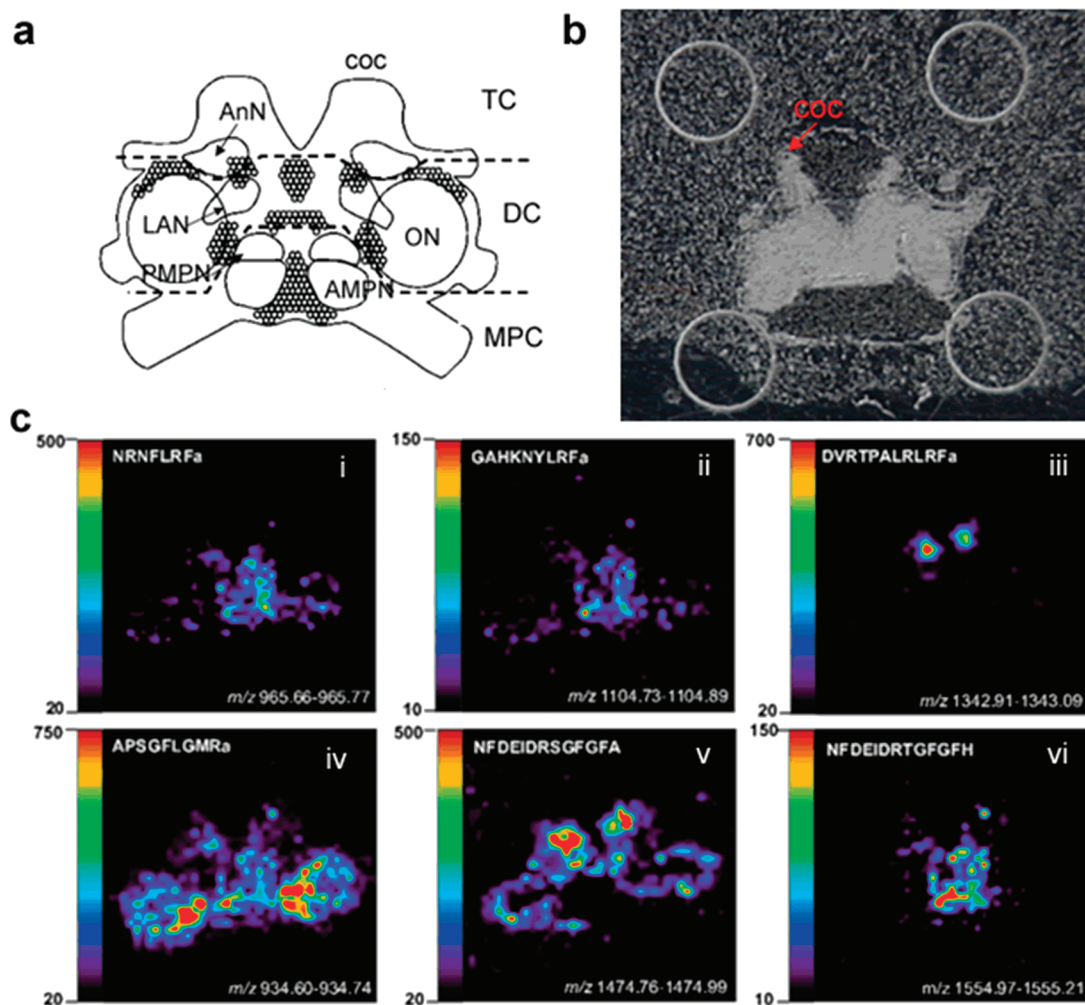


Figure 4. Neuropeptide localization in the *C. borealis* brain. (a) Representation of the ventral surface of the isolated brain with labeled neuropil regions and neuronal clusters. The main body of the decapod crustacean brain consists of three contiguous brain regions, the median protocerebrum (MPC), deutocerebrum (DC), and tritocerebrum (TC). The coc projects from the tritocerebrum to the thoracic ganglion (TG). Five major neuropils in crab brain include anterior (AMPN) and posterior medial protocerebral neuropil (PMPN), olfactory lobe (ON), lateral antenna I neuropil (LAN), and antenna II neuropil (AnN). Neuronal clusters 6 in the MPC and 9 and 10 near the ON are projected to the STNS through the coc. (b) Optical micrograph of a brain slice on a MALDI plate coated with thin layer of DHB matrix. The coc nerve is arranged on the top as indicated. (c) MALDI-MS images of several neuropeptides of interest from three families, including three RFamides, CabTRP 1a, and orckinins with DV RTPALRLRFa and NFDEIDRTGFGFH showing distinct localization from the general distribution trend of their respective families. Note that the orientation of the panels is the same.

decapod crustacean brain consists of three contiguous brain regions, the median protocerebrum (MPC), deutocerebrum (DC), and tritocerebrum (TC). There are five major neuropils in a crab brain, anterior (AMPN) and posterior medial protocerebral neuropil (PMPN), olfactory lobe (ON), lateral antenna I neuropil (LAN), and antenna II neuropil (AnN). Three of the neuronal clusters were indicated, 9 and 10 on the boundary of ON and 6 between AMPN and PMPN. Figure 4b shows the optical micrograph of a brain slice on the MALDI plate with a thin layer of DHB matrix coating. Figure 4c shows several example images of neuropeptides present in the brain, including three RFamides, two orcokinins, and CabTRP 1a. Most RFamides, such as NRNFL-RFamide (m/z 965.54) and GAHKNYLRFamide (m/z 1104.65), are concentrated in AMPN and PMPN (Figure 4c, i and ii). CabTRP 1a (APSGFLGMRamide, m/z 934.49) is the most abundant peptide in the crab brain, and it is extensively present in most areas of the brain; however it has higher concentration in the inner boundary of the ON (Figure 4c, iv). Previous immunocytochemical study has also shown similar distribution of these two neuropeptide families in the brain of other crustacean species (53, 54). Most isoforms of the orcokinin family, such as NFDEIDRSGFGFA (m/z 1474.70), are expressed in high abundance in AnN (Figure 4c, v), however, unlike CabTRPs and RFamides, most orcokinin members are not seen in the MPC region. Most isoforms from the same family are localized in identical brain areas, although several exceptions are seen. For instance, one of the orcokinins NFDEIDRTGFGFH (m/z 1554.70, Figure 4c, vi) exhibits a distinct distribution pattern from the other isoforms of the family, while displaying similar spatial patterns as the RFamides and exhibiting high abundance in the MPC region. Another example is DVRTPALRLRFamide (m/z 1342.81), which is only detected with high abundance in AnN.

The functions of signaling molecules in a complex neuronal structure or an organism are often related to their locations. Based on the current study, most of these feeding related neuropeptides including CabTRPs and several RFamides were detected in the MPC region or around the ON boundary (Figure 4c, i, ii, and iv). In contrast, most of the orcokinin family members, which did not show changes upon feeding, were more intensively expressed in AnN (Figure 4c, v). Furthermore, MALDI mass spectral images also showed the differential expression of family isoforms in a region-specific manner and possible association with feeding. For example, in contrast to several RFamides displaying differences in response to feeding, several RFamide isoforms were unchanged after feeding (Table 1), such as DVRTPALRLRFamide (m/z 1342.81). MALDI imaging showed that this peptide was only present in

the AnN region (Figure 4c, iii), which was distinctly different from the other RFamides involved in feeding. Likewise, such differential localization of neuropeptides was observed for the orcokinin family as well. The relative ion abundance ratios of most orcokinins between brain tissues from unfed and fed crabs were around 1:1, and these peptides were more concentrated in AnN and were not detected in the MPC region. However, NFDEIDRTGFGFH (m/z 1554.70) was expressed at a higher level after feeding (\sim 1.5-fold), and interestingly this peptide was only detected in the MPC region and not seen in the AnN. These results demonstrate that members from the same family exhibit distinct distribution patterns in the crustacean brain and that feeding induced neuropeptide expression level changes are highly related to their localization in the brain. A single neuropeptide family may exert multiple physiological functions by expressing different isoforms in different brain regions. As reported by Kirby and Nusbaum, *C. borealis* brain is connected with the STNS by projection from cell clusters 6 and 7 (near AMPN and PMPN) and 9 and 10 (around ON) through CoG via the coc fiber (52), which is consistent with the results in this study that most neuropeptides expressed at different levels after food intake are concentrated in those two regions. Therefore, it is very likely that the brain regulates the STNS motor pattern to control feeding behavior and food processing by transporting multiple neuropeptides that are expressed in these regions. In other words, the MPC and the ON may function as major feeding regulation centers in crustaceans. To further understand the mechanism of food intake, it will be interesting to study the level of cell-specific neuropeptide changes within the well-characterized neural network, and immunocytochemical studies and single cell analysis will be carried out for such purpose.

Neuropeptide Changes in the Pericardial Organs after Feeding

Pericardial organs (POs) are one of the major neurosecretory sites in crustacean nervous system. Figure 5 shows MALDI-TOF/TOF mass spectra of direct tissue analysis of POs from unfed (A) and fed (B) animals. Around 20 neuropeptides were detected directly from the PO tissue, including RYamides, RFamides, A-type allatostatins (AST-A) and B-type allatostatins (AST-B). Arginine-vasopressin (AVP, 10^{-6} M) was added as an internal standard. As shown in Figure 5, the neuropeptide profiles from POs in both animals were almost identical qualitatively. However, RFamides in the POs from the fed animal were detected with much lower signal intensities, and the peak intensities of several RYamides were slightly higher in the POs from the fed animal. To more accurately measure the differences in neuropeptide expression in POs between unfed and fed

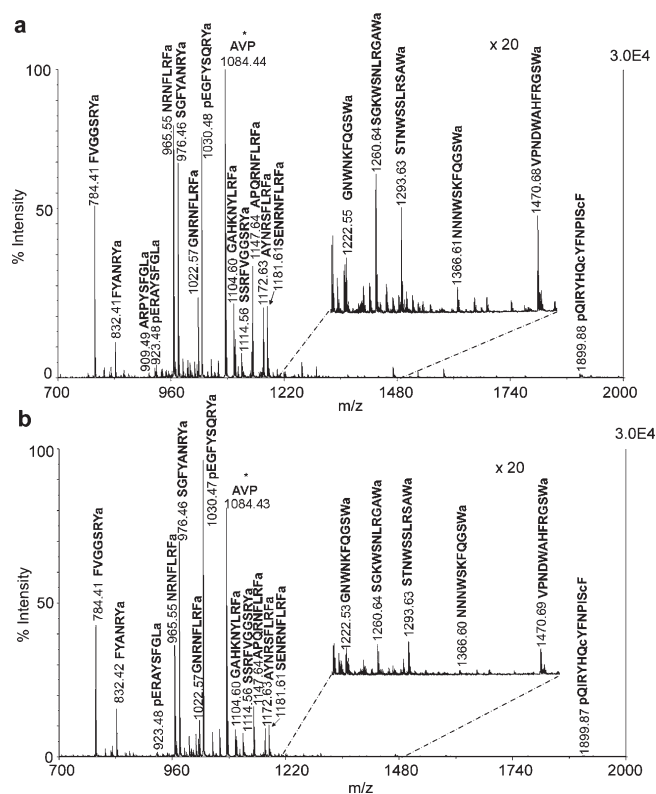


Figure 5. MALDI-TOF/TOF mass spectra of direct tissue analysis comparison of the POs from (a) unfed and (b) fed crabs. Tissues were collected from the same position of anterior region of the PO in both animals. Arginine-vasopressin (AVP) (m/z 1084.44) was added as an internal standard indicated with asterisk. Sixteen neuropeptides from four families were detected and labeled with their masses and amino acid sequences.

animals, stable isotopic labeling of tissue extract was performed. Table 2 shows ratios of neuropeptide abundances in the POs between fed and unfed animals from 11 groups of preparations. Most isoforms of RFamides exhibited significant reduction in abundance in fed animals ($p < 0.01$).

Pericardial organs can release peptide hormones to modulate the motor patterns generated by neural circuits located in the STNS. One can expect the involvement of this important neurohemal organ with feeding by releasing certain neuropeptides into hemolymph. Different from trends observed in brain, most detected neuropeptides exhibited reduced levels in the POs after food intake; presumably due to possible release of these peptides from the POs after feeding. However, due to the low concentration of neuropeptides present in the circulating fluid, RFamides were rarely detected in our hemolymph profiling experiments. Among the three families that were detected in the POs, RFamides were most significantly reduced (Table 2). Interestingly, although several different RFamides were changed upon feeding, GAHKNYLRFamide showed the most significant

Table 2. Ratios of Neuropeptide Abundances in the PO from Fed versus Unfed Crabs ($N = 11$)^a

m/z	sequence	R_{average}	SD_{ratio}	p value
RYamide				
784.41	FVGGSSRYamide	0.89	0.11	0.104
976.46	SGFYANRYamide	0.80	0.16	0.014
RFamide				
<i>965.54</i>	<i>NRNFLRFamide</i>	<i>0.71</i>	<i>0.14</i>	<i>0.001</i>
1005.57	GPRNFLRFamide	0.88	0.12	0.069
1022.57	GNRNFLRFamide	0.86	0.15	0.039
<i>1104.61</i>	<i>GAHKNYLRFamide</i>	<i>0.57</i>	<i>0.07</i>	<i><0.001</i>
<i>1146.61</i>	<i>GYSKNYLRFamide</i>	<i>0.67</i>	<i>0.08</i>	<i>0.004</i>
<i>1147.65</i>	<i>APQRNFLRFamide</i>	<i>0.76</i>	<i>0.16</i>	<i>0.009</i>
<i>1172.63</i>	<i>AYNRSFLRFamide</i>	<i>0.80</i>	<i>0.11</i>	<i>0.009</i>
<i>1181.62</i>	<i>SENRNFLRFamide</i>	<i>0.68</i>	<i>0.11</i>	<i><0.001</i>
AST-B				
1293.63	STNWSSLRSAWamide	0.92	0.16	0.269
1470.70	VPNDWAHFRGSWamide	0.82	0.13	0.078

^aPeptides highlighted in italics exhibited significant changes ($p < 0.01$) upon feeding.

reduction among all RFamides in the POs and the greatest increase in the brain preparations (Table 1). This observation strongly suggests that GAHKNYLRFamide may play a more important role in food intake compared with other RFamides. Again, the current study demonstrates that isoforms of different amino acid sequences from a single neuropeptide family may have distinct physiological functions, therefore highlighting the unique advantages of using a mass spectrometry-based peptidomics approach to reveal such isoform-specific changes in feeding.

Methods

Animals and Feeding Experiments

Jonah crabs, *Cancer borealis*, were purchased from The Fresh Lobster Company (Gloucester, MA) and maintained without food in an artificial seawater tank at 12–13 °C for 10 days before use. In a feeding experiment, the crabs were fed with small pieces of seafood until they stopped, which usually took 30–45 min. Crabs were then cold anesthetized by packing them on ice for 15 min. Dissection was performed in chilled (approximately 10 °C) physiological saline (composition 440 mM NaCl, 11 mM KCl, 13 mM CaCl₂, 26 mM MgCl₂, 10 mM HEPES, pH 7.4 [adjusted with NaOH]). The details of dissection were described previously (21).

Mass Spectrometry and MALDI Imaging

A model 4800 MALDI-TOF/TOF analyzer (Applied Biosystems, Framingham, MA) equipped with a 200 Hz, 355 nm Nd:YAG laser was used for direct tissue analysis, brain extract quantitation, and MALDI imaging. Acquisitions were performed in positive ion reflectron mode. Instrument

parameters were set using the 4000 series Explorer software (Applied Biosystems). Mass spectra were obtained by averaging 900 laser shots covering mass range m/z 500–4000. MS/MS was achieved by 1 kV collision-induced dissociation (CID) using air. MALDI mass spectrometric imaging of *C. borealis* brain was performed as previously described (55). Imaging acquisition was performed using the 4800 Imaging application software (www.maldi-msi.org). To generate images, spectra were collected at 100 μm intervals in both the x and y dimensions across the surface of the sample. Each mass spectrum was generated by averaging 200 laser shots over the mass range m/z 800–2000. Individual spectra were acquired using 1.0 ns binning to yield 27 812 data points per spectrum. Image files were processed, and extracted ion images were created using the TissueView software package (Applied Biosystems, Framingham, MA).

Sample Preparation

Direct tissue analysis was performed as described previously (21). Briefly, the tissue was rinsed in a droplet of acidified methanol (90% methanol, 9% acetic acid, 1% water, v/v/v), desalted in a droplet of dilute DHB solution (10 mg/mL, aqueous), and placed on the MALDI plate. A droplet of 0.4 μL of standard mixed DHB matrix solution was deposited on top of the tissue placed on the MALDI target and allowed to crystallize at room temperature. Tissue extractions were performed by homogenizing in cooled acidified methanol as described elsewhere (30). The crude extracts were processed by C_{18} Ziptip according to the product instructions to remove lipids and salt before the formaldehyde labeling reaction.

Quantitation Using Isotopic Labeling

A 3 μL aliquot of tissue extract from brain or PO was labeled in solution by adding 0.7 μL of borane pyridine ($\text{C}_5\text{H}_8\text{BN}$, 120 mM in 10% methanol) and then mixing with formaldehyde (FH_2 , 15% in H_2O , 0.5 μL) for samples from unfed animals or deuterium formaldehyde (FD_2 , 15% in H_2O , 0.5 μL) for samples from fed animals. The samples were then placed in a 37 °C water bath for 20 min for the labeling reaction to complete. Samples from fed and unfed animals were then mixed in a 1:1 ratio. Each resulting sample was spotted on a MALDI plate twice, and each spot was analyzed twice, resulting in four replicate spectra. The spectra were analyzed manually, and the peak pairs generated from known neuropeptides were selected for quantitative analysis. The relative abundance ratio for each neuropeptide in fed crab versus unfed crab was determined by dividing heavy labeled peak intensity with light labeled peak intensity followed by averaging the ratios from the four replicate spectra. Student's t test was performed to evaluate the differences of each peptide between fed and unfed states, and the p value < 0.01 was considered as statistically significant.

Supporting Information Available

Reverse isotopic formaldehyde labeling and bar graphic representation for abundance ratios for neuropeptide expression in fed crabs versus unfed crabs. This material is available free of charge via the Internet at <http://pubs.acs.org>.

Author Information

Corresponding Author

* To whom correspondence should be addressed. E-mail: lli@pharmacy.wisc.edu. Phone: (608)265-8491. Fax: (608)262-5345.

Author Contributions

R.C. and L.L. designed research; R.C., L.H., S.S.C., and J.W. performed research; R.C. analyzed data; R.C. and L.L. wrote the paper.

Funding Sources

This work was funded by National Science Foundation CAREER Award (Grant CHE-0449991) and the National Institutes of Health through Grant 1R01DK071801. L.L. acknowledges an Alfred P. Sloan Research Fellowship.

Acknowledgment

The authors thank Dr. Amy Harms and Dr. Mike Sussman at the University of Wisconsin Biotechnology Center Mass Spectrometry Facility for access to the MALDI-TOF/TOF instrument. We also wish to thank Dr. Eve Marder at Brandeis University for valuable advice and helpful discussions for preparing the paper.

Abbreviations

MSI, mass spectrometric imaging; STNS, stomatogastric nervous system; PO, pericardial organ; MPC, median protocerebrum; DC, deutocerebrum; TC, tritocerebrum; AMPN, anterior medial protocerebral neuropil; PMPN, posterior medial protocerebral neuropil; ON, olfactory lobe; LAN, lateral antenna I neuropil; AnN, antenna II neuropil; CabTRP, *Cancer borealis* tachykinin-related peptide; AST, allatostatin; STG, stomatogastric ganglion; coc, circumoesophageal connective; CoG, commissural ganglia; DHB, 2,5-dihydroxybenzoic acid; HEPES, *N*-2-hydroxyethylpiperazine-*N'*-2-ethanesulfonic acid.

References

- Schwartz, M. W., Woods, S. C., Porte, D., Jr., Seeley, R. J., and Baskin, D. G. (2000) Central nervous system control of food intake. *Nature* 404, 661–671.
- Lin, X., Volkoff, H., Narnaware, Y., Bernier, N. J., Peyon, P., and Peter, R. E. (2000) Brain regulation of feeding behavior and food intake in fish. *Comp. Biochem. Physiol. A: Mol. Integr. Physiol.* 126, 415–434.
- Gao, Q., and Horvath, T. L. (2007) Neurobiology of feeding and energy expenditure. *Annu. Rev. Neurosci.* 30, 367–398.
- Jequier, E., and Tappy, L. (1999) Regulation of body weight in humans. *Physiol. Rev.* 79, 451–480.
- Valassi, E., Scacchi, M., and Cavagnini, F. (2008) Neuroendocrine control of food intake. *Nutr. Metab. Cardiovasc. Dis.* 18, 158–168.

6. Jing, J., Vilim, F. S., Horn, C. C., Alexeeva, V., Hatcher, N. G., Sasaki, K., Yashina, I., Zhurov, Y., Kupfermann, I., Sweedler, J. V., and Weiss, K. R. (2007) From hunger to satiety: Reconfiguration of a feeding network by *Aplysia* neuropeptide Y. *J. Neurosci.* 27, 3490–3502.
7. Volkoff, H. (2006) The role of neuropeptide Y, orexins, cocaine and amphetamine-related transcript, cholecystokinin, amylin and leptin in the regulation of feeding in fish. *Comp. Biochem. Physiol. A: Mol. Integr. Physiol.* 144, 325–331.
8. Volkoff, H., Canosa, L. F., Unniappan, S., Cerda-Reverter, J. M., Bernier, N. J., Kelly, S. P., and Peter, R. E. (2005) Neuropeptides and the control of food intake in fish. *Gen. Comp. Endocrinol.* 142, 3–19.
9. Woods, S. C., Figlewicz, D. P., Madden, L., Porte, D., Jr., Sipols, A. J., and Seeley, R. J. (1998) NPY and food intake: Discrepancies in the model. *Regul. Pept.* 75–76, 403–408.
10. Sweedler, J. V., Li, L., Rubakhin, S. S., Alexeeva, V., Dembrow, N. C., Dowling, O., Jing, J., Weiss, K. R., and Vilim, F. S. (2002) Identification and characterization of the feeding circuit-activating peptides, a novel neuropeptide family of *Aplysia*. *J. Neurosci.* 22, 7797–7808.
11. Nusbaum, M. P., and Beenhakker, M. P. (2002) A small-systems approach to motor pattern generation. *Nature* 417, 343–350.
12. Marder, E. (2000) Motor pattern generation. *Curr. Opin. Neurobiol.* 10, 691–698.
13. Arora, S., and Anubhuti (2006) Role of neuropeptides in appetite regulation and obesity--a review. *Neuropeptides* 40, 375–401.
14. de Bono, M., and Bargmann, C. I. (1998) Natural variation in a neuropeptide Y receptor homolog modifies social behavior and food response in *C. elegans*. *Cell* 94, 679–689.
15. Shen, P., and Cai, H. N. (2001) *Drosophila* neuropeptide F mediates integration of chemosensory stimulation and conditioning of the nervous system by food. *J. Neurobiol.* 47, 16–25.
16. Li, C., Kim, K., and Nelson, L. S. (1999) FMRFamide-related neuropeptide gene family in *Caenorhabditis elegans*. *Brain Res.* 848, 26–34.
17. Taghert, P. H. (1999) FMRFamide neuropeptides and neuropeptide-associated enzymes in *Drosophila*. *Microsc. Res. Tech.* 45, 80–95.
18. Dockray, G. J. (2004) The expanding family of -RFamide peptides and their effects on feeding behaviour. *Exp. Physiol.* 89, 229–235.
19. Marder, E., and Bucher, D. (2007) Understanding circuit dynamics using the stomatogastric nervous system of lobsters and crabs. *Annu. Rev. Physiol.* 69, 291–316.
20. Christie, A. E., Skiebe, P., and Marder, E. (1995) Matrix of neuromodulators in neurosecretory structures of the crab *Cancer borealis*. *J. Exp. Biol.* 198, 2431–2439.
21. Kutz, K. K., Schmidt, J. J., and Li, L. (2004) In situ tissue analysis of neuropeptides by MALDI FTMS in-cell accumulation. *Anal. Chem.* 76, 5630–5640.
22. Fu, Q., Goy, M. F., and Li, L. (2005) Identification of neuropeptides from the decapod crustacean sinus glands using nanoscale liquid chromatography tandem mass spectrometry. *Biochem. Biophys. Res. Commun.* 337, 765–778.
23. Li, L., Pulver, S. R., Kelley, W. P., Thirumalai, V., Sweedler, J. V., and Marder, E. (2002) Orcokinin peptides in developing and adult crustacean stomatogastric nervous systems and pericardial organs. *J. Comp. Neurol.* 444, 227–244.
24. Li, L., Kelley, W. P., Billimoria, C. P., Christie, A. E., Pulver, S. R., Sweedler, J. V., and Marder, E. (2003) Mass spectrometric investigation of the neuropeptide complement and release in the pericardial organs of the crab, *Cancer borealis*. *J. Neurochem.* 87, 642–656.
25. Ma, M., Wang, J., Chen, R., and Li, L. (2009) Expanding the crustacean neuropeptidome using a multifaceted mass spectrometric approach. *J. Proteome Res.* 8, 2426–2437.
26. Turton, M. D., O'Shea, D., Gunn, I., Beak, S. A., Edwards, C. M. B., Meeran, K., Choi, S. J., Taylor, G. M., Heath, M. M., Lambert, P. D., Wilding, J. P. H., Smith, D. M., Ghatei, M. A., Herbert, J., and Bloom, S. R. (1996) A role for glucagon-like peptide-1 in the central regulation of feeding. *Nature* 379, 69–72.
27. Batterham, R. L., Cowley, M. A., Small, C. J., Herzog, H., Cohen, M. A., Dakin, C. L., Wren, A. M., Brynes, A. E., Low, M. J., Ghatei, M. A., Cone, R. D., and Bloom, S. R. (2002) Gut hormone PYY3-36 physiologically inhibits food intake. *Nature* 418, 650–654.
28. Lawrence, C. B., Celsi, F., Brennand, J., and Luckman, S. M. (2000) Alternative role for prolactin-releasing peptide in the regulation of food intake. *Nat. Neurosci.* 3, 645–646.
29. Che, F.-Y., Yuan, Q., Kalinina, E., and Fricker, L. D. (2005) Peptidomics of Cpefat/fat mouse hypothalamus: Effect of food deprivation and exercise on peptide levels. *J. Biol. Chem.* 280, 4451–4461.
30. Ma, M., Chen, R., Sousa, G. L., Bors, E. K., Kwiatkowski, M. A., Goiney, C. C., Goy, M. F., Christie, A. E., and Li, L. (2008) Mass spectral characterization of peptide transmitters/hormones in the nervous system and neuroendocrine organs of the American lobster *Homarus americanus*. *Gen. Comp. Endocrinol.* 156, 395–409.
31. Hsu, J. L., Huang, S. Y., Chow, N. H., and Chen, S. H. (2003) Stable-isotope dimethyl labeling for quantitative proteomics. *Anal. Chem.* 75, 6843–6852.
32. Satake, H., Kawada, T., Nomoto, K., and Minakata, H. (2003) Insight into tachykinin-related peptides, their receptors, and invertebrate tachykinins: A review. *Zool. Sci.* 20, 533–549.
33. Severini, C., Improta, G., Falconieri-Erspamer, G., Salvadori, S., and Erspamer, V. (2002) The tachykinin peptide family. *Pharmacol. Rev.* 54, 285–322.
34. Otsuka, M., and Yoshioka, K. (1993) Neurotransmitter functions of mammalian tachykinins. *Physiol. Rev.* 73, 229–308.
35. Kalra, S. P., Dube, M. G., and Kalra, P. S. (1991) Neuropeptide K (NPK) suppresses copulatory behavior in male rats. *Physiol. Behav.* 49, 1297–1300.
36. Kalra, S. P., Sahu, A., Dube, G., and Kalra, P. S. (1991) Effects of various tachykinins on pituitary LH secretion,

- feeding, and sexual behavior in the rat. *Ann. N.Y. Acad. Sci.* 632, 332–338.
37. Peyon, P., Saied, H., Lin, X., and Peter, R. E. (2000) Preprotachykinin gene expression in goldfish brain: Sexual, seasonal, and postprandial variations. *Peptides* 21, 225–231.
38. Christie, A. E., Lundquist, C. T., Nassel, D. R., and Nusbaum, M. P. (1997) Two novel tachykinin-related peptides from the nervous system of the crab *Cancer borealis*. *J. Exp. Biol.* 200, 2279–2294.
39. Christie, A. E., Kutz-Naber, K. K., Stemmler, E. A., Klein, A., Messinger, D. I., Goiney, C. C., Conterato, A. J., Bruns, E. A., Hsu, Y. W., Li, L., and Dickinson, P. S. (2007) Midgut epithelial endocrine cells are a rich source of the neuropeptides APSGFLGMRamide (*Cancer borealis* tachykinin-related peptide Ia) and GYRKPPFNGSIFamide (Gly1-SIFamide) in the crabs *Cancer borealis*, *Cancer magister*, and *Cancer productus*. *J. Exp. Biol.* 210, 699–714.
40. Christie, A. E., Cashman, C. R., Stevens, J. S., Smith, C. M., Beale, K. M., Stemmler, E. A., Greenwood, S. J., Towle, D. W., and Dickinson, P. S. (2008) Identification and cardiotropic actions of brain/gut-derived tachykinin-related peptides (TRPs) from the American lobster *Homarus americanus*. *Peptides* 29, 1909–1918.
41. Elizabeth, A. S., Braulio, P., Emily, A. B., Patsy, S. D., and Andrew, E. C. (2007) Identification, physiological actions, and distribution of TPSGFLGMRamide: A novel tachykinin-related peptide from the midgut and stomatogastric nervous system of *Cancer* crabs. *J. Neurochem.* 101, 1351–1366.
42. Audsley, N., and Weaver, R. J. (2009) Neuropeptides associated with the regulation of feeding in insects. *Gen. Comp. Endocrinol.* 162, 93–104.
43. Brockmann, A., Annangudi, S. P., Richmond, T. A., Ament, S. A., Xie, F., Southey, B. R., Rodriguez-Zas, S. R., Robinson, G. E., and Sweedler, J. V. (2009) Quantitative peptidomics reveal brain peptide signatures of behavior. *Proc. Natl. Acad. Sci. U.S.A.* 106, 2383–2388.
44. Pascual, N., Maestro, J. L., Chiva, C., Andreu, D., and Belles, X. (2008) Identification of a tachykinin-related peptide with orexigenic properties in the German cockroach. *Peptides* 29, 386–392.
45. Chen, R., Ma, M., Hui, L., Zhang, J., and Li, L. (2009) Measurement of neuropeptides in crustacean hemolymph via MALDI mass spectrometry. *J. Am. Soc. Mass Spectrom.* 20, 708–718.
46. McGaw, I. J., and McMahon, B. R. (1995) The FMRFamide-related peptides F1 and F2 alter hemolymph distribution and cardiac output in the crab *Cancer magister*. *Biol. Bull.* 188, 186–196.
47. Bechtold, D. A., and Luckman, S. M. (2007) The role of RFamide peptides in feeding. *J. Endocrinol.* 192, 3–15.
48. Mercier, A. J., Friedrich, R., and Boldt, M. (2003) Physiological functions of FMRFamide-like peptides (FLPs) in crustaceans. *Microsc. Res. Tech.* 60, 313–324.
49. Kavaliers, M., Hirst, M., and Mathers, A. (1985) Inhibitory influences of FMRFamide on morphine- and deprivation-induced feeding. *Neuroendocrinology* 40, 533–535.
50. Fu, Q., Kutz, K. K., Schmidt, J. J., Hsu, Y. W., Messinger, D. I., Cain, S. D., de la Iglesia, H. O., Christie, A. E., and Li, L. (2005) Hormone complement of the *Cancer productus* sinus gland and pericardial organ: An anatomical and mass spectrometric investigation. *J. Comp. Neurol.* 493, 607–626.
51. Saideman, S. R., Ma, M., Kutz-Naber, K. K., Cook, A., Torfs, P., Schoofs, L., Li, L., and Nusbaum, M. P. (2007) Modulation of rhythmic motor activity by pyrokinin peptides. *J. Neurophysiol.* 97, 579–595.
52. Kirby, M. S., and Nusbaum, M. P. (2007) Central nervous system projections to and from the commissural ganglion of the crab *Cancer borealis*. *Cell Tissue Res.* 328, 625–637.
53. Schmidt, M., and Ache, B. W. (1994) Descending neurons with dopamine-like or with substance P/FMRamide-like immunoreactivity target the somata of olfactory interneurons in the brain of the spiny lobster, *Panulirus argus*. *Cell Tissue Res.* 278, 337–352.
54. Langworthy, K., Helluy, S., Benton, J., and Beltz, B. (1997) Amines and peptides in the brain of the American lobster: Immunocytochemical localization patterns and implications for brain function. *Cell Tissue Res.* 288, 191–206.
55. DeKeyser, S. S., Kutz-Naber, K. K., Schmidt, J. J., Barrett-Wilt, G. A., and Li, L. (2007) Imaging mass spectrometry of neuropeptides in decapod crustacean neuronal tissues. *J. Proteome Res.* 6, 1782–1791.