



Published in final edited form as:

J Am Acad Audiol. 2010 January ; 21(1): 35–43.

Performance Overtime on Adults with Simultaneous Bilateral Cochlear Implants

Son-A Chang, Richard Tyler, Camille Dunn, Haihong Ji, Shelley Witt, Bruce Gantz, and Marlan Hansen

Department of Otolaryngology Head and Neck Surgery, University of Iowa

Son-A Chang: son-a-chang@uiowa.edu; Camille Dunn: camille-dunn@uiowa.edu; Shelley Witt: shelly-witt@uiowa.edu; Bruce Gantz: bruce-gantz@uiowa.edu; Marlan Hansen: marlan-hansen@uiowa.edu

Abstract

Background—Maximum performance and long term stability of bilateral cochlear implants has become an important topic because there has been increasing recipients of bilateral cochlear implants.

Purpose—To determine the performance overtime (up to 6 years) of subjects with simultaneous bilateral cochlear implants (CI+CI) on localization and word recognition.

Research Design—Overtime investigation of word recognition in quiet (CNC) and sound localization in quiet (Everyday Sounds Localization test).

Study sample—The subjects were 48 adults who received their cochlear implants at the University of Iowa.

Results—For word recognition, percent correct scores continuously improved up to 1 year post-implantation with the most benefit occurring within the first month of implantation. In observing up to 72 months, the averaged scores reached to the plateau of about 63% correct in CNC after 2 years (N = 31). But, when we followed 17 subjects who have complete data set between 6 months and 48 + months, word recognition scores were significantly different from 12 months to 48+ months, which implies binaural advantages need more time to be developed. Localization test results suggested that the root mean square (RMS) error scores continuously improved up to 1 year post-implantation with most benefits occurring within the first 3 months. After 2 years, the averaged scores reached to the plateau of about 20° RMS error (N = 27). When we followed 10 subjects who have complete data set between 6 months and 48+ months, localization scores were not improved from 12 months to 48 + months. There were large individual differences in performance overtime.

Conclusion—In general, substantial benefits in both word recognition and localization were found over the first 1–12 months post-implantation for subjects who received simultaneous bilateral cochlear implants. These benefits were maintained overtime up to 6 years post implantation.

Keywords

simultaneous bilateral cochlear implants; speech recognition; localization

Introduction

Cochlear implantation has become a well-known remediation for severe-to-profound deafness. However, because of its irreversible changes to the cochlea and life-long use, it is important to verify the long-term benefits and stability of cochlear implantation. For the past 30 years, researchers have inundated the literature with studies investigating the benefits and long term performance of unilateral cochlear implants (CI-only) in people with postlingual severe to profound hearing loss. Most of this research has focused on speech perception and has excluded localization skills, especially with regard to data overtime. The studies on speech perception abilities in CI-only users have shown that most improvements occur within the first year (Helms et al., 1997; Hamzavi et al., 2003), or up to two years (Tyler et al., 1997; Ruffin et al., 2007). More recently, research has shifted to studying the benefits of bilateral cochlear implantation (for example, Gantz et al., 2002; Muller et al., 2002; Tyler et al., 2003; van Hoesel, 2004; Schleich et al., 2004; Ramsden et al., 2005; Litovsky et al., 2006; Ricketts et al., 2006; Buss et al., 2008). However, very little research has reported on the maximum performance and long term stability of bilateral cochlear implants. This evaluation seems crucial given that you are implanting both ears and not preserving one for future medical intervention.

Research studying the benefits of word recognition in quiet on bilateral cochlear implant users (CI+CI) during the first six (Laszig et al., 2004; Litovsky et al., 2006) to 12 months (Mosnier et al., 2009; Buss et al., 2008) suggests that most users have continuous significant improvements in performance, with improvements occurring as soon as 1 month after implantation. Furthermore, Buss et al. (2008) proposed that the 1 month score might be a rough predictor for performance after 1 year. Eapen et al. (2009) observed performance between one and four years and showed that CI+CI users continue to improve beyond the one year point up to 4 years. Based on these results, it might be that we can expect some long term changes in performance with CI+CI recipients that have not been observed in CI-only subjects.

Research studying long term benefits of localization longer than 12 months after implantation with CI+CI recipients is limited. Grantham et al. (2007) investigated the localization abilities of a limited number of CI+CI subjects at four to six months post-implantation and then again at 15 months post-implantation. They found that many subjects reached a plateau in performance around four to six months, which is quicker than the plateau demonstrated in the literature for speech perception. In contrast, Tyler et al. (2006) observed a group of CI-only subjects overtime for up to 72 months and found that patients showed a similar pattern to speech perception with improvements in localization. However, Koch et al. (2009) demonstrated no significant improvement overtime between three, six, and 12 months with a group of CI+CI users. To better confirm the overtime benefit of localization for CI+CI recipients, a longer observation period with a larger group of subjects is needed.

The purpose of the present study was to evaluate overtime trends in word recognition and sound localization by observing data up to 6 years post implantation on individuals with CI+CI.

Method

Subjects

We studied 48 bilateral subjects who were simultaneously implanted between 1997 and 2008 all in one surgical procedure. We excluded sequentially implanted bilateral subjects. The subjects were all postlingually deafened adults with a mean age of 55.7 years at implantation (ranging from 20 to 81 years; $SD = 14.0$ years) and a mean of duration of deafness of 7.6 years ($SD = 8.87$ years). The mean number of years of cochlear implant experience was 5.4 (ranging from 0.4 to 10.8 years; $SD = 2.9$ years). Among 48 subjects, 30 were female and 18 were male. Twenty-seven out of the 48 subjects (56%) were implanted with Advanced Bionics Corporation

devices in which the oldest version was a Clarion HiFocus 1.2. Twenty-one of the 48 subjects (44%) were implanted with Cochlear Corporation devices in which the oldest version was a Nucleus CI 24M. Table 1 gives a summary of the internal device distribution. Twenty subjects (41.7%) experienced external device changes or upgrades during the observation period.

Word Recognition Test in Quiet

The Consonant-Nucleus-Consonant (CNC) test (Tillman & Carhart, 1966), presented in quiet at 70 dB (C), was used as the monosyllable word recognition test. Two lists were presented to each subject and an average of the two was taken for the final score. All subjects were tested in a double-walled sound-treated room by experienced audiologists.

Localization in Quiet

An Everyday Sounds Localization Test (Dunn et al., 2005) presented in quiet in a double-walled sound-treated room was used to evaluate localization abilities. This test consisted of 96 random presentations of 16 different everyday sounds (e.g. telephone ringing, instrument playing, and dog barking). The test stimuli is presented in the frontal horizontal plane using eight loudspeakers placed 15.5° degrees apart, creating a 108° arc. The signals were presented at approximately 70dB (C). The score was derived from the RMS error between the source loudspeaker and the subject response loudspeaker. Chance level of this test is 43° RMS error.

Results

1. Speech perception: Word recognition in quiet

Figure 1A shows the average overtime bilateral word recognition performance for all 48 CI +CI subjects from pre-implantation (best aided) through 72 months (6 years) post-implantation. All subjects had overtime multiple data points, however, not all subjects had data points at every time point overtime. Data from a minimum of 13 subjects was included at each averaged data point. A repeated-measures analysis of variance (ANOVA) showed that the first 12 months after implantation showed the largest incremental improvement (8% at pre-implantation to 61% at 12 months) in word recognition with an additional benefit of 4% between 12 and 24 months. Overtime word recognition data after 24 months did not show any further improvements through 72 months. CNC scores for the 48 subjects ranged from 0% to 94%. Fifteen subjects (31.3%) scored between 80% to 94% (mean 87%). Eighteen subjects (37.5%) scored between 64% to 79% (mean 70.5%). Fifteen subjects (31.3%) scored between 0% to 63% (mean 40.8%).

In Figure 1B, we examined in more detail the average performance over the first 12 months of all 48 subjects using more discreet time increments (pre-implant (0 months), 1, 3, 6 and 12 months post-implantation). In this figure, a minimum of 11 subjects was averaged at each time point. Word recognition scores improved dramatically between pre-implant scores and 1 month scores with increases from 8% to 49% (41% improvement), respectively. Furthermore, there were 5%, 1% and 6% improvements between 1 month and 3 months, between 3 and 6 months, and between 6 and 12 months post-implantation respectively.

As mentioned before, Figures 1A and 1B include a different set of subjects for each data point. This is because some subjects had not reached 72 months of experience and because some subjects have chosen to drop out of research participation. So, in order to minimize subject variability, we selected a subset of 23 subjects who all have data at pre-implant, 6 and 12 months post-implantation. In Figure 1C, we show averaged data from these 23 subjects. We did not include 1 and 3 month post-implantation data because not every subject had data at those points in time. The largest increment in performance occurred between the pre-implant score (6% correct) and the 6 months post-implantation score (57% correct) with an additional small

improvement of 7% between 6 and 12 months post-implantation. A repeated-measures analysis of variance revealed that there was a significant improvement in word recognition scores after implantation, $F(1.5, 32.3) = 108.7$, $p < .001$. Post hoc comparisons using a Bonferroni adjustment revealed a significant improvement between the pre-implant and 6 months post-implantation score ($p < .001$) and between the pre-implant and 12 months post-implantation score ($p < .001$). No significant difference was found between the 6 months and 12 months post-implantation scores ($p = .06$).

Figure 1D demonstrates individual word recognition performance during the first 12 months post-implantation for the same subset of 23 subjects shown in Figure 1C. The results showed that for 19 of the 23 subjects, the first 6 months led to major improvements in word recognition scores compared to pre-implant scores. Two subjects showed major improvements in the last half of the year rather than the first half of the year and two subjects demonstrated less than a 20% improvement in scores between pre-implantation and 12 months post-implantation.

In reviewing the data beyond 12 months post-implantation (not shown), of the 19 subjects who showed improvements within the first 6 months post-implantation, 12 did not show any additional changes in scores; 3 showed a 20% or more improvement (two showed an improvement at 24 months and one showed an improvement at 36 months); and 4 did not have any more data after 12 months. Of the two subjects who showed improvement between 6 and 12 months post-implantation, no additional improvements were noted. In the two subjects who had less than a 20% improvement over the first 12 months, one showed an additional 20% increase in scores at 36 months and the other showed no further improvement after 12 months.

In figure 2, we studied the performance of a subset of 17 subjects who all have data points at every time period except pre-implant (6 individuals did not have pre-implant data) over the course of 4 years. The purpose of this analysis was to study word recognition performance after the first year of implant use. A repeated-measures analysis of variance revealed that there was a significant difference in CNC scores post-implantation, $F(4, 51) = 79.24$, $p < .001$. Post hoc comparisons using Tukey adjustment revealed that pre-implant scores were significantly different to all the other time points ($p < .05$). The reason that we used Tukey adjustment instead of Bonferroni in this analysis was that Bonferroni adjustment was too conservative to be applied to the more than four group comparisons. Forty-eight+ month results ($M = 69.0$, $SD = 11.1$) were significantly different from 12 month results ($M = 54.1$, $SD = 14.1$, $p < .05$) although all the adjacent time points from 12 months to 48+ months were not significantly different each other. While this analysis only included 17 subjects overtime, we found that the average scores of all 48 subjects and the 17 subjects who have complete data set between pre-implant and 48+ months are similar.

2. Localization

Figure 3A shows the average overtime localization performance from a total of 47 CI+CI subjects from pre-implantation through 72 months (6 years) post-implantation. Again, all subjects had overtime multiple data, however, not all subjects had data points at every time point overtime. Data from a minimum of 12 subjects was included at each averaged data point. This figure shows that the largest improvements occurred between pre-implantation (RMS Error = 37°) and 12 months post-implantation (RMS Error = 22°). Additional benefits occurred between 12 and 24 months with RMS error improvements from 22° to 19° , respectively. After 24 months, the localization scores showed a plateau through 72 months which was the same pattern as in the word recognition performance described in Figure 1. Localization scores for the 47 subjects ranged from 10° to 47° . Eighteen subjects (38.3%) scored between 10° to 15° (mean 13.2°). Fifteen subjects (31.9%) scored between 16° to 21° (mean 18.6°). Fourteen subjects (29.8%) scored between 22° to 47° (mean 30.5°).

In Figure 3B we examined in more detail the average performance over the first 12 months of the same 47 subjects shown in Figure 3A using more discrete time increments (pre-implant (0 months), 1, 3, 6 and 12 months post-implantation). In this figure, a minimum of 12 subjects were averaged at each time point. This figure shows an improvement of 7° in average performance from pre-implant (RMS error = 37°) to 1 month post-implant (RMS error = 30°) and an additional improvement of 5° from 1 month to 3 months (RMS error = 25°). From 3 months to 12 months, a small improvement of 3° RMS error was shown.

As mentioned before, Figures 3A and 3B include a different set of subjects at each data point. In order to minimize subject variability, in Figure 3C we show the averaged results from a subset of 13 subjects who all have data at pre-implant, 6 and 12 months post-implantation. We did not include 1 and 3 month post-implantation results because not all of these subjects had data at those points in time. The largest increment of improvement occurred between the pre-implant score (RMS error = 41°) and the 6 month post-implantation score (RMS error = 29°) with an additional small improvement of 6° between 6 and 12 months post-implantation. A repeated-measures analysis of variance revealed that there was a significant improvement in localization scores after implantation, $F(2, 26) = 12.75, p < .001$. Post hoc comparisons using a Bonferroni adjustment revealed a significant improvement between the pre-implant and 6 months post-implantation score ($p < .05$) and between the pre-implant and 12 months post-implantation score ($p < .01$). No significant difference was found between the 6 months and 12 months post-implantation scores ($p = .08$).

Figure 3D shows individual localization performance during the first 12 months post-implantation of the same subset of 13 subjects shown in Figure 3C. The results showed that for 8 of the 13 subjects, the first 6 months led to large improvements in localization scores compared to pre-implant scores, with 3 showing additional improvements after 6 months and 10 showing a plateau in scores after 6 months post-implantation. On the other hand, 3 subjects did not show an improvement in scores between pre-implant and 6 months, but did show an improvement between 6 and 12 months post-implantation. Two subjects did not show an improvement between pre-implant and 12 months post-implantation.

In reviewing the data beyond 12 months post-implantation (not shown) for this subset of 13 subjects, of the 8 subjects who showed major improvement within the first 6 months, five subjects did not have additional increases in scores and three did not have data beyond 12 months. Of the three who showed major improvement between 6 and 12 months, one did not show additional improvements; and two showed further improvement (one improved from 30° at 12 months to 17° at 48 months and the other improved from 29° at 12 months to 17° at 24 months). Of the two subjects who did not have an improvement in scores between pre-implant and 12 months, one did not have further changes in scores and one did not have additional data.

Figure 4 shows localization results for a subset of 10 subjects who all have data over the course of 4 years. All 10 subjects have data points in every time period except pre-implant (6 pre-implant data missing). A repeated-measures analysis of variance revealed that there is a significant difference in localization scores post-implantation, $F(4, 30) = 14.62, p < .001$. Post hoc comparisons using Tukey adjustment revealed that pre-implant scores were significantly different from all other time points ($M = 42.5, SD = 12.8, p < .05$). Comparisons between all other data points from 12 to 48+ months post-implantation were not significantly different each other. As with speech perception, while this analysis only included 10 subjects overtime, we found that the average scores of all 48 subjects and the 10 subjects who have complete data set between pre-implant and 48+ months are similar.

Discussion

The purpose of the present study was to evaluate overtime trends in word recognition and sound localization by observing data up to 6 years post implantation on postlingual adults with CI+CI.

1. Speech perception

The results from this study demonstrated that word recognition performance in CI+CI subjects showed substantial improvement over the first 1–12 months post-implantation. This is consistent with previous studies that have looked at bilateral data overtime (Laszig et al., 2004; Litovsky et al., 2006; Buss et al., 2008; Mosnier et al., 2009; Koch et al., 2009). Buss et al. (2008) suggested that 1 month performance might be a rough predictor of 1 year performance post-implantation. Although we only looked at 11 subjects (Figure 1B), most of the improvement of these 11 subjects occurred very quickly within the first month after CI+CI experience with average improvement being 41%. Litovsky et al. (2006) also showed about 40% improvement in CNC words with 33 CI+CI subjects within the first month of implantation. This might suggest that attention should be placed on trying to maximize performance during the very early stages of implant experience. Several studies looking at the overtime results of CI-only subjects also report significant benefit from the cochlear implant after only 1 month of use (Valimaa et al., 2002; Hamzavi et al., 2003). Interestingly, while Tyler et al. (1997) demonstrated that CI-only subjects showed almost immediate improvement after switch-on in consonant perception, this improvement was not observed with the NU-6 word test. While we don't feel that in quiet this would result in a significant difference in scores, it should be noted that some of the comparisons used a different dB level for word presentation (e.g. Litovsky et al. 2006 used 65 dB SPL rather than 70 dB(C) as used in our study).

Studies observing performance up to 6 months after implantation (Laszig et al., 2004; Litovsky et al., 2006; Buss et al., 2008; Mosnier et al., 2009) have shown improvements in this 6 month stage of implantation. Other studies observing performance through 12 months have shown that performance continues to improve in the later stage (6–12 months) as well (Koch et al., 2009; Mosnier et al., 2009; Buss et al., 2008). In this study, we demonstrated a significant improvement in CI+CI performance from pre-implant to 6 months post-implantation ($p < .001$) in the same subjects. From 6 months to 12 months post-implantation, improvement also approached a significant level ($p = .06$).

After 24 months, in our study, on average as a group ($n = 31$) there was no further significant improvement in word recognition. We did find that performance was stable after 24 months which was similar to the trend found with some CI-only results (Hamzavi et al., 2003). More specifically, Ruffin et al. (2007) found no major improvement or decrement after 24 months post operation in CI-only subjects in an analysis of subjects over 120 months post-implantation.

When we analyzed individual data overtime, we observed that some subjects had improvements up to 24 months and then plateaued while others showed improvements even later up to 48 months post-implantation. Eapen et al. (2009) analyzed CNC scores of CI+CI subjects from 1 year to 4 years post-implantation. They found binaural scores were significantly improved overtime every year. In our study, when we observed the same subjects ($n = 17$) overtime through 48+ months, we also found significant improvement in word recognition, but only when comparing 12 months data to the 48+ months data. Most improvements in bilateral scores occurred within 1 year post-implantation. However, when the same subjects were observed overtime, we revealed that there can be a significant improvement after more than 4 years of use of CI+CI.

When we look at the most recent CI+CI average word recognition scores in this study and compare these results to the literature on CI-only subjects, we find an interesting difference. In our study, the CNC scores for CI+CI subjects were 61% at 12 months (N = 40) and 66% at 72 months (N = 14) post-implantation. Consistent with Litovsky et al. (2006) who reported 60% in CI+CI scores in CNC words at 6 months and Eapen et al. (2009) who reported 70% correct at a 4 year point in time. However, Helms et al. (1997) reported about 50% correct in monosyllable word recognition at 12 months post-implantation in 25 CI-only subjects and Hamzavi et al. (2003) reported 41% correct for monosyllable words at 24 months in 45 CI-only subjects. Ruffin et al. (2007) reported the CNC performance for different age groups which can be averaged from age 20 to 80 as 55% correct at 24 months. Thus, it seems that CI+CI scores are 5 – 20% better than CI-only scores. We also observed that about one third of a total subjects showed higher than 80% correct in CNC test.

However, a possible caveat to this comparison, which should be considered, is the technological changes which might influence the performance. Krueger et al. (2008) longitudinally followed more than 20 years of CI-only patients and divided them into 5 groups according to device generation. The performance discrepancy is as big as about 45% between the earliest devices (around 10% correct) and the newest devices (around 55% correct) both at 12 months post-implantation. The earliest devices were Nucleus 22 systems using an F0/F2 strategy while the newest devices were CII or HiRes90K (Advanced Bionics), Freedom (Cochlear), or C40+ and Pulsar (Med El) systems. The subjects in this study were using the newer devices. Thus, technology could be a contributing factor in the difference in scores shown between the CI+CI scores from our study and CI-only findings in the literature.

We also cannot overlook the influence of test materials. Research has shown that test materials can influence the range of results. Tyler et al. (1997) discussed the difference in improvement with regard to duration of cochlear implant use due to the different test materials used. Wackym (2007) found that more challenging tests or test conditions can show more binaural benefits for bilateral cochlear implant patients compared to easier test conditions. It has also been proposed that we need specially designed tests for bilateral patients to adequately measure performance (Tyler et al., 2006).

2. Localization

As with word recognition, we observed that CI+CI subjects showed substantial improvement in localization over the first 1–12 months post-implantation. We found that the greatest improvement in localization (decreased 7° RMS error scores) occurred after only 1 month of implant use. This is similar to the improvement we witnessed with word recognition performance. However, with localization we observed additional improvements between 1 and 3 months (decreased 5° RMS error scores) post implantation after the greatest improvement found at 1 month. With word recognition, we did not find as much improvement between 1 and 3 months post-implantation. This is consistent with earlier work that showed benefits in localization for some postlingually deafened adults at 3 months post-implantation (Tyler et al., 2002). Grantham et al. (2007) found that the majority of their patients showed improvement in localization within 6 months post-implantation which they felt was faster growth than speech perception results. However, in our data, speech perception performance improves faster than localization although both listening skills improve significantly within 6 months post-implantation.

Overall duration of improvement for localization was similar to word recognition. Major improvement occurred within 6 months and for some subjects localization improvement extended to 24 months. When we compared pre-implant, 6, and 12 month data in the same subjects (n = 13), we could find significant improvement up to 6 months and a significance difference between 6 and 12 months (P = .008) post-implantation performance. Grantham et

al. (2007) reported that many CI+CI subjects reached a plateau in performance around 4 to 6 months for localization. On the other hand, Nopp et al. (2004) indicated that some subjects showed extended improvement over 12 months post-implantation. But, they reported that the major improvement still occurred within 12 months, as similar to speech perception. Interestingly, Koch et al. (2009) demonstrated no significant improvement in localization overtime between 3, 6, and 12 months with a group of CI+CI users.

After 24 months post implantation, our study showed that localization scores leveled off and were consistent with 72 months post-implantation performance. However, if you look at individual data, we found several subjects who showed an extended improvement period up to 48 months. Unlike with word recognition, there was no improvement present from 1 to 4 years post-implantation.

In this study, we observed how the bilateral listening performance changed overtime. This observation is important when tailoring rehabilitation programs for CI+CI users. This study suggests that it might be beneficial to provide adult CI+CI users with focused auditory rehabilitation training during the first 12 months post-implantation in an attempt to further increase the improvements that are seen naturally with general listening experience. However, a controlled comparison study of the benefits of auditory training in the early stages following implantation would be needed to directly show this benefit.

3. Summary

In the present study, we observed many trends which were consistent with previous studies (Nopp et al., 2004; Dunn et al., 2005; Ching et al., 2007). In short, improvement patterns can vary. We found a range of performance with some subjects reaching a performance plateau at 1 month post-implantation and others who continuously improved until 48 months post-implantation. Although individual results showed a variety of performance, in general, the largest improvement occurred within 6 months post-implantation for both localization and speech perception.

The results of this study can be valuable to counsel eligible candidates of simultaneous bilateral implantation preoperatively. In addition to this, these can be valuable information for the professionals who are planning postoperative aural rehabilitation program for this population.

In this study we looked at the bilateral performance overtime and not necessarily the binaural advantage. This could provide some evidence of binaural advantages of simultaneous bilateral implantation albeit indirect. Future studies with specially designed tests looking at the binaural advantage overtime would be interesting and beneficial.

Acknowledgments

This research was supported in part by research grant 5 P50 DC00242 from the National Institutes on Deafness and Other Communication Disorders, National Institutes of Health; grant MO1-RR-59, National Center for Research Resources, General Clinical Research Centers Program, National Institutes of Health; the Lions Clubs International Foundation; and the Iowa Lions Foundation.

Abbreviations

CI+CI	simultaneous bilateral cochlear implants
CI-only	unilateral cochlear implant
RMS error	Root Mean Square error

References

- Buss E, Pillsbury HC, Buchman CA, Pillsbury CH, Clark MS, Haynes DS, Labadie RF, Amberg S, Roland PS, Kruger P, Novak MA, Wirth JA, Black JM, Peters R, Lake J, Wackym PA, Firszt JB, Wilson BS, Lawson DT, Schatzer R, D'Haese PS, Barco AL. Multicenter U.S. bilateral MED-EL cochlear implantation study: speech perception over the first year of use. *Ear Hear* 2008;29(1):20–32. [PubMed: 18091099]
- Ching TY, van Wanrooy E, Dillon H. Binaural-bimodal fitting or bilateral implantation for managing severe to profound deafness: a review. *Trends Amplif* 2007;11(3):161–92. [PubMed: 17709573]
- Dunn CC, Tyler RS, Witt SA. Benefit of wearing a hearing aid on the unimplanted ear in adult users of a cochlear implant. *J Speech Lang Hear Res* 2005;48(3):668–80. [PubMed: 16197280]
- Eapen RJ, Buss E, Adunka MC, Pillsbury HC 3rd, Buchman CA. Hearing-in-noise benefits after bilateral simultaneous cochlear implantation continue to improve 4 years after implantation. *Otol Neurotol* 2009;30(2):153–9. [PubMed: 19180675]
- Gantz BJ, Tyler RS, Rubinstein JT, Wolaver A, Lowder M, Abbas P, Brown C, Hughes M, Preece JP. Binaural cochlear implants placed during the same operation. *Otol Neurotol* 2002;23(2):169–180. [PubMed: 11875346]
- Grantham DW, Ashmead DH, Ricketts TA, Labadie RF, Haynes DS. Horizontal-plane localization of noise and speech signals by postlingually deafened adults fitted with bilateral cochlear implants. *Ear Hear* 2007;28(4):524–41. [PubMed: 17609614]
- Grantham DW, Ricketts TA, Ashmead DH, Labadie RF, Haynes DS. Localization by postlingually deafened adults fitted with a single cochlear implant. *Laryngoscope* 2008;118(1):145–51. [PubMed: 17975505]
- Koch DB, Soli SD, Downing M, Osberger MJ. Simultaneous bilateral cochlear implantation: prospective study in adults. *Cochlear Implants Int*. 2009 Feb 26;
- Hamzavi J, Baumgartner WD, Pok SM, Franz P, Gstoettner W. Variables affecting speech perception in postlingually deaf adults following cochlear implantation. *Acta Otolaryngol* 2003;123(4):493–8. [PubMed: 12797584]
- Helms J, Müller J, Schön F, Moser L, Arnold W, Janssen T, Ramsden R, von Ilberg C, Kiefer J, Pfennigdorf T, Gstöttner W, Baumgartner W, Ehrenberger K, Skarzynski H, Ribari O, Thumfart W, Stephan K, Mann W, Heinemann M, Zorowka P, Lippert KL, Zenner HP, Bohndord M, Hüttenbrink K, Hochmair-Desoyer I, et al. Evaluation of performance with the COMBI40 cochlear implant in adults: a multicentric clinical study. *ORL J Otorhinolaryngol Relat Spec* 1997;59(1):23–35. [PubMed: 9104746]
- Krueger B, Joseph G, Rost U, Strauss-Schier A, Lenarz T, Buechner A. Performance groups in adult cochlear implant users: speech perception results from 1984 until today. *Otol Neurotol* 2008;29(4):509–12. [PubMed: 18520586]
- Laszig R, Aschendorff A, Stecker M, Müller-Deile J, Maune S, Dillier N, Weber B, Hey M, Begall K, Lenarz T, Battmer RD, Bohm M, Steffens T, Strutz J, Linder T, Probst R, Allum J, Westhofen M, Doering W. Benefits of bilateral electrical stimulation with the nucleus cochlear implant in adults: 6-month postoperative results. *Otol Neurotol* 2004;25(6):958–68. [PubMed: 15547426]
- Litovsky R, Parkinson A, Arcaroli J, Sammeth C. Simultaneous bilateral cochlear implantation in adults: a multicenter clinical study. *Ear Hear* 2006;27(6):714–31. [PubMed: 17086081]
- Nopp P, Schleich P, D'Haese P. Sound localization in bilateral users of MED-EL COMBI 40/40+ cochlear implants. *Ear Hear* 2004;25(3):205–14. [PubMed: 15179112]
- Mosnier I, Sterkers O, Bebear JP, Godey B, Robier A, Deguine O, Fraysse B, Bordure P, Mondain M, Bouccara D, Bozorg-Grayeli A, Borel S, Ambert-Dahan E, Ferrary E. Speech performance and sound localization in a complex noisy environment in bilaterally implanted adult patients. *Audiol Neurootol* 2009;14(2):106–14. [PubMed: 18832816]
- Muller J, Schon F, Helms J. Speech understanding in quiet and noise in bilateral users of the MED-EL COMBI 40/40+ cochlear implant system. *Ear Hear* 2002;23(3):198–206. [PubMed: 12072612]
- Ramsden R, Greenham P, O'Driscoll M, Mawman D, Proops D, Craddock L, Fielden C, Graham J, Meerton L, Verschuur C, Toner J, McAnallen C, Osborne J, Doran M, Gray R, Pickerill M. Evaluation

- of bilaterally implanted adult subjects with the nucleus 24 cochlear implant system. *Otol Neurotol* 26:988–998. [PubMed: 16151348]
- Ricketts TA, Grantham DW, Ashmead DH, Haynes DS, Labadie RF. Speech recognition for unilateral and bilateral cochlear implant modes in the presence of uncorrelated noise sources. *Ear Hear* 2006;27(6):763–73. [PubMed: 17086085]
- Ruffin CV, Tyler RS, Witt SA, Dunn CC, Gantz BJ, Rubinstein JT. Long-term performance of Clarion 1.0 cochlear implant users. *Laryngoscope* 2007;117(7):1183–90. [PubMed: 17603317]
- Schleich P, Nopp P, D’Haese P. Head shadow, squelch, and summation effects in bilateral users of the MED-EL COMBI 40/40+ cochlear implant. *Ear Hear* 2004;25(3):197–204. [PubMed: 15179111]
- Tillman, TW.; Carhart, R. An expanded test for speech discrimination utilizing CNC monosyllabic words. USAF School of Aerospace Medicine, Brooks Air Force Base; Texas: 1966. Northwestern University Auditory Test No. 6 Technical Report No. SAM-TR-66–55
- Tyler RS, Parkinson AJ, Woodworth GG, Lowder MW, Gantz BJ. Performance overtime of adult patients using the Ineraid and Nucleus cochlear implants. *J Acoust Soc Am* 1997;102(1):508–522. [PubMed: 9228814]
- Tyler RS, Gantz BJ, Rubinstein JT, Wilson BS, Parkinson AJ, Wolaver A, Preece JP, Will S, Lowder MW. Three-month results with bilateral cochlear implants. *Ear Hear* 2002;23(1 Suppl):80S–89S. [PubMed: 11883771]
- Tyler RS, Dunn CC, Witt SA, Preece JP. Update on bilateral cochlear implantation. *Curr Opin Otolaryngol Head Neck Surg* 2003;11:388–393. [PubMed: 14502072]
- Tyler RS, Noble W, Dunn C, Witt S. Some benefits and limitations of binaural cochlear implants and our ability to measure them. *Int J Audiol* 2006;45(Supplement 1):S113–S119. [PubMed: 16938783]
- Välilä TT, Määttä TK, Löppönen HJ, Sorri MJ. Phoneme recognition and confusions with multichannel cochlear implants: consonants. *J Speech Lang Hear Res* 2002;45(5):1055–69. [PubMed: 12381060]
- van Hoesel RJ. Exploring the benefits of bilateral cochlear implants. *Audio Neurotol* 2004;9(4):234–46.
- Verschuur CA, Lutman ME, Ramsden R, Greenham P, O’Driscoll M. Auditory localization abilities in bilateral cochlear implant recipients. *Otol Neurotol* 2005;26(5):965–71. [PubMed: 16151344]
- Wackym PA, Runge-Samuelson CL, Firszt JB, Alkaf FM, Burg LS. More challenging speech-perception tasks demonstrate binaural benefit in bilateral cochlear implant users. *Ear Hear* 2007;28(2 Suppl): 80S–85S. [PubMed: 17496654]

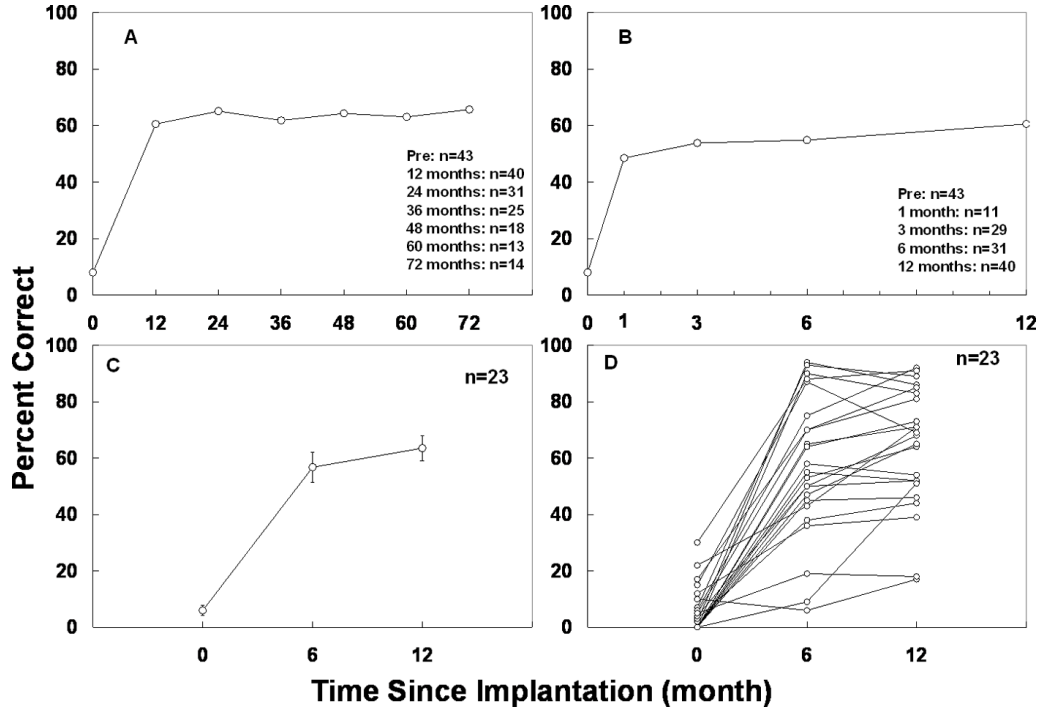


Figure 1. Word recognition performance over time. Results are expressed as percent correct and error bars indicate standard errors. 1A shows the average over time bilateral word recognition performance for all 48 CI+CI subjects from pre-implantation through 72 months (6 years) post implantation. 1B shows the average performance over the first 12 months for all 48 subjects with more discreet time increments. It should be noted that not all of the 48 subjects have data at each data point. 1C shows the average performance for 23 subjects who all have data at pre-implant, 6, and 12 months post-implantation. 1D shows individual results for pre-implantation, 6, and 12 months post-implantation for the same 23 subjects shown in 1C.

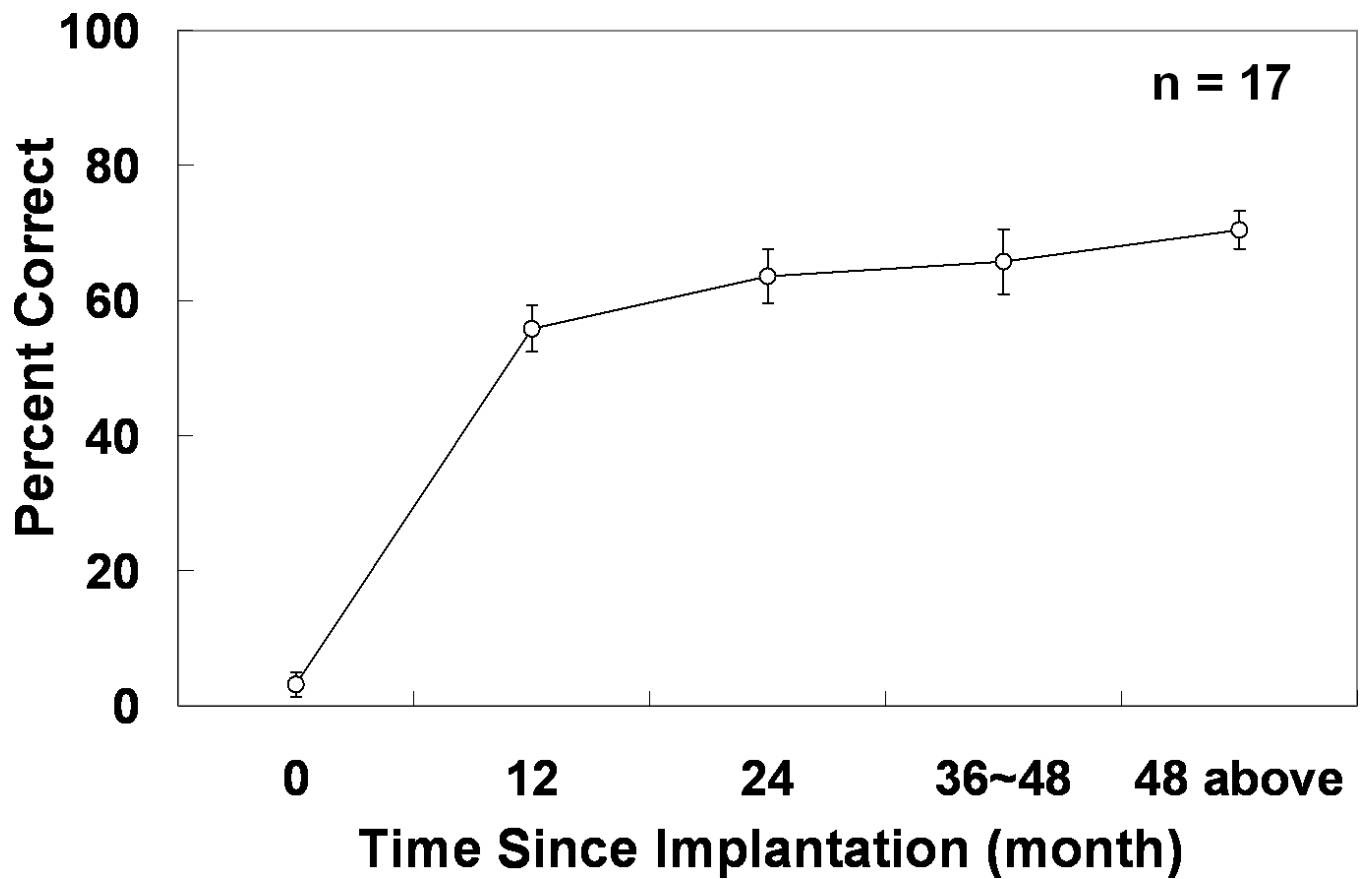


Figure 2.

Word recognition performance overtime for 17 subjects who all have data points at every time period except pre-implantation (6 individuals do not have pre-implant data. Results are expressed as percent correct and error bars indicate standard errors.

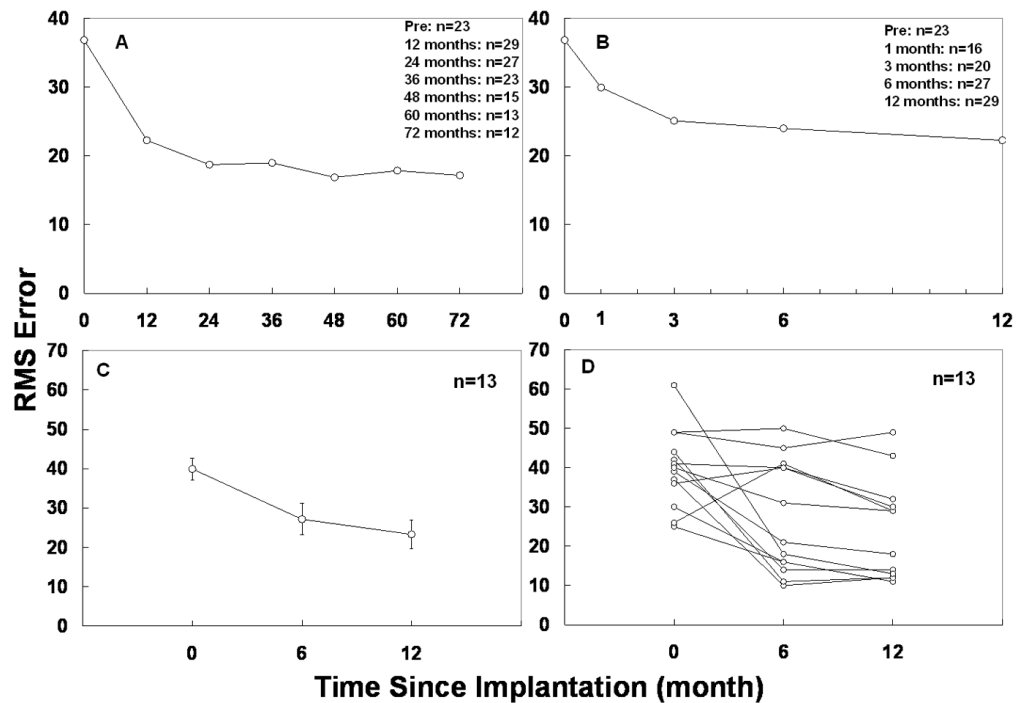


Figure 3. Localization performance overtime. Results are expressed as RMS error scores and error bars indicate standard errors. 3A shows the average over time localization performance from a total of 47 subjects from pre-implantation through 72 months (6 years) post-implantation. 3B shows data from the same subjects as in 3A detailing in more discrete time increments the average performance over the first 12 months. It should be noted that not all of the 47 subjects have data at every time increment. 3C shows average performance for 13 subjects who all have data points at pre-implant, 6 months and 12 months post-implantation. 3D demonstrates individual performance during the first 12 months post-implantation for the same subset of 13 subjects shown in 3C.

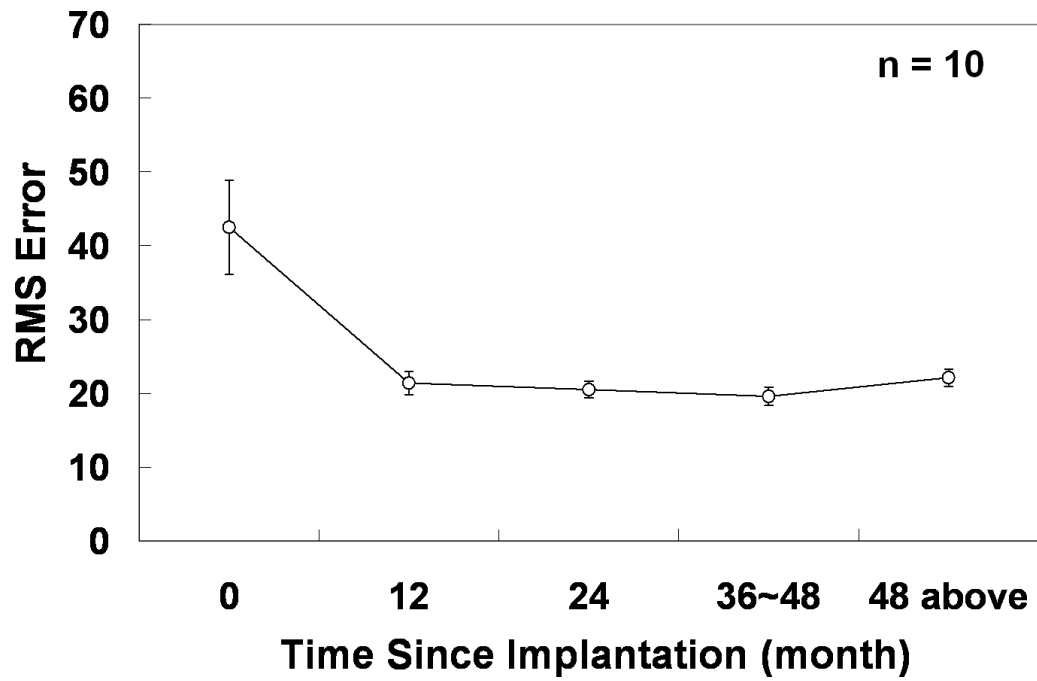


Figure 4. Localization performance overtime for 10 subjects who all have data points in every time period except pre-implantation (6 individuals do not have pre-implant data). Results are expressed as RMS error scores and error bars indicate standard errors.

Table 1

Internal device distribution

Type of Device	# of subjects	% of Subjects
Clarion HiFocus 1.2/I-CII	2	4.2
Clarion HiFocus II-CII	10	20.8
Clarion HiRes 90K	9	18.8
Clarion HiRes 90K with Helix	6	12.5
<hr/>		
Nucleus CI 24M	10	20.8
Nucleus CI 24R	4	8.3
Nucleus CI 24R(CA)	1	2.1
Nucleus CI 24RE(CA)	6	12.5
<hr/>		
Total	48	100