

The Fibroblast Integrin $\alpha 11\beta 1$ Is Induced in a Mechanosensitive Manner Involving Activin A and Regulates Myofibroblast Differentiation^{*[5]}

Received for publication, October 23, 2009, and in revised form, January 20, 2010. Published, JBC Papers in Press, February 2, 2010, DOI 10.1074/jbc.M109.078766

Sergio Carracedo[‡], Ning Lu[‡], Svetlana N. Popova[‡], Roland Jonsson[§], Beate Eckes[¶], and Donald Gullberg^{‡1}

From the [‡]Department of Biomedicine and [§]Broegelmann Research Laboratory-The Gade Institute, University of Bergen, N-5009 Bergen, Norway and the [¶]Department of Dermatology, University of Cologne, D-50937 Cologne, Germany

Fibrotic tissue is characterized by an overabundance of myofibroblasts. Thus, understanding the factors that induce myofibroblast differentiation is paramount to preventing fibrotic healing. Previous studies have shown that mechanical stress derived from the integrin-mediated interaction between extracellular matrix and the cytoskeleton promotes myofibroblast differentiation. Integrin $\alpha 11\beta 1$ is a collagen receptor on fibroblasts. To determine whether $\alpha 11\beta 1$ can act as a mechanosensor to promote the myofibroblast phenotype, mouse embryonic fibroblasts and human corneal fibroblasts were utilized. We found that $\alpha 11$ mRNA and protein levels were up-regulated in mouse embryonic fibroblasts grown in attached three-dimensional collagen gels and conversely down-regulated in cells grown in floating gels. $\alpha 11$ up-regulation could be prevented by manually detaching the collagen gels or by cytochalasin D treatment. Furthermore, SB-431542, an inhibitor of signaling via ALK4, ALK5, and ALK7, prevented the up-regulation of $\alpha 11$ and the concomitant phosphorylation of Smad3 under attached conditions. In attached gels, TGF- $\beta 1$ was secreted in its inactive form but surprisingly not further activated, thus not influencing $\alpha 11$ regulation. However, inhibition of activin A attenuated the up-regulation of $\alpha 11$. To determine the role of $\alpha 11$ in myofibroblast differentiation, human corneal fibroblasts were transfected with small interfering RNA to $\alpha 11$, which decreased α -smooth muscle actin expression and myofibroblast differentiation. Our data suggest that $\alpha 11\beta 1$ is regulated by cell/matrix stress involving activin A and Smad3 and that $\alpha 11\beta 1$ regulates myofibroblast differentiation.

A major function of fibroblasts is to take part in wound closure during wound healing (1). During this process, fibroblasts assume a more activated contractile phenotype and differentiate into myofibroblasts under the influence of mechanical tension (2) and soluble factors, such as TGF- $\beta 1$ (3). Similar activa-

tion of fibroblasts occurs under pathological conditions, such as fibrosis and in the desmoplastic reaction in the tumor stroma (4, 5). In the latter instance, the tumor fibroblasts are called cancer-associated fibroblasts. Molecularly, myofibroblasts and cancer-associated fibroblasts are characterized by the expression of α -smooth muscle actin (α -SMA)² and a splice variant of fibronectin (FN-EDA) (1). In addition to soluble factors, cell adhesion receptors of the integrin family play important roles during myofibroblast differentiation (3, 6). Integrins are heterodimeric cell adhesion receptors composed of non-covalently associated α - and β -chains. Nine of the 24 integrin $\alpha\beta$ heterodimers are characterized by the presence of an inserted and interactive domain in the α -chain, known as the α I-domain, which is present in the four collagen receptors, $\alpha 1\beta 1$, $\alpha 2\beta 1$, $\alpha 10\beta 1$, and $\alpha 11\beta 1$ (7). We have recently determined that the integrin $\alpha 11\beta 1$ is the major collagen receptor on cultured mouse embryonic fibroblasts (MEFs) and that it is uniquely needed during tooth eruption on periodontal ligament fibroblasts *in vivo* (8). In an experimental model for lung cancer, recent data suggest that $\alpha 11\beta 1$ acts in tumor stroma fibroblasts by regulating the autocrine secretion of IGF-II (9).

Integrins have previously been shown to play a role in TGF- β activation. The groundbreaking work in the 1990s demonstrating that the RGD-binding αv integrins play an important role in the activation of TGF- β resulted in a new paradigm for integrins as master effectors of TGF- β activation (10). In this context, the $\alpha v\beta 6$ integrin appears to be central in creating a conformational change in the latency-associated protein complex, leading to activation of TGF- β . The $\alpha v\beta 8$ integrin can activate the complex by inducing the matrix metalloproteinase MMP-14, which in turn cleaves latency-associated protein to activate TGF- β (11). Generation of mice with a mutation of the RGD sequence in latency-associated protein to RGE results in a phenotype reminiscent of TGF- $\beta 1$ -deficient animals (12). More recently, this phenotype has also been mimicked by functionally inactivating $\alpha v\beta 6$ and $\alpha v\beta 8$ (13). Myofibroblasts have been shown to activate TGF- β by contracting the extracellular matrix (ECM) and the latency-associated protein complex as part of a mechanism suggested to restrict myo-

* This work was supported by European Union Marie Curie Early Stage Training Contract MEST-CT-2004-514483 (to S. C.), the Strategic Research Program at Helse Bergen (to R. J.), a bilateral German-Norwegian Deutsche Akademische Austauschdienst, Program des Projektbezogenen Personenaustausch grant from the Research Council of Norway (to D. G.), Helse Vest, Kreftforeningen Grant PR 2007-0103 (to D. G.), and Research Council of Norway Grant 172330 V40 (to D. G.).

[5] The on-line version of this article (available at <http://www.jbc.org>) contains supplemental Tables S1 and S2 and Figs. S1–S4.

¹ To whom correspondence should be addressed: Jonas Lies Vei 91, N-5009 Bergen, Norway. Tel.: 47-555-86332; Fax: 47-555-86410; E-mail: donald.gullberg@biomed.uib.no.

² The abbreviations used are: α -SMA, α -smooth muscle actin; MEF, mouse embryonic fibroblast; TGF, transforming growth factor; HCF, human corneal fibroblast; FGF, fibroblast growth factor; DMEM, Dulbecco's modified Eagle's medium; Pest, penicillin and streptomycin; FBS, fetal bovine serum; PBS, phosphate-buffered saline; qPCR, quantitative PCR; ECM, extracellular matrix; siRNA, small interfering RNA.

fibroblast differentiation to stiffened matrices (3). In these experiments, $\alpha v\beta 5$ has been shown to play a major role, but a role for $\beta 1$ integrins has also been indicated. When bioavailable, TGF- β can initiate different signaling pathways involving the canonical Smad-dependent pathway with Smad phosphorylation and nuclear transport of Smads leading to transcriptional activation of fibrosis-related genes (14). A recent paper by Liu *et al.* (15) convincingly demonstrates the central role of fibroblast $\beta 1$ integrins in fibrosis. Relatively little is known about the role of integrins in cancer-associated fibroblasts in the tumor stroma except for the data suggesting that matrix stiffness might regulate tumor growth (16, 17), in turn indicating that fibroblast-driven reorganization of the tumor stroma might be an important factor regulating tumorigenesis.

Two of the collagen-binding integrins, $\alpha 1\beta 1$ (18) and $\alpha 2\beta 1$ (19), influence myofibroblast differentiation under some conditions *in vitro*, whereas the role of $\alpha 11\beta 1$ in this process is unknown. To better understand $\alpha 11$ expression and function in fibroblasts within a three-dimensional microenvironment, we have used as a model MEFs immortalized with the T large antigen of the SV40 virus (SV40 MEFs) and primary MEFs. Our findings demonstrate that $\alpha 11\beta 1$ is regulated by a mechanical strain-driven mechanism that involves activin A. Upon finding that α -SMA and $\alpha 11$ are similarly regulated, we could furthermore establish that $\alpha 11$ is involved in collagen I-mediated myofibroblast differentiation in human corneal fibroblasts (HCFs), suggesting that $\alpha 11\beta 1$ might be an important effector of collagen reorganization mediated by myofibroblasts.

EXPERIMENTAL PROCEDURES

Antibodies, Reagents, and Growth Factors—Rabbit polyclonal antisera to mouse and human $\alpha 11$ have been described previously (20). The polyclonal rabbit antibody to mouse integrin $\alpha 2$ was used as described (21). Monoclonal antibodies to α -tubulin, α -smooth muscle actin (α -SMA), and β -actin, clones DM1A, 1A4, and AC15 respectively, were purchased from Sigma. Monoclonal antibody to TGF- $\beta 1$, $\beta 2$, and $\beta 3$ (clone 1D11) was acquired from R&D Systems (Oxon, UK). The monoclonal antibody to activin A (clone 69403) was purchased from R&D Systems. Rabbit polyclonal antiserum to phospho-Smad2 (22) was kindly donated by Aris Moustakas (Ludwig Institute for Cancer Research, Uppsala, Sweden). Rabbit polyclonal antiserum to phospho-Smad3 (pSpS423/425) was purchased from Acris (Hiddenhausen, Germany). Both horseradish peroxidase-conjugated secondary antibodies, goat anti-rabbit and goat anti-mouse IgGs, were obtained from Santa Cruz Biotechnology (Heidelberg, Germany). Goat anti-mouse and goat anti-rabbit Cy2- and Cy3-conjugated IgGs (multiple labeling grade) were obtained from Jackson ImmunoResearch Laboratories (Fornebu, Norway). Cytochalasin-D and SB-431542 were both purchased from Sigma. Recombinant mouse follistatin (FS288), recombinant human activin A, and recombinant FGF-2 (FGF-basic 157 amino acids) were bought from R&D Systems. Recombinant human TGF- $\beta 1$ was bought from PeproTech (London, UK).

Cell Culture—To generate SV40 MEFs, primary mouse embryonic fibroblasts were isolated as described previously (8) and infected at +37 °C for 2 h with recombinant retroviruses

containing the SV40 T large antigen (23) as described earlier (24). Cells were cultured in DMEM (Invitrogen) supplemented with 10% fetal calf serum (FBS) (PAA Laboratories, Pasching, Austria) and 1% penicillin and streptomycin (Pest) (Sigma). Corneal fibroblasts from adult human corneas were collected with the approval of the Ethical Committee of the Medical Faculty (Umeå University, Sweden), following informed consent and in accordance with the tenets of the Declaration of Helsinki of 1975. Small pieces of corneal stroma were cut from a corneal button and initially placed in cell culture flasks in 1:1 DMEM/Ham's F-12 medium (Invitrogen) supplemented with 10% FBS and 72 μ g/ml benzylpenicillin. Upon cell growth, culture medium was replaced with standard DMEM, 10% FBS, 1% Pest, and cells were expanded and frozen at -150 °C at passage 3, with a splitting ratio of 1:3. Smad3^{-/-} dermal fibroblasts and control wild type cells were kindly provided by K. Flanders (NCI, National Institutes of Health, Bethesda, MD) and were isolated as described previously (25). Dermal fibroblasts were isolated as described previously (26). Immortalization was achieved by ~10 passages at the permissive temperature for large T expression (33 °C) in DMEM (Sigma) supplemented with 10% FBS and 20 units/ml interferon γ (Sigma) (27).

Collagen Type I Gels—Collagen I gels were mixed as previously described with some modifications (28). Briefly, each ml of collagen I solution contained 500 μ l of 2 \times DMEM with 5 \times 10⁵ cells, 10 μ l of 200 mM glutamine (MedProbe AS, St. Hanshaugen, Norway), antibiotics, 100 μ l of 0.2 M HEPES (Sigma), pH 8.0, and 400 μ l of 3 mg/ml collagen type I (PureCol, bovine skin collagen I, 3.0 mg/ml stock solution, Nutacon BV, Leimuiden, Netherlands). 450 μ l of this mixture were added into each well of a 24-well plate (Nunc, Roskilde, Denmark). Gels attached to the wall and bottom of the wells during polymerization (~90 min). Cells remained within these attached gels and cultured at 37 °C in the presence of 5% CO₂ until collected. For floating conditions, lattices were either formed in wells previously coated overnight with 5% bovine serum albumin (Roche Applied Science) in sterile phosphate-buffered solution (PBS) (Invitrogen) or manually detached with a spatula after gels had polymerized and attached to the wall and bottom of uncoated wells. Once gels had formed, DMEM supplemented with 1% Pest and 10% FBS was applied on top of each gel. Cells were extracted from lattices at each time point by digesting gels with collagenase I (400 units/ml, CLS I, Worthington) at 37 °C for ~15 min. Subsequently, cold PBS containing protease inhibitor (complete mini-EDTA-free, Roche Applied Science) was added, and cells were centrifuged. Upon discarding supernatants, pellets were further lysed in SDS-sample buffer without reducing reagent (Bio-Rad) and subjected to Western blotting.

Western Blotting—Cells cultured in monolayer were washed three times with PBS (Invitrogen) and trypsinized. They were further centrifuged, and after discarding supernatants, the resulting pellets were lysed in SDS-sample buffer without reducing agent (Bio-Rad), sonicated, and subjected to a SDS-PAGE on 6% gels. Separated proteins were transferred (100 V, 90 min) onto nitrocellulose membranes (GE Healthcare). Membranes were blocked for 1 h at room temperature with 5% nonfat dry milk (Marvel, UK) in Tris-buffered solution

Mechanical Strain Control of $\alpha 11$ Integrin

containing 0.05% Tween 20 (TBS-T) (Sigma), incubated with the primary antibodies to $\alpha 11$ or $\alpha 2$ (both diluted 1:500), α -SMA (1:1000), α -tubulin (1:2000), Psmad2 (1:1000), Psmad3 (1:1000), or β -actin (1:5000), in TBS-T, 1% bovine serum albumin overnight at +4 °C. Upon washing in TBS-T three times for 10 min, membranes were further incubated with goat anti-mouse and goat anti-rabbit horseradish peroxidase-conjugated secondary IgGs (both diluted 1:5000, 50 min at room temperature). Membranes were developed using the ECL Western blotting detection kit (GE Healthcare) and photographed using the ChemiDoc XRS device and the Quantity One 1-D analysis software (Bio-Rad). Each result shown by Western blot was repeated in independent assays a minimum of two times. Band intensities were quantified with Image J software (available on the National Institutes of Health Web site).

Immunofluorescence and Bright Field Microscopy—For bright field microscopy, 1.5×10^4 SV40 MEFs were seeded on 12-well plates (Nunc) and treated with Cytochalasin-D (Sigma) for 72 h. For immunofluorescence studies and except for Fig. 8D (where 8×10^3 cells were seeded), 1.5×10^4 cells were grown on 100 μ g/ml collagen I-coated coverslips overnight and fixed the next day with methanol for 5 min at -20 °C. Following rehydration in PBS, cells were further permeabilized with 0.2% Triton X-100 (Sigma) in PBS for 15 min and blocked with 10% goat serum in PBS containing 0.05% Tween 20 (PBS-T) for 45 min at 37 °C. Fixed cells were next incubated with monoclonal mouse anti- α -SMA and polyclonal rabbit antisera to mouse or human $\alpha 11$ (diluted 1:400 and 1:1000, respectively) for 45 min at 37 °C, washed three times for 10 min with PBS-T, and incubated in goat anti-mouse Cy2- and goat anti-rabbit Cy3-conjugated secondary IgGs (diluted 1:50 and 1:500, respectively) for 45 min at 37 °C. Cells were visualized under a Zeiss Axioscope fluorescence microscope (Oslo, Norway), and pictures were acquired with a digital AxioCam MRm camera. Corneal fibroblasts were processed in the same way except that, when needed, they were treated with 5 ng/ml TGF- β or 2 nM activin A along with $\alpha 11$ -specific siRNA or non-targeting mock siRNA at 100 nM for 3 days prior to fixation (see siRNA transfection procedure below).

Enzyme-linked Immunosorbent Assay—The enzyme-linked immunosorbent assay kit Quantikine[®] (R&D Systems) was used according to the manufacturer's instructions to detect relative concentrations of mouse TGF- $\beta 1$ present in conditioned media from SV40 MEF-populated attached collagen gels at either 24 or 96 h after casting the gels. Bars in the graph (see Fig. 5B) show the average value of three independent experiments, whereas the error bars represent the S.D. for the corresponding average value.

TGF- β Activity (Luciferase Assay)— 2×10^5 SV40-immortalized MEFs were seeded on each well of a 12-well plate and cultured overnight in DMEM, 10% FBS, 1% Pest at 37 °C, 5% CO₂. The next day, cells were co-transfected with 1 μ g of a plasmid containing the TGF- β -responsive element linked to the luciferase reporter gene p(GACA)₁₂-lux (29), and 10 ng of pCG- β -gal was used as an internal control (provided by C. Svensson (Uppsala, Sweden)), using FuGene transfection reagent (Roche R&D, Oslo Pharma) for 3 h according to the manufacturer's instructions. The medium containing plasmids and

transfection reagent was then removed and replaced by fresh DMEM, 10% FBS, 1% Pest, and either the corresponding amounts of recombinant TGF- $\beta 1$ or conditioned medium from SV40 immortalized MEFs seeded in attached gels were added. After 24 h, luciferase and β -gal activities of duplicate samples for each condition were measured in two independent experiments as reported previously (30). Transfected cells that survived in selection medium (29) for 14 days were considered as stably transfected, further grown under selection medium, and seeded within collagen gels (supplemental Fig. S1). Cells were extracted from collagen gels in the same manner as the untransfected cells until the step where cell pellets were obtained (see "Collagen Type I Gels"). From this step, cells were processed as cells cultured in monolayer and subjected to the luciferase assay (30).

siRNA Transfection—Upon thawing and overnight culture of low passage primary human corneal fibroblasts, cells were seeded on a 12-well plate (1.0×10^5 cells/well) and left in culture until the next day. 6 μ l of Hi Perfect transfection reagent (Qiagen, Oslo, Norway) together with 100 nM ON-TARGET plus siRNA to human $\alpha 11$ (J-008000-10; target sequence, GGACUCAGACGGUAGCAUU; Dharmacon (Northumberland, UK)) or 100 nM non-targeting mock siRNA (D-001810-02-05; Dharmacon) were mixed and incubated with plain DMEM for ~ 20 min at room temperature before adding the siRNA mixtures and 5 ng/ml TGF- $\beta 1$ into the corresponding wells with cultured cells and incubating for 3 days. Corneal fibroblasts were then collected for Western blotting or for immunofluorescence analysis as described above.

Quantitative PCR (qPCR)—Total RNA was isolated from $\alpha 11^{+/+}$ SV40-immortalized MEFs using the RNeasy minikit (Qiagen) according to the manufacturer's instructions. cDNA was generated from 1 μ g of total RNA using murine leukemia virus reverse transcriptase (Fermentas, Helsingborg, Sweden) and oligo(dT)₁₈ primer (Thermo Scientific, Oslo, Norway). For each sample, 100 ng of amplified cDNA were used in triplicates as template in the PCRs using iQ SYBR Green Supermix reagent according to the manufacturer's instructions (Bio-Rad). The qPCRs were performed in a LightCycler[®] 480 Instrument II (Roche Applied Science). The mRNA expression for each gene was measured using the LightCycler[®] 480 software version 1.5 (Roche Applied Science). The -fold change in mRNA expression for each gene was calculated using the $2^{-\Delta\Delta Ct}$ method (31). mRNA quantifications of each target gene under each condition were normalized to glyceraldehyde-3-phosphate dehydrogenase. Quantifications of mRNA levels for each target gene in control cells seeded in monolayer were used for calibration/reference. The primers and annealing temperatures used are listed in supplemental Table S1.

RESULTS

$\alpha 11$ Integrin Levels in Mouse Embryonic Fibroblasts Cultured in Floating Versus Attached Collagen Lattices—We have previously shown that $\alpha 11\beta 1$ is the major collagen receptor on MEFs cultured *in vitro* (8). Because fibroblasts are present in a three-dimensional collagen-rich environment *in vivo*, and culture within a three-dimensional matrix has been shown to influence the levels of another major collagen receptor, $\alpha 2\beta 1$ (32), we

wanted to determine whether $\alpha 11$ expression and function was affected by culturing MEFs inside attached or floating collagen gels. A remarkable difference between these two conditions is the freedom of cells to contract the diameter of floating but not attached gels. Both conditions (described under “Experimental Procedures”) were used to address whether matrix stiffness has an influence on the expression of the $\alpha 11$ integrin subunit in SV40 MEFs.

In attached gels, these cells up-regulated $\alpha 11$ RNA and protein levels in a time-dependent manner (Fig. 1, A and B, respectively). The lack of specific reactivity of preimmune serum is shown in supplemental Fig. S2. Whereas RNA levels increased in attached gels to peak at 72 h (Fig. 1A), protein levels at 24 h dropped when compared with levels in monolayers, to later increase at 72 and 96 h. In contrast, within floating lattices, SV40 MEFs down-regulated $\alpha 11$ transcript and protein levels already at 8 h (Fig. 1, A and C, respectively). Later time points were not considered in floating gels because $\alpha 11$ RNA levels did not decrease beyond 48 h (data not shown). These data suggest that the mechanical properties of collagen lattices regulate the expression of $\alpha 11$.

An Attached Collagen Lattice and an Intact Actin Cytoskeleton Are Both Necessary for Increased Expression of $\alpha 11$ —Because cells develop mechanical stress with time when cultured within attached gels (33), we hypothesized that mechanical tension could be involved in regulating the expression of $\alpha 11$. Consistent with our theory, the up-regulation of $\alpha 11$ could be prevented in a dose-dependent manner when cytochalasin D, an actin cytoskeleton-disrupting drug, was added for up to 72 h (Fig. 2A). Despite a change in morphology, cells treated with cytochalasin D on two-dimensional substrates did not detach from the plates or show any signs of toxic effects (Fig. 2B). In addition, $\alpha 11$ protein levels were measured in cells cultured in collagen gels that either remained attached at all times or were manually detached (thus becoming floating) 24 or 48 h before collecting cells for protein levels analyses. In these three different situations, SV40 MEFs remained for a total of 72 h within collagen lattices, but only cells cultured in gels that remained attached at all times were able to express relatively high levels of $\alpha 11$ (Fig. 2C). These data suggest that both an intact actin cytoskeleton and a continuously attached collagen lattice are needed for high expression of $\alpha 11$ in three-dimensional collagen gels.

The Up-regulation of $\alpha 11$ in Mouse Embryonic Fibroblasts Cultured in Attached Collagen Gels Involves the TGF- β /Activin/Nodal Signaling Pathway—Given that a number of cell types transcriptionally up-regulate members of the TGF- β superfamily under attached conditions (34, 35) and that TGF- β has previously been reported to regulate other integrins, such as $\alpha 2\beta 1$ (36), we hypothesized that TGF- $\beta 1$ could be involved in the regulation of $\alpha 11$ in cells cultured in stressed gels. qPCR showed increased mRNA levels of TGF- $\beta 1$ in cells cultured in attached lattices compared with cells in floating lattices, whereas βA activin levels were lower inside floating and attached gels compared with cells cultured on a monolayer (Fig. 3A). The mRNA levels of the corresponding activin-like receptors, ALK5 and ALK4, increased quickly in attached gels, whereas in floating gels, there was a delay in their increased

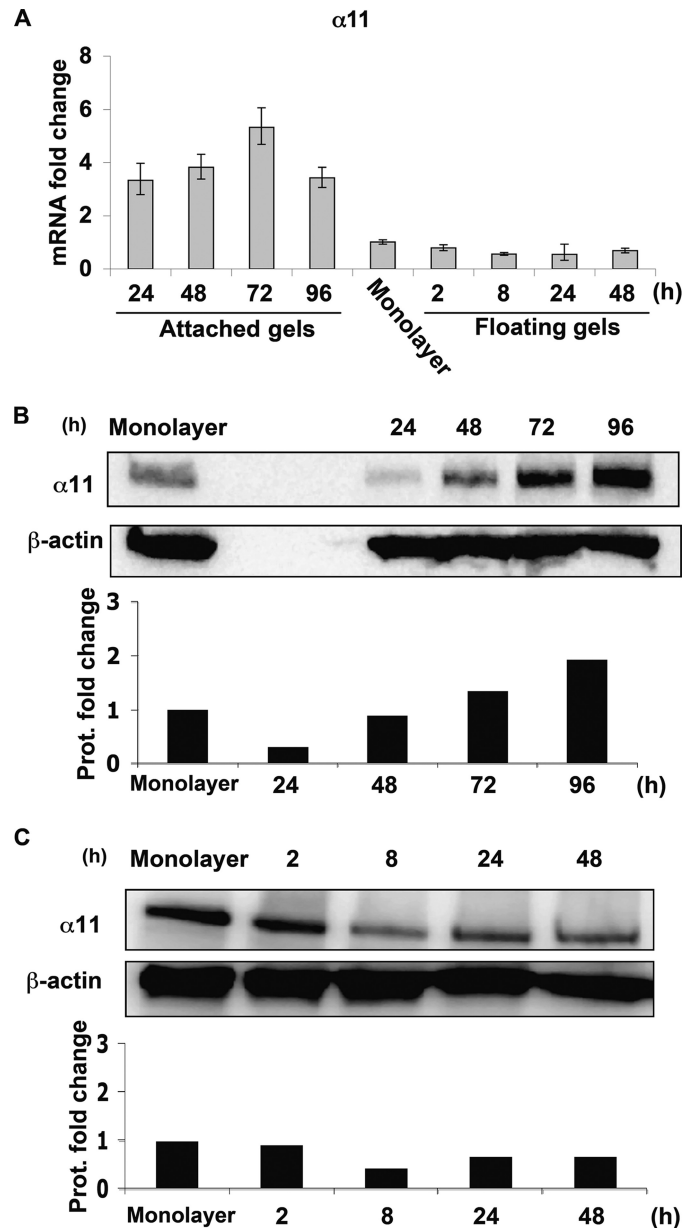


FIGURE 1. $\alpha 11$ levels are dynamically regulated inside collagen lattices. A, quantifications of $\alpha 11$ mRNA levels in wild type SV40 MEFs seeded in attached and floating collagen gels at different time points. mRNA quantifications under each condition were normalized to glyceraldehyde-3-phosphate dehydrogenase. Quantifications of mRNA levels in control cells (seeded in monolayer) were used for calibration/reference. The error bars represent asymmetric S.D. values for the respective conditions and were calculated as previously described (31). The specific values for each error bar are provided in supplemental Table S2. B, $\alpha 11$ protein levels in SV40 MEFs seeded in attached collagen gels at different time points. C, $\alpha 11$ protein levels in SV40 MEFs seeded in floating collagen gels at different time points. Band intensities in B and C were quantified, normalized to β -actin, and calibrated to the normalized value for cells in monolayer.

expression (Fig. 3B). In addition, attached lattices populated by SV40 MEFs were treated with SB-431542, an inhibitor for signaling triggered by ALK4, ALK5, and ALK7 (37), which bind activin A, TGF- $\beta 1$, and nodal, respectively (35). The addition of SB-431542 attenuated the up-regulation of $\alpha 11$ in SV40 MEFs cultured within attached gels (Fig. 3C), thus suggesting the involvement of at least one of the activin-like receptors in $\alpha 11$ up-regulation. Moreover, treatment with SB-431542 for 48 h

Mechanical Strain Control of $\alpha 11$ Integrin

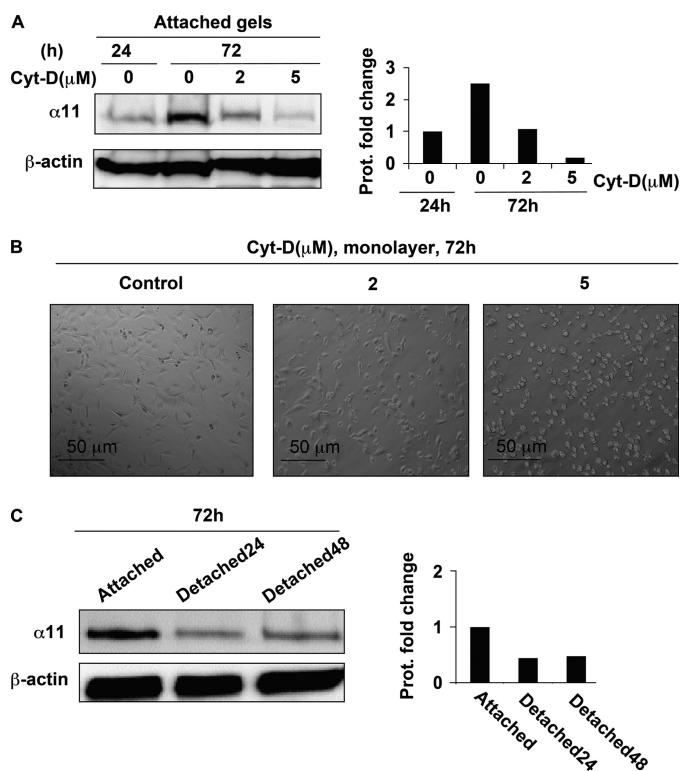


FIGURE 2. $\alpha 11$ levels inside attached collagen lattices depend on an intact actin cytoskeleton. A, effect of cytochalasin D at different concentrations on $\alpha 11$ protein levels in SV40 MEFs seeded in attached collagen lattices at 24 and 72 h. B, SV40 MEFs seeded in monolayer and treated with different concentrations of cytochalasin D (Cyt-D) for 72 h. C, $\alpha 11$ protein levels at 72 h in SV40 MEFs seeded in collagen lattices that were attached at all times (*attached*) or manually detached at 24 or 48 h in order to obtain floating conditions (*Detached24* and *Detached48*, respectively). Band intensities in Western blots were quantified, normalized to β -actin, and calibrated to the normalized value corresponding to untreated cells at 24 h (A) or cells populating permanently attached gels (C).

also down-regulated the expression of $\alpha 11$ in SV40-MEFs seeded on planar two-dimensional substrates and in the absence of serum (Fig. 4A). Given (a) the inhibition produced by SB-431542 (Fig. 3C), (b) that we failed to detect any regulation of $\alpha 11$ upon treating cells in monolayer with nodal for different time periods, and (c) that we could barely detect mRNA levels for this ligand in SV40 MEFs within attached lattices (data not shown), we focused our interest on TGF- $\beta 1$ and activin A as the potential ligands responsible for the up-regulation of $\alpha 11$ in attached collagen gels. The exogenous addition of either of these factors up-regulated the expression of $\alpha 11$ in SV40 MEFs seeded in monolayer, although with different kinetics (Fig. 4B), suggesting that ALK4 and ALK5 are functional and can mediate signaling affecting $\alpha 11$ levels in the presence of their corresponding bioactive ligands. Furthermore, phosphorylation of Smad2 and Smad3 was induced 30 min after the addition of TGF- $\beta 1$ or activin A. However, TGF- $\beta 1$ produced a more prominent phosphorylation of both Smads than activin A in these cells (Fig. 4C). Thus, considering these results and those obtained through qPCR (Fig. 3, A and B), TGF- $\beta 1$ was at this point our main candidate potentially responsible for the up-regulation of the $\alpha 11$ integrin subunit in cells within attached collagen gels via Smad signaling. Because SB-431542 attenuated $\alpha 11$ expression in cells on a two-dimensional colla-

gen substrate under serum-free conditions (Fig. 4A), it appears that the expression of $\alpha 11$ depends on an autocrine loop involving the TGF- β superfamily.

TGF- $\beta 1$ Is Not Involved in the Up-regulation of $\alpha 11$ in Mouse Embryonic Fibroblasts within Attached Lattices—Although TGF- $\beta 1$ is detected extracellularly in its inactive form, this cytokine needs to be activated in order to be able to bind its receptor, ALK5, and trigger downstream events. Such activation can occur in several ways (6). Once we confirmed by ELISA that, consistent with the RNA data (Fig. 3A), SV40 MEFs secreted TGF- $\beta 1$ in the range of 1–3 ng/ml when cultured in attached collagen gels (Fig. 5A), we proceeded to verify the activation of TGF- $\beta 1$ by these cells. Supernatants from cells cultured in attached gels for 24 or 96 h were added to SV40 MEFs in monolayer that had been transiently transfected with a vector containing a TGF- β -responsive element linked to the firefly luciferase reporter gene (29). Given that (a) $\alpha 11$ was induced when we added recombinant active TGF- β to SV40 MEFs in monolayer (Fig. 4B) and that (b) these cells secrete relatively high amounts of TGF- $\beta 1$ when grown in attached gels (Fig. 5A), we were expecting to detect luciferase activity when SV40 MEFs transfected with the TGF- β -responsive element were exposed to conditioned media from attached gels. Detecting luciferase activity in this scenario would have indicated that the TGF- $\beta 1$ secreted by SV40 MEFs within attached gels had been activated and therefore could potentially be responsible for the up-regulation of $\alpha 11$ in attached gels. Surprisingly, no luciferase activity was detected in this case (Fig. 5B), which suggests that the amount of TGF- $\beta 1$ secreted by these cells was not further activated. We added active recombinant TGF- $\beta 1$ to the same transfected cells as a positive control for the luciferase assay (Fig. 5B). In order to exclude local activation of TGF- β that may have never reached the supernatants used to measure luciferase activity, the reporter plasmid was stably transfected into cells that were further seeded within collagen lattices, but no activity was observed in this instance either (supplemental Fig. S1). Importantly, exogenously added activin A did not activate the reporter plasmid (supplemental Fig. S1). In addition, a pan-TGF- β function-blocking antibody failed to block the up-regulation of $\alpha 11$ when added to cells in attached gels (Fig. 5C), whereas it efficiently blocked the up-regulation of $\alpha 11$ induced by recombinant active TGF- $\beta 1$ that had been exogenously added (supplemental Fig. S3). These data suggest that the TGF- $\beta 1$ secreted by SV40 MEFs within the attached gels is not further activated and, therefore, is not involved in the up-regulation of $\alpha 11$ in these cells and under these conditions.

Activin A Is Involved in the Up-regulation of $\alpha 11$ in Mouse Embryonic Fibroblasts within Attached Lattices—Given that (a) SB-431542 inhibited the up-regulation of $\alpha 11$ in the attached gels (Fig. 3C), (b) exogenously added recombinant activin A induced $\alpha 11$ in monolayer (Fig. 4B), and (c) TGF- β was not involved in the regulation of $\alpha 11$ in SV40 MEFs (Fig. 5, B and C, and supplemental Fig. S1), we proceeded to address whether activin A was taking part in up-regulating $\alpha 11$ levels in collagen gels in these cells. In attached gels, cells were treated with follistatin, a molecule that binds activin A and neutralizes its bioactivity (38), or with a function-blocking antibody to activin A. In both instances, the up-regulation of $\alpha 11$ was attenuated in

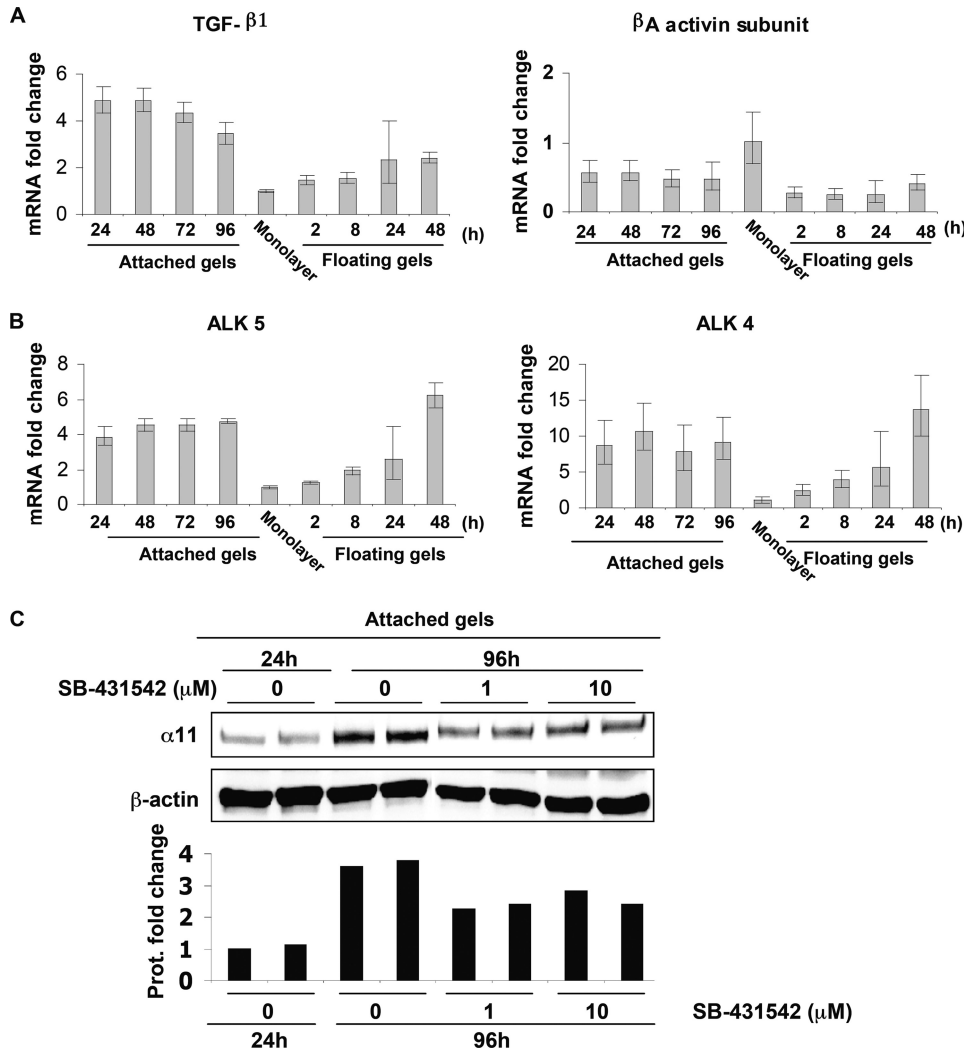


FIGURE 3. Involvement of the TGF- β superfamily in the regulation of $\alpha 11$ in attached collagen gels. *A* and *B*, quantifications of the mRNA levels for TGF- β superfamily ligands TGF- β 1 and β A activin (*A*) and their respective receptors, ALK5 and ALK4 (*B*), at different time points in SV40 MEFs seeded in attached or floating collagen gels. mRNA quantifications for each target gene under each condition were normalized to glyceraldehyde-3-phosphate dehydrogenase. Quantifications of mRNA levels for each target gene in control cells (seeded in monolayer) were used for calibration/reference. The error bars represent asymmetric S.D. values for the respective conditions and were calculated as described previously (31). The specific value for each error bar is provided in supplemental Fig. S2. *C*, effect of the indicated concentrations of SB-431542 on $\alpha 11$ protein levels in SV40 MEFs seeded in attached gels at 96 h. Band intensities were quantified, normalized to β -actin, and calibrated to the normalized value corresponding to untreated cells at 24 h.

SV40 MEFs (Fig. 6A). Moreover, Smad3 phosphorylation was also partially inhibited in these cells following follistatin or anti-activin A treatment (Fig. 6B). To ascertain that the identified mechanism was not restricted to SV40 immortalized MEFs, we confirmed that $\alpha 11$ up-regulation in an attached three-dimensional gel also involved activin A in primary MEFs (Fig. 6C). Consistent with a role for Smad3 in mediating the up-regulation of $\alpha 11$, Smad3^{-/-} dermal fibroblasts seeded in attached collagen gels for 72 h showed decreased $\alpha 11$ protein levels compared with wild type dermal fibroblasts (Fig. 6D). Because we failed to detect phospho-Smad2 levels under these conditions (data not shown), and the levels of phospho-Smad2 were clearly detectable only when cells were treated with recombinant TGF- β 1 (Fig. 4C), it appears that, in the attached gels, the regulation of $\alpha 11$ in SV40 MEFs involves activin A and Smad3 as the principal receptor-associated Smad mediating this event.

$\alpha 11$ Is Part of the Myofibroblast Phenotype of Mouse Fibroblasts—In addition to up-regulating $\alpha 11$, both activin A (39, 40) and mechanical tension (41) have been shown to be involved in the up-regulation of α -smooth muscle actin (α -SMA). This isoform of actin is a classical marker for myofibroblasts, a cell type playing a key role in wound healing (1) and pathological conditions, such as fibrosis (1) and cancer (42). Moreover, both α -SMA (43) and $\alpha 11$ (44) are also down-regulated by FGF-2 in some cell types. α -SMA and $\alpha 11$ were also concomitantly regulated by mechanical tension and FGF-2 in SV40 MEFs within attached gels, whereas $\alpha 2$ levels were increased by FGF-2 treatment (Fig. 7A). Thus, since $\alpha 11$ and α -SMA appeared similarly regulated, we hypothesized that $\alpha 11$ could be increased in myofibroblasts. Double immunofluorescence microscopy performed on primary and SV40 MEFs seeded on collagen I-coated surfaces allowed visualization of cells expressing α -SMA stress fibers terminating at $\alpha 11$ -expressing focal adhesions (Fig. 7B). These data demonstrate that $\alpha 11$ is expressed and is functional in myofibroblasts. In addition, immunofluorescent labeling of primary MEFs and immortalized dermal fibroblasts (see “Experimental Procedures”) seeded in monolayer demonstrates that $\alpha 11$ is not only expressed in myofibroblasts derived from SV40 MEFs (Fig. 7B).

$\alpha 11$ Is Necessary for Myofibroblast Differentiation in Corneal Fibroblasts—Following the observation that the up-regulation of $\alpha 11$ in MEFs was linked to the myofibroblast phenotype, we wondered whether $\alpha 11$ could affect the differentiation process itself. Because SV40 MEFs, primary MEFs, and dermal fibroblasts all already appeared to express significant amounts of α -SMA in culture at early time points (Fig. 7), we initially tried to reduce these levels. Serum starvation failed to down-regulate α -SMA, and cultures of cells in floating collagen lattices combined with FGF-2 treatment (44, 45) appeared to disturb $\alpha 11$ regulation (data not shown).

Thus, we instead used primary HCFs, which express relatively modest levels of α -SMA and $\alpha 11$ at early passages (46). Because we were unable to reproducibly retrieve viable HCFs from the three-dimensional collagen lattice at the times needed to appreciate myofibroblast differentiation, we seeded these cells on a two-dimensional collagen I-coated surface. Upon

Mechanical Strain Control of $\alpha 11$ Integrin

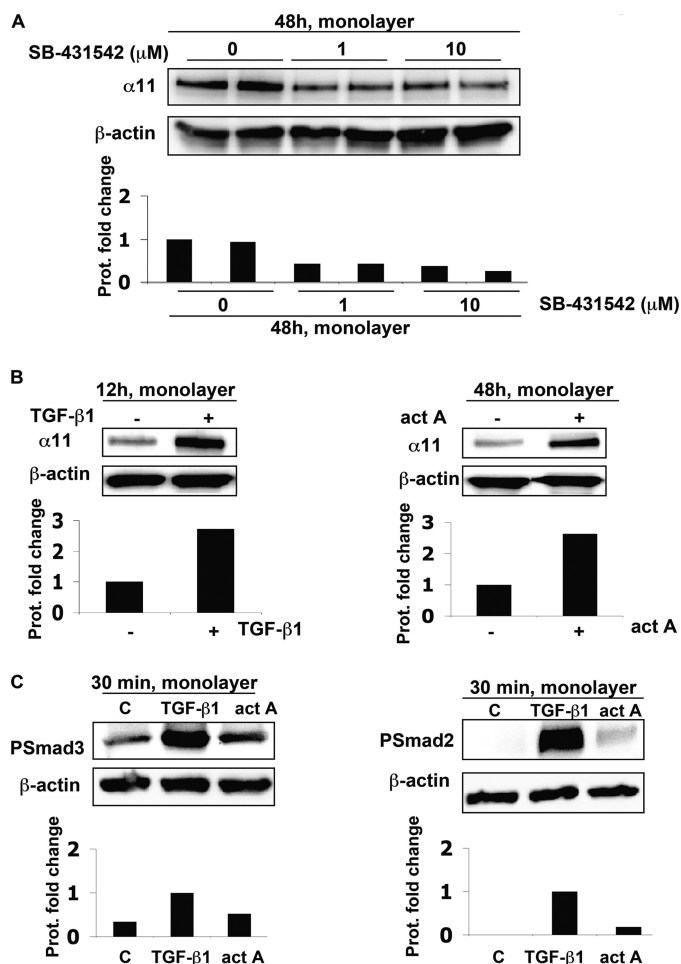


FIGURE 4. $\alpha 11$ levels in SV40 MEFs in monolayer are regulated by SB-431542, TGF- $\beta 1$, and activin A. *A*, effect of the indicated concentrations of SB-431542 on $\alpha 11$ protein levels in SV40 MEFs seeded in monolayer at 48 h under serum free conditions. *B*, $\alpha 11$ protein levels in SV40 MEFs seeded in monolayer were serum-starved when stimulated (+) for the indicated time with 5 ng/ml of TGF- $\beta 1$ or activin A (*act A*; 2 nM). *C*, phospho-Smad2 (*PSmad2*) and phospho-Smad3 (*PSmad3*) protein levels in SV40 MEFs seeded in monolayer and stimulated (+) for 30 min with 5 ng/ml TGF- $\beta 1$ or activin A (*act A*; 2 nM). In *A* and *B* band intensities were quantified, normalized to β -actin, and calibrated to the normalized value for untreated cells. In *C*, the calibration was relative to the normalized band intensities corresponding to cells treated with TGF- $\beta 1$.

treating HCFs cells with either activin A or active TGF- β for 3 days, α -SMA and hence the differentiation of fibroblasts into myofibroblasts could be induced. Here α -SMA and $\alpha 11$ were also concomitantly up-regulated, as previously observed for $\alpha 11$ in SV40 MEFs cultured inside an attached three-dimensional collagen matrix. However, stimulation with TGF- $\beta 1$ led to a much more prominent up-regulation of α -SMA and $\alpha 11$ in corneal fibroblasts cultured on collagen I than that caused by activin A treatment at the concentrations used (Fig. 8A). In fact, Western blot membranes containing samples corresponding to cells stimulated with activin A had to be exposed for much longer to appreciate $\alpha 11$ up-regulation in these cells (supplemental Fig. S4). For this reason, only TGF- β was used in further experiments. TGF- $\beta 1$ -stimulated α -SMA induction was reduced when siRNA to $\alpha 11$ was included at the beginning of the experiment (Fig. 8, C and D, and supplemental Fig. S5).

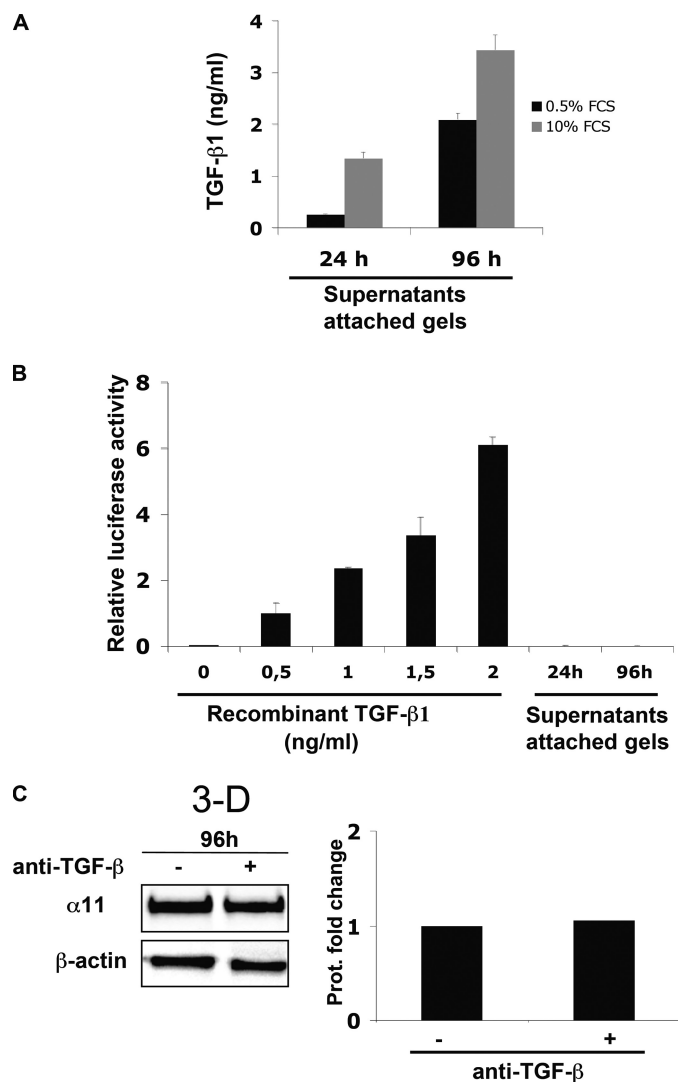


FIGURE 5. TGF- $\beta 1$ is secreted but not activated by SV40 MEFs inside a collagen gel. *A*, amount of TGF- β in supernatants from attached collagen lattices containing SV40 MEFs determined by ELISA at the indicated time points. The analysis was performed in the presence of two different concentrations of serum. The bars show the average value for three independent experiments, whereas the error bars represent the S.D. for the corresponding average value. *B*, luciferase activity normalized to β -galactosidase activity in transiently transfected SV40 MEFs (see "Experimental Procedures") cultured with supernatants similar to those used in *A*. Recombinant active TGF- $\beta 1$ exogenously added was used as a control. Luciferase activities were calibrated to the normalized value for cells stimulated with 0.5 ng/ml recombinant active TGF- $\beta 1$ exogenously added. *C*, $\alpha 11$ protein levels in SV40 MEFs seeded in attached collagen gels in the presence or absence of a 10 μ g/ml concentration of a function-blocking antibody to TGF- β . Band intensities were quantified, normalized to β -actin, and calibrated to the normalized value corresponding to the sample obtained from cells without anti-TGF- β added.

These data suggest that $\alpha 11\beta 1$ is necessary for TGF- β -induced myofibroblast differentiation on a collagen I substrate.

DISCUSSION

$\alpha 11\beta 1$ Levels Are Regulated by Mechanical Strain—In recent years, the field of ECM biology has attracted increased interest with the realization that the ECM plays a central role in maintaining the homeostasis of the cellular microenvironment (47, 48). In addition to its traditional role as a structural framework, it has become clear that the ECM regulates a number of

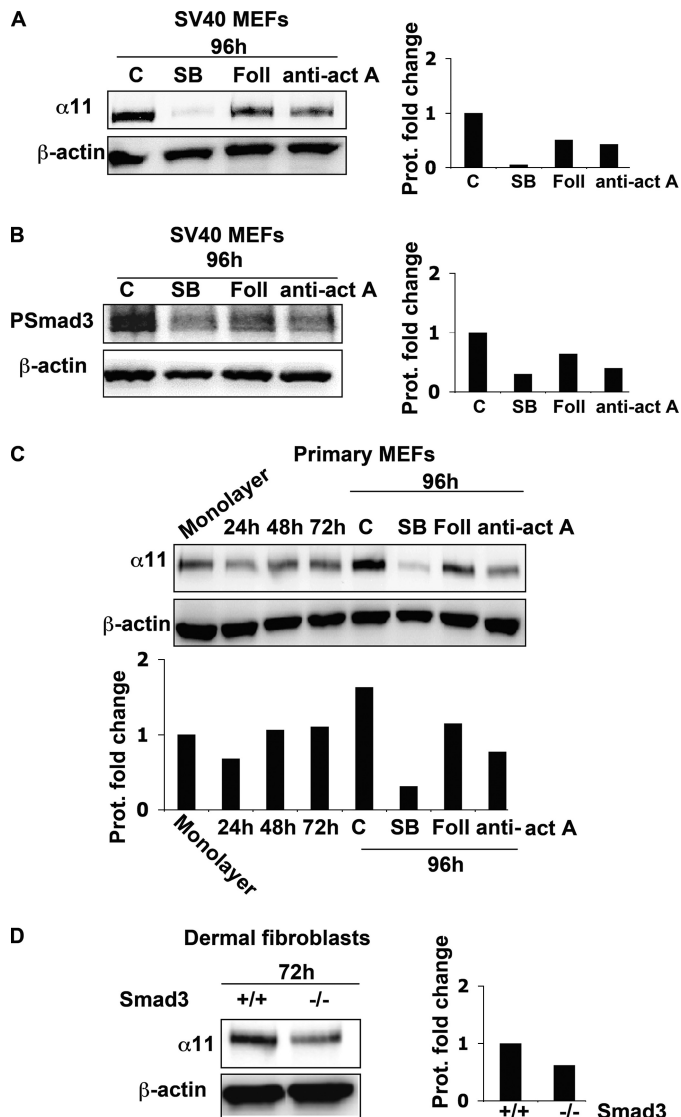


FIGURE 6. Activin A regulates $\alpha 11$ and Smad3 levels in MEFs cultured in attached collagen gels. *A*, $\alpha 11$ levels in SV40 MEFs seeded in attached collagen gels in the presence or absence of SB-431542 (SB; 10 μ M), follistatin (Foll; 5 nM), or activin A function blocking antibody (anti-act A; 25 μ g/ml). *B*, phospho-Smad3 (PSmad3) levels in SV40 MEFs seeded in attached collagen gels in the presence or absence of SB-431542 (10 μ M), follistatin (5 nM), or activin A function-blocking antibody (25 μ g/ml). *C*, $\alpha 11$ levels in primary MEFs seeded in attached collagen gels in the presence or absence of SB-431542 (10 μ M), follistatin (5 nM), or activin A function-blocking antibody (25 μ g/ml). *D*, $\alpha 11$ protein levels in wild type or Smad3^{-/-} dermal fibroblasts seeded in attached collagen lattices at the indicated time point. Band intensities were quantified and normalized to β -actin. Normalized bands were calibrated to the value corresponding to untreated cells (*A* and *B*), cells in monolayer (*C*), or Smad3^{+/+} cells (*D*).

dynamic events involving cell adhesion, cell migration, paracrine signaling, and tissue remodeling. Cell surface receptors, including members of the integrin family and matrix proteases, are central in mediating these effects.

Fibroblasts are connective tissue cells that play a central role in pathological events, such as fibrosis and tumorigenesis (49). In addition to the well known communication between tumor and stroma cells (42), a recent study suggests that fibroblasts and fibroblast integrins are involved in generating the migration pathways for metastasizing tumor cells (50).

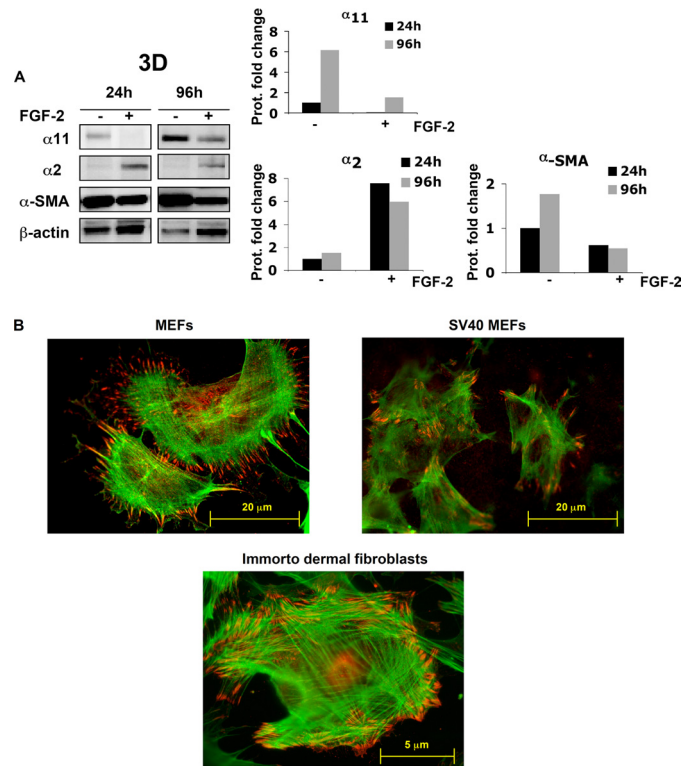


FIGURE 7. $\alpha 11$ levels and regulation correlate with a myofibroblastic phenotype. *A*, $\alpha 11$, $\alpha 2$, and α -SMA protein levels in SV40 MEFs in attached gels in the presence (+) or absence (-) of 20 ng/ml FGF-2 at the indicated time points. Band intensities were quantified, normalized to β -actin, and calibrated to the normalized value corresponding to untreated cells at 24 h. *B*, immunolocalization of $\alpha 11$ (red) at focal adhesions and α -SMA (green) in stress fibers (red) in primary MEFs, SV40 MEFs, and dermal fibroblasts isolated from an immortalized mouse (see "Experimental Procedures").

We have previously shown that $\alpha 11\beta 1$ is the major collagen receptor on mouse embryonic fibroblasts (8). In the current study, we have used mainly SV40 MEFs as a model to examine basic mechanisms of $\alpha 11\beta 1$ regulation in a three-dimensional matrix. Although both $\alpha 2\beta 1$ and $\alpha 11\beta 1$ have been shown to mediate matrix reorganization in a three-dimensional collagen matrix (20, 32), careful analysis of the levels of $\alpha 2\beta 1$ and $\alpha 11\beta 1$ reveals that during matrix reorganization, the levels of these integrins are dynamically regulated. Other data demonstrate that some integrin functions involve a certain amount of crosstalk and that a hierarchical control exists within the integrin family (51–53). Recently, $\alpha 2\beta 1$ was shown to negatively regulate $\alpha 1\beta 1$ integrin when present on the same cells (53). These factors need to be taken into account when studying conditions that regulate $\alpha 11$ levels. Although the three-dimensional environment of certain fibroblasts is enough to up-regulate $\alpha 2\beta 1$ levels (32, 54), that of $\alpha 11\beta 1$ seems to further require the gel being mechanically strained.

The stiffness of the ECM has been shown to influence fibroblast adhesion and migration (55). Accumulating data have shown that mechanical strain is an important factor stimulating myofibroblast differentiation (2, 56–58). The influence of matrix stiffness on cell behavior is thus important to consider when analyzing fibroblasts inside a floating or attached three-dimensional collagen lattice (59).

Previous studies have indicated that cells within an attached collagen gel up-regulate transcription of a number of genes,

Mechanical Strain Control of $\alpha 11$ Integrin

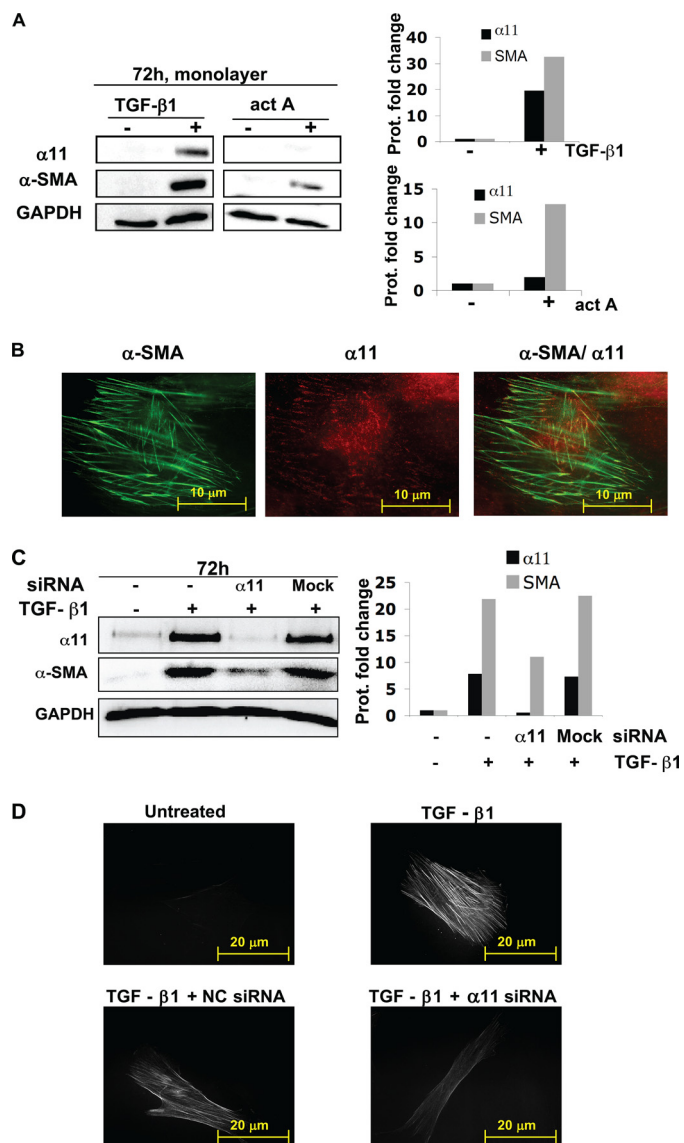


FIGURE 8. $\alpha 11$ influences myofibroblast differentiation in human corneal fibroblasts. *A*, $\alpha 11$ and α -SMA protein levels in corneal fibroblasts that remained unstimulated (–) or were treated (+) with 5 ng/ml of TGF- $\beta 1$ or 2 nM activin A (*act A*) for 3 days. *B*, Immunolocalization of $\alpha 11$ (red) at focal adhesions and α -SMA (green) at stress fibers in corneal fibroblasts treated with 5 ng/ml TGF- $\beta 1$ for 3 days. *C*, $\alpha 11$ and α -SMA protein levels in corneal fibroblasts that remained unstimulated (–) or were treated (+) for 3 days with 5 ng/ml TGF- $\beta 1$ and siRNA (100 nM) to $\alpha 11$ or an off-target siRNA (*mock*) as a control. *D*, immunolocalization of α -SMA in corneal fibroblasts that remained untreated (*upper left*), were stimulated with 5 ng/ml TGF- $\beta 1$ only (*upper right*), or were treated with 5 ng/ml TGF- $\beta 1$ and siRNA (100 nM) to $\alpha 11$ (*lower right*) or an off-target siRNA (negative control (NC); *lower left*). The exposure time when acquiring pictures was identical in all conditions. In *A* and *C*, band intensities were quantified, normalized to β -actin, and calibrated to the normalized value corresponding to untreated cells. GAPDH, glyceraldehyde-3-phosphate dehydrogenase.

including those encoding collagen I, periostin, collagen XII, and tenascin-C (60–64). Our data suggest that the $\alpha 11$ integrin subunit should be added to this group of mechanoregulated genes.

Role of TGF- β Family Members in $\alpha 11$ Expression—In the case of both collagen $\alpha 1(I)$ (63) and periostin (64), an autocrine loop involving TGF- $\beta 1$ has been implied in the mechanosensitive up-regulation of protein synthesis. Regarding tenascin-C,

the mechanical strain-induced synthesis occurs in a manner dependent on integrin $\beta 1$ and ILK (65). The fact that SB-431542 almost completely blocked $\alpha 11$ up-regulation indicates that TGF- β family signaling is a major mechanism to regulate $\alpha 11$ levels within a three-dimensional collagen gel. Recent analysis of the human ITGA11 proximal promoter has revealed a functional Smad3-binding site, which, together with a Smad2-dependent Sp1 site, seems to mediate responsiveness of ITGA11 to TGF- $\beta 1$ (66). However, in the present study, the amount of TGF- $\beta 1$ secreted by SV40 MEFs in attached lattices appeared not to be activated and therefore not to be responsible for the up-regulation of $\alpha 11$ in these cells. It will be interesting to determine if activin A also can mediate its effects on $\alpha 11$ levels via these or other sites in the promoter. Binding of SRF to CARG-boxes in genes responding to mechanical strain has previously been demonstrated in fibroblasts (67, 68). The fact that an intact cytoskeleton is needed for the $\alpha 11$ up-regulation might indicate that such a mechanical stress-sensitive element also is present in the ITGA11 promoter. No obvious conserved canonical CARG-box is present in the 3-kb part of the promoter (30), so the involvement of CARG-boxes in the regulation of $\alpha 11$ is currently unclear.

Activin A Stimulates $\alpha 11$ Synthesis—The reason for the lack of activation of TGF- $\beta 1$ secreted by SV40 MEFs might be related to deregulated signaling caused by the immortalization process (69) or the origin/species differences of the fibroblasts. We are confident that the lack of effect of antibodies to TGF- β in the collagen gel is not a general diffusion/accessibility problem because antibodies to activin A have an effect on cells in the collagen gel. Finally, although we have gone relatively far to prove that TGF- $\beta 1$ is not activated in stressed gels in this case, the possibility that activation of TGF- $\beta 1$ cannot be detected by the methods used here should not be discarded.

In the present study, the lack of detectable TGF- $\beta 1$ activation instead allowed us to identify activin A as an autocrine factor up-regulating $\alpha 11$ and in turn stimulating myofibroblast differentiation. Interestingly, βA activin mRNA levels were highest in monolayers (the condition where mechanical tension is highest) and lower in attached gels and barely detectable in floating gels. The results suggest that activin A in these cells may be regulated by mechanical strain. Interestingly, mechanical strain effects in embryonic stem cells have been found to be mediated by activin A and TGF- β (35). In our study, follistatin and antibodies to activin A partially inhibited the up-regulation of $\alpha 11$ inside the three-dimensional collagen gel in SV40 MEFs and, importantly, also in primary MEFs. The fact that activin A is regulated by follistatin adds another level of control in the cytokine-integrin response to strain. Although the Smad phosphorylation in two-dimensional conditions was readily monitored upon the addition of exogenous TGF- $\beta 1$ or activin A, the signal appeared low in three-dimensional gels, and only low levels of phospho-Smad3 were detected. In a previous study using HaCaT cells, it was similarly observed that activin A stimulated cells via Smad3, whereas TGF- $\beta 1$ stimulated cells in a Smad2- and Smad3-dependent manner (70). We have no good explanation for the lower effectiveness of anti-activin A and follistatin in comparison with the effect of SB-431542 in regulating $\alpha 11$ synthesis within an attached collagen gel. It is possi-

ble that the lower effect of anti-activin A antibodies is related to affinity issues. The modest increase in βA activin mRNA as judged by qPCR data does not lend support to a model where activin A is the main driver of strain-sensitive responses. It is possible that activin A instead plays a maintenance role, and a more important mechanosensitive ligand remains to be identified.

The *in vivo* implications of our findings are that $\alpha 11$ expression might be regulated by mechanical strain-dependent mechanisms during normal tissue homeostasis, during wound healing, and in fibrosis. *In vivo*, the integrin subunit $\alpha 11$ is highly expressed in fibroblasts of ectomesenchymal origin in the head and in fibroblasts derived from different types of mesoderm (24). Consistent with the data presented here, a common finding is that the highest $\alpha 11$ expression is noted at sites of mechanical tension, such as the periodontal ligament, tendons, ligaments, periosteum, and perichondrium and in the intervertebral discs (20, 24). Activin A in the developing embryo has been reported to be highly expressed in the craniofacial mesenchyme as well as in perichondrium and intervertebral discs (71). TGF- $\beta 1$ shows a wide expression pattern (72) but is also expressed at sites of mechanical tension. Our data suggest that a signaling mechanism involving activin A and TGF- $\beta 1$ might regulate $\alpha 11$ expression at these sites *in vivo*.

Role for $\alpha 11$ in Myofibroblast Differentiation—Members of the TGF- β family might thus be involved in restricting the *in vivo* expression pattern of $\alpha 11$ to different sets of fibroblasts. The recent finding that $\alpha 11$ is also expressed in dermal fibroblasts (26, 74) together with the expression of $\alpha 11$ in skin myofibroblasts shown here underscores the importance of examining a role for $\alpha 11\beta 1$ in myofibroblasts, which are key cells mediating wound contraction (75).

Recent reports show that cell-generated mechanical tension can activate TGF- $\beta 1$ in a strain-dependent manner (3). These assays and other assays demonstrating a role for αv -integrins (76) have been performed with cells cultured in serum, thus favoring RGD-binding integrins as the receptors mediating an effect on myofibroblast differentiation. Indirect binding to collagen fibrils can also occur when cells are grown in collagen gels in the presence of serum or alternatively cultured for extended periods of time, allowing synthesis of non-collagen integrin ligands (77). Binding of αv -ligands to collagen most likely mediates the $\alpha v\beta 3$ -dependent rapid collagen remodeling that has been observed upon release of attached collagen lattices (78).

In vivo, fibroblasts are surrounded by a matrix dominated by fibrillar collagens. Hence, the role of collagen-binding integrins during myofibroblast differentiation might have high biological relevance. In support of such a role for $\beta 1$ integrins in myofibroblasts, a recent study demonstrates that a lack of $\beta 1$ integrins in dermal fibroblasts protects mice from bleomycin-induced skin fibrosis (15). It will be important to determine the nature of the $\alpha\beta 1$ integrin heterodimer involved in regulating the fibrotic response in dermal myofibroblasts and determine if this $\beta 1$ integrin-dependent mechanism involves a TGF- $\beta 1$ activating role or whether the integrin acts as a downstream effector (79).

Due to the high endogenous expression of α -SMA in MEFs at early passages, we could not use these cells to analyze the role of

$\alpha 11$ during myofibroblast differentiation. We have previously noted a high expression of $\alpha 11$ in developing mouse and human cornea (20, 24) and have determined that $\alpha 11\beta 1$ is a major collagen-binding integrin on cultured HCFs of low passage number (46). We chose HCFs for functional studies of the role of $\alpha 11$ in myofibroblast differentiation because these cells appeared to express low α -SMA at early passages. In order to promote the cell-collagen interaction over the cell-fibronectin interactions, we opted for analysis in the three-dimensional collagen matrix, which would also have best fit our analysis in MEFs. However, due to technical problems, maybe related to poor cell survival of the primary cells in the gels, we had to resort to inducing differentiation on collagen I-coated surfaces. Our results showing that both activin A and TGF- β stimulate myofibroblast differentiation of corneal fibroblasts are in agreement with previous work (40). However, HCFs displayed a relatively weak up-regulation of $\alpha 11$ and in our hands showed a lower induction of α -SMA in response to exogenously added activin A when compared with the induction produced by TGF- $\beta 1$.

Thus, our failure to demonstrate a role for $\alpha 11$ in activin A-mediated myofibroblast differentiation in HCFs might be related to the low level of myofibroblast differentiation induced by activin A under our experimental conditions. Previous studies have indicated active activin A synthesis in fibroblasts, and activin A is one secreted growth factor from fibroblast feeder cell layers that maintains embryonic stem cell pluripotency (80). In the skin, a role for autocrine and paracrine activin A signaling has been suggested in post-burn scars (81). Finally, *ex vivo* experiments with scar fibroblasts implicate activin A in Akt-mediated signaling in myofibroblast differentiation (81). In summary, we believe that activin A is a good candidate to regulate $\alpha 11$ levels in various fibroblasts *in vivo*.

Despite the problems regarding activin A-induced myofibroblast differentiation in the HCFs, the cells were useful to demonstrate a role for $\alpha 11\beta 1$ in TGF- $\beta 1$ -stimulated myofibroblast differentiation. A recent study suggests that $\alpha 1\beta 1$ is important in a variety of human myofibroblasts *in vivo* (82), whereas a separate study suggests that $\alpha 2\beta 1$ regulates myofibroblast differentiation inside three-dimensional collagen matrices (19). The studies involving $\alpha 2\beta 1$ were performed prior to the existing knowledge about $\alpha 11$, and it will thus be important to analyze these two collagen receptors with similar techniques under similar conditions to estimate their relative contribution to the myofibroblast differentiation process. Because, in addition to being expressed on fibroblasts, $\alpha 1\beta 1$ (83) and $\alpha 2\beta 1$ (26) both are present on endothelial cells, it can be difficult to separate their role on myofibroblasts from their angiogenic effect during pathological processes in tissues. This is a complication that is not likely to be observed with $\alpha 11$, which is restricted to fibroblasts.

From the above discussion, we speculate that different collagen-binding integrins have different roles in different types of fibroblasts and that the type of collagen-binding integrin that influences myofibroblast differentiation might be tissue- and context-dependent. This is similar to the situation with αv integrins, where $\alpha v\beta 3$ and $\alpha v\beta 5$ have been reported to influence myofibroblast differentiation in cells isolated from the mouth

Mechanical Strain Control of $\alpha 11$ Integrin

and skin, whereas $\alpha \beta 5$ alone seems to have this property in kidney fibroblasts (77). In future studies, it will be important to investigate the role of TGF- $\beta 1$ and activin A in $\alpha 11$ expression and function in fibroblasts/myofibroblasts of different origins (73).

In summary, we show here that $\alpha 11 \beta 1$ is regulated by mechanical strain and members of the TGF- β superfamily. It is tempting to suggest that the striking expression of $\alpha 11$ at sites of mechanical tension reflects inherent structural properties of $\alpha 11 \beta 1$, making it particularly suitable for consolidating cell-collagen interactions. The finding that $\alpha 11 \beta 1$ regulates myofibroblast differentiation warrants further studies of its role in pathological conditions involving fibroblasts.

Acknowledgments—We are grateful to Fatima Pedrosa-Domellöf and Anders Behndig (both at University of Umeå, Sweden) for providing human keratocytes.

REFERENCES

- Hinz, B. (2007) *J. Invest. Dermatol.* **127**, 526–537
- Tomasek, J. J., Gabbiani, G., Hinz, B., Chaponnier, C., and Brown, R. A. (2002) *Nat. Rev. Mol. Cell Biol.* **3**, 349–363
- Wipff, P. J., Rifkin, D. B., Meister, J. J., and Hinz, B. (2007) *J. Cell Biol.* **179**, 1311–1323
- Desmoulière, A., Guyot, C., and Gabbiani, G. (2004) *Int. J. Dev. Biol.* **48**, 509–517
- Hinz, B., Dugina, V., Ballestrem, C., Wehrle-Haller, B., and Chaponnier, C. (2003) *Mol. Biol. Cell* **14**, 2508–2519
- Wipff, P. J., and Hinz, B. (2008) *Eur. J. Cell Biol.* **87**, 601–615
- Popova, S. N., Lundgren-Akerlund, E., Wiig, H., and Gullberg, D. (2007) *Acta Physiol.* **190**, 179–187
- Popova, S. N., Barczyk, M., Tiger, C. F., Beertsen, W., Zigrino, P., Aszodi, A., Miosge, N., Forsberg, E., and Gullberg, D. (2007) *Mol. Cell. Biol.* **27**, 4306–4316
- Zhu, C. Q., Popova, S. N., Brown, E. R., Barsyte-Lovejoy, D., Navab, R., Shih, W., Li, M., Lu, M., Jurisica, I., Penn, L. Z., Gullberg, D., and Tsao, M. S. (2007) *Proc. Natl. Acad. Sci. U.S.A.* **104**, 11754–11759
- Munger, J. S., Huang, X., Kawakatsu, H., Griffiths, M. J., Dalton, S. L., Wu, J., Pittet, J. F., Kaminski, N., Garat, C., Matthay, M. A., Rifkin, D. B., and Sheppard, D. (1999) *Cell* **96**, 319–328
- Mu, D., Cambier, S., Fjellbirkeland, L., Baron, J. L., Munger, J. S., Kawakatsu, H., Sheppard, D., Broadus, V. C., and Nishimura, S. L. (2002) *J. Cell Biol.* **157**, 493–507
- Yang, Z., Mu, Z., Dabovic, B., Jurukovski, V., Yu, D., Sung, J., Xiong, X., and Munger, J. S. (2007) *J. Cell Biol.* **176**, 787–793
- Aluwihare, P., Mu, Z., Zhao, Z., Yu, D., Weinreb, P. H., Horan, G. S., Violette, S. M., and Munger, J. S. (2009) *J. Cell Sci.* **122**, 227–232
- Moustakas, A., Pardali, K., Gaal, A., and Heldin, C. H. (2002) *Immunol. Lett.* **82**, 85–91
- Liu, S., Kapoor, M., Denton, C. P., Abraham, D. J., and Leask, A. (2009) *Arthritis Rheum.* **60**, 2817–2821
- Paszek, M. J., Zahir, N., Johnson, K. R., Lakins, J. N., Rozenberg, G. I., Gefen, A., Reinhart-King, C. A., Margulies, S. S., Dembo, M., Boettiger, D., Hammer, D. A., and Weaver, V. M. (2005) *Cancer Cell* **8**, 241–254
- Levental, K. R., Yu, H., Kass, L., Lakins, J. N., Egeblad, M., Erler, J. T., Fong, S. F., Csiszar, K., Giaccia, A., Weninger, W., Yamauchi, M., Gasser, D. L., and Weaver, V. M. (2009) *Cell* **139**, 891–906
- Ng, C. P., Hinz, B., and Swartz, M. A. (2005) *J. Cell Sci.* **118**, 4731–4739
- Arora, P. D., Narani, N., and McCulloch, C. A. (1999) *Am. J. Pathol.* **154**, 871–882
- Tiger, C. F., Fougèrouse, F., Grundström, G., Velling, T., and Gullberg, D. (2001) *Dev. Biol.* **237**, 116–129
- Zhang, Z. G., Bothe, I., Hirche, F., Zweers, M., Gullberg, D., Pfitzer, G., Krieg, T., Eckes, B., and Aumailley, M. (2006) *J. Cell Sci.* **119**, 1886–1895
- Persson, U., Izumi, H., Souchelnytskyi, S., Itoh, S., Grimsby, S., Engström, U., Heldin, C. H., Funa, K., and ten Dijke, P. (1998) *FEBS Lett.* **434**, 83–87
- Jat, P. S., Cepko, C. L., Mulligan, R. C., and Sharp, P. A. (1986) *Mol. Cell. Biol.* **6**, 1204–1217
- Popova, S. N., Rodriguez-Sánchez, B., Lidén, A., Betsholtz, C., Van Den Bos, T., and Gullberg, D. (2004) *Dev. Biol.* **270**, 427–442
- Arany, P. R., Flanders, K. C., Kobayashi, T., Kuo, C. K., Stuelten, C., Desai, K. V., Tuan, R., Rennard, S. L., and Roberts, A. B. (2006) *Proc. Natl. Acad. Sci. U.S.A.* **103**, 9250–9255
- Zweers, M. C., Davidson, J. M., Pozzi, A., Hallinger, R., Janz, K., Quondamatteo, F., Leutgeb, B., Krieg, T., and Eckes, B. (2007) *J. Invest. Dermatol.* **127**, 467–478
- Whitehead, R. H., and Joseph, J. L. (1994) *Epithelial Cell Biol.* **3**, 119–125
- Gullberg, D., Tingström, A., Thuresson, A. C., Olsson, L., Terracio, L., Borg, T. K., and Rubin, K. (1990) *Exp. Cell Res.* **186**, 264–272
- Abe, M., Harpel, J. G., Metz, C. N., Nunes, I., Loskutoff, D. J., and Rifkin, D. B. (1994) *Anal. Biochem.* **216**, 276–284
- Lu, N., Heuchel, R., Barczyk, M., Zhang, W. M., and Gullberg, D. (2006) *Matrix Biol.* **25**, 118–129
- Livak, K. J., and Schmittgen, T. D. (2001) *Methods* **25**, 402–408
- Klein, C. E., Dressel, D., Steinmayer, T., Mauch, C., Eckes, B., Krieg, T., Bankert, R. B., and Weber, L. (1991) *J. Cell Biol.* **115**, 1427–1436
- Delvoye, P., Wiliquet, P., Levêque, J. L., Nusgens, B. V., and Lapière, C. M. (1991) *J. Invest. Dermatol.* **97**, 898–902
- Chiquet, M., Renedo, A. S., Huber, F., and Flück, M. (2003) *Matrix Biol.* **22**, 73–80
- Saha, S., Ji, L., de Pablo, J. J., and Palecek, S. P. (2008) *Biophys. J.* **94**, 4123–4133
- Heino, J., Ignatz, R. A., Hemler, M. E., Crouse, C., and Massagué, J. (1989) *J. Biol. Chem.* **264**, 380–388
- DaCosta Byfield, S., Major, C., Laping, N. J., and Roberts, A. B. (2004) *Mol. Pharmacol.* **65**, 744–752
- de Winter, J. P., ten Dijke, P., de Vries, C. J., van Achterberg, T. A., Sugino, H., de Waele, P., Huylebroeck, D., Verschueren, K., and van den Eijnden-van Raaij, A. J. (1996) *Mol. Endocrinol.* **116**, 105–114
- Ohga, E., Matsuse, T., Teramoto, S., Katayama, H., Nagase, T., Fukuchi, Y., and Ouchi, Y. (1996) *Biochem. Biophys. Res. Commun.* **228**, 391–396
- You, L., and Kruse, F. E. (2002) *Invest. Ophthalmol. Vis. Sci.* **43**, 72–81
- Chipev, C. C., and Simon, M. (2002) *BMC Dermatol.* **2**, 13
- De Wever, O., Demetter, P., Mareel, M., and Bracke, M. (2008) *Int. J. Cancer* **123**, 2229–2238
- Papetti, M., Shujath, J., Riley, K. N., and Herman, I. M. (2003) *Invest. Ophthalmol. Vis. Sci.* **44**, 4994–5005
- Varas, L., Ohlsson, L. B., Honeth, G., Olsson, A., Bengtsson, T., Wiberg, C., Bockermann, R., Järnum, S., Richter, J., Pennington, D., Johnstone, B., Lundgren-Akerlund, E., and Kjellman, C. (2007) *Stem Cells Dev.* **16**, 965–978
- Maltseva, O., Folger, P., Zekaria, D., Petridou, S., and Masur, S. K. (2001) *Invest. Ophthalmol. Vis. Sci.* **42**, 2490–2495
- Bystrom, B., Carracedo, S., Behndig, A. B., Gullberg, D., and Pedrosa-Domellof, F. (2009) *Invest. Ophthalmol. Vis. Sci.* **50**, 5044–5053
- Johnson, K. R., Leight, J. L., and Weaver, V. M. (2007) *Methods Cell Biol.* **83**, 547–583
- Marastoni, S., Ligresti, G., Lorenzon, E., Colombatti, A., and Mongiat, M. (2008) *Connect. Tissue Res.* **49**, 203–206
- Kalluri, R., and Zeisberg, M. (2006) *Nat. Rev. Cancer* **6**, 392–401
- Gaggioli, C., Hooper, S., Hidalgo-Carcedo, C., Grosse, R., Marshall, J. F., Harrington, K., and Sahai, E. (2007) *Nat. Cell Biol.* **9**, 1392–1400
- Schwartz, M. A., and Ginsberg, M. H. (2002) *Nat. Cell Biol.* **4**, E65–68
- Orr, A. W., Ginsberg, M. H., Shattil, S. J., Deckmyn, H., and Schwartz, M. A. (2006) *Mol. Biol. Cell* **17**, 4686–4697
- Abair, T. D., Sundaramoorthy, M., Chen, D., Heino, J., Ivaska, J., Hudson, B. G., Sanders, C. R., Pozzi, A., and Zent, R. (2008) *Exp. Cell Res.* **314**, 3593–3604
- Eckes, B., Zweers, M. C., Zhang, Z. G., Hallinger, R., Mauch, C., Aumailley, M., and Krieg, T. (2006) *J. Investig. Dermatol. Symp. Proc.* **11**, 66–72
- Pelham, R. J., Jr., and Wang, Y. (1997) *Proc. Natl. Acad. Sci. U.S.A.* **94**, 13661–13665

56. Hinz, B. (2009) *Curr. Rheumatol. Rep.* **11**, 120–126
57. Patwari, P., and Lee, R. T. (2008) *Circ. Res.* **103**, 234–243
58. Wipff, P. J., and Hinz, B. (2009) *J. Body Mov. Ther.* **13**, 121–127
59. Solon, J., Levental, I., Sengupta, K., Georges, P. C., and Janmey, P. A. (2007) *Biophys. J.* **93**, 4453–4461
60. Chiquet-Ehrismann, R., Tannheimer, M., Koch, M., Brunner, A., Spring, J., Martin, D., Baumgartner, S., and Chiquet, M. (1994) *J. Cell Biol.* **127**, 2093–2101
61. Flück, M., Giraud, M. N., Tunç, V., and Chiquet, M. (2003) *Biochim. Biophys. Acta* **1593**, 239–248
62. Kessler, D., Dethlefsen, S., Haase, I., Plomann, M., Hirche, F., Krieg, T., and Eckes, B. (2001) *J. Biol. Chem.* **276**, 36575–36585
63. Lindahl, G. E., Chambers, R. C., Papakrivopoulou, J., Dawson, S. J., Jacobsen, M. C., Bishop, J. E., and Laurent, G. J. (2002) *J. Biol. Chem.* **277**, 6153–6161
64. Rios, H. F., Ma, D., Xie, Y., Giannobile, W. V., Bonewald, L. F., Conway, S. J., and Feng, J. Q. (2008) *J. Periodontol.* **79**, 1480–1490
65. Maier, S., Lutz, R., Gelman, L., Sarasa-Renedo, A., Schenk, S., Grashoff, C., and Chiquet, M. (2008) *Biochim. Biophys. Acta* **1783**, 1150–1162
66. Lu, N., Carracedo, S., Ranta, J., Heuchel, R., Soininen, R., and Gullberg, D. (2009) *Matrix Biol.*, in press
67. Miano, J. M., Long, X., and Fujiwara, K. (2007) *Am. J. Physiol. Cell Physiol.* **292**, C70–C81
68. Chiquet, M., Gelman, L., Lutz, R., and Maier, S. (2009) *Biochim. Biophys. Acta* **1793**, 911–920
69. Lamar, J. M., Pumiglia, K. M., and DiPersio, C. M. (2008) *Cancer Res.* **68**, 7371–7379
70. Shimizu, A., Kato, M., Nakao, A., Imamura, T., ten Dijke, P., Heldin, C. H., Kawabata, M., Shimada, S., and Miyazono, K. (1998) *Genes Cells* **3**, 125–134
71. Feijen, A., Goumans, M. J., and van den Eijnden-van Raaij, A. J. (1994) *Development* **120**, 3621–3637
72. Lehnert, S. A., and Akhurst, R. J. (1988) *Development* **104**, 263–273
73. Hinz, B., Phan, S. H., Thannickal, V. J., Galli, A., Bochaton-Piallat, M. L., and Gabbiani, G. (2007) *Am. J. Pathol.* **170**, 1807–1816
74. Svendsen, Ø. S., Barczyk, M. M., Popova, S. N., Lidén, A., Gullberg, D., and Wügg, H. (2009) *Arterioscler. Thromb. Vasc. Biol.* **29**, 1864–1870
75. Eckes, B., Zigrino, P., Kessler, D., Holtkötter, O., Shephard, P., Mauch, C., and Krieg, T. (2000) *Matrix Biol.* **19**, 325–332
76. Asano, Y., Ihn, H., Yamane, K., Jinnin, M., and Tamaki, K. (2006) *Am. J. Pathol.* **168**, 499–510
77. Lygoe, K. A., Norman, J. T., Marshall, J. F., and Lewis, M. P. (2004) *Wound Repair Regen.* **12**, 461–470
78. Cooke, M. E., Sakai, T., and Mosher, D. F. (2000) *J. Cell Sci.* **113**, 2375–2383
79. Gullberg, D. (2009) *Matrix Biol.* **28**, 383
80. Beattie, G. M., Lopez, A. D., Bucay, N., Hinton, A., Firpo, M. T., King, C. C., and Hayek, A. (2005) *Stem Cells* **23**, 489–495
81. Fumagalli, M., Musso, T., Vermi, W., Scutera, S., Daniele, R., Alotto, D., Cambieri, I., Ostorero, A., Gentili, F., Caposio, P., Zucca, M., Sozzani, S., Stella, M., and Castagnoli, C. (2007) *Exp. Dermatol.* **16**, 600–610
82. Rodriguez, A., Karen, J., Gardner, H., Gerdin, B., Rubin, K., and Sundberg, C. (2009) *J. Cell. Mol. Med.* **13**, 3449–3462
83. Pozzi, A., Wary, K. K., Giancotti, F. G., and Gardner, H. A. (1998) *J. Cell Biol.* **142**, 587–594