

AUTHOR'S CORRECTION

Dynamics and Determinants of *Staphylococcus aureus* Carriage in Infancy: the Generation R Study

Ankie Lebon, Joost A. M. Labout, Henri A. Verbrugh, Vincent W. V. Jaddoe, Albert Hofman, Willem van Wamel, Henriette A. Moll, and Alex van Belkum

The Generation R Study Group, Erasmus Medical Center, Rotterdam, The Netherlands; Department of Pediatrics, Erasmus Medical Center-Sophia Children's Hospital, Rotterdam, The Netherlands; Department of Medical Microbiology and Infectious Diseases, Erasmus Medical Center, Rotterdam, The Netherlands; and Department of Epidemiology, Erasmus Medical Center, Rotterdam, The Netherlands

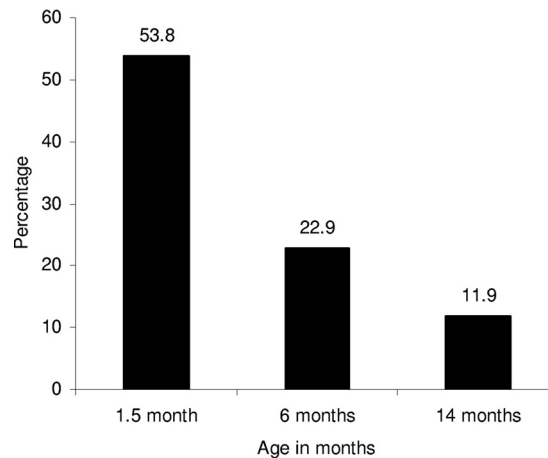
Volume 46, no. 10, p. 3517–3521, 2008. We recently discovered that mistakes were made during the development of the database that was fundamental to the research we presented in the article identified above. Numerical mistakes were inadvertently included in Table 1; also, the statistical analyses were performed with the wrong data. The numbers of individuals included in the gender data in Table 1 were wrong. As a consequence, all of the data for the other parameters listed in that table were miscalculated. The corrected table, in which many of the values had to be changed, is given below.

TABLE 1. Determinants of *Staphylococcus aureus* carriage in the first year of life

Parameter	Value for infants ^a :			
	Not colonized (0–1) (n = 292)	Colonized (2>) (n = 76)	OR (95% CI)	aOR (95% CI)
Gender				
Female	148 (53.4)	29 (38.2)	1.00	1.00
Male	129 (46.6)	47 (61.8)	1.81 (1.08–3.03)	1.84 (1.00–3.41)
Gestational age (mo)	40.3 (37.7–42.0)	40.3 (37.1–42.4)	0.90 (0.76–1.06)	0.87 (0.69–1.10)
Birth weight (g)	3,600 (2,759–4,300)	3,542 (2,728–4,573)	1.00 (1.00–1.00)	1.00 (1.00–1.00)
Breast-feeding at 6 mo				
No	189 (70.5)	49 (65.3)	1.00	1.00
Yes	79 (29.5)	26 (34.7)	1.26 (0.73–2.16)	1.34 (0.69–2.60)
Mother's educational level				
Higher education	172 (62.8)	53 (69.7)	1.00	1.00
Lower/intermediate education	102 (37.2)	23 (30.3)	0.74 (0.43–1.27)	0.59 (0.27–1.25)
Mother's prenatal smoking				
No	242 (90.6)	65 (90.3)	1.00	1.00
Yes	25 (9.4)	7 (9.7)	1.11 (0.46–2.67)	2.78 (0.54–14.26)
Mother's postnatal smoking				
No	201 (88.5)	59 (89.4)	1.00	1.00
Yes	26 (11.5)	7 (10.6)	0.98 (0.41–2.37)	0.37 (0.07–2.00)
Siblings				
No	157 (60.4)	44 (58.7)	1.00	1.00
Yes	103 (39.6)	31 (41.3)	1.05 (0.63–1.77)	0.99 (0.52–1.90)
Day-care attendance				
No	54 (23.4)	21 (30.9)	1.00	1.00
Yes	177 (76.6)	47 (69.1)	0.70 (0.39–1.26)	0.58 (0.29–1.18)

^a Values are given as number (%) of infants unless indicated otherwise. Values are means or medians (5 to 95% range) for variables with skewed distribution. A total of 353 infants provided nasal swabs at all three collection moments. Data were missing on breast-feeding (n = 10), mother's educational level (n = 3), mother's prenatal smoking (n = 14), mother's postnatal smoking (n = 60), siblings (n = 18), and day-care attendance (n = 54).

These mistakes also resulted in errors in Fig. 1. The revised version of the figure is given below.



In addition, data in the text are corrected below according to the values given in the new version of Table 1.

Statistical relevance remains as originally reported, although in some cases the exact data changed slightly. Note that some of the data relating to statistical significance in the text are corrected below according to the updated version of the table. Despite the errors presented in the published article, all of the conclusions presented in the paper, including the biological conclusions, still stand.

Page 3520, column 1, line 3: "170 (48%)" should read "129 (46.6%)."

Page 3520, column 1, line 4: "55 (61.8%)" should read "47 (61.8%)."

Page 3520, column 1, line 5: "39.5% ($n = 161$)" should read "39.6% ($n = 103$)."

Page 3520, column 1, line 6: "40.9% ($n = 36$)" should read "41.3% ($n = 31$)."

Page 3520, column 1, line 7: "30.9% ($n = 106$)" should read "29.5% ($n = 79$)."

Page 3520, column 1, lines 8 and 9: "36.4% ($n = 32$)" should read "34.7% ($n = 26$)."

Page 3520, column 1, lines 9 and 10: "Two hundred thirty-one (77.5%)" should read "One hundred seventy-seven (76.6%)."

Page 3520, column 1, line 11: "54 (68.4%)" should read "47 (69.1%)."

Page 3520, column 1, line 14: "52.1% (231 of 443 infants)" should read "53.8%."

Page 3520, column 1, line 15: "21.7% (96 of 443 infants)" should read "22.9%."

Page 3520, column 1, lines 15 and 16: "12.9% (57 of 443 infants)" should read "11.9%."

Page 3520, column 1, lines 36 and 37: "(adjusted odds ratio [aOR], 2.09; 95% confidence interval [CI], 1.17 to 3.72)" should read "(adjusted odds ratio [aOR], 1.84; 95% confidence interval [CI], 1.00 to 3.84)."

Page 3520, column 1, line 39: "aOR, 1.03; 95% CI, 0.57 to 1.87" should read "aOR, 0.99; 95% CI, 0.52 to 1.90."