



## Morphological and molecular characterisation of a new anamorphic genus *Cheirosporium*, from freshwater in China

L. Cai<sup>1</sup>, X.Y. Guo<sup>2</sup>, K.D. Hyde<sup>3,4</sup>

### Key words

ascomycetes  
Pleosporales  
systematics  
taxonomy

**Abstract** *Cheirosporium* gen. nov. is characterised by the production of sporodochial conidiomata, semi-macronematous to macronematous conidiophores that possess several distinct sterile branches, and cheiroid, smooth-walled conidia with rhexolytic secession. The 28S rDNA and ITS rDNA operon of this taxon were amplified and sequenced. A BLAST search revealed low homology between *Cheirosporium triseriale* and existing sequences in public databases, supporting the hypothesis that the species is new to science. Phylogenetic analysis showed that *C. triseriale* groups with *Dictyosporium* and allied species, and nests within the Pleosporales (Dothideomycetes, Ascomycota). *Cheirosporium* is morphologically distinct from the cheirosporous genera *Cheiromyces*, *Cheiromycina*, *Dictyosporium*, *Digitomyces*, *Digitodesmium* and *Pseudodictyosporium* and these differences are discussed.

**Article info** Received: 28 January 2008; Accepted: 17 April 2008; Published: 23 April 2008.

### INTRODUCTION

Freshwater fungi are taxonomically diverse, with more than 1 000 documented species, which include representatives from almost all major fungal classes (Tsui & Hyde 2003, Vijaykrishna et al. 2006). These fungi colonise many different substrates such as submerged plant litter, and aquatic organisms (Vijaykrishna & Hyde 2006). Because most plant litter in freshwater is of terrestrial origin, the aquatic origin of most freshwater fungi is debatable. Many of the known freshwater anamorphic species have also been recorded from terrestrial habitats, although this is not generally the case with teleomorphs (Tsui & Hyde 2003, Vijaykrishna et al. 2006).

Cheirosporous hyphomycetes were studied recently by Tsui et al. (2006) and Kodsueb et al. (2007), while Ho et al. (2000) reviewed cheirosporous genera and provided a key based on morphological characters. Tsui et al. (2006) investigated the phylogenetic relationships among several cheirosporous genera and found that *Dictyosporium* and allied genera are closely related and form a strong monophyletic grouping in Pleosporales. New species of cheirosporous fungi have also recently been described, such as *Aquaticheirospora*, including a single species with synnematos conidiomata (Kodsueb et al. 2007). We are studying the freshwater fungi of China (e.g. Cai et al. 2006a, Cai & Hyde 2007), and collected an interesting cheirosporous taxon from Lijiang, Yunnan. Critical morphological examination and phylogenetic analysis based on 28S and

ITS rDNA sequences showed that this fungus represents a new ascomycetous anamorph that could not be linked to a teleomorphic genus. It is, therefore, described here as *Cheirosporium triseriale* gen. & sp. nov.

### MATERIALS AND METHODS

Submerged woody substrata were collected by Cai from a small stream in Yunnan, China. Samples were processed and examined following the methods described in Cai et al. (2003). Observations and photomicrographs were made from material mounted in water. Conidia were measured at their widest point. The range between minimum and maximum values for microscopic measurements is given. Mean values are in brackets with 'n' being the number of measurements. The holotype is deposited at the Mycological Herbarium of the Chinese Academy of Science (HMAS) in Beijing, China.

### DNA extraction, PCR and sequencing

DNA was extracted from the herbarium specimen HMAS 180703 using E.Z.N.A. Forensic DNA Extraction Kit (Omega product No: D3529-01/02). A sporodochial mass was removed from the specimen for extraction using fine forceps, following the manufacturer's protocols. Partial 28S rDNA and ITS rDNA were amplified using fungal specific primers LROR and LR5 (Vilgalys & Hester 1990) and ITS1 and ITS4 (White et al. 1990), respectively. The polymerase chain reaction (PCR) was carried out in a 50 µL reaction volume and the PCR thermal cycles based on the profile detailed in Cai et al. (2006b). PCR amplification was confirmed on 1 % agarose electrophoresis gels stained with ethidium bromide. Amplicons were then purified using minicolumns, purification resin and buffer, following the manufacturer's protocols (Amersham product code: 27-9602-01). DNA sequencing was performed using the primers mentioned above in an Applied Biosystem 3730 DNA Analyser at the Genome Research Centre, The University of Hong Kong.

<sup>1</sup> Centre for Research in Fungal Diversity, School of Biological Sciences, The University of Hong Kong, Pokfulam Road, Hong Kong; corresponding author e-mail: mrcaillei@gmail.com.

<sup>2</sup> Longtengwu 8-3-502, Huilongguan, Changping District, Beijing, 102208, PR China.

<sup>3</sup> International Fungal Research & Development Centre, The Research Institute of Resource Insects, Chinese Academy of Forestry, Belongsi, Kunming 650224, Yunnan Province, PR China.

<sup>4</sup> School of Science, Mae Fah Luang University, Tasud, Chiang Rai 57100, Thailand.

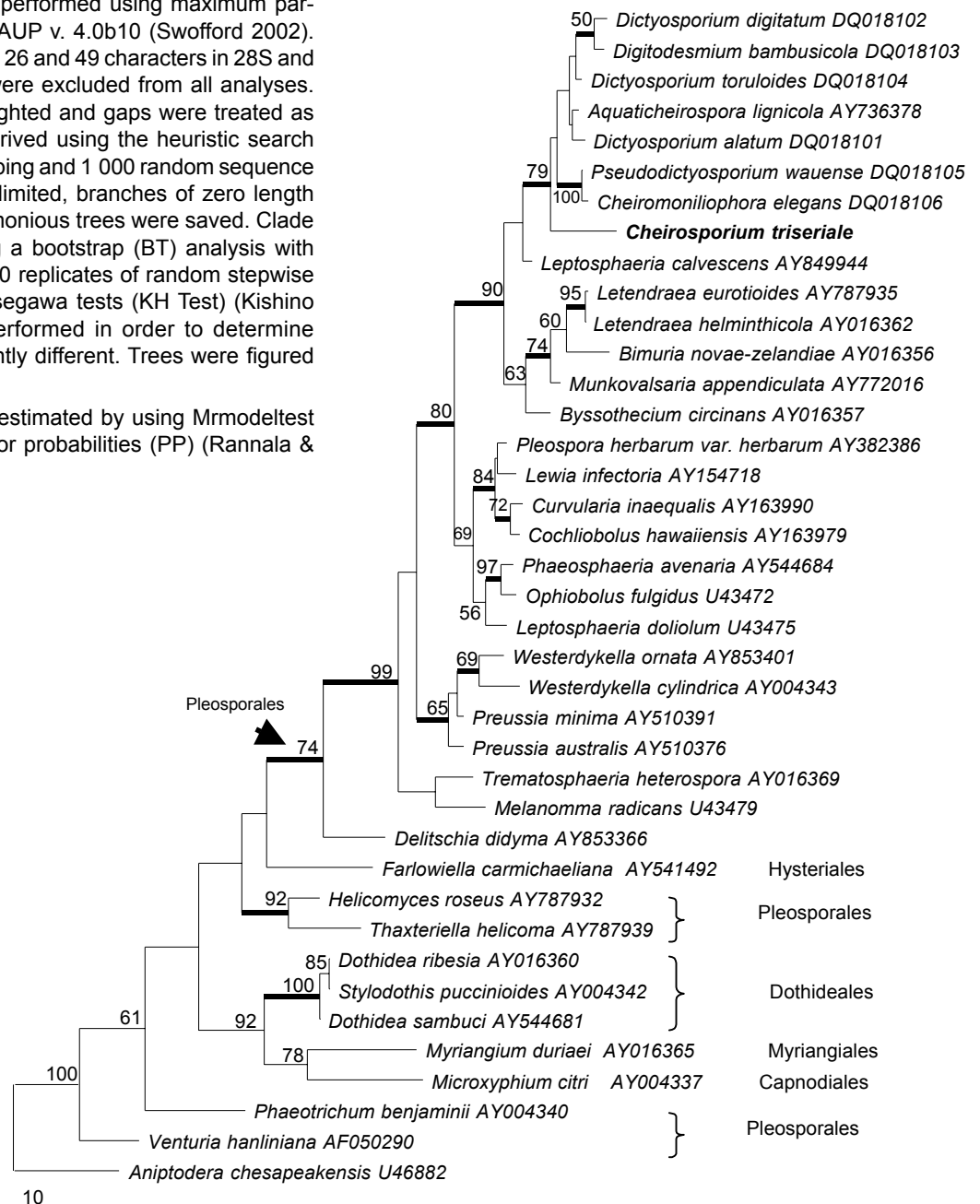
### Sequence alignment and phylogenetic analysis

Sequences were aligned using BioEdit (Hall 1999). Two data sets were analysed; the 28S rDNA data set and ITS/5.8S rDNA data set. Novel sequences (EU413953, EU413954), together with reference sequences obtained from GenBank, were aligned using Clustal X (Thomson et al. 1997). Reference sequences used in this study are mainly from Lumbsch et al. (2005) and Tsui et al. (2006), both studies providing 5 or more reference sequences. Alignment was manually adjusted to allow maximum alignment and minimise gaps.

Phylogenetic analyses were performed using maximum parsimony as implemented in PAUP v. 4.0b10 (Swofford 2002). Ambiguously aligned regions, 26 and 49 characters in 28S and ITS data sets respectively, were excluded from all analyses. Characters were equally weighted and gaps were treated as missing data. Trees were derived using the heuristic search option with TBR branch swapping and 1 000 random sequence additions. Maxtrees were unlimited, branches of zero length were collapsed and all parsimonious trees were saved. Clade stability was assessed using a bootstrap (BT) analysis with 1 000 replicates, each with 10 replicates of random stepwise addition of taxa. Kishino-Hasegawa tests (KH Test) (Kishino & Hasegawa 1989) were performed in order to determine whether trees were significantly different. Trees were figured using Treeview (Page 1996).

The model of evolution was estimated by using Mrmodeltest 2.2 (Nylander 2004). Posterior probabilities (PP) (Rannala &

Yang 1996, Zhaxybayeva & Gogarten 2002) were determined by Markov Chain Monte Carlo sampling (BMCMC) in MrBayes v. 3.0b4 (Huelsenbeck & Ronquist 2001). Six simultaneous Markov chains were run for 1 000 000 generations and trees were sampled every 100th generation (resulting 10 000 total trees). The first 2 000 trees, which represented the burn-in phase of the analyses, were discarded and the remaining 8 000 trees were used for calculating posterior probabilities (PP) in the majority rule consensus tree.



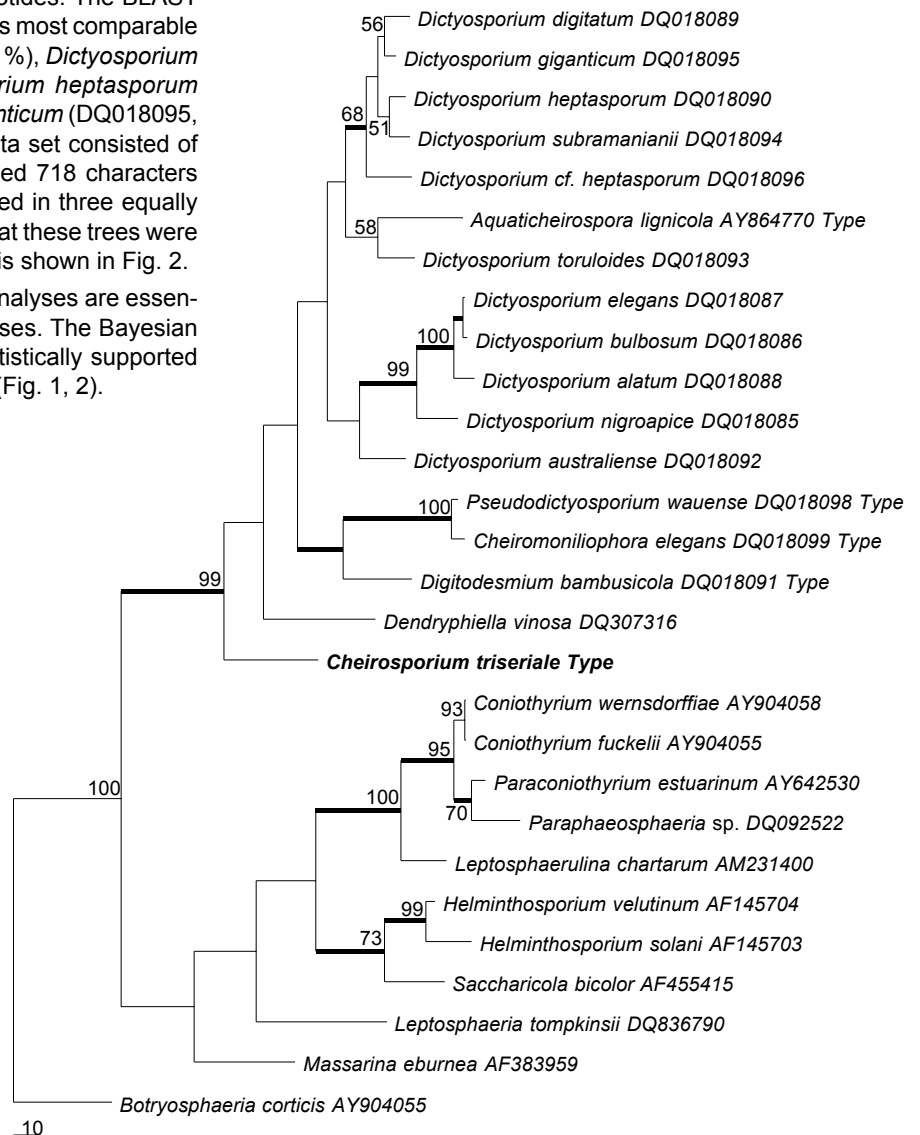
**Fig. 1** Phylogenetic tree generated from parsimony analysis based on 28S rDNA sequences. Data were analysed with random addition sequence, and treating gaps as missing data. Bootstrap values  $\geq 50\%$  are shown above or below branches. Thickened branches indicate Bayesian posterior probabilities  $\geq 95\%$ . The tree is rooted with *Aniptodera chesapeakeensis*.

## RESULTS

The LSU sequence obtained from the herbarium specimen consisted of 724 nucleotides. A BLAST search in NCBI (www.ncbi.nih.gov/blast) showed that this sequence is most similar to *Aquaticheirosora lignicola* (AY736378, 93 % identity), *Munkovalsaria appendiculata* (AY772016, 89 %), *Leptosphaeria calvescens* (AY849944, 89 %) and *Montagnula opulenta* (AY678086, 89 %). The 28S rDNA data set consisted of 40 sequences. The final data set included 537 characters after alignment. Only part of the *Cheirosporium triseriale* 28S rDNA sequence was used in the analysis, as most of the included reference sequences from NCBI are shorter than ours. Parsimony analysis resulted in 28 equally parsimonious trees. The KH test showed that these trees were not significantly different. One of these trees is shown in Fig. 1.

The ITS sequence consisted of 533 nucleotides. The BLAST search in NCBI showed that this sequence is most comparable to *Dictyosporium digitatum* (DQ018089, 83 %), *Dictyosporium toruloides* (DQ018093, 82 %), *Dictyosporium heptasporum* (DQ018090, 82 %) and *Dictyosporium giganticum* (DQ018095, 82 %) (Tsui et al. 2006). The ITS rDNA data set consisted of 28 sequences. The final data set comprised 718 characters after alignment. Parsimony analysis resulted in three equally parsimonious trees. The KH test showed that these trees were not significantly different. One of the trees is shown in Fig. 2.

The topologies generated from Bayesian analyses are essentially similar to that of the parsimony analyses. The Bayesian trees are therefore not shown, but the statistically supported clades are marked in the parsimony trees (Fig. 1, 2).



**Fig. 2** Phylogenetic tree generated from parsimony analysis based on ITS rDNA sequences. Data were analysed with random addition sequence and treating gaps as missing data. Bootstrap values  $\geq 50\%$  are shown above or below branches. Thickened branches indicate Bayesian posterior probabilities  $\geq 95\%$ . The tree is rooted with *Botryosphaeria corticis*.

## Taxonomy

### *Cheirosporium triseriale* gen. & sp. nov.

*Cheirosporium* L. Cai & K.D. Hyde, gen. nov. — MycoBank MB506570.

Coloniae in substrato naturali sporodochiales, dispersae, punctiformes, brunneae, atro-brunneae vel nigrae. Conidiophora semi-macronematosa vel macronematosa, mononematosa, septata, flexuosa, irregulariter ramosa, ramis steriles vel fertiles; pars sterilis elongatis, obclavata. Cellulae conidiogae monoblasticae, terminales, determinatae, non-prolificantes. Conidia acrogena, holoblastica, solitaria, sicca, olivacea vel brunnea, cheiroidea, levia. Conidiorum secessio rhexolytica.

*Etymology.* Referring to the cheiroid conidia in this genus.

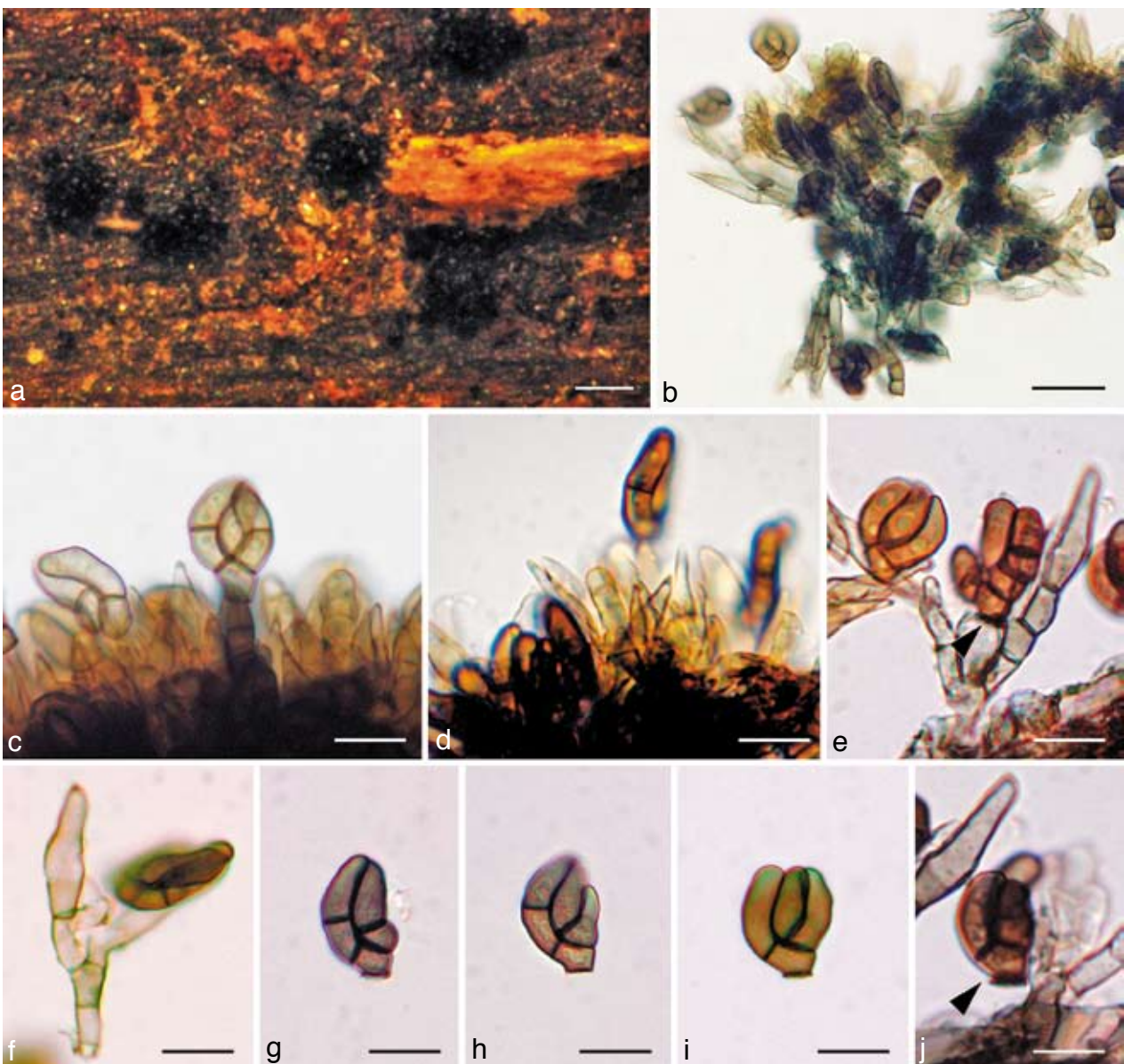
*Conidiomata* on the natural substratum sporodochial, scattered, punctiform, brown, dark brown or black. *Mycelium* immersed or partly superficial, consisting of branched, septate, smooth, thin-walled, subhyaline to light brown hyphae. *Stroma* none. *Setae* and *hyphopodia* absent. *Conidiophores* semi-macronematous to macronematous, mononematous, septate, flexuous, irregularly branched, branches sterile or fertile; sterile branches with an elongate, relatively enlarged, obclavate cell. *Conidiogenous cells* monoblastic, terminal, determinate, not proliferating. *Conidia* acrogenous, holoblastic, solitary, dry, olivaceous to brown, cheiroid, smooth-walled. *Conidial secession* rhexolytic.

*Type species.* *Cheirosporium triseriale*.

***Cheirosporium triseriale*** L. Cai & K.D. Hyde, *sp. nov.* —  
MycoBank MB506551; Fig. 3a–j

Sporodochia in substrato naturali 150–300 µm diam, dispersa, punctiformia, brunnea, atro-brunnea vel nigra. Conidiophora 50–120 × 4–6 µm, semi-macronematosa vel macronematosa, mononematosa, hyalina vel subhyalina, levia, septata, flexuosa, irregulariter ramosa, ramis steriles vel fertiles; pars sterilis elongatis, obclavata. Cellulae conidiogenae monoblasticae, terminales, determinatae, hyalinae vel subhyalinae, doliiformes vel late cylindraceae, non-prolificantes. Conidia 15–25 × 11–15 µm, acrogena, holoblastica, solitaria, sicca, olivacea vel brunnea, cheiroidea, levia, basi truncata triramifera, complanata, ramis 0–1-septatis, cylindricis. Conidiorum secessio rhexolytica.

*Etymology.* Referring to the conidia of this species, which produce three arms of cells in series.



**Fig. 3** *Cheirosporium triseriale*. a. Sporodochial conidiomata on the host surface; b. squash mount of the conidiophores and conidia; c, d. conidiophores bearing conidia (note numerous sterile apices of the conidiophores); e, f. individual conidiophores. Note the sterile branches; g–j. conidia. — Scale bars: a = 200 µm, b = 40 µm, c–j = 20 µm.



*Sporodochia* on the natural substratum 150–300 µm diam, scattered, punctiform, brown, dark brown or black. *Mycelium* immersed or partly superficial, consisting of branched, septate, smooth, thin-walled, subhyaline to light brown hyphae. *Stroma* none. *Setae* and *hyphopodia* absent. *Conidiophores* 50–120 × 4–6 µm, semi-macronematous to macronematous, mononematous, hyaline to subhyaline, smooth-walled, septate, flexuous, irregularly branched, branches sterile or fertile; sterile branches with an elongate, relatively enlarged, obclavate, apical cell, 12–18 µm long, 4.5–6 µm wide. *Conidiogenous cells* monoblastic, terminal, determinate, hyaline to subhyaline, doliiform or broad-cylindrical, not proliferating. *Conidia* 15–25 × 11–15 µm (av. = 19 × 12 µm, n = 30), acrogenous, holoblastic, solitary, dry, olivaceous to brown, cheiroid, mostly flattened in one plane, smooth-walled, truncate at the base, with three laterally appressed, 0–1-septate, cylindrical arms, arising from a common basal cell. *Conidial secession* rhexolytic.

Habitat — Saprobic on submerged woody bamboo culms.

Known distribution — China.

Teleomorph — Unknown.

*Specimen examined.* CHINA, Yunnan, Lijiang, Heilongtan Park (26° 30' N, 100° 13' E), on submerged wood in a small stream, 16 July 2005, L. Cai, holotype herb. HMAS 180703, paratype herb. IFRD 100001.

## DISCUSSION

*Cheirosporium triseriale* is unique among cheirosporous hyphomycetes because of its unusual combination of morphological characters. These include:

- The conidiophores of *Ch. triseriale* branch to form two to several distinct sterile branches, in which there is a distinct, enlarged, hyaline, obclavate apical cell. This character has not been reported from cheirosporous genera. Similar sterile branches occur among conidiophores in species of genera such as *Cylindrocladium*, *Falcocladium*, *Vesicliadiella* and *Tubercularia*, and in the first three, sterile branches have been regarded as a diagnostic generic character (Seifert 1985, Crous & Wingfield 1994, Crous et al. 1994).
- In *Ch. triseriale*, conidial secession is typically rhexolytic (Fig. 3e, j), which differs from other cheirosporous genera.
- The conidiophores of *Ch. triseriale* are semi-macronematous to macronematous.

The most similar genus to *Cheirosporium* is *Digitomyces*, which includes species that also produce 2–3-armed cheirosporous conidia (Mercado et al. 2003). *Digitomyces* was established for *Dictyosporium verrucosum* (Tzean & Chen 1989, Goh et al. 1999, Mercado et al. 2003), characterised by verruculose conidia and micronematous to macronematous conidiophores (Mercado et al. 2003). *Digitomyces* differs from *Cheirosporium* in lacking sterile branches, and the conidial secession is schizolytic with a truncate conidial base. The verruculose cell wall of conidia in *Digitomyces* is also different to that of *Cheirosporium*, but wall ornamentation has been shown to have less phylogenetic significance in distinguishing genera (e.g. Cai et al. 2006b) Whether *Digitomyces* merits generic rank awaits further investigation, and it shares many morphological similarities with *Dictyosporium*.

*Cheirosporium triseriale* should also be compared with species of *Dictyosporium*, because of their similar conidial morphology (Sutton 1985, Goh et al. 1999). In addition to the sterile branches and the rhexolytic conidial secession, *Cheirosporium* is further distinguished by its semi-macronematous to macronematous conidiophores (Goh et al. 1999). *Cheirosporium* and *Cheirosporium* can also be differentiated from *Cheirosporium* by the production of distoseptate conidia (Berkeley 1875, Sutton & Muhr 1986). Species of *Pseudodictyosporium* have macronematous conidiophores but they produce enteroblastic conidiogenous cells and lack sporodochial conidiomata (Matsushima 1971). Species of *Digitodesmium* produce sporodochial conidiomata but the conidial arms are discrete and mostly with narrow, incurved apical cells (Kirk 1981, Ho et al. 1999).

The partial sequences of 28S rDNA and ITS rDNA confirmed the relative taxonomic distance of the new taxon from other cheirosporous genera. No close relatives were found. The highest ITS sequence similarity between *Cheirosporium triseriale* and sequences available in public databases is only 83 % with *Dictyosporium digitatum* (DQ018089). The morphological distinction and low sequence homology with existing taxa indicates the need to establish a new genus for this taxon. Parsimony analyses provided indications of its phylogenetic position. In both 28S rDNA and ITS rDNA trees, *Ch. triseriale* clustered with high bootstrap support in Pleosporales. This is consistent with its morphological characters, because most cheirosporous genera have affinities with the Pleosporales (Tsui et al. 2006).

The 28S rDNA phylogeny shows that *Ch. triseriale* nests in a clade with *Cheironomiliophora elegans*, *Pseudodictyosporium wauense*, *Aquaticheirospora lignicola*, *Digitodesmium bambusicola* and several *Dictyosporium* species (Tsui et al. 2006). This is indicative of the close relationships among these cheirosporous genera. Similar findings were obtained from phylogenies derived from the ITS rDNA data set. In the ITS rDNA tree, *Ch. triseriale* groups with other cheirosporous genera in the Pleosporales. *Cheirosporium triseriale* is basal and phylogenetically distant in the clade. In both trees, *Ch. triseriale* clustered with high bootstrap support in the clade of cheirosporous anamorphs.

Our phylogenetic analyses indicate that the current taxonomy of anamorphic cheirosporous genera needs further evaluation. For example, the generic status of *Aquaticheirospora* should be reconsidered. *Dictyosporium* and *Aquaticheirospora* have similar conidial form and type of conidiogenesis (Kodsueb et al. 2007), but differ because the latter has synnematos conidiomata. In our analyses, *Aquaticheirospora lignicola* nested amongst *Dictyosporium* species and lacks sufficient phylogenetic distance to warrant separate generic status (Fig. 2), indicating that the synnematos character may not be of importance in generic delineation. In their phylogenetic analysis, Kodsueb et al. (2007) did not include any cheirosporous anamorphs because these were not available in GenBank at that time. Similarly, our ITS trees also reveal little phylogenetic distance between the monotypic genera *Pseudodictyosporium* and *Cheironomiliophora*. The two species have 98.7 % similarity in the ITS locus. Morphologically, *Pseudodictyosporium*

and *Cheiromoniliophora* are similar in having macronematous conidiophores, non-sporodochial conidiomata and flattened conidia with three arms. They are distinguished by the nature of the conidiogenous cells, which are holoblastic and proliferate sympodially in *Cheiromoniliophora* and enteroblastic and proliferate percurrently in *Pseudodictyosporium*. It has been suggested that the two genera should possibly be synonymised (Tsui et al. 2006).

In the ITS tree, the branch leading into the clade with *Ch. triseriale* at its base is strongly supported. One may argue that *Aquatichiospora*, *Pseudodictyosporium*, *Cheiromoniliophora*, *Digitodesmium* and *Cheiosporium* might be all congeneric with *Dictyosporium*. Based on our present understanding of this group of fungi, it is not possible to fully resolve the generic boundaries of these genera. Regardless of the subjectivity in taxonomic practice, the important implication of this study is that these cheiosporous anamorphs merit further study of evolutionary biology. The morphological characters used to distinguish these genera should also be re-evaluated using multiple-gene phylogenies.

**Acknowledgements** The University of Hong Kong is thanked for providing LC a postgraduate scholarship. This research was funded by Hong Kong Research Grant Council no. HKU7230/02M. Helen Leung and Heidi Kong at the University of Hong Kong are thanked for technical help.

## REFERENCES

- Berkeley MJ. 1875. Notices of North American fungi. *Grevillea* 3: 97–112.
- Cai L, Hyde KD. 2007. Anamorphic fungi from freshwater habitats in China: *Dictyosporium* tetrasporum and *Exserticlavula yunnanensis* spp. nov., and two new records for *Pseudofuscophilalis lignicola* and *Pseudobotrytis terrestris*. *Mycoscience* 48: 290–296.
- Cai L, Ji KF, Hyde KD. 2006a. Variation between freshwater and terrestrial fungal communities on decaying bamboo culms. *Antonie van Leeuwenhoek International Journal of General and Molecular Microbiology* 89: 293–301.
- Cai L, Jeewon R, Hyde KD. 2006b. Phylogenetic investigations of Sordariaceae based on multiple gene sequences and morphology. *Mycological Research* 110: 137–150.
- Cai L, Zhang KQ, McKenzie EHC, Hyde KD. 2003. Freshwater fungi from bamboo and wood submerged in the Liput river in the Philippines. *Fungal Diversity* 13: 1–12.
- Crous PW, Wingfield MJ. 1994. A monograph of *Cylindrocladium*, including anamorphs of *Calonectria*. *Mycotaxon* 51: 341–435.
- Crous PW, Wingfield MJ, Alfenas AC, Silveira SF. 1994. *Cylindrocladium naviculatum* sp. nov. and two new vesiculate hyphomycete genera, *Falcocladium* and *Vesicladiella*. *Mycotaxon* 50: 441–458.
- Goh TK, Hyde KD, Ho WH, Yanna. 1999. A revision of the genus *Dictyosporium* with descriptions of three new species. *Fungal Diversity* 2: 65–100.
- Hall TA. 1999. BioEdit: a user-friendly biological sequence alignment editor and analysis program for Windows 95/98/NT. *Nucleic Acids Symposium Series* 41: 95–98.
- Ho WH, Hodgkiss IJ, Hyde KD. 2000. *Cheiomycetes lignicola*, a new cheiosporous anamorphic species from Hong Kong. *Mycologia* 92: 582–588.
- Ho WH, Hyde KD, Hodgkiss IJ. 1999. *Digitodesmium recurvum*, a new species of chirosporous hyphomycetes from Hong Kong. *Mycologia* 91: 900–904.
- Huelsenbeck JP, Ronquist FR. 2001. MRBAYES: Bayesian inference of phylogenetic trees. *Biometrics* 17: 754–755.
- Kirk PM. 1981. New or interesting microfungi. *Transactions British Mycological Society* 76: 71–88.
- Kishino H, Hasegawa M. 1989. Evaluation of the maximum likelihood estimate of the evolutionary tree topologies from DNA sequence data, and the branching order of Hominoidea. *Journal of Molecular Evolution* 29: 170–179.
- Kodsueb R, Lumyong S, Ho WH, Hyde KD, McKenzie EHC, Jeewon R. 2007. Morphological and molecular characterization of *Aquatichiospora* and phylogenetics of Massarinaceae (Pleosporales). *Botanical Journal of the Linnean Society* 155: 283–296.
- Lumbsch HT, Schmitt I, Lindemuth R, Miller A, Mangold A, Fernandez F, Huhndorf S. 2005. Performance of four ribosomal DNA regions to infer higher-level phylogenetic relationships of inoperculate euascomycetes (Leotiomyceta). *Molecular Phylogenetics and Evolution* 34: 512–524.
- Matsushima T. 1971. *Microfungi of the Solomon Islands and Papua-New Guinea*. Published by the author, Kobe.
- Mercado SA, Caldich M, Gene J, Guarro J, Delgado G. 2003. *Digitomyces*, a new genus of hyphomycetes with cheiroid conidia. *Mycologia* 95: 860–864.
- Nylander JAA. 2004. MrModeltest 2.0. Program distributed by the author. Evolutionary Biology Centre, Uppsala University.
- Page RDM. 1996. TREEVIEW: An application to display phylogenetic trees on personal computers. *Computer Applications in the Biosciences* 12: 357–358.
- Rannala B, Yang Z. 1996. Probability distribution of molecular evolutionary trees: a new method of phylogenetic inference. *Journal of Molecular Evolution* 43: 304–311.
- Seifert K. 1985. A monograph of *Stilbella*, and some allied hyphomycetes. *Studies in Mycology* 27: 1–235.
- Sutton BC. 1985. Notes on some deuteromycete genera with cheiroid or digitate brown conidia. *Proceedings of the Indian Academy of Science (Plant Science)* 94: 229–244.
- Sutton BC, Muhr LE. 1986. *Cheiomycina flabelliformis* gen. et sp. nov. on *Picea* from Sweden. *Nordic Journal of Botany* 6: 831–836.
- Swofford DL. 2002. PAUP\*: Phylogenetic Analysis Using Parsimony (\*and other methods). Version 4b10. Sinauer Associates, Sunderland, USA.
- Thomson JD, Gibson TJ, Plewniak F, Jeanmougin F, Higgins DG. 1997. The Clustal\_X windows interface: Flexible strategies for multiple sequence alignment aided by quality analysis tools. *Nucleic Acids Research* 25: 4876–4882.
- Tsui CKM, Berbee ML, Jeewon R, Hyde KD. 2006. Molecular phylogeny of *Dictyosporium* and allied genera inferred from ribosomal DNA. *Fungal Diversity* 21: 157–166.
- Tsui CKM, Hyde KD. 2003. Freshwater mycology. *Fungal Diversity Research Series* 10: 1–350.
- Tzean SS, Chen JL. 1989. Two new species of *Dictyosporium* from Taiwan. *Mycological Research* 92: 497–502.
- Vijaykrishna D, Hyde KD. 2006. Inter- and intra stream variation of lignicolous freshwater fungi in tropical Australia. *Fungal Diversity* 21: 203–224.
- Vijaykrishna D, Jeewon R, Hyde KD. 2006. Molecular taxonomy, origins and evolution of freshwater ascomycetes. *Fungal Diversity* 23: 351–390.
- Vilgalys R, Hester M. 1990. Rapid genetic identification and mapping of enzymatically amplified ribosomal DNA from several *Cryptococcus* species. *Journal of Bacteriology* 172: 4238–4246.
- White TJ, Bruns T, Lee S, Taylor J. 1990. Amplification and direct sequencing of fungal ribosomal RNA genes for phylogenetics. In: Innis MA, Gelfand DH, Sninsky JJ, White TJ (eds), *PCR protocols: a guide to methods and applications*: 315–322. Academic Press, San Diego, USA.
- Zhaxybayeva O, Gogarten JP. 2002. Bootstrap, Bayesian probability and maximum likelihood mapping: exploring new tools for comparative genome analyses. *Genomics* 3: 1–15.