

A Murine Model of Contact Lens–Associated *Fusarium* Keratitis

Yan Sun,¹ Jyotsna Chandra,² Pranab Mukherjee,² Loretta Szczotka-Flynn,¹ Mahmoud A. Ghannoum,² and Eric Pearlman¹

PURPOSE. *Fusarium solani* and *F. oxysporum* were the causative organisms of the 2005/2006 outbreak of contact lens-associated fungal keratitis in the United States. The present study was an investigation of the ability of *F. oxysporum* grown as a biofilm on silicone hydrogel contact lenses to induce keratitis.

METHODS. A clinical isolate of *F. oxysporum* was grown as a biofilm on lotrafilcon A contact lenses, and a 2-mm diameter punch was placed on the abraded corneal epithelium of either untreated or cyclophosphamide-treated C57BL/6 mice or of IL-1R1^{-/-}, MyD88^{-/-}, TLR2^{-/-}, or TLR4^{-/-} mice. After 2 hours, the lens was removed, and corneal opacification, colony forming units (CFUs), and histopathology were evaluated.

RESULTS. C57BL/6 mice developed severe corneal opacification within 24 hours and resolved after four days. In contrast, corneal opacification progressed in cyclophosphamide-treated mice, and was associated with unimpaired fungal growth in the cornea, and with hyphae penetrating into the anterior chamber. The phenotype of MyD88^{-/-} and IL-1R1^{-/-} mice was similar to that of cyclophosphamide-treated animals, with significantly impaired cellular infiltration and fungal clearance. Although TLR4^{-/-} mice developed a cellular infiltrate and corneal opacification similar to C57BL/6 mice, the CFU count was significantly and consistently higher.

CONCLUSIONS. *Fusarium* grown as a biofilm on silicone hydrogel contact lenses can induce keratitis on injured corneas, with disease severity and fungal killing dependent on the innate immune response, including IL-1R1, MyD88, and TLR4. (*Invest Ophthalmol Vis Sci.* 2010;51:1511–1516) DOI:10.1167/iops.09-4237

Filamentous fungi such as *Fusarium* and *Aspergillus* are an important cause of microbial keratitis in hot and humid regions of the world such as India and southern China, where agriculture-related activity is a major risk factor.^{1–3} Although these organisms are not a frequent cause of disease in more

temperate climates, an outbreak of *Fusarium* keratitis was reported in 2005 and 2006 in regions of the United States not usually associated with fungal keratitis^{4,5} and also in France, Hong Kong, and Singapore.^{6–9} A Centers for Disease Control (CDC) *Fusarium* investigation team reported 318 cases of *Fusarium* keratitis in the United States, of which 94% involved soft contact lens wear.¹⁰ A subsequent CDC report reported an association with contact lens wear and that the number of cases of *Fusarium* keratitis dropped sharply after the withdrawal of a commercial lens care solution (ReNu with MoistureLoc; Bausch & Lomb, Tampa, FL).¹¹

Fusarium attaches firmly to and can even penetrate soft contact lenses¹²; therefore, the ability of *Fusarium* to form a biofilm on lenses or lens cases is a possible risk factor for developing keratitis.^{13–15} We demonstrated previously that clinical isolates of *Fusarium* can form biofilm on soft contact lenses, that biofilm architecture depends on the type of contact lens, and that *Fusarium* growing as a biofilm is more resistant to antimicrobials and contact lens solutions than are planktonic forms of the same organisms.¹⁶ We also characterized the host response in the cornea in a prior study using a murine model of keratitis in which conidia are injected into the corneal stroma.¹⁷

In the present study, we developed a model of contact lens-associated *Fusarium* keratitis, in which organisms are grown as biofilm on silicone hydrogel lenses and are then placed on an abraded mouse cornea. We found that *Fusarium* grown under those conditions, where hyphae rather than conidia are the stage of growth that infect the cornea, induce keratitis that is regulated by innate immunity, in particular by the IL-1 receptor, Toll-like receptor (TLR)-4, and the common adaptor molecule MyD88.

METHODS

Source of *Fusarium*

Fusarium oxysporum FOC33-a strain (MRL8996) was isolated from a case of contact lens-associated fungal keratitis during the 2005 to 2006 outbreak, and was used in our previous studies on biofilm formation and in trauma-induced keratitis.^{16,17} Animals were managed according to the ARVO Statement for the Use of Animals in Ophthalmic and Vision Research.

Fusarium Culture and Biofilm Formation

Fusarium was cultured at 37°C in Sabouraud dextrose broth (SDB; Difco Laboratories, Detroit, MI) in a shaking incubator. For biofilm development, conidia were harvested from a 40-hour broth culture by standard filtration methods and counted, and 1 × 10⁶ conidia in PBS were incubated with lotrafilcon A contact lenses (purchased from CibaVision, Duluth, MN) for 90 minutes at 37°C (adherence phase). After the lenses were gently washed in 4 mL PBS, they were incubated in SDB at 37°C for 48 hours on a rocking platform (biofilm growth

From the ¹Department of Ophthalmology and Visual Sciences, and ²Center for Medical Mycology, Case Western Reserve University, Cleveland, Ohio.

Supported by National Institutes of Health Grants R01EY18612 (EP), P30EY11373 (EP), and R01DE17846 (MAG), and by The Research to Prevent Blindness Foundation, and the Ohio Lions Eye Research Foundation.

Submitted for publication June 30, 2009; revised August 28, 2009; accepted September 14, 2009.

Disclosure: **Y. Sun**, None; **J. Chandra**, None; **P. Mukherjee**, None; **L. Szczotka-Flynn**, None; **M.A. Ghannoum**, None; **E. Pearlman**, None

Corresponding author: Eric Pearlman, Department of Ophthalmology and Visual Sciences, Case Western Reserve University, 10900 Euclid Avenue, Cleveland, OH 44106; eric.pearlman@case.edu.

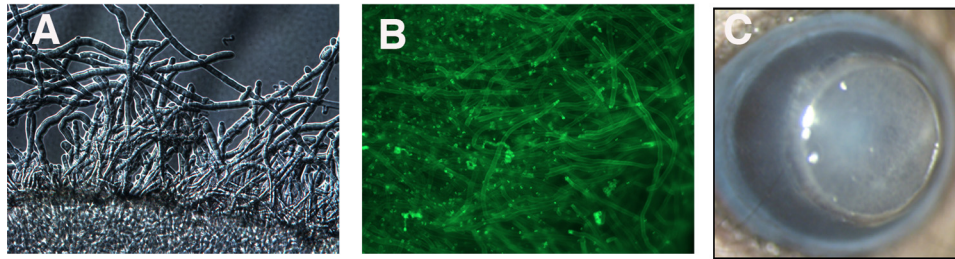


FIGURE 1. Murine model of *Fusarium* biofilm keratitis. *Fusarium* conidia were incubated 90 minutes with lotrafilcon A contact lenses, washed, and incubated a further 48 hours. (A) *Fusarium* hyphae associated with the contact lens (DIC microscopy). (B) After incubation with FITC-ConA, showing hyphae and extracellular matrix. (C) Murine model: 2-mm-diameter punch of a contact lens with attached *Fusarium* biofilm on the corneal surface of a C57BL/6 mouse. Original magnification: (A, B) $\times 400$; (C) $\times 20$.

phase). We have reported that these culture conditions lead to development of densely packed, live hyphae on the contact lens, which were positive to tetrazolium XTT for live organisms and to concanavalin A (ConA), which stains mannan residues on the fungal cell wall and in extracellular matrix.¹⁶

Source of Mice

C57BL/6 mice and IL-1R1^{-/-} mice (6–8 weeks old) were purchased from the Jackson Laboratory (Bar Harbor, ME). TLR2^{-/-}, TLR4^{-/-}, and MyD88^{-/-} mice were obtained from Shizuo Akira (Research Institute for Microbial Disease; Osaka University, Osaka, Japan).

Murine Model of *Fusarium* Biofilm-Induced Keratitis

Mice were anesthetized by intraperitoneal injection of 0.4 mL 2,2,2-tribromoethanol, and the corneal epithelium was subjected to either three parallel scratches or abrasion of a 1-mm diameter area of the central corneal epithelium (Algerbrush; Richmond Products, Albuquerque, NM), as described in our previous studies.^{18,19} A 2-mm diameter punch from the contact lenses with attached biofilm was then placed on the abraded corneal surface. After 2 hours in which the mice remained anesthetized on a heating pad, the contact lenses were removed. At each time point thereafter, corneas were examined by bright field microscopy, mice were euthanized, and eyes were either homogenized and the number of CFUs was determined, or eyes were processed for histology.

Quantification of Fungi in Infected Eyes

Whole eyes were homogenized under sterile conditions in 1 mL PBS (Mixer Mill MM300; Qiagen, Valencia, CA) at 33 Hz for 4 minutes. A series of log dilutions were performed in replicate, and plated onto Sabouraud's agar (Difco). The plates were incubated at 37°C for 40 hours, and the number of CFUs (in the lowest dilution) was determined by direct counting. The lower limit of detection was 10 organisms.

Histologic Preparations

For histologic analysis, the eyes were fixed in formaldehyde and embedded in paraffin. Five-micrometer sections were stained by periodic acid-Schiff (PAS) solution (Sigma-Aldrich, St. Louis, MO), counterstained with hematoxylin, and examined by light microscopy.

Detection of Cytokines in the Cornea

Mouse corneas were excised using a 2-mm trephine, and corneal tissue was homogenized (Mixer Mill MM300; Qiagen) for 4 minutes at 30 cycles per second. After centrifugation, cytokine levels in soluble corneal extracts were determined by sandwich ELISA according to the manufacturer's directions (R&D Systems, Minneapolis, MN). Absorp-

tion was measured at 450 nm on a microplate reader (VersaMax with SoftMaxPro software 4.7.1; Molecular Devices, Sunnyvale, CA).

Statistics

Statistical significance ($P < 0.05$) was determined with either an unpaired Students *t*-test or ANOVA with the Tukey post hoc analysis for multiple comparisons (Prism 4; GraphPad, San Diego, CA).

RESULTS

Contact Lens–Associated *Fusarium* Keratitis in Normal and Immunosuppressed C57BL/6 Mice

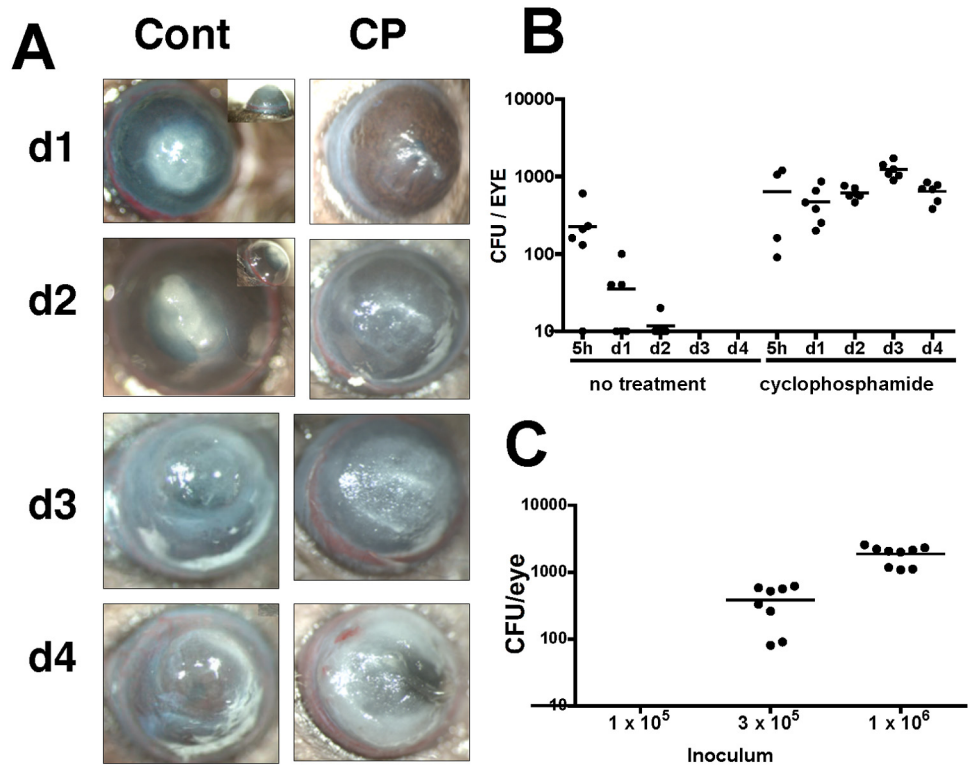
We reported that biofilm architecture varies according to silicone hydrogel lens type and that a more adherent biofilm forms on lotrafilcon lenses than on other lens types.¹⁶ *Fusarium* conidia were therefore incubated with lotrafilcon A silicone hydrogel contact lenses (CibaVision) for 2 hours and washed, and biofilm was allowed to develop over 48 hours, as described.¹⁶ Figure 1A shows a fully developed biofilm imaged by DIC microscopy. Extracellular matrix, including mannan residues on hyphae, were detected by FITC-labeled ConA (Fig. 1B).

To determine the role of the host response in development of keratitis, C57BL/6 mice were either left untreated (immunocompetent) or given systemic cyclophosphamide (immunosuppressed), the corneas were abraded, and a 2-mm diameter silicone hydrogel soft contact lens containing *Fusarium* biofilm was placed on the ocular surface for 2 hours (Fig. 1C). The lens was then removed, and CFUs were assessed at day 1 to day 4.

Figure 2A shows representative infected corneas of either normal, immunocompetent C57BL/6 mice, or cyclophosphamide-treated C57BL/6 mice. Immunocompetent C57BL/6 mice developed severe opacification within 24 hours, which progressed for 72 hours but did not develop into more severe disease. In contrast, immunosuppressed C57BL/6 mice developed severe corneal opacification, and the corneas were found to perforate by day 5 (not shown). Corneal opacification was not detected when uninfected contact lenses were added to an abraded cornea; furthermore, intact corneas incubated with *Fusarium* biofilm did not induce keratitis, indicating that the intact corneal epithelium is an effective barrier to infection.

Figure 2B shows that in C57BL/6 mice with a 1-mm epithelial abrasion, the number of *Fusarium* CFUs decreased over 72 hours. In marked contrast, cyclophosphamide-treated mice showed no reduction in CFUs during this time period. The minimum number of conidia required for biofilm formation and for development of keratitis in cyclophosphamide-treated mice is between 1×10^5 and 3×10^5 /mL PBS, as shown in Figure 2C. Together, these findings demonstrate that the host response in

FIGURE 2. Biofilm-associated *Fusarium* keratitis in untreated and cyclophosphamide-treated C57BL/6 mice. C57BL/6 mice were either untreated or immunosuppressed by intraperitoneal injection of cyclophosphamide (CP). The corneas were abraded, and silicone hydrogel contact lenses (Iofortra) with *Fusarium* biofilm were placed on the ocular surface for 2 hours and examined at indicated time points thereafter. (A) Representative corneas of immunocompetent C57BL/6 mice, which were given a 1-mm-diameter abrasion, exhibited severe opacification on day 1 and day 2, and resolved after day 4. In contrast, corneas of CP-treated mice, which received three parallel scratches, showed increasing opacity, over time and perforation after day 4 (not shown). (B) Eyes of immunocompetent and immunosuppressed (CP) mice were enucleated on days 1 to 4, and CFUs were counted. Data points represent individual corneas and mice, and the data are combined from two repeat experiments. $P < 0.05$ between untreated and CP-treated mice at each time point except 5 hours. (C) The limit of detection of *Fusarium* colonies in CP-treated mice. Biofilm was generated with a starting inoculum as shown (1×10^5 , 3×10^5 , and 1×10^6 conidia per mL PBS). Corneas were then abraded and incubated with contact lenses with adherent biofilm, mice were euthanized and CFUs were counted on day 1.



immunocompetent animals inhibits growth and replication of *Fusarium*, thereby preventing corneal perforation.

Regulation of Contact Lens–Associated *Fusarium* Keratitis by IL-1R1 and MyD88

MyD88 is a common adaptor molecule in the signaling pathways of IL-1R1 and all TLRs except TLR3.²⁰ The role of IL-1R1 and MyD88 in contact lens biofilm–associated fungal keratitis was determined by abrading corneas of C57BL/6, IL-1R1^{-/-}, and MyD88^{-/-} mice with three parallel scratches, and placing contact lenses with adherent *Fusarium* biofilm on the corneal surface as before.

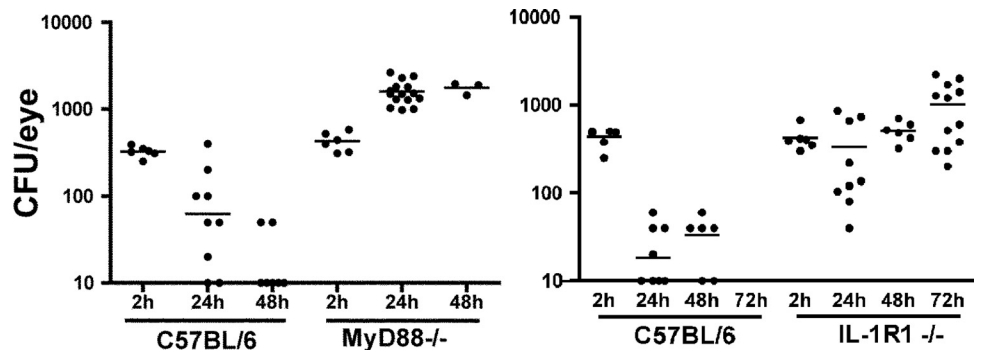
As shown in Figure 3, the number of CFUs recovered from the C57BL/6 mice decreased at 24 hours and 48 hours, and *Fusarium* were not detected after 72 hours. In contrast, CFUs were significantly elevated in IL-1R1^{-/-} and MyD88^{-/-} mice, implicating a specific role for this pathway in killing *Fusarium*. Conversely, histologic analysis of C57BL/6 corneas (Fig. 4) showed a pronounced cellular infiltrate on days 1 and 2 after

infection, comprised mostly of neutrophils (not shown). In contrast, cellular infiltration was impaired in MyD88^{-/-} and IL-1R1^{-/-} mice at 24 and 48 hours after infection. These observations indicate that IL-1R1 and MyD88 regulate neutrophil recruitment to the corneal stroma in addition to regulating fungal growth.

Dependence of CXCL1/KC Production on MyD88

Earlier reports from our laboratory and others noted that the neutrophil chemokine CXCL1/KC is rapidly produced in the corneal stroma and that neutrophil recruitment to this site is dependent on production of CXCL1 and on expression of CXCR2 on neutrophils.^{21–24} We therefore examined CXCL1 expression in corneas after exposure to *Fusarium* biofilm. Corneas of the C57BL/6 and MyD88^{-/-} mice were abraded by three parallel scratches, and a 2-mm diameter punch from a contact lens with attached *Fusarium* biofilm was placed on the corneal surface. After 3 hours, the corneas were dissected

FIGURE 3. *Fusarium* survival in MyD88^{-/-} and IL-1R1^{-/-} mice. Corneas of C57BL/6, MyD88^{-/-}, and IL-1R1^{-/-} mice were abraded with three parallel scratches and exposed to contact lenses with adherent *Fusarium* biofilm. At each time point, the eyes were homogenized and the CFUs were assessed. Data points represent individual corneas and mice combined from two similar experiments. $P < 0.05$ between C57BL/6 and MyD88^{-/-} mice at 24 and 48 hours, and between C57BL/6 and IL-1R1^{-/-} mice at 24, 48, and 72 hours.



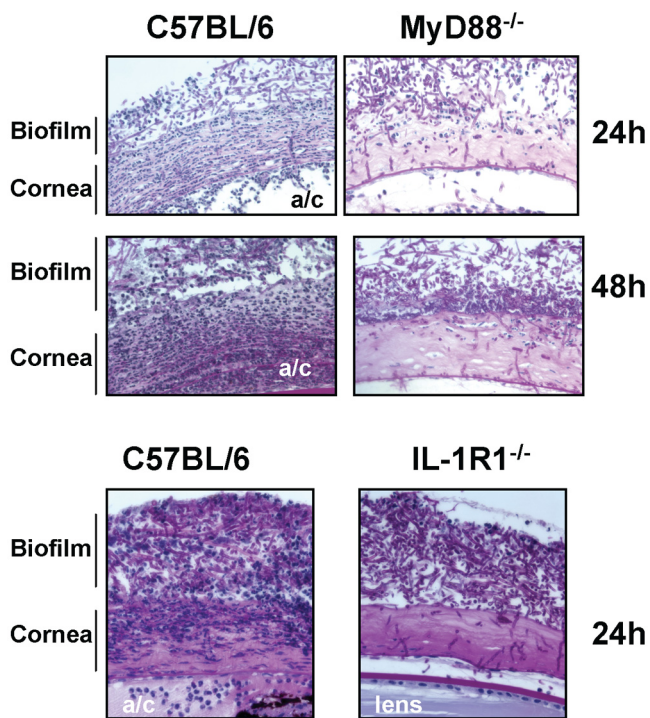


FIGURE 4. Histopathology of *Fusarium* keratitis in MyD88^{-/-} and IL-1R1^{-/-} mice. C57BL/6, MyD88^{-/-}, and IL-1R1^{-/-} mice were given a 1-mm diameter corneal abrasion and a contact lens with adherent *Fusarium* biofilm was placed on the corneal surface, as described in the legend to Figure 1. After 24 or 48 hours, the eyes were processed for histology and stained with PAS. Representative images of five mice per group are shown. Note that cellular infiltration of the corneal stroma was impaired in the MyD88^{-/-} and IL-1R1^{-/-} mice compared with that in the C57BL/6 mice. a/c, anterior chamber.

and homogenized, and CXCL1 production was measured by ELISA.

As shown in Figure 5, CXCL1 levels were significantly higher in biofilm-coated corneas than in the trauma control in which the corneas were similarly abraded and exposed to contact lenses with no biofilm. In contrast to the infected C57BL/6 mice, CXCL1 production in MyD88^{-/-} mice exposed to *Fusarium* biofilm was significantly reduced, indicating that this adaptor molecule is essential for production of CXCL1.

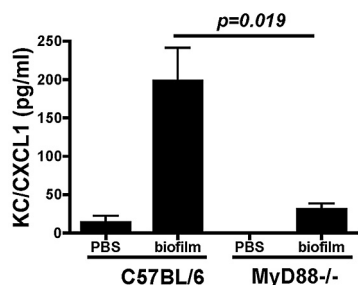


FIGURE 5. CXCL1/KC production in MyD88^{-/-} mice after infection with *Fusarium* biofilm on contact lenses. The corneas of the C57BL/6 and MyD88^{-/-} mice were abraded with three parallel scratches and exposed to lenses with adherent *Fusarium* biofilm. After 3 hours, the corneas were dissected and homogenized, and CXCL1/KC was measured by ELISA. Data are expressed as the mean ± SEM of five mice per group and are representative of results in two experiments.

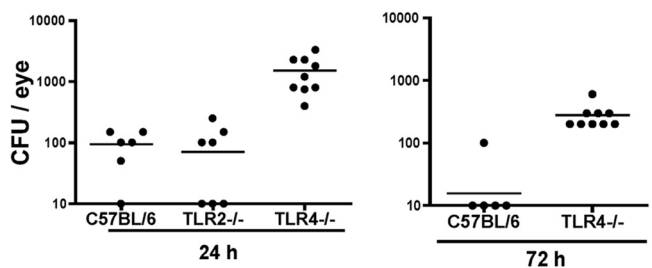


FIGURE 6. *Fusarium* keratitis in TLR2^{-/-} and TLR4^{-/-} mice. Corneas of C57BL/6, TLR2^{-/-}, and TLR4^{-/-} mice were abraded with three parallel scratches and exposed to contact lenses with *Fusarium* biofilm, as described in the legend to Figure 2. At 24 and 72 hours, the eyes were homogenized and CFUs were assessed. Data points represent individual corneas in two separate experiments. $P < 0.001$; ANOVA at 24 hours between C57BL/6 and TLR4^{-/-} mice and between the TLR2^{-/-} and TLR4^{-/-} mice and 72-hour data between the C57BL/6 and TLR4^{-/-} mice.

TLR4-Dependent Fungal Killing in Contact Lens-Associated *Fusarium* Keratitis

In addition to IL-1R1, MyD88 is recruited to the TIR domain of all Toll-like receptors except TLR3.²⁰ Given that TLR2 and TLR4 mediate the host response to pathogenic fungi in other models of infection,^{25,26} we next examined their role in *Fusarium* keratitis. Corneas of C57BL/6, TLR2^{-/-}, and TLR4^{-/-} mice were abraded by three parallel scratches as before, and a silicone hydrogel lens punch with adherent *Fusarium* biofilm was placed on the ocular surface. After 24 hours, the eyes were homogenized and the number of CFUs was determined. As shown in Figure 6, the mean CFUs in TLR4^{-/-} mice was >1 log higher than in the C57BL/6 and TLR2^{-/-} mice at 24 and 72 hours. There were no significant differences in corneal opacity or cellular infiltration between the TLR4^{-/-} and C57BL/6 mice (data not shown), indicating that TLR4 regulates fungal killing but not cell recruitment to the cornea.

DISCUSSION

Biofilm formation allows bacteria and fungi to reside within an environmental matrix that is relatively resistant to antimicrobial agents.^{27,28} Organisms can also form biofilm on abiotic surfaces such as catheters, contact lenses, and intraocular lenses.²⁷ For example, *Candida albicans* forms biofilm on catheters that is dependent on downregulation of alcohol dehydrogenase^{28,29}; however, the biochemical basis for *Fusarium* biofilm formation has yet to be determined. We reported in a prior study that the morphology of *Fusarium* biofilm differs according to the chemistry and water content of silicone hydrogel contact lenses and noted that *Fusarium* forms a dense, tightly adherent biofilm on lotrafilcon A lenses.¹⁶

In the current study, we demonstrated that incubation of lotrafilcon A lenses containing *Fusarium* biofilm with the abraded cornea resulted in the development of severe keratitis in immunocompetent C57BL/6 mice, with corneal opacification evident within 24 hours and remaining high for more than 72 hours. Histologic examination showed the biofilm on the abraded corneal epithelium, with hyphae present at the corneal surface, in the corneal stroma, and in the anterior chamber, having penetrated Descemet’s membrane. Our findings also showed an intense neutrophil infiltrate in each of these sites, apparently from limbal and iris vessels. The tissue damage is most likely a result of secretion of proteolytic enzymes by *Fusarium* and by neutrophils. Neutrophils can also kill *Fusarium* and other filamentous fungi by binding to the hyphae and

TABLE 1. Trauma versus Contact Lens–Associated *Fusarium* Keratitis

	Trauma	Contact Lenses
Invasive stage	Conidia	Hyphae
Site of initial infection	Corneal stroma	Corneal epithelium
Primary responding (bone marrow derived) resident cells	Macrophages and dendritic cells in corneal stroma	Langerhans cells in corneal epithelium
Secondary responding cells	Keratocytes/fibroblasts	Epithelial cells
Infiltrating cells	Neutrophils, macrophages	Neutrophils, macrophages
Innate immune response	IL-1R1/MyD88	IL-1R1/MyD88
Role for TLRs	TLR4-dependent killing	TLR4-dependent killing

secreting reactive oxygen species such as superoxide and hydrogen peroxide.³¹ In addition to neutrophils, a recent study showed a role for macrophages in *Fusarium* keratitis,³² and we found a role for macrophages in *Aspergillus* keratitis (Pearlman E, unpublished results, 2009).

Given that the incidence of infection is low despite the widespread presence of *Fusarium* in the environment, susceptibility is most likely related to trauma to the corneal surface that is sufficient to allow penetration of fungal hyphae on the contact lenses. Infection is also associated with poor lens care habits that can lead to development of biofilm.^{12,13}

Earlier reports of experimental fungal keratitis showed an important role of the host response in regulating disease, as immunosuppressed animals showed impaired cellular infiltration of the cornea and impaired fungal killing.^{33–36} Our current findings using cyclophosphamide-immunosuppressed mice infected with *Fusarium* grown as biofilm on contact lenses are consistent with those reports, as the cyclophosphamide-treated mice had significantly impaired capability of killing the fungus.³⁶ We extended these studies by identifying specific mediators of the host cell response. We found that the IL-1R1^{-/-} and MyD88^{-/-} mice had a phenotype similar to that of the cyclophosphamide-treated mice, with uncontrolled fungal growth, leading to corneal perforation. MyD88 is an adaptor molecule that is recruited early in the signaling pathway of IL-1R1 and which serves as a platform for recruitment of IRAK, IRAK4, and TRAF6. Phosphorylation of these kinases leads to NFκB formation and translocation into the nucleus and production of neutrophil chemotactic cytokines such as CXCL1.^{37,38} MyD88 is also essential for TLR2 and TLR4 signaling, and although TLR2 and TLR4 have no apparent role in the development of corneal opacification, TLR4^{-/-} mice have an impaired ability to clear the infection, implicating this receptor in fungal killing as. We reported similar results in a model of trauma-induced *Fusarium* keratitis in which conidia are injected directly into the corneal stroma.¹⁷ In that study, the TLR4^{-/-} and TLR2/4^{-/-} mice had impaired fungal clearance, although the organisms were eventually cleared. Taken together with current findings, we suggest that TLR4 expression on neutrophils is important in recognition and killing of fungal hyphae.²⁷ These independent observations demonstrate that despite differences in fungal biofilm and resident corneal cell type that recognize conidia and hyphae (Table 1), there are common mediators that regulate the host response to fungal pathogens. Similar results were detected in a model of *Aspergillus* keratitis (Pearlman E, unpublished observations, 2009).

As noted earlier, epidemiologic evidence indicates that contact lens wear is a major risk factor for *Fusarium* keratitis in industrialized countries, whereas agriculture-related trauma is the primary risk factor for *Fusarium* and *Aspergillus* keratitis in the southern United States and in developing countries. Table 1 shows a comparison of contact lens–associated with trauma or agriculture–associated clinical manifestations based on the most likely life cycle stage that initiates infection and a comparison of the host

responses as examined in our current and recent studies in murine models of *Fusarium* keratitis.¹⁷ First, in *Fusarium* keratitis caused by biofilm on contact lenses, hyphae are in direct contact with the ocular surface and are therefore likely to be the invading life cycle stage. In contrast, trauma- and agriculture-associated disease is most likely due to penetration of conidia into the corneal stroma after injury. Conidia then germinate in the stroma and develop into hyphae, which actively penetrate the corneal stroma and anterior chamber. Although it is difficult to measure directly, there also appeared to be a greater fungal mass in the biofilm model than the trauma model in which 10,000 conidia are injected. Differences in host cell recognition of hyphae compared with swollen conidia may involve expression of fungal cell wall components such as β-glucan, which depends on the lifecycle stage of *Aspergillus*^{26,39} and likely also of *Fusarium*. Expression of dectin 1, which is the receptor for β-glucan, may also determine the outcome of disease. Future studies will focus on the role of pathogen-recognition molecules such as C-type lectins, which regulate pulmonary infections caused by *Candida* and *Aspergillus* species.^{40–43}

Second, the host response will depend on which resident cells in the cornea recognize invading fungal pathogens at any stage. For example, the primary cells that respond to *Fusarium* hyphae on contact lenses are likely to be the resident population of Langerhans-like cells in the corneal epithelium, and a secondary responding cell population is likely to be the epithelial cells. In contrast, germinating conidia in the stroma are likely to activate resident stromal macrophages and dendritic cells as first-responder cells, with stromal fibroblasts, derived from activated keratocytes as the secondary responders. The role of resident bone marrow-derived cells may therefore determine the outcome of fungal infection, as we recently demonstrated in chimeric mice and *fas*-expressing macrophages and dendritic cells that resident bone marrow-derived cells are essential for LPS/TLR4-induced corneal inflammation.⁴⁴

Third, in the present study, as in trauma-induced keratitis, IL-1R1/MyD88 signaling regulated chemokine production and neutrophil recruitment in biofilm-induced keratitis (Table 1), whereas TLR4, but not TLR2, regulated fungal killing.¹⁷ Independent observations from both models strengthen the notion that the IL-1R1/MyD88 and the TLR4/MyD88 pathways are important in *Fusarium* keratitis.

Although we used a single clinical isolate of *Fusarium oxysporum*, human traumatic- and contact lens-associated *Fusarium* keratitis is also caused by *F. solani*. In future studies, we will examine other clinical isolates to determine whether there are differences in the host response.

Acknowledgments

The authors thank Catherine Dollar and Scott Howell for assistance and expertise in histology and imaging, respectively, and Ahmed Tarabishy and Sixto Leal for many helpful discussions.

References

- Bharathi MJ, Ramakrishnan R, Meenakshi R, Padmavathy S, Shivakumar C, Srinivasan M. Microbial keratitis in South India: influence of risk factors, climate, and geographical variation. *Ophthalmic Epidemiol.* 2007;14:61-69.
- Chowdhary A, Singh K. Spectrum of fungal keratitis in North India. *Cornea.* 2005;24:8-15.
- Xie L, Zhong W, Shi W, Sun S. Spectrum of fungal keratitis in north China. *Ophthalmology.* 2006;113:1943-1948.
- Alfonso EC, Cantu-Dibildox J, Munir WM, et al. Insurgence of Fusarium keratitis associated with contact lens wear. *Arch Ophthalmol.* 2006;124:941-947.
- Alfonso EC, Miller D, Cantu-Dibildox J, O'Brien TP, Schein OD. Fungal keratitis associated with non-therapeutic soft contact lenses. *Am J Ophthalmol.* 2006;142:154-155.
- Khor WB, Aung T, Saw SM, et al. An outbreak of Fusarium keratitis associated with contact lens wear in Singapore. *JAMA.* 2006;295:2867-2873.
- Saw SM, Ooi PL, Tan DT, et al. Risk factors for contact lens-related fusarium keratitis: a case-control study in Singapore. *Arch Ophthalmol.* 2007;125:611-617.
- Gaujoux T, Chatel MA, Chaumeil C, Laroche L, Borderie VM. Outbreak of contact lens-related Fusarium keratitis in France. *Cornea.* 2008;27:1018-1021.
- Ma SK, So K, Chung PH, Tsang HF, Chuang SK. A multi-country outbreak of fungal keratitis associated with a brand of contact lens solution: the Hong Kong experience. *Int J Infect Dis.* 2009;13:443-448.
- Chang DC, Grant GB, O'Donnell K, et al. Multistate outbreak of Fusarium keratitis associated with use of a contact lens solution. *JAMA.* 2006;296:953-963.
- Grant GB, Fridkin S, Chang DC, Park BJ. Postrecall surveillance following a multistate fusarium keratitis outbreak: 2004 through 2006. *JAMA.* 2007;298:2867-2868.
- Ahearn DG, Simmons RB, Zhang S, et al. Attachment to and penetration of conventional and silicone hydrogel contact lenses by *Fusarium solani* and *Ulocladium* sp. in vitro. *Cornea.* 2007;26:831-839.
- Ahearn DG, Zhang S, Stulting RD, et al. Fusarium keratitis and contact lens wear: facts and speculations. *Med Mycol.* 2008;46:397-410.
- Dyavaiah M, Ramani R, Chu DS, et al. Molecular characterization, biofilm analysis and experimental biofouling study of *Fusarium* isolates from recent cases of fungal keratitis in New York State. *BMC Ophthalmol.* 2007;7:1.
- Zhang S, Ahearn DG, Stulting RD, et al. Differences among strains of the *Fusarium oxysporum*-*F. solani* complexes in their penetration of hydrogel contact lenses and subsequent susceptibility to multipurpose contact lens disinfection solutions. *Cornea.* 2007;26:1249-1254.
- Imamura Y, Chandra J, Mukherjee PK, et al. *Fusarium* and *Candida albicans* biofilms on soft contact lenses: model development, influence of lens type, and susceptibility to lens care solutions. *Antimicrob Agents Chemother.* 2008;52:171-182.
- Tarabishy AB, Aldabagh B, Sun Y, et al. MyD88 regulation of *Fusarium* keratitis is dependent on TLR4 and IL-1R1 but not TLR2. *J Immunol.* 2008;181:593-600.
- Johnson AC, Heinzel FP, Diaconu E, et al. Activation of toll-like receptor (TLR)2, TLR4, and TLR9 in the mammalian cornea induces MyD88-dependent corneal inflammation. *Invest Ophthalmol Vis Sci.* 2005;46:589-595.
- Khatri S, Lass JH, Heinzel FP, et al. Regulation of endotoxin-induced keratitis by PECAM-1, MIP-2, and toll-like receptor 4. *Invest Ophthalmol Vis Sci.* 2002;43:2278-2284.
- O'Neill LA, Bowie AG. The family of five: TIR-domain-containing adaptors in Toll-like receptor signalling. *Nat Rev Immunol.* 2007;7:353-364.
- Hall LR, Diaconu E, Patel R, Pearlman E. CXC chemokine receptor 2 but not C-C chemokine receptor 1 expression is essential for neutrophil recruitment to the cornea in helminth-mediated keratitis (river blindness). *J Immunol.* 2001;166:4035-4041.
- Lin M, Carlson E, Diaconu E, Pearlman E. CXCL1/KC and CXCL5/LIX are produced selectively by corneal fibroblasts and mediate neutrophil infiltration to the corneal stroma in LPS keratitis. *J Leukoc Biol.* 2006.
- Khan S, Cole N, Hume EB, et al. The role of CXC chemokine receptor 2 in *Pseudomonas aeruginosa* corneal infection. *J Leukoc Biol.* 2007;81:315-318.
- Lin M, Jackson P, Tester AM, et al. Matrix metalloproteinase-8 facilitates neutrophil migration through the corneal stromal matrix by collagen degradation and production of the chemotactic peptide Pro-Gly-Pro. *Am J Pathol.* 2008;173:144-153.
- Netea MG, Brown GD, Kullberg BJ, Gow NA. An integrated model of the recognition of *Candida albicans* by the innate immune system. *Nat Rev Microbiol.* 2008;6:67-78.
- Netea MG, Gow NA, Munro CA, et al. Immune sensing of *Candida albicans* requires cooperative recognition of mannans and glucans by lectin and Toll-like receptors. *J Clin Invest.* 2006;116:1642-1650.
- Behlau I, Gilmore MS. Microbial biofilms in ophthalmology and infectious disease. *Arch Ophthalmol.* 2008;126:1572-1581.
- Mukherjee PK, Mohamed S, Chandra J, et al. Alcohol dehydrogenase restricts the ability of the pathogen *Candida albicans* to form a biofilm on catheter surfaces through an ethanol-based mechanism. *Infect Immun.* 2006;74:3804-3816.
- Mukherjee PK, Zhou G, Munyon R, Ghannoum MA. *Candida* biofilm: a well-designed protected environment. *Med Mycol.* 2005;43:191-208.
- Norred WP, Bacon CW, Plattner RD, Vesonder RF. Differential cytotoxicity and mycotoxin content among isolates of *Fusarium moniliforme*. *Mycopathologia.* 1991;115:37-43.
- Hu J, Wang Y, Xie L. Potential role of macrophages in experimental keratomycosis. *Invest Ophthalmol Vis Sci.* 2009;50:2087-2094.
- Nathan C. Neutrophils and immunity: challenges and opportunities. *Nat Rev.* 2006;6:173-182.
- Kiryu H, Yoshida S, Suenaga Y, Asahi M. Invasion and survival of *Fusarium solani* in the dexamethasone-treated cornea of rabbits. *J Med Vet Mycol.* 1991;29:395-406.
- O'Day DM, Ray WA, Head WS, Robinson RD, Williams TE. Influence of corticosteroid on experimentally induced keratomycosis. *Arch Ophthalmol.* 1991;109:1601-1604.
- Forster RK, Rebell G. Animal model of *Fusarium solani* keratitis. *Am J Ophthalmol.* 1975;79:510-515.
- Wu TG, Keasler VV, Mitchell BM, Wilhelmus KR. Immunosuppression affects the severity of experimental *Fusarium solani* keratitis. *J Infect Dis.* 2004;190:192-198.
- Takeda K, Akira S. TLR signaling pathways. *Semin Immunol.* 2004;16:3-9.
- Kawai T, Akira S. TLR signaling. *Semin Immunol.* 2007;19:24-32.
- Gersuk GM, Underhill DM, Zhu L, Marr KA. Dectin-1 and TLRs permit macrophages to distinguish between different *Aspergillus fumigatus* cellular states. *J Immunol.* 2006;176:3717-3724.
- Bellocchio S, Moretti S, Perruccio K, et al. TLRs govern neutrophil activity in aspergillosis. *J Immunol.* 2004;173:7406-7415.
- Netea MG, Van der Graaf C, Van der Meer JW, Kullberg BJ. Recognition of fungal pathogens by Toll-like receptors. *Eur J Clin Microbiol Infect Dis.* 2004;23:672-676.
- Luther K, Torosantucci A, Brakhage AA, Heesemann J, Ebel F. Phagocytosis of *Aspergillus fumigatus* conidia by murine macrophages involves recognition by the dectin-1 beta-glucan receptor and Toll-like receptor 2. *Cell Microbiol.* 2007;9:368-381.
- van der Graaf CA, Netea MG, Verschueren I, van der Meer JW, Kullberg BJ. Differential cytokine production and Toll-like receptor signaling pathways by *Candida albicans* blastoconidia and hyphae. *Infect Immun.* 2005;73:7458-7464.
- Chinnery HR, Carlson EC, Sun Y, et al. Bone marrow chimeras and c-fms conditional ablation (Mafia) mice reveal an essential role for resident myeloid cells in lipopolysaccharide/TLR4-induced corneal inflammation. *J Immunol.* 2009;182:2738-2744.