

Outbreak of *Salmonella* Braenderup infections associated with Roma tomatoes, northeastern United States, 2004: a useful method for subtyping exposures in field investigations

S. K. GUPTA^{1,2*}, K. NALLUSWAMI³, C. SNIDER^{1,4}, M. PERCH¹,
M. BALASEGARAM⁵, D. BURMEISTER⁵, J. LOCKETT¹, C. SANDT³,
R. M. HOEKSTRA¹ AND S. MONTGOMERY¹

¹ Foodborne and Diarrheal Diseases Branch, Centers for Disease Control and Prevention, Atlanta, GA, USA

² Epidemic Intelligence Service, Office of Workforce and Career Development, Centers for Disease Control and Prevention, Atlanta, GA, USA

³ Pennsylvania Department of Health, Harrisburg, PA, USA

⁴ Association of Schools of Public Health, Atlanta, GA, USA

⁵ Centers for Disease Control and Prevention, Atlanta, GA, USA

(Accepted 27 November 2006; first published online 5 February 2007)

SUMMARY

Salmonella Braenderup is an uncommon serotype in the United States. In July 2004, a multistate outbreak of *Salmonella* Braenderup diarrhoeal infections occurred, with 125 clinical isolates identified. To investigate, we conducted a case-control study, enrolling 32 cases and 63 matched controls. Cheese, lettuce and tomato eaten at restaurants all appeared to be associated with illness. To further define specific exposures, we conducted a second study and asked managers of restaurants patronized by patients and controls about cheese, lettuce and tomato varieties used in dishes their patrons reported consuming. This information was obtained for 27 cases and 29 controls. Roma tomatoes were the only exposure significantly associated with illness (odds ratio 4·3, 95% confidence interval 1·2–15·9). Roma tomatoes from two restaurants were traced back to a single tomato packing house. The methods used in this field investigation to define specific exposures may be useful for other foodborne outbreaks.

INTRODUCTION

Salmonellae cause an estimated 1·4 million human cases of gastroenteritis and 600 deaths annually in the United States [1]. Of the more than 33 000 clinical isolates of *Salmonella* reported in 2003, 530 (1·6%) were serotype Braenderup [2]. *S.* Braenderup outbreaks previously have been associated with chicken, eggs and jelly used in meat pies [3]. On 16 July 2004, the Centers for Disease Control and Prevention

(CDC) was notified by the Pennsylvania Department of Health (PADOH) of 23 cases of *Salmonella* serotype Braenderup with onsets of illness over a 1-month period, an increase from the baseline of 1–3 cases per month. Of these, 14 were subtyped and demonstrated indistinguishable pulsed-field gel electrophoresis (PFGE) patterns. At the same time, via PulseNet, the National Molecular Subtyping Network for Foodborne Disease Surveillance, Pennsylvania state health officials received reports of five isolates from Massachusetts and three isolates from Kansas with indistinguishable PFGE patterns. In order to determine the source of this outbreak, an epidemiological investigation was carried out by the CDC in collaboration with state and local health authorities.

* Author for correspondence: S. K. Gupta, M.D., M.P.H., Epidemic Intelligence Service Officer, Foodborne and Diarrheal Diseases Branch, Centers for Disease Control and Prevention, 1600 Clifton Road, NE, MS A-38, Atlanta, GA 30333, USA. (Email: scg7@cdc.gov).

METHODS

Case finding, laboratory investigation and hypothesis generation

The database of PulseNet was reviewed to identify isolates with indistinguishable PFGE patterns. All state public health laboratories participating in PulseNet perform *Salmonella* serotyping and molecular subtyping on clinical isolates, and all were asked to notify the PADOH of case isolates indistinguishable by PFGE from the outbreak strain. A confirmed case was defined as an infection with *S. Braenderup*, indistinguishable from the outbreak PFGE pattern by one DNA restriction enzyme, *Xba*I, in a person residing in the United States with illness onset or specimen collection date between 15 June and 31 August 2004. A probable case was defined as diarrhoeal illness with onset between 15 June and 31 August 2004, in a patient who consumed a meal with a confirmed case-patient during the incubation period. No relevant food or environmental samples were available for testing.

Pennsylvania district and local health officials collected demographic information and food histories from a sample of cases using an open-ended food history questionnaire for the week preceding illness. Additional food history information from cases in Massachusetts and Kansas was also used to generate outbreak source hypotheses.

Case-control study, Phase I

A case-control study was performed by the CDC in collaboration with state health departments to test the hypotheses. Study cases were defined as culture-confirmed *S. Braenderup* infections with a date of illness onset between 15 June 2004 and the end of the study period, 10 August 2004. As no two patients were members of the same family, we did not attempt to exclude secondary cases. Controls were persons who did not report having a diarrhoeal illness between 15 June and the date of interview. Both cases and controls were restricted to being between the ages of 15 and 60 years in order to have a study population with similar food consumption habits. Controls were enrolled between 09:00 and 21:00 hours local time 7 days a week, from 23 July to 10 August.

Because this outbreak involved cases dispersed over many states without an evident link to a single restaurant or supermarket chain, anyone from the involved states may have had a similar risk of illness to

that of cases. However, in order to define areas from which controls could be conveniently selected, controls were enrolled using cases' area codes and prefixes through sequential digit dialling. Controls were matched to the cases on this basis, with a goal of enrolling two matched controls for each case. If the person answering the telephone was an adult resident of the household, this person was interviewed; otherwise, we asked to speak to any available adult household resident.

The case questionnaire included questions about consumption of meats, dairy, fruits, vegetables, spices and condiments prepared outside and inside the home in the 5 days before illness onset. We asked about food items related to our hypotheses, as well as food items implicated in previous *Salmonella* outbreaks. Controls were asked the same questions about the same 5-day period as their matched case. Specific meal and restaurant location information was obtained for both cases and controls.

Analysis was performed using SAS 9.1 (SAS Institute, Cary, NC, USA). χ^2 and Cochran-Mantel-Haenszel testing was used for univariate analysis of food exposures. Conditional logistic regression was used for multivariate analysis of food exposures and analysis of frequency of eating at a restaurant. A two-tailed *P* value of <0.05 was considered significant.

Case-control study, Phase II

The first phase of the case-control study did not implicate a unique food item, but instead narrowed our hypothesis to three specific food items eaten at restaurants. To further investigate these food items, we performed a second case-control study. We included unmatched case-patients and controls who had been interviewed during the study period, but did not fall into matched groups, in order to have sufficient participants in the study. As matching had been done for ease of finding controls and not to control variability, we ignored the match. The matched groups were considered to be exchangeable given that most food exposure information collected more than a few days after an event generally reflects food preferences, and that controls, regardless of location, should have had similar risks of exposure.

We attempted to telephone managers of all restaurants patronized to ask them about the use of specific kinds of lettuce, tomatoes and cheese in the specific menu items consumed by case-patients and

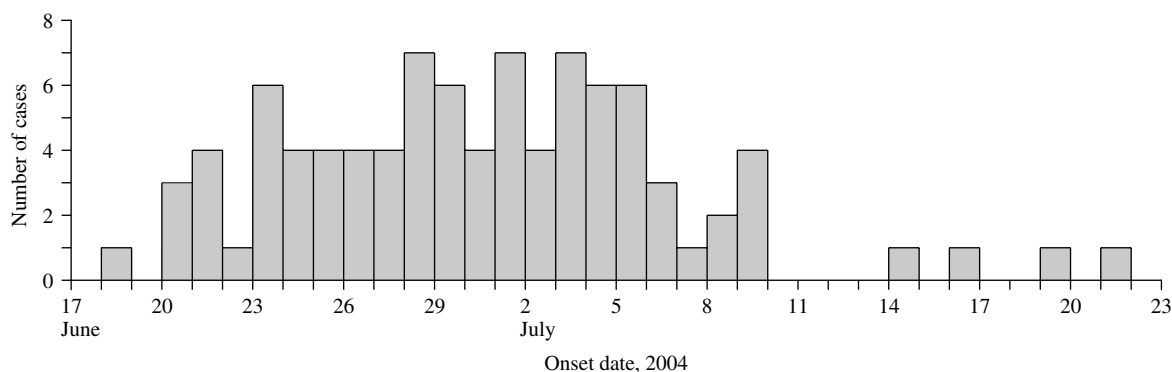


Fig. 1. *S. Braenderup* infections with *XbaI* outbreak pattern JBPX01.0093 by illness onset date ($n=92$).

controls on the days of their patronage. We included only case-patients and controls who had reported eating at a restaurant, and for whom we could obtain menu item information for all restaurant visits.

Traceback and environmental investigation

The U.S. Food and Drug Administration (FDA) conducted a traceback investigation in collaboration with state food regulatory agencies and health departments. FDA Center for Food Safety and Applied Nutrition (CFSAN), in conjunction with state and local food regulatory agencies, performed an environmental investigation of a packing facility.

RESULTS

Case finding, laboratory investigation and hypothesis generation

We identified 125 confirmed cases from 16 states (Pennsylvania 40, Massachusetts 22, Virginia 11, New Jersey 10, Ohio 9, Maryland 7, Connecticut 5, Kansas 5, Delaware 3, Iowa 3, New York 3, Missouri 2, Wisconsin 2, Georgia 1, New Hampshire 1, West Virginia 1) and 12 probable cases. The outbreak was centered in the northeastern United States, which had 90% of the cases. Illness onset ranged from 18 June to 21 July (Fig. 1). The median age of patients was 30 years (range 3 months to 88 years); 67% of patients were female (Fig. 2). There were no deaths reported.

A review of the PulseNet database found that the *XbaI*. *S. Braenderup* PFGE outbreak pattern (JBPX01.0093) had not been previously recorded among a total of 868 *S. Braenderup* isolates which demonstrated 98 unique *XbaI* patterns. Isolates were susceptible to a standard panel of antibiotics.

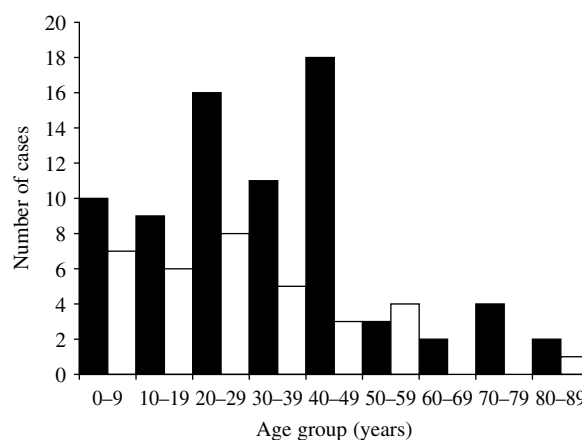


Fig. 2. Age and gender distribution of confirmed outbreak cases ($n=110$). Only confirmed cases for which gender and age information were available are included. ■, Female; □, male.

In Pennsylvania, three patients had eaten at one single outlet of a Mexican restaurant chain between 17 and 30 June. Three other patients had consumed food from one Italian restaurant on 28 and 29 June. In Kansas, three patients had eaten at an Italian restaurant on 25 June. A review of menu items consumed by these groups did not suggest an outbreak vehicle.

Massachusetts state health officials reported 22 confirmed and 11 probable cases. The probable cases, along with one confirmed case, constituted a group associated with a common meal catered by an Italian restaurant on 21 June. The only dish in common for these 12 persons was a chicken caesar salad, containing chicken, mushrooms, mesclun and Roma tomatoes. Separately, a pair of individuals, one of whom was a confirmed case from Massachusetts, reported eating the same meal together at a restaurant, with the exception that the well member of the pair did not eat the Roma tomatoes.

Table 1. Analysis of food items consumed by >40% of cases

Food item eaten at a restaurant	Participants from all states				mOR*	95% CI	P value
	Cases (n=32)		Controls (n=63)				
	No.	%	No.	%			
Cheese	23/32	72	32/60	53	2.2	0.9–5.4	0.07
Lettuce	20/31	65	33/61	54	1.4	0.7–3.0	0.33
Tomatoes	19/31	61	27/59	46	1.8	0.8–4.1	0.15
Beef	17/32	53	24/62	39	1.7	0.7–3.8	0.23
Onion	14/31	45	24/59	41	1.1	0.5–2.7	0.82
Chicken	13/31	42	27/59	46	1.3	0.6–2.8	0.57
	Participants from Pennsylvania only						
	Cases (n=20)		Controls (n=40)				
	No.	%	No.	%	mOR*	95% CI	P value
Cheese	14/20	70	18/38	47	2.5	0.8–7.5	0.09
Lettuce	14/19	74	17/39	44	2.7	1.0–7.7	0.04
Tomatoes	13/19	68	15/38	39	3.0	1.0–9.3	0.03
Beef	10/20	50	11/39	28	2.1	0.8–6.1	0.13
Onion	9/19	47	13/36	36	1.5	0.5–4.5	0.51
Chicken	9/19	47	13/39	33	1.7	0.6–4.8	0.32

mOR, Matched odds ratio; CI, confidence interval.

* mOR and two-tailed *P* values calculated using the Cochran–Mantel–Haenszel method.

Based on population-based data, produce items are more commonly consumed by women than men [4]. Because there was a predominance of women and because of the foods reportedly consumed by some cases, we hypothesized that a produce item commonly found at Italian and Mexican restaurants might be the outbreak vehicle.

Case-control study, Phase I

We enrolled a total of 32 (26%) of the 125 case-patients. These patients were from Pennsylvania (20), Connecticut (4), Virginia (4), Kansas (2), Ohio (1) and West Virginia (1). Sixty-three matched controls from Pennsylvania (40), Connecticut (8), Virginia (8), Kansas (4), Ohio (1), and West Virginia (2) participated in the case-control study. Reasons for not enrolling patients included identification of cases after the study period, choice by state health departments not to participate in the study, inability to contact patient or find matched controls during the study period, and failure to meet the study case definition. The median age of study patients was 31.5 years, compared to 45 years for controls. Seventy-six per

cent of study patients were female, compared to 71% of controls.

All patients reported diarrhoea, with 14 (44%) reporting bloody diarrhoea. Other symptoms included abdominal cramps (91%), fever (86%) and vomiting (50%). As part of their clinical care, 21 (66%) patients received antimicrobial therapy for their illness, and eight (25%) were hospitalized.

Patients ate at a restaurant more frequently than did their matched controls ($P=0.04$), and the remainder of the analysis was limited to food items eaten at restaurants. The restaurant items most commonly consumed by patients included cheese (72%), lettuce (65%), tomatoes (61%), beef (53%), onion (45%) and chicken (42%). On matched univariate analysis, no items were significantly associated with illness (Table 1). Exposures were grouped by type of restaurant food (meats, dairy, vegetables, produce or spices or condiments); none were associated with illness.

The 20 patients and 40 matched controls from Pennsylvania were then analysed separately, as this appeared to be a more homogenous subset in regards to both data collection and exposures. The odds of

Table 2. Analysis of food items consumed by >40% of cases, Phase II of case-control study

Reported ingredient	Cases (n=27)		Controls (n=29)		Crude* OR	95% CI	P value
	No.	%	No.	%			
Iceberg lettuce	18/27	67	14/29	48	2.1	0.7-6.3	0.16
Red round tomatoes	12/27	44	12/29	41	1.1	0.4-3.3	0.82
Roma tomatoes	11/27	41	4/29	14	4.3	1.2-15.9	0.02

OR, Odds ratio; CI, confidence interval.

* Unmatched odds ratios and two-tailed *P* values calculated using the χ^2 test.

becoming ill were greater for eating lettuce [matched odds ratio (mOR) 2.7, 95% confidence interval (CI) 1.0-7.7, *P*=0.04], tomato (mOR 3.0, 95% CI 1.0-9.3, *P*=0.03) and cheese (mOR 2.5, 95% CI 0.8-7.5, *P*=0.09), although for cheese, this association was not statistically significant (Table 1). All three of these food items were consumed by $\geq 68\%$ of patients. In multivariate analysis, with the inclusion of each of these three food items individually, neither of the two remaining food items were associated with illness.

Case-control study, Phase II

Although the findings of Phase I of the case-control study did not implicate a single food item, they did provide a narrower hypothesis: lettuce, cheese or tomatoes eaten at a restaurant could be the outbreak vehicle. All of these food items were consistent with the original hypothesis, and were commonly consumed foods available in a wide variety, which would be difficult to distinguish by patrons.

In the second phase of the case-control study, information on meal ingredients was obtained from telephone surveys of restaurant managers, for 27 cases and 29 controls, totaling 84 meals at 79 restaurants. The median age of study patients was 31 years, compared to 45 years for controls; 71% of patients were female compared to 66% of controls.

Cheese was eliminated as a potential source of this outbreak. Eleven different varieties of cheese were consumed by patients and no specific cheese type was consumed by more than 28% of patients. None of the cheeses were reported to be made with unpasteurized milk.

Iceberg lettuce was consumed by 67% of patients, while romaine lettuce was consumed by only 18% of patients. Red round tomatoes and Roma tomatoes were consumed by 44% and 41% of patients respectively (Table 2). All of the 31 meals with tomatoes,

except for one with red round tomatoes, were uncooked. Roma tomatoes were the only food item significantly associated with illness (crude OR 4.3, 95% CI 1.2-15.9, *P*=0.02).

A matched analysis using 19 cases and the 23 matched controls was performed to assess the validity of ignoring the match. The results were consistent; no items were significantly associated with illness, but Roma tomatoes had the highest odds ratio (mOR 3.0, 95% CI 0.6-16.3, *P*=0.20). As an additional validation measure, the converse was done for Phase I. An unmatched analysis of Phase I Pennsylvania data, including 21 cases and 47 controls, revealed results consistent with those of the matched analysis presented, indicating that tomatoes (crude OR 2.9, 95% CI 0.9-8.8, *P*=0.06), cheese (crude OR 2.4, 95% CI 0.8-7.2, *P*=0.12) and lettuce (crude OR 3.0, 95% CI 0.9-9.6, *P*=0.06) appeared to be associated with illness. Also, after returning from the field, all analyses described above were performed using exact statistical tests, and results were again consistent.

Managers of three Pennsylvania restaurants where nine patients had consumed Roma tomatoes were contacted to learn more about their tomato handling practices. Each of these managers reported receiving whole Roma tomatoes only, storing them for a maximum of 3 days, and processing them by washing and slicing on the day of serving.

Traceback and environmental investigation

Roma tomatoes from two restaurants, each with at least two associated cases, were traced back through two distributors to a common packing house in Florida. Environmental investigation and sampling of this packing house during December 2004 did not reveal a source of contamination. The farm which was suspected to have supplied these tomatoes was not in operation during the environmental

investigation. The packing house appeared to be following food safety guidelines, including routine inline chlorination of dump tank water and monitoring the water temperature to keep it at or above that of the tomatoes.

DISCUSSION

This large multistate outbreak of *S. Braenderup* infections was associated with exposure to Roma tomatoes in restaurants. An initial questionnaire did not implicate a specific food category. However, after identifying more specific exposures in restaurants, a strong association between infections with *S. Braenderup* and consumption of Roma tomatoes outside the home was demonstrated. Given the additional information from patient cohorts and traceback investigation, Roma tomatoes were implicated as the likely source of this outbreak. Illnesses among patients who were not known to have eaten Roma tomatoes at a restaurant may be explained by poor recall, cross-contamination, secondary infections or home Roma tomato consumption. This is the first *S. Braenderup* outbreak we are aware of to have implicated a produce item as the vehicle of infection.

Efforts to increase the epidemiological 'signal-to-noise ratio' can be applied for both disease and exposure. The use of pathogen subtype testing, such as PFGE in this outbreak, has allowed more accurate identification of outbreak-related cases for certain pathogens, distinguishing them from unrelated background cases. However, an equally specific identification of exposure is a persistent challenge. In this case, evidence of suspicious exposures (cheese, lettuce and tomatoes) and information about the time, date, location and context (meal) of these exposures, combined with a reliable source of further information (restaurant managers), allowed exposure 'subtyping' sufficient to implicate a specific food item. In situations where many restaurants are involved, telephoning restaurant managers to ask a limited set of questions is a method that has the advantages of being simple, rapid, inexpensive and easily replicable.

Efforts to subtype exposure and reduce misclassification may be useful in other field investigations. When outbreaks do not occur in a single location or event, or the outbreak vehicle is an easily forgotten or an unapparent item to the consumer, it may not be possible to initially generate focused

hypotheses. More narrow hypotheses generated from an initial analytical study can be used to perform a second analytical study if sufficient contextual information is available.

Although we used this method for food items, it could be used for any type of risk factor that can be divided into epidemiologically relevant, more useful categories. For example, after an initial case-control study, investigators of *Salmonella* outbreaks in 1990 and 1993 suspected tomatoes as the source, but could not exclude lettuce [5]. Tomatoes and lettuce were then traced back to their packing house of origin, and odds ratios were calculated based on the proportions of ill and well persons who consumed tomatoes from different packing houses, implicating one specific tomato packing house.

This method of obtaining more specific exposure data through a second analytical study can be used with a matched or unmatched study design; however, it is easier to apply in an unmatched setting. In a matched design the inability to obtain additional exposure information for some individuals can result in the loss of entire strata. Ignoring the match is not ideal because of the potential introduction of bias if matched groups are not exchangeable.

Salmonella and tomatoes

Most of the estimated 1.4 million *Salmonella* infections that occur each year in the United States are caused by contaminated foods [1]. Foods of animal origin are traditionally associated with *Salmonella* outbreaks. However, fresh produce is responsible for a growing proportion of outbreaks, increasing from 0.7% of all foodborne outbreaks with a known food item in the 1970s, to 6% in the 1990s [6]. Unlike meats, eggs and dairy products, produce is often eaten raw, and preventing produce-related infections is a unique challenge. Tomatoes in particular are popular worldwide; five billion pounds of fresh market tomatoes, mostly uncooked, are consumed annually in the United States [7]. In response to the increase in produce-associated foodborne disease outbreaks, the FDA has initiated a focused strategy directed at produce production and processing practices in order to prevent produce-related outbreaks [8].

Salmonella outbreaks have been linked to tomatoes since 1990, and have since increased in frequency and magnitude. Nine tomato-associated outbreaks of *Salmonella* were reported in North America from 1990 to 2004 [5, 9–13], causing a total of 1616 illnesses

Table 3. Tomato-associated Salmonella outbreaks in North America, 1990–2004

Year	Month	Serotype	Location	Illnesses	Variety	Ref.
1990	July–August	Javiana	Multistate	176	Whole Round	[6]
1993	July	Montevideo	Multistate	100	Whole Round	[6]
1998/1999	December – January	Baildon	Multistate	86	Round	[10]
2000	November–December	Thompson	Multistate	42	Unknown	[13]
2002	June–July	Javiana	Florida	141	Pre-diced Roma	[12]
2002	September–October	Newport	Multistate	510	Whole Round	[11]
2004	July	Javiana and others	Multistate	429	Pre-sliced Roma	[5]
2004	June–July	Braenderup	Multistate	125	Whole Roma	[5]
2004	July	Javiana	Ontario, Canada	7	Roma	[5]

(Table 3). Considering that approximately 1 of every 38 cases of salmonellosis is reported to public health authorities, we estimate that tomatoes have caused approximately 61 000 outbreak-related *Salmonella* illnesses since 1990 [14]. All but two of these outbreaks were multistate, indicating contamination occurred before the tomatoes were distributed. In one single state outbreak, contamination of tomatoes was probably amplified at a processing plant that diced tomatoes before they were supplied to a large tourist resort; cases were recognized in nine states [12].

The contamination event in this outbreak must also have occurred before the tomatoes were distributed, but the actual point of contamination was not identified. Contamination could occur at several steps along the path from farm to table. Tomato seedlings have been shown to absorb some *Salmonella* serotypes from hydroponic fluids, although whether this contamination persists to the adult plant has not been demonstrated [15]. Contamination of seedlings in the greenhouse was not investigated in this outbreak. Tomato flowers inoculated experimentally with *Salmonella* produce contaminated fruit [16]; this could occur in the tomato field, from either irrigation or ground water. Contamination may also be introduced, or existing contamination could be amplified, during processing at the packing house, where thousands of pounds of tomatoes pass through a common water bath [17]. This was the suspected mechanism of contamination in several earlier outbreaks [5]. Fresh tomatoes placed in water colder than the tomatoes themselves have been shown to draw water into their interior, along with bacteria present in the water [18]. Maintaining appropriate water temperature, pH and chlorine levels in the water bath decreases but may not eliminate the risk of contamination [19]. As these procedures were reportedly

in place, water bath contamination does not readily explain this outbreak.

Inactivation of *Salmonella* on the tomato itself is extremely difficult without cooking, even if the tomato is treated with highly concentrated chlorine solution [19], and such interventions would have no effect on *Salmonella* inside the tomato. Therefore, interventions should focus on preventing tomato contamination, cross-contamination and amplification from occurring. Pre-slicing of tomatoes has been suspected to amplify pre-existing contamination [10, 12] and *Salmonella* can multiply on cut surfaces of a tomato at ambient temperature [20], but the possible contribution to outbreaks has not been established.

CONCLUSIONS

Two practical issues with this field investigation may limit our conclusions. A concurrent but separate outbreak associated with Roma tomatoes and caused by *S. Javiana* and other serotypes complicated this investigation, as it received media attention and may have caused confusion among some patients and controls [9]. Moreover, the second phase of the case-control study was performed on a subset of patients and controls, and the process of repeated hypothesis generation may have inflated the importance of the *P* value. However, the epidemiological investigation in combination with information from patient cohorts and traceback investigation provided sufficient evidence for public health action in an outbreak setting.

Exposure ‘subtyping’ through an iterative approach was critical to this investigation, and may be useful in a variety of types of outbreak investigations. Public health officials should keep this method in mind when in the field designing epidemiological studies to investigate outbreaks.

With the use of molecular subtyping strategies, such as PFGE, multistate outbreaks are more readily identified; however, carrying out investigations across multiple jurisdictions leads to other challenges. The difficulty encountered in enrolling sufficient cases in this outbreak illustrates the need for a standardized approach to outbreak investigation, and as well as the need for establishing a mechanism for efficient decision-making among multiple state and local health departments.

Public health professionals should be aware of tomatoes as a possible vehicle when investigating *Salmonella* outbreaks. Current knowledge of mechanisms of tomato contamination and methods of elimination of *Salmonella* on or in fruit are inadequate to define interventions that will assure produce safety and prevent similar outbreaks. Rigorous studies of these issues should be a priority for the agricultural community, food safety agencies and public health agencies.

ACKNOWLEDGEMENTS

We gratefully acknowledge E. Kirner, V. Kistler and B. Marks of the Allentown, Pennsylvania Health Bureau; L. Brink of the Allegheny County Health Department; V. Dato, L. Meloro, W. Miller, M. Moll, K. Waller, K. Warren, A. Weltman and C. Yozviak from the Pennsylvania Department of Health; and C. Braden, M. Lynch and R. V. Tauxe from the Foodborne and Diarrheal Diseases Branch, CDC, for their invaluable support with the investigation. We are also indebted to public health, food regulatory and laboratory personnel from the affected states, our US FDA partners, and the study participants for their assistance.

DECLARATION OF INTEREST

None.

REFERENCES

1. Mead PS, *et al.* Food-related illness and death in the United States. *Emerging Infectious Diseases* 1999; **5**: 607–625.
2. CDC. *Salmonella* Surveillance: Annual Summary, 2003. Atlanta, Georgia: US Department of Health and Human Services, CDC, 2004.
3. Urfer E, *et al.* Outbreak of *Salmonella* Braenderup gastroenteritis due to contaminated meat pies: clinical and molecular epidemiology. *Clinical Microbiology and Infection* 2000; **6**: 536–542.
4. CDC. *Foodborne Diseases Active Surveillance Network (FoodNet): Population Survey Atlas of Exposures, 2002*. Atlanta: Centers for Disease Control and Prevention, 2004, p. 35.
5. Hedberg CW, *et al.* Outbreaks of salmonellosis associated with eating uncooked tomatoes: implications for public health. The Investigation Team. *Epidemiology and Infection* 1999; **122**: 385–393.
6. Sivapalasingam S, *et al.* Fresh produce: a growing cause of outbreaks of foodborne illness in the United States, 1973 through 1997. *Journal of Food Protection* 2004; **67**: 2342–2353.
7. US Department of Agriculture. Vegetables and melons outlook: Economic Research Service, USDA, 2004, 24 June 2004.
8. US Food and Drug Administration. Produce safety from food production to consumption: 2004 action plan to minimize foodborne illness associated with fresh produce consumption. (www.cfsan.fda.gov/~dms/prodpla2.html). Center for Food Safety and Nutrition, FDA, 2004.
9. CDC. Outbreaks of *Salmonella* infections associated with eating Roma tomatoes – United States and Canada, 2004. *Morbidity and Mortality Weekly Report* 2005; **54**: 325–328.
10. Cummings K, *et al.* A multistate outbreak of *Salmonella* enterica serotype Baildon associated with domestic raw tomatoes. *Emerging Infectious Diseases* 2001; **7**: 1046–1048.
11. Kretsinger K. Trip Report Epi-Aid #2003-12: Investigation of multi-state outbreak of *Salmonella* Newport infections in Pennsylvania and Virginia, September–October, 2003. Centers for Disease Control, 12 November 2003.
12. Srikantiah P. Trip Report Epi-Aid #2002-61: Outbreak of *Salmonella* Javiana infections among participants of the 2002 US Transplant Games – Orlando, Florida, June 2002. Centers for Disease Control, 9 October 2002.
13. Gupta A, Crowe C. Multi-state outbreak of *Salmonella* Thompson, November–December, 2000. Centers for Disease Control, 20 February 2001.
14. Voetsch AC, *et al.* FoodNet estimate of the burden of illness caused by nontyphoidal salmonella illnesses in the United States. *Clinical Infectious Diseases* 2004; **38** (Suppl. 3): S127–134.
15. Guo X, *et al.* Evidence of association of *Salmonellae* with tomato plants grown hydroponically in inoculated nutrient solution. *Applied and Environmental Microbiology* 2002; **68**: 3639–3643.
16. Guo X, *et al.* Survival of *Salmonellae* on and in tomato plants from the time of inoculation at flowering and early stages of fruit development through fruit ripening. *Applied and Environmental Microbiology* 2001; **67**: 4760–4764.
17. Rushing J, Angulo F, Beuchat L. Implementation of a HACCP program in a commercial fresh-market tomato packinghouse: a model for the industry.

- Dairy, Food and Environmental Sanitation* 1996; **16**: 549–553.
18. **Bartz JA, Showalter RK.** Infiltration of tomatoes by aqueous bacterial suspension. *Phytopathology* 1981; **71**: 515–518.
 19. **Zhuang RY, Beuchat LR, Angulo FJ.** Fate of *Salmonella* Montevideo on and in raw tomatoes as affected by temperature and treatment with chlorine. *Applied and Environmental Microbiology* 1995; **61**: 2127–2131.
 20. **Lin CM, Wei CI.** Transfer of *Salmonella* Montevideo onto the interior surfaces of tomatoes by cutting. *Journal of Food Protection* 1997; **60**: 858–863.