

# Plasminogen Activator Inhibitor-1 Synthesis in the Human Hepatoma Cell Line Hep G2

## Metformin Inhibits the Stimulating Effect of Insulin

F. Anfosso, N. Chomiki, M. C. Alessi, P. Vague,\* and I. Juhan-Vague

Laboratory of Hematology, \*Department of Diabetology, Centre Hospitalier Universitaire Timone, 13385 Marseille Cedex 5, France

### Abstract

High plasma plasminogen activator inhibitor-1 (PAI-1) activity is associated with insulin resistance and is correlated with hyperinsulinemia. The cellular origin of plasma PAI-1 in insulin resistance is not known. The hepatoma cell line Hep G2 has been shown to synthesize PAI-1 in response to insulin. The aim of this study was to analyze the insulin-mediated response of PAI-1 and lipid synthesis in Hep G2 cells after producing an insulin-resistant state by decreasing insulin receptor numbers. The effect of metformin, a dimethyl-substituted biguanide, known to lower plasma insulin and PAI-1 levels in vivo was concomitantly evaluated. Preincubation by an 18-h exposure of Hep G2 cells to  $10^{-7}$  M insulin aimed at reducing the number of insulin receptors, was followed by a subsequent 24-h stimulation with  $10^{-9}$  M insulin. The decrease in insulin receptors was accompanied as expected, by a reduction in [ $^{14}$ C]acetate incorporation, an index of lipid synthesis, whereas PAI-1 secretion and PAI-1 mRNA expression were enhanced. The addition of metformin did not modify the effect of insulin on insulin receptors or [ $^{14}$ C]acetate incorporation. In contrast, the drug ( $10^{-4}$  M) inhibited insulin-mediated PAI-1 synthesis. The results indicate that PAI-1 synthesis in presence of insulin is markedly increased in down-regulated cells, and that metformin inhibits this effect by acting at the cellular level. These in vitro data are relevant with those found in vivo in insulin-resistant patients. Hep G2 cells may be a suitable model to study PAI-1 regulation in response to hyperinsulinemia. (*J. Clin. Invest.* 1993; 91:2185–2193.) Key words: fibrinolysis • insulin • insulin resistance • metformin • plasminogen activator inhibitor 1

### Introduction

Plasminogen activator inhibitor-1 (PAI-1)<sup>1</sup> is the major physiological inhibitor of tissue-type plasminogen activator (t-PA) (1). Increased PAI activity is responsible for impaired fibrinolysis associated with thrombotic diseases. Elevated plasma PAI-1 concentrations have been observed in coronary artery disease

and were shown to be predictive of recurrent myocardial infarction (2).

Epidemiological studies have indicated that hyperinsulinemia in the fasting state and after an oral glucose load is associated with an increased risk of developing coronary heart disease (3–6). Hyperinsulinemia is the biological marker of insulin resistance, a multifaceted syndrome. It is characterized by a decrease in the ability of insulin to stimulate in vivo glucose utilization and is associated with hypertension, android obesity, and an abnormal lipid profile including elevated triglyceride and decreased high density lipoprotein cholesterol levels (7, 8). We have previously shown that increased plasma PAI-1 levels are linked to hyperinsulinemia and are found in insulin-resistant states (for review see reference 9). Significant correlations have been established between plasma PAI-1 levels, fasting plasma insulin, body mass index, android obesity, and hypertriglyceridemia. A direct link between PAI-1 levels and insulin resistance has been established by decreasing hyperinsulinemia in vivo. Diet, weight loss, and physical training improve the insulin-resistant state by reducing insulinemia and also lower PAI-1 levels. The oral antidiabetic drug, metformin, a dimethyl substituted biguanide, increases peripheral glucose uptake, reduces gluconeogenesis and decreases plasma insulin and triglyceride levels (10–13). In addition, metformin improves fibrinolysis in cardiovascular disease (14). We have also shown in a previous study that, in obese non diabetic women, recovery of fibrinolytic activity after Metformin treatment was mainly due to decreased PAI-1 levels (15).

Several attempts have been undertaken to explain the link between increased PAI-1 levels and the insulin-resistant state. Insulin resistance is associated with several cell defects including decreased receptor numbers, alterations in insulin receptor tyrosine kinase activity leading to impaired insulin action, and postreceptor defects (16–19). A decrease in insulin receptor numbers may be secondary to a down-regulation of the receptors owing to insulin binding and internalization and may be induced at the cell level by acute or chronic exposure of cells to a high concentration of insulin (20, 21). In vitro PAI-1 is synthesized by several cell types including endothelial cells, hepatocytes (22), and smooth muscle cells (for review see reference 23). The human hepatoma cell line Hep G2 cells have retained several properties of human hepatocytes (24) and possess functional insulin receptors which can be down-regulated in response to chronic or acute exposure to high concentrations of insulin (25), thus leading to insulin desensitization. We have previously shown that insulin increased PAI-1 synthesis by Hep G2 cells (26). The results have been confirmed in other studies using Hep G2 cells (27–29) and fresh human hepatocytes (27).

The molecular events that mediate PAI-1 synthesis in response to insulin are poorly understood. Insulin exerts several metabolic actions in Hep G2 cells including a direct effect on

Address reprint requests to Dr. I. Juhan-Vague, Laboratory of Hematology, CHU Timone, 13385 Marseille Cedex 5, France.

Received for publication 6 July 1992 and in revised form 3 December 1992.

1. Abbreviations used in this paper: CM, conditioned media; HUVEC, human umbilical vein endothelial cells; PAI-1, plasminogen activator inhibitor-1.

J. Clin. Invest.

© The American Society for Clinical Investigation, Inc.

0021-9738/93/05/2185/09 \$2.00

Volume 91, May 1993, 2185–2193

triacylglycerol synthesis (30). In this study we have examined PAI-1 synthesis and acetate incorporation into lipids after induction of an insulin-resistant state in Hep G2 cells by acute exposure to high insulin concentrations. The data have established that down-regulation of insulin receptors leads to a reduction in acetate incorporation and in contrast, an up-regulation of PAI-1 synthesis. Metformin in the presence of insulin, inhibited the insulin-mediated PAI-1 synthesis but exerted no effect on insulin-mediated acetate incorporation indicating that the two insulin actions are regulated by different mechanisms.

## Methods

The human hepatoma cell line Hep G2 was provided by Dr. B. Knowles, Wistar Institute of Anatomy and Biology (Philadelphia, PA). Fetal calf serum, cell culture reagents, cell culture medium, and molecular biology reagents were purchased from Gibco BRL Life Technologies (Cergy Pontoise, France). BSA (cell culture reagent tested), endothelial cell growth supplement, and chemicals were obtained from Sigma Chemical Co. (St. Louis, MO). Plastic tissue culture flasks and plates were obtained from Falcon Labware (Becton, Dickinson & Co., Meylan, France). Human insulin (solution for injection,  $7 \times 10^{-4}$  M) was purchased from Novo Industries (Copenhagen, DK). Monoclonal antibodies specific for PAI-1 and PAI-1 cDNA human probe were a gift of Prof. D. Collen, Dr. P. J. Declerck, and Dr. L. Nelles (Center for Thrombosis and Vascular Research, Leuven, Belgium).  $\beta$ -actin cDNA human probe was purchased from Clontech (Palo Alto, CA). [ $^{35}$ S]Methionine,  $^{125}$ I-insulin, [ $^{14}$ C]acetic acid sodium salt, nylon  $N^+$  membranes, and multiprime labeling DNA system were purchased from Amersham International (Amersham, UK). Safe Emulsifier was from Packard (Meriden USA). Metformin was a gift from Liph Laboratories (Lyon, France).

### Cell culture

Cells from the human hepatoma cell line Hep G2 were grown to confluency in Ham's F12/Eagle's MEM supplemented with 10% heat-inactivated FCS, 2 mM L-glutamine, 100 IU/ml penicillin, and 100  $\mu$ g/ml streptomycin under a 5%  $CO_2$  atmosphere. For specific experiments Hep G2 monolayers were cultured on 24- or 12-well culture plates. 24 h after reaching confluence, Hep G2 monolayers were cultured overnight in serum-starved medium supplemented with 0.5% BSA followed by incubation with insulin and/or metformin at different concentrations. Human umbilical vein endothelial cells (HUVEC) were isolated from umbilical cord veins according to the method of Jaffe et al. (31). Cells were used at confluency after one passage. For specific experiments, confluent HUVEC monolayers were passed on 24-well plates. Cell viability was assessed by the trypan blue dye exclusion test. Conditioned media (CM) were harvested, immediately centrifuged at 2,000 g to exclude cellular debris, aliquoted, and stored at  $-20^\circ C$ . Cells were trypsinized and counted.

### PAI-1 antigen assay

PAI-1 antigen (PAI-1 Ag) assay in CM was performed using an ELISA as described elsewhere (32). Results were expressed in terms of PAI-1 Ag per  $10^6$  cells.

### RNA extraction and Northern blot analysis

Total RNA was extracted according to Chomczynski et al. (33) and fractionated on 1.2% agarose gel containing 20% formaldehyde. RNA was transferred to nylon  $N^+$  membranes. Hybridization conditions and processing of the filters were carried out as described by Medcalf et al. (34). The PAI-1 cDNA probe was a 436-bp fragment of human PAI-1 cDNA. The human  $\beta$ -actin probe was a complete 2-kb human  $\beta$ -actin cDNA and was used as control. The PAI-1 cDNA and  $\beta$ -actin cDNA probes were labeled with [ $\alpha$ - $^{32}$ P]dCTP using the random priming technique (35).

### [ $^{14}$ C]Acetate incorporation

Serum-starved Hep G2 monolayers were incubated with [ $^{14}$ C]acetic acid sodium salt ([ $^{14}$ C]acetate 1  $\mu$ Ci/ml, sp act 56.2 mCi/mM) in presence of insulin and/or metformin. At the end of the incubation the conditioned media were discarded, the monolayers were rinsed three times with cold PBS and the cells were incubated on ice with a lysing buffer (Tris HCl 0.05 M, pH 8.0, NaCl 0.15 M, NP-40 1%, PMSF 1 mM, and aprotinin 1  $\mu$ g/ml). The cell extracts were centrifuged to eliminate cell debris and an aliquot (50  $\mu$ l) was used for quantifying the protein content. Incorporation of [ $^{14}$ C]acetate in the lipid phase of the cell extracts was assayed as described by Folch et al. (36). An aliquot (150  $\mu$ l) of the lipid phase was mixed with 10 ml of Safe Emulsifier and counted in a  $\beta$  counter.

### Residual binding of $^{125}$ I-insulin to Hep G2 cells

Residual insulin binding was performed on serum-starved cell monolayers in the presence of  $^{125}$ I-insulin as follows: after a 24-h incubation with insulin and/or metformin, cells were acid-washed three times at  $4^\circ C$  as described by Garvey et al. (18) to remove bound insulin, followed by three rinses in PBS. Cells were then incubated for 3 h at  $4^\circ C$  in MEM Ham's F12 medium 0.5% BSA containing 0.2 ng  $^{125}$ I-insulin per well. Free hormone was removed with five rinses of cold PBS and the cells were again acid-washed with 250  $\mu$ l of MEM, pH 4.0, to dissociate receptor-bound insulin. The radioactivity recovered in the acid-washed eluate was counted. Nonspecific binding determined with the addition of 200 ng of unlabeled insulin was  $<5\%$  of total counts bound.

### Down-regulation of Hep G2 cells

Down-regulation of Hep G2 cell receptors was performed as described by Blake et al. (25): serum-starved confluent Hep G2 cells were preincubated with a high concentration of insulin ( $10^{-7}$  M) for a prolonged time (18 h), cooled on ice to avoid receptor recycling, acid-washed in MEM, pH 4.0, to remove bound insulin, and then washed with PBS, and finally with culture medium, each washing being performed three times. When required, cells were preincubated with  $10^{-7}$  M insulin for different times and subsequently treated as described above.

### Insulin stimulation of Hep G2 cells

**Control cells.** Serum-starved Hep G2 cells were incubated for 24 h with doses of insulin ranging between  $10^{-10}$  and  $10^{-7}$  M. Unstimulated cells were used as controls. When required control cells were incubated with  $10^{-7}$  or  $10^{-9}$  M insulin for different times. PAI-1 secretion, PAI-1 RNA expression and [ $^{14}$ C]acetate incorporation into lipids were assayed as above.

**Down-regulated cells.** Down regulation was performed as described above; cells were subsequently stimulated with  $10^{-9}$  M insulin for 24 h. Control unstimulated cells were kept in serum-starved medium during the two steps of this procedure. Control down-regulated cells were down-regulated by  $10^{-7}$  M insulin for 18 h, acid-washed, and kept in serum-starved medium for a further 24-h incubation.

Measurements of insulin remaining in the conditioned media were performed due to insulin degradation. We assayed insulin concentrations during the two incubation periods: (a) when  $10^{-9}$  M insulin was added to Hep G2 cells, the insulin content in the medium decreased 12 h after the beginning of the incubation and was not detectable after 18 h; (b) when  $10^{-7}$  M insulin was added to the cells, the insulin remaining in the medium after an 18-h incubation represents one third of the initial content. Residual insulin was eliminated by acid washes (25).

### Effect of metformin on insulin-mediated PAI-1 synthesis and [ $^{14}$ C]acetate incorporation

The effects of metformin on insulin stimulation were studied by incubating serum starved control Hep G2 cells for 24 h with insulin in presence of different concentrations of metformin ranging between  $10^{-6}$  and  $10^{-3}$  M. The time-dependent effect of metformin on insulin-mediated PAI-1 secretion was studied by incubating Hep G2 cells with  $10^{-4}$  M metformin for up to 24 h.

To study the effect of metformin on insulin stimulation in down-regulated cells,  $10^{-4}$  M metformin was added either to  $10^{-7}$  M insulin in the 18-h preincubation step, or to  $10^{-9}$  M insulin in the stimulation step.

When required, Hep G2 cells were stimulated for 24 h by  $10^{-7}$  M PMA (37) in absence or presence of  $10^{-4}$  M metformin.

HUVEC were stimulated for 24 h by IL-1 10 IU/ml (38) in presence or absence of  $10^{-4}$  M metformin.

### Statistical analysis

Data are expressed as mean $\pm$ SE. The significance of differences was examined using unpaired Student's *t* test. *P* values < 0.05 were considered significant.

## Results

### Effects of insulin on PAI-1 synthesis and acetate incorporation

The effects of insulin on PAI-1 synthesis and acetate incorporation were studied in control or down-regulated cells.

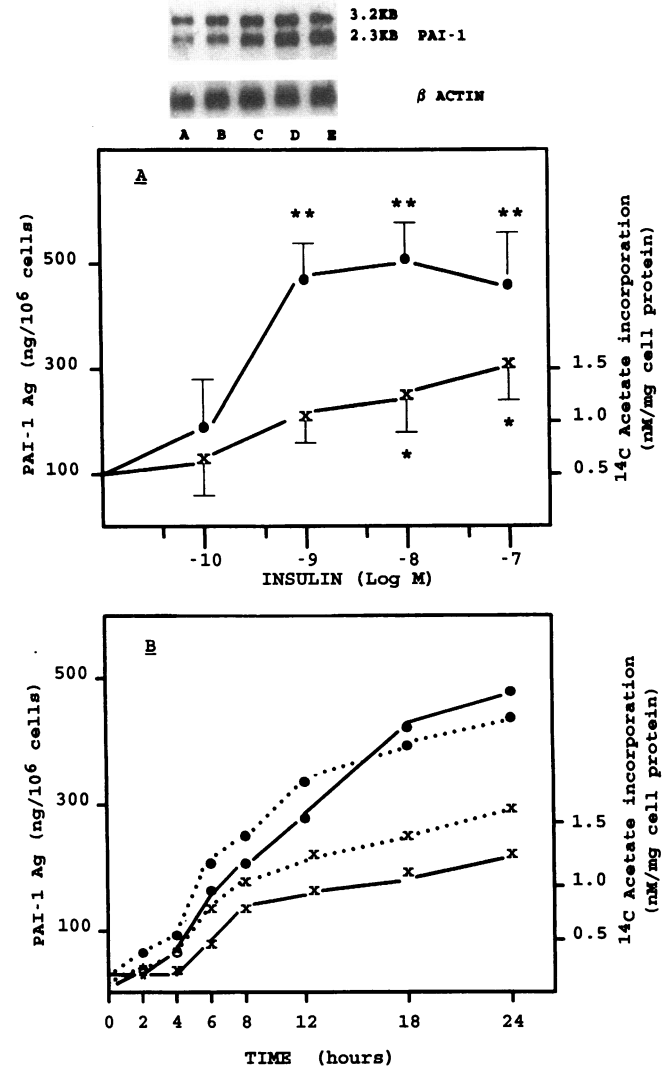
**Control cells.** Serum-starved Hep G2 cells were cultured for up to 24 h with increasing doses ( $10^{-10}$  to  $10^{-7}$  M) of insulin. As previously shown (26) our results confirm that insulin induced a dose-dependent increase in PAI-1 secretion up to 4.8-fold (Fig. 1A). The maximal effect occurred with  $10^{-8}$  M insulin ( $469\pm 39.3$  in stimulated cells versus  $101\pm 8.3$  ng/ $10^6$  cells in control cells, *P* < 0.01). Insulin also induced changes in PAI-1 mRNA expression. The steady-state level of both forms of mature PAI-1 mRNA (3.2 and 2.3 kb) was increased by insulin stimulation. No change in the  $\beta$ -actin gene expression was observed (Fig. 1, inset).

Insulin induced a dose-dependent increase from  $10^{-10}$  to  $10^{-7}$  M in [ $^{14}$ C]acetate incorporation into Hep G2 cells up to 2.2-fold ( $1.52\pm 0.12$  vs.  $0.69\pm 0.09$  nM/mg protein [*P* < 0.05]) when the cells were stimulated by  $10^{-7}$  M insulin.

Kinetic studies indicate that insulin at  $10^{-7}$  and  $10^{-9}$  M, induced a time-dependent increase in PAI-1 secretion and [ $^{14}$ C]acetate incorporation into Hep G2 cells with a 4-h lag-phase (Fig. 1B).

**Down-regulated cells.** Serum-starved Hep G2 cells were down-regulated by  $10^{-7}$  M insulin for 18 h, then stimulated for 24 h with  $10^{-9}$  M insulin. PAI-1 synthesis and [ $^{14}$ C]acetate incorporation were evaluated at the end of the stimulation step. Results in Fig. 2A indicated that in down-regulated cells, a stimulation with  $10^{-9}$  M insulin led to an increase in PAI-1 secretion by 1.4-fold over the level induced by the same stimulation of control cells ( $597\pm 54$  vs.  $408\pm 39$  ng/ $10^6$  cells), and by 5.9-fold over the level of the unstimulated control cells ( $597\pm 54$  vs.  $101\pm 8.3$  ng/ $10^6$  cells). It should be noted that PAI-1 secretion levels from down-regulated cells kept in serum-starved medium for an additional 24 h after acid wash were not significantly different from those observed with control cells ( $132\pm 15.9$  vs.  $101\pm 8.3$  ng/ $10^6$  cells, Fig. 2A). Stimulation mediated by  $10^{-9}$  M insulin of down-regulated Hep G2 cells induced changes in PAI-1 mRNA expression. This procedure resulted in the stimulation of both forms of mature PAI-1 mRNA over the expression mediated by  $10^{-9}$  M insulin in control cells (Fig. 2, inset). No change in  $\beta$ -actin mRNA expression was observed.

In contrast to PAI-1 synthesis, the stimulation with  $10^{-9}$  M insulin in down-regulated cells, resulted in a net decrease in



**Figure 1.** Dose- and time-dependent effects of insulin on PAI-1 secretion (●) and [ $^{14}$ C]acetate incorporation (x) in Hep G2 cells. (A) Dose-dependent effects of a 24-h insulin stimulation on PAI-1 secretion (●) and [ $^{14}$ C]acetate incorporation (x). Results represent means $\pm$ SE of five experiments performed in triplicate: \**P* < 0.05, \*\**P* < 0.01. Inset: Effects of increasing doses of insulin on PAI-1 and  $\beta$ -actin mRNA expression in Hep G2 cells. Lane A, control cells; lane B,  $10^{-10}$  M insulin; lane C,  $10^{-9}$  M insulin; lane D,  $10^{-8}$  M insulin; lane E,  $10^{-7}$  M insulin. (B) Time-dependent effects of insulin on PAI-1 secretion (●) and [ $^{14}$ C]acetate incorporation (x). Hep G2 cells were stimulated up to 24 h by  $10^{-9}$  M (—) or  $10^{-7}$  M (· · ·) insulin. Results represent means of two experiments performed in duplicate.

[ $^{14}$ C]acetate incorporation (Fig. 2B): it resulted in a 2.4-fold decrease compared with the level obtained with  $10^{-9}$  M insulin in control cells ( $0.5\pm 0.2$  vs.  $1.18\pm 0.09$  nM/mg protein [*P* < 0.05]) and a 1.4-fold decrease compared with unstimulated control cells ( $0.51\pm 0.04$  vs.  $0.69\pm 0.09$  nM/mg protein [*P* < 0.05]). Down-regulated cells kept for a further 24-h incubation in serum-starved medium expressed [ $^{14}$ C]acetate incorporation identical to control unstimulated cells ( $0.76\pm 0.1$  vs.  $0.69\pm 0.09$ ).

The preincubation time required to induce hypersecretion of PAI-1 and to decrease [ $^{14}$ C]acetate incorporation was then

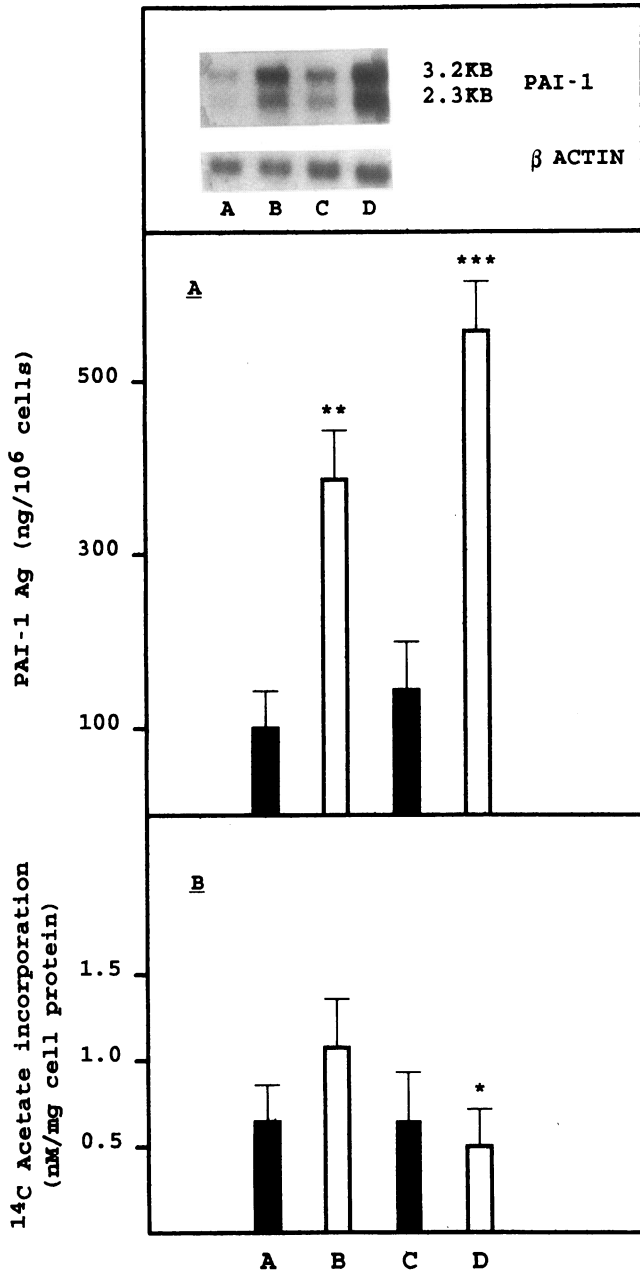


Figure 2. Effects of  $10^{-9}$  M insulin stimulation for 24 h on PAI-1 secretion (A), [ $^{14}$ C]acetate incorporation (B), and PAI-1 and  $\beta$ -actin mRNA expression (inset) in control and down-regulated Hep G2 cells. Lane A, control unstimulated cells; lane B, control cells stimulated by  $10^{-9}$  M insulin; lane C, down-regulated cells washed and kept in serum-starved medium for 24 h; lane D, down-regulated cells washed and stimulated for 24 h by  $10^{-9}$  M insulin. Results in panels A and B represent means  $\pm$  SE of five experiments performed in triplicate. \* $P < 0.05$ ; \*\* $P < 0.01$ ; \*\*\* $P < 0.001$ .

investigated. Hep G2 cells were preincubated for different times, up to 18 h, with  $10^{-7}$  M insulin and after acid wash, they were stimulated for 24 h with  $10^{-9}$  M insulin. Kinetic studies (Fig. 3) reveal that PAI-1 secretion began to gradually decrease in down-regulated cells during the first 4 h of preincubation and was then progressively enhanced when the preincubation time was increased from 4 to 18 h. In contrast to PAI-1 secretion, a 4 h preincubation with  $10^{-7}$  M insulin was effective in

decreasing [ $^{14}$ C]acetate incorporation, and this level remained unchanged irrespective of the time used for the preincubation.

#### Effects of metformin on insulin-mediated PAI-1 synthesis and acetate incorporation

**Control cells.** The effects of increasing doses ( $10^{-6}$  to  $10^{-3}$  M) of metformin on PAI-1 synthesis mediated by  $10^{-9}$  M insulin during a 24-h stimulation of control cells were first investigated. Metformin exerted a dose-dependent inhibition on the insulin-mediated PAI-1 secretion for doses ranging between  $10^{-5}$  and  $10^{-3}$  M (Fig. 4A). When cells were stimulated for increasing times with  $10^{-9}$  M insulin in presence of  $10^{-4}$  M metformin, the inhibitory effect of the drug was observed as soon as the stimulating effect of insulin was detectable, i.e., after a 4-h incubation. From the 8th h, a complete inhibition of insulin-mediated PAI-1 synthesis was obtained (Fig. 4B).

In the presence of  $10^{-4}$  M metformin, the stimulating effect of  $10^{-10}$  to  $10^{-7}$  M insulin was abolished, PAI-1 levels being identical to unstimulated control cell levels (Fig. 5). The same results were obtained with  $10^{-3}$  M metformin (data not shown). Metformin alone had no effect on PAI-1 constitutive secretion (Table I) or PAI-1 mRNA expression (Fig. 6, inset, lane A). The inhibitory effect of metformin on insulin-mediated PAI-1 synthesis was also observed at the mRNA level. Metformin inhibited the insulin-mediated increase in both 3.2- and 2.3-kb transcripts of PAI-1 mRNA. No change in the  $\beta$  actin gene expression could be observed after insulin or insulin plus metformin stimulation (Fig. 6, inset, lane B).

The effects of  $10^{-4}$  M metformin on [ $^{14}$ C]acetate incorporation mediated by  $10^{-10}$  M to  $10^{-7}$  M insulin were studied. As illustrated in Fig. 5, incubation of Hep G2 cells with  $10^{-4}$  M metformin had no significant effect on insulin-mediated [ $^{14}$ C]-acetate incorporation irrespective of the insulin concentration studied. Therefore, in Hep G2 cells, metformin was able to suppress the insulin-mediated PAI-1 synthesis but not the insulin-mediated acetate incorporation into lipids.

**Down-regulated cells.** The effects of metformin on insulin-

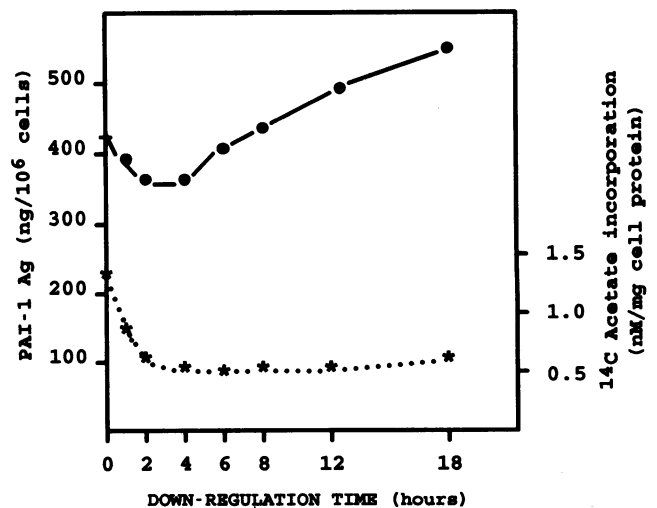
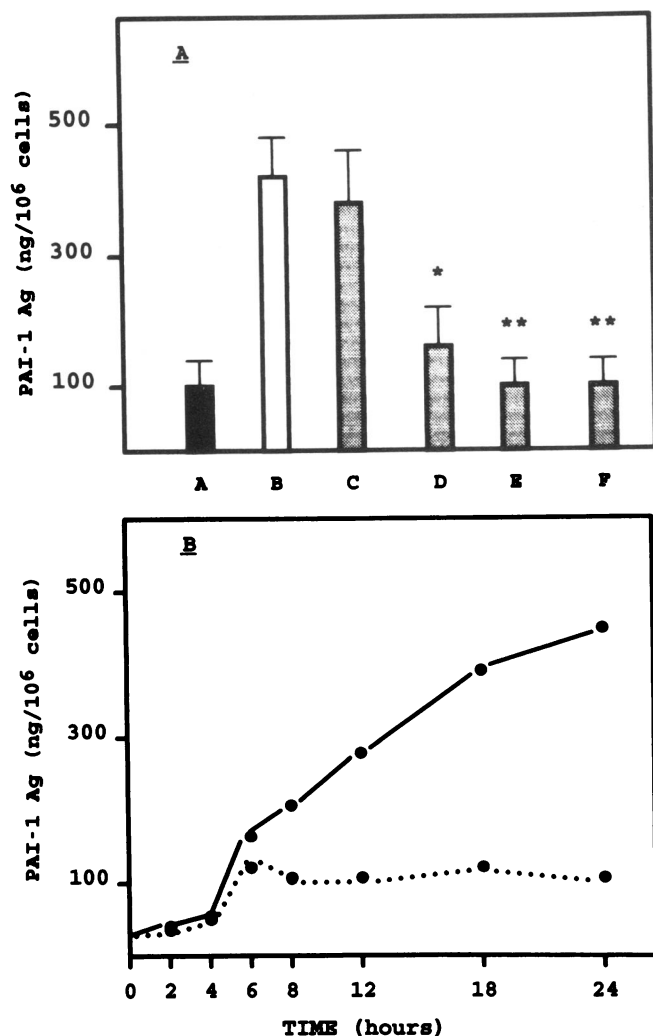
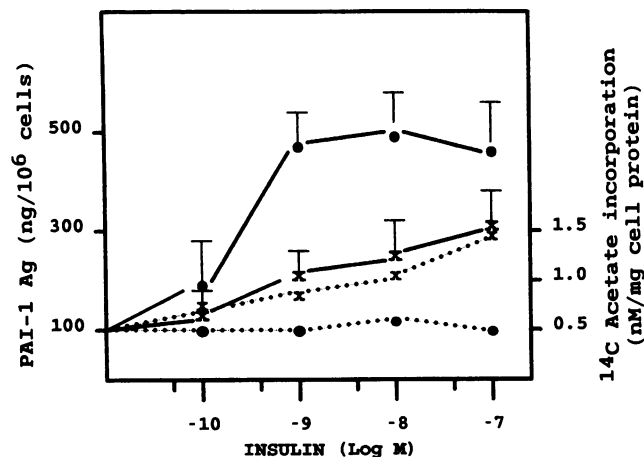


Figure 3. Effects of the down-regulation time on PAI-1 secretion ( $\bullet$ ) and [ $^{14}$ C]acetate incorporation ( $\times$ ). Hep G2 cells were down-regulated for increasing times by  $10^{-7}$  M insulin, and after acid washes, stimulated for 24 h by  $10^{-9}$  M insulin. Results represent means of three experiments performed in duplicate.

mediated PAI-1 synthesis and acetate incorporation in down-regulated cells were then investigated. In the first set of experiments Hep G2 cells were incubated for 18 h with  $10^{-7}$  M insulin in presence of  $10^{-4}$  M metformin, and after washing, were stimulated by  $10^{-9}$  M insulin. Results in Fig. 6A indicated that addition of metformin in the preincubation procedure completely reversed the overproduction of PAI-1 synthesis mediated by  $10^{-9}$  M insulin in down-regulated cells, the levels of PAI-1 secretion being identical to unstimulated control cell levels ( $P < 0.001$ ). In a further set of experiments  $10^{-4}$  M metformin was added to  $10^{-9}$  M insulin in the stimulation step. Results indicated that metformin inhibited the insulin-mediated PAI-1 synthesis, to a similar extent to that obtained



**Figure 4.** Dose- and time-dependent effects of metformin on insulin-mediated PAI-1 secretion by Hep G2 cells. (A) Dose-dependent effects of a 24-h insulin stimulation with increasing doses of metformin ( $10^{-6}$  to  $10^{-3}$  M) for 24 h. Lane A, control cells; lane B, control cells stimulated by  $10^{-9}$  M insulin; lane C, control cells stimulated by  $10^{-9}$  M insulin—plus  $10^{-6}$  M metformin; lane D, -plus  $10^{-5}$  M metformin; lane E, -plus  $10^{-4}$  M metformin; lane F, -plus  $10^{-3}$  M metformin. Results represent means $\pm$ SE of three experiments performed in triplicate: \* $P < 0.05$ ; \*\* $P < 0.01$ . (B) Time-dependent effects of metformin on insulin-mediated PAI-1 synthesis. Hep G2 cells were incubated with  $10^{-9}$  M insulin in the absence (—) or in presence (· · ·) of  $10^{-4}$  M metformin for up to 24 h. Results represent means of two experiments performed in duplicate.



**Figure 5.** Effects of  $10^{-4}$  M metformin on PAI-1 secretion and [<sup>14</sup>C]acetate incorporation mediated by increasing doses of insulin in Hep G2 cells. PAI-1 secretion after stimulation with insulin alone (●—●) or with insulin plus  $10^{-4}$  M metformin (●···●). [<sup>14</sup>C]Acetate incorporation after stimulation with insulin alone (x—x) or with insulin plus  $10^{-4}$  M metformin (x···x). Results represent means $\pm$ SE of five experiments performed in triplicate.

by addition of metformin in the preincubation step. The suppressive effect of metformin on the insulin-mediated PAI-1 overproduction resulted from an inhibition of the expression of PAI-1 mRNA (Fig. 6, inset, lane C), without change in the  $\beta$ -actin gene expression.

The effect of  $10^{-4}$  M metformin on incorporation of [<sup>14</sup>C]-acetate into lipids was tested using the same conditions of culture. Results in Fig. 6B indicate that the addition of metformin to insulin did not modify the insulin-mediated acetate incorporation in down-regulated cells irrespective of the time that the drug was added.

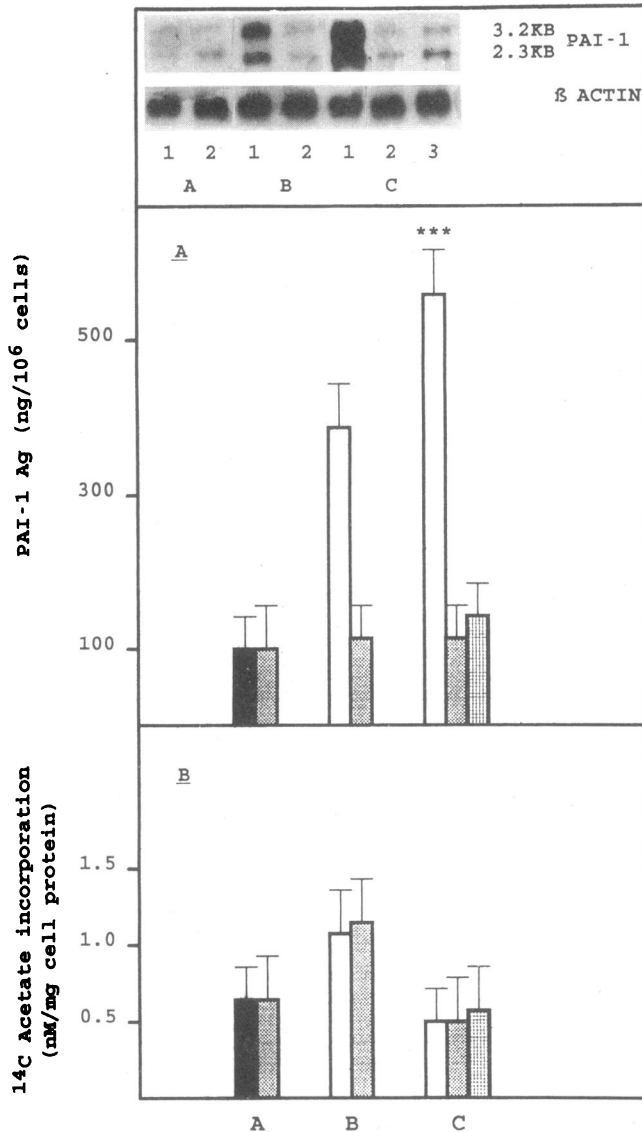
#### Specificity of metformin effects for insulin-mediated PAI-1 synthesis

To test whether metformin could inhibit PAI-1 synthesis mediated by other agents known to regulate PAI-1 synthesis, we tested the effect of metformin on PMA stimulation. Addition

**Table I.** Effects of Metformin on PAI-1 Synthesis

Cells	Stimulating agents	Metformin	PAI-1 Ag ng/10 <sup>6</sup> cells
Hep G2	—	—	100.6 $\pm$ 18.3
	—	$10^{-3}$ M	127.9 $\pm$ 15.3
	—	$10^{-4}$ M	113.3 $\pm$ 17.2
	—	$10^{-5}$ M	107.5 $\pm$ 8.9
	—	$10^{-6}$ M	105.8 $\pm$ 12.4
	PMA $10^{-7}$ M	—	1446.6 $\pm$ 186.3
HUVEC	PMA $10^{-7}$ M	$10^{-4}$ M	1451.6 $\pm$ 201.4
	Insulin $10^{-9}$ M	—	408.4 $\pm$ 39.3
	Insulin $10^{-9}$ M	$10^{-4}$ M	110.8 $\pm$ 17.4
	IL-1 10 IU/ml	—	908.3 $\pm$ 10.2
	IL-1 10 IU/ml	$10^{-4}$ M	3462.5 $\pm$ 393.7

Metformin was added alone or in combination with the different stimulating agents. Incubation was performed for 24 h and PAI-1 Ag was assayed in CM. Results represent means of three experiments $\pm$ SE.



**Figure 6.** Effects of  $10^{-4}$  M metformin on PAI-1 secretion (A), [ $^{14}\text{C}$ ]acetate incorporation (B), PAI-1 and  $\beta$ -actin mRNA expression (inset) mediated by  $10^{-9}$  M insulin in control and down-regulated Hep G2 cells. Lane A, control cells: (black bar) lane 1, without metformin; (gray bar) lane 2, with  $10^{-4}$  M metformin. Lane B, control cells stimulated by  $10^{-9}$  M insulin: (open bar) lane 1, without metformin; (gray bar) lane 2, with  $10^{-4}$  M metformin. Lane C, down-regulated cells stimulated by  $10^{-9}$  M insulin: (open bar) lane 1, without metformin; (gray bar) lane 2, with  $10^{-4}$  M metformin added in the preincubation step; (dotted bars) lane 3, with  $10^{-4}$  M metformin added in the stimulation step. Results represent means  $\pm$  SE of four experiments performed in triplicate.

of  $10^{-4}$  M metformin to  $10^{-7}$  M PMA did not modify the PMA-induced PAI-1 accumulation in a 24-h CM (Table I). The effect of metformin on IL-1-induced PAI-1 secretion by HUVEC was also tested. HUVEC were incubated for 24 h with IL-1 (10 UI/ml) in presence and absence of metformin  $10^{-4}$  M). Results in Table I indicated that, at this dose, Metformin did not modify the IL-1-induced PAI-1 secretion.

#### Residual binding of $^{125}\text{I}$ -insulin on Hep G2 cells

Changes in insulin responsiveness in the presence of metformin could result from differences in cell surface insulin bind-

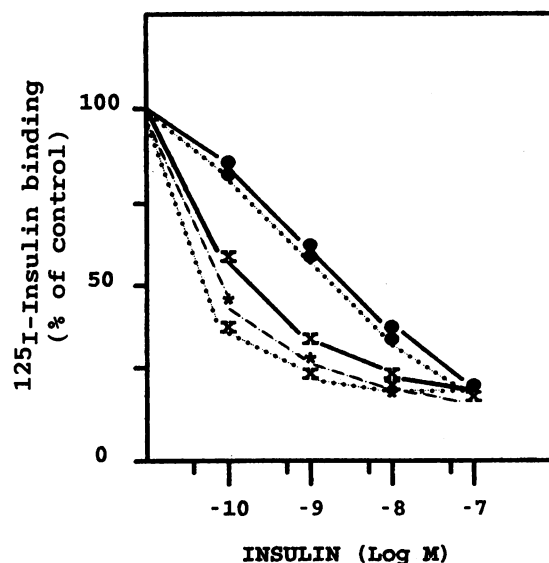
ing. We studied the expression of insulin receptors by the binding of tracer amounts (0.2 ng) of  $^{125}\text{I}$ -insulin on Hep G2 cells after incubation with insulin and/or metformin. Results are presented in Fig. 7. Stimulation of Hep G2 cells with insulin  $10^{-10}$  to  $10^{-7}$  M for 24 h resulted in a dose-dependent loss of cell surface receptors compared to unstimulated control cells taken as 100%. Stimulation of cells by  $10^{-9}$  M insulin, led to a 40% decrease and stimulation by  $10^{-7}$  M insulin led to a 81% decrease in residual insulin binding.

The effect of insulin stimulation on down-regulated cells resulted, as expected, in a more marked decrease of residual insulin binding:  $10^{-9}$  M insulin added to down-regulated cells induced a decrease of 70% compared to unstimulated control cells taken as 100%.

Addition of  $10^{-4}$  M metformin to unstimulated control cells and to insulin-stimulated control cells had no significant effect on the  $^{125}\text{I}$ -insulin binding when compared to cells preincubated without the drug. In the down-regulation procedure,  $10^{-4}$  M metformin exerted no significant effect on the  $^{125}\text{I}$  residual insulin binding irrespective of the time at which the drug was added to insulin, i.e., during the preincubation or the stimulation step. These results showed that insulin stimulation induced a loss in cell surface receptors and addition of metformin displayed no significant effect on the expression of insulin receptors.

#### Discussion

Resistance to insulin-mediated glucose disposal is a well-known phenomenon associated with obesity (7). The syndrome of insulin resistance is characterized by a compensatory hyperinsulinemia, hypertriglyceridemia, low plasma high density lipoprotein cholesterol concentration, and high blood pressure. These features usually cluster in the same individual and have been identified as increasing the risk of coronary heart



**Figure 7.**  $^{125}\text{I}$ -insulin residual binding in control (●) and down-regulated Hep G2 cells (x) stimulated by increasing concentrations of insulin. Binding in control unstimulated cells was taken as 100%: (—) without metformin; (···) with  $10^{-4}$  M metformin (added in the preincubation step for down-regulated cells); (- - -) with  $10^{-4}$  M metformin added in the stimulation step.

disease (8). High plasma PAI-1 activity has been shown in a cohort of young survivors of myocardial infarction to be an independent risk marker for reinfarction (39) and is associated with insulin resistance (9). Clear relationships have been observed among insulinemia, serum triglycerides, and PAI-1 (40). Interventional measures including weight loss and metformin administration result in a reduction of both insulin resistance and plasma PAI-1 levels (15).

Hepatic insulin resistance is found in obesity and in non-insulin-dependent diabetic subjects (41). Cellular sensitivity to insulin is dependent on the level of functional insulin receptors on the cell surface, and a well-established inverse relationship exists between ambient insulin levels and the number of cell surface insulin receptors (18, 20, 21). Our purpose was to reproduce a hepatic insulin-resistant state by decreasing insulin receptor numbers in the human hepatoma cell line Hep G2, which is known to synthesize PAI-1 in response to insulin (26). Hep G2 cell receptors were down-regulated by an exposure to a high concentration of insulin. It has been shown that exposure of Hep G2 cells to  $10^{-7}$  M insulin for 18 h was efficient to allow internalization of the insulin receptor (25) and to selectively and markedly down-regulate the steady-state level of its mRNA (42, 43). Our results from the residual  $^{125}$ I-insulin trace amount binding as shown in Fig. 7 are in agreement with these data. The residual binding is inversely proportional to both the time and concentration of insulin to which the cells are exposed.

Insulin is a potent stimulator of fatty acid synthesis and lipogenesis (30). Physiological concentrations of insulin have been shown to increase the cellular content of triacylglycerol in hepatocytes from normal and diabetic rats (44, 45). We first confirmed that insulin stimulated PAI-1 synthesis in a dose- and time-dependent manner. The maximal effect was obtained for a concentration of insulin similar to that found in the portal vein after a meal (46). We also confirmed that the stimulation of [ $^{14}$ C]acetate incorporation into lipid extract by insulin was dose and time dependent. Nevertheless, the cells were less sensitive to the insulin stimulation as far as lipid synthesis is concerned.

Comparisons between insulin residual binding and acetate incorporation indicated that down-regulated cells expressed low insulin receptor numbers and consequently, [ $^{14}$ C]acetate incorporation in response to an insulin stimulation was markedly reduced. These data are in agreement with the development of an insulin-resistant state induced by the down-regulation of the insulin receptors, leading to a reduced responsiveness of the cells to insulin. In contrast to the above-mentioned data, down-regulation of Hep G2 cells did not induce a decrease in the insulin-mediated PAI-1 synthesis in spite of the loss of surface receptors. On the contrary, PAI-1 secretion was increased above the secretion level observed in stimulated non-down-regulated cells. Kinetic analysis showed that the overexpression of insulin-mediated PAI-1 synthesis in down-regulated cells was observed for down-regulation times longer than 4 h. This effect was dependent on the time of down-regulation. This over production of PAI-1 resulted from an insulin-mediated stimulation of PAI-1 mRNA steady state levels. The mechanism leading to this increased synthesis remains unknown.

Insulin resistance is usually expressed in terms of reduced glucose transport (8, 47) associated with other post receptor defects (48, 49) including a loss of tyrosine kinase activity

which is important for transducing the biological effects of insulin (50–52). Down-regulated Hep G2 cells expressed multifunctional defects including an increased proportion of tyrosine kinase incompetent insulin receptors leading to a defect of insulin–receptor complex internalization (53). Although there is a general agreement that insulin receptor tyrosine kinase activity mediates many of the actions of insulin, the stimulation of this enzyme may not be a necessary step for all insulin signaling pathways. Some studies now suggest that a non-tyrosine kinase-dependent pathway may also exist (54, 55). The discrepancy between the regulations of lipid and PAI-1 synthesis in our model may be relevant for multiple signal transduction pathways that would explain the biological actions of insulin. Nevertheless, a direct relationship between PAI-1 synthesis and non-tyrosine-dependent pathways remains to be proven.

Metformin has been shown *in vivo* to lower both basal PAI-1 levels in obese nondiabetic women (15) and postvenous occlusion PAI-1 levels in type II diabetic patients (56). We have previously shown that the decrease in fasting insulinemia was associated with a decrease in plasma PAI-1 (15). Our present study indicates that metformin in therapeutic doses (57) exerts a direct effect on PAI-1 synthesis at the cellular level by suppressing the insulin stimulating effect both in control and down-regulated cells. Metformin added to insulin in down-regulated cells inhibited the over production of PAI-1 synthesis by a direct effect on PAI-1 mRNA expression. Indeed its addition to  $10^{-7}$  M insulin in the preincubation step rendered down-regulated Hep G2 cells unresponsive to a further stimulation by  $10^{-9}$  M insulin, in spite of its elimination from the medium by washings. However, metformin did not display any activity either on the steady-state level of PAI-1 synthesis or on basal [ $^{14}$ C]acetate incorporation and residual  $^{125}$ I-insulin binding. The results on  $^{125}$ I-insulin binding in the presence of metformin are in agreement with previous reports indicating that metformin modified neither the insulin binding nor the affinity of insulin receptors (58). The action on lipogenesis by metformin remains unclear. Melin et al. (59) reported a restoration of lipogenesis by metformin in rat insulin-resistant hepatocytes but such differences between our respective results could be explained by the use of different cells and protocols.

The intracellular site of action of metformin presently remains unknown. Usually metformin restores the biological effect of insulin by enhancing the substrate uptake (58). In contrast, in our study, metformin decreased the paradoxical effect of insulin on PAI-1 synthesis to normal levels. Our results clearly indicate that metformin may modify some aspects of the action of insulin in Hep G2 cells but not by increasing the binding of insulin to its receptor. Similarly metformin has been shown to have no effect on insulin-mediated amino butyrate incorporation in rat hepatoma cells whereas it enhanced the insulin-stimulated glucose incorporation into glycogen (60). The data thus suggest that several effects of insulin are mediated by several postreceptor mechanisms and that only some of these were modified by metformin. Metformin exerts several post receptor effects (61, 62) including an action on the restoration of tyrosine kinase activity (63), an improvement of glucose transport, and potentiation of GLUT 4 translocation (64, 65). This latter action is unlikely in our study because Hep G2 cells do not express GLUT 4 transporter (66).

In conclusion, the present work demonstrates the ability of insulin to induce an upregulation of PAI-1 in down-regulated cells. These findings are related to *in vivo* data showing that in

insulin-resistant patients PAI-1 plasma levels are largely increased (9) whereas insulin receptor numbers are decreased on insulin target cells (48). The results also indicate that metformin acts at a cellular level by inhibiting the insulin-mediated PAI-1 synthesis. This effect could be responsible for the decreased PAI-1 plasma levels observed in vivo after metformin therapy (15). Although extrapolation to clinical circumstances should be done with caution, our results are consistent with the hypothesis that Hep G2 cells which mimic human hepatocytes (24) behave as insulin-resistant cells in terms of PAI-1 synthesis.

## Acknowledgments

The authors would like to thank Mrs. B. Bonardo for her skillful technical assistance. They are grateful to Dr. P. André and Dr. N. Weirnsperger (Lipha Institute) for their advice on Metformin use during this work, to Dr. E. van Obberghen (INSERM U145, Nice) for his criticism in reading this manuscript, and to Dr. R. Medcalf (Laboratory of Hematology, CHUV Lausanne, Switzerland) for his advice in performing RNA assays. The research was supported by grants from INSERM (CRE 900501), Université d'Aix-Marseille II, and Conseil Régional Provence-Côte d'Azur.

## References

- Bachmann, F. W. 1987. Fibrinolysis. In Thrombosis and Haemostasis. M. Verstraete, J. Vermeylen, H. R. Lijnen, and J. Arnout, editors. Leuven University Press, Leuven, Belgium. 227-265.
- Wiman, B., and A. Hamsten. 1990. The fibrinolytic enzyme system and its role in the etiology of thrombo-embolic disease. *Semin. Thromb. Haemostasis*. 26:207-216.
- Welborn, T. A., and K. Wearne. 1979. Coronary heart disease incidence and cardiovascular mortality in Busselton with reference to glucose and insulin concentration. *Diabetes Care*. 2:154-160.
- Pyörälä, K. 1979. Relationship of glucose tolerance and plasma insulin to the incidence of coronary heart disease: results from two population studies in Finland. *Diabetes Care*. 2:131-141.
- Ducimetiere, P., E. Eschwege, L. Papoz, J. Richard, J. R. Claude and G. Rosselin. 1980. Relationship of plasma insulin level to the incidence of myocardial infarction and coronary heart disease mortality in a middle-aged population. *Diabetologia*. 19:205-210.
- Fontbonne, A., and E. Eschwege. 1991. Insulin and cardiovascular disease: Paris prospective study. *Diabetes Care*. 14:461-469.
- Reaven, G. M. 1988. The Banting Lecture: Role of insulin resistance in human disease. *Diabetes*. 37:1595-1607.
- De Fronzo, R., and E. Ferrannini. 1991. Insulin resistance: a multifaceted syndrome responsible for NIDDM, obesity, hypertension, dyslipidemia and atherosclerotic cardiovascular disease. *Diabetes Care*. 14:173-194.
- Juhan-Vague, I., M. C. Alessi, and P. Vague. 1991. Increased plasma plasminogen activator inhibitor 1 levels: a possible link between insulin resistance and atherothrombosis. *Diabetologia*. 34:457-462.
- Frayn, K. N., and P. I. Adnitt. 1972. Effects of metformin on glucose uptake by isolated diaphragm from normal and diabetic rats. *Biochem. Pharmacol.* 21:3153-3162.
- Wollen, N., and C. J. Bailey. 1988. Metformin potentiates the antigluconeogenic action of insulin. *Diabetes Metab.* 14:88-91.
- Wu, M. S., P. Johnston, W. H. Sheu, C. B. Hollenbeck, C. Y. Jeng, I. D. Goldfine, Y. D. Chen, and G. M. Reaven. 1990. Effect of metformin on carbohydrate and lipoprotein metabolism in NIDDM patients. *Diabetes Care*. 13:1-8.
- Schneider, J., T. Erren, P. Zöfel, and H. Kaffarnik. 1990. Metformin-induced changes in serum lipids, lipoproteins and apoproteins in non-insulin-dependent diabetes mellitus. *Atherosclerosis*. 82:97-103.
- Chakrabarti, R., E. D. Hocking, and G. R. Fearnley. 1965. Fibrinolytic effect of metformin in coronary artery disease. *Lancet*. 2:256-259.
- Vague, P., I. Juhan-Vague, M. C. Alessi, C. Badier, and J. Valadier. 1987. Metformin decreases the high plasminogen activator inhibitor capacity, plasma insulin and triglyceride levels in non diabetic obese subjects. *Thromb. Haemostasis*. 57:326-328.
- Marshall, S., and J. M. Olefsky. 1989. Effects of insulin incubation on insulin binding, glucose transport and insulin degradation by isolated rat adipocytes. *J. Clin. Invest.* 66:763-772.
- Caro, J. F., L. Dohm, W. Pories, and M. Sinha. 1989. Cellular alterations in liver, skeletal muscle, and adipose tissue responsible for insulin resistance in obesity and type II diabetes. *Diabetes Metab. Rev.* 5:665-689.
- Garvey, T., J. M. Olefsky, and S. Marshall. 1986. Insulin induces progressive insulin resistance in cultured rat adipocytes. Sequential effects at receptor and multiple post receptor sites. *Diabetes*. 35:258-267.
- James, D. E., R. Brown, J. Navarro, and P. E. Pilch. 1988. Insulin regulatable tissues express a unique insulin sensitive glucose transport protein. *Nature (Lond.)*. 333:183-185.
- Gavin, J. R., J. Roth, D. M. Neville, P. De Meyts, and D. N. Buell. 1974. Insulin-dependent regulation of insulin receptor concentration: a direct demonstration in cell culture. *Proc. Natl. Acad. Sci. USA*. 71:84-88.
- Livingston, N. J., B. Purvis, and D. Lockwood. 1978. Insulin-dependent regulation of the insulin sensitivity of adipocytes. *Nature (Lond.)*. 273:395-396.
- Sprengers, E., H. M. G. Princen, T. Kooistra, V. W. Van Hinsbergh. 1985. Inhibition of plasminogen activator by conditioned medium of human hepatocytes and hepatoma cell line Hep G2. *J. Lab. Clin. Med.* 105:751-756.
- Loskutoff D. 1991. Regulation of PAI-1 gene expression. *Fibrinolysis*. 5:197-206.
- Knowles, B., C. Howe, and D. Aden. 1989. Human hepatocellular carcinoma cell lines secrete the major plasma proteins and hepatitis B surface antigen. *Science (Wash. DC)*. 209:497-499.
- Blake, A. D., N. S. Hayes, E. E. Slater, and C. D. Strader. 1987. Insulin receptor desensitization correlates with attenuation of tyrosine kinase activity but not of receptor endocytosis. *Biochem. J.* 245:257-264.
- Alessi, M. C., I. Juhan-Vague, T. Kooistra, P. J. Declercq, and D. Collen. 1988. Insulin stimulates the synthesis of plasminogen activator inhibitor 1 by the human hepatocellular cell line Hep G2. *Thromb. Haemostasis*. 60:491-494.
- Kooistra, T., P. Bosma, H. Töns, A. Van Den Berg, P. Meyer, and H. Princen. 1989. Plasminogen activator inhibitor 1: biosynthesis and mRNA level are increased by insulin in cultured human hepatocytes. *Thromb. Haemostasis*. 62:723-728.
- Grant, P., M. Rüegg, and R. Medcalf. 1991. Basal expression and insulin-mediated induction of PAI-1 mRNA in Hep G2 cells. *Fibrinolysis*. 5:81-86.
- Schneider, D. J., and B. E. Sobel. 1991. Augmentation of synthesis of plasminogen activator inhibitor type 1 by insulin and insulin-like growth factor type 1: implications for vascular disease in hyperinsulinemic states. *Proc. Natl. Acad. Sci. USA*. 88:9959-9963.
- Wang, S. R., M. Pessah, J. Infante, D. Catala, C. Salvat, and R. Infante. 1988. Lipid and lipoprotein metabolism in Hep G2. *Biochim. Biophys. Acta*. 961:351-363.
- Jaffe, E., R. Nachman, C. Becker, and C. Minick. 1973. Culture of human endothelial cells obtained from umbilical veins. Identification by morphologic and immunological criteria. *J. Clin. Invest.* 52:2745-2756.
- Declercq, P. J., M. C. Alessi, M. Verstreken, E. K. O. Kruithof, I. Juhan-Vague, and D. Collen. 1988. Measurement of plasminogen activator inhibitor 1 in biologic fluids with a murine monoclonal antibody based enzyme linked immunosorbent assay. *Blood*. 71:220-225.
- Chomczynski, P., and N. Sacchi. 1987. Single-step method of RNA isolation by acid guanidinium thiocyanate-phenol chloroform extraction. *Anal. Biochem.* 162:156-159.
- Medcalf, R. L., E. A. Van Den Berg, and W. D. Schleuning. 1988. Glucocorticoid modulates gene expression of tissue and urinary-type plasminogen activators and plasminogen activator inhibitor 1 and 2. *J. Cell Biol.* 106:971-978.
- Maniatis, S. T., E. F. Fritsch, and J. Sambrook. 1989. Preparation of radiolabeled probe. In Molecular Cloning: A Laboratory Manual. Cold Spring Harbor Laboratory, Cold Spring Harbor, NY. 10.1-10.70.
- Folch, J., M. Lees, and G. H. Sloane-Stanley. 1957. A simple method for the isolation and purification of total lipids from animal tissues. *J. Biol. Chem.* 226:497-509.
- Bosma, P., and T. Kooistra. 1991. Different induction of two plasminogen activator inhibitor 1 mRNA species by phorbol ester in human hepatoma cells. *J. Biol. Chem.* 266:17845-17849.
- Emeis, J., and T. Kooistra. 1986. Interleukin 1 and lipopolysaccharide induce an inhibitor of tissue-type plasminogen activator in vivo and in cultured endothelial cells. *J. Exp. Med.* 163:1260-1266.
- Hamsten, A., U. De Faire, G. Walldius, G. Dahlen, A. Szamosi, C. Landov, M. Blömbäck, and B. Wiman. 1987. Plasminogen activator inhibitor in plasma: risk factor for recurrent myocardial infarction. *Lancet*. 2:2-3.
- Juhan-Vague, I., M. C. Alessi, P. Joly, X. Thirion, P. Vague, P. J. Declercq, A. Serradimigni, and D. Collen. 1989. Plasma plasminogen activator inhibitor 1 in angina pectoris: influence of plasma insulin and acute phase response. *Arteriosclerosis*. 9:362-367.
- Groop, L. C., R. C. Bonadonna, S. Del Prato, K. Ratheiser, K. Zych, E. Ferrannini, and R. A. De Fronzo. 1989. Glucose and free fatty acid metabolism in non insulin dependent diabetes mellitus: evidence for multiple sites of insulin resistance. *J. Clin. Invest.* 84:205-213.
- Rohilla, A. M., C. Anderson, W. Wood, and P. Berhanu. 1991. Insulin down regulates the steady-state level of its receptor's messenger ribonucleic acid. *Biochem. Biophys. Res. Commun.* 175:520-526.



43. Okabayashi, Y., B. A. Maddux, A. R. McDonald, C. D. Logsdon, J. A. Williams, and I. D. Goldfine. 1989. Mechanisms of insulin-induced insulin-receptor down regulation: decrease of receptor biosynthesis and mRNA levels. *Diabetes*. 38:182-187.
44. Durrington, P., R. S. Newton, D. B. Weinstein, and D. Steinberg. 1982. Effects of insulin and glucose on very-low density lipoprotein, triglyceride secretion by cultured rat hepatocytes. *J. Clin. Invest.* 70:63-73.
45. Duerden, J., S. Bartlett, and G. Gibbons. 1989. Regulation of very-low-density-lipoprotein lipid secretion in hepatocyte cultures derived from diabetic animals. *Biochem. J.* 262:313-319.
46. Misbin, R. I., T. J. Merimee, and J. M. Lowenstein. 1976. Insulin removal by isolated perfused rat liver. *Am. J. Physiol.* 230:171-177.
47. Flickinger, E., D. Meelheim, S. Atkinson, N. Sehgal, and J. F. Caro. 1987. Long term effect of insulin on glucose transport and insulin binding in cultured adipocytes from normal and obese humans with and without non-insulin-dependent diabetes. *J. Clin. Invest.* 80:1073-1087.
48. Olefsky, J. M. 1990. The insulin receptor: a multifunctional protein. *Diabetes*. 39:1009-1016.
49. Arsenis, G., and J. N. Livingston. 1986. Alterations in the tyrosine kinase activity of the insulin receptor produced by in vitro hyperinsulinemia. *J. Biol. Chem.* 261:147-153.
50. McClain, D. A., H. Maegawa, J. Lee, T. J. Duli, A. Ullrion, and J. M. Olefsky. 1987. A mutant insulin receptor with defective tyrosine kinase displays no biologic activity and does not undergo endocytosis. *J. Biol. Chem.* 262:14663-14671.
51. Russell, D. S., R. Gherzi, E. L. Johnson, C. K. Chou, and O. M. Rosen. 1987. The protein-tyrosine kinase activity of the insulin receptor is necessary for insulin-mediated receptor down-regulation. *J. Biol. Chem.* 262:11833-11840.
52. Maegawa, H., J. M. Olefsky, S. Thies, D. V. Boyd, A. Ulrich, and D. A. McClain. 1988. Insulin receptors with defective tyrosine kinase inhibit normal receptor function at the level of substrate phosphorylation. *J. Biol. Chem.* 263:12629-12637.
53. Williams, J., and J. M. Olefsky. 1990. Defective insulin receptor function in down-regulated Hep G2 cells. *Endocrinology*. 127:1706-1717.
54. Rothenberg, P. L., and C. R. Kahn. 1988. Insulin inhibits Pertussis toxin-catalyzed ADP-ribosylation of G-proteins: evidence for a novel interaction between insulin receptors and G proteins. *J. Biol. Chem.* 263:15546-15552.
55. Sung, C. K. 1992. Insulin receptor signaling through non-tyrosine kinase pathways: evidence from anti-receptor antibodies and insulin receptor mutants. *J. Cell. Biochem.* 48:26-32.
56. Grant, P. J., M. H. Stickland, N. A. Booth, and C. R. M. Prentice. 1991. Metformin causes a reduction in basal and post-venous occlusion plasminogen activator inhibitor 1 in type 2 diabetic patients. *Diabetes Med.* 8:361-365.
57. Pentikäinen, P. J., P. Neuvonen, and A. Penttilä. 1979. Pharmacokinetics of metformin after intravenous and oral administration to man. *Eur. J. Clin. Pharmacol.* 16:195-202.
58. Klip, A., and L. A. Leiter. 1991. Cellular mechanism of action of metformin. *Diabetes Care*. 13:696-704.
59. Melin, B., G. Cherqui, M. Blivet, M. Caron, O. Lascols, J. Capeau, and J. Picard. 1990. Dual effect of metformin in cultured rat hepatocytes: potentiation of insulin action and prevention of insulin-induced resistance. *Metab. Clin. Exp.* 39:1089-1095.
60. Purello, F., D. Gullo, M. Buscema, V. Pezzino, R. Vigneri, and I. Goldfine. 1988. Metformin enhances certain insulin actions in cultured rat hepatoma cells. *Diabetologia*. 31:385-388.
61. Benzi, L., V. Trischitta, A. Ciccarone, P. Cecchetti, A. Brunetti, S. Squarrito, P. Marchetti, R. Vigneri, and R. Navalesi. 1990. Improvement with metformin in insulin internalization and processing in monocytes from NIDDM patients. *Diabetes*. 39:844-849.
62. Alengrin, F., G. Grossi, B. Canivet, and J. Dolais Kitbagi. 1987. Inhibitory effect of metformin on insulin and glucagon action in rat hepatocytes involves post-receptor alterations. *Diabete Metab.* 13:591-597.
63. Fantus, I., and R. Brosseau. 1986. Mechanism of action of metformin: insulin receptor and post receptor effects in vitro and in vivo. *J. Clin. Endocrinol. Metab.* 63:898-905.
64. Grigorescu, F., A. Laurent, A. Chavanien, and J. P. Caponey. 1991. Cellular mechanism of metformin action. *Diabete Metab.* 17:146-149.
65. Matthaie, S., A. Hamann, H. Klein, H. Benecke, G. Kreymann, J. Flier, and H. Greten. 1991. Association of metformin's effect to increase insulin-stimulated glucose transport with potentiation of insulin induced translocation of glucose transporters from intracellular pool to plasma membrane in rat adipocytes. *Diabetes*. 40:850-857.
66. Hah, J., I. Jo, R. Chakrabarti, and C. H. Jung. 1992. Demonstration of an insulin-insensitive storage pool of glucose transporters in rat hepatocytes and Hep G2 cells. *J. Cell. Physiol.* 152:56-63.