

Cellular HIV-1 DNA Levels in Drug Sensitive Strains Are Equivalent to Those in Drug Resistant Strains in Newly-Diagnosed Patients in Europe

Victoria L. Demetriou¹, David A. M. C. van de Vijver², Ioanna Kousiappa¹, Claudia Balotta³, Bonaventura Clotet⁴, Zehava Grossman⁵, Louise B. Jørgensen⁶, Snjezana Z. Lepej⁷, Itzchak Levy⁸, Claus Nielsen⁶, Dimitrios Paraskevis⁹, Mario Poljak¹⁰, Francois Roman¹¹, Lidia Ruiz⁴, Jean-Claude Schmidt¹¹, Anne-Mieke Vandamme¹², Kristel Van Laethem¹², Jurgen Vercauteren¹², Leondios G. Kostrikis^{1*}

1 Department of Biological Sciences, University of Cyprus, Nicosia, Cyprus, **2** Department of Virology, Erasmus MC, University Medical Centre, Rotterdam, The Netherlands, **3** Institute of Infectious and Tropical Diseases, University of Milan, Milan, Italy, **4** IrsiCaixa Foundation, Hospital Germans Trias i Pujol, Barcelona, Spain, **5** National HIV Reference Lab, Central Virology, Public Health Laboratories, MOH Central Virology, Sheba Medical Centre, Ramat Gan, Israel, **6** Retrovirus Laboratory, Division of Diagnostic Microbiology, Department of Virology, Statens Serum Institut Copenhagen, Copenhagen, Denmark, **7** University Hospital for Infectious Diseases, Zagreb, Croatia, **8** Infectious Diseases Unit, Sheba Medical Centre, Ramat-Gan, Israel, **9** National Retrovirus Reference Centre, Department of Hygiene Epidemiology and Medical Statistics, Medical School, University of Athens, Athens, Greece, **10** Institute of Microbiology and Immunology, Faculty of Medicine, University of Ljubljana, Ljubljana, Slovenia, **11** Retrovirology Laboratory, Centre Hospitalier de Luxembourg, National Service of Infectious Diseases, Luxembourg, Luxembourg, **12** Katholieke Universiteit Leuven, Rega Institute for Medical Research, Leuven, Belgium

Abstract

Background: HIV-1 genotypic drug resistance is an important threat to the success of antiretroviral therapy and transmitted resistance has reached 9% prevalence in Europe. Studies have demonstrated that HIV-1 DNA load in peripheral blood mononuclear cells (PBMC) have a predictive value for disease progression, independently of CD4 counts and plasma viral load.

Methodology/Principal Findings: Molecular-beacon-based real-time PCR was used to measure HIV-1 second template switch (STS) DNA in PBMC in newly-diagnosed HIV-1 patients across Europe. These patients were representative for the HIV-1 epidemic in the participating countries and were carrying either drug-resistant or sensitive viral strains. The assay design was improved from a previous version to specifically detect M-group HIV-1 and human CCR5 alleles. The findings resulted in a median of 3.32 log₁₀ HIV-1 copies/10⁶ PBMC and demonstrated for the first time no correlation between cellular HIV-1 DNA load and transmitted drug-resistance. A weak association between cellular HIV-1 DNA levels with plasma viral RNA load and CD4⁺ T-cell counts was also reconfirmed. Co-receptor tropism for 91% of samples, whether or not they conferred resistance, was CCR5. A comparison of *pol* sequences derived from RNA and DNA, resulted in a high similarity between the two.

Conclusions/Significance: An improved molecular-beacon-based real-time PCR assay is reported for the measurement of HIV-1 DNA in PBMC and has investigated the association between cellular HIV-1 DNA levels and transmitted resistance to antiretroviral therapy in newly-diagnosed patients from across Europe. The findings show no correlation between these two parameters, suggesting that transmitted resistance does not impact disease progression in HIV-1 infected individuals. The CCR5 co-receptor tropism predominance implies that both resistant and non-resistant strains behave similarly in early infection. Furthermore, a correlation found between RNA- and DNA-derived sequences in the *pol* region suggests that genotypic drug-resistance testing could be carried out on either template.

Citation: Demetriou VL, van de Vijver DAMC, Kousiappa I, Balotta C, Clotet B, et al. (2010) Cellular HIV-1 DNA Levels in Drug Sensitive Strains Are Equivalent to Those in Drug Resistant Strains in Newly-Diagnosed Patients in Europe. PLoS ONE 5(6): e10976. doi:10.1371/journal.pone.0010976

Editor: Douglas F. Nixon, University of California San Francisco, United States of America

Received: April 15, 2010; **Accepted:** May 13, 2010; **Published:** June 8, 2010

Copyright: © 2010 Demetriou et al. This is an open-access article distributed under the terms of the Creative Commons Attribution License, which permits unrestricted use, distribution, and reproduction in any medium, provided the original author and source are credited.

Funding: The project was funded by the University of Cyprus. IK was funded by grants IIENEK/ENISX/0308/15 from the Cyprus Research Promotion. Coordination aspects have been funded by the EuropeHIVResistance grant LSHP-CT-2006-518211 from the European Commission. Additional support was provided by grant KY-IT/0906/04 from the Cyprus Research Promotion Foundation, and for Belgium grants G.0611.09 (Belgian Fonds voor Wetenschappelijk Onderzoek) and P6/41 (Interuniversitaire Attractiepolen). The funders had no role in study design, data collection and analysis, decision to publish, or preparation of the manuscript.

Competing Interests: The authors have declared that no competing interests exist.

* E-mail: lkostrik@ucy.ac.cy

Introduction

The development of antiretroviral therapy to fight HIV-1 infection has led to a significant decrease in mortality and morbidity among infected populations. Nevertheless, the emer-

gence of viral species resistant to drugs presents a major problem in the desired response to therapy. In the past decade, studies have been focusing on the transmission of such species in different parts of the world and it has been estimated that transmitted drug resistance occurs in about 9% of all newly diagnosed HIV-1

patients across Europe, USA and Canada [1,2,3,4,5,6]. Also, transmitted resistance cases are frequently found to be clustered [7,8]. This is probably explained by transmitted cases introduced before HAART became available, continuing to be transmitted today.

Integrated HIV-1 DNA in host genomic DNA acts as a latent reservoir and ensures viral persistence in spite of prolonged antiretroviral therapy [9,10,11,12,13,14,15]. This persistent cellular reservoir can reactivate itself and replenish viral infection, presenting itself as one of the current challenges for the control of HIV-1 infection progression [16,17,18]. Cellular HIV-1 DNA load is a marker associated with the viral reservoir and with the spread of the virus. Studies in patients with primary HIV-1 infection and advanced HIV-1 disease have demonstrated that early levels of HIV-1 DNA load in peripheral blood mononuclear cells (PBMC) and in CD4⁺ T-cells have a predictive value for long-term virological outcome and for disease progression, independently of CD4 counts and plasma viral RNA load [19,20,21,22,23,24,25,26,27,28,29,30,31,32]. Many in-house protocols have been developed for the quantification of cellular HIV-1 DNA in its different forms, including end-point and real-time PCR assays [33]. However, there is still no universal or standardised way to monitor and report HIV-1 DNA quantities.

Here we present an improved method of quantification of cellular HIV-1 DNA levels. We measure the concentration of HIV-1 DNA forms which have undergone the second template switch (STS DNA) in PBMC. This detects a pool of HIV-1 forms that includes integrated and unintegrated linear dsDNA viral genomes and 1- and 2-LTR circles. A cohort of newly-diagnosed patients was studied for genotypic drug resistance, co-receptor tropism and cellular viral DNA load.

Methods

Ethics statement

The present study was performed as part of the EuropeHIV-Resistance network (www.europehivresistance.org), and ethical requirements were fulfilled according to the procedure described in the European Commission contract for EHR (project LHSP-C'T-2006-518211). The procedure differs among the ten countries in the network according to national legislation. Briefly, for each participating hospital or collection centre, approval was obtained by the institutional or national medical ethical review committee and a written informed consent was obtained for each patient. In countries where a mandatory surveillance system was already established, legally no informed consent was needed. All samples were analysed anonymously and coded at national level. The names of the institutional review boards and committees are: the "Commissie voor Medische Ethiek van de faculteit Geneeskunde" associated with University Hospital Gasthuisberg, Leuven, Belgium; the "Dr. Fran Mihaljevic" University Hospital for Infectious Diseases Ethics Committee, Zagreb, Croatia; the Cyprus National Bioethics Committee, Nicosia, Cyprus; the "Videnskabetsetiske Komite for VejleFyns Amter" and "Datatilsynet", Copenhagen, Denmark; the Bioethical Committee of the Medical School, National and Kapodistrian University of Athens, Greece; the Helsinki Committee for Bioethics for Israel; the Ethics Committee for Clinical Trials, 'L. Sacco' Hospital, Milan, Italy; the "Comite National D'Ethique a la Recherche (CNER)", Luxembourg; the Medical Ethics Committee at the Ministry of Health of Slovenia; and "Comité Ético de Investigación Clínica, Hospital Universitari Germans Trias i Pujol", Barcelona, Spain. Approval was not required from an institutional review board for Greece as samples were made anonymous and coded on a national level.

Sample and data collection

Included in this study were samples from 253 newly-diagnosed HIV-1 seropositive individuals from ten countries-members of the EuropeHIVResistance network: Belgium, Croatia, Cyprus, Denmark, Greece, Israel, Italy, Luxembourg, Slovenia and Spain. Sample data were obtained from the database of the E. C.-funded project EuropeHIVResistance [1], which studies the epidemiology of drug resistance among patients newly diagnosed with HIV-1 across Europe [6]. Patients were representative for the risk group and geographical distribution of the national HIV epidemic and were included within six months after diagnosis.

PBMC isolation and genomic DNA extraction

PBMC were isolated from blood samples by one of two methods. Samples from 120 individuals were isolated from blood collected in BD Vacutainer® CPTTM (BD, Franklin Lakes, NJ, USA) tubes according to manufacturer's instructions. Samples from 71 individuals were extracted from blood collected in EDTA tubes by Ficoll density gradient centrifugation (Lymphoprep; Nycomed, Oslo, Norway). CPTTM and Ficoll density gradient separation have been found to perform equivalently in maintaining the quality and function of PBMC from HIV seropositive blood samples [34]. Genomic DNA was extracted from the isolated PBMC using the QIAmp DNA Blood Mini kit (Qiagen, Valencia, CA, USA) and eluted with 100 µl AE buffer following the manufacturer's instructions. DNA quality and quantity was evaluated for all samples by UV spectrophotometry using NanoDrop ND-1000 (NanoDrop Technologies, Wilmington, DE, USA).

Genomic DNA extraction from whole blood

DNA from samples from 62 individuals was extracted from whole blood collected in EDTA tubes. For 15 samples, DNA was isolated from 0.5 ml whole blood using the QIAmp DNA Blood Mini kit (Qiagen) and eluted in 100 µl AE buffer. For 47 samples, DNA was isolated from 0.3 ml whole blood using the High Pure PCR Template Preparation kit (Roche Molecular Diagnostics, Mannheim, Germany), and eluted in 50 µl dH₂O. Due to the production of irregular signals from the real-time PCR, the latter samples were cleaned using the cleaning and elution steps of the QIAmp DNA Blood Mini kit (Qiagen), and eluted in 100 µl AE buffer.

HIV-1 subtyping and determination of drug-resistance

Samples were amplified and sequenced in the *pol* region as described previously [35]. Subtype was determined by uploading the sequences individually into the REGA HIV-1 & 2 Automated Subtyping Tool v2.0 [36]. This was confirmed with phylogenetic analysis by constructing a Neighbour-Joining tree [37] using the Kimura-2-parameter distance estimation approach [38] with MEGA v4 [39]. The reliability of clustering was evaluated using bootstrap analysis with 1,000 replicates [40], where bootstrap values above 70 were considered significant for subtype assignment. Standard reference sequences used in the REGA HIV subtyping tool [36] were downloaded from the website (<http://www.bioafrica.net/rega-genotype/html/subtypinghiv.html>).

Drug resistance in the samples was determined by examination of the PR/RT sequence of each for mutations known to confer resistance to protease and reverse transcriptase inhibitors. This was done by manually examining the sequences and verified automatically using the Stanford drug-resistance algorithm [41,42], as described previously [35]. TDRM have been defined as the presence of at least one of the following mutations in

protease: 30N, 46I/L, 48V, 50L/V, 82A/F/T/S, 84A/C/V, 90M; or RT: 41L, 44D, 62V, 65R, 67N, 69D/insert, 70R, 74V, 75I, 77L, 100I, 103N, 106A/M, 108I, 115F, 116Y, 151M, 181C/I, 184I/V, 188C/H/L, 190A/S, 210W, 215Y/F, 215 revertants A/C/D/E/G/H/I/L/N/S/V, 219Q/E, 225H, 230L, 236L [43].

Comparison of RNA- and DNA-associated *pol* sequences

HIV-1 *pol* nucleotide sequences covering the PR/RT region derived from plasma viral RNA and cellular DNA were compared to determine any correlation between the two. The sequences were examined in the positions known to confer resistance to antiretroviral drugs, in order to establish whether the genotypic drug resistance testing on the two types of sequences resulted in different data.

Determination of co-receptor tropism by HIV-1 V3-loop amplification and sequencing

All samples were amplified by PCR in the V3-loop region with a nested PCR using extracted genomic DNA from the PBMC samples. The primary PCR was performed using 3 µl DNA in a 50 µl reaction using Platinum[®] PCR SuperMix (Invitrogen, Carlsbad, CA, USA) with 20 pmol each of the outer forward (5'-ATGGGATCAAAGCCTAAAGCCATGTG-3', positions 6557-6582) and reverse (5'-AGTGCTTCCTGCTGCTCCCAAGAACCAAG-3', positions 7811-7782) primers. The cycling conditions were one cycle at 94°C for 2 min, 40 cycles at 94°C for 20 s, 55°C for 30 s, 72°C for 30 s, and a final step at 72°C for 7 min. A nested PCR was performed using 3 µl of the primary PCR product with 20 pmol each of the inner forward (5'-CCAATTCCTATACAT-TATTGTGCC-3', positions 6858-6882) and reverse (5'-TTAC-AGTAGAAAAATTCCTCCACAATTTAAA-3', positions 7381-7350) primers in a 50 µl reaction, with the same cycling conditions as above, but with an annealing temperature of 52°C. Cycle sequencing PCR was performed on purified amplicons bidirectionally using the inner forward and reverse amplification primers by means of the BigDye[®] Terminator system v3.1 (Applied Biosystems, Foster City, CA, USA). The products were sequenced directly on the ABI 3300 Genetic Analyser (Applied Biosystems). The resulting readings were analyzed with the Sequencing Analysis Software v5.2 (Applied Biosystems). To determine the co-receptor tropism of the samples,

sequences were uploaded into the geno2pheno [44] and WebPSSM [45,46] automated bioinformatics tools, using default settings.

Cellular HIV-1 STS load in newly-diagnosed, drug-naïve samples

To uniquely detect HIV-1 DNA structures that have completed the two template switches, a molecular-beacon-based real-time PCR assay reported previously [20] has been improved for better compatibility and specificity to the target, by using the general method of quantifying single sequences with nucleotide-specific molecular beacons [47] and real-time PCR [48] as previously described [20,49]. The assay uses primers that amplify a smaller region, from the end of U5 to just before the gag sequence, from position 623 to 788 (numbers according to sequence HXB2). The PCR primers and the target recognition sequence of the molecular beacon were designed to hybridize on conserved regions from all the genetic subtypes within the M group based on a comprehensive DNA sequence alignment from published HIV-1 sequences (Table 1 and Figure 1). This assay detects only HIV-1 DNA structures that have undergone both single stranded DNA template switches, including both unintegrated and integrated linear viral genomes. To confirm the specificity of the design, amplicons were sequenced and found to contain the correct region. To assess the thermodynamic characteristics, the quality and the purity of the molecular beacon, a melting curve analysis was performed by monitoring the fluorescence thermal transition profiles using the 7900HT Real-Time PCR System (Applied Biosystems, Foster City, California, USA). The cycling parameters were as follows: 1 cycle for 2 min at 95°C followed by 50 cycles each consisting of the data collection step for 30 s and a second step for 10 s, starting at 80°C with an auto-incrementation of -1°C per half-minute cycle until 31°C were reached. The reaction consisted of a 25 µl mixture containing 1X Platinum[®] Quantitative PCR Supermix-UDG (Invitrogen, Carlsbad, CA), 5.7 pmol of the beacon probe with or without 100 pmol of a perfectly complementary single-stranded oligonucleotide target. Changes in fluorescence were measured at 490 nm and the data collected at each temperature interval were plotted to form these thermal denaturation profiles and determine the optimal annealing temperature for the real-time PCR reaction.

Table 1. Molecular beacons and primers used in the real-time PCR assay.

| Name | Oligonucleotide | Sequence (5'-3') ^a | Position ^b | Reference |
|--------------|------------------|--|-----------------------|------------------------------------|
| HIV-1 | | | | |
| MB684 | Molecular beacon | FAM- <u>CCGCTGCAAGCCGAGTCCTGCGTCGAGACAGCGG</u> -Dabcyl | 684–705 | Modified from [20] |
| 623 | Forward primer | AAATCTCTAGCAGTGGCGCCCGAA | 623–646 | Modified from [20] |
| 788 | Reverse primer | TCTCTCCTTCTAGCCTCCGCTAGT | 765–788 | Modified from [20] |
| CCR5 | | | | |
| LK155 | Molecular beacon | TET- <u>GCGCCTATGACAAGCAGCGGAGGCGC</u> -Dabcyl | 623–641 | Kostrikis et al., unpublished data |
| LK46 | Forward primer | GCTGTGTTTGCCTCTCTCCAGGA | 478–501 | Kostrikis et al., unpublished data |
| LK47.new | Reverse primer | CACAGCCCTGTGCTCTTCTCTCA | 690–713 | Kostrikis et al., unpublished data |

^aFAM, fluorescein; TET, Tetrachloro-6'-carboxyfluorescein; Dabcyl, 4-(4'-dimethylamino phenylazo)benzoic acid; underlined sequences indicate the complementary sequences forming the molecular beacon hairpin structures.

^bPositions correspond to the GenBank sequences K03455 and U83326.1 for HIV-1 and CCR5, respectively. For molecular beacons, the nucleotide positions correspond to the target recognition sequences (non-underlined sequences).

doi:10.1371/journal.pone.0010976.t001

Assay design for quantification of human *CCR5* alleles

To quantify the number of cells in the input DNA, a molecular-beacon-based real-time PCR assay was used for the detection of *CCR5* alleles. The design was based on a previously published protocol [20] and is an improved version for the quantification of a region of the human *CCR5* gene adjacent to the *A32* deletion, which exists at two copies per cell (L. G. Kostrikis, unpublished data), allowing the quantification of genomic equivalents in a given sample. The PCR primers and the target recognition sequence of the molecular beacon are listed in Table 1. A thermal denaturation curve was constructed as described above, with 6.5 pmol of the *CCR5*-specific molecular beacon.

CCR5 and HIV-1 standards and standard curves

Cloned plasmids containing within them the targeted HIV-1 DNA and *CCR5* amplicons of the real-time PCR assays were used as external quantification standards in the experiments. The amplicons were cloned into plasmids (TOPO TA Cloning® Kit, pCR 4-TOPO vector, Invitrogen, Carlsbad, CA, USA) following PCR with the primers seen in Table 1. Five clones of each were selected and sequenced on the ABI 3130 Genetic Analyzer (Applied Biosystems, Foster City, CA, USA) using the vector primers available from the cloning kit (Invitrogen) as sequencing primers, to ensure correct insertion of the amplicons into the plasmids. Concentrations were measured by UV absorbance using a NanoDrop 1000 spectrophotometer (NanoDrop Technologies, Wilmington, DE, USA) and the copy number per unit volume was calculated. Tenfold serial dilutions of the purified plasmids of known molar concentrations were used as templates to generate standard curves in the selective amplification assays. Standard curves were made by plotting the threshold cycle of known *CCR5* and HIV-1 copies per reaction. The slope and correlation coefficient of each standard curve were calculated based on the median threshold cycle (C_T) values measured for replicates of each dilution point ranging from 10^6 to 10^1 DNA templates. The PCR efficiency, E , corresponding to the experimentally derived dynamic range was computed as $(10^{-1/s} - 1) \times 100$, where s is the slope of the standard curve generated.

For the real-time PCR reaction, each 25 μ l reaction mixture contained 5 μ l of extracted genomic DNA, 20 pmol each of forward and reverse primer, 1X Platinum® qPCR Supermix-UDG (Invitrogen, Carlsbad, CA, USA). For the *CCR5* reaction, 6.5 pmol of beacon LK155 were used and in the HIV-1 reaction, 5.7 pmol of beacon MB684. The cycling conditions were the same for the two reactions and are as follows: one cycle of denaturation (95°C for 10 min), followed by 50 cycles of amplification (denaturation at 95°C for 15 s, annealing and data collection at 55°C for 30 s, and polymerization at 72°C for 30 s), performed on the 7900HT Real-Time PCR System (Applied Biosystems, Foster City, CA, USA). During the data-collection stage of each cycle, fluorescence emission was recorded at 490 nm.

Quantification of cellular HIV-1 STS DNA in newly-diagnosed, drug-naïve samples

Two uniplex molecular beacon-based real-time assays were carried out in triplicate for absolute quantification of *CCR5* copies and HIV-1 STS DNA copies in clinical samples, as described above for the standards. In each experiment, standard curves for HIV-1 and human *CCR5* templates were also run in triplicate by using six serial dilutions, ranging from 10^6 to 10^1 copies, along with no-template negative controls. Each experiment was assessed by the quality of its standard curves, i.e. slope, R^2 -value and y-intercept. *CCR5* and HIV-1 copies in each sample were

quantified by use of the obtained threshold values from the samples and the corresponding standard curve, constructed from multiple measurements of standards. In each sample, the number of cells was quantified as one cell per two *CCR5* copies, and the HIV-1 STS DNA levels were calculated per 10^6 PBMC. The cellular viral load of a sample is, therefore, the number of HIV-1 copies per million cells.

For samples whose DNA was extracted from whole blood, HIV-1 STS DNA was quantified per ml blood and *CCR5* measurements were not made, as whole blood contains many cell types, and not only PBMC. Hence, HIV-1 STS DNA load in samples obtained from whole blood are not comparable to samples extracted from PBMC.

Statistical analysis

Viral loads were log-transformed. The cellular viral load was compared between patients infected with or without a drug resistant virus using the Mann-Whitney test. Categorical variables were compared using chi-square test. To determine whether a differential cellular viral load was observed between subtypes a Kruskal-Wallis test was performed. The 95% confidence interval of the prevalence of transmitted resistance was calculated using the Wilson score interval. The association between the plasma viral load and the cellular viral load was determined using Pearson's correlation coefficient.

Results

Description of the population

Available were 191 PBMC samples from HIV-1 infected individuals from eight country-members of the EuropeHIVResistance network. A total of 30 samples were excluded from the analysis due to failure of PCR in the *pol* region ($n=18$), or a polymorphic nature of the sequence ($n=12$), and drug-resistance could therefore not be determined. Table 2 lists the baseline characteristics of the 161 study subjects that were included in the analysis. The median age of the participants was 34 (interquartile range IQR 29–42) and they were predominantly male (72.0%), a fact also reflected by a large proportion of MSM (50.3%). The median \log_{10} plasma RNA load in the samples studied was 4.43 copies per ml (IQR 3.87–5.14) and the median CD4⁺ T-cell count was 423 per ml (IQR 255.3–578.5).

HIV-1 subtyping, drug-resistance and co-receptor tropism

HIV-1 subtype was determined using the *pol* sequences obtained above using REGA [36] and by phylogenetic analysis. The results are listed in Table 2 and the phylogenetic tree is seen in Figure 2. The most frequently observed subtype was B (64%), followed by A (14.3%) and C (8.7%). Interestingly, cases of complex recombinants (C/H/K, CRF2/B) were also present in the dataset. Sequences of all samples were examined for known resistance mutations to available protease and reverse transcriptase inhibitors. Transmitted resistance in the form of major drug resistant mutations was observed in 11.7% (95% confidence interval 7.6 to 17.6%) of the samples.

All samples were sequenced in the V3-loop and tropism was determined by the geno2pheno and WebPSSM automated bioinformatics tools. The majority of samples were *CCR5*-tropic (147 samples, 91.3%), and the rest were CXCR4-tropic (5 samples, 3.1%) or a mixture of *CCR5* and CXCR4 (7 samples, 4.3%). Two samples (1.2%) could not be determined due to the polymorphic nature of the V3-loop sequence. None of the five CXCR4-tropic samples displayed genotypic drug-resistance, but

Table 2. Characteristics of study subjects.

| Characteristics ^a | Subjects N = 161 (%) |
|---|----------------------|
| Sampling country | |
| Belgium | 18 (11.2) |
| Croatia | 5 (3.1) |
| Cyprus | 40 (24.8) |
| Greece | 8 (5.0) |
| Israel | 18 (11.2) |
| Luxembourg | 42 (26.1) |
| Slovenia | 21 (13.0) |
| Spain | 9 (5.6) |
| Year of sampling | |
| 2002 | 6 (3.7) |
| 2003 | 31 (19.3) |
| 2004 | 12 (7.5) |
| 2005 | 38 (23.6) |
| 2006 | 27 (16.8) |
| 2007 | 17 (10.6) |
| 2008 | 30 (18.6) |
| Resistance characteristics | |
| Resistant to PI | 4 (2.5) |
| Resistant to RTI | 15 (9.3) |
| No resistance | 142 (88.2) |
| Gender | |
| Male | 116 (72.0) |
| Female | 28 (17.4) |
| Unknown | 17 (10.6) |
| Risk group | |
| MSM | 81 (50.3) |
| Heterosexual | 43 (26.7) |
| IVDU | 4 (0.2) |
| Unknown | 33 (18.2) |
| Age (median, IQR) ^b | 34 (29–41.5) |
| Log₁₀ cellular HIV-1 DNA load (median, IQR) | 3.32 (2.92–3.75) |
| Log₁₀ plasma RNA load (median, IQR) | 4.43 (3.87–5.14) |
| CD4⁺ count (median, IQR) | 423 (255.3–578.5) |
| Subtype | |
| A | 23 (14.3) |
| B | 103 (64.0) |
| C | 14 (8.7) |
| D | 1 (0.6) |
| F1 | 1 (0.6) |
| G | 7 (4.3) |
| CRF02_AG | 6 (3.7) |
| CRF01_AE | 4 (2.5) |
| C/H/K | 1 (0.6) |
| CRF02_B | 1 (0.6) |
| Tropism | |
| CCR5 | 147 (91.3) |
| CXCR4 | 5 (3.1) |

Table 2. Cont.

| Characteristics ^a | Subjects N = 161 (%) |
|------------------------------|----------------------|
| CXCR4/CCR5 | 7 (4.3) |
| N/A | 2 (1.2) |

^aIQR, interquartile range.^bData available for 130 patients.

doi:10.1371/journal.pone.0010976.t002

three of the mixed-tropism samples did. The rest of the drug-resistant samples were purely CCR5-tropic.

Comparison of RNA- and DNA-associated *pol* sequences

Known positions conferring resistance to antiretroviral therapy from HIV-1 *pol* nucleotide sequences covering the PR/RT region derived from plasma viral RNA and cellular DNA were compared for each sample, to determine any correlation between the two. The comparison showed that there is a high similarity between the two types of sequences.

Characteristics of the real-time PCR assay for quantification of HIV-1 STS DNA in PBMC

Thermal denaturation profiles of both molecular beacons were constructed as described in Materials and Methods and are seen in Figure 3. The optimum concentrations of the molecular beacons were determined, as was the optimum temperature for annealing and data collection in the PCR reactions (55°C). The HIV-1 STS DNA and CCR5 assays' specificity was established by accurate detection of 10 DNA copies with a 6-log₁₀ linear dynamic range. The slopes of the standard curves (Figure 3) were -3.3 cycles/log₁₀ DNA templates for both assays, corresponding to PCR efficiencies of >99%. The capability of the STS DNA assay to detect HIV-1 strains within the M group was evaluated by using DNA extracted from primary PBMC samples isolated from patients infected with HIV-1 strains from genetic subtypes A, B, C, D, F1 and G and recombinant strains A/G, C/H/K, CRF01_AE, CRF02_AG and CRF02/B. The specificity of the STS DNA assay against human genomic DNA were examined using DNA extracted from individuals not infected with HIV-1; the results were negative, with no detection after 50 PCR cycles (data not shown).

Cellular HIV-1 STS load in newly-diagnosed drug-naïve samples

The DNA samples extracted from whole blood produced very low proportion of detectable HIV-1 DNA levels (data not shown), due to the fact that whole blood contains many cell types, and were not used in the analysis. The values of cellular HIV-1 STS DNA loads in 191 samples extracted from PBMC of newly-diagnosed individuals from eight European countries were measured using molecular beacon-based real-time PCR assays quantifying HIV-1 STS DNA and human CCR5 copies per sample. The cellular HIV-1 STS DNA load was calculated as HIV-1 STS DNA copies per million cells and the median log₁₀ value measured was 3.32 (IQR 2.92–3.75 log₁₀ copies/10⁶ PBMC) (Figure 4A). These values were investigated according to the various known parameters of the samples.

The relationship between the cellular HIV-1 DNA loads measured in this study and other clinical parameters and characteristics of the samples at the time of sampling were also investigated. The results show that the cellular HIV-1 STS levels have a weak correlation with the corresponding plasma RNA

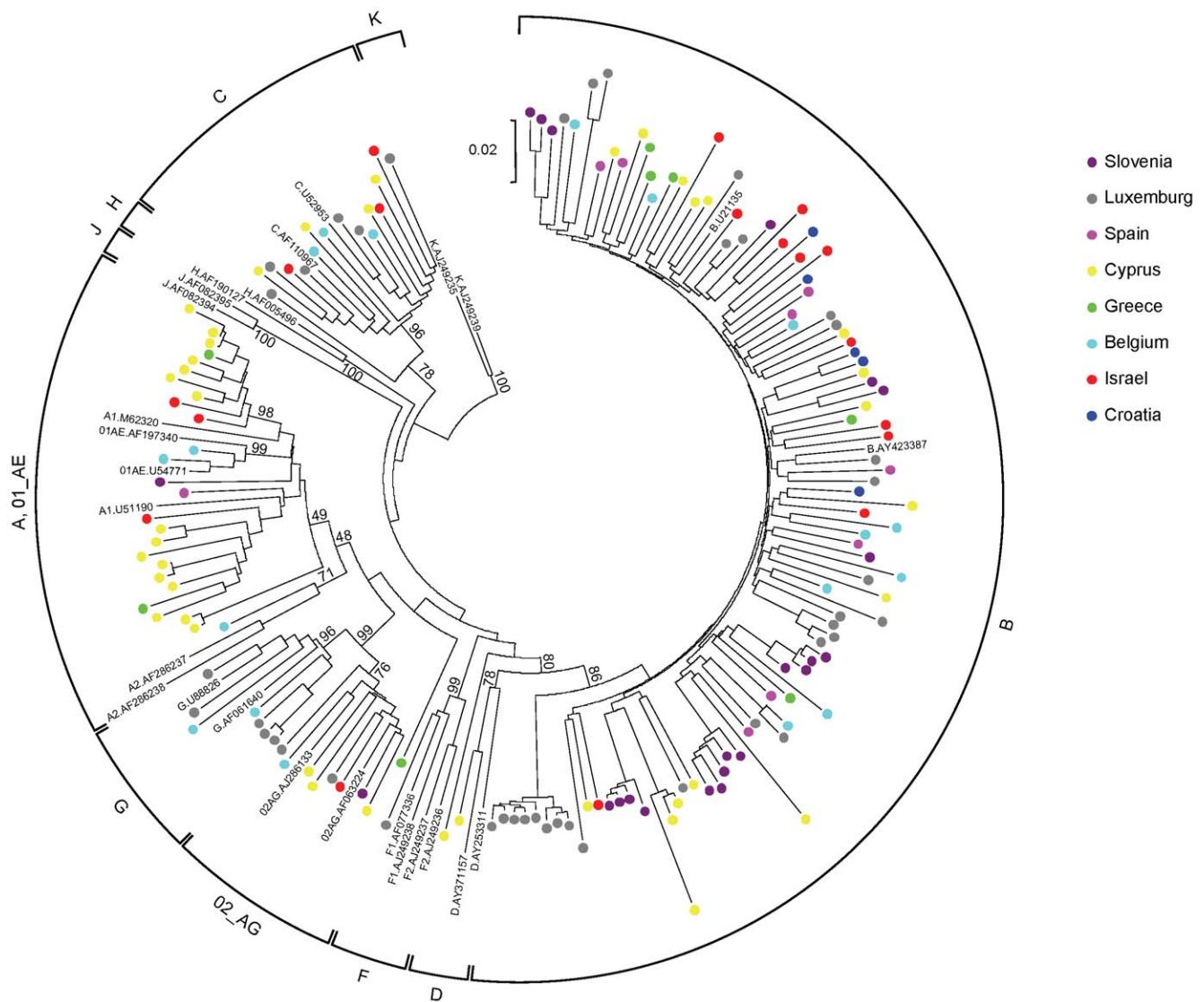


Figure 2. Phylogenetic tree of the samples used in the study. Neighbour-joining phylogenetic tree for the 161 HIV-1 *pol* sequences (1233 nucleotides, corresponding to positions 2253–3485 of HXB2). Trees were constructed using 48 representative reference sequences from 9 known subtypes (A through F) and 13 known recombinant strains. The sequences determined in the study are colour-coded, with colours corresponding to the country of sampling: Belgium (light blue), Croatia (dark blue), Cyprus (yellow), Greece (green), Israel (red), Luxemburg (grey), Slovenia (purple), Spain (pink). The divergence between any two sequences is obtained by summing the branch length, using the scale at the lower left of each tree. The numbers indicated at the subtype-determining nodes are percentage bootstrap support for 1,000 replicates. doi:10.1371/journal.pone.0010976.g002

levels (Pearson correlation coefficient $R^2 = 0.20$; $P = 0.001$) and a very weak correlation with $CD4^+$ T-cell counts (Pearson correlation coefficient $R^2 = 0.04$; $P = 0.013$) (Figure 4B and C), confirming previously acquired data [20]. For statistical reasons, the analysis regarding subtypes was limited to the three most frequently observed subtypes, A, B and C. The median cellular HIV-1 DNA load was different in the three groups (2.91, 3.26 and 3.56 \log_{10} copies/ 10^6 PBMC respectively), but this difference did not reach statistical significance ($P = 0.40$).

Figure 5 shows the comparison of the cellular HIV-1 DNA loads for patients infected with drug-resistant or non-resistant strains of the virus. The results indicate a trend towards a higher cellular HIV-1 DNA load in patients with transmitted drug-resistant strains of the virus (3.64 \log_{10} copies/ 10^6 PBMC, IQR 2.63–4.25) than in patients infected with wild-type strains (3.27 \log_{10} copies/ 10^6 PBMC, IQR 2.90–3.73). This difference did,

however, not reach statistical significance ($P = 0.14$). The possibility of higher cellular viral loads being explained by more recent infections in the resistance group was investigated but the proportions of recent infections in patients with or without evidence of transmitted resistant strains was (3/22) 13.6% and (10/66) 15.2% respectively ($P = 1.00$), meaning this was not the case.

Discussion

In this study the association between cellular HIV-1 DNA load and transmitted drug resistance was examined for the first time, using an improved molecular beacon-based real-time PCR assay for quantification of HIV-1 STS DNA and human *CCR5* alleles. The median cellular HIV-1 STS DNA load calculated in this study is 3.32 \log_{10} copies per 10^6 PBMC. The results of this study

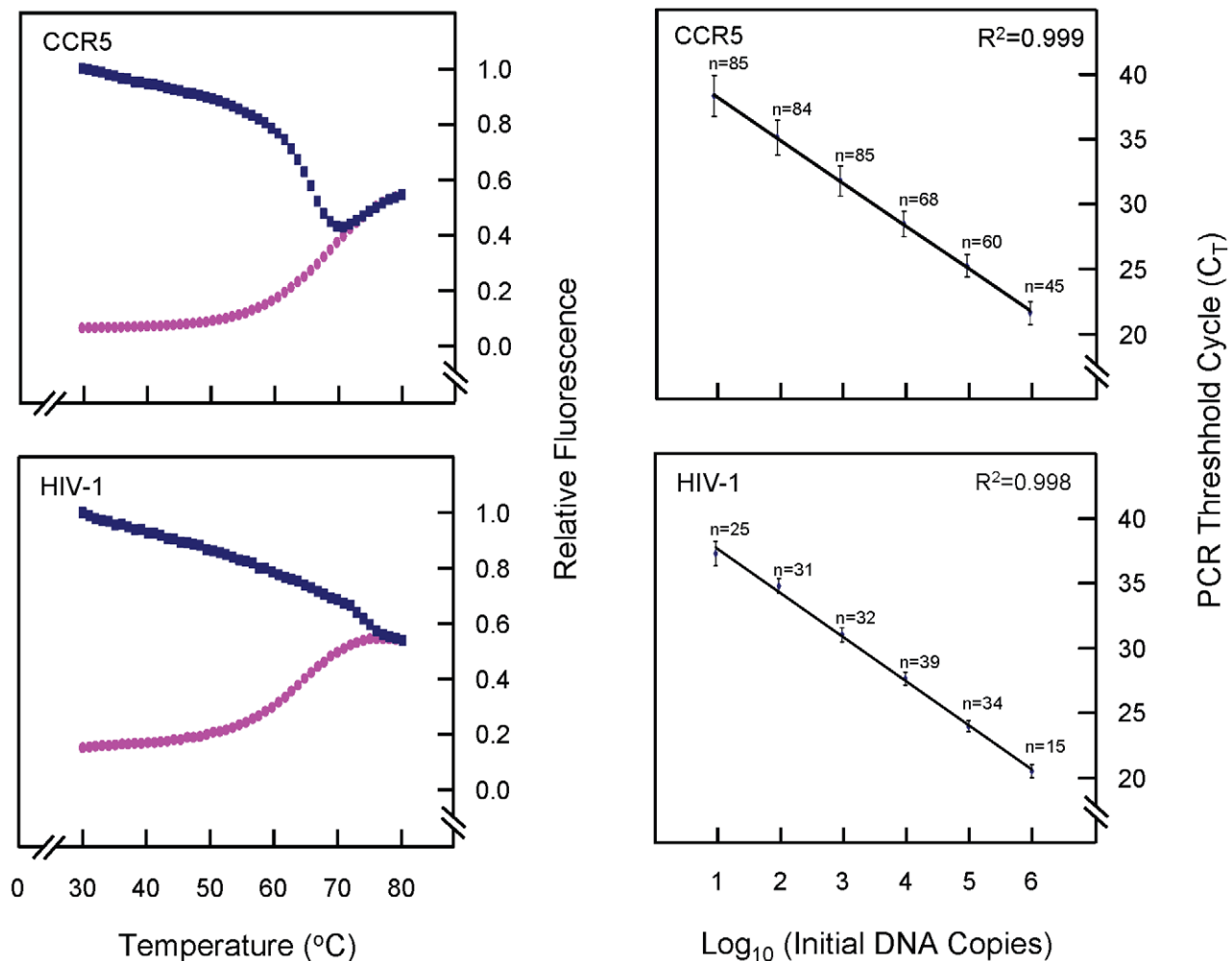


Figure 3. Thermal denaturation curves of the molecular beacons and standard curves for quantification. On the left are normalised fluorescence thermal transitions of molecular beacon (pink circles) and beacon-target complexes (blue squares) designed for the detection of the human *CCR5* gene and HIV-1 STS DNA. Fluorescence signals differ between the complementary molecular-beacon-target hybrids and the non-hybridized molecular beacon at temperatures below 60°C. At higher temperatures, secondary structures within and between oligonucleotides are denatured and the beacon is free in solution in a dynamic open conformation. The temperature selected (55°C) for hybridisation in the standard PCR reactions allows optimal resolution of the fluorescence signal. On the right are standard curves for human *CCR5* and HIV-1 STS DNA templates used in the real-time PCR assays for quantifying HIV-1 STS DNA in human PBMC. Six serial dilutions ranging from 10^6 to 10^1 DNA templates were made for each DNA standard, and all standard dilutions were measured by real-time PCR using nucleotide sequence-specific molecular beacons. Median C_T values (\pm standard deviations) were measured for a number of replicates for each dilution point, indicated on the standard curves. The correlation coefficients (R^2) of the standard curves were >0.99 , and the PCR efficiencies were $>99\%$. doi:10.1371/journal.pone.0010976.g003

indicate no statistically significant difference in cellular HIV-1 DNA load in patients with transmitted drug-resistant strains of the virus compared to that of patients infected with wild-type strains. The cellular viral DNA levels found here are higher than those quantified with the previous version of the assay [20] ($P < 0.001$) due to the improvement of the specificity of the *CCR5* components. This study includes a significant number of patients from Israel and countries distributed throughout Europe. The criteria of inclusion, the well-defined datasets and the consistent sampling method are encouraging parameters supporting the strength of this report. The results found are comparable to those found in previous studies of cellular HIV-1 DNA quantification in treatment-naïve patients where levels of $2.85\text{--}3.2 \log_{10}$ copies/ 10^6 PBMC were reported [19,21,29,50,51]. The findings of this study also indicate a weak association between the cellular HIV-1 DNA counts and viral RNA levels or $CD4^+$ T-cell counts, in agreement

with previous findings [20,50,52]. The three main subtypes also appeared not to have an impact on cellular viral DNA load.

Positions known to confer resistance to antiretroviral drugs in plasma RNA- and cellular DNA-derived nucleotide sequences covering the PR/RT region were compared for each patient in order to assess the level of similarity between them. Significantly, a high similarity was found between the two, suggesting that genotypic drug-resistance testing could be carried out on either starting material.

The co-receptor tropism of all samples was determined from the cellular DNA and it was found that 91% of the samples were *CCR5*-tropic, as expected for early infections, 3% were *CXCR4*-tropic and 4% were a mixture of the two types. Hence, it appears that, the existence of transmitted drug resistance mutations does not affect the co-receptor tropism of the virus. This data suggests that resistant and susceptible viral species behave similarly in early infection.

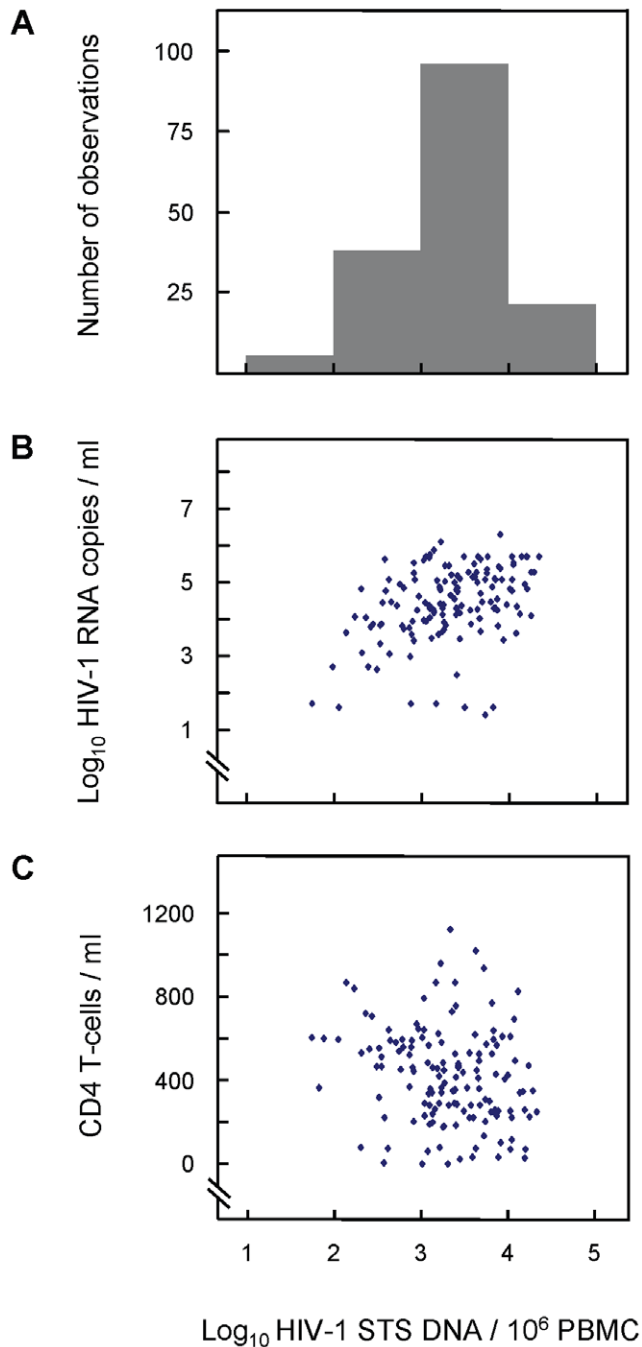


Figure 4. Cellular HIV-1 STS DNA load against plasma HIV-1 RNA load and CD4⁺ T-cell count. Distribution of cellular HIV-1 STS DNA load (A), plasma HIV-1 RNA load (B) and CD4⁺ T-cell counts (C) among 161, 109 and 161 newly-diagnosed individuals, respectively. The results indicate a weak correlation between STS DNA levels and plasma RNA levels ($R^2=0.20$; $P=0.001$) and a very weak correlation between STS DNA levels and CD4⁺ counts ($R^2=0.04$; $P<0.001$). doi:10.1371/journal.pone.0010976.g004

A limitation to the study is the possibility of the occurrence of reversion of viral strains to wild-type in those samples considered non-resistant, as this may play a role on cellular viral DNA load as minority species in the viral population. Nonetheless, reversion only appears to occur to a limited extent [53]. Another factor that may influence such findings is the fact that known mutations that confer resistance to antiretroviral drugs are heterogeneous and

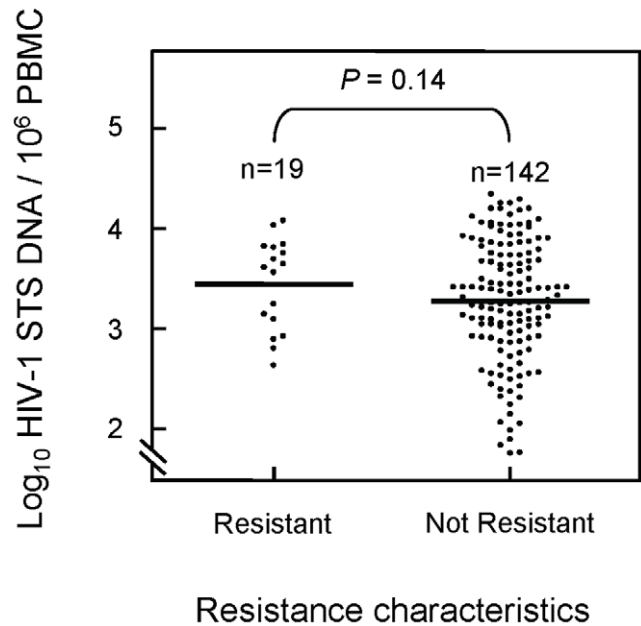


Figure 5. Cellular HIV-1 DNA load in drug-resistant and non-resistant samples. Dot plot of \log_{10} cellular HIV-1 STS DNA load per million PBMC among 161 newly-diagnosed individuals with major drug-resistant mutations ($n=19$) and with no major drug-resistant mutations ($n=142$). The results indicate a trend towards higher cellular HIV-1 STS DNA load ($P=0.14$) in resistant samples (median 3.64, IQR 2.63–4.25) compared to non-resistant samples (median 3.27, IQR 2.90–3.73). doi:10.1371/journal.pone.0010976.g005

may have differential impact of resistance. The study of different TDRM individually, however, is not possible with the datasets currently available. Also, mutations associated with reduced viral fitness, and therefore lower viral loads, are not found frequently in transmitted resistant strains due to the fact that the level of plasma viral load is a key factor in the transmission of the virus [54]. Another point is the possibility of the inclusion of patients who are in the acute phase of infection at the time of sampling, who may account for values on the high end of the range of HIV cellular DNA levels obtained in this study.

The results show for the first time that there is no association between cellular viral DNA levels and the existence of transmitted drug resistant mutations in newly-diagnosed patients. Cellular HIV-1 DNA load has been shown to be associated with disease progression [19,20,21,23,24,26,29,30,32] and transmitted drug resistance does not currently have an impact on the time of treatment initiation. From this data, it is implied that transmitted drug resistance is not associated with disease progression.

Overall, this report presents an improved methodology of cellular HIV-1 DNA quantification with molecular beacon-based real-time PCR. The patients included in the study were newly-diagnosed individuals from Israel and all over Europe. The data show a similar co-receptor tropism for resistant and non-resistant viral species, implying that both behave in a similar manner in early infection. Significantly, a high correlation was found between RNA- and DNA-associated PR/RT sequencing indicating that genotypic drug resistance testing could be carried out on either type of sample. It was found that no correlation exists between cellular HIV-1 DNA levels and transmitted drug resistance, indicating that the latter may not be associated with disease progression and should continue not having an impact on the time to initiate treatment in patients.

Acknowledgments

The authors thank Johana Hezka, and Sarah Gilliland, Laboratory of Biotechnology and Molecular Virology, Department of Biological Sciences, University of Cyprus, for their technical assistance; Eric Van Wijngaerden, Department of Internal Medicine, University Hospital Gasthuisberg, Leuven, Belgium and Ioannis Demetriades, National Reference Clinic for AIDS, Larnaca General Hospital, Larnaca, Cyprus for their assistance in sample collection; Daniel Struck, Retrovirology Laboratory, National Service of Infectious Diseases, Luxembourg, for his administrative assistance; Charles Boucher, Erasmus MC, University Medical Centre, Rotterdam, the Netherlands and Annemarie Wensing, University Medical Centre Utrecht, the Netherlands, for their coordination assistance.

References

- SPREAD programme (2008) Transmission of drug-resistant HIV-1 in Europe remains limited to single classes. *AIDS* 22: 625–635.
- Leigh Brown AJ, Frost SD, Mathews WC, Dawson K, Hellmann NS, et al. (2003) Transmission fitness of drug-resistant human immunodeficiency virus and the prevalence of resistance in the antiretroviral-treated population. *J Infect Dis* 187: 683–686.
- Kozal MJ, Amico KR, Chiarella J, Schreiber T, Cornman D, et al. (2004) Antiretroviral resistance and high-risk transmission behavior among HIV-positive patients in clinical care. *Aids* 18: 2185–2189.
- Descamps D, Chaix ML, Andre P, Brodard V, Cottalorda J, et al. (2005) French national sentinel survey of antiretroviral drug resistance in patients with HIV-1 primary infection and in antiretroviral-naïve chronically infected patients in 2001–2002. *J Acquir Immune Defic Syndr* 38: 545–552.
- Weinstock HS, Zaidi I, Hencine W, Bennett D, Garcia-Lerma JG, et al. (2004) The epidemiology of antiretroviral drug resistance among drug-naïve HIV-1-infected persons in 10 US cities. *J Infect Dis* 189: 2174–2180.
- Vercauteren J, Wensing AM, van de Vijver DA, Albert J, Balotta C, et al. (2009) Transmission of drug-resistant HIV-1 is stabilizing in Europe. *J Infect Dis* 200: 1503–1508.
- Brenner BG, Roger M, Moisi DD, Oliveira M, Hardy I, et al. (2008) Transmission networks of drug resistance acquired in primary/early stage HIV infection. *Aids* 22: 2509–2515.
- Yerly S, Vora S, Rizzardi P, Chave JP, Vernazza PL, et al. (2001) Acute HIV infection: impact on the spread of HIV and transmission of drug resistance. *Aids* 15: 2287–2292.
- Finzi D, Hermankova M, Pierson T, Carruth LM, Buck C, et al. (1997) Identification of a reservoir for HIV-1 in patients on highly active antiretroviral therapy. *Science* 278: 1295–1300.
- Finzi D, Blankson J, Siliciano JD, Margolick JB, Chadwick K, et al. (1999) Latent infection of CD4+ T cells provides a mechanism for lifelong persistence of HIV-1, even in patients on effective combination therapy. *Nat Med* 5: 512–517.
- Sedaghat AR, Siliciano RF, Wilke CO (2008) Low-level HIV-1 replication and the dynamics of the resting CD4+ T cell reservoir for HIV-1 in the setting of HAART. *BMC Infect Dis* 8: 2.
- Chun TW, Justement JS, Moir S, Hallahan CW, Maenza J, et al. (2007) Decay of the HIV reservoir in patients receiving antiretroviral therapy for extended periods: implications for eradication of virus. *J Infect Dis* 195: 1762–1764.
- Strain MC, Gunthard HF, Havlir DV, Ignacio CC, Smith DM, et al. (2003) Heterogeneous clearance rates of long-lived lymphocytes infected with HIV: intrinsic stability predicts lifelong persistence. *Proc Natl Acad Sci U S A* 100: 4819–4824.
- Strain MC, Little SJ, Daar ES, Havlir DV, Gunthard HF, et al. (2005) Effect of treatment, during primary infection, on establishment and clearance of cellular reservoirs of HIV-1. *J Infect Dis* 191: 1410–1418.
- Siliciano JD, Kajdas J, Finzi D, Quinn TC, Chadwick K, et al. (2003) Long-term follow-up studies confirm the stability of the latent reservoir for HIV-1 in resting CD4+ T cells. *Nat Med* 9: 727–728.
- Blankson JN, Persaud D, Siliciano RF (2002) The challenge of viral reservoirs in HIV-1 infection. *Annu Rev Med* 53: 557–593.
- Alexaki A, Liu Y, Wigdahl B (2008) Cellular reservoirs of HIV-1 and their role in viral persistence. *Curr HIV Res* 6: 388–400.
- Pierson T, McArthur J, Siliciano RF (2000) Reservoirs for HIV-1: mechanisms for viral persistence in the presence of antiviral immune responses and antiretroviral therapy. *Annu Rev Immunol* 18: 665–708.
- Avettand-Fenoel V, Boufassa F, Galimand J, Meyer L, Rouzioux C (2008) HIV-1 DNA for the measurement of the HIV reservoir is predictive of disease progression in seroconverters whatever the mode of result expression is. *J Clin Virol* 42: 399–404.
- Kostrikis LG, Touloumi G, Karanickolas R, Pantazis N, Anastassopoulou C, et al. (2002) Quantitation of human immunodeficiency virus type 1 DNA forms with the second template switch in peripheral blood cells predicts disease progression independently of plasma RNA load. *J Virol* 76: 10099–10108.
- Goujard C, Bonarek M, Meyer L, Bonnet F, Chaix ML, et al. (2006) CD4 cell count and HIV DNA level are independent predictors of disease progression

Author Contributions

Conceived and designed the experiments: LGK. Performed the experiments: VLD IK CB BC ZG LBJ SZL IL CN DP MP FR LR JCS AMV KVL LGK. Analyzed the data: VLD DAMCvdV IK CB BC ZG LBJ SZL IL CN DP MP FR LR JCS AMV KVL JV LGK. Contributed reagents/materials/analysis tools: CB BC ZG LBJ SZL IL CN DP MP FR LR JCS AMV KVL JV LGK. Wrote the paper: VLD DAMCvdV LGK. Helped with coordination of the project and assisted in setting up the real-time assay: VLD. Statistical analysis and interpretation of results: DAMCvdV. Data collection and manuscript preparation: IK. Organisation of sampling, sample preparation, and data collection: CB BC ZG LBJ SZL IL CN DP MP FR LR JCS AMV KVL. Organisation of data collection and contribution: JV. Devised original hypothesis: LGK. Coordinated the study: LGK.

- after primary HIV type 1 infection in untreated patients. *Clin Infect Dis* 42: 709–715.
- Ferre F, Moss RB, Daigle A, Richieri SP, Jensen F, et al. (1995) Viral load in peripheral blood mononuclear cells as surrogate for clinical progression. *J Acquir Immune Defic Syndr Hum Retrovirol* 10 Suppl 2: S51–56.
- Verhofstede C, Reniers S, Van Wanzele F, Plum J (1994) Evaluation of proviral copy number and plasma RNA level as early indicators of progression in HIV-1 infection: correlation with virological and immunological markers of disease. *Aids* 8: 1421–1427.
- Russell RR, Bowmer MI, Nguyen C, Grant MD (2001) HIV-1 DNA burden in peripheral blood CD4+ cells influences disease progression, antiretroviral efficacy, and CD4+ T-cell restoration. *Viral Immunol* 14: 379–389.
- Re MC, Vitone F, Bon I, Schiavone P, Gibellini D (2006) Meaning of DNA detection during the follow-up of HIV-1 infected patients: a brief review. *New Microbiol* 29: 81–88.
- Saitoh A, Hsia K, Fenton T, Powell CA, Christopherson C, et al. (2002) Persistence of human immunodeficiency virus (HIV) type 1 DNA in peripheral blood despite prolonged suppression of plasma HIV-1 RNA in children. *J Infect Dis* 185: 1409–1416.
- Hatzakis AE, Touloumi G, Pantazis N, Anastassopoulou CG, Katsarou O, et al. (2004) Cellular HIV-1 DNA load predicts HIV-RNA rebound and the outcome of highly active antiretroviral therapy. *Aids* 18: 2261–2267.
- Ngo-Giang-Huong N, Deveau C, Da Silva I, Pellegrin I, Venet A, et al. (2001) Proviral HIV-1 DNA in subjects followed since primary HIV-1 infection who suppress plasma viral load after one year of highly active antiretroviral therapy. *Aids* 15: 665–673.
- Rouzioux C, Hubert JB, Burgard M, Deveau C, Goujard C, et al. (2005) Early levels of HIV-1 DNA in peripheral blood mononuclear cells are predictive of disease progression independently of HIV-1 RNA levels and CD4+ T cell counts. *J Infect Dis* 192: 46–55.
- Tierney C, Lathey JL, Christopherson C, Bettendorf DM, D'Aquila RT, et al. (2003) Prognostic value of baseline human immunodeficiency virus type 1 DNA measurement for disease progression in patients receiving nucleoside therapy. *J Infect Dis* 187: 144–148.
- Re MC, Vitone F, Biagetti C, Schiavone P, Alessandrini F, et al. (2009) HIV-1 DNA proviral load in treated and untreated HIV-1 seropositive patients. *Clin Microbiol Infect*.
- Viard JP, Burgard M, Hubert JB, Aaron L, Rabian C, et al. (2004) Impact of 5 years of maximally successful highly active antiretroviral therapy on CD4 cell count and HIV-1 DNA level. *Aids* 18: 45–49.
- Beloukas A, Paraskevis D, Psychogiou M, Hatzakis A (2009) The role of HIV-1 DNA as an additional marker of HIV-1 infection. *Curr HIV Res* 7: 255–265.
- Ruitenbergh JJ, Mulder CB, Maino VC, Landay AL, Ghanekar SA (2006) VACUTAINER CPT and Ficoll density gradient separation perform equivalently in maintaining the quality and function of PBMC from HIV seropositive blood samples. *BMC Immunol* 7: 11.
- Kousiappa I, van de Vijver DA, Demetriades I, Kostrikis LG (2009) Genetic analysis of HIV type 1 strains from newly infected untreated patients in Cyprus: high genetic diversity and low prevalence of drug resistance. *AIDS Res Hum Retroviruses* 25: 23–35.
- de Oliveira T, Deforche K, Cassol S, Salminen M, Paraskevis D, et al. (2005) An automated genotyping system for analysis of HIV-1 and other microbial sequences. *Bioinformatics* 21: 3797–3800.
- Saitoh N, Nei M (1987) The neighbor-joining method: a new method for reconstructing phylogenetic trees. *Mol Biol Evol* 4: 406–425.
- Kimura M (1980) A simple method for estimating evolutionary rates of base substitutions through comparative studies of nucleotide sequences. *J Mol Evol* 16: 111–120.
- Tamura K, Dudley J, Nei M, Kumar S (2007) MEGA4: Molecular Evolutionary Genetics Analysis (MEGA) software version 4.0. *Mol Biol Evol* 24: 1596–1599.
- Felsenstein J (1985) Confidence limits on phylogenies: an approach using the bootstrap. *Evolution* 39: 783–791.
- <http://hivdb.stanford.edu> (2009) Stanford HIV Resistance Database: Genotypic resistance interpretation algorithm (HIVdb Program: Sequence analysis).

42. Rhee SY, Gonzales MJ, Kantor R, Betts BJ, Ravela J, et al. (2003) Human immunodeficiency virus reverse transcriptase and protease sequence database. *Nucleic Acids Res* 31: 298–303.
43. Johnson VA, Brun-Vezinet F, Clotet B, Gunthard HF, Kuritzkes DR, et al. (2008) Update of the Drug Resistance Mutations in HIV-1. *Top HIV Med* 16: 138–145.
44. Sing T, Low AJ, Beerenwinkel N, Sander O, Cheung PK, et al. (2007) Predicting HIV coreceptor usage on the basis of genetic and clinical covariates. *Antivir Ther* 12: 1097–1106.
45. Jensen MA, Coetzer M, van 't Wout AB, Morris L, Mullins JI (2006) A reliable phenotype predictor for human immunodeficiency virus type 1 subtype C based on envelope V3 sequences. *J Virol* 80: 4698–4704.
46. Jensen MA, Li FS, van 't Wout AB, Nickle DC, Shriner D, et al. (2003) Improved coreceptor usage prediction and genotypic monitoring of R5-to-X4 transition by motif analysis of human immunodeficiency virus type 1 env V3 loop sequences. *J Virol* 77: 13376–13388.
47. Tyagi S, Kramer FR (1996) Molecular beacons: probes that fluoresce upon hybridization. *Nat Biotechnol* 14: 303–308.
48. Heid CA, Stevens J, Livak KJ, Williams PM (1996) Real time quantitative PCR. *Genome Res* 6: 986–994.
49. Hatzakis A, Touloumi G, Karanicolos R, Karafoulidou A, Mandalaki T, et al. (2000) Effect of recent thymic emigrants on progression of HIV-1 disease. *Lancet* 355: 599–604.
50. Kabamba-Mukadi B, Henrivaux P, Ruelle J, Delferriere N, Bodeus M, et al. (2005) Human immunodeficiency virus type 1 (HIV-1) proviral DNA load in purified CD4+ cells by LightCycler real-time PCR. *BMC Infect Dis* 5: 15.
51. Minga AK, Anglaret X, d' Aquin Toni T, Chaix ML, Dohoun L, et al. (2008) HIV-1 DNA in peripheral blood mononuclear cells is strongly associated with HIV-1 disease progression in recently infected West African adults. *J Acquir Immune Defic Syndr* 48: 350–354.
52. Carr JM, Cheney KM, Coolen C, Davis A, Shaw D, et al. (2007) Development of methods for coordinate measurement of total cell-associated and integrated human immunodeficiency virus type 1 (HIV-1) DNA forms in routine clinical samples: levels are not associated with clinical parameters, but low levels of integrated HIV-1 DNA may be prognostic for continued successful therapy. *J Clin Microbiol* 45: 1288–1297.
53. van de Vijver D, Wensing AM, Boucher C (2007) The Epidemiology of Transmission of Drug Resistant HIV-1; Thomas Leitner T, Foley B, Hahn B, Marx P, McCutchan F, et al., editors: *Theoretical Biology and Biophysics Group, Los Alamos National Laboratory, Los Alamos, NM. LA-UR 07-4826.* pp 17-36.
54. Quinn TC, Wawer MJ, Sewankambo N, Serwadda D, Li C, et al. (2000) Viral load and heterosexual transmission of human immunodeficiency virus type 1. Rakai Project Study Group. *N Engl J Med* 342: 921–929.