

Anticancer activity of subfractions containing pure compounds of Chaga mushroom (*Inonotus obliquus*) extract in human cancer cells and in Balbc/c mice bearing Sarcoma-180 cells

Mi Ja Chung¹, Cha-Kwon Chung², Yoonhwa Jeong³ and Seung-Shi Ham^{1§}

¹Department of Food Science and Biotechnology, School of Biotechnology and Bioengineering, Kangwon National University, 192-1 Hyoja-dong, Chuncheon 200-701, Korea

²Department of Food and Nutrition, Hallym University, Chuncheon 200-702, Korea

³Department Food Science and Nutrition, Dankook University, Gyeonggi 448-701, Korea

Abstract

The Chaga mushroom (*Inonotus obliquus*) has been used in folk medicine to treat cancers. However, limited information exists on the underlying anticancer effects of the major component of *I. obliquus in vivo*. We hypothesize that the pure compounds (3 β -hydroxy-lanosta-8,24-dien-21-al, inotodiol and lanosterol, respectively) separated from *I. obliquus* would inhibit tumor growth in Balbc/c mice bearing Sarcoma-180 cells (S-180) *in vivo* and growth of human carcinoma cells *in vitro*. To test this hypothesis, the growth inhibition of each subfraction isolated from *I. obliquus* on human carcinoma cell lines (lung carcinoma A-549 cells, stomach adenocarcinoma AGS cells, breast adenocarcinoma MCF-7 cells, and cervical adenocarcinoma HeLa cells) was tested *in vitro*. Then, after S-180 implantation, the mice were fed a normal chow supplemented with 0, 0.1 or 0.2 mg of subfraction 1, 2 or 3 per mouse per day. All of the subfractions isolated from *I. obliquus* showed significant cytotoxic activity against the selected cancer cell lines *in vitro*. Subfraction 1 was more active than subfraction 2 and subfraction 3 against the A549, AGS and MCF-7 cancer cell lines *in vitro*. In *in vivo* results, subfraction 1 isolated from *I. obliquus* at concentrations of 0.1 and 0.2 mg/mouse per day significantly decreased tumor volume by 23.96% and 33.71%, respectively, as compared with the control. Subfractions 2 and 3 also significantly inhibited tumor growth in mice bearing S-180 as compared with the control mouse tumor. Subfraction 1 isolated from *I. obliquus* showed greater inhibition of tumor growth than subfractions 2 and 3, which agrees well with the *in vitro* results. The results suggest that *I. obliquus* and its compounds in these subfractions isolated from *I. obliquus* could be used as natural anticancer ingredients in the food and/or pharmaceutical industry.

Key Words: Antitumor, cancer, cancer cells, mouse tumor, mushroom

Introduction

Most chemotherapeutic agents for the treatment of cancer can destroy tumors and arrest cancer progress [1] but cancer treatment may damage healthy cells and tissues. Thus, new anticancer drugs from natural products are expected to play an important role in the development of more effective and safer agents to inhibit the onset of cancer [1]. Roland *et al.* [2] first isolated the anticancer factor calvaine from the basidiomycete *Calvatia gigantea*, which has long been used as a medicinal food. Almost 50 species in 20 generi of mushrooms have been identified as having anticancer activity [3]. The Chaga mushroom (*Inonotus obliquus*) has been used medicinally for treating cancer in several regions of the world [4].

Many studies have reported that *I. obliquus* contains excellent bioactive compounds [5,6]. 3 β -Hydroxy-lanosta-8,24-dien-21-al has been identified from *I. obliquus* [7], and a high-molecular-

weight, water-soluble, lignin-like substance from edible mushrooms of *I. obliquus* has been reported to inhibit the protease of type-1 human immunodeficiency virus [8]. Inotodiol isolated from the sclerotia of *I. obliquus* has been reported to have an inhibitory effect in a two-stage carcinogenesis test on mouse skin using 7,12-dimethyl-benz[α]anthracene [9]. Lee *et al.* [10] reported that a hot-water extract of *I. obliquus* exerts inhibitory activity against the proliferation of human colon cancer cells (HT-29). We recently identified subfractions 1 and 2 as 3 β -hydroxy-lanosta-8,24-dien-21-al and inotodiol, respectively and have reported that the compounds have antimutagenic and antioxidative activities [11]. We also found that subfraction 3 has antimutagenic and antioxidative activities (unpublished results). Oxidative stress and mutagenic activity play important roles in the cancer process [12]. Thus, the possibility exists that subfractions 1, 2, and 3 also have anticancer activity *in vitro* against the proliferation of human cancer cells and *in vivo* against sarcoma growth in a mouse

§ Corresponding Author: Ham, Seung-Shi, Tel. 82-33-250-6450, Fax. 82-33-241-0508, Email. mijachung@kangwon.ac.kr

Received: February 23, 2010, Revised: May 11, 2010, Accepted: May 24, 2010

©2010 The Korean Nutrition Society and the Korean Society of Community Nutrition

This is an Open Access article distributed under the terms of the Creative Commons Attribution Non-Commercial License (<http://creativecommons.org/licenses/by-nc/3.0/>) which permits unrestricted non-commercial use, distribution, and reproduction in any medium, provided the original work is properly cited.

model. There may also be anticancer activity of subfractions containing pure compounds of *I. obliquus* extract in Balbc/c mice bearing Sarcoma-180 cells and in various cancer cell lines that have not been examined. Therefore, we hypothesized that the subfractions 1, 2 and 3 containing pure compounds (3 β -hydroxy-lanosta-8,24-dien-21-al, inotodiol and lanosterol, respectively) separated from *I. obliquus* would inhibit tumor growth in mice bearing Sarcoma-180 cells (S-180) and as well as the growth of human carcinoma cell lines. The objective of this study was to test the activities of the three subfractions isolated from *I. obliquus* against the proliferation of cancer cells and on solid tumor inhibition as a trial for the development of novel functional anticancer medicinal food and anticancer drugs. In this study, we contributed more information about natural anticancer compounds separated from *I. obliquus* for the prevention or/and treatment of human cancer.

Materials and Methods

Chemicals and reagents

Fetal bovine serum (FBS), 3-[4,5-dimethylthiazole-2-yl]-2,5-diphenyltetrazolium bromide (MTT), and dimethylsulfoxide (DMSO) were purchased from Sigma Chemical Co. (St. Louis, MO, USA). RPMI1640 medium, penicillin and streptomycin (PEST), and trypsin-ethylenediaminetetraacetic acid (T-EDTA) were obtained from GibcoBRL (Gaithersburg, MD, USA). All solvents used were analytical grade.

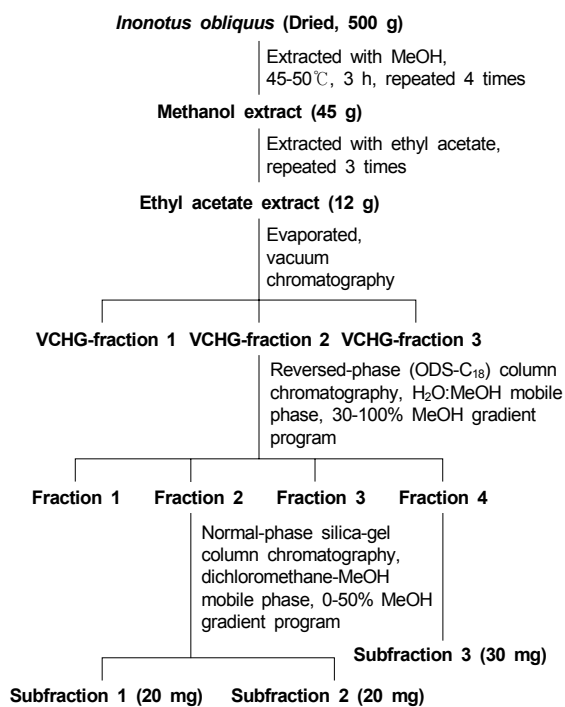


Fig. 1. Preparation of *Inonotus obliquus* subfractions

Preparation of three subfractions from *I. obliquus* extracts

The subfractions from *I. obliquus* extracts were collected by the method of Ham *et al.* [11]. The *I. obliquus* specimen used in this study was imported from Russia, dried, powdered, and stored at -20°C . The powdered specimen (500 g) was extracted twice with 3 L of methanol (99.8%) at $45-50^{\circ}\text{C}$ for 3 h. The methanol fraction (45 g) was then rotary evaporated, emulsified, dissolved in water, and extracted three times with ethyl acetate ($\text{H}_2\text{O}:\text{EtOAc}$, 5:7, v/v). The ethyl-acetate fraction (12 g) was obtained after rotary evaporation, and the dried extract was reconstituted in methanol. This stock solution was subjected to vacuum chromatography (N-2N; Eyela, Tokyo, Japan) with silica gel (60 g, 230-400 mesh) mixed with dichloromethane. The mobile phases were dichloromethane (A) and methanol (B), with a gradient of increasing methanol (0-100%) in dichloromethane and re-equilibration of the column with 100% A for 3 min prior to the next run (Fig. 1). The success of the fractionation was confirmed by thin-layer chromatography (TLC). Based on the Ames test and the DPPH method, amongst the three ethyl-acetate-extract fractions, VCHG-fraction 1 was the most bioactive fraction in the antimutagenic and antioxidant effects [5,6]. Thus, the VCHG-fraction 1 was selected and subjected to column chromatography using a reversed-phase column (ODS- C_{18}) containing LiChroprep RP-18 (25-40 μm) mixed with $\text{H}_2\text{O}:\text{MeOH}$ (1:30, v/v) in a gradient program ranging from 30% to 100% methanol (mobile phase A: methanol; mobile phase B: ultra-pure water). Four fractions were isolated, of which fraction 2 exhibited the most bioactivity. Fraction 4 also had strong bioactivity. Fraction 2 and fraction 4 were further fractionated by chromatography with a normal-phase column (2.4 cm \times 15 cm) containing silica gel (200 g, 70-230 mesh; Merck Co., Darmstadt, Germany) mixed with dichloromethane and eluted with a mobile-phase gradient ranging from 100% dichloromethane to 50% methanol. The flow rate was 1.0 ml/min (Fig. 1). This resulted into two subfractions from fraction 2, designated as subfractions 1 and 2, both of which showed bioactivity. In our previous study, subfractions 1 and 2 were identified as 3 β -hydroxy-lanosta-8,24-dien-21-al and inotodiol, respectively [11]. Subfraction 3 was obtained from fraction 4 (Fig. 1). The compound in subfraction 3 was crystallized and characterized by determining its mass spectrometry (MS) (JEOL), ^1H nuclear magnetic resonance (^1H NMR), and ^{13}C nuclear magnetic resonance (^{13}C NMR) (Bruker DRX 500 MHz) spectra.

Cancer cell and normal cell lines

The human cancer cells used in this experiment were lung carcinoma A-549 cells, breast adenocarcinoma MCF-7 cells, stomach adenocarcinoma AGS cells, Sarcoma-180 cells, and cervical adenocarcinoma HeLa cells. These, and the normal transformed primary human embryonic kidney (HEK) 293 cell line, were obtained from the Korean Cell Line Bank (Seoul,

Korea). All cells were cultured in RPMI 1640 medium supplemented with 10% FBS and 1% PN/ST. The cells were incubated at 37°C in a humid atmosphere containing 5% CO₂.

Anticancer activity *in vitro*

The cytotoxic potential of the subfractions was evaluated by the MTT assay [12] against four human tumor cell lines: A549, MCF-7, AGS, and HeLa. The inhibitory activity against the proliferation of cancer cell lines was compared with that against the normal transformed primary human 293 cell line. The cells were seeded in 96 wells at a density of 5×10^4 cells/ml and cultured for 24 h in RPMI 1640 medium with 10% FBS and 1% PEST at 37°C, 5% CO₂. The three subfractions separated from *I. obliquus* were dissolved in DMSO, and the stock solutions were diluted with RPMI 1640 medium (DMSO concentration < 0.01%). The DMSO was added to all test solutions at a final concentration of 0.01%. The control was the well containing 0.01% DMSO only. Various concentrations of the subfractions (0, 62.5, 125.0, 187.5, and 250.0 µg/ml) were added to each culture well and incubated for 48 h. The supernatants were then removed by aspiration, and MTT (5 mg/ml) was added to each culture well (one-tenth of the original culture volumes). After incubation for 4 h, the medium was removed, and the cells were allowed to dry for 30 min. The precipitates were then solubilized in DMSO with shaking for 30 min. The extent of the reduction of MTT was quantified by measuring the absorbance at 570 nm.

In vivo anticancer assays

Anticancer activity *in vivo* against sarcoma growth in a mouse model was examined using the method of Ham *et al.* [13] and Maeda *et al.* [14] with minor modification. Briefly, Balbc/c mice (six-to seven-weeks-old) were obtained from Samtaco (Gyeonggi-do, Korea), randomly divided into the control and six experimental groups, and provided with water and normal chow. Animals were housed in an air-conditioned room at 21-26°C with 45-55% moisture and a 12-hour dark/light cycle. The mice were treated in accordance with Kangwon National University guidelines for the care and use of laboratory animals. The Sarcoma-180 cell line was cultured for 7-10 days in the abdominal cavity of a Balbc/c mouse, and the cultured cells were harvested with the peritoneal fluid and centrifuged at 1,200 rpm for 10 min in phosphate-buffered saline (PBS). The separated sarcoma cells were floated in PBS and centrifuged, and their concentration was adjusted to 1.0×10^6 cells/ml. The cells (0.2 ml) were implanted subcutaneously in the left groins of mice. After 24 h, the mice were fed normal chow supplemented with water (control group), 0.1 mg subfraction 1 per mouse per day (S-180+subfraction 1A), 0.2 mg subfraction 1 per mouse per day (S-180+subfraction 1B), 0.1 mg subfraction 2 per mouse per day (S-180+subfraction 2A), 0.2 mg subfraction 2 per mouse per day (S-180+subfraction 2B), 0.1 mg subfraction 3 per mouse per day

(S-180+subfraction 3A) or 0.2 mg subfraction 3 per mouse per day (S-180+subfraction 3B) for 20 days. The mice were fed normal chow for 7 days after the last oral administration of subfractions and then euthanized with an ip injection of Avertin (Sigma-Aldrich Co., St. Louis, MO, USA) [15] on the 27th day after cancer-cell implantation. Solid tumors were removed and weighed, and the tumor-growth-inhibition ratio (I.R.) was calculated using the following formula:

$$\text{I.R. (\%)} = (\text{Cw} - \text{Tw}) / \text{Cw} \times 100$$

Cw: Average tumor weight of the control.

Tw: Average tumor weight of the experimental group.

Statistical analysis

The data were expressed as means \pm SD. Differences between the groups were determined by one-way Analysis of Variance using the SPSS package (Version 10.0; SPSS, Chicago, IL, USA). The level of statistical significance was set at $P < 0.05$. The comparisons of cancer cell growth inhibition *in vitro* and solid tumor growth inhibition *in vivo* among the groups were performed using Duncan's multiple range test [15].

Results

Inhibition of cancer cell growth in vitro

As shown in Fig. 1, the ethyl-acetate fraction from *I. obliquus* was separated into three fractions by vacuum chromatography. VCHG-fraction 1 was further separated into four fractions by

Table 1. *In vitro* anticancer activity against human cancer cell lines (A549, AGS, MCF-7, HeLa)¹⁾ and normal human embryonic kidney (HEK) 293 cells of subfractions separated from *Inonotus obliquus*

SF ²⁾	Dose (µg/mL)	Inhibition ratio (%)				
		A549	AGS	MCF-7	HeLa	HEK 293
SF 1	0	0.0 \pm 2.3 ^a	0.0 \pm 1.3 ^a	0.0 \pm 1.3 ^a	0.0 \pm 1.4 ^a	0.0 \pm 1.5 ^a
	62.5	21.4 \pm 1.7 ^c	18.5 \pm 0.7 ^b	42.1 \pm 1.7 ^g	11.0 \pm 1.2 ^b	15.4 \pm 1.0 ^{cd}
	125.0	25.4 \pm 0.6 ^d	41.4 \pm 1.0 ^e	57.3 \pm 1.8 ⁱ	26.4 \pm 1.9 ^d	16.5 \pm 0.6 ^{de}
	187.5	50.9 \pm 2.3 ^{gh}	55.0 \pm 1.3 ^h	65.6 \pm 1.0 ^j	60.4 \pm 1.0 ^h	19.9 \pm 1.0 ^h
	250.0	66.7 \pm 1.5 ⁱ	72.2 \pm 2.2 ^j	67.4 \pm 0.8 ^k	69.5 \pm 1.1 ⁱ	20.0 \pm 1.4 ^h
SF 2	62.5	18.3 \pm 1.1 ^b	28.2 \pm 1.3 ^c	22.2 \pm 1.5 ^c	18.4 \pm 0.9 ^c	11.5 \pm 0.9 ^b
	125.0	20.5 \pm 1.5 ^{bc}	31.4 \pm 1.4 ^d	40.1 \pm 1.2 ^d	30.3 \pm 1.6 ^e	20.0 \pm 0.6 ^h
	187.5	49.2 \pm 1.3 ^{fg}	45.1 \pm 1.4 ^f	54.5 \pm 1.3 ^h	42.5 \pm 2.0 ^f	19.4 \pm 0.8 ^{gh}
	250.0	51.7 \pm 0.7 ^h	51.0 \pm 1.2 ^g	55.1 \pm 1.3 ^h	58.3 \pm 1.9 ^h	19.0 \pm 0.6 ^{gh}
SF 3	62.5	19.1 \pm 0.9 ^{bc}	20.0 \pm 1.9 ^b	10.7 \pm 1.3 ^b	17.4 \pm 1.0 ^c	14.8 \pm 0.7 ^{cd}
	125.0	20.2 \pm 1.0 ^{bc}	28.9 \pm 0.9 ^c	25.4 \pm 2.0 ^d	28.3 \pm 0.9 ^{de}	14.3 \pm 0.9 ^c
	187.5	38.8 \pm 0.8 ^e	67.5 \pm 1.0 ^j	28.5 \pm 1.0 ^e	51.3 \pm 1.1 ^g	17.4 \pm 1.5 ^{ef}
	250.0	48.4 \pm 0.7 ^f	56.9 \pm 1.3 ^h	37.6 \pm 2.2 ^f	71.2 \pm 2.0 ^j	17.9 \pm 0.8 ^{efg}

Data are presented as means \pm SD of four experiments.

Values with different superscripted letters (a-j) within the same column are significantly different ($P < 0.05$) as determined by Duncan's multiple-range test.

¹⁾ A549, AGS, MCF-7 and HeLa were lung carcinoma A549 cells, breast adenocarcinoma MCF-7 cells, stomach adenocarcinoma AGS cells and cervical adenocarcinoma HeLa cells, respectively.

²⁾ Subfraction

Table 2. Antitumor activity of the three subfractions separated from *Inonotus obliquus* in Balbc/c mice bearing Sarcoma-180 cells (S-180)

	S-180 + water (control)	S-180 + subfraction 1A	S-180 + subfraction 1B	S-180 + subfraction 2A	S-180 + subfraction 2B	S-180 + subfraction 3A	S-180 + subfraction 3B
Tumor weight (g)	4.02 ± 0.19 ^a	3.06 ± 0.22 ^b	2.67 ± 0.34 ^a	3.75 ± 0.25 ^{de}	3.28 ± 0.31 ^{bc}	3.47 ± 0.23 ^{cd}	3.10 ± 0.13 ^b
Inhibition rate (%)	0.00 ± 4.64 ^a	23.96 ± 5.45 ^d	33.71 ± 8.49 ^e	6.67 ± 6.16 ^{ab}	18.45 ± 7.81 ^{cd}	13.60 ± 5.69 ^{bc}	22.97 ± 3.24 ^d

Values are means ± SD of six mice.

Values with different superscripted letters (a-e) within the same row are significantly different ($P < 0.05$) as determined by Duncan's multiple-range test.

The Sarcoma-180 cells were implanted subcutaneously in the left groins of mice. After 24 h, the mice were fed normal chow supplemented with water (S-180+water, control), 0,1 mg of subfraction 1 per mouse per day (S-180+subfraction 1A), 0,2 mg of subfraction 1 per mouse per day (S-180+subfraction 1B), 0,1 mg of subfraction 2 per mouse per day (S-180+subfraction 2A), 0,2 mg of subfraction 2 per mouse per day (S-180+subfraction 2B), 0,1 mg of subfraction 3 per mouse per day (S-180+subfraction 3A) or 0,2 mg of subfraction 3 per mouse per day (S-180+subfraction 3B) for 20 days. The mice were fed normal chow for seven days after the last oral administration of subfractions. Solid tumors were removed on the 27th day after cancer cell implantation.

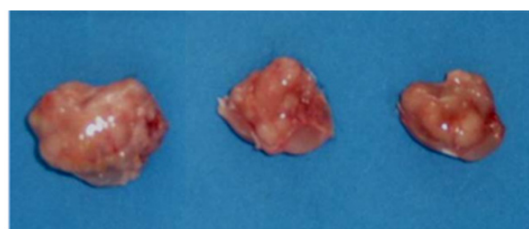
reversed-phase (ODS-C₁₈) column chromatography, of which the second fraction showed the greatest *in vitro* anticancer activity. Fraction 4 also had inhibitory activity against the proliferation of human cancer cells (data not shown). Fractions 2 and 4 from VCHG-fraction 1 were, in turn, separated by normal-phase silica-gel column chromatography into subfraction 1, subfraction 2 and subfraction 3, respectively. Each of the three subfractions yielded a single spot by TLC, confirming single-compound purity (data not shown). Purity was also confirmed by MS, ¹H NMR, and ¹³C NMR analyses. Each of compounds 1, 2, and 3 (subfractions 1, 2, and 3) had a purity of above 99.5%. The pure compounds were assayed against human lung carcinoma A549, breast adenocarcinoma MCF-7, stomach adenocarcinoma AGS, and cervical adenocarcinoma HeLa cells and normal HEK 293 cell line.

Exposure of normal HEK 293 cell culture to 0-250 µg/ml of subfractions for 48 h resulted in low cytotoxicity (Table 1), but high cytotoxicity was observed at a concentration of 300 µg/ml subfractions (data not shown). Thus, to avoid high cytotoxicity in normal cells from subfractions, 0-250 µg/ml subfractions were chosen for *in vitro* study.

As shown in Table 1, subfraction 1 was more active than subfraction 2 or subfraction 3 against the selected tumor cell lines A549, AGS, MCF-7, and HeLa. Subfractions 1, 2, and 3 (250 µg/ml) inhibited the growth of A549 cells by 66.7%, 51.7%, and 48.4%, respectively, and inhibited that of AGS cells by 72.2%, 51.0%, and 56.9%, respectively (Table 1). Subfractions 1, 2, and 3 (250 µg/ml) inhibited the growth of MCF-7 cells by 67.4%, 55.1%, and 37.6%, respectively, and inhibited that of HeLa cells by 69.5%, 58.3%, and 71.2%, respectively (Table 1). In contrast, the subfractions inhibited the growth of normal HEK 293 cells by less than 20% (Table 1). The results indicate that these subfractions inhibit cancer cell growth and have low cytotoxicity against normal cells.

Solid tumor growth inhibition

In our previous study, after oral administration with 0, 0.2, 0.4, 0.8 or 1.6 mg ethyl acetate extract from *I. obliquus* per mouse per day, no genotoxic activity was observed, and the extract inhibited the genotoxic activity by N-methyl-N'-nitro-N-nitrosoguanidine in a dose-dependent manner [6]. Thus, to avoid toxicity from



S-180 + water (control) S-180 + subfraction 1A S-180 + subfraction 1B

Fig. 2. Morphology of antitumor activity of subfraction 1 from *Inonotus obliquus* on mice bearing Sarcoma-180 cells (S-180). The Sarcoma-180 cells were implanted subcutaneously in the left groins of mice. After 24 h, the mice were fed normal chow supplemented with water (S-180+water, control), 0,1 mg subfractions 1 per mouse per day (S-180+subfraction 1A) or 0,2 mg subfractions 1 per mouse per day (S-180+subfraction 1B) for 20 days. The mice were fed normal chow for seven days after the last oral administration of subfractions. Solid tumors were removed on the 27th day after cancer cell implantation.

the subfractions, oral administration of 0.1 mg per mouse per day and that of 0.2 mg per mouse per day were chosen for *in vivo* experiment.

The average tumor weight of the Sarcoma-180-cell-bearing mice after water feeding (control) was 4.02 ± 0.19 g, whereas that of the mice after subfraction 1 administration at low level (0.1 mg/mouse per day, S-180+subfraction 1A) was 3.06 ± 0.22 g and that of the mice after subfraction 1 feeding at high level (0.2 mg/mouse per day, S-180+subfraction 1B) was 2.67 ± 0.34 g (Table 2). Thus, subfraction 1 at high level inhibited tumor weight by 33.71% of the control tumor weight, and treatment following tumor transplant resulted in a dose-dependent reduction of tumor weight in comparison with the untreated control (Fig. 2). Subfraction 2 at high level (0.2 mg/mouse per day) and subfraction 3 at both low and high levels (0.1 mg/mouse per day and 0.2 mg/mouse per day, respectively) also inhibited solid tumor growth significantly (Table 2). Subfraction 1 showed much greater inhibition of tumor growth than subfractions 2 and 3 in the mice bearing Sarcoma-180 cells, in agreement with our *in vitro* results.

Structural analysis of *I. obliquus* subfraction 3

As shown in Fig. 1, the subfractions containing pure compounds were obtained after reversed-phase (ODS-C₁₈) column chromatography.

graphy of the ethyl-acetate extract of *I. obliquus*, followed by normal-phase silica-gel column chromatography. In our previous study, subfractions 1 and 2 were identified by MS, ^1H NMR, and ^{13}C NMR analyses as 3β -hydroxy-lanosta-8,24-dien-21-al and inotodiol, respectively [11].

Inotodiol and lanosterol have similar chemical structures. Inotodiol has an OH group at position 22 (C-22) of lanosterol [9]. The chemical structure of the compound in subfraction 3 was determined by comparing the MS, ^1H -NMR, and ^{13}C -NMR spectra (data not shown) to published library spectra and spectra in the literature [7,9,15,16]. These analyses revealed that subfraction 3 is lanosterol. Thus, 3β -hydroxy-lanosta-8,24-dien-21-al, inotodiol, and lanosterol are bioactive compounds of *I. obliquus* with anticancer properties.

Discussion

This is the first study to report an antitumor effect of three subfractions (3β -hydroxy-lanosta-8,24-dien-21-al, inotodiol, and lanosterol) from *I. obliquus* extracts in the Sarcoma-180-cell-bearing mice and various cancer cell lines.

All of the subfractions showed significant inhibitory activity against the proliferation of the selected cancer cell lines (A549, AGS, MCF-7, and HeLa), but these subfractions have low cytotoxicity against normal cells. The subfractions inhibited cell growth in a dependent manner. Subfraction 1 was more active than subfraction 2 and subfraction 3 against the selected cancer cell lines. In our earlier study, ethanol extract from the *I. obliquus* showed high inhibition of the proliferation of A549, AGS, and MCF-7 cancer cells [5]. In another recent study, Lee *et al.* [10] reported that a hot-water extract of *I. obliquus* exerted inhibitory activity against the proliferation of human colon cancer cells (HT-29), in good agreement with our results.

Subfractions 1, 2 and 3 significantly inhibited tumor growth in mice bearing Sarcoma-180 cells as compared with the control mouse tumor, and subfraction 1 showed greater inhibition of tumor growth than did subfractions 2 and 3, in agreement with our *in vitro* results. Polysaccharides extracted from mycelia of *I. obliquus* not only reduce tumor size [17], but also lower elevated blood glucose [18]. Nakata *et al.* [9] have reported that the most abundant triterpene in *I. obliquus*, inotodiol, exhibits potent antitumor-promoting activity in a two-stage carcinogenesis test on mouse skin. This observation is consistent with our observations. Thus, subfractions of *I. obliquus* extracts have a strong anticancer effect and may be useful as an ingredient in functional anticancer food.

In this and previous studies, subfractions 1, 2 and 3 were identified by MS, ^1H NMR, and ^{13}C NMR analyses as 3β -hydroxy-lanosta-8,24-dien-21-al, inotodiol [11] and lanosterol, respectively. Our observations are consistent with those of other studies [7,9,11,15,16,19] reported that inotodiol had an *in vivo* antitumor effect against P388-bearing mice. *Inonotus obliquus*

appears to have an abundance of triterpenes, including lanosterol and inotodiol [9]. A chloroform extract from *I. obliquus* has an antiproliferative effect on human cancer cell lines [19], and inotodiol is the main constituent of this chloroform extract [9]. Kahlos *et al.* [18] reported that lanosterol and 3β -hydroxy-lanosta-8,24-dien-21-al also inhibit proliferation of MCF-7 adenocarcinoma cells.

Lee *et al.* [10] showed that the hot water extract of *Inonotus obliquus* would be useful as an antitumor agent via the induction of the apoptosis and inhibition of the growth of cancer cells through up-regulation of the expression of proapoptotic proteins (Bax and caspase-3) and down-regulation of antiapoptotic proteins (Bcl-2). The water extract of *Inonotus obliquus* mushroom exhibited a potential anticancer activity against B16-F10 melanoma cells *in vitro* and *in vivo* through the inhibition of proliferation and induction of differentiation and apoptosis of cancer cells [20]. Nomura *et al.* [19] reported that Inotodiol, from *Inonotus obliquus*, inhibits cancer cell proliferation through apoptosis induction by activating caspase-3. However, the mechanisms on anticancer activity of 3β -hydroxy-lanosta-8,24-dien-21-al and lanosterol have not been examined.

In conclusion, the three subfractions (3β -hydroxy-lanosta-8,24-dien-21-al, inotodiol, and lanosterol) inhibited *in vitro* proliferation of various human cancer cell lines. The three subfractions also had *in vivo* antitumor effects on Sarcoma-180-cell-bearing mice. 3β -hydroxy-lanosta-8,24-dien-21-al, inotodiol, and lanosterol may therefore be interesting compounds for the development of novel anticancer drugs and functional anticancer food. However, further human studies are needed to determine whether dietary feeding of 3β -hydroxy-lanosta-8,24-dien-21-al, inotodiol, and lanosterol can reduce tumor growth as observed in the present *in vitro* and *in vivo* studies. We also need mechanistic studies on 3β -hydroxy-lanosta-8,24-dien-21-al and lanosterol.

References

1. Sporn MB. Prevention of cancer in the next millennium: report of the chemoprevention working group to the American association for cancer research. *Cancer res* 1999;59:4743-58.
2. Roland JF, Chmielewicz ZF, Weiner BA, Gross AM, Boening OP, Luck JV, Bardos TJ, Reilly HC, Sugiura K, Stock CC, Lucas EH, Byerrum RU, Scevena JA. Calvacin: A new antitumor agent. *Science* 1960;132:1897.
3. Gregory FJ, Healy EM, Agersborg HP Jr, Warren GH. Studies on antitumor substances produced by Basidiomycetes. *Mycologia* 1966;58:80-90.
4. Saar M. Fungi in Khanty folk medicine. *J Ethnopharmacol* 1991;31:175-9.
5. Ham SS, Oh SW, Kim YK, Shin KS, Chang HY, Chung GH. Antimutagenic and cytotoxic effects of ethanol extract from the *Inonotus obliquus*. *Journal of the Korean Society of Food Science and Nutrition* 2003;32:1088-94.
6. Ham SS, Oh SW, Kim YK, Shin KS, Chang HY, Chung GH.

- Antioxidant and genotoxic inhibition activity of ethanol extract from the *Inonotus obliquus*. Journal of Korean Society of Food Science and Nutrition 2003;32:1071-5.
7. Kahlos K, Hiltunen R, Schantz MV. 3 β -Hydroxy-lanosta-8,24-dien-21-al, a new triterpene from *Inonotus obliquus*. Planta Med 1984;50:197-8.
 8. Ichmura T, Watanabe O, Maruyama S. Inhibition of HIV-1 protease by water-soluble lignin-like substance from an edible mushroom *Fuscoporia obliqua*. Biosci Biotechnol Biochem 1998;62:575-7.
 9. Nakata T, Yamada T, Taji S, Ohishi H, Wada SI, Tokuda H, Sakuma K, Tanaka R. Structure determination of inonotusoxides A and B and *in vivo* anti-tumor promoting activity of inotodiol from the sclerotia of *Inonotus obliquus*. Bioorg Med Chem 2007;15:257-64.
 10. Lee SH, Hwang HS, Yun JW. Antitumor activity of water extract of a mushroom, *Inonotus obliquus*, against HT-29 human colon cancer cells. Phytother Res 2009;23:1784-9.
 11. Ham SS, Kim SH, Moon SY, Chung MJ, Cui CB, Han EK, Chung CK, Choe M. Antimutagenic effects of subfractions of Chaga mushroom (*Inonotus obliquus*) extract. Mutat Res 2009; 672:55-9.
 12. Chung MJ, Walker PA, Brown RW, Hogstrand C. Zinc-mediated gene expression offers protection against H₂O₂-induced cytotoxicity. Toxicol Appl Pharmacol 2005;205:225-36.
 13. Ham YA, Choi HJ, Kim SH, Chung MJ, Ham SS. Antimutagenic and antitumor effects of *Adenophora triphylla* extracts. Journal of Korean Society of Food Science and Nutrition 2009;38:25-31.
 14. Maeda N, Kokai Y, Ohtani S, Hada T, Yoshida H, Mizushima Y. Inhibitory effects of preventive and curative orally administered spinach glycoylglycerolipid fraction on the tumor growth of sarcoma and colon in mouse graft models. Food Chem 2009;112: 205-10.
 15. Oh HT, Chung MJ, Kim SH, Choi HJ, Ham SS. Masou salmon (*Oncorhynchus masou*) ethanol extract decrease 3-hydroxy-3-methylglutaryl coenzyme A reductase expression in diet-induced obese mice. Nutr Res 2009;29:123-9.
 16. Kahlos K, Hiltunen R. Identification of some lanostane type triterpenes from *Inonotus obliquus*. Acta Pharmaceutica Fennica 1983;92:220-2.
 17. Mizuno T, Zhuang C, Abe K, Okamoto H, Kiho T, Ukai S, Leclerc S, Meijer L. Antitumor and hypoglycemic activities of polysaccharides from the Sclerotia and Mycelia of *Inonotus obliquus* (Pers: Fe.) Pfl. (Aphyllphoromycetidae). International Journal of Medicinal Mushrooms 1999;1:301-16.
 18. Kahlos T, Zhuangas L, Hiltunen R. Antitumor activity of some compounds and fractions from an n-hexane extract of *Inonotus obliquus*. Acta Pharmaceutica Fennica 1987;96:33-40.
 19. Nomura M, Takahashi T, Uesugi A, Tanaka R, Kobayashi S. Inotodiol, a lanostane triterpenoid, from *Inonotus obliquus* inhibits cell proliferation through caspase-3-dependent apoptosis. Anticancer Res 2008;28:2691-6.
 20. Youn MJ, Kim JK, Park SY, Kim Y, Park C, Kim ES, Park KI, So HS, Park R. Potential anticancer properties of the water extract of *Inonotus obliquus* by induction of apoptosis in melanoma B16-F10 cells. J Ethnopharmacol 2009;121:221-8.