

CLINICAL SCIENCE

DENTAL APPROACH IN THE PEDIATRIC ONCOLOGY PATIENT: CHARACTERISTICS OF THE POPULATION TREATED AT THE DENTISTRY UNIT IN A PEDIATRIC ONCOLOGY BRAZILIAN TEACHING HOSPITAL

Camila Carrillo,¹ Heloisa Vizeu,¹ Luis Alberto Soares-Júnior,¹ Marcelo Fava,¹ Vicente Odone Filho^{II}

doi: 10.1590/S1807-59322010000600002

Carrillo C, Fava M, Vizeu H, Soares-Junior LA, Odone Filho V. Dental approach in the pediatric oncology patient: characteristics of the population treated at the dentistry unit in a Pediatric Oncology Brazilian Teaching Hospital. Clinics. 2010;65(6):569-73.

OBJECTIVES: The objective of this paper was to characterize the population seen at the dentistry unit of the hematology-oncology service of the Oncology-Hematology Service, Instituto da Criança at the Hospital das Clínicas, Faculdade de Medicina, Universidade de São Paulo. Oral problems resulting from cancer therapy increase the risk of infection, length of hospital stay, treatment cost and negative impact on the course and prognosis of the disease.

METHOD: Of the 367 medical records of cancer patients seen from November 2007 until December 2008: 186 with a cancer diagnosis and complete clinical data were selected, while 20 with a cancer diagnosis and incomplete records were excluded; 161 medical records with only hematological diagnosis were also excluded. The following characteristics were assessed: ethnicity, gender, age, diagnosis and characteristics of the neoplasm, cancer therapy status and performed dental procedures.

RESULTS: Review of 1,236 visits indicated that 54% (n=100) of the patients had blood cancers, 46% (n=86) had solid tumors and 63% were undergoing anticancer therapy. The proportion of males (52.7%) in the study population was slightly greater. The most common cancer was acute lymphocytic leukemia (32.2%). Cancer occurred more often among those patients aged 5 to 9 years. The most common dental procedures were restorative treatment, preventive treatment and removal of infectious foci.

CONCLUSION: The characteristics of the studied population were similar to those of the general Brazilian and global populations, especially regarding gender and diagnosis distributions. The aim of implementation of the dentistry unit was to maintain good oral health and patients' quality of life, which is critical to provide oral care and prevent future oral problems.

KEYWORDS: Pediatric dentistry; Dental care; Outpatient care; Cancer.

INTRODUCTION

Established in 2007, the dentistry unit of the Oncology-Hematology service of the Child's Institute at the Hospital das Clínicas, Faculdade de Medicina, Universidade de São Paulo (ICr/HCFMUSP), sees patients aged from birth until young adulthood who are undergoing cancer therapy. The

unit also provides care to patients with blood diseases, such as congenital or acquired anemia and platelet disorders.

Oral problems resulting from cancer therapy increase the risk of infection, length of hospital stay, treatment cost and negative impact on the course and prognosis of the disease.¹

In addition to periodical visits to the ward, the dentistry team focus on preventive actions and dental treatment before, during and after chemo- or radiotherapy. The objective of their work is to prevent infections, maintain oral hygiene and minimize the adverse effects of anticancer therapies.

In addition to these objectives, the unit acts as a reference center for the development of research, such as that reported here. The goal of this retrospective study is to characterize the population treated at a dentistry unit in a pediatric oncology teaching hospital.

¹ Oncology-Hematology Service, Instituto da Criança, Dentistry Unit, Hospital das Clínicas, Faculdade de Medicina, Universidade de São Paulo - São Paulo/SP, Brasil.

^{II} Oncology-Hematology Service, Pediatric Division, Hospital das Clínicas, Faculdade de Medicina, Universidade de São Paulo - São Paulo/SP, Brasil.
Email: mila_merida@yahoo.com.br
Tel: 55 11 3897-3800

Received for publication on February, 13 2010

First review completed on March 08, 2010

Accepted for publication on March 10, 2010

MATERIAL AND METHOD

Of the 367 medical records of dental unit patients seen in the 14-month study period (from November 2007 to December 2008), 186 with a cancer diagnosis and complete clinical data were selected; 20 with a cancer diagnosis and incomplete data were excluded and 161 medical records with only a hematological diagnosis were excluded. The following characteristics were assessed: ethnicity, gender, age, diagnosis, characteristics of the cancer, currently undergoing cancer therapy and dental procedures performed.

RESULTS

Evaluation of 1,236 appointments during the study period yielded the following observations:

1. Diagnosis: 54% (n=100) of the patients had hematological malignancies, and 46% (n=86) of the patients had solid tumors. Most of the patients (n=117) (63%) were undergoing cancer therapy. Figure 1 shows the most prevalent types of cancer in the study population. Table 1 shows the distribution of the types of cancer diagnosis identified in the 186 patients. There is a clear prevalence of acute lymphocytic leukemia (32.2%) and leukemia (Table 1).

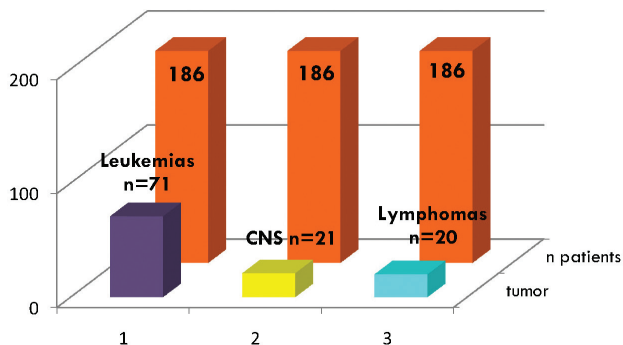


Figure 1 - The most prevalent childhood and adolescent cancer diagnoses in the studied population.

2. Gender and age: A slight increase in males (52.7%) compared to females (47.3%) was observed (Figure 2). The pediatric age groups most commonly affected by cancer are children aged 5 to 8 years, followed by those patients aged 10 to 14 years and finally those patients aged 0 to 4 years (Figure 2). The distribution of cancer prevalence related to gender was also evaluated (Figure 3). Males were more affected compared to females in the most prevalent childhood cancer (leukemias, lymphomas and tumors of the central nervous system). Figure 4 shows that the most common cancers among children aged 5 to 9 years are leukemias, lymphomas and tumors of the central nervous system.

Table 1 - Diagnoses of the study population.

Diagnosis	N. of patients	%
Leukemias (general)	71	38.2
Acute Lymphocytic Leukemia	60	32.2
CNS tumors	21	11.3
Lymphomas	20	10.8
Neuroblastoma	13	6.9
Retinoblastoma	9	4.8
RMS	9	4.8
Wilms' tumor	8	4.3
Osteosarcoma	8	4.3
Histiocytosis	6	3.2
Lymphoepithelioma	4	2.1
Thyroid cancer	2	1
Nasal angiofibroma	2	1
Mesenchymal tumors	2	1
Ewing's sarcoma	6	3.2
Other	8	4.3
Total	186	100

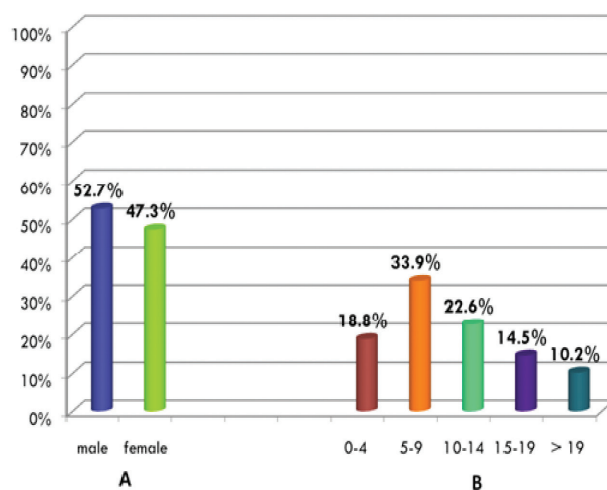


Figure 2 - A: The prevalence of the genders in the studied population. B: The prevalence of the pediatric age groups most commonly affected by each cancer type in the studied population.

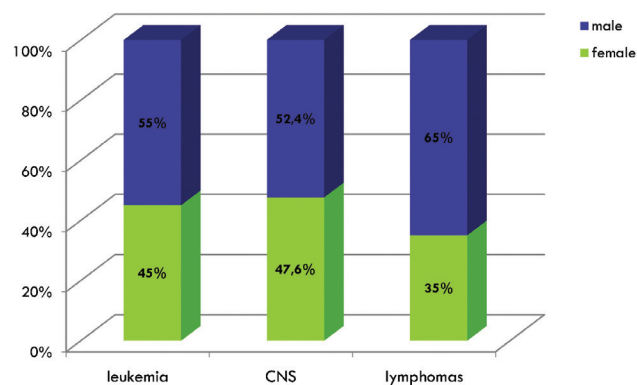


Figure 3 - The distribution of gender among the most prevalent childhood and adolescent cancer diagnoses in the studied population.

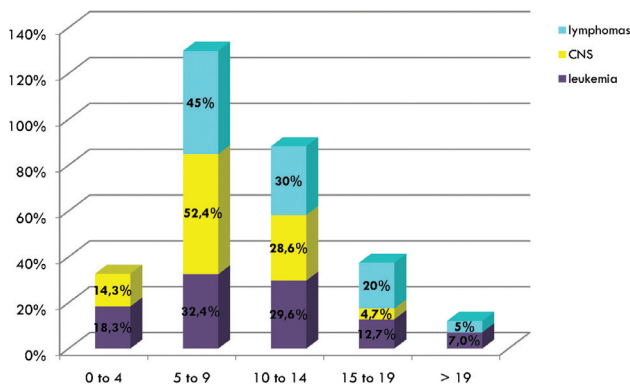


Figure 4 - The distribution of the most prevalent childhood and adolescent cancer diagnoses among the age groups in the studied population.

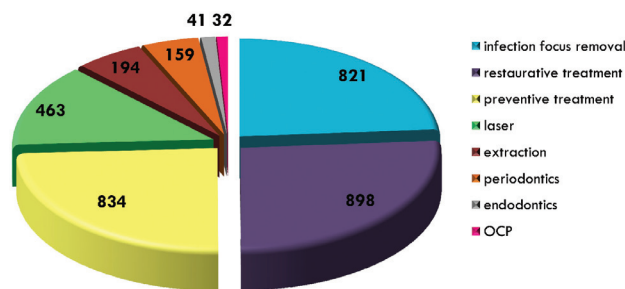


Figure 5 - Dental procedures performed in the studied population.

3. Dental procedures: The most common dental procedures among the study population were restorative treatment, preventive procedures (prophylaxis, fluoride and oral hygiene), and removal of infectious foci (Figure 5).

DISCUSSION

The recently established Dentistry Unit in our Oncology-Hematology Service optimized the care provided to patients and provided better interaction and close cooperation between the dental and medical teams, benefiting the patients and their families.

This specialized unit is essential in Brazilian hospital settings because more than 9,000 new childhood cancers are diagnosed annually in Brazil. Cancer is the third leading cause of death in the 1- to 19-year-old age group in this country, behind accidents and violence.²

The types of cancers that affect children under 15 years of age are distinct from those that affect adults.³ The literature reports that during childhood, acute lymphocytic leukemia (ALL) is the most common malignancy, representing 24% of all childhood malignancies⁴⁻⁶ and 75% of all childhood leukemias.⁷ The findings of this study are consistent with the data presented in the literature. In our study ALL represents 84.7% of all leukemias and 32.2% of

all childhood malignancies.

The 0- to 4-year-old age group is cited as the age group most frequently affected by cancers. In this study, most (56.5%) of the cancer patients were aged 5 to 14 years.

In Brazil, leukemia predominates in the 1- to 4-year-old age group (31.6%), lymphoma is dominant in the 15- to 18-year-old age group (35.6%), and tumors of the central nervous system have a similar prevalence (26%) in all patients under 14 years (1 to 4, 5 to 9 and 10 to 14 years).² The results of this study show that the most common malignancies in the 5- to 9-year-old age group were leukemias, lymphomas and tumors of the central nervous system. This finding should be further investigated in a more diverse patient population to avoid bias introduced by selection of patients from a pediatric oncology teaching hospital.

Regarding the comparison between genders, this study and other related studies,⁸ agree that general tumors, leukemias, lymphomas and tumors of the central nervous system are more prevalent in males than in females.

Many authors⁹⁻¹¹ report that the most common complications of pediatric cancer therapy are mucositis, xerostomia, bleeding, dysguesia, widening of the periodontal ligament space and infections (including bacterial, fungal and viral). These complications cause pain and discomfort, require parental narcotic therapy and extended hospitalizations, increase costs, and interfere with the course and prognosis of the neoplasm.¹²

Dental abnormalities are the most common late complications in children subjected to cancer therapy; among these abnormalities are alterations of shape (microdontia, macrodontia, taurodontia), number (anodontia) and root formation (root shortening and blunting of the roots, root stunting) of the teeth.¹³⁻¹⁵ Children who undergo head and neck radiotherapy may experience abnormalities in the growth and maturation of the craniofacial skeleton structures,^{16,17} which can cause severe cosmetic and functional sequelae that require surgical and orthodontic interventions.¹⁸

In our study, 63% of the patients were undergoing cancer therapy, and 37% had finished their treatment; therefore, periodic dental follow-ups are essential in both groups to diagnose complications and intervene as early as possible during cancer therapy. Furthermore, orthodontic treatment provided by this unit may be necessary to prevent and treat the craniofacial abnormalities caused by cancer therapy.

Another side effect of chemotherapy is a drop in blood cell count, which is generally seen 5 to 7 days after the beginning of each cycle and usually lasts for 14 days. The period during which the blood cell count is low varies according to the treatment protocol.¹⁹

For this reason, the oral cavities of all pediatric patients should be assessed before the beginning of cancer treatment whenever possible to eliminate potential infectious foci and dental infections.^{20,21} When time is limited for dental care before cancer therapy, treatment priorities should be infections, extractions, periodontal care and sources of irritation.¹⁹

During the 14-month study period, the most common dental procedures were restorative treatment, preventive procedures and removal of infectious foci, given the poor health of the patients before cancer therapy. The dental procedures and oral care are performed to provide information and prevent future oral complications.

Another treatment that was used quite frequently was low-power laser therapy to minimize one of the most debilitating side effects of cancer therapy: oral mucositis.

Oral mucositis is a debilitating consequence and dose-limiting factor of anticancer therapy. It manifests as a burning sensation in the oral mucosa that can evolve to edema, erythema with formation of ulcers and

pseudomembranes. It results in frequent extreme pain that requires dietary changes and parenteral administration of analgesics.²²

An efficient treatment for prevention of the onset of mucositis has not been described in the literature. Treatment with a low-power laser has been used in many wound models to promote tissue regeneration²³ and to effectively reduce the severity of mucositis in animal²⁴⁻²⁶ and human²⁷⁻²⁹ studies. This finding is in agreement with our clinical results.

CONCLUSION

In conclusion, the studied population presented characteristics that are similar to characteristics of the general Brazilian and world populations, especially regarding gender and diagnosis among cancer patients. In our study population, the establishment of a dentistry unit was essential to provide necessary oral care and prevent future problems, with the aim of maintaining the patients' oral health and improving quality of life.

REFERENCES

1. Sonis ST. The pathobiology of mucositis. *Nat Rev Cancer*. 2004;4:277-84.
2. Instituto Nacional do Câncer- INCA. www.inca.gov.br. Acesso em julho de 2009.
3. Braga PE, Latorre MRDO, Curado MP. Câncer na Infância: Análise Comparativa da Incidência, Mortalidade e Sobrevida em Goiânia (Brasil) e outros países. *Cad. Saúde Pública*, Rio de Janeiro. 2002;8:33-44.
4. Ministério da Saúde. Instituto Nacional de Câncer. Coordenação de Programas de Controle do Câncer. "O Problema do Câncer no Brasil", quarta edição revisada e atualizada. Rio de Janeiro, 1997.
5. Smith MA, Ries LAG. Childhood cancer: incidence, survival, and mortality. In: Pizzo PA, Poplack DG, ed. Philadelphia: Lippincott Williams & Wilkins; 2002:1-12.
6. Balis FM, Holcenberg JS, Blaney SM. General principles of chemotherapy. In: Pizzo PA, Poplack DG, ed. Philadelphia: Lippincott Williams & Wilkins; 2002: 237-308.
7. Margolin JF, Steuber CP, Poplack DG. Acute lymphoblastic leukemia. In: Pizzo PA, Poplack DG, ed. Philadelphia: Lippincott Williams & Wilkins;2002:489-544.
8. Mirra AP, Latorre MRO, Veneziano DB. Incidência, mortalidade e sobrevida do câncer da infância no município de São Paulo, 2004. *Registro de Cancer de São Paulo*. Faculdade de Saúde Pública da Universidade de São Paulo.
9. Mealey BL, Semba SE, Hallmon WW. Dentistry and the cancer patient: Part 1--Oral manifestations and complications of chemotherapy. *Compendium*. 1994;15:1252,1254,1256 passim; quiz 1262.
10. Barry JM The dentist's role in managing oral complications of cancer therapies. *Dent Today*. 2005;24:58-61;quiz 61.
11. McClure D, Barker G, Barker B, Feil P. Oral management of the cancer patient, part I: Oral complications of chemotherapy. *Compendium*. 1987;8:41-3,46-7,50.
12. Hain R, Roberts G, Lucas V. Paediatric problems. In: *Oral care in advanced diseases*. 1st ed. Oxford University Press; 2005.p 209-18.
13. Jaffe N, Toth BB, Hoar RE, Ried HL, Sullivan MP, McNeese MD. Dental and maxillofacial abnormalities in long-term survivors of childhood cancer: effects of treatment with chemotherapy and radiation to the head and neck. *Pediatrics*. 1984 ;73:816-23.
14. Takeda Y, Kuroda M, Amari E, Yanagisawa T. Failure of root development of human permanent teeth following irradiation. *Int J Oral Maxillofac Surg*. 1987; 16:376-82.
15. Sandres BJ, Shapiro AM, Hock RA, Weddel JA. Tratamento de pacientes com problemas médicos: Hematologia, Oncologia, Hepatite e AIDS. In: McDonald RE, Avery DR. *Odontopediatria*. 7th ed. Rio de Janeiro, Brazil: Editora Guanabara Koogan; 2001.p 436-52.
16. Denys D, Kaste SC, Kun LE, Chaudhary MA, Bowman LC, Robbins KT. The effects of radiation on craniofacial skeletal growth: a quantitative study. *Int J Pediatr Otorhinolaryngol*. 1998;15:45:7-13.
17. Karsila-Tenovuo S, Jahnukainen K, Peltomäki T, Minn H, Kulmala J, Salmi TT, et al. Disturbances in craniofacial morphology in children treated for solid tumors. *Oral Oncol*. 2001;37:586-92.
18. Otmani N. Oral and maxillofacial side effects of radiation therapy in children. *J Can Dent Assoc*. 2007;73:257-61.
19. da Fonseca MA. Dental care of the pediatric cancer patient. *Pediatr Dent*. 2004 Jan-; 26:53-7.

20. Mimura MA, Hirota SK, Sugaya NN, Sanches Jr JA, Migliari DA. Systemic treatment in severe cases of recurrent aphthous stomatitis: an open trial. *Clinics*. 2009;64:193-8.
21. Chin EA. A brief overview of the oral complications in pediatric oncology patients and suggested management strategies. *ASDC J Dent Child*. 1998;65:468-73. Review.
22. Lockhart P, Sonis ST. Alterations in the Oral mucosa Caused by Chemotherapeutic Agents. *J Dermatol Surg Oncol*.1981;7:1019-25.
23. Cowen D, Tardieu C, Schubert M, Peterson D, Resbeut M, Faucher C, et al. Low energy helium-neon laser in the prevention of oral mucositis in patients undergoing bone marrow transplant: results of a double blind randomized trial. *Int J Radiat Oncol Biol Phys*. 1997;38:697-703.
24. Sonis ST, Tracey C, Shklar G, Jenson J, Florine D. Sonis ST, Tracey C, et al. An animal model for mucositis induced by cancer chemotherapy. *Oral Surg Oral Med Oral Pathol*. 1990;69:437-43.
25. Sonis ST, Costa JW Jr, Evitts SM, Lindquist LE, Nicolson M. Effect of epidermal growth factor on ulcerative mucositis in hamsters that receive cancer chemotherapy. *Oral Surg Oral Med Oral Pathol*. 1992;74:749-55.
26. Lopes NN, Plapler H, Chavantes MC, Lalla RV, Yoshimura EM, Alves MT. Cyclooxygenase-2 and vascular endothelial growth factor expression in 5-fluorouracil-induced oral mucositis in hamsters: evaluation of two low-intensity laser protocols. *Support Care Cancer*. 2009;17:1409-15.
27. Wong SF, Wilder-Smith P. Pilot study of laser effects on oral mucositis in patients receiving chemotherapy. *The Cancer Journal*. 2002;8:247-54.
28. Maya GA, Sagar MS, Fernandes D. Effect of low level helium-neon (He-Ne) laser therapy in the prevention & treatment of radiation induced mucositis in head & neck cancer patients. *Indian J Med Res*. 2006;124:399-402.
29. Antunes HS, Azevedo AM, Bouzas LFS, Adão CAE, Pinheiro CT, Mayte R, et al. Low-power laser in the prevention of induced oral mucositis in bone marrow transplantation patients: a randomized trial. *Blood* 2006;109:2250-5.

