

RESEARCH

Open Access

Tumor suppressor FLCN inhibits tumorigenesis of a *FLCN-null* renal cancer cell line and regulates expression of key molecules in TGF- β signaling

Seung-Beom Hong¹, HyoungBin Oh¹, Vladimir A Valera¹, Jaime Stull¹, Duy-Tan Ngo¹, Masaya Baba¹, Maria J Merino², W Marston Linehan¹ and Laura S Schmidt^{*1,3}

Abstract

Background: Germline mutations in the *FLCN* gene are responsible for the development of fibrofolliculomas, lung cysts and renal neoplasia in Birt-Hogg-Dubé (BHD) syndrome. The encoded protein folliculin (FLCN) is conserved across species but contains no classic motifs or domains and its function remains unknown. Somatic mutations or loss of heterozygosity in the remaining wild type copy of the *FLCN* gene have been found in renal tumors from BHD patients suggesting that *FLCN* is a classic tumor suppressor gene.

Results: To examine the tumor suppressor function of *FLCN*, wild-type or mutant *FLCN* (H255R) was stably expressed in a *FLCN-null* renal tumor cell line, UOK257, derived from a BHD patient. When these cells were injected into nude mice, tumor development was inversely dependent upon the level of wild-type *FLCN* expression. We identified genes that were differentially expressed in the cell lines with or without wild-type *FLCN*, many of which are involved in TGF- β signaling, including *TGF- β 2* (*TGFB2*), *inhibin β A chain* (*INHBA*), *thrombospondin 1* (*THBS1*), *gremlin* (*GREM1*), and *SMAD3*. In support of the *in vitro* data, *TGFB2*, *INHBA*, *THBS1* and *SMAD3* expression levels were significantly lower in BHD-associated renal tumors compared with normal kidney tissue. Although receptor mediated SMAD phosphorylation was not affected, basal and maximal TGF- β -induced levels of *TGFB2*, *INHBA* and *SMAD7* were dramatically reduced in *FLCN-null* cells compared with *FLCN*-restored cells. Secreted TGF- β 2 and activin A (homo-dimer of *INHBA*) protein levels were also lower in *FLCN-null* cells compared with *FLCN*-restored cells. Consistent with a growth suppressive function, activin A (but not TGF- β 2) completely suppressed anchorage-independent growth of *FLCN-null* UOK257 cells.

Conclusions: Our data demonstrate a role for *FLCN* in the regulation of key molecules in TGF- β signaling and confirm deregulation of their expression in BHD-associated renal tumors. Thus, deregulation of genes involved in TGF- β signaling by *FLCN* inactivation is likely to be an important step for tumorigenesis in BHD syndrome.

Background

Birt-Hogg-Dubé (BHD) syndrome is a familial disorder that predisposes patients to develop hair follicle hamartomas (84-90% penetrance), lung cysts (85% penetrance) and renal neoplasia (29-34% penetrance) [1-5]. BHD patients are at risk to develop bilateral, multifocal renal tumors with a variety of histologies, mainly chromophobe (34%) and oncocytic hybrid (50%) tumors with features of both chromophobe renal cell carcinoma (RCC)

and renal oncocytoma. Clear cell and papillary RCC as well as renal oncocytomas are also found in BHD patients at a low frequency [6]. The BHD syndrome locus was mapped to chromosome 17p11.2 by linkage analysis in BHD families, and germline mutations in a novel gene *FLCN* (alias *BHD*), were identified and characterized [5,7-11]. Most BHD families carry germline mutations predicted to truncate the encoded protein, folliculin (FLCN), including insertion/deletion, nonsense, and splice-site mutations reported in several large BHD cohorts [4,5,11]. Either somatic "second hit" mutations predicted to truncate the protein or loss of heterozygosity at the BHD syndrome locus was identified in 70% of renal tumors from

* Correspondence: schmidt@mail.nih.gov

¹ Urologic Oncology Branch, Center for Cancer Research, National Cancer Institute, 10 Center Drive MSC1107, 10/CRC/1W-5940, Bethesda, MD 20892 USA

Full list of author information is available at the end of the article

BHD patients [12] supporting a tumor suppressor function for *FLCN*.

Two naturally-occurring animal models have been described that show phenotypes similar to BHD patients. The Nihon rat model develops renal carcinoma with clear cell histology by 6 months of age and harbors a cytosine insertion mutation in exon 3 of rat *Flcn* [13]. A canine model of BHD, which develops renal cystadenocarcinoma and nodular dermatofibrosis (RCND), carries a germline missense mutation (H255R) in canine *Flcn* [14]. Recently, we and others described a conditional *Flcn* knockout mouse model in which *Flcn* inactivation was targeted to mouse kidney using the Cre-lox site-specific recombination system. The affected mice displayed renal hyperplasia, formation of multiple cysts and renal dysfunction, suggesting important roles for *Flcn* in regulation of renal cell proliferation [15,16]. No tumors formed before the animals died at 3 weeks of age due to renal failure, and therefore the mechanism by which *Flcn* inactivation leads to kidney cancer could not be examined in this *in vivo* model. However, recently we and others have reported that mice heterozygous for *Flcn* develop renal cysts and tumors as they age beyond a year [17-19], with demonstrated loss of the wild type copy of *Flcn* (17). These *Flcn* +/- mouse models more closely mimic BHD syndrome in the human, albeit with a long latency.

FLCN encodes a 64 kDa protein with no characteristic functional domains, which forms a complex with novel folliculin-interacting proteins 1 and 2 (FNIP1 and FNIP2), and 5'-AMP-activated protein kinase (AMPK), an important energy sensor in cells that negatively regulates mammalian target of rapamycin (mTOR) [20,21]. Phosphorylation of *FLCN* and FNIP1 was regulated by AMPK and mTOR activities suggesting a functional relationship with the AMPK-mTOR pathway. Interestingly, activation of mTOR downstream signaling molecules was seen in kidney-targeted *BHD* conditional knockout mouse kidneys [15,16]. In addition, the renal tumors from BHD patients showed increased phosphorylation of mTOR [15]. In contrast to these results, it was suggested that yeast homologs of *FLCN* and *TSC1/2* may have opposing roles in amino acid homeostasis [22]. The cysts and renal tumors derived from the *Flcn* heterozygous mice described by Hartman et al. showed reduced phospho-S6R suggesting diminished mTOR activation [18]. On the other hand Hasumi and coworkers found upregulation of both mTORC1 and mTORC2 pathways in kidney tumors from *Flcn*^{d/+} mice [17]. Hudon et al. suggest that up or down regulation of mTOR by inactivation of *Flcn* in a mouse model may be context-dependent [19]. Thus it is possible that mTOR signaling is regulated differently by *FLCN* depending on cell types or experimental conditions.

A renal cancer cell line (UOK257) established from a BHD patient was recently developed and characterized [23]. UOK257 cells harbor a cytosine insertion in a (poly)C tract, the frequently mutated "hot spot" within exon 11 of *FLCN* (c.1285dupC), and have lost the wild-type copy of *FLCN*. Cytogenetic analysis revealed that the cell line was nearly triploid displaying multiple unbalanced translocations and deletions of chromosomes. The *MYC* copy number was heterogeneous in UOK257 cells ranging from 3 to 5 copies. These cells formed tumors in immunodeficient mice (SCID/BEIG) exhibiting predominantly atypical clear epithelial cell type histology, as well as a variety of other histologic types including tubular papillary, and foci reminiscent of chromophobe RCC, all of which resemble the histologies within the tumor from which the cell line was derived [23].

In the current study, in order to investigate the tumor suppressor function of *FLCN* we have introduced wild-type *FLCN* into UOK257 cells and compared their growth *in vitro* and *in vivo*. We found that wild-type *FLCN* suppressed tumor cell growth *in vivo*, confirming the tumor suppressor function of *FLCN*. In addition, we employed gene expression microarray analysis to identify novel downstream target genes of *FLCN*. Among the differentially expressed genes, we identified several critical genes involved in TGF- β signaling including *TGFB2*, *INHBA*, *THBS1*, *GREM1* and *SMAD3*. Since deregulation of TGF- β signaling is important in tumorigenesis and tumor progression, we characterized the expression of these genes in *FLCN*-null and *FLCN*-expressing cultured cells as well as in renal tumors surgically removed from BHD patients. In addition, we examined the growth suppressive effect of activin A in the *FLCN*-null cell line and investigated receptor mediated TGF- β signaling in *FLCN*-null and *FLCN*-restored cell lines.

Results

Wild-type *FLCN* expression was restored in UOK257 cells by lentiviral vectors

To evaluate the tumor suppressor function of *FLCN*, wild-type or mutant (H255R) *FLCN* cDNA was introduced into the *FLCN*-null UOK257 cells using lentiviral vectors. Four clones expressing wild-type *FLCN* (UOK257-2, -3, -4, and -6) and one clone expressing mutant *FLCN*-H255R (UOK257-H255R; *Flcn* missense mutation responsible for canine RCND) were isolated and compared to the parental UOK257 cells (UOK257-P). *FLCN* protein expression was measured by Western blot analysis using a mouse monoclonal anti-*FLCN* antibody. Relatively high levels of *FLCN* protein were detected in the UOK257-2, -4 and -6 cells but very low levels of *FLCN* protein were detected in the UOK257-3 and UOK257-H255R cells (Fig. 1A). *FLCN* mRNA expression

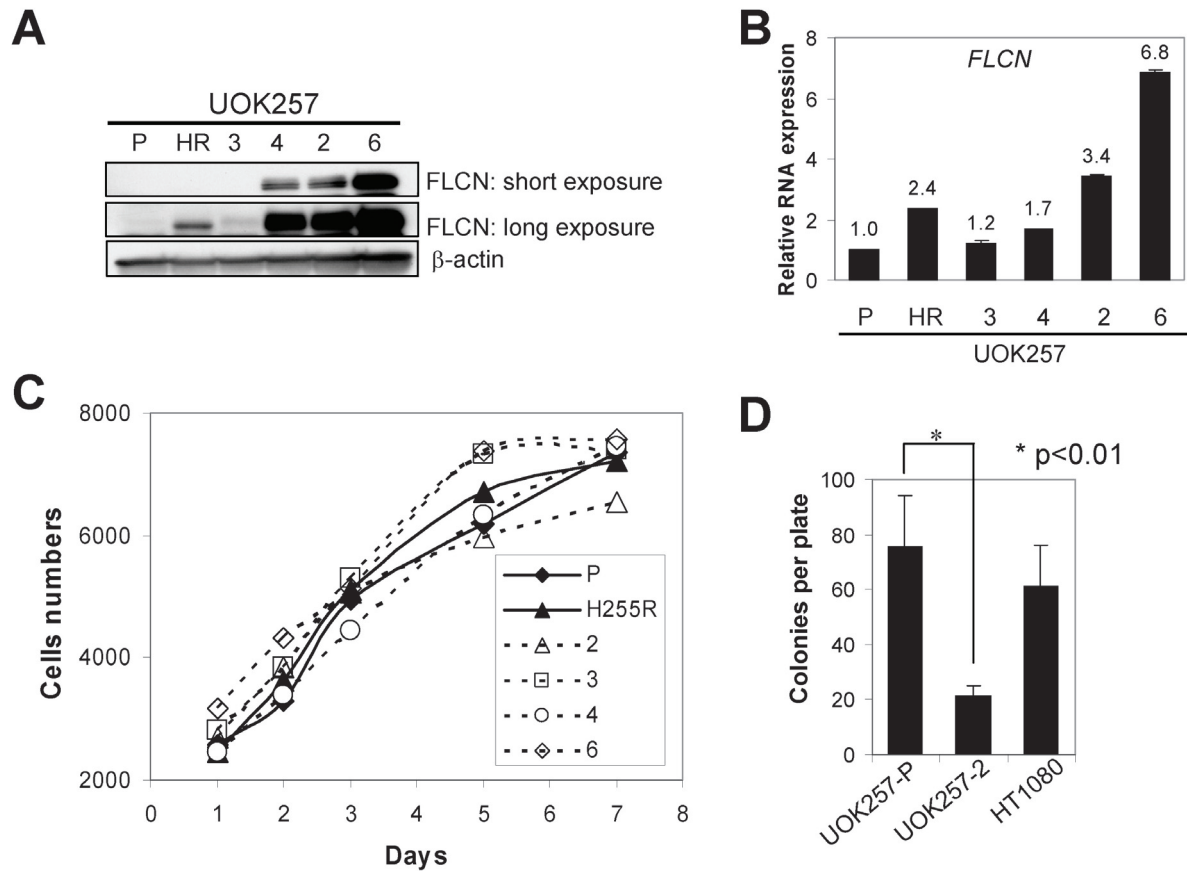


Figure 1 Characterization of the UOK257 cell lines. (A) FLCN protein expression in the UOK257 cell lines restored with wildtype or mutant *FLCN*. P, parental; HR, FLCN (H255R) mutant; 2, 3, 4 and 6, wildtype *FLCN*. (B) *FLCN* mRNA level was measured by quantitative RT-PCR. Columns, mean; bars, +SD (n = 3). (C) Cell growth of the UOK257 cell lines *in vitro*. Points, mean (n = 4). (D) Colony formation assay of the UOK257 cell lines and control HT1080 cell line in soft-agar culture. Columns, mean; bars, +SD (n = 3).

from both the transgene and endogenous *FLCN* was measured by quantitative RT-PCR. The total *FLCN* mRNA expression was increased by the expression of the wild-type *FLCN* or mutant *FLCN-H255R* transgene to varying degrees in the cell lines (P = 3 < 4 < H255R < 2 < 6) (Fig. 1B).

Anchorage independent but not dependent growth of UOK257 cells was inversely correlated with wild-type *FLCN* expression

We examined whether introduction of wild-type or mutant *FLCN* could affect anchorage dependent and independent growth of UOK257 cells. Anchorage dependent growth of UOK257 cells on culture dishes was not affected by the expression of wild-type or mutant *FLCN* (Fig. 1C). However, anchorage independent growth measured as colony numbers on soft agar was low in the wild-type *FLCN* cell line UOK257-2, which expressed high levels of *FLCN*, compared to the parental UOK257 cell line

(UOK257-P) (Fig. 1D). One of the characteristics of the UOK257 cells was a slow growth rate (doubling time, 52+/- 9 hrs) on culture dishes. These cells also grew very slowly in soft agar taking 3-4 weeks to reach a countable colony size. By comparison, HT-1080 cells derived from a fibrosarcoma grew faster in soft agar and often generated larger colonies (data not shown).

Tumor growth was suppressed by wild-type *FLCN* but not by mutant *FLCN-H255R* expression

To examine whether the tumorigenic potential of UOK257 cells was affected by wild-type or mutant *FLCN*, mutant *FLCN* (UOK257-P and -H255R) and wild-type *FLCN*-expressing cells (UOK257-2, -3, -4 and -6) were injected subcutaneously with matrigel into athymic nude mice and tumor growth was measured for up to one year. Most of the mice injected with UOK257-P and UOK257-H255R cells developed solid tumors, although some animals only developed flat patches of tumor cells (See addi-

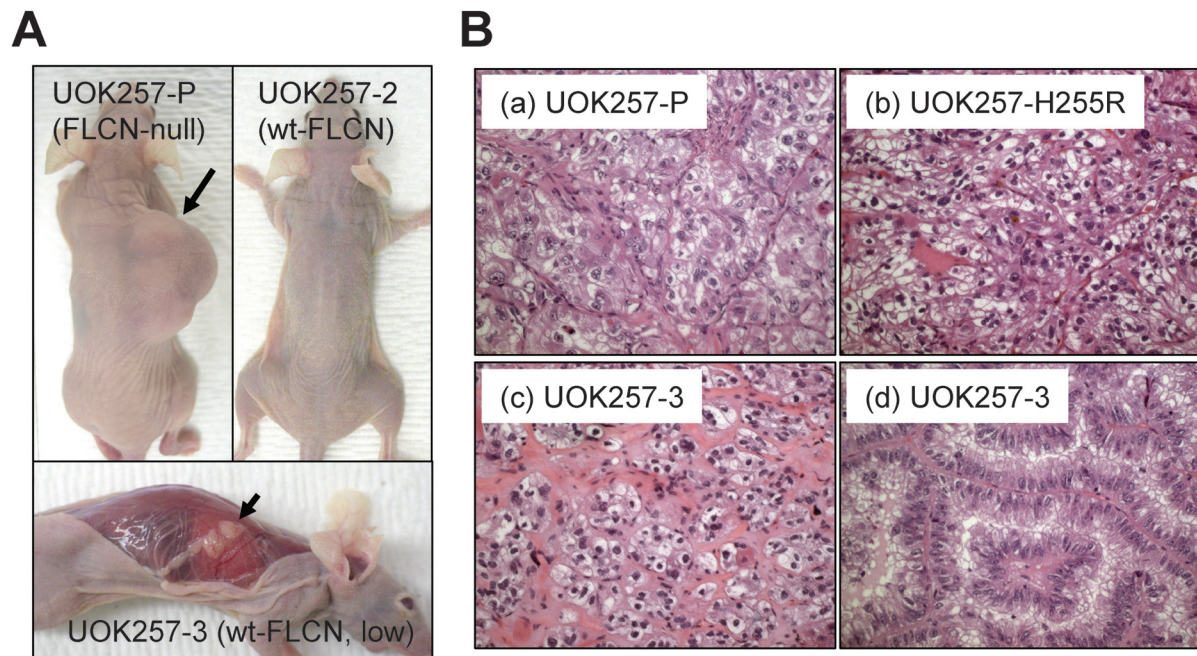


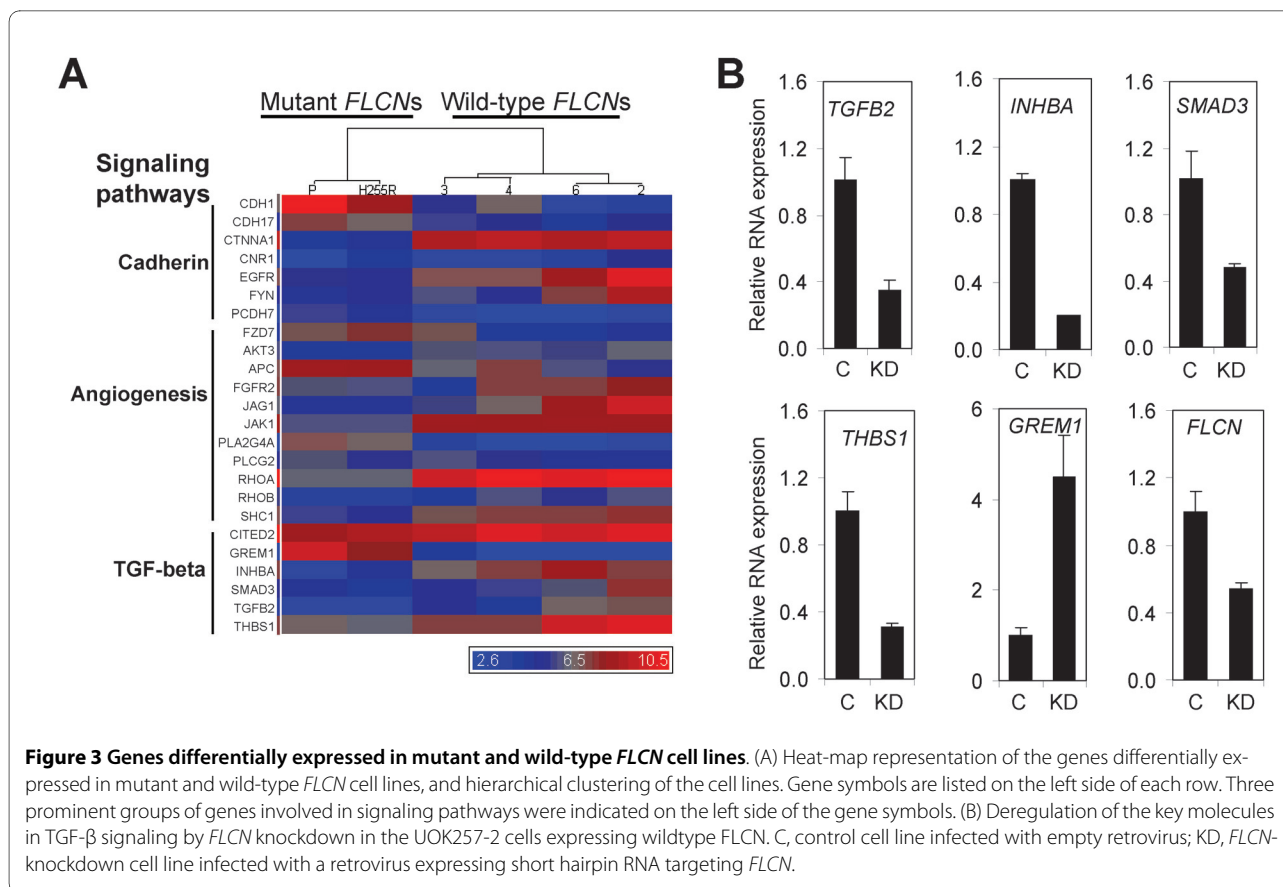
Figure 2 Suppression of tumorigenesis by re-introduction of wild-type *FLCN* not mutant *FLCN* in the *FLCN*-null cell line, UOK257. (A) Tumorigenesis of UOK257 cells in nude mice was suppressed by wild-type *FLCN*. Arrow indicates a tumor from UOK257-P cells. Arrowhead indicates a flat patch of tumor cells from UOK257-3 cells. (B) Histologies of the tumors from different clones of UOK257 cells. (a) high, (b) medium, and (c) low grade clear cell histologies; (d) papillary RCC.

tional file 1: Table S1 and Fig. 2A). All of these tumors were high grade and exhibited clear cell histology (See additional file 1: Table S1 and Fig. 2B). On the other hand, the mice injected with UOK257 cells expressing a high level of *FLCN* (UOK257-2, -4 and -6) did not develop tumors (See additional file 1: Table S1 and Fig. 2A). Instead, flat masses of cells only rarely containing tumor cells were observed in 6 of 35 (17%) of the animals. The mice injected with UOK257-3 cells expressing a very low level of *FLCN* developed solid tumors with low incidence (2/10) and smaller size (See additional file 1: Table S1). In some animals, UOK257-3 cells grew as flat patches (5/10; Fig. 2A) and exhibited mostly clear cell histology with varying grades (low to high; Fig. 2B).

We investigated whether wild-type or mutant *FLCN* transgenes, or the endogenous mutant *FLCN* genes were lost during tumor progression. Genomic DNA was isolated from the tumors or tumor cell patches and PCR was performed using a primer pair specific to exon 10 and exon 11 that amplifies 664 bp of the endogenous *FLCN* gene or 99 bp of the *FLCN* transgene. All of the tumors from the cell lines retained the endogenous mutant *FLCN* gene (c.1285dupC) and all of the tumors from UOK257-3 and UOK257-H255R retained their respective transgenes (See additional file 1: Fig. S1).

Gene expression microarray analysis identified genes regulated by *FLCN* and the pathways in which they interact

To identify the genes regulated by *FLCN* expression, we performed gene expression microarray analysis using RNAs isolated from the UOK257 cell lines expressing either no, mutant or wild-type *FLCN*. We identified a total of 439 genes, which were up or down-regulated more than 2-fold in the mutant and *FLCN*-null cell lines (UOK257-P and UOK257-H255R) compared to the wild-type *FLCN* cell lines (UOK257-2, -3, -4 and -6) (See additional file 2: Table S2). To explore the biological processes and pathways regulated by *FLCN*, the genes were subclassified with the help of "Panther Classification System" <http://www.pantherdb.org> and three prominent pathways were identified, namely cadherin signaling, TGF- β signaling, and angiogenesis (Fig. 3A). Although all three of these pathways are important in tumorigenesis, we focused on the genes involved in TGF- β signaling (See additional file 1: Fig. S2). We found that *TGF- β 2* (*TGFB2*), *Inhibin β A* (*INHBA*, a subunit of activin A), *SMAD3* (*SMAD3*) and *thrombospondin-1* (*THBS1*) were down-regulated, and *Gremlin* (*GREM1*) was upregulated in *FLCN*-null and mutant *FLCN*-H255R UOK257 cells compared with *FLCN*-restored UOK257 cells. We confirmed the *GREM1*, *TGFB2*, *INHBA*, *SMAD3* and *THBS1*



microarray results by quantitative RT-PCR (See additional file 1: Fig. S3).

Knockdown of FLCN deregulates TGFB2, INHBA, GREM1, THBS1 and SMAD3 expression in FLCN-restored UOK257 cells

We next examined whether the expression levels of TGFB2, INHBA, THBS1, GREM1 and SMAD3 could be deregulated by knockdown of FLCN in FLCN-restored UOK257 cells. A FLCN-knockdown cell line was generated by introducing a retrovirus that expressed shRNA against FLCN in FLCN-restored cells (UOK257-2). In addition to reduced expression of FLCN, the expression of TGFB2, INHBA, THBS1 and SMAD3 was decreased and the expression of GREM1 was increased in the FLCN-knockdown cell line (Fig. 3B).

GREM1, TGFB2, INHBA, THBS1 and SMAD3 expression levels were down-regulated in BHD-associated renal tumors

In order to determine whether the genes that were regulated by FLCN in *in vitro* cell culture were differentially expressed in renal tumors from BHD patients compared to normal kidney parenchyma, we performed quantitative RT-PCR using RNA isolated from these tissues. GREM1, TGFB2, INHBA, THBS1 and SMAD3 RNA expression levels were significantly lower in the BHD

renal tumors compared to normal kidney tissue (Fig. 4A). However, FLCN RNA levels were not statistically different ($P = 0.316$). In support of the RT-PCR data, immunohistochemical staining of TGF- β 2 showed strong TGF- β 2 expression in the normal renal tubules but reduced expression in the tumors from BHD patients (Fig. 4B, left panel). In addition, the UOK257 xenograft tumors expressed lower levels of TGFB2 compared to normal mouse kidney (Fig. 4B, right panel).

We measured protein expression of SMAD2, SMAD3, phospho-SMAD3 (pSMAD3) and FLCN in renal tumors from BHD patients ($n = 11$) and normal human kidney tissue ($n = 5$). pSMAD3 levels were high in 3 out of 5 normal kidneys but only 1 (T11) of 11 tumors (Fig. 4C). In addition, SMAD3 levels and SMAD3/SMAD2 ratios were higher in normal kidneys compared to the tumors. On the other hand FLCN protein levels were lower or undetectable in all tumors except T11, in which a moderate level of FLCN expression was detected along with high levels of pSMAD3 and SMAD3 (Fig. 4C). Therefore it is likely that the T11 tumor was contaminated with normal kidney tissue.

In order to investigate whether receptor mediated TGF- β signaling was disrupted by the loss of FLCN expression, TGF- β induced SMAD3 phosphorylation was

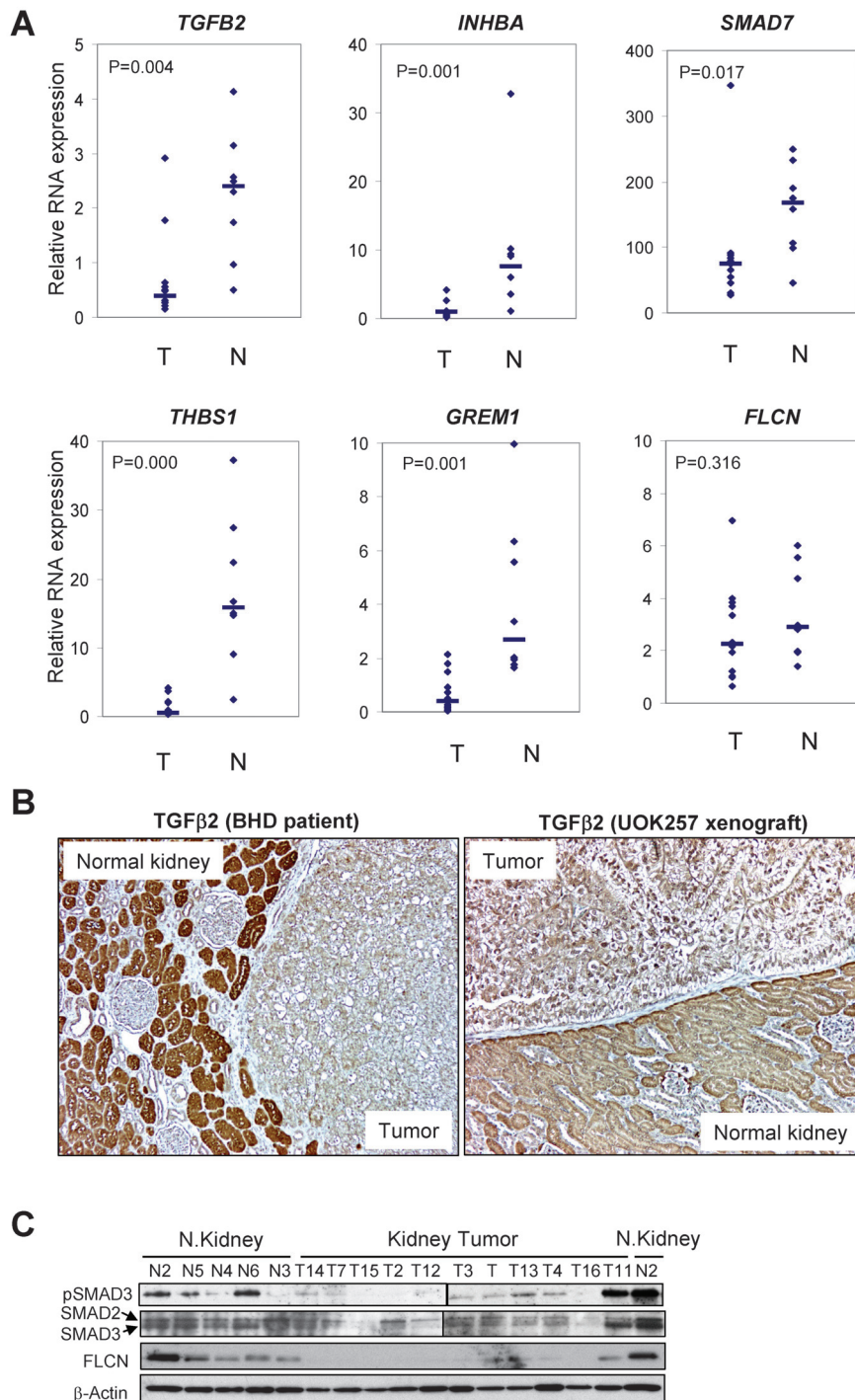


Figure 4 Genes involved in TGF- β signaling and the encoded proteins dysregulated in renal tumors from BHD patients. (A) Quantitative RT-PCR of *TGF β 2*, *INHBA*, *SMAD3*, *THBS1*, *GREM1* and *FLCN* expression levels in human BHD tumors (T, n = 12) and normal kidneys (N, n = 8). Gene expressions were normalized against cyclophilin gene expression and relative expressions were calculated against gene expression in UOK257 cells. Median values of expression levels were indicated with short lines. Points, mean expression of each sample. P value, Mann-Whitney U-test. (B) Reduced expression of TGF- β 2 in the BHD tumors (left panel) and the UOK257 xenograft tumors (right panel) compared to normal renal tubules as shown by immunohistochemical staining. Five BHD tumors were examined and a representative immunostained image is shown. (C) Positive correlation of pSMAD3 and SMAD3 with FLCN expression in human BHD kidney tumors and normal kidney tissue. pSMAD3, SMAD2, SMAD3 and FLCN protein levels were measured by western blot analysis in normal kidney tissue (n = 5) and BHD tumors (n = 11).

examined in UOK257 cells and compared to UOK257-2 cells. TGF- β induced SMAD3 phosphorylation was not affected by FLCN inactivation (Fig. 5A). In addition, BMP4 induced SMAD1/5/8 phosphorylation was not disrupted by loss of FLCN expression (data not shown). We then examined whether TGF- β induced gene expression was dysregulated in *FLCN-null* UOK257 cells. *SMAD7*, an inhibitory SMAD, is known to be induced by TGF- β . *SMAD7* expression was induced in both UOK257 and UOK257-2 cell lines (Fig. 5B). However the basal and the maximal induced levels of *SMAD7* were two fold greater in UOK257-2 cells than in UOK257 cells. Similar to *SMAD7*, *TGFB2* and *INHBA* expressions were induced by TGF- β in both cell lines but their basal and maximal levels of expression were substantially higher (5.8- to 23-fold) in *FLCN*-restored UOK257-2 cells compared with *FLCN-null* UOK257 cells (Fig. 5B).

Since FLCN and FNIP1/2 can complex with AMPK, and phosphorylation of these proteins is affected by AMPK and mTOR signaling, we wanted to know whether AMPK and mTOR signaling affected the expression of *TGFB2* and *INHBA* in a *FLCN*-dependent manner. Interestingly, both *TGFB2* and *INHBA* were induced by the AMPK activator AICAR but reduced by the AMPK inhibitor Compound C in UOK257-2 cells expressing *FLCN* as well as in cells in which *FLCN* expression was knocked down by a retrovirus expressing *FLCN* shRNA [UOK257-2/*FLCN*-KD; Fig. 5C(a) and Fig. 5C(b)]. Rapamycin, an inhibitor of mTOR signaling, also induced *TGFB2* and *INHBA* expression in both *FLCN*-expressing UOK257-2 and UOK257-2/*FLCN*-KD cells [Fig. 5C(a) and Fig. 5C(b)]. However, the basal and maximal levels of induction of *TGFB2* and *INHBA* by AICAR and rapamycin were higher in *FLCN*-expressing UOK257-2 cells compared to UOK257-2/*FLCN*-KD cells [Fig. 5C(a) and Fig. 5C(b)]. Similar results were obtained from an experiment using UOK257 *FLCN-null* and UOK257-2 *FLCN*-expressing cell lines. Interestingly, AICAR induced *TGFB2* and *INHBA* expression in UOK257-2 cells but not in UOK257 cells [Fig. 5C(c) and Fig. 5C(d)].

Activin A but not TGF- β 2 suppressed anchorage-independent growth of UOK257 cells

Initially, in order to confirm that protein expression levels were consistent with the mRNA expression levels, we measured secreted TGF- β 2 and activin A levels in the media of UOK257 and UOK257-2 cells by ELISA. In accordance with their mRNA expression, TGF- β 2 and activin A protein expression levels were lower in UOK257 cells compared to UOK257-2 cells (Fig. 6A and 6B). Since both TGF- β 2 and activin A have been reported to suppress cell growth, we examined their effect on growth of UOK257 cells. To evaluate the growth suppressive effects of TGF- β 2 and activin A, UOK257 cells were treated with

TGF- β 2 or activin A and cultured for 4 weeks in soft-agar. Unexpectedly, TGF- β 2 appeared to increase colony formation of UOK257 cells at both 1 ng/ml and 5 ng/ml (Fig. 6C). However, activin A reduced colony formation at 1 ng/ml and completely suppressed colony formation at 5 ng/ml (Fig. 6D).

Discussion

UOK257 is the only renal cancer cell line available to date that has been established from a BHD patient's tumor tissue. This cell line is particularly valuable for study of the biological role of *FLCN* inactivation in tumorigenesis because it harbors a *FLCN* mutation predicted to produce only truncated mutant protein and induces the growth of tumors *in vivo* with histology resembling the BHD-associated renal tumor from which it was derived [23]. In this study, we have established and characterized UOK257 cell lines in which wild-type or mutant *FLCN* was stably expressed. Although anchorage dependent cell growth *in vitro* was not affected by wild-type *FLCN* expression, cell growth *in vivo* and anchorage-independent growth in soft agar were severely diminished by the expression of wild-type *FLCN*. We have searched for downstream target genes regulated by *FLCN* through gene expression microarray analysis and identified a number of genes that were differentially expressed in wild-type *FLCN* (UOK257-2, -4, and -6) compared with mutant *FLCN* and *FLCN-null* (UOK257-H255R and -P) cells. We found three prominent groups of genes involved in cadherin signaling, TGF- β signaling, and angiogenesis. Notably, several key genes involved in TGF- β signaling, such as *TGFB2*, *INHBA*, *THBS1* and *SMAD3*, were down-regulated in *FLCN-null* and mutant *FLCN* cells as well as in the BHD-associated renal tumors. Consistently, *GREM1*, the antagonist of BMP that signals through SMADs was highly up-regulated in mutant *FLCN* and *FLCN-null* UOK257 cells although its expression was low in BHD-associated renal tumors.

We observed that the expression level of FLCN is important for tumor suppression, since the UOK257 cell lines (UOK257-4, -2 and -6) expressing high levels of FLCN did not develop tumors whereas the UOK257-3 cell line expressing a very low level of FLCN, did develop tumors with a low incidence (2 out of 10). It is likely that the FLCN expression level in UOK257-3 cells is marginal for tumor suppression, allowing tumor growth in some animals but suppressing tumor growth in others. In support of this idea, the expression levels of the downstream target genes in UOK257-3 cells were either similar to *FLCN-null* and *FLCN* mutant cells (UOK257-P and UOK257-H255R), or midway between the *FLCN-null-FLCN* mutant group and the *FLCN*-restored group, which expressed high levels of FLCN (UOK257-2 and UOK257-6) (See additional file 1: Fig. S3).

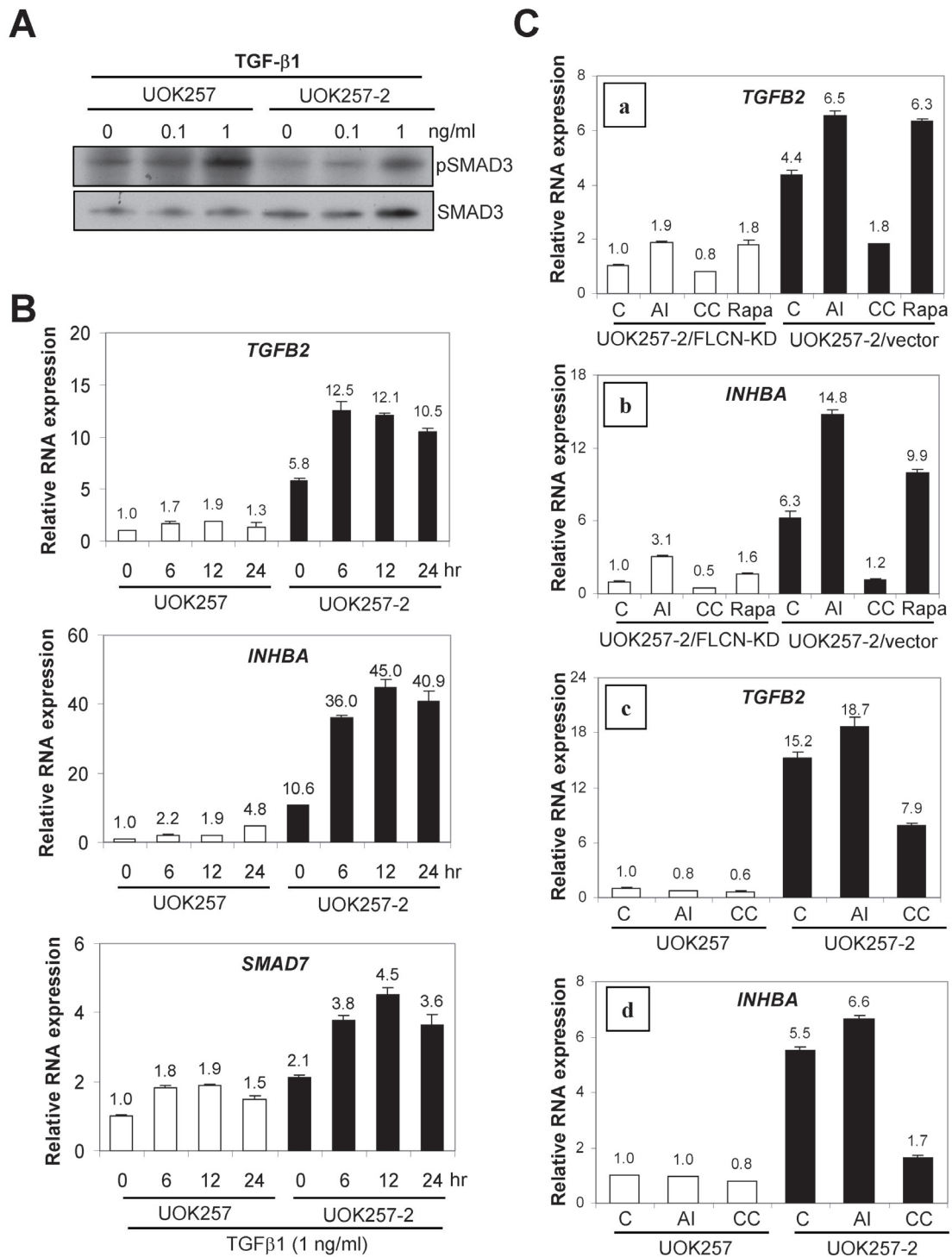


Figure 5 TGF- β 1 induced SMAD3 phosphorylation and effects of AICAR, Compound C and rapamycin on TGF- β 1 induction of *TGFB2* and *INHBA* in *FLCN*-null and *FLCN*-expressing cells. (A) TGF- β 1 induced SMAD3 phosphorylation in UOK257 and UOK257-2 cells. Cells were treated with 0, 0.1 and 1 ng/ml of TGF- β 1 for 1 hr. (B) TGF- β 1 induced *TGFB2*, *INHBA* and *SMAD7* mRNA expression in UOK257 and UOK257-2 cells. Cell were treated with 1 ng/ml of TGF- β 1 for 0, 6, 12 and 24 hr after serum starvation for 12 hr. (C) (a and b) Cells were serum-starved for 24 hr and treated with 0.5 mM AICAR (AI), 20 μ M Compound C (CC) or 1 nM rapamycin (Rapa) for 12 hr. UOK257-2/vector, UOK257-2 cells infected with empty retrovirus; UOK257-2/*FLCN*-KD, UOK257-2 cells infected with retrovirus expressing shRNA targeting *FLCN*. (c and d) Cells were serum-starved for 15 hr and treated with 0.5 mM AICAR or 20 μ M Compound C (CC) for 6 hr.

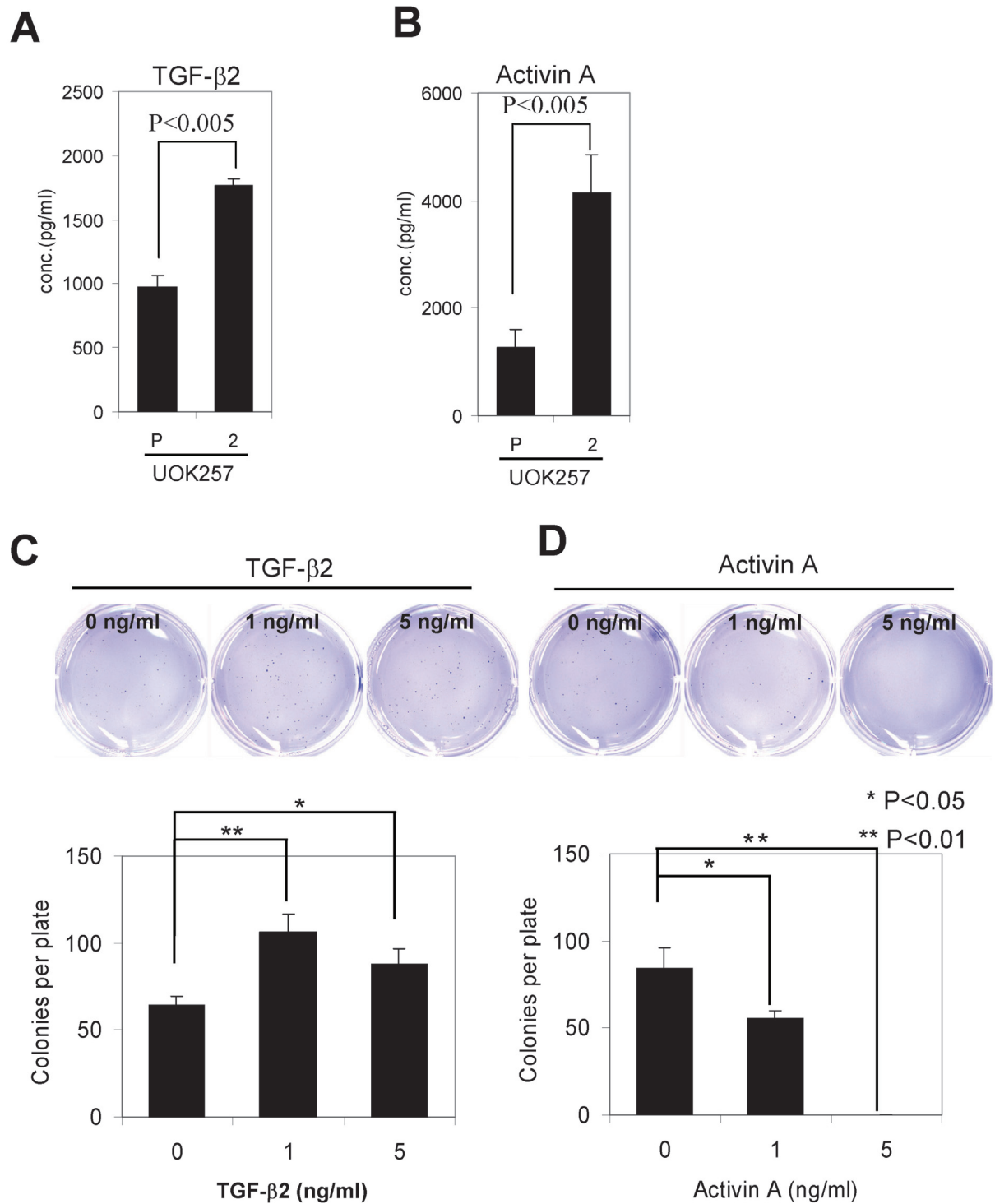


Figure 6 Higher levels of secreted TGF-β2 and activin A proteins were detected in *FLCN*-restored UOK257-2 cells compared to the parental UOK257 cell line. (A) TGF-β2 and (B) activin A levels in cultured media were measured by ELISA (R&D systems). (C) TGF-β2 induced anchorage independent growth of UOK257 cells. However, (D) activin A suppressed anchorage independent growth of UOK257 cells. UOK257 cells (2,500 cells) were plated in soft-agar and cultured for 4 weeks in the presence of TGF-β2 or Activin A and stained with crystal violet. N = 4 for each treatment.

UOK257-H255R cells expressed a low level of FLCN protein resulting in loss of tumor suppressor function and deregulation of TGF- β signaling, even though they expressed slightly more *FLCN* mRNA than UOK257-4 cells (Fig.1A and 1B). These data suggest that FLCN-H255R missense mutant protein found in the canine model of BHD syndrome is less stable than wild-type FLCN. Thus decreased stability of mutant FLCN is likely to contribute to the loss of FLCN tumor suppressor function.

It has been suggested that *Drosophila BHD (dBHD)* regulates germline stem cell (GSC) maintenance downstream or in parallel with Jak/Stat and dpp (BMP ortholog in *Drosophila*) signaling [24]. *dBHD* knockdown by siRNA suppressed overproliferation of GSC induced by hyperactivation of Jak/Stat or dpp signaling. Interestingly, *Jak1*, encoding a kinase that transmits signals by phosphorylating Stats in cells, was identified by microarray analysis as a downregulated gene in the mutant *FLCN* and *FLCN*-null cells (Fig. 3A). We also identified several key genes in TGF- β /BMP signaling such as *TGFB2*, *INHBA*, *THBS1* and *SMAD3* (a regulatory SMAD) that were down-regulated in the mutant *FLCN* and *FLCN*-null cells. On the other hand, *GREMI*, which encodes a protein that binds and inactivates BMP activity, was upregulated in the mutant and *FLCN*-null cells. Thus the genetic interactions between *dBHD*, and Jak/Stat and dpp (BMP) signaling may be partially explained by *FLCN* deregulation of genes involved in these pathways.

The human TGF- β superfamily consists of 42 members including TGF- β s, activins, bone morphogenic proteins (BMPs), and growth and differentiating factors (GDFs) [25,26]. TGF- β s are multi-functional cytokines that modulate cell proliferation, apoptosis, differentiation, adhesion and migration. TGF- β shows a biphasic effect on tumor cell growth [27]. It inhibits tumor cell growth in the early phase of tumorigenesis but promotes cell growth when cells escape the anti-proliferative effect of TGF- β in the late phase of tumorigenesis. Interestingly, TGF- β 2 induced anchorage independent growth of UOK257 cells (Fig. 6C), suggesting that UOK257 cells are refractory to the growth suppressive effect of TGF- β . The possibility exists that reduced expression of TGF- β 2 in *FLCN*-null cells contributed to cell growth in the early phase of tumorigenesis.

Disruption of TGF- β signaling has been reported in many cancers. TGF- β type II receptor is often mutated in gastro-intestinal cancers [28-30]. Mutations in SMAD2 or SMAD4 occur frequently in pancreatic and colorectal carcinomas [31-33]. Although mutations in SMAD3 have not been reported, 3 out of 8 (37.5%) gastric tumors in one report showed low to undetectable levels of SMAD3 expression and restoration of SMAD3 suppressed tumorigenicity of gastric cancer cells [34]. Low levels of

SMAD3 expression in the BHD tumors may contribute to the ability of these renal tumor cells to escape the growth suppressive effect of TGF- β .

Activins are homo- or heterodimeric proteins consisting of two β subunits (β A and β B), while inhibins are heterodimers of α and β subunits (inhibin-A [$\alpha\beta$ A] and inhibin-B [$\alpha\beta$ B]) [35]. *INHBA* is one of the β subunits (β A) that comprise activin A (β A β A), activin AB (β A β B) and inhibin A ($\alpha\beta$ A). Activin A regulates kidney organogenesis, tubular regeneration and renal fibrosis [reviewed in [36]]. Activins also induce apoptosis, and inhibit cell proliferation and tumor growth in numerous types of cells. In contrast to TGF- β 2, activin A inhibited growth of UOK257 cells in soft-agar (Fig. 6D), suggesting that activin signaling is intact in UOK257 cells. Thus reduced expression of *INHBA*, β subunit of activin A, in UOK257 cells and BHD tumors, may be permissive for tumor cell growth. It would be interesting to examine whether activin A treatment can suppress BHD tumor growth *in vivo*.

Thrombospondin-1 (THBS1) is one of the five members of a family of thrombospondins that mediate the interaction of normal and cancer cells with the extracellular matrix and surrounding tissue. THBS1 suppresses tumor growth by activating TGF- β and by inhibiting angiogenesis. THBS1 exerts direct effects on endothelial cell migration and survival through interaction with CD36. It also reduces availability of VEGF by inhibiting MMP9, therefore releasing VEGF from the extracellular matrix. There are several reports suggesting that reduced expression of THBS1 or hypermethylation of *THBS1* is associated with poor prognosis of cancer patients and higher tumor grade [37-40]. Accordingly THBS1 regulation may be an important part of the tumor suppressor function of *FLCN*.

We examined whether TGF- β signaling is dysregulated by the inactivation of the *FLCN* gene. TGF- β or BMP4 induced SMAD3 or SMAD1/5/8 phosphorylation was not affected by FLCN inactivation suggesting receptor mediated SMAD phosphorylation is not altered by FLCN. However, several genes whose expressions are regulated by TGF- β were dysregulated by the inactivation of FLCN. The basal and maximal induced levels of the downstream target genes (*TGFB2*, *INHBA* and *SMAD7*) regulated by TGF- β were reduced in cells with FLCN inactivation. These data suggest that FLCN may regulate TGF- β signaling through a non-SMAD mediated mechanism. As a result of such regulation, the level of TGF- β ligands, such as TGF- β 2 and activin A, could be highly induced in cells expressing *FLCN* by a positive feedback control.

A possible function of FLCN in energy sensing and metabolism has been suggested by its interaction with AMPK through FNIP1/2 and by the observation that

FLCN phosphorylation is affected by mTOR signaling (20-21). Here we demonstrated that an AMPK activator, AICAR, and an AMPK inhibitor, Compound C, as well as an mTOR inhibitor, rapamycin, affected the expression of the same key molecules involved in TGF- β signaling, which appear to be regulated by FLCN. Thus FLCN could be a key molecule connecting energy-sensing signals to growth suppressive TGF- β signaling.

Conclusions

Here for the first time we have confirmed the tumor suppressor function of *FLCN* *in vivo* and identified new potential FLCN downstream targets in the TGF- β signaling pathway. This study will provide a foundation for understanding the pathogenesis of BHD syndrome at the molecular level and be useful for finding therapeutic targets for treating BHD-associated kidney cancer and potentially, sporadic chromophobe RCC. We are currently analyzing the mechanism by which FLCN regulates these target genes and the functional importance of deregulation of these FLCN target genes in tumorigenesis.

Methods

Establishment of cell lines, cell culture, and cell growth

Wild-type or mutant (H255R) *FLCN* cDNA was transduced into UOK257 cells using the ViraPower Lentiviral expression system (Invitrogen) following the manufacturer's protocols. Stable clones were selected using Blasticidin S (1.5 μ g/ml). Cells were maintained in DMEM medium supplemented with 10% fetal bovine serum (FBS) and penicillin/streptomycin. To evaluate growth rate in culture, cells (2×10^3) were plated in each well of five 96 well plates, cultured, and cell numbers were measured at day 1, 2, 3, 5 and 7 using the CyQuant Cell Proliferation Assay Kit (Molecular Probes). Adenoviral vectors (pAd/CMV/V5-DEST) expressing wild-type and mutant (c.1285dupC) *FLCN* were generated using the ViraPower Adenoviral Gateway system (Invitrogen) following the manufacturer's protocol. A retroviral shRNA vector targeting *FLCN* was generated by inserting double stranded oligonucleotides (forward sequence, 5'-GATCCCC GGT-GTTTGAGGCAGAGCAGTTCAAGAGACTGCTCTG CCTCAAACACCTTTTTA-3' and reverse sequence, 5'-GCTTAAAAGGTGTTTGAGGCAGAGCAGTCTCT-TGAACTGCTCTGCCTCAAACACCGGG-3') into HindIII and BglII sites of pSuper-Retro vector (Oligoengine) following the manufacturer's instruction. UOK257-2 cells were infected with the *FLCN* shRNA vectors and selected against puromycin (7.5 μ g/ml).

Colony formation assay

UOK257 cells (5×10^3) were suspended in 1.5 ml of 0.3% agar in DMEM containing 10% FBS and were overlaid on 1.5 ml of pre-solidified 0.5% agar in the same medium.

Cells were cultured in a CO₂ incubator for 3-4 weeks. Colonies were stained for 1 hour with 0.02% crystal violet solution dissolved in 10% neutral formalin. Colony number was counted under a dissection microscope after washing with PBS three times.

Tumor growth in nude mice

Cells (1×10^6) suspended with basement membrane matrix (BD Biosciences) were injected subcutaneously into the flanks of athymic nude mice. Tumor growth was measured once a week and mouse health was monitored daily. Mice bearing tumors larger than 2 cm, or showing severe health problems, were sacrificed and examined. Otherwise tumor growth was monitored for up to one year after injection. Tumors were fixed in 10% buffered formalin solution for histological examination and flash frozen in liquid nitrogen for protein and RNA extraction. Animal care procedures followed NCI-Frederick Animal Care and Use Committee guidelines.

Immunoblotting

Cells were harvested and lysed in RIPA buffer (50 mM Tris-Cl, pH 8.0 with 150 mM NaCl, 1.0% NP-40 and 0.5% sodium deoxycholate) or 1 \times SDS sample buffer (Biorad). Cell lysates were resolved by 4-20% SDS PAGE and blotted onto PVDF membrane. The following antibodies were used in this study: anti-FLCN mouse monoclonal [20], anti- β -actin (Sigma), anti-SMAD2/3 (Santa Cruz, sc-6032), and anti-pSMAD2/3 (Santa Cruz, sc-11769) antibodies. Immunoblots were processed by the ECL Detection System (Pierce) according to the manufacturer's protocols.

Immunohistochemistry

Paraffin tissue sections were deparaffinized, rehydrated in graded alcohol and boiled in Tris-EDTA buffer pH 8.0 for 20 min at 90°C for antigen retrieval. After blocking, sections were probed with primary antibodies overnight and then incubated with HRP-polymer conjugated secondary antibodies. Diaminobenzidine hydrochloride (DAB) was used as a substrate for peroxidase. Sections were then briefly counterstained with hematoxylin and permanently mounted for observation.

ELISA

Cells (2×10^5) were cultured on 6 well plates for 3 days and culture media was collected for assay. TGF- β 2, and activin A levels in the media were quantified by Human TGF- β 2 DuoSet (R&D systems) and activin A DuoSet (R&D systems), respectively, following the manufacturer's instruction.

RNA isolation, microarray analysis and pathway analysis

Total RNAs were isolated from the UOK257 cell lines using Trizol reagent (Invitrogen) and further purified using RNeasy mini kit (QIAGEN) according to the manu-

facturer's protocols. Probes, which were generated using these RNAs, were hybridized to the Human Genome U133 Plus 2.0 arrays (Affymetrix) and processed according to recommended protocols. The CEL files were processed using the Partek Genomic Suite 6.2 (Partek Inc.). Data were transformed using a log normalization process and the differentially expressed genes were identified by Student's t-test and Mann-Whitney U-test. The genes that were differentially expressed in mutant *FLCN* cell lines (UOK257-P and -H255R) and wild-type *FLCN* cell lines (UOK257-2, -4 and -6) were used for further analysis.

Quantitative real-time reverse transcription-PCR (RT-PCR)

To confirm the microarray results, quantitative real-time reverse transcription PCR (RT-PCR) was performed. RNAs were digested with DNase I for 30 min at 37°C followed by heat denaturation at 70°C for 20 min to remove genomic DNA contamination. Total RNAs (2.5 µg) were primed with 100 ng random primers and reverse-transcribed by Superscript II reverse transcriptase (Invitrogen) at 42°C for 1 hr. The identical reactions were performed without reverse transcriptase to generate negative controls. PCR primers were generated using Primer 3 software [41] or Primer Express 3.0 (Applied Biosystems). Quantitative RT-PCR was performed with Power SYBR-Green or Taqman Gene Expression Master Mix (Applied Biosystems) using a 7300 Real-Time PCR system (Applied Biosystems) following the manufacturer's protocols. All reactions were run in triplicate using *β-actin*, *GAPDH* or *cyclophilin A* genes as internal controls. The relative level of a particular gene expression was evaluated according to the function of 2^{-ddCt} , where $ddCt$ is $dCt_{(treatment)} - dCt_{(control)}$, dCt is $Ct_{(target\ gene)} - Ct_{(GAPDH\ or\ actin)}$ and Ct is the cycle at which the threshold is crossed. The gene-specific primer pairs for the PCR reactions are as follows: *FLCN* forward 5'-TTCACGCCATTCCTA-CACCAGA-3' and reverse 5'-GCCCACAGGTTGTCAT-CACTTG-3', *GREM1* forward 5'-GCAAAACCCAGC CGCTTAA-3' and reverse 5'-TGATGGTGCGACTGTT-GCA-3', *TGFB2* forward 5'-CGAGAGGAGCGACGAA-GAGT-3' and reverse 5'-AGGGCGGCATGTCTA TTTTG-3', *THBS1* forward 5'-CCAGATCAGGCAGACACAGA-3' and reverse 5'-AGTTGTCCCGTTTCATT-GAGG-3', *INHBA* forward 5'-TGGAGTGTGATG GCAAGGTCA-3' and reverse 5'-GCATGATAGCCA-GAGGGAGCA-3', *SMAD3* forward 5'-GACGAGGTCT-GCGTGAATCC-3' and reverse 5'-GTGGCGTGGCACC AACA-3', and *GAPDH* forward 5'-TTCCACCCATG-GCAAATTC-3' and reverse 5'-CGCCCCACTT-GATTTTGGAG-3'. *SMAD7* forward 5'-CCAAGTGC AGACTGTCCAGA-3' and reverse 5'-CAGGCTCCA-GAAGAAGTTGG-3'. PCR product quality was monitored using post-PCR dissociation curve analysis.

Additional material

Additional file 1 table S1, and figures S1, S2, S3. Table S1. Frequency and characteristics of tumors that developed from different UOK257 cell lines in athymic nude mice. Figure S1. PCR amplification of endogenous *FLCN* (endo) and *FLCN* transgene (tg) from the xenograft tumors. Figure S2. Deregulation of the key molecules in TGF-β signaling by *FLCN* expression. Figure S3. Quantitative RT-PCR for *TGFB2*, *INHBA*, *THBS1*, *GREM1* and *SMAD3* in the UOK257 cell lines expressing either mutant or wild-type *FLCN*.

Additional file 2 Table S2. Table S2. The genes differentially expressed in the wild-type *FLCN* and mutant *FLCN* cell lines.

Competing interests

The authors declare that they have no competing interests.

Authors' contributions

SBH designed the experiments. SBH, VAV, HBO, JS, DTN and MB performed the experimental work. MB generated critical cell lines for the work. MJM performed histopathologic analysis. SBH wrote the manuscript. WML and LSS contributed to the design of the experiments, review of the data, scientific discussions and manuscript editing. All authors read and approved the final manuscript.

Acknowledgements

We thank the Laboratory of Molecular Technology of SAIC-Frederick, Inc. for performing microarray hybridizations and generation of data files and Louise Cromwell for excellent animal technical support. This research was supported in part by the Intramural Research Program of the NIH, National Cancer Institute, Center for Cancer Research. This project has been funded in part with federal funds from the National Cancer Institute, National Institutes of Health, under contract HHSN26120080001E. The content of this publication does not necessarily reflect the views or policies of the Department of Health and Human Services, nor does mention of trade names, commercial products, or organizations imply endorsement by the U.S. Government. NCI-Frederick is accredited by AAALAC International and follows the Public Health Service Policy for the Care and Use of Laboratory Animals. Animal care was provided in accordance with the procedures outlined in the "Guide for Care and Use of Laboratory Animals (National Research Council; 1996; National Academy Press; Washington DC).

Author Details

¹Urologic Oncology Branch, Center for Cancer Research, National Cancer Institute, 10 Center Drive MSC1107, 10/CRC/1W-5940, Bethesda, MD 20892 USA, ²Laboratory of Pathology, Center for Cancer Research, National Cancer Institute, 10 Center Drive MSC1516, 10/MCC/2B50, Bethesda, MD 20892 USA and ³Basic Science Program, SAIC-Frederick, Inc, NCI-Frederick, Frederick, MD 21702 USA

Received: 19 January 2010 Accepted: 23 June 2010

Published: 23 June 2010

References

1. Birt AR, Hogg GR, Dube WJ: Hereditary multiple fibrofolliculomas with trichodiscomas and acrochordons. *Arch Dermatol* 1977, **113**:1674-1677.
2. Toro JR, Glenn G, Duray P, Darling T, Weirich G, Zbar B, Linehan M, Turner ML: Birt-Hogg-Dube syndrome: a novel marker of kidney neoplasia. *Arch Dermatol* 1999, **135**:1195-1202.
3. Zbar B, Alvord WG, Glenn G, Turner M, Pavlovich CP, Schmidt L, Walther M, Choyke P, Weirich G, Hewitt SM, Duray P, Gabril F, Greenberg C, Merino MJ, Toro J, Linehan WM: Risk of renal and colonic neoplasms and spontaneous pneumothorax in the Birt-Hogg-Dube syndrome. *Cancer Epidemiol Biomarkers Prev* 2002, **11**:393-400.
4. Schmidt LS, Nickerson ML, Warren MB, Glenn GM, Toro JR, Merino MJ, Turner ML, Choyke PL, Sharma N, Peterson J, Morrison P, Maher ER, Walther MM, Zbar B, Linehan WM: Germline *BHD*-mutation spectrum and phenotype analysis of a large cohort of families with Birt-Hogg-Dube syndrome. *Am J Hum Genet* 2005, **76**:1023-1033.
5. Toro JR, Wei MH, Glenn G, Weinreich M, Toure O, Vocke C, Turner M, Choyke P, Merino MJ, Pinto PA, Steinberg SM, Schmidt LS, Linehan WM: *BHD* mutations, clinical and molecular genetic investigations of Birt-

- Hogg-Dube Syndrome: A new series of 50 families and a review of published reports.** *J Med Genet* 2008, **45**:321-331.
6. Pavlovich CP, Walther MM, Eyster RA, Hewitt SM, Zbar B, Linehan WM, Merino MJ: **Renal tumors in the Birt-Hogg-Dube syndrome.** *Am J Surg Pathol* 2002, **26**:1542-1552.
 7. Khoo SK, Bradley M, Wong FK, Hedblad MA, Nordenskjold M, Teh BT: **Birt-Hogg-Dube syndrome: mapping of a novel hereditary neoplasia gene to chromosome 17p12-q11.2.** *Oncogene* 2001, **20**:5239-5242.
 8. Schmidt LS, Warren MB, Nickerson ML, Weirich G, Matrosova V, Toro JR, Turner ML, Duray P, Merino M, Hewitt S, Pavlovich CP, Glenn G, Greenberg CR, Linehan WM, Zbar B: **Birt-Hogg-Dube syndrome, a genodermatosis associated with spontaneous pneumothorax and kidney neoplasia, maps to chromosome 17p11.2.** *Am J Hum Genet* 2001, **69**:876-882.
 9. Nickerson ML, Warren MB, Toro JR, Matrosova V, Glenn G, Turner ML, Duray P, Merino M, Choyke P, Pavlovich CP, Sharma N, Walther M, Munroe D, Hill R, Maher E, Greenberg C, Lerman MI, Linehan WM, Zbar B, Schmidt LS: **Mutations in a novel gene lead to kidney tumors, lung wall defects, and benign tumors of the hair follicle in patients with the Birt-Hogg-Dube syndrome.** *Cancer Cell* 2002, **2**:157-164.
 10. Khoo SK, Giraud S, Kahnoski K, Chen J, Motorna O, Nickolov R, Binet O, Lambert D, Friedel J, Lévy R, Ferlicot S, Wolkenstein P, Hammel P, Bergerheim U, Hedblad MA, Bradley M, Teh BT, Nordenskjöld M, Richard S: **Clinical and genetic studies of Birt-Hogg-Dube syndrome.** *J Med Genet* 2002, **39**:906-912.
 11. Leter EM, Koopmans AK, Gille JJ, van OSTA, Vittoz GG, David EF, Jaspars EH, Postmus PE, van Moerselaar RJ, Craanen ME, Starink TM, Menko FH: **Birt-Hogg-Dube syndrome: clinical and genetic studies of 20 families.** *J Invest Dermatol* 2008, **128**:45-49.
 12. Vocke CD, Yang Y, Pavlovich CP, Schmidt LS, Nickerson ML, Torres-Cabala CA, Merino MJ, Walther MM, Zbar B, Linehan WM: **High frequency of somatic frameshift BHD gene mutations in Birt-Hogg-Dube-associated renal tumors.** *J Natl Cancer Inst* 2005, **97**:931-935.
 13. Okimoto K, Sakurai J, Kobayashi T, Mitani H, Hirayama Y, Nickerson ML, Warren MB, Zbar B, Schmidt LS, Hino O: **A germ-line insertion in the Birt-Hogg-Dube (BHD) gene gives rise to the Nihon rat model of inherited renal cancer.** *Proc Natl Acad Sci USA* 2004, **101**:2023-2027.
 14. Lingaas F, Comstock KE, Kirkness EF, Sorensen A, Aarskaug T, Hitte C, Nickerson ML, Moe L, Schmidt LS, Thomas R, Breen M, Galibert F, Zbar B, Ostrander EA: **A mutation in the canine BHD gene is associated with hereditary multifocal renal cystadenocarcinoma and nodular dermatofibrosis in the German Shepherd dog.** *Hum Mol Genet* 2003, **12**:3043-3053.
 15. Baba M, Furihata M, Hong SB, Tessarollo L, Haines DC, Southon E, Patel V, Igarashi P, Alvord WG, Leighty R, Yao M, Bernardo M, Ileva L, Choyke P, Warren MB, Zbar B, Linehan WM, Schmidt LS: **Kidney-targeted Birt-Hogg-Dube gene inactivation in a mouse model: Erk1/2 and Akt-mTOR activation, cell hyperproliferation, and polycystic kidneys.** *J Natl Cancer Inst* 2008, **100**:140-154.
 16. Chen J, Futami K, Petillo D, Peng J, Wang P, Knol J, Li Y, Khoo SK, Huang D, Qian CN, Zhao P, Dykema K, Zhang R, Cao B, Yang XJ, Furge K, Williams BO, Teh BT: **Deficiency of FLCN in mouse kidney led to development of polycystic kidneys and renal neoplasia.** *PLoS One* 2008, **3**:e3581.
 17. Hasumi Y, Baba M, Ajima R, Hasumi H, Valera VA, Klein ME, Haines DC, Merino MJ, Hong SB, Yamaguchi TP, Schmidt LS, Linehan WM: **Homozygous loss of BHD causes early embryonic lethality and kidney tumor development with activation of mTORC1 and mTORC2.** *Proc Natl Acad Sci USA* 2009, **106**:18722-18727.
 18. Hartman TR, Nicolas E, Klein-Szanto A, Al Saleem T, Cash TP, Simon MC, Henske EP: **The role of the Birt-Hogg-Dube protein in mTOR activation and renal tumorigenesis.** *Oncogene* 2009, **28**:1594-1604.
 19. Hudon V, Sabourin S, Dydensborg AB, Kottis V, Ghazi A, Paquet M, Crosby K, Pomerleau V, Uetani N, Pause A: **Renal tumor suppressor function of the Birt-Hogg-Dube syndrome gene product folliculin.** *J Med Genet* 2010, **47**:182-189.
 20. Baba M, Hong SB, Sharma N, Warren MB, Nickerson ML, Iwamatsu A, Esposito D, Gillette WK, Hopkins RF, Hartley JL, Furihata M, Oishi S, Zhen W, Burke TR Jr, Linehan WM, Schmidt LS, Zbar B: **Folliculin encoded by the BHD gene interacts with a binding protein, FNIP1, and AMPK, and is involved in AMPK and mTOR signaling.** *Proc Natl Acad Sci USA* 2006, **103**:15552-15557.
 21. Hasumi H, Baba M, Hong SB, Hasumi Y, Huang Y, Yao M, Valera VA, Linehan WM, Schmidt LS: **Identification and characterization of a novel folliculin-interacting protein FNIP2.** *Gene* 2008, **415**:60-67.
 22. van Slegtenhorst M, Khabibullin D, Hartman TR, Nicolas E, Kruger WD, Henske EP: **The Birt-Hogg-Dube and tuberous sclerosis complex homologs have opposing roles in amino acid homeostasis in *Schizosaccharomyces pombe*.** *J Biol Chem* 2007, **282**:24583-24590.
 23. Yang Y, Padilla-Nash HM, Vira MA, Abu-Asab MS, Val D, Worrell R, Tsokos M, Merino MJ, Pavlovich CP, Ried T, Linehan WM, Vocke CD: **The UOK 257 cell line: a novel model for studies of the human Birt-Hogg-Dube gene pathway.** *Cancer Genet Cytogenet* 2008, **180**:100-109.
 24. Singh SR, Zhen W, Zheng Z, Wang H, Oh SW, Liu W, Zbar B, Schmidt LS, Hou SX: **The *Drosophila* homolog of the human tumor suppressor gene BHD interacts with the JAK-STAT and Dpp signaling pathways in regulating male germline stem cell maintenance.** *Oncogene* 2006, **25**:5933-5941.
 25. Derynck R, Feng XH: **TGF-beta receptor signaling.** *Biochim Biophys Acta* 1999, **1333**:F105-150.
 26. Shi Y, Massague J: **Mechanisms of TGF-beta signaling from cell membrane to the nucleus.** *Cell* 2003, **113**:685-700.
 27. de Caestecker MP, Piek E, Roberts AB: **Role of transforming growth factor-beta signaling in cancer.** *J Natl Cancer Inst* 2000, **92**:1388-1402.
 28. Markowitz S, Wang J, Myeroff L, Parsons R, Sin L, Lutterbaugh J: **Inactivation of the type II TGF-beta receptor in colon cancer cells with microsatellite instability.** *Science* 1995, **268**:1336-1338.
 29. Parsons R, Myeroff LL, Liu B, Willson JK, Markowitz SD, Kinzler KW, Vogelstein B: **Microsatellite instability and mutations of the transforming growth factor beta type II receptor gene in colorectal cancer.** *Cancer Res* 1995, **55**:5548-5550.
 30. Lu SL, Akiyama Y, Nagasaki H, Saitoh K, Yuasa Y: **Mutations of the transforming growth factor-beta type II receptor gene and genomic instability in hereditary nonpolyposis colorectal cancer.** *Biochem Biophys Res Commun* 1995, **216**:452-457.
 31. Hahn SA, Schutte M, Hoque AT, Moskaluk CA, da Costa LT, Rozenblum E, Weinstein CL, Fischer A, Yeo CJ, Hruban RH, Kern SE: **DPC4, a candidate tumor suppressor gene at human chromosome 18q21.1.** *Science* 1996, **271**:350-353.
 32. MacGrogan D, Pegram M, Slamon D, Bookstein R: **Comparative mutational analysis of DPC4 (Smad4) in prostatic and colorectal carcinomas.** *Oncogene* 1997, **15**:1111-1114.
 33. Han SU, Kim HT, Seong DH: **Loss of the Smad3 expression increases susceptibility to tumorigenicity in human gastric cancer.** *Oncogene* 2004, **23**:1333-1341.
 34. Takagi Y, Kohmura H, Futamura M, Kida H, Tanemura H, Shimokawa K, Saji S: **Somatic alterations of the DPC4 gene in human colorectal cancers in vivo.** *Gastroenterology* 1996, **111**:1369-1372.
 35. Chen YG, Wang Q, Lin SL, Chang CD, Chuang J, Ying SY: **Activin signaling and its role in regulation of cell proliferation, apoptosis, and carcinogenesis.** *Exp Biol Med (Maywood)* 2006, **231**:534-544.
 36. Maeshima A, Miya M, Mishima K, Yamashita S, Kojima I, Nojima Y: **Activin A: autocrine regulator of kidney development and repair.** *Endocr J* 2008, **55**:1-9.
 37. Ioachim E, Michael MC, Salmas M, Damala K, Tsanou E, Michael MM, Malamou-Mitsi V, Stavropoulos NE: **Thrombospondin-1 expression in urothelial carcinoma: prognostic significance and association with p53 alterations, tumour angiogenesis and extracellular matrix components.** *BMC Cancer* 2006, **6**:140.
 38. Sutton CD, O'Byrne K, Goddard JC, Marshall LJ, Jones L, Garcea G, Dennison AR, Poston G, Lloyd DM, Berry DP: **Expression of thrombospondin-1 in resected colorectal liver metastases predicts poor prognosis.** *Clin Cancer Res* 2005, **11**:6567-6573.
 39. Rice AJ, Steward MA, Quinn CM: **Thrombospondin 1 protein expression relates to good prognostic indices in ductal carcinoma in situ of the breast.** *J Clin Pathol* 2002, **55**:921-925.
 40. Guerrero I, Guarch R, Ojer A, Casas JM, Ropero S, Mancha A, Pesce C, Lloveras B, Garcia-Bragado F, Puras A: **Hypermethylation of the thrombospondin-1 gene is associated with poor prognosis in penile squamous cell carcinoma.** *BJU Int* 2008, **102**:747-755.
 41. Rozen S, Skaletsky H: **Primer3 on the www for general users and for biologist programmers.** *Methods Mol Biol* 2000, **132**:365-386.

doi: 10.1186/1476-4598-9-160

Cite this article as: Hong et al., Tumor suppressor FLCN inhibits tumorigenesis of a FLCN-null renal cancer cell line and regulates expression of key molecules in TGF- β signaling *Molecular Cancer* 2010, **9**:160