

Image analysis as an adjunct to manual HER-2 immunohistochemical review: a diagnostic tool to standardize interpretation

Lynne Dobson, Catherine Conway, Alan Hanley, Alex Johnson, Sean Costello, Anthony O'Grady,¹ Yvonne Connolly,² Hilary Magee,² Daniel O'Shea, Michael Jeffers² & Elaine Kay¹
SlidePath Ltd, ¹Department of Histopathology, Beaumont Hospital and Royal College of Surgeons, and ²Department of Histopathology, Adelaide and Meath incorporating National Children's Hospital, Dublin, Ireland

Date of submission 23 March 2009
Accepted for publication 6 October 2009

Dobson L, Conway C, Hanley A, Johnson A, Costello S, O'Grady A, Connolly Y, Magee H, O'Shea D, Jeffers M & Kay E (2010) *Histopathology* 57, 27–38

Image analysis as an adjunct to manual HER-2 immunohistochemical review: a diagnostic tool to standardize interpretation

Aims: Accurate determination of HER-2 status is critical to identify patients for whom trastuzumab treatment will be of benefit. Although the recommended primary method of evaluation is immunohistochemistry, numerous reports of variability in interpretation have raised uncertainty about the reliability of results. Recent guidelines have suggested that image analysis could be an effective tool for achieving consistent interpretation, and this study aimed to assess whether this technology has potential as a diagnostic support tool.

Methods and results: Across a cohort of 275 cases, image analysis could accurately classify HER-2 status, with 91% agreement between computer-aided classification and the pathology review. Assessment of the continuity of membranous immunoreactivity in

addition to intensity of reactivity was critical to distinguish between negative and equivocal cases and enabled image analysis to report a lower referral rate of cases for confirmatory fluorescence *in situ* hybridization (FISH) testing. An excellent concordance rate of 95% was observed between FISH and the automated review across 136 informative cases.

Conclusions: This study has validated that image analysis can robustly and accurately evaluate HER-2 status in immunohistochemically stained tissue. Based on these findings, image analysis has great potential as a diagnostic support tool for pathologists and biomedical scientists, and may significantly improve the standardization of HER-2 testing by providing a quantitative reference method for interpretation.

Keywords: fluorescence *in situ* hybridization, HER-2, image analysis, immunohistochemistry, virtual slides

Abbreviations: ACIS, automated cellular imaging system; AQUA, automated quantitative analysis; ASCO, American Society of Clinical Oncology; CAP, College of American Pathologists; CI, confidence interval; CISH, chromogenic *in situ* hybridization; EQA, external quality assurance; FDA, Food and Drug Administration; FISH, fluorescence *in situ* hybridization; IA, image analysis; IHC, immunohistochemistry; NDP, NanoZoomer Digital Pathology; NEQAS, National External Quality Assessment Service; QAP, Quality Assurance Program; RCPA, Royal College of Pathologists of Australasia

Address for correspondence: L Dobson, SlidePath, Swift Square, Northwood Business Park, Santry, Dublin 9, Ireland. e-mail: lynne.dobson@slidepath.com

Re-use of this article is permitted in accordance with the terms and conditions set out at <http://www3.interscience.wiley.com/authorresources/onlineopen.html>

Introduction

Targeted therapeutics or personalized medicine regimes are driving a new era of integrated diagnostics and therapeutics, particularly in oncology. Many anticancer antibodies have been approved in association with companion tests for biomarker expression to identify the most responsive patients, ensuring that accurate evaluation of biomarker status has become particularly acute in the clinical laboratory. The role that biomarkers can play is exemplified by HER-2: a prognostic, predictive and therapy selection factor for patients with breast cancer. Amplification of the *HER-2* gene or overexpression of its protein product in cell membranes is seen in 10–30% of invasive breast cancer and is associated with increased disease recurrence and poor prognosis.^{1–5} Clinically, HER-2 is important as the target of the monoclonal antibody trastuzumab (Herceptin[®], Genentech, CA, USA), which significantly improves response rate, disease progression and overall survival when used in an adjuvant setting compared with chemotherapy alone.^{6–8} The association between HER-2 expression and Herceptin[®] response has led to the recommendation that this parameter should be evaluated in every primary invasive breast cancer to distinguish those patients for whom the drug may be of benefit, not only because of the expense of treatment, but also because of its potential to cause myocardial toxicity if incorrectly prescribed.^{9–11}

The therapeutic relevance of HER-2 status demands highly reliable and robust testing to identify tumours that overexpress this protein.¹² The recommended evaluation method for HER-2 is immunohistochemistry (IHC) to detect expression of the HER-2 protein in cell membranes, with equivocal cases confirmed at the gene expression level using fluorescence *in situ* hybridization (FISH).^{9,11} FISH is considered the gold-standard method of evaluation, affording an objective and quantitative scoring system; however, this technique suffers from fading fluorochromes and thus poor long-term stability, in addition to a requirement for specialized microscopic equipment that restricts its use in conventional laboratories.^{8,12} Chromogenic *in situ* hybridization (CISH) or silver-enhanced *in situ* hybridization, which do not rely on fluorescent microscopy, represent alternatives to FISH in terms of *HER-2* oncogene analysis. However, although these methods have been determined to give comparable results to FISH, they are not yet widely utilized in diagnostic pathology.^{11,13}

In contrast, qualitative IHC testing is advocated as the primary assay for identifying candidates for trastuzumab because it is readily available, easily performed

in most clinical pathology laboratories and has many advantages over FISH or CISH in terms of economics, as well as being highly amenable to automation.^{8,10,14,15} Nonetheless, despite efforts to standardize assay protocol and interpretation, antibodies and methods vary across laboratories and IHC scoring remains an inherently subjective process to which only limited statistical confidence can be assigned due to inherent observer variability and the semiquantitative nature of the data.^{8,10,16–19} Even for the trained eye of a pathologist, accurate distinction between the nominal categories (0, 1+, 2+, 3+) is difficult and often arbitrary, and significant variation is introduced as a result of overusing the intermediate category during reviews.^{2,20}

Recently, high rates of discordance between IHC reviewed at high-volume HER-2 reference centres and low-volume regional laboratories has cast doubt on the reliability of results.^{5,21–23} As this stands alone in determining which patients are likely to respond to trastuzumab therapy, additional attention to the performance and interpretation of IHC testing is now warranted.^{24,25} Participation in external quality assurance (EQA) schemes is recommended and, according to the updated National Comprehensive Cancer Network guidelines, if standards cannot be met material should be sent to a reference laboratory. Nonetheless, although the current EQA schemes assess methodologies, they do not attend to disparity in interpretation; in order to address this the American Society of Clinical Oncology has suggested that image analysis could be an effective tool for achieving consistency.⁹ Indeed, virtual pathology, the process of assessing digital images of histology slides, is gaining momentum in today's laboratory environment, with digital image acquisition systems commonplace and associated image analysis solutions viewed by most as the next critical step.²⁶ Image analysis may serve to reduce scoring variability by providing a quantitative HER-2 reference tool, thus standardizing the evaluation system.

Thus there is an urgent need to develop more sensitive image analysis tools that may be utilized with any of the prevalent HER-2 antibody kits in clinical pathology. Towards this goal, we have developed a HER-2 image analysis algorithm that may be applied to slides immunohistochemically stained with Dako HercepTest[®] (Dako, Glostrup, Denmark), Ventana Pathway[®] (Ventana, Tucson, AZ, USA) or Leica Oracle[™] (Leica, Heerbrugg, Switzerland) HER-2 antibodies. In particular our approach employs a novel quantification base, determining the continuity or extent of circumferential membranous immunoreactivity, a parameter

overlooked by other algorithms despite being an important factor for differentiating HER-2 classification. It is hypothesized that by considering this parameter, the number of ambiguous cases may be reduced by enabling better separation between negative and equivocal groups. This multi-site study set out to assess whether this HER-2 algorithm could improve the diagnostic accuracy of IHC scoring, with the performance of the algorithm measured against both manual review and FISH evaluation as the accepted standard.

Materials and methods

SLIDE PREPARATIONS

A total of 448 consecutive cases were selected for this study from the archives of Beaumont Hospital and Adelaide and Meath Hospital, two HER-2 reference laboratories in Dublin, Ireland, of which 425 were successfully stained, reviewed and digitized. All cases were formalin fixed, paraffin embedded and processed in the routine diagnostic laboratory of the institute of origin according to standardized protocols.

Immunohistochemistry

The cases supplied from Beaumont Hospital were assessed for HER-2 protein expression using Dako HercepTest[®] ($n = 144$) and Leica Oracle[™] HER-2 ($n = 140$) antibodies according to the manufacturer's instructions. Those cases supplied from Adelaide and Meath Hospital were analysed for HER-2 protein expression with Ventana Pathway[®] HER-2 (4b5) ($n = 141$) according to the manufacturer's instructions. In all cases, suitable negative and positive control slides were treated in a similar manner to ensure appropriate staining.

Fluorescence in situ hybridization

A representative cohort of cases was selected for FISH testing for verification purposes. Of the 425 cases

supplied, 219 were analysed for HER-2 gene amplification using the PathVysion[®] HER-2 DNA probe kit and paraffin wax pretreatment kit (Vysis Inc., Queenborough, UK) in the facility of origin. All procedures were performed in accordance with the manufacturer's recommended protocol.

Digitization of slides and archival of images

Immunohistochemically stained full-face sections were digitized by SlidePath using a NanoZoomer Digital Pathology (NDP) System (Hamamatsu, Welwyn Garden City, UK). The NDP system utilizes charge-coupled device time delay integration technology to achieve scans with a spatial resolution of 0.46 $\mu\text{m}/\text{pixel}$. Scanning time at 20 \times was approximately 3 min for a 20 \times 20 mm biopsy specimen. Images were approximately 55–487 Mb per whole section biopsy specimen and were archived using SlidePath's Digital Slideserver, a secure, web-enabled digital slide management system.

MANUAL EVALUATION OF HER-2 STATUS

At each site, HER-2 protein expression was reviewed by a Consultant Pathologist. For those cases where FISH analysis was carried out, gene amplification status was reviewed by a Biomedical Scientist. All cases were classified according to the new American Society of Clinical Oncology/College of American Pathologists (ASCO/CAP) and UK guideline recommendations for HER-2 testing as detailed in Table 1.

IMAGE ANALYSIS CLASSIFICATION OF HER-2 STATUS

Tissue IA system

The HER-2 image analysis algorithm was deployed within SlidePath's Tissue IA system, a web-enabled image analysis solution for the interpretation of virtual slides. As a prerequisite for image analysis, invasive tumour regions of all cases were annotated on-line by

Table 1. American Society of Clinical Oncology/College of American Pathologists and UK guideline recommendations for HER-2 classification^{9,11}

Classification	HER-2 grade	IHC staining pattern	FISH criteria
Negative	0/1+	No staining or weak, incomplete membranous staining in <10% of tumour cells	HER2/Chr17 ratio <1.8
Equivocal	2+	Weak to moderate complete membranous staining that is non-uniform or weak in intensity in at least 10% of cells	HER2/Chr17 ratio between 1.8 and 2.2
Positive	3+	Uniform, intense membranous staining in >30% of tumour cells	HER2/Chr17 ratio >2.2

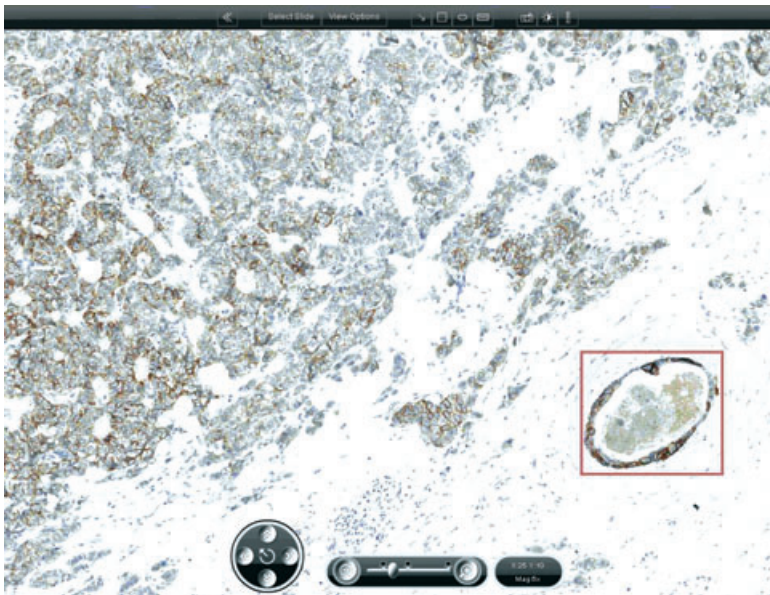


Figure 1. As a prerequisite for image analysis and in accordance with clinical guidelines, the non-invasive regions of tumour were annotated online by a Pathologist and excluded from analysis.

the respective Consultant Pathologist, with non-invasive or ductal carcinoma *in situ* regions excluded from analysis (Figure 1).

Entire full-face sections or annotated regions of these cases were subsequently submitted for batch image analysis. Tissue IA employs a grid computing model that distributes image data across multiple processing nodes, facilitating high-throughput automated analysis of virtual slides. The HER-2 algorithm utilizes a specific colour definition file to define immunopositive tissue within an image and isolates the cell membrane using edge detection techniques. The output from the algorithm includes a number of quantitative measurements such as membrane staining absorbance, percent membrane positive pixels in tissue and percent membrane continuity.

Generation of probability classifier

From the total cohort of 425 cases, a training set of 150 cases containing an equal distribution of slides stained with Ventana Pathway[®], Leica Oracle[™] and Dako HercepTest[®] antibodies was randomly chosen by assigning cases with a random real number ≥ 0 and < 1 and selecting the 50 highest numbers for each antibody cohort. Table 2 illustrates the distribution of cases according to the manual review in the training and validation sets.

The image analysis results for these slides were exported for statistical analysis and were used to generate a probability classifier, which determined a dedicated HER-2 score (0/1+, 2+ or 3+) based on the

Table 2. Distribution of cases in training and validation sets

	Training set		Validation set	
	Number of cases	% of total	Number of cases	% of total
0/1+	89	59.4	183	66.5
2+	32	21.3	40	14.5
3+	29	19.3	52	19.0
Total	150	100	275	100

distribution of staining absorbance and membrane continuity for each category. In addition, a constraint was included that automatically defined any case with $< 1\%$ immunopositive pixels in selected regions as negative or 0/1+. These computational steps were then incorporated into the algorithm, resulting in an output of a dedicated HER-2 classification, along with a percentage confidence in that score.

Validation of cell-line standards

For 180 of the 275 remaining test cases the manufacturer control cell line material was also available for analysis. Cell lines provide consistency in terms of both the quantity of material and the gradation of protein expression, and when used as part of a validated system have applications in internal quality assurance, providing a standard against which a laboratory can gauge against day-to-day drift in assay sensitivity.

STATISTICAL ANALYSIS

Sigma Plot Version 8 (SPSS Inc., Chicago, IL, USA) and SPSS Version 15 (SPSS Inc.) were used to perform statistical analyses including concordance and Cohen's κ statistics. The Landis and Koch Kappa interpretation scale was used to evaluate the level of κ agreement.²⁷

The sensitivity and specificity of both the automated and manual review were calculated using FISH evaluation as the gold standard, where:

$$\text{Sensitivity} = \frac{\text{True positives}}{\text{True positives} + \text{False negatives}} \quad (1)$$

$$\text{Specificity} = \frac{\text{True negatives}}{\text{True negatives} + \text{False positives}} \quad (2)$$

Results

CONCORDANCE WITH MANUAL REVIEW

The concordance between image analysis evaluation of HER-2 status and manual review by a Consultant Pathologist was blindly assessed on a cohort of 275 cases stained with Dako HercepTest[®], Leica Oracle[™] and Ventana Pathway[®]. Statistical analysis established that there was agreement in the classification of 250 of the 275 cases, representing a concordance of 91% between the pathology and image analysis reviews (Table 3). Kappa was evaluated to be 0.81, which indicates 'almost perfect' agreement between manual review by a pathologist in a reference laboratory and automated review using image analysis. Table 3 also reveals that in this study image analysis reported a lower number of equivocal cases than the manual

Table 3. Performance of image analysis with clinical samples assessed on the basis of the American Society of Clinical Oncology/College of American Pathologists and UK scoring guidelines

		Image analysis classification			Total
		0/1+	2+	3+	
Manual classification	0/1+	178	5	0	183
	2+	15	23	2	40
	3+	0	3	49	52
Total		193	31	51	275

Concordance, 90.9%.

κ , 0.811.

pathology review. Indeed, of the 17 cases reclassified by image analysis, 15 had been FISH tested and in each of these cases the gene amplification status was concordant with the reclassified score by image analysis, suggesting that image analysis would have led to a significant cost saving in this instance. Figure 2 shows representative images from the system and illustrates the ability of the HER-2 algorithm to detect regions of positively and continuously immunoreactive cell membrane.

As expected, analysis of the corresponding cell-line control material determined that those slides stained using automated systems exhibited less variance than those prepared manually. Nonetheless, normalization to compensate for variance had no impact on the classification of HER-2 by image analysis.

CONCORDANCE WITH FISH EVALUATION

A number of cases in the study ($n = 136$) were also analysed by FISH, the 'gold-standard' method of HER-2 evaluation. The concordance rate between HER-2 gene amplification and IHC review was determined to be excellent for both image analysis and the pathology review, demonstrating that image analysis can robustly and accurately classify HER-2 status (Table 4). However, it was observed that image analysis review of the IHC sections attained a slightly higher concordance rate with FISH than the manual review (95% versus 92%, respectively). Although both methods correctly classified 13 FISH+ cases as 3+ IHC cases, quantification by image analysis identified 92 cases with no gene amplification, in comparison with 83 for the pathology review. This was attributed to improved differentiation between negative and equivocal cases by image analysis and suggests that the automated method of review is more accurate than visual scoring.

Nonetheless, it is evident from Table 4 that significant disagreement between IHC classification and FISH amplification occurred in six cases, which were subsequently re-examined for possible causes of conflicting results. Figure 3 illustrates that IHC staining was negligible in all of these cases and the pathology and image analysis reviews agreed that these should be categorized as negative or 0/1+. However, in each case gene amplification was determined to be positive by FISH, suggesting these are false-negative IHC cases. A number of previous studies have reported this phenomenon in approximately 7% of HER-2 FISH+ results, which would correlate with the figures determined here, and the cause is generally attributed to destruction of the HER-2 epitope or antigen loss during fixation or processing.^{3,28} It was noted that if these

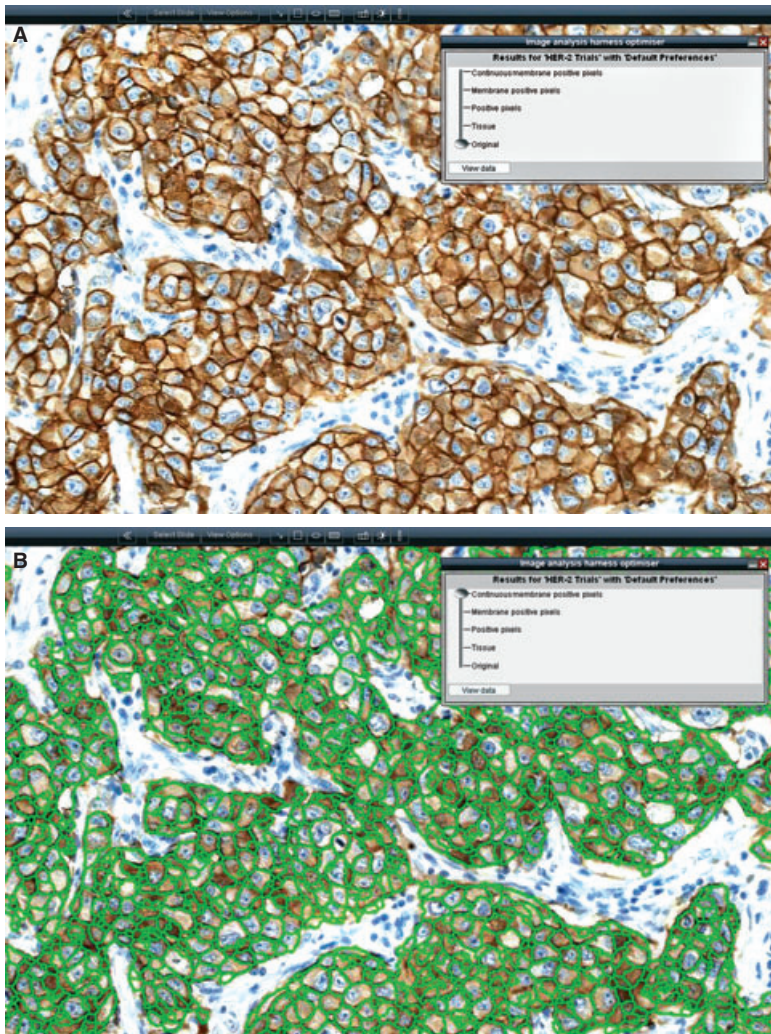


Figure 2. A, Unprocessed image of breast tissue that has been immunohistochemically stained with antibodies probing for HER-2 protein expression. B, Areas detected as positive for continuous membranous immunoreactivity by image analysis are highlighted in green.

Table 4. Concordance between *HER-2* gene amplification and HER-2 protein expression reviewed by a pathologist and by image analysis

	IHC			Image analysis classification		
	Manual classification					
FISH	Negative (0/1+)	Positive (3+)	Equivocal (2+)	Negative (0/1+)	Positive (3+)	Equivocal (2+)
Positive	7	13	7	6	13	8
Negative	83	1	25	92	0	17
Concordance	92%	93%	NA	94%	100%	NA

slides were omitted from Table 4 the sensitivity of both review methods would be significantly improved, with HER-2 classification by image analysis review achieving 100% sensitivity and specificity.

Receiver–operating characteristic curve analysis was used to compare the accuracy of the manual and image

analysis methods with FISH evaluation as the standard (Figure 4). The area under the curve value was found to be 0.93 [95% confidence interval (CI) 0.867, 0.965] for the manual review with 0.97 (95% CI 0.925, 0.992) obtained by image analysis, confirming the accuracy of the automated algorithm. Both review

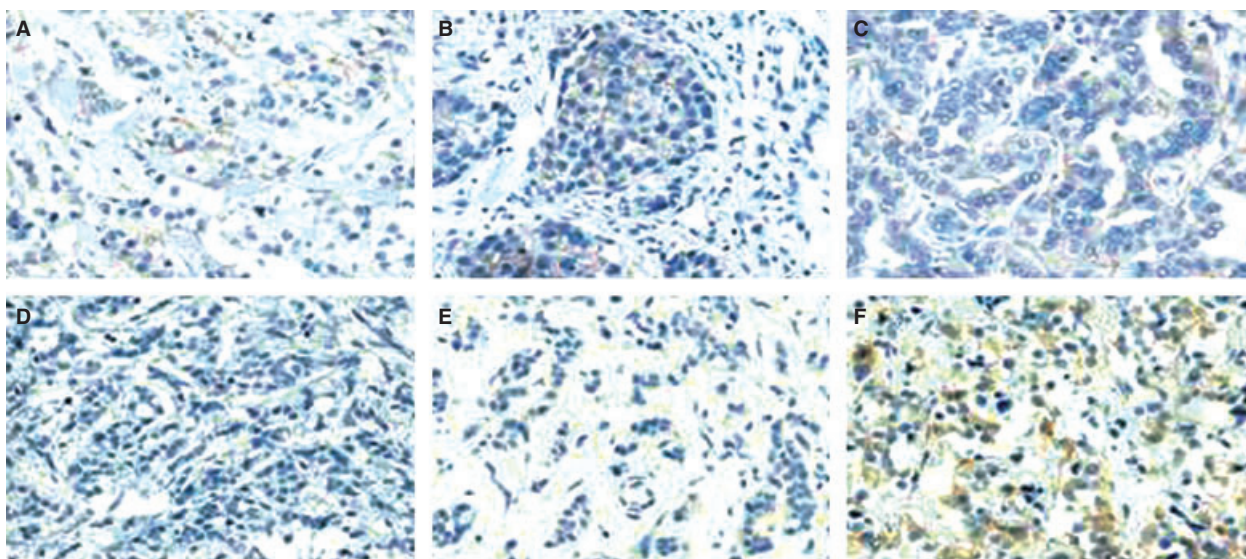


Figure 3. Cases where IA and Manual review agreed on a classification of 0/1+ but gene amplification was determined to be positive by fluorescence *in situ* hybridization. Cases were stained using HER-2 antibodies from: A, Ventana Pathway[®]; B, Ventana Pathway[®]; C, Ventana Pathway[®]; D, Dako HercepTest[®]; E, Leica Oracle[™]; F, Leica Oracle[™].

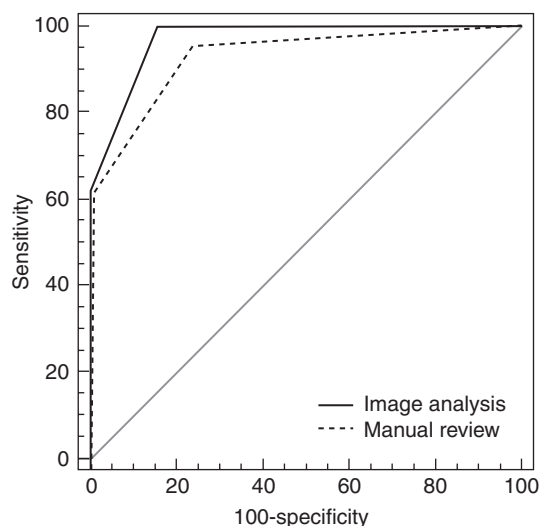


Figure 4. Receiver-operator curve for the manual and image analysis review of 136 informative cases (a curve reaching the upper left corner implies better performance).

methods were found to be statistically significant ($P < 0.0001$).

COMPARISON WITH OTHER COMMERCIALY AVAILABLE IMAGE ANALYSIS SYSTEMS

A number of other image analysis systems are commercially available for use as decision support tools in the clinical setting. Nevertheless, Table 5 illustrates that the accuracy in predicting HER-2

status varies considerably across the offerings and a number of key distinguishing factors exist between the systems. In comparison with the data submitted by other systems for Food and Drug Administration (FDA) approval, this validation study across a larger cohort of clinical cases has established that Tissue IA achieved a 5–14% higher correlation with manual review. Indeed, the 91% concordance rate reported here is substantially greater than the 70% agreement detailed by Camp *et al.*,² 2003, using the automated quantitative analysis (AQUA) system. In addition, the performance of the HER-2 algorithm under trial has attained high levels of concordance with gene amplification status, greater than that reported for the automated cellular imaging system (ACIS) by Tawfik *et al.* and Wang *et al.*^{29,30} Furthermore, this system has been validated to perform with slides stained using Dako HercepTest[®], Leica Oracle[™] and Ventana Pathway[®] HER-2 antibodies.

The disparity in the accuracy of the image analysis systems may be attributed to a variety of factors. In the first instance, the HER-2 algorithm reviewed here has the capacity to identify and eliminate artefactual staining which may be observed when automated staining systems are employed or improper use of such equipment occurs (Figure 5). Without this functionality, true-negative cases may be incorrectly classified by image analysis as equivocal due to the high intensity of immunoreactivity.

Moreover, it is evident from Table 5 that the distinguishing factor between the image analysis

Table 5. Comparison of SlidePath's Tissue IA system with other commercially available systems for HER-2 analysis

Manufacturer	SlidePath	Aperio	Biolmagene	Dako (Chromavision)	Genetix (Applied Imaging)	Ventana (TriPath Imaging)
System	Tissue IA	Scanscope XT	Pathiam	ACIS	Ariol	VIAS
Assay	Dako HercepTest® Leica Oracle Bond™ Ventana Pathway® (4b5)	Dako HercepTest®	Dako HercepTest®	Dako HercepTest®	Dako HercepTest®	Ventana Pathway® (4b5) Ventana Pathway® (cb11)
Concordance with manual review (sample size)	91% (n = 275)	86%* (n = 180)	81%* (n = 176)	75%* (n = 90)	a* (n = 124)	86%* (n = 206) 77%* (n = 201)
Image format support	●	○	○	○	○	○
Dependence on manual selection	●	●	●	●	●	●
Quantitation base	Intensity, continuity	Intensity	Morphology, intensity	Intensity	Intensity	Intensity

High ●, Intermediate ○, Low ○.

*Data from Food and Drug Administration 510 k substantial equivalence reports (<http://www.fda.gov>).

a: The likelihood of the image analysis system producing a consistent score on a given slide is as likely as the pathologists are to agree with each other.

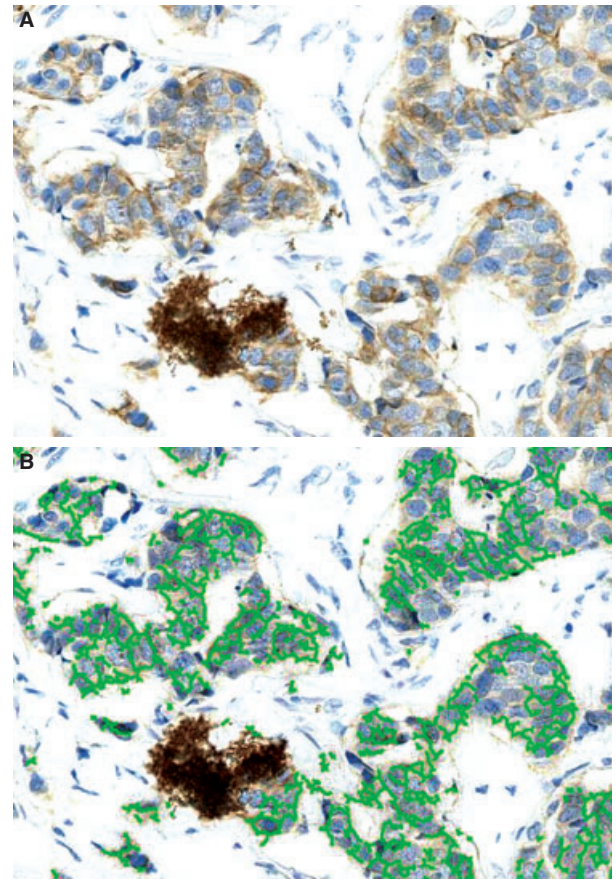


Figure 5. A, Artefactual chromogenic staining and B, the ability of the HER-2 algorithm to identify and exclude these areas from analysis.

systems is the quantification base used to determine the extent of HER-2 protein expression. While all algorithms quantify the intensity of membranous immunoreactivity, the algorithm under trial also determines the continuity of membranous reactivity, the parameter that underpins the definition of positive HER-2 status. Although intensity of reactivity is critical for distinguishing the 3+ cases, consideration of membrane continuity is essential for clear distinction of the 0/1+ and the equivocal 2+ categories. Indeed, Figure 6 demonstrates that although the intensity of membranous immunoreactivity can appear to be similar for both groups, the extent of continuity of that reactivity is undoubtedly a distinguishing factor that enables correct differentiation of a number of ambiguous visual IHC scores.

Discussion

High levels of HER-2 protein expression or *HER-2* gene amplification are used to identify patients for whom

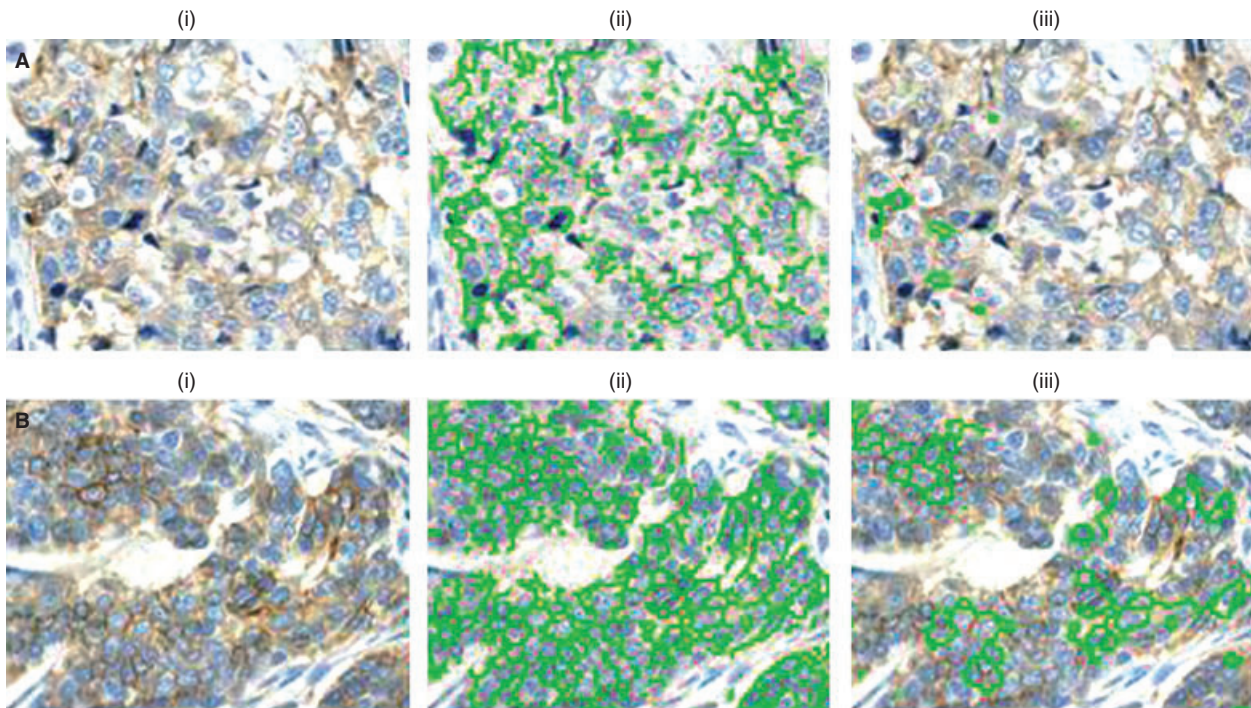


Figure 6. Importance of evaluating circumferential membranous immunoreactivity, which enables differentiation of 1+ and equivocal (2+) cases by image analysis. A, 1+ in-house control tissue [fluorescence *in situ* hybridization (FISH) score 1.18]. B, 2+ in-house control tissue (FISH score 1.97); (i), original image; (ii), regions of issue identified as immunopositive membrane; (iii), regions of positively and continuously immunoreactive membrane.

trastuzumab may be of benefit for treatment of breast cancer in the metastatic or adjuvant disease settings.²⁸ In accordance with the HER-2 testing guidelines, in most laboratories IHC is carried out first with additional testing accomplished by FISH. However, assignment of HER-2 grade by assessment of IHC is inherently subjective and dependent on the skill and experience of the reviewing pathologist.³¹ Thus the standardization of diagnosing breast cancer is a very important task for improving personalized cancer patient care, as a cancer patient to whom an inappropriate drug is given will face disease progression during the treatment time impacting on overall survival rate and increased costs.³²

The last 10 years have seen enormous advances in the capabilities of image analysis systems applied to tissue sections with complex computer algorithms used to interpret the images.²⁶ Digital microscopy is increasingly being used to document and analyse tissue specimens in modern research laboratories and it has recently been proposed that newly introduced image analysis technology has a major role to play in the progress of diagnostic pathology.^{12,33} In comparison with human-based assessment, automated image analysis offers numerous advantages such as precise,

reproducible, continuous and objective assessment of protein expression.^{17,34} Indeed, image analysis has been used to evaluate the expression of nuclear markers such as oestrogen and progesterone receptor; cytoplasmic markers such as β -catenin; and other membrane proteins such as E-cadherin.^{35,36–38} Nonetheless, a major requisite for the acceptance of image analysis in the clinical laboratory is that it must yield high concordance with the current gold standard method. Indeed, although the ASCO/CAP guidelines have advocated the use of image analysis for HER-2, a degree of resistance to its adoption in the clinical setting has been observed, perhaps due to the low accuracy and restrictions of the currently available and approved systems.

The approach detailed in this study has aimed to address the inherent deficiencies in other systems. In the first instance, the algorithm under review measures the continuity of membranous immunoreactivity as well as the intensity of reactivity, and has demonstrated that consideration of both parameters enables accurate distinction of HER-2 status. Furthermore, this HER-2 algorithm has been validated to perform with some of the most prevalent HER-2 antibodies on the market. Although the HER-2 guidelines for testing do

not stipulate the use of a particular antibody, the Dako HercepTest® and Ventana Pathway® are recommended as FDA-approved kits, and the Leica Oracle™ HER-2 antibody is also frequently employed in laboratories that have demonstrated concordance with a validated method.

Our findings demonstrate that image analysis can accurately and robustly classify HER-2 status. A concordance rate of 91% was observed in comparison with manual review by a pathologist, and the significant value of image analysis was exemplified by a 4% reduction in the reporting of equivocal cases. This represents a decrease in the number of cases requiring confirmatory FISH testing and thus a potential cost saving for clinical laboratories. Moreover, the concordance of image analysis with gene amplification status as the standard was observed to be 95%, which represents better correlation and accuracy with FISH than the manual interpretation of IHC. The data from this study are substantially greater than reported by existing systems in FDA approval documentation and independently by Camp *et al.* using the AQUA platform, or Wang *et al.* and Tawfik *et al.* using the ACIS system.^{2,29,30} Indeed, in comparison with FISH, the ACIS system was demonstrated to falsely predict 4–11% of cases as HER-2 amplified, which could have a significant impact on patient welfare.^{29,30} In contrast, the platform reviewed here accurately predicted all HER-2 gene-amplified cases with a false-positive rate of 0%.

Although it is generally accepted that the standard assessment of IHC will remain the manual pathology review, our findings suggest that integration of image analysis into the diagnostic workflow could significantly enhance the reproducibility of scoring, particularly in those laboratories where there is lack of experience in interpreting HER-2 staining. However, aside from providing assistance for interpretation, image analysis could be utilized as an internal resource to qualify the quality of IHC, introducing an unprecedented level of internal laboratory quality assurance. Both the ASCO/CAP and UK guidelines recommend the use of control material, which should be used consistently by each laboratory with each run of tests.^{9,11} Although tissue controls are often employed, this material is frequently difficult to acquire and can exhibit variation in tumour expression and fixation that is far from ideal.³⁹ In contrast, cell lines with differing but constant levels of HER-2 expression have been advocated as standard material against which assay sensitivity can be gauged.³⁹ Image analysis of cell line standards could be utilized to assess batch variability of staining within clinical laboratories, providing

a means to validate the ability of a laboratory to produce consistently immunostained slides, flagging batches should intensity of reactivity fall outside of acceptable limits. This may be of interest to many external quality assurance providers such as CAP, UK National External Quality Assessment Service (NEQAS), Nordic Immunohistochemical Quality Control and Royal College of Pathologists of Australasia (RCPA) Quality Assurance Program (QAP), as it will enable laboratories to grade their performance against other facilities using the same standards and antibodies, similar to the annual performance rankings generated by the RCPA Anatomical Pathology QAP. Indeed, whilst organizations such as UK NEQAS have a role to play in ensuring a high standard of quality assessment, at present UK NEQAS schemes focus primarily on methodologies rather than the interpretation of results.⁴⁰ Nonetheless, Walker *et al.*¹¹ documented that 'virtual systems are being explored' and it is likely that image analysis will play a significant role in the provision of quality assurance schemes in the future.

Undoubtedly, the recent reports of poor observer variability regarding the evaluation of HER-2 in the clinical setting justify the development of software tools to help standardize interpretation, particularly in equivocal cases. Based on this study, Tissue IA has been validated as a consistent scoring tool with excellent levels of concordance with manual scoring and FISH, advocating the use of Tissue IA as a decision support system for pathologists to assist in the diagnosis of disease. Further independent studies to demonstrate the accuracy of the system have been initiated.

Intended use

SlidePath applications are not cleared by the FDA, Health Canada, or in the EU for diagnostic or clinical use. All applications are intended solely for use in the research or educational setting, such as university or pharmaceutical development. These applications are described as Research Applications or Research Use Only.

References

1. Slamon DJ, Clark GM, Wong SG, Levin WJ, Ullrich A, McGuire WL. Human breast cancer: correlation of relapse and survival with amplification of the HER-2/neu oncogene. *Science* 1987; 235: 177–182.
2. Camp RL, Dolled-Filhart M, King BL, Rimm DL. Quantitative analysis of breast cancer tissue microarrays shows that both high and normal levels of HER2 expression are associated with poor outcome. *Cancer Res.* 2003; 63: 1445–1448.

3. Ellis CM, Dyson MJ, Stephenson TJ, Maltby EL. HER2 amplification status in breast cancer: a comparison between immunohistochemical staining and fluorescence *in situ* hybridisation using manual and automated quantitative image analysis scoring techniques. *J. Clin. Pathol.* 2005; **58**: 710–714.
4. Slamon DJ, Godolphin W, Jones LA *et al.* Studies of the HER-2/neu proto-oncogene in human breast and ovarian cancer. *Science* 1989; **244**: 707–712.
5. Lacroix-Triki M, Mathoulin-Pelissier S, Ghnassia JP *et al.* High inter-observer agreement in immunohistochemical evaluation of HER-2/neu expression in breast cancer: a multicentre GEPFICS study. *Eur. J. Cancer* 2006; **42**: 2946–2953.
6. Slamon DJ, Leyland-Jones B, Shak S *et al.* Use of chemotherapy plus a monoclonal antibody against HER2 for metastatic breast cancer that overexpresses HER2. *N. Engl. J. Med.* 2001; **344**: 783–792.
7. Slamon D. *Phase III randomized trial comparing doxorubicin and cyclophosphamide followed by docetaxel with doxorubicin and cyclophosphamide followed by docetaxel and trastuzumab with docetaxel, carboplatin, and trastuzumab (TCH) in HER2 positive early breast cancer patients.* Paris: Breast Cancer International Research Group 006 study, 2005.
8. Elkin EB, Weinstein MC, Winer EP, Kuntz KM, Schnitt SJ, Weeks JC. HER-2 testing and trastuzumab therapy for metastatic breast cancer: a cost-effectiveness analysis. *J. Clin. Oncol.* 2004; **22**: 854–863.
9. Wolff AC, Hammond ME, Schwartz JN *et al.* American Society of Clinical Oncology/College of American Pathologists guideline recommendations for human epidermal growth factor receptor 2 testing in breast cancer. *J. Clin. Oncol.* 2007; **25**: 118–145.
10. Egervari K, Szollosi Z, Nemes Z. Tissue microarray technology in breast cancer HER2 diagnostics. *Pathol. Res. Pract.* 2007; **203**: 169–177.
11. Walker RA, Bartlett JM, Dowsett M *et al.* HER2 testing in the UK: further update to recommendations. *J. Clin. Pathol.* 2008; **61**: 818–824.
12. Dietel M, Ellis IO, Hofler H *et al.* Comparison of automated silver enhanced *in situ* hybridisation (SISH) and fluorescence ISH (FISH) for the validation of HER2 gene status in breast carcinoma according to the guidelines of the American Society of Clinical Oncology and the College of American Pathologists. *Virchows Arch.* 2007; **451**: 19–25.
13. Di Palma S, Collins N, Bilous M *et al.* A quality assurance exercise to evaluate the accuracy and reproducibility of chromogenic *in situ* hybridisation for HER2 analysis in breast cancer. *J. Clin. Pathol.* 2008; **61**: 757–760.
14. Rhodes A, Jasani B, Anderson E, Dodson AR, Balaton AJ. Evaluation of HER-2/neu immunohistochemical assay sensitivity and scoring on formalin-fixed and paraffin-processed cell lines and breast tumors: a comparative study involving results from laboratories in 21 countries. *Am. J. Clin. Pathol.* 2002; **118**: 408–417.
15. Thomson TA, Hayes MM, Spinelli JJ *et al.* HER-2/neu in breast cancer: interobserver variability and performance of immunohistochemistry with 4 antibodies compared with fluorescent *in situ* hybridization. *Mod. Pathol.* 2001; **14**: 1079–1086.
16. Ciampa A, Xu B, Ayata G *et al.* HER-2 status in breast cancer: correlation of gene amplification by FISH with immunohistochemistry expression using advanced cellular imaging system. *Appl. Immunohistochem. Mol. Morphol.* 2006; **14**: 132–137.
17. Cregger M, Berger AJ, Rimm DL. Immunohistochemistry and quantitative analysis of protein expression. *Arch. Pathol. Lab. Med.* 2006; **130**: 1026–1030.
18. Scheldermann D, Hyldebrandt T, Ejersbo D, Hoelund B. Automated screening versus manual screening: a comparison of the ThinPrep Imaging System and manual screening in a time study. *Diagn. Cytopathol.* 2007; **35**: 348–352.
19. Conway C, Dobson L, O'Grady A, Kay E, Costello S, O'Shea D. Virtual microscopy as an enabler of automated/quantitative assessment of protein expression in TMAs. *Histochem. Cell Biol.* 2008; **130**: 447–463.
20. Kay EW, Walsh CJ, Cassidy M, Curran B, Leader M. C-erbB-2 immunostaining: problems with interpretation. *J. Clin. Pathol.* 1994; **47**: 816–822.
21. Paik S, Bryant J, Tan-Chiu E *et al.* Real-world performance of HER2 testing – National Surgical Adjuvant Breast and Bowel Project experience. *J. Natl. Cancer Inst.* 2002; **94**: 852–854.
22. Roche PC, Suman VJ, Jenkins RB *et al.* Concordance between local and central laboratory HER2 testing in the breast intergroup trial N9831. *J. Natl. Cancer Inst.* 2002; **94**: 855–857.
23. Press MF, Sauter G, Bernstein L *et al.* Diagnostic evaluation of HER-2 as a molecular target: an assessment of accuracy and reproducibility of laboratory testing in large, prospective, randomized clinical trials. *Clin. Cancer Res.* 2005; **11**: 6598–6607.
24. Hicks DG, Kulkarni S. HER2+ breast cancer: review of biologic relevance and optimal use of diagnostic tools. *Am. J. Clin. Pathol.* 2008; **129**: 263–273.
25. Hsi ED, Tubbs RR. Guidelines for HER2 testing in the UK. *J. Clin. Pathol.* 2004; **57**: 241–242.
26. Mulrane L, Rexhepaj E, Penney S, Callanan JJ, Gallagher WM. Automated image analysis in histopathology: a valuable tool in medical diagnostics. *Expert Rev. Mol. Diagn.* 2008; **8**: 707–725.
27. Landis JR, Koch GG. The measurement of observer agreement for categorical data. *Biometrics* 1977; **33**: 159–174.
28. Harris L, Fritsche H, Mennel R *et al.* American Society of Clinical Oncology 2007 update of recommendations for the use of tumor markers in breast cancer. *J. Clin. Oncol.* 2007; **25**: 5287–5312.
29. Tawfik OW, Kimler BF, Davis M *et al.* Comparison of immunohistochemistry by automated cellular imaging system (ACIS) versus fluorescence *in-situ* hybridization in the evaluation of HER-2/neu expression in primary breast carcinoma. *Histopathology* 2006; **48**: 258–267.
30. Wang S, Saboorian MH, Frenkel EP *et al.* Assessment of HER-2/neu status in breast cancer. Automated Cellular Imaging System (ACIS)-assisted quantitation of immunohistochemical assay achieves high accuracy in comparison with fluorescence *in situ* hybridization assay as the standard. *Am. J. Clin. Pathol.* 2001; **116**: 495–503.
31. Ludwig JA, Weinstein JN. Biomarkers in cancer staging, prognosis and treatment selection. *Nat. Rev. Cancer* 2005; **5**: 845–856.
32. Marrer E, Dieterle F. Biomarkers in oncology drug development: rescuers or troublemakers? *Expert Opin. Drug Metab. Toxicol.* 2008; **4**: 1391–1402.
33. Mulrane L, Rexhepaj E, Smart V *et al.* Creation of a digital slide and tissue microarray resource from a multi-institutional predictive toxicology study in the rat: an initial report from the PredTox group. *Exp. Toxicol. Pathol.* 2008; **60**: 235–245.
34. Divito KA, Berger AJ, Camp RL, Dolled-Filhart M, Rimm DL, Kluger HM. Automated quantitative analysis of tissue microarrays reveals an association between high Bcl-2 expression and improved outcome in melanoma. *Cancer Res.* 2004; **64**: 8773–8777.

35. Gokhale S, Rosen D, Sneige N *et al.* Assessment of two automated imaging systems in evaluating estrogen receptor status in breast carcinoma. *Appl. Immunohistochem. Mol. Morphol.* 2007; **15**; 451–455.
36. Rexhepaj E, Brennan DJ, Holloway P *et al.* Novel image analysis approach for quantifying expression of nuclear proteins assessed by immunohistochemistry: application to measurement of oestrogen and progesterone receptor levels in breast cancer. *Breast Cancer Res.* 2008; **10**; R89.
37. Dolled-Filhart M, McCabe A, Giltnane J, Cregger M, Camp RL, Rimm DL. Quantitative *in situ* analysis of beta-catenin expression in breast cancer shows decreased expression is associated with poor outcome. *Cancer Res.* 2006; **66**; 5487–5494.
38. Harigopal M, Berger AJ, Camp RL, Rimm DL, Kluger HM. Automated quantitative analysis of E-cadherin expression in lymph node metastases is predictive of survival in invasive ductal breast cancer. *Clin. Cancer Res.* 2005; **11**; 4083–4089.
39. Rhodes A, Borthwick D, Sykes R, Al-Sam S, Paradiso A. The use of cell line standards to reduce HER-2/neu assay variation in multiple European cancer centers and the potential of automated image analysis to provide for more accurate cut points for predicting clinical response to trastuzumab. *Am. J. Clin. Pathol.* 2004; **122**; 51–60.
40. Dowsett M, Hanna WM, Kockx M *et al.* Standardization of HER2 testing: results of an international proficiency-testing ring study. *Mod. Pathol.* 2007; **20**; 584–591.