

RESEARCH ARTICLE

Open Access

Processing of emotional words measured simultaneously with steady-state visually evoked potentials and near-infrared diffusing-wave spectroscopy

Leonie Koban^{1,3}, Markus Ninck², Jun Li², Thomas Gisler², Johanna Kissler^{1*}

Abstract

Background: Emotional stimuli are preferentially processed compared to neutral ones. Measuring the magnetic resonance blood-oxygen level dependent (BOLD) response or EEG event-related potentials, this has also been demonstrated for emotional versus neutral words. However, it is currently unclear whether emotion effects in word processing can also be detected with other measures such as EEG steady-state visual evoked potentials (SSVEPs) or optical brain imaging techniques. In the present study, we simultaneously performed SSVEP measurements and near-infrared diffusing-wave spectroscopy (DWS), a new optical technique for the non-invasive measurement of brain function, to measure brain responses to neutral, pleasant, and unpleasant nouns flickering at a frequency of 7.5 Hz.

Results: The power of the SSVEP signal was significantly modulated by the words' emotional content at occipital electrodes, showing reduced SSVEP power during stimulation with pleasant compared to neutral nouns. By contrast, the DWS signal measured over the visual cortex showed significant differences between stimulation with flickering words and baseline periods, but no modulation in response to the words' emotional significance.

Conclusions: This study is the first investigation of brain responses to emotional words using simultaneous measurements of SSVEPs and DWS. Emotional modulation of word processing was detected with EEG SSVEPs, but not by DWS. SSVEP power for emotional, specifically pleasant, compared to neutral words was reduced, which contrasts with previous results obtained when presenting emotional pictures. This appears to reflect processing differences between symbolic and pictorial emotional stimuli. While pictures prompt sustained perceptual processing, decoding the significance of emotional words requires more internal associative processing. Reasons for an absence of emotion effects in the DWS signal are discussed.

Background

Emotionally significant stimuli automatically attract attention and have been shown to be processed preferentially in comparison to neutral stimuli. This effect is apparent for both unpleasant stimuli, such as angry faces, snakes or humiliation scenes, and in pleasant material like erotica or baby faces, as investigated in behavioral experiments, in studies using EEG, and in fMRI [1-3]. Functional MRI experiments indicate increased BOLD responses during presentation of

intrinsically unpleasant stimuli as well as aversively conditioned stimuli in different brain areas, including - perhaps surprisingly - even primary visual areas [4-6]. Using near-infrared spectroscopy (NIRS), two recent studies [7,8] reported increased metabolic activity in the occipital lobes for emotional, and in particular pleasant, compared to neutral pictures.

EEG event-related potential (ERPs) recordings found an enhanced early posterior negativity (EPN) between 200 ms and 300 ms after stimulus onset and an increased late positive potentials (LPPs) around 500 ms for emotional compared to neutral pictures from the International Affective Picture Set (IAPS, [9]) [10-12]. Further, eliciting steady-state visual evoked potentials

* Correspondence: johanna.kissler@uni-konstanz.de

¹Department of Psychology, University of Konstanz, Universitätsstrasse 10, 78457 Konstanz, Germany

with oscillatory flickering IAPS pictures also leads to enlarged signal amplitudes for emotional pictures, pointing at higher activity in primary visual areas (e.g., [13,14]).

Enhanced sensory processing of emotional stimuli is presumed to be mediated by feedback projections from the basal nucleus of the amygdala to the striate cortex and extrastriate, secondary visual and associative processing areas [15]. The amygdala is an almond-shaped structure in the anterior medial temporal lobe strongly involved in emotion processing [16]. Through this so-called "reentrant processing" the amygdala may therefore enhance neural responses to emotionally relevant stimuli [15].

Even purely symbolic stimuli such as words seem to be subject to the effects of enhanced visual processing and attention allocation, as shown in studies investigating event-related EEG potentials (ERPs) to emotionally significant words (see [17] for a review). Even in very early time windows emotionally significant words affect visual processing, as indicated by enlarged P2 s at parietal electrodes (around 180-250 ms after stimulus onset) for pleasant [18] or both pleasant and unpleasant words [19]. Similarly, an enhanced early posterior negativity (EPN) has been found at around 250 ms for emotional in comparison to neutral words [20-23].

Regarding late (> 300 ms) ERP effects, several studies found enhanced LPPs for both pleasant and unpleasant compared to neutral words (e.g., [23-25]). However, in some studies only pleasant words induced an enhanced LPP [19,20,26], although early effects were found for both pleasant and unpleasant words. Due to specific elaborative associative processing, later effects may have been restricted to pleasant stimuli [19,20]. Evidence for deeper associative processing particularly of words with pleasant emotional content also comes from two studies probing the startle eye blink response [19,27].

Event-related functional magnetic resonance imaging also revealed increased BOLD responses to emotionally relevant words in limbic areas and visual cortex [28,29]. A recent study of single word reading found the largest effects during reading of pleasant words, as reflected in activation increase in both occipital visual areas and the amygdala. The increase in activation of these areas were correlated, in line with the model of re-entrant processing [30].

While it is becoming clear that emotionally significant words benefit from transient amplification of visual processing, it is an open question whether this enhanced activation is also seen in prolonged and sustained electrophysiological responses of the visual cortex, such as steady-state visual evoked potentials (SSVEPs), for which emotion effects have previously been found using IAPS picture stimuli [13,14]. The present study addresses this

issue combining electrophysiological and non-invasive optical measures of brain activity in response to the presentation of flickering word stimuli.

Diffusing-wave spectroscopy (DWS; also called diffuse correlation spectroscopy, DCS) is an emerging optical technique for the non-invasive detection of functional brain activity. The contrast mechanism of DWS is based on the dynamics of scatterers within tissue - such as erythrocytes - that is enhanced e.g. by the increase of regional blood flow associated with the vasodilatation induced by electrical activity [31-35]. The first entirely non-invasive applications of DWS to brain function detection [32,34] focused on the human motor cortex stimulated by finger tapping tasks, which elicit large functional signals. However, such tasks interfere with systemic perfusion changes accompanying functional cortical activation.

Recent technical advances, which have significantly improved the signal-to-noise ratio of the DWS experiment [36], have allowed for detection of functional DWS signals from much smaller, activated areas located more deeply in the cortex, such as the human primary visual cortex where functional activation can be elicited without changes of systemic perfusion. For steady-state visual stimulation with 30 s full-field flickering, functional DWS signal changes of 3.0-3.8% were found [33] which can be traced back to the functional increase of rCBF of 60-80% measured with PET [37].

In addition to these slow DWS signals, Li et al. [35] reported that short (8.2s) visual stimulation blocks elicit a transient slowing of cortical dynamics localized on the left hemisphere of the visual cortex which is not explained by the current models of neurovascular coupling [38]. While NIRS and DWS signals yield complementary information on neurovascular coupling, the larger functional signal obtainable with DWS makes this technique attractive for studies in neuroscience.

So far, DWS has not been applied to experiments examining very subtle stimulus differences such as the emotional connotation of words, but it could provide additional and complementary information on hemodynamic changes in response to emotional stimuli.

Combining DWS and EEG requires an experimental paradigm that provides sustained stimulation over several seconds and at the same time a number of trials sufficient for a satisfying signal-to-noise ratio of the EEG response. Steady-state visual evoked potentials (SSVEPs) offer both these features. They are oscillatory, nearly sinusoidal scalp potentials in response to a repeated visual stimulation presented at frequencies of 4-6 Hz or higher [39,40]. Their main advantage is a very good signal-to-noise ratio for moderate stimulation times, and a sharp peak at the stimulation frequency in the power spectrum of the signal [39]. Further, SSVEPs

provide a unique possibility to study a well-defined and controllable electrophysiological brain response to prolonged stimulation. Hence, SSVEPs are ideally suited for investigating simultaneous EEG and metabolism-based techniques like optical measurements of brain activity. Larger SSVEP amplitudes were found during viewing of emotional in comparison to neutral pictures [13,14], but so far no study has investigated SSVEP modulation during processing of emotional words. As detailed above, the neural dynamics underlying processing of emotional words are in many ways similar to the processing of emotional pictures and lead to increased attention and resource allocation. However, the emotional significance of words lies in their symbolic nature, which is not primarily conveyed by external stimulus characteristics, but by the activated associations. Therefore, during prolonged and sustained stimulation, emotion modulation for words may differ from those of pictures.

Here, we investigate SSVEPs and DWS signals evoked by pleasant, unpleasant, and neutral words. In line with previous literature [17,20,24,28], we reasoned that emotional (pleasant and unpleasant) words would attract more attention than neutral words. Most SSVEP studies show higher SSVEPs for attended than for unattended stimuli [41,42]. In parallel, extant SSVEP studies on affective picture processing [13,14] have reported larger responses to emotional than to neutral pictures. However, two recent studies suggest that, under certain circumstances, SSVEP power can be reduced rather than increased by attention, e.g. when narrowing the spatial focus of endogenous attention [43] and depending on the oscillating brain network [44]. So far, no study examined SSVEP modulation by emotional words, precluding specific directional predictions. Based on previous research showing differential processing of emotional and neutral stimuli, we hypothesized that SSVEP power as well as the DWS signal would be different for emotional compared to neutral words.

Methods

Participants

Twelve students from the University of Konstanz (six women and six men, mean age 22.7 years) with normal or corrected-to-normal vision and no history of

neurological or psychiatric illness volunteered to participate in the experiment. All participants were right-handed and native German speakers and gave informed consent. The study protocol was approved by the University's Ethical Review Board. The optical data of two participants had to be discarded because of low photon count rate, thus only ten optical data sets were used for the DWS data analysis.

Stimuli

30 different German nouns previously rated by an independent sample on the dimensions of valence, arousal and concreteness [21] were used as stimulus material. According to their valence ratings, the stimuli were grouped into three emotion categories: nouns with pleasant, neutral and unpleasant valence. One-way repeated measures ANOVAs confirmed that the categories differed significantly in valence ($F(2,27) = 981.85, p < 0.0001$), with Tukey tests showing differences between all categories (neutral vs. positive, $p = 0.0001$, neutral vs. unpleasant, $p = 0.0001$, pleasant vs. unpleasant, $p = 0.0001$). Differences were also found regarding arousal ($F(2,27) = 79.70, p < 0.0001$), with Tukey tests revealing arousal ratings higher for pleasant than for neutral ($p = 0.0001$), and higher for unpleasant than for neutral words ($p = 0.0001$), whereas pleasant and unpleasant words did not differ in arousal ($p = 0.179$). There were no differences between the categories regarding possible confounds such as word length ($F(2,27) = 0.01, p = 0.987$), concreteness ($F(2,27) = 0.03, p = 0.970$), and word frequency ($F(2,27) = 0.01, p = 0.987$). All means and standard deviations for stimulus characteristics are listed in Table 1. Valence and arousal ratings in Table 1 are based on pre-existing normative ratings. Table 2 shows the respective valence and arousal ratings as obtained from the present experimental participants. The actual German stimuli, together with their English translations are given in Table 3.

Procedure

After general explanations about the experiment and the electrophysiological and optical recordings, subjects signed an informed-consent form and were asked standardized questions about age, handedness, current or previous psychiatric and neurological illness and in

Table 1 Characteristics of stimulus words

	Valence		Arousal		Concreteness		Word Length		Word Frequency	
	M	SD	M	SD	M	SD	M	SD	M	SD
Unpleasant	1.69	0.41	5.93	0.82	4.65	0.88	6.40	1.71	194.8	349.7
Neutral	4.99	0.10	1.93	0.34	4.75	2.23	6.30	1.34	195.7	152.4
Pleasant	8.18	0.38	5.31	0.97	4.83	1.30	6.40	1.71	211.3	232.6

The emotion categories differed only in valence and arousal ratings, but were comparable regarding concreteness, word length and word frequency [21]. M: mean; SD: standard deviation.

Table 2 Results of stimulus ratings in the present sample

	Valence		Arousal	
	M	SD	M	SD
Unpleasant	2.13	0.53	6.32	1.07
Neutral	4.93	0.17	2.09	0.30
Pleasant	8.18	0.31	6.26	0.99

The emotion categories differed significantly in valence and arousal ratings. M: mean; SD: standard deviation.

particular epilepsy as potential exclusion factors. After placing the EasyCap and attaching all electrodes, subjects were asked to lie down on the examination couch and the optical fiber bundles were placed at the back of the head. The stimulation was shown on a 17" TFT computer monitor positioned 40 cm above the subject's head. The experimental setup is shown in Figure 1.

The stimuli were presented in white *Arial* style letters with a size of 72 points on a black background, resulting in a stimulus height of 3.0 cm and width of 7.8-19.7 cm on the screen. In order to detect the exact timing of stimulus on- and offsets with an optical fiber placed at the border of the screen, a white, 2 cm wide, frame was presented together with the words. Each of the 30 different flickering words was presented three times in randomized order, resulting in a total number of 90 trials. Each trial consisted of 8.2 s flickering at a steady-state frequency of 7.5 Hz, i.e., 66.7 ms "On" and 66.7 ms "Off" in each cycle. Trials were separated by a baseline period during which a small red fixation cross was shown in the centre of the otherwise black screen. The duration of the inter-trial baseline period was chosen at random from a flat distribution between 8 and 12 s, in order to avoid synchronization of pulsation with the stimulation. Every 15 trials (after about five minutes), subjects were allowed to have a short break and close their eyes. The whole experimental stimulation took about 30 minutes and was controlled using Presentation software.

Table 3 Stimulus words in the three emotion categories

Neutral	Pleasant	Unpleasant
Apparat (<i>apparatus</i>)	Ferien (<i>holidays</i>)	Lügner (<i>liar</i>)
Stirn (<i>forehead</i>)	Freude (<i>delight</i>)	Alptraum (<i>nightmare</i>)
Begriff (<i>concept</i>)	Orgasmus (<i>orgasm</i>)	Opfer (<i>victim</i>)
Bewohner (<i>inhabitant</i>)	Geschenk (<i>present</i>)	Elend (<i>misery</i>)
Ding (<i>thing</i>)	Glück (<i>happiness</i>)	Folter (<i>torture</i>)
Thema (<i>theme</i>)	Liebe (<i>love</i>)	Selbstmord (<i>suicide</i>)
Geschirr (<i>tableware</i>)	Spaß (<i>fun</i>)	Kerker (<i>dungeon</i>)
Inhalt (<i>content</i>)	Umarmung (<i>hug</i>)	Diktator (<i>dictator</i>)
Papier (<i>paper</i>)	Kuss (<i>kiss</i>)	Krieg (<i>war</i>)
Quadrat (<i>square</i>)	Vergnügen (<i>amusement</i>)	Panik (<i>panic</i>)

The stimulus words are listed in German language (as presented in the experiment) and with English translation in parentheses.

After the experiment and after detaching the optical probe and the EEG electrodes, subjects were asked to rate the previously seen words according to their perceived valence and arousal using the Self Assessment Manikin Rating Scale [45] on a different PC for comparison of individual ratings from experimental participants with the a priori ratings.

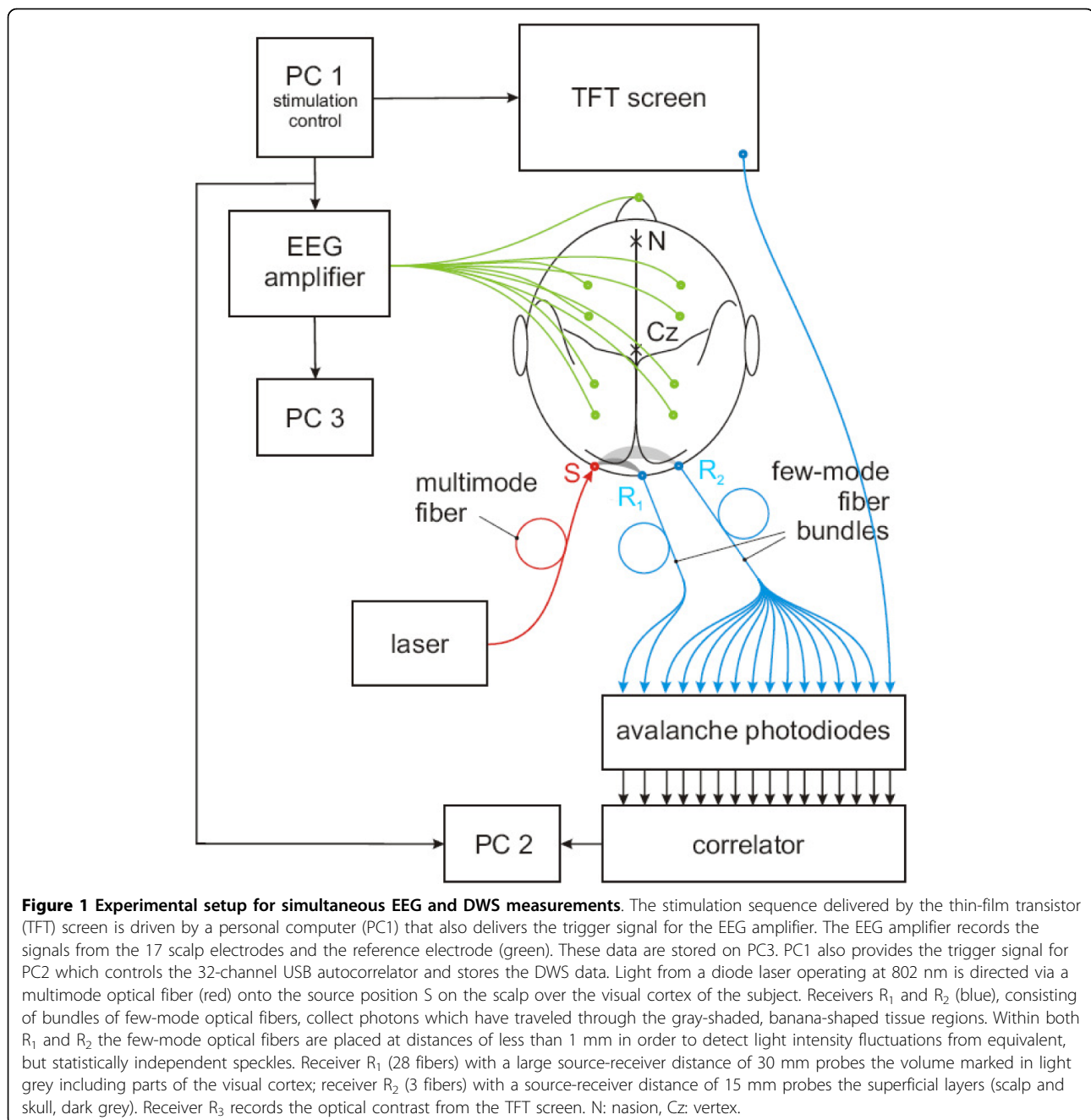
EEG recording and processing

Electrophysiological brain activity was recorded with 17 Ag/AgCl scalp electrodes at positions FPz, Fz, FT7, FT8, Cz, C3, C4, TP7, TP8, Pz, P3, P4, P9, P10, Oz, O1, and O2 of the international 10/20 system [46], using an EasyCap for electrode fixation and NEUROSCAN SynAmps amplifier and Acquire386 software. The reference was placed at the tip of the nose and the ground electrode behind the right ear. The EEG signal was high-pass filtered (0.1 Hz, 24dB/oct) online and digitized at a rate of 500 Hz. Impedances were kept well below 5 kΩ. Further, the electrocardiogram as well as horizontal and vertical electrooculograms, were recorded for artifact monitoring.

Offline, EEG data was filtered with a high pass (0.5 Hz, 6 dB) and a 50 Hz notch filter to reduce noise from the unshielded laboratory environment. Eye artifacts were corrected using the topographical correction algorithm implemented in the BESA software [47]. For analysis of the experimental conditions, power spectral densities of the EEG signal over time windows of 8192 ms after stimulus onset were computed by fast Fourier transformation (FFT), using apodization with a \cos^2 -window (Hanning window). The resulting frequency spectra at the occipital electrodes O1, Oz, and O2, which were closest to the DWS probe and which cover the typical peak of the SSVEP, were averaged and the steady-state-intensity was extracted by integration over the interval 7.320 - 7.686 Hz.

DWS measurements

Figure 1 shows the experimental set-up: A diode laser operating at a wavelength of 802 nm was used as a light source. The laser beam was coupled into a multimode optical fiber, which was positioned over the occipital cortex, 15 mm above the Oz electrode. Two receivers collected the emitted light at lateral distances of 30 mm (R_1) and 15 mm (R_2) on the left of the source, respectively. While the short-distance optical probe is mainly sensitive to the dynamics within superficial tissue layers (scalp and parts of the skull), receiver R_1 is additionally sensitive to cerebral blood flow. This setup resulted in a probing of cortical activity approximately 15 mm above and 15 mm on the left relatively to the Oz electrode position. Receivers R_1 and R_2 were bundles of 28 and 3 few-mode fibers, respectively; each of the fibers was connected to an avalanche photodiode (APD). From the



pulse output of the APDs the temporal autocorrelation function of the fluctuating photon count rate was computed by an autocorrelator. The integration time per measurement and resulting temporal resolution of the DWS measurement was $T' = 26.2$ ms (see Figure 1). Further details on the DWS brain imaging technique and setup can be found in [33,36].

From the bundle-averaged field autocorrelation functions that were calculated separately for receivers R₁ and R₂, the decay time τ_d (the actual DWS signal) was calculated. The decay time τ_d serves as an indicator of the

scatterer dynamics within the banana-shaped tissue regions spanned by the source and receiver fibers and contains information regarding regional cerebral blood flow changes. Further, the photon count rate R (corresponding to the NIRS signal) was measured as the number of detected photons per integration time T' .

Data analysis

EEG

The electrophysiological steady-state intensities of the three different experimental conditions (neutral, pleasant

and unpleasant words) at the electrode positions O1, Oz, and O2, where the steady-state signal usually peaks and which are closest to the DWS sensor were compared with two-way repeated measures ANOVA.

DWS

For each stimulation trial, normalization of the decay times $\tau_d(t)$ and photon count rates $R(t)$ with their respective baseline-averaged values, yielded the relative decay time $\tau_{d,stim}(t)$ and relative photon count rate $R_{stim}(t)$, respectively, as a function of time t after stimulation onset. Mean relative decay times $\langle\tau_{d,stim}\rangle$ and mean relative photon count rates $\langle R_{stim}\rangle$ were obtained by averaging $\tau_{d,stim}(t)$ and $R_{stim}(t)$, respectively, over single stimulation trials.

The mean relative decaytime $\langle\tau_{d,stim}\rangle$ (reflecting the cortical blood flow during the stimulation phase relative to the one during the baseline) and the mean relative count rate $\langle R_{stim}\rangle$ of all stimulation trials were compared to the baseline condition in order to test the hypothesis that DWS detects functional brain activity. In a second step, $R_{stim}(t)$ and $\tau_{d,stim}(t)$ for each emotional condition were averaged separately and compared with repeated measures ANOVAs.

Results

Results of the rating task

ANOVAs on the arousal and valence ratings in the present sample (see Table 2) confirmed the previously obtained results [[21], and see Table 1]: significant differences for the three categories regarding valence ($F(2, 27) = 682.4$, $p < 0.0001$) and arousal ($F(2, 27) = 79.1$, $p < 0.0001$) were found. Tukey tests showed significant differences in rated valence between all categories ($p < 0.001$) and differences in rated arousal between neutral and both categories of emotional words ($p < 0.001$), but not between pleasant and unpleasant words ($p = 0.988$).

EEG results

Steady-state intensities were compared in a two-way repeated measures ANOVA, resulting in a significant main effect for emotional category ($F(2, 22) = 3.47$, $p = 0.049$). Figure 2 depicts the EEG grand average in the time domain (event-related potential) at electrode O1. Figure 3 shows the grand average power spectrum at electrode O1. Time-resolved Gabor filtering [48] was used to investigate whether the pattern of SSVEP emotion modulation changed in the course of the SSVEP stimulation. Since this was not the case, results are not further reported here. There was a trend for electrode position ($F(2, 22) = 2.75$, $p = 0.086$), and also for the interaction between emotional category and electrode position ($F(4, 44) = 2.34$, $p = 0.070$), reflecting a stronger emotion effect at positions Oz and O1 compared to O2 (see Figure 4). To investigate the direction of the

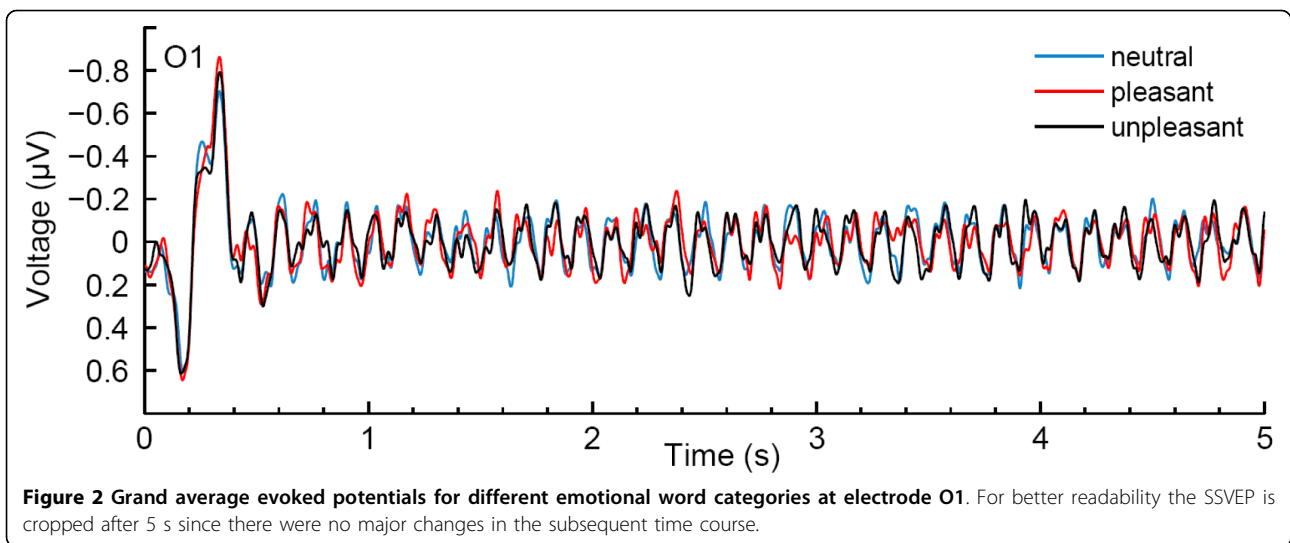
main effect for emotional category, planned comparisons with Tukey tests were conducted, revealing differences in SSVEP power only between neutral and pleasant words ($p = 0.039$), with pleasant words eliciting smaller SSVEP power than neutral ones.

DWS results

Regarding the optical data, t -tests revealed significant differences between stimulation and baseline in the mean relative DWS signals, resulting in an increase of 1.55% for the long-distance receiver R_1 , $t(9) = 2.45$, $p = 0.037$, and an increase of 1.32% for the short-distance receiver R_2 , respectively, $t(9) = 4.14$, $p = 0.003$. No stimulation-dependent significant differences were found in the photon count rate for either R_1 ($t[9] = 0.86$, $p = 0.411$) or R_2 ($t[9] = 1.06$, $p = 0.316$). All stimulation-dependent changes are shown in Figure 5. Regarding the results of repeated measures ANOVAs on possible effects of emotional word conditions, no differences between word categories were found in the photon count rate or in the decaytime at both source-receiver distances. The low-pass filtered (1 Hz cut-off, 5th order Butterworth) grand averages of the decaytime time course for neutral, pleasant and unpleasant words are presented in Figure 6.

Discussion

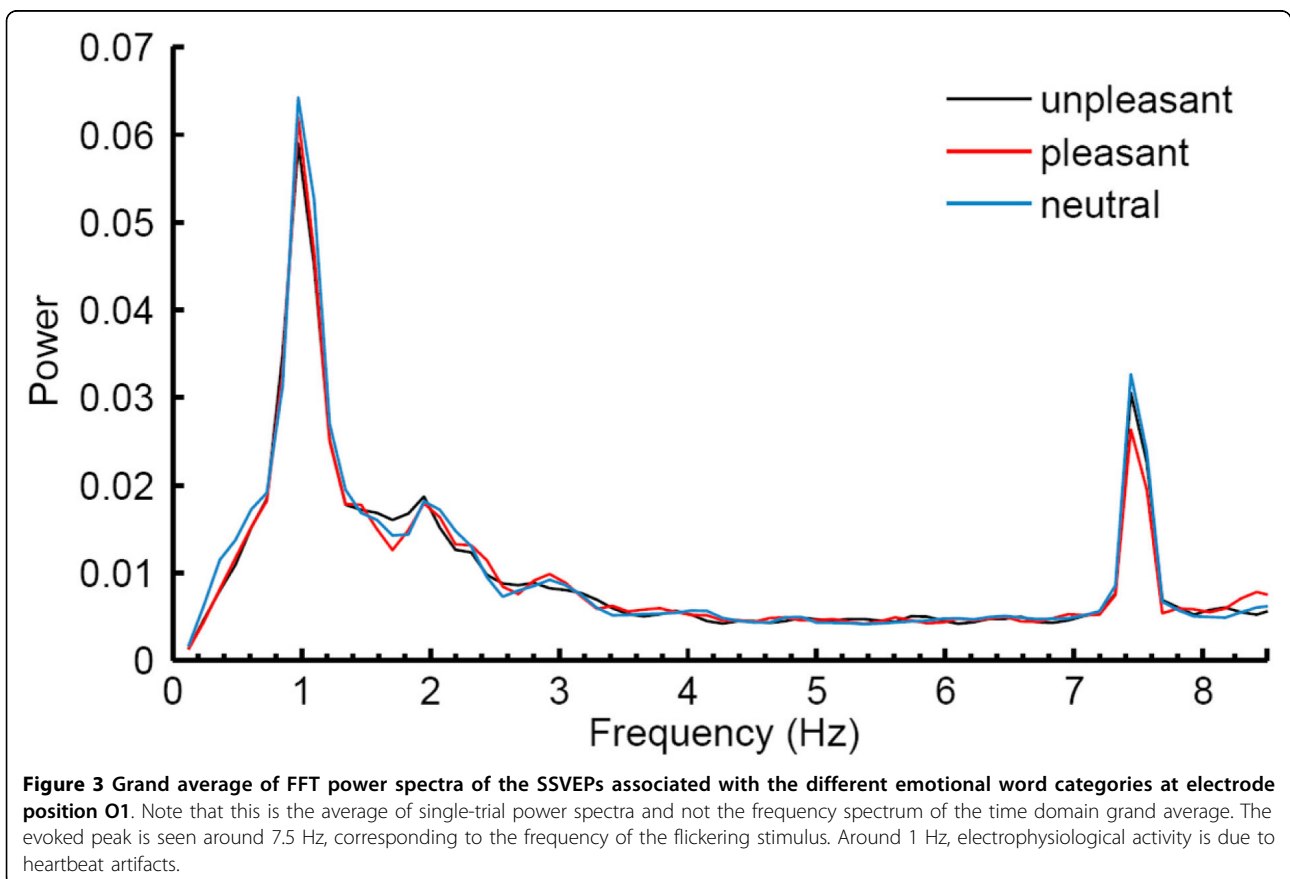
By simultaneously measuring DWS and EEG, the present study aimed to investigate visual cortex activity in response to the presentation of flickering emotional and neutral words. Both methods revealed effects of stimulation, but an emotional modulation was only observed in the SSVEP, not in the DWS signal. DWS showed a statistically significant difference in mean decay time between stimulation and baseline periods for both long- and short-distance receivers R_1 and R_2 . While the functional signal from the long-distance receiver replicates the previously reported transient slowing of cortical dynamics [35] and extends it to written word stimuli, we find a functional signal also in the data from the short-distance receiver which might arise from residual sensitivity of the short-distance sensor to cortical dynamics, or from increased blood flow in the scalp due to changes in peripheral perfusion induced by the stimulation. No differences in the DWS signals could be detected when comparing the three different emotional word conditions. Given the relatively subtle psychological difference between emotionally positive, negative and neutral words and the modest sample size of ten participants, DWS as implemented in this study may at present not be sensitive enough to detect these small effects. Theoretically, since the present DWS instrumentation allowed recording only from a part of the visual cortex, existing activation differences suggested by some

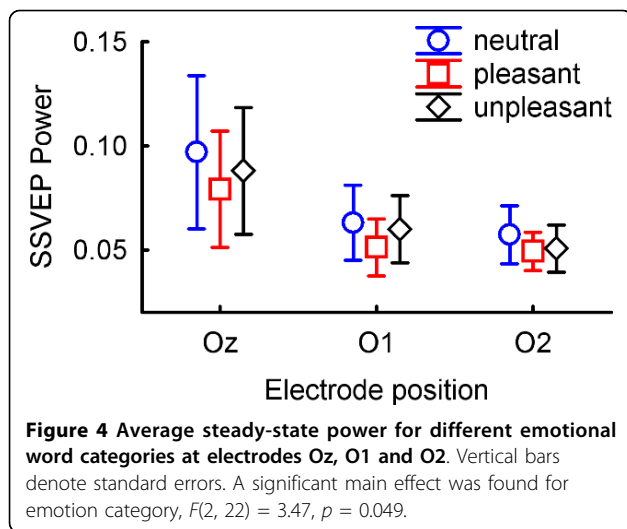


previous fMRI studies [28-30] may show a regional distribution different from the one captured by the present design. The DWS sensors were placed 15 mm above Oz, thus one might argue that they were not measuring activity of the same cortical areas as reflected by the SSVEPs. However, given the limited conductivity of the

skull leading to spatial low-pass filtering of the EEG signal, the SSVEPs recorded at the occipital electrodes reflects activation of a larger brain area, probably including the volumes probed by the optical experiment.

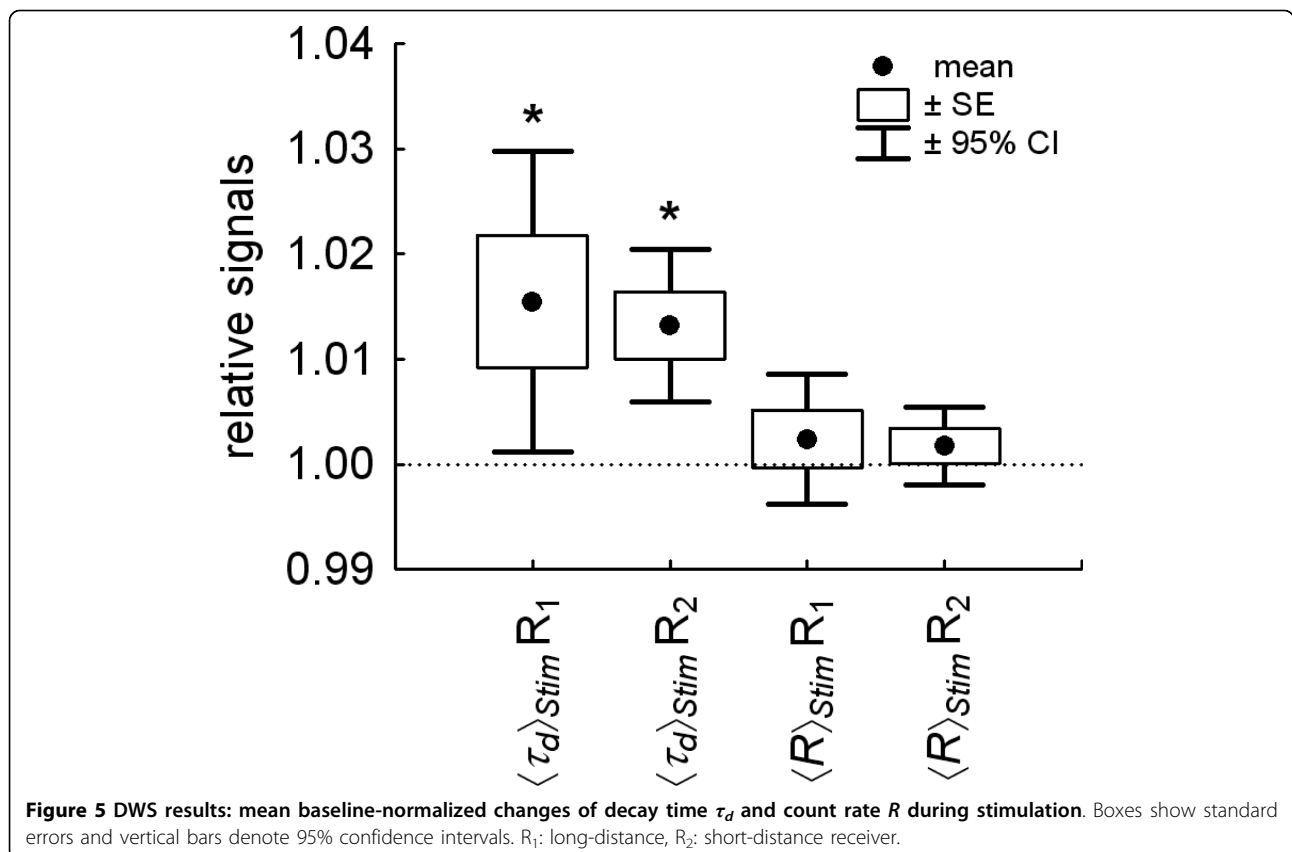
Two previous studies using a related optical technique, NIRS, found emotion effects, particularly for





pleasant stimuli from the IAPS picture set [7,8]. However, these effects were less clear-cut than corresponding EEG effects. This pattern could result from the lower sensitivity of metabolic contrasts to transient events. Moreover, emotional modulation of visual processing is generally considerably larger for colored pictures than for perceptually much simpler written words [22,49,50].

Thus, future DWS studies of affective processing using pictures from the IAPS set which are perceptually more engaging may well reveal significant effects. Conversely, since no previous NIRS study has investigated signal modulations by emotional words, it is unclear whether a corresponding experiment using conventional NIRS measurement would yield significant results. In the present data, no effect was obtained regarding the photon count rate which is the signal most closely reflecting NIRS. The transmitted light intensity measured by NIRS is proportional to the photon count rate measured in our DWS experiments. The present study found no statistically significant differences in photon count rate due to emotion categories. This could be due to the fact that the DWS photon count rate was measured from the speckle signal, which intrinsically has large fluctuations, and therefore leads to considerably lower signal-to-noise ratio than typical NIRS signals. An additional explanation for the absence of statistically significant functional NIRS signals in our data may be that the photon count rate measured at the laser wavelength of 802 nm is sensitive to changes of total hemoglobin concentration; these are smaller than the functional concentration changes of oxy-hemoglobin that are measured with standard NIRS instruments using two wavelengths located



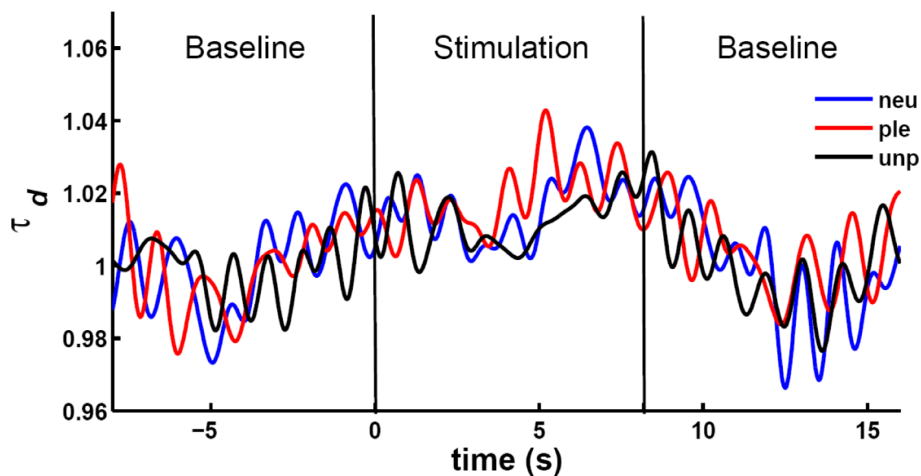


Figure 6 Grand average time course of the relative decay time τ_d measured with the large-distance receiver R_1 . A low-pass 1 Hz Butterworth filter was applied to facilitate visual inspection of the signal (see also [8]). Emotionally neutral, pleasant and unpleasant values of the presented words are labeled with 'neu' (blue line), 'ple' (red line) and 'unp' (black line), respectively.

above and below the isosbestic point of hemoglobin. Given these important limitations, the question whether emotional content-dependent differences during word processing can be obtained using blood flow-based measures other than fMRI thus begs further research.

Regarding the SSVEPs, positive words elicited significantly smaller electrophysiological responses than neutral words at occipital electrode positions. The finding of larger differences between positive and neutral than negative and neutral words in emotion word processing is in line with some other previous reports [20,23,26,30,51], but the direction of our finding diverges from results of enhanced SSVEP power for emotional in comparison to neutral IAPS pictures [13,14]. However, to our knowledge, the present study is the first to use a typical SSVEP paradigm to investigate the visual processing of emotional words, which may differ from the processing of emotional pictures.

The higher SSVEP amplitudes for neutral words cannot be due to confounding factors such as word length, frequency, or concreteness, as these factors were matched between conditions. Further, the ratings of valence and arousal of the word stimuli by the participants also confirmed the data previously obtained by Kissler et al. [21], ruling out the possibility that our sample of subjects was different with regard to valence or arousal judgments.

The present results may be accounted for by other factors: First, most previous studies investigating emotion effects on SSVEP amplitudes used a stimulation frequency between 10 and 13 Hz (e.g., [13,52,53]), which might be functionally different from lower frequencies. Investigating different driving frequencies, some authors found enhanced SSVEP amplitudes to attended stimuli

for both 12 and 8.6 Hz [41], but the interplay between stimulation frequency and attentional modulation of SSVEPs is not entirely understood yet: In a first systematic investigation of the effects of spatial attention and driving frequency on SSVEPs, Ding and colleagues [44] found higher amplitudes for non-attended stimuli at a stimulation frequency of 9.2 Hz, when a competing attended stimulus was presented to the fovea, but smaller amplitudes when the competing attended stimulus was located in the periphery. Similarly, Chen et al. [43], using a driving frequency of 8.3 Hz and measuring MEG, found a reduction of steady-state visual evoked field amplitude to an attended stimulus when attention was directed to the center of the visual field.

However, it is important to note that these studies did not investigate emotional or exogenous attention but rather endogenous spatial attention. These two forms of attention have partly different underlying mechanisms and effects on visual processing. Whereas the deliberate (endogenous) allocation of attention to certain spatial positions requires top-down control of visual areas by fronto-parietal attention networks, enhanced attention to motivationally salient, emotional stimuli is considered to be automatic and bottom-up, involving the amygdala and its reentrant connections to modulate visual cortex activation [3,54].

Therefore, our results might be due to the specific characteristics of word processing. SSVEPs are responses to stimulation of several seconds and they do not necessarily show the same effects as ERPs, which reflect the immediate first reaction to a stimulus. Regarding emotional picture stimuli, enhanced amplitudes have been observed in ERPs and in SSVEP [10-13,55]. However, words differ from pictures in at least two very important

aspects. First, they constitute perceptually relatively simple stimuli, in our case white letters on black ground. On a purely perceptual level, words are far easier to process than colorful photographs of complex scenes, for which visual analysis of all details and relevant aspects should take longer. Letter streams per se are very boring stimuli, as everyone will confirm who has been confronted with a text in an unfamiliar language. The import of a familiar word depends on its meaning, on the associated concepts and associated sensory representations it evokes. This mainly symbolic nature of words is the second and most important aspect distinguishing words from pictures, giving rise to the possibility of different reaction patterns to emotional words than to other, non-symbolic, emotional stimuli. While the initial response to reading an emotional word and seeing an emotional picture as reflected by ERP modulations seems very similar, subsequent sustained activity may diverge. Both emotional pictures and words activate subcortical emotion circuits [56-58]. However, as the emotional response is not caused by the letters on the screen themselves, but their semantic content, it is possible that subsequent stronger processing of emotional relevance takes place at a higher, associative level, which may result in a shift of attention to internal processes rather than external stimulation. This activity in associative cortices is probably not oscillating at the stimulation frequency, but may lead to a decrease of the SSVEP signal due to decreased primary visual processing. Indeed, electrocortical activity enhancements in response to emotional words have been most consistently found at processing stages that reflect activity outside the primary visual cortex [20,21]. Moreover, in line with the possibility of reductions in purely perceptual processing, Herbert et al. [19,27] showed that specifically pleasant adjectives are processed more deeply than neutral ones and that processing of pleasant adjectives leads to a stronger startle reaction in comparison to neutral words, reflecting a more internal focus of attention and higher costs of reorienting attention to external startle cues. From subjective experience, readers know the absorbing effects of exciting novels, leading almost to forgetting of external time and space, while creating an internal world of its own. Therefore, deeper internal processing of pleasant words may be associated with decreased activity in primary visual cortex as reflected by the observed reduced SSVEP amplitudes.

In summary, the present study demonstrates stimulation-driven modulation of both the DWS signal and the SSVEP. The SSVEP, but not the DWS signal, revealed differences due to the emotional content of the words used for stimulation. By showing a relatively smaller SSVEP response to stimulation with pleasant than with neutral words the direction of the emotion effect

diverges from previous findings of studies using IAPS pictures. We suggest that this effect reflects specific processing characteristics induced by emotional words.

Conclusions

This is the first study to concurrently investigate the modulation of diffusing-wave spectroscopy, an optical measure of brain function, and steady state visually evoked potentials (SSVEPs), an electrophysiological measure of brain functioning, by stimulation with trains of flickering positive, negative, and neutral words. Both measures responded to the stimulation as reflected in increased activity as compared to baseline. However, only SSVEPs captured differences elicited by the stimulation's emotional content. Emotional modulation was reflected in a reduction in SSVEP power in response to pleasant as compared to neutral words. While a more pronounced modulation of cerebral activity during processing of pleasant words is in line with previous literature, the reduction of SSVEP power is a new finding, probably due to the symbolic nature of emotional language stimuli, which, similar to emotional pictures, elicits enhanced processing at temporally early stages, but then leads to increased internal processing at the cost of primary sensory activity during prolonged stimulation.

Acknowledgements

We thank M. Wolf, B. Rockstroh and T. Elbert for helpful discussions. This work is funded by the Deutsche Forschungsgemeinschaft (DFG) and the Center for Applied Photonics (CAP) Konstanz.

Author details

¹Department of Psychology, University of Konstanz, Universitätsstrasse 10, 78457 Konstanz, Germany. ²Department of Physics, University of Konstanz, Universitätsstrasse 10, 78457 Konstanz, Germany. ³Swiss Center for Affective Sciences, University of Geneva, Rue des Batoirs 7, 1205 Geneva, Switzerland.

Authors' contributions

LK designed and programmed the experiment, recorded and analyzed the electrophysiological data and wrote the manuscript. JK and TG contributed to the design of the study and to the writing of the manuscript. TG; JL and MN designed and set up the DWS experiments. MN set up the synchronization of EEG and DWS and was in charge of the DWS recordings. JL analyzed the optical data. JK and LK set up the EEG in the DWS environment. All authors read and approved the final manuscript.

Received: 22 February 2010 Accepted: 27 July 2010

Published: 27 July 2010

References

1. Brosch T, Sander D, Pourtois G, Scherer KR: **Beyond fear: rapid spatial orienting toward positive emotional stimuli.** *Psychological Science* 2008, **19**:362-370.
2. Dolan RJ: **Emotion, cognition, and behavior.** *Science* 2002, **298**:1191-1194.
3. Vuilleumier P: **How brains beware: neural mechanisms of emotional attention.** *Trends in Cognitive Sciences* 2005, **9**:585-594.
4. Bradley MM, Sabatinelli D, Lang PJ, Fitzsimmons JR, King W, Desai P: **Activation of the visual cortex in motivated attention.** *Behavioral Neuroscience* 2003, **117**:369-380.
5. Knight DC, Smith CN, Stein EA, Helmstetter FJ: **Functional MRI of human Pavlovian fear conditioning: patterns of activation as a function of learning.** *Neuroreport* 1999, **10**:3665-3670.

6. Lang PJ, Bradley MM, Fitzsimmons JR, Cuthbert BN, Scott JD, Moulder B, Nangia V: **Emotional arousal and activation of the visual cortex: an fMRI analysis.** *Psychophysiology* 1998, **35**:199-210.
7. Herrmann MJ, Huter T, Plichta MM, Ehlis A-C, Alpers GW, Mühlberger A, Fallgatter AJ: **Enhancement of activity of the primary visual cortex during processing of emotional stimuli as measured with event-related functional near-infrared spectroscopy and event-related potentials.** *Human Brain Mapping* 2008, **29**:28-35.
8. Minati L, Jones CL, Gray MA, Medford N, Harrison NA, Critchley HD: **Emotional modulation of visual cortex activity: a functional near-infrared spectroscopy study.** *Neuroreport* 2009, **20**:1344-50.
9. Lang PJ, Bradley MM, Cuthbert BN: *International Affective Picture System (IAPS): Technical Manual and Affective Ratings* Gainesville: University of Florida, Center for Research in Psychophysiology 1997.
10. Junghöfer M, Bradley MM, Elbert TR, Lang PJ: **Fleeting images: a new look at early emotion discrimination.** *Psychophysiology* 2001, **38**:175-178.
11. Schupp HT, Cuthbert BN, Bradley MM, Cacioppo JT, Ito T, Lang PJ: **Affective picture processing: the late positive potential is modulated by motivational relevance.** *Psychophysiology* 2000, **37**:257-261.
12. Schupp HT, Junghöfer M, Weike AI, Hamm AO: **Attention and emotion: an ERP analysis of facilitated emotional stimulus processing.** *Neuroreport* 2003, **14**:1107-1110.
13. Keil A, Gruber T, Müller MM, Moratti S, Stolarova M, Bradley MM, Lang PJ: **Early modulation of visual perception by emotional arousal: evidence from steady-state visual evoked brain potentials.** *Cognitive, Affective & Behavioral Neuroscience* 2003, **3**:195-206.
14. Moratti S, Keil A, Stolarova M: **Motivated attention in emotional picture processing is reflected by activity modulation in cortical attention networks.** *NeuroImage* 2004, **21**:954-964.
15. Amaral DG, Behniea H, Kelly JL: **Topographic organization of projections from the amygdala to the visual cortex in the macaque monkey.** *Neuroscience* 2003, **118**:1099-1120.
16. LeDoux JE: **Emotion circuits in the brain.** *Annual Review of Neuroscience* 2000, **23**:155-184.
17. Kissler J, Assadollahi R, Herbert C: **Emotional and semantic networks in visual word processing: insights from ERP studies.** *Progress in Brain Research* 2006, **156**:147-183.
18. Kanske P, Kotz SA: **Concreteness in emotional words: ERP evidence from a hemifield study.** *Brain Research* 2007, **1148**:138-148.
19. Herbert C, Kissler J, Junghöfer M, Peyk P, Rockstroh B: **Processing of emotional adjectives: Evidence from startle EMG and ERPs.** *Psychophysiology* 2006, **43**:197-206.
20. Herbert C, Junghöfer M, Kissler J: **Event related potentials to emotional adjectives during reading.** *Psychophysiology* 2008, **45**:487-498.
21. Kissler J, Herbert C, Peyk P, Junghöfer M: **Buzzwords: early cortical responses to emotional words during reading.** *Psychological Science* 2007, **18**:475-480.
22. Kissler J, Herbert C, Winkler I, Junghöfer M: **Emotion and attention in visual word processing: an ERP study.** *Biological Psychology* 2009, **80**:75-83.
23. Schacht A, Sommer W: **Time course and task dependence of emotion effects in word processing.** *Cognitive, Affective & Behavioral Neuroscience* 2009, **9**:28-43.
24. Fischler I, Bradley M: **Event-related potential studies of language and emotion: words, phrases, and task effects.** *Progress in Brain Research* 2006, **156**:185-203.
25. Williamson S, Harpur TJ, Hare RD: **Abnormal processing of affective words by psychopaths.** *Psychophysiology* 1991, **28**:260-273.
26. Schapkin SA, Gusev AN, Kuhl J: **Categorization of unilaterally presented emotional words: an ERP analysis.** *Acta Neurobiologiae Experimentalis* 2000, **60**:17-28.
27. Herbert C, Kissler J: **Motivational priming and processing interrupt: Startle reflex modulation during shallow and deep processing of emotional words.** *International Journal of Psychophysiology* 2010, **76**:64-71.
28. Isenberg N, Silbersweig D, Engelen A, Emmerich S, Malavade K, Beattie B, Leon AC, Stern E: **Linguistic threat activates the human amygdala.** *Proceedings of the National Academy of Sciences of the United States of America* 1999, **96**:10456-10459.
29. Tabert MH, Borod JC, Tang CY, Lange G, Wei TC, Johnson R, Nusbaum AO, Buchsbaum MS: **Differential amygdala activation during emotional decision and recognition memory tasks using unpleasant words: an fMRI study.** *Neuropsychologia* 2001, **39**:556-573.
30. Herbert C, Ethofer T, Anders S, Junghöfer M, Wildgruber D, Grodd W, Kissler J: **Amygdala activation during reading of emotional adjectives—an advantage for pleasant content.** *Social Cognitive and Affective Neuroscience* 2009, **4**:35-49.
31. Cheung C, Culver JP, Takahashi K, Greenberg JH, Yodh AG: **In vivo cerebrovascular measurement combining diffuse near-infrared absorption and correlation spectroscopies.** *Physics in Medicine and Biology* 2001, **46**:2053-2065.
32. Durduran T, Yu G, Burnett MG, Detre JA, Greenberg JH, Wang J, Zhou C, Yodh AG: **Diffuse optical measurement of blood flow, blood oxygenation, and metabolism in a human brain during sensorimotor cortex activation.** *Optics Letters* 2004, **29**:1766-1768.
33. Jaillon F, Li J, Dietsche G, Elbert T, Gislis T: **Activity of the human visual cortex measured non-invasively by diffusing-wave spectroscopy.** *Optics Express* 2007, **15**:6643-6650.
34. Li J, Dietsche G, Iftime D, Skipetrov SE, Maret G, Elbert T, Rockstroh B, Gislis T: **Noninvasive detection of functional brain activity with near-infrared diffusing-wave spectroscopy.** *Journal of Biomedical Optics* 2005, **10**:44002-44002.
35. Li J, Ninck M, Koban L, Elbert T, Kissler J, Gislis T: **Transient functional blood flow change in the human brain measured noninvasively by diffusing-wave spectroscopy.** *Optics Letters* 2008, **33**:2233-2235.
36. Dietsche G, Ninck M, Ortolf C, Li J, Jaillon F, Gislis T: **Fiber-based multispeckle detection for time-resolved diffusing-wave spectroscopy: characterization and application to blood flow detection in deep tissue.** *Applied Optics* 2007, **46**:8506-8514.
37. Ito H, Takahashi K, Hatazawa J, Kim SG, Kanno I: **Changes in human regional cerebral blood flow and cerebral blood volume during visual stimulation measured by positron emission tomography.** *Journal of Cerebral Blood Flow and Metabolism* 2001, **21**:608-612.
38. Buxton RB, Uludağ K, Dubowitz DJ, Liu TT: **Modeling the hemodynamic response to brain activation.** *NeuroImage* 2004, **23**(Suppl 1):S220-233.
39. Regan D: *Human Brain Electrophysiology* New York: Elsevier 1989.
40. Silberstein RB: **Steady-State Visually Evoked Potentials, Brain Resonances, and Cognitive Processes.** *Neocortical Dynamics and Human EEG Rhythms* New York: Oxford University Press/Nunez PL 1995.
41. Morgan ST, Hansen JC, Hillyard SA: **Selective attention to stimulus location modulates the steady-state visual evoked potential.** *Proceedings of the National Academy of Sciences of the United States of America* 1996, **93**:4770-4774.
42. Müller MM, Teder-Sälejärvi W, Hillyard SA: **The time course of cortical facilitation during cued shifts of spatial attention.** *Nature Neuroscience* 1998, **1**:631-634.
43. Chen Y, Seth AK, Gally JA, Edelman GM: **The power of human brain magnetoencephalographic signals can be modulated up or down by changes in an attentive visual task.** *Proceedings of the National Academy of Sciences of the United States of America* 2003, **100**:3501-3506.
44. Ding J, Sperling G, Srinivasan R: **Attentional modulation of SSVEP power depends on the network tagged by the flicker frequency.** *Cerebral Cortex* 2006, **16**:1016-1029.
45. Bradley MM, Lang PJ: **Measuring emotion: the Self-Assessment Manikin and the Semantic Differential.** *Journal of Behavior Therapy and Experimental Psychiatry* 1994, **25**:49-59.
46. American Clinical Neurophysiology S: **Guideline 5: Guidelines for standard electrode position nomenclature.** *Journal of Clinical Neurophysiology* 2006, **23**:107-110.
47. Berg P, Scherg M: **A multiple source approach to the correction of eye artifacts.** *Electroencephalography and Clinical Neurophysiology* 1994, **90**:229-241.
48. Müller MM, Andersen SK, Keil A: **Time Course of Competition for Visual Processing Resources between Emotional Pictures and Foreground Task.** *Cerebral Cortex* 2008, **18**:1892-1899.
49. Keil A: **Macroscopic brain dynamics during verbal and pictorial processing of affective stimuli.** *Progress in Brain Research* 2006, **156**:217-232.
50. Schupp HT, Stockburger J, Codispoti M, Junghöfer M, Weike AI, Hamm AO: **Selective visual attention to emotion.** *The Journal of Neuroscience* 2007, **27**:1082-1089.
51. Kuchinke L, Jacobs AM, Grubich C, Vö MLH, Conrad M, Herrmann M: **Incidental effects of emotional valence in single word processing: an fMRI study.** *NeuroImage* 2005, **28**:1022-1032.

52. Keil A, Moratti S, Sabatinelli D, Bradley MM, Lang PJ: **Additive effects of emotional content and spatial selective attention on electrocortical facilitation.** *Cerebral Cortex* 2005, **15**:1187-1197.
53. Kemp AH, Silberstein RB, Armstrong SM, Nathan PJ: **Gender differences in the cortical electrophysiological processing of visual emotional stimuli.** *NeuroImage* 2004, **21**:632-646.
54. Vuilleumier P, Driver J: **Modulation of visual processing by attention and emotion: windows on causal interactions between human brain regions.** *Philosophical Transactions of the Royal Society of London Series B, Biological Sciences* 2007, **362**:837-855.
55. Keil A, Sabatinelli D, Ding M, Lang PJ, Ihssen N, Heim S: **Re-entrant projections modulate visual cortex in affective perception: evidence from Granger causality analysis.** *Human Brain Mapping* 2009, **30**:532-540.
56. Junghöfer M, Schupp HT, Stark R, Vaitl D: **Neuroimaging of emotion: empirical effects of proportional global signal scaling in fMRI data analysis.** *NeuroImage* 2005, **25**:520-526.
57. Sabatinelli D, Bradley MM, Fitzsimmons JR, Lang PJ: **Parallel amygdala and inferotemporal activation reflect emotional intensity and fear relevance.** *NeuroImage* 2005, **24**:1265-1270.
58. Sabatinelli D, Bradley MM, Lang PJ, Costa VD, Versace F: **Pleasure rather than salience activates human nucleus accumbens and medial prefrontal cortex.** *Journal of Neurophysiology* 2007, **98**:1374-1379.

doi:10.1186/1471-2202-11-85

Cite this article as: Koban et al.: Processing of emotional words measured simultaneously with steady-state visually evoked potentials and near-infrared diffusing-wave spectroscopy. *BMC Neuroscience* 2010 **11**:85.

**Submit your next manuscript to BioMed Central
and take full advantage of:**

- Convenient online submission
- Thorough peer review
- No space constraints or color figure charges
- Immediate publication on acceptance
- Inclusion in PubMed, CAS, Scopus and Google Scholar
- Research which is freely available for redistribution

Submit your manuscript at
www.biomedcentral.com/submit

