

# Integrin activation controls metastasis in human breast cancer

Brunhilde Felding-Habermann<sup>\*†</sup>, Timothy E. O'Toole<sup>‡</sup>, Jeffrey W. Smith<sup>§</sup>, Emilia Fransvea<sup>\*¶</sup>, Zaverio M. Ruggeri<sup>\*</sup>, Mark H. Ginsberg<sup>‡</sup>, Paul E. Hughes<sup>‡</sup>, Nisar Pampori<sup>‡</sup>, Sanford J. Shattil<sup>‡</sup>, Alan Saven<sup>||</sup>, and Barbara M. Mueller<sup>\*\*</sup>

<sup>\*</sup>Departments of Molecular and Experimental Medicine, <sup>‡</sup>Vascular Biology, and <sup>\*\*</sup>Immunology, The Scripps Research Institute; <sup>§</sup>The Burnham Institute; and <sup>||</sup>The Scripps Clinic, La Jolla, CA 92037

Communicated by Ernest Beutler, The Scripps Research Institute, La Jolla, CA, December 6, 2000 (received for review July 13, 2000)

**Metastasis is the primary cause of death in human breast cancer. Metastasis to bone, lungs, liver, and brain involves dissemination of breast cancer cells via the bloodstream and requires adhesion within the vasculature. Blood cell adhesion within the vasculature depends on integrins, a family of transmembrane adhesion receptors, and is regulated by integrin activation. Here we show that integrin  $\alpha v\beta 3$  supports breast cancer cell attachment under blood flow conditions in an activation-dependent manner. Integrin  $\alpha v\beta 3$  was found in two distinct functional states in human breast cancer cells. The activated, but not the nonactivated, state supported tumor cell arrest during blood flow through interaction with platelets. Importantly, activated  $\alpha v\beta 3$  was expressed by freshly isolated metastatic human breast cancer cells and variants of the MDA-MB 435 human breast cancer cell line, derived from mammary fat pad tumors or distant metastases in severe combined immunodeficient mice. Expression of constitutively activated mutant  $\alpha v\beta 3_{D723R}$ , but not  $\alpha v\beta 3_{WT}$ , in MDA-MB 435 cells strongly promoted metastasis in the mouse model. Thus breast cancer cells can exhibit a platelet-interactive and metastatic phenotype that is controlled by the activation of integrin  $\alpha v\beta 3$ . Consequently, alterations within tumors that lead to the aberrant control of integrin activation are expected to adversely affect the course of human breast cancer.**

Complications from metastatic disease are the primary cause of death in breast cancer. Metastasis to bone, lungs, liver, and brain involves dissemination of tumor cells via the bloodstream (1). This process depends on tumor cell intravasation, adhesion to the vessel wall, extravasation, infiltration, and proliferation into target tissue. Many of these steps involve integrins, a family of transmembrane adhesion receptors composed of noncovalently linked  $\alpha$  and  $\beta$  subunits (2). Integrins are known to exist in distinct activation states, which exhibit different affinities for ligand. In general, integrin activation controls cell adhesion (3). Such control is particularly important in the vasculature, where dynamic flow physically opposes cell attachment.

Integrin  $\alpha v\beta 3$  has been implicated in the pathophysiology of malignant tumors. It plays a role on endothelial cells, where it is required for tumor angiogenesis (4). In several malignancies, however, the tumor cells express  $\alpha v\beta 3$ , and this expression correlates with tumor progression in melanoma, glioma, and ovarian and breast cancer (5–8). In breast cancer,  $\alpha v\beta 3$  characterizes the metastatic phenotype, as this integrin is up-regulated in invasive tumors and distant metastases (9). However, a mechanistic role of  $\alpha v\beta 3$  in breast cancer spread has yet to be established. We suggested that an interaction of circulating tumor cells with platelets represents a potential mechanism for tumor cell arrest within the vasculature (10). During blood flow, shear forces oppose cell attachment. Therefore, cells must be equipped with specific adhesive mechanisms to support cell arrest (11). Intravascular attachment of leukocytes and platelets during inflammation and thrombus formation is tightly regulated and depends on integrin activation (12–14). It is unknown

whether integrin activation controls tumor cell arrest in a similar manner. Here we provide evidence that activation of integrin  $\alpha v\beta 3$  promotes breast cancer cell arrest during blood flow and controls the metastatic activity. Consequently, alterations within tumors that support integrin activation are expected to adversely affect the course of human breast cancer.

## Materials and Methods

**Matrix Proteins.** Bovine fibrillar collagen I (Sigma) was used as a thrombogenic matrix in blood perfusion (10). Vitronectin and fibrinogen were purified from human plasma by affinity (15) or gel filtration (16) chromatography. Human plasma fibronectin was purchased from Collaborative Biomedical Products, Bedford, MA.

**Antibodies.** All antibodies were murine monoclonal IgGs except WOW-1, a recombinant Fab fragment (17). They were purified on protein A. mAb VNR1 27.1 (function blocking anti- $\alpha v\beta 3$ ) (18) served to test  $\alpha v\beta 3$ -mediated cell adhesion. mAb 15 (anti- $\beta 3$ ) (18) was conjugated to saporin to select  $\beta 3$ -negative breast cancer cells. mAbs LM609 (anti- $\alpha v\beta 3$ ) (19), T $\gamma$  (anti-thyroglobulin) (control IgG), AV-8 (anti- $\alpha v$ ), AV-10 (anti- $\beta 3$ ) (10), 15F11 (anti- $\alpha v\beta 5$ ) (20), and 12F1 (anti- $\alpha 2$ ) (21) were used to analyze integrin expression.

**Cells and Cell Lines.** MDA-MB 435 human breast carcinoma cells were from J. E. Price (M. D. Anderson Cancer Center, Houston) (22). We derived variants from this cell line by injecting  $5 \times 10^5$  MDA-MB 435 parental cells into the mammary fat pad of adult female C.B 17/1crTac *scid* mice (Taconic Farms). After 8 weeks, tumors were removed, mice were allowed to recover, and tumors were minced and cultured. Three weeks later, mice were killed, and metastases were recovered from bone, lungs, lymph nodes, and the pleural cavity and cultured. PE02JA cells are primary metastatic human breast carcinoma cells isolated from a pleural effusion of a patient with stage IV breast cancer. All cells were grown in Eagle's minimal essential medium plus 10% FBS, pyruvate, L-glutamine, vitamins, and nonessential amino acids (BioWhittaker).

**Isolation of  $\beta 3$  Integrin-Negative MDA-MB 435 Breast Cancer Cells.** A  $\beta 3$ -lacking MDA-MB 435 variant was isolated by exposing the parental cell line to an anti- $\beta 3$ -saporin conjugate (Ab15-Sap) (18, 23). A concentration of Ab 15-Sap of 1.6 nM killed most cells within 3 days. Surviving cells were grown without toxin for 4 days

<sup>†</sup>To whom reprint requests should be addressed at: The Scripps Research Institute, Molecular and Experimental Medicine, MEM 175, 10550 N. Torrey Pines Road, La Jolla, CA 92037. E-mail: brunie@scripps.edu.

<sup>¶</sup>Present address: Clinica Medica II, Piazza G. Cesare 11, 70122 Bari, Italy.

The publication costs of this article were defrayed in part by page charge payment. This article must therefore be hereby marked "advertisement" in accordance with 18 U.S.C. §1734 solely to indicate this fact.

and then analyzed for integrin expression by flow cytometry. Lack of  $\beta 3$ -integrin was routinely confirmed during this study.

**Transfection.** The  $\beta 3$ -negative MDA-MB 435 cell variant was transfected with human  $\beta 3_{WT}$  or mutant  $\beta 3_{D723R}$  cDNA (24) with the use of Lipofectamine (GIBCO/BRL). Stable transfectants were selected in G418 (1.5 mg/ml for 4 weeks). Integrin expression was monitored by flow cytometry. Cell populations expressing  $\alpha v\beta 3_{WT}$  or mutant  $\alpha v\beta 3_{D723R}$  at levels comparable to that of  $\alpha v\beta 3$  in parental MDA-MB 435 cells were collected by sterile FACsorting.

**Flow Cytometry.** MDA-MB 435 cell variants were harvested with PBS/EDTA, and PE02JA cells were harvested with trypsin. Cells were incubated with 10  $\mu\text{g/ml}$  mAb in Tris-buffered saline, 0.5% BSA (30 min on ice); washed; and stained with FITC anti-mouse IgG. To measure binding of the ligand mimetic antibody Fab WOW-1 (17), cells were incubated (30 min, 22 C°) with 10  $\mu\text{g/ml}$  Fab in 137 mM NaCl, 2.7 mM KCl, 3.3 mM  $\text{NaH}_2\text{PO}_4$ , 3.8 mM HEPES, 1 mM  $\text{MgCl}_2$ , 400  $\mu\text{M}$   $\text{CaCl}_2$ , 5.5 mM glucose, and 1 mg/ml BSA, pH 7.4, with or without 250  $\mu\text{M}$   $\text{MnCl}_2$  or 2 mM RGDS peptide. Cells were washed and incubated (30 min on ice) with Alexa-Fluor 488 anti-mouse IgG (BioSource International, Camarillo, CA) and analyzed on a Becton Dickinson FACScan.

**Analytical Perfusion Studies.** Breast cancer cell arrest during blood flow and interaction with platelets was measured as described (10). Briefly, tumor cells were suspended in human blood (anticoagulated with 50 nM H-D-Phe-Pro-Arg-chloro methyl ketone hydrochloride) and perfused over a collagen I matrix at a venous wall shear rate (50  $\text{s}^{-1}$ , 4 dynes/cm<sup>2</sup>). Adhesive events and cell interactions were visualized and recorded by fluorescence video or confocal laser microscopy (Zeiss) and quantified by image acquisition during perfusion at 50 predefined positions and computerized image analysis (METAMORPH; Universal Imaging, Media, PA). Tumor cells were stained with hydroethidine (Polysciences) (red fluorescence) (20  $\mu\text{g/ml}$ , 30 min, 37°C), washed, and mixed with blood containing 10  $\mu\text{M}$  mepacrine (green fluorescence). Blood cells, tumor cells, and platelets acquired green fluorescence and were visualized at 488/515 nm (excitation/emission). The tumor cells were identified by their unique red fluorescence at 543/590 nm. Integrin  $\alpha v\beta 3$ - and  $\alpha \text{IIb}\beta 3$ -dependent adhesive functions were tested with blocking anti- $\alpha v\beta 3$  mAb VNR1 27.1 (18) or anti- $\alpha \text{IIb}\beta 3$  mAb LJ CP8 (25) (80  $\mu\text{g/ml}$ ). Controls were nonfunction-blocking mAbs AV-8 (anti- $\alpha v$ ) and AV-10 (anti- $\beta 3$ ) (10).

**Preparative Perfusion Studies to Isolate Platelet-Interactive Breast Cancer Cells.** Platelet-interactive, arrest-competent variants of the parental MDA-MB 435 breast cancer cell line were isolated during sterile perfusion in human blood on collagen I at a wall shear rate of 50  $\text{s}^{-1}$ . Unbound cells were removed by gentle washing with PBS. Thrombus formation was monitored by phase-contrast microscopy. The coverslips were cultured in complete Eagle's minimal essential medium as above, and decaying blood cells and platelets were removed by media changes. After 3 weeks, proliferating tumor cells from a given slide were pooled and resorted four more times to select breast cancer cells with the platelet-interactive phenotype. We generated five independently sorted MDA-MB 435 cell variants. Their abilities to undergo platelet-mediated arrest during blood flow were analyzed and quantified as above.

**Haptotactic Migration Assay.** Migration of the breast cancer cell variants toward purified extracellular matrix proteins was analyzed in transwells (8- $\mu\text{m}$  pore size; Costar). Filter undersides (duplicates) were coated with 10  $\mu\text{g/ml}$  human vitronectin,

plasma fibronectin, 20  $\mu\text{g/ml}$  fibrinogen, or BSA in PBS and blocked with 5% nonfat dry milk, 0.2% Tween 20 in PBS (2 h at 22°C). Cells were starved overnight in 0.5% FBS, harvested with PBS/EDTA, washed in migration buffer (Eagle's minimal essential medium), and seeded at  $6 \times 10^4$  cells per upper transwell chamber. After 14 h at 37°C, 5%  $\text{CO}_2$ , filters were washed, and cells from the filter tops were removed, fixed, and stained (DiffQuick). Migrated cells were counted in 10 random optical fields per filter by two observers unaware of the conditions.

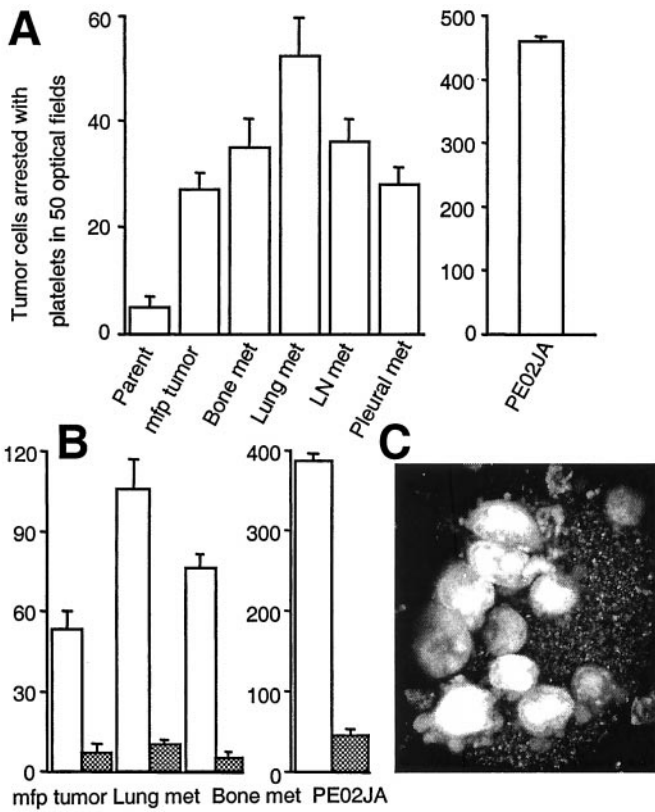
**In Vivo Metastasis Assay.** To compare the metastatic potential of MDA-MB 435 breast cancer cell variants,  $1 \times 10^6$  tumor cells were injected into the lateral tail vein of 6-week-old female C.B17/lcrTac $\text{scid}$  mice (Taconic Farms) ( $n = 8$ ). Forty-two days later, mice were killed, dissected, and analyzed by gross examination. The lungs were excised and fixed in Bouin's solution, and metastatic foci were counted at the lung surface under a dissecting microscope.

## Results and Discussion

**Metastatic Human Breast Cancer Cells Interact with Platelets and Arrest During Blood Flow.** To test the hypothesis that tumor cell binding to platelets during blood flow is a critical property of metastatic tumor cells, we generated tumor- or metastasis-derived variants of the MDA-MB 435 human breast cancer cell line. Parental MDA-MB 435 cells were injected into the mammary fat pads of severe combined immunodeficient mice, and cell variants were retrieved from the resulting tumors or distant metastases to lymph nodes, lungs, bone, and the pleural cavity. These cell variants were compared for their ability to attach to activated platelets and undergo platelet-mediated arrest during blood perfusion *in vitro*. MDA-MB 435 parental cells largely failed to adhere or interact with platelets during blood flow. In contrast, cell variants derived from mammary fat pad tumors or distant metastases adhered and used platelet interaction for cell arrest (Fig. 1A). Importantly, primary metastatic cells isolated from a pleural effusion of a patient with advanced breast cancer exhibited a strong platelet-interactive phenotype and were incorporated into thrombi that formed at a collagen I matrix during blood perfusion. Tumor cells that bound to attached, activated platelets extended pseudopods and established shear-resistant contact with thrombi (Fig. 1C). Therefore, a platelet-interactive phenotype that promotes tumor cell arrest during blood flow correlated with a tumorigenic and metastatic phenotype in the tested human breast cancer cells.

**Activated  $\alpha v\beta 3$  Supports Platelet-Dependent Breast Cancer Cell Arrest During Blood Flow.** We reported that an interaction between melanoma cells and platelets during blood flow is mediated by tumor cell integrin  $\alpha v\beta 3$  and platelet integrin  $\alpha \text{IIb}\beta 3$  in the presence of connecting plasma proteins such as fibrinogen (10). To analyze whether platelet-supported arrest of tumor- or metastasis-derived human breast cancer cells depends on a similar mechanism, the cells were perfused in blood containing function-blocking anti- $\alpha v\beta 3$  or anti- $\alpha \text{IIb}\beta 3$  antibody. Arrest of mammary fat pad tumor- or metastasis-derived MDA-MB 435 cells and primary metastatic human breast cancer cells was strongly inhibited by anti- $\alpha v\beta 3$  (Fig. 1B) and abolished by anti-platelet- $\alpha \text{IIb}\beta 3$  (not shown). Similar results were obtained for all arrest-competent, platelet-interactive variants of the MDA-MB 435 cell model. Therefore, tumor cell integrin  $\alpha v\beta 3$  can mediate breast cancer cell arrest during blood flow through an interaction with platelets.

MDA-MB 435 parental cells failed to bind to platelets and arrest during blood flow, but the tumor- or metastasis-derived cell variants did bind in a platelet- and  $\alpha v\beta 3$ -dependent manner. We tested whether this difference in binding patterns was caused by differences in  $\alpha v\beta 3$  expression levels. However, these differed



**Fig. 1.** Metastatic human breast cancer cells use  $\alpha v \beta 3$  to interact with platelets and arrest during blood flow. (A) Primary metastatic human breast cancer cells (PE02JA) and MDA-MB 435 cell variants derived from mammary fat pad (mfp) tumors or metastases to bone, lungs, lymph node (LN), or the pleural cavity in mice, but not the parental MDA-MB 435 cell population at large, bind to activated platelets and thereby arrest during blood flow. Tumor cells stained with hydroethidine (red fluorescence) were suspended in human blood (containing mepacrine, green fluorescence) and perfused over a thrombogenic collagen I matrix at a venous wall shear rate ( $50 \text{ s}^{-1}$ ,  $4 \text{ dynes/cm}^2$ ) (10). Platelets adhere to the matrix, become activated, and form thrombi, to which arrest-competent tumor cells attach (monitored by video microscopy and image acquisition at predefined positions with filter settings to discern platelet- and tumor cell-specific signals). None of the tumor cells attached directly to the matrix. Thrombus formation was not affected by tumor cell type. (B) Arrest-competent breast cancer cells use integrin  $\alpha v \beta 3$  for attachment. Tumor cells in blood were perfused and analyzed as in A in the absence (open bars) or presence (hatched bars) of function-blocking anti- $\alpha v \beta 3$  mAb VNR1 27.1 (18). Columns represent the means of triplicate runs ( $\pm \text{SD}$ ) with blood from the same donor. (C) Projection of confocal sections through a heteroaggregate of platelets and primary metastatic breast cancer cells, PE02JA (images acquired during perfusion). Attaching to a thrombus, tumor cells extend pseudopods for continued anchorage.

only slightly when comparing MDA-MB 435 parental cells and their tumor- or metastasis-derived variants (Table 1). Therefore, the distinct functional activities of  $\alpha v \beta 3$  suggest that the integrin

is present in a nonactivated state in the parental cell line, but in an activated state in the *in vivo* selected cell variants. The activation state can be defined by the platelet-interactive phenotype.

**Parental MDA-MB 435 Human Breast Cancer Cells Contain a Subpopulation That Stably Expresses Activated  $\alpha v \beta 3$ .** Our data are consistent with the idea that tumor cells expressing platelet-interactive  $\alpha v \beta 3$  are present in the parental MDA-MB 435 cell line at a low frequency and that these were selected *in vivo* during tumor growth and metastasis. The MDA-MB 435 cell line is a polyclonal cell population, but its variants derived from distant metastases in mice are oligo- or monoclonal (26). We therefore asked whether cells expressing the platelet-interactive phenotype are present in the parental MDA-MB 435 parental cell population and can be isolated *in vitro* based on their ability to undergo platelet-mediated arrest during blood flow. To test this possibility, parental cells were suspended in normal donor blood and perfused over a thrombogenic collagen I matrix under sterile conditions. Attached cells were expanded and resorted four times to enrich cells with a platelet-interactive phenotype. Analytical perfusion experiments, in the absence or presence of function-blocking anti- $\alpha v \beta 3$  antibody, showed that all of five independently sorted variant cell populations expressed the platelet-interactive form of integrin  $\alpha v \beta 3$ . The extent of platelet interaction was similar to that observed in the *in vivo* selected metastatic cell variants (Fig. 2A shows two *in vitro* sorted cell populations, 05S05 and 10S05). The expression levels of integrin  $\alpha v \beta 3$  were similar in the parental cell population and the *in vitro* selected variants (Fig. 2B). All *in vitro* isolated variants stably expressed the platelet-interactive phenotype over more than 15 passages in culture. This persistence of the phenotype confirms that the MDA-MB 435 parental cell line contains cells that express  $\alpha v \beta 3$  in either of two activation states, a platelet-interactive or a noninteractive state. Unless under selective pressure, as during tumor growth or metastasis, the parental MDA-MB 435 cell population conserved the ratio of cells expressing the non-platelet-interactive versus the interactive form of  $\alpha v \beta 3$ . This conservation of this ratio was evident from repeated analytical blood perfusion experiments with parental MDA-MB 435 cells for more than 20 culture passages, during which the population at large maintained the non-platelet-interactive phenotype.

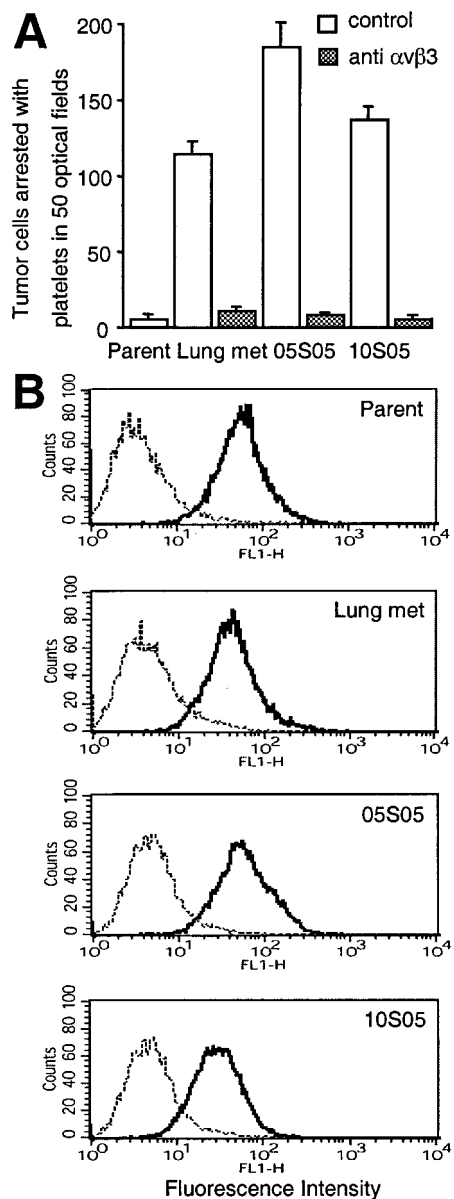
**Integrin  $\alpha v \beta 3$  Activation Results in the Platelet-Interactive, Arrest-Competent Phenotype in MDA-MB 435 Human Breast Cancer Cells.** We established a correlation between the platelet-interactive and the metastatic phenotype of MDA-MB 435 breast cancer cells. We now sought to determine whether there is a causal link between these two phenomena. To test the hypothesis that the activated, platelet-interactive state of tumor cell integrin  $\alpha v \beta 3$ , but not the nonactivated state, promotes hematogenous metastasis, MDA-MB 435 cells were transfected with a  $\beta 3$  mutant to express constitutively activated  $\alpha v \beta 3$ . To accomplish this transfection, a  $\beta 3$ -minus variant was selected from MDA-MB 435

**Table 1. Integrin  $\alpha v \beta 3$  expression in the human breast cancer cell model**

	MDA-MB 435 parent	MDA-MB 435 mfp tumor	MDA-MB 435 bone met	MDA-MB 435 lung met	MDA-MB 435 lymph node met	MDA-MB 435 pleural met	PE02JA
$\alpha v \beta 3$	36.87	40.16	47.23	40.24	47.24	41.35	55.53
$\alpha 2 \beta 1$	28.42	26.37	22.63	28.54	20.34	28.70	235.37

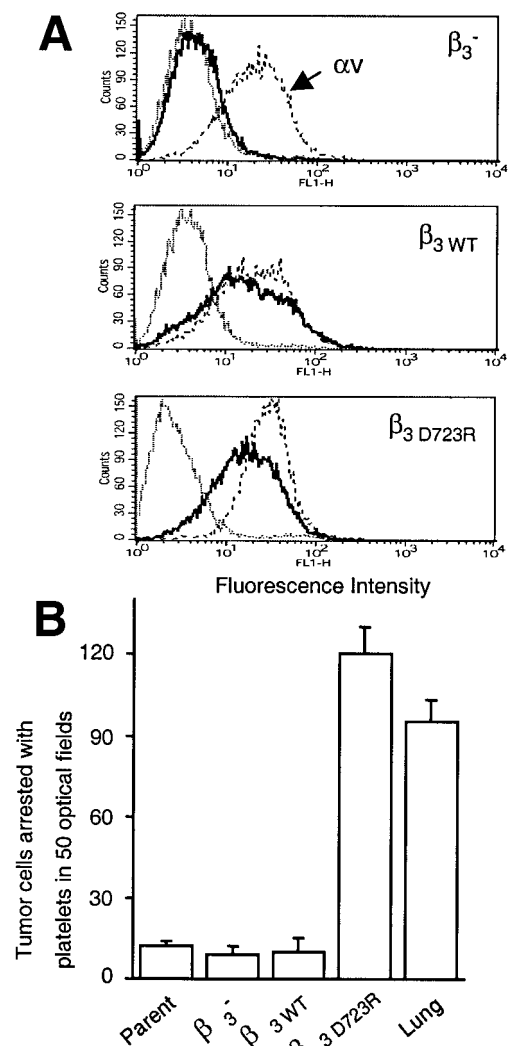
Variants of MDA-MB 435 cells were generated by injecting the parental cell line into the mammary fat pad (mfp) of severe combined immunodeficient mice and culturing their descendants from developing tumors or distant metastases to bone, lungs, lymph node, or the pleural cavity. PE02JA cells are primary metastatic breast cancer cells from a pleural effusion of a patient with advanced breast cancer. Integrin expression levels were determined by flow cytometry with anti- $\alpha v \beta 3$  mAb LM609 or anti- $\alpha 2 \beta 1$  mAb 12F1 and FITC-anti-mouse IgG. Values are median fluorescence intensities.





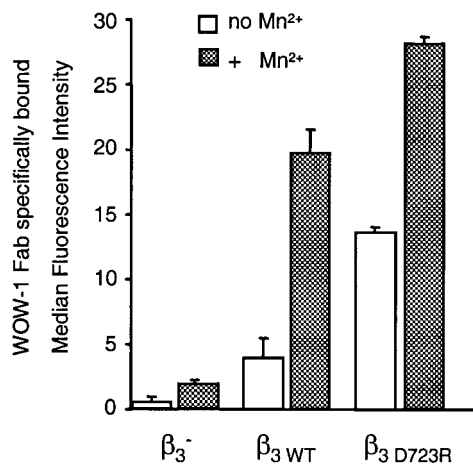
**Fig. 2.** MDA-MB 435 breast cancer cells contain an arrest-competent subset that expresses activated  $\alpha\text{v}\beta_3$ . Parental MDA-MB 435 breast cancer cells were suspended in human blood and perfused as in Fig. 1, but under sterile conditions. Arrested cells were expanded and resorted four times. (A) Two independently sorted polyclonal populations (05S05 and 10S05) analyzed for their ability to undergo platelet mediated arrest during blood flow (as in Fig. 1) in the absence (open bars) or presence (hatched bars) of function-blocking anti-integrin  $\alpha\text{v}\beta_3$  mAb VNR1 27.1. Columns represent means of triplicate runs ( $\pm$ SD) with blood from the same donor. (B) Parental MDA-MB 435 cells (Parent) and their *in vivo* (Lung met) or *in vitro* (05S05 and 10S05) selected variants express integrin  $\alpha\text{v}\beta_3$  at similar levels. Flow cytometric analysis was carried out on cells stained with mAb LM609 (anti- $\alpha\text{v}\beta_3$ ) (—) or isotype control (---) and FITC-anti-mouse IgG.

parental cells by exposing the cells to a saporin-anti- $\beta_3$  antibody conjugate that selectively killed  $\beta_3$ -expressing cells (23). After five rounds of selection, a  $\beta_3$ -minus population was obtained that maintained this phenotype over multiple culture passages (Fig. 3A). These cells were transfected stably with cDNA encoding full-length human  $\beta_3$  wild type,  $\beta_{3\text{WT}}$ , or mutant  $\beta_{3\text{D723R}}$ . Expression of the  $\beta_{3\text{D723R}}$  mutant results in constitutively activated platelet integrin  $\alpha\text{IIb}\beta_3$  (24). It dimerizes with the  $\alpha$



**Fig. 3.** Integrin  $\alpha\text{v}\beta_3$  activation renders breast cancer cells platelet-interactive and arrest-competent. A variant lacking  $\beta_3$  integrin expression ( $\beta_3^-$ ) was selected from parental MDA-MB 435 cells by exposure to an anti- $\beta_3$  saporin conjugate.  $\beta_3^-$  cells were stably transfected with the  $\beta_3$  wild-type gene ( $\beta_{3\text{WT}}$ ) or constitutively activated mutant  $\beta_{3\text{D723R}}$ . (A) Flow cytometric analysis of  $\alpha\text{v}\beta_3$  expression. Cells stained with anti- $\alpha\text{v}$  (mAb AV-8, ---) (10), anti- $\alpha\text{v}\beta_3$  (mAb LM609, —), or isotype control (----) and FITC-anti-mouse IgG. (B) Cells expressing constitutively activated  $\alpha\text{v}\beta_{3\text{D723R}}$ , but not  $\alpha\text{v}\beta_{3\text{WT}}$ , are platelet-interactive and arrest-competent. MDA-MB 435 parental cells (Parent), the  $\beta_3$ -lacking variant ( $\beta_3^-$ ), transfectants ( $\beta_{3\text{WT}}$ ,  $\beta_{3\text{D723R}}$ ), or the *in vivo* selected metastatic variant (Lung) were perfused in human blood, and cell arrest was analyzed as in Fig. 1. Columns represent means of triplicate runs ( $\pm$ SD) with blood from the same donor.

subunit, and this dimerization results in an altered functional state of integrin  $\alpha\text{v}\beta_3$  (27). Here, stable transfectants of MDA-MB 435  $\beta_3$ -minus cells were generated that expressed either  $\alpha\text{v}\beta_{3\text{WT}}$  or mutant  $\alpha\text{v}\beta_{3\text{D723R}}$  at levels comparable to that of  $\alpha\text{v}\beta_3$  in the parental cell line (Fig. 3A). The transfectants were analyzed *in vitro* for their ability to arrest during blood flow. Cells expressing mutant  $\alpha\text{v}\beta_{3\text{D723R}}$ , but not those expressing  $\alpha\text{v}\beta_{3\text{WT}}$  or expressing no  $\beta_3$ , were able to arrest in a platelet-dependent manner similar to that of the *in vivo* selected metastatic MDA-MB 435 cell variants (Fig. 3B).  $\alpha\text{v}\beta_3$  is the only  $\beta_3$  integrin of MDA-MB 435 cells. Therefore, the expression of mutant  $\beta_{3\text{D723R}}$  resulted in functionally activated  $\alpha\text{v}\beta_3$  that supported tumor cell arrest during blood flow through interaction with platelets.



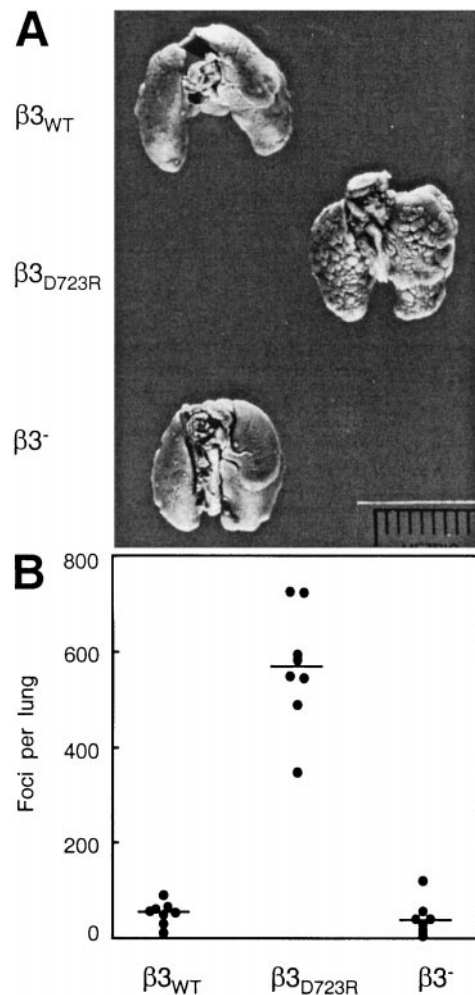
**Fig. 4.** Binding of the ligand-mimetic antibody Fab WOW-1 to functional variants of MDA-MB 435 breast cancer cells. Flow cytometric analysis of WOW-1 binding (activation-dependent anti- $\alpha v\beta_3$  Fab) to variants of MDA-MB 435 breast cancer cells lacking  $\beta_3$  ( $\beta_3^-$ ) or transfected with the  $\beta_3$  wild-type gene ( $\beta_3_{WT}$ ) or constitutively activated mutant  $\beta_3_{D723R}$ . Cells were incubated with 10  $\mu\text{g/ml}$  WOW-1 in the absence (open bars) or presence (hatched bars) of 250  $\mu\text{M}$   $\text{MnCl}_2$ , added to activate  $\alpha v\beta_3$ , and stained with Alexa Fluor 488-anti mouse IgG. Shown is specific WOW-1 binding defined as that inhibited by 2 mM RGDS peptide (means of duplicate analyses  $\pm$  SD).

**Integrin  $\alpha v\beta_3$  Activation Promotes Binding of a Ligand-Mimetic Antibody and Enhances Breast Cancer Cell Migration Toward Vitronectin.** The ability of integrin  $\alpha v\beta_3$  to support breast cancer cell arrest during blood flow in one functional state, but not the other, indicates strongly that  $\alpha v\beta_3$  exists in an activated and a nonactivated or less activated state in these tumor cells. To test whether the arrest-competent state of breast cancer cell integrin  $\alpha v\beta_3$  supports other cell functions differently than the non-arrest-competent state, we analyzed binding of the ligand-mimetic antibody WOW-1. WOW-1 is a genetically engineered Fab fragment that contains a RGD sequence in the context of the adenovirus penton base protein and serves as a monovalent ligand for  $\alpha v$  integrins (17). Importantly, WOW-1 was generated on the framework of the PAC-1 Fab, which recognizes platelet integrin  $\alpha IIb\beta_3$  in an activation-dependent manner (28). Therefore, WOW-1 specifically reports an activated state of integrin  $\alpha v\beta_3$  (17). Here we show that MDA-MB 435 breast cancer cells expressing arrest-competent  $\alpha v\beta_3_{D723R}$  bound twice as much WOW-1 as the variant expressing non-arrest-competent  $\alpha v\beta_3_{WT}$

**Table 2. Haptotactic migration of functional variants of MDA-MB 435 breast cancer cells**

	Lung	Parent	$\beta_3_{D723R}$	$\beta_3_{WT}$	$\beta_3^-$
VN	473 $\pm$ 32	225 $\pm$ 18	1125 $\pm$ 85	478 $\pm$ 42	198 $\pm$ 15
FN	372 $\pm$ 42	441 $\pm$ 42	1085 $\pm$ 95	1205 $\pm$ 110	275 $\pm$ 22
Fg	33 $\pm$ 12	15 $\pm$ 11	70 $\pm$ 12	18 $\pm$ 6	6 $\pm$ 4

Migration toward vitronectin (VN), fibronectin (FN), or fibrinogen (Fg) was analyzed for MDA-MB 435 parental cells (parent), an *in vivo* selected metastatic variant (Lung), or the  $\beta_3$ -integrin lacking variant ( $\beta_3^-$ ) and its transfectants expressing either  $\beta_3$  wild-type ( $\beta_3_{WT}$ ) or constitutively activated  $\beta_3_{D723R}$ . Cells were starved overnight in 0.5% FBS, and migration was assayed in transwell chambers ( $6 \times 10^4$  per well in duplicate, 14 h). Migrated cells were counted at the filter underside in 10 random optical fields per filter by two observers. Columns represent mean numbers of migrated cells per field ( $\pm$  SD). Data comparing the metastatic cell variant (Lung) to the parental cells and data comparing  $\beta_3$ -lacking cells to its  $\beta_3$  transfectants are from independent experiments. Absolute numbers of migrated cells varied between experiments, but the ratios of migratory activities between the cell types remained constant.



**Fig. 5.** Integrin  $\alpha v\beta_3$  activation controls metastatic potential in the MDA-MB 435 breast carcinoma cell model. (A) Lungs of female C.B17/lcrTac *scid* mice 42 days after i.v. injection of  $1 \times 10^6$  tumor cells. The  $\beta_3$  integrin lacking cell variant and its transfectants expressing either  $\alpha v\beta_3_{WT}$  or  $\alpha v\beta_3_{D723R}$  were compared. The  $\beta_3_{D723R}$ -expressing variant had the platelet-interactive phenotype and showed increased metastatic activity. (B) Number of metastatic foci at the lung surface. Data points are numbers of lung surface metastases for each animal; horizontal lines are median numbers of metastases per group ( $n = 8$ ). Cells expressing activated  $\alpha v\beta_3_{D723R}$  produced a significantly larger number of metastases than cells lacking  $\beta_3$  or expressing nonactivated  $\alpha v\beta_3_{WT}$  ( $P < 0.0001$  by the Kruskal-Wallis test).

(Fig. 4). The two cell variants expressed  $\alpha v\beta_3$  at equivalent levels (Fig. 3). In the presence of  $\text{Mn}^{2+}$ , WOW-1 binding increased 2-fold in  $\alpha v\beta_3_{D723R}$ -expressing cells but 5-fold in  $\alpha v\beta_3_{WT}$ -expressing cells. This difference in the increase in WOW-1 binding indicates that  $\alpha v\beta_3_{D723R}$  already exists in a state of increased activation in the absence of exogenous agonist. Similar results were obtained by comparing MDA-MB 435 parental cells and the *in vivo* selected metastatic variant from the lung (not shown).

Integrin  $\alpha v\beta_3$ -mediated cell migration on certain ligands is affected by the functional state of the receptor (29). To confirm the activated state of  $\alpha v\beta_3$  in the arrest-competent variants of our MDA-MB 435 breast cancer cell model, we analyzed cell migration toward matrix proteins. We tested vitronectin, fibronectin, and fibrinogen, which are ligands of  $\alpha v\beta_3$  and support cell adhesion through this receptor (16, 30). Integrin  $\alpha v\beta_3$  activation enhanced breast cancer cell migration toward vitronectin. Metastatic MDA-MB 435 cells from the lung and  $\beta_3_{D723R}$

transfectants (activated  $\alpha v\beta 3$ ) migrated more actively toward vitronectin than the parental cells or  $\beta 3_{WT}$  transfectants (non-activated  $\alpha v\beta 3$ ) (Table 2). Migration toward fibronectin was also mediated by  $\alpha v\beta 3$ , but was not affected by the receptor activation state. Low levels of vitronectin- and fibronectin-directed migration seen in the  $\beta 3$ -minus variant were likely supported by integrin  $\alpha v\beta 5$  and  $\alpha 5\beta 1$ , respectively (both receptors were expressed by all MDA-MB 435 cell variants). The tested cell variants migrated poorly toward fibrinogen.

Together, the activated state of integrin  $\alpha v\beta 3$  in breast cancer cells, defined here by the platelet-interactive, arrest-competent phenotype, was confirmed by increased binding of a ligand-mimetic antibody and increased support of cell migration toward vitronectin.

**Integrin  $\alpha v\beta 3$  Activation Controls the Metastatic Potential in MDA-MB 435 Breast Cancer Cells.** To test whether activation of tumor cell integrin  $\alpha v\beta 3$  affects the metastatic activity of breast cancer cells, MDA-MB 435 transfectants expressing either nonactivated  $\alpha v\beta 3_{WT}$  or constitutively activated mutant  $\alpha v\beta 3_{D723R}$  were injected into the circulation of severe combined immunodeficient mice. The ability of the cells to colonize the lungs was compared with that of the  $\beta 3$ -lacking cell variant. Metastatic activity was significantly enhanced ( $P < 0.0001$ ) in cells expressing mutant  $\alpha v\beta 3_{D723R}$  compared with cells expressing  $\alpha v\beta 3_{WT}$  or no  $\beta 3$  (Fig. 5). There was no difference between the latter two groups. Thus, in the MDA-MB 435 breast cancer cell model, expression of activated  $\alpha v\beta 3$  resulted in a platelet-interactive phenotype and strongly increased metastatic activity.

It is currently unknown whether an interaction between breast cancer cells and platelets within the host circulation critically affects metastatic activity. The interaction of the tumor cells with platelets during blood flow *in vitro* allowed us to identify a functionally activated state of tumor cell integrin  $\alpha v\beta 3$  that may promote metastasis through a combination of altered adhesive, migratory, and other cell functions. The platelet-interactive variants of the MDA-MB 435 cell model, identified by perfusion in human blood, also interacted with murine platelets when perfused in mouse blood (not shown). It is therefore possible

that this mechanism promoted metastatic activity of the human breast cancer cells in the mouse model.

We showed that  $\alpha v\beta 3$  can exist in breast cancer cells in distinct functional states. The activated but not the nonactivated state supported tumor cell arrest during blood flow through interaction with platelets. We established a correlation between the expression of activated  $\alpha v\beta 3$  and the metastatic phenotype in the MDA-MB 435 human breast cancer cell model and in primary metastatic cells from a breast cancer patient. Importantly, we documented a causal relationship between the expression of activated  $\alpha v\beta 3$  and the metastatic potential in MDA-MB 435 breast cancer cells, because expression of constitutively activated mutant  $\alpha v\beta 3_{D723R}$ , but not  $\alpha v\beta 3_{WT}$ , resulted in a significant increase in metastatic activity. These results demonstrate that human breast cancer cells can exhibit a platelet-interactive and metastatic phenotype that is controlled by the activation state of tumor cell integrin  $\alpha v\beta 3$ . This conclusion is consistent with a “two hit hypothesis” (31) in which  $\alpha v\beta 3$  expression is necessary but not sufficient for successful breast cancer metastasis. Rather, additional as yet undefined factor(s) that control(s) the activation state of the integrin are required for metastatic dissemination. Consequently, alterations within tumors that lead to the aberrant control of integrin activation are expected to adversely affect the course of human breast cancer.

This paper is dedicated to the memory of Faye E. Miller. We thank Dr. M. P. Kosty and T. C. Bryntesen (Scripps Clinic, La Jolla, CA) for specimens from cancer patients, Dr. J. E. Price (M. D. Anderson Cancer Center, Houston) for the MDA-MB 435 cell line, and Drs. D. A. Cheresch and J. A. Koziol (Scripps Research Institute, La Jolla, CA) for mAb LM609 and help with statistical analyses, respectively, Dorothy Markowitz for technical assistance, and Pamela Fagan and Rachel Braithwaite for secretarial help. This work was supported by grants from the National Institutes of Health (CA67988 to B.F.-H.; CA69306, HL58925 to J.W.S.; CA59692 to B.M.M.), the University of California Breast Cancer Research Program (5JB-0143 to B.F.-H.; 5JB-0033 to J.W.S.), and the U.S. Army (BC980694 to B.F.-H.). Care for the mice, surgery, and injection protocols were carried out according to institutional and National Institutes of Health guidelines. This paper is manuscript 13054-MEM of the Scripps Research Institute.

- Price, J. T., Bonovich, M. T. & Kohn, E. C. (1997) *Crit. Rev. Biochem. Mol. Biol.* **32**, 175–253.
- Ruoslanti, E. (1999) *Adv. Cancer Res.* **76**, 1–20.
- Schwartz, M. A., Schaller, M. D. & Ginsberg, M. H. (1995) *Annu. Rev. Cell Dev. Biol.* **11**, 549–599.
- Brooks, P. C., Clark, R. A. & Cheresch, D. A. (1994) *Science* **264**, 569–571.
- Albelda, S. M., Mette, S. A., Elder, D. E., Stewart, R., Damjanovich, L., Herlyn, M. & Buck, C. A. (1990) *Cancer Res.* **50**, 6757–6764.
- Natali, P. G., Hamby, C. V., Felding-Habermann, B., Liang, B., Nicotra, M. R., Di Filippo, F., Giannarelli, D., Temponi, M. & Ferrone, S. (1997) *Cancer Res.* **57**, 1554–1560.
- Gingras, M. C., Roussel, E., Bruner, J. M., Branch, C. D. & Moser, R. P. (1995) *J. Neuroimmunol.* **57**, 143–153.
- Pignatelli, M., Cardillo, M. R., Hanby, A. & Stamp, G. W. (1992) *Hum. Pathol.* **23**, 1159–1166.
- Liapis, H., Flath, A. & Kitazawa, S. (1996) *Diagn. Mol. Pathol.* **5**, 127–135.
- Felding-Habermann, B., Habermann, R., Saldivar, E. & Ruggeri, Z. M. (1996) *J. Biol. Chem.* **271**, 5892–5900.
- Konstantopoulos, K. & McIntire, L. V. (1997) *J. Clin. Invest.* **100**, S19–S23.
- Diamond, M. S. & Springer, T. A. (1994) *Curr. Biol.* **4**, 506–517.
- Altieri, D. C. (1999) *Thromb. Haemostasis* **82**, 781–786.
- Savage, B., Almus-Jacobs, F. & Ruggeri, Z. M. (1998) *Cell* **94**, 657–666.
- Yatohgo, T., Izumi, M., Kashiwagi, H. & Hayashi, M. (1988) *Cell Struct. Funct.* **13**, 281–292.
- Felding-Habermann, B., Ruggeri, Z. M. & Cheresch, D. A. (1992) *J. Biol. Chem.* **267**, 5070–5077.
- Pampori, N., Hato, T., Stupack, D. G., Aidoudi, S., Cheresch, D. A., Nemerow, G. R. & Shattil, S. J. (1999) *J. Biol. Chem.* **274**, 21609–21616.
- Lam, S. C., Plow, E. F., D’Souza, S. E., Cheresch, D. A., Frelinger, A. L., III & Ginsberg, M. H. (1989) *J. Biol. Chem.* **264**, 3742–3749.
- Cheresch, D. A. & Spiro, R. C. (1987) *J. Biol. Chem.* **262**, 17703–17711.
- Stuiver, I. & Smith, J. W. (1995) *Hybridoma* **14**, 545–550.
- Pischel, K. D., Bluestein, H. G. & Woods, V. L. (1988) *J. Clin. Invest.* **81**, 505–513.
- Price, J. E., Polyzos, A., Zhang, R. D. & Daniels, L. M. (1990) *Cancer Res.* **50**, 717–721.
- Dinota, A., Tazzari, P. L., Michieli, M., Visani, G., Gobbi, M., Bontadini, A., Tassi, C., Fanin, R., Damiani, D. & Grandi, M. (1990) *Cancer Res.* **50**, 4291–4294.
- Hughes, P. E., Diaz-Gonzalez, F., Leong, L., Wu, C., McDonald, J. A., Shattil, S. J. & Ginsberg, M. H. (1996) *J. Biol. Chem.* **271**, 6571–6574.
- Niyya, K., Hodson, E., Bader, R., Byers-Ward, V., Koziol, J. A., Plow, E. F. & Ruggeri, Z. M. (1987) *Blood* **70**, 475–483.
- Cornetta, K., Moore, A., Johannesson, M. & Sledge, G. W. (1994) *Clin. Exp. Metastasis* **12**, 3–12.
- Wu, C., Hughes, P. E., Ginsberg, M. H. & McDonald, J. A. (1996) *Cell Adhes. Commun.* **4**, 149–158.
- Shattil, S. J., Cunningham, M. & Hoxie, J. A. (1987) *Blood* **70**, 307–315.
- Zheng, D. Q., Woodard, A. S., Tallini, G. & Languino, L. R. (2000) *J. Biol. Chem.* **275**, 24565–24574.
- Felding-Habermann, B., Mueller, B. M., Romerdahl, C. A. & Cheresch, D. A. (1992) *J. Clin. Invest.* **89**, 2018–2022.
- Yeung, R. S., Xiao, G. H., Jin, F., Lee, W. C., Testa, J. R. & Knudson, A. G. (1994) *Proc. Natl. Acad. Sci. USA* **91**, 11413–11416.